



Comfort. Under control.

12-26 CULVERS - GREEN BAY, WI (FACILITY TAB)

CheckList Information

Name : TECH - SITE PICTURES **Status :** NotSubmitted
Assigned Organization : National TAB **Asset :**
Requesting Organization : National TAB

CheckList Item Details

STORE FRONT



CulversGreenBay.jpeg

RTU-1



RTU-1.jpeg

RTU-2



RTU-2.jpeg

PRV-1



PRV-1.jpeg



PRV-1motor.jpeg

PRV-2

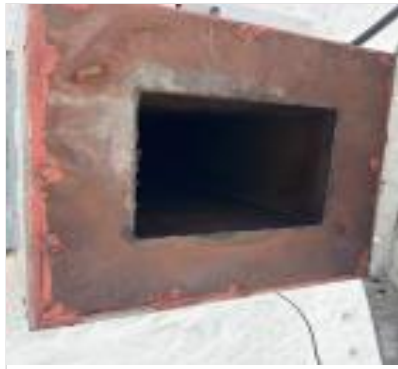


PRV-2.jpeg

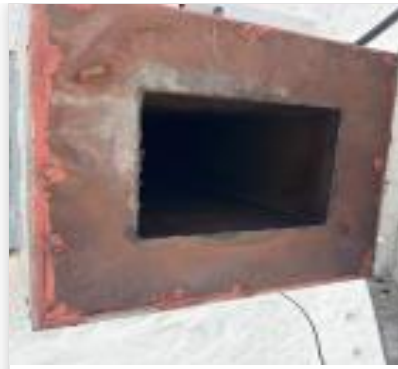


PRV-2.jpeg

PRV-3



PRV-3.jpeg



PRV-3.jpeg

PRV-4



PRV-4.jpeg



PRV-4.jpeg

EF-1A



EF-1A.jpeg

HOOD 1



HD-1.jpeg

HOOD 2



HD-2.jpeg

HOOD 3



HD-3.jpeg

PRODIGY BOARD WIRING

Notes/Comments :



Comfort. Under control.

12-26 CULVERS - GREEN BAY, WI (FACILITY TAB)

CheckList Information

Name : TECH - STEP 1: INITIAL WALKTHROUGH **Status :** NotSubmitted

Assigned Organization : National TAB **Asset :**

Requesting Organization : National TAB

CheckList Item Details

INITIAL SITE WALKTHROUGH

All diffusers and grilles are installed and match design?	Yes
Perforated diffusers are installed on the cook line? (4-ways will disrupt hood capture)	Yes
All hood filters installed and accounted for?	Yes
Hoods are wired and have power?	Yes
Thermostats have power?	Yes
Have trades/general contractor been notified about any issues and are they created on FaciliBuild?	Yes
On the cookline diffusers neck is there 18" (12" minimum) straight rigid duct run attached?	No

Notes/Comments :



Comfort. Under control.

12-26 CULVERS - GREEN BAY, WI (FACILITY TAB)

CheckList Information

Name :	TECH - STEP 2: UNIT DATA AND EVAL	Status :	NotSubmitted
Assigned Organization :	National TAB	Asset :	
Requesting Organization :	National TAB		

CheckList Item Details

UNIT DATA AND EVALUATION WHILE GATHERING UNIT DATA CHECK THE FOLLOWING:

RTU's/AHU's

Economizers are assembled and functional?	Yes
Thermostat wire run from OCP on the RTU to the Ec terminal at the thermostat? If no, jumper can be installed from R to OCP temporarily. (The economizers will not open without OCP being energized.)	N/A, Captiveaire DOAS units installed.
Motors are all operating below the FLA rating?	Yes
Are belts tight?	N/A, direct drive units.
If direct drive unit is the speed controller working.	Yes
Is gas piping installed and valves turned on?	Yes
Unit free of noticeable noise and vibration	Yes

EF's

Rotation is correct?	Yes
Belts are tight?	Yes
Grease cup installed on hood fan?	Yes
Hinge kit installed installed on hood fan?	Yes
Lean grease rated fans back. Is grease duct installation adequate and is duct ran all the way to the base of the fan?	Yes

Flex conduit is long enough so that fan can be completely tilted back?	Yes
There is no major leakage around base of fan?	Yes
Is the motor operating below the motor FLA rating?	Yes
For restroom fan(s) is the back draft damper installed and can it fully open?	Yes
Unit free of noticeable noise and vibration?	Yes
The hood exhaust fans are installed in correct positions and are not switched?	Yes

HOODS

Kitchen equipment installed in proper places?	Yes
Can kitchen equipment be turned on for final smoke test?	Yes
Second stage Grease Grabber filters are installed on the griddle hood?	Grease grabber filters installed on both fryer and griddle hoods.

DOCUMENTATION

Have trades/general contractor been notified about any issues and are they created on FaciliBuild?	Yes
--	-----

Notes/Comments :



Comfort. Under control.

12-26 CULVERS - GREEN BAY, WI (FACILITY TAB)

CheckList Information

Name : TECH - STEP 3: TEST, ADJUST AND BALANCE **Status :** NotSubmitted

Assigned Organization : National TAB **Asset :**

Requesting Organization : National TAB

CheckList Item Details

TEST, ADJUST, AND BALANCE ALL EQUIPMENT:

DURING TESTING MAKE NOTE OF THE FOLLOWING:

Is space free of drafting?	Yes
Is space comfortable in all areas?	Yes
Is the space free of ventilation noise?	Yes
If deviations from design were necessary to resolve 1-3 what were they? Otherwise put "NA".	Yes

Notes/Comments :



Comfort. Under control.

12-26 CULVERS - GREEN BAY, WI (FACILITY TAB)

CheckList Information

Name :	TECH - STEP 4: FINAL TESTS	Status :	NotSubmitted
Assigned Organization :	National TAB	Asset :	
Requesting Organization :	National TAB		

CheckList Item Details

FINAL TESTS

HOOD CAPTURE TEST

List equipment turned on for testing	Griddle, Fryer
List smoke candle type used	45 second smoke emitter
Smoke test capture - Perimeter of hood	100%
Smoke test capture - Top of cooking surface	100%

WITNESS

Date test was completed	12/28/2022
TAB tech name / Firm	Michael McDonnell / National TAB
Site super name / Firm	N/A
Owner representative name / Firm (if Applicable)	N/A
Building pressure at front & back doors (All Systems On)	0.010"

ADDITIONAL

Do actual net building airflow, design net building airflow, and pressure coincide? If not why? (All three should either be positive or negative)	Yes
Thermostats are programmed?	Yes, occupancy based on hood operation.

PRODIGY SETTINGS FOR RTU'S

Parameter 65 set to 0	
-----------------------	--

Parameter 78 set to 0

Parameter 105 set to 6

Parameter 156 set to 70 (Dining unit only)

Parameter 156 set to 65 (Kitchen Unit Only)

Parameter 170 set to 75 (Dining Unit Only)

Parameter 170 set to 70 (Kitchen Unit Only)

Parameter 131 set to the same % as OA minimum position?

Parameter 117 set to the same % as OA minimum position?

Notes/Comments :

National TAB

Project: 12-26 CULVERS - GREEN BAY, WI (FACILITY TAB)

System/Unit: AHU/RTU



Comfort. Under control.

Asset: RTU1

AREA:DINING

Unit Data		
	Design	Actual
MFG	CAPTIVEAIRE	CAPTIVEAIRE
Serial Num	-	5607542
Model Num	CASTRU3-1.400-24-15T-DOAS	CASTRU3-1.400-24-15T-DOAS
Type	DOAS	DOAS
Configuration	VERTICAL	VERTICAL
Num OA Filters 1	-	
OA Filter Size 1	-	
Num Final Filter 1	-	
Final Filter Size 1	-	
Num Final Filter 2	-	
Final Filter Size 2	-	

Motor Data		
	Design	Actual
Motor MFG	-	TECO WESTINGHOUSE
Frame	-	213T
Horsepower	7.50	7.5
Motor Rpm	-	1755
Phase	3	3
Rated Voltage	208	230
Rated Amperage	-	19.1

Drive Data		
	Design	Actual
Motor Sheave Size	-	DD
Motor Bore Size	-	DD
Motor Sheave SetPt	-	
Fan Sheave Size	-	DD
Fan Sheave Bore	-	DD
Belt CL Distance	-	DD
Num of Belts	-	DD
Belt Size	-	DD
Belt Alignment	-	DD

Test Data		
	Design	Actual
SF CFM	5500	
SF RPM	-	
RA CFM	3795	
OA CFM	1705	
RL Voltage	-	
RL Amperage	-	
SF Rotation	-	
RA Damper Position	-	
Min OA Damper Position	-	
Min OA Damper Type	-	
OA Enthalpy Setpt	-	

Performance Data		
	Design	Actual
MA Plenum SP	-	
Fan Suction SP	-	
Fan Discharge SP	-	
Total ESP	0.750"	
Fan Total SP	-	

General		
	Design	Actual
Fan Rotation Correct	-	
Unit Filters Clean	-	
Condensate Drain Installed	-	

Completed By: Brianna Biggs

Notes:

National TAB

Project: 12-26 CULVERS - GREEN BAY, WI (FACILITY TAB)

AHU/RTU



Comfort. Under control.

Diffuser Supply (GRD)

RTU1/DINING

Asset									
Asset Name	Location	Type	Size	DESIGN CFM	AK	CFM(1)	CFM(2)	FINAL CFM	% to design
SGRD1									
SGRD2									
SGRD3									
SGRD4									
SGRD5									
SGRD6									
SGRD7									
SGRD8									
SGRD9									
SGRD10									
SGRD11									
SGRD12									
SGRD13									
SGRD14									
SGRD15									
SGRD16									
SGRD17									
SGRD18									
SGRD19									
SGRD20									
SGRD21									
SGRD22									
SGRD23									
SGRD24									
SGRD25									
SGRD26									

Completed By: Brianna Biggs on

National TAB

Project: 12-26 CULVERS - GREEN BAY, WI (FACILITY TAB)

System/Unit: AHU/RTU



Comfort. Under control.

Asset: RTU2

AREA: KITCHEN

Unit Data		
	Design	Actual
MFG	CAPTIVEAIRE	CAPTIVEAIRE
Serial Num	-	5607542
Model Num	CASTRU3-I.400-24-15T-DOAS	CASTRU3-I.400-24-15T-DOAS
Type	DOAS	DOAS
Configuration	VERTICAL	VERTICAL
Num OA Filters 1	-	
OA Filter Size 1	-	
Num Final Filter 1	-	
Final Filter Size 1	-	
Num Final Filter 2	-	
Final Filter Size 2	-	

Motor Data		
	Design	Actual
Motor MFG	-	TECO WESTINGHOUSE
Frame	-	213T
Horsepower	7.50	7.50
Motor Rpm	-	1755
Phase	3	3
Rated Voltage	208	230
Rated Amperage	-	19.1

Drive Data		
	Design	Actual
Motor Sheave Size	-	DD
Motor Bore Size	-	DD
Motor Sheave SetPt	-	
Fan Sheave Size	-	DD
Fan Sheave Bore	-	DD
Belt CL Distance	-	DD
Num of Belts	-	DD
Belt Size	-	DD
Belt Alignment	-	DD

Completed By: Brianna Biggs

Notes:

Test Data		
	Design	Actual
SF CFM	5500	
SF RPM	-	
RA CFM	3795	
OA CFM	1705	
RL Voltage	-	
RL Amperage	-	
SF Rotation	-	
RA Damper Position	-	
Min OA Damper Position	-	
Min OA Damper Type	-	
OA Enthalpy Setpt	-	

Performance Data		
	Design	Actual
MA Plenum SP	-	
Fan Suction SP	-	
Fan Discharge SP	-	
Total ESP	0.750"	
Fan Total SP	-	

General		
	Design	Actual
Fan Rotation Correct	-	
Unit Filters Clean	-	
Condensate Drain Installed	-	

National TAB

Project: 12-26 CULVERS - GREEN BAY, WI (FACILITY TAB)

AHU/RTU



Comfort. Under control.

Diffuser Supply (GRD)

RTU2/KITCHEN

Asset									
Asset Name	Location	Type	Size	DESIGN CFM	AK	CFM(1)	CFM(2)	FINAL CFM	% to design
SGRD1									
SGRD2									
SGRD3									
SGRD4									
SGRD5									
SGRD6									
SGRD7									
SGRD8									
SGRD9									
SGRD10									
SGRD11									
SGRD12									
SGRD13									
SGRD14									
SGRD15									

Completed By: Brianna Biggs on

National TAB

Project: 12-26 CULVERS - GREEN BAY, WI (FACILITY TAB)

System/Unit: FAN - Exhaust



Comfort. Under control.

Asset: PRV1

AREA:RESTROOMS

Unit Data		
	Design	Actual
MFG	NA	GREENHECK
Model Num	NA	S-085SDSX
Serial Num	-	108790060706
Type	-	DOWNBLAST
Configuration	-	VERTICAL

Motor Data		
	Design	Actual
Motor MFG	-	MCMILLAN
Frame	-	NL
Horsepower	-	1/20
Motor Rpm	-	1550/1300/1050
Phase	-	1
Voltage (rated)	-	115
Amperage (rated)	-	1.2

Test Data		
	Design	Actual
CFM	-	0
Fan RPM	-	0
Fan Rotation	-	CW
Motor RPM	-	0
System SetPt	-	[1]
RL Voltage	-	[1]
RL Amperage	-	[1]
Total ESP	-	[1]
Fan Inlet SP	-	[1]
Fan Discharge SP	-	[1]

Completed By: Michael McDonnell

Notes:

National TAB

Project: 12-26 CULVERS - GREEN BAY, WI (FACILITY TAB)

System/Unit: FAN - Exhaust



Comfort. Under control.

Asset: PRV2

AREA:HOOD 1

Unit Data		
	Design	Actual
MFG	NA	GREENHECK
Model Num	NA	CUBE-161XP-15-G
Serial Num	-	103790050706
Type	-	UPBLAST
Configuration	-	VERTICAL

Motor Data		
	Design	Actual
Motor MFG	-	MARATHON
Frame	-	56H
Horsepower	-	1.5
Motor Rpm	-	1725
Phase	-	3
Voltage (rated)	-	208-230
Amperage (rated)	-	4.8-4.4
Service Factor	-	1.15

Drive Data		
	Design	Actual
Motor Sheave Size	-	4"
Motor Bore Size	-	5/8"
Motor Sheave SetPt	-	2 TURNS OPEN
Fan Sheave Size	-	3"
Fan Sheave Bore	-	1"
Belt CL Distance	-	6"
Num of Belts	-	1
Belt Size	-	A22

Test Data		
	Design	Actual
CFM	-	1597
Fan RPM	-	2008
Fan Rotation	-	CW
Motor RPM	-	1775
RL Voltage	-	211/211/211
RL Amperage	-	3.1/3.1/3.0
Suction ESP	-	-1.07"
Discharge ESP	-	ATM
Total ESP	-	1.07"

Completed By: Michael McDonnell

Notes:

National TAB

Project: 12-26 CULVERS - GREEN BAY, WI (FACILITY TAB)

System/Unit: FAN - Exhaust



Comfort. Under control.

Asset: PRV3

AREA:HOOD 3

Unit Data		
	Design	Actual
MFG	NA	GREENHECK
Model Num	NA	CUBE-161XP-10-G
Serial Num	-	108790030706
Type	-	UPBLAST
Configuration	-	VERTICAL

Motor Data		
	Design	Actual
Motor MFG	-	MARATHON
Frame	-	56
Horsepower	-	1.0
Motor Rpm	-	1725
Phase	-	3
Voltage (rated)	-	208-230
Amperage (rated)	-	3.40-3.20
Service Factor	-	1.15

Drive Data		
	Design	Actual
Motor Sheave Size	-	VP44
Motor Bore Size	-	5/8"
Motor Sheave SetPt	-	1 TURN OPEN
Fan Sheave Size	-	AK32
Fan Sheave Bore	-	1"
Belt CL Distance	-	6.5"
Num of Belts	-	1
Belt Size	-	A-22

Test Data		
	Design	Actual
CFM	-	1614
Fan RPM	-	2098
Fan Rotation	-	CW
Motor RPM	-	1720
RL Voltage	-	211/211/211
RL Amperage	-	2.4/2.7/2.4
Suction ESP	-	-0.83"
Discharge ESP	-	ATM
Total ESP	-	0.83"

Completed By: Michael McDonnell

Notes:

National TAB

Project: 12-26 CULVERS - GREEN BAY, WI (FACILITY TAB)

System/Unit: FAN - Exhaust



Comfort. Under control.

Asset: PRV4

AREA:HOOD

Unit Data		
	Design	Actual
MFG	NA	NA
Model Num	NA	NA
Serial Num	-	
Type	-	
Configuration	-	

Motor Data		
	Design	Actual
Motor MFG	-	
Frame	-	
Horsepower	-	
Motor Rpm	-	
Phase	-	
Voltage (rated)	-	
Amperage (rated)	-	
Service Factor	-	

Drive Data		
	Design	Actual
Motor Sheave Size	-	
Motor Bore Size	-	
Motor Sheave SetPt	-	
Fan Sheave Size	-	
Fan Sheave Bore	-	
Belt CL Distance	-	
Num of Belts	-	
Belt Size	-	

Test Data		
	Design	Actual
CFM	-	
Fan RPM	-	
Fan Rotation	-	
Motor RPM	-	
RL Voltage	-	
RL Amperage	-	
Suction ESP	-	
Discharge ESP	-	
Total ESP	-	

Completed By: Wale Odofin

Notes:

National TAB

Project: 12-26 CULVERS - GREEN BAY, WI (FACILITY TAB)

System/Unit: Kitchen Hood Type I



Comfort. Under control.

Asset: HD1

AREA:

Unit Data		
	Design	Actual
MFG	NA	GREENHECK
Model Num	NA	[1]
Job / Serial Num	-	[1]
Type	-	TYPE I
Hood length	-	64"
Hood Width	-	26"

Test Data Exhaust		
	Design	Actual
Filter Type	-	GREASE GRABBER
Filter Size 1	-	16X16
Filter Qty 1	-	4
Filter AK factor size 1	-	1.53
Filter Total AK Area	-	6.12
Filter1 FPM	-	274
Filter2 FPM	-	258
Filter3 FPM	-	240
Filter4 FPM	-	270
Filter Ave FPM(corr)	-	261
CFM	-	1597

Cooking Equipment		
	Design	Actual
Item 1	-	GRIDDLE

Completed By: Michael McDonnell

Notes:

National TAB

Project: 12-26 CULVERS - GREEN BAY, WI (FACILITY TAB)

System/Unit: Kitchen Hood Type I



Comfort. Under control.

Asset: HD2

AREA:

Unit Data		
	Design	Actual
MFG	NA	GREENHECK
Model Num	NA	[1]
Job / Serial Num	-	[1]
Type	-	TYPE I
Hood length	-	83"
Hood Width	-	26"

Test Data Exhaust		
	Design	Actual
Filter Type	-	GREASE GRABBER
Filter Size 1	-	16X16
Filter Qty 1	-	5
Filter AK factor size 1	-	1.53
Filter Total AK Area	-	7.65
Filter1 FPM	-	209
Filter2 FPM	-	208
Filter3 FPM	-	218
Filter4 FPM	-	215
Filter5 FPM	-	205
Filter Ave FPM(corr)	-	211
CFM	-	1614

Cooking Equipment		
	Design	Actual
Item 1	-	FRYER

Completed By: Michael McDonnell

Notes:

National TAB

Project: 12-26 CULVERS - GREEN BAY, WI (FACILITY TAB)

System/Unit: Kitchen Hood Type I



Comfort. Under control.

Asset: HD3

AREA:

Unit Data

	Design	Actual
MFG	NA	GREENHECK
Model Num	NA	GD3-3.50-S 1180
Job / Serial Num	-	10903245
Type	-	TYPE II
Hood length	-	42"
Hood Width	-	42"

Test Data Exhaust

	Design	Actual
Filter Ave FPM(corr)	-	0
CFM	-	0

Cooking Equipment

	Design	Actual
--	--------	--------

Completed By: Wale Odofin

Notes: [1] HOOD EXHAUST FAN NOT OPERATIONAL. FAN NEEDS SERVICE.