

FOR QUESTIONS, CALL THE  
 Florida National Accounts  
 REGION 60  
 PHONE: (407) 682-3100  
 EMAIL: reg60@captiveaire.com

**DOAS/RTU FAN SCHEDULE - JOB#5607542**

FAN UNIT NO	TAG	QTY	DOAS/RTU MODEL #	MANUFACTURER	FAN INFORMATION										ELECTRICAL INFORMATION								COOLING INFORMATION						REHEAT INFORMATION				GAS HEAT INFORMATION				NOTES
					BLOWER	RETURN AIR CFM	MAX OUTSIDE AIR CFM	TOTAL CFM	WEIGHT (LBS)	ESP	HP	PHASE	VOLT	MCA	MDCP	OUTSIDE AIR		MIXED AIR		LEAVING AIR		CAPACITY		IEER	ISMRE	DISCHARGE		CAPACITY		MOISTURE REMOVAL RATE	GAS TYPE	INPUT BTUs	OUTPUT BTUs	TEMP RISE			
																DB	WB	DB	WB	DB	WB	DP	TOTAL			SENS.	DB	WB	DESIRED						MAX		
1	RTU-1	1	CASRTU3-1.400-24-15T-DOAS	CAPTIVEAIRE	24MF-3-RTU	3795	1705	5500	2626	0.750	7.50	3	208	79.5A	100A	81.6°F	75.8°F	77.0°F	66.7°F	55.9°F	55.6°F	55.5°F	186.0 MBH	122.8 MBH	18.8	5.7	70.0°F	60.9°F	85.1 MBH	129.6 MBH	57.8 LBS/HR	NATURAL	291447	236072	35°F	1,2,3,4,5,6,7,8,9,10,11,12,13,14,15,16,17,18	
2	RTU-2	1	CASRTU3-1.400-24-15T-DOAS	CAPTIVEAIRE	24MF-3-RTU	3795	1705	5500	2626	0.750	7.50	3	208	79.5A	100A	81.6°F	75.8°F	77.0°F	66.7°F	55.9°F	55.6°F	55.5°F	186.0 MBH	122.8 MBH	18.8	5.7	70.0°F	60.9°F	85.1 MBH	129.6 MBH	57.8 LBS/HR	NATURAL	291447	236072	35°F	1,2,3,4,5,6,7,8,9,10,11,12,13,14,15,16,17,18	

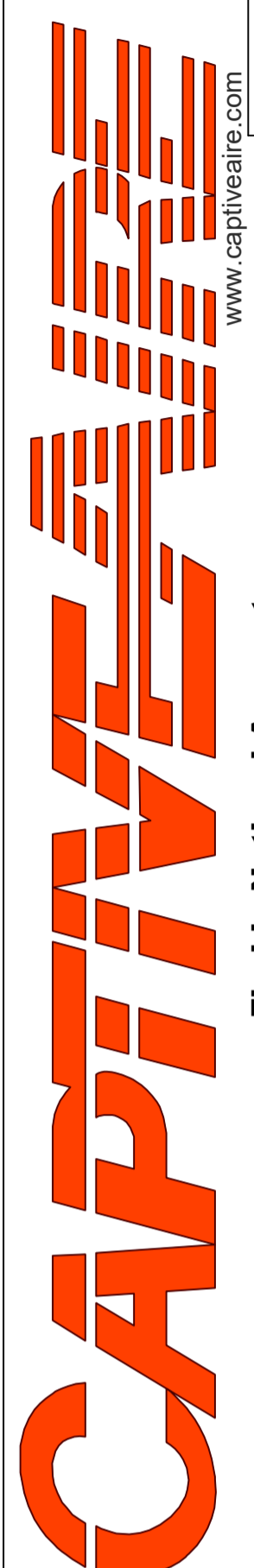
**NOTES:**

1. INVERTER SCROLL COMPRESSOR WITH INTEGRATED OIL SENSOR. DIGITAL OR STAGED SCROLL NOT AN APPROVED EQUAL
2. DIRECT DRIVE PLENUM BLOWER. BELT DRIVEN BLOWERS ARE NOT ACCEPTABLE
3. INTEGRATED MONITORING VIA CELLULAR CONNECTION BY MANUFACTURER
4. REFRIGERATION PRESSURE MONITORING ON HIGH AND LOW PRESSURE SIDE OF SYSTEM INCLUDED THROUGH DIGITAL INTERFACE
5. EC MOTOR CONDENSING FANS
6. ELECTRONIC EXPANSION VALVE. TXV NOT ACCEPTABLE
7. SUCTION LINE ACCUMULATOR
8. FACTORY COMMISSIONING WITH 5 YEAR PARTS WARRANTY, 25 YEAR WARRANTY ON STAINLESS STEEL HEAT EXCHANGER
9. AVERAGING INTAKE, EVAP AND DISCHARGE TEMPERATURE SENSORS (DISCHARGE SENSOR TO BE FACTORY MOUNTED WITHIN UNIT)
10. 2" EXTERIOR DUAL-WALL CONSTRUCTION W/ R-13 INSULATION-MINIMUM 20GA EXTERIOR W/ 14GA BASE
11. 81% EFFICIENT FURNACE, WITH MODULATING INDUCER TO MAINTAIN CONSTANT COMBUSTION EFFICIENCY ACROSS FIRING RANGE. 6:1 TURNDOWN WITH NG AND 5:1 TURNDOWN WITH LP
12. SUPPLY CFM MONITORING INTEGRAL TO UNIT WITH CFM MEASUREMENT INCLUDED THROUGH DIGITAL INTERFACE
13. FULLY MODULATING HOT GAS REHEAT
14. 15 DEGREE LOW AMBIENT OPERATION
15. HAIL GUARD FOR CONDENSING COIL
16. RTU ECONDMIZER WITH FIXED ENTHALPY CONTROL
17. BAROMETRIC RELIEF DAMPER

18. DOWN DISCHARGE/DOWN RETURN

**REVISIONS**

DESCRIPTION	DATE



**CAPTIVE AIR**  
 Florida National Accounts  
 239 N Hunt Club Blvd., STE 201, Longwood, FL 32779 PHONE: (407) 682-3100 FAX: (919) 227-5913 EMAIL: reg60@captiveaire.com  
 www.captiveaire.com

CULVERS GREEN BAY WI  
 GREEN BAY, WI, 54303

**DATE:** 8/19/2022  
**DWG.#:** 5607542  
**DRAWN BY:** studdy jr  
**SCALE:** 3/4" = 1'-0"  
**MASTER DRAWING**

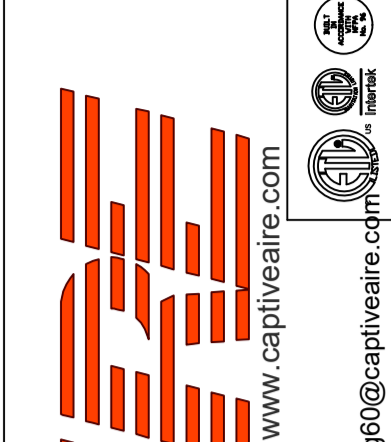
**SHEET NO.**  
 1

FAN OPTIONS

FAN UNIT NO	TAG	QTY	DESCRIPTION		
1	RTU-1	1	RTU HEATED FURNACE CONDENSATE DRAIN KIT. REQUIRED FOR WINTER DESIGN TEMP OF 0 DEGREES F AND LOWER		
		1	INLET PRESSURE GAUGE, 0-35"		
		1	MANIFOLD PRESSURE GAUGE, 0 TO 10" WC, 1 FURNACE		
		1	RTU TOTAL CFM MONITORING		
		1	SHIP LOOSE GAS STRAINER 3/4"		
		1	SINGLE POINT ELECTRICAL CONNECTION FOR RTU. 750VA TRANSFORMER USED. IF A NON-DCV PREWIRE CONTROLS THIS UNIT, THE #28, #47, "MA", OR "E2" PREWIRE OPTION MUST BE SELECTED. DOES NOT PROVIDE SUPPLY STARTER IN PREWIRE		
		1	CASLINK BUILDING MONITORING SYSTEM - INTERNET OR CELLULAR CONNECTION REQUIRED		
		1	LOW AMBIENT COOLING OPERATION - DOWN TO 0F AMBIENT		
		1	RTU3 DOWN DISCHARGE		
		1	2" MERV 13 FILTERS FOR RTU3 (QTY. 4)		
		1	2" MERV 8 FILTERS FOR RTU3 (QTY. 4)		
		1	OVERHEAT STAT		
		1	VFD FACTORY MOUNTED AND WIRED IN RTU COMMERCIAL CONTROL VESTIBULE		
		1	CONTROL PANEL ENCLOSURE HEATER - RECOMMENDED FOR WINTER DESIGN TEMPERATURES LESS THAN 0°F		
		1	15 TON MODULATING COOLING OPTION, 208/230V. R410A REFRIGERANT, VARIABLE SPEED COMPRESSOR, ECM CONDENSING FANS		
		1	15 TON MODULATING REHEAT OPTION - SPACE DEWPOINT CONTROL		
		1	REMOTE TEMPERATURE AND HUMIDITY SPACE SENSOR		
		1	RTU RETURN MOUNTED SMOKE DETECTOR AND SAMPLING TUBE - FACTORY INSTALLED		
		1	OCCUPIED SCHEDULING		
		1	RTU3 CONVENIENCE OUTLET (GFCI), 15 AMP - REQUIRES SEPARATE 120V CONNECTION. INCLUDES RECEPTACLE, COVER AND J-BOX		
		1	RTU ECONDMIZER - FIXED ENTHALPY CONTROL		
		1	RTU3 ECONDMIZER BAROMETRIC RELIEF		
		1	RTU3 HAIL GUARD		
		1	RTU INTAKE/RETURN DAMPER - MANUAL CONTROL VIA HMI		
		1	RTU3 DOWN RETURN		
		1	FREEZE/STAT		
		1	VAV PACKAGE W/ MANUAL/DDC CONTROL (S71 VFD INCLUDED)		
		1	5 YEAR ENTIRE UNIT PARTS WARRANTY, 10 YEAR ENTIRE UNIT PARTS WARRANTY WITH REMOTE MONITORING AND CAPTIVEAIRE SERVICE CONTRACT, 25 YEAR STAINLESS STEEL FURNACE PARTS WARRANTY (SEE ADDITIONAL DETAILS)		
		2	RTU-2	1	RTU HEATED FURNACE CONDENSATE DRAIN KIT. REQUIRED FOR WINTER DESIGN TEMP OF 0 DEGREES F AND LOWER
				1	INLET PRESSURE GAUGE, 0-35"
				1	MANIFOLD PRESSURE GAUGE, 0 TO 10" WC, 1 FURNACE
				1	RTU TOTAL CFM MONITORING
1	SHIP LOOSE GAS STRAINER 3/4"				
1	SINGLE POINT ELECTRICAL CONNECTION FOR RTU. 750VA TRANSFORMER USED. IF A NON-DCV PREWIRE CONTROLS THIS UNIT, THE #28, #47, "MA", OR "E2" PREWIRE OPTION MUST BE SELECTED. DOES NOT PROVIDE SUPPLY STARTER IN PREWIRE				
1	CASLINK BUILDING MONITORING SYSTEM - INTERNET OR CELLULAR CONNECTION REQUIRED				
1	LOW AMBIENT COOLING OPERATION - DOWN TO 0F AMBIENT				
1	RTU3 DOWN DISCHARGE				
1	2" MERV 13 FILTERS FOR RTU3 (QTY. 4)				
1	2" MERV 8 FILTERS FOR RTU3 (QTY. 4)				
1	OVERHEAT STAT				
1	VFD FACTORY MOUNTED AND WIRED IN RTU COMMERCIAL CONTROL VESTIBULE				
1	CONTROL PANEL ENCLOSURE HEATER - RECOMMENDED FOR WINTER DESIGN TEMPERATURES LESS THAN 0°F				
1	15 TON MODULATING COOLING OPTION, 208/230V. R410A REFRIGERANT, VARIABLE SPEED COMPRESSOR, ECM CONDENSING FANS				
1	15 TON MODULATING REHEAT OPTION - SPACE DEWPOINT CONTROL				
1	REMOTE TEMPERATURE AND HUMIDITY SPACE SENSOR				
1	RTU RETURN MOUNTED SMOKE DETECTOR AND SAMPLING TUBE - FACTORY INSTALLED				
1	OCCUPIED SCHEDULING				
1	RTU3 CONVENIENCE OUTLET (GFCI), 15 AMP - REQUIRES SEPARATE 120V CONNECTION. INCLUDES RECEPTACLE, COVER AND J-BOX				
1	RTU ECONDMIZER - FIXED ENTHALPY CONTROL				
1	RTU3 ECONDMIZER BAROMETRIC RELIEF				
1	RTU3 HAIL GUARD				
1	RTU INTAKE/RETURN DAMPER - MANUAL CONTROL VIA HMI				
1	RTU3 DOWN RETURN				
1	FREEZE/STAT				
1	VAV PACKAGE W/ MANUAL/DDC CONTROL (S71 VFD INCLUDED)				
1	5 YEAR ENTIRE UNIT PARTS WARRANTY, 10 YEAR ENTIRE UNIT PARTS WARRANTY WITH REMOTE MONITORING AND CAPTIVEAIRE SERVICE CONTRACT, 25 YEAR STAINLESS STEEL FURNACE PARTS WARRANTY (SEE ADDITIONAL DETAILS)				

REVISIONS

DESCRIPTION	DATE



CULVERS GREEN BAY WI  
 GREEN BAY, WI, 54303

DATE: 8/19/2022

DWG.#:  
5607542

DRAWN BY: sluddy jr

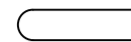
SCALE:  
3/4" = 1'-0"

MASTER DRAWING

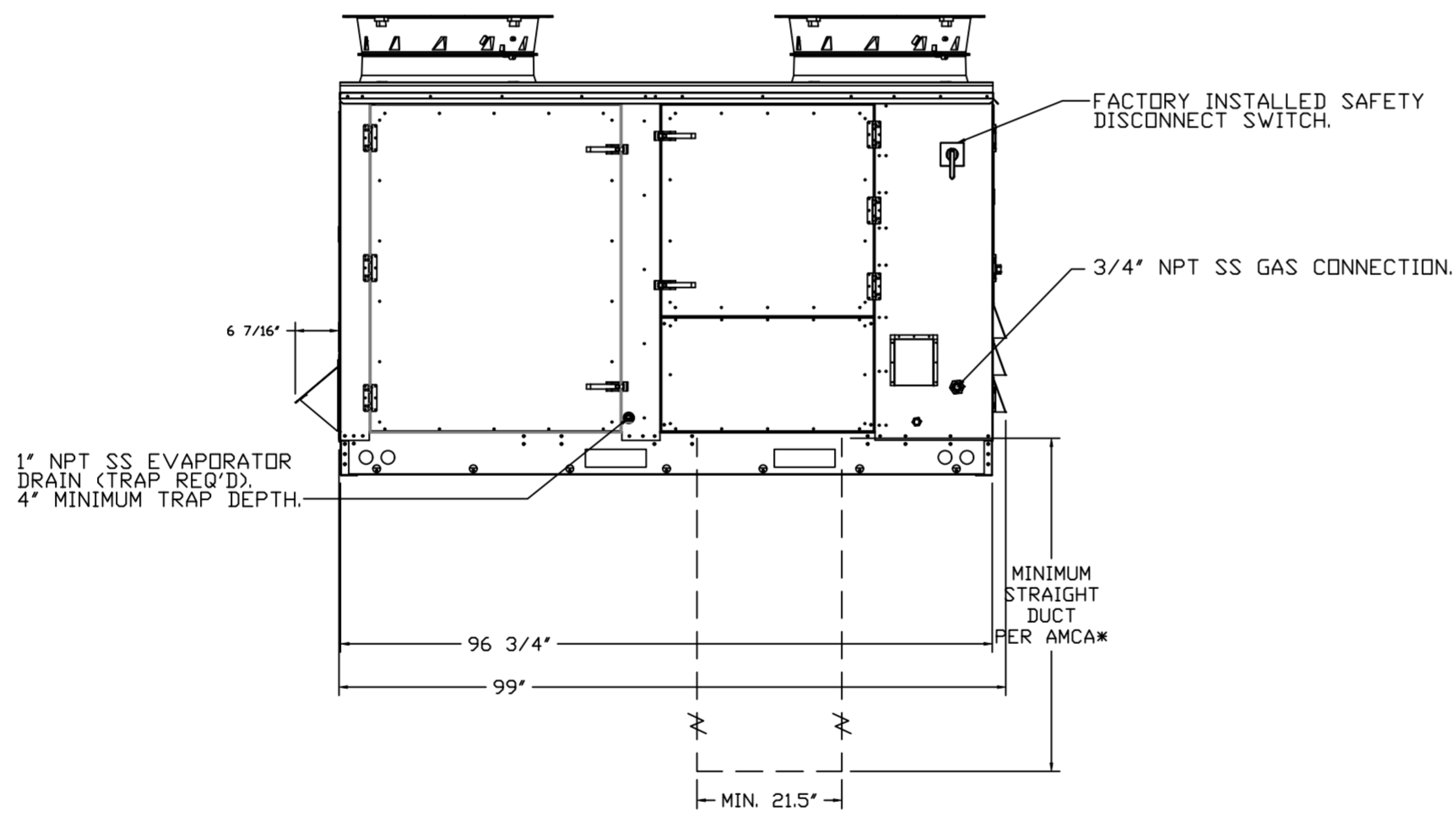
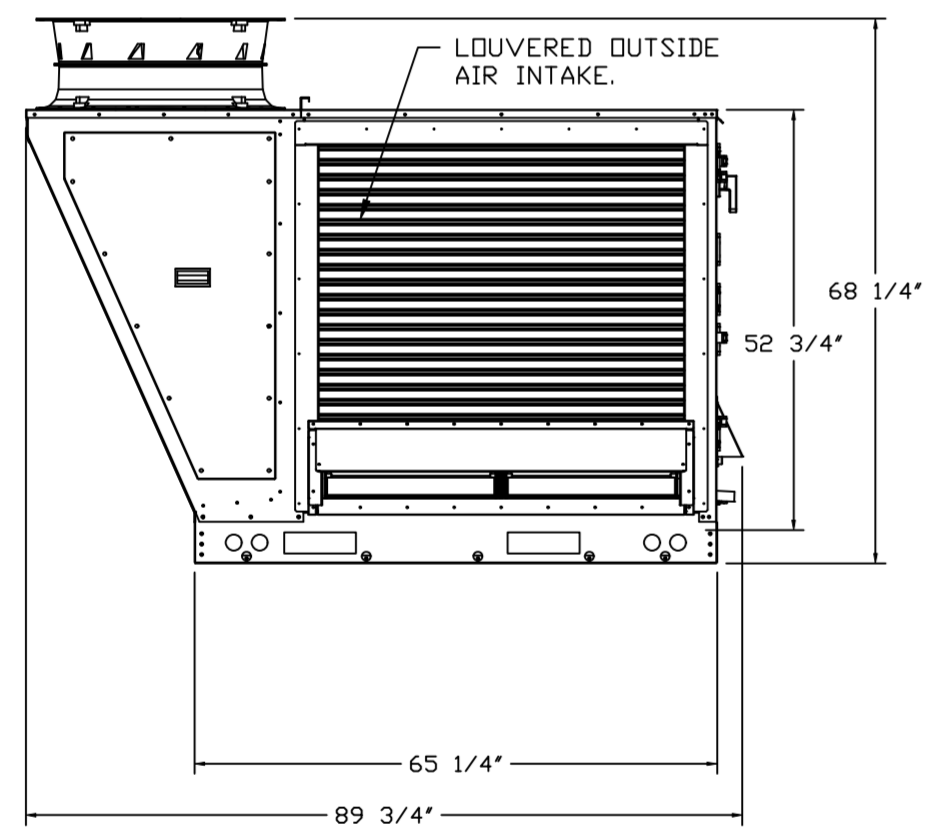
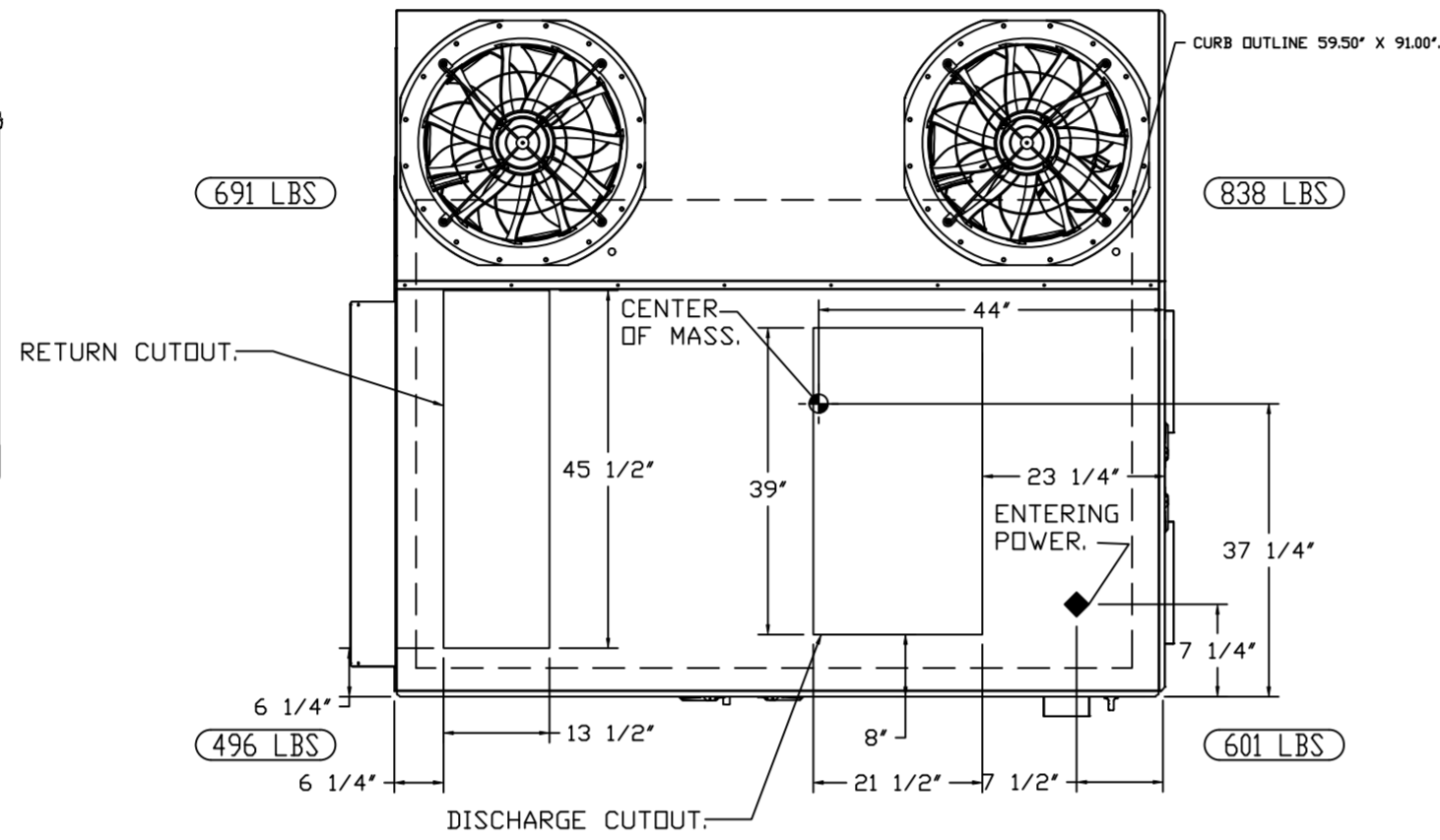
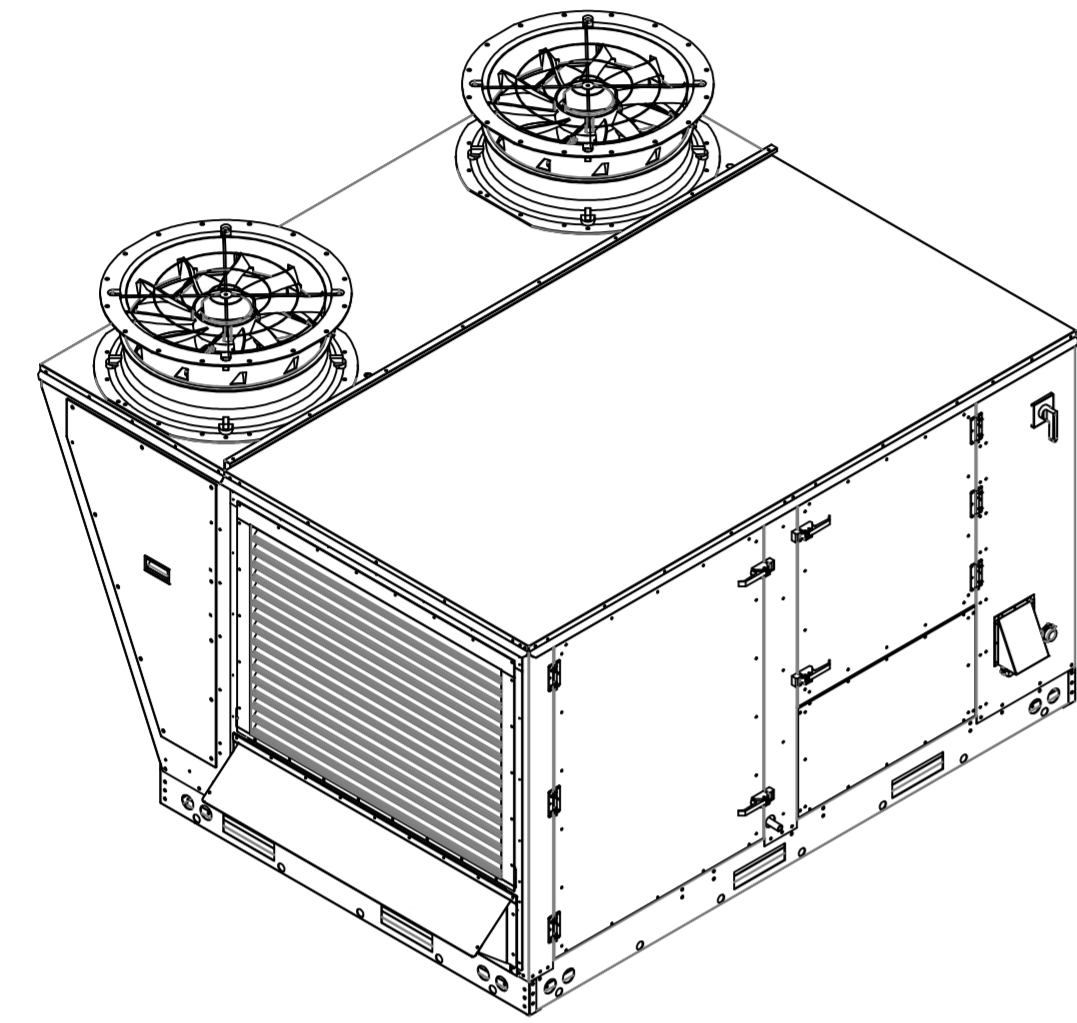
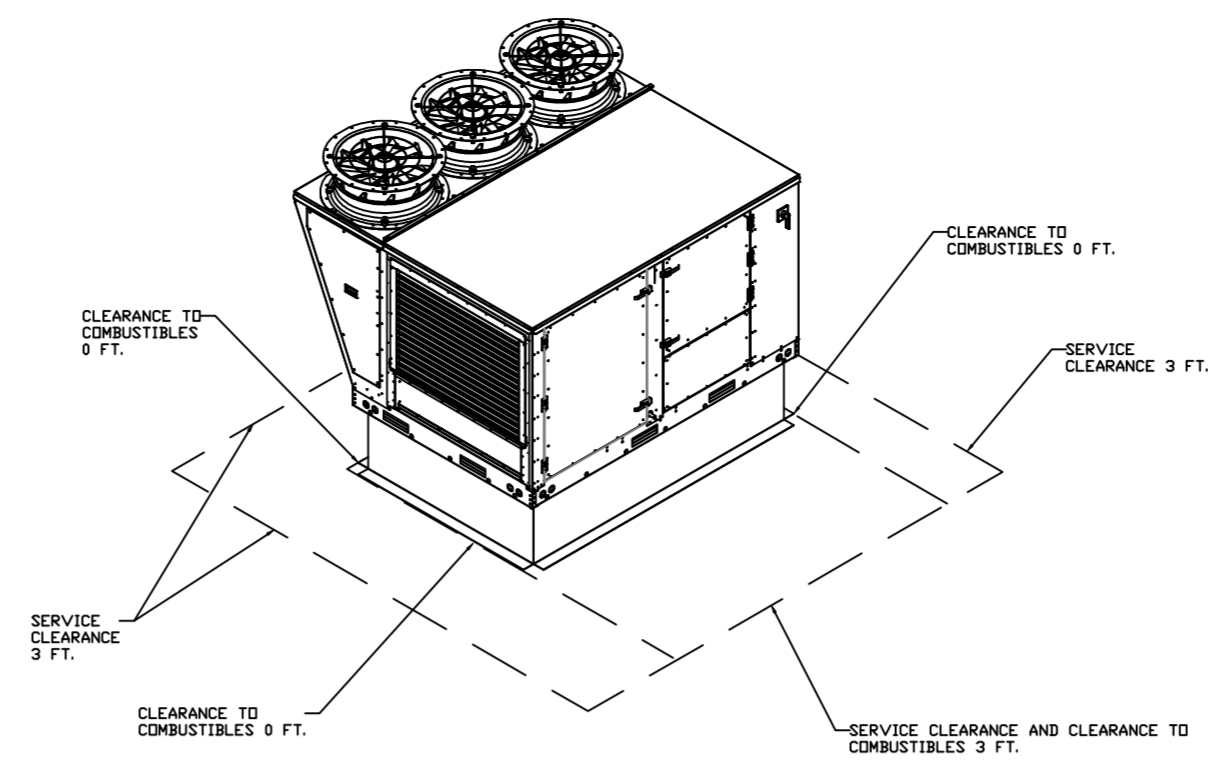
SHEET NO.  
2

FAN #1 (RTU-1), #2 (RTU-2) - CASRTU3-I.400-24-15T-DDAS  
HEATER

NOTES:

- DO NOT OBSTRUCT OUTSIDE AIR INLET, OUTSIDE AIR COIL OR OUTSIDE AIR FAN.
-  DENOTES CORNER WEIGHT.

\*NOTE: SUPPLY DUCT MUST BE INSTALLED TO MEET SMACNA STANDARDS. A MINIMUM STRAIGHT DUCT LENGTH MUST BE MAINTAINED DOWNSTREAM OF UNIT DISCHARGE AS OUTLINED IN AMCA PUBLICATION 201. WHEN USING RECTANGULAR DUCTWORK, ELBOWS MUST BE RADIUS THROAT, RADIUS BACK WITH TURNING VANES. FLEXIBLE DUCTWORK AND SQUARE THROAT/SQUARE BACK ELBOWS SHOULD NOT BE USED. ANY TRANSITION AND/OR TURNS IN THE DUCTWORK WILL CAUSE SYSTEM EFFECT. SYSTEM EFFECT WILL DRASTICALLY INCREASE STATIC PRESSURE AND REDUCE AIRFLOW. DO NOT RELY ON UNIT TO SUPPORT DUCT IN ANY WAY. FAILURE TO PROPERLY SIZE DUCTWORK MAY CAUSE SYSTEM EFFECTS AND REDUCE PERFORMANCE OF THE EQUIPMENT. SUGGESTED STRAIGHT DUCT SIZE IS 21.5" x 39".



REVISIONS	
DESCRIPTION	DATE


  
[www.captiveair.com](http://www.captiveair.com)
  
 Florida National Accounts
   
 239 N Hunt Club Blvd., STE 201, Longwood, FL 32779 PHONE: (407) 682-3100 FAX: (919) 227-5913 EMAIL: [reg6@captiveair.com](mailto:reg6@captiveair.com)

CULVERS GREEN BAY WI  
 GREEN BAY, WI, 54303

**DATE:** 8/19/2022  
**DWG.#:** 5607542  
**DRAWN BY:** sluddy jr  
**SCALE:** 1/2" = 1'-0"  
**MASTER DRAWING**

**SHEET NO.**  
 3

