

**DEMOLITION NOTES**

- MECHANICAL CONTRACTOR SHALL VERIFY EXISTING CONDITIONS PRIOR TO COMMENCING WITH DEMOLITION WORK. DIFFUSERS, GRILLES, DAMPERS, DUCT HEATERS, FANS, ETC. SHALL BE SALVAGED AS INDICATED ON PLAN FROM AREAS SCHEDULED FOR DEMOLITION.
- SALVAGED EQUIPMENT MAY BE RE-USED OR RELOCATED WHEN INDICATED PER SHEET M1.01. UNUSED ITEMS SHALL BE RETURNED TO DEWHAZE AMERICA SHARED SERVICES GROUP, LLC.
- ALL EXISTING MECHANICAL EQUIPMENT SHALL REMAIN UNLESS NOTED OTHERWISE.
- WHEN FOOD LION DIRECTS THAT THE FIRE ALARM SYSTEM IS BEING UPGRADED (VERIFY WITH SESCO), THE FIRE ALARM CONTRACTOR WILL INSTALL AND WIRE ALL NEW DUCT DETECTORS IN ACCORDANCE WITH LOCAL CODE. SESCO WILL BE IN THE INTERFACE FROM THE FIRE ALARM SYSTEM TO THE ECP PANEL. ONCE DIRECTED BY SESCO THE MECHANICAL CONTRACTOR WILL BE RESPONSIBLE FOR REMOVING ALL OLD SMOKE DETECTORS. WIRING FROM DETECTORS IS TO BE REMOVED TO ASSOCIATED JUNCTION BOXES AND CAPPED OFF WITH WIRE NUTS. WIRING FROM ECP TERMINALS IS TO BE REMOVED TO TROUGH AND CAPPED OFF WITH WIRE NUTS.

**SYMBOL LEGEND**

20x20 EXISTING DUCTWORK TO REMAIN - SIZE AS INDICATED. FIRST DIMENSION IS FACE OF DUCT SHOWN ON PLAN.

EXISTING DUCTWORK TO BE REMOVED.

MOTOR OPERATED DAMPER

MANUAL VOLUME DAMPER

LIMIT OF REMOVED AND/OR ABANDONED DUCTWORK

**SENSOR LEGEND**

SMOKE DETECTOR

RELATIVE HUMIDITY

TEMPERATURE

AIR PRESSURE SWITCH

THERMOSTAT

DISCHARGE AIR SENSOR

**ABBREVIATIONS**

AHU AIR HANDLING UNIT

A.F.F. ABOVE FINISHED FLOOR

O.A. OUTSIDE AIR

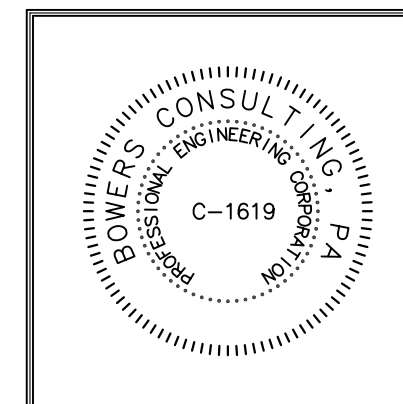
S.A. SUPPLY AIR

R.A. RETURN AIR

RTU ROOFTOP UNIT (AIR CONDITIONING)

REVISIONS

No.	Description	Date



261 West Bute St.  
Norfolk, VA 23510  
757.627.2791

**RFS Architects**  
ARCHITECTURE + PLANNING + INTERIORS



**FOOD LION 2856**  
742 NC-27  
LINCOLNTON, NC 28092

**MECHANICAL DEMOLITION PLAN**

**DRAWING FILE NAME**  
2856 M0.01\_00

**RFS JOB #**  
2022-004

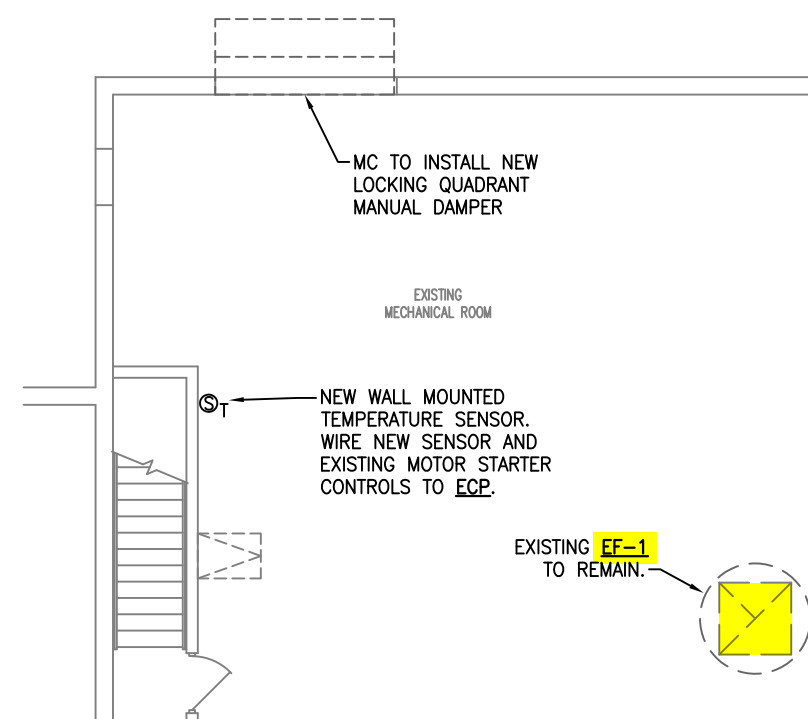
**DATE**  
04/29/22

**M0.01**

1 OF 5

**BOWERS CONSULTING, P.A.**  
1620 South MLK, Jr. Avenue - Suite 106  
Salisbury, NC 28144  
T: 704-690-0075 F: 704-690-0051  
NC PE CORPORATION C-1618  
GA PE CORPORATION 069574  
VA PE CORPORATION 046206434  
TN PE CORPORATION 5181

MECHANICAL DEMOLITION PLAN  
SCALE: 3/32" = 1'-0"



- NOTE:
- MC TO PERFORM THE FOLLOWING SERVICES/CHECKS ON EXISTING ROOFTOP AIR HANDLING UNITS OVER TO TMS:
1. REPLACE ALL SUCTION AND LIQUID LINE FILTER/DRIERS AT THE START OF THE PROJECT. LEAVE OLD FILTERS IN THE SYSTEM FOUR FOR SESCO INSPECTION.
  2. ALL COLES TO BE WORKED COMPLETELY.
  3. REPLACE BELTS FOR SUPPLY FAN.
  4. REPLACE ALL DOOR GASKETING.
  5. RE-SEAL ALL EXTERIOR SEAMS WITH ALUMINUM SILICONE.
  6. SYSTEM REFRIGERANT CHARGE IS TO BE EVALUATED.
  7. REPLACE ANY LEAKY WIRING AS NECESSARY.
  8. COMPRESSORS AND CONDENSER FANS ARE TO BE EVALUATED BY SYSTEM.
  9. CONTROLS AND MOTOR STARTERS ARE TO BE EVALUATED BY SYSTEM.
  10. GAS HEAT EXCHANGERS SHALL BE EVALUATED.
  11. SUBMIT EVALUATIONS TO SESCO SPECIALIST.
  12. WHERE IT IS REQUIRED TO REPLACE, CONTRACTOR IS TO FURNISH ALL NEEDED PARTS.

- EMS REMODEL NOTES
1. ALL CONTROL WIRING PROVIDED BY THE MECHANICAL CONTRACTOR IS TO BE 14 GA. STRANDED. BK CABLE IS NOT ALLOWED. ALL SHIELDED CABLE IS TO BE 20 GA. OR LARGER. ALL WIRING SHALL BE IN CONDUIT PROVIDED BY ELECTRICAL. SENSOR CABLE CANNOT BE IN THE SAME CONDUIT AS THE CONTROL WIRING. TERMINATIONS FOR THE MECHANICAL CONTROLS BY MECHANICAL CONTRACTOR.
  2. WHEN DIRECTED BY DELTAIZE AMERICA SHARED SERVICES GROUP, L.L.C. M.C. WILL BE RESPONSIBLE FOR REMOVING ALL OLD SMOKE DETECTORS. ONCE SYSTEM HAS BEEN SWITCHED OVER TO THE ALARM CONTACT, SESCO WILL NOTIFY C.C. IN WRITING. M.C. WILL THEN REMOVE OLD DETECTORS. WIRING FROM DETECTORS IS TO BE REMOVED TO ASSOCIATED JUNCTION BOXES AND CAPPED OFF WITH WIRE NUTS. WIRING FROM ECP TERMINALS IS TO BE REMOVED TO WIRING TROUGH AND CAPPED OFF WITH WIRE NUTS.

- RENOVATION NOTES
1. M.C. SHALL FIELD VERIFY ALL EXISTING CONDITIONS AT THE JOB SITE PRIOR TO BEGINNING WORK. NOTIFY FOOD LION CONSTRUCTION SUPERVISOR OF ANY DISCREPANCIES.
  2. FOR TRANSVERSE JOINTS 12" WIDE AND LARGER, PROPRIETARY DUCT CONNECTORS SHALL BE DUCT MADE BE WIND AND INSTALLED IN COMPLETE ACCORDANCE WITH MANUFACTURERS RECOMMENDATIONS. DUCT SEALANT TO BE DUCT MAKE 440 GASKET TYPE OR EQUAL. ALL DUCTWORK SHALL BE CONSTRUCTED TO A 2" PRESSURE CLASS. FOR TRANSVERSE JOINTS 11" WIDE OR SMALLER, THE ABOVE MAY BE USED, OR REFER TO SMOGMA TO DETERMINE PROPER DUCT CONSTRUCTION FOR THE SPECIFIED PRESSURE CLASS.
  3. ALL DUCTWORK WITH A WIDTH DIMENSION OF 48" OR LARGER SHALL BE SUPPORTED WITH TRAPEZOID TYPE HANGERS. SUPPORTS SHALL BE ATTACHED TO DUCTWORK PRIOR TO APPLICATION OF EXTERNAL INSULATION. INSULATION SHALL BE APPLIED TO COMPLETELY COVER DUCTWORK AND SUPPORTS.
  4. DUCTS CONNECTING TO NEW AND/OR RELOCATED DIFFUSERS SHALL BE INLET SIZE OF DIFFUSER. PROVIDE VOLUME DAMPER FOR BRANCH TAKEOFF AS INDICATED ON PLAN.
  5. ALL LONGITUDINAL SEAMS AND NON-CARTELED TRANSVERSE JOINTS SHALL BE EXTERNALLY SEALED WITH HIGH PRESSURE DUCT SEALER BY UNITED MCGILL OR EQUAL. SEALER SHALL BE APPLIED BY M.C. AND APPROVED BY FOOD LION CONSTRUCTION SUPERVISOR BEFORE DUCT INSULATION IS INSTALLED.
  6. ALL NEW DUCT SIZES SHOWN ARE "INSIDE-CLEAR" DIMENSIONS. ALL NEW DUCTWORK SHALL HAVE 2" 3/4" EXTERNALLY WRAPPED INSULATOR WITH WIPER DAMPERS (SEE SPECIFICATIONS). ROUTE ALL NEW DUCTWORK AS TIGHT TO ROOF JOISTS AS PRACTICAL. COORDINATE ROUTING TO AVOID CONFLICTS WITH OTHER TRADES.
  7. FLEXIBLE DUCT MAY BE USED AT END OF RUNS IN LENGTHS NOT EXCEEDING 4'-0". INSTALL PER SMOGMA STANDARDS (SEE SPECIFICATIONS).
  8. PROVIDE 807 METAL (24 GA. MINIMUM) DUCT ELBOW WITH 4 PCE GORE AT ALL CEILING DIFFUSER/GRILLE-TO-FLEX DUCT CONNECTIONS.
  9. M.C. SHALL VERIFY SIZE OF EXISTING DUCTWORK SCHEDULED TO REMAIN. EQUIPMENT OPENINGS AS REQUIRED FOR PROPER CONNECTION OF WIRE TO EXISTING.
  10. M.C. SHALL INSPECT AND REPAIR DUCTWORK AS REQUIRED TO PROVIDE A TIGHT AIR DISTRIBUTION SYSTEM. M.C. SHALL CAP AND INSULATE ALL OPEN DUCT TERMINATIONS AND OTHER OPENINGS IN EXISTING DUCTWORK DIRECTLY RESULTING FROM OR INCIDENTAL TO DEMOLITION. ALL SUPPLY AND RETURN OUTLETS SHALL BE BRANCHED TO THE AIR FLOW QUANTITIES SHOWN ON DRAWINGS.
  11. M.C. SHALL COORDINATE ALL WORK WITH OTHER TRADES TO AVOID CONFLICTS.
  12. COORDINATE ALL DIFFUSER AND GRILLE LOCATIONS WITH CEILING GRID AS SHOWN ON ARCHITECTURAL DRAWINGS.
  13. TEMPERATURE AND HUMIDITY SENSORS AND CONTROLS SHALL BE MOUNTED @ 5'-0" A.F.F. UNLESS OTHERWISE NOTED. VERIFY MOUNTING HEIGHTS, LOCATIONS, AND CONTROL SETTINGS WITH PROPER FOOD LION CONSTRUCTION SUPERVISOR.
  14. CONTROL WIRING FOR NEW SENSORS, MOTORIZED DAMPERS, ETC. TO BE FURNISHED AND INSTALLED BY M.C. CONTROL WIRING SHALL BE ROUTED TO ECP/DMC PANELS UNLESS OTHERWISE INDICATED. E.C. SHALL PROVIDE CONDUIT SYSTEM WITH PULL STRINGS. COORDINATE CONTROL WIRING WITH PROPER FOOD LION CONSTRUCTION SUPERVISOR.
  15. EXISTING MOTOR STARTER CONTROLS FOR THE MACHINE ROOM TO BE WIPED TO ECP.
  16. ALL SENSOR CONTROL WIRING SHALL BE SHIELDED (MINIMUM #22 AWG OR LARGER). CONTROL WIRING SHALL BE STRANDED (#14 AWG). DO NOT MIX SENSOR CABLE AND CONTROL WIRING IN SAME CONDUIT.
  17. M.C. TO COORDINATE DUCTWORK SIZES WITH CLEARANCES ABOVE CEILING. M.C. TO NOTIFY PROPER FOOD LION CONSTRUCTION SUPERVISOR OF ANY CONFLICTS.
  18. REFER TO SPECIFICATIONS, DIVISION 23 SECTIONS FOR ADDITIONAL MECHANICAL REQUIREMENTS.
  19. MECHANICAL CONTRACTOR IS RESPONSIBLE FOR CONNECTING/RECONNECTING AHU DRAINS.
  20. ALL EXHAUST HOODS SHALL BE INSTALLED 6'-8" ABOVE FINISHED FLOOR UNLESS NOTED OTHERWISE.
  21. THE MECHANICAL CONTRACTOR SHALL BE RESPONSIBLE FOR ALL LABOR, MATERIAL AND WORKMANSHIP INSTALLED BY HIM UNDER THIS SECTION OF THE SPECIFICATIONS AND TO CORRECT ANY DEFICIENCIES REMOVED BY FOOD LION. THIS GUARANTEE SHALL EXTEND FOR A PERIOD OF NOT LESS THAN TWELVE (12) MONTHS FROM THE DATE OF FINAL PROJECT ACCEPTANCE BY FOOD LION, AGAINST ANY DEFECTS OR SYSTEM FAILURE. ALL EQUIPMENT MANUFACTURERS WARRANTIES WHICH EXCEED BEYOND THE FIRST TWELVE (12) MONTHS SHALL BE TRANSFERRED TO FOOD LION. HOWEVER, IT SHALL BE UNDERSTOOD BY ALL PARTIES CONCERNED THAT THE WARRANTIES PROGRAM ONLY TO FURNISHING OF MATERIAL BY THE MANUFACTURER AND SHALL NOT INCLUDE REPLACEMENT LABOR COSTS, UNLESS OTHERWISE DESCRIBED BY THE MANUFACTURER.
  22. ALL RECOVERED REFRIGERANTS SHOULD BE DOCUMENTED ON THE REFRIGERANT RECLAIM FORM AND SUBMITTED TO NICK CORBAGIO BY EMAIL (NICK.CORBAGIO@MCKCORPORATION.COM). RECOVERED REFRIGERANT IS TO BE LEFT AT THE STORE FOR THE FOOD LION MAINTENANCE TEAM.



SENSOR LEGEND

⊙	⊙ <sub>SH</sub>	⊙ <sub>SA</sub>
⊙ <sub>T</sub>	⊙ <sub>SD</sub>	⊙ <sub>AS</sub>

NOTES:

1. THE E.C. IS RESPONSIBLE FOR PROVIDING COMMUNICATION CABLE FOR ALL REFRIGERATION CONTROLLERS AND THE HVAC CONTROLLERS. THIS WILL BE IN THE FORM OF CAT5 CABLES FOR EACH CONTROLLER WITH STORES THAT HAVE E-2 CONTROLLERS OR 4-WIRE SHIELDED CABLE WITH STORES THAT HAVE EARLIER VERSIONS OF EPC CONTROLLERS. COORDINATE WITH SESCO OR ENERGY TEAM MEMBER.
2. M.C. SHALL PROVIDE (3) PAIR OF CONTROL WIRES FROM EACH EXISTING AND/OR NEW REFRIGERATION BACK TO THE EXISTING AND/OR NEW ECP FOR RECLAIM HEAT STAGING. E.C. SHALL PROVIDE REQUIRED CONDUIT. EMS PERSONNEL SHALL MAKE FINAL TERMINATION AND PANEL MODIFICATIONS AS REQUIRED.
3. NEW AND/OR EXISTING SENSORS, CONTROLS, ETC. WITH NEW WIRING AND CONNECTIONS TO ECP/DMC AS APPLICABLE.

ABBREVIATIONS

AHU	AIR HANDLING UNIT	OA	OUTSIDE AIR
ATF	ABOVE FINISHED FLOOR	RTU	ROOFTOP UNIT (AIR CONDITIONING)

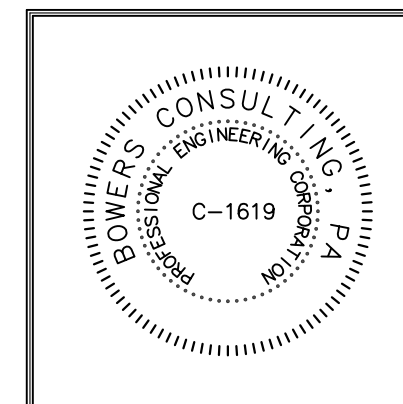
SYMBOL LEGEND

	NEW DUCTWORK - SIZE AS INDICATED. FIRST DIMENSION IS FACE OF DUCT SHOWN ON PLAN.		CONNECT TO EXISTING
	ELECTRIC DUCT HEATER		UNDER DOOR DOOR
	VOLUME DAMPER		NEW SUPPLY DIFFUSER
	EXISTING DUCTWORK RE-USED IN PLACE.		NEW RETURN GRILLE
	MOTOR OPERATED DAMPER (NEW OR EXISTING AS INDICATED)		RE-USED/RELOCATED EXISTING DIFFUSER

MECHANICAL FLOOR PLAN  
SCALE: 3/32" = 1'-0"

REVISIONS

No.	Description	Date
-----	-------------	------



**RFS Architects**  
ARCHITECTURE + PLANNING + INTERIORS

261 West Duke St.  
Norfolk, VA 23510  
757.627.2791



**FOOD LION 2856**  
742 NC-27  
LINCOLNTON, NC 28092

**MECHANICAL FLOOR PLAN**

DRAWING FILE NAME  
**2856 M1.01\_00**

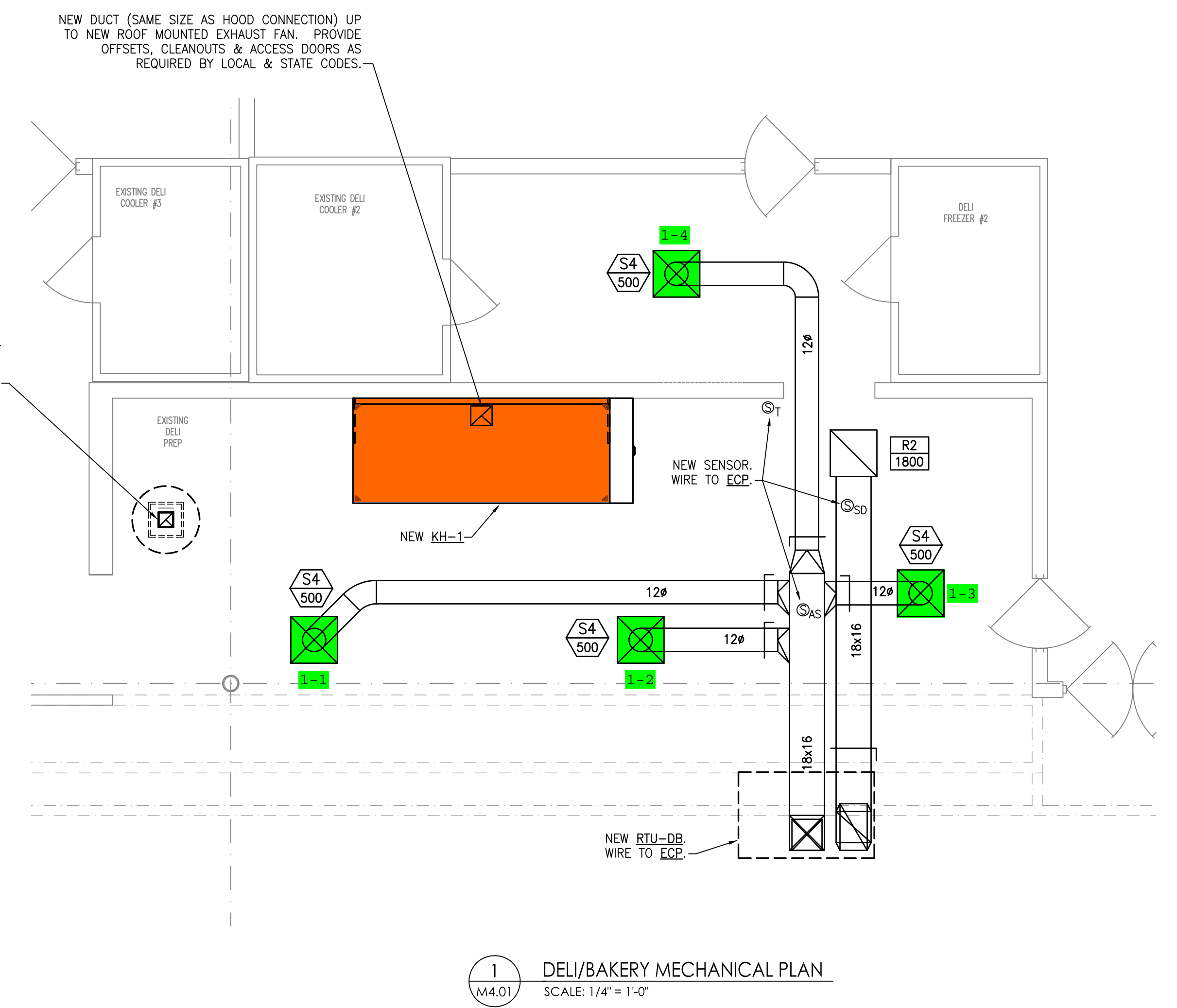
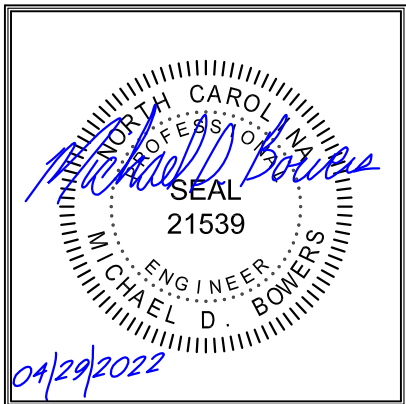
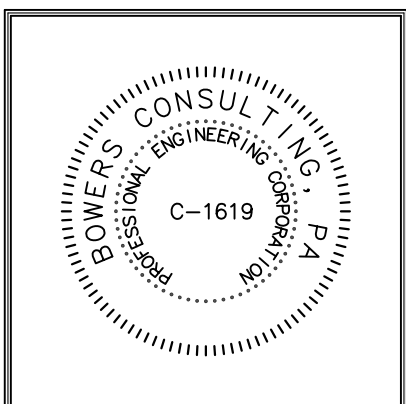
RFS JOB #  
**2022-004**

DATE  
**04/29/22**

**M1.01**

2 OF 5

**BOWERS CONSULTING, PA**  
1620 South MLK, Jr. Avenue - Suite 106  
Sallsbury, NC 28144  
T: 704-600-0075 F: 704-600-0051  
NC PE CORPORATION C-1690  
GA PE CORPORATION 069574  
VA PE CORPORATION 046006434  
TN PE CORPORATION 5181



**CONTROL LEGEND**

SD	SMOKE DETECTOR	SH	RELATIVE HUMIDITY SENSOR
T	TEMPERATURE SENSOR	AS	AIR PRESSURE SWITCH
TS	THERMOSTAT	AS	DISCHARGE AIR SENSOR

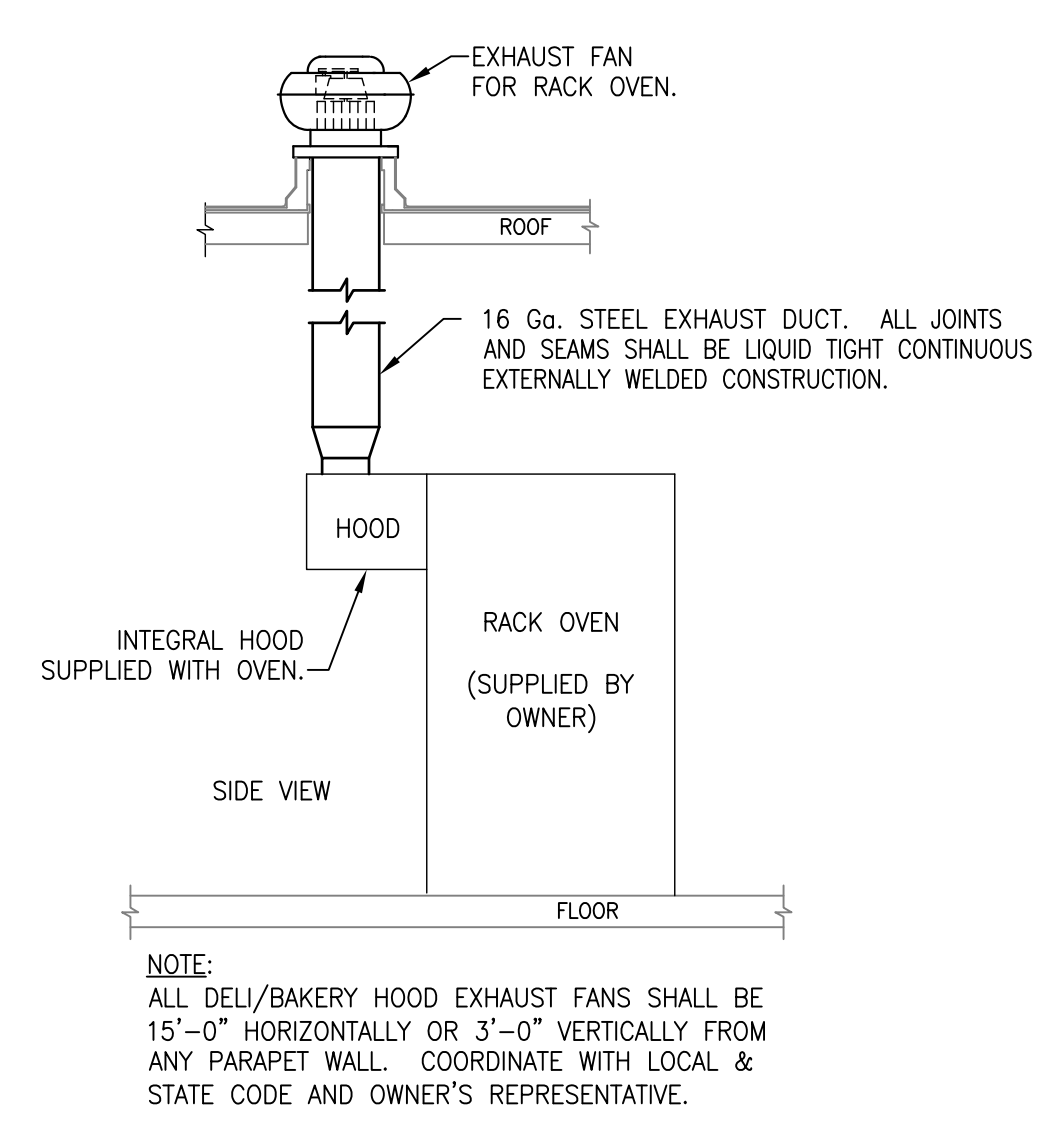
NOTE:  
SENSORS, WIRING, CONTROLS, ETC. WITH CONNECTIONS TO ECP/EMCC PANELS AS APPLICABLE. REFER TO CONTROL DRAWINGS M7.01, M7.02, M7.03 & M7.04.

- GENERAL NOTES**
- EXHAUST DUCT FOR KITCHEN HOODS SHALL BE 16 GA. STEEL. ALL JOINTS AND SEAMS SHALL BE LIQUID TIGHT CONTINUOUS EXTERNALLY WELDED CONSTRUCTION.
  - COORDINATE DIFFUSER LOCATIONS WITH REFLECTED CEILING PLAN.
  - MOUNT KITCHEN HOODS 6'-8" A.F.F.
  - ALL DUCT DIMENSIONS ARE SHOWN "METAL TO METAL" DIMENSIONS. SUPPLY DUCT SHALL HAVE 2", 3/4" POF, EXTERNALLY WRAPPED INSULATION WITH VAPOR BARRIER (SEE SPECIFICATIONS).
  - PROVIDE WALL COVER BETWEEN COOKING SURFACE AND KITCHEN HOOD. COVER SHALL BE SAME MATERIAL AS HOOD. SIZE: 48" HIGH x HOOD DIMENSION(S).
  - HOOD MANUFACTURER TO PROVIDE FIRE SUPPRESSION SYSTEM IN KITCHEN HOOD THAT WILL MEET LOCAL CODES (ANSUL R102 WET CHEMICAL).
  - GREASE EXHAUST DUCT SYSTEMS SERVING TYPE I HOODS SHALL HAVE A CLEARANCE TO COMBUSTIBLE CONSTRUCTION OF NOT LESS THAN 18 INCHES AND SHALL HAVE A CLEARANCE TO NONCOMBUSTIBLE CONSTRUCTION OF NOT LESS THAN 3 INCHES. WHERE CLEARANCE CANNOT BE PROVIDED, THE GREASE EXHAUST DUCT SYSTEM SHALL BE CONTINUOUSLY COVERED ON ALL SIDES WITH FIRE RATED DUCT WRAP FOR ZERO-CLEARANCE TO COMBUSTIBLES. EXTERNAL INSULATION FOR KITCHEN HOOD EXHAUST DUCT SHALL BE EQUAL TO TWO LAYERS OF 1/2" THICK, 6 pcf DENSITY DUCT WRAP EQUIVALENT TO 3M FIRE BARRIER DUCT WRAP 615+ (KITCHEN HOOD AND RANGE-OVEN EXHAUST).
  - MECHANICAL CONTRACTOR SHALL OBTAIN EQUIPMENT APPROVAL BY LOCAL FIRE AUTHORITY PRIOR TO EQUIPMENT MANUFACTURE.
  - MECHANICAL CONTRACTOR SHALL COORDINATE ALL WORK WITH OTHER TRADES TO AVOID CONFLICTS.
  - 120V CONTROL CIRCUIT AND POWER FOR KITCHEN HOOD SHALL BE SUPPLIED FROM ELECTRICAL PANEL IN DELI.
  - SEE SHEET M4.01 FOR RELATED MECHANICAL NOTES AND/OR SPECIFICATIONS.
  - REMOTE PULL STATION SHALL BE LOCATED AT OR NEAR A MEANS OF EGRESS FROM THE COOKING AREA, A MINIMUM OF 10 FEET AND A MAXIMUM 20 FEET FROM KITCHEN EXHAUST SYSTEM. REMOTE PULL STATION SHALL BE LOCATED 48" AFF. THE MANUAL ACTUATION SHALL REQUIRE A MAXIMUM 40 POUNDS FORCE AND A MAXIMUM 14 INCHES LENGTH OF PULL TO ACTIVATE THE FIRE SUPPRESSION SYSTEM.

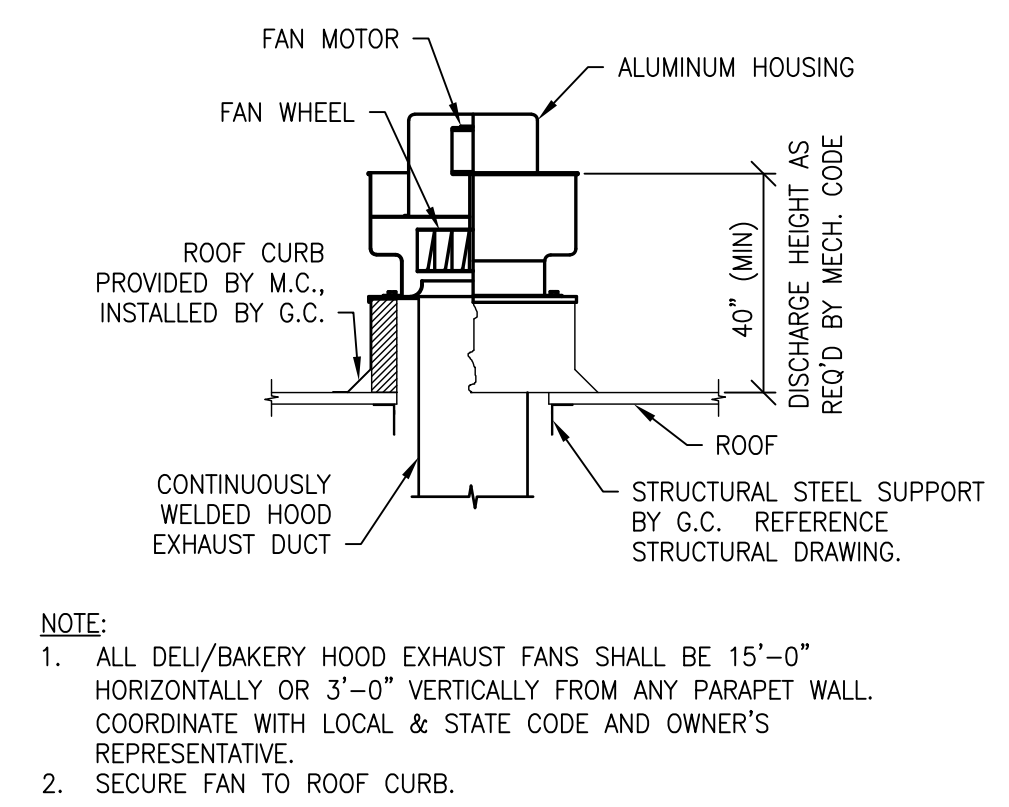
**DELI/BAKERY FIRE SUPPRESSION HOOD PRE-TEST AND FINAL TEST**

A PRE-TEST OF THE HOOD FIRE SUPPRESSION SYSTEM IS REQUIRED BY THE FOOD LION CONSTRUCTION DEPT. AND SHALL BE PERFORMED BY THE FIRE SUPPRESSION CONTRACTOR. G.C. AND HIS SUBS WILL BE REQUIRED TO BE ONSITE DURING TESTING. THE G.C. WILL BE REQUIRED TO CONTACT RICK THOMAS, SESCO, AT OFFICE: 704-243-3811 OR CELL: 704-906-5244, 3 BUSINESS DAYS IN ADVANCE OF THE FIRE MARSHAL TEST TO SCHEDULE PRETEST.

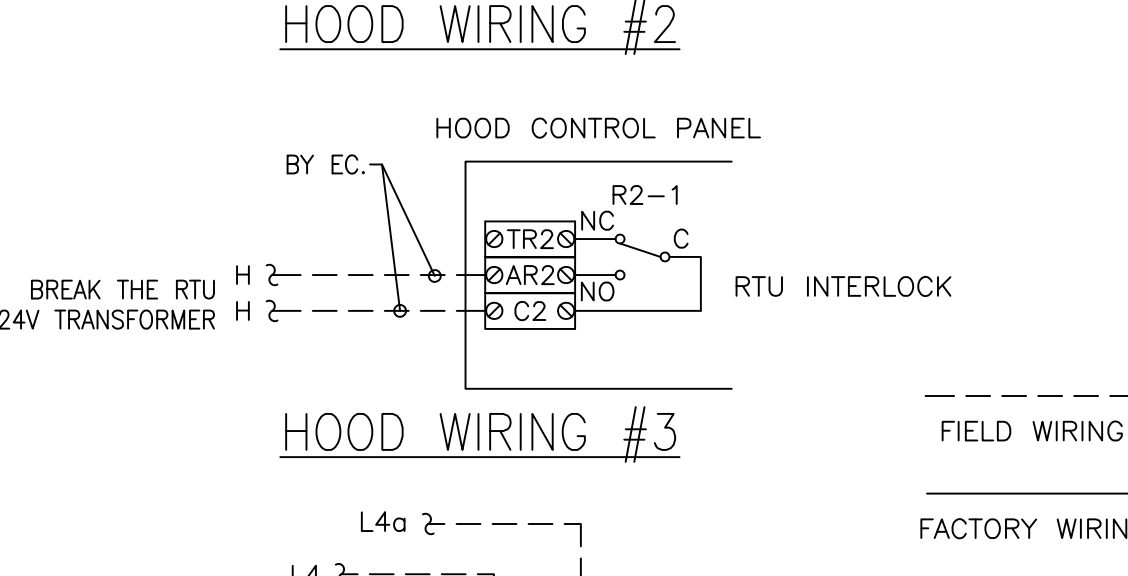
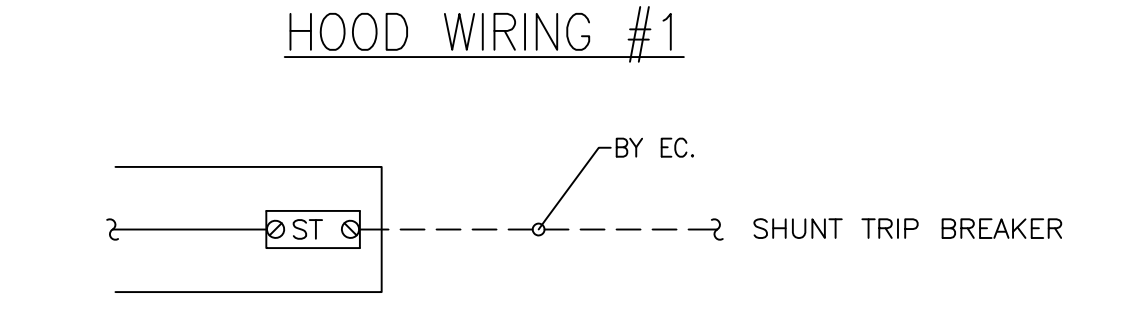
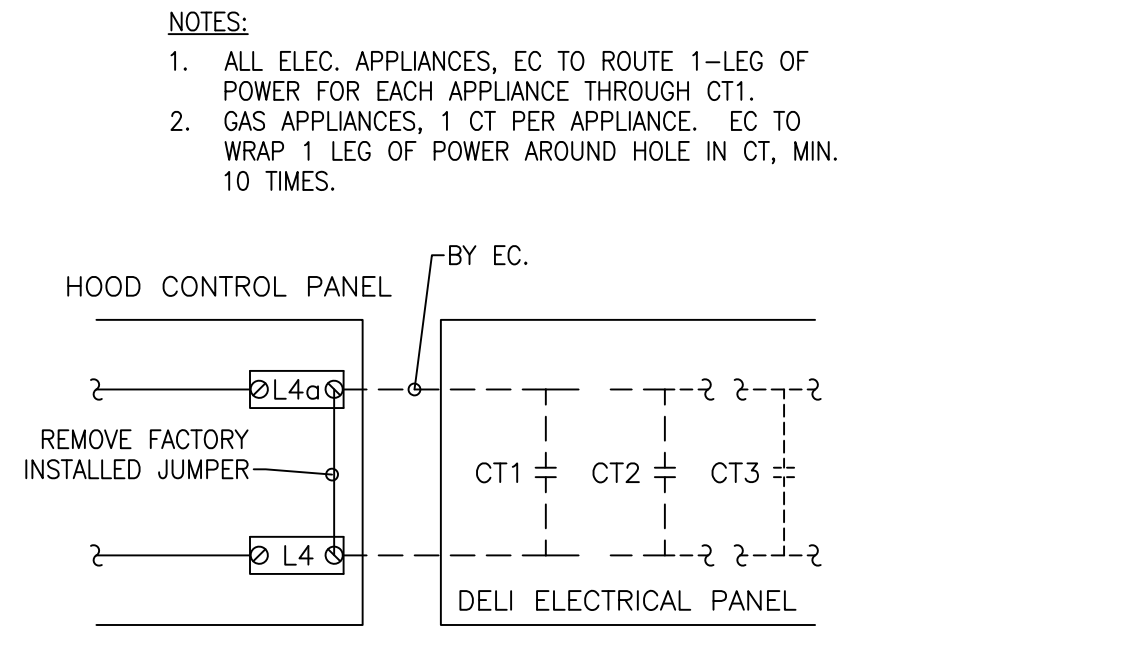
NOTE TO GC:  
HOOD PERFORMANCE TEST AND, IN SOME INSTANCES, AIR BALANCE OF HOOD EXHAUST FAN WILL BE REQUIRED. IT IS THE RESPONSIBILITY OF THE PERMIT HOLDER, MECH. CONTRACTOR, TO PROVIDE THIS SERVICE. THIS SERVICE MUST BE PRE-PLANNED SO THAT NO DELAYS WILL OCCUR TO DELI RE-OPENING.



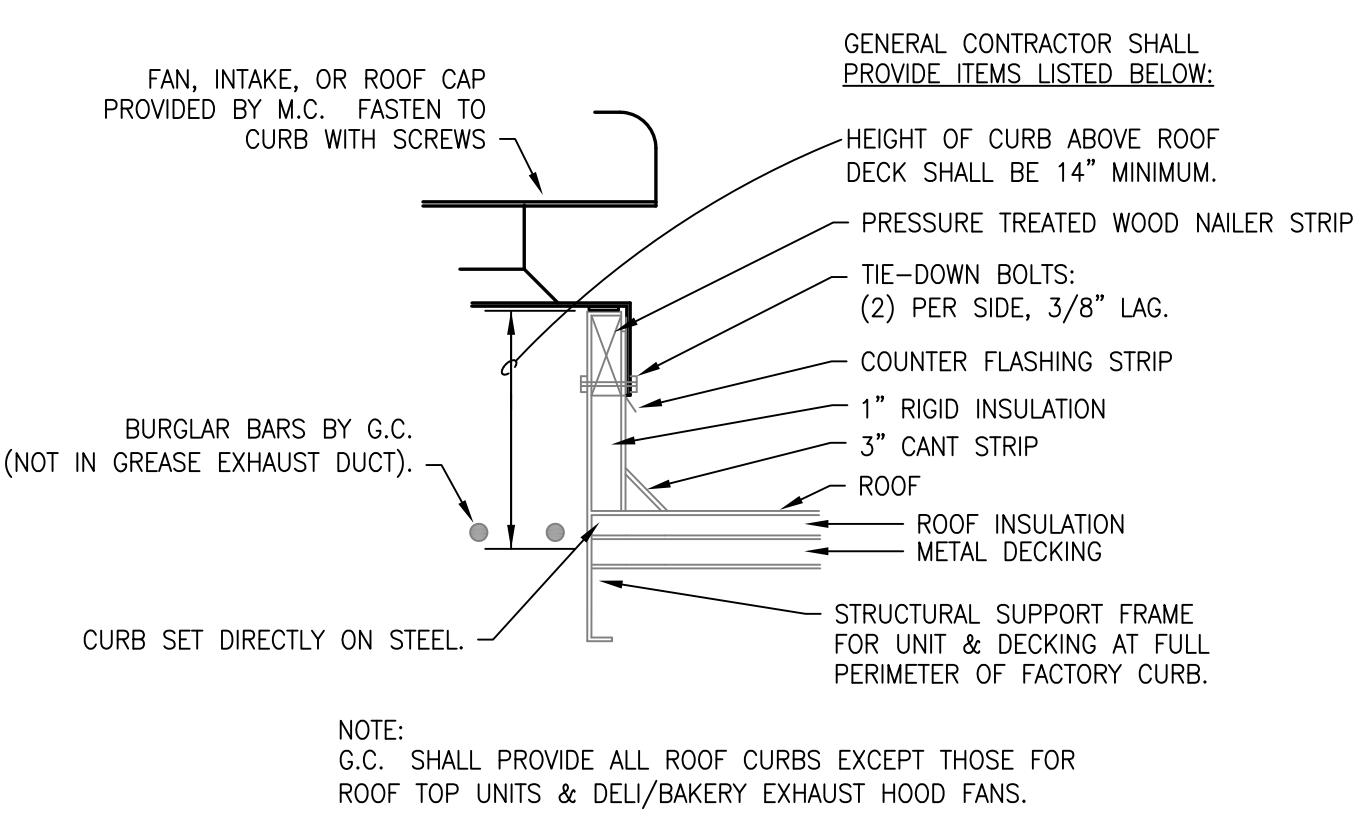
6 RACK OVEN EXHAUST INSTALLATION DETAIL  
NOT TO SCALE



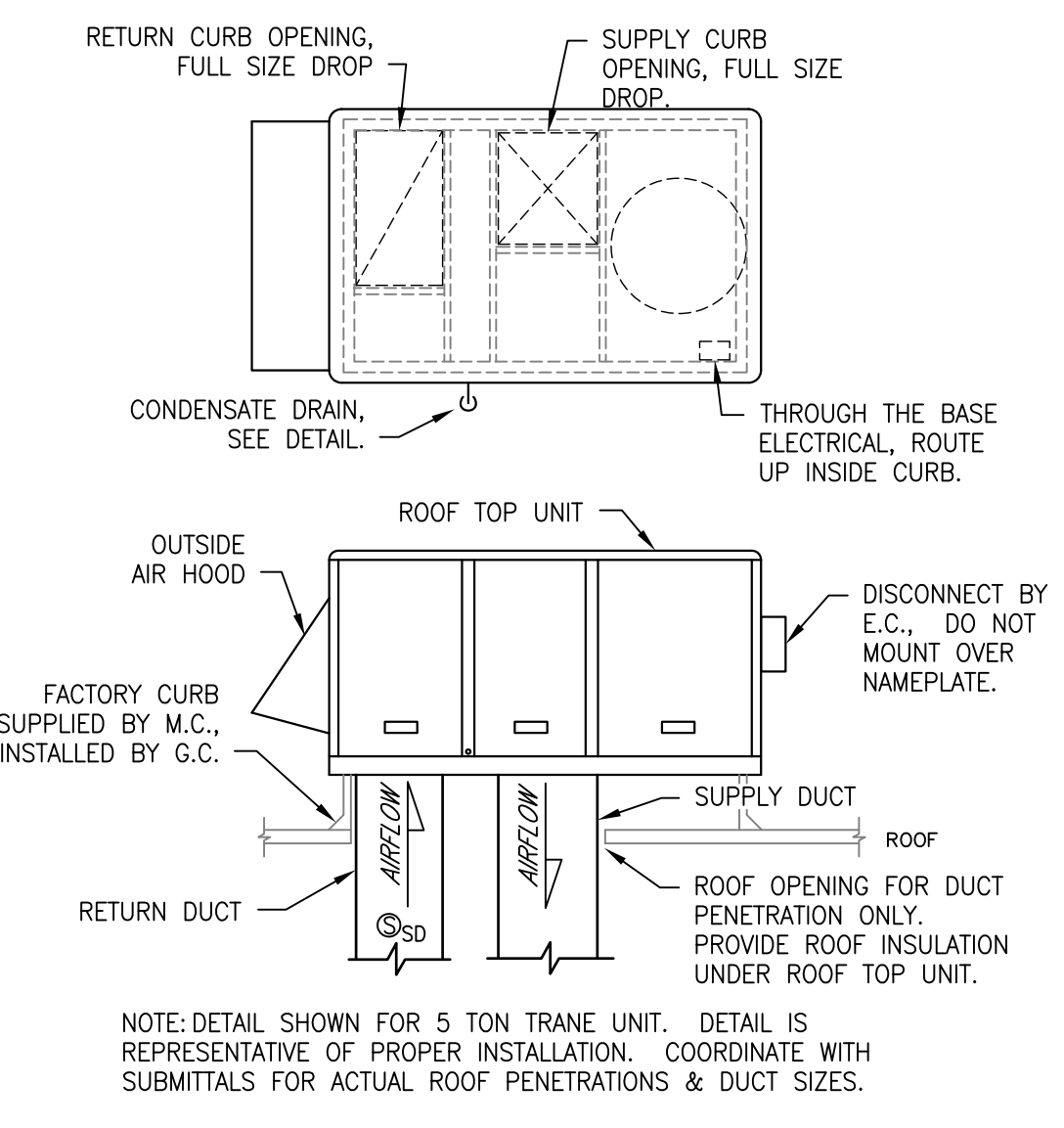
4 EXHAUST FAN INSTALLATION DETAIL  
NOT TO SCALE



2 HOOD WIRING DIAGRAMS  
NOT TO SCALE



5 EXHAUST FAN CURB INSTALLATION DETAIL  
NOT TO SCALE



3 RTU INSTALLATION DETAIL  
NOT TO SCALE

**DELI HOOD INSTALLATION & TESTING RESPONSIBILITIES**

ACTION TO BE TAKEN	RESPONSIBLE PARTY				REMARKS
	GC	EC	MC	FAC THROUGH SESCO	
WIRE CT		X			SEE WIRING DIAGRAM #1; CT TO BE ORDERED FROM SESCO
WIRE SHUNT		X			SEE DIAGRAM ON CA MAIN SHEET; REFER TO HOOD WIRING #2
SET TIME DELAY LEVEL TO SETTING 10 (30 MINUTES)		X			
WIRE RTU EMERGENCY SHUTDOWN		X	X		SEE HOOD WIRING DIAGRAM #3
CONNECT FIRE ALARM CONTACTS AT MICRO SWITCH				X	
FIELD WIRE MICROSWITCH TO REMOTE CABINET (WHEN APPLICABLE)		X			APPLIES WHEN HOOD CONTROL CABINET IS REMOTE MOUNTED.
HOOD PRETEST	X	X	X	X	SCHEDULED BY GC; LISTED PARTIES MUST BE PRESENT
AIR BALANCE, HOOD PERFORMANCE TEST			X		CONTACT SESCO FOR LIST OF POSSIBLE CONTRACTORS
FAN CURB SEAL			X		SEE HOOD CURB DETAIL (SHEET M4.01)
SCHEDULE ANSUL TEST WITH FIRE MARSHAL	X				
WIRING OF EQUIPMENT UNDER HOOD PRIOR TO PRETEST	X	X			

- NOTES:**
- THIS LIST IS INTENDED AS A GUIDE FOR DISCIPLINE RESPONSIBILITIES AND COORDINATION. IT IS NOT INTENDED TO IDENTIFY ALL ASPECTS OF THE HOOD INSTALLATION. REFER TO THE MECHANICAL PLANS AND SPECIFICATIONS FOR FURTHER INSTRUCTION.
  - REFER TO SPECIFICATIONS & DELI HOOD NOTES, SHEET M4.01, FOR PRETEST REQUIREMENTS AND INSTRUCTIONS.
  - ELECTRICAL CONTRACTOR SHALL INSTALL AND WIRE CT'S FOR THE INTERLOCK OF THE COOKING EQUIPMENT UNDER THE KITCHEN HOOD WITH THE EXHAUST FAN. THE CONTROL WIRING FOR THE CT'S WILL BE TAKEN FROM THE HOOD CONTROL PANEL TERMINAL L4 & L4A, 2#14, AND WIRING IN PARALLEL. REFER TO HOOD WIRING #1. CONTACT SESCO PARTS FOR THE NUMBER OF CT'S REQUIRED. ONE CT CAN BE USED FOR MORE THAN ONE PIECE OF EQUIPMENT DEPENDING ON THE WIRE SIZE. CONTACT SESCO COMMISSIONING WITH ANY QUESTIONS.
  - GC/MC SHALL COORDINATE TESTS AND INSPECTIONS WITH RICK THOMAS, SESCO, 704-243-3811, AND SHALL SCHEDULE WITH CODE OFFICIALS.
  - SOME JURISDICTIONS MAY REQUIRE A SEALED AFFIDAVIT FROM A LICENSED PROFESSIONAL ENGINEER. ADDITIONALLY, THE JURISDICTION MAY REQUIRE A TEST & BALANCE REPORT SPECIFICALLY FOR THE HOOD. THIS MAY OCCUR PRIOR TO THE OVERALL BUILDING TEST & BALANCE. AS SUCH, THIS HOOD FAN TEST & BALANCE WILL NEED TO BE INDEPENDENTLY COORDINATED AND PAID FOR BY THE M.C. SESCO WILL STILL TEST & BALANCE THE HOOD AS PART OF THE OVERALL BUILDING TEST & BALANCE AT THE END OF THE PROJECT. THE M.C. IS RESPONSIBLE FOR ASCERTAINING IF THE JURISDICTION HAS THESE REQUIREMENTS.
  - DEMOLITION - MC SHALL DISABLE THE FIRE SUPPRESSION OF HOODS TO BE REMOVED BY UNSCREWING CO2 CARTRIDGE IN FIRE SUPPRESSION PANEL. CONTACT SESCO FOR ANY QUESTIONS.
  - IF THE ELECTRICAL CIRCUIT FOR HOOD IS RE-USED AS AN EXISTING CIRCUIT THE EC SHALL VERIFY WITH SESCO THAT THE CIRCUIT IS NOT BROKE ACROSS ENERGY MANAGEMENT LOAD 4. THIS INCLUDES POWER AND/OR CONTROL CIRCUIT.

HOOD INFORMATION - JOB#5357930																		
HOOD NO	TAG	MODEL	MANUFACTURER	LENGTH	MAX COOKING TEMP	TYPE	APPLIANCE DUTY	PERSON CM/FT	TOTAL CFM	EXHAUST PLANUM					HOOD CONSTRUCTION			
										WIDTH	LENGTH	HEIGHT	DA	CFM	VEL	SP	END	ROW
1		5424	V-102-2	11' 0"	450 DEG	1	MEDIUM	105	1155	10"	11"	4"	1155	1512	-0.217"	430 SS WHERE EXPOSED	ALONE	ALONE

HOOD OPTIONS															
HOOD NO	TAG	TYPE	QTY	HEIGHT	LENGTH	EFFICIENCY @ 7 MICRONS	QTY	TYPE	WEIR GUARDS	LOCATION	SIZE	TYPE	MODEL #	QUANTITY	
1		SS BAFFLE WITH HANDLES	8	16"	16"	30%	8	L55 SERIES E26	NO	RIGHT	12"x4"x24"	ANSUL R-102	3.0	SC-11011002-FL	1 LIGHT

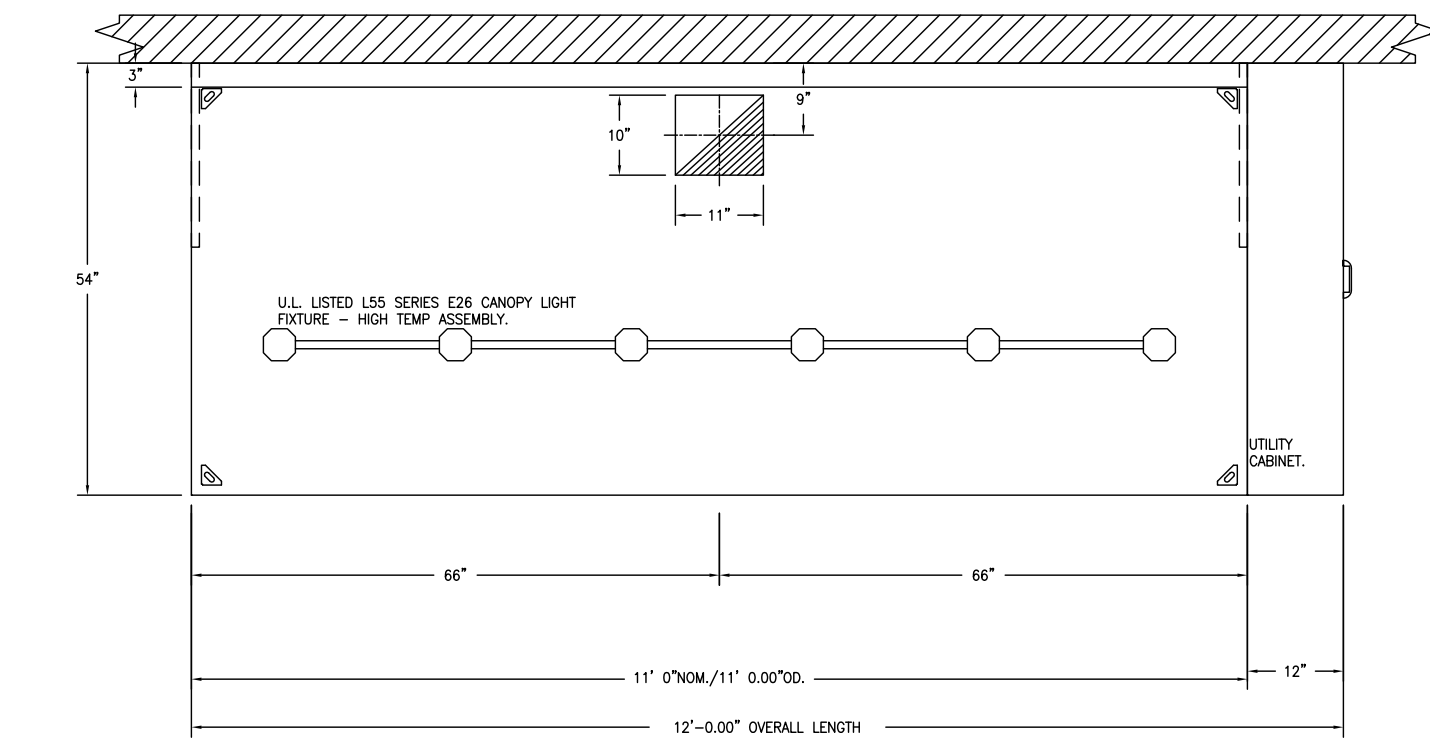
FIRE SYSTEM INFORMATION - JOB#5357930														
FIRE SYSTEM NO	TAG	TYPE	SIZE	FLOW POINTS	INSTALLATION	LOCATION ON HOOD								
1		ANSUL R102	3.0	9	FIRE CABINET RIGHT	RIGHT, HOOD 1								

EXHAUST FAN INFORMATION - JOB#5357930																
FAN UNIT NO	TAG	QTY	FAN UNIT MODEL #	MANUFACTURER	CFM	ESP	RPM	MOTOR ENCL.	HP	BHP	PHASE	VOLT	FLA	DISCHARGE VELOCITY	WEIGHT (LBS)	SONES
1		1	DUSDFEA	CAPTIVEAIRE	1155	0.500	1280	TEAO-ECM	0.500	0.2170	1	115	6.3	439 FPM	77	11.8

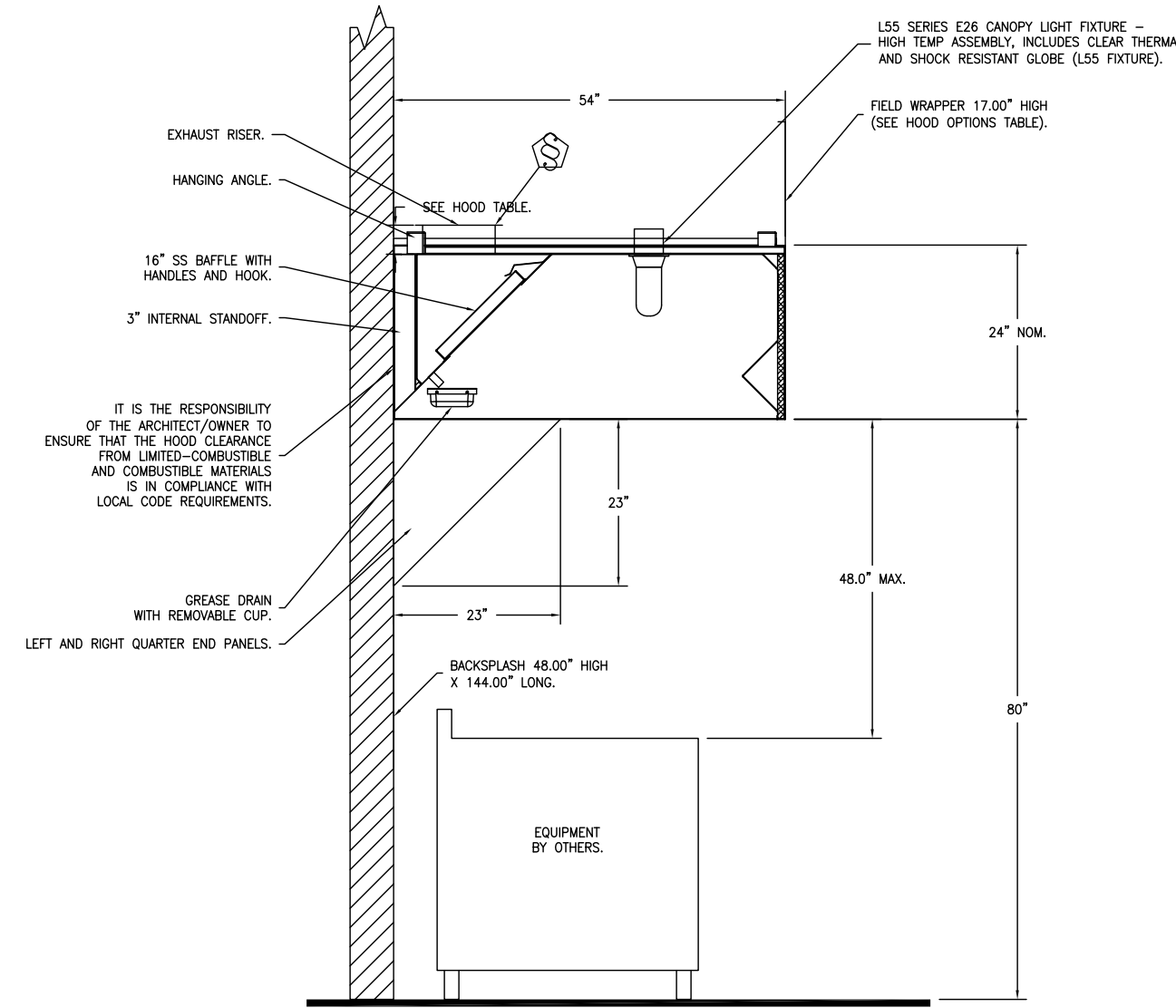
FAN OPTIONS														
FAN UNIT NO	TAG	QTY	DESCRIPTION											
1		1	GREASE BOX											
1		1	ECM WINDING PACKAGE - MANUAL OR 0-100% REFERENCE SPEED CONTROL (TELO MOTOR).											
1		1	2 YEAR PARTS WARRANTY											

FAN ACCESSORIES														
FAN UNIT NO	TAG	EXHAUST	GREASE	GRABBY	WALL	SIDE	GRAVITY	MOTORIZED	WALL					
		DISCHARGE	DAMPER	MOUNT	DISCHARGE	DAMPER	DAMPER	DAMPER	MOUNT					
1		YES	YES	YES	YES	YES	YES	YES	YES					

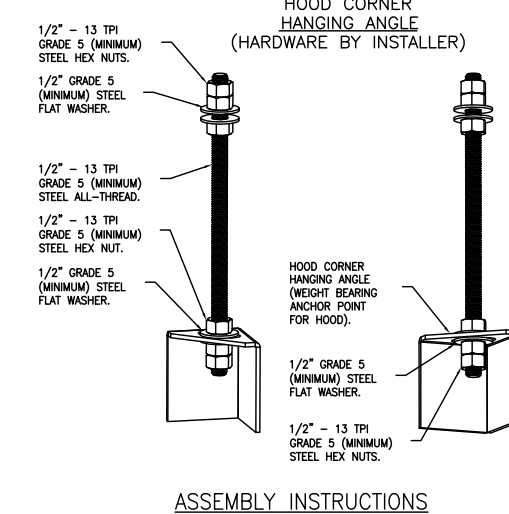
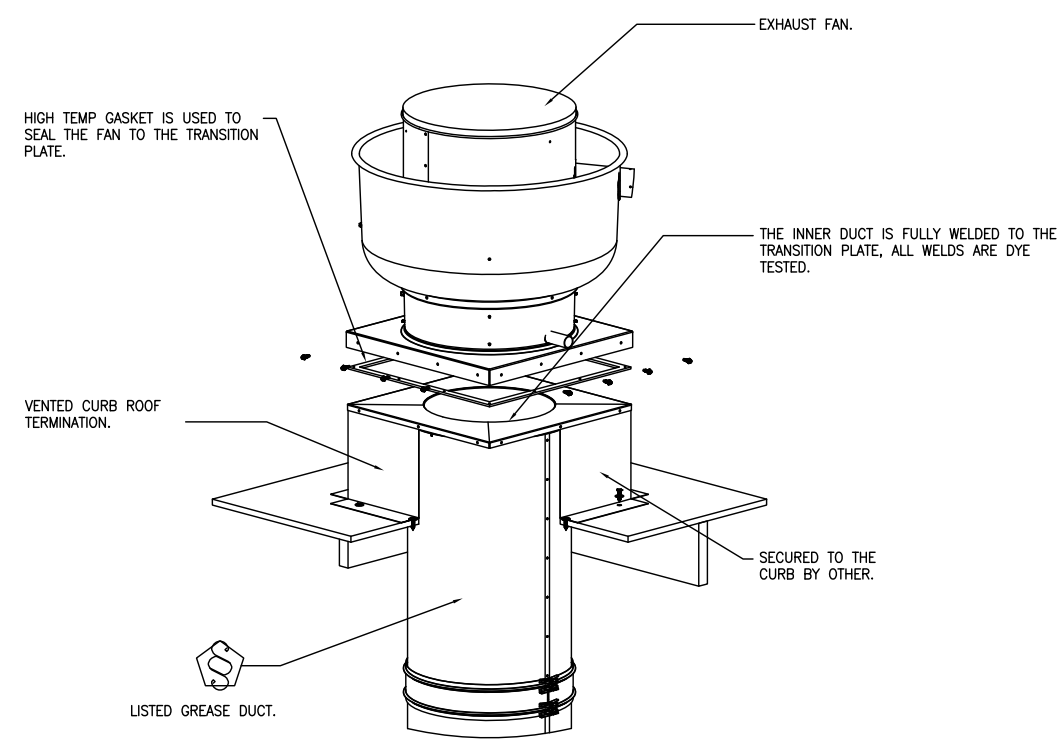
CURB ASSEMBLIES														
NO	ON FAN	WEIGHT	ITEM	SIZE										
1	# 1	38 LBS	CURB	18.000"W X 19.500"H X 26.000"L ALONG LENGTH, RIGHT VENTED, HINGED.										



PLAN VIEW - HOOD #1  
11' 0.00\"/>



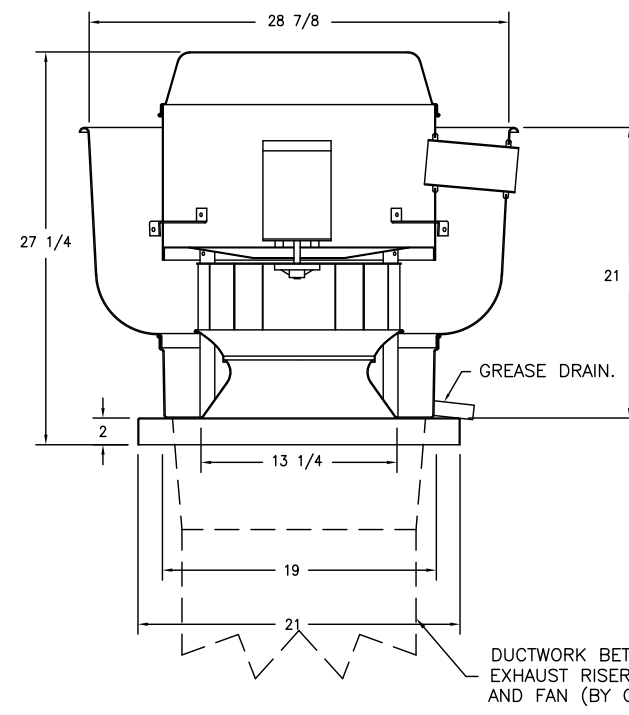
SECTION VIEW - MODEL 5424V-ND-2  
HOOD - #1



HANGING ANGLE MUST BE SUPPORTED WITH 1/2\"/>



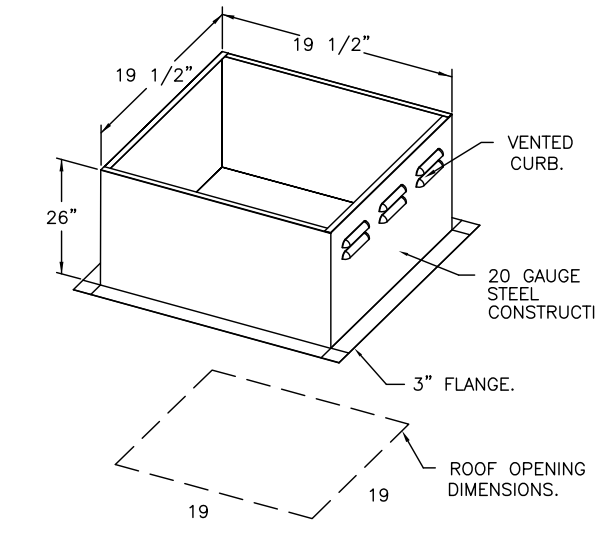
FAN #1: DUSDFEA - EXHAUST FAN



TOP VIEW

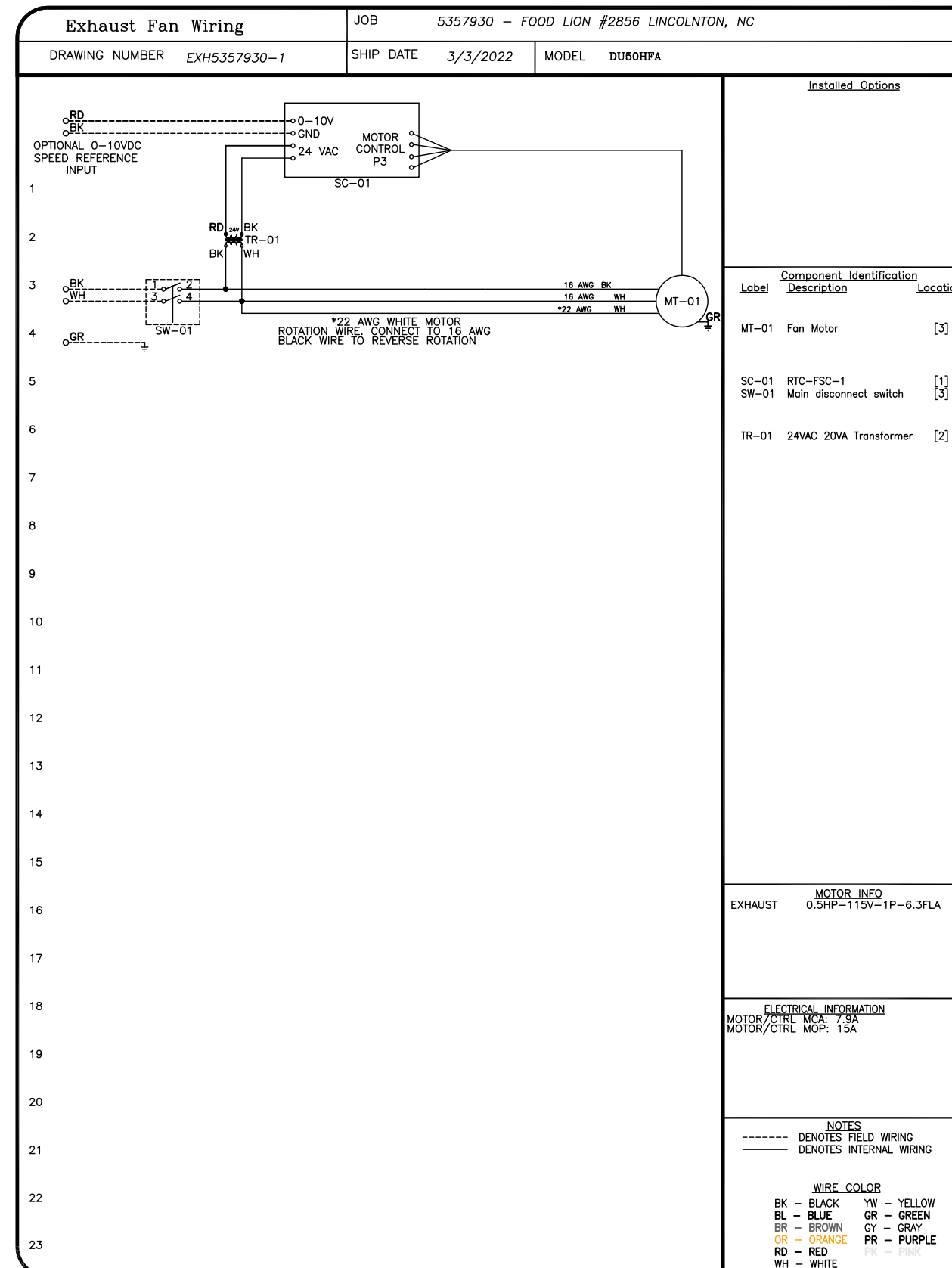
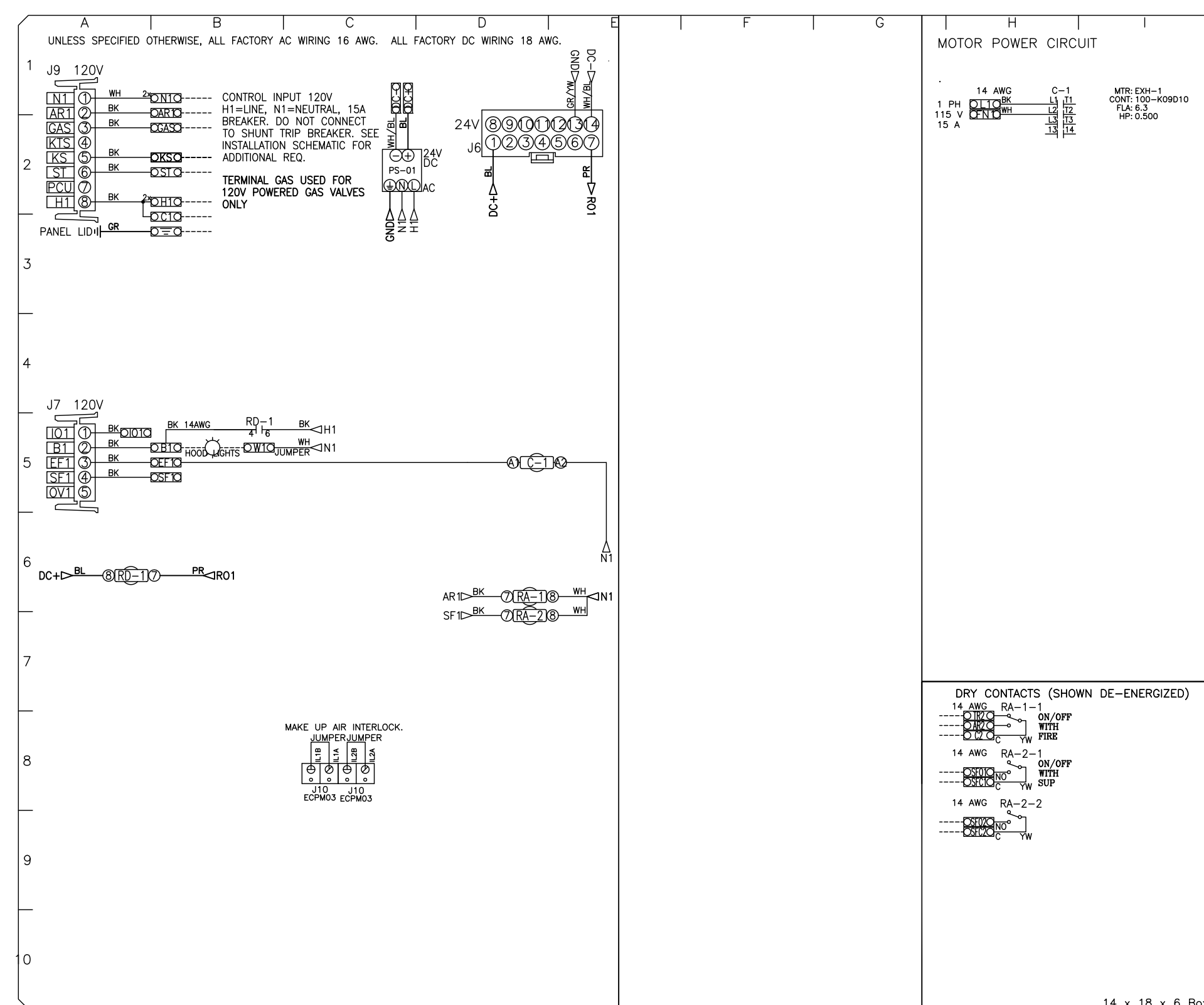
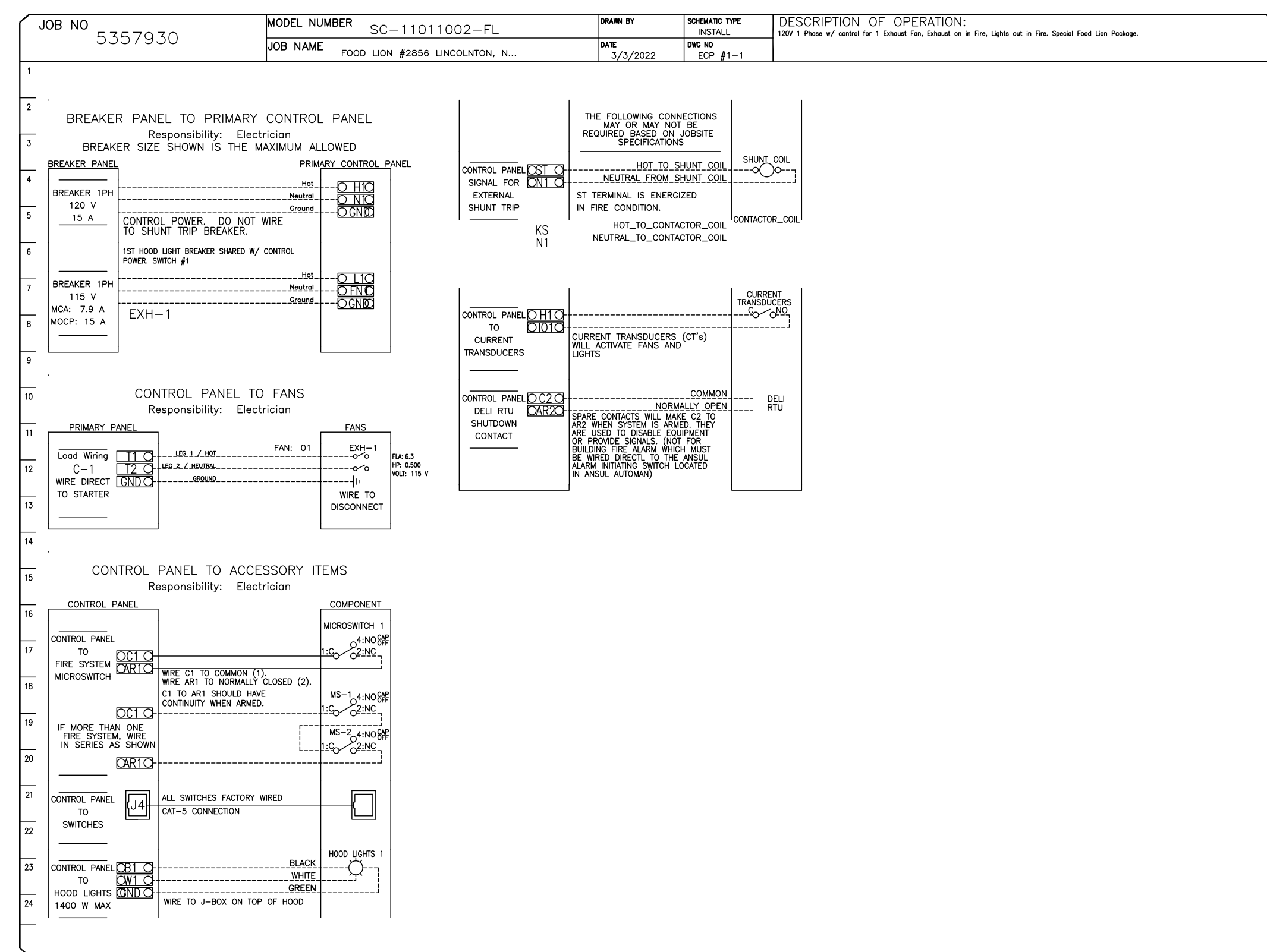
FEATURES:

- DIRECT DRIVE CONSTRUCTION (NO BELTS/PULLEYS)
- ROOF MOUNTED FANS
- RESTAURANT MODEL
- 6/30 AND 6/36 AND UEL-5845
- VARIABLE SPEED CONTROL
- INTERNAL WIRING
- THERMAL OVERLOAD PROTECTION (SINGLE PHASE)
- HIGH HEAT OPERATION SOOT (140°F)
- GREASE CLASSIFICATION TESTING
- NEMA 3B SAFETY DISCONNECT SWITCH
- NORMAL TEMPERATURE TEST
- EXHAUST FAN MUST OPERATE CONTINUOUSLY WHILE EXHAUSTING AS AT 200°F (140°F)
- THERMAL EQUILIBRIUM AND WITHOUT ANY DETERMINING EFFECTS TO THE FAN WHICH WOULD CAUSE UNSAFE OPERATION
- ANOMALOUS FLAME-UP TEST
- EXHAUST FAN MUST OPERATE CONTINUOUSLY WHILE EXHAUSTING BURNING GREASE VAPORS AT ROOF LEVEL FOR A PERIOD OF 15 MINUTES WITHOUT THE FAN BECOMING DAMAGED TO ANY EXTENT THAT COULD CAUSE AN UNSAFE CONDITION
- DETAILS
- GREASE BOX
- ECM WINDING PACKAGE - MANUAL OR 0-100% REFERENCE SPEED CONTROL (TELO MOTOR) FOR ROTATION
- 2 YEAR PARTS WARRANTY
- 1 YEAR PARTS WARRANTY



PITCHED CURBS ARE AVAILABLE FOR PITCHED ROOFS. SPECIFY PITCH. EXAMPLE: 7/12 PITCH = 30° SLOPE.

ELECTRICAL PACKAGE - JOB#5357930														
NO	TAG	PACKAGE #	LOCATION	SWITCHES	QUANTITY	OPTION	FANS CONTROLLED							
1		SC-11011002-FL	UTILITY CABINET RIGHT	04 - UTILITY CABINET RIGHT HOOD # 1	1 LIGHT	SMART CONTROLS BASIC	EXHAUST 1 15000 115 4.3							



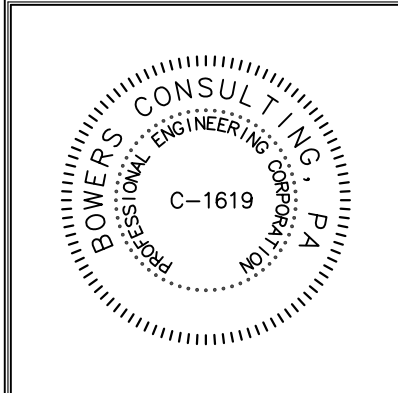
**BOWERS CONSULTING, PA**  
1620 South MLK, Jr. Avenue - Suite 106  
Salisbury, NC 28144  
T: 704-600-0075 F: 704-600-0051  
SC PE CORPORATION C-469  
GA PE CORPORATION 065974  
VA PE CORPORATION 04606434  
TN PE CORPORATION 518

DRAWING FILE NAME  
**2856 M4.02\_00**  
RFS JOB #  
**2022-004**  
DATE  
**04/29/22**  
**M4.02**  
4 OF 5

**FOOD LION 2856**  
742 NC-27  
LINCOLNTON, NC 28092  
DELI/BAKERY HOOD DETAILS



**RFS Architects**  
ARCHITECTURE + PLANNING + INTERIORS  
261 West Duke St.  
Norfolk, VA 23510  
757.627.2791



REVISIONS	No.	Description	Date

