

Report By:

National TAB
1329 E. KEMPER ROAD
SUITE 4210
CINCINNATI, OH 45246



Report: TAB REPORT
Function: Test, Adjust, & Balance
Date: 03/30/2023

PROJECT

**03-27-23 FOOD LION #2856 - LINCOLNTON,
NC**

742 W. HWY 27

LINCOLNTON, NC 28092

Client

TRS-SESCO LLC
721-A Park Centre Dr
Kernersville, NC 27284

Issue List

- EXISTING EF-3
- EXISTING RTU-1
- EXISTING RTU-1 & RTU-2 - CONDENSATE DRAIN
- NEW EF-4 & EF-2
- NEW RTU-3



Comfort. Under control.

03-27-23 FOOD LION #2856 - LINCOLNTON, NC

Project Issue Information

Issue Name : EXISTING EF-3
Description : UNIT IS NOT WIRED AND IS NOT OPERATIONAL.
Created By : National TAB **Assigned To :** National TAB - Will Turnbough
Status : Open
Priority : **Asset Tag :**
Originated Date : 03/30/2023 - Zack Epps - National TAB



Comfort. Under control.

03-27-23 FOOD LION #2856 - LINCOLNTON, NC

Project Issue Information

Issue Name : EXISTING RTU-1
Description : AIRFLOW MEASURED AT 17348 CFM ACTUAL OUT OF 26975 CFM DESIGN. RECOMMEND A MOTOR SHEAVE CHANGE. ACTUAL AMPS MEASURED AS 33 AVG AND THE MOTOR FLA IS 49.6.
Created By : National TAB **Assigned To :** National TAB - Will Turnbough
Status : Open
Priority : **Asset Tag :**
Originated Date : 03/30/2023 - Zack Epps - National TAB



Comfort. Under control.

03-27-23 FOOD LION #2856 - LINCOLNTON, NC

Project Issue Information

Issue Name :	EXISTING RTU-1 & RTU-2 - CONDENSATE DRAIN		
Description :	NO CONDENSATE DRAIN INSTALLED. RECOMMEND INSTALLING SO THAT UNIT DRAINS PROPERLY.		
Created By :	National TAB	Assigned To :	National TAB - Will Turnbough
Status :	Open		
Priority :		Asset Tag :	
Originated Date :	03/30/2023 - Zack Epps - National TAB		



Comfort. Under control.

03-27-23 FOOD LION #2856 - LINCOLNTON, NC

Project Issue Information

Issue Name : NEW EF-4 & EF-2

Description : WHILE MEASURING AMPS ON EF-4, ACCIDENTLY SHORTED THE LEAD OF THE AMP METER AND TRIPPED THE BREAKER FOR EF-4. EF-2 ALSO TURNED OFF. CONTACTED THE ELECTRICIAN AND THEY STATED THAT THEY WERE LIKELY TIED INTO THE SAME EXISTING BREAKER. NEED ASSISTANCE TURNING BREAKER BACK ON SO THAT TESTING CAN BE COMPLETED.

Created By : National TAB **Assigned To :** National TAB - Will Turnbough

Status : Open

Priority : High **Asset Tag :**

Originated Date : 03/30/2023 - Zack Epps - National TAB



Comfort. Under control.

03-27-23 FOOD LION #2856 - LINCOLNTON, NC

Project Issue Information

Issue Name : NEW RTU-3
Description : AIRFLOW MEASURED AS 586 CFM ACTUAL OUT OF 900 CFM DESIGN. MOTOR IS DIRECT DRIVE. WIRED FOR HIGH SPEED BUT AIRFLOW ONLY INCREASED 36 CFM.

Created By : National TAB **Assigned To :** National TAB - Will Turnbough

Status : Open

Priority : **Asset Tag :**

Originated Date : 03/30/2023 - Zack Epps - National TAB

CheckList List

- TECH - SITE PICTURES



Comfort. Under control.

03-27-23 FOOD LION #2856 - LINCOLNTON, NC

CheckList Information

Name : TECH - SITE PICTURES **Status :** Completed

Assigned Organization : National TAB **Asset :**

Requesting Organization : National TAB

Created Date : 03/22/2023 - Brianna Biggs - National TAB

Completed Date :

CheckList Item Details

STORE FRONT

Comment:



STOREFRONT
03/30/2023

RTU-1

Comment:



RTU-1
03/30/2023

RTU-2

Comment:



RTU_2
03/30/2023

RTU-3

Comment:



RTU-3
03/30/2023

RTU-DB

Comment:



RTU-DB
03/30/2023

EF-1

Comment:



EF-1
03/30/2023

EF-2

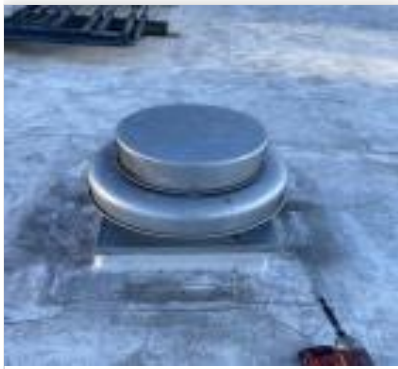
Comment:



EF-2
03/30/2023

EF-3

Comment:



EF-3
03/30/2023

EF-4

Comment:



EF-4
03/30/2023

EF-5

Comment:



EF_5
03/30/2023

EF-6

Comment:

HEF-1

Comment:



HEF-1
03/30/2023

HD-1

Comment:



HD-1
03/30/2023

National TAB

Project: 03-27-23 FOOD LION #2856 - LINCOLNTON, NC

System/Unit: AHU/RTU



Comfort. Under control.

Asset: RT-DB1

AREA:DELI/BAKERY

Unit Data		
	Design	Actual
MFG	TRANE	TRANE
Serial Num	-	223011734L
Model Num	TSC060	TSC060
Type	RTU	RTU
Configuration	VERTICAL	VERTICAL
Num OA Filters 1	-	1
OA Filter Size 1	-	16X37X1
Num Final Filter 1	-	4
Final Filter Size 1	-	16X25X2

Motor Data		
	Design	Actual
Motor MFG	-	GENTEQ
Frame	-	NL
Horsepower	1	1
Motor Rpm	-	1050
Phase	3	1
Rated Voltage	208	208
Rated Amperage	-	7.6

Drive Data		
	Design	Actual
Motor Sheave Size	-	DD
Motor Bore Size	-	DD
Motor Sheave SetPt	-	DD
Fan Sheave Size	-	DD
Fan Sheave Bore	-	DD
Belt CL Distance	-	DD
Num of Belts	-	DD
Belt Size	-	DD
Belt Alignment	-	DD

Test Data		
	Design	Actual
SF CFM	2000	2051
SF RPM	-	DD
RA CFM	1800	1829
OA CFM	200	222
RL Voltage	-	210
RL Amperage	-	6.7
SF Rotation	-	DD
RA Damper Position	-	100 OPEN
Min OA Damper Position	-	5 OPEN
Min OA Damper Type	-	ECONIMZER
OA Enthalpy Setpt	-	E

Performance Data		
	Design	Actual
MA Plenum SP	-	-0.3727
Fan Suction SP	-	-0.5972
Fan Discharge SP	-	0.3246
Total ESP	-	0.6973
Fan Total SP	-	0.9218

General		
	Design	Actual
Fan Rotation Correct	-	YES CW
Unit Filters Clean	-	YES
Condensate Drain Installed	-	YES

Completed By: Zack Epps on 03/30/2023

National TAB

Project:03-27-23 FOOD LION #2856 - LINCOLNTON, NC

AHU/RTU



Comfort. Under control.

Diffuser Supply (GRD)

RT-DB1/DELI/BAKERY

Asset									
Asset Name	Location	Type	Size	DESIGN CFM	AK	CFM(1)	CFM(2)	FINAL CFM	% to design
RT-DB1-SGRD1	DELI PREP	S4	-	500	1	60	252	521	104.2
RT-DB1-SGRD2	DELI PREP	S4	-	500	1	579	637	512	102.4
RT-DB1-SGRD3	DELI PREP	S4	-	500	1	606	674	510	102.0
RT-DB1-SGRD4	DELI PREP	S4	-	500	1	481	541	508	101.6
Total				2000		1726	2104	2051	102.55%

National TAB

Project: 03-27-23 FOOD LION #2856 - LINCOLNTON, NC

System/Unit: AHU/RTU



Comfort. Under control.

Asset: RTU1

AREA:SALES

Unit Data		
	Design	Actual
MFG	SEASONS 4	SEASONS 4
Serial Num	-	38260794255
Model Num	1SHK41-0664-ES150-27HR	1SHK41-0664-ES150-27HR
Type	RTU	RTU
Configuration	VERTICAL	VERTICAL
Num Final Filter 1	-	28
Final Filter Size 1	-	16X20X2
Num Final Filter 2	-	9
Final Filter Size 2	-	16X30X2

Test Data		
	Design	Actual
SF CFM	26975	17348
SF RPM	-	800
RA CFM	19750	13684
OA CFM	5750	3663
RL Voltage	-	210.2, 210.2, 208.3
RL Amperage	-	33.7, 33, 32.5
SF Rotation	-	CCW
Min OA Damper Type	-	MANUAL HANDLE

Motor Data		
	Design	Actual
Motor MFG	-	CROWN TRITON
Frame	-	256T
Horsepower	-	20
Motor Rpm	-	1775
Phase	3	3
Rated Voltage	208	230
Rated Amperage	-	49.6

Performance Data		
	Design	Actual
MA Plenum SP	-	-0.6861
Fan Suction SP	-	-1.8091
Fan Discharge SP	-	0.5022
Total ESP	-	1.1883
Fan Total SP	-	2.3113

Drive Data		
	Design	Actual
Motor Sheave Size	-	7.375"
Motor Bore Size	-	1.4375"
Motor Sheave SetPt	-	5 TO
Fan Sheave Size	-	15.5"
Fan Sheave Bore	-	2.375
Belt CL Distance	-	44"
Num of Belts	-	2
Belt Size	-	5VX1250
Belt Alignment	-	CORRECT

General		
	Design	Actual
Fan Rotation Correct	-	YES CCW
Unit Filters Clean	-	YES
Condensate Drain Installed	-	NO

Completed By: Zack Epps on 03/30/2023

National TAB

Project:03-27-23 FOOD LION #2856 - LINCOLNTON, NC

AHU/RTU



Comfort. Under control.

Diffuser Supply (GRD)

RTU1/SALES

Asset									
Asset Name	Location	Type	Size	DESIGN CFM	AK	CFM(1)	CFM(2)	FINAL CFM	% to design
SGRD1	CART VESTIBULE	S1	-	450	1	237	237	237	52.7
SGRD2	CART VESTIBULE	S1	-	450	1	214	214	214	47.6
SGRD3	CART VESTIBULE	S1	-	450	1	339	339	339	75.3
SGRD4	CART VESTIBULE	S1	-	450	1	244	244	244	54.2
SGRD5	CART VESTIBULE	S1	-	450	1	319	319	319	70.9
SGRD6	CART VESTIBULE	S1	-	450	1	389	389	389	86.4
SGRD7	ENTRY	S1	-	900	1	432	432	432	48.0
SGRD8	ENTRY	S1	-	900	1	646	646	646	71.8
SGRD9	ENTRY	S1	-	900	1	504	504	504	56.0
SGRD10	ENTRY	S1	-	900	1	523	523	523	58.1
SGRD11	SALES	S1	-	600	1	461	461	461	76.8
SGRD12	SALES	S1	-	900	1	577	577	577	64.1
SGRD13	SALES	S1	-	900	1	582	582	582	64.7
SGRD14	SALES	S1	-	900	1	577	577	577	64.1
SGRD15	SALES	S1	-	900	1	520	520	520	57.8
SGRD16	SALES	S1	-	900	1	712	712	712	79.1
SGRD17	ABANDONED BAKERY PREP	S1	-	300	1	274	274	274	91.3
SGRD18	ABANDONED BAKERY PREP	S1	-	300	1	294	294	294	98.0
SGRD19	ABANDONED BAKERY PREP	S1	-	300	1	95	95	95	31.7
SGRD20	ABANDONED BAKERY PREP	S1	-	125	1	85	85	85	68.0
SGRD21	SALES	S2	-	750	1	343	343	343	45.7
SGRD22	SALES	S2	-	800	1	437	437	437	54.6
SGRD23	SALES	S3	-	500	1	448	448	448	89.6
SGRD24	SALES	S3	-	500	1	405	405	405	81.0
SGRD25	SALES	S2	-	600	1	392	392	392	65.3
SGRD26	SALES	S2	-	750	1	383	383	383	51.1
SGRD27	SALES	S2	-	750	1	461	461	461	61.5
SGRD28	SALES	S2	-	600	1	444	444	444	74.0
SGRD29	SALES	S3	-	500	1	399	399	399	79.8
SGRD30	SALES	S3	-	500	1	432	432	432	86.4
SGRD31	SALES	S2	-	600	1	191	191	191	31.8
SGRD32	SALES	S2	-	750	1	386	386	386	51.5
SGRD33	SALES	S2	-	750	1	418	418	418	55.7
SGRD34	SALES	S2	-	600	1	386	386	386	64.3
SGRD35	SALES	S3	-	500	1	398	398	398	79.6
SGRD36	SALES	S2	-	600	1	402	402	402	67.0
SGRD37	SALES	S2	-	600	1	369	369	369	61.5
SGRD38	SALES	S2	-	600	1	331	331	331	55.2
SGRD39	SALES	S2	-	600	1	425	425	425	70.8
SGRD40	WOMESN RR	S1	-	200	1	70	70	70	35.0
SGRD41	MENS RR	S1	-	100	1	77	77	77	77.0
SGRD42	MEAT PREP	S1	-	100	1	89	89	89	89.0
SGRD43	BAKERY PREP	S1	-	100	1	77	77	77	77.0
SGRD44	BAKERY PREP	S1	-	100	1	113	113	113	113.0
SGRD45	GROCERY STAGING	S1	-	400	1	224	225	225	56.3
SGRD46	GROCERY STAGING	S1	-	400	1	448	448	448	112.0
SGRD47	GROCERY STAGING	S1	-	400	1	185	185	185	46.3
SGRD48	GROCERY STAGING	S1	-	200	1	329	329	329	164.5
SGRD49	GROCERY STAGING	S1	-	200	1	-	-	-	-
SGRD50	PRODUCE PREP	S1	-	250	1	133	133	133	53.2
SGRD51	PRODUCE PREP	S1	-	250	1	128	128	128	51.2
Total				26975		17347	17348	17348	64.31%

National TAB

Project: 03-27-23 FOOD LION #2856 - LINCOLNTON, NC

System/Unit: AHU/RTU



Comfort. Under control.

Asset: RTU2

AREA: LOUNGE/OFFICES

Unit Data		
	Design	Actual
MFG	ICP	ICP
Serial Num	-	C152410984
Model Num	PHD4240	PHD4240
Type	RTU	RTU
Configuration	VERTICAL	VERTICAL
Num OA Filters 1	-	1
OA Filter Size 1	-	7.5X7.25
Num Final Filter 1	-	1
Final Filter Size 1	-	20X30

Motor Data		
	Design	Actual
Motor MFG	-	NL
Frame	-	NL
Horsepower	-	0.5
Motor Rpm	-	NA
Phase	3	1
Rated Voltage	208	208
Rated Amperage	-	4.1

Drive Data		
	Design	Actual
Motor Sheave Size	-	DD
Motor Bore Size	-	DD
Motor Sheave SetPt	-	DD
Fan Sheave Size	-	DD
Fan Sheave Bore	-	DD
Belt CL Distance	-	DD
Num of Belts	-	DD
Belt Size	-	DD
Belt Alignment	-	DD

Test Data		
	Design	Actual
SF CFM	900	843
SF RPM	-	-
RA CFM	800	774
OA CFM	100	126
RL Voltage	-	123.4
RL Amperage	-	1.3
SF Rotation	-	CCW
RA Damper Position	-	100
Min OA Damper Position	-	2/3 OPEN
Min OA Damper Type	-	MANUAL PLATE

Performance Data		
	Design	Actual
MA Plenum SP	-	-0.0905
Fan Suction SP	-	-0.2757
Fan Discharge SP	-	0.2053
Total ESP	-	0.2958
Fan Total SP	-	0.481

General		
	Design	Actual
Fan Rotation Correct	-	YES
Unit Filters Clean	-	YES
Condensate Drain Installed	-	YES

Completed By: Zack Epps on 03/30/2023

National TAB

Project:03-27-23 FOOD LION #2856 - LINCOLNTON, NC

AHU/RTU



Comfort. Under control.

Diffuser Supply (GRD)

RTU2/LOUNGE/OFFICES

Asset									
Asset Name	Location	Type	Size	DESIGN CFM	AK	CFM(1)	CFM(2)	FINAL CFM	% to design
SGRD1	LOUNGE	S1	-	400	1	201	268	268	67.0
SGRD2	STORAGE OFFICE	S1	-	200	1	237	315	315	157.5
SGRD3	DEPT MANAGERS OFFICE	S1	-	300	1	210	260	260	86.7
SGRD4	DEPT MANAGERS OFFICE	S1		0	1	0	0	0	-
Total				900		648	843	843	93.67%

National TAB

Project: 03-27-23 FOOD LION #2856 - LINCOLNTON, NC

System/Unit: AHU/RTU



Comfort. Under control.

Asset: RTU3

AREA:FRONT OFFICES

Unit Data		
	Design	Actual
MFG	TRANE	TRANE
Serial Num	-	222015234L
Model Num	4TTC4030	4TTC4030
Type	RTU	RTU
Configuration	VERTICAL	VERTICAL
Num Final Filter 1	-	1
Final Filter Size 1	-	20X25

Motor Data		
	Design	Actual
Motor MFG	-	NA
Frame	-	NA
Horsepower	0.5	NA
Motor Rpm	-	NA
Phase	3	NA
Rated Voltage	208	NA
Rated Amperage	-	NA

Drive Data		
	Design	Actual
Motor Sheave Size	-	DD
Motor Bore Size	-	DD
Motor Sheave SetPt	-	DD
Fan Sheave Size	-	DD
Fan Sheave Bore	-	DD
Belt CL Distance	-	DD
Num of Belts	-	DD
Belt Size	-	DD
Belt Alignment	-	DD

Test Data		
	Design	Actual
SF CFM	900	586
SF RPM	-	DD
RA CFM	900	586
RL Voltage	-	123.4
RL Amperage	-	1.7
SF Rotation	-	CCW
RA Damper Position	-	100 OPEN

Performance Data		
	Design	Actual
MA Plenum SP	-	-0.2135
Fan Suction SP	-	-0.5039
Fan Discharge SP	-	0.1661
Total ESP	0.60"	0.3796
Fan Total SP	-	0.67

General		
	Design	Actual
Fan Rotation Correct	-	
Unit Filters Clean	-	
Condensate Drain Installed	-	

Completed By: Zack Epps on 03/30/2023

Notes:

NO OA HOOD, IT IS ALL RETURN.

UNIT IS WIRED FOR HIGH SPEED AND IS STILL LOW ON FLOW: 586 CFM ACTUAL / 800 CFM DESIGN

Written By: on

National TAB

Project:03-27-23 FOOD LION #2856 - LINCOLNTON, NC

AHU/RTU



Comfort. Under control.

Diffuser Supply (GRD)

RTU3/FRONT OFFICES

Asset									
Asset Name	Location	Type	Size	DESIGN CFM	AK	CFM(1)	CFM(2)	FINAL CFM	% to design
RTU3-SGRD1	ABANDONES PHARMACY	S1	-	200	1	128	136	136	68.0
RTU3-SGRD2	ABANDONES PHARMACY	S1	-	200	1	0	136	136	68.0
RTU3-SGRD3	STORE MANAGERS OFFICE	S1	-	150	1	0	124	124	82.7
RTU3-SGRD4	STORE MANAGERS OFFICE	S1	-	300	1	181	190	190	63.3
Total				850		309	586	586	68.94%

National TAB

Project: 03-27-23 FOOD LION #2856 - LINCOLNTON, NC

System/Unit: FAN - Exhaust



Comfort. Under control.

Asset: EF1

AREA:MECHANICAL ROOM

Unit Data		
	Design	Actual
MFG	NA	NA
Model Num	NA	NA
Serial Num	-	X05XX0890448F
Type	-	UPBLAST
Configuration	-	VERTICAL

Motor Data		
	Design	Actual
Motor MFG	-	US MOTORS
Frame	-	184T
Horsepower	-	1.5
Motor Rpm	-	870
Phase	-	3
Voltage (rated)	-	208
Amperage (rated)	-	7.0
Service Factor	-	1.15

Drive Data		
	Design	Actual
Motor Sheave Size	-	DD
Motor Bore Size	-	DD
Motor Sheave SetPt	-	DD
Fan Sheave Size	-	DD
Fan Sheave Bore	-	DD
Belt CL Distance	-	DD
Num of Belts	-	DD
Belt Size	-	DD

Test Data		
	Design	Actual
CFM	-	-
Fan RPM	-	-
Fan Rotation	-	-
Motor RPM	-	-
RL Voltage	-	-
RL Amperage	-	-
Suction ESP	-	-
Discharge ESP	-	-
Total ESP	-	-

Completed By: Zack Epps on 03/30/2023

National TAB

Project: 03-27-23 FOOD LION #2856 - LINCOLNTON, NC

System/Unit: FAN - Exhaust



Comfort. Under control.

Asset: EF2

AREA:RESTROOMS

Unit Data		
	Design	Actual
MFG	COOK	COOK
Model Num	100C17DEC	100C17DEC
Serial Num	-	296SK1166300/0000701
Type	DOWNBLAST	DOWNBLAST
Configuration	HORIZONTAL	VERTICAL

Motor Data		
	Design	Actual
Motor MFG	-	COOK
Frame	-	NL
Horsepower	0.25	0.25
Motor Rpm	-	1725
Phase	1	1
Voltage (rated)	120	120
Amperage (rated)	-	3.4
Service Factor	-	1

Test Data		
	Design	Actual
CFM	675	-
Fan RPM	1664	DD
Fan Rotation	-	CCW
Motor RPM	-	DD
System SetPt	-	DIAL
RL Voltage	-	NA
RL Amperage	-	NA
Total ESP	0.375"	NA
Fan Inlet SP	-	NA
Fan Discharge SP	-	NA

National TAB

Project: 03-27-23 FOOD LION #2856 - LINCOLNTON, NC

System/Unit: FAN - Exhaust



Comfort. Under control.

Asset: EF3

AREA:SEAFOOD PREP

Unit Data		
	Design	Actual
MFG	NA	NA
Model Num	NA	NA
Serial Num	-	NA
Type	-	DOWNBLAST
Configuration	-	VERTICAL

Motor Data		
	Design	Actual
Motor MFG	-	FASCO
Frame	-	NL
Horsepower	-	0.125
Motor Rpm	-	1550
Phase	-	1
Voltage (rated)	-	115
Amperage (rated)	-	1.9
Service Factor	-	1

Test Data		
	Design	Actual
CFM	675	-
Fan RPM	-	DD
Fan Rotation	-	DD
Motor RPM	-	DD
System SetPt	-	-
RL Voltage	-	-
RL Amperage	-	-
Total ESP	-	-
Fan Inlet SP	-	-
Fan Discharge SP	-	-

Completed By: Zack Epps on 03/30/2023

National TAB

Project: 03-27-23 FOOD LION #2856 - LINCOLNTON, NC

System/Unit: FAN - Exhaust



Comfort. Under control.

Asset: EF4

AREA: JANITOR AREA

Unit Data		
	Design	Actual
MFG	COOK	COOK
Model Num	90C17DEC	90C17DEC
Serial Num	-	296SK11663-00/0002001
Type	DOWNBLAST	DOWNBLAST
Configuration	VERTICAL	VERTICAL

Motor Data		
	Design	Actual
Motor MFG	-	COOK
Frame	-	NL
Horsepower	0.167	0.167
Motor Rpm	-	1725
Phase	1	1
Voltage (rated)	120	120
Amperage (rated)	-	2.36
Service Factor	-	1

Test Data		
	Design	Actual
CFM	200	191
Fan RPM	1243	DD
Fan Rotation	-	DD
Motor RPM	-	DD
System SetPt	-	DIAL
RL Voltage	-	123
RL Amperage	-	NA
Total ESP	0.375"	-
Fan Inlet SP	-	-
Fan Discharge SP	-	-

National TAB

Project: 03-27-23 FOOD LION #2856 - LINCOLNTON, NC

System/Unit: FAN - Exhaust



Comfort. Under control.

Asset: EF5

AREA:

Unit Data		
	Design	Actual
MFG	COOK	COOK
Model Num	100C17DEC	100C17DEC
Serial Num	-	296SK11663-00/0003301
Type	DOWNBLAST	DOWNBLAST
Configuration	VERTICAL	VERTICAL

Motor Data		
	Design	Actual
Motor MFG	-	COOK
Frame	-	NL
Horsepower	0.25	0.25
Motor Rpm	-	1725
Phase	1	1
Voltage (rated)	120	120
Amperage (rated)	-	3.4
Service Factor	-	1

Test Data		
	Design	Actual
CFM	300	305
Fan RPM	1205	DD
Fan Rotation	-	DD
Motor RPM	-	DD
System SetPt	-	DIAL
RL Voltage	-	123
RL Amperage	-	NA
Total ESP	0.375"	0.1661
Fan Inlet SP	-	0.1661
Fan Discharge SP	-	ATM

Completed By: Zack Epps on 03/30/2023

National TAB

Project: 03-27-23 FOOD LION #2856 - LINCOLNTON, NC

System/Unit: FAN - Exhaust



Comfort. Under control.

Asset: HEF1

AREA:RACK OVEN

Unit Data		
	Design	Actual
MFG	COOK	COOK
Model Num	VCRD150	VCRD150
Serial Num	-	296S192354-00/0000701
Type	UPBLAST	UPBLAST
Configuration	VERTICAL	VERTICAL

Motor Data		
	Design	Actual
Motor MFG	-	GENTEQ
Frame	-	NL
Horsepower	0.334	0.334
Motor Rpm	-	1550
Phase	1	1
Voltage (rated)	120	115
Amperage (rated)	-	4.5
Service Factor	-	1

Test Data		
	Design	Actual
CFM	750	657
Fan RPM	1260	DD
Fan Rotation	-	DD
Motor RPM	-	DD
System SetPt	-	MAX
RL Voltage	-	123.2
RL Amperage	-	3.4
Total ESP	0.75"	NA
Fan Inlet SP	-	NA
Fan Discharge SP	-	ATM

Completed By: Zack Epps on 03/30/2023

National TAB

Project: 03-27-23 FOOD LION #2856 - LINCOLNTON, NC

System/Unit: FAN - Exhaust



Comfort. Under control.

Asset: HEF2

AREA:

Unit Data		
	Design	Actual
MFG	CAPTIVEAIRE	CAPTIVEAIRE
Model Num	DU50HFA	DU50HFA
Serial Num	-	5357930
Type	UPBLAST	UPBLAST
Configuration	VERTICAL	VERTICAL

Motor Data		
	Design	Actual
Motor MFG	-	TELCO GREEN
Frame	-	NL
Horsepower	0.50	0.50
Motor Rpm	-	1800
Phase	1	1
Voltage (rated)	115	115
Amperage (rated)	-	3.91
Service Factor	-	1

Test Data		
	Design	Actual
CFM	1155	1244
Fan RPM	1280	473
Fan Rotation	-	DD
Motor RPM	-	473
System SetPt	-	40P
RL Voltage	-	124
RL Amperage	-	2.8
Total ESP	0.50"	0.5684
Fan Inlet SP	-	-0.5684
Fan Discharge SP	-	ATM

Completed By: Zack Epps on 03/30/2023

National TAB

Project: 03-27-23 FOOD LION #2856 - LINCOLNTON, NC

System/Unit: Kitchen Hood Type I



Comfort. Under control.

Asset: HD1

AREA:

Unit Data		
	Design	Actual
MFG	LBC	LBC
Model Num	NA	LRO-1E5
Job / Serial Num	-	S76592
Type	-	TYPE
Hood length	-	34.5"
Hood Width	-	46.5"

Test Data Exhaust		
	Design	Actual
Filter Type	-	BAFFLED
Filter Size 1	-	16X16
Filter Qty 1	-	2
Filter AK factor size 1	-	1.62
Filter Total AK Area	-	3.24
Filter1 FPM	-	214
Filter2 FPM	-	192
Filter Ave FPM(corr)	-	203
CFM	750	657

Cooking Equipment		
	Design	Actual
Item 1	-	RACK OVEN

Completed By: Zack Epps on 03/29/2023

Notes:
UNIT AT MAX SETPOINT ON DIAL

Written By: on

National TAB

Project: 03-27-23 FOOD LION #2856 - LINCOLNTON, NC

System/Unit: Kitchen Hood Type I



Asset: HD2

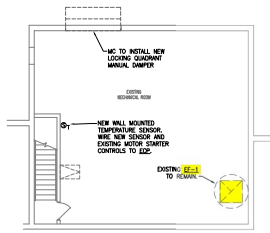
AREA:

Unit Data		
	Design	Actual
MFG	CAPTIVEAIRE	CAPTIVEAIRE
Model Num	V-ND-2	V-ND-2
Job / Serial Num	-	5357930
Type	TYPE I CANOPY	TYPE I CANOPY
Hood length	132	132"
Hood Width	54	54"

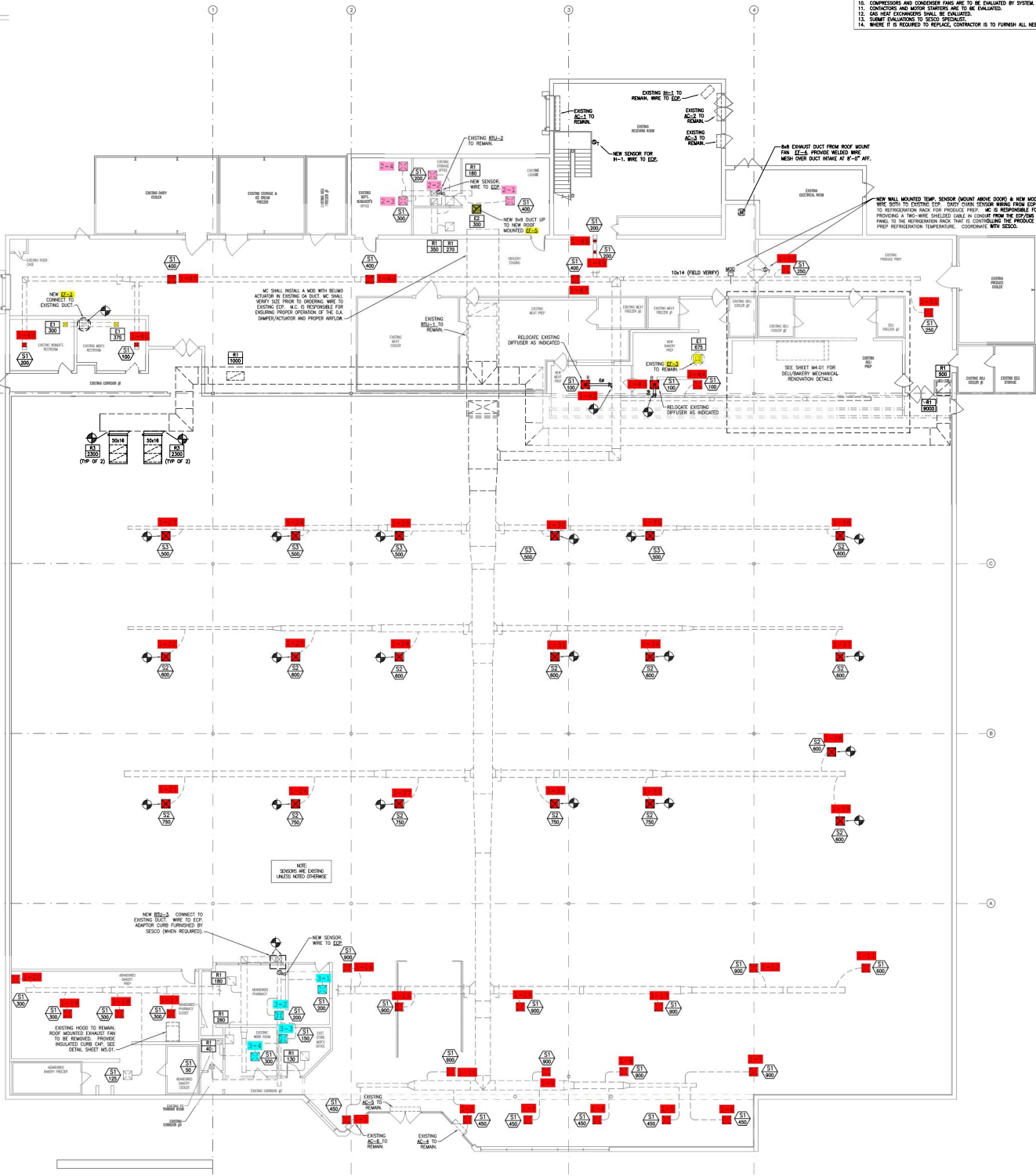
Test Data Exhaust		
	Design	Actual
Filter Type	BAFFLE	BAFFLE
Filter Size 1	16X16	16x16
Filter Qty 1	8	8
Filter AK factor size 1	1.62	1.62
Filter Total AK Area	12.96	12.96
Filter1 FPM	-	80
Filter2 FPM	-	81
Filter3 FPM	-	97
Filter4 FPM	-	118
Filter5 FPM	-	104
Filter6 FPM	-	95
Filter7 FPM	-	97
Filter8 FPM	-	96
Filter Ave FPM(corr)	-	96
CFM	1155	1244

Cooking Equipment		
	Design	Actual
Item 1	-	FRYER
Item 2	-	ROTISSERIE OVEN

Completed By: Zack Epps on 03/29/2023



- NOTE
1. REPLACE ALL SECTION AND LIQUID LINE FILTERS AS AT THE START OF THE PROJECT. LEAVE AND FILTERS IN THE CLEAN ROOM FOR SECOND INSPECTION.
 2. ALL COILS TO BE INSPECTED COMPLETELY.
 3. REPLACE BELTS FOR SUPPLY FAN.
 4. REPLACE ALL DOOR Gaskets.
 5. RE-SEAL ALL EXISTING GASKETS WITH ALUMINUM SILICONE.
 6. REPLACE ALL H.V. OR M.V. OR P.V. PRESSURE CONTROLS AND ANY ASSOCIATED HOSE CONNECTIONS.
 7. SYSTEM REFINEMENT CHANGE IS TO BE EVALUATED.
 8. REPLACE ANY AND ALL PIPES AS NEEDED.
 9. REPLACE ANY MOUNT WIRING AS NEEDED.
 10. COMPRESSORS AND CONDENSER PIPES ARE TO BE EVALUATED BY SYSTEM.
 11. CONDENSERS AND MOTOR SHIPPERS ARE TO BE EVALUATED.
 12. GAS LEAK EXCHANGERS SHALL BE EVALUATED.
 13. SUBMIT EVALUATIONS TO SESO SPECIALIST.
 14. WHERE IT IS REQUIRED TO REPLACE CONDENSER IS TO FURNISH ALL NEEDED PARTS.



1 MECHANICAL FLOOR PLAN
M1.01 SCALE: 3/32" = 1'-0"

