

# CONSTRUCTION BULLETIN



**C.B. #**  
  
**02**

Issued By: Julia Hoban, Red Architecture

Project: Walnut Hills – Store 4870 – CMG1144

Issued on: 07/15/2024 Regarding Construction Documents dated: 05/08/2024

Issued to:

*DM: John Myers – Chipotle Mexican Grill*  
*CM: Jay Mauger – Chipotle Mexican Grill*  
*DC: Heather Conley – Chipotle Mexican Grill*  
*GC: Nicole Sherry – Derek Inc.*

**NOTICE**

The following list of items represent revisions and/or corrections to the Construction Documents bearing the date listed above. If the Contractor feels that any item causes a change to the requirements of the Contract Documents, the Contractor shall immediately give written notice to the Owner and Architect.

<b>#1</b>	Revision	<b>X</b>	Per Direction of: <b>Owner</b>
	Correction		
<p><i>Kitchen equipment was relocated per request of design team. The carving station was relocated next to the cookline and an additional stainless table was added to the prep area. The timeclock has been relocated to the side of the MOPUS wall, and the chip shelf has been relocated behind the MOPUS. Electrical plans have been updated for new equipment locations. Sheets affected and clouded as revision #4: G000, G001, A101a, A101b, A110, A120, A130, A131, A701, A702, E100, E110, E600</i></p> <p><i>Site plan and elevations were also updated to match revisions to the shell building site lighting and electrical drawings. Sheets affected and clouded as revision #4: SP100, A301, E710</i></p>			



**BUILDING CODE & ZONING DATA**

- OCCUPANCY GROUP: A-2  
OCCUPANCY SEPARATION REQUIRED: N/A  
OCCUPANCY SEPARATION PROVIDED: N/A
- TYPE OF CONSTRUCTION: V-B
- USE GROUP: A-2  
ALLOWABLE AREA: 6,000 S.F.  
AREA INCREASE W/ SPRINKLERS: N/A  
ACTUAL AREA: 2,384 S.F.  
TENANT LEASE AREA: 2,384 S.F.
- ALLOWABLE NO. OF STORIES: 1  
ACTUAL NO. OF STORIES: 1  
ALLOWABLE BUILDING HEIGHT: 40'-0" MAXIMUM HEIGHT  
ACTUAL BUILDING HEIGHT: 20'-8"
- CALCULATED OCCUPANT LOAD  
DINING ROOM AND CIRCULATION 726 SF / 15 SF = 49  
KITCHEN-COMMERCIAL 1034 SF / 200 SF = 6  
RESTROOMS AND CIRCULATION 156 SF / 100 SF = 2

TOTAL OCCUPANT LOAD TO BE POSTED: 99 OCC. (MAX OCCUPANCY)  
THE CALCULATED OCCUPANT LOAD IS LESS THAN THE PROPOSED POSTED OCCUPANT LOAD. ALL LIFE SAFETY AND RESTROOM CALCULATIONS ARE BASED ON THE POSTED OCCUPANT LOAD.

SEATING:  
INTERIOR: 42 SEATS  
PATIO: 18 SEATS  
TOTAL: 60 SEATS

- MEANS OF EGRESS REQUIRED: 2  
MEANS OF EGRESS PROVIDED: 3

- FIRE SPRINKLERS: NONE

PLUMBING FIXTURES		LAVORATORIES		URINALS	
REQ'D	PROV'D	REQ'D	PROV'D	REQ'D	PROV'D
MEN'S: 1	1	1	1	0	0
WOMEN'S: 1	1	1	1	0	0

NOTE: RESTROOMS SHOWN AS UNISEX WITH TOTAL FIXTURE COUNTS MET.

**CODE AUTHORITIES**

BUILDING CODE:	2017 OHIO BUILDING CODE
EXISTING BUILDING CODE:	2017 OHIO EXISTING BUILDING CODE
MECHANICAL CODE:	2017 OHIO MECHANICAL CODE
PLUMBING CODE:	2017 OHIO PLUMBING CODE
ENERGY CODE:	2017 OHIO ENERGY CODE
FUEL GAS CODE:	2015 INTERNATIONAL FUEL GAS CODE
ELECTRICAL CODE:	2017 OHIO ELECTRIC CODE
FIRE CODE:	2017 OHIO FIRE CODE WITH LOCAL AMENDMENTS
ACCESSIBILITY:	2009 ANSI 117.1
FOOD/RESTAURANT CODE:	OHIO UNIFORM FOOD SAFETY CODE 3717-1

**EGRESS SEPARATION NOTE**

- OVERALL DISTANCE: 66'-1"  
REQUIRED SEPARATION: 33'-1/2" (NON-SPRINKLERED)  
PROVIDED SEPARATION: 48'-9"

**GENERAL NOTES PER IBC 2018**

- 44" REQUIRED EGRESS CORRIDOR WIDTH FOR OCCUPANCIES 50+.  
42" REQUIRED EGRESS AISLE WIDTH FOR OCCUPANCIES 50 AND OVER.  
36" REQUIRED EGRESS WIDTH FOR OCCUPANCIES UNDER 50.  
SECT. 1029.9.1(4)
- NO DEAD END CORRIDORS OVER 20'-0"  
SECT. 1020.4
- MAXIMUM EGRESS TRAVEL DISTANCE TO AN EXIT IS 75'-0". MEASURED AS MOST REMOTE POINT ALONG THE NATURAL AND UNOBSTRUCTED PATH OF HORIZONTAL AND VERTICAL TRAVEL TO THE EXIT.  
TABLE 1006.2.1
- DISTANCE BETWEEN TWO POINTS OF EGRESS (MEASURED IN A STRAIGHT LINE BETWEEN THE TWO) SHALL NOT BE LESS THAN 1/2 DIAGONAL OF SPACE BEING SERVED FOR EGRESS PATH.  
SECT. 1007.1.1
- IF FULLY SPRINKLERED DISTANCE BETWEEN TWO POINTS OF EGRESS CAN GO DOWN TO 1/3 OF DIAGONAL.
- MAXIMUM EXIT ACCESS TRAVEL DISTANCE 200' W/OUT SPRINKLER, 250' W/ SPRINKLER.  
TABLE 1017.2
- MINIMUM DISTANCE BETWEEN SEATS IS 12" FOR A DISTANCE OF 12'-0" WITH AN ADDITIONAL 1/2" OF WIDTH FOR EACH 1'-0" OR FRACTION THEREOF BEYOND ORIGINAL 12'-0".  
SECT. 1029.13.1.1
- EGRESS ALONG SEATING IS MEASURED 19" FROM EDGE OF TABLE WHERE MOVEABLE CHAIRS ARE USED, OR FROM THE EDGE OF A FIXED SEAT.  
SECT. 1029.13.1
- DOORS IN FULLY OPEN POSITION SHALL NOT REDUCE A REQUIRED DIMENSION BY MORE THAN 7 INCHES. LANDINGS SHALL HAVE A LENGTH MEASURED IN THE DIRECTION OF TRAVEL OF NOT LESS THAN 44 INCHES.  
SECTION 1010.1.6
- DOORS, WHEN FULLY OPENED SHALL NOT REDUCE THE REQUIRED MEANS OF EGRESS WIDTH BY MORE THAN 7 INCHES. DOORS IN ANY POSITION SHALL NOT REDUCE THE REQUIRED WIDTH BY MORE THAN ONE-HALF.  
SECT. 1005.7.1
- SPACE BETWEEN TWO DOORS IN A SERIES SHALL BE 48 INCHES MIN. PLUS WIDTH OF A DOOR SWINGING INTO SPACE. DOORS IN A SERIES SHALL SWING EITHER IN THE SAME DIRECTION OR AWAY FROM THE SPACE BETWEEN THE DOOR.  
SECT. 1010.1.8



FOR CONSTRUCTION

COPYRIGHT 2023  
THIS DRAWING IS AN INSTRUMENT OF SERVICE AND AS SUCH REMAINS THE PROPERTY OF CHIPOTLE MEXICAN GRILL, INC. PERMISSION FOR USE OF THIS DOCUMENT IS LIMITED AND CAN BE EXTENDED ONLY BY WRITTEN AGREEMENT WITH CHIPOTLE MEXICAN GRILL, INC.



CHIPOTLE MEXICAN GRILL, INC.  
PO BOX 182566  
COLUMBUS, OH 43218-2566  
TELEPHONE: 614.318.2400  
INTERNET: WWW.CHIPOTLE.COM

STORE NO.: 4870  
WALNUT HILLS  
1202 E MCMILLAN STREET  
CINCINNATI, OH 45206

Issue Record:	
11/03/23	PERMIT SET
05/08/24	CONSTRUCTION SET

Revisions:	
1	1/24/24 HEALTH COMMENTS
4	6/28/24 KITCHEN UPDATE

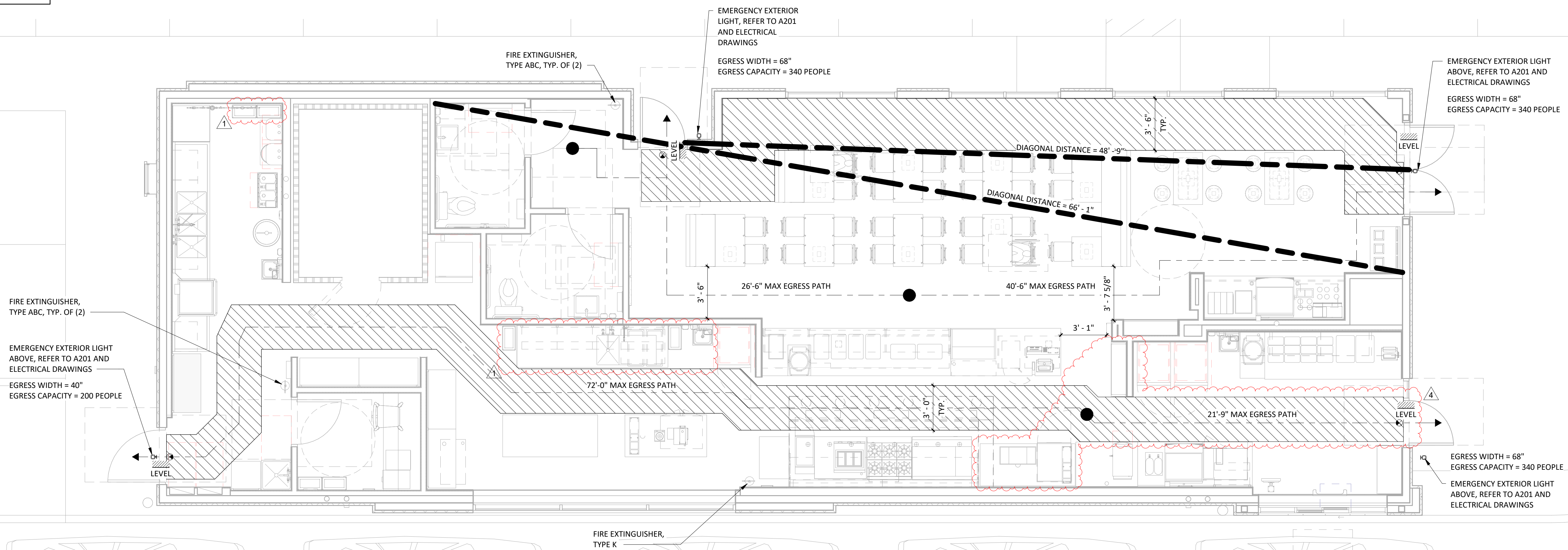
Drawn:	Checked:
JTH, PH	TC

Project No.  
CMG1144

Contents:

PROJECT DATA & LIFE SAFETY PLAN

G001



# GENERAL NOTES

1. STENCILS FOR PARKING MARKINGS AVAILABLE FROM PAVEMENT STENCIL COMPANY, PHONE: (800) 250-5547, EMAIL: STENCILS@PAVEMENTSTENCIL.COM
2. ALL SITE WORK INCLUDING PAVING, CURBING, PARKING, PARKING LOT LIGHTING, SIDEWALKS, LANDSCAPING AND DUMPSTER ENCLOSURE ARE EXISTING U.N.O.

FOR  
 CONSTRUCTION

COPYRIGHT 2023  
 THIS DRAWING IS AN INSTRUMENT OF SERVICE  
 AND AS SUCH REMAINS THE PROPERTY OF  
 CHIPOTLE MEXICAN GRILL, INC.. PERMISSION FOR  
 USE OF THIS DOCUMENT IS LIMITED AND CAN BE  
 EXTENDED ONLY BY WRITTEN AGREEMENT WITH  
 CHIPOTLE MEXICAN GRILL, INC..



CHIPOTLE MEXICAN GRILL, INC.  
 PO BOX 182566  
 COLUMBUS, OH 43218-2566  
 TELEPHONE: 614.318.2400  
 INTERNET: WWW.CHIPOTLE.COM

STORE NO.: 4870  
 WALNUT HILLS  
 1202 E MCMILLAN STREET  
 CINCINNATI, OH 45206

Issue Record:

11/03/23	PERMIT SET
05/08/24	CONSTRUCTION SET

Revisions:

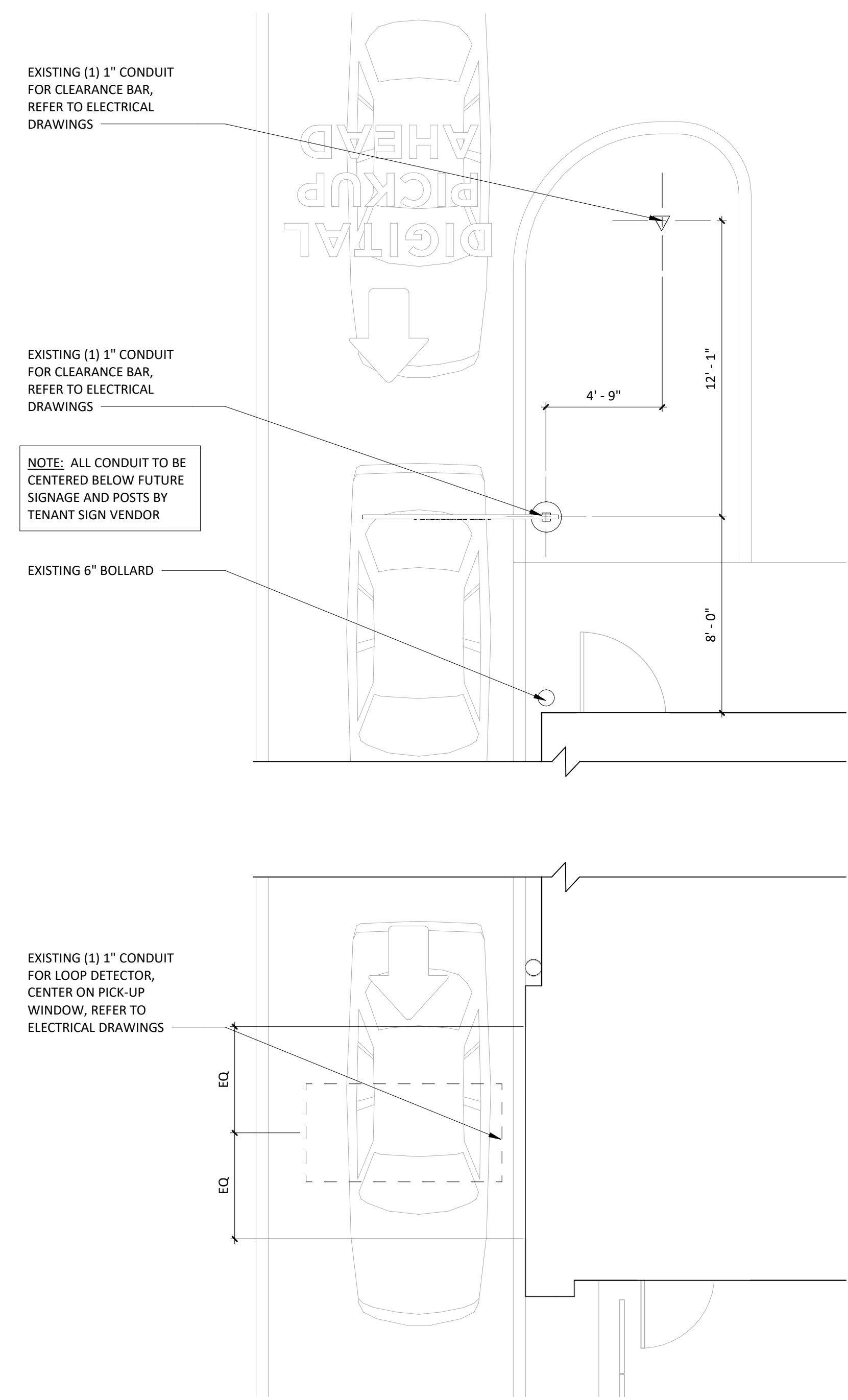
4	6/28/24	KITCHEN UPDATE
---	---------	----------------

Drawn: JTH, PH  
 Checked: TC

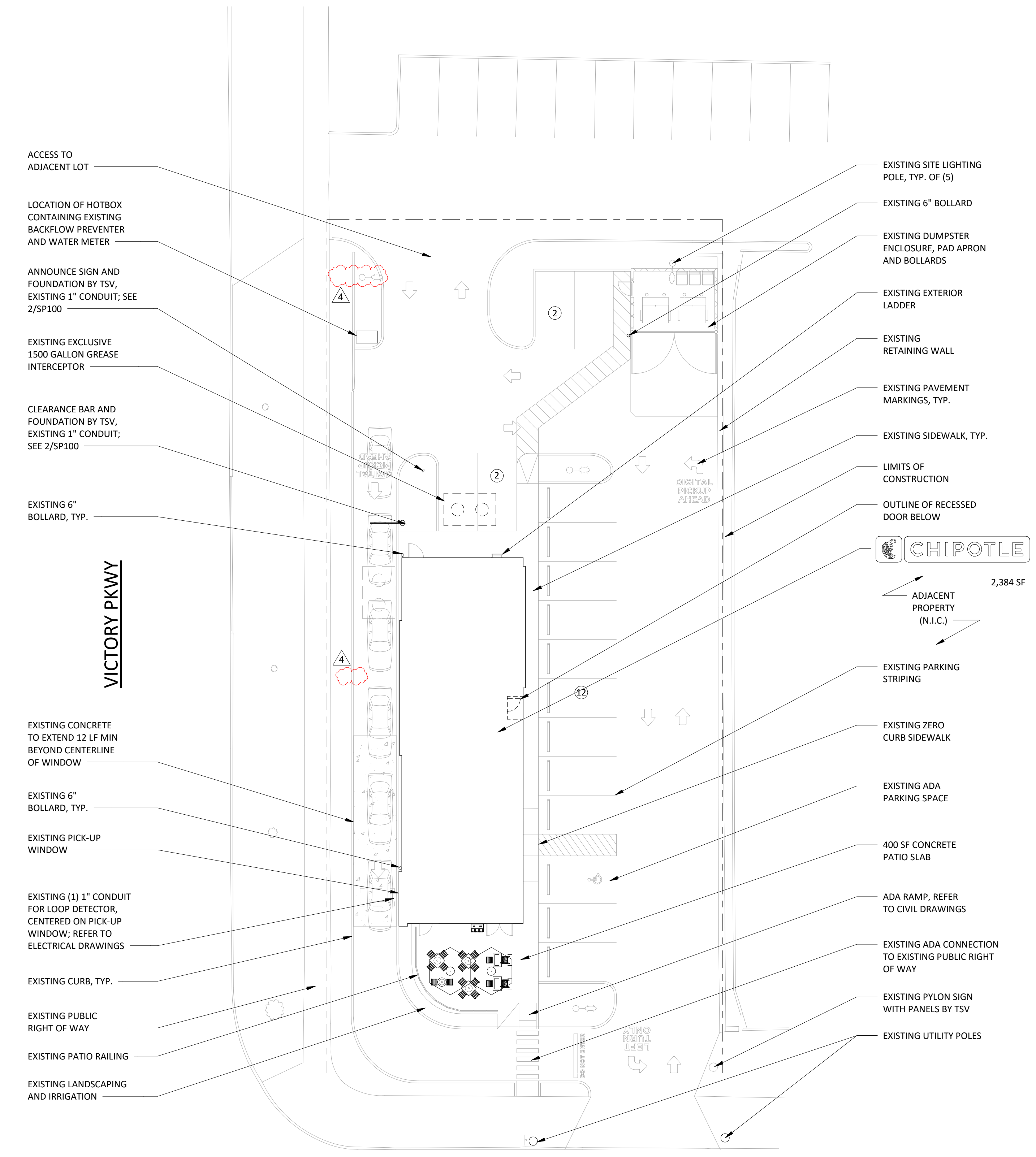
Project No.  
 CMG1144

Contents:  
 ARCHITECTURAL SITE  
 PLAN

SP100



**ARCHITECTURAL SITE PLAN DIMENSIONED**  
 1/4" = 1'-0"



**ARCHITECTURAL SITE PLAN**  
 1/16" = 1'-0"

## PLUMBING LEGEND

	FLOOR SINK
	FLOOR DRAIN
	TRENCH DRAIN

## GENERAL NOTES

1. VERIFY OVERALL INTERIOR DIMENSIONS, INTERIOR COLUMN PLACEMENTS, AND EXTERIOR WALL PENETRATIONS IN FIELD AND NOTIFY ARCHITECT OF ANY DISCREPANCIES PRIOR TO COMMENCEMENT OF CONSTRUCTION.
2. ALL DIMENSIONS ARE TO THE INSIDE FACE OF EXTERIOR WALLS.
3. ALL DIMENSIONS ARE TO THE CENTERLINE OF FIXTURE UNLESS OTHERWISE NOTED.
4. GC TO REVIEW ELECTRICAL PLANS FOR LIGHTING OR POWER STUB LOCATIONS PRIOR TO POURING SLAB.
5. REFER TO "03300 - CAST-IN-PLACE CONCRETE" IN SPECIFICATIONS FOR CONCRETE PATCHING OR INSTALLATION INFORMATION.
6. VERIFY PERIMETER FOUNDATION INSULATION IS EXISTING IN FIELD AND NOTIFY ARCHITECT OF ANY DISCREPANCIES PRIOR TO COMMENCEMENT OF CONSTRUCTION.
7. ALL TILED FLOOR TO MAINTAIN POSITIVE SLOPE TO ALL FLOOR DRAINS OF NOT GREATER THAN 2% SLOPE FOR A 4'X4' AREA U.N.O.

FOR  
CONSTRUCTION

COPYRIGHT 2023  
 THIS DRAWING IS AN INSTRUMENT OF SERVICE  
 AND AS SUCH REMAINS THE PROPERTY OF  
 CHIPOTLE MEXICAN GRILL, INC. PERMISSION FOR  
 USE OF THIS DOCUMENT IS LIMITED AND CAN BE  
 EXTENDED ONLY BY WRITTEN AGREEMENT WITH  
 CHIPOTLE MEXICAN GRILL, INC.



CHIPOTLE MEXICAN GRILL, INC.  
 PO BOX 182566  
 COLUMBUS, OH 43218-2566  
 TELEPHONE: 614.318.2400  
 INTERNET: WWW.CHIPOTLE.COM

STORE NO.: 4870  
 WALNUT HILLS  
 1202 E MCMILLAN STREET  
 CINCINNATI, OH 45206

Issue Record:

11/03/23	PERMIT SET
05/08/24	CONSTRUCTION SET

Revisions:

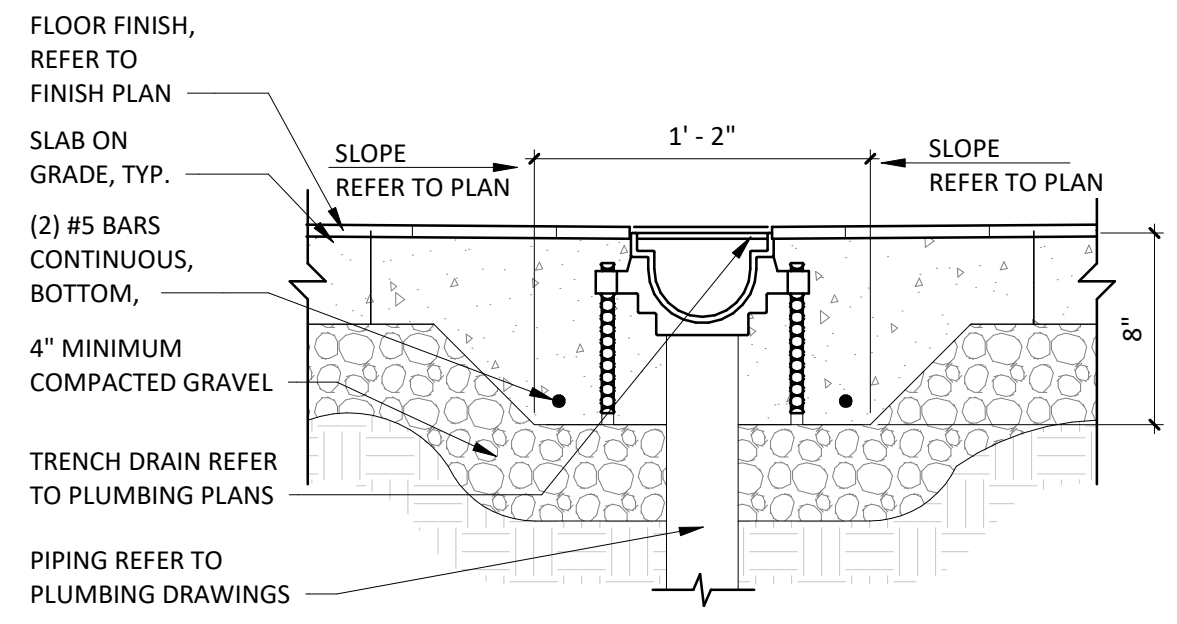
1	1/24/24	HEALTH COMMENTS
4	6/28/24	KITCHEN UPDATE

Drawn: JTH, PH  
 Checked: TC

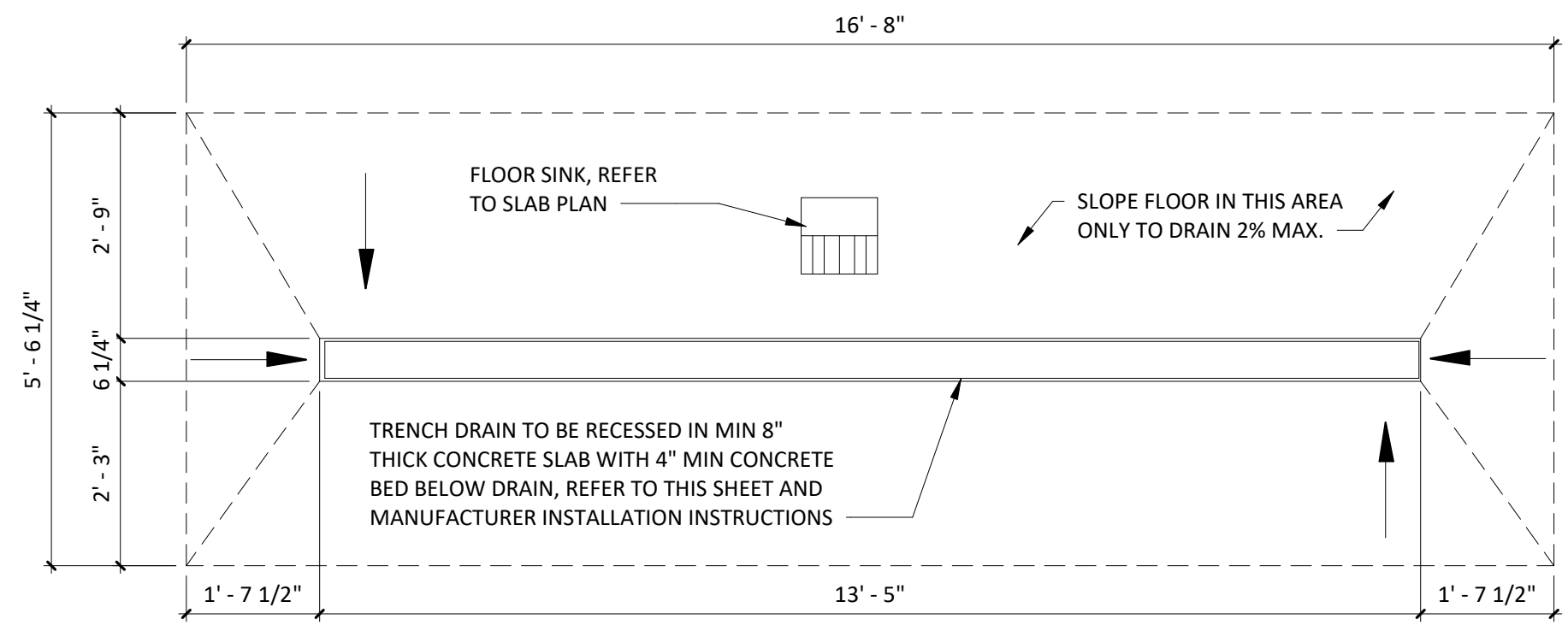
Project No.  
 CMG1144

Contents:  
 SLAB WORK PLAN

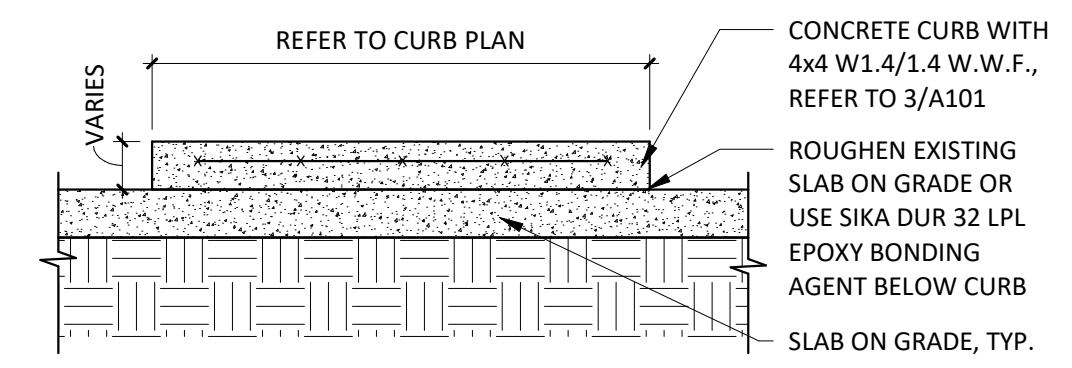
A101a



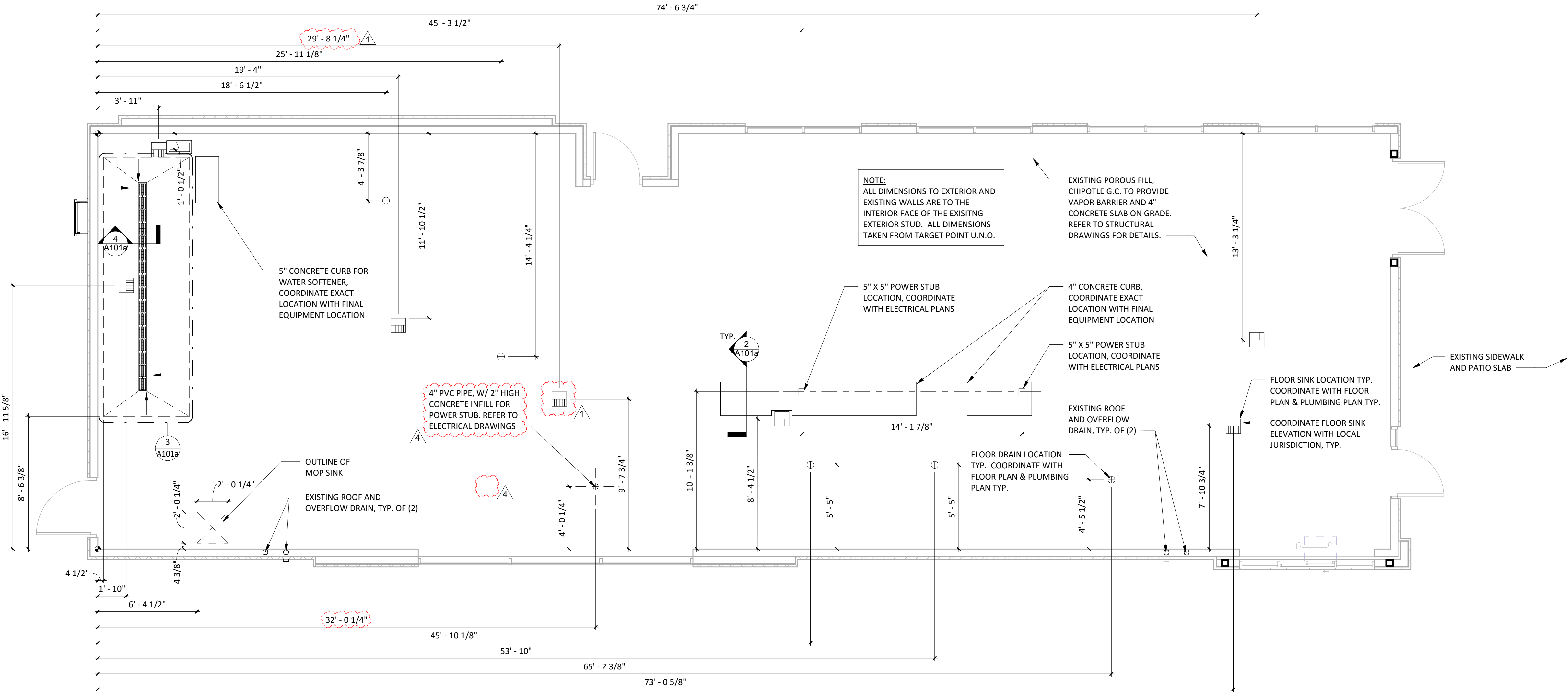
**TRENCH DRAIN DETAIL**  
 1/2" = 1'-0"



**TRENCH DRAIN PLAN DETAIL**  
 1/2" = 1'-0"



**CONCRETE CURB DETAIL**  
 3/4" = 1'-0"



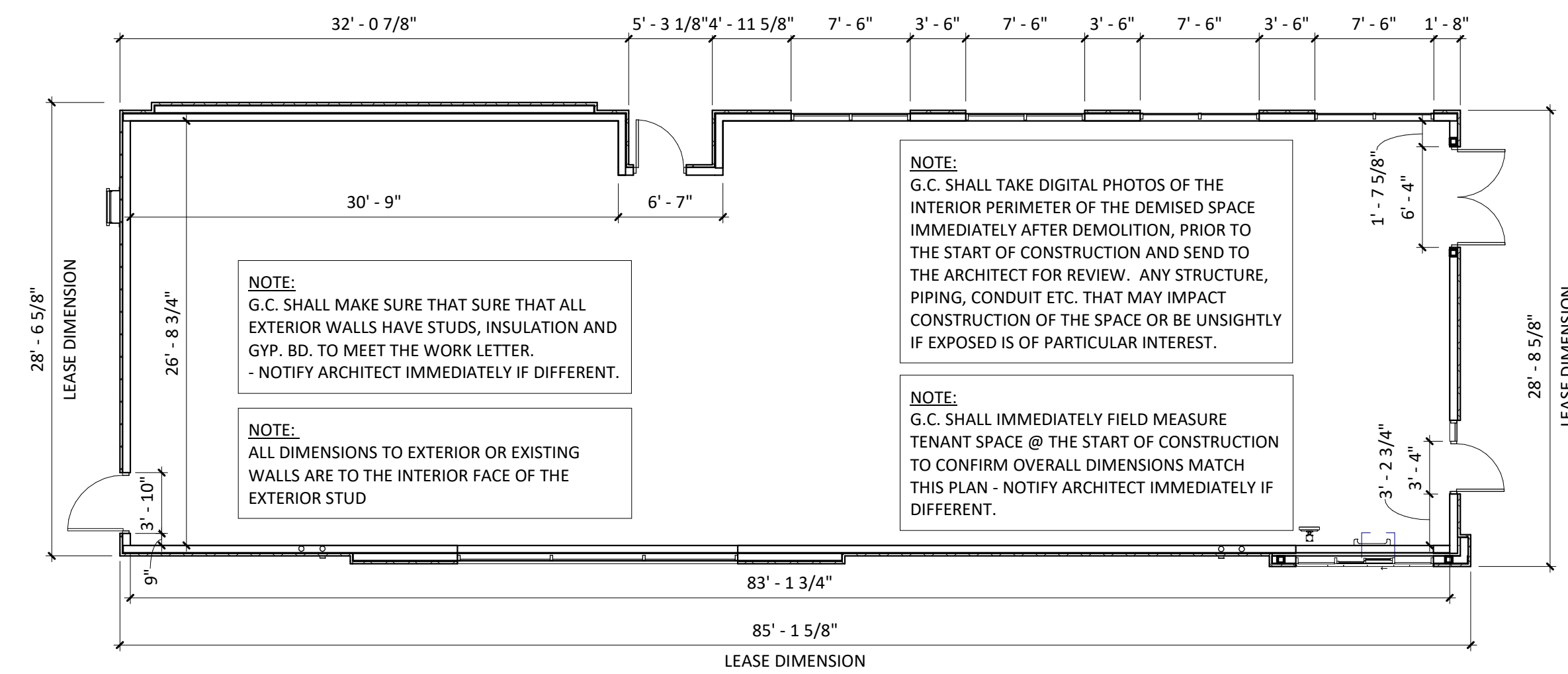
**SLAB WORK PLAN**  
 1/4" = 1'-0"

FOR  
 CONSTRUCTION

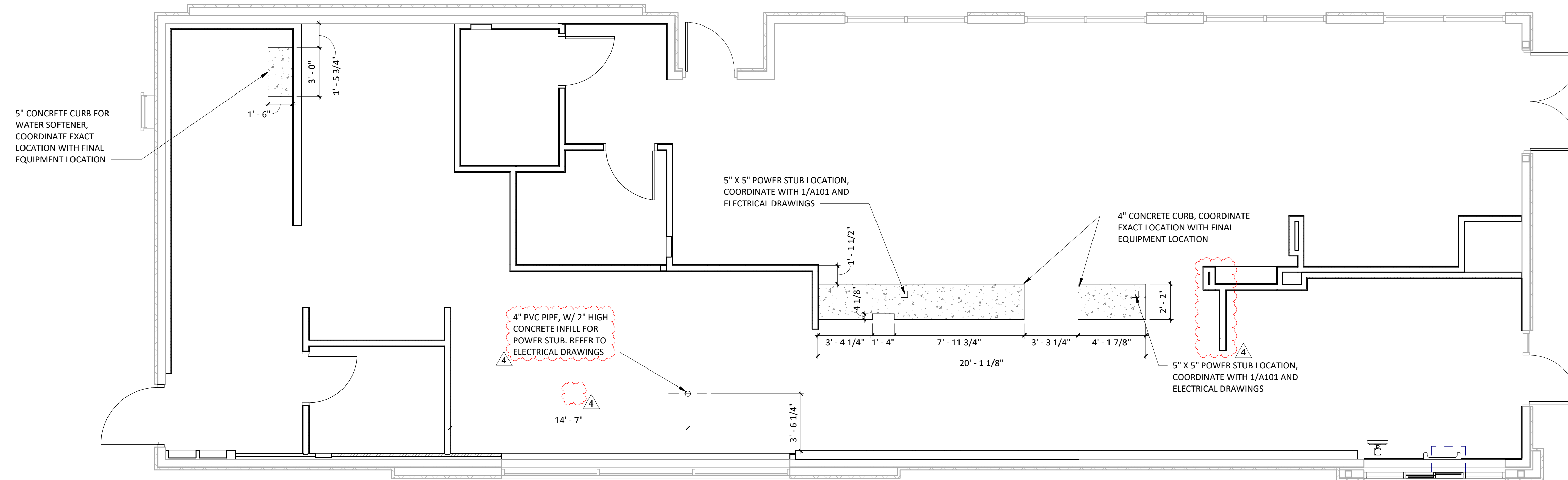
COPYRIGHT 2023  
 THIS DRAWING IS AN INSTRUMENT OF SERVICE  
 AND AS SUCH REMAINS THE PROPERTY OF  
 CHIPOTLE MEXICAN GRILL, INC. PERMISSION FOR  
 USE OF THIS DOCUMENT IS LIMITED AND CAN BE  
 EXTENDED ONLY BY WRITTEN AGREEMENT WITH  
 CHIPOTLE MEXICAN GRILL, INC.



CHIPOTLE MEXICAN GRILL, INC.  
 PO BOX 182566  
 COLUMBUS, OH 43218-2566  
 TELEPHONE: 614.318.2400  
 INTERNET: WWW.CHIPOTLE.COM



**DEMISED PREMISES PLAN**  
 1/8" = 1'-0"



**CURB PLAN**  
 1/4" = 1'-0"

STORE NO.: 4870  
 WALNUT HILLS  
 1202 E MCMILLAN STREET  
 CINCINNATI, OH 45206

Issue Record:

11/03/23	PERMIT SET
05/08/24	CONSTRUCTION SET

Revisions:

4	6/28/24	KITCHEN UPDATE
---	---------	----------------

Drawn: JTH, PH  
 Checked: TC

Project No.  
 CMG1144

Contents:  
**SLAB WORK PLAN**









# GENERAL NOTES

1. REFER TO EXTERIOR ELEVATIONS THIS SHEET FOR EXTERIOR SIGNAGE LOCATIONS, SIZES & DESCRIPTIONS.
2. EXTERIOR SIGNAGE PROVIDED BY TSV AND INSTALLED BY TSV. GC TO MAKE FINAL CONNECTION.

FOR  
 CONSTRUCTION

COPYRIGHT 2023  
 THIS DRAWING IS AN INSTRUMENT OF SERVICE AND AS SUCH REMAINS THE PROPERTY OF CHIPOTLE MEXICAN GRILL, INC.. PERMISSION FOR USE OF THIS DOCUMENT IS LIMITED AND CAN BE EXTENDED ONLY BY WRITTEN AGREEMENT WITH CHIPOTLE MEXICAN GRILL, INC..



CHIPOTLE MEXICAN GRILL, INC.  
 PO BOX 182566  
 COLUMBUS, OH 43218-2566  
 TELEPHONE: 614.318.2400  
 INTERNET: WWW.CHIPOTLE.COM

STORE NO.: 4870  
 WALNUT HILLS  
 1202 E MCMILLAN STREET  
 CINCINNATI, OH 45206

Issue Record:

11/03/23	PERMIT SET
05/08/24	CONSTRUCTION SET

Revisions:

4	6/28/24	KITCHEN UPDATE
---	---------	----------------

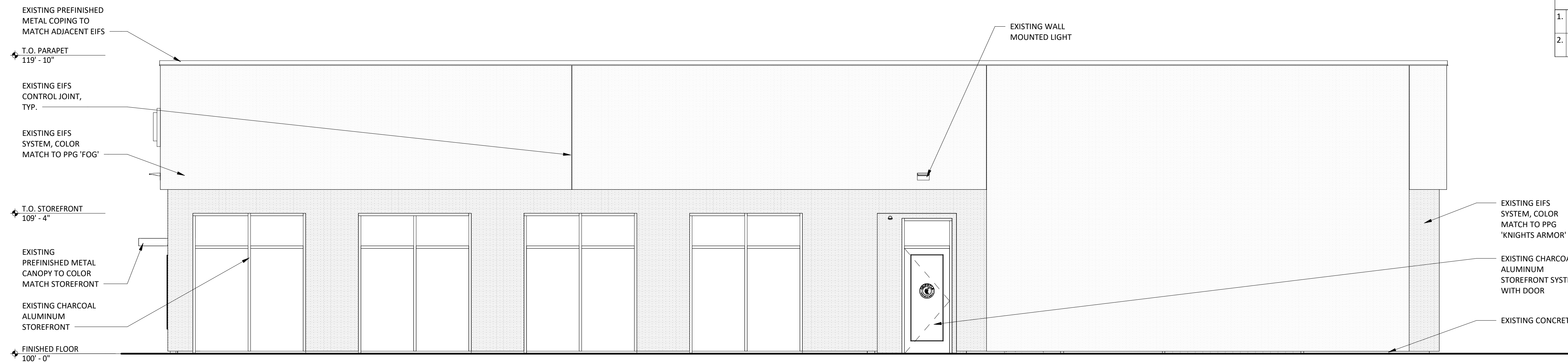
Drawn: JTH, PH  
 Checked: TC

Project No.: CMG1144

Contents:

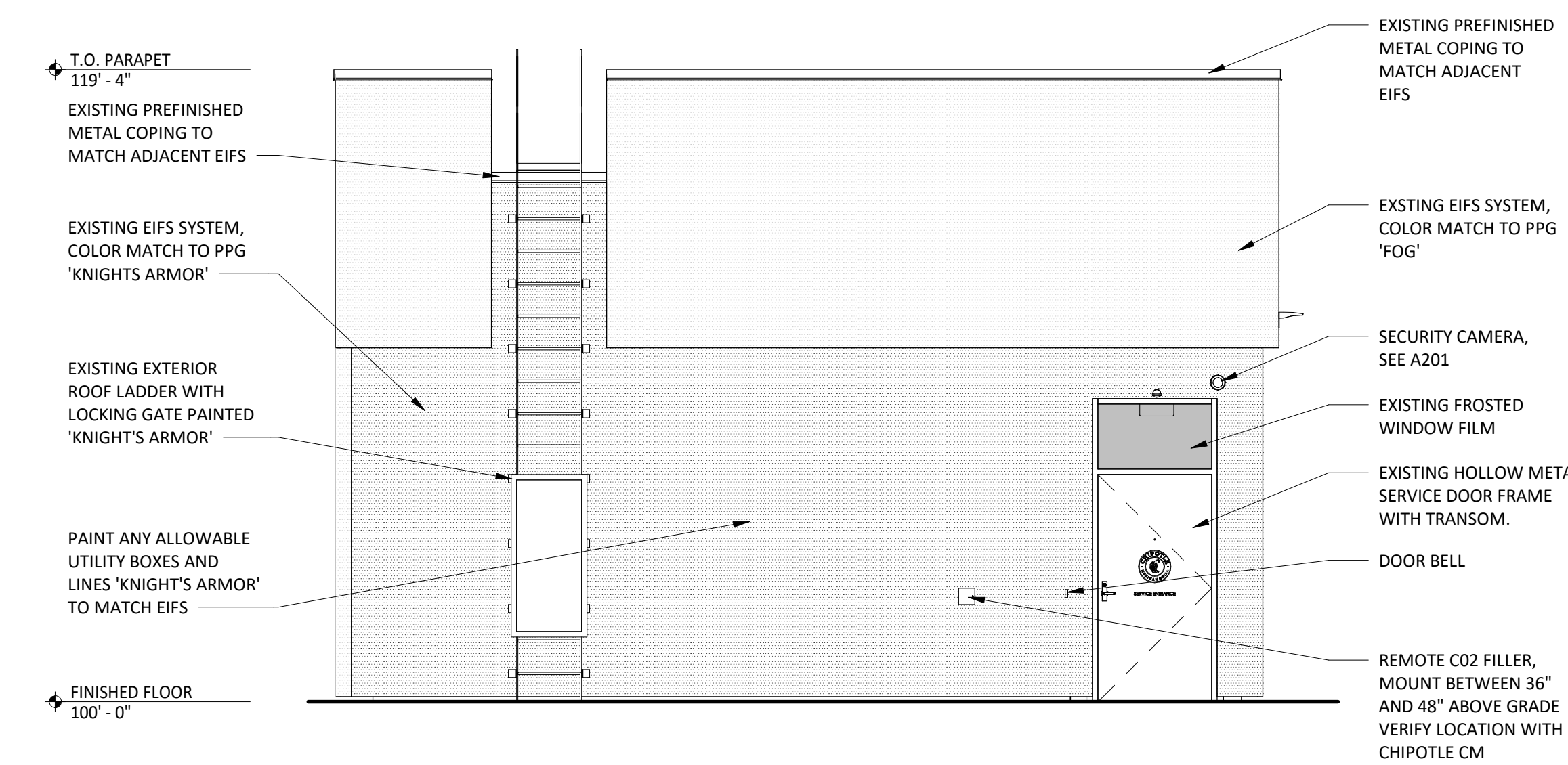
EXTERIOR  
 ELEVATIONS

A301



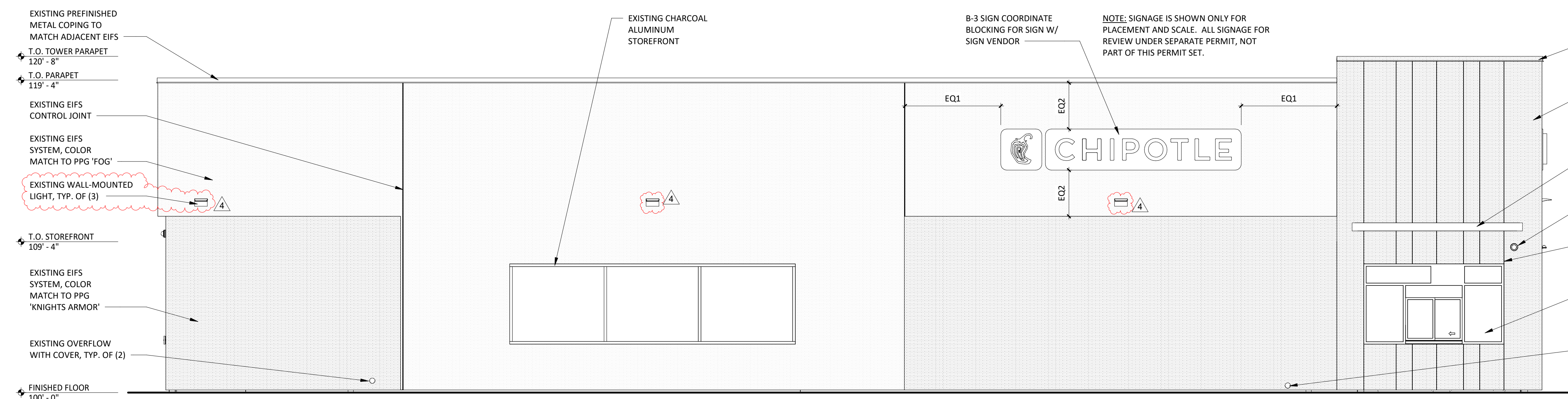
4 EXT ELEV - EAST

A301 1/4" = 1'-0"



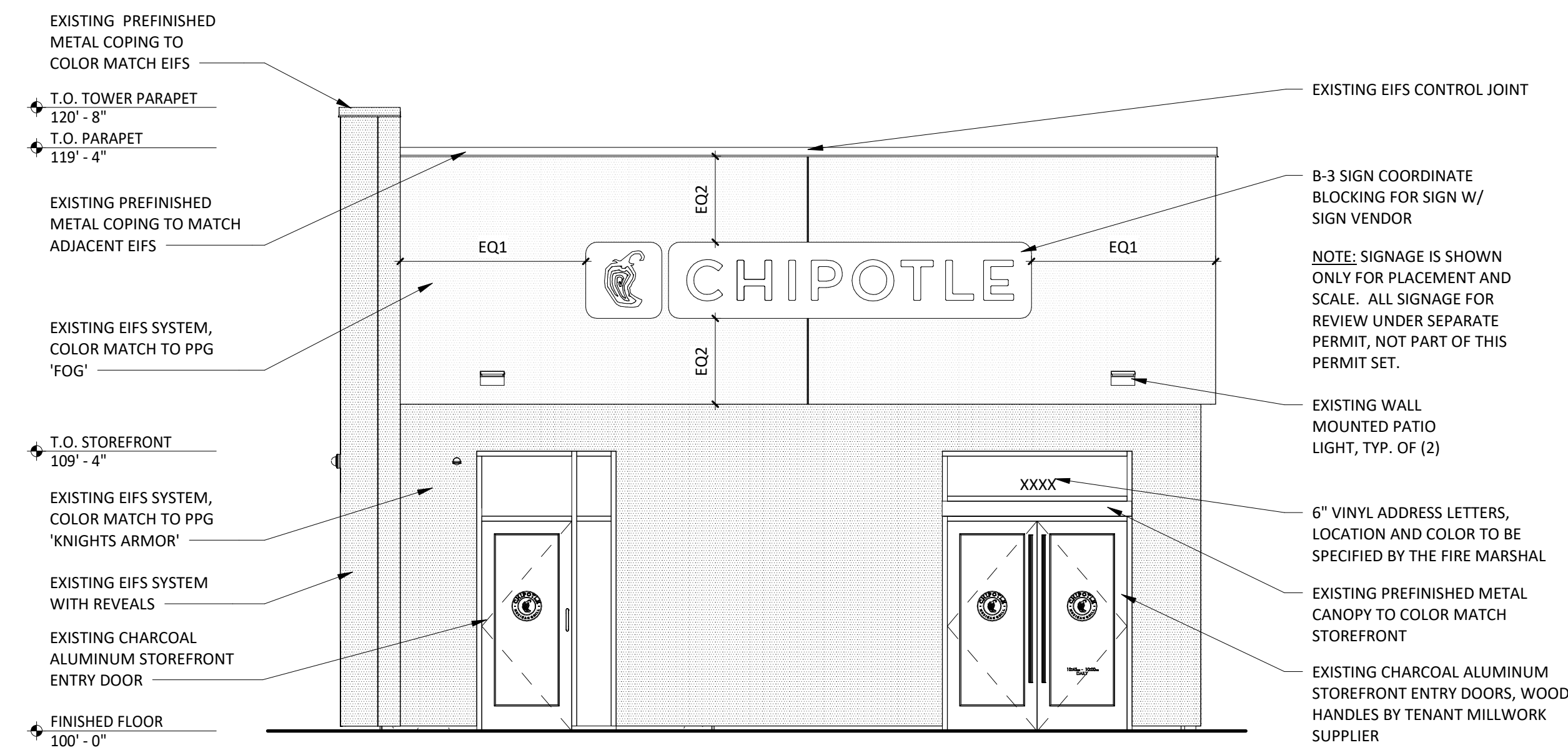
3 EXT ELEV - NORTH

A301 1/4" = 1'-0"



1 EXT ELEV - WEST

A301 1/4" = 1'-0"



2 EXT ELEV - SOUTH

A301 1/4" = 1'-0"





**LIGHTING FIXTURE SCHEDULE**

TAG	QUANTITY	TYPE	MOUNT	FURNISHED BY	INSTALLED BY	MANUFACTURER	MODEL	LAMP(S)	VOLTS	WATTS	SPECIAL REQUIREMENTS
A1	11	2x2 LED LENSED TROFFER	LAY-IN	TLS	GC	NORA LIGHTING	NPOBL-E22/334 W	(1) 3000K LED	120	30	COMPATIBLE WITH 0-10V DIMMING, FACTORY LOCKED TO 3000K
B1	8	RECESSED 6IN CAN LIGHT	CEILING	TLS	GC	NORA LIGHTING	NHIC-6G24ATFL with NTM-57W/M1 Trim	(1) 17W ECOSTORY ECO-PAR38C-17-GU24-27K-25D LED (25"-2700K) W/ GU 24 BASE	120	17	
B2	23	RECESSED 6IN CAN LIGHT W/ LED TRIM	CEILING	TLS	GC	NORA LIGHTING	NHIC-6G24ATFL WITH NLCBC-65130WW LED TRIM	INTEGRAL 3000K LED	120	17	LED TRIM FURNISHED WITH GU24 SOCKET ADAPTER
B3	2	RECESSED 6IN CAN LIGHT W/ BLACK LED TRIM	CEILING	TLS	GC	NORA LIGHTING	NHIC-6G24ATFL WITH NLCBC2-65127BB LED TRIM	INTEGRAL 3000K LED	120	12	BLACK LED TRIM FURNISHED WITH GU24 SOCKET ADAPTER
C0	4	LOW PROFILE LED - 1 FT	SURFACE	TLS	GC	HERA LIGHTING	EL/LED/12/WW	INTEGRAL 3000K LED	120	5	FURNISHED WITH COVERS, CONNECTORS, AND ONE HARDWIRE BOX OR CORD/PLUG PER SECTION
C1	1	LOW PROFILE LED - 2 FT	SURFACE	TLS	GC	HERA LIGHTING	EL/LED/22/WW	INTEGRAL 3000K LED	120	9	FURNISHED WITH COVERS, CONNECTORS, AND ONE HARDWIRE BOX OR CORD/PLUG PER SECTION
C2	20	LOW PROFILE LED - 3 FT	SURFACE	TLS	GC	HERA LIGHTING	EL/LED/34/WW	INTEGRAL 3000K LED	120	12	FURNISHED WITH COVERS, CONNECTORS, AND ONE HARDWIRE BOX OR CORD/PLUG PER SECTION
C3	4	LOW PROFILE LED - 4 FT	SURFACE	TLS	GC	HERA LIGHTING	EL/LED/46/WW	INTEGRAL 3000K LED	120	15	FURNISHED WITH COVERS, CONNECTORS, AND ONE HARDWIRE BOX OR CORD/PLUG PER SECTION
C4	1	LOW PROFILE LED - 5 FT	SURFACE	TLS	GC	HERA LIGHTING	EL/LED/59/WW	INTEGRAL 3000K LED	120	18	FURNISHED WITH COVERS, CONNECTORS, AND ONE HARDWIRE BOX OR CORD/PLUG PER SECTION
E1	6	EMERGENCY LIGHT - DUAL HEAD	VARIOUS	TLS	GC	EXITRONIX	LED-90	(2) SPECIAL LED	120	2	90 MINUTE BATTERY BACKUP
E2	4	EXTERIOR REMOTE EMERGENCY LIGHT	VARIOUS	EXT'G	EXT'G	EXITRONIX	MLED1-B-WP	(1) SPECIAL LED	4	1	LOW VOLTAGE REMOTE EMERGENCY LIGHT POWERED BY REMOTE-CAPABLE EXIT SIGN WITH MOUNTING PLATE
E4	4	WHITE EXIT SIGN WITH EMERGENCY LIGHT - STANDARD RED LETTERS	VARIOUS	EXT'G	EXT'G	EXITRONIX	CLED-U-WH	(1) SPECIAL LED	120	2	90 MINUTE BATTERY BACKUP WITH INTEGRAL EMERGENCY LIGHT, REMOTE HEAD CAPABLE
E7	7	EMERGENCY LIGHT	VARIOUS	TLS	GC	DUAL-LITE	EV2	(2) 1W INTEGRAL LED	120	1	90 MINUTE BATTERY BACKUP
H1	8	HOOD LIGHT	SURFACE	THS/TLS	THS	VAPOR PROOF LIGHT FIXTURE FURNISHED WITH HOOD	FURNISHED WITH HOOD	(1) TCP L16A19N1527K	120	23	INSTALL LAMP FURNISHED SEPARATELY BY LIGHTING SUPPLIER
J4	2	DECORATIVE PENDANT	SURFACE	TLS	GC	BARNLIGHT	BLE-C-CPT10-ASH-100-SBK-100-CAW	GREEN CREATIVE 9A19DIM/927/GU24/R	120	9	WITH BLACK LAMP SHADE, BLACK CORD, AND OAK LAMP HOLDER
P6	1	DECORATIVE DINING ROOM PENDANT	SURFACE	TLS	GC	BARN LIGHT	BLE-C-JGT-133-35630-3	INTEGRAL LED	120	30	HARDWIRED SET OF (3) HEADS WITH UNIVERSAL CANOPY AND STANDARD BLACK CABLES
S1	1	DRIVE-UP PICK-UP WINDOW CHIME/STROBE	WALL	TLS	GC	FEDERAL SIGNAL	SLM500B W/ SLMBW-012-024	INTEGRAL	16	0	SET SWITCH A TO "CHIME 1 SINGLE" (11011) AND SWITCH B TO "CHIME 2 SINGLE" (00111)
T1	9	TRACK HEAD	TRACK	TLS	GC	JUNO	R605L 30K 90CRI PDIM WFL BL	INTEGRAL LED	120	10	BLACK CYLINDER TRACK HEAD W/ UNIVERSAL 120V TRAC ADAPTER AND WIDE FLOOD BEAM
T-6	3	TRACK (6 FEET)	SURFACE	TLS	GC	JUNO	T 6FT BK	N/A	120	0	SINGLE CIRCUIT, BLACK FINISH
TCL-0.5	1	CURRENT LIMITER (60W)	SURFACE	TLS	GC	JUNO	TCLFM11 BL W/ TCCB 0.5A BLCK	N/A	120	0	BLACK CURRENT LIMITING END FEED
TCL-1	1	CURRENT LIMITER (120W)	SURFACE	TLS	GC	JUNO	TCLFM11 BL W/ TCCB 1A BLCK	N/A	120	0	BLACK CURRENT LIMITING END FEED
W1	4	WIC LED FIXTURE	SURFACE	WCS	GC	FURNISHED WITH WIC	FURNISHED WITH WIC	INTEGRAL LED	120	29	WET-RATED COOLER FIXTURE
X1	1	RECESSED 6IN CAN LIGHT W/ LED TRIM	CEILING	EXT'G	EXT'G	NORA LIGHTING	NHIC-6G24ATFL WITH NLCBC-65130WW LED TRIM	INTEGRAL 3000K LED	120	17	LED TRIM FURNISHED WITH GU24 SOCKET ADAPTER
X6	3	EXTERIOR FLOOD LIGHT	SURFACE	EXT'G	EXT'G	RAB LIGHTING	LFLFED5YB	INTEGRAL LED	120	10	(2) LFLFED5YB NEEDED PER FIXTURE. ALSO PROVIDE WALL MOUNTED J-BOX WITH COVER PLATE FOR MOUNTING.
X9	2	LED CHANNEL LIGHT	SURFACE	EXT'G	EXT'G	PARADIGM LED	AMC-2410-S W/ OPAL LENS AND END CAPS	FLEXSR-45-30-67-24	120		FURNISHED W/ REMOTE-MOUNTED NEMA 3R LED DRIVER. SEE PLAN FOR LENGTHS.

**LIGHTING FIXTURE SCHEDULE NOTES**  
 A. FLUORESCENT LAMPS NOT INCLUDED WITH THE FIXTURE ARE TO BE MANUFACTURED BY SYLVANIA UNLESS OTHERWISE NOTED. PHILIPS FLUORESCENT LAMPS WILL BE AN ACCEPTABLE ALTERNATE.  
 B. SEE THE ARCHITECTURAL REFLECTED CEILING PLAN FOR EXACT LIGHT LOCATIONS.  
 C. SEE THE ARCHITECTURAL LIGHTING DETAILS FOR FIXTURE CONSTRUCTION DETAILS.

**LIGHTING CONTROL PANEL SCHEDULE: LCP**

RELAY	PANEL	CIRCUIT	AREA SERVED	CONTROL	TIME ON	TIME OFF	DIMMER CONTROL	NOTES
R1	A	32	KITCHEN A	TIMECLOCK	7:00:00 AM	12:00:00 AM	N/A	SINGLE POLE (NC)
R2	A	32	KITCHEN B	TIMECLOCK	7:00:00 AM	12:00:00 AM	N/A	SINGLE POLE (NC)
R3			SPARE				N/A	SINGLE POLE (NC)
R4	A	30	DINING ROOM A	TIMECLOCK	10:00:00 AM	12:00:00 AM	N/A	SINGLE POLE (NC)
R5	A	30	DINING ROOM B	TIMECLOCK	10:00:00 AM	12:00:00 AM	N/A	SINGLE POLE (NC)
R6	A	30	DINING ROOM DL	TIMECLOCK	10:00:00 AM	12:00:00 AM	N/A	SINGLE POLE (NC)
R7	A	28	RESTROOM EXHAUST FAN	TIMECLOCK	7:00:00 AM	12:00:00 AM	N/A	SINGLE POLE (NC)
R8	A	42	EXT. LIGHTING/SIGNAGE	TIMECLOCK	SUNSET - 1 HR	12:00:00 AM	N/A	SINGLE POLE (NC)

**LIGHTING CONTROL COMPONENTS SCHEDULE**

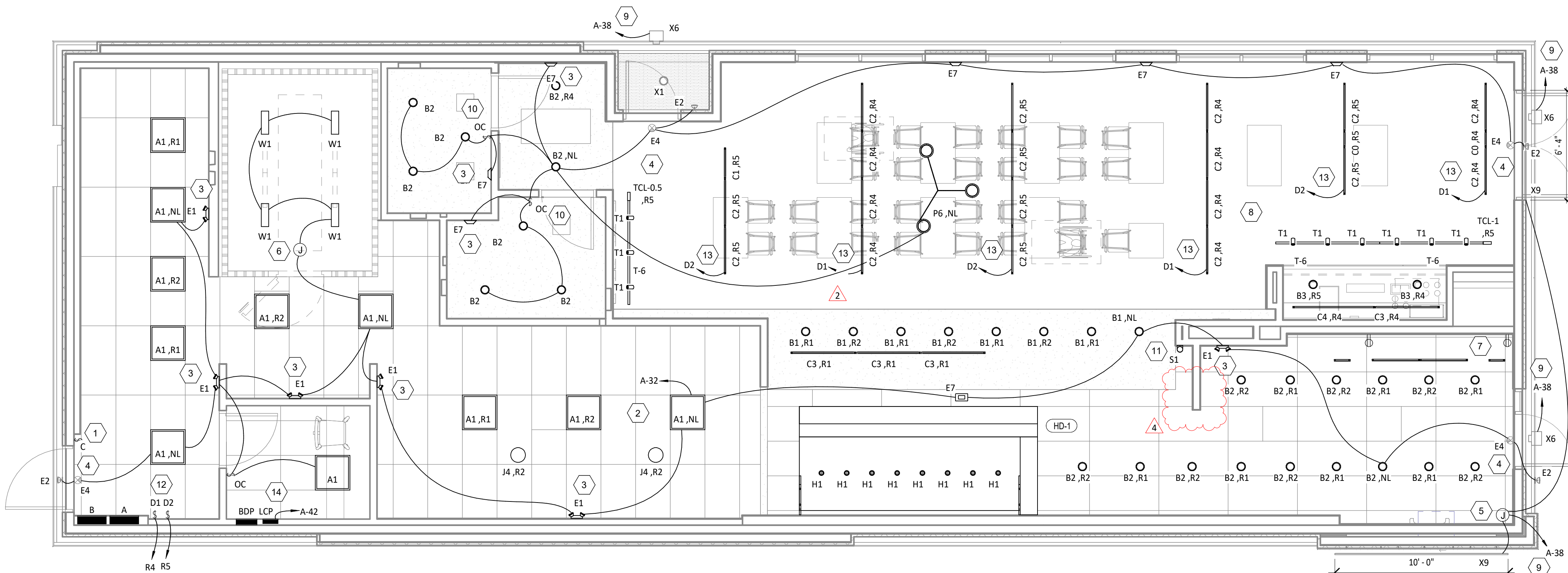
	DESCRIPTION	QUANTITY	FURNISHED BY	INSTALLED BY	MANUFACTURER	MODEL	REMARKS
LCP	WALL-MOUNTED LIGHTING CONTROL PANEL	1	TLS	GC	ACUITY	ARP INTENC08 NLT 8SPR MVOLT FM DTC	8 RELAY PANEL FOR DIMMING CONTROL WITH FLUSH MOUNT ENCLOSURE, AND DIGITAL TIME CLOCK
§C	WALL-MOUNTED OVERRIDE SWITCH (4 CHANNEL)	1	TLS	GC	ACUITY	nPODMA 4P WH	SEE LIGHTING CONTROL DIAGRAM FOR SWITCH CONFIGURATION
§D	WALL-MOUNTED DIMMER SWITCH	2	TLS	GC	COOPER	SAL06P-W	SLIDE DIMMER COMPATIBLE WITH UP TO 300W LED LIGHTING. SET AT 50%. IF DINING ROOM LIGHTS FLICKER AT THIS DIMMER SETTING THEN GC SHALL PROVIDE LUTRON DVCL-253P DIMMER AS REPLACEMENT.
§OC	WALL-MOUNTED LINE VOLTAGE OCCUPANCY SENSOR	2	TLS	GC	HUBBELL	LHMTS 1-N-WH	WHITE DUAL TECHNOLOGY SINGLE RELAY WITH 1 BUTTON AND NEUTRAL WIRING

**ELECTRICAL LIGHTING PLAN NOTES**

- INSTALL WALL-MOUNTED LIGHTING OVERRIDE SWITCH AND CONNECT TO LCP AS SHOWN IN DETAIL 6/E710
- FOR UNCIRCUITED LIGHT FIXTURES, CONNECT TO RELAY CIRCUIT INDICATED NEXT TO THE FIXTURE TAG THROUGH THE LIGHTING CONTROL PANEL (LCP) UNLESS NOTED OTHERWISE.
- WALL MOUNT THE EMERGENCY LIGHT FIXTURE AT 6" BELOW THE CEILING UNLESS NOTED OTHERWISE
- VERIFY MOUNTING HEIGHT OF EXIT SIGN PRIOR TO ROUGH IN. EXIT SIGN MUST BE VISIBLE FROM AREA SERVED AFTER BUILDING SYSTEMS HAVE BEEN INSTALLED. SEE ARCHITECTURAL ELEVATIONS FOR FURTHER INFORMATION.
- RELOCATE LED DRIVERS FURNISHED WITH THE X9 LED STRIP LIGHTS ON WALL 6" ABOVE THE CEILING IN AN ACCESSIBLE LOCATION. PROVIDE LOW VOLTAGE WIRING FROM LED DRIVER TO THE X9 LIGHT FIXTURES AS SHOWN.
- INSTALL LIGHT FIXTURES FURNISHED WITH THE WALK-IN COOLER. PROVIDE UNSWITCHED CONDUCTOR FROM LIGHTING CIRCUIT TO WALK-IN COOLER LIGHTING J-BOX AND FROM J-BOX TO LIGHT FIXTURES AS SHOWN. CONDUIT BETWEEN LIGHT FIXTURES SHALL BE ROUTED ON THE INTERIOR OF THE WALK-IN COOLER. SEAL INTERIOR AND EXTERIOR OF CONDUITS WHERE THEY PASS THROUGH THE WALK-IN COOLER ENVELOPE PER THE NEC.

**ELECTRICAL LIGHTING PLAN NOTES**

- PROVIDE (2) GFCI RECEPTACLES FOR UNDERSHELF LIGHTING AS SHOWN. CONNECT TO SWITCHED LEG OF THE KITCHEN LIGHTING CIRCUIT. SEE ELEVATIONS ON SHEET E700 FOR RECEPTACLE LOCATIONS, HEIGHTS, AND CIRCUITING. INSTALL RECEPTACLES IN A HORIZONTAL ORIENTATION.
- PROVIDE UNISTRUT AS SHOWN ON THE ARCHITECTURAL RCP PER THE ARCHITECTURAL UNISTRUT DETAIL. TYPICAL.
- CONNECT EXTERIOR LIGHTING CIRCUIT TO CIRCUIT SHOWN THROUGH THE EXTERIOR LIGHTING CONTACTOR PANEL PER DETAIL 6/E710.
- INSTALL WALL-MOUNTED OCCUPANCY SENSOR FURNISHED BY LIGHTING SUPPLIER AT 42" AFF. ADJUST OCCUPANCY SENSOR TO PROVIDE AUTOMATIC ON/AUTOMATIC OFF OPERATION WITH A FIXED TIMER OF 30 MINUTES AND WITH BOTH THE PASSIVE INFRARED AND ULTRASONIC SENSORS ENABLED.
- INSTALL CHIME/STROBE FURNISHED WITH VEHICLE DETECTION SYSTEM ON WALL 12" BELOW CEILING AND CONNECT TO VEHICLE DETECTOR SYSTEM PER THE MANUFACTURER'S INSTALLATION INSTRUCTIONS.
- INSTALL WALL-MOUNTED DIMMERS ABOVE PANELBOARDS 6" ABOVE LAY-IN CEILING FOR CONTROL OF DINING ROOM OVERHEAD STRIP LED LIGHTS. CONNECT DIMMERS TO RELAYS SHOWN THROUGH THE LIGHTING CONTROL PANEL. SET DIMMERS AT 50%.
- CONNECT DINING ROOM (RELAY CIRCUITS R4, R5, AND R6) OVERHEAD STRIP LED LIGHTS TO THE RELAY INDICATED THROUGH THE CORRESPONDING WALL-MOUNTED DIMMER INSTALLED ABOVE THE PANELBOARDS.
- INSTALL LIGHTING CONTROL SYSTEM PER DETAIL 6/E710.



**LIGHTING FLOOR PLAN**  
 1/E100  
 1/4" = 1'-0"

Consultant:  
**NATIONAL ENGINEERING**  
 4635 Trueman Blvd, Suite 250  
 Hilliard, Ohio 43026  
 Phone: (614) 751-9610  
 Fax: (614) 552-5240  
 Contact: Cliff Kigar  
 (614) 328-2033  
 ckigar@nationalengineering.com

FOR CONSTRUCTION

COPYRIGHT 2024  
 THIS DRAWING IS AN INSTRUMENT OF SERVICE AND AS SUCH REMAINS THE PROPERTY OF CHIPOTLE MEXICAN GRILL, INC. PERMISSION FOR USE OF THIS DOCUMENT IS LIMITED AND CAN BE EXTENDED ONLY BY WRITTEN AGREEMENT WITH CHIPOTLE MEXICAN GRILL, INC.



CHIPOTLE MEXICAN GRILL, INC.  
 PO BOX 182566  
 COLUMBUS, OH 43218-2566  
 TELEPHONE: (614) 318-2400  
 INTERNET: WWW.CHIPOTLE.COM

STORE NO.: 4870  
 WALNUT HILLS, OH  
 1202 E. MCMILLAN  
 CINCINNATI, OH 45206

Issue Record:  
 11/03/2023 PERMIT SET  
 05/08/2024 CONSTRUCTION SET

Revisions:  
 2 4/25/24 PLAN REVIEW COMMENTS  
 4 06/27/24 KITCHEN UPDATE

Drawn: CJK  
 Checked: JEJ

Project No:  
 2301004

Contents:  
**ELECTRICAL LIGHTING PLAN**

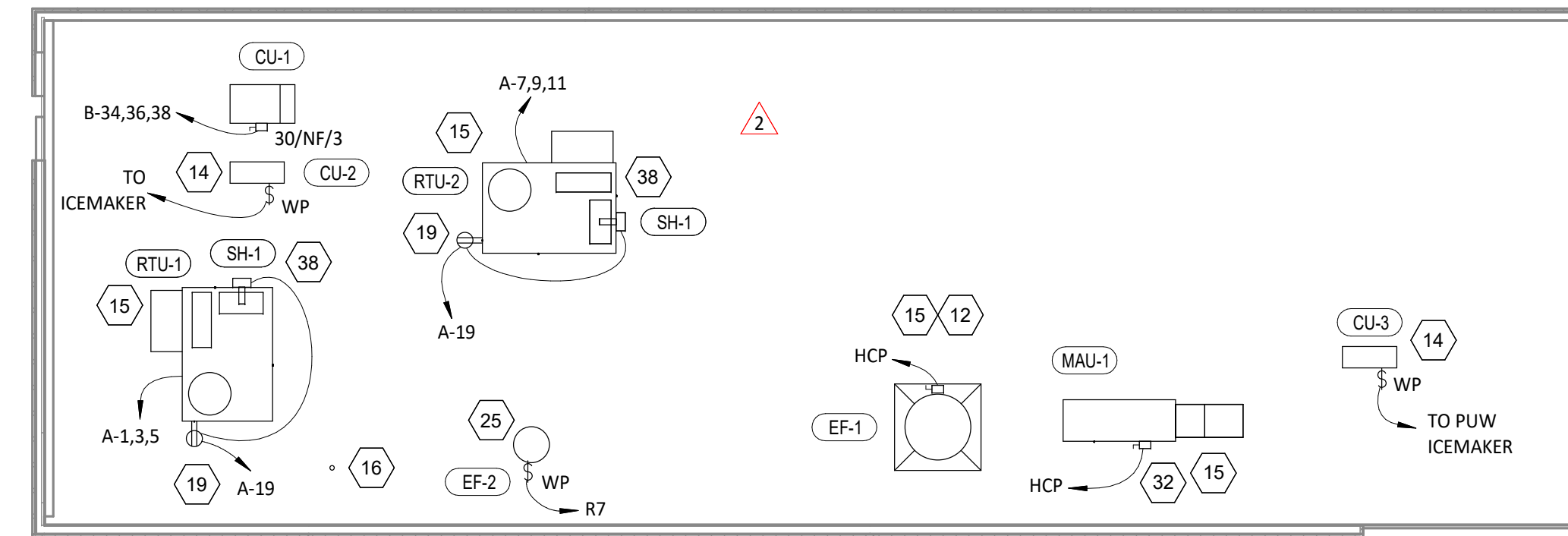
**E100**

**ELECTRICAL POWER PLAN NOTES**

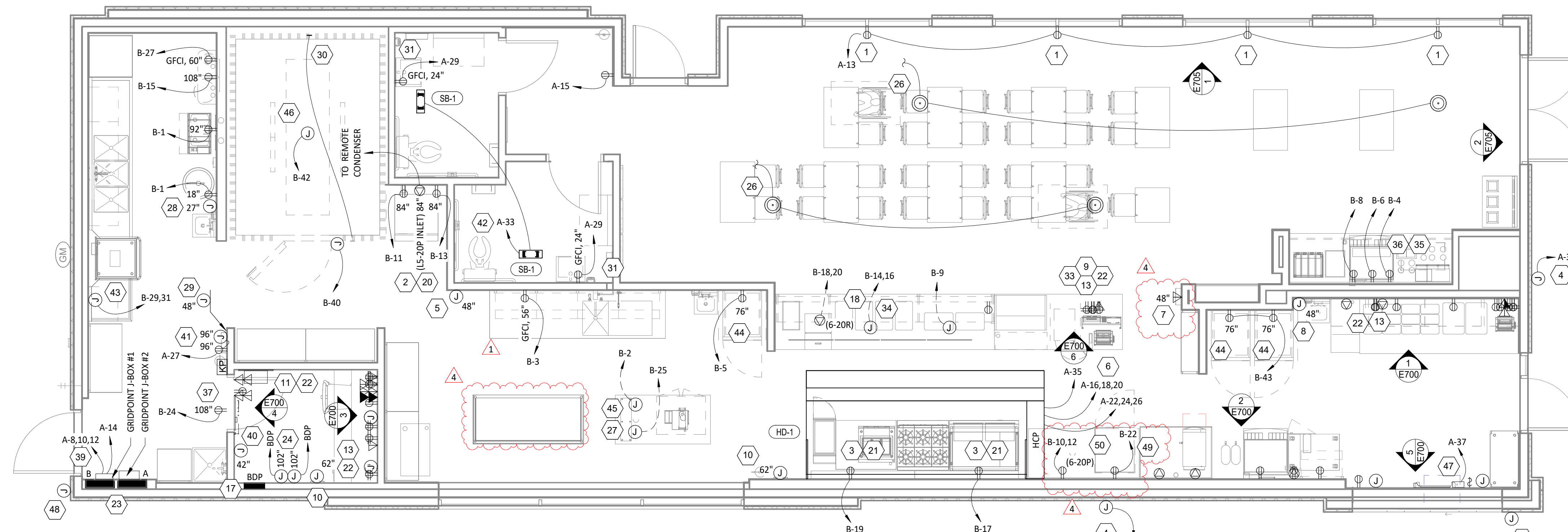
- SHOW ROOM WINDOW RECEPTACLE. COORDINATE EXACT RECEPTACLE MOUNTING HEIGHT IN THE FIELD. LOCATION SHALL BE IN THE DRYWALL IMMEDIATELY ABOVE THE MAIN STORE-FRONT WINDOW AND AS SHOWN IN THE DINING ROOM ELECTRICAL ELEVATIONS ON SHEET E700.
- ICE MACHINE ELECTRICAL TIE-IN. COORDINATE EXACT LOCATION WITH EQUIPMENT INSTALLER PRIOR TO ROUGH-IN. PROVIDE L5-20P FLANGED INLET WIRED TO THE REMOTE CONDENSER. PROVIDE 48" CORDS, ONE WITH 5-20P END AND ONE WITH L5-20R END, FROM ICE MAKER TO RECEPTACLE AND FLANGED INLET.
- CONNECT RECEPTACLES SERVING EQUIPMENT BELOW THE KITCHEN HOOD TO THE CIRCUITS SHOWN THROUGH THE CONTACTOR INTEGRAL TO THE HOOD CONTROL PANEL. INTEGRAL CONTACTOR SHALL BE INTERLOCKED TO HOOD FIRE PROTECTION SYSTEM SO THAT RECEPTACLES ARE DE-ENERGIZED UPON ACTIVATION OF HOOD FIRE PROTECTION SYSTEM.
- JUNCTION BOX FOR EXTERIOR SIGN LIGHTING. COORDINATE EXACT LOCATION WITH CHIPOTLE'S CONSTRUCTION MANAGER AND THE SIGN INSTALLER PRIOR TO ROUGH-IN. CONNECT TO CIRCUIT SHOWN THROUGH THE EXTERIOR LIGHTING CONTACTOR PANEL AS SHOWN IN DETAIL 6/E710.
- PROVIDE 4" OCTAGONAL JUNCTION BOX WITH SCREW THREADS SET AT THE 2 & 8 O'CLOCK POSITIONS FOR THE ANSUL PULL STATION. PROVIDE A 1/2" CONDUIT FROM THE J-BOX TO 6" ABOVE THE CEILING AND TERMINATE WITH A CONDUIT BUSHING. COORDINATE EXACT LOCATION WITH THE ANSUL SYSTEM INSTALLER AND THE FIRE MARSHALL PRIOR TO ROUGH-IN.
- HOOD CONTROL PANEL AND ANSUL CABINET SHALL BE LOCATED WITHIN THE INTEGRAL HOOD UTILITY CABINET. PROVIDE FINAL ELECTRICAL CONNECTIONS PER THE MANUFACTURER'S INSTALLATION INSTRUCTIONS NECESSARY FOR A COMPLETE AND OPERATIONAL SYSTEM.
- PROVIDE SINGLE-GANG J-BOX FOR DATA JACK AS SHOWN FOR KRONOS TIME CLOCK.
- PROVIDE AN EMPTY SINGLE GANG J-BOX FOR VOLUME CONTROLS. INSTALL THE CATS VOLUME CONTROL WIRE FURNISHED BY THE TENANT FROM THE J-BOX TO THE AMPLIFIER IN THE OFFICE WITH 3 FEET OF SLACK AT EACH END.
- COORDINATE DATA/POWER RECEPTACLE MOUNTING REQUIREMENTS WITH THE CASE WORK INSTALLER PRIOR TO ROUGH-IN.
- PROVIDE ROUGH-IN FOR LAUNCHPORT AS NOTED. LAUNCHPORT WILL BE FURNISHED AND INSTALLED BY CHIPOTLE WITH THE WALLSTATION AT 62" AFF. PROVIDE A 4" X 2-1/8" DEEP OCTAGON J-BOX WITH 1-1/2" EXTENSION RING AT 62" AFF FOR THE WALLSTATION INSTALLATION WITH A 1" CONDUIT WITH PULL STRING FROM THE J-BOX TO ABOVE THE OFFICE CEILING.
- PROVIDE AN EMPTY 1" CONDUIT WITH PULL STRING FROM THE BASE BUILDING'S TELEPHONE SERVICE ENTRANCE LOCATION TO THE SPACE ABOVE THE OFFICE CEILING.
- PROVIDE A SUITABLE LENGTH OF LIQUID-TIGHT CONDUIT TO THE EXHAUST FAN EF-1 TO ALLOW THE EXHAUST FAN TO HINGE COMPLETELY OPEN WHEN THE VIROGUARD SYSTEM IS INSTALLED.
- AFTER THE FAX LINE, POS, AND OFFICE EQUIPMENT IS INSTALLED PROVIDE CHILDPROOF RECEPTACLE COVERS ON UNUSED IG RECEPTACLES AT THE FAX LINE, POS, AND OFFICE.
- PROVIDE ONE PHASE, ONE NEUTRAL, AND ONE GROUND CONDUCTOR FROM THE ICE MAKER TO THE REMOTE CONDENSING UNIT.
- UNIT SHALL HAVE AN INTEGRAL NON-FUSED DISCONNECT SWITCH.
- PROVIDE 3" CONDUIT (EMT, IMC, OR RMC) THROUGH ROOF. TERMINATE WITH WEATHERHEAD 12" ABOVE ROOF FOR FUTURE CELL BOOSTER.
- INSTALL THE BYPASS DISTRIBUTION PANEL (BDP) FURNISHED BY THE TENANT. INSTALL PER THE MANUFACTURER'S INSTALLATION INSTRUCTIONS AND DETAIL 3/E710.
- ROUGH-INS TO SERVE LINE AND POS EQUIPMENT ARE UNDERGROUND. COORDINATE ROUGH-IN REQUIREMENTS AND LOCATIONS WITH EQUIPMENT MANUFACTURER PRIOR TO ROUGH-IN.
- ROOFTOP UNIT SHALL HAVE AN INTEGRAL UNIT-MOUNTED GFCI RECEPTACLE. PROVIDE CONNECTION TO CIRCUIT SHOWN.
- ICE MAKER RECEPTACLES SHALL BE CONCEALED BEHIND THE ICE MAKER. COORDINATE LOCATION WITH ACTUAL WIDTH OF ICE MAKER.
- PROVIDE VERTICAL METAL DIE CAST WEATHERPROOF WHILE IN USE OUTLET COVER ON RECEPTACLES AT COOK LINE. COVER SHALL BE INTERMATIC WP1010MXD FOR SINGLE GANG BOXES AND WP1030MXD FOR DOUBLE GANG BOXES. NO SUBSTITUTIONS SHALL BE ACCEPTED.
- LABEL BATTERY-PROTECTED RECEPTACLES "BATTERY-PROTECTED: DISCONNECT AT PANEL BDP".
- LABEL MAIN DISCONNECT SWITCH AND PANEL A "WARNING: BATTERY-PROTECTED RECEPTACLES IN USE. DISCONNECT AT PANEL BDP."
- PROVIDE JUNCTION BOX FOR POWER INLET AND OUTLET TO THE UPS. CONNECT POWER TO THE UPS PER THE MANUFACTURER'S DIRECTIONS.
- CONNECT RESTROOM EXHAUST FAN TO CIRCUIT SHOWN THROUGH THE LIGHTING CONTROL PANEL (LCP).

**ELECTRICAL POWER PLAN NOTES**

- INSTALL 16/2 SPEAKER WIRE FURNISHED BY OWNER. INSTALL SPEAKER WIRE BETWEEN SPEAKERS IN THE DINING ROOM AS SHOWN AND TO THE AMPLIFIER IN THE OFFICE WITH 3 FEET OF SLACK AT EACH END. THERE SHALL BE TWO SPEAKER WIRE HOMERUNS WITH TWO SPEAKERS ON EACH HOMERUN. SEE ARCHITECTURAL PLANS FOR SPEAKER LOCATIONS. ADJUST EACH SPEAKER 70V TAP SETTING TO BE 15 WATTS.
- PROVIDE POWER CONNECTIONS TO ISLAND PREP TABLE PER DETAIL 2/E710. PROVIDE GFCI DUPLEX RECEPTACLES IN THREE J-BOXES INTEGRAL TO PREP TABLES (FOR UNDERCOUNTER REFRIGERATOR, HOT HOLDING CABINET, AND GENERAL RECEPTACLE).
- PROVIDE GFCI RECEPTACLE AND J-BOX AND INSTALL CO2 ALARM FURNISHED BY COZAS AS SHOWN IN DETAIL 4/E710.
- PROVIDE J-BOX AND INSTALL CO2 ALARM REMOTE DISPLAY UNIT FURNISHED BY COZAS AS SHOWN IN DETAIL 4/E710.
- INSTALL WALK-IN-COOLER EXTERNAL READOUT THERMOMETER REMOTE PROBE ON WALL OPPOSITE FROM DOOR AS SHOWN. ROUTE TEMPERATURE PROBE WIRE ABOVE WALK-IN COOLER CEILING PANELS, SEAL PENETRATIONS THROUGH THE CEILING PANELS, AND SECURE VERTICAL PROBE WIRE TIGHT TO WALLS. NO EXCESS PROBE WIRE SHALL BE WITHIN THE WALK-IN COOLER.
- PROVIDE RECEPTACLE FOR RESTROOM HAND SINK FAUCET AS SHOWN IN DETAIL 14/P700.
- PROVIDE A TWO-CONDUCTOR LOW VOLTAGE WIRE IN 3/4" C. AND (4) #12, #12 N., #12 G. IN 1" C. FROM MAU-1 TO THE HOOD CONTROL PANEL PER THE MANUFACTURER'S INSTALLATION INSTRUCTIONS.
- PROVIDE 1" CONDUITS FROM LOW-VOLTAGE J-BOXES AT POS COUNTER CONCEALED WITHIN THE SERVE LINE WIRING CHASE TO THE WALL, THEN CONCEALED WITHIN THE WALL AND ABOVE THE CEILING TO ABOVE THE OFFICE CEILING.
- IF NEUTRAL CONDUCTOR IS NOT NEEDED FOR SERVE LINE HOT FOOD SERVER TERMINATE NEUTRAL IN JUNCTION BOX.
- LABEL UTENSIL COUNTER RECEPTACLES "TRACTOR BEVERAGE", "ICE MAKER/MSB", AND "SODA FOUNTAIN".
- PROVIDE CORD AND NEMA 5-20P PLUG FROM UTENSIL COUNTER ICE MAKER, THROUGH UTENSIL COUNTER, TO ICE MAKER RECEPTACLE.
- LABEL RECEPTACLE "UV INSECT TRAP".
- INSTALL TRANSFORMER FURNISHED BY TUV WITH THE REME HALO AIR PURIFIER IN THE JUNCTION BOX ON THE EXTERIOR OF THE RTU PER DETAIL 6/M700. CONNECT LINE SIDE OF THE TRANSFORMER TO THE RTU SERVICE RECEPTACLE CIRCUIT SO THAT REME HALO RUNS CONTINUOUSLY. CONNECT THE LOW VOLTAGE SIDE OF THE TRANSFORMER TO THE REME HALO USING THE INCLUDED BARREL PLUG.
- PROVIDE (2) 10"x10"x4" JUNCTION BOXES (J-BOX #1/J-BOX #2) ON THE WALL ABOVE PANELBOARDS 6" BELOW THE LAY-IN CEILING AND MOUNTED ADJACENT TO EACH. PROVIDE CONDUITS AND WIRING SHOWN IN DETAIL 8/E710. TEMS SHALL PROVIDE GRIDPOINT 3 PHASE METER AND TRANSFORMER WITHIN J-BOX #1 AND GRIDPOINT IOM/HUB WITHIN J-BOX #2. SEE GRIDPOINT INSTALLATION SHEET FOR DETAILS.
- PROVIDE HORIZONTAL SINGLE-GANG J-BOX BELOW FUTURE GRIDPOINT CONTROLLER LOCATION. PROVIDE CONDUITS AND WIRING AS SHOWN IN DETAIL 8/E710.
- INSTALL WIRED DOOR BUZZER AT 96" AFF. SEE ARCHITECTURAL DOOR EQUIPMENT FOR EQUIPMENT INFORMATION. CONNECT TO CIRCUIT SHOWN THROUGH THE TRANSFORMER FURNISHED WITH THE DOOR BUZZER. PROVIDE WIRING TO A BUTTON ADJACENT TO THE SERVICE DOOR AND CONNECT PER THE MANUFACTURER'S INSTALLATION INSTRUCTIONS.
- CONNECT BATHROOM SANITIZER TO CIRCUIT SHOWN SO THAT IT IS ENERGIZED AT ALL TIMES.
- PROVIDE POWER AND LOW VOLTAGE CONNECTIONS TO DISH SANITIZING MACHINE PER DETAIL 7/E710. CONNECT THE DETERGENT DISPENSER TO THE DISH MACHINE USING THE INCLUDED WIRING HARNESS PER THE MANUFACTURER'S INSTALLATION INSTRUCTIONS.
- PROVIDE RECEPTACLE FOR 2-DOOR AND/OR 1-DOOR REFRIGERATOR WITH GROUND PINS TOWARDS THE BOTTOM OF THE RECEPTACLE.
- PROVIDE ISLAND PREP TABLE FOOD WARMER RECEPTACLE WITH GROUND PIN TOWARDS THE BOTTOM OF THE RECEPTACLE. SEAL INTERIOR AND EXTERIOR OF CONDUITS THAT PASS THROUGH THE WALK-IN COOLER ENVELOPE PER THE NEC.
- INSTALL VEHICLE DETECTOR SYSTEM FURNISHED BY TLS SURFACE-MOUNTED ON WALL ABOVE CEILING IN ACCESSIBLE LOCATION CONNECT TO STROBE/CHIME AND DETECTOR LOOP PER THE MANUFACTURER'S INSTALLATION INSTRUCTIONS. MAKE FINAL ADJUSTMENTS TO LOOP SENSITIVITY PER THE MANUFACTURER'S INSTRUCTIONS. ONCE ALL COMPONENTS ARE INSTALLED AND OPERATIONAL THE CHIME/STROBE LIGHT SHOULD STAY ILLUMINATED AND THERE SHOULD BE A SINGLE CHIME WHEN A VEHICLE DRIVES OVER OR STOPS ON LOOP.
- PROVIDE 4" SQUARE J-BOX ON EXTERIOR WALL FOR MOUNTING OF EXTERIOR CAMERA. SEE ARCHITECTURAL ELEVATION FOR EXACT HEIGHT AND LOCATION. PROVIDE 3/4" CONDUIT WITH PULLSTRING FROM J-BOX TO ABOVE LAY-IN CEILING AREA IN KITCHEN. J-BOX SHALL NOT BE SURFACE MOUNTED. BASE OF CAMERA SHALL BE MOUNTED FLUSH TO EXTERIOR WALL FINISH.
- PROVIDE POWER CONNECTIONS FROM WALL TO PREP TABLE ELECTRICAL DEVICES USING LIQUIDTIGHT CONDUIT. PROVIDE DUPLEX RECEPTACLE IN J-BOX INTEGRAL TO PREP TABLE (OR UNDERCOUNTER REFRIGERATOR).
- PROVIDE PREP TABLE FOOD WARMER RECEPTACLE WITH GROUND PIN TOWARDS THE BOTTOM OF THE RECEPTACLE.



**POWER ROOF PLAN**  
1/8" = 1'-0"



**POWER FLOOR PLAN**  
1/4" = 1'-0"

FOR CONSTRUCTION

COPYRIGHT 2024  
 THIS DRAWING IS AN INSTRUMENT OF SERVICE AND AS SUCH REMAINS THE PROPERTY OF CHIPOTLE MEXICAN GRILL, INC.. PERMISSION FOR USE OF THIS DOCUMENT IS LIMITED AND CAN BE EXTENDED ONLY BY WRITTEN AGREEMENT WITH CHIPOTLE MEXICAN GRILL, INC..



CHIPOTLE MEXICAN GRILL, INC.  
 PO BOX 182566  
 COLUMBUS, OH 43218-2566  
 TELEPHONE: (614) 318-2400  
 INTERNET: WWW.CHIPOTLE.COM

STORE NO.: 4870  
 WALNUT HILLS, OH  
 1202 E. MCMILLAN  
 CINCINNATI, OH 45206

Issue Record:	PERMIT SET
11/03/2023	CONSTRUCTION SET
05/08/2024	

Revisions:	HEALTH COMMENTS
1 1/24/24	PLAN REVIEW COMMENTS
2 4/25/24	KITCHEN UPDATE
4 06/27/24	

Drawn: CJK  
 Checked: JEJ

Project No:  
 2301004

Contents:  
**ELECTRICAL POWER PLAN**

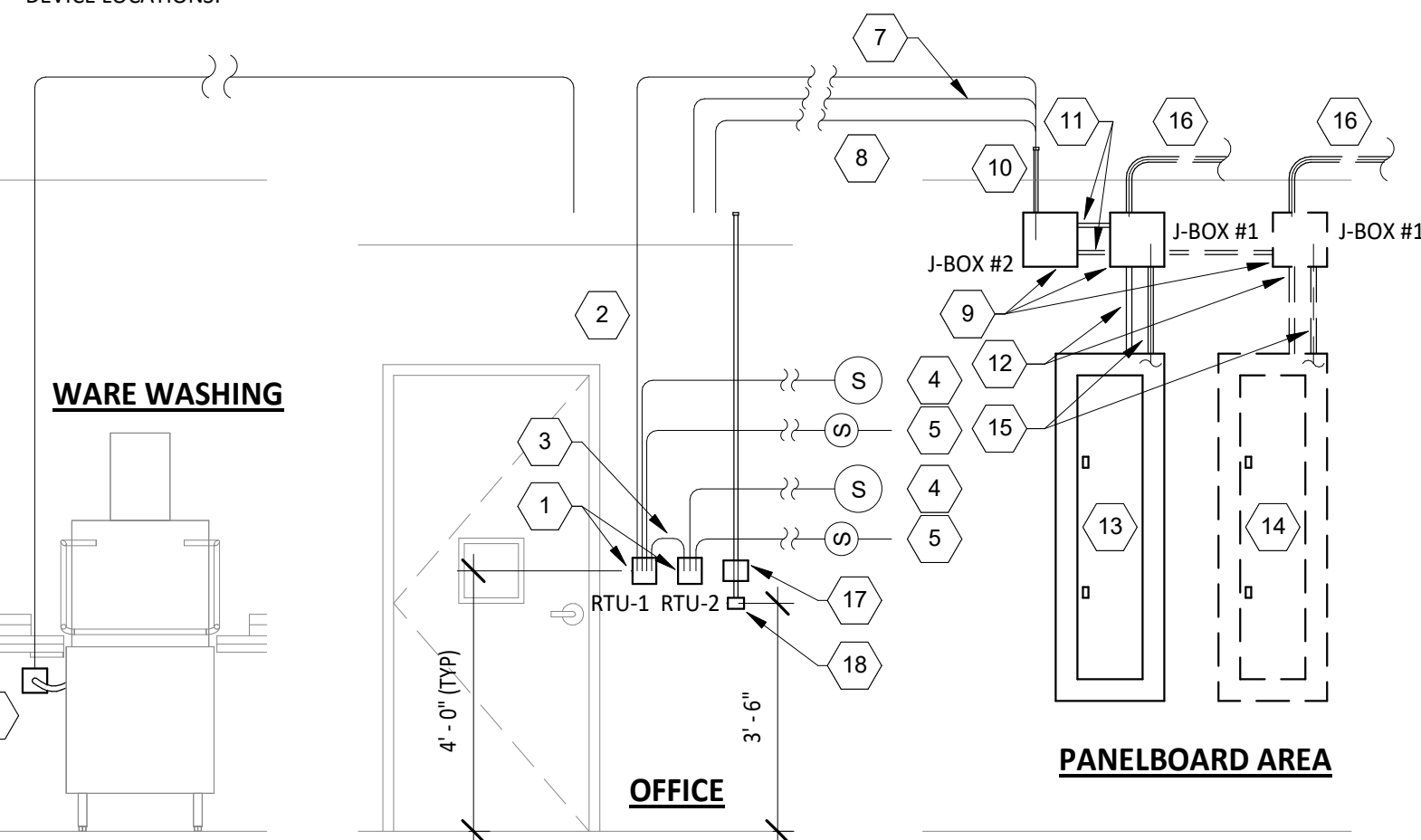


**GRIDPOINT DIAGRAM NOTES**

- INSTALL GRIDPOINT THERMOSTATS FURNISHED BY TEMS FOR RTU-1 AND RTU-2. PROVIDE THERMOSTAT WIRING FROM EACH THERMOSTAT TO THE CORRESPONDING ROOFTOP UNIT.
- PROVIDE CATSE CABLE FROM RTU-1 THERMOSTAT TO J-BOX #2 ABOVE ELECTRICAL PANELS (LEAVE 16" OF CABLE COILED UP INSIDE OF J-BOX #2 AND 16" BEHIND WALL OF THERMOSTAT FOR FINAL CONNECTION TO THE EMS SYSTEM BY THE TEMS) AND LABEL BOTH ENDS OF CABLE "TSTATS".
- PROVIDE CATSE CABLE(S) BETWEEN THERMOSTATS (LEAVE 16" OF CABLE BEHIND WALL OF EACH THERMOSTAT FOR FINAL CONNECTION BY THE TEMS) AND LABEL BOTH ENDS OF CABLE "TSTAT JUMPER". SEE GRIDPOINT INSTALLATION INSTRUCTIONS FOR TERMINATION INSTRUCTIONS.
- INSTALL GRIDPOINT ZONE SENSOR MODULES FURNISHED BY TEMS AS SHOWN ON HVAC FLOOR PLAN. PROVIDE 18G-24G SHIELDED TWISTED PAIR FROM ZSM TO CORRESPONDING THERMOSTAT T1 TERMINALS. SEE GRIDPOINT INSTALLATION INSTRUCTIONS FOR TERMINATION INSTRUCTIONS.
- INSTALL GRIDPOINT SUPPLY PROBE FURNISHED BY TEMS AS SHOWN ON HVAC FLOOR PLAN. PROVIDE 18G-24G SHIELDED TWISTED PAIR FROM SUPPLY PROBE TO CORRESPONDING THERMOSTAT T2 TERMINALS. SEE GRIDPOINT INSTALLATION INSTRUCTIONS FOR TERMINATION INSTRUCTIONS.
- PROVIDE 3/4" LIQUIDTIGHT CONDUIT FROM DISH SANITIZING MACHINE TO LOW-VOLTAGE JUNCTION BOX OR TRIM RING FLUSH MOUNTED TO WALL. PROVIDE CONTINUOUS (NOT SPLICED) CATSE CABLE FROM DISH SANITIZING MACHINE TO OFFICE (ABOVE LAY-IN CEILING) WITH 54" SLACK WITHIN THE DISH MACHINE AND 10' SLACK ABOVE THE LAY-IN CEILING. PROVIDE RJ-12 PLUG ON CABLE AT DISH MACHINE END WITH BLUE WIRE CONNECTED TO PIN 3 AND BLUE/WHITE WIRE CONNECTED TO PIN 4. LABEL CABLE ON BOTH ENDS WITH "DISHWASHER".
- PROVIDE CATS CABLE FROM J-BOX #2 TO OFFICE ABOVE LAY-IN CEILING AND LABEL "RS-485 COMMS" ON BOTH ENDS OF THE CABLE. LEAVE 10' OF SLACK CABLE ABOVE OFFICE CEILING AND 16" OF SLACK CABLE INSIDE OF J-BOX #2.
- PROVIDE CABLE (18-24AWG SHIELDED TWISTED PAIR) FROM J-BOX #2 TO OFFICE ABOVE LAY-IN CEILING AND LABEL "EMS POWER" ON BOTH ENDS OF THE CABLE. LEAVE 10' OF SLACK CABLE ABOVE OFFICE CEILING AND 16" OF SLACK CABLE INSIDE OF J-BOX #2.
- PROVIDE SURFACE MOUNT 10" X 10" X 4" NEMA 1 ENCLOSURES ABOVE PANELBOARDS AND 6" BELOW CEILING.
- PROVIDE 3/4" CONDUIT WITH INSULATING BUSHING ON END CONCEALED IN WALL FROM J-BOX #2 TO 6" ABOVE LAY-IN CEILING.
- PROVIDE 3/4" CONDUIT(S) FROM J-BOX #1 TO J-BOX #2.
- PROVIDE EMPTY 1" CONDUIT(S) FROM PANELBOARD(S) TO J-BOX #1 FOR FUTURE CT WIRING BY TEMS.
- FIRST PANELBOARD FED FROM ELECTRICAL SERVICE. PROVIDE WITH (1) 20A/3-POLE CIRCUIT BREAKER (FOR GRIDPOINT 3 PHASE METER). IF PANELBOARD HAS 120V CIRCUITS AVAILABLE THEN ALSO PROVIDE (1) 20/1-POLE CIRCUIT BREAKER (FOR GRIDPOINT TRANSFORMER).
- IF SPACE HAS MULTIPLE ELECTRICAL SERVICES THEN PROVIDE A "J-BOX #1" AND ASSOCIATED BREAKERS, CONDUITS, AND CONDUCTORS ON THE FIRST PANELBOARD FED FROM EACH ELECTRICAL SERVICE.
- FOR EACH ELECTRICAL SERVICE PROVIDE (1) SET OF [(4) #12, #12 G.] FROM 3-POLE GRIDPOINT CIRCUIT BREAKER AND, IF THE PANELBOARD HAS 120V CIRCUITS AVAILABLE, (1) SET OF [(2) #12, #12 G.] FROM 1-POLE GRIDPOINT CIRCUIT BREAKER IN 3/4" CONDUIT CONCEALED IN WALL TO J-BOX #1. TERMINATE IN J-BOX #1 WITH 16" SLACK FOR FINAL CONNECTION BY TEMS.
- IF THE PANELBOARD DOES NOT HAVE 120V CIRCUITS AVAILABLE PROVIDE A 1-POLE 120V 20A CIRCUIT BREAKER IN A PANEL WITH A 120V CIRCUIT AVAILABLE. PROVIDE (1) SET OF [(2) #12, #12 G.] FROM THE GRIDPOINT CIRCUIT BREAKER IN 3/4" CONDUIT CONCEALED IN WALL TO J-BOX #1. TERMINATE IN J-BOX #1 WITH 16" SLACK FOR FINAL CONNECTION BY TEMS.
- GRIDPOINT CONTROLLER PROVIDED BY TEMS
- PROVIDE HORIZONTAL SINGLE-GANG J-BOX BELOW FUTURE GRIDPOINT CONTROLLER LOCATION AS SHOWN. PROVIDE 3/4" CONDUIT WITH PULL STRING AND INSULATING BUSHING FROM J-BOX TO 6" ABOVE OFFICE LAY-IN CEILING.

NOTE:

ARRANGEMENT SHOWN IS DIAGRAMMATIC - SEE PLANS FOR ACTUAL DEVICE LOCATIONS.

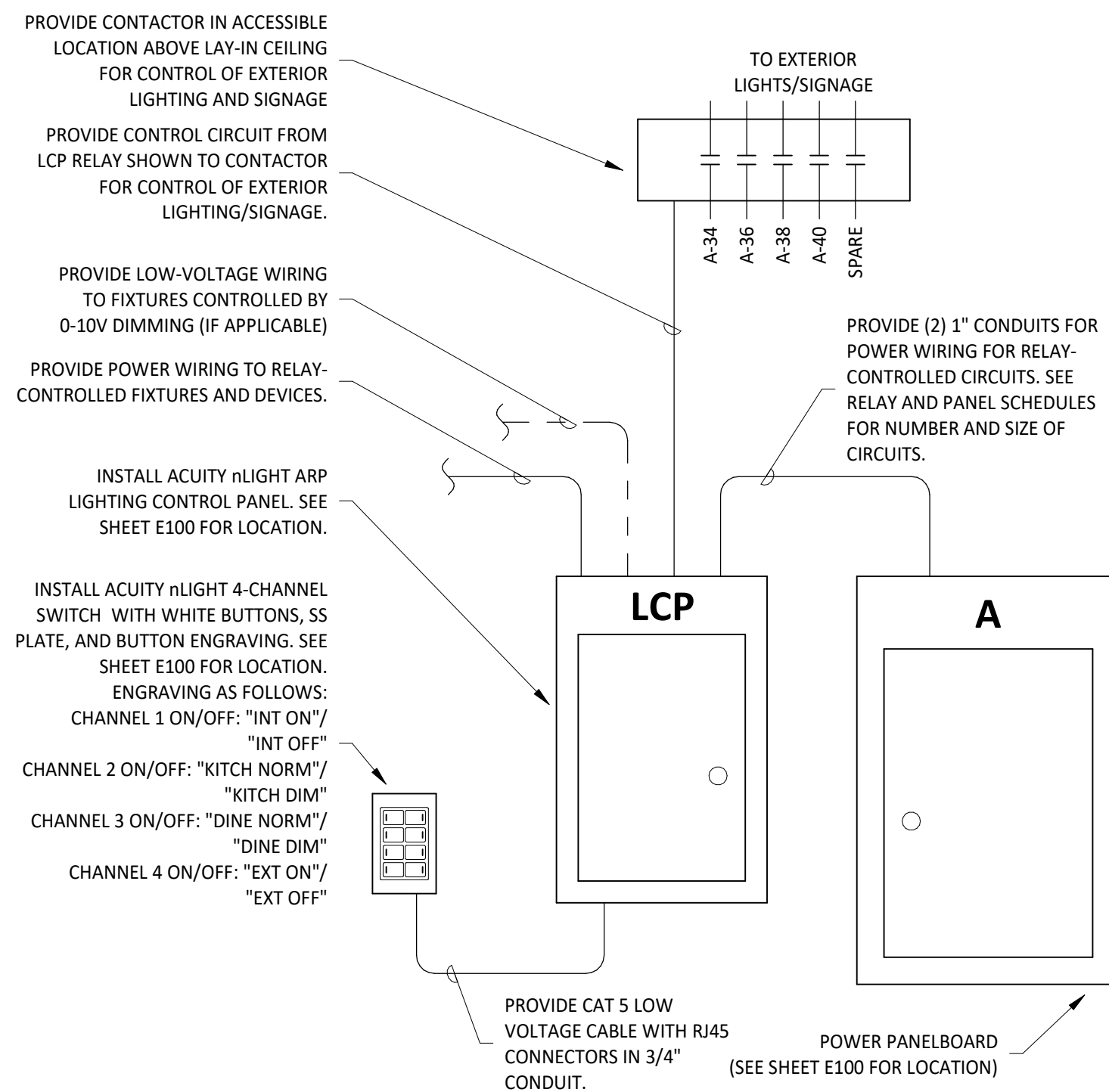


**GRIDPOINT WIRING DIAGRAM**

8 E710 N.T.S.

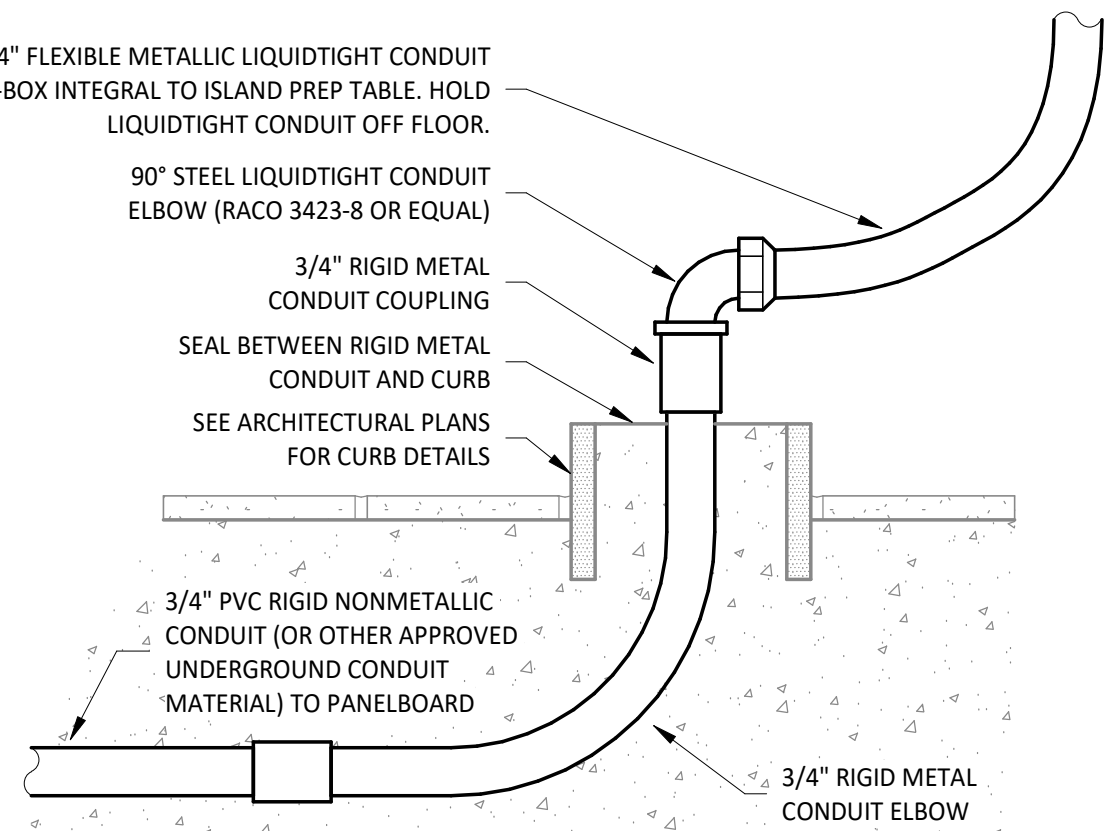
**SEQUENCE OF OPERATIONS**

- EMERGENCY LIGHT FIXTURES, EXIT SIGNS, LOCALLY-SWITCHED FIXTURES, AND FIXTURES DESIGNATED AS NIGHT LIGHTS ARE NOT CONTROLLED THROUGH THE RELAY PANEL.
- ALL TIMES NOTED SHALL BE LOCAL TIME AND SHALL AUTOMATICALLY ADJUST FOR DAYLIGHT SAVINGS TIME, IF APPLICABLE.
- ALL KITCHEN LIGHTING CIRCUITS AND RESTROOM EXHAUST FAN CIRCUIT (R1, R2, R7) SHALL BE ENERGIZED AT FULL POWER FROM 7:00AM UNTIL MIDNIGHT AND SHALL BE DE-ENERGIZED AT OTHER TIMES.
- ALL DINING ROOM LIGHTING CIRCUITS (R4, R5, R6) SHALL BE ENERGIZED FROM 10:00AM UNTIL MIDNIGHT AND SHALL BE DE-ENERGIZED AT OTHER TIMES.
- EXTERIOR LIGHTING/SIGNAGE RELAY (R8) SHALL BE ENERGIZED FROM ONE HOUR BEFORE SUNSET UNTIL ONE HOUR AFTER CLOSING AND SHALL BE DE-ENERGIZED AT OTHER TIMES.
- OVERRIDES: WHEN ONE OF THE OVERRIDE BUTTONS IS PRESSED THE SYSTEM WILL GO INTO OVERRIDE MODE FOR THE DURATION NOTED BELOW OR UNTIL THE NEXT SCHEDULED EVENT. FOLLOWING THIS PERIOD THE RELAYS WILL RETURN TO THE CURRENT SCHEDULED CONDITION. DURING THIS OVERRIDE TIME THE CORRESPONDING LAMP WILL ILLUMINATE ON THE OVERRIDE BUTTON.
  - INTERIOR (CHANNEL 1): WHEN THE INTERIOR OVERRIDE ON OR OFF BUTTON IS PRESSED (CHANNEL 1) RELAYS R1, R2, R4, R5, R6, AND R7 WILL BE ENERGIZED OR DE-ENERGIZED FOR A DURATION OF ONE (1) HOUR.
  - KITCHEN DIMMING (CHANNEL 2): WHEN THE KITCHEN NORMAL/DIM OVERRIDE ON OR OFF BUTTON IS PRESSED (CHANNEL 2) RELAY R2 WILL BE ENERGIZED OR DE-ENERGIZED FOR A DURATION OF ONE (1) HOUR.
  - DINING DIMMING (CHANNEL 3): WHEN THE DINING NORMAL/DIM OVERRIDE ON OR OFF BUTTON IS PRESSED (CHANNEL 3) RELAYS R5 AND R6 WILL BE ENERGIZED OR DE-ENERGIZED FOR A DURATION OF ONE (1) HOUR.
  - EXTERIOR (CHANNEL 4): WHEN THE EXTERIOR OVERRIDE ON OR OFF BUTTON IS PRESSED (CHANNEL 4) RELAY R8 WILL BE ENERGIZED OR DE-ENERGIZED FOR A DURATION OF ONE (1) HOUR.
- VERIFY THAT TIME, TIME ZONE, AND LONGITUDE/LATITUDE ARE SET CORRECTLY ON LCP. VERIFY WITH STORE OPERATIONS THAT THE ON/OFF TIMES ARE COMPATIBLE WITH THE STORE OPERATING HOURS PRIOR TO TURNOVER.



**INTERIOR LIGHTING CONTROL DIAGRAM**

6 E710 N.T.S.



**PEDESTAL OUTLET DETAIL**

2 E710 N.T.S.

ELECTRICAL CONNECTIONS SHALL BE ON THE OPPOSITE SIDE OF THE DISH MACHINE FROM THE 3-COMP SINK. IF THIS IS ON THE LEFT SIDE OF THE DISH MACHINE THEN LIQUID TIGHT CONDUIT SHALL BE ROUTED BEHIND THE DISH MACHINE TO THE ELECTRICAL CONNECTIONS ON THE RIGHT SIDE OF THE DISH MACHINE..

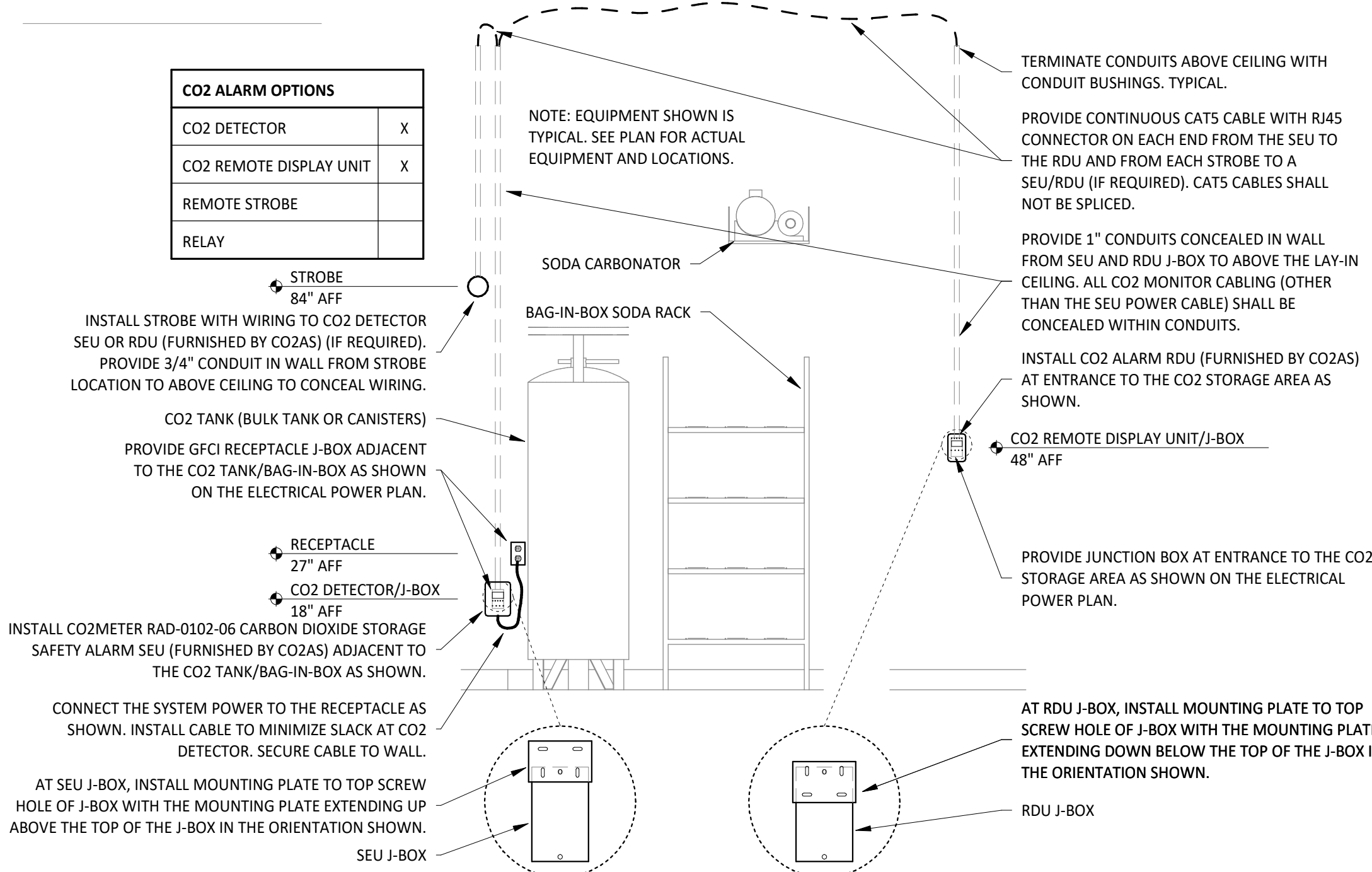
POWER FOR DISH SANITIZING MACHINE SHALL BE FED FROM A DEDICATED 2-POLE LOCKABLE CIRCUIT BREAKER. PROVIDE FINAL CONNECTION FROM J-BOX IN WALL TO DISH SANITIZING MACHINE USING LIQUIDTIGHT FLEXIBLE METAL CONDUIT.

PROVIDE CONDUITS AND WIRING FOR GRIDPOINT CONNECTION TO DSM AS SHOWN IN DETAIL 8/E710.

**DISH SANITIZING MACHINE ELECTRICAL DETAIL**

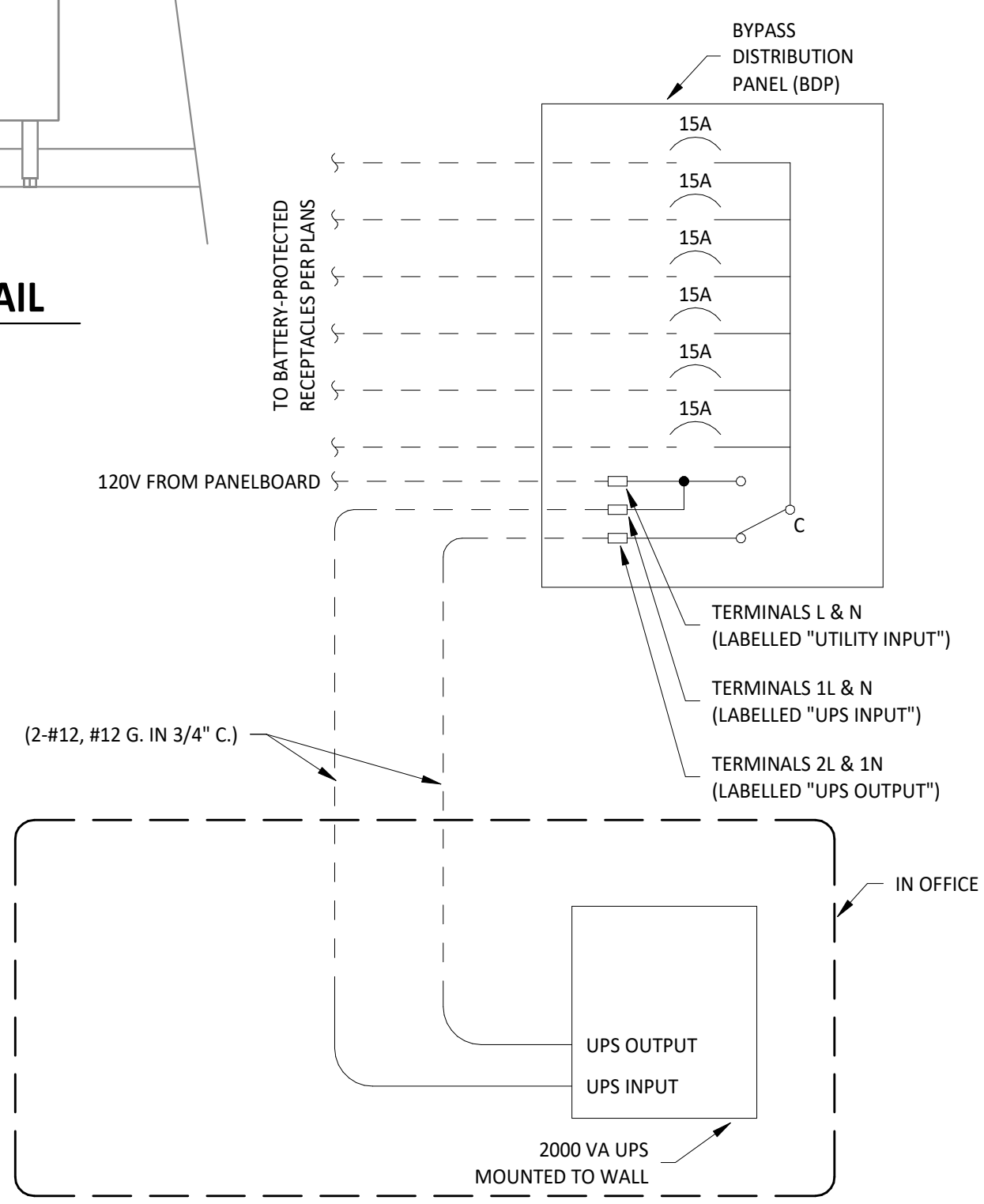
7 E710 N.T.S.

CO2 ALARM OPTIONS	
CO2 DETECTOR	X
CO2 REMOTE DISPLAY UNIT	X
REMOTE STROBE	
RELAY	



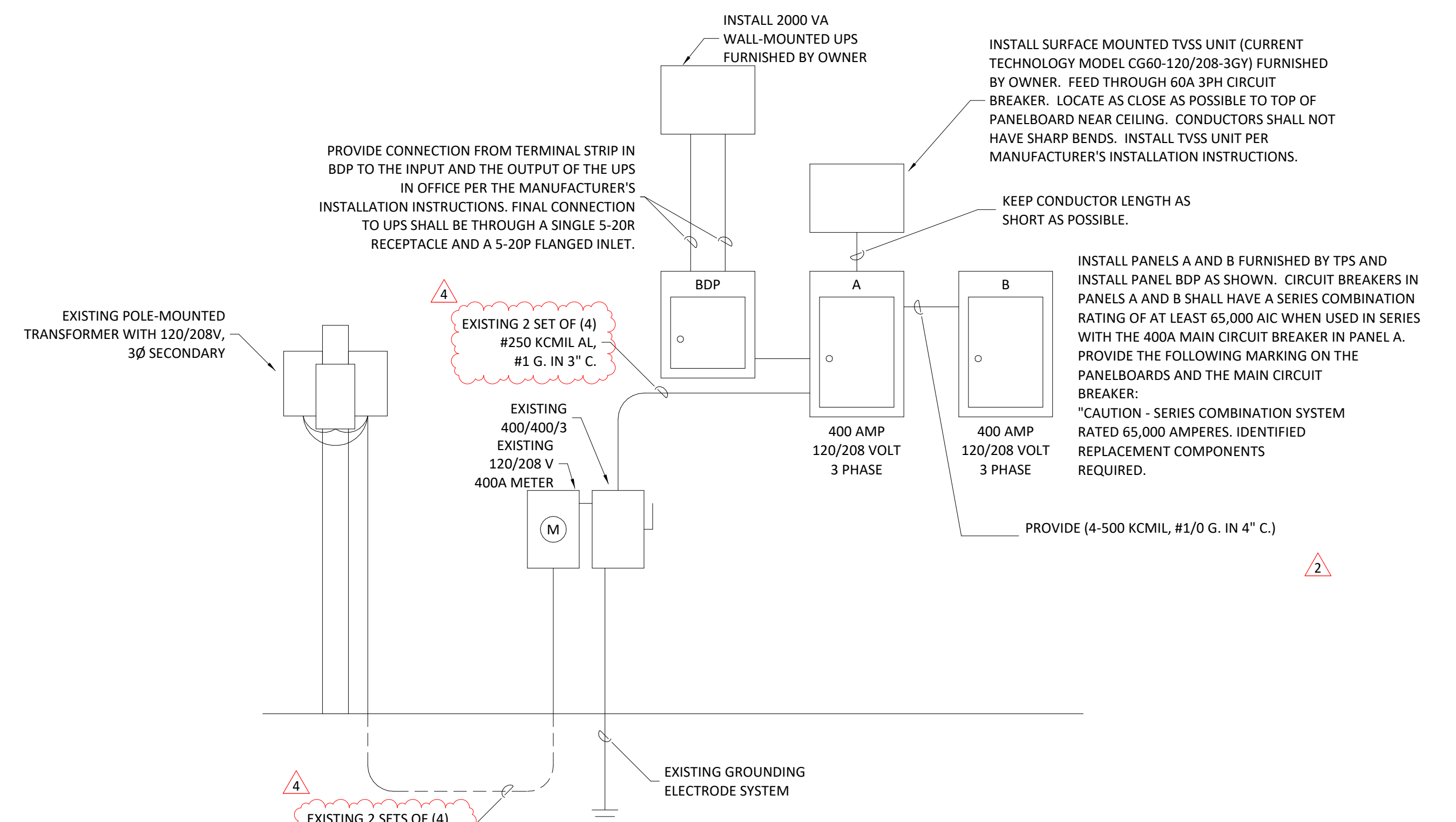
**CO2 ALARM DETAIL**

4 E710 N.T.S.



**BYPASS DISTRIBUTION PANEL WIRING DIAGRAM**

3 E710 N.T.S.



**MAIN DISTRIBUTION DIAGRAM**

1 E710 N.T.S.

Consultant:



4635 Trueman Blvd, Suite 250  
Hilliard, Ohio 43026  
Phone: (614) 751-9610  
Fax: (614) 552-5240  
Contact: Cliff Kigar  
(614) 328-2033  
ckigar@nationalengineering.com

FOR CONSTRUCTION

COPYRIGHT 2024  
THIS DRAWING IS AN INSTRUMENT OF SERVICE AND AS SUCH REMAINS THE PROPERTY OF CHIPOTLE MEXICAN GRILL, INC.. PERMISSION FOR USE OF THIS DOCUMENT IS LIMITED AND CAN BE EXTENDED ONLY BY WRITTEN AGREEMENT WITH CHIPOTLE MEXICAN GRILL, INC..



CHIPOTLE MEXICAN GRILL, INC.  
PO BOX 182566  
COLUMBUS, OH 43218-2566  
TELEPHONE: (614) 318-2400  
INTERNET: WWW.CHIPOTLE.COM

STORE NO.: 4870  
WALNUT HILLS, OH  
1202 E. MC MILLAN  
CINCINNATI, OH 45206

Issue Record:	PERMIT SET
11/03/2023	
05/08/2024	CONSTRUCTION SET

Revisions:	PLAN REVIEW COMMENTS
2 4/25/24	
4 06/27/24	KITCHEN UPDATE

Drawn: CJK  
Checked: JEJ

Project No:  
2301004

Contents:

ELECTRICAL DETAILS

E710