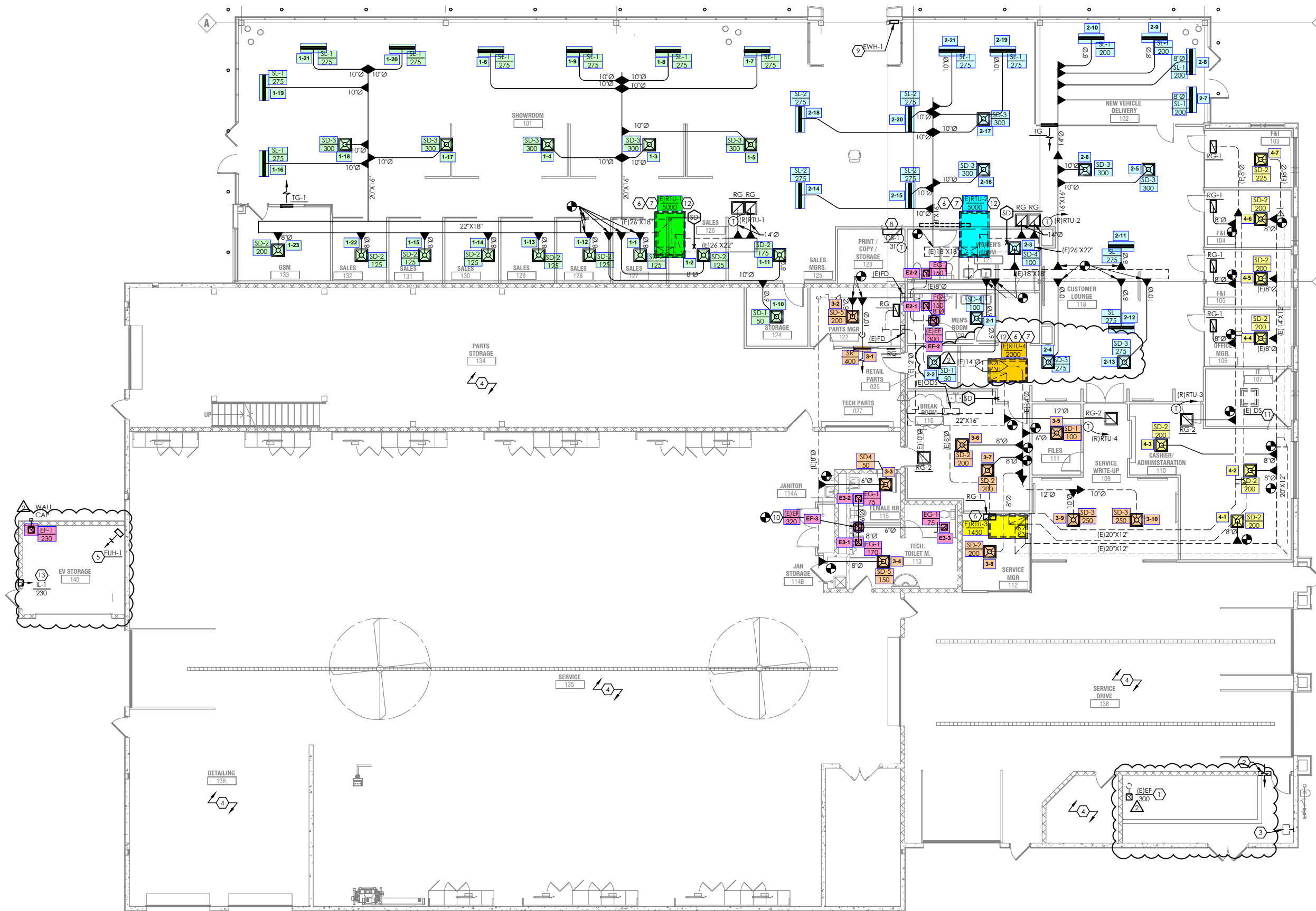


HVAC CODED NOTES

1. EXISTING EXHAUST FAN TO REMAIN.
2. EXISTING LOW SIDEWALL TRANSFER GRILL TO REMAIN. COORDINATE WITH OTHER TRADES FOR PROPER CLEARANCE.
3. EXISTING ELECTRIC UNIT HEATER TO REMAIN. COORDINATE WITH OTHER TRADES TO RETAIN PROPER CLEARANCE FOR SERVICE.
4. NO NEW WORK IN THIS AREA.
5. EUH-1: NEW WALL MOUNTED ELECTRIC UNIT HEATER, QMARK MUH-0571, 277V/1PH, 5.0KW. FURNISH WITH WALL MOUNTED THERMOSTAT.
6. EXISTING ROOFTOP UNIT TO REMAIN. INSPECT UNIT FOR PROPER OPERATION AND REPAIR AS NECESSARY FOR PROPER OPERATION.
7. EXISTING DUCT MOUNTED SMOKE DETECTOR TO REMAIN. INSPECT UNIT FOR PROPER OPERATION, AND FIELD VERIFY THAT IT IS WIRED TO SHUT DOWN UNIT UPON ACTIVATION.
8. DS-1: DUCTLESS SPLIT COOLING SYSTEM MOUNTED ABOVE DOORWAY WITH WALL MOUNTED WIRED THERMOSTAT. PROVIDE CONDENSATE PUMP AND ROUTE INSULATED CONDENSATE DRAIN LINE TO JANITOR'S SINK IN 114B AND TERMINATE WITH CODE REQUIRED AIR GAP. FIELD COORDINATE BEST ROUTE. INSTALL OUTDOOR UNIT (CU-1) ON ROOF ABOVE. ROUTE INSULATED REFRIGERANT LINES PER MANUFACTURER'S GUIDELINES. COORDINATE WITH OTHER TRADES.
9. EWH-1: NEW SURFACE MOUNTED ELECTRIC WALL HEATER, QMARK AWH-4407F, 277V/1PH, 4.0KW.
10. EXISTING ROOF MOUNTED EXHAUST FAN. INSPECT AND REPAIR AS REQUIRED FOR PROPER OPERATION. REWORK DUCTWORK AS SHOWN AND RE-BALANCE TO AIRFLOW SHOWN.
11. EXISTING DUCTLESS SPLIT SYSTEM IN I.T. ROOM TO REMAIN.
12. DEMO AIR DEVICES AND DUCTWORK FOR THIS EXISTING SYSTEM UNLESS NOTED AS EXISTING TO REMAIN. FIELD COORDINATE WITH EXISTING CONDITIONS AND OTHER TRADES.
13. INTAKE LOUVER: 12"X12" GREENHECK ESD-403 WITH SLEEVE THROUGH WALL.



Joseph Airport Hyundai Reno (Vandalla, OH)