

**SECTION 15121 - PACKAGED ROOFTOP AIR CONDITIONING UNITS**

**PART 1 - GENERAL**

**1.1 SECTION REQUIREMENTS**

- A. Submittals: Product Data and Shop Drawings.
- B. Comply with AHRI 135.
- C. EER: Equal to or greater than prescribed by the energy code adopted by the Authority Having Jurisdiction.
- D. Warranties: Supply a written warranty, signed by the manufacturer, agreeing to the repair or replacement of components that fail within a period of substantial completion.

**PART 2 - PRODUCTS**

**2.1 MANUFACTURERS, TO BE TYPICAL**

- A. Factory assembled and tested, consisting of compressor, condensers, evaporator coils, condenser and expansion fans, refrigeration and temperature controls, filters, and dampers.
  - 1. Refrigerant: R-410A. Schedule on drawing M010 for capacities, and manufacturers.
  - 2. Evaporator Fans: Built-in direct-drive forward curved centrifugal fan.
  - 3. Exhaust/Return Fans: Direct-drive, forward curved centrifugal or propeller.
  - 4. Condenser Fans: Direct-drive propeller.
  - 5. Full-pressure coils: Aluminum fins and copper coil.
  - 6. Compressor: Serviceable hermetic or fully hermetic, with safety controls, hot gas bypass, and thermal cut-off.
  - 7. Heat Exchangers: Factory installed. Additives are selected for single-point power-quality.
  - 8. Temperature Controls: Expansion Valve, 100% capacity.
  - 9. Inside Dampers: Proportional in-swing double-throw as called for in schedule on sheet M010.
  - 10. Operating Controls: Two-stage heating and two-stage cooling on units 7-1/2 tons and over.
  - 11. Roof curb.
  - 12. Control Wiring from "Unit to rooftop unit: Shall be 14ga / 7 conductor, rated for outdoor application.
  - 13. Connections from "unit to remote service shall be a minimum 1/2" condenser leaded, rated for outdoor application.

**PART 3 - EXECUTION**

**3.1 INSTALLATION**

- A. Install units level and square and trim as shown.
- B. Install ducts to connection on roof-mounting frames. Terminate ducts through roof structure.
- C. Connect with cooling systems and to grid.

END OF SECTION 15121

**SECTION 15100 - DUCTS AND ACCESSORIES**

**PART 1 - GENERAL**

**1.1 SECTION REQUIREMENTS**

- A. Submittals: Product Data for fire and smoke dampers.
- B. Comply with NFPA 90A for systems serving spaces more than 15,000 cu. ft. in volume or building Types III, IV, and V construction more than 3 stories in height.
- C. Comply with NFPA 90B for systems serving spaces in 1 or 2 family dwellings or serving spaces less than 20,000 cu. ft.
- D. Comply with NFPA 96, "Ventilation Control and the Protection of Commercial Cooking Operations," for kitchen hood ducts.
- E. Comply with UL 181 and UL 181A for ducts and closures.
- F. Testing, Adjusting, and Balancing Agency Qualifications: AABC certified (to be furnished by Tenant).

**PART 2 - PRODUCTS**

**2.1 DUCTS**

- A. Spiral Duct: Spiral Lock Seam, without insulation, SSP (galvanized steel), ASTM A453/50A.
  - 1. Size of Design Manufacturer: 16-gauge (SPF), minimum to the limit of design must be submitted for review.
  - 2. Fitting: Factory produced standing seam connection with internal sealing. Fitting with a major axis of 90° or smaller shall be 20 gauge. Fitting with a major axis of 135° shall be 18 gauge.
- B. Galvanized Metal Duct: Fabricate, Comply with SMANBA "HVAC Duct Construction Standards" for metal flex duct, including open-and-closed, or roll applications, and joint tapes and seals.
- C. Duct Liner: ASTM C 1501, Type I, with an impervious surface coated with a temperature resistant coating. Thickness: 1/2 inch. R value: 8.
  - 1. Adhesive: ASTM D261, Type 1.
  - 2. Mechanical Fasteners: Galvanized steel pin, length as required to penetrate three plus a 1/8 inch projection minimum into the construction.
- D. Joint and Seam Tape: Comply with UL 181A.
- E. Joint and Seam Sealer: Comply with UL 181A.
- F. Rectangular Metal Duct Fabrication: Comply with SMANBA "HVAC Duct Construction Standards" for metal flex duct, including open-and-closed, or roll applications, and joint tapes and seals.

**2.2 ACCESSORIES**

- A. Volume Control Damper: Factory fabricated volume control dampers, complete with required hardware and accessories. Single blade and multi-blade and multi-blade control dampers, rating, and suitable for horizontal or vertical installation.
- B. Fire Dampers: Factory fabricated fire dampers, complete with required hardware and accessories. UL labeled according to UL 181, Type 1 (Fire Damper).
- C. Flexible Connectors: Flame retardant or non-combustible fabric, coating, and adhesives complying with UL 181, Class 1.
- D. Flexible Ducts: Factory fabricated, insulated, round duct, with an outer jacket enclosing 2 inch thick, glass fiber insulation. Insulation is covered in a continuous inner liner.

**PART 3 - EXECUTION**

**3.1 INSTALLATION**

- A. Duct System Pressure Class: Construct and install duct system with 2 inch positive and negative duct pressure classifications.
- B. Connect ducts from view in finished and occupied spaces. Except where noted as exposed.
- C. Avoid using 90-degree electrical equipment splices and connections.
- D. Support and connect metal ducts according to SMANBA "HVAC Duct Construction Standards".
- E. Install duct accessories according to applicable sections of SMANBA Construction Standards.
- F. Install liner and/or insulation on ductwork per the manufacturer's instructions.
- G. Install volume control dampers in lined duct with methods to avoid damage to liner and to avoid access of duct liner.
- H. Install fire and smoke dampers according to manufacturer's UL approved instructions.
- I. Install hangers into the structure.
- J. Provide suitable tags for exposed ductwork.

**3.2 TESTING, ADJUSTING, AND BALANCING**

- A. The Tenant will supply an independent balance agent to balance and adjust the HVAC installation. The balance agent will be responsible for any repairs or leak repairs required.
- B. The GC is to have trained staff available during the balancing to correct issues noted by the balance agent.
- C. The balance agent is to balance airflow within all room systems, including minimum, fan coils, and terminals, to individual quantities +/- 10%. The total system system shall be balanced to a tolerance of 0-10% and the make-up air system to tolerance of +/- 10%.
- D. The balance agent is to supply a copy of the balance report to the Tenant, engineer and general contractor for review.

**END OF SECTION 15100**

**SECTION 15400 - DIFFUSERS, REGISTERS, AND GRILLS**

**PART 1 - GENERAL**

**1.1 SECTION REQUIREMENTS**

- A. Submittals: None.
- PART 2 - PRODUCTS**
- 2.1 FINISHED PRODUCTS**
- A. All air terminal devices.
    - 1. Refer to Grids, Registers, and Diffusers Schedule for equipment schedule.
    - 2. Manufacturer: As scheduled (NO SUBSTITUTIONS)
    - 3. Material: As scheduled.
    - 4. Finish: As scheduled.
    - 5. Mounting: As scheduled.

**PART 3 - EXECUTION**

**3.1 INSTALLATION**

- A. Coordinate location and installation with duct installation and installation of other ceiling and wall mounted items.
- B. Locate ceiling diffusers, registers, and grilles, as indicated on the architectural "reflected ceiling plan." Unless otherwise indicated, locate units in center of indicated ceiling panel.

END OF SECTION 15400

**HVAC GENERAL NOTES**

- A. GENERAL NOTES APPLY TO HVAC SYSTEMS.
- B. WORK SHALL COMPLY WITH STATE AND LOCAL CODE REQUIREMENTS AS APPROVED AND AMENDED BY THE AUTHORITY HAVING JURISDICTION, INCLUDING APPLICABLE SECTIONS OF BAMA, THE MECHANICAL CODE, AND ANY OTHER AMENDMENTS AT THE TIME OF THE PERIODIC PURCHASE PERMITS ASSOCIATED WITH THE WORK. OBTAIN ALL NECESSARY PERMITS FROM THE CITY OF BALTIMORE. REFER TO THE PERMITS AND LOCAL CODES.
- C. CONTRACTOR AND SUBCONTRACTORS SHALL REVIEW A COMPLETE SET OF THE CONSTRUCTION DOCUMENTS.
- D. COORDINATE WORK WITH THE WORK OF OTHER TRADES. EQUIPMENT FURNISHED BY OTHERS, REQUIREMENTS OF THE OWNER, AND OF THE SETTING CONDITIONS AT THE PROJECT SITE.
- E. DRAWINGS OF THE MECHANICAL WORK ARE ENGINEERED BY THE ARCHITECT. LOCATIONS, LAYOUTS, AND EQUIPMENT REQUIRED. THE DRAWINGS SHALL NOT BE SCALED FOR EXACT MEASUREMENTS. REFER TO SPECIFICATIONS FOR DIMENSIONS AND FINISHES. REFER TO AMPLIFIED NOTES FOR DIMENSION INSTALLATION DRAWINGS FOR EQUIPMENT CONNECTIONS AND INSTALLATION REQUIREMENTS. PROVIDE OUTDOOR, CONNECTION, OFFSETS, ACCESSORIES, AND PARTS NECESSARY FOR COMPLETE SYSTEM.
- F. DUCT DIMENSIONS ON PLANS INDICATE DIMENSIONS OF INTERIOR-FREE AREA.
- G. FORMERED CEILING DIFFUSERS SHALL BE A 1/4" UNLESS NOTED OTHERWISE.
- H. COORDINATE ROOF WORK WITH THE CONTRACTOR'S CONTRACTOR PRIOR TO CONSTRUCTION.
- I. UNLESS NOTED OTHERWISE, RECTANGULAR DUCT ELBOWS GREATER THAN 45° SHALL BE METED ELBOWS WITH DOUBLE THE CORNER RADIUS. RECTANGULAR DUCT ELBOWS 45° OR LESS SHALL BE RADIUS ELBOWS WITH AN INSIDE RADIUS OF AT LEAST 1/2 THE WIDTH OF THE DUCT.
- J. REDUCE AIR FLOWS WITH NEW, CLEAR MEASUREMENTS AT TERMINALS.
- K. THE TERM "TURNUP" MEANS SUPPLY AND DOWNFLOW TO THE PROJECTS. READY FOR THE DRAINING, UNPACKING, ASSEMBLY, INSTALLATION, AND STARTUP OPERATIONS. THE TERM "TYPICAL" INDICATES THE CREATION OF THE PROJECT SITE INCLUDING THE ACTUAL INSTALLATION, UNPACKING, ASSEMBLY, TESTING, AND STARTUP OPERATIONS. THE TERM "PROTECT" MEANS TO PROTECT AND INSTALL, COMPLETE, AND READY FOR THE TURNUP USE.
- L. PROVIDE LABELING DATA FOR ALL HVAC DRAWINGS USING INCREASED PRECISION. PROVIDE LABELING DATA FOR ALL HVAC DRAWINGS USING INCREASED PRECISION. PROVIDE LABELING DATA FOR ALL HVAC DRAWINGS USING INCREASED PRECISION. PROVIDE LABELING DATA FOR ALL HVAC DRAWINGS USING INCREASED PRECISION.

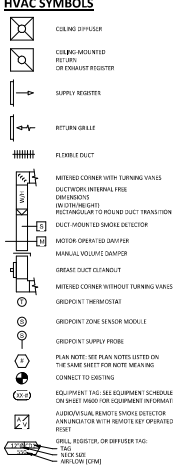
**HVAC MATERIAL SCHEDULE**

| APPLICATION                  | ALLOWABLE MATERIAL                                   |
|------------------------------|--|
| DUCT                         |  |
| CONDENSED, GENERAL DUCT      | RECT. OR ROUND AS SHOWN, UNINSULATED                 |
| CONDENSED, RETURN            | RECT. OR ROUND AS SHOWN, UNINSULATED                 |
| CONDENSED, SUPPLY            | RECT. OR ROUND AS SHOWN, UNINSULATED                 |
| CONDENSED, TYPE HOOD EXHAUST | RECTANGULAR (E.G. GALV. ALUMINUM) W/ WRAP OR UL 181A |
| EXPOSED GENERAL EXHAUST      | RECTANGULAR (E.G. GALV. ALUMINUM) W/ WRAP OR UL 181A |
| EXPOSED RETURN               | RECTANGULAR (E.G. GALV. ALUMINUM) W/ WRAP OR UL 181A |
| EXPOSED SUPPLY               | RECTANGULAR (E.G. GALV. ALUMINUM) W/ WRAP OR UL 181A |

**HVAC ABBREVIATIONS**

|      |   |
|------|---|
| TE   | CEILING                                       |
| AVU  | AVOID   |
| ADA  | AMERICAN DISABILITY ACT                       |
| AFF  | AWAY FROM FACE                                |
| AF   | AWAY FROM FACE                                |
| AFD  | AWAY FROM FACE                                |
| AHJ  | AUTHORITY HAVING JURISDICTION                 |
| REG  | REGULATORY                                    |
| BOH  | BACK OF HOUSE                                 |
| CLG  | CEILING                                       |
| CE   | CONNECT TO EXISTING                           |
| DN   | DOWN  |
| FAC  | FACILITY                                      |
| FIR  | FLOOR   |
| FIR  | FRONT OF HOUSE                                |
| GF   | GROUND FLOOR                                  |
| NFS  | NOT TO SCALE                                  |
| DIV  | DIVISION                                      |
| ODD  | ODD-SIZED DAMPER                              |
| TP   | TYPICAL                                       |
| UCS  | UNION-CRAFT                                   |
| UNO  | UNLESS NOTED OTHERWISE                        |
| VSD  | VARIABLE SPEED DRIVE                          |
| VSC  | VARIABLE SPEED CONTROLLER                     |
| W    | WITH  |
| W/C  | WITH COOLER                                   |
| COAS | COOL AIR SUPPLY                               |
| GE   | GENERAL CONTRACTOR                            |
| HS   | HVAC SYSTEM CONTRACTOR                        |
| RES  | RESIDENTIAL EQUIPMENT SUPPLIER                |
| LI   | LIQUIDATOR                                    |
| SPS  | SUPPLY SIDE SUPPLIER                          |
| T&B  | TIGHT AND BALANCE TIGHT                       |
| CC   | CONTRACTOR                                    |
| TC   | TECHNICAL CONTRACTOR                          |
| TD   | TECHNICAL DUCT CLEANING                       |
| TS   | TECHNICAL SERVICES CONTRACTOR SYSTEM SUPPLIER |
| TLS  | TECHNICAL SERVICES CONTRACTOR SUPPLIER        |
| TMB  | TECHNICAL SERVICES CONTRACTOR SUPPLIER        |
| TMS  | TECHNICAL SERVICES CONTRACTOR SUPPLIER        |
| TP   | TYPICAL                                       |
| TS   | TECHNICAL SERVICES CONTRACTOR SUPPLIER        |
| TSV  | TECHNICAL SERVICES CONTRACTOR SUPPLIER        |
| TUV  | TECHNICAL SERVICES CONTRACTOR SUPPLIER        |
| WCS  | WATER COOLER SUPPLIER                         |
| W/C  | WITH COOLER SUPPLIER                          |

**HVAC SYMBOLS**



**GF**

1250 Peachtree Street, NE  
Suite 2000 Atlanta, GA 30309  
1.404.951.4000

**CHIPOTLE MEXICAN GRILL**

1960 ST. GEORGES AVE. AVE. 07001

STORE NO.: 4929  
1960 ST. GEORGES AVE. AVE. 07001

REV. DATE DESCRIPTION  
3 06/26/2023 PERM'S SET  
3 06/26/2024 CONSTRUCTION SET

THE INFORMATION ON THIS DRAWING HAS BEEN CHECKED BY:

DATE: 06/26/2024

**HVAC SPECIFICATIONS**

**M010**



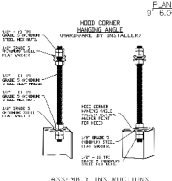
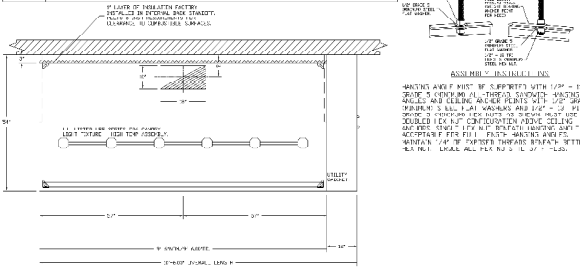
**HOOD SHOP DRAWING PRODUCED BY MANUFACTURER - FOR REFERENCE ONLY**

FOR QUESTIONS, CALL THE MANUFACTURER  
 800-451-7466  
 WWW.CAPTIVEAIRE.COM

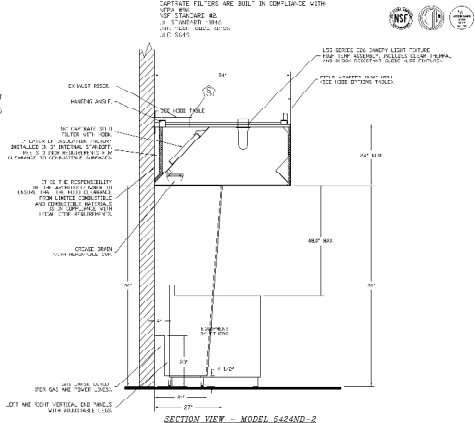
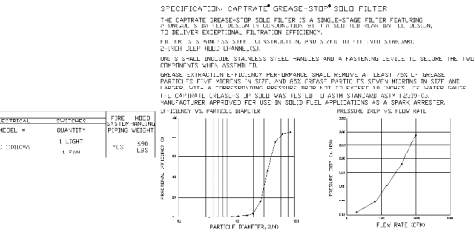
**PATENT NUMBERS**  
 US PATENT NO. 7,812,400  
 US PATENT NO. 7,812,401  
 US PATENT NO. 7,812,402

| HOOD INFORMATION |      | MODEL NUMBER |          | FINISH              |                     | LOADS  |        |
|------------------|------|--------------|----------|---------------------|---------------------|--------|--------|
| NO. 1            | TYPE | 30" WIDE     | 30" DEEP | 304 STAINLESS STEEL | 304 STAINLESS STEEL | 300 LB | 300 LB |

| HOOD INFORMATION |      | DIMENSIONS |          | MATERIALS           |                     | FINISH              |                     |
|------------------|------|------------|----------|---------------------|---------------------|---------------------|---------------------|
| NO. 1            | TYPE | 30" WIDE   | 30" DEEP | 304 STAINLESS STEEL | 304 STAINLESS STEEL | 304 STAINLESS STEEL | 304 STAINLESS STEEL |



HOOD CORNER HOODING ASSEMBLY  
 HOOD CORNER HOODING ASSEMBLY  
 HOOD CORNER HOODING ASSEMBLY



| FAN SYSTEM INFORMATION - J00#891183 |      | FLOW |      | PRESSURE |      |
|-------------------------------------|------|------|------|----------|------|
| TYPE                                | TYPE | TYPE | TYPE | TYPE     | TYPE |

**REVISIONS**

| NO. | DATE       | DESCRIPTION      |
|-----|------------|------------------|
| 1   | 06/24/2023 | PERMIT SET       |
| 2   | 07/26/2024 | REVISION 1       |
| 3   | 02/04/2025 | CONSTRUCTION SET |

**CAPTIVEAIRE**

DATE: 6/26/2023  
 DWG#: 4571183  
 SCALE: 3/4" = 1'-0"  
 MASTER DRAWING  
 SHEET NO. 1

**GF**  
 www.geostarfire.com  
 1320 Peachtree Street, NE  
 Suite 2000 Atlanta, GA 30309  
 1.404.951.4000

**CHIPOTLE MEXICAN GRILL**  
 1560 ST. GEORGES AVE. AVE. LEVEL, NJ 07001

STORE NO.: 4929  
 1560 ST. GEORGES AVE. AVE. LEVEL, NJ 07001

DATE: 6/26/2023  
 DWG#: 4571183  
 SCALE: 3/4" = 1'-0"  
 MASTER DRAWING  
 SHEET NO. 1

**HOOD SHOP DRAWING PRODUCED BY  
MANUFACTURER - FOR REFERENCE ONLY**

**EVALUATOR FAN INFORMATION - TOP HOOD ONLY**

| FAN UNIT | TAG  | QTY | FAN UNIT MODEL # | MANUFACTURER | CFM | ESP  | SPM | WHEEL | HP  | PHASE | VOLT | F.L.A. | WARRANTY | WARRANTY | WARRANTY |   |
|----------|------|-----|------------------|--------------|-----|------|-----|-------|-----|-------|------|--------|----------|----------|----------|---|
| 1        | EF-1 | 1   | 800NFA           | CAPTIVEAIRE  | 800 | 1.20 | 487 | 1/2"  | 1/2 | 115   | 115  | 1.6    | 60       | 5        | 5        | 5 |
| 2        | EF-2 | 1   | 800NFA           | CAPTIVEAIRE  | 800 | 1.20 | 487 | 1/2"  | 1/2 | 115   | 115  | 1.6    | 60       | 5        | 5        | 5 |

**FAN OPTIONS:**

| UNIT | TAG  | QTY | DESCRIPTION  |
|------|------|-----|--|
| 1    | EF-1 | 1   | 800NFA<br>FAN UNIT MODEL # FROM THE FAN BASE<br>FAN UNIT MODEL # FROM THE FAN BASE<br>FAN UNIT MODEL # FROM THE FAN BASE |
| 2    | EF-2 | 1   | 800NFA<br>FAN UNIT MODEL # FROM THE FAN BASE<br>FAN UNIT MODEL # FROM THE FAN BASE<br>FAN UNIT MODEL # FROM THE FAN BASE |

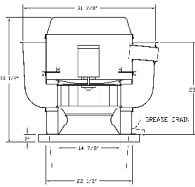
**FAN ACCESSORIES:**

| FAN UNIT | TAG  | QTY | DESCRIPTION  |
|----------|------|-----|--|
| 1        | EF-1 | 1   | 800NFA<br>FAN UNIT MODEL # FROM THE FAN BASE<br>FAN UNIT MODEL # FROM THE FAN BASE |
| 2        | EF-2 | 1   | 800NFA<br>FAN UNIT MODEL # FROM THE FAN BASE<br>FAN UNIT MODEL # FROM THE FAN BASE |

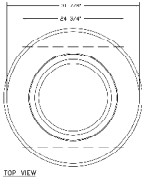
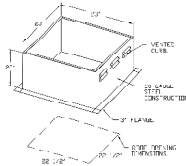
**ORDER ASSEMBLIES:**

| NO. | QTY | TAG  | WEIGHT | ITEM | SIZE  |
|-----|-----|------|--------|------|---|
| 1   | 1   | EF-1 | 30.85  | C, R | 23.00" X 23.00" X 20.00" ALUM. JUNKIE HOOD - VARIABLE |
| 2   | 1   | EF-2 | 31.85  | C, R | 17.00" X 17.00" X 20.00" ALUM. JUNKIE HOOD - VARIABLE |

FIG. 1 - HOOD ASSEMBLY - FRONT VIEW (TOP)



- FEATURES:**
- SELECT HOOD CONSTRUCTION AND MATERIALS
  - HOOD MATERIALS
  - RESTRAINT HOOD
  - 1/2\"/>
- GENERAL INFORMATION:**
- HOOD ASSEMBLY ASSEMBLY
- GENERAL INFORMATION:**
- HOOD ASSEMBLY ASSEMBLY



TOP VIEW

REVISIONS

**CAPTIVEAIRE**  
HighSpeed Group

DATE: 4/26/2023  
DWG.#: 2971893  
DRAWN BY: 40  
SCALE: 3/4\"/>

SHEET NO. 1

**GF**  
www.greenturfinc.com  
1320 Peachtree Street, NE  
Suite 2000 Atlanta, GA 30309  
1.404.951.4000

**CHIPOTLE MEXICAN GRILL**

1560 ST. GEORGES AVE. AVEREL, NJ 07001

| REV. | DATE       | DESCRIPTION      |
|------|------------|------------------|
| 1    | 04/26/2023 | PERMITS SET      |
| 2    | 07/26/2023 | REVISION 2       |
| 3    | 08/04/2023 | CONSTRUCTION SET |

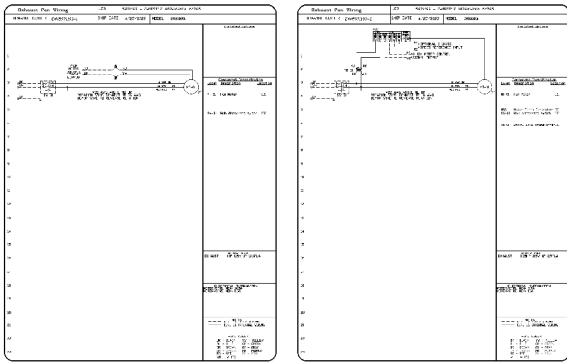
THE INFORMATION CONTAINED IN THIS DRAWING IS THE PROPERTY OF CAPTIVEAIRE. IT IS TO BE USED ONLY FOR THE PROJECT AND SITE SPECIFICALLY IDENTIFIED HEREIN. CAPTIVEAIRE SHALL BE RESPONSIBLE FOR THE ACCURACY OF THE INFORMATION CONTAINED HEREIN.

**CAPTIVEAIRE SHOP DRAWINGS**

**M401**



**HOOD SHOP DRAWING PRODUCED BY  
MANUFACTURER - FOR REFERENCE ONLY**



| REVISIONS |             |
|-----------|-------------|
| NO.       | DESCRIPTION |
|           |             |
|           |             |
|           |             |



C-IP2-E MISHAWAKA #4765  
MISHAWAKA, IN, 45544

DATE: 4/25/2023  
DWG.#: 2512353  
DRAWN BY: JLD  
SCALE: 3/4" = 1'-0"  
MASTER DRAWING

SHEET NO. 4

GF  
www.greenturfinc.com  
1220 Peachtree Street, NE  
Suite 2000 Atlanta, GA, 30309  
T: 404 951 4000

CHIPOTLE MEXICAN GRILL  
1560 ST. GEORGES AVE. AVENEL, NJ, 07001

STORE NO.: 4929  
1560 ST. GEORGES AVE. AVENEL, NJ, 07001

| REV. | DATE       | DESCRIPTION      |
|------|------------|------------------|
| 1    | 04/25/2023 | PERMITS SET      |
| 2    | 01/26/2024 | REVISION 1       |
| 3    | 02/04/2024 | CONSTRUCTION SET |

THE INFORMATION CONTAINED IN THIS DRAWING IS THE PROPERTY OF CAPTIVEAIRE. IT IS TO BE USED ONLY FOR THE PROJECT AND SITE SPECIFICALLY IDENTIFIED HEREIN. CAPTIVEAIRE SHALL BE RESPONSIBLE FOR THE ACCURACY OF THE INFORMATION CONTAINED HEREIN.

ALL PROFESSIONAL ENGINEERS (P.E.'S) REGISTERED IN THE STATE OF INDIANA.

Project: 2512353  
Drawing: BS

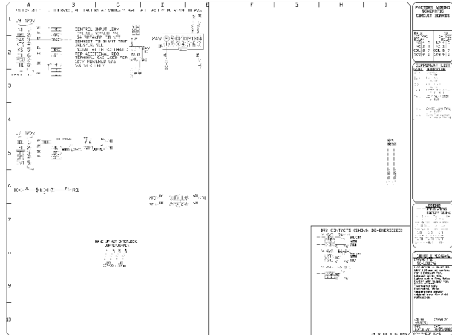
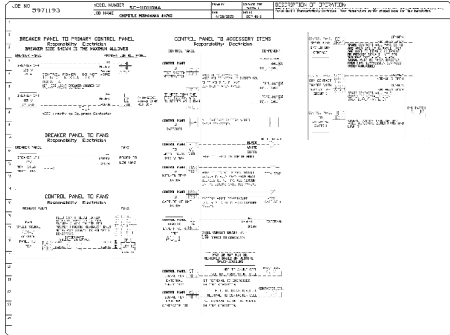
Project: 202303020

Location: CAPTIVEAIRE SHOP DRAWINGS

M403 <sup>Δ</sup>

**HOOD SHOP DRAWING PRODUCED BY  
MANUFACTURER - FOR REFERENCE ONLY**

| NO | PKG # | PACKAGE # | SECTION  | EXTENT  | OPTION | DATE | BY | CHKD |
|----|-------|-----------|----------|---------|--------|------|----|------|
| 1  |       |           | PLUMBING | 1 LIGHT |        |      |    |      |



| NO | DATE | DESCRIPTION |
|----|------|-------------|
| 1  |      |             |

**CAPTIVE WIRE**  
MECHANICAL GROUP  
1000 EAST 10TH AVENUE, SUITE 100, DENVER, CO 80202  
TEL: 303.733.1111

DATE: 4/28/2023  
DWG. #: 507193  
DRAWN BY: JHD 40  
SCALE: 3/4" = 1'-0"  
MASTER DRAWING

SHEET NO. 5



STORE NO.: 4929  
1560 ST. GEORGES  
AVE. AVENEL,  
NJ, 07001

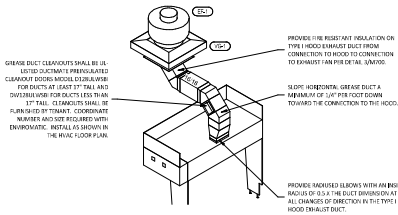
| REV. | DATE       | DESCRIPTION      |
|------|------------|------------------|
| 1    | 04/28/2023 | PERMITS SET      |
| 2    | 05/17/2024 | REVISION 2       |
| 3    | 05/24/2024 | CONSTRUCTION SET |

THE INFORMATION CONTAINED IN THIS DRAWING IS THE PROPERTY OF CAPTIVE WIRE. ALL PROFESSIONAL ENGINEERS (P.E.'S) MUST REGISTERED. SEE PLAN FOR MORE INFORMATION.

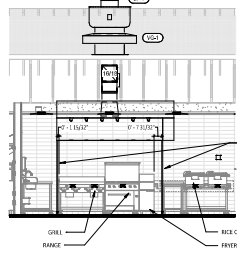
Project: 20303020  
Client: CAPTIVE WIRE SHOP DRAWINGS

M404

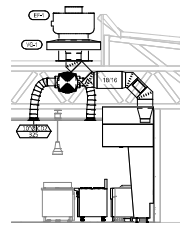




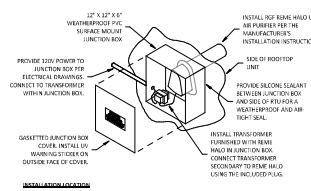
**HOOD EXHAUST ISOMETRIC**  
NOT TO SCALE



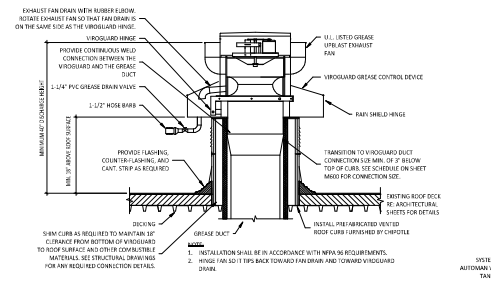
**HOOD ELEVATION**  
NOT TO SCALE



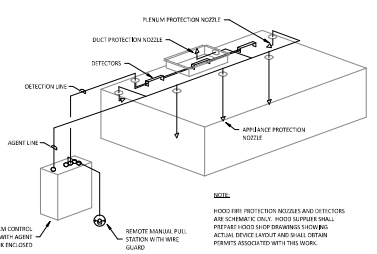
**DUCT SECTION AT HOOD**  
NOT TO SCALE



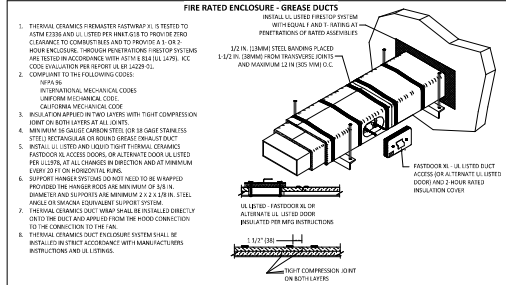
**UV AIR PURIFIER INSTALLATION**  
NOT TO SCALE



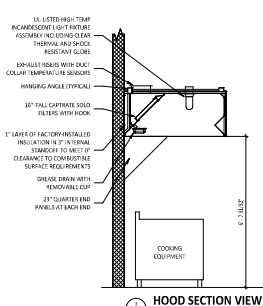
**GREASE EXHAUST FAN**  
NOT TO SCALE



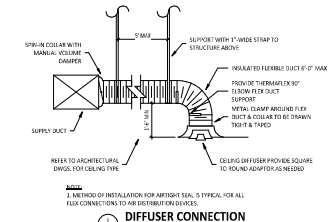
**FIRE SUPPRESSION SYSTEM SCHEMATIC**  
NOT TO SCALE



**FIREMASTER DUCT WRAP - UL HNKT-G18**  
NOT TO SCALE



**HOOD SECTION VIEW**  
NOT TO SCALE



**DIFFUSER CONNECTION**  
NOT TO SCALE

**GF**  
www.greenturf.com  
1320 Peachtree Street, NE  
Suite 2000 Atlanta, GA 30309  
T. 404.951.4000

CHIPOTLE MEXICAN GRILL  
1650 ST. GEORGES AVE. AVENEL, NJ 07001

STORE NO.: 4929  
1650 ST. GEORGES AVE. AVENEL, NJ 07001

DATE: 08/24/2023  
DESCRIPTION: PERMITS SET  
CONSTRUCTION SET

DATE: 08/24/2023  
DESCRIPTION: PERMITS SET  
CONSTRUCTION SET

**M700**



**PLUMBING SUPPLY PLAN NOTES**

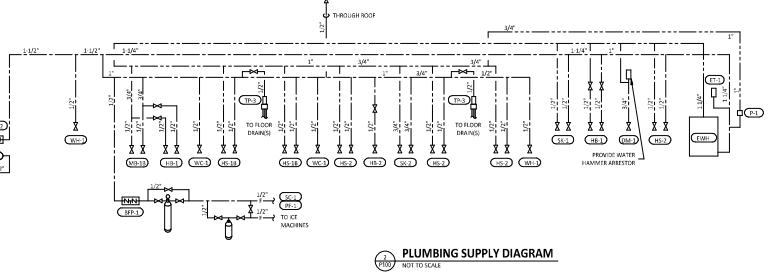
- SEE CIVIL/MECHANICAL PLAN FOR CONNECTION OF 1.13" DOMESTIC WATER SERVICE.
- PROVIDE 1/2" FILLER WATER TO THE BASIN IN EACH SINK/COMPONENT AT 30" AFF. SINK/COMPONENT SHALL HAVE AN INTEGRAL ASSE.
- 30" SINK/COMPONENT SHALL BE INSTALLED AS SHOWN IN DETAIL 147000.
- PROVIDE WATER FILTERS INDICATED TO SHALL PER DETAIL 147000. PROVIDE 1/2" PVP FREE FIBER FILTERS TO CE MAKER AND SINK/COMPONENT AS SHOWN.
- PROVIDE 1/2" FILLS/BACK TO FLOOR IN TO THE CE MAKER AT 30" AFF. PROVIDE 316 STAINLESS STEEL LEVEL-BRAID WASHING MACHINE WATER CONNECTOR WITH MINIMUM 0.67" ID BRASS/STAMP 1.13" DIA/1" OR EQUAL FOR FINAL CONNECTION TO CE MAKER.
- PROVIDE DOMESTIC WATER ROUGH-IN FOR THE HOT WATER FAUCET AT 30" AFF. PROVIDE DOMESTIC WATER ROUGH-IN FOR THE CHEMICAL DRAINER FAUCET AT 30" AFF. SILENTLY ABOVE THE HOT WATER FAUCET. SEE ARCHITECTURAL ELEVATION FOR ADDITIONAL INFORMATION.
- PROVIDE 1/2" DOMESTIC HOT AND COLD WATER ROUGH-IN FOR THE PREP SINK (D/C) FAUCET AT 30" AFF TO ALLOW FOR THE VICTORY WASH CHEMICAL DRAIN TO BE INSTALLED DIRECTLY BELOW THE PREP SINK BRASS/STAMP CONNECTION TO FREE C/W FAUCET USING 1/2" BRACED STAINLESS STEEL WATER FILTER CONNECTION HOSE.
- PROVIDE 1/2" HOT WATER TO THE DISH WASHING MACHINE. BRASS/STAMP CONNECTION HOSE FURNISHED WITH DISH MACHINE. PROVIDE WATER HAMMER ARRESTOR ON HOT WATER LINE. PROVIDE AN ACCESSIBLE SHUT-OFF VALVE BEYOND THE DISH MACHINE AND INSTALL THE STRAINER FURNISHED WITH THE DISH MACHINE IN ACCESSIBLE LOCATION AT THE CONNECTION TO THE UNIT.
- PROVIDE ROOF PENETRATION WITH BOTTOM OF NOZZLE INSTALLED 3/4" ABOVE THE BOTTOM OF ROOF JOCK. PROVIDE ACCESSIBLE ISOLATION VALVE IN UTILITY SUPPLY TO DISH MACHINE. SUPPORT HOOD VENTING TO THE MANUFACTURER'S RECOMMENDED VENTILATION.
- PROVIDE 1/2" DOMESTIC WATER ROUGH-IN FOR THE SPEEDY HOT WATER FAUCET (D/C) AT 30" AFF. SEE ARCHITECTURAL ELEVATION FOR DETAIL.
- PROVIDE WATER SERVICE ENTRY PER DETAIL 147000.
- PROVIDE DOMESTIC WATER ROUGH-IN FOR THE CHEMICAL DRAINER FAUCET (D/C) AT 30" AFF. SEE ARCHITECTURAL ELEVATION FOR ADDITIONAL INFORMATION.
- PROVIDE DOMESTIC WATER ROUGH-IN FOR THE VICTORY WASH CHEMICAL DRAIN (D/C) AT 30" AFF. SEE ARCHITECTURAL ELEVATION FOR ADDITIONAL INFORMATION.
- PROVIDE ROUGH-IN TO RESTROOM SINKS AS SHOWN IN DETAIL 147000.

**PLUMBING SUPPLY PLAN NOTES**

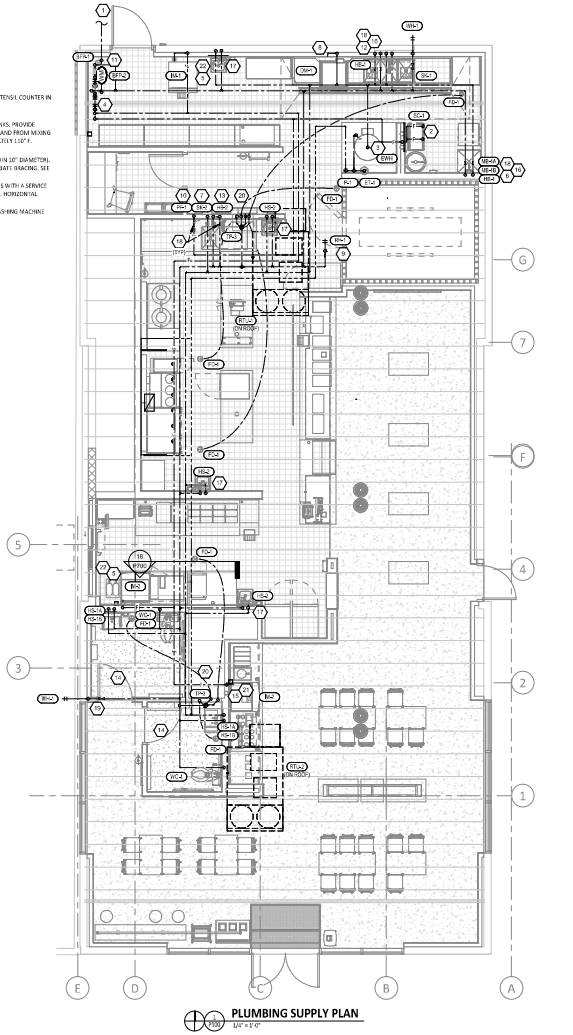
- INSTALL HOT WATER IC MAKER WATERER PER DETAIL 147000 PER MANUFACTURER'S INSTALLATION INSTRUCTIONS. LOCATE 1/4" BORE/0.40" UTENSIL COUNTER IN A LOCATION THAT DOES NOT INTERFERE WITH THE ROLLING BACK BELOW THE UTENSIL COUNTER.
- CONNECT CHEMICAL DRAINER TO H.S. CHEMICAL DRAINER SHALL BE INSTALLED AS SHOWN IN DETAIL 147000.
- PROVIDE ASSE 1/2" (20) POINT-OF-USE THERMOSTATIC MIXING VALVE. WATER SERVICE ON WATER SUPPLY TO KITCHEN HAND SINKS. PROVIDE 1/2" ASSE STOP VALVE ON WATER SUPPLY TO WALL AND FREE FLOOR CONNECTION FROM ASSE STOP TO MIXING VALVE AND PROVIDE MIXING VALVE TO FAUCET USING 1/2" (20) POINT-OF-USE THERMOSTATIC MIXING VALVE. PROVIDE 1/2" (20) POINT-OF-USE THERMOSTATIC MIXING VALVE FOR A DISCHARGE TEMPERATURE OF APPROXIMATELY 120° F.
- PROVIDE ACCESSIBLE VALVE IN UTILITY SPACE TO DISH MACHINE.
- PENETRATIONS THROUGH SHEAR WALL SHALL BE LIMITED TO 1/2" DIAMETER OR A GROUP OF PENETRATIONS ALL CONTAINED WITHIN 1/2" DIAMETER. PENETRATIONS THROUGH GROUPS OF PENETRATIONS ARE REQUIRED TO BE COORDINATED WITH STRUCTURAL ENGINEER FOR APPROPRIATE BRACING. SEE STRUCTURAL DRAWINGS FOR PENETRATION LOCATION.
- PROVIDE ACCESSIBLE TRAP PUMP AND/OR LAY IN CEILING AS SHOWN. INSTALL PER MANUFACTURER'S INSTALLATION INSTRUCTIONS WITH A SERVICE VALVE AT THE TRAP PUMP UNIT. PROVIDE 1/2" DISTRIBUTION PRESS TO FLOOR DRAIN TRAP PUMP CONNECTIONS IN ROOM. MINIMUM DISTRIBUTION PRESS SHALL HAVE CONTROLS 6" OFF TO THE FLOOR FINISH.
- PROVIDE 1/2" FILLER WATER ROUGH-IN TO THE ICE MAKER AT 30" AFF. PROVIDE 1/2" LONG STAINLESS STEEL LEVEL-BRAID WASHING MACHINE WATER CONNECTOR WITH MINIMUM 0.67" ID BRASS/STAMP 1.13" DIA/1" OR EQUAL FOR FINAL CONNECTION TO ICE MAKER.
- INSTALL HOT WATER IC MAKER WATERER PER DETAIL 147000 PER MANUFACTURER'S INSTALLATION INSTRUCTIONS.

**PLUMBING FIXTURE SUPPLY CONNECTIONS.**

| TAG         | DESCRIPTION                             | CONNECTION SIZE |       | ROUGH-IN TYPE | WELLS |      | TOTAL COUNT | TOTAL WSFU |
|-------------|---|-----------------|-------|---------------|-------|------|-------------|------------|
|             |   | CW              | HW    |               | CW    | HW   |             |            |
| BP-1        | BPZ BACKFLOW PREVENTER                  | 1.125"          |       | DIRECT        | 0     | 0    | 0           | 0          |
| BP-2        | BPZ BACKFLOW PREVENTER                  | 1.125"          |       | DIRECT        | 0     | 0    | 0           | 0          |
| OS-1        | OSZ HANDLING EQUIPMENT (WASHING OUTLET) | 0.75"           | 0.75" | ANGLE 1/2"    | 0     | 0    | 0           | 0          |
| OS-2        | OSZ HANDLING EQUIPMENT (WASHING OUTLET) | 0.75"           | 0.75" | DIRECT        | 0     | 0    | 0           | 0          |
| HS-1        | CHEMICAL DRAINER HOSE HB                | 1/2"            | 1/2"  | MP            | 2.25  | 2.25 | 1           | 2          |
| HS-2        | CHEMICAL DRAINER HOSE HB                | 1/2"            | 1/2"  | MP            | 1.13  | 1.13 | 1           | 1.13       |
| HS-3        | RESTROOM HAND SINK FAUCET               | 1/2"            | 1/2"  | ANGLE 1/2"    | 1.13  | 1.13 | 2           | 2          |
| HS-4        | RESTROOM HAND SINK FAUCET               | 1/2"            | 1/2"  | ANGLE 1/2"    | 1.13  | 1.13 | 1           | 1          |
| HS-5        | CE MAKER - SINK                         | 1/2"            | 1/2"  | HOSE 1/2"     | 1     | 1    | 1           | 1          |
| HS-6        | CE MAKER - SINK                         | 1/2"            | 1/2"  | HOSE 1/2"     | 1     | 1    | 1           | 1          |
| HS-7        | CE MAKER - SINK                         | 1/2"            | 1/2"  | MP            | 2.25  | 2.25 | 1           | 2          |
| HS-8        | CE MAKER - SINK                         | 1/2"            | 1/2"  | MP            | 1.13  | 1.13 | 1           | 1.13       |
| HS-9        | CE MAKER - SINK                         | 1/2"            | 1/2"  | MP            | 1.13  | 1.13 | 1           | 1.13       |
| HS-10       | CE MAKER - SINK                         | 1/2"            | 1/2"  | MP            | 1.13  | 1.13 | 1           | 1.13       |
| HS-11       | CE MAKER - SINK                         | 1/2"            | 1/2"  | MP            | 1.13  | 1.13 | 1           | 1.13       |
| HS-12       | CE MAKER - SINK                         | 1/2"            | 1/2"  | MP            | 1.13  | 1.13 | 1           | 1.13       |
| HS-13       | CE MAKER - SINK                         | 1/2"            | 1/2"  | MP            | 1.13  | 1.13 | 1           | 1.13       |
| HS-14       | CE MAKER - SINK                         | 1/2"            | 1/2"  | MP            | 1.13  | 1.13 | 1           | 1.13       |
| HS-15       | CE MAKER - SINK                         | 1/2"            | 1/2"  | MP            | 1.13  | 1.13 | 1           | 1.13       |
| HS-16       | CE MAKER - SINK                         | 1/2"            | 1/2"  | MP            | 1.13  | 1.13 | 1           | 1.13       |
| HS-17       | CE MAKER - SINK                         | 1/2"            | 1/2"  | MP            | 1.13  | 1.13 | 1           | 1.13       |
| HS-18       | CE MAKER - SINK                         | 1/2"            | 1/2"  | MP            | 1.13  | 1.13 | 1           | 1.13       |
| HS-19       | CE MAKER - SINK                         | 1/2"            | 1/2"  | MP            | 1.13  | 1.13 | 1           | 1.13       |
| HS-20       | CE MAKER - SINK                         | 1/2"            | 1/2"  | MP            | 1.13  | 1.13 | 1           | 1.13       |
| HS-21       | CE MAKER - SINK                         | 1/2"            | 1/2"  | MP            | 1.13  | 1.13 | 1           | 1.13       |
| HS-22       | CE MAKER - SINK                         | 1/2"            | 1/2"  | MP            | 1.13  | 1.13 | 1           | 1.13       |
| HS-23       | CE MAKER - SINK                         | 1/2"            | 1/2"  | MP            | 1.13  | 1.13 | 1           | 1.13       |
| HS-24       | CE MAKER - SINK                         | 1/2"            | 1/2"  | MP            | 1.13  | 1.13 | 1           | 1.13       |
| HS-25       | CE MAKER - SINK                         | 1/2"            | 1/2"  | MP            | 1.13  | 1.13 | 1           | 1.13       |
| HS-26       | CE MAKER - SINK                         | 1/2"            | 1/2"  | MP            | 1.13  | 1.13 | 1           | 1.13       |
| HS-27       | CE MAKER - SINK                         | 1/2"            | 1/2"  | MP            | 1.13  | 1.13 | 1           | 1.13       |
| HS-28       | CE MAKER - SINK                         | 1/2"            | 1/2"  | MP            | 1.13  | 1.13 | 1           | 1.13       |
| HS-29       | CE MAKER - SINK                         | 1/2"            | 1/2"  | MP            | 1.13  | 1.13 | 1           | 1.13       |
| HS-30       | CE MAKER - SINK                         | 1/2"            | 1/2"  | MP            | 1.13  | 1.13 | 1           | 1.13       |
| HS-31       | CE MAKER - SINK                         | 1/2"            | 1/2"  | MP            | 1.13  | 1.13 | 1           | 1.13       |
| HS-32       | CE MAKER - SINK                         | 1/2"            | 1/2"  | MP            | 1.13  | 1.13 | 1           | 1.13       |
| HS-33       | CE MAKER - SINK                         | 1/2"            | 1/2"  | MP            | 1.13  | 1.13 | 1           | 1.13       |
| HS-34       | CE MAKER - SINK                         | 1/2"            | 1/2"  | MP            | 1.13  | 1.13 | 1           | 1.13       |
| HS-35       | CE MAKER - SINK                         | 1/2"            | 1/2"  | MP            | 1.13  | 1.13 | 1           | 1.13       |
| HS-36       | CE MAKER - SINK                         | 1/2"            | 1/2"  | MP            | 1.13  | 1.13 | 1           | 1.13       |
| HS-37       | CE MAKER - SINK                         | 1/2"            | 1/2"  | MP            | 1.13  | 1.13 | 1           | 1.13       |
| HS-38       | CE MAKER - SINK                         | 1/2"            | 1/2"  | MP            | 1.13  | 1.13 | 1           | 1.13       |
| HS-39       | CE MAKER - SINK                         | 1/2"            | 1/2"  | MP            | 1.13  | 1.13 | 1           | 1.13       |
| HS-40       | CE MAKER - SINK                         | 1/2"            | 1/2"  | MP            | 1.13  | 1.13 | 1           | 1.13       |
| HS-41       | CE MAKER - SINK                         | 1/2"            | 1/2"  | MP            | 1.13  | 1.13 | 1           | 1.13       |
| HS-42       | CE MAKER - SINK                         | 1/2"            | 1/2"  | MP            | 1.13  | 1.13 | 1           | 1.13       |
| HS-43       | CE MAKER - SINK                         | 1/2"            | 1/2"  | MP            | 1.13  | 1.13 | 1           | 1.13       |
| HS-44       | CE MAKER - SINK                         | 1/2"            | 1/2"  | MP            | 1.13  | 1.13 | 1           | 1.13       |
| HS-45       | CE MAKER - SINK                         | 1/2"            | 1/2"  | MP            | 1.13  | 1.13 | 1           | 1.13       |
| HS-46       | CE MAKER - SINK                         | 1/2"            | 1/2"  | MP            | 1.13  | 1.13 | 1           | 1.13       |
| HS-47       | CE MAKER - SINK                         | 1/2"            | 1/2"  | MP            | 1.13  | 1.13 | 1           | 1.13       |
| HS-48       | CE MAKER - SINK                         | 1/2"            | 1/2"  | MP            | 1.13  | 1.13 | 1           | 1.13       |
| HS-49       | CE MAKER - SINK                         | 1/2"            | 1/2"  | MP            | 1.13  | 1.13 | 1           | 1.13       |
| HS-50       | CE MAKER - SINK                         | 1/2"            | 1/2"  | MP            | 1.13  | 1.13 | 1           | 1.13       |
| HS-51       | CE MAKER - SINK                         | 1/2"            | 1/2"  | MP            | 1.13  | 1.13 | 1           | 1.13       |
| HS-52       | CE MAKER - SINK                         | 1/2"            | 1/2"  | MP            | 1.13  | 1.13 | 1           | 1.13       |
| HS-53       | CE MAKER - SINK                         | 1/2"            | 1/2"  | MP            | 1.13  | 1.13 | 1           | 1.13       |
| HS-54       | CE MAKER - SINK                         | 1/2"            | 1/2"  | MP            | 1.13  | 1.13 | 1           | 1.13       |
| HS-55       | CE MAKER - SINK                         | 1/2"            | 1/2"  | MP            | 1.13  | 1.13 | 1           | 1.13       |
| HS-56       | CE MAKER - SINK                         | 1/2"            | 1/2"  | MP            | 1.13  | 1.13 | 1           | 1.13       |
| HS-57       | CE MAKER - SINK                         | 1/2"            | 1/2"  | MP            | 1.13  | 1.13 | 1           | 1.13       |
| HS-58       | CE MAKER - SINK                         | 1/2"            | 1/2"  | MP            | 1.13  | 1.13 | 1           | 1.13       |
| HS-59       | CE MAKER - SINK                         | 1/2"            | 1/2"  | MP            | 1.13  | 1.13 | 1           | 1.13       |
| HS-60       | CE MAKER - SINK                         | 1/2"            | 1/2"  | MP            | 1.13  | 1.13 | 1           | 1.13       |
| HS-61       | CE MAKER - SINK                         | 1/2"            | 1/2"  | MP            | 1.13  | 1.13 | 1           | 1.13       |
| HS-62       | CE MAKER - SINK                         | 1/2"            | 1/2"  | MP            | 1.13  | 1.13 | 1           | 1.13       |
| HS-63       | CE MAKER - SINK                         | 1/2"            | 1/2"  | MP            | 1.13  | 1.13 | 1           | 1.13       |
| HS-64       | CE MAKER - SINK                         | 1/2"            | 1/2"  | MP            | 1.13  | 1.13 | 1           | 1.13       |
| HS-65       | CE MAKER - SINK                         | 1/2"            | 1/2"  | MP            | 1.13  | 1.13 | 1           | 1.13       |
| HS-66       | CE MAKER - SINK                         | 1/2"            | 1/2"  | MP            | 1.13  | 1.13 | 1           | 1.13       |
| HS-67       | CE MAKER - SINK                         | 1/2"            | 1/2"  | MP            | 1.13  | 1.13 | 1           | 1.13       |
| HS-68       | CE MAKER - SINK                         | 1/2"            | 1/2"  | MP            | 1.13  | 1.13 | 1           | 1.13       |
| HS-69       | CE MAKER - SINK                         | 1/2"            | 1/2"  | MP            | 1.13  | 1.13 | 1           | 1.13       |
| HS-70       | CE MAKER - SINK                         | 1/2"            | 1/2"  | MP            | 1.13  | 1.13 | 1           | 1.13       |
| HS-71       | CE MAKER - SINK                         | 1/2"            | 1/2"  | MP            | 1.13  | 1.13 | 1           | 1.13       |
| HS-72       | CE MAKER - SINK                         | 1/2"            | 1/2"  | MP            | 1.13  | 1.13 | 1           | 1.13       |
| HS-73       | CE MAKER - SINK                         | 1/2"            | 1/2"  | MP            | 1.13  | 1.13 | 1           | 1.13       |
| HS-74       | CE MAKER - SINK                         | 1/2"            | 1/2"  | MP            | 1.13  | 1.13 | 1           | 1.13       |
| HS-75       | CE MAKER - SINK                         | 1/2"            | 1/2"  | MP            | 1.13  | 1.13 | 1           | 1.13       |
| HS-76       | CE MAKER - SINK                         | 1/2"            | 1/2"  | MP            | 1.13  | 1.13 | 1           | 1.13       |
| HS-77       | CE MAKER - SINK                         | 1/2"            | 1/2"  | MP            | 1.13  | 1.13 | 1           | 1.13       |
| HS-78       | CE MAKER - SINK                         | 1/2"            | 1/2"  | MP            | 1.13  | 1.13 | 1           | 1.13       |
| HS-79       | CE MAKER - SINK                         | 1/2"            | 1/2"  | MP            | 1.13  | 1.13 | 1           | 1.13       |
| HS-80       | CE MAKER - SINK                         | 1/2"            | 1/2"  | MP            | 1.13  | 1.13 | 1           | 1.13       |
| HS-81       | CE MAKER - SINK                         | 1/2"            | 1/2"  | MP            | 1.13  | 1.13 | 1           | 1.13       |
| HS-82       | CE MAKER - SINK                         | 1/2"            | 1/2"  | MP            | 1.13  | 1.13 | 1           | 1.13       |
| HS-83       | CE MAKER - SINK                         | 1/2"            | 1/2"  | MP            | 1.13  | 1.13 | 1           | 1.13       |
| HS-84       | CE MAKER - SINK                         | 1/2"            | 1/2"  | MP            | 1.13  | 1.13 | 1           | 1.13       |
| HS-85       | CE MAKER - SINK                         | 1/2"            | 1/2"  | MP            | 1.13  | 1.13 | 1           | 1.13       |
| HS-86       | CE MAKER - SINK                         | 1/2"            | 1/2"  | MP            | 1.13  | 1.13 | 1           | 1.13       |
| HS-87       | CE MAKER - SINK                         | 1/2"            | 1/2"  | MP            | 1.13  | 1.13 | 1           | 1.13       |
| HS-88       | CE MAKER - SINK                         | 1/2"            | 1/2"  | MP            | 1.13  | 1.13 | 1           | 1.13       |
| HS-89       | CE MAKER - SINK                         | 1/2"            | 1/2"  | MP            | 1.13  | 1.13 | 1           | 1.13       |
| HS-90       | CE MAKER - SINK                         | 1/2"            | 1/2"  | MP            | 1.13  | 1.13 | 1           | 1.13       |
| HS-91       | CE MAKER - SINK                         | 1/2"            | 1/2"  | MP            | 1.13  | 1.13 | 1           | 1.13       |
| HS-92       | CE MAKER - SINK                         | 1/2"            | 1/2"  | MP            | 1.13  | 1.13 | 1           | 1.13       |
| HS-93       | CE MAKER - SINK                         | 1/2"            | 1/2"  | MP            | 1.13  | 1.13 | 1           | 1.13       |
| HS-94       | CE MAKER - SINK                         | 1/2"            | 1/2"  | MP            | 1.13  | 1.13 | 1           | 1.13       |
| HS-95       | CE MAKER - SINK                         | 1/2"            | 1/2"  | MP            | 1.13  | 1.13 | 1           | 1.13       |
| HS-96       | CE MAKER - SINK                         | 1/2"            | 1/2"  | MP            | 1.13  | 1.13 | 1           | 1.13       |
| HS-97       | CE MAKER - SINK                         | 1/2"            | 1/2"  | MP            | 1.13  | 1.13 | 1           | 1.13       |
| HS-98       | CE MAKER - SINK                         | 1/2"            | 1/2"  | MP            | 1.13  | 1.13 | 1           | 1.13       |
| HS-99       | CE MAKER - SINK                         | 1/2"            | 1/2"  | MP            | 1.13  | 1.13 | 1           | 1.13       |
| HS-100      | CE MAKER - SINK                         | 1/2"            | 1/2"  | MP            | 1.13  | 1.13 | 1           | 1.13       |
| GRAND TOTAL |   |                 |       |               | 11    | 11   | 2           | 2          |



**PLUMBING SUPPLY DIAGRAM**  
NOT TO SCALE



**PLUMBING SUPPLY PLAN**  
1/8\"/>

**GF**  
www.greentierfirm.com  
1320 Peachtree Street, NE  
Suite 2000 Atlanta, GA 30309  
t. 404.951.4000

**CHIPOTLE MEXICAN GRILL**  
1560 ST. GEORGES AVE. AVENEL, NJ 07001

STORE NO.: 4929  
1560 ST. GEORGES AVE. AVENEL, NJ 07001

REV. DATE DESCRIPTION  
1 05/24/2024 PERM SET CONSTRUCTION SET

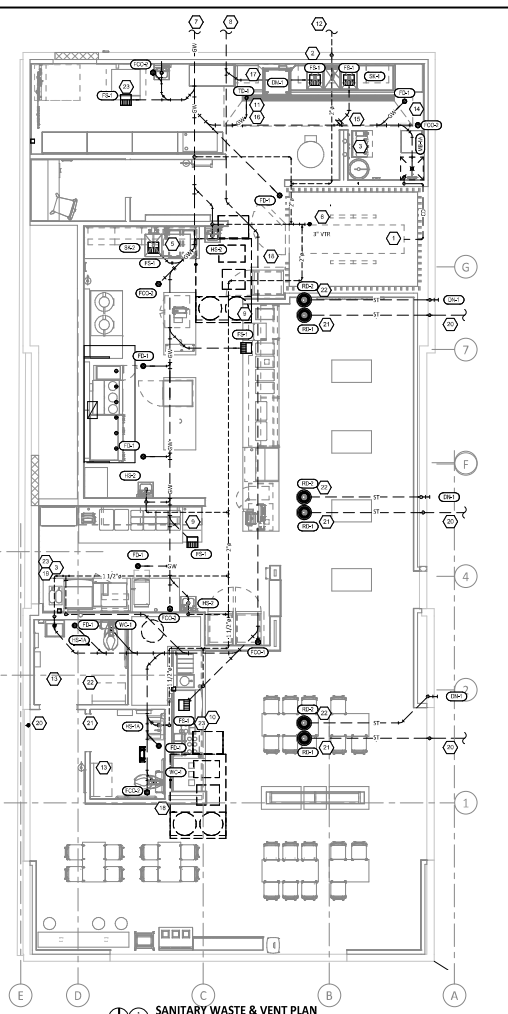
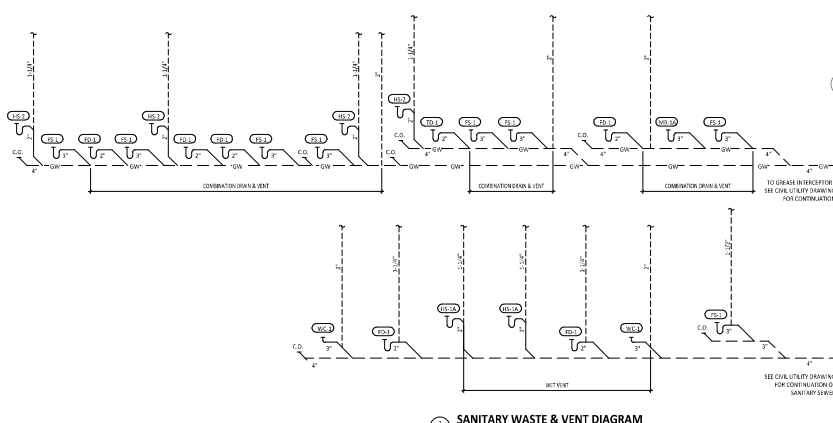
PLUMBING PLAN WATER

P100

**PLUMBING WASTE AND VENT PLAN NOTES**

1. PROVIDE 3/4" CONDENSATE DRAIN FROM THE W/LS IN COOLER EVAPORATOR TO THE FLOOR SINK REFIN IN SHOW. SOON CONDENSATE DRAIN A MINIMUM OF 2" THE FOOT. HOLD UP CONDENSATE DRAIN IN WALL AS CLOSE AS POSSIBLE. CONCEAL DRAIN WITHIN PLUMBING WALLS AS SHOWN. DISCHARGE THROUGH AN AIR GAP. MAKE FIRM CONNECTION TO WASTEWATER BOILER W/ALONG FOODSICHER A 1/2" MIN. CONDENSATE DRAIN SHOULD TERMINATE IN WALL POINT OF DISCHARGE IF ANY.
2. PROVIDE DRAIN CONNECTIONS TO THE THREE COMPARTMENT SINK PER DETAIL 3/27/20.
3. COVER WITH THE TOP OF SOAK BUNDLE WITH COCA-COLA FLOOR FROM EACH KITCHEN AREA TO EACH SOAK BUNDLE. 2" MIN. WITHIN THE WALLS DOWN TO THE DRYER. BOTH THE SOAK BUNDLE SHALL BE HELD TO OVERLAP WITH PROTECTIVE COVER. COVER SHALL BE HELD TO THE SOAK LINE BUNDLES WITH COCA-COLA FLOOR DURING ROUGH-IN AND PROVIDE RECESSARY SUPPORTS. SEE ARCHITECTURAL DRAWINGS FOR SOAK BUNDLE TERMINATION LOCATION AND PROVIDE TERMINATION PER DETAIL 1/2/20/20.
4. NOT SHOWN.
5. PROVIDE DRAINAGE FROM THE ROOF PREP SINK TO THE FLOOR SINK. PROVIDE AN AIR GAP AT THE DISCHARGE TO THE FLOOR SINK.
6. PROVIDE 3/4" VENT THROUGH THE ROOF PER DETAIL 3/27/20.
7. PROVIDE GREASE INTERCEPTOR (G.I.) SEE CIVIL UTILITY PLAN FOR G.I. LOCATION AND FOR CONNECTION OF 4" DRAINAGE FROM THE ROOF PER DETAIL 3/27/20.
8. SEE CIVIL UTILITY PLAN FOR CONNECTION OF 4" SANITARY SEWER.
9. PROVIDE 3/4" VALVED DRAIN FROM HOT FOOD TABLE TO THE FLOOR SINK. DRAIN THROUGH AN AIR GAP. PROVIDE INSULATED COPPER DRAIN LINES FROM THE SEA TRAY DRAIN AND THE SOAK MACHINE DRAIN TO THE FLOOR SINK. DRAIN THROUGH AN AIR GAP. HOLD SEA TRAY DRAIN AS HIGH AS POSSIBLE AND SECURE TO STRUCTURE BELOW THE OFFICAL COUNTER.
10. TRIM TRASH DRAIN PER THE MANUFACTURER'S INSTALLATION INSTRUCTIONS. PRIOR TO INSTALLATION OF THE TRASH DRAIN WITHOUT GAPS. INSULATE TRASH DRAIN WITH INSIGHT PROTECTIVE SLOPE TOWARD THE DRAIN CONNECTION TO AVOID STANDING WATER IN TRASH DRAIN.
11. PROVIDE 2" VENT TO BEAR ALL INTERCEPT G.I. SEE CIVIL UTILITY PLAN FOR G.I. LOCATION.
12. DO NOT PROVIDE WALL LEAK HOOTS ON TIE OF PUBLICLY EXPOSED WALLS. IF A WALL LEAK HOOT IS REQUIRED ON THIS SANITARY CONNECTION TO EACH G.I. OR WATER COVERTER'S CONNECTION, WATERMANGER.
13. PROVIDE INSPECT WASTE AND CONDENSATE DRAIN FROM FIXTURES OTHER THAN KITCHEN SINKS CONCEALED IN THE WALL AS SHOWN IN DETAIL 3/27/20.
14. PROVIDE DRAIN FROM WATER FILTER SIP TO WOP BASK CONCEALED IN THE WALL AS SHOWN IN DETAIL 3/27/20.
15. PROVIDE TRENCH DRAIN AS SHOWN IN DETAIL 1/2/20/20.
16. INSTALL DRAIN HOSE CONNECTION WITH COCA-COLA FROM DISH MACHINE OUTLET TO FLOOR SINK. HOLD DRAIN HOSE TIGHT TO WALL AND SECURE TO SOAK SINK DRAIN TO MAINTAIN AN AIR GAP AT THE FLOOR SINK.
17. PROVIDE CONDENSATE TRAP ON THE FLOOR DETAIL 3/27/20.
18. SEE DETAIL 1/2/20/20 FOR DRAINAGE FROM SEA TRAY, SEA BASKET, AND SOAK MACHINE TO PLUMBING DRAIN.
19. SEE CIVIL UTILITY PLAN FOR CONNECTION OF 4" SANITARY SEWER.
20. PROVIDE 3" STORM DRAIN CONDUCTOR FROM PRIMARY ROOF DRAIN NO. 8 DOWN IN WALL TO 4" STORM DRAIN BELOW GRADE. IN ROOM, HORIZONTAL STORM DRAIN CONDUCTORS SHALL BE SLOPED A MINIMUM OF 1/2" PER FOOT.
21. PROVIDE 4" STORM DRAIN CONDUCTOR FROM SECONDARY ROOF DRAIN NO. 2 TO DOWNWELL HOISTED ON 1" SLOPE AT 2" PER FOOT. IN INTERIOR HORIZONTAL STORM DRAIN CONDUCTORS SHALL BE SLOPED A MINIMUM OF 1/2" PER FOOT.
22. PROVIDE PVC DRAIN PIPS FROM THE DISH MACHINE TO THE FLOOR SINK PER THE MANUFACTURER'S INSTALLATION INSTRUCTIONS. PROVIDE A COCA-COLA APPROVED AIR GAP AT THE DISCHARGE TO THE FLOOR SINK. SECURE OR MANAGE DRAIN PIPES TO THE BOTTOM OF THE KITCHEN.

| TAG    | DESCRIPTION                             | CONNECTOR | SIZE | WASTE | W/LS | VENT | COUNT | TOTAL QTY |
|--------|---|-----------|------|-------|------|------|-------|-----------|
| USB-1  | 3/4" SANITARY TRACHER (PLUMBING) OUTLET | 3/4"      | 0    | 1     | 0    | 0    | 1     | 1         |
| ROSDA  | ROOF DRAIN (1/2")                       | 1/2"      | 0    | 1     | 0    | 0    | 1     | 1         |
| ROSDA  | ROOF DRAIN (1/2")                       | 1/2"      | 0    | 5     | 0    | 0    | 5     | 5         |
| ROSDA  | ROOF DRAIN (1/2")                       | 1/2"      | 0    | 2     | 2    | 2    | 3     | 3         |
| TRASH  | TRASH DRAIN                             | 2"        | 0    | 1     | 0    | 0    | 1     | 1         |
| ES-3   | ES-3 SINK                               | 3"        | 0    | 2     | 2    | 2    | 3     | 3         |
| ES-4   | ES-4 SINK                               | 3"        | 0    | 1     | 0    | 0    | 1     | 1         |
| ES-5   | ES-5 SINK                               | 3"        | 0    | 1     | 0    | 0    | 1     | 1         |
| ES-6   | ES-6 SINK                               | 3"        | 0    | 1     | 0    | 0    | 1     | 1         |
| ES-7   | ES-7 SINK                               | 3"        | 0    | 1     | 0    | 0    | 1     | 1         |
| ES-8   | ES-8 SINK                               | 3"        | 0    | 1     | 0    | 0    | 1     | 1         |
| ES-9   | ES-9 SINK                               | 3"        | 0    | 1     | 0    | 0    | 1     | 1         |
| ES-10  | ES-10 SINK                              | 3"        | 0    | 1     | 0    | 0    | 1     | 1         |
| ES-11  | ES-11 SINK                              | 3"        | 0    | 1     | 0    | 0    | 1     | 1         |
| ES-12  | ES-12 SINK                              | 3"        | 0    | 1     | 0    | 0    | 1     | 1         |
| ES-13  | ES-13 SINK                              | 3"        | 0    | 1     | 0    | 0    | 1     | 1         |
| ES-14  | ES-14 SINK                              | 3"        | 0    | 1     | 0    | 0    | 1     | 1         |
| ES-15  | ES-15 SINK                              | 3"        | 0    | 1     | 0    | 0    | 1     | 1         |
| ES-16  | ES-16 SINK                              | 3"        | 0    | 1     | 0    | 0    | 1     | 1         |
| ES-17  | ES-17 SINK                              | 3"        | 0    | 1     | 0    | 0    | 1     | 1         |
| ES-18  | ES-18 SINK                              | 3"        | 0    | 1     | 0    | 0    | 1     | 1         |
| ES-19  | ES-19 SINK                              | 3"        | 0    | 1     | 0    | 0    | 1     | 1         |
| ES-20  | ES-20 SINK                              | 3"        | 0    | 1     | 0    | 0    | 1     | 1         |
| ES-21  | ES-21 SINK                              | 3"        | 0    | 1     | 0    | 0    | 1     | 1         |
| ES-22  | ES-22 SINK                              | 3"        | 0    | 1     | 0    | 0    | 1     | 1         |
| ES-23  | ES-23 SINK                              | 3"        | 0    | 1     | 0    | 0    | 1     | 1         |
| ES-24  | ES-24 SINK                              | 3"        | 0    | 1     | 0    | 0    | 1     | 1         |
| ES-25  | ES-25 SINK                              | 3"        | 0    | 1     | 0    | 0    | 1     | 1         |
| ES-26  | ES-26 SINK                              | 3"        | 0    | 1     | 0    | 0    | 1     | 1         |
| ES-27  | ES-27 SINK                              | 3"        | 0    | 1     | 0    | 0    | 1     | 1         |
| ES-28  | ES-28 SINK                              | 3"        | 0    | 1     | 0    | 0    | 1     | 1         |
| ES-29  | ES-29 SINK                              | 3"        | 0    | 1     | 0    | 0    | 1     | 1         |
| ES-30  | ES-30 SINK                              | 3"        | 0    | 1     | 0    | 0    | 1     | 1         |
| ES-31  | ES-31 SINK                              | 3"        | 0    | 1     | 0    | 0    | 1     | 1         |
| ES-32  | ES-32 SINK                              | 3"        | 0    | 1     | 0    | 0    | 1     | 1         |
| ES-33  | ES-33 SINK                              | 3"        | 0    | 1     | 0    | 0    | 1     | 1         |
| ES-34  | ES-34 SINK                              | 3"        | 0    | 1     | 0    | 0    | 1     | 1         |
| ES-35  | ES-35 SINK                              | 3"        | 0    | 1     | 0    | 0    | 1     | 1         |
| ES-36  | ES-36 SINK                              | 3"        | 0    | 1     | 0    | 0    | 1     | 1         |
| ES-37  | ES-37 SINK                              | 3"        | 0    | 1     | 0    | 0    | 1     | 1         |
| ES-38  | ES-38 SINK                              | 3"        | 0    | 1     | 0    | 0    | 1     | 1         |
| ES-39  | ES-39 SINK                              | 3"        | 0    | 1     | 0    | 0    | 1     | 1         |
| ES-40  | ES-40 SINK                              | 3"        | 0    | 1     | 0    | 0    | 1     | 1         |
| ES-41  | ES-41 SINK                              | 3"        | 0    | 1     | 0    | 0    | 1     | 1         |
| ES-42  | ES-42 SINK                              | 3"        | 0    | 1     | 0    | 0    | 1     | 1         |
| ES-43  | ES-43 SINK                              | 3"        | 0    | 1     | 0    | 0    | 1     | 1         |
| ES-44  | ES-44 SINK                              | 3"        | 0    | 1     | 0    | 0    | 1     | 1         |
| ES-45  | ES-45 SINK                              | 3"        | 0    | 1     | 0    | 0    | 1     | 1         |
| ES-46  | ES-46 SINK                              | 3"        | 0    | 1     | 0    | 0    | 1     | 1         |
| ES-47  | ES-47 SINK                              | 3"        | 0    | 1     | 0    | 0    | 1     | 1         |
| ES-48  | ES-48 SINK                              | 3"        | 0    | 1     | 0    | 0    | 1     | 1         |
| ES-49  | ES-49 SINK                              | 3"        | 0    | 1     | 0    | 0    | 1     | 1         |
| ES-50  | ES-50 SINK                              | 3"        | 0    | 1     | 0    | 0    | 1     | 1         |
| ES-51  | ES-51 SINK                              | 3"        | 0    | 1     | 0    | 0    | 1     | 1         |
| ES-52  | ES-52 SINK                              | 3"        | 0    | 1     | 0    | 0    | 1     | 1         |
| ES-53  | ES-53 SINK                              | 3"        | 0    | 1     | 0    | 0    | 1     | 1         |
| ES-54  | ES-54 SINK                              | 3"        | 0    | 1     | 0    | 0    | 1     | 1         |
| ES-55  | ES-55 SINK                              | 3"        | 0    | 1     | 0    | 0    | 1     | 1         |
| ES-56  | ES-56 SINK                              | 3"        | 0    | 1     | 0    | 0    | 1     | 1         |
| ES-57  | ES-57 SINK                              | 3"        | 0    | 1     | 0    | 0    | 1     | 1         |
| ES-58  | ES-58 SINK                              | 3"        | 0    | 1     | 0    | 0    | 1     | 1         |
| ES-59  | ES-59 SINK                              | 3"        | 0    | 1     | 0    | 0    | 1     | 1         |
| ES-60  | ES-60 SINK                              | 3"        | 0    | 1     | 0    | 0    | 1     | 1         |
| ES-61  | ES-61 SINK                              | 3"        | 0    | 1     | 0    | 0    | 1     | 1         |
| ES-62  | ES-62 SINK                              | 3"        | 0    | 1     | 0    | 0    | 1     | 1         |
| ES-63  | ES-63 SINK                              | 3"        | 0    | 1     | 0    | 0    | 1     | 1         |
| ES-64  | ES-64 SINK                              | 3"        | 0    | 1     | 0    | 0    | 1     | 1         |
| ES-65  | ES-65 SINK                              | 3"        | 0    | 1     | 0    | 0    | 1     | 1         |
| ES-66  | ES-66 SINK                              | 3"        | 0    | 1     | 0    | 0    | 1     | 1         |
| ES-67  | ES-67 SINK                              | 3"        | 0    | 1     | 0    | 0    | 1     | 1         |
| ES-68  | ES-68 SINK                              | 3"        | 0    | 1     | 0    | 0    | 1     | 1         |
| ES-69  | ES-69 SINK                              | 3"        | 0    | 1     | 0    | 0    | 1     | 1         |
| ES-70  | ES-70 SINK                              | 3"        | 0    | 1     | 0    | 0    | 1     | 1         |
| ES-71  | ES-71 SINK                              | 3"        | 0    | 1     | 0    | 0    | 1     | 1         |
| ES-72  | ES-72 SINK                              | 3"        | 0    | 1     | 0    | 0    | 1     | 1         |
| ES-73  | ES-73 SINK                              | 3"        | 0    | 1     | 0    | 0    | 1     | 1         |
| ES-74  | ES-74 SINK                              | 3"        | 0    | 1     | 0    | 0    | 1     | 1         |
| ES-75  | ES-75 SINK                              | 3"        | 0    | 1     | 0    | 0    | 1     | 1         |
| ES-76  | ES-76 SINK                              | 3"        | 0    | 1     | 0    | 0    | 1     | 1         |
| ES-77  | ES-77 SINK                              | 3"        | 0    | 1     | 0    | 0    | 1     | 1         |
| ES-78  | ES-78 SINK                              | 3"        | 0    | 1     | 0    | 0    | 1     | 1         |
| ES-79  | ES-79 SINK                              | 3"        | 0    | 1     | 0    | 0    | 1     | 1         |
| ES-80  | ES-80 SINK                              | 3"        | 0    | 1     | 0    | 0    | 1     | 1         |
| ES-81  | ES-81 SINK                              | 3"        | 0    | 1     | 0    | 0    | 1     | 1         |
| ES-82  | ES-82 SINK                              | 3"        | 0    | 1     | 0    | 0    | 1     | 1         |
| ES-83  | ES-83 SINK                              | 3"        | 0    | 1     | 0    | 0    | 1     | 1         |
| ES-84  | ES-84 SINK                              | 3"        | 0    | 1     | 0    | 0    | 1     | 1         |
| ES-85  | ES-85 SINK                              | 3"        | 0    | 1     | 0    | 0    | 1     | 1         |
| ES-86  | ES-86 SINK                              | 3"        | 0    | 1     | 0    | 0    | 1     | 1         |
| ES-87  | ES-87 SINK                              | 3"        | 0    | 1     | 0    | 0    | 1     | 1         |
| ES-88  | ES-88 SINK                              | 3"        | 0    | 1     | 0    | 0    | 1     | 1         |
| ES-89  | ES-89 SINK                              | 3"        | 0    | 1     | 0    | 0    | 1     | 1         |
| ES-90  | ES-90 SINK                              | 3"        | 0    | 1     | 0    | 0    | 1     | 1         |
| ES-91  | ES-91 SINK                              | 3"        | 0    | 1     | 0    | 0    | 1     | 1         |
| ES-92  | ES-92 SINK                              | 3"        | 0    | 1     | 0    | 0    | 1     | 1         |
| ES-93  | ES-93 SINK                              | 3"        | 0    | 1     | 0    | 0    | 1     | 1         |
| ES-94  | ES-94 SINK                              | 3"        | 0    | 1     | 0    | 0    | 1     | 1         |
| ES-95  | ES-95 SINK                              | 3"        | 0    | 1     | 0    | 0    | 1     | 1         |
| ES-96  | ES-96 SINK                              | 3"        | 0    | 1     | 0    | 0    | 1     | 1         |
| ES-97  | ES-97 SINK                              | 3"        | 0    | 1     | 0    | 0    | 1     | 1         |
| ES-98  | ES-98 SINK                              | 3"        | 0    | 1     | 0    | 0    | 1     | 1         |
| ES-99  | ES-99 SINK                              | 3"        | 0    | 1     | 0    | 0    | 1     | 1         |
| ES-100 | ES-100 SINK                             | 3"        | 0    | 1     | 0    | 0    | 1     | 1         |




  
 1320 Peachtree Street, NE  
 Suite 2000 Atlanta, GA 30309  
 T. 404.951.4000


  
 1560 ST. GEORGES  
 AVE. AVENEL,  
 NJ 07001

STORE NO.: 4929  
 1560 ST. GEORGES  
 AVE. AVENEL,  
 NJ 07001

REV. DATE DESCRIPTION  
 1 06/24/2023 PERM'S SET  
 2 05/24/2024 CONSTRUCTION SET

THE INFORMATION CONTAINED IN THIS DRAWING IS THE PROPERTY OF GF. NO PART OF THIS DRAWING IS TO BE REPRODUCED OR TRANSMITTED IN ANY FORM OR BY ANY MEANS, ELECTRONIC OR MECHANICAL, INCLUDING PHOTOCOPYING, RECORDING, OR BY ANY INFORMATION STORAGE AND RETRIEVAL SYSTEM.

PROJECT NO. 202303020

**PLUMBING PLAN  
 WASTE & VENT**

**P110**



