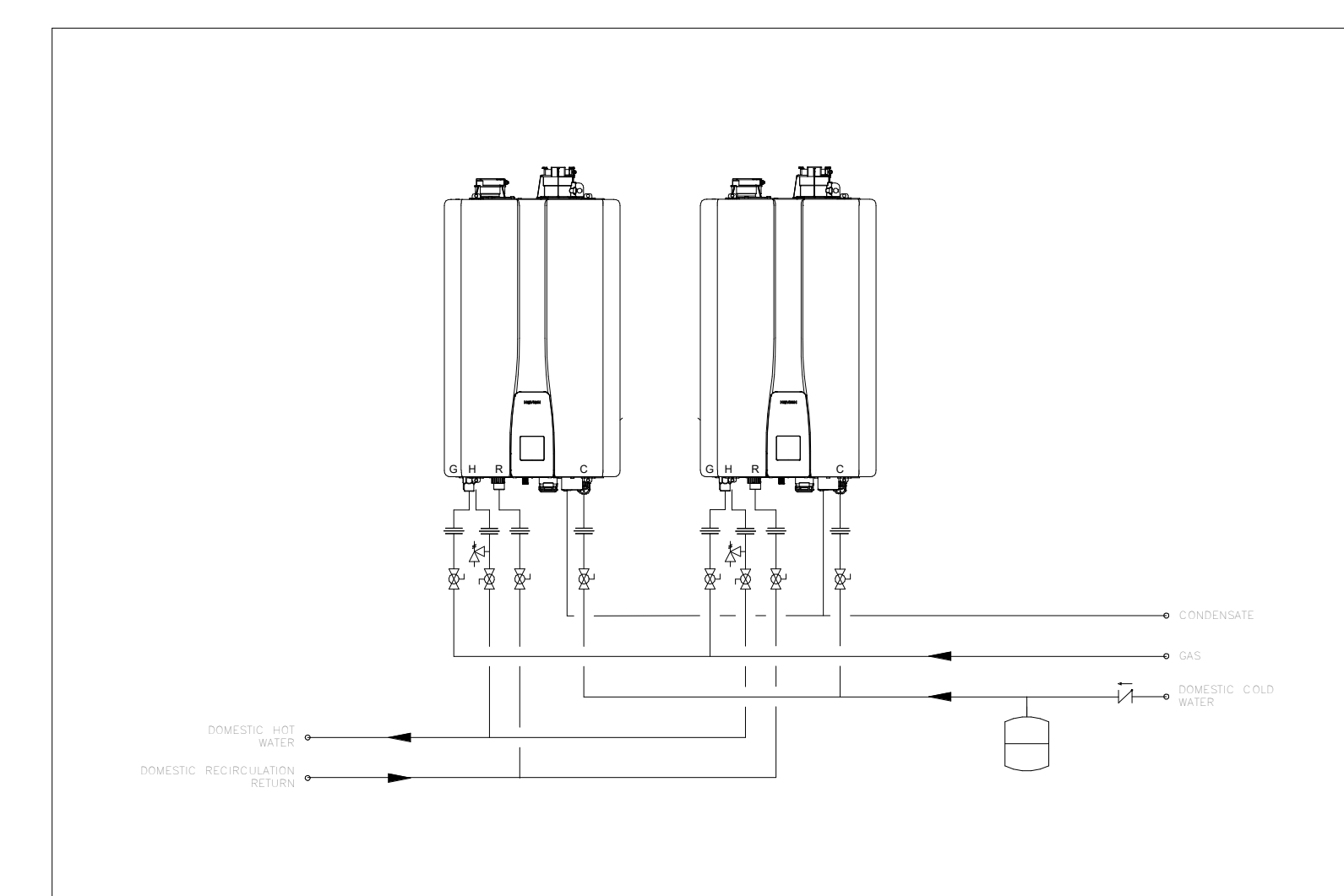
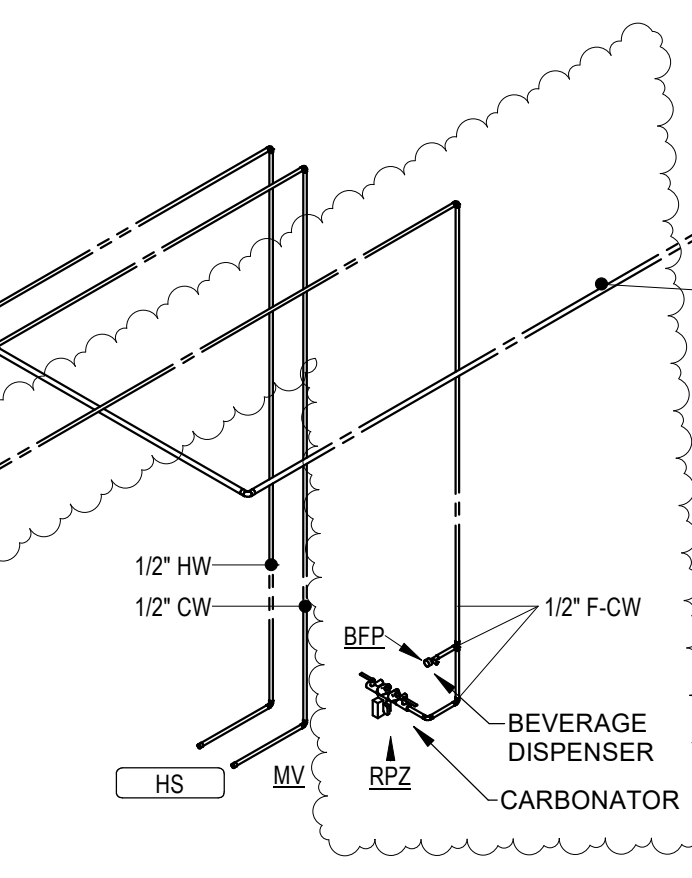
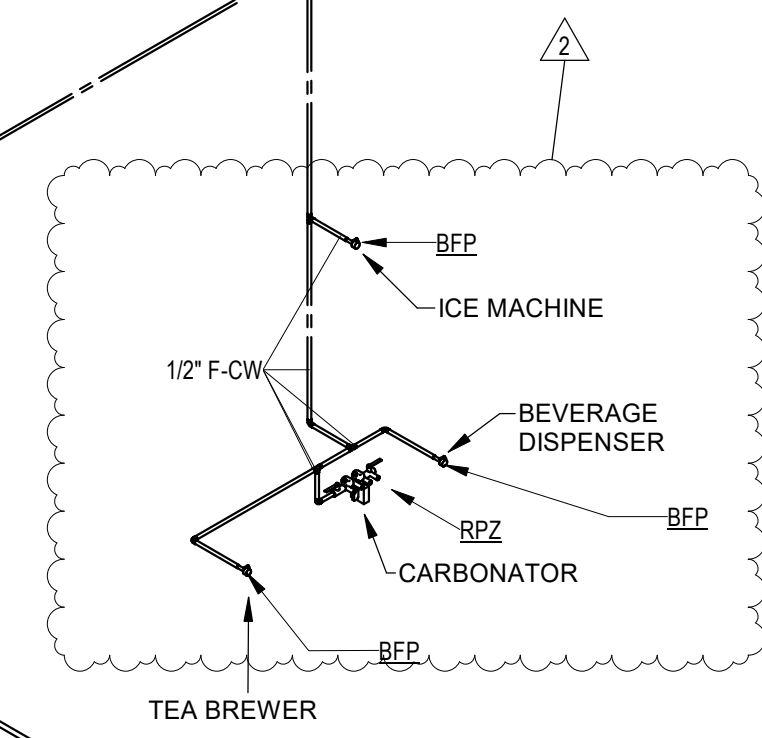
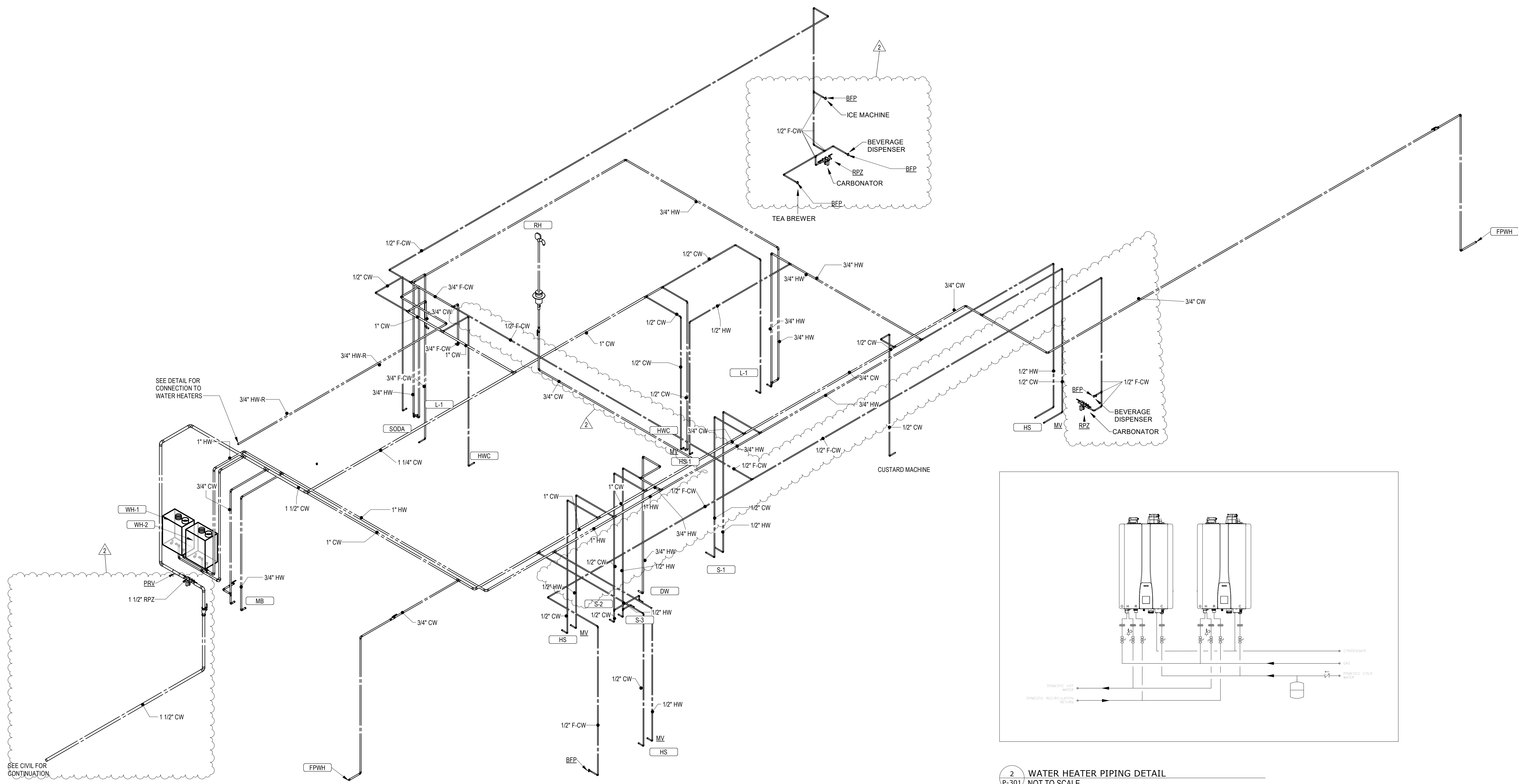




a new restaurant for:
Freddy's
3308 SW 14TH ST Bentonville, AR 71712

date
10/23/2024
drawn by
AK/FO
checked by
DS/EK
revisions
08/12/2025

sheet number
P-301
drawing type
Permit
project number
23006.26



1 DOMESTIC WATER RISER DIAGRAM
P-301

2 WATER HEATER PIPING DETAIL
P-301 NOT TO SCALE

PEX PIPING REQUIREMENTS

PIPE SIZES GIVEN ON THE DRAWINGS ARE NOMINAL COPPER PIPE SIZE. IF PEX PIPING IS USED, INCREASE PEX PIPING ONE SIZE ABOVE LISTED SIZES AS REQUIRED TO EQUAL OR EXCEED COPPER PIPE INSIDE DIAMETER.

BC PROJECT # 24630
ARKANSAS PE CDA #806
This drawing has been prepared by the Engineer, or under his supervision. This drawing is provided as an instrument of service by the Designer/Engineer and is intended for use on this project only. Pursuant to the Architectural Works Copyright Protection Act of 1990, all drawings, specifications, data and designs, including the overall form, arrangement and composition of letters and elements appearing hereon, constitute the original, copyrighted work of the Designer/Engineer. Any reproduction, use, or disclosure of information contained herein without prior written consent of the Engineer is strictly prohibited. © 2024 BC Engineers, Inc.



5720 Reeder Shawnee, KS 66203 (913)282-1772



| BACKFLOW PREVENTER | | | | |
|--------------------|--------------|-------|---|--|
| Identity Type Mark | Manufacturer | Model | Description | |
| RPZ | WATTS | LF009 | LEAD FREE BRONZE BODY CONSTRUCTION, TWO IN-LINE INDEPENDENT CHECK VALVES, REPLACEABLE CHECK SEATS WITH AN INTERMEDIATE RELIEF VALVE, AND BALL VALVE TEST COCKS. | |
| BFP | WATTS | SD-3 | DUAL CHECK VALVE WITH ATMOSPHERIC PORT & STRAINER | |

| MIXING VALVE SCHEDULE | | | | |
|-----------------------|--------------|---------|---|--|
| Identity Type Mark | Manufacturer | Model | Description | |
| MV | Watts | LFUSG-B | THERMOSTATIC MIXING VALVE, LEAD FREE BRONZE BODY, LOCKED TEMPERATURE ADJUSTMENT CAP (VANDAL RESISTANT), COPPER ENCAPSULATED THERMOSTAT ASSEMBLY WITH BRASS SHUTTLE, STAINLESS STEEL SPRINGS, INTEGRAL CHECK VALVES ON HOT AND COLD INLETS. (SET TO 110 DEGREES F). ASSE #1070 LISTED. | |

| WATER HEATER SCHEDULE | | | | | | | | | | | |
|-----------------------|--------------|-----------|--------------|----------|----------------|---------------|------------|------------------|---------------|--|-------|
| Identity | Manufacturer | Model | Product Type | Gas Heat | Gas Heat Input | | | Rated Efficiency | Fuel Type | Electrical | Notes |
| | | | | | Input Size | Output Rating | Input Size | | | | |
| WH-2 | NAVIEN | NPE-240-A | Tankless | Yes | 199000 Btu/h | 195020 Btu/h | 98.0% | NG | 120 V, 1Φ, 3W | PROVIDE WITH INTERNAL RECIRCULATION PUMP, NAVIEN READY LINK COMMUNICATION CABLE, REMOTE CONTROLLER, NAVIEN PLUMB EASY VALVE SET, PRESSURE RELIEF VALVE, CONDENSATE DRAIN HOSE, CONDENSATE NEUTRALIZER, VENT TERMINATORS. SET AT 135-140 DEGREES F. | |
| WH-1 | NAVIEN | NPE-240-A | Tankless | Yes | 199000 Btu/h | 195020 Btu/h | 98.0% | NG | 120 V, 1Φ, 3W | PROVIDE WITH INTERNAL RECIRCULATION PUMP, NAVIEN READY LINK COMMUNICATION CABLE, REMOTE CONTROLLER, NAVIEN PLUMB EASY VALVE SET, PRESSURE RELIEF VALVE, CONDENSATE DRAIN HOSE, CONDENSATE NEUTRALIZER, VENT TERMINATORS. SET AT 135-140 DEGREES F. | |

| KITCHEN EQUIPMENT SCHEDULE | | | | |
|----------------------------|-------------------|--------------|-----------|--|
| ID | DESCRIPTION | MANUFACTURER | MODEL | REMARKS |
| DW | DW | By Others | By Others | OWNER FURNISHED, CONTRACTOR INSTALLED. CONNECT TO HW AND DRAIN PIPING AS REQUIRED. PROVIDE ALL PIPING AND ACCESSORIES AS REQUIRED TO MKAE CONNECTIONS. |
| HS | Hand Sink | By Others | By Others | PROVIDED BY KITCHEN EQUIPMENT SUPPLIER. PROVIDE GRID DRAIN WITH 1-1/2" TAILPIECE, CHROME PLATED CAST BRASS P-TRAP WITH CLEANOUT, CHROME PLATED ANGLE STOPS AND RISERS, CONCEALED ARM FLOOR MOUNTED LAVATORY CARRIER. |
| HS-1 | Hand Sink | By Others | By Others | PROVIDED BY KITCHEN EQUIPMENT SUPPLIER. PROVIDE GRID DRAIN WITH 1-1/2" TAILPIECE, CHROME PLATED CAST BRASS P-TRAP WITH CLEANOUT, CHROME PLATED ANGLE STOPS AND RISERS. |
| S-1 | Commercial Sink | By Others | By Others | PROVIDED BY KITCHEN EQUIPMENT SUPPLIER. INSTALLED BY GENERAL CONTRACTOR. PROVIDE (3) 1-1/2" TAILPIECES, WASTE MANIFOLD PIPING, CHROME PLATED ANGLE STOPS AND RISERS. |
| S-2 | PRE-RINSE | By Others | By Others | PROVIDED BY KITCHEN EQUIPMENT SUPPLIER. INSTALLED BY GENERAL CONTRACTOR. PROVIDE 2" TAILPIECE, WASTE PIPING, CHROME PLATED ANGLE STOPS AND RISERS. |
| S-3 | VEGETABLE SINK | By Others | By Others | PROVIDED BY KITCHEN EQUIPMENT SUPPLIER. INSTALLED BY GENERAL CONTRACTOR. PROVIDE 2" TAILPIECE, WASTE PIPING, CHROME PLATED ANGLE STOPS AND RISERS. |
| SODA | Soda Dispenser | By Others | By Others | Indirect Waste To Floor Sink By Plumbing Contractor |
| WATER FILTER | Water Filtration+ | By Others | By Others | Indirect Waste To Floor Sink By Plumbing Contractor |

| Domestic Fixture Schedule | | | | | | | | | | |
|---------------------------|--------------|--------------|----------|---------------------|-------------------|----------------------|--------|--------------------------------|-----------------|--|
| ID | Description | Manufacturer | Model | Product Type | Installation Type | Material Description | Finish | Trim | | Product Specification |
| | | | | | | | | Manufacturer MN | Manufacturer MN | |
| FPWH | Hose Bibb | Woodford | Model 65 | Freezeless Exterior | | | | | | EXTERIOR HOSE BIBB, 3/4" HOSE NOZZLE OUTLET, KEY OPERATED, INTEGRAL VACUUM BREAKER. |
| HWC | Water Closet | TOTO | DRAKE | Tank ADA | Floor Set | White Vitreous China | White | | | 1.6 GALLON FLUSH, 17" HIGH ELONGATED BOWL, FLOOR MOUNTED, FLOOR OUTLET, TANK TYPE, VITREOUS CHINA, G-MAX FLUSHING SYSTEM, OPEN FRONT SEAT WITH CHECK HINGE AND LESS COVER, CHROME PLATED ANGLE STOP AND RISER, HANDLE ON WIDE SIDE OF FIXTURE. |
| L-1 | Lavatory | TOTO | LT307 | Wall Hung ADA | Wall Mount | White Vitreous China | White | TOTO TEL105-C20ET FAUCET | | WALL HUNG, VITREOUS CHINA, ASSE 1070 APPROVED THERMAL MIXING FAUCET, 20 SECOND DISCHARGE WHEN ACTIVATED, 0.5 GPM, FLOW AERATOR, OFFSET GRID DRAIN WITH 1-1/4" TAILPIECE, CHROME PLATED CAST BRASS P-TRAP WITH CLEANOUT (MOUNTED PARALLEL TO WALL), CHROME PLATED ANGLE STOPS AND RISERS, FLOOR MOUNTED CONCEALED ARM LAVATORY SUPPORT, INSULATE EXPOSED DRAIN, WATER SUPPLIES, AND VALVES WITH PROWRAP SEAMLESS MOLDED CLOSED CELL VINYL INSULATION. |
| MB | Sink | FIAT | MSB-2424 | Janitor | Floor Set | Molded Stone | White | STERN WILLIAMS #T-10-VB FAUCET | | 2" DRAIN, 24"x24" BASIN, VINYL BUMPER GUARD, STERN WILLIAMS #T-10-VB FAUCET, SPRING CHECKS, VACUUM BREAKER, INTEGRAL STOPS, WALL BRACE & PAIL HOOK, WALL BRACKET WITH 30" HOSE. |
| RH | Hydrant | Woodford | RHY2-MS | Freezeless Exterior | Roof | | | | | WITH ROOF MOUNTING SYSTEM, DUAL CHECK BACKFLOW PREVENTER WITH 3/4" HOSE CONNECTION, ASSE 1062 LISTED. |

| ROOF/FLOOR DRAIN SCHEDULE | | | | |
|---------------------------|--------------|-----------|------------------|--|
| Identity Type Mark | Manufacturer | Model | Description | Product Specification |
| DS | ZURN | ZANB199 | Downspout Nozzle | ALL NICKEL-BRONZE BODY, AND DECORATIVE FACE OF WALL FLANGE AND OUTLET NOZZLE. |
| FD | ZURN | EZ | Floor Drain | PVC FLOOR DRAIN WITH ADJUSTABLE TOP AND NICKEL-BRONZE STRAINER. |
| FD-1 | ZURN | EZ | Floor Drain | PVC FLOOR DRAIN WITH ADJUSTABLE TOP AND NICKEL-BRONZE STRAINER. PROVIDE ZURN ZSHIELD TRAP GUARD. |
| FS | Sioux Chief | 861 | Floor Sink | SQUARE PVC FLOOR SINK WITH STAINLESS STEEL MESH DEBRIS SCREEN, PVC HALF OPEN STRAINER. |
| ORD | ZURN | Z-100F | Roof Drain | CAST IRON BODY, FLASHING CLAMP, GRAVEL STOP, UNDERDECK CLAMP, SUMP RECEIVER, AND POLYETHYLENE DOME. |
| RD | ZURN | Z-100F-89 | Roof Drain | CAST IRON BODY, FLASHING CLAMP, GRAVEL STOP, UNDERDECK CLAMP, SUMP RECEIVER, POLYETHYLENE DOME, AND 2" HIGH WATER DAM. |
| TD-3 | ZURN | Z-886-PS | Trench Drain | MEDIUM DUTY, 75% PRE-SLOPED FIBERGLASS TRENCH DRAIN, 36-INCH LENGTH, BOTTOM OUTLET, 6" WIDE, CLASS A MEDIUM DUTY PERFORATED STAINLESS STEEL GRATE. |

| PLUMB BRANCH PIPING SCHEDULE | | | | |
|------------------------------|-------|--------|------|------|
| FIXTURE | WASTE | VENT | CW | HW |
| WATER CLOSET | 3" | 2" | 1/2" | -- |
| LAVATORY | 2" | 1-1/2" | 1/2" | 1/2" |
| SINK | 2" | 1-1/2" | 1/2" | 1/2" |
| FLOOR DRAIN | 2" | 2" | -- | -- |
| MOP BASIN | 2" | 2" | 3/4" | 3/4" |

NOTE: INDIVIDUAL VENTS FOR FIXTURES ON PLANS AND RISER DIAGRAMS HAVE BEEN INCREASED WHERE HORIZONTAL VENT LENGTH IS IN EXCESS OF THE MAXIMUM DISTANCE INDICATED BY THE CODE.

| GAS DEMAND SCHEDULE | | | |
|------------------------------------|--------------|------------------|----------|
| MARK | EQUIPMENT | GAS INPUT (BTUH) | |
| | | NEW | EXISTING |
| DOAS-1 | DOAS UNIT | 208,200 | |
| RTU-1 | ROOFTOP UNIT | 250,000 | |
| WH-1 | WATER HEATER | 199,000 | |
| WH-2 | WATER HEATER | 199,000 | |
| FRYER | FRYER | 160,000 | |
| TOTAL BTU/HR | | 1,016,200 | 0 |
| NEW TOTAL BTU/HR (EXISTING AND...) | | 1,016,200 | |
| NEW TOTAL CFH (EXISTING AND NEW) | | 1,016 | |
| MAXIMUM DEVELOPMENT LENGTH > | | 90 FT | |
| MINIMUM SIZE OF GAS LINE REQUIRED | | 1" DIA. | |

NOTE
GAS LINE SIZED AS PER TABLE 402.4 OF IFGC FOR PRESSURE OF 2 PSI.

| FIXTURE | NO. | DRAIN | | COLD WATER | | HOT WATER | |
|-------------------|-----|--------|--------------|------------|------------|-----------|------------|
| | | D.F.U. | TOTAL D.F.U. | F.U. C.W. | TOTAL C.W. | F.U. H.W. | TOTAL H.W. |
| WATER CLOSET | 2 | 4 | 8 | 5 | 10 | -- | -- |
| LAVATORY | 2 | 1 | 2 | 1.5 | 3 | 1.5 | 3 |
| HAND SINK | 4 | 2 | 8 | 1.5 | 6 | 1.5 | 6 |
| PREP SINK * | 1 | -- | -- | 2 | 2 | 2 | 2 |
| PRE RINSE SINK * | 1 | -- | -- | 2 | 2 | 2 | 2 |
| 3 - COMP SINK * | 1 | -- | -- | 3 | 3 | 3 | 3 |
| DISHWASHER | 1 | -- | -- | -- | -- | 2 | 2 |
| FLOOR DRAIN | 6 | 2 | 12 | -- | -- | -- | -- |
| FLOOR SINK | 9 | 6 | 54 | -- | -- | -- | -- |
| WALL/ROOF HYDRANT | 3 | -- | -- | 2.5 | 5 | -- | -- |
| MOP SINK | 1 | 2 | 2 | 2.25 | 2.25 | 2.25 | 2.25 |
| TOTAL | - | - | 86 | -- | 33.25 | -- | 20.25 |

PROBABLE DEMANDS/ AND PIPE SIZING REQUIREMENTS:
BASED ON 2018 IPC. *FIXTURE HAS INDIRECT WASTE TO FLOOR SINK

COLD WATER: 53.5 FU = 30.2 GPM
DRAIN: 86 DFU

USE 1-1/2" CW SERVICE
USE 4" SANITARY (MIN)

| EXPANSION TANK SCHEDULE | | | | |
|-------------------------|--------------|-------|---|--|
| Identity Mark | Manufacturer | Model | Description | |
| ET | Amrol | ST-8 | 3.2 GALLON EXPANSION TANK WITH DIAPHRAM | |

| GREASE INTERCEPTOR SCHEDULE | | | | |
|-----------------------------|--------------|--------|--|--|
| Identity Mark | Manufacturer | Model | Description | |
| GI | Schier | GB-250 | 250 GALLON NOMINAL HYDROMECHANICAL GREASE INTERCEPTOR, (2) 24" DIAMETER MANHOLE RISERS AND RINGS WITH GAS TIGHT COVERS, AND ASSOCIATED PIPING PER LOCAL CODE REQUIREMENTS. | |

GREASE INTERCEPTOR CALCULATIONS

Quote: 64DA92F6

Reference No. 74399 Project Name: 24630 Freddy's - Bentonville

Step 1: Flow rate to grease interceptor
Fixture flow rate: (cu in / 231) = gal x 0.75 / 2 min = 2 min flow rate

| NAME | TYPE | DIMENSIONS | QTY | CU IN | FLOW RATE |
|-------------------------|-------------------------|---------------------|-----|--------|-----------|
| 3 Compartment Sink | 3 Compartment Sink | 21" x 16" x 12" (3) | 1 | 12,096 | 19.64 GPM |
| Hand Sink | Hand Sink | 10" x 14" x 5" | 2 | 1,400 | 2.28 GPM |
| Mop Basin | Mop Basin | 24" x 24" x 10" | 1 | 5,760 | 9.35 GPM |
| Pre-Rinse Sink One Bowl | Pre-Rinse Sink One Bowl | 21" x 21" x 14" | 1 | 6,174 | 10.02 GPM |
| Prep Sink One Bowl | Prep Sink One Bowl | 20" x 16" x 10" | 1 | 3,200 | 5.19 GPM |

Total 46.48 GPM

Step 2: Grease Production
Servings per day x Grease production value x Days between pump-outs = Grease output

Servings per day: 400
Grease production value: 0.035 lbs per serving (Fast Food - Full Prep: High / No flatware)
Days between pump-outs: 90 days

400 x 0.035 x 90 = 1260 lbs of FOG

| SCHIER MODEL | Description: |
|---------------|--|
| GB-250 | GREASE INTERCEPTOR 100 GPM / 200 GPM, 4" PLAIN/FPT CONNECTIONS, H-20 RATED PICKABLE CAST IRON COVERS |
| | Dimensions: Length: 87", Width: 33", Height: 44" |
| | Flow Rate/Grease Capacity: 100 GPM / 1895 lbs |
| | Liquid Capacity: 277 gal |

Specification Note: This Great Basin model has been sized to the flow rate and grease production requirements of the application and may not be substituted by liquid capacity alone. Any substitution requests must be approved by the specifying engineer and the authority having jurisdiction.

Please contact support@schierproducts.com for technical and procurement support for the specified Great Basin model.

BC PROJECT # 24630
ARKANSAS FE CDA #806

This drawing has been prepared by the Engineer, or under his supervision. This drawing is provided as an instrument of service by the Designer/Engineer and is intended for use on this project only. Pursuant to the Architectural Works Copyright Protection Act of 1990, all drawings, specifications, data and designs, including the overall form, arrangement and composition of spaces and elements appearing herein, constitute the original, copyrighted work of the Designer/Engineer. Any reproduction, use, or disclosure of information contained herein without prior written consent of the Engineer is strictly prohibited. © 2024 BC Engineers, Inc.



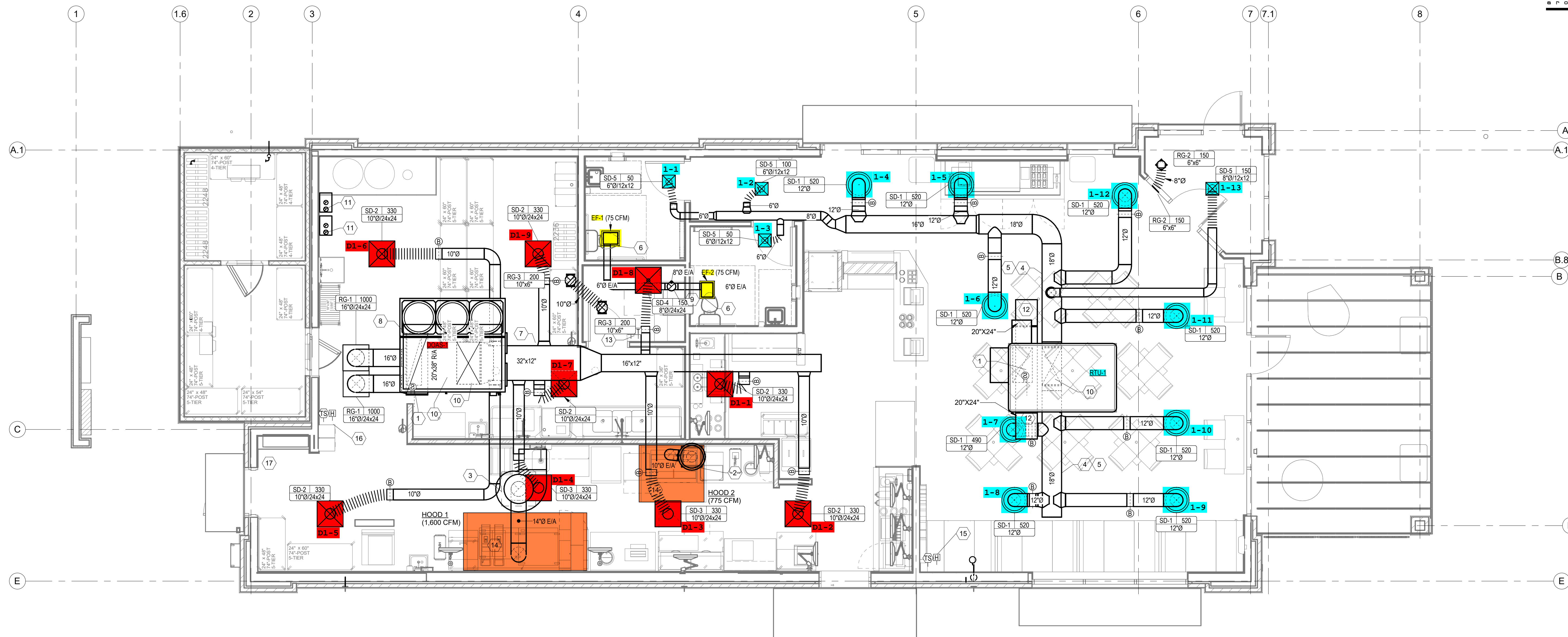
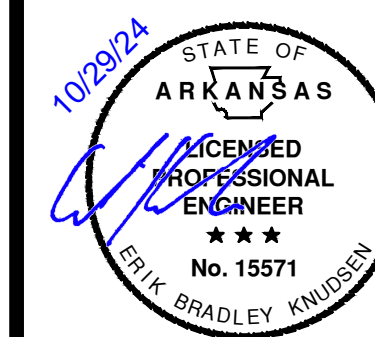
5720 Reeder Shawnee, KS 66203 (913)282-1772

a new restaurant for:
Freddy's
3308 SW 14TH ST Bentonville, AR 71712

date
10/23/2024
drawn by
AK/FO
checked by
DS/EK
revisions

sheet number
P-302

drawing type
Permit
project number
23006.26



1 LEVEL 1 HVAC PLAN
M-100 1/4" = 1'-0"

OUTDOOR AIR CALCULATIONS

| UNIT | Area (sqft) | OCCUPANCY CLASSIFICATION | Occupant Density #/1000 sqft | People outdoor airflow rate in breathing zone, (Rp) cfm/person | Area outdoor airflow rate in breathing zone, (Ra) cfm/sqft | Exhaust airflow rate cfm/sqft | Breathing zone outdoor airflow (Vbz) | Zone air distribution effectiveness (Ez) | Zone outdoor airflow (cfm) |
|-------|-------------|--------------------------|------------------------------|--|--|-------------------------------|--------------------------------------|--|----------------------------|
| RTU-1 | 1100 | Dining rooms | 70 | 7.5 | 0.18 | | 776 | 0.8 | 969 |
| | 150 | Corridors | 0 | 0 | 0.06 | | 9 | 0.8 | 11 |
| | | | | | | | | | Total 981 |

AIR BALANCE SCHEDULE

| SUPPLY AIR UNIT | OUTSIDE AIRFLOW (CFM) | RETURN AIRFLOW (CFM) | SUPPLY AIRFLOW (CFM) | OA/SA % | EXHAUST AIR UNIT | EXHAUST AIRFLOW (CFM) |
|-----------------------------------|-----------------------|----------------------|----------------------|---------------|------------------|-----------------------|
| RTU-1 | 981 | 4,019 | 5,000 | 19.6% | KEF-1 | 1600 |
| DOAS-1 | 2,300 | 0 | 2,300 | 100.0% | KEF-2 | 775 |
| | | | | | EF-1, EF-2 | 150 |
| TOTAL | 3,281 | 4,019 | 7,300 | 44.95% | TOTAL | 2,525 |
| RESULTING BUILDING PRESSURIZATION | | | | | | 756 CFM |

THE BUILDING HVAC SYSTEM SHALL BE BALANCED BY NATIONAL TAB HIRED BY THE OWNER. CONTACT Dan Hertenstein - National TAB at: 816-215-1593 - DAN@NATIONALTAB.COM

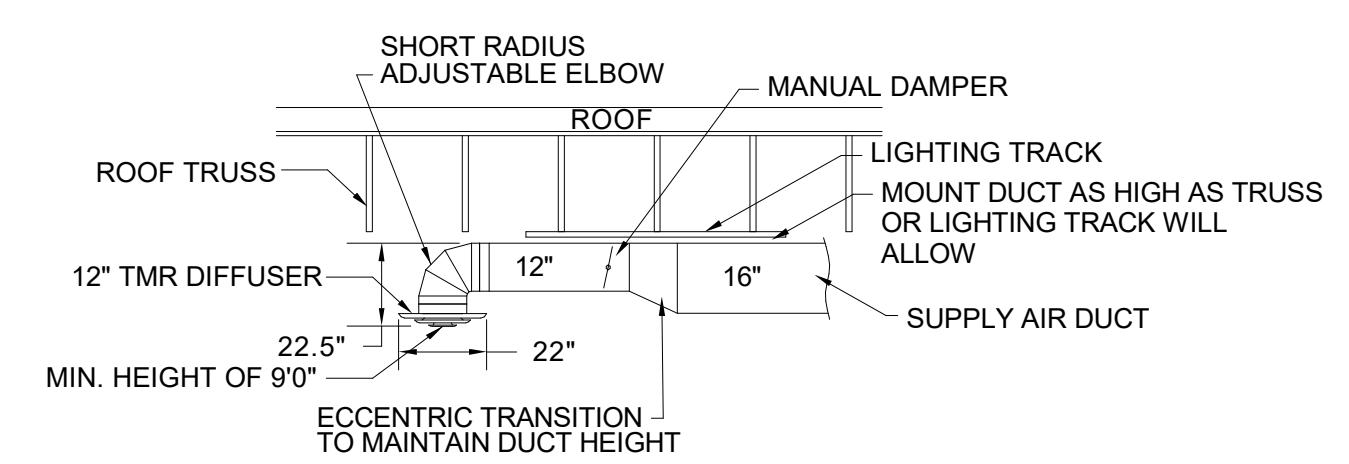
THE RTU SUPPLY FANS SHALL OPERATE IN SINGLE ZONE VAV MODE WITH 2 STAGES OF FAN CONTROL. LOW SPEED SHALL BE USED DURING PERIODS OF LOW COOLING LOAD AND VENTILATION ONLY OPERATION PER 2018 IECC REQUIREMENTS.

THE ECONOMIZER DAMPERS SHALL HAVE TWO POSITIONS DEPENDENT ON THE FAN SPEED TO MAINTAIN CONSTANT OUTDOOR AIR VOLUME AND BUILDING PRESSURE. REFER TO THE BUILDING AIR BALANCE SCHEDULE ON SHEET M-200.

THE UNIT SHALL HAVE ITS FRESH AIR HEATING OPTION ENABLED TO HEAT VENTILATION AIR TO A NEUTRAL VALUE DURING COLD WEATHER OPERATION. REFER TO THE MANUFACTURERS PROGRAMMING DOCUMENTATION FOR SETUP INSTRUCTIONS.

MECHANICAL PLAN NOTES

- LOCATION OF FACTORY DUCT MOUNTED SMOKE DETECTOR IN RETURN OF RTU. PROVIDE REMOTE ENUNCIATOR AUDIOVISUAL. VERIFY LOCATION WITH FIRE MARSHAL PRIOR TO INSTALLATION. REFER TO SPEC SHEET MPO FOR ADDITIONAL INFORMATION.
- TRANSITION AND CONNECT 10" DIAMETER GREASE DUCT TO EXHAUST HOOD. ROUTE DUCT UP AND CONNECT TO EXHAUST FAN. OFFSET AS NECESSARY TO MISS ROOF STRUCTURE. AND TO MAINTAIN 10'-0" CLEARANCE FROM ALL OUTDOOR AIR INTAKES AND 5'-0" FROM PARAPET WALLS. ALL GREASE DUCT IS TO BE INSTALLED WITH DUCT WRAP AS DETAILED AND PER THE MANUFACTURERS REQUIREMENTS FOR 0" CLEARANCE TO COMBUSTIBLES. REFER TO ROOF PLAN M-101 FOR CONTINUATION.
- TRANSITION AND CONNECT 14" DIAMETER GREASE DUCT TO EXHAUST HOOD. ROUTE DUCT UP AND CONNECT TO EXHAUST FAN. OFFSET AS NECESSARY TO MISS ROOF STRUCTURE. AND TO MAINTAIN 10'-0" CLEARANCE FROM ALL OUTDOOR AIR INTAKES AND 5'-0" FROM PARAPET WALLS. ALL GREASE DUCT IS TO BE INSTALLED WITH DUCT WRAP AND ACCESS DOORS AS DETAILED AND PER THE MANUFACTURERS REQUIREMENTS FOR 0" CLEARANCE TO COMBUSTIBLES. REFER TO ROOF PLAN M-101 FOR CONTINUATION.
- COORDINATE DUCT ROUTING WITH LIGHTING. REFER TO SHEET E200.
- EXPOSED DUCTWORK SHALL BE OF PAINTLOCK CONSTRUCTION AND PAINTED PER THE DIRECTION OF ARCHITECT. SUPPORT EXHAUST FAN FROM STRUCTURE AS REQUIRED BY THE MANUFACTURER.
- COORDINATE WITH STRUCTURAL TO BLOCK OUT JOISTS AS REQUIRED TO RUN DUCT THROUGH THE STRUCTURE. RETURN DUCT TO BE ROUTED BETWEEN JOISTS, AS HIGH AS STRUCTURE WILL ALLOW.
- ROUTE 6" EXHAUST DUCT UP THROUGH ROOF TO ROOF CAP. MAINTAIN 10'-0" CLEARANCE TO ALL OUTDOOR AIR INTAKES. SEAL PENETRATION WEATHERTIGHT.
- DUCT UP THROUGH ROOF. SEE SHEET M101 FOR CONTINUATION. OPENING TO BE CUT BETWEEN TRUSSES AS REQUIRED. FIELD VERIFY EXACT LOCATION PRIOR TO CUTTING THE ROOF. SEAL PENETRATION WEATHERTIGHT AS REQUIRED.
- PROVIDE 3" PVC FLUE AND COMBUSTION AIR INTAKE PIPE FOR HOT WATER HEATER THROUGH ROOF. PROVIDE MANUFACTURERS TERMINATION KIT. SEAL PENETRATION WEATHERTIGHT. VERIFY 10'-0" CLEARANCE FROM ALL OUTDOOR AIR INTAKES.
- RETURN AIR DUCT LOCATED BETWEEN ROOF TRUSSES. OPEN END OF DUCTWORK TURNED UP TOWARD STRUCTURE WITH A MINIMUM 6" CLEARANCE TO DECK.
- LOCATION OF RTU/DOAS THERMOSTATS. GC TO LABEL EACH THERMOSTAT.
- EXHAUST HOOD PROVIDED BY OTHERS. INSTALLED BY THIS CONTRACTOR PER THE MANUFACTURERS INSTRUCTIONS.
- LOCATION OF REMOTE TEMPERATURE AND HUMIDITY SENSOR FOR RTU. INSTALL AT 9' AFF.
- LOCATION OF DOAS TEMPERATURE SENSOR AND HUMIDISTAT MOUNTED AT 7' AFF.
- LOCATION OF MANUAL PULL STATION. INSTALL PER THE MANUFACTURERS REQUIREMENTS. CONFIRM LOCATION WITH LOCAL FIRE MARSHAL PRIOR TO INSTALLATION.



2 DINING ROOM DIFFUSER DETAIL
M-100 NO SCALE

BC PROJECT # 24630
ARKANSAS FE CDA 4805

This drawing has been prepared by the Engineer, or under his supervision. This drawing is provided as an instrument of service by the Designer/Engineer and is intended for use on this project only. Pursuant to the Architectural Works Copyright Protection Act of 1990, all drawings, specifications, files and designs, including the overall form, arrangement and composition of letters and elements appearing hereon, constitute the original, copyrighted work of the Designer/Engineer. Any reproduction, use, or disclosure of information contained herein without prior written consent of the Engineer is strictly prohibited. © 2024 BC Engineers, Inc.

BC ENGINEERS INCORPORATED
5720 Reeder Shawnee, KS 66203 (913)282-1772

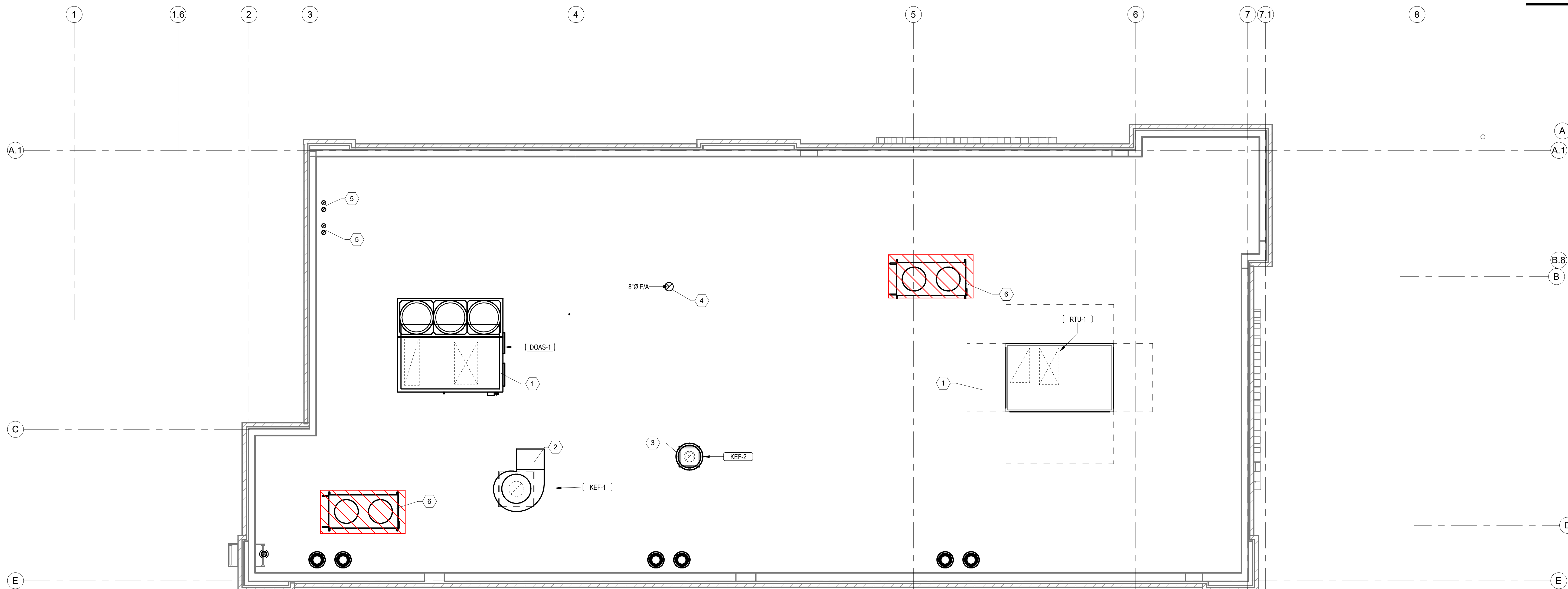
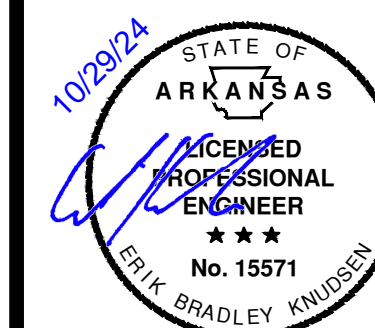
a new restaurant for:
Freddy's

3308 SW 14TH ST Bentonville, AR 71712

date
10/23/2024
drawn by
AK/FO
checked by
DS/EK
revisions

sheet number
M-100

drawing type
Permit
project number
23006.26



1 MECHANICAL ROOF PLAN
M-101 1/4" = 1'-0"

- MECHANICAL PLAN NOTES**
- 1 PROVIDE RTU/DOAS IN LOCATION AS SHOWN ON PLANS. COORDINATE EXACT RTU LOCATION AND DUCT DROPS WITH STRUCTURAL TRUSS LAYOUT. MAINTAIN MINIMUM 10'-0" CLEARANCE BETWEEN OUTDOOR AIR INTAKES AND EXHAUST TERMINATIONS.
 - 2 PROVIDE TYPE I EXHAUST FAN IN LOCATION AS SHOWN ON PLANS. CONNECT 1" DIAMETER EXHAUST DUCT FROM EXHAUST HOOD UP TO KEF-1 ON ROOF. COORDINATE EXHAUST DUCT ROUTING WITH STRUCTURAL TRUSS LAYOUT.
 - 3 PROVIDE TYPE I EXHAUST FAN IN LOCATION AS SHOWN ON PLANS. CONNECT 10" DIAMETER EXHAUST DUCT FROM EXHAUST HOOD UP TO KEF-2 ON ROOF. COORDINATE EXHAUST DUCT ROUTING WITH STRUCTURAL TRUSS LAYOUT.
 - 4 8" EXHAUST DUCT ROUTED TO ROOF CAP AS REQUIRED.
 - 5 PROVIDE MANUFACTURER'S CONCENTRIC TERMINATION VENT KIT SERVING HOT WATER HEATER BELOW. INSTALL IN STRICT ACCORDANCE WITH MANUFACTURER'S REQUIREMENTS. ENSURE AT LEAST 10'-0" DISTANCE BETWEEN OUTDOOR AIR INTAKES.
 - 6 ~~MOUNT CONDENSING UNIT ON ROOF AS DETAILED AND AS REQUIRED BY THE MANUFACTURER. CONNECT REFRIGERANT PIPING TO CONDENSING UNIT AS REQUIRED BY THE MANUFACTURER. SEE SHEET M-200 FOR MOUNTING DETAIL. CONNECT TO ROOF STRUCTURE PER THE STRUCTURAL DRAWINGS.~~
ICE CONDENSERS REMOVED

BC PROJECT # 24630
ARKANSAS FE CDA #806

This drawing has been prepared by the Engineer, or under his supervision. This drawing is provided as an instrument of service by the Designer/Engineer and is intended for use on this project only. Pursuant to the Architectural Works Copyright Protection Act of 1990, all drawings, specifications, data and designs, including the overall form, arrangement and composition of spaces and elements appearing herein, constitute the original, copyrighted work of the Designer/Engineer. Any reproduction, use, or disclosure of information contained herein without prior written consent of the Engineer is strictly prohibited. © 2024 BC Engineers, Inc.

BC ENGINEERS INCORPORATED

5720 Reeder Shawnee, KS 66203 (913)282-1772

a new restaurant for:
Freddy's

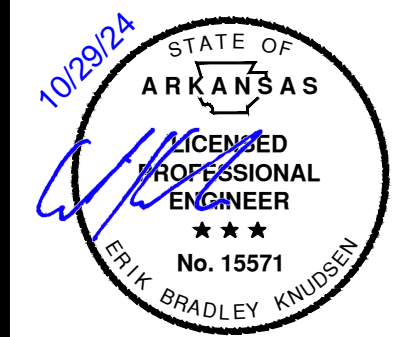
3308 SW 14TH ST Bentonville, AR 71712

date
10/23/2024
drawn by
AK/FO
checked by
DS/EK
revisions

sheet number

M-101

drawing type
Permit
project number
23006.26



| ROOFTOP UNIT | | | | | | | | | | | | | | | | | | | | | | | |
|--------------|--------------|-----------|----------|------------------------|---------|--------------|--------------|----------|-------------------|----------------|--------------|--------------|----------------|-------------------|--------------|---------------|--------|-----------------|---------------------|--------------------|---------|-------|------|
| MARK | MANUFACTURER | MODEL NO. | EVAP CFM | EXT. STATIC P. IN. WG. | COOLING | | | | | HEATING | | | ELECTRICAL | | | | | SUPPLY FAN TYPE | MINIMUM OUTDOOR AIR | TOTAL WEIGHT (LBS) | IEER | NOTES | |
| | | | | | STAGES | TOTAL | SENSIBLE | AMB | EVAP/EAT DBWB | HOT GAS REHEAT | INPUT | OUTPUT | HEATING STAGES | VOLT/PH/Hz | BLOWER MOTOR | POWER EXHAUST | MCA | | | | | | MOCP |
| RTU-1 | Trane | YSK-150 | 5000 CFM | 1.000 | 3 | 141010 Btu/h | 104390 Btu/h | 105.0 °F | 80.0 °F / 67.0 °F | Yes | 250000 Btu/h | 202500 Btu/h | 2 | 208 V / 3 / 60 Hz | 4.60 hp | Yes | 67.0 A | 90.0 A | VFD | 981 CFM | 1540 lb | 14 | 1-8 |

| ALTERNATE ROOFTOP UNIT MANUFACTURER | | | | | | | | | | | | | | | | | | | | | | | |
|-------------------------------------|--------------|-----------|----------|------------------------|---------|--------------|--------------|---------|-------------------|----------------|--------------|--------------|----------------|-------------------|--------------|---------------|--------|-----------------|---------------------|--------------------|-----------|----------|------|
| MARK | MANUFACTURER | MODEL NO. | EVAP CFM | EXT. STATIC P. IN. WG. | COOLING | | | | | HEATING (GAS) | | | ELECTRICAL | | | | | SUPPLY FAN TYPE | MINIMUM OUTDOOR AIR | TOTAL WEIGHT (LBS) | SEER/IEER | NOTES | |
| | | | | | STAGES | TOTAL | SENSIBLE | AMB | EVAP/EAT DBWB | HOT GAS REHEAT | INPUT | OUTPUT | HEATING STAGES | VOLT/PH/Hz | BLOWER MOTOR | POWER EXHAUST | MCA | | | | | | MOCP |
| RTU-1 | YORK | Z115024D | 5000 CFM | 1.000 | 2 | 154800 Btu/h | 116100 Btu/h | 95.0 °F | 80.0 °F / 67.0 °F | Yes | 240000 Btu/h | 192000 Btu/h | 2 | 208 V / 3 / 60 Hz | 5.00 hp | Yes | 71.0 A | 90.0 A | VFD | 981 CFM | 1363 lb | 0 / 10.8 | 1-8 |

- NOTES:**
- PROVIDE DIGITAL CONTROLS, HIGH PERFORMANCE WITH FDD OUTDOOR AIR ECONOMIZER WITH DRY BULB CONTROL, SINGLE ZONE VAV (MSAV), BAROMETRIC RELIEF DAMPER, TIME DELAY ON COMPRESSOR RE-START, CRANKCASE HEATER, BAROMETRIC RELIEF DAMPER, DRAIN PAN OVERFLOW SWITCH, DISCHARGE AIR TEMPERATURE SENSING, HINGED ACCESS DOORS, SMOKE DETECTOR MOUNTED IN RETURN, AND STANDARD COOLING DOWN TO 0°F FOR EACH UNIT. OUTDOOR AIR DAMPER TO FULLY CLOSE W/ FAN SHUTDOWN FOR ALL UNITS.
 - EXTERNAL STATIC PRESSURE LISTED REPRESENTS STATIC PRESSURE REQUIRED FOR DUCTWORK AND DIFFUSERS OUTSIDE THE HVAC UNIT COMPLETELY INDEPENDENT OF ANY PRESSURE DROP THROUGH THE HVAC EQUIPMENT INCLUDING BUT NOT LIMITED TO FILTERS, COILS AND ECONOMIZERS. THE FAN AND MOTOR SHALL BE SIZED APPROPRIATELY TO MEET THIS DEFINITION OF EXTERNAL STATIC PRESSURE.
 - PROVIDE COMMERCIAL 7-DAY PROGRAMMABLE HEAT/COOL/AUTO CHANGEOVER THERMOSTAT WITH ECONOMIZER OUTPUT AND REMOTE, TEMPERATURE AND HUMIDITY SENSOR FOR EACH UNIT (HONEYWELL VISION PRO 8000 OR EQUAL), ECONOMIZER/OUTDOOR AIR DAMPER IS TO CLOSE DURING UNOCCUPIED HOURS.
 - PROVIDE 14" HIGH (AT LOWEST POINT) PRE-FABRICATED INSULATED ROOF CURB.
 - PROVIDE HAIL GUARDS FOR EACH UNIT.
 - PROVIDE FACTORY INSTALLED UNIT MOUNTED CIRCUIT BREAKERS.
 - MECHANICAL CONTRACTOR SHOULD PROVIDE ALL NEW FILTERS ON DAY OF TURNOVER.
 - PROVIDE HOT GAS REHEAT FOR HUMIDITY CONTROL AND ALL ASSOCIATED ACCESSORY COMPONENTS.

NATIONAL ACCOUNT INFORMATION

FREDDY'S FROZEN CUSTARD HAS NATIONAL ACCOUNT AGREEMENTS FOR ROOF TOP UNITS WITH YORK AND TRANE. NO ALTERNATE MANUFACTURERS ARE ALLOWED.

FOR YORK EQUIPMENT CONTACT:
CHARLIE PITCOCK, NATIONAL ACCOUNT MANAGER, (216)-598-4396
charlie.pitcock@jci.com

FOR TRANE EQUIPMENT EQUAL TO THE UNITS SPECIFIED CONTACT:
SHANE LAFLEUR, NATIONAL ACCOUNT EXECUTIVE, (919) 279-0964
Shane.Lafleur@tranetechnologies.com

FAN SCHEDULE

| ID | LOCATION | MANUFACTURER | MODEL NO. | TYPE | DESIGN AIRFLOW | ESP | FAN | | | VOLT | PH | REMARKS | |
|------|----------|--------------|-------------|------------------------|----------------|-------|------------|---------|-----|------|-------|---------|-------------|
| | | | | | | | DRIVE TYPE | POWER | RPM | | | | |
| EF-1 | Ceiling | Greenheck | SP-A200-390 | Premium (Constant Cfm) | 75 CFM | 0.250 | Direct | 0.08 hp | 900 | Yes | 120 V | 1 | SEE NOTE 1. |
| EF-2 | Ceiling | Greenheck | SP-A200-390 | Premium (Constant Cfm) | 75 CFM | 0.250 | Direct | 0.08 hp | 900 | Yes | 120 V | 1 | SEE NOTE 1. |

NOTES: 1. PROVIDE CEILING GRILLE, INTEGRAL BACKDRAFT DAMPER, AND ROOF CAP.

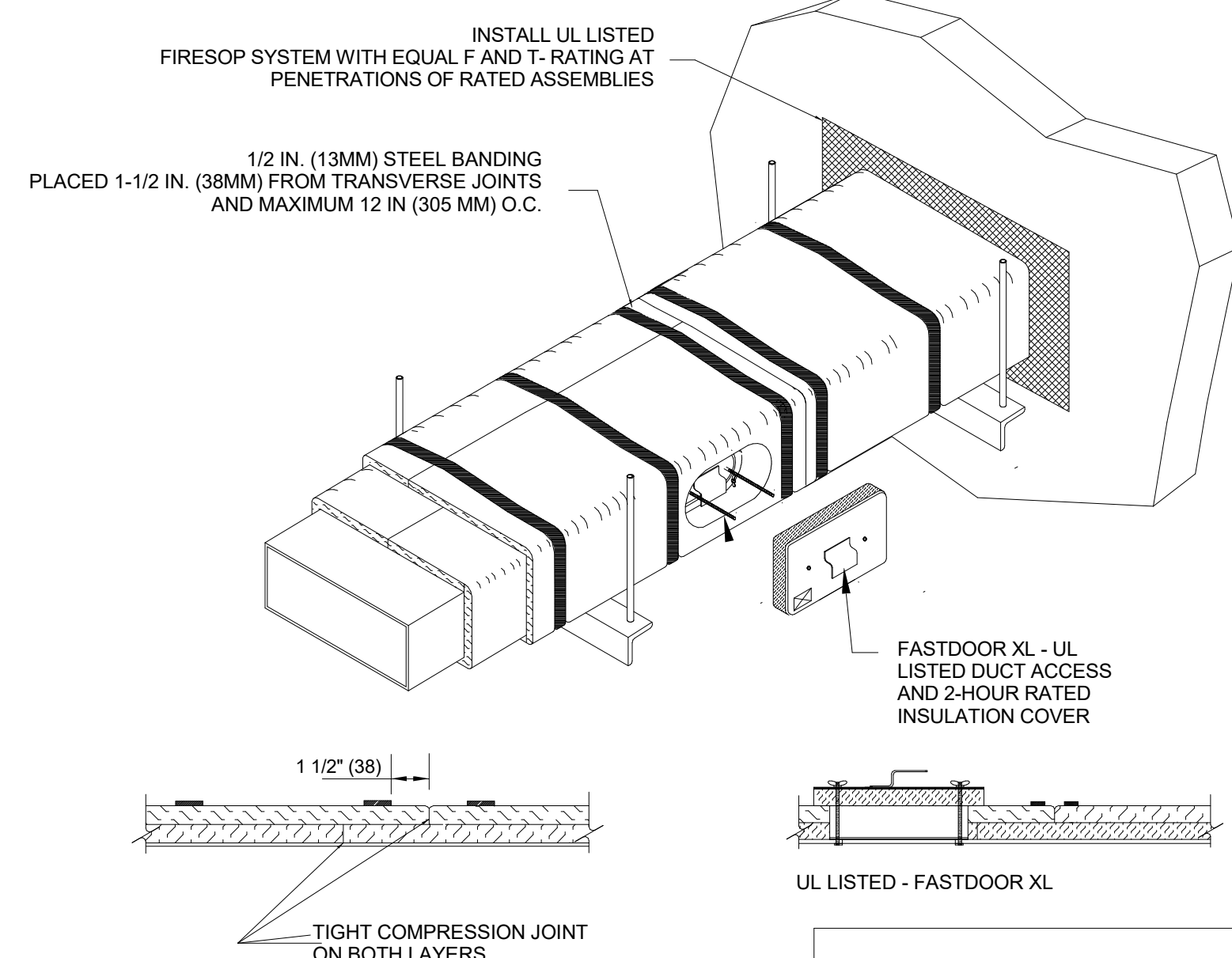
GRILLES, REGISTERS AND DIFFUSERS SCHEDULE

| ID | MANUFACTURER | MODEL | MATERIAL | FINISH | NECK | | | NOTES |
|------|-----------------|---------|----------|--------------|----------|-------|--------|---|
| | | | | | SIZE | WIDTH | HEIGHT | |
| RG-1 | AMER. LOUVER CO | STRATUS | Aluminum | White Enamel | 16" | 0" | 0" | SEE NOTE 1. |
| RG-2 | Titus | 350RL | Steel | White Enamel | 0" | 6" | 6" | PROVIDE RECTANGULAR TO ROUND TRANSITION |
| RG-3 | Titus | 350RL | Steel | White Enamel | 0" | 10" | 6" | PROVIDE RECTANGULAR TO ROUND TRANSITION |
| SD-1 | Titus | TMR | Steel | White Enamel | 12" | 0" | 0" | FIELD PREP FOR PAINTING |
| SD-2 | Titus | TMS-AA | Aluminum | WHITE ENAMEL | 10" | 0" | 0" | |
| SD-3 | Titus | PAR | Steel | White Enamel | 10" | 0" | 0" | RETURN - NO DEFLECTOR |
| SD-4 | Titus | T3SC-4 | Steel | WHITE ENAMEL | 8" | 0" | 0" | THERMAL VAV DIFFUSER |
| SD-5 | Titus | TMS | Steel | White Enamel | <varies> | 0" | 0" | WITH O.B. DAMPER AND TRM KIT |

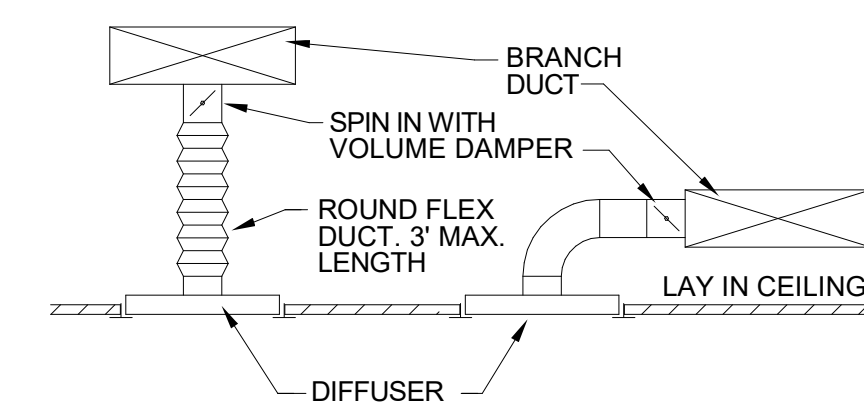
NOTES: 1. RETURN GRILLE TO BE PLASTIC FILTER RETURN, FILTER TO BE AMERICAN AIR FILTER (AAF) FRONTLINE GREEN 1", WITH AAF AMERIFRAME SIZE 20X20X1.

FIRE RATED ENCLOSURE - GREASE DUCTS

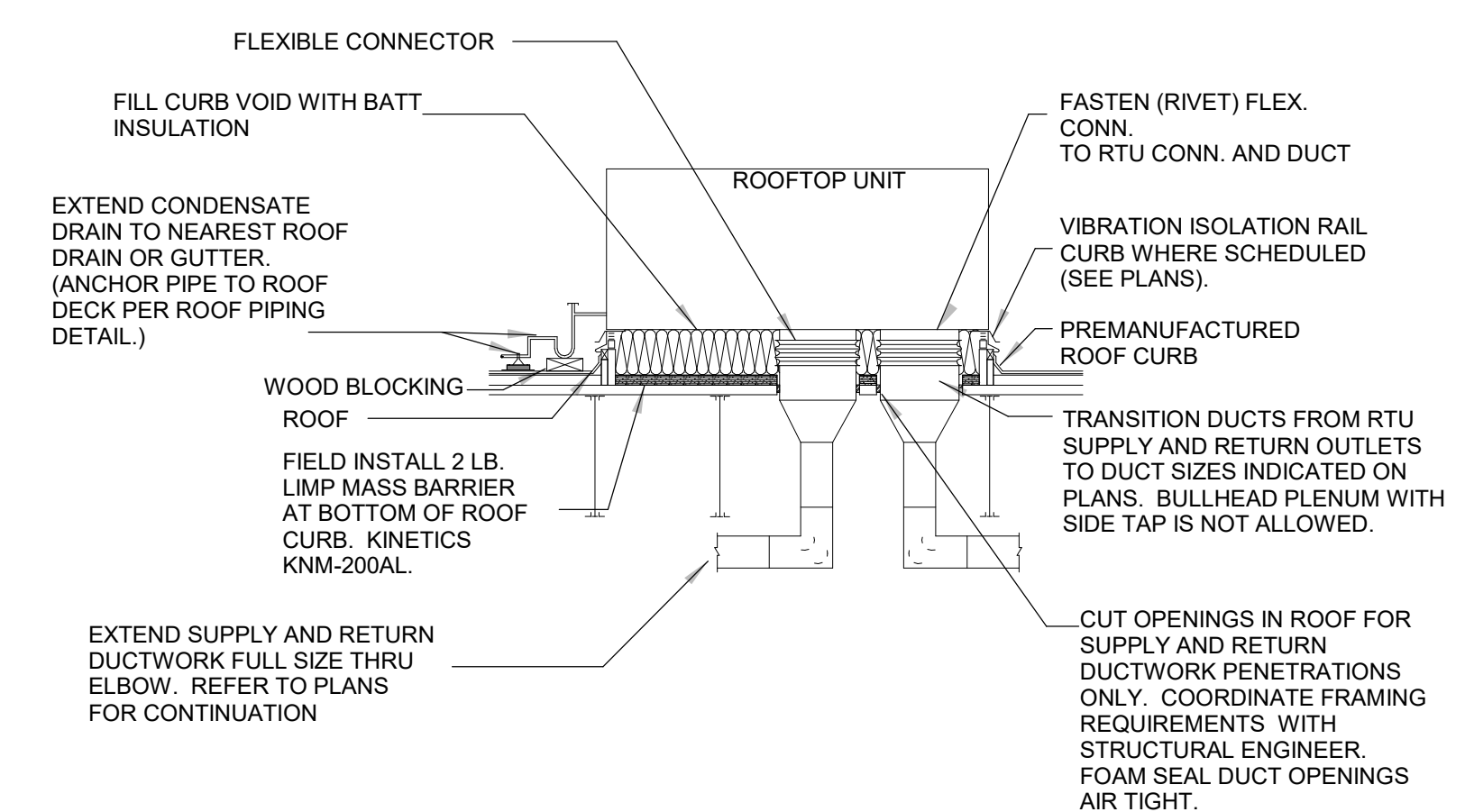
- THERMAL CERAMICS FIREMASTER FASTWRAP XL IS TESTED TO ASTM E2336 AND UL LISTED PER HMT.G18 TO PROVIDE ZERO CLEARANCE TO COMBUSTIBLES AND TO PROVIDE A 1- OR 2- HOUR ENCLOSURE. THROUGH PENETRATIONS FIRESTOP SYSTEMS ARE TESTED IN ACCORDANCE WITH ASTM E 814 (UL 1479). ICC-ES APPROVAL PER REPORT ESR 2213 OR ESR 2832.
- COMPLIANT TO THE FOLLOWING CODES:
NFPA 96
INTERNATIONAL MECHANICAL CODES
UNIFORM MECHANICAL CODE
CALIFORNIA MECHANICAL CODE
- INSULATION APPLIED IN TWO LAYERS WITH TIGHT COMPRESSION JOINT ON BOTH LAYERS AT ALL JOINTS.
- MINIMUM 16 GAUGE CARBON STEEL (OR 18 GAGE STAINLESS STEEL) RECTANGULAR OR ROUND GREASE EXHAUST DUCT
- INSTALL UL LISTED AND LIQUID TIGHT THERMAL CERAMICS FASTDOOR XL ACCESS DOORS AT ALL CHANGES IN DIRECTION AND AT MINIMUM EVERY 20 FT ON HORIZONTAL RUNS.
- SUPPORT HANGER SYSTEMS DO NOT NEED TO BE WRAPPED PROVIDED THE HANGER RODS ARE MINIMUM OF 3/8 IN. DIAMETER AND SUPPORTS ARE MINIMUM 2 X 2 X 1/8 IN. STEEL ANGLE OR SMACNA EQUIVALENT SUPPORT SYSTEM.
- THERMAL CERAMICS DUCT WRAP SHALL BE INSTALLED DIRECTLY ONTO THE DUCT AND APPLIED FROM THE HOOD CONNECTION TO THE CONNECTION TO THE FAN.
- THERMAL CERAMICS DUCT ENCLOSURE SYSTEM SHALL BE INSTALLED IN STRICT ACCORDANCE WITH MANUFACTURERS INSTRUCTIONS AND UL LISTINGS.



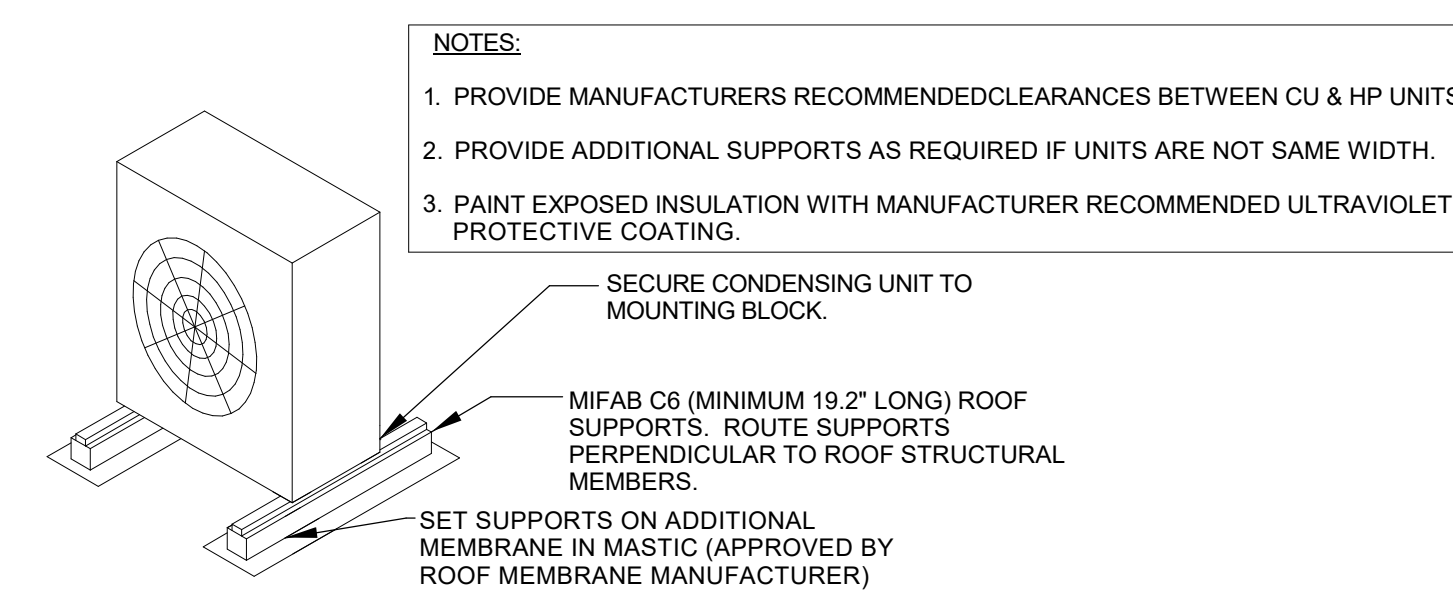
Morgan ThermalCeramics
P.O. Box 923
Augusta, Georgia 30903-0923
Phone: (706) 560-4038



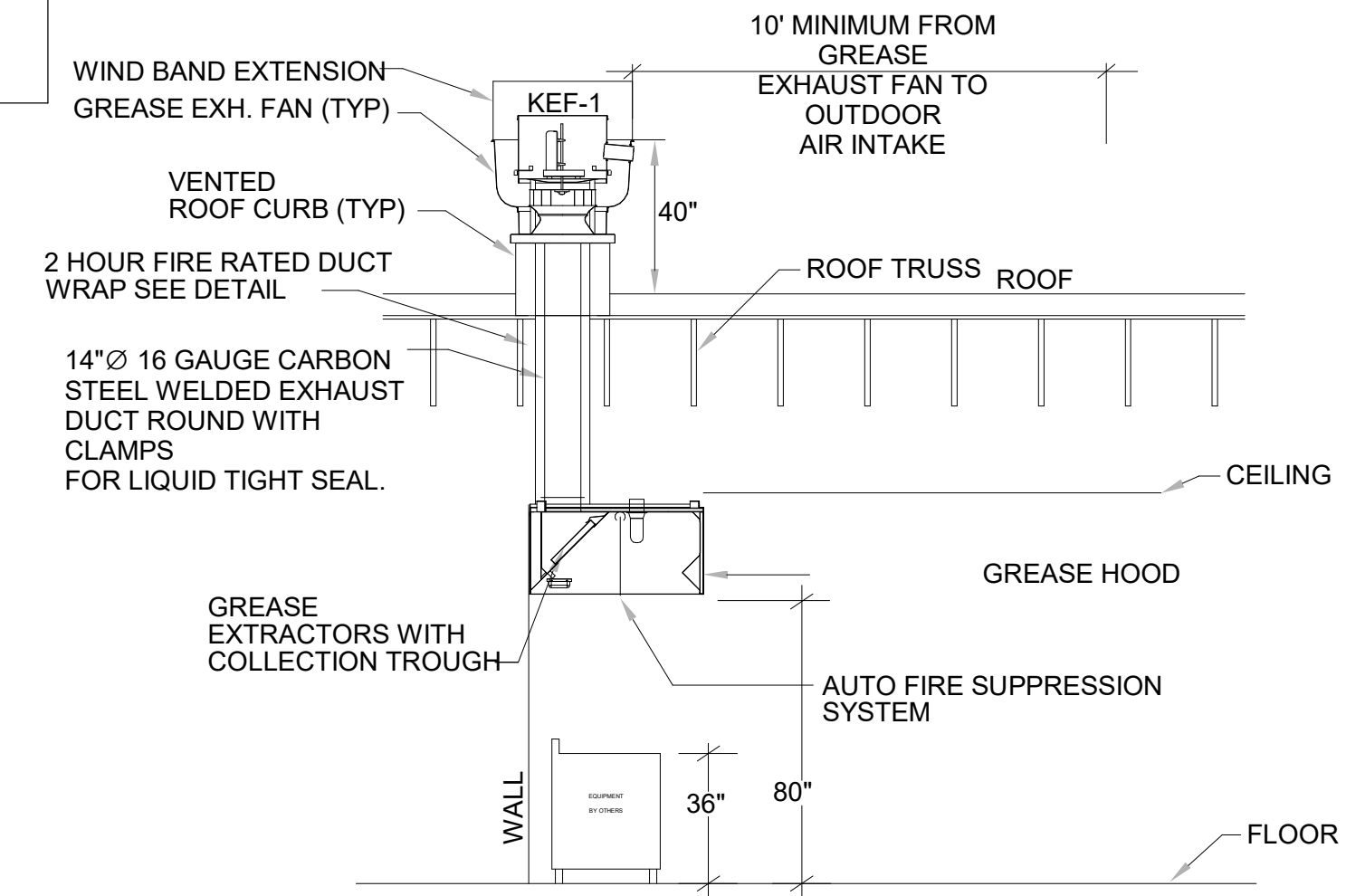
6 DIFFUSER DETAIL
NO SCALE



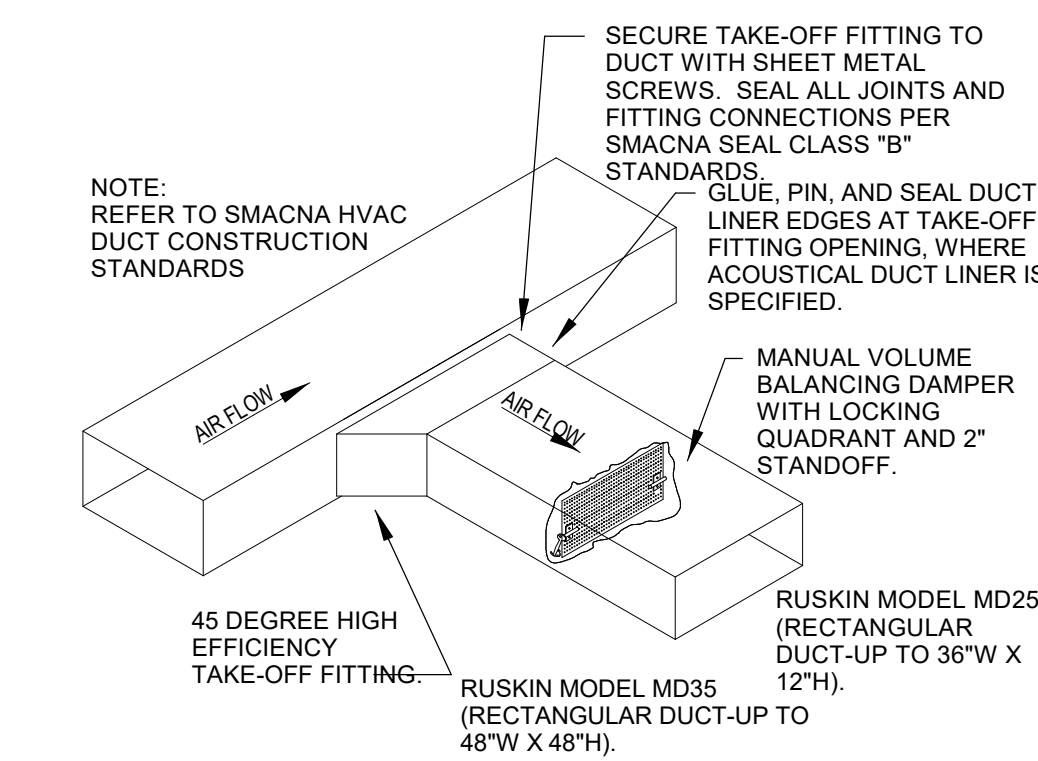
7 DOWNFLOW ROOFTOP UNIT DETAIL
NO SCALE



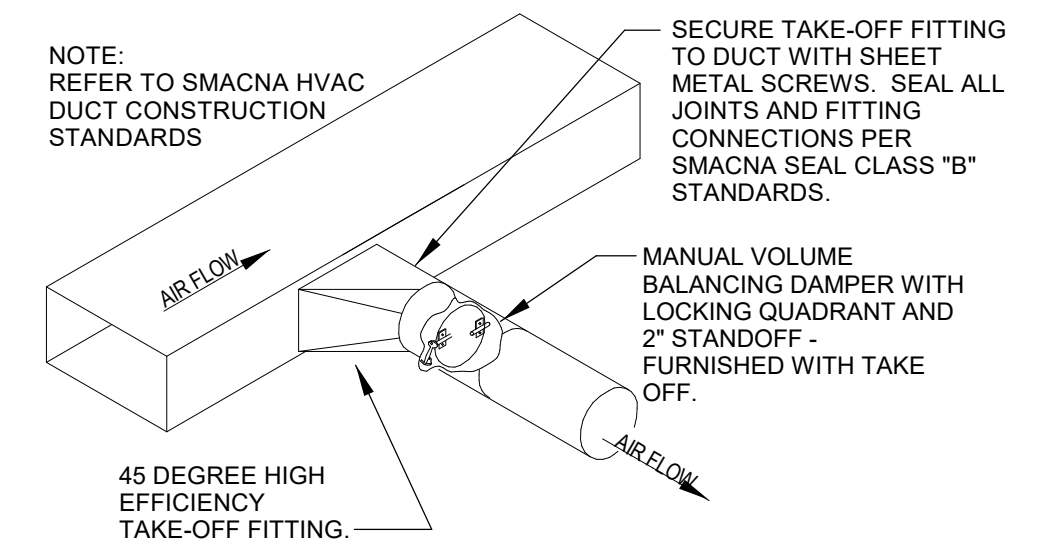
5 ROOFTOP CONDENSING UNIT DETAIL
NO SCALE



4 GREASE HOOD DETAIL
NO SCALE



9 RECTANGULAR DUCT TAKE OFF DETAIL
NO SCALE



8 ROUND DUCT TAKE OFF DETAIL
NO SCALE

BC PROJECT # 24630
ARKANSAS FE CDA #806

This drawing has been prepared by the Engineer, or under his supervision. This drawing is provided as an instrument of service by the Designer/Engineer and is intended for use on this project only. Pursuant to the Architectural Works Copyright Protection Act of 1990, all drawings, specifications, notes and designs, including the overall form, arrangement and composition of letters and elements appearing hereon, constitute the original, copyrighted work of the Designer/Engineer. Any reproduction, use, or disclosure of information contained herein without prior written consent of the Engineer is strictly prohibited. © 2024 BC Engineers, Inc.

BC ENGINEERS INCORPORATED
5720 Reeder Shawnee, KS 66203 (913)282-1772

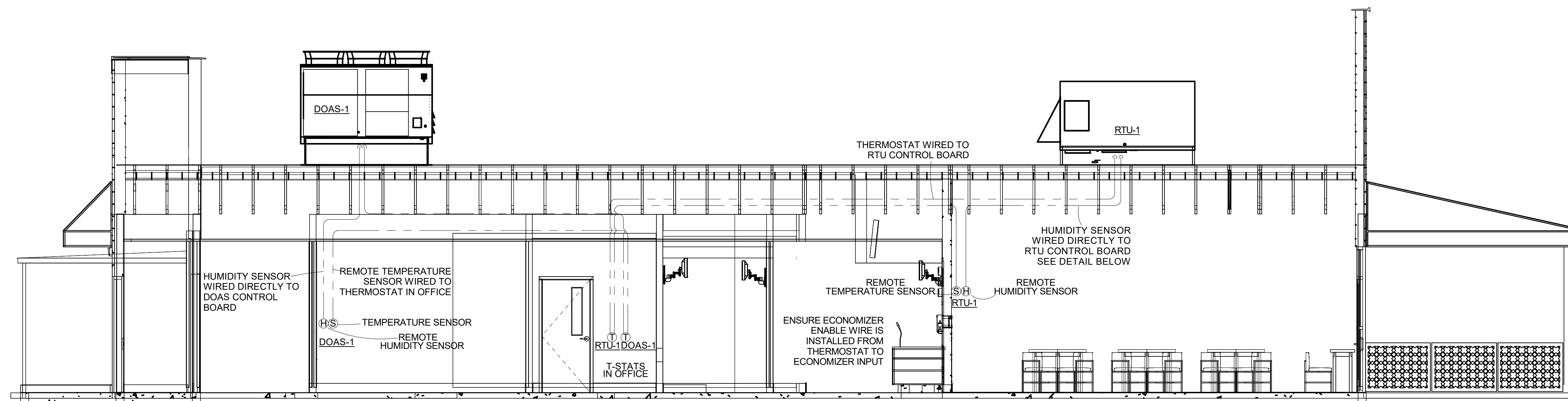
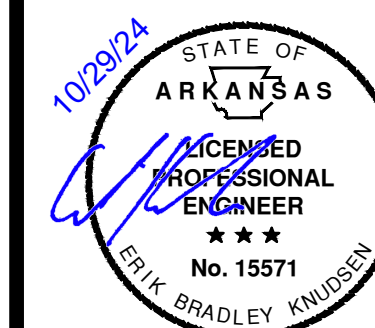
a new restaurant for:
Freddy's

3308 SW 14TH ST Bentonville, AR 71712

date
10/23/2024
drawn by
AK/FO
checked by
DS/EK
revisions

sheet number
M-200

drawing type
Permit
project number
23006.26



REMOTE TEMPERATURE AND HUMIDITY SENSOR WIRING
ALL LOW VOLTAGE WIRING FOR THE HVAC SYSTEM IS TO BE PROVIDED AND INSTALLED BY THE HVAC CONTRACTOR.

Installation

DC Conductors

Table 11. Zone sensor module wiring

| Distance from Unit to Control | Recommended Wire Size |
|-------------------------------|-----------------------|
| 0 - 150 feet | 22 gauge |
| 0 - 45.7 m | 0.33 mm ² |
| 151 - 240 feet | 20 gauge |
| 46 - 73.1 m | 0.50 mm ² |
| 241 - 385 feet | 18 gauge |
| 73.5 - 117.3 m | 0.75 mm ² |
| 386 - 610 feet | 16 gauge |
| 117.7 - 185.9 m | 1.3 mm ² |
| 611 - 970 feet | 14 gauge |
| 186.2 - 295.7 m | 2.0 mm ² |

Figure 58. Typical field wiring diagrams for electromechanical

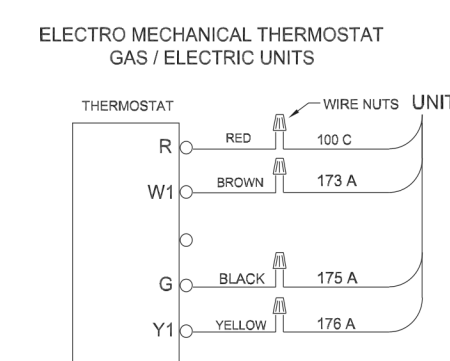
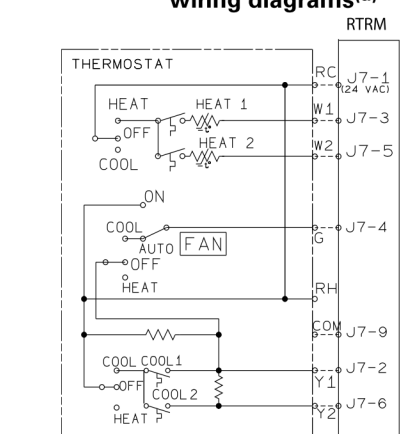


Figure 59. ReliaTel™ conventional thermostat wiring diagrams^(a)



(a) Not compatible with VAV units.

Figure 60. ReliaTel™ options module (RTOM board)

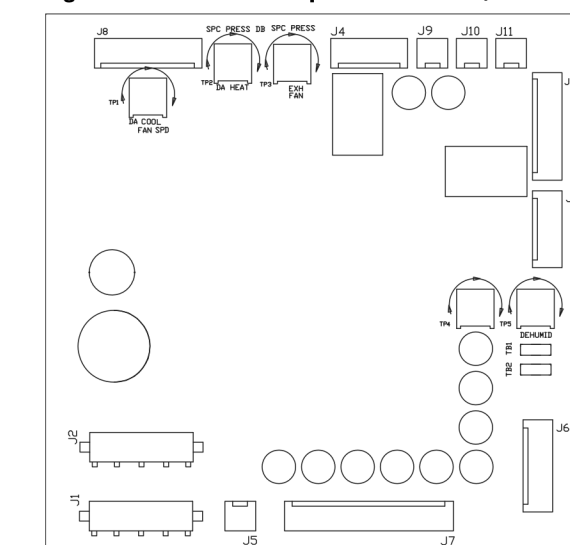


Figure 61. ReliaTel™ relative humidity sensor (dehumidification option)

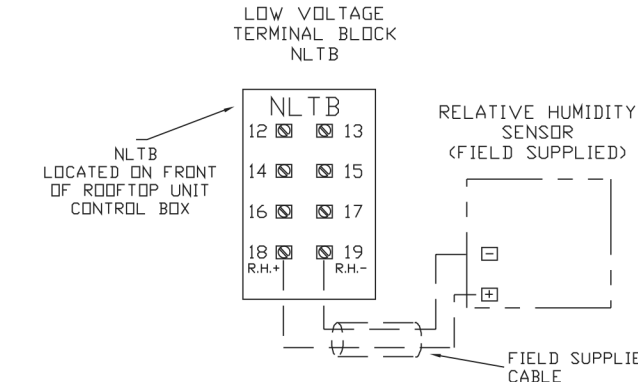
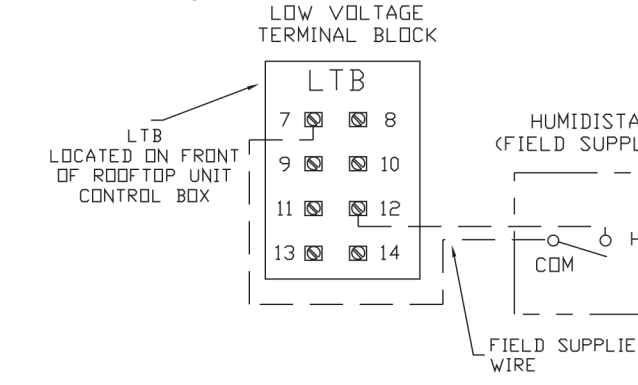


Figure 62. ReliaTel™ humidistat (dehumidification option)



40

TRANE HUMIDITY SENSOR WIRING

FOR GENERAL INFORMATION ONLY.
REFER TO MANUFACTURER'S INSTALLATION INSTRUCTIONS
PROVIDED WITH THE EQUIPMENT FOR EXACT INSTALLATION INSTRUCTIONS AND
REQUIREMENTS.

RT-SVX21YEN

BC PROJECT # 24630
ARKANSAS FE CDA #806

This drawing has been prepared by the Engineer, or under his supervision. This drawing is provided as an instrument of service by the Designer/Engineer and is intended for use on this project only. Pursuant to the Architectural Works Copyright Protection Act of 1990, all drawings, specifications, data and designs, including the overall form, arrangement and composition of spaces and elements appearing herein, constitute the original, copyrighted work of the Designer/Engineer. Any reproduction, use, or disclosure of information contained herein without prior written consent of the Engineer is strictly prohibited. © 2024 BC Engineers, Inc.

BC ENGINEERS INCORPORATED

5720 Reeder Shawnee, KS 66203 (913)282-1772

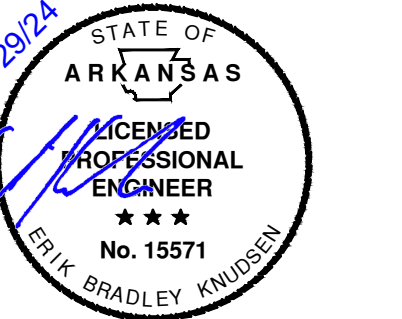
a new restaurant for:
Freddy's
3308 SW 14TH ST Bentonville, AR 71712

date
10/23/2024
drawn by
AK/FO
checked by
DS/EK
revisions

sheet number

M-201

drawing type
Permit
project number
23006.26



FIRE SYSTEM INFORMATION - JOB#7034766

| FIRE SYSTEM NO. | TAG | TYPE | SIZE | MAX FP | DESIGN FP | INSTALLATION | LOCATION ON HOOD |
|-----------------|------------|---------|----------|--------|-----------|-------------------|------------------|
| 1 | FS - 33A/B | TANK FS | 42/42/42 | 60 | 42 | FIRE CABINET LEFT | LEFT, HOOD 1 |

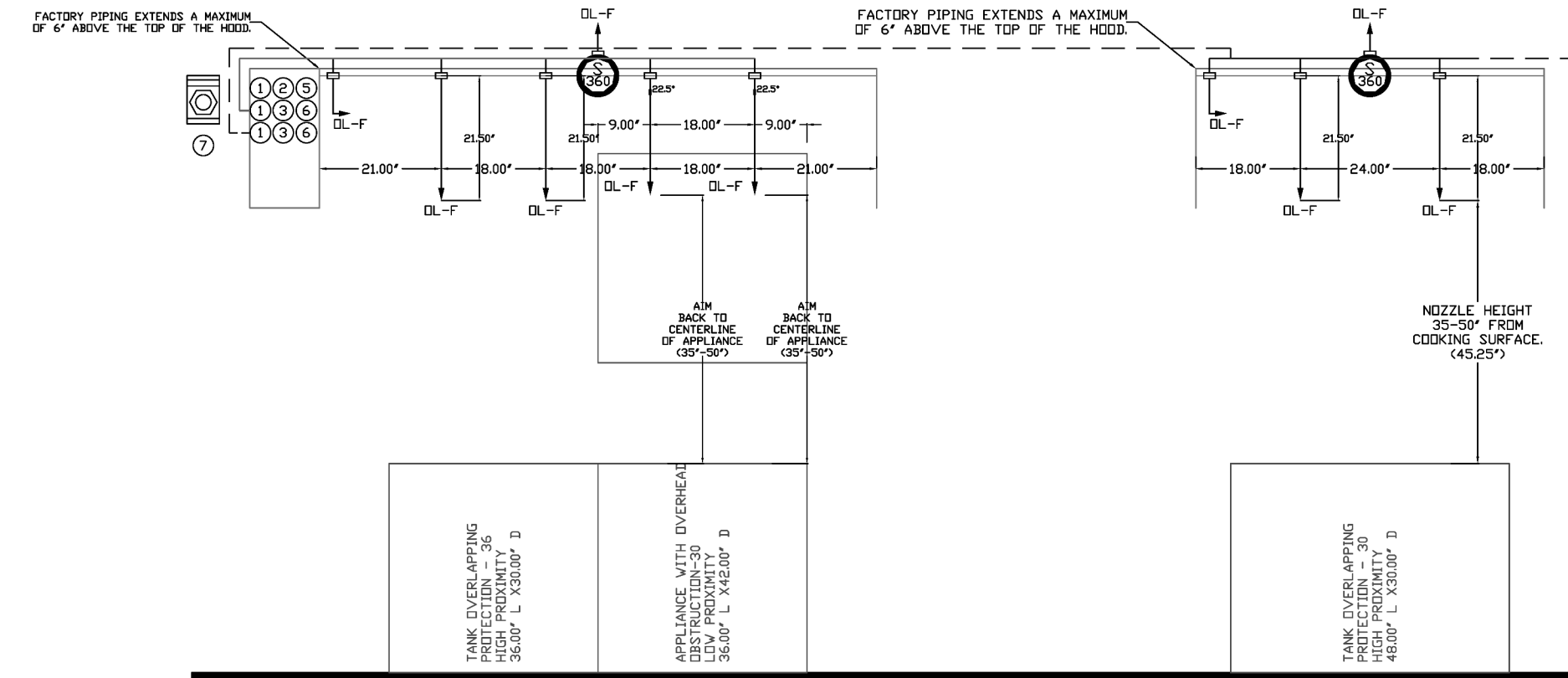
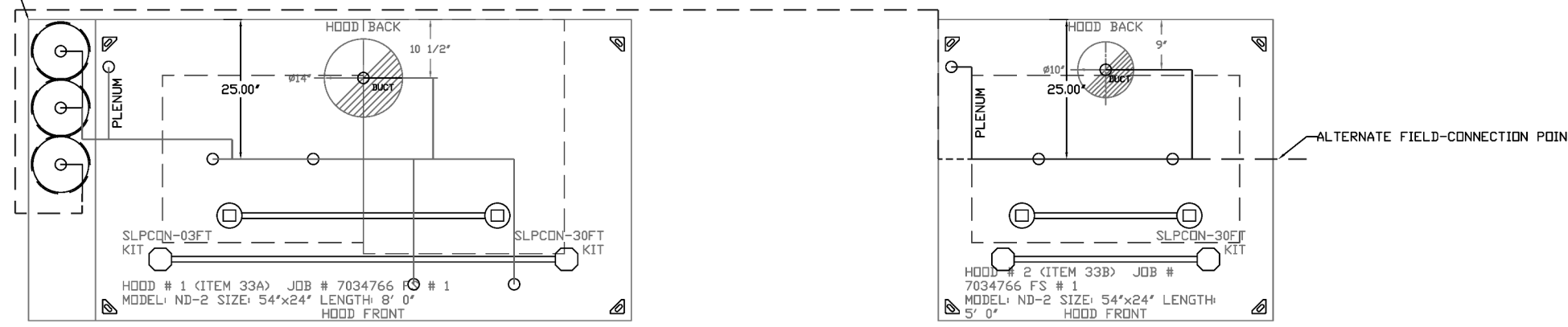
GAS VALVES(S)

| FIRE SYSTEM NO. | TAG | TYPE | SIZE | SUPPLIED BY |
|-----------------|------------|---------------|-------|---------------------|
| 1 | FS - 33A/B | SC ELECTRICAL | 1.000 | CAPTIVEAIRE SYSTEMS |

FIRE SYSTEM PARTS LIST KEY

| FIRE SYSTEM NO. | TAG | KEY NUMBER - PART DESCRIPTION | QTY BY FACTORY | QTY BY SITE |
|-----------------|------------|---|----------------|-------------|
| 1 | FS - 33A/B | D - 0 - TANK FIRE SUPPRESSION POST-DISCHARGE PROCEDURE UTILITY CABINET LABEL SHEET. | 1 | 0 |
| | | D - 0 - TANK FIRE SUPPRESSION MAINTENANCE GUIDE UTILITY CABINET LABEL SHEET. | 1 | 0 |
| | | D - 0 - 47-270021-3244-01-360 BUILT FIRE THERMOSTAT WITH 12 FOOT WIRE LEADS- NO. CLDISE ON TEMP RISE AT 360°F. (A0034303) | 2 | 0 |
| | | D - 0 - 3P-5000E ODR SEAL - 1/2" O.D.L. | 2 | 0 |
| | | D - 0 - 36091 3/8" BRASS FLUG | 3 | 0 |
| | | D - 0 - 4429K153 1/2" MALE NPT TO 1/2" FEMALE NPT ELBOW, BRASS. | 3 | 0 |
| | | D - 0 - 4429K452 1/2" X 1/4" BRASS REDUCING BUSHING. | 2 | 0 |
| | | D - 0 - 79455 3/8" NPT FEMALE TO 1/2" MALE PRESSURE ADAPTER. | 3 | 0 |
| | | D - 0 - 79525 1/2" 90 PRO-PRESS ELBOW WITH 1/2" NPT FEMALE CONNECTION, VIEGA. | 2 | 0 |
| | | D - 0 - 79580 1/2" X 1/2" PRO-PRESS TEE X 1/2" NPT FEMALE CONNECTION, VIEGA. | 2 | 0 |
| | | D - 0 - 87-120045-001 SECONDARY ACTUATOR VALVE (SVA) - SINGLE ACTUATOR, REQUIRES PRIMARY RELEASE ACTUATOR, TANK FIRE SUPPRESSION. | 2 | 0 |
| | | D - 0 - 87-120045-001 SECONDARY ACTUATOR HOSE, 7.5' BRANDED STAINLESS STEEL, TANK FIRE SUPPRESSION. | 2 | 0 |
| | | D - 0 - 87-30000-001 TANK - PRESSURIZED TANK USED FOR TANK FIRE SUPPRESSION. | 3 | 0 |
| | | D - 0 - 87-30000-001 PRIMARY ACTUATOR KIT (PKM) - ACTUATOR AND RELEASE SOLENOID ASSEMBLY, ONE NEEDED PER FIRE SYSTEM, SUPERVISED, TANK FIRE SUPPRESSION. | 1 | 0 |
| | | D - 0 - 87-30000-001 PRIMARY ACTUATOR KIT (PKM) - ACTUATOR AND RELEASE SOLENOID ASSEMBLY, ONE NEEDED PER FIRE SYSTEM, SUPERVISED, TANK FIRE SUPPRESSION. | 1 | 0 |
| | | D - 0 - 87-300152-001 HARDWARE, SVA BOLTS, TANK FIRE SUPPRESSION. | 12 | 0 |
| | | D - 0 - 905450PC PRO PRESS 1/2 PRESS X PRESS 90 ELBOW L.B. | 3 | 0 |
| | | D - 0 - 905720PC PRO PRESS 1/2 PRESS TEE L.B. | 9 | 0 |
| | | D - 0 - 90694415 HARDWARE, DATANKLOCK LOCKING BRACKET SQUARE NUTS 5/16" ZINC, TANK FIRE SUPPRESSION. | 6 | 0 |
| | | D - 0 - A003432 JUNCTION BOX FOR MANUAL PULL STATION, 1.5" DEEP BACK BOX, RED COLOR. | 1 | 0 |
| | | D - 0 - A03484 1/4" NPT SCORABER VALVE AND CAP, JB INDUSTRIES, 1/4" FLARE X 1/4" NPT HALF UNION USED ON TANK SERVICE PORT. | 2 | 0 |
| | | D - 0 - B145 3/8" BLACK IRON 90 ELL. | 4 | 0 |
| | | D - 0 - C81-255 CHROME PLATED PIPE FITTING 3/8" NPT 255 DEGREE ELBOW. | 2 | 0 |
| | | D - 0 - DATANKLOCK TECHADISE ADAPTER TANK LOCKING PLATE FOR FIRE SYSTEM TANK INSTALLATION IN UTILITY CABINETS, TANK FIRE SUPPRESSION. | 3 | 0 |
| | | D - 0 - SLPICON-SOFT SUPERVISED LOOP CONNECTION KIT - CONTAINS THE PARTS NEEDED TO CONNECT THE SUPERVISED LOOP BETWEEN HOODS WITH UP TO 500 HOODS WITH LESS THAN A 1" GAP KIT CONTAINS 3 FEET OF BLACK MG WIRE, 3 FEET OF TAN MG WIRE, 3 FEET OF FLEXIBLE CONDUIT, AND TWO 7/8" CONNECTORS. | 1 | 0 |
| | | D - 0 - SLPICON-SOFT SUPERVISED LOOP CONNECTION KIT - CONTAINS THE PARTS NEEDED TO CONNECT THE SUPERVISED LOOP BETWEEN HOODS WITH UP TO 500 HOODS WITH LESS THAN A 1" GAP KIT CONTAINS 3 FEET OF BLACK MG WIRE, 30 FEET OF TAN MG WIRE, 30 FEET OF FLEXIBLE CONDUIT, AND TWO 7/8" CONNECTORS. | 2 | 0 |
| | | D - 0 - TANK STRAP TANK STRAP - USED FOR TANK FIRE SUPPRESSION. | 9 | 0 |
| | | D - 0 - TFS-UCTANKBRACKET TANK BRACKET FOR FIRE SYSTEM TANK INSTALLATION IN UTILITY CABINETS, TANK FIRE SUPPRESSION. | 3 | 0 |
| | | D - 0 - VK-28392E-000 DISCHARGE ADAPTER, TANK FIRE SUPPRESSION. | 3 | 0 |
| | | D - 0 - 79019 1/2" X 3/8" NPT MALE ADAPTER, VIEGA. | 10 | 0 |
| | | D - 0 - 16 - DL-F NOZZLE - TANK PROTECTION APPLIANCE COVERAGE NOZZLE (INCLUDES METAL BLOW OFF CAP, LANYARD, USED WITH CHROME-PLATED PIPE). | 10 | 0 |
| | | D - 0 - 26 - 65A-3/8 ODR SEAL - 3/8" O.D.S. | 10 | 0 |
| | | D - 0 - 24 - A0034301 MANUAL ACTUATOR DEVICE (MUSH/PULL STATION) WITH PROTECTIVE COVER, ONE (1) NORMALLY OPEN CONTACT, RED COLOR. | 1 | 0 |

* SYSTEM REQUIRES A MINIMUM OF 7 FT OF EXHAUST PIPE LENGTH BETWEEN TANK AND NEAREST APPLIANCE NOZZLE FOR MOST APPLIANCES. CHECK THE EXHAUST DRAWING FOR EQUIVALENT LENGTHS. SEE MANUAL FOR DETAILS.



NOTES

- FIELD PIPE DROPS AS SHOWN.
- PIPING, ELBOWS, TEES, AND NOZZLES SUPPLIED BY GAS.
- FIELD INSTALLED DROP FACTORY WILL PROVIDE QTY 2 60IN LONG PIECES OF CHROME PLATED PIPING SHIPPED LOOSE TO BE FIELD-INSTALLED.
- SHIP LOOSE DROP FACTORY WILL PROVIDE THE EXACT CHROME PIPE LENGTH NEEDED SHIPPED LOOSE TO BE FIELD-INSTALLED.
- DELICATE NOZZLES IF FLOW PATTERN IS BLOCKED BY SHELVEING, SALAMANDERS, ETC.
- OVERLAPPING COVERAGE SHALL NOT BE USED IN ANY APPLIANCE WITH AN OBSTRUCTION.
- IF APPLICABLE, EXTENDED PRE-PIPED DROPS ARE SHIPPED LOOSE.
- FACTORY PIPING EXTENDS A MAXIMUM OF 6" ABOVE THE TOP OF THE HOOD.
- APPLIANCE DIMENSIONS LISTED REPRESENT THE COOKING SURFACE SIZE, NOT THE OVERALL APPLIANCE SIZE.
- THIS FIRE SYSTEM COMPLIES WITH UL 300 REQUIREMENTS.
- DL-F NOZZLE PART NUMBER REPLACES 3070-3/BH-10-SS.

JOB # 7034766
JOB NAME: FREDDY'S - BENTONVILLE, AR.

SYSTEM SIZE: TANK-0P-3 DESIGN FP: 42, MAXIMUM FP: 60.
HOOD # 1: 8' 0" 0" 0" LONG X 54" WIDE X 24" HIGH.
HOOD # 2: 5' 0" 0" 0" LONG X 54" WIDE X 24" HIGH.
RISER # 1: 3/8" 1" DIA.
HOOD # 2: 2" METAL BLOW-OFF CAPS INCLUDED.

- HEAVY-DUTY APPLIANCES (RATED 600°F) WILL REQUIRE AN ADDITIONAL DOWNSTREAM FIRE-STAT IN THE EVENT THAT THE DUCTWORK CONTAINS ANY HORIZONTAL RUNS OVER 25 FT IN LENGTH.
- MEDIUM TO LIGHT-DUTY APPLIANCES (RATED 450°F) WILL NOT REQUIRE ANY ADDITIONAL DOWNSTREAM DETECTION.

HOOD DISTRIBUTION PIPING LIMITATIONS

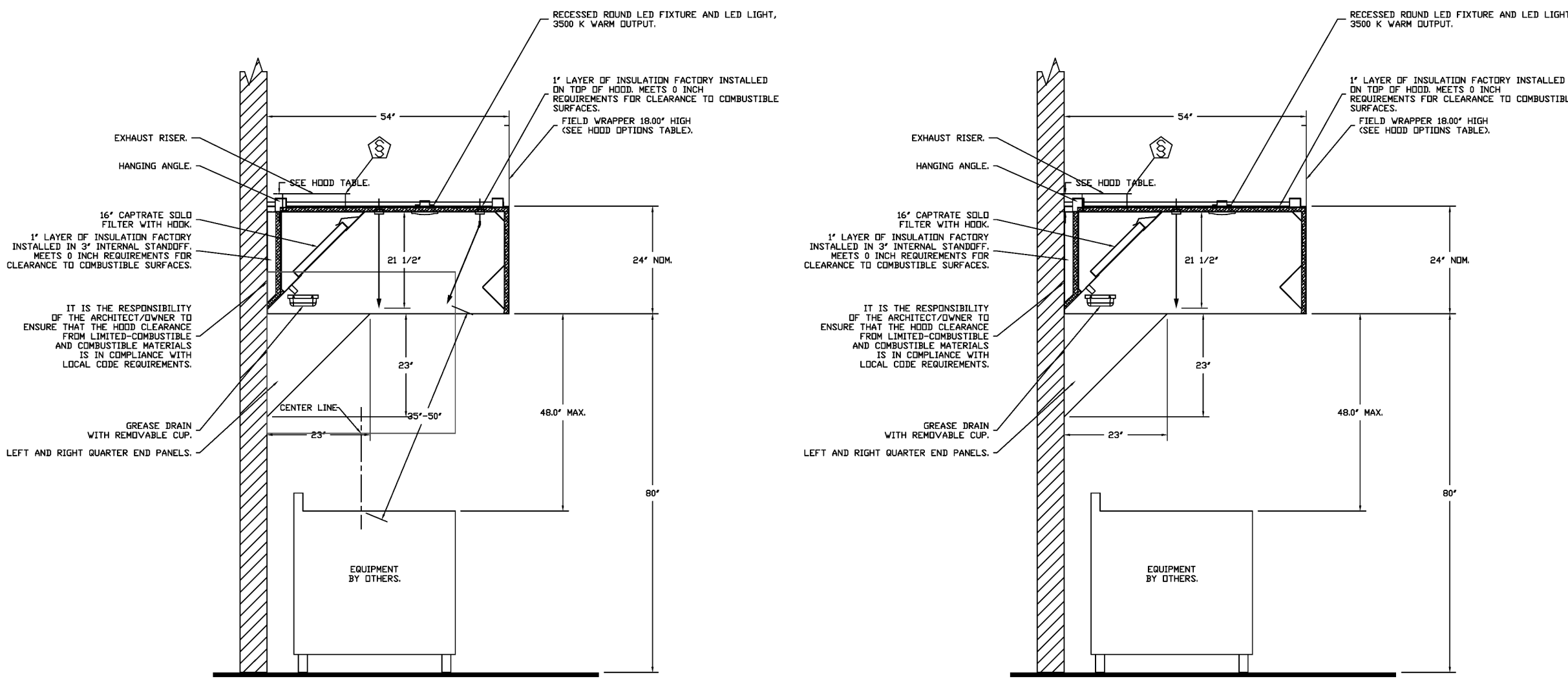
| PIPE SECTION | MAX PIPE LENGTH (FT) |
|---|----------------------|
| MAX SUPPLY LINE TO FIRST OVERLAPPING NOZZLE | 42 |
| OVERLAPPING NOZZLE APPLIANCE BRANCH | 10 |
| DEDICATED NOZZLE APPLIANCE BRANCH | 10 |

LEGEND - FIRE CABINET TANK SYSTEM

- 1 4 GALLON TANK.
- 2 PRIMARY ACTUATOR RELEASE.
- 3 SECONDARY ACTUATOR RELEASE.
- 4 PRESSURE SUPERVISION SWITCH.
- 5 PRIMARY HOSE ASSEMBLY.
- 6 SECONDARY HOSE ASSEMBLY.
- 7 REMOTE MANUAL ACTUATION DEVICE.

INCLUDED: FIELD INSTALLATION AND HOOKUP DURING NORMAL BUSINESS HOURS BY CERTIFIED INSTALLERS ONLY IN THE LOCATION NOTES ABOVE. TWO SITE VISITS ONLY ONE VISIT TO SET PULL STATION & SYSTEM HOOKUP AND ONE VISIT FOR ONE TEST. ADDITIONAL VISITS WILL INCURE IN ADDITIONAL CHARGES. ONE MECHANICAL OR ELECTRICAL GAS VALVE PER SYSTEM AT A MINIMUM SIZE OF 1/2" P.S.I. AND SYSTEM TEST.

EXCLUDED: UNDER LAMPS & PREVALVING VAGE CLAMPS & VAGES WILL BE ADDED IF APPLICABLE. GAS VALVE INSTALLATION, ELECTRICAL, HOOKUP AND CONNECTIONS, HANGING OF FIRE CABINET, SHUNT TRIP, HANDHELD EXTINGUISHERS, IN-SITE RE-PIPING DUE TO EQUIPMENT LAYOUT CHANGES.



SECTION VIEW - MODEL 6424ND-2 HOOD - #1

SECTION VIEW - MODEL 6424ND-2 HOOD - #2

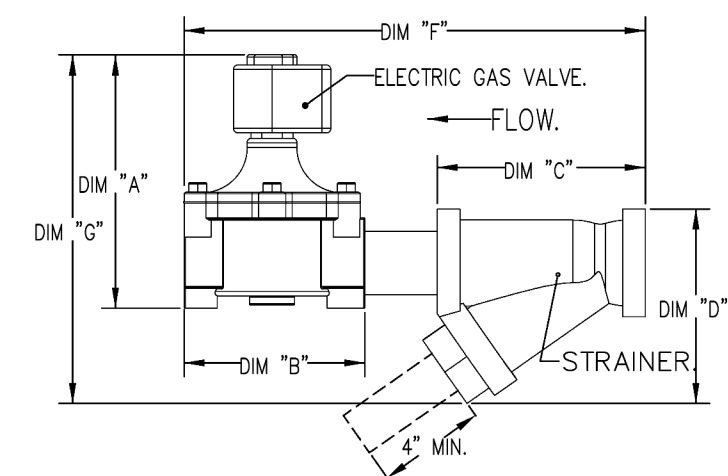
GAS VALVES AND STRAINERS

| TYPE | SIZE | VOLTAGE | GAS VALVE SIZING | FLOW AT 1 IN.W.C. DROP NATURAL GAS | FLOW AT 1 IN.W.C. DROP PROPANE | FLOW AT 1 IN.W.C. DROP ETHANE | INSTALLATION | GAS VALVE PART NUMBER | STRAINER PART NUMBER | GAS VALVE/STRAINER KIT |
|------------|------|---------|--|------------------------------------|--------------------------------|-------------------------------|--------------------------|-----------------------|----------------------|---------------------------|
| ELECTRICAL | 1" | 120 VAC | MIN. RELIEF PRESSURE: 8 PSI (0.4 W.C.) MAX. HEAT PRESSURE: 153,300 BTU/HR | 1.135,300 BTU/HR | 1,135,300 BTU/HR | 1,135,300 BTU/HR | ORIENTATIONS: HORIZONTAL | 8214250 | 4417655 | 8214250/4417655 (SCE050K) |

DIAGRAM GAS VALVE ONLY:
1/2" O.D. GAS VALVES CAN BE MOUNTED WITH THE SOLID END IN ANY POSITION HORIZONTALLY.
1/2" O.D. GAS VALVES MUST BE MOUNTED WITH THE SOLID END VERTICAL AND UPRIGHT.
SMALLER GAS VALVES MUST BE MOUNTED WITH THE SOLID END VERTICAL AND UPRIGHT.

ALL GAS VALVES/STRAINERS:
PROPER CLEARANCE MUST BE PROVIDED IN ORDER TO SERVICE THE STRAINERS. A MINIMUM OF 4" CLEARANCE DISTANCE MUST BE PROVIDED AT THE BASE OF THE STRAINER. CUSTOMERS MUST VERIFY ALL DIMENSIONS AS WELL AS PRESSURE RATINGS AND SPECIFIC GRAVITY OF MATERIAL. GAS = 0.84, SPECIFIC GRAVITY OF L.P. = 1.52.

CALCULATIONS:
TO CALCULATE GAS FLOW FOR OTHER THAN 1 IN.W.C. PRESSURE DROP:
NEW BTU/HR = (BTU/HR AT 1 IN.W.C. PRESSURE DROP) X NEW PRESSURE DROP
TO CALCULATE GAS FLOW FOR OTHER THAN 0.84 SPECIFIC GRAVITY:
NEW BTU/HR = (BTU/HR AT 0.84) X (0.84 / NEW SPECIFIC GRAVITY)



REVISIONS

| NO. | DESCRIPTION | DATE |
|-----|-------------|------|
| 1 | | |
| 2 | | |
| 3 | | |
| 4 | | |

CAPTIVEAIRE

HBT Foodservice

104 W. 9th St. Suite 204, Kansas City, MO, 64105 PHONE: (816) 221-8575 FAX: (816) 221-8311 EMAIL: reg98@captiveaire.com

Freddy's - Bentonville, AR
BENTONVILLE, AR, 72712

DATE: 9/10/2024
DWG.#: 7034766
DRAWN BY: michael.co
SCALE: 1/2" = 1'-0"
MASTER DRAWING

SHEET NO. 2

BC PROJECT # 24630
ARKANSAS FE CDA 4806

This drawing has been prepared by the Engineer or under his supervision. This drawing is provided as an instrument of service by the Design Engineer and is intended for use on the project only. Pursuant to the Architectural Works Copyright Protection Act of 1990, all drawings, specifications, data and designs, including the overall form, arrangement and composition of letters and elements appearing herein, constitute the original, copyrighted work of the Design Engineer. Any reproduction, use, or disclosure of information contained herein without prior written consent of the Engineer is strictly prohibited. © 2024 BC Engineers, Inc.

BC ENGINEERS INCORPORATED

5720 Reeder Shawnee, KS 66203 (913)282-1772

a new restaurant for:
Freddy's
3308 SW 14TH ST Bentonville, AR 71712

date
10/23/2024
drawn by
AK/FO
checked by
DS/EK
revisions

sheet number
M-301
drawing type
Permit
project number
23006.26



EXHAUST FAN INFORMATION - JOB#7034766

| FAN UNIT NO | TAG | QTY | FAN UNIT MODEL # | MANUFACTURER | CFM | ESP | RPM | MOTOR ENCL. | HP | BHP | PHASE | VOLT | FLA | DISCHARGE VELOCITY | WEIGHT LBS | SDNES |
|-------------|-----------|-----|------------------|--------------|------|------|------|-------------|-------|--------|-------|------|-----|--------------------|------------|-------|
| 1 | ITEM 74.1 | 1 | CASRCIB8D | CAPTIVEARE | 1600 | 1400 | 1105 | DDP-PREMIUM | 1.000 | 0.6270 | 3 | 200 | 3.8 | 928 FPM | 296 | 15.7 |
| 2 | ITEM 74.2 | 1 | DUS0FA | CAPTIVEARE | 775 | 1250 | 1532 | TEAD-ECH | 0.500 | 0.3950 | 1 | 115 | 6.3 | 295 FPM | 103 | 16.4 |

DDAS/RTU FAN SCHEDULE - JOB#7034766

| FAN UNIT NO | TAG | QTY | DDAS/RTU MODEL # | MANUFACTURER | BLUVER AIR CPM | RETURN AIR CPM | MAX OUTSIDE AIR CPM | ELECTRICAL INFORMATION | | | | OUTSIDE AIR | | | | COOLING INFORMATION | | | | REHEAT INFORMATION | | | | GAS HEAT INFORMATION | | | | NOTES | | | | | | | | | | | | | |
|-------------|-----------|-----|-----------------------|--------------|----------------|----------------|---------------------|------------------------|-------|-------|------|-------------|-----|-------|-----|---------------------|-------|-------|-------|--------------------|-------|-------|----|----------------------|----|------|-----|-------|-------|------|----|------|----|------|--------|---------|--------|--------|-----|--------------------------|------------------------------------|
| | | | | | | | | HP | PHASE | VOLT | MCA | MCCP | DB | WB | DB | WB | DB | WB | DB | WB | DB | WB | DB | WB | DB | WB | DB | | WB | DB | WB | | | | | | | | | | |
| 3 | ITEM 74.3 | 1 | CAS-HVAC3-1250-15-15T | CAPTIVEARE | 15P-3 | 0 | 2300 | 2300 | 2557 | 0.500 | 2.00 | 3 | 200 | 59.2A | 60A | 84.1F | 74.3F | 84.1F | 50.2F | 48.7F | 47.2F | 109.1 | MM | 80.0 | MM | 18.8 | 5.7 | 70.0F | 56.9F | 49.1 | MM | 29.6 | MM | 26.6 | LBS/HR | NATURAL | 008000 | 006642 | 64F | 7 IN. W.C. - 14 IN. W.C. | 12,3,4,5,6,7,8,9,10,11,12,13,14,15 |

- NOTES:**
- INVERTER SCROLL COMPRESSOR WITH INTEGRATED OIL SENSOR. DIGITAL OR STAGED SCROLL. NOT AN APPROVED EQUAL.
 - DIRECT DRIVE PLUMMER BLUVER. BELT DRIVEN BLUVERS ARE NOT ACCEPTABLE.
 - INTEGRATED MONITORING VIA CELLULAR CONNECTION BY MANUFACTURER.
 - REFRIGERATION PRESSURE MONITORING ON HIGH AND LOW PRESSURE SIDE OF SYSTEM INCLUDED THROUGH DIGITAL INTERFACE.
 - EC MOTOR CONDENSING FANS.
 - ELECTRONIC EXPANSION VALVE. TXV NOT ACCEPTABLE.
 - SUCTION LINE ACCUMULATOR.
 - FACTORY CONSTRUCTION WITH 5 YEAR PARTS WARRANTY, 25 YEAR WARRANTY ON STAINLESS STEEL HEAT EXCHANGER.
 - AVERAGING INTAKE, EVAP AND DISCHARGE TEMPERATURE SENSORS (DISCHARGE SENSOR TO BE FACTORY MOUNTED WITHIN UNIT)
 - 5" EXTERIOR WALL CONSTRUCTION w/ 2" INSULATION MINIMUM 200A EXTERIOR w/ LEAK BASE.
 - BIG EFFICIENT FURNACE, WITH MODULATING INDICATOR TO MAINTAIN CONSTANT COMBUSTION EFFICIENCY ACROSS FIRING RANGE. 6:1 TURNDOWN WITH NG AND 5:1 TURNDOWN WITH LP.
 - SUPPLY CFM MEASUREMENT TO UNIT WITH CFM MEASUREMENT INCLUDED THROUGH DIGITAL INTERFACE.
 - FULLY MODULATING HOT GAS HEATERS.
 - FULLY MODULATING HOT GAS HEATERS.
 - HALL GUARD FOR CONDENSING COIL.
 - DOWN DISCHARGE/DOWN RETURN.

FAN OPTIONS

| FAN UNIT NO | TAG | QTY | DESCRIPTION |
|-------------|--|-----|---|
| 1 | ITEM 74.1 | 1 | UTILITY SET GREASE CUP |
| | | 1 | ROOF - DISCHARGE EXTENSION ASSEMBLY WITH HARDWARE |
| | | 1 | FAN BASE CERAMIC SEAL - CASREIB - INSTALLED AT PLANT - FOR GREASE BUCTS |
| | | 1 | UNIT MOUNTED VFD FOR USE WITH ECM'S |
| | | 1 | VFD MOUNTING BRACKET FOR CASREIB |
| | | 1 | 2 YEAR PARTS WARRANTY |
| | | 1 | GREASE BOX |
| | | 1 | UPRAST FAN WHEEL ACCESS PORT |
| | | 1 | 36" TALL STRAIGHT WIND BAND EXTENSION 13 (SHIPS LOOSE) |
| | | 1 | 3 GUY LINE EYE BOLTS - USED FOR 3 GUY LINE THE (OFF PRINTS) |
| 2 | ITEM 74.2 | 1 | FAN BASE CERAMIC SEAL - DUS0RFA - INSTALLED AT PLANT - FOR GREASE BUCTS |
| | | 1 | EDM WIRING PACKAGE - PWM SIGNAL FROM ECM'S PREWIRE (TELCO MOTOR), CCM ROTATION |
| | | 1 | 2 YEAR PARTS WARRANTY |
| | | 1 | INLET PRESSURE GAUGE, 0-25" |
| | | 1 | MANIFOLD PRESSURE GAUGE, 0 TO 10" WC, 1 FURNACE |
| | | 1 | TOTAL CFM MONITORING |
| | | 1 | INTAKE FIRESTAT SET TO 135°F |
| | | 1 | FIREZESTAT |
| | | 1 | DISCHARGE FIRESTAT SET TO 240°F |
| | | 1 | SHOP LOOSE GAS STRAINER 1" |
| 3 | ITEM 74.3 | 1 | SINGLE POINT ELECTRICAL CONNECTION FOR RTU, 750VA TRANSFORMER USED, IF A NON-DCV PREWIRE CONTROLS THIS UNIT, THE BOB, #47, #48, OR #27 PREWIRE OPTION MUST BE SELECTED. DOES NOT PROVIDE SUPPLY STARTER IN FURNACE. |
| | | 1 | CASLINK BUILDING MONITORING SYSTEM - INTERNET OR CELLULAR CONNECTION REQUIRED |
| | | 1 | RTU DOWN DISCHARGE |
| | | 1 | 2" MERV 13 FILTERS FOR RTU'S QTY. 4) |
| | | 1 | 2" MERV 8 FILTERS FOR RTU'S QTY. 4) |
| | | 1 | OVERHEAT STAT |
| | | 1 | OCCUPIED SCHEDULING |
| | | 1 | RTU CURB BUCT HANGER |
| | | 1 | RTU INTAKE/RETURN DAMPER - MANUAL CONTROL VIA HMI |
| | | 1 | RTU DOWN RETURN |
| 1 | 24VAC FIRE INPUT | | |
| 1 | RTU RETURN MOUNTED SMOKE DETECTOR AND SAMPLING TUBE - FACTORY INSTALLED | | |
| 1 | RTU CONDENSING OUTLET (GFCD, 15 AMP - REQUIRES SEPARATE 150V CONNECTION) | | |
| 1 | INCLUDES RECEPTACLE, COVER AND J-BOX | | |
| 1 | 15 TON MODULATING COOLING OPTION, 200/230V, R410A REFRIGERANT, VARIABLE SPEED COMPRESSOR, ECM CONDENSING FANS | | |
| 1 | 15 TON MODULATING REHEAT OPTION - SPACE BEWPOINT CONTROL - R410A | | |
| 1 | RTU HALL GUARD | | |
| 1 | UNIT MOUNTED VFD CONFIGURED FOR DCV | | |
| 1 | 5 YEAR ENTIRE UNIT PARTS WARRANTY, 10 YEAR ENTIRE UNIT PARTS WARRANTY WITH BEHTE MONITORING AND CAPTIVEARE SERVICE CONTRACT, 25 YEAR STAINLESS STEEL FURNACE PARTS WARRANTY (SEE ADDITIONAL DETAILS) | | |
| 1 | EXTERIOR GAS CONNECTION PROVIDED BY FACTORY WITH QUICK SEAL AND ANTI-ROTATION BRACKET | | |

FAN ACCESSORIES

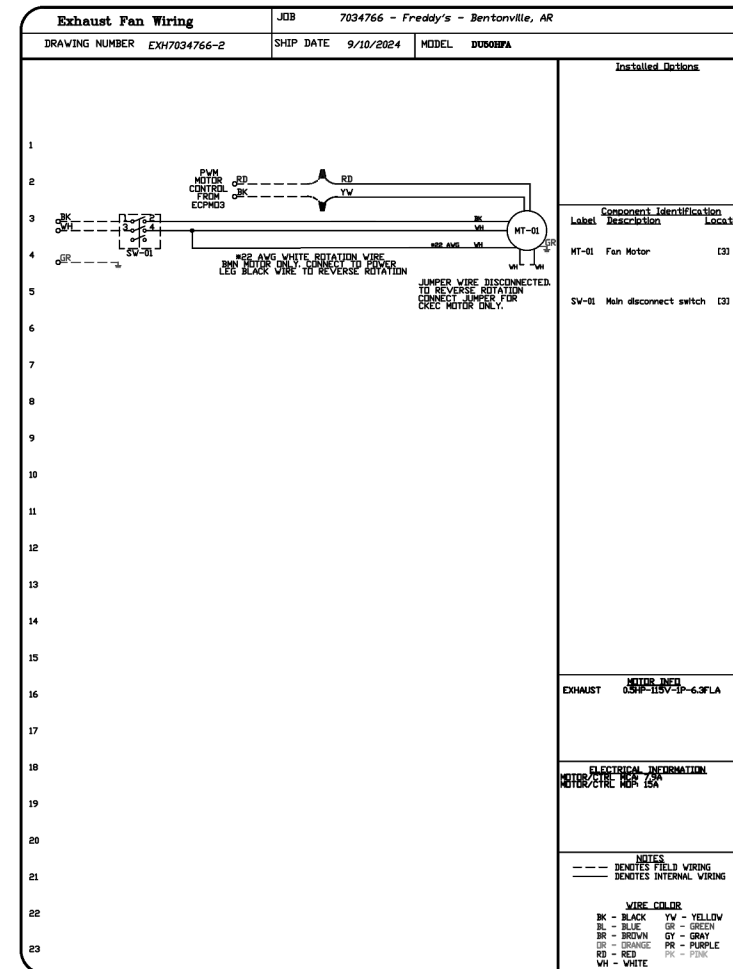
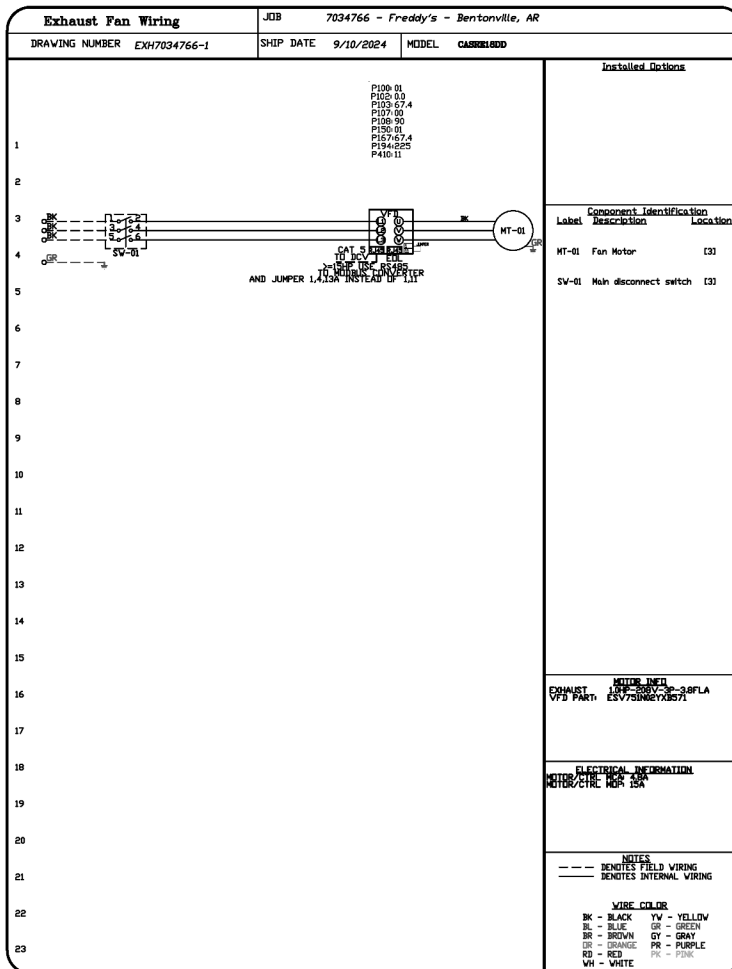
| FAN UNIT NO | TAG | EXHAUST | SUPPLY |
|-------------|-----------|------------|---------------------|
| 1 | ITEM 74.1 | GREASE CUP | GRAVITY WALL DAMPER |
| 2 | ITEM 74.2 | YES | YES |

CURB ASSEMBLIES

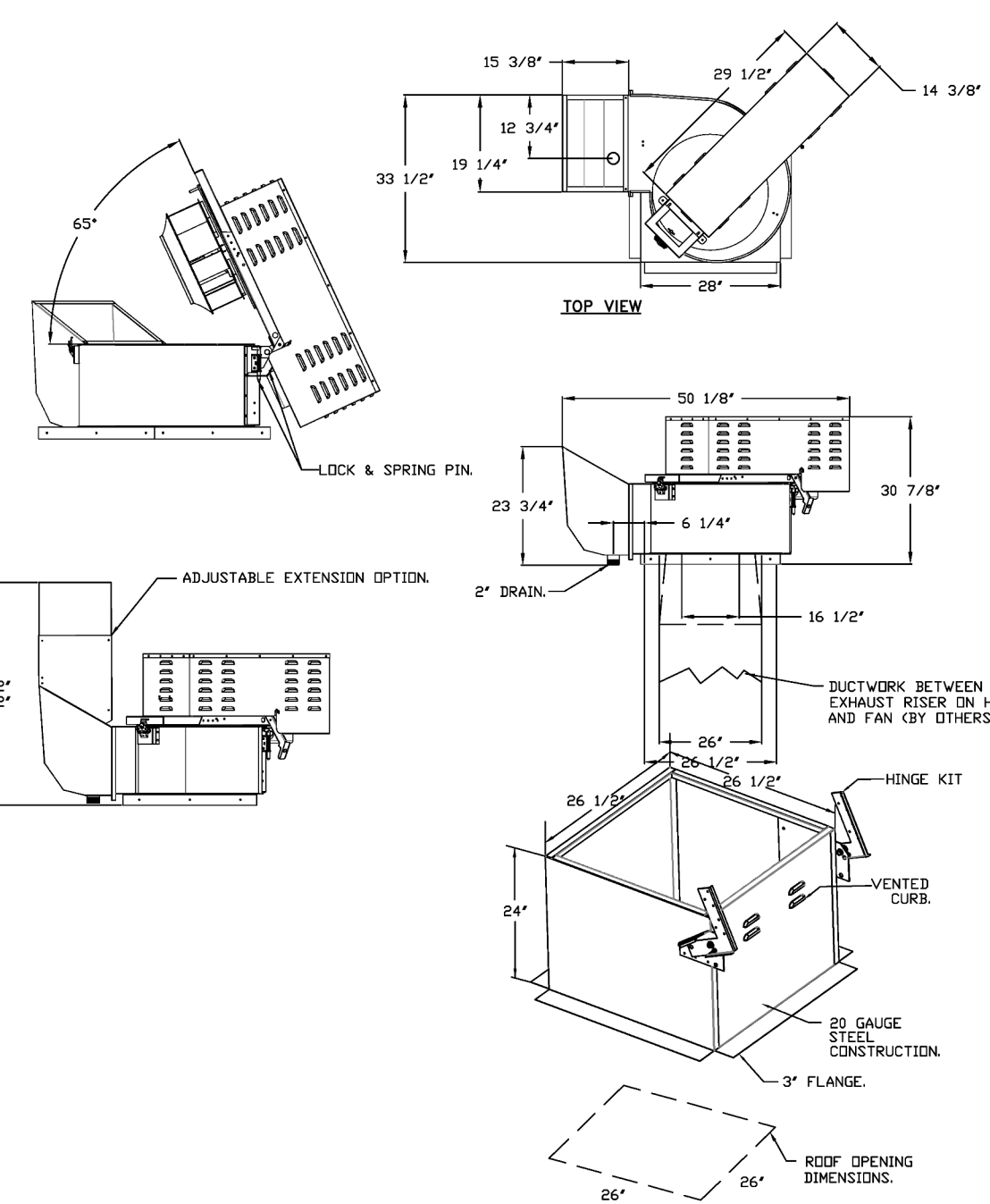
| NO | IN FAN | TAG | WEIGHT | ITEM | SIZE |
|----|--------|-----------|---------|------|---|
| 1 | # 1 | ITEM 74.1 | 52 LBS | CURB | 26.500"V X 26.500" X 24.000" VENTED HINGED. |
| 2 | # 2 | ITEM 74.2 | 31 LBS | CURB | 15.500"V X 15.500" X 20.000" VENTED HINGED. |
| 3 | # 3 | ITEM 74.3 | 104 LBS | CURB | 19.500"V X 19.000" X 14.000" INSULATED. |

HMI SCHEDULE

| UNIT NUMBER | HMI # | HMI LOCATION | TEMP AVERAGING | MODBUS ADDRESS |
|-------------|--------|--------------|----------------|-----------------|
| FAN #3 | HMI #1 | UNIT | IN UNIT | NET AVERAGED 55 |
| FAN #3 | HMI #2 | SPACE | KITCHEN | AVERAGED 56 |
| FAN #3 | HMI #3 | SPACE | OFFICE | NET AVERAGED 57 |

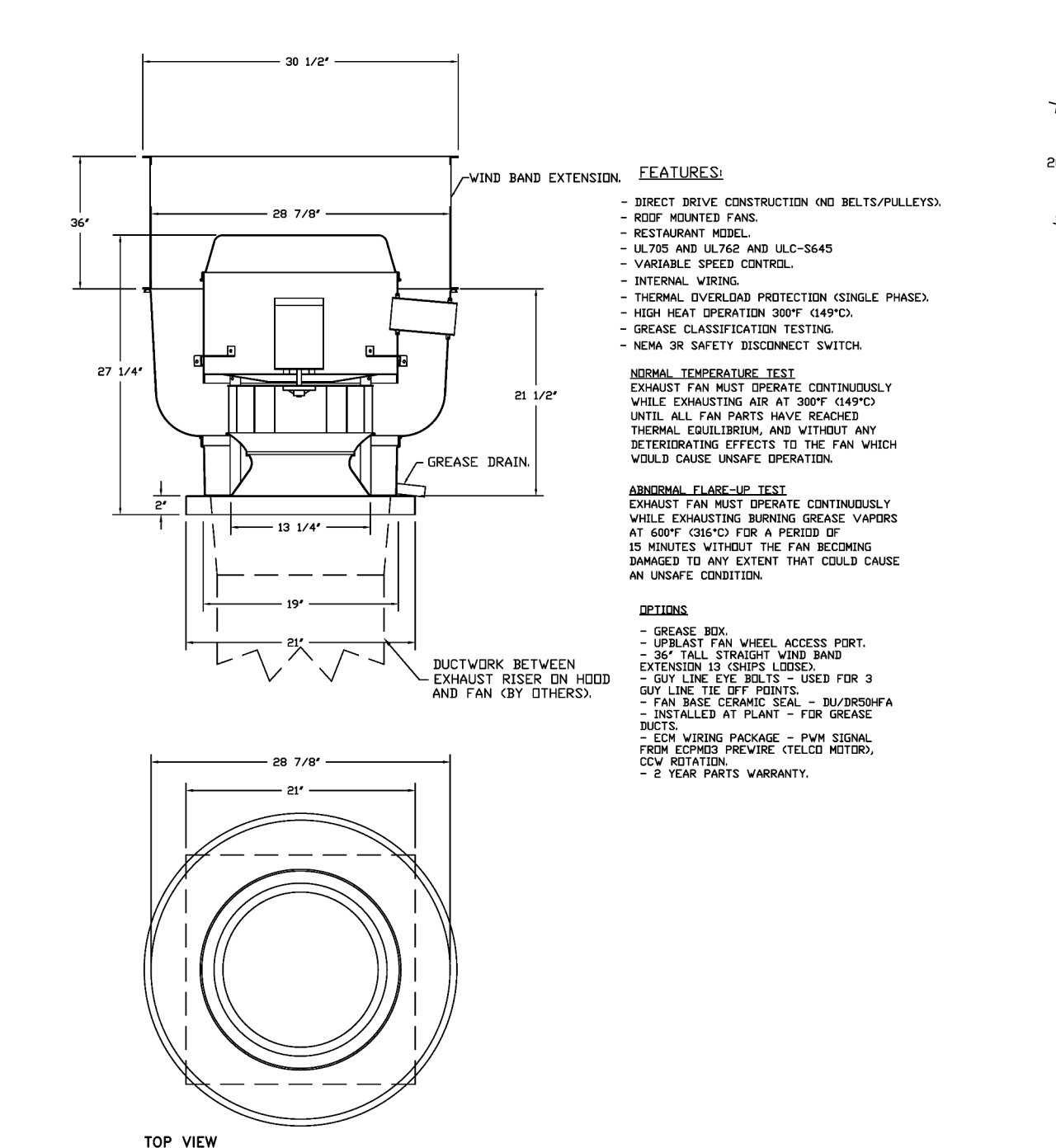


FAN #1 CASRCIB8D - EXHAUST FAN ITEM 74.1



- FEATURES:**
- ROOF MOUNTED FANS.
 - RESTAURANT MODEL.
 - UL-705 AND UL-664S.
 - HIGH HEAT OPERATION DIRECT DRIVE 300F (149C).
 - HEAT SLINGER.
 - GREASE CLASSIFICATION TESTING.
 - TILT OUT WHEEL.
 - LOCKING PIN FOR POWER PACK.
 - MOTOR WEATHER COVER.
 - INTERLOCKED DISCONNECT SWITCH.
 - NON-4X SAFETY DISCONNECT SWITCH.
- NORMAL TEMPERATURE TEST, DIRECT DRIVE EXHAUST FAN MUST OPERATE CONTINUOUSLY WHILE EXHAUSTING AIR AT 300°F (149°C) UNTIL ALL FAN PARTS HAVE REACHED THERMAL EQUILIBRIUM AND WITHOUT ANY DEGRADATING EFFECTS TO THE FAN WHICH WOULD CAUSE INSAFE OPERATION.**
- ABNORMAL FLAME-UP TEST, DIRECT DRIVE EXHAUST FAN MUST OPERATE CONTINUOUSLY WHILE EXHAUSTING BURNING GREASE VAPORS AT 600°F (316°C) FOR A PERIOD OF 15 MINUTES WITHOUT THE FAN BECOMING DAMAGED TO ANY EXTENT THAT COULD CAUSE AN UNSAFE CONDITION.**
- DETAILS:**
- UTILITY SET GREASE CUP.
 - ROOF - DISCHARGE EXTENSION ASSEMBLY WITH HARDWARE.
 - FAN BASE CERAMIC SEAL - CASREIB - INSTALLED AT PLANT - FOR GREASE BUCTS.
 - VFD MOUNTING BRACKET FOR CASREIB.
 - VFD MOUNTED VFD FOR USE WITH ECM'S.
 - 2 YEAR PARTS WARRANTY.

FAN #2 DUS0RFA - EXHAUST FAN ITEM 74.2



- FEATURES:**
- DIRECT DRIVE CONSTRUCTION AND ULTS/PALLETED.
 - ROOF MOUNTED FANS.
 - RESTAURANT MODEL.
 - UL-705 AND UL-664S AND UL-664S.
 - VARIABLE SPEED CONTROL.
 - INTERNAL WIRING.
 - THERMAL OVERLOAD PROTECTION (SINGLE PHASE).
 - HIGH HEAT OPERATION 300F (149C).
 - GREASE CLASSIFICATION TESTING.
 - NON-4X SAFETY DISCONNECT SWITCH.
- NORMAL TEMPERATURE TEST, DIRECT DRIVE EXHAUST FAN MUST OPERATE CONTINUOUSLY WHILE EXHAUSTING AIR AT 300°F (149°C) UNTIL ALL FAN PARTS HAVE REACHED THERMAL EQUILIBRIUM AND WITHOUT ANY DEGRADATING EFFECTS TO THE FAN WHICH WOULD CAUSE INSAFE OPERATION.**
- ABNORMAL FLAME-UP TEST, DIRECT DRIVE EXHAUST FAN MUST OPERATE CONTINUOUSLY WHILE EXHAUSTING BURNING GREASE VAPORS AT 600°F (316°C) FOR A PERIOD OF 15 MINUTES WITHOUT THE FAN BECOMING DAMAGED TO ANY EXTENT THAT COULD CAUSE AN UNSAFE CONDITION.**
- DETAILS:**
- GREASE BOX.
 - UPRAST FAN WHEEL ACCESS PORT.
 - 36" TALL STRAIGHT WIND BAND EXTENSION 13 (SHIPS LOOSE).
 - 3 GUY LINE EYE BOLTS - USED FOR 3 GUY LINE THE (OFF PRINTS).
 - SUBSEQUENTLY INSTALLED AT PLANT - FOR GREASE BUCTS.
 - EDM WIRING PACKAGE - PWM SIGNAL FROM ECM'S PREWIRE (TELCO MOTOR), CCM ROTATION.
 - 2 YEAR PARTS WARRANTY.

REVISIONS

| NO | DESCRIPTION | DATE |
|----|-------------|------|
| | | |

CAPTIVEARE
HBT Foodservice
www.captiveare.com

104 W 8th St, Suite 204, Kansas City, MO, 64105 PHONE: (816) 221-8575 FAX: (816) 221-8511 EMAIL: reg98@captiveare.com

Freddy's - Bentonville, AR
BENTONVILLE, AR, 72712

DATE: 9/10/2024
DWG.#: 7034766
DRAWN BY: michael.co
SCALE: 1/2" = 1'-0"
MASTER DRAWING

SHEET NO. 3

BC PROJECT # 24630
ARKANSAS FE CDA 4806

This drawing has been prepared by the Engineer, or under his supervision. This drawing is provided as an instrument of service by the Design Engineer and is intended for use on this project only. Pursuant to the Architectural Works Copyright Protection Act of 1990, all drawings, specifications, data and designs, including the overall form, arrangement and composition of spaces and elements appearing herein, constitute the original, copyrighted work of the Design Engineer. Any reproduction, use, or disclosure of information contained herein without prior written consent of the Engineer is strictly prohibited. © 2024 BC Engineers, Inc.

BC ENGINEERS INCORPORATED
5720 Reeder Shawnee, KS 66203 (913)282-1772

a new restaurant for:
Freddy's
3308 SW 14TH ST Bentonville, AR 71712

date
10/23/2024
drawn by
AK/FO
checked by
DS/EK
revisions

sheet number
M-302

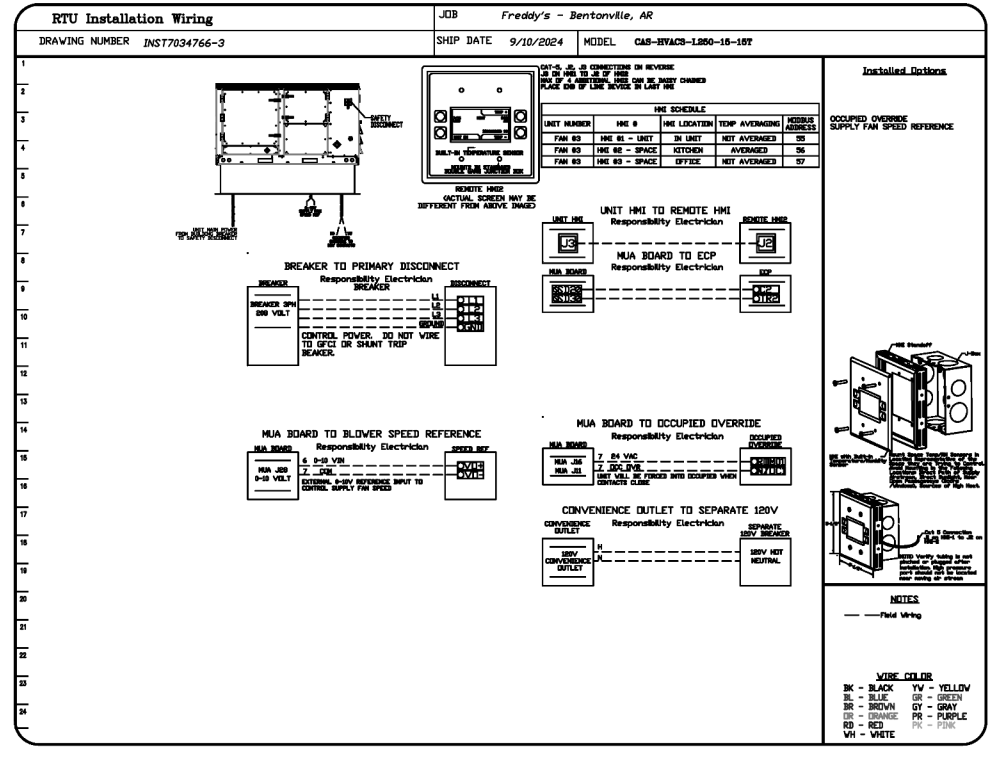
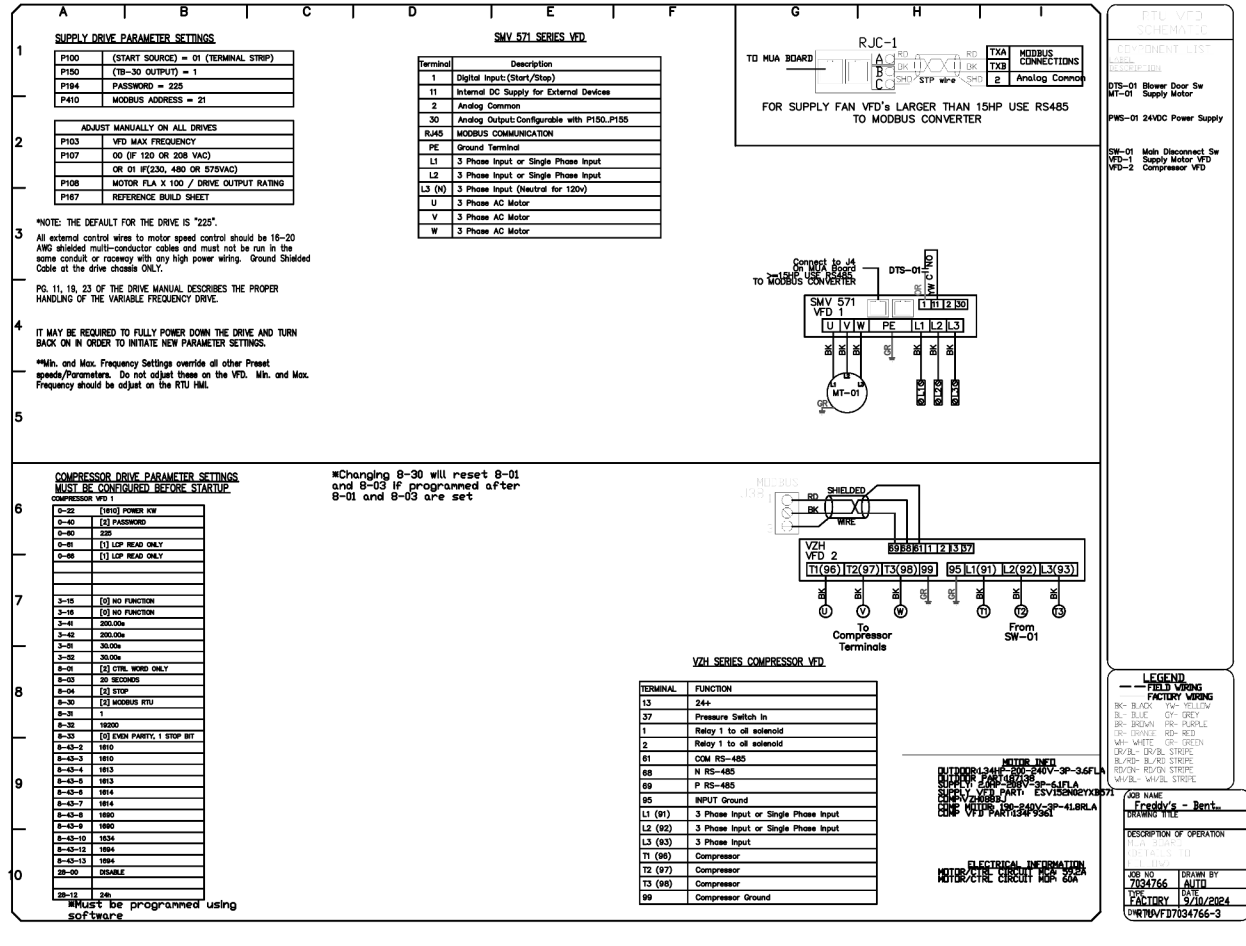
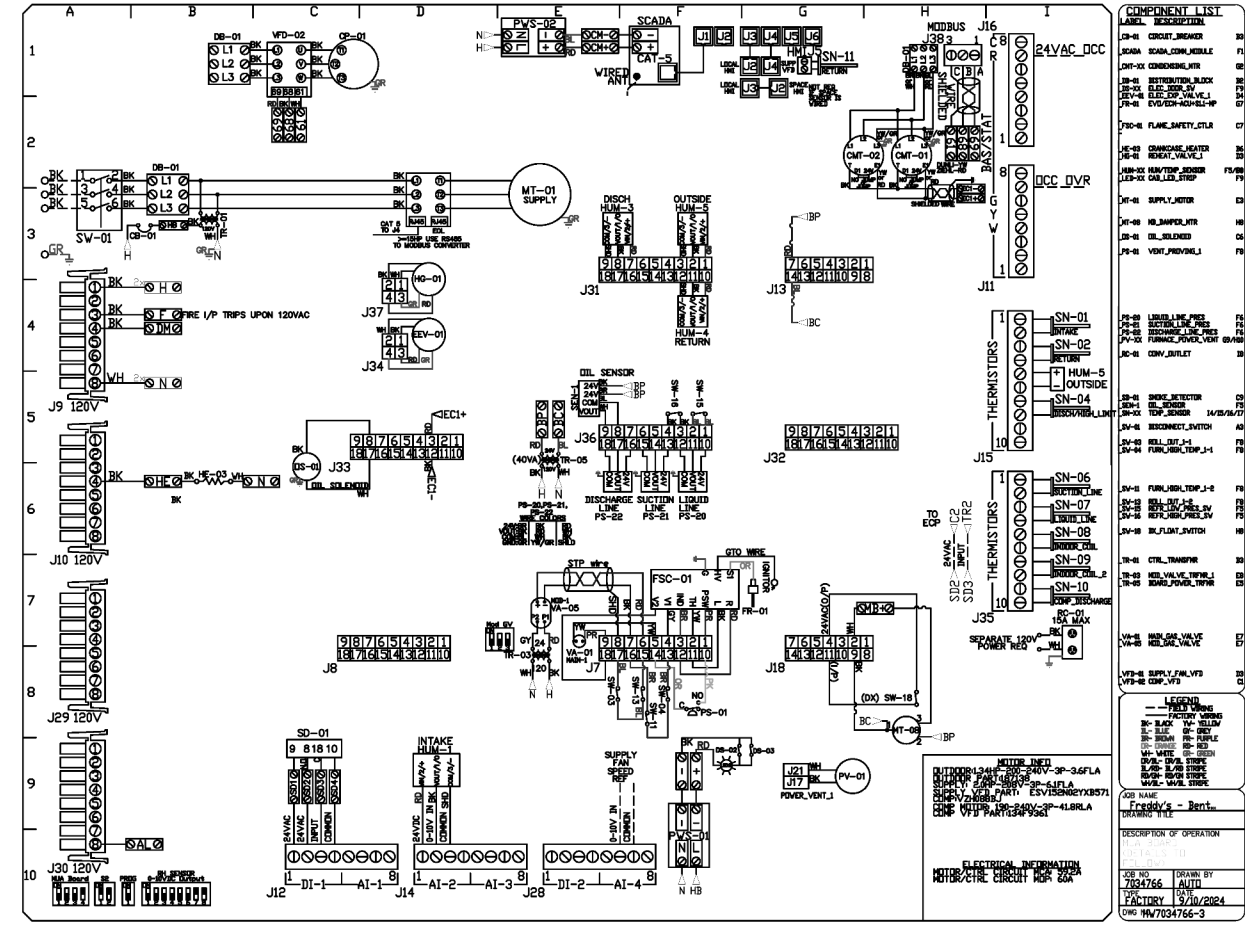
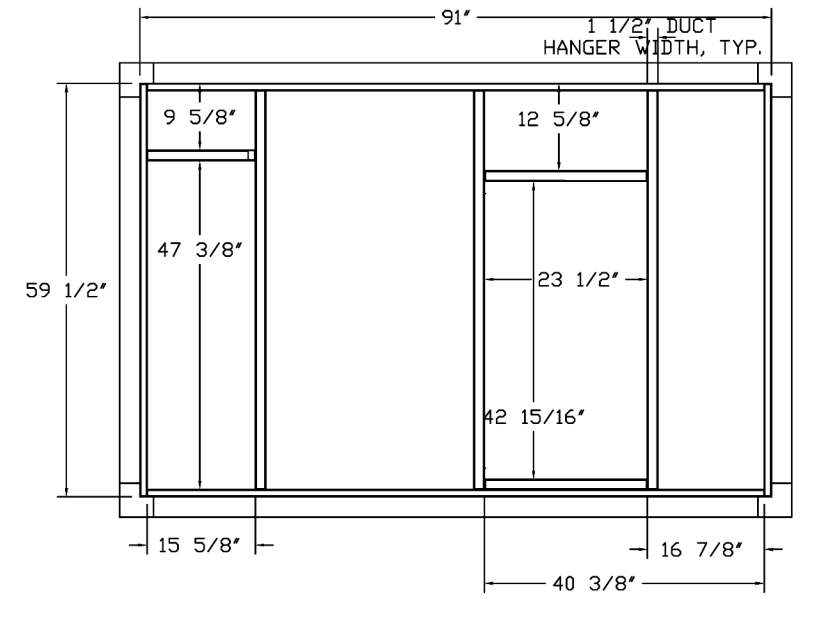
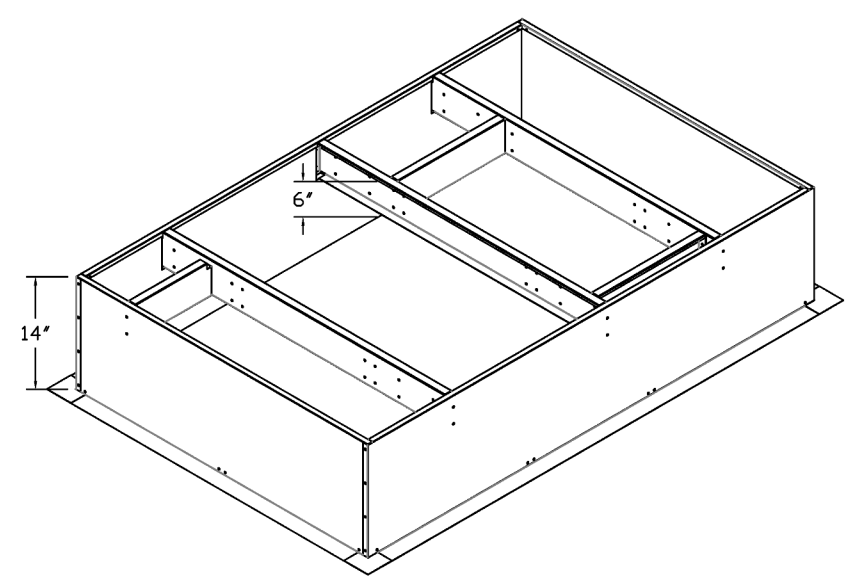
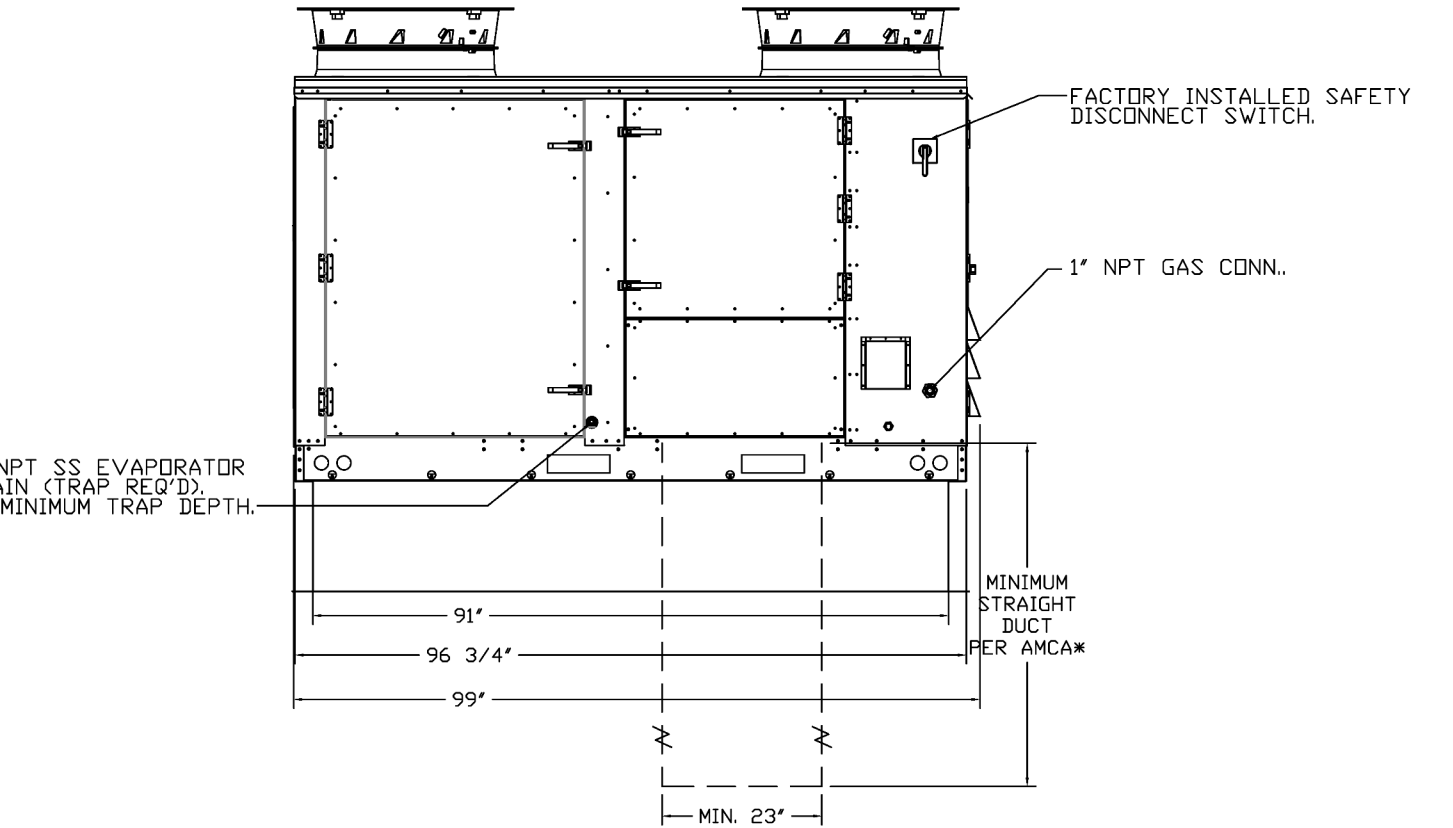
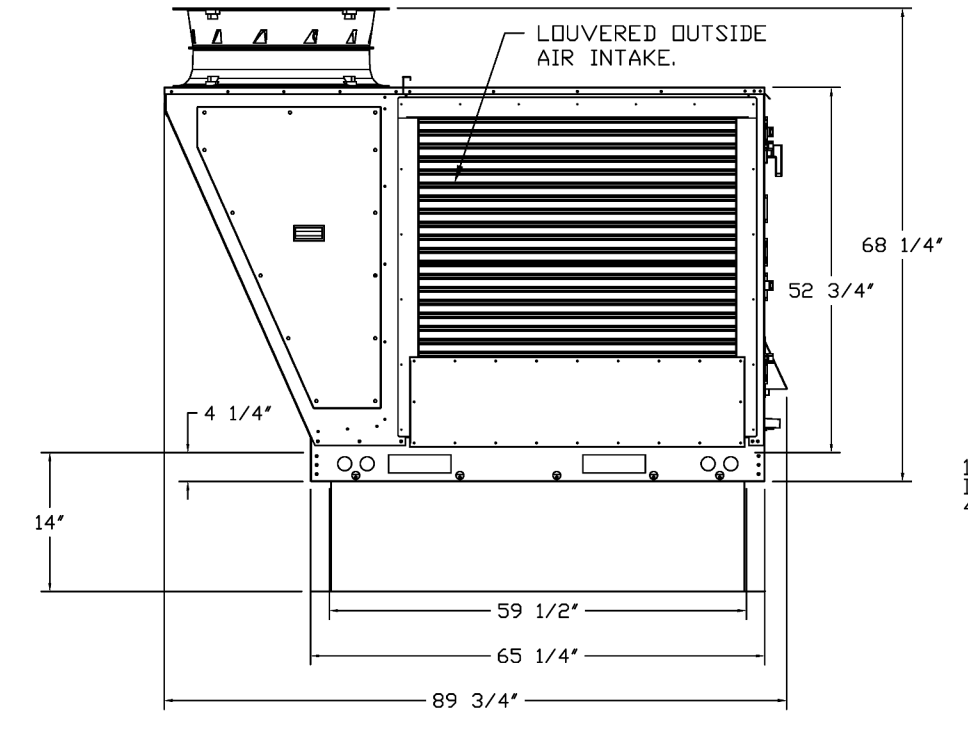
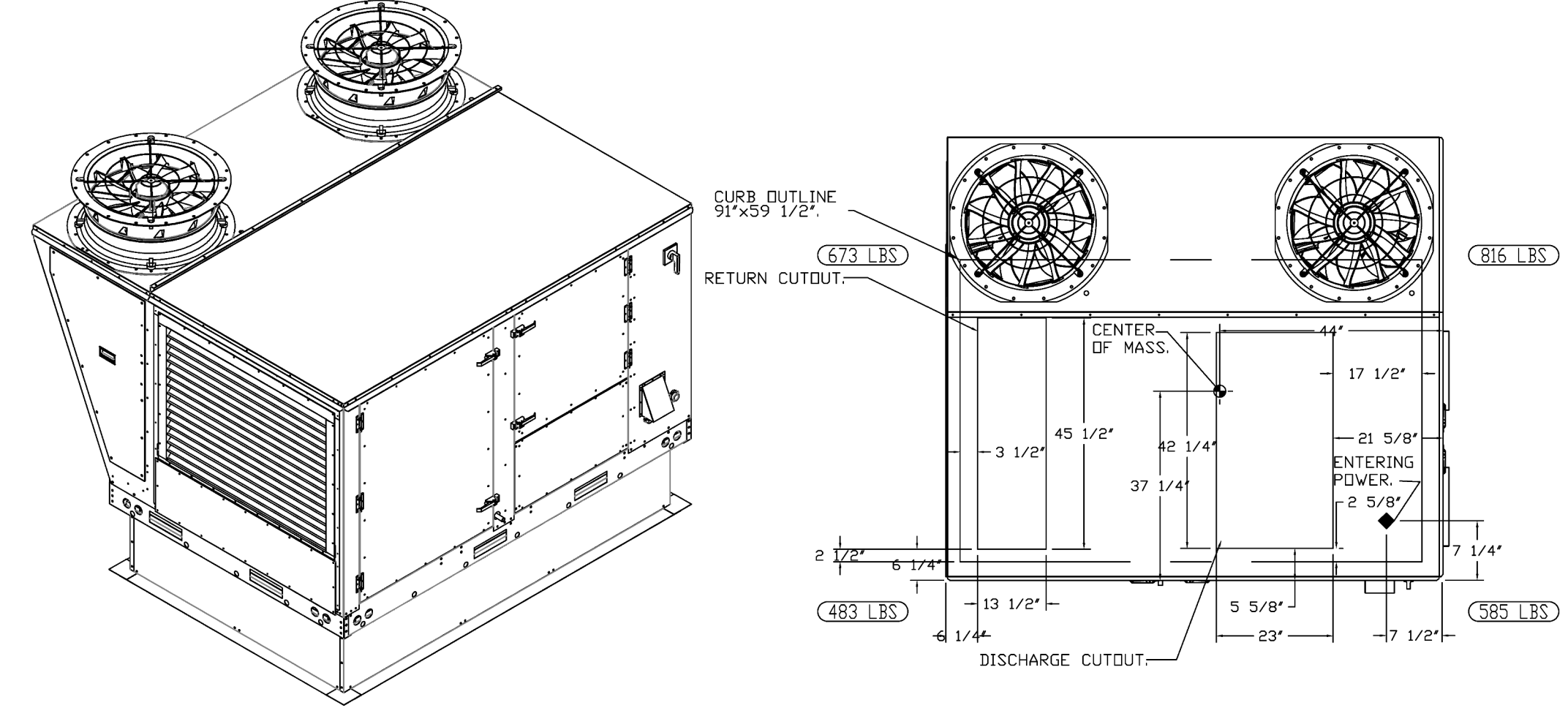
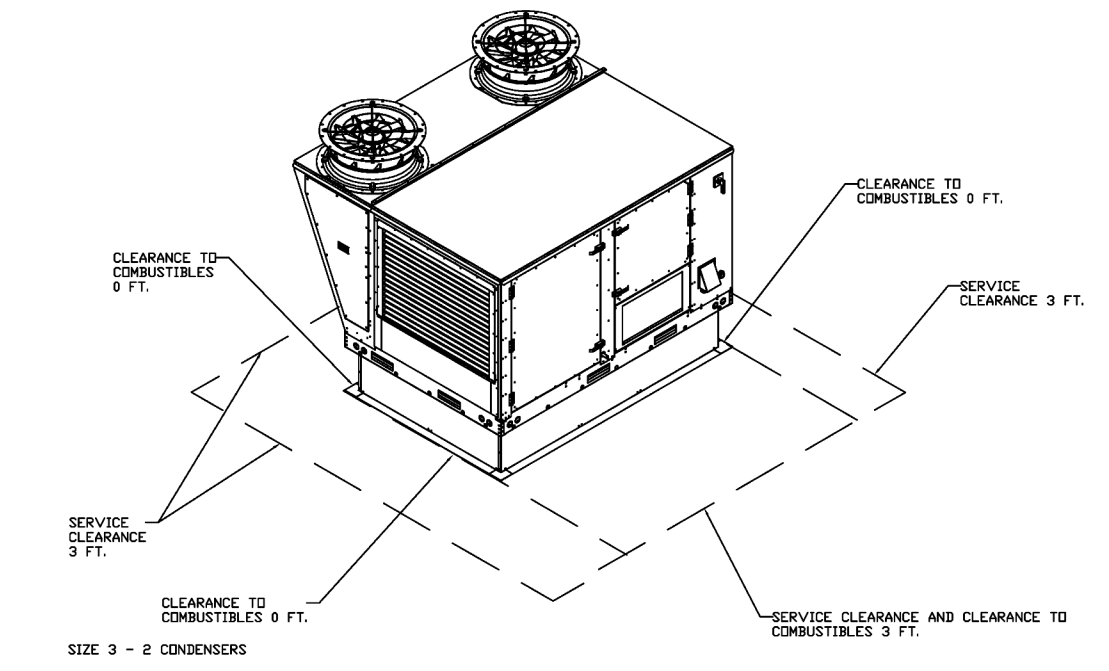
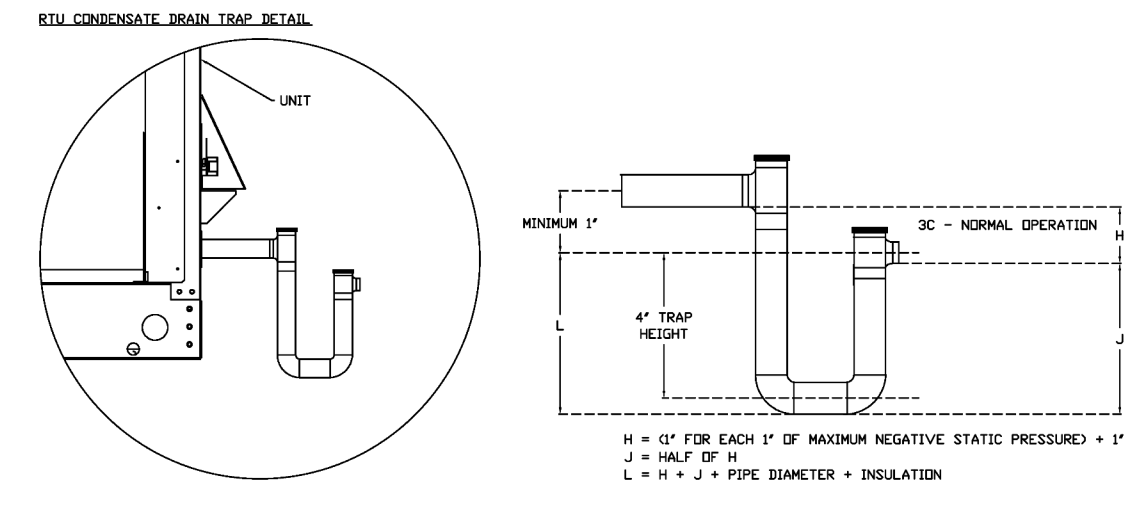
drawing type
Permit
project number
23006.26



FAN #3 CAS-HVAC3-1,250-15-15T - HEATER (ITEM 74.3)

- NOTES:
- DO NOT OBSTRUCT OUTSIDE AIR INLET, OUTSIDE AIR COIL OR OUTSIDE AIR FAN.
 - DENOTES CORNER WEIGHT.
 - ROOF OPENING MUST BE 2' SMALLER THAN CURB DIMENSIONS IN BOTH DIRECTIONS.
 - CONNECTION FROM BREAKER TO UNITS SAFETY DISCONNECT SWITCH TO BE COPPER WIRE ONLY.
 - EXTERIOR GAS CONNECTION PROVIDED BY FACTORY WITH QUICK SEAL AND ANTI-ROTATION BRACKET.

*NOTE: SUPPLY DUCT MUST BE INSTALLED TO MEET SMACNA STANDARDS. A MINIMUM STRAIGHT DUCT LENGTH MUST BE MAINTAINED DOWNSTREAM OF UNIT DISCHARGE AS OUTLINED IN AMCA PUBLICATION 201. WHEN USING RECTANGULAR DUCTWORK, ELBOWS MUST BE RADIUS THROAT, RADIUS BACK WITH TURNING VANES. FLEXIBLE DUCTWORK AND SQUARE THROAT/SQUARE BACK ELBOWS SHOULD NOT BE USED. ANY TRANSITION AND/OR TURNS IN THE DUCTWORK WILL CAUSE SYSTEM EFFECT. SYSTEM EFFECT WILL DRASTICALLY INCREASE STATIC PRESSURE AND REDUCE AIRFLOW. DO NOT RELY ON UNIT TO SUPPORT DUCT IN ANY WAY. FAILURE TO PROPERLY SIZE DUCTWORK MAY CAUSE SYSTEM EFFECTS AND REDUCE PERFORMANCE OF THE EQUIPMENT. SUGGESTED STRAIGHT DUCT SIZE IS 23" x 39".



REVISIONS

| NO. | DESCRIPTION | DATE |
|-----|-------------|------|
| 1 | | |
| 2 | | |
| 3 | | |
| 4 | | |

CAPTIVE
HBT Foodservice
www.captivehbt.com
104 W 9th St Suite 204, Kansas City, MO, 64108 PHONE: (816) 221-8575 FAX: (816) 221-8511 EMAIL: reg@hbt.com

Freddy's - Bentonville, AR
BENTONVILLE, AR, 72712

DATE: 9/10/2024
DWG.#: 7034766
DRAWN BY: michael.co
SCALE: 1/2" = 1'-0"
MASTER DRAWING
SHEET NO. 4

BC PROJECT # 24630
ARKANSAS FE CDA 4806

This drawing has been prepared by the Engineer, or under his supervision. This drawing is provided as an instrument of service by the Designer/Engineer and is intended for use on the project only. Pursuant to the Architectural Works Copyright Protection Act of 1990, all drawings, specifications, data and designs, including the overall form, arrangement and composition of letters and elements appearing hereon, constitute the original, copyrighted work of the Designer/Engineer. Any reproduction, use, or disclosure of information contained herein without prior written consent of the Engineer is strictly prohibited. © 2024 BC Engineers, Inc.

BC ENGINEERS INCORPORATED
5720 Reeder Shawnee, KS 66203 (913)282-1772

a new restaurant for:
Freddy's

3308 SW 14TH ST Bentonville, AR 71712

date 10/23/2024
drawn by AK/FO
checked by DS/EK
revisions

sheet number
M-303

drawing type Permit
project number 23006.26