

Report By:

**Wesley John
2606 Desert Sage Dr
Katy, TX 77449**

Report: TECH

Function: Test, Adjust, & Balance

Date: 12/22/2025

Completed By: Wesley John

PROJECT

**12-22-25 Whataburger #1659 - League City,
TX**

2121 E LEAGUE CITY PKWY

LEAGUE CITY, TX 77573

Client

Wesley John

Project: 12-22-25 Whataburger #1659 - League City, TX

Table Of Contents

Section	Page #
Checklist Data	3
Balance Schedule	12
AHU/RTU	13
Diffuser Supply (GRD)	19
FAN - Exhaust	21
Kitchen Hood Type I	28

CheckList List

- 01: RTU's
- 02: EF's
- 03: Hoods
- 04: Final Checks

12-22-25 Whataburger #1659 - League City, TX

CheckList Information

Name : 01: RTU's **Status :** Completed
Assigned Organization : MULTIPLE **Asset :**
Requesting Organization : National TAB
Created Date : 11/25/2025 - Natasha Louw - National TAB
Completed Date : 12/22/2025 - Wesley John - National TAB

CheckList Item Details

RTU's/AHU's

Thermostats installed and have power? N/A

Comment:

NO THERMOSTATS ON SITE. RTUS ARE CONTROLLED BY BAS AND SPACE TEMP SENSOR.

All diffusers and grilles are installed and match design? Pass

Comment:

Motors are all operating below the FLA rating? Pass

Comment:

Is gas piping installed and valves turned on? N/A

Comment:

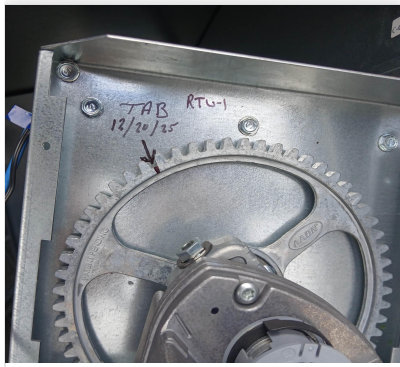
ELECTRIC HEAT

Unit free of noticeable noise and vibration Pass

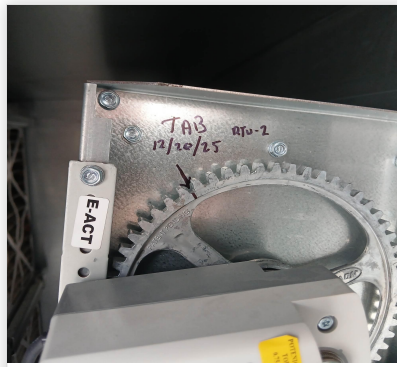
Comment:

Final outside air damper position is set manually and marked with permanent marker? Pass

Comment:



12/22/2025



12/22/2025

Supply airflow is 0 to +10%?

Pass

Comment:

Outside airflow is 0 to +10%?

Pass

Comment:

Return balance dampers are confirmed to be 100% open (if installed)?

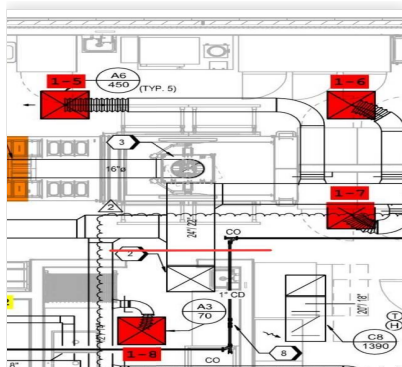
Pass

Comment:

Screenshot of the GRD marked up with supply and return traverse locations for RTU-1 (Add picture here)

Pass

Comment:

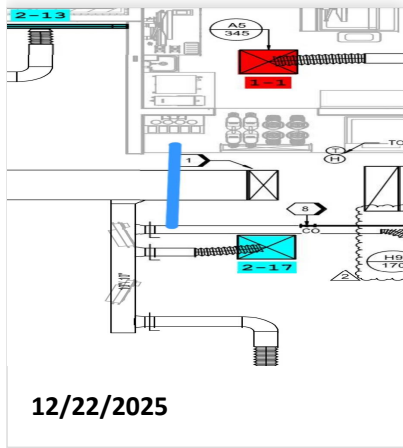


12/22/2025

Screenshot of the GRD marked up with supply and return traverse locations for RTU-2 (Add picture here)

Pass

Comment:



For each unit supply, is the flow hood reading within 10% of the final traverse reading? If not do you feel any major points of leakage

Pass

Comment:

For each unit return, is the flow hood reading within 10% of the final traverse reading? If not do you feel any major points of leakage

N/A

Comment:

UNABLE TO ACCESS RETURN DUCT FOR TOTAL RETURN TRAVERSE TESTS. NO LEAKAGE OBSERVED.

12-22-25 Whataburger #1659 - League City, TX

CheckList Information

Name : 02: EF's **Status :** Completed
Assigned Organization : MULTIPLE **Asset :**
Requesting Organization : National TAB
Created Date : 11/25/2025 - Natasha Louw - National TAB
Completed Date : 12/20/2025 - Wesley John - National TAB

CheckList Item Details

EF's

Rotation is correct? Pass

Comment:

Belts are tight? N/A

Comment:

DIRECT DRIVE

Hinge kit installed installed on hood fan? Pass

Comment:

Lean fan back. Is grease duct installation adequate and is duct ran all the way to the base of the fan? Pass

Comment:

Flex conduit is long enough so that fan can be completely tilted back? Pass

Comment:

There is no major leakage around base of fan? Pass

Comment:

Is the motor operating below the motor FLA rating? Pass

Comment:

For restroom fan(s) is the back draft damper installed and can it fully open?

Pass

Comment:

Unit free of noticeable noise and vibration?

Pass

Comment:

Exhaust airflow is 0 to +10%?

Pass

Comment:

12-22-25 Whataburger #1659 - League City, TX

CheckList Information

Name : 03: Hoods **Status :** Completed
Assigned Organization : MULTIPLE **Asset :**
Requesting Organization : National TAB
Created Date : 11/25/2025 - Natasha Louw - National TAB
Completed Date : 12/20/2025 - Wesley John - National TAB

CheckList Item Details

HOODS

All hood filters installed and accounted for? Pass

Comment:

Hoods are wired and have power? Pass

Comment:

Hood is free of alarms? Pass

Comment:

Hood is free of damage? Pass

Comment:

Quarter or full vertical end panels are installed if specified? Pass

Comment:

12-22-25 Whataburger #1659 - League City, TX

CheckList Information

Name : 04: Final Checks **Status :** Completed
Assigned Organization : MULTIPLE **Asset :**
Requesting Organization : National TAB
Created Date : 11/25/2025 - Natasha Louw - National TAB
Completed Date : 12/20/2025 - Wesley John - National TAB

CheckList Item Details

FINAL CHECKS

Is space free of drafting? Pass

Comment:

Is space comfortable in all areas? Pass

Comment:

Is the space free of ventilation noise? Pass

Comment:

List kitchen equipment turned on for testing

Comment:

KITCHEN EQUIPMENT NOT STARTED AT TIME OF BALANCE.

List smoke candle type used

Comment:

45 SECOND SMOKE CARTRIDGE

HOOD CAPTURE TEST

Smoke test capture % - Perimeter of hood

Comment:

100

Smoke test capture % - Top of cooking surface

Comment:

100

WITNESS

Date test was completed

12/20/2025

Comment:

TAB tech name / Firm

Comment:

WESLEY JOHN / NATIONAL TAB

Site super name / Firm

Comment:

NO SUPER PRESENT AT TIME OF BALANCING

Owner representative name / Firm (if Applicable)

Comment:

N/A

BUILDING PRESSURE

Do actual net building airflow, design net building airflow, and pressure coincide? If not why? (All three should either be positive or negative)

Pass

Comment:

Is the building pressure at least +0.02"? If not, do you see any obvious areas of external building that aren't sealed?

Pass

Comment:

AIR BALANCE SCHEDULE

UNIT	AREA SERVED	HVAC SUPPLY		HVAC RETURN		HVAC OUTDOOR		OA %		HOOD MAKE-UP		HOOD EXHAUST		GENERAL EXH.	
		DESIGN	ACTUAL	DESIGN	ACTUAL	DESIGN	ACTUAL	DESIGN	ACTUAL	DESIGN	ACTUAL	DESIGN	ACTUAL	DESIGN	ACTUAL
RTU-1	KITCHEN	3850	3932	1390	1443	2460	2489	63.9%	63.3%						
RTU-2	DINING	2050	2117	500	548	1550	1569	75.6%	74.1%						
KEF-1	KITCHEN HD											1995	2004		
KEF-2	KITCHEN HD											1216	1260		
EF-1	RESTROOMS													300	311
TOTALS		5900	6049	1890	1991	4010	4058			0	0	3211	3264	300	311

NET BUILDING AIRFLOW CALCULATION

TOTALS	DESIGN	ACTUAL
TOTAL OA	4010	4058
TOTAL EXHAUST	3511	3575
NET AIRFLOW	499	483

DOOR TESTED	BUILDING PRESSURE MEASUREMENTS (IN. H2O)
FRONT	0.023
SIDE	0.021
REAR	0.021
AVERAGE	0.0217

FINAL CHECKS

ACTUAL NET AIRFLOW COINCIDES WITH DESIGN: ✓

MEASURED PRESSURES COINCIDES WITH ACTUAL NET AIRFLOW: ✓

NOTES:

Wesley John

Project: 12-22-25 Whataburger #1659 - League City, TX

System/Unit: AHU/RTU

Asset: RTU1

AREA: KITCHEN

Unit Data	
	Actual
MFG	AAON
Serial Num	202510-BNEP35339
Model Num	RNA-020-C-A-8-FAB04-A04M0
Num OA Filters 1	3
OA Filter Size 1	20x25x1
Num Final Filter 1	6
Final Filter Size 1	20x25x2

Motor Data		
	Design	Actual
Motor MFG	-	WEG
Frame	-	213/5T
Horsepower	3.00	3.00
Motor Rpm	-	1175
Phase	-	3
Rated Voltage	208	230
Rated Amperage	-	8.32

Test Data		
	Design	Actual
SF CFM (Traverse)	-	3932
SF CFM	3850	3756
SF RPM	928	999
MOTOR RPM	-	999
RA CFM (Traverse)	-	NOT ACCESSIBLE
RA CFM	1390	1267
OA CFM	2460	2489
RL Voltage	-	213/212/212
RL Amperage	-	6.6/6.5/6.3
SF System SetPt	-	51.0 Hz
RA Damper Position	-	1 1/4"
Min OA Damper Position	-	1 1/4"
Min OA Damper Type	-	OPPOSED BLADE

Performance Data		
	Design	Actual
MA Plenum SP	-	-0.45"
Fan Suction SP	-	-0.80"
Fan Discharge SP	-	0.30"
Total ESP	0.75"	0.75"
Fan Total SP	-	1.10"

General	
	Actual
Unit free of Damage	YES
Fan Rotation Correct	YES
Unit Filters Clean	YES
Condensate Drain Installed	YES

Completed By: Wesley John on 12/22/2025

Unit Data - PHOTO LOG



12/22/2025

Wesley John

Project:12-22-25 Whataburger #1659 - League City, TX

AHU/RTU

Diffuser Supply (GRD)

RTU1/KITCHEN

Asset									
Asset Name	Location	Type	Size	DESIGN CFM	AK	CFM(1)	CFM(2)	FINAL CFM	% to design
SGRD1	DRIVE-THRU	A5	10"	345	1.0	297	-	323	93.6
SGRD2	DRIVE-THRU	P1	8"	200	1.0	223	-	209	104.5
SGRD3	KITCHEN	A6	12"	450	1.0	320	-	414	92.0
SGRD4	KITCHEN	A6	12"	450	1.0	448	-	461	102.4
SGRD5	KITCHEN	A6	12"	450	1.0	395	-	430	95.6
SGRD6	KITCHEN	A6	12"	450	1.0	461	-	470	104.4
SGRD7	KITCHEN	A6	12"	450	1.0	399	-	422	93.8
SGRD8	KITCHEN	A3	6"	70	1.0	76	-	72	102.9
SGRD9	OFFICE	A3	6"	190	1.0	184	-	193	101.6
SGRD10	FOH	A5	10"	320	1.0	236	-	307	95.9
SGRD11	FOH	H10	12"	150	1.0	332	-	142	94.7
SGRD12	FOH	A5	10"	175	1.0	211	-	169	96.6
SGRD13	RESTROOM	B3	6"	75	1.0	117	-	73	97.3
SGRD14	RESTROOM	B3	6"	75	1.0	130	-	71	94.7
Total				3850		3829	0	3756	97.56%

Completed By: Wesley John on 12/22/2025

Wesley John

Project: 12-22-25 Whataburger #1659 - League City, TX

System/Unit: AHU/RTU

Asset: RTU2

AREA:DINING

Unit Data	
	Actual
MFG	AAON
Serial Num	202510-ANEK35332
Model Num	RNA-013-B-A-8-FAB04-A04M0
Num OA Filters 1	3
OA Filter Size 1	20x25x1
Num Final Filter 1	4
Final Filter Size 1	20x25x2

Motor Data		
	Design	Actual
Motor MFG	-	WEG
Frame	-	143/5T
Horsepower	2.00	2.00
Motor Rpm	-	1740
Phase	3	3
Rated Voltage	208	200
Rated Amperage	-	6.19

Test Data		
	Design	Actual
SF CFM (Traverse)	-	2117
SF CFM	2050	2031
SF RPM	1184	1015
MOTOR RPM	-	1015
RA CFM (Traverse)	-	NOT ACCESSIBLE
RA CFM	500	548
OA CFM	1550	1569
RL Voltage	-	212/212/212
RL Amperage	-	3.1/3.0/3.1
SF System SetPt	-	35.0 Hz
RA Damper Position	-	1"
Min OA Damper Position	-	4"
Min OA Damper Type	-	OPPOSED BLADE

Performance Data		
	Design	Actual
MA Plenum SP	-	-0.12"
Fan Suction SP	-	-0.31"
Fan Discharge SP	-	0.21"
Total ESP	0.50"	0.33"
Fan Total SP	-	0.52"

General	
	Actual
Unit free of Damage	YES
Fan Rotation Correct	YES
Unit Filters Clean	YES
Condensate Drain Installed	YES

Completed By: Wesley John on 12/22/2025

Unit Data - PHOTO LOG



12/22/2025

Wesley John

Project:12-22-25 Whataburger #1659 - League City, TX

AHU/RTU

Diffuser Supply (GRD)

RTU2/DINING

Asset									
Asset Name	Location	Type	Size	DESIGN CFM	AK	CFM(1)	CFM(2)	FINAL CFM	% to design
SGRD1	ENTRANCE	P3	8"	100	1.0	146	126	102	102.0
SGRD2	DINING	P3	8"	100	1.0	117	99	106	106.0
SGRD3	DINING	P3	8"	100	1.0	153	133	98	98.0
SGRD4	DINING	P3	8"	100	1.0	139	118	94	94.0
SGRD5	DINING	P3	8"	100	1.0	128	107	101	101.0
SGRD6	DINING	P3	8"	100	1.0	133	114	96	96.0
SGRD7	DINING	P3	8"	100	1.0	99	87	94	94.0
SGRD8	DINING	P3	8"	100	1.0	117	103	107	107.0
SGRD9	DINING	P3	8"	100	1.0	132	115	102	102.0
SGRD10	DINING	P3	8"	100	1.0	144	125	98	98.0
SGRD11	DINING	P3	8"	100	1.0	119	100	103	103.0
SGRD12	DINING	P3	8"	100	1.0	128	107	101	101.0
SGRD13	DINING	P3	8"	100	1.0	153	135	93	93.0
SGRD14	DINING	A4	8"	145	1.0	132	115	139	95.9
SGRD15	DINING	A4	8"	145	1.0	140	122	151	104.1
SGRD16	DINING	A4	8"	145	1.0	133	113	143	98.6
SGRD17	CUSTOMER SERVICE	A4	8"	145	1.0	153	130	137	94.5
SGRD18	CUSTOMER SERVICE	H9	8"	170	1.0	149	127	166	97.6
Total				2050		2415	2076	2031	99.07%

Completed By: Wesley John on 12/22/2025

Wesley John

Project:12-22-25 Whataburger #1659 - League City, TX

Diffuser Supply (GRD)

RTU1/KITCHEN

Asset									
Asset Name	Location	Type	Size	DESIGN CFM	AK	CFM(1)	CFM(2)	FINAL CFM	% to design
SGRD1	DRIVE-THRU	A5	10"	345	1.0	297	-	323	93.6
SGRD2	DRIVE-THRU	P1	8"	200	1.0	223	-	209	104.5
SGRD3	KITCHEN	A6	12"	450	1.0	320	-	414	92.0
SGRD4	KITCHEN	A6	12"	450	1.0	448	-	461	102.4
SGRD5	KITCHEN	A6	12"	450	1.0	395	-	430	95.6
SGRD6	KITCHEN	A6	12"	450	1.0	461	-	470	104.4
SGRD7	KITCHEN	A6	12"	450	1.0	399	-	422	93.8
SGRD8	KITCHEN	A3	6"	70	1.0	76	-	72	102.9
SGRD9	OFFICE	A3	6"	190	1.0	184	-	193	101.6
SGRD10	FOH	A5	10"	320	1.0	236	-	307	95.9
SGRD11	FOH	H10	12"	150	1.0	332	-	142	94.7
SGRD12	FOH	A5	10"	175	1.0	211	-	169	96.6
SGRD13	RESTROOM	B3	6"	75	1.0	117	-	73	97.3
SGRD14	RESTROOM	B3	6"	75	1.0	130	-	71	94.7
Total				3850		3829	0	3756	97.56%

Completed By: Wesley John on 12/22/2025

RTU2/DINING

Asset									
Asset Name	Location	Type	Size	DESIGN CFM	AK	CFM(1)	CFM(2)	FINAL CFM	% to design
SGRD1	ENTRANCE	P3	8"	100	1.0	146	126	102	102.0
SGRD2	DINING	P3	8"	100	1.0	117	99	106	106.0
SGRD3	DINING	P3	8"	100	1.0	153	133	98	98.0
SGRD4	DINING	P3	8"	100	1.0	139	118	94	94.0
SGRD5	DINING	P3	8"	100	1.0	128	107	101	101.0
SGRD6	DINING	P3	8"	100	1.0	133	114	96	96.0
SGRD7	DINING	P3	8"	100	1.0	99	87	94	94.0
SGRD8	DINING	P3	8"	100	1.0	117	103	107	107.0
SGRD9	DINING	P3	8"	100	1.0	132	115	102	102.0
SGRD10	DINING	P3	8"	100	1.0	144	125	98	98.0
SGRD11	DINING	P3	8"	100	1.0	119	100	103	103.0
SGRD12	DINING	P3	8"	100	1.0	128	107	101	101.0
SGRD13	DINING	P3	8"	100	1.0	153	135	93	93.0
SGRD14	DINING	A4	8"	145	1.0	132	115	139	95.9
SGRD15	DINING	A4	8"	145	1.0	140	122	151	104.1
SGRD16	DINING	A4	8"	145	1.0	133	113	143	98.6
SGRD17	CUSTOMER SERVICE	A4	8"	145	1.0	153	130	137	94.5
SGRD18	CUSTOMER SERVICE	H9	8"	170	1.0	149	127	166	97.6
Total				2050		2415	2076	2031	99.07%

Completed By: Wesley John on 12/22/2025

TRAVERSES/

Asset					
Asset Name	Size	DESIGN CFM	VEL(1)	FINAL CFM	% to design
RETURN TRAVERSE - RTU 1	NA	1390	NA		-
RETURN TRAVERSE - RTU 2	NA	500	NA		-
SUPPLY TRAVERSE - RTU 1	24x22	3850	1072	3932	102.1
SUPPLY TRAVERSE - RTU 2	12x30	2050	847	2117	103.3
Total		7790		6049	77.65%

Completed By: Wesley John on 12/22/2025

Asset	Notes	Date	Written By
RETURN TRAVERSE - RTU 1	NO ACCESSIBLE LOCATION FOR RTU-1 RETURN TRAVERSE. NO HORIZONTAL DUCT RUN. FLEX CONNECTS DIRECTLY TO VERTICAL HARD DUCT THAT IS TOO HIGH TO REACH.	12/22/2025	Wesley John
RETURN TRAVERSE - RTU 2	NO ACCESSIBLE LOCATION FOR RTU-2 RETURN TRAVERSE. HORIZONTAL DUCT RUN LOCATED ABOVE HARD CEILING. VERTICAL DUCT IS TOO CLOSE TO SUPPLY DUCT TO TAKE READINGS ON VERTICAL.	12/22/2025	Wesley John

Wesley John

Project: 12-22-25 Whataburger #1659 - League City, TX

System/Unit: FAN - Exhaust

Asset: EF1

AREA:RESTROOM

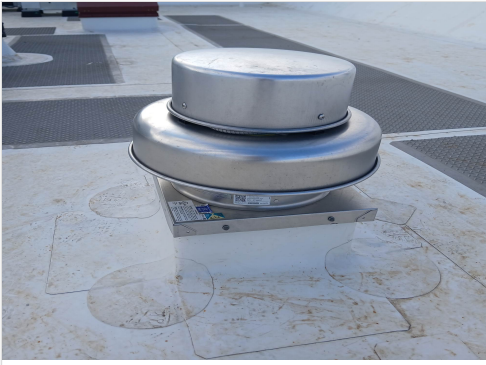
Unit Data		
	Design	Actual
MFG	GREENHECK	GREENHECK
Model Num	G-080-VG	G-080-VG-1-17-X
Serial Num	-	27386037
Type	CENTRIFUGAL	CENTRIFUGAL
Configuration	DOWNBLAST	DOWNBLAST

Motor Data		
	Design	Actual
Motor MFG	-	BROAD-OCEAN MOTOR
Frame	-	NL
Horsepower	0.10	0.10
Motor Rpm	-	1750
Phase	1	1
Voltage (rated)	120	115
Amperage (rated)	-	1.38
Service Factor	-	NL

Test Data		
	Design	Actual
CFM	300	311
Fan RPM	1680	DIRECT DRIVE
Fan Rotation	-	CW
Motor RPM	-	DIRECT DRIVE
System SetPt	-	7.5/10
RL Voltage	-	120
RL Amperage	-	0.92
Total ESP	0.50"	0.26"
Fan Inlet SP	-	-0.26"
Fan Discharge SP	-	ATM

Completed By: Wesley John on 12/22/2025

Unit Data - PHOTO LOG



12/22/2025

Wesley John

Project:12-22-25 Whataburger #1659 - League City, TX

FAN - Exhaust

Diffuser Ret/Exh (GRD)

EF1/RESTROOM

Asset									
Asset Name	Location	Type	Size	DESIGN CFM	AK	CFM(1)	CFM(2)	FINAL CFM	% to design
EGRD1	RESTROOM	F1	8X8	150	1.0	163	144	159	106.0
EGRD2	RESTROOM	F1	8X8	150	1.0	208	166	152	101.3
Total				300		371	310	311	103.67%

Completed By: Wesley John on 12/22/2025

Wesley John

Project: 12-22-25 Whataburger #1659 - League City, TX

System/Unit: FAN - Exhaust

Asset: KEF1

AREA: KITCHEN HD

Unit Data		
	Design	Actual
MFG	GREENHECK	CAPTIVE-AIRE
Model Num	CUE-140-VG	DU180HFA
Serial Num	-	7541810
Type	CENTRIFUGAL	CENTRIFUGAL
Configuration	UPBLAST	UPBLAST

Motor Data		
	Design	Actual
Motor MFG	-	TELCO
Frame	-	NL
Horsepower	2.00	2.00
Motor Rpm	-	1200
Phase	1	3
Voltage (rated)	208	208
Amperage (rated)	-	14.0
Service Factor	-	NL

Test Data		
	Design	Actual
CFM	1995	2004
Fan RPM	1517	828
Fan Rotation	-	CCW
Motor RPM	-	828
System SetPt	-	68%
RL Voltage	-	212
RL Amperage	-	3.8
Total ESP	1.00"	0.87"
Fan Inlet SP	-	-0.87"
Fan Discharge SP	-	ATM

Completed By: Wesley John on 12/22/2025

Unit Data - PHOTO LOG



12/22/2025

Wesley John

Project: 12-22-25 Whataburger #1659 - League City, TX

System/Unit: FAN - Exhaust

Asset: KEF2

AREA:KITCHEN HD

Unit Data		
	Design	Actual
MFG	GREENHECK	CAPTIVE-AIRE
Model Num	CUE-120-VG	DU50HFA
Serial Num	-	7541810
Type	CENTRIFUGAL	CENTRIFUGAL
Configuration	UPBLAST	UPBLAST

Motor Data		
	Design	Actual
Motor MFG	-	TELCO
Frame	-	NL
Horsepower	0.50	0.50
Motor Rpm	-	1800
Phase	1	1
Voltage (rated)	208	208
Amperage (rated)	-	3.8
Service Factor	-	NL

Test Data		
	Design	Actual
CFM	1216	1260
Fan RPM	1415	1197
Fan Rotation	-	CCW
Motor RPM	-	1197
System SetPt	-	62%
RL Voltage	-	212
RL Amperage	-	2.3
Total ESP	0.75"	0.56"
Fan Inlet SP	-	-0.56"
Fan Discharge SP	-	ATM

Completed By: Wesley John on 12/22/2025

Unit Data - PHOTO LOG



12/22/2025

Wesley John

Project: 12-22-25 Whataburger #1659 - League City, TX

System/Unit: Kitchen Hood Type I

Asset: HD1

AREA: KITCHEN

Unit Data		
	Design	Actual
MFG	H&K DALLAS INC	H&K DALLAS INC
Model Num	HKD _____	HKD027
Job / Serial Num	-	8175950-001
Type	TYPE I LOW PROXIMITY	TYPE I LOW PROXIMITY
Hood length	-	87"
Hood Width	-	56"

Test Data Exhaust		
	Design	Actual
Filter Type	-	BAFFLE
Filter Size 1	-	12x20
Filter Qty 1	-	8
Filter AK factor size 1	-	1.50
Filter Total AK Area	-	12.00
Filter1 FPM	-	139
Filter2 FPM	-	169
Filter3 FPM	-	183
Filter4 FPM	-	165
Filter5 FPM	-	160
Filter6 FPM	-	189
Filter7 FPM	-	183
Filter8 FPM	-	153
Filter Ave FPM(corr)	-	167
CFM	1995	2004

Cooking Equipment	
	Actual
Item 1	GRILL
Item 2	GRILL

Completed By: Wesley John on 12/22/2025

Unit Data - PHOTO LOG



12/22/2025

Wesley John

Project: 12-22-25 Whataburger #1659 - League City, TX

System/Unit: Kitchen Hood Type I

Asset: HD2

AREA: KITCHEN

Unit Data		
	Design	Actual
MFG	H&K DALLAS INC	H&K DALLAS INC
Model Num	HKD_____	HKD023
Job / Serial Num	-	8175948-001
Type	TYPE I LOW PROXIMITY	TYPE I LOW PROXIMITY
Hood length	-	73"
Hood Width	-	26"

Test Data Exhaust		
	Design	Actual
Filter Type	-	BAFFLE
Filter Size 1	-	12x20
Filter Size 2	-	12x16
Filter Qty 1	-	1
Filter Qty 2	-	3
Filter AK factor size 1	-	1.50
Filters AK factor size 2	-	1.16
Filter Total AK Area	-	4.98
Filter1 FPM	-	248
Filter2 FPM	-	272
Filter3 FPM	-	261
Filter4 FPM	-	233
Filter Ave FPM(corr)	-	253
CFM	1216	1260

Cooking Equipment	
	Actual
Item 1	FRYERS

Completed By: Wesley John on 12/22/2025

Unit Data - PHOTO LOG



12/22/2025