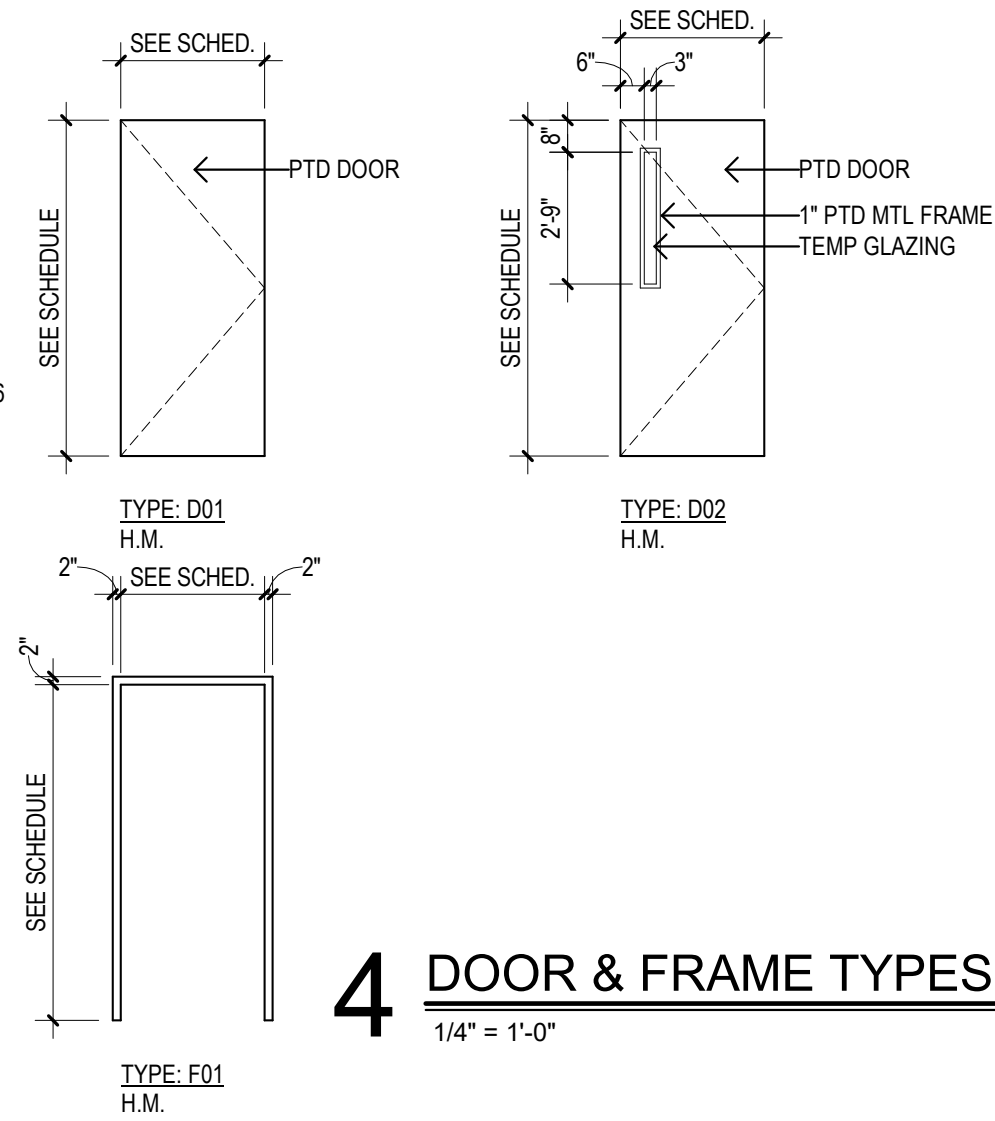


DOORS:
D-01 1-3/4" 18 GA SHOP PRIMED HM DOOR
D-02 1-3/4" 18 GA SHOP PRIMED HM DOOR WINNARROW LITE
FRAMES:
F-01 PTD 18GA HM DRYWALL TYPE, 3 ANCHORS PER JAMB (MIN)
F-02 PTD 18 GA HM DRYWALL TYPE, 3 ANCHORS PER JAMB (MIN)

HARDWARE:
H-01 PASSAGE WIDEABOLT OCCUPANT INDICATOR: RESTROOM
(3) BUTT HINGES TA2714 - 4"x4" MFG: MCKINNEY
(1) CLOSER 5300 SERIES W HOLD OPEN FUNCTION MFG: HAGER
(1) CYLINDRICAL PASSAGE LEVERSET 10U15 MFG: SARGENT
(1) B571 DEADBOLT OCCUPANT INDICATOR MFG: SCHLAGE FINISH: 626
(1) KICKPLATE K1050 F 8"x34" MFG: ROCKWOOD
(1) WALL STOP DS20 MFG: MCKEY
- SILENERS SR64 MFG: IVES
H-02 EGRESS
(3) BUTT HINGES TA2714 - 4"x4" MFG: MCKINNEY
(1) CLOSER 4040XP SERIES MFG: LCN
(1) EXIT DEVICE 99 SERIES MFG: VON DUPRIN
- CLASSROOM LEVER SET
(1) WALL STOP 404 MFG: ROCKWOOD
(1) KICKPLATE K1050 F 8"x34" MFG: ROCKWOOD
- SILENERS SR64 MFG: IVES
H-03 STORAGE
(3) BUTT HINGES TA2714 - 4"x4" MFG: MCKINNEY
(1) CLOSER 5300 SERIES
(1) LOCKSET 5300 SERIES MFG: HAGER
- STOREROOM FUNCTION
(1) WALL STOP 404 MFG: ROCKWOOD
- SILENERS SR64 MFG: IVES



4 DOOR & FRAME TYPES

1/4" = 1'-0"

GENERAL FINISH NOTES

- ROOM NUMBER** → ROOM NAME
WALL FINISH → WALL
BASE FINISH → BASE
FLOOR FINISH → FLOOR * SEE FINISH SCHED.
- REFER TO FINISH SCHEDULE AND PLAN FOR GENERAL FINISHES. REFER TO ALL INTERIOR FINISH NOTES, INTERIOR DRAWINGS (INCLUDING PLANS, ELEVATIONS & DETAILS)
 - REFER TO ANSI A960 FOR TYPICAL MOUNTING HEIGHTS
 - FLOOR FINISHES TO EXTEND BENEATH MILLWORK
 - GO TO INSTALL BASE ON ALL WALLS UNLESS OTHERWISE NOTED
 - ANY DESIGNATION MARKED - * SEE ELEVATIONS & FINISH SCHEDULE FOR ADDITIONAL INFORMATION
 - PATCH/REPAIR ALL EXISTING WALLS
 - PREP EXISTING FLOORS/SUBSTRATE PRIOR TO FLOOR INSTALL
 - PROVIDE FRP PANELING ALONG ALL WALLS OF MOP SINK
 - FUR WALL TO ALLOW NEW STAINLESS STEEL PANELING TO PASS IN FRONT OF EX. COLUMN
 - RUBBER FLOORING AT STAIR LANDINGS AND TREADS (BY LANDLORD)
 - PAINTED GYP ABOVE FRP/CERAMIC TILE FINISH
 - FULL HEIGHT CERAMIC WALL TILE (W-01)
 - ROLLER SHADES (W-04)
 - USE HALF TILE AS STARTER (CENTER ON DOOR)

REFLECTED CEILING PLAN KEY NOTES

- ROOM NAME** → ROOM NAME
ROOM # → ###
FINISH / HEIGHT → XXX | #'-##"
- CONTRACTOR TO COORDINATE ALL DISCIPLINES (MEP/FP) PRIOR AND DURING CONSTRUCTION
 - CONTRACTOR TO VERIFY ALL EXISTING CEILING HEIGHTS
 - EXISTING STRUCTURE ABOVE TO BE PAINTED (PT-02) SEE RCP FOR ADDITIONAL INFORMATION
 - PAINT ALL PIPING, CONDUIT, DUCTWORK, ETC. (PT-02) SEE RCP FOR ADDITIONAL INFORMATION
 - INFILL ANY EXISTING FLOOR/CEILING PENETRATIONS W/ CODE COMPLIANT FILLER FIRE STOPPING
 - PATCH/PAINT EXISTING CEILING/SLAB TO PROVIDE FLUSH CONDITIONS
 - PTD GWB SOFFIT TO CONCEAL EXISTING STOREFRONT/DOOR BRACING (PT-01.02)
 - NEW MECH LOUVER THRU EXISTING STOREFRONT PANEL- PROVIDE SEALANT ALL AROUND PENETRATION (BOTH SIDES)
 - 1-HR RATED PTD GWB ON MTL STUD ASSEMBLY ABOVE FINISH CEILING- MAINTAIN CONT. RATING (SEE SECTION)
 - PROVIDE FRAMING AND BLOCKING AS REQ'D TO INSTALL AIR CURTAIN (BRACE TO STRUCTURE ABOVE AS REQ'D)
 - PROVIDE "MULLION MATE" (OR EQUAL) ENCLOSURE PANEL TO TENANT DEMISING WALL AND EXISTING STOREFRONT

FLOOR PLAN PLAN KEY NOTES

- ROOM NAME** → ROOM NAME
ROOM # → ###
SQUARE FEET → SF
- CONTRACTOR TO COORDINATE ALL DISCIPLINES (MEP/FP) PRIOR AND DURING CONSTRUCTION
 - DEMOLISH AND/OR REMOVE ANY EXISTING PARTITIONS, FRAMING, ETC. - REQUIRED TO ALLOW FOR NEW CONSTRUCTION
 - COORD. W/ LANDLORD FOR ANY WORK OUTSIDE OF SCOPE/ TENANT BOUNDARIES
 - STAIR ENCLOSURE (BY LANDLORD) MAINTAIN CONTINUOUS 1-HR FIRE RATING AT FLOOR OPENING PERIMETER (SEE DETAIL)
 - RELOCATED ELEC. PANEL (SEE E-SERIES)
 - PROVIDE MTL PTD GYP ON MTL STUD SOFFIT TO CONCEAL EXISTING STOREFRONT/ENTRY BACING & FRAMING
 - RELOCATED STORM DRAIN PIPING (SEE P-SERIES)
 - POS SYSTEM- COORDINATE WITH OWNER AND ELEC FOR ADDITIONAL INFORMATION
 - COORDINATE ANY WALL MOUNTED EQUIPMENT WITH CERAMIC TILE AND/OR FRP PANELING WALL FINISH
 - PROVIDE PENETRATION THRU EXISTING INSULATED PANEL FOR NEW MECH DUCTWORK- SEALANT ALL AROUND (BOTH SIDES)
 - STAIR ASSEMBLY (BY LANDLORD) TREADS, RISERS, RUNS, STRINGERS, LANDINGS, RAILINGS.

DOOR SCHEDULE

MARK	DOOR	SIZE	FRAME	FIRE	REMARKS
S1-00	EXISTING TO REMAIN	3'-0" x 7'-0"	D02	PT-1	S2 STAIR
S1-01	EXISTING TO REMAIN	3'-0" x 7'-0"	D02	PT-1	S2 STAIR
101	EXISTING TO REMAIN	3'-0" x 7'-0"	D01	PT-1	H1 S1
105	EXISTING TO REMAIN	3'-0" x 7'-0"	D01	PT-1	H3 S2
106	EXISTING TO REMAIN	2'-0" x 7'-0"	D01	PT-1	H3 S2

REMARKS:
1. xxxxxxxx
GENERAL NOTES:
1. xxxxxxxx

ROOM FINISH SCHEDULE

MARK	ROOM	FLOOR	WALLS	CEILING	COMMENTS
001	CELLAR	FL-04	WB-02	PT-1	
S1-00	STAIR	FL-04	WB-01	PT-1	
101	FRONT	FL-01 / 02	WB-01	PT-2	
102	SERVICE	FL-01 / 02	WB-01	PT-2	
103	KITCHEN	FL-03	WB-01	PT-2	
104	PASSAGE	FL-03	WB-01	PT-1, W-02	
105	TOILET	FL-01 / 02	WB-01	PT-1, W01	
106	CLOSET	FL-01 / 02	WB-01	PT-1	
S1-01	STAIR	FL-04	WB-01	PT-1	

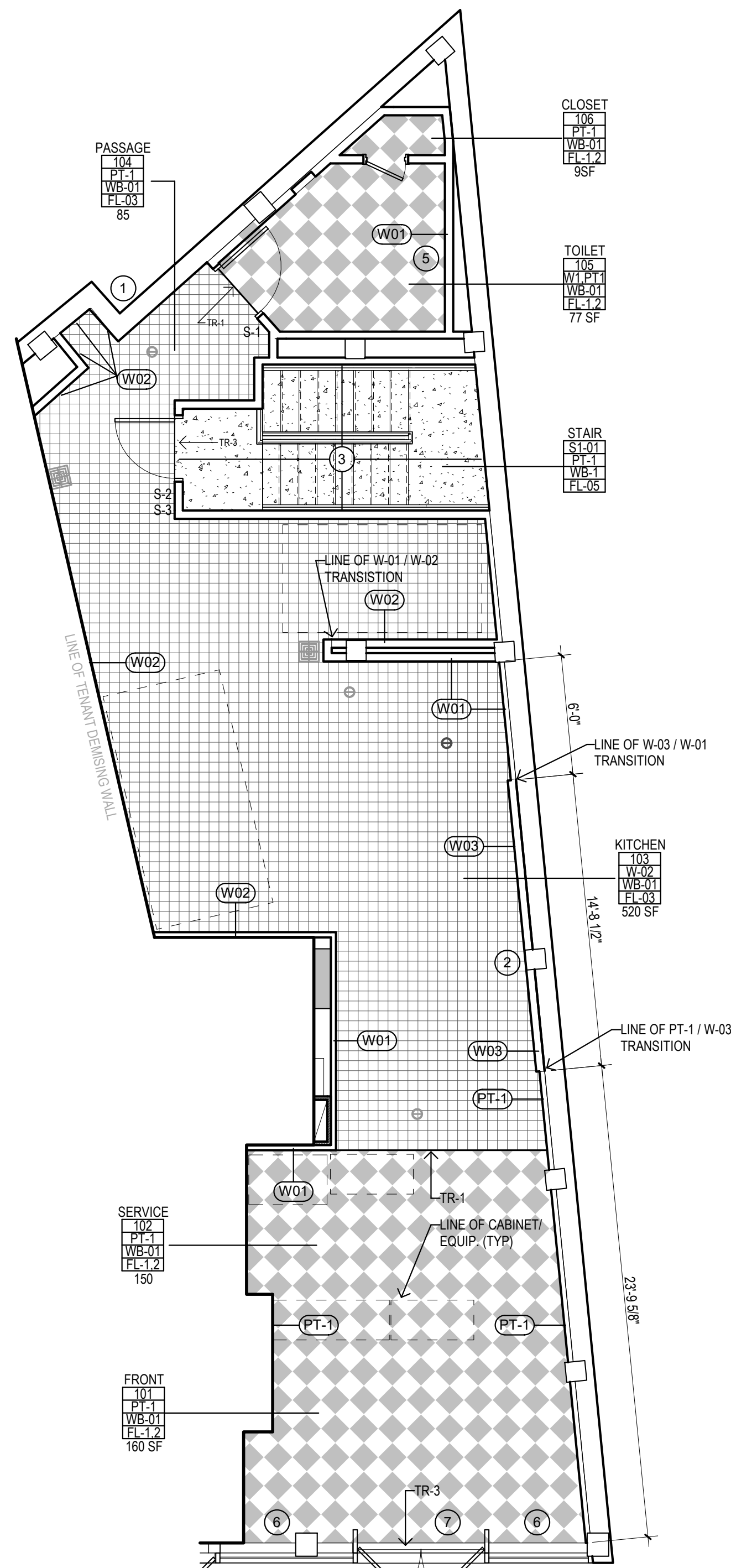
EQUIPMENT SCHEDULE

MARK	QTY	MANUFACTURER	MODEL #	DESCRIPTION	REMARKS
E-1	1	BOBRICK	B-165 SERIES	FIXED MIRROR	
E-2	3	BOBRICK	B26617	SOAP DISPENSER	
E-3	1	BOBRICK	B-43944	PAPER TOWEL DISPENSER / WASTE RECEPTACLE COMBO	
E-4	2	BOBRICK	B-9262	PAPER TOWEL DISPENSER	
E-5	1	BOBRICK	B-9890	TOILET TISSUE DISPENSER	
E-6	3	BOBRICK	B-165 SERIES	PIPE GUARDS	
E-7	1	BOBRICK	B-6806	ADA GRAB BAR(S): A-36" REAR WALL, B-42" SIDE WALL, C-18" VERTICAL	
E-8	2	BOBRICK	B-682	DOOR HOOK(S)	
E-9	4	MOFFAT	E3SD6-26	CONVECTION OVEN ELECTRIC (DOUBLE STACK)	
E-10	3	EQUIPEX	GLS-5000F	ADVENTYS INDUCTION RANGE COUNTERTOP ELECTRIC	
E-11	2	DUKER APPLIANCE	DBB48-H2	BACK BAR CABINET REFRIGERATOR - WITH STAINLESS STL COUNTER TOP	
E-12	1	DUKER APPLIANCE	DBB72-H3	BACK BAR CABINET REFRIGERATOR - WITH STAINLESS STL COUNTER TOP	
E-13	2	ADVANCE TABCO	7-PS-66	HAND SINK	
E-14	1	ADVANCE TABCO	FC-3-1620-18RL-X	THREE COMPARTMENT SINK	
E-15	1	ATS MFG	MET SEM-201610	MOP SINK	
E-16	1	AMERIKOOLER	CUSTOM	WALK IN COOLER 6X12 SIZE TO BE CONFIRMED	
E-17	1	AMERIKOOLER	CUSTOM	WALK IN FREEZER 6'-0" X 12'-0" SIZE TO BE CONFIRMED	
E-18	1	DUKER APPLIANCE	DSM-41R	REFRIGERATED MERCHANDISER	
E-19	5	FOCUS FOOD SERV.	FF1460G	WIRE SHELVING	
E-20	12	WINCO	ALRK-30BK	UNIVERSAL SHEET PAN RACK (MOBILE)	
E-21	1	ADVANCE TABCO	DUN-2036-8	DUNNAGE RACK-36"Wx20"Dx8"H	
E-22	4	ADVANCE TABCO	DUN-2048-8	DUNNAGE RACK-48"Wx20"Dx8"H	
E-23	1	NEW AGE	1313	MOBILE WORK TOP PNA RACK	
E-24	1	ADVANCE TABCO	TSFLAG-306-X	WORK TABLE-72"Wx30"D	
E-25	1	ADVANCE TABCO	TSFLAG-305-X	WORK TABLE-60"Wx30"D	

GENERAL NOTES:
1. PROVIDE BLOCKING FOR ALL WALL MOUNTED FIXTURES, EQUIPMENT ETC. AS REQ'D
2. COORDINATE WITH ARCH & OWNER FOR ALL FINAL LOCATIONS

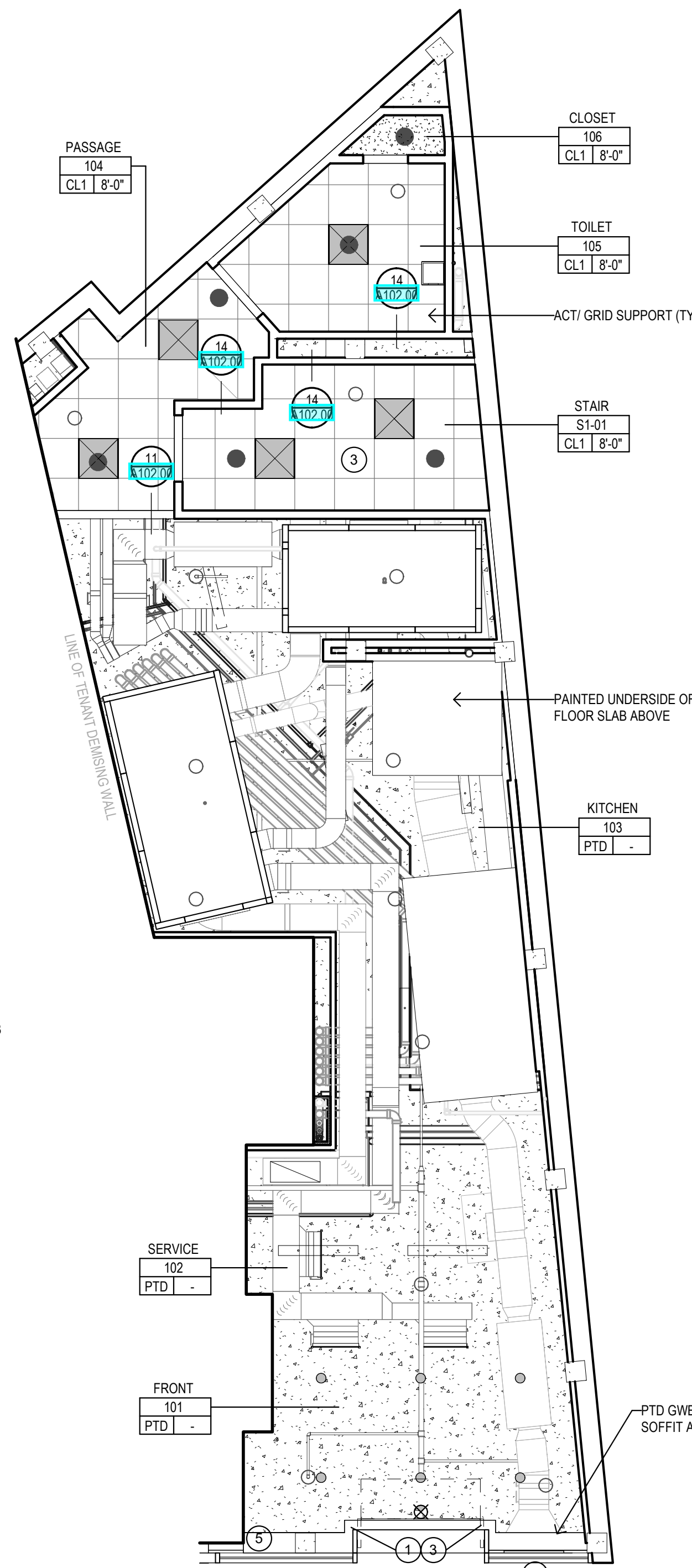
FINISH LEGEND

FLOORING	CEILING
FL-01 PORCELAIN TILE MFG: DALTILE STYLE: PURE SIZE: 12"x12" COLOR: FROST WHITE-MATTE #P202 INSTALL: CHECKERBOARD-ROTUN GROUT: MATCH BLACK TILE PROVIDE TILE SEALER	CW-01 CERAMIC TILE MFG: DALTILE STYLE: 7"FP STYLE: RETROSPACE REMIX FINISH: GLOSSY GROUT: WHITE
FL-02 PORCELAIN TILE MFG: DALTILE STYLE: PURE SIZE: 12"x12" COLOR: BLACK-MATTE #P201 INSTALL: CHECKERBOARD-ROTUN GROUT: MATCH BLACK TILE PROVIDE TILE SEALER	CL-01 ACOUSTICAL CEILING TILES MFG: USG STYLE: RS1368 FRST SIZE: 2'x2' COLOR: #205 FLAT BLACK EDGE: SHADOWLINE BEVEL GRID: 15"HP DIXDAL GRID GRID COLOR: #209 FLAT BLACK
FL-03 QUARRY TILE (KITCHEN) MFG: DALTILE STYLE: QUARRY TILE SIZE: 12"x12" COLOR: RED GLAZE SQUARE #040 INSTALLATION: 90 GROUT: BLACK	TR-1 TILE TO TILE (FL-01/FL-02) MFG: SCHLUTER PROFILE: FINISH
INTERIOR WALL FINISH PT-1 GIB (WALLS) MFG: BENJAMIN MOORE STYLE: PRO-SPEC COLOR: WHITE FINISH: EGGSHELL	TR-2 TILE TO TILE (FL-01/FL-02) MFG: SCHLUTER PROFILE: FINISH
COUNTERTOP WB-1 WALL BASE (RUBBER) MFG: BOFFE SIZE: 4" (NO TIE) COLOR: BLACK #100	TR-3 ALUMINUM THRESHOLD (ENTRY DOOR) MFG: PROFILE FINISH: FINISH



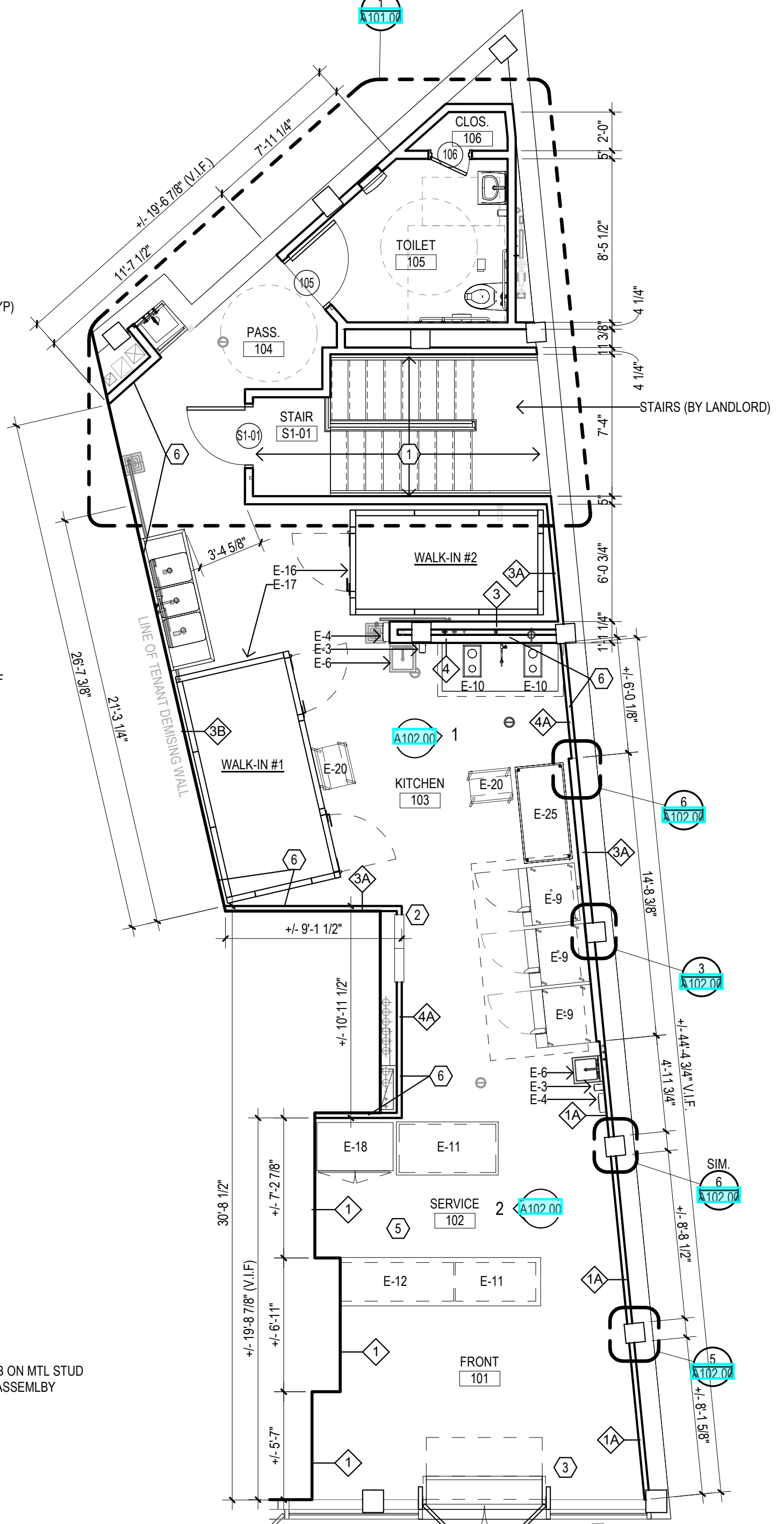
3 FIRST FLOOR FINISH PLAN

3/16" = 1'-0"



2 FIRST FLOOR RCP

3/16" = 1'-0"



1 FIRST FLOOR PLAN

3/16" = 1'-0"



**ARCHITECTS
ENGINEERS
INTERIORS**

SILVER PETRUCELLI & ASSOC.
3190 WHITNEY AVENUE, HAMDEN CT 06518
311 STATE STREET NEW LONDON, CT 06320
P. 203 230 9007 silverpetrucelli.com

SILVER PETRUCELLI & ASSOC.
3190 WHITNEY AVENUE, HAMDEN CT 06518
311 STATE STREET NEW LONDON, CT 06320
P. 203 230 9007 silverpetrucelli.com



Project Title:
**TENANT FIT-OUT:
POPUP BAGELS**
661 DRIGGS AVENUE
BROOKLYN, NY 11211

Revision: Description: Date: Revised By:

Date: 8/20/24 Scale: As indicated
Drawn By: JDN Project Number: 24-119

Sheet Title:
**1ST FLOOR PLAN, RCP,
FINISH PLAN & SCHEDULES**

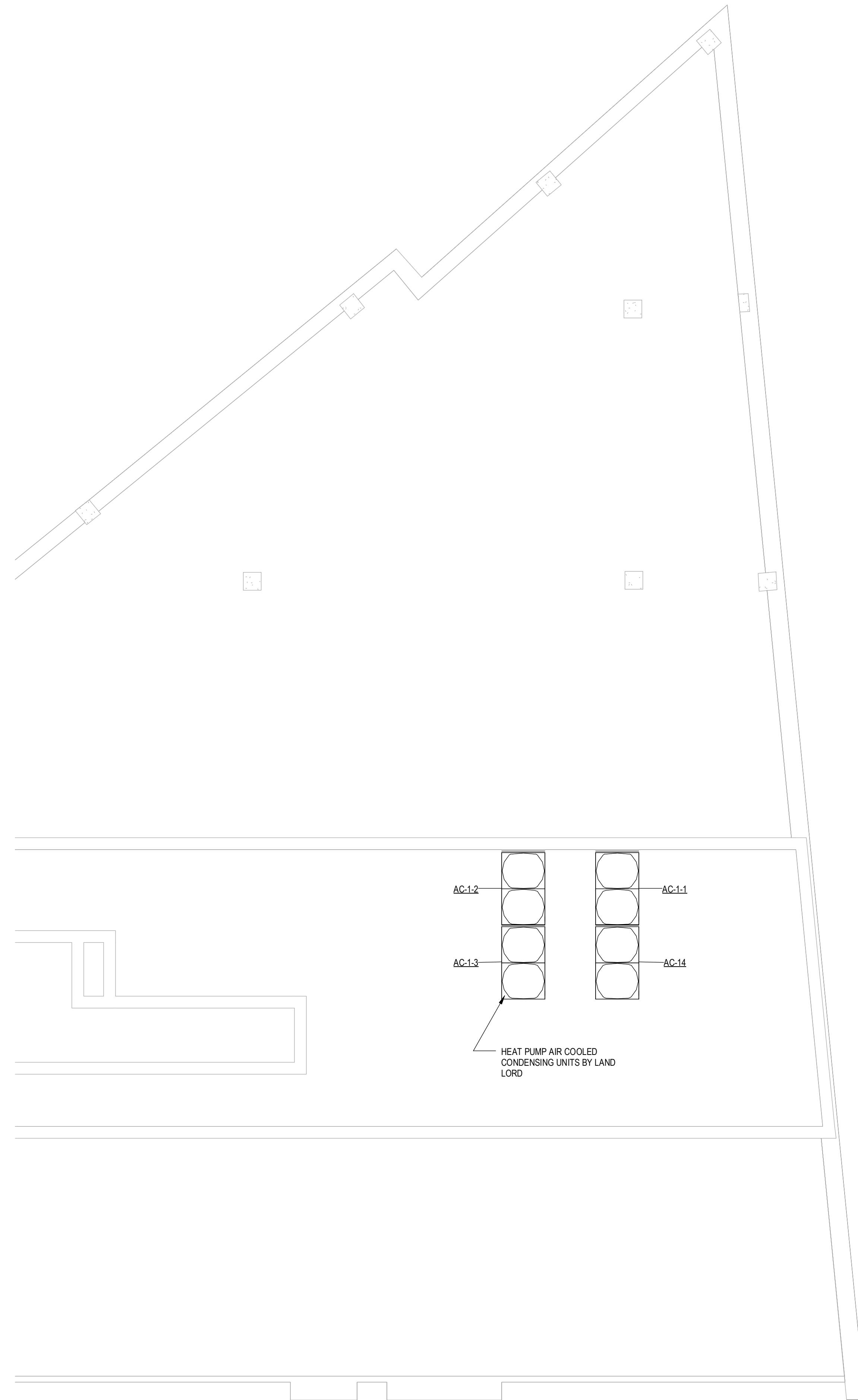
Sheet Number:
A100.00



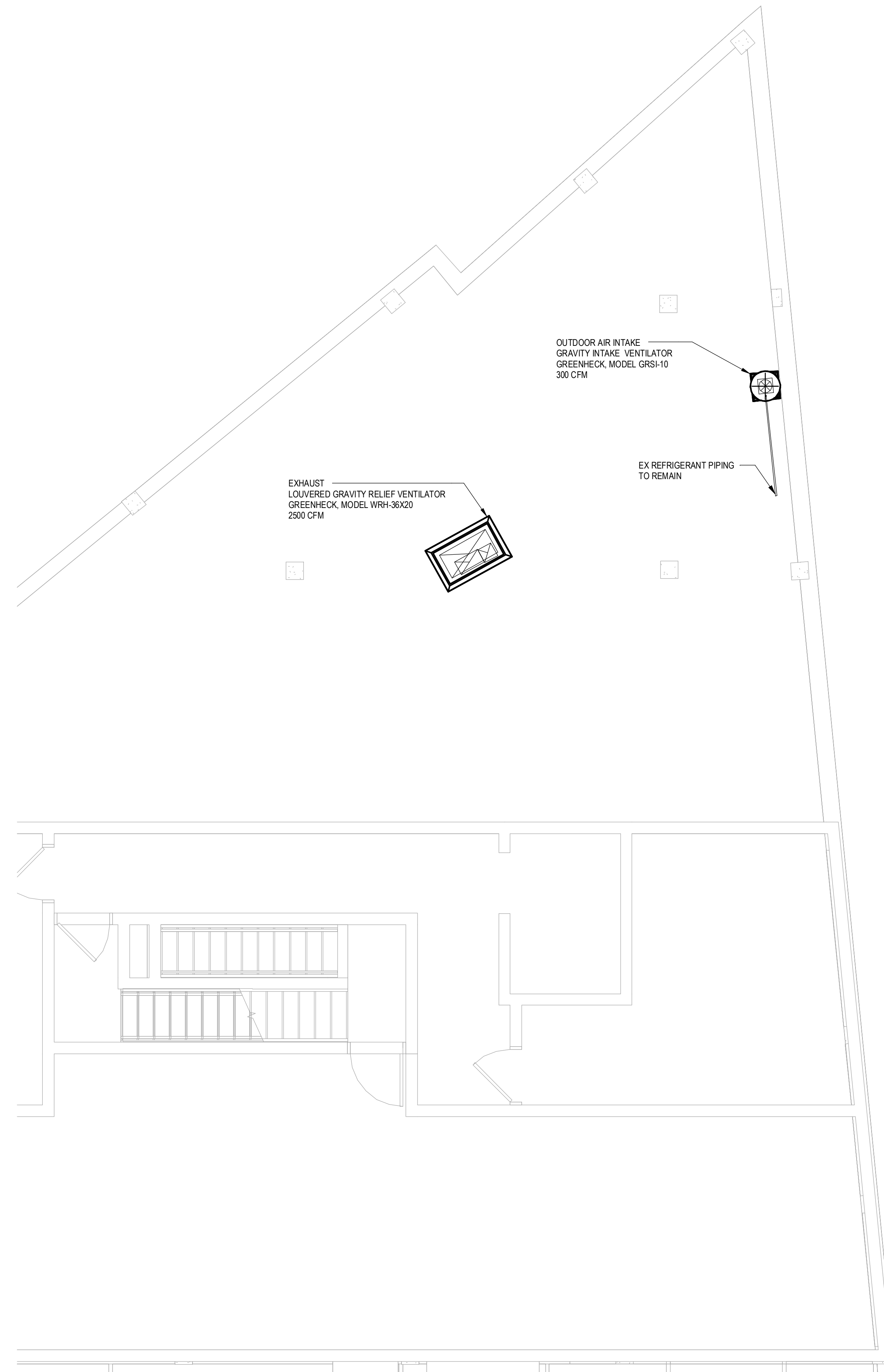
ARCHITECTS
ENGINEERS
INTERIORS

ARCHITECT:
SILVER PETRUCELLI & ASSOC.
3190 WHITNEY AVENUE, HAMDEN CT 06518
311 STATE STREET NEW LONDON, CT 06320
P. 203 230 9007 silverpetrucci.com

ME/P/SP:
SILVER PETRUCELLI & ASSOC.
3190 WHITNEY AVENUE, HAMDEN CT 06518
311 STATE STREET NEW LONDON, CT 06320
P. 203 230 9007 silverpetrucci.com



2 HIGH ROOF PLAN
1/4" = 1'-0"



1 LOW ROOF PLAN
1/4" = 1'-0"

SEAL & S



Project Title:
**TENANT FIT-OUT:
POPUK BAGELS**
661 DRIGGS AVENUE
BROOKLYN, NY 11211

Revision: Description: Date: Revised By:

Date: 8/20/24 Scale: 1/4" = 1'-0"
Drawn By: MPB Project Number: 24-119

Sheet Title:
MECHANICAL ROOF PLANS

Sheet Number:
M-102.00



ARCHITECT:
SILVER PETRUCELLI & ASSOC.
 3190 WHITNEY AVENUE, HAMDEN CT 06518
 311 STATE STREET NEW LONDON, CT 06320
 P. 203 230 9007 silverpetrucelli.com

ME/P/SP:
SILVER PETRUCELLI & ASSOC.
 3190 WHITNEY AVENUE, HAMDEN CT 06518
 311 STATE STREET NEW LONDON, CT 06320
 P. 203 230 9007 silverpetrucelli.com

DUCT MATERIAL SCHEDULE			
APPLICATION	SUPPLY	RETURN	EXHAUST
TYPICAL (UNLESS OTHERWISE SPECIFIED)	G90 GALVANIZED STEEL	G90 GALVANIZED STEEL	G90 GALVANIZED STEEL
10 FT UPSTREAM AND DOWNSTREAM OF DUCT MOUNTED HUMIDIFIER DISPERSION TUBE OR DISPERSION GRID.	3003 H-14 ALUMINUM	3003 H-14 ALUMINUM	3003 H-14 ALUMINUM
OUTDOOR AIR INTAKE PLENUM	3003 H-14 ALUMINUM	--	--
OUTDOOR AIR	3003 H-14 ALUMINUM	--	--
TYPE I COMMERCIAL KITCHEN HOOD EXHAUST DUCT & PLENUM	--	--	10 GAUGE ALL WELDED EXPOSED: 304 STAINLESS STEEL No. 4 FINISH CONCEALED: CARBON STEEL
EXPOSED AND CONCEALED EXHAUST DUCTWORK AND PLENUMS SERVING TOILET ROOMS, SHOWER ROOMS, CLOTHES DRYER, ALL DUCTWORK RUNNING THROUGH, OVER OR SERVING SHOWER ROOMS, HATCHERIES, AND ALL SPACES WITH OPEN TANKS.	3003 H-14 ALUMINUM	3003 H-14 ALUMINUM	3003 H-14 ALUMINUM
EXPOSED DUCTWORK LOCATED IN AND SERVING AIR-CONDITIONED SPACES TO BE FIELD PAINTED OTHER THAN DUCTWORK LOCATED IN SPACES REQUIRED TO BE ALUMINUM.	A60 GALVANNEALED STEEL	A60 GALVANNEALED STEEL	A60 GALVANNEALED STEEL
EXPOSED DUCTWORK LOCATED IN AND SERVING CONDITIONED SPACES OTHER THAN DUCTWORK LOCATED IN SPACES REQUIRED TO BE ALUMINUM.	G90 GALVANIZED STEEL	G90 GALVANIZED STEEL	G90 GALVANIZED STEEL
EXPOSED DUCTWORK LOCATED IN AND SERVING CONDITIONED SPACES OTHER THAN DUCTWORK LOCATED IN SPACES REQUIRED TO BE ALUMINUM OR TO BE FIELD PAINTED.	G90 GALVANIZED STEEL	G90 GALVANIZED STEEL	G90 GALVANIZED STEEL
DISHWASHER HOOD	--	--	304 STAINLESS STEEL EXPOSED: No. 4 FINISH CONCEALED: No. 2D FINISH

1. DUCT CONSTRUCTION SHALL MEET SMACNA METAL & FLEXIBLE 2005 3RD EDITION STANDARDS.

VIBRATION-CONTROL AND SEISMIC-RESTRAINT DEVICE SCHEDULE				
EQUIPMENT	BASE	ISOLATOR*	SEISMIC RESTRAINT	DEFLECTION
CONDENSING UNITS (GRADE AND ROOF MOUNTED)	24" HIGH EQUIPMENT RAILS	NP	LAG BOLT TO RAIL, RAIL TO BE ATTACHED TO STRUCTURE.	0.2"
SUSPENDED CABINET UNIT HEATERS	--	HN	CABLE RESTRAINTS	0.25"
VAV BOXES LESS THEN 50BLBS IN WEIGHT	--	--	CABLE RESTRAINTS	--
SUSPENDED INLINE FANS	--	HSN	CABLE RESTRAINTS	1.5"
INDOOR CEILING MOUNTED AIR HANDLING UNITS	--	HSN	CABLE RESTRAINTS	1.2"
CEILING MOUNTED FAN COIL UNITS	--	HSN	CABLE RESTRAINTS	1.2"
FAN POWERED VAV UNITS	--	HN	CABLE RESTRAINTS	0.25"
ROOF MOUNTED FANS	SRC	--	--	--
PIPING WITHIN 50FT OF CONNECTION TO ANY PIECE OF EQUIPMENT WITH A MOTOR	--	HSN	--	1.2"
DUCTWORK IN MECH. ROOMS OR WITHIN 50FT OF CONNECTED VIBRATION-ISOLATED EQUIPMENT	--	HN	--	0.25"

REMARKS:
 (NP) - NEOPRENE PAD, (DNP) - DOUBLE NEOPRENE PAD, (FNC) - FLOOR NEOPRENE RESTRAINED MOUNTS, (FSN) - FLOOR SPRING AND NEOPRENE SPRING ISOLATOR, (FSNTL) - FLOOR SPRING AND NEOPRENE TRAVEL LIMITED RESTRAINED SPRING ISOLATOR, (HN) - NEOPRENE HANGER, (HSN) - SPRING AND NEOPRENE HANGER, (RC2) - ROOF CURB, TYPE 2, (BSF) - BASE, STEEL FRAME, (BIB) - BASE, INERTIA BASE, (FPC) - FLEXIBLE PIPE CONNECTIONS, (SRC) - SEISMIC ROOF CURB.

* IN ADDITION TO ANY INTERNAL VIBRATION ISOLATION.
 ** SYSTEM SHALL BE DESIGNED TO BE 90% EFFICIENT.

DUCT INSULATION SCHEDULE			
SYSTEM	INSULATION TYPE	MINIMUM INSTALLED INSULATION VALURS	NOMINAL DENSITY
INDOOR DUCT/PLENUM CONCEALED SA, RA, OA: OTHER THAN PRE-MANUFACTURED LINEAR SUPPLY AND RETURN GRILLE PLENUMS.	MINERAL FIBER BLANKET	SEE NOTE 1	SEE NOTE 1
	MINERAL FIBER BOARD WITH REFLECTIVE VAPOR BARRIER	SEE NOTE 1	SEE NOTE 1
INDOOR DUCT/PLENUM EXPOSED SA AND RA: LOCATED IN MECHANICAL ROOMS, OTHER NON-OCCUPIED SPACES, NON-AIR CONDITIONED SPACES, PASSING THROUGH AIR CONDITIONED SPACES.	MINERAL FIBER BOARD WITH REFLECTIVE VAPOR BARRIER	SEE NOTE 1	SEE NOTE 1
INDOOR DUCT/PLENUM EXPOSED OA: ALL SPACES OTHER THAN ATTICS AND CRAWL SPACES	MINERAL FIBER BOARD WITH REFLECTIVE VAPOR BARRIER	SEE NOTE 1	SEE NOTE 1
INDOOR DUCT/PLENUM EXPOSED SA, RA, OA, EA: ALL ATTIC SPACES AND CRAWL SPACES	MINERAL FIBER BOARD WITH REFLECTIVE VAPOR BARRIER	SEE NOTE 1	SEE NOTE 1
INDOOR DUCT/PLENUM EXPOSED SA AND RA: LOCATED WITHIN THE AIR-CONDITIONED SPACE IT SERVES.	NONE, UNLESS OTHERWISE NOTED ON THE DRAWINGS OR IN THE SPECIFICATION.	SEE NOTE 1	SEE NOTE 1
DUCT LINING DUCTS INSTALLED OUTDOORS. ALL ATTIC SPACES AND CRAWL SPACES SA AND RA, SA AND RA DUCTWORK WHERE INDICATED ON THE DRAWINGS AND IN THE SPECIFICATION, 15 FT DOWNSTREAM OF SUPPLY FANS, RETURN FANS AND 10 FT DOWNSTREAM OF TERMINAL BOXES WHETHER INDICATED OR NOT.	FIBROUS-GLASS DUCT LINER WITH CLEANABLE COMPOSITE COATING ON AIRSTREAM SIDE. METAL NOSING SHALL BE FURNISHED ON ALL LEADING AND LEAVING EDGES. (REFER TO NOTES #2, #4)	SEE NOTE 1	SEE NOTE 1
DUCT LINING DUCTS INSTALLED IN INDOOR SPACES: EXPOSED AND CONCEALED SA OR RA DUCTWORK WHERE INDICATED ON THE DRAWINGS AND IN THE SPECIFICATION, 15 FT DOWNSTREAM OF SUPPLY FANS, RETURN FANS AND 10 FT DOWNSTREAM OF TERMINAL BOXES WHETHER INDICATED OR NOT.	FIBROUS-GLASS DUCT LINER WITH CLEANABLE COMPOSITE COATING ON AIRSTREAM SIDE. METAL NOSING SHALL BE FURNISHED ON ALL LEADING AND LEAVING EDGES. (REFER TO NOTES #2, #4)	SEE NOTE 1	SEE NOTE 1
ABOVEGROUND, OUTDOOR DUCT/PLENUM CONCEALED OR EXPOSED SA, RA, AND OA.	MINERAL FIBER BOARD (REFER TO NOTE #1)	SEE NOTE 1	SEE NOTE 1
EXHAUST AIR SYSTEMS DRYER, LABORATORY FUME HOOD, KILN AND ALL OTHER EXHAUST SYSTEMS WHERE FIRE, SMOKE AND FIRE/SMOKE DAMPERS ARE NOT PERMITTED TO BE INSTALLED WITHIN THE DUCTWORK.	FIRE-RATED BLANKET OR BOARD (REFER TO NOTE #5)	SEE NOTE 1	SEE NOTE 1
CONCEALED TYPE I COMMERCIAL KITCHEN HOOD EXHAUST DUCT & PLENUM.	FIRE-RATED BLANKET OR BOARD	SEE NOTE 1	SEE NOTE 1

NOTES:
 1. DUCT INSULATION SHALL BE IN COMPLIANCE WITH APPLICABLE STANDARDS AND CODES, REFERENCE THE 2022 NEW YORK CITY MECHANICAL CODE, NEW YORK CITY ENERGY CONSERVATION CODE AND/OR ASHRAE 90.1-2016.
 2. FOR OUTDOOR DUCTWORK PROVIDE A PRE-MANUFACTURED SELF ADHERING PRODUCT WITH AN UV RESISTANT, STUCCO EMBOSSED FACING. WATER VAPOR TRANSMISSION OF THE INSTALLED PRODUCT SHALL BE 020 PERMS OR LESS. PRODUCT SHALL BE SUITABLE FOR CONTINUOUS USE IN LOW TEMPERATURES OF -10°F. MANUFACTURERS SHALL BE SIMILAR TO FLEX-CLAD 400, MFM BUILDING PRODUCTS CORP. OR ALUMAGUARD 60, POLYGUARD PRODUCTS, INC.
 3. DUCT LINING SHALL NOT BE INSTALLED WITHIN 10 FT UPSTREAM OR DOWNSTREAM OF A DUCT MOUNTED HUMIDIFIER DISPERSION TUBE OR DISPERSION GRID.
 4. INSULATION TYPES INDICATED IN THE SCHEDULE SHALL USED UNLESS OTHERWISE INDICATED ON THE PLANS OR SPECIFICATIONS.
 5. CLOSED CELL, FIBER FREE, ANTI-MICROBIAL COATED, LOW VOC CERTIFIED, MOISTURE AND MOLD RESISTANT DUCT LINING SHALL BE PROVIDED IN DUCTWORK AND EQUIPMENT WITHIN HOSPITAL AND HEALTHCARE FACILITIES AND ROOMS CLASSIFIED AS MOIST OR WET ENVIRONMENTS WHERE THIS SCHEDULE, DRAWINGS AND SPECIFICATION INDICATE DUCT LINING.
 6. DUCTWORK SHALL BE FIRE WRAPPED FROM THE APPLIANCE CONNECTION TO THE TERMINATION POINT.

ABBREVIATIONS:
 OA = OUTDOOR AIR DUCTWORK
 SA = SUPPLY AIR DUCTWORK
 RA = RETURN AIR DUCTWORK
 EA = EXHAUST AIR DUCTWORK

FAN SCHEDULE														
MARK	LOCATION	SYSTEM SERVED	TYPE	CFM	SP	MAX BHP	FAN RPM	TIP SPEED	SOUND SONES	ELECTRICAL DATA			MAKE/ MODEL	REMARKS
										HP	VOLTS	Ø		
EF-1	TOILET	EXHAUST	CEILING	75	.5	.01	771	-	3	0.01	115	1	15	GREENHECK SP-LP0511-1 DIRECT DRIVE
EF-2	BASEMENT	EXHAUST	INLINE	100	.5	.065	825	-	1.3	56.8 WATTS	115	1	15	GREENHECK CSP-A200 DIRECT DRIVE

REMARKS:
 1. ALL FANS SHALL BE BALANCED TO AIRFLOW QUANTITY INDICATED ON PLANS AT INLETS AND OUTLETS.
 2. PROVIDE SPEED CONTROLLERS.
 3. PROVIDE BACKDRAFT DAMPERS.
 4. PROVIDE VIBRATION ISOLATION
 5. PROVIDE MOTOR COVERS/BELT GUARDS.

DOOR AIR CURTAIN SCHEDULE										
MARK	LOCATION	NOZZLE LENGTH	CFM	VEL. (FPM)	FAN MOTOR DATA			MTG. HT. (A.F.F.)	MAKE/ MODEL	REMARKS
					HP	VOLT	Ø			
DAC-1	FRONT DOOR	6'-0"	2080	1387	(2)@1/2	208	3	VERIFY IN FIELD	MARS STD272-2E6312	HEATED, 12 KW

REMARKS:
 1. PROVIDE WITH FACTORY DISCONNECT, MOUNTING BRACKETS, FILTERS.

REGISTERS, GRILLES & DIFFUSERS									
SYM	SERVICE	TYPE	MAKE	MODEL	MATERIAL FINISH	NECK SIZE	FACE SIZE	CFM RANGE	ACCESSORIES
(A)	SUPPLY	CD	TITUS	272 (FL / FS)	BY ARCH	27x8	--	0-675	--
(B)	RETURN	TR	TITUS	23R	BY ARCH	14x24	--	0-535	--
(C)	SUPPLY	CD	TITUS	TDC	BY ARCH	6"Ø	24x24	0-100	--
						8"Ø	24x24	101-220	--
						10"Ø	24x24	221-375	--
						12"Ø	24x24	376-475	--
						14"Ø	24x24	476-650	--
						16"Ø	24x24	651-850	--
(D)	RETURN	CG	TITUS	355 RL	BY ARCH	22x22	24x24	0-2000	--

VENTILATION INDEX BASED ON MC TABLE 403.3							
LOCATION	AREA (SFT)	OCCUPANT LOAD (PERSONS)	PEOPLE OUTDOOR AIR (CFM/PERSONS)	AREA OUTDOOR AIR (CFM/SFT)	REQUIRED OUTDOOR AIR (CFM)	EXHAUST AIRFLOW (CFM/SFT)	EXHAUST AIRFLOW (CFM) TX/KX
ACCESS STORAGE	773	6	--	0.06	0.06 x 773 = 46	--	100 / 0
PASS	80	0	--	0.06	0.06 x 80 = 4.8	--	--
KITCHEN	518	5	--	0.18	0.18 x 518 = 93	--	0 / 2,325
SERVICE	149	1	--	0.18	0.18 x 149 = 27	--	--
FRONT	162	5	--	0.06	0.06 x 162 = 10	--	--
TOILET	77	0	--	--	--	--	100 / 0



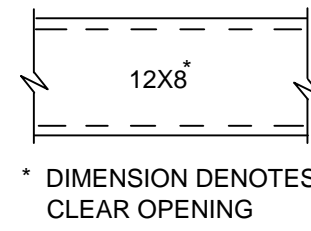
Project Title:
**TENANT FIT-OUT:
 POPUP BAGELS**
 661 DRIGGS AVENUE
 BROOKLYN, NY 11211

Revision: Description: Date: Revised By:

Date: 8/20/24 Scale: NONE
 Drawn By: MPB Project Number: 24-119

Sheet Title:
**MECHANICAL SCHEDULES
 SHEET 1**

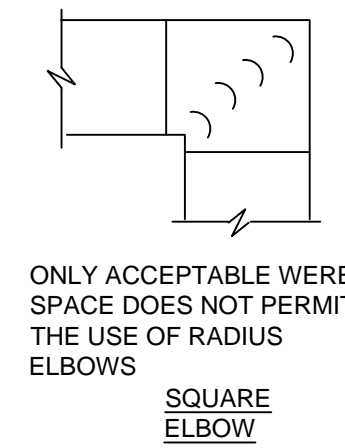
Sheet Number:
M-103.00



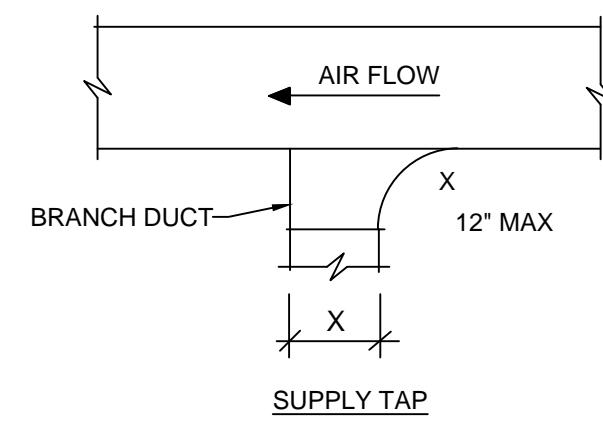
ACOUSTICALLY LINED DUCT

NOTE:

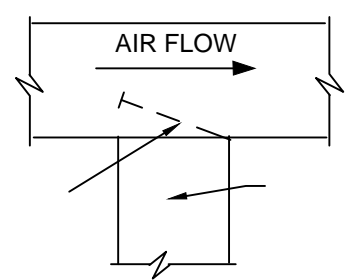
SPECIFICATIONS EXCEED SMACNA STANDARDS IN SOME INSTANCES. SMACNA SHALL BE CONSIDERED THE MINIMUM STANDARD UNLESS OTHERWISE NOTED ON THE DRAWINGS, DETAILS OR IN THE SPECIFICATIONS.



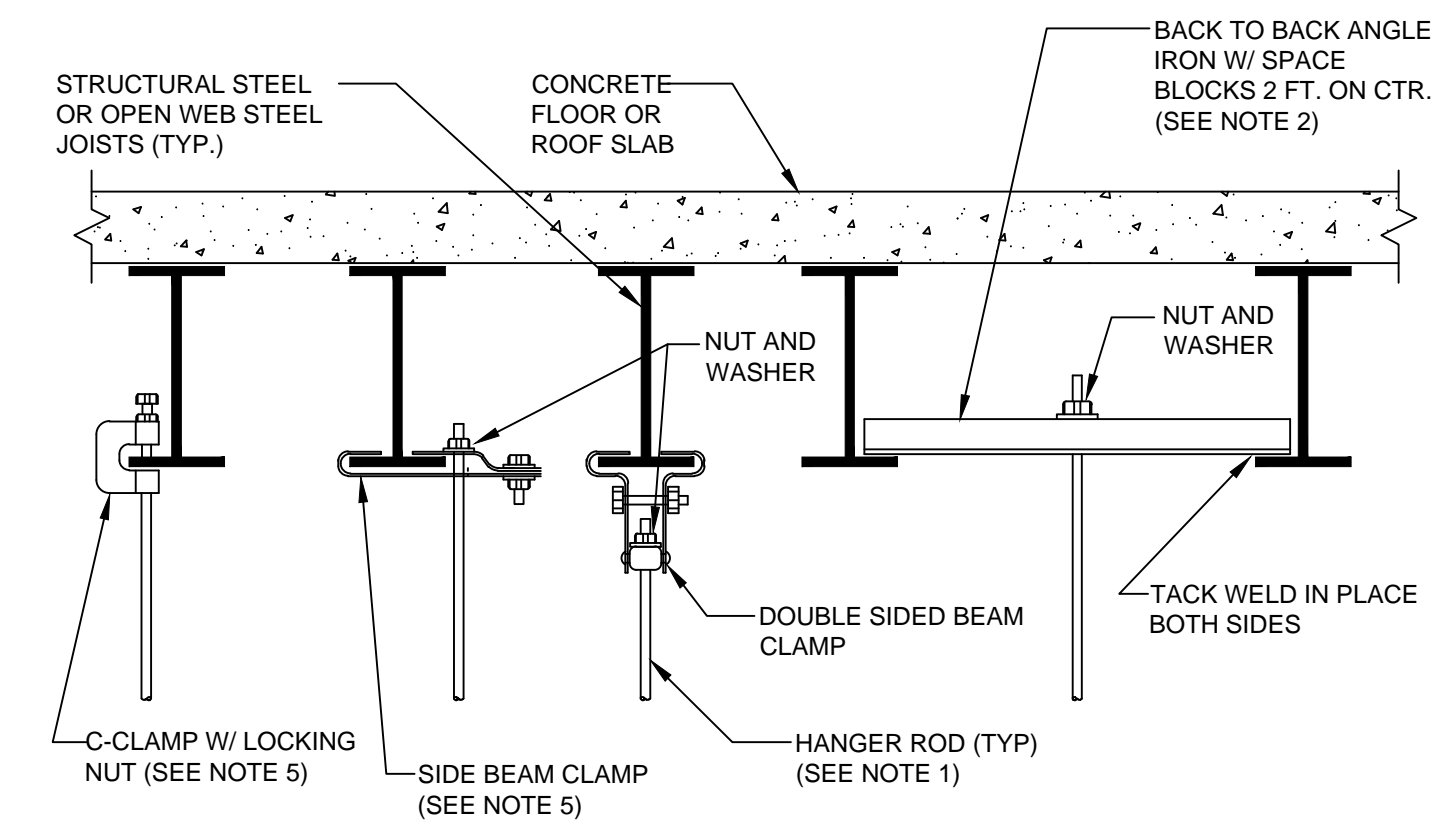
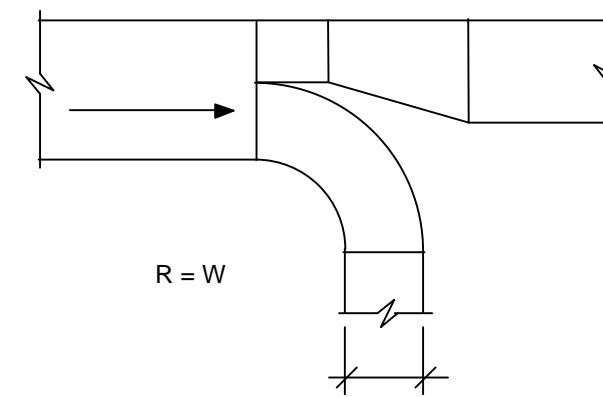
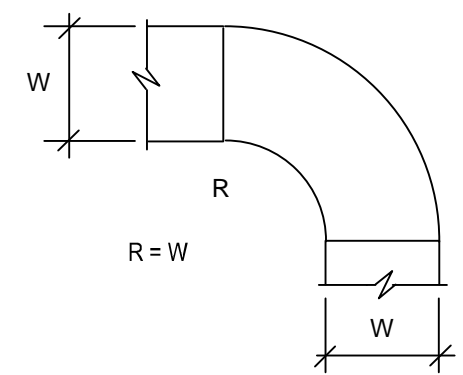
SQUARE ELBOW



SUPPLY TAP



TAKE-OFF TO EXPOSED SIDEWALL REGISTER



NOTES:

- REFER TO SPECIFICATIONS FOR PIPE HANGER ROD SIZE. FOR CEILING SUSPENDED EQUIPMENT PROVIDE MIN. 3/8" DIA. HANGER ROD (REFER TO MANUFACTURERS INSTALLATION INSTRUCTIONS).
- FOR PIPES UNDER 2" USE A SINGLE 1-1/2"x1-1/2"x1/4" ANGLE IRON WITH C-CLAMP. FOR PIPES 2-1/2" AND LARGER USE 3"x3"x1/4" ANGLE IRON BACK TO BACK AS SHOWN.
- REFER TO "TYPICAL METHOD OF SECURING HANGER RODS TO CONCRETE DECK DETAIL" FOR ATTACHING HANGER RODS TO CONCRETE DECK.
- REPAIR OF FIREPROOFING IN ORDER TO FACILITATE THE INSTALLATION OF HANGER RODS IN EXISTING CONSTRUCTION SHALL BE BY THE G.C.
- USE OF C-CLAMPS AND SIDE BEAM CLAMPS IS LIMITED TO PIPING 2-1/2" AND UNDER.

DUCT CONSTRUCTION DETAIL

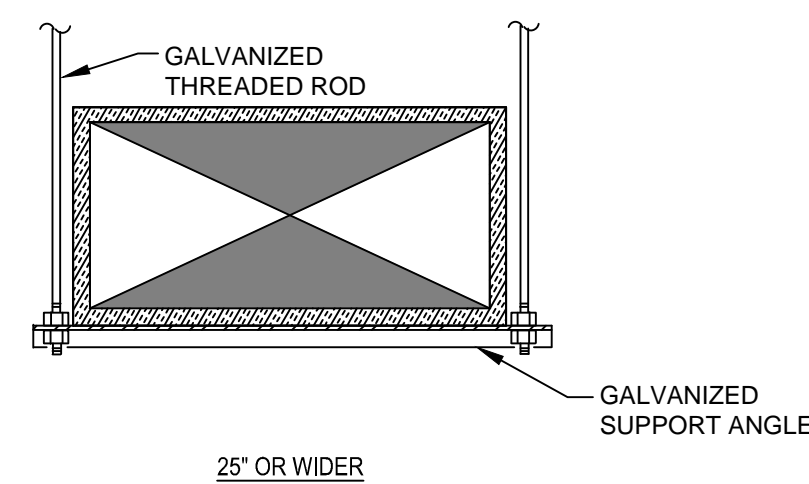
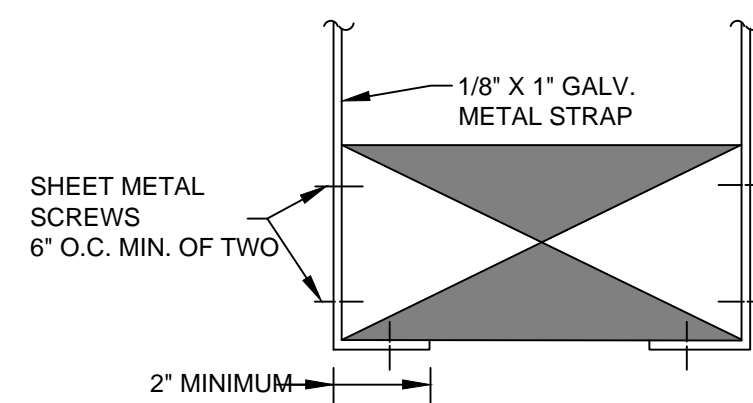
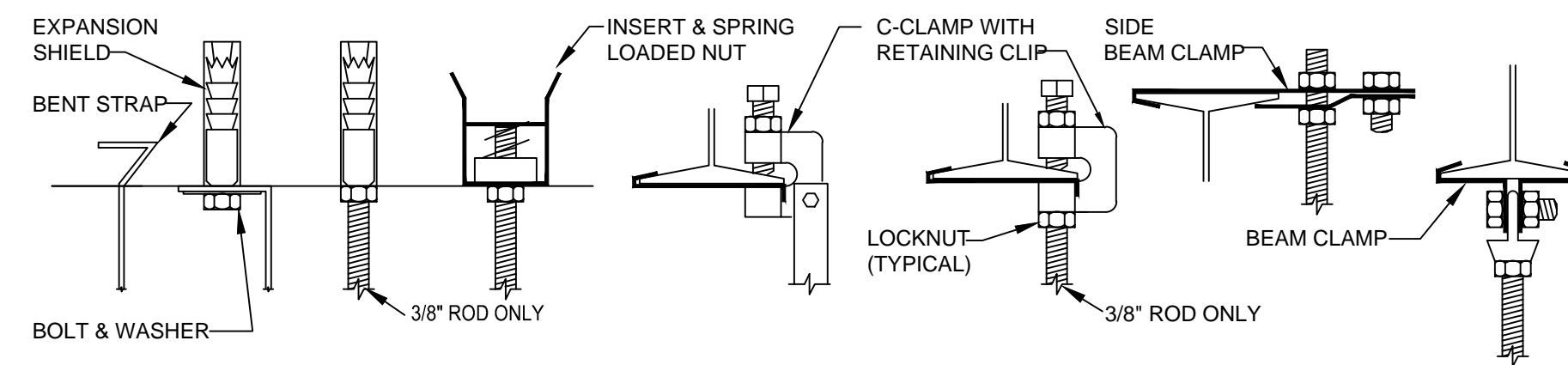
NOT TO SCALE

TYPICAL METHOD OF SECURING HANGER RODS TO STRUCTURAL STEEL DETAIL

NOT TO SCALE

DUCT WIDTH	SUPPORT ANGLE OR EQUIV. CHANNEL	ROD DIA.	MAXIMUM SPACING	MAXIMUM AREA *
25" TO 30"	1 1/2" X 1 1/2" X 1/8"	3/8"	8'-0" O.C.	4 SQ. FT.
31" TO 42"	1 1/2" X 1 1/2" X 1/8"	3/8"	6'-0" O.C.	10 SQ. FT.
43" TO 60"	1 1/2" X 1 1/2" X 1/8"	1/2"	6'-0" O.C.	10 SQ. FT.
61" TO 84"	2" X 2" X 1/4"	1/2"	4'-0" O.C.	-
85" AND UP	2" X 2" X 1/4"	1/2"	4'-0" O.C.	-

* REDUCE SPACING TO NEXT SMALLER INTERVAL IF DUCT AREA EXCEEDS MAXIMUM

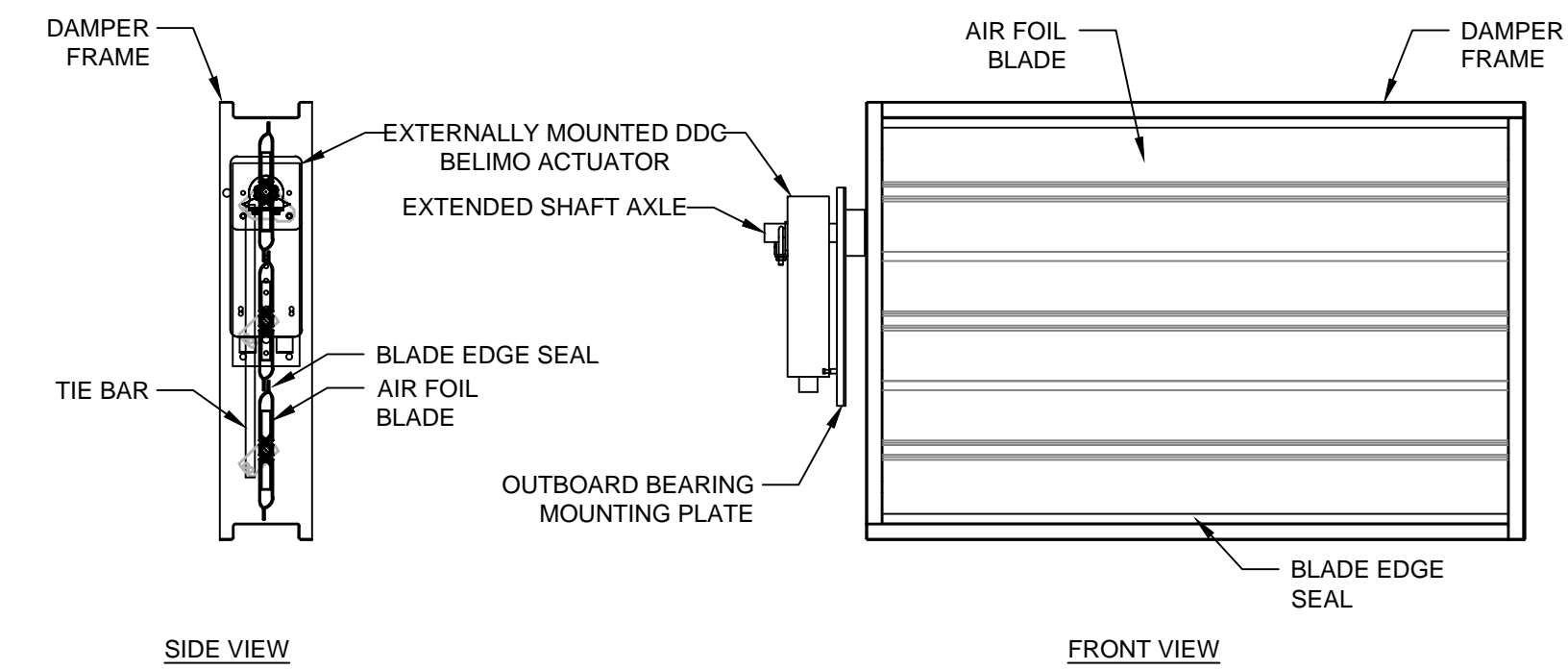


DUCT SUPPORT DETAIL

NOT TO SCALE

DAMPER UNIT WITH EXTERNAL MOUNTED ELECTRONIC ACTUATOR DETAIL

NOT TO SCALE



ARCHITECTS
ENGINEERS
INTERIORS

ARCHITECT:

SILVER PETRUCCELLI & ASSOC.
3190 WHITNEY AVENUE, HAMDEN CT 06518
311 STATE STREET NEW LONDON, CT 06320
P. 203 230 9007 silverpetrucelli.com

ME/P/SP:

SILVER PETRUCCELLI & ASSOC.
3190 WHITNEY AVENUE, HAMDEN CT 06518
311 STATE STREET NEW LONDON, CT 06320
P. 203 230 9007 silverpetrucelli.com

SEAL & S



Project Title:

TENANT FIT-OUT:
POPUP BAGELS
661 DRIGGS AVENUE
BROOKLYN, NY 11211

Revision: Description: Date: Revised By:

Date: 8/20/24 Scale: NONE
Drawn By: MPB Project Number: 24-119

Sheet Title:

MECHANICAL DETAILS
SHEET 1

Sheet Number:

M-104.00



**ARCHITECTS
ENGINEERS
INTERIORS**

ARCHITECT:
SILVER PETRUCELLI & ASSOC.
3190 WHITNEY AVENUE, HAMDEN CT 06518
311 STATE STREET NEW LONDON, CT 06320
P. 203 230 9007 silverpetrucci.com

ME/P/SP:
SILVER PETRUCELLI & ASSOC.
3190 WHITNEY AVENUE, HAMDEN CT 06518
311 STATE STREET NEW LONDON, CT 06320
P. 203 230 9007 silverpetrucci.com



Project Title:
**TENANT FIT-OUT:
POPUK BAGELS**
661 DRIGGS AVENUE
BROOKLYN, NY 11211

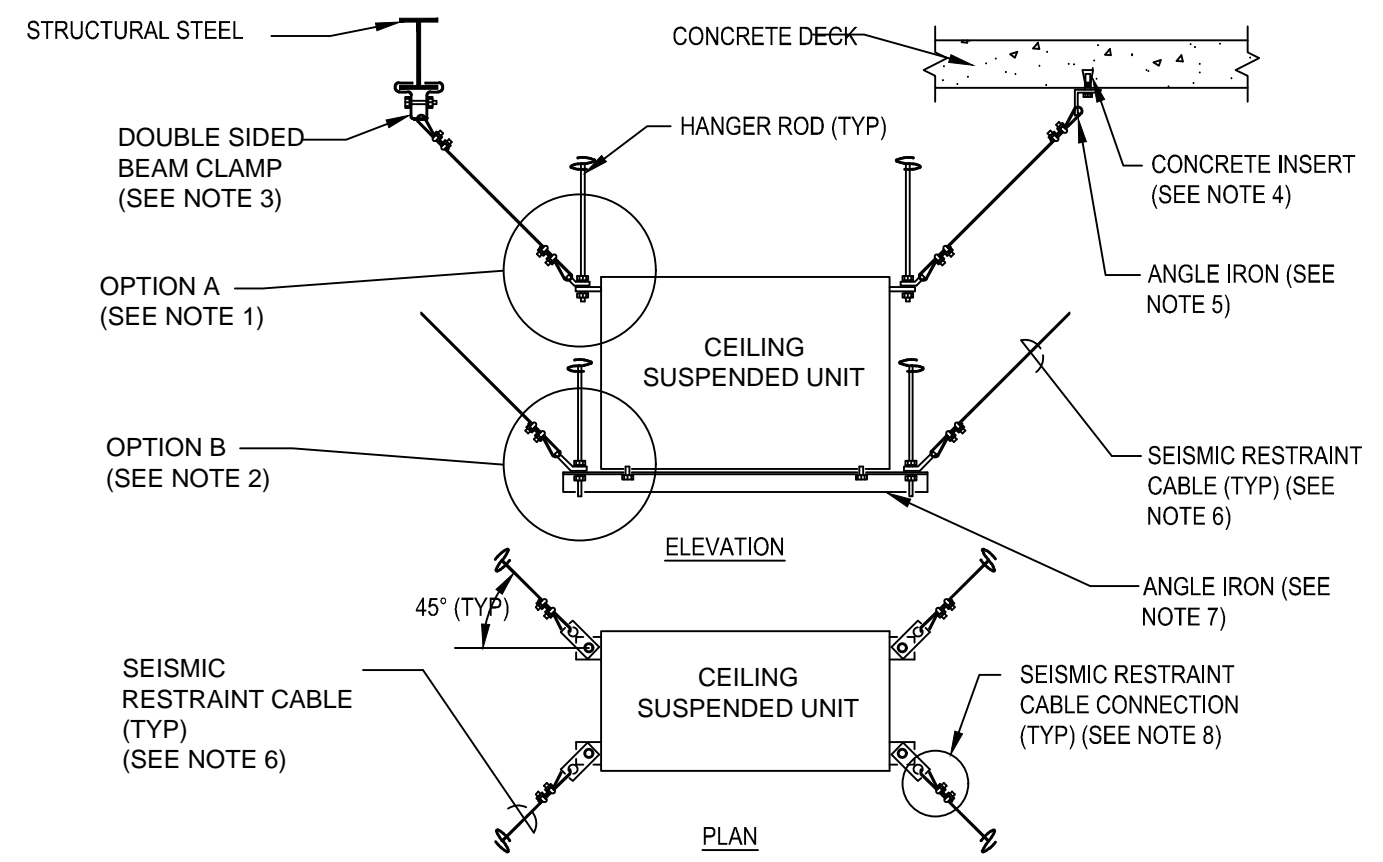
Revision: Description: Date: Revised By:

Date: 8/20/24 Scale: NONE
Drawn By: MPB Project Number: 24-119

Sheet Title:
**MECHANICAL DETAILS
SHEET 2**

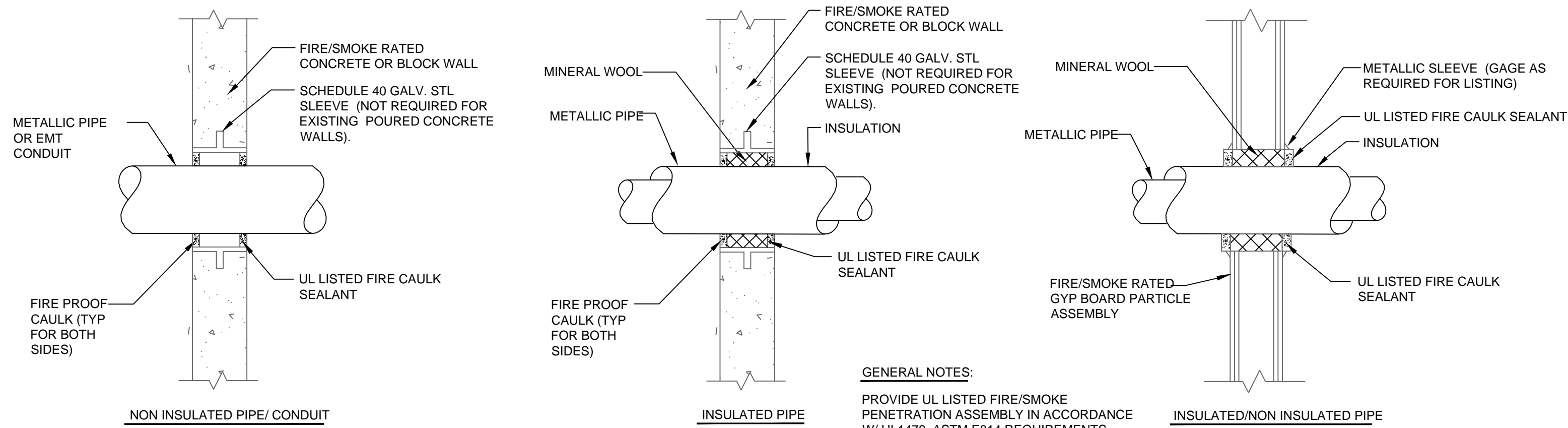
Sheet Number:

M-105.00



NOTES:

- OPTION A APPLIES TO EQUIPMENT HAVING TOP OR SIDE ATTACHMENT.
- OPTION B APPLIES TO EQUIPMENT SUPPORTED FROM THE BOTTOM OF THE EQUIPMENT.
- USE DOUBLE SIDED BEAM CLAMPS FOR ATTACHMENT TO STRUCTURAL STEEL OR JOISTS.
- USE CONCRETE INSERTS FOR ATTACHMENT TO CONCRETE DECK TYPE CONSTRUCTION.
- ANGLE IRON SHALL BE 2-1/2"x5"x1/4" ANGLE 2" WIDE WITH (2) 9/16" HOLES FOR FASTENING TO CONCRETE DECK.
- SIZE CABLE BASED ON SEISMIC HAZARD LEVEL SPECIFIED. PROVIDE CABLE WITH 1/2" OF SLACK WHERE CABLES ARE USED WITH VIBRATION ISOLATED EQUIPMENT.
- PROVIDE 2 ANGLES FOR BOTTOM SUPPORT OF UNIT (OPTION B). PROVIDE (4) 2"x2"x1/4" ANGLES WELDED TO BOTTOM SUPPORT ANGLES AND TO UNIT. (THIS IS NOT REQUIRED WHERE UNIT IS PROVIDED WITH BOTTOM MOUNTING HOLES).
- REFER TO SMACNA "SEISMIC RESTRAINT MANUAL GUIDELINES FOR MECHANICAL SYSTEMS" FOR CABLE CONNECTION DETAIL.



GENERAL NOTES:

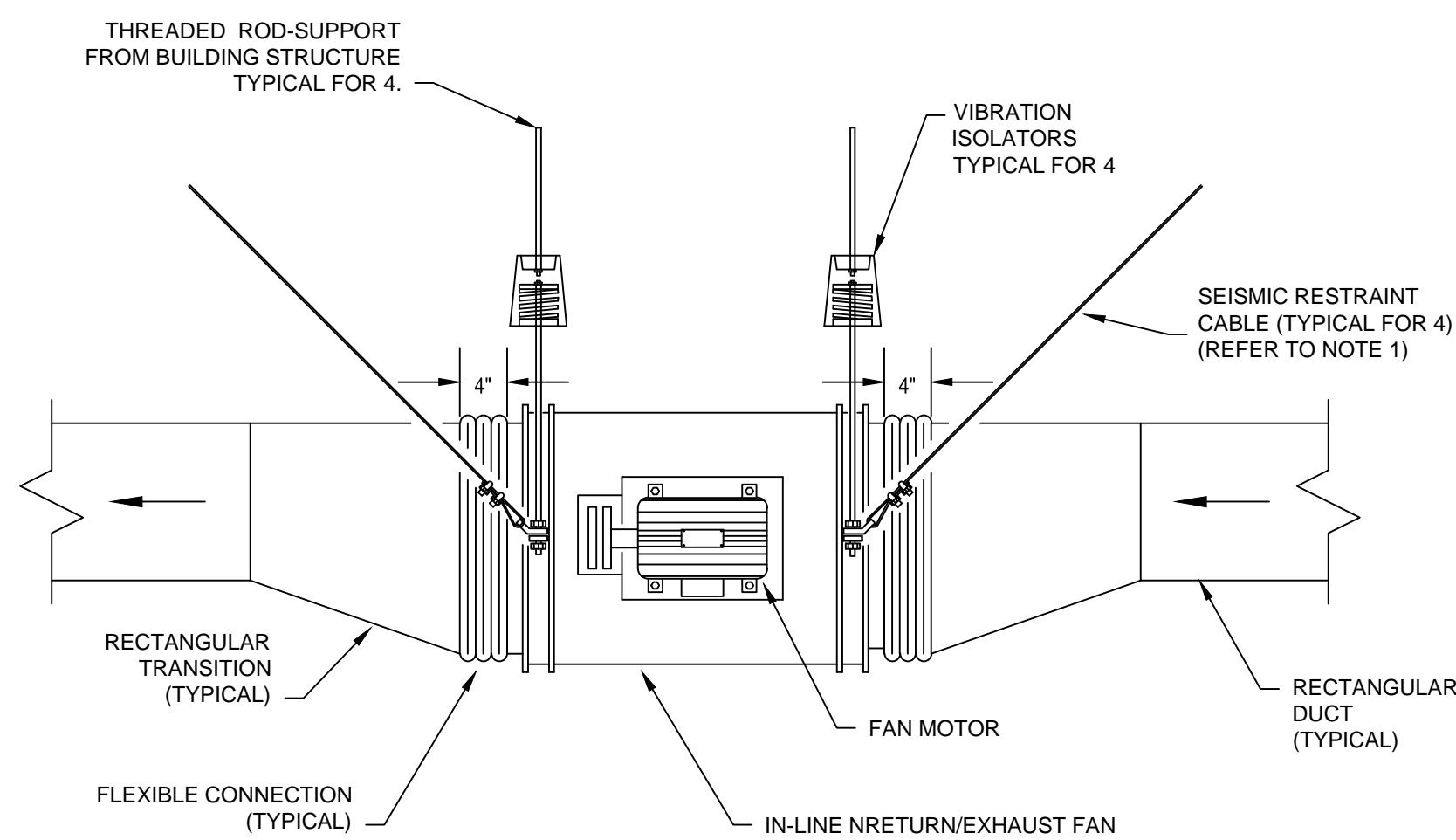
- PROVIDE UL LISTED FIRE/SMOKE PENETRATION ASSEMBLY IN ACCORDANCE W/ UL1479, ASTM E814 REQUIREMENTS FOR WALL TYPE, RATING, PIPE SIZE AND INSULATION THICKNESS INSTALLED. PLASTIC PIPE SYSTEMS: REFER TO MANUFACTURERS REQUIREMENTS.

TYPICAL SEISMIC BRACING FOR SUSPENDED EQUIPMENT DETAIL

NOT TO SCALE

PIPE PENETRATION WITH FIRE / SMOKE SEAL

NOT TO SCALE

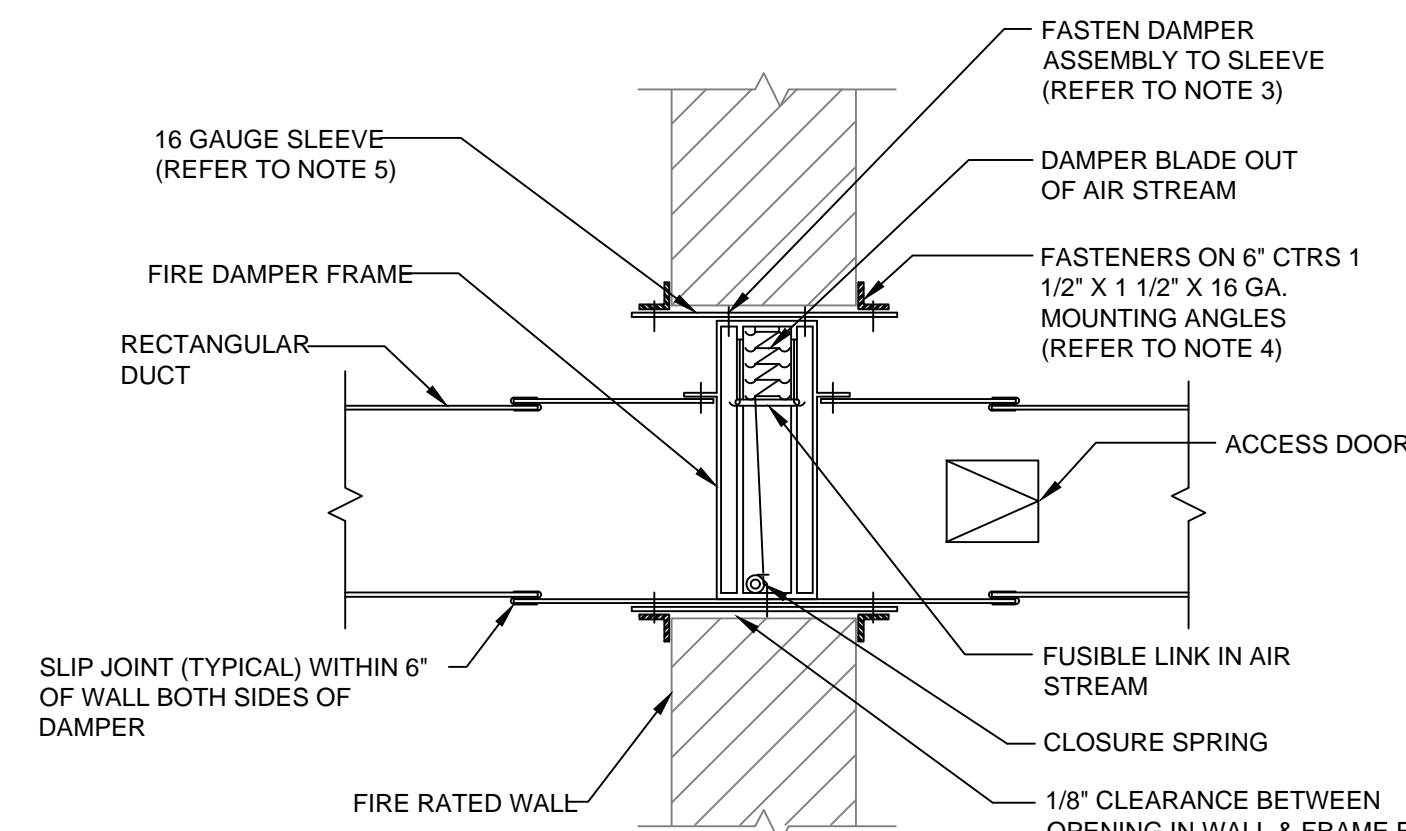


NOTES:

- INSTALL SEISMIC RESTRAINT CABLE PER SPECIFICATIONS, SMACNA SEISMIC RESTRAINT MANUAL-GUIDELINES FOR MECHANICAL SYSTEMS.

INLINE CENTRIFUGAL FAN INSTALLATION DETAIL

NOT TO SCALE

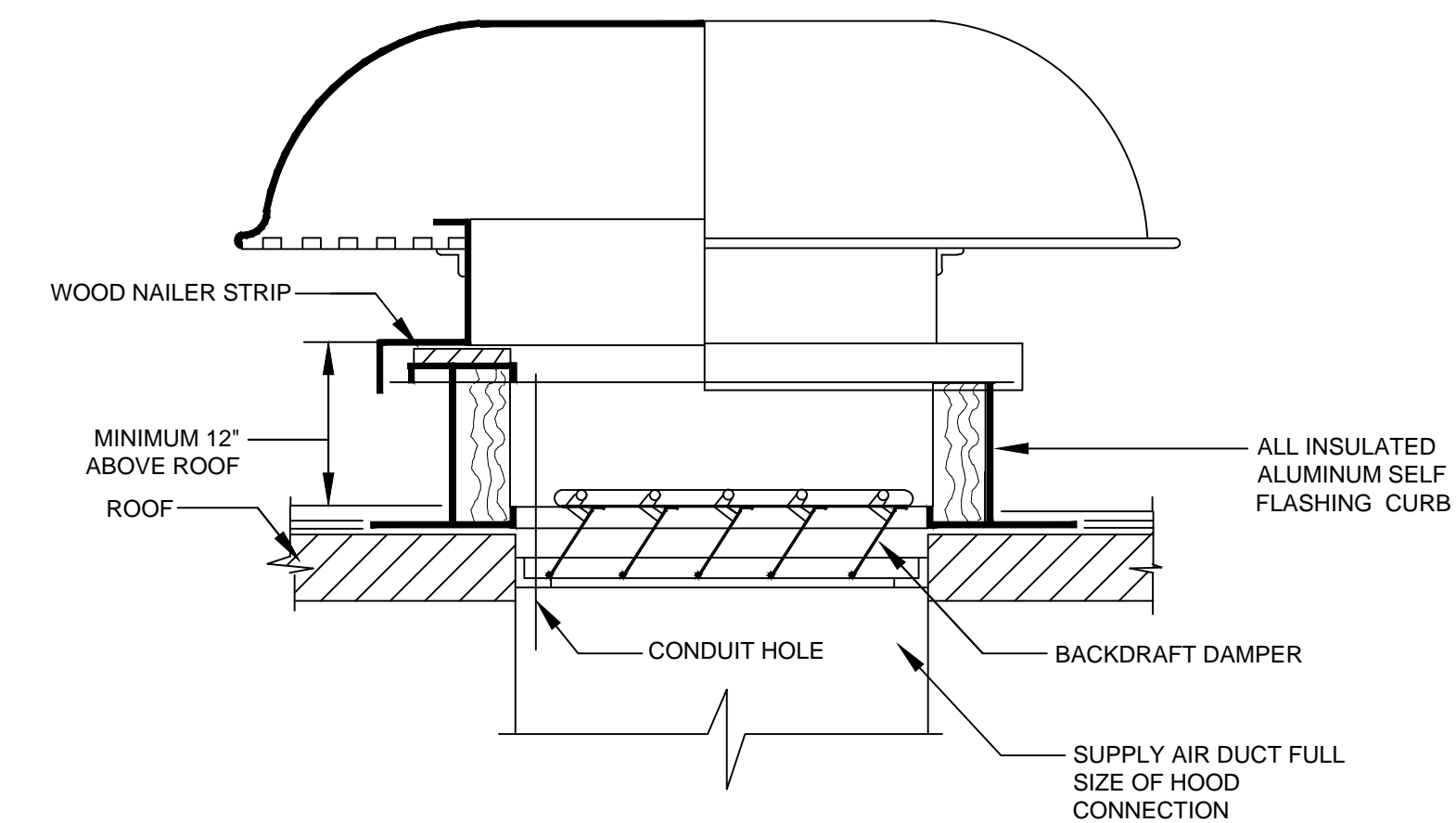


NOTES:

- INSTALL ACCESS DOOR IN DUCT FOR DAMPER ACCESS. ACCESS DOORS SHALL BE DOUBLE WALL WHEN LOCATED IN INSULATED DUCTWORK.
- INSTALL IN ACCORDANCE WITH MANUFACTURERS RECOMMENDATIONS AND NFPA-90A.
- REFER TO SMACNA "FIRE, SMOKE AND RADIATION DAMPER INSTALLATION GUIDE FOR HVAC SYSTEMS" FOR FIRE DAMPER INSTALLATION DETAILS.
- MOUNTING ANGLES SHALL BE 2" X 2" X 1/8 GA. FOR DAMPERS 48" OR LARGER IN WIDTH OR HEIGHT.
- SLEEVE THICKNESS SHALL NOT BE LESS THAN THE GAUGE OF THE DUCT.
- INSTALLATION AND MATERIALS SHALL BE IN ACCORDANCE WITH U.L. 555.
- VERTICAL DAMPER INSTALLATION IS INDICATED, HORIZONTAL MOUNTING IS SIMILAR.
- PROVIDE ACCESS DOOR IN DRYWALL CEILINGS FOR DAMPERS LOCATED ABOVE INACCESSIBLE CEILINGS.
- PROVIDE FIRE DAMPERS AT ALL PENETRATIONS OF WALLS WITH FIRE RATED CONSTRUCTION. REFER TO ARCHITECTURAL DRAWINGS.

FIRE DAMPER MOUNTING DETAIL

NOT TO SCALE



ROOF INTAKE/EXHAUST INSTALLATION DETAIL

NOT TO SCALE