

Report By:

National TAB



**Report: TAB PRACTICE**

**Function: Test, Adjust, & Balance**

**Date: 08/14/2025**

**Completed By: National TAB**

# PROJECT

## 08-11-25 CULVERS ROCKWALL REVIVE

2475 Ridge Road

Rockwall, TX 75087

### Client

Culvers Franchising System Inc

1240 Water Street

Prairie du Sac, WI 53578

# National TAB

Project: 08-11-25 CULVERS ROCKWALL REVIVE

## Table Of Contents

Section	Page #
REMARKS	3
BALANCE SCHEDULE	10
Checklist Data	11
FAN - Exhaust	25
Kitchen Hood Type I	30
GRD LAYOUT	34

## Issue List

- Cracked Belt ( Fryer KEF2)
- FRYER MUA PSP CLOGGED
- MUA Filter Replacement
- Occupancy Schedule
- Recommend End Panels
- RTU'S Economizer Not Functional



**08-11-25 CULVERS ROCKWALL REVIVE**

**Project Issue Information**

**Issue Name :** Cracked Belt ( Fryer KEF2)  
**Description :** Cracked belt on kitchen fryer exhaust fan.  
**Created By :** National TAB                      **Assigned To :** National TAB - Dan Hertenstein  
**Status :** Closed  
**Priority :** **Medium**                                      **Asset Tag :**  
**Originated Date :** 08/14/2025 - Cavin Van - National TAB

Project Issue File Details



08/14/2025

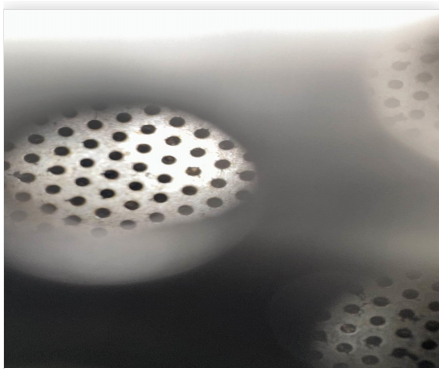


**08-11-25 CULVERS ROCKWALL REVIVE**

**Project Issue Information**

**Issue Name :** FRYER MUA PSP CLOGGED  
**Description :** MUA PSP has low airflow due to PSP being clogged.  
**Created By :** National TAB                      **Assigned To :** National TAB - Dan Hertenstein  
**Status :** Closed  
**Priority :** Urgent                                      **Asset Tag :**  
**Originated Date :** 08/14/2025 - Cavin Van - National TAB

Project Issue File Details



08/14/2025



**08-11-25 CULVERS ROCKWALL REVIVE**

**Project Issue Information**

**Issue Name :** MUA Filter Replacement  
**Description :** Recommend replacing filter mesh.  
**Created By :** National TAB                      **Assigned To :** National TAB - Dan Hertenstein  
**Status :** Open  
**Priority :** Urgent                                      **Asset Tag :**  
**Originated Date :** 08/14/2025 - Cavin Van - National TAB

Project Issue File Details



08/14/2025



**08-11-25 CULVERS ROCKWALL REVIVE**

**Project Issue Information**

<b>Issue Name :</b>	Occupancy Schedule		
<b>Description :</b>	Recommend wiring thermostats for occupancy schedule, installed of the current jumper that causes the units to be in occupancy 24/7.		
<b>Created By :</b>	National TAB	<b>Assigned To :</b>	National TAB - Dan Hertenstein
<b>Status :</b>	Open		
<b>Priority :</b>	InfoOnly	<b>Asset Tag :</b>	
<b>Originated Date :</b>	08/14/2025 - Cavin Van - National TAB		



**08-11-25 CULVERS ROCKWALL REVIVE**

**Project Issue Information**

<b>Issue Name :</b>	Recommend End Panels		
<b>Description :</b>	Recommend adding additional end panels.		
<b>Created By :</b>	National TAB	<b>Assigned To :</b>	National TAB - Dan Hertenstein
<b>Status :</b>	Open		
<b>Priority :</b>	InfoOnly	<b>Asset Tag :</b>	
<b>Originated Date :</b>	08/14/2025 - Cavin Van - National TAB		



## 08-11-25 CULVERS ROCKWALL REVIVE

### Project Issue Information

**Issue Name :** RTU'S Economizer Not Functional  
**Description :** Kitchen and Dining room RTU have non operational economizers, had to manually set outside air.  
**Created By :** National TAB                      **Assigned To :** National TAB - Dan Hertenstein  
**Status :** Open  
**Priority :** Medium                                      **Asset Tag :**  
**Originated Date :** 08/14/2025 - Cavin Van - National TAB

### AIR BALANCE SCHEDULE

UNIT	AREA SERVED	HVAC SUPPLY		HVAC RETURN		HVAC OUTDOOR		OA %		HOOD MAKE-UP		HOOD EXHAUST		GENERAL EXH.	
		DESIGN	ACTUAL	DESIGN	ACTUAL	DESIGN	ACTUAL	DESIGN	ACTUAL	DESIGN	ACTUAL	DESIGN	ACTUAL	DESIGN	ACTUAL
PRV-1		5200	6177	4200	5122	1000	1055	19.2%	17.1%						
PRV-2		5200	4680	4300	3796	900	884	17.3%	18.9%						
PRV-3				0	0			#DIV/0!	#DIV/0!						
KEF-1													2191		
KEF-2												3400	1992		
EF-1															161
<b>TOTALS</b>		10400	10857	8500	8918	1900	1939			0	0	3400	4183	0	161

#### NET BUILDING AIRFLOW CALCULATION

TOTALS	DESIGN	ACTUAL
TOTAL OA	1900	1939
TOTAL EXHAUST	3400	4344
<b>NET AIRFLOW</b>	<b>-1500</b>	<b>-2405</b>

DOOR TESTED	BUILDING PRESSURE MEASUREMENTS (IN. H2O)
FRONT	0.005
SIDE	-0.0037
REAR	-0.005
<b>AVERAGE</b>	<b>-0.0012</b>

#### FINAL CHECKS

- ACTUAL NET AIRFLOW COINCIDES WITH DESIGN: ✓

---

- MEASURED PRESSURES COINCIDES WITH ACTUAL NET AIRFLOW: ✓

---

- PRESSURE FALLS WITHIN IMC TOLERANCE OF +/-0.02" W.C. ✓

NOTES:

## CheckList List

- PLAN REVIEW
- STEP 1: REVIVE CHECKLIST
- TECH - STEP 2: INITIAL WALKTHROUGH
- TECH - STEP 3: UNIT DATA AND EVAL
- TECH - STEP 4: TEST, ADJUST AND BALANCE
- TECH - STEP 5: FINAL TESTS



## 08-11-25 CULVERS ROCKWALL REVIVE

### CheckList Information

**Name :** PLAN REVIEW **Status :** Not Completed  
**Assigned Organization :** National TAB **Asset :**  
**Requesting Organization :** National TAB  
**Created Date :** 08/11/2025 - Natasha Louw - National TAB

### CheckList Item Details

#### Asset Requirements

We have the latest set of construction drawings and are not working off the Bid or Permit Set: N/A

Comment:

Diffuser totals equal the scheduled airflow of each piece of equipment N/A

Comment:

Scheduled Hood airflow match scheduled EF and MAU airflows N/A

Comment:

#### Files to Upload

A PDF summary is uploaded and matches the equipment/scope of the project No

Comment:

Balance schedule is uploaded? Yes

Comment:

Required account checklists are created Yes

Comment:

**Mechanical drawings are uploaded**

No

**Comment:**

**If job is a Revive, Pre-design, or Remodel. Check if we have an old report on sharepoint or the old FaciliBuild and upload to files section.**

N/A

**Comment:**

**GRD Layout is uploaded**

No

**Comment:**

**Jurisdiction Requirements**

**Is job in Orlando, FL metro area or Phoenix metro area? If yes, a smoke detector checklist needs to be created for each RTU or AHU**

No

**Comment:**

**Is job in Broward County, FL? If so, is Broward County on the permit (Ask the GC)? If Broward County is on the permit, then we CANNOT perform the balance.**

No

**Comment:**



## 08-11-25 CULVERS ROCKWALL REVIVE

### CheckList Information

**Name :** STEP 1: REVIVE CHECKLIST **Status :** Completed

**Assigned Organization :** National TAB **Asset :**

**Requesting Organization :** National TAB

**Created Date :** 08/11/2025 - Natasha Louw - National TAB

**Completed Date :** 08/14/2025 - Cavin Van - National TAB

### CheckList Item Details

#### INITIAL BUILDING REVIEW:

What is the initial building pressure before making any changes?

**Comment:**

Left side: 0.0026" Right side: 0.0026" Rear: -0.0129

Are thermostats programmed?

Yes

**Comment:**

Are building pressure relief working properly?

**Comment:**

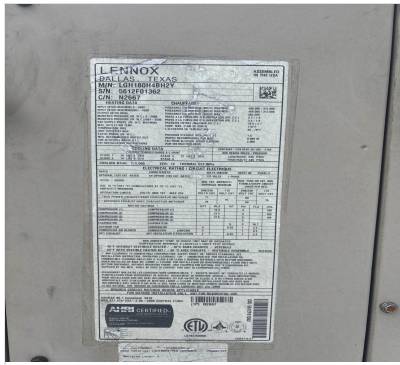
Yes

#### INITIAL AIRFLOWS:

##### SUPPLY RTU-1

**Comment:**

3845 CFM



08/13/2025



08/13/2025

**OA RTU-1**

**Comment:**

Initially closed

**SUPPLY RTU-2**

**Comment:**

4311 CFM

**OA RTU-2**

**Comment:**

Initially closed

**SUPPLY RTU-3**

**Comment:**

N/A

**OA RTU-3**

**Comment:**

N/A

**EF-1**

**Comment:**

GRILL initial airflow: 2390 CFM

**EF-2**

**Comment:**

FRYER initial airflow: 2004

**EF-3**

**Comment:**

Not working

**EF-4**

**Comment:**

N/A

**MAU-1**

**Comment:**

Initial airflow: 2390 CFM



## 08-11-25 CULVERS ROCKWALL REVIVE

### CheckList Information

**Name :** TECH - STEP 2: INITIAL WALKTHROUGH **Status :** Completed  
**Assigned Organization :** National TAB **Asset :**  
**Requesting Organization :** National TAB  
**Created Date :** 08/11/2025 - Natasha Louw - National TAB  
**Completed Date :** 08/14/2025 - Cavin Van - National TAB

### CheckList Item Details

#### INITIAL SITE WALKTHROUGH

All diffusers and grilles are installed and match design? Yes

Comment:

All hood filters installed and accounted for? Yes

Comment:

Hoods are wired and have power? Yes

Comment:

Hood is free of alarms? Yes

Comment:

Thermostats have power? Yes

Comment:

Have trades/general contractor been notified about any issues and are they created on FaciliBuild?

Comment:

N/A



## 08-11-25 CULVERS ROCKWALL REVIVE

### CheckList Information

**Name :** TECH - STEP 3: UNIT DATA AND EVAL **Status :** Completed

**Assigned Organization :** National TAB **Asset :**

**Requesting Organization :** National TAB

**Created Date :** 08/11/2025 - Natasha Louw - National TAB

**Completed Date :** 08/14/2025 - Cavin Van - National TAB

### CheckList Item Details

UNIT DATA AND EVALUATION WHILE GATHERING UNIT DATA CHECK THE FOLLOWING:

RTU's/AHU's

Economizers are assembled and functional?	No
---	----

Comment:

DCV Max damper opening position is set to minimum?	N/A
--	-----

Comment:

Free cooling enthalpy set point set for lowest setting (Typically "D")	Yes
--	-----

Comment:

Motors are all operating below the FLA rating?	Yes
--	-----

Comment:

Are belts tight?

Comment:

No, Kitchen RTU is not tight and Fryer KEF2 has a cracked belt.

If direct drive unit is the speed controller working.

**Comment:**

Not able to find speed controller for KEF1.

---

**Is gas piping installed and valves turned on?**

Yes

**Comment:**

---

**Unit free of noticeable noise and vibration**

Yes

**Comment:**

---

**EF's**

---

**Rotation is correct?**

Yes

**Comment:**

---

**Belts are tight?**

**Comment:**

---

**Grease cup installed on hood fan?**

Yes

**Comment:**

---

**Hinge kit installed installed on hood fan?**

No

**Comment:**

Kitchen exhaust fan serving the grill does not have a hinge kit installed.

---

**Lean fan back. Is grease duct installation adequate and is duct ran all the way to the base of the fan?**

Yes

**Comment:**

---

**Flex conduit is long enough so that fan can be completely tilted back?**

Yes

**Comment:**

---

**There is no major leakage around base of fan?**

Yes

**Comment:**

---

**Is the motor operating below the motor FLA rating?**

Yes

**Comment:**

---

<b>For restroom fan(s) is the back draft damper installed and can it fully open?</b>	Yes
--	-----

---

**Comment:**

---

<b>Unit free of noticeable noise and vibration?</b>	Yes
---	-----

---

**Comment:**

---

**MUA**

---

---

<b>Rotation is correct?</b>	Yes
-----------------------------	-----

---

**Comment:**

---

<b>Gas piping is installed and valves are in on position?</b>	N/A
---	-----

---

**Comment:**

---

<b>Heater tested and is functional?</b>	N/A
---	-----

---

**Comment:**

---

<b>Internal motorized damper is fully opening?</b>	N/A
--	-----

---

**Comment:**

---

<b>Motor is operating below the FLA rating?</b>	Yes
---	-----

---

**Comment:**

---

<b>Unit free of noticeable noise and vibration?</b>	Yes
---	-----

---

**Comment:**

---

**HOODS**

---

---

<b>Kitchen equipment installed in proper places?</b>	Yes
--	-----

---

**Comment:**

---

<b>Can kitchen equipment be turned on for final smoke test?</b>	Yes
---	-----

---

**Comment:**

---

**DOCUMENTATION**

Have trades/general contractor been notified about any issues and are they created on FaciliBuild?

N/A

**Comment:**



## 08-11-25 CULVERS ROCKWALL REVIVE

### CheckList Information

**Name :** TECH - STEP 4: TEST, ADJUST AND BALANCE      **Status :** Completed

**Assigned Organization :** National TAB      **Asset :**

**Requesting Organization :** National TAB

**Created Date :** 08/11/2025 - Natasha Louw - National TAB

**Completed Date :** 08/14/2025 - Cavin Van - National TAB

### CheckList Item Details

TEST, ADJUST, AND BALANCE ALL EQUIPMENT:

DURING TESTING MAKE NOTE OF THE FOLLOWING:

Is space free of drafting? Yes

Comment:

Is space comfortable in all areas? Yes

Comment:

Is the space free of ventilation noise? Yes

Comment:

If deviations from design were necessary to resolve 1-3 what were they? Otherwise put "NA".

Comment:

NA



## 08-11-25 CULVERS ROCKWALL REVIVE

### CheckList Information

**Name :** TECH - STEP 5: FINAL TESTS **Status :** Completed  
**Assigned Organization :** National TAB **Asset :**  
**Requesting Organization :** National TAB  
**Created Date :** 08/11/2025 - Natasha Louw - National TAB  
**Completed Date :** 08/14/2025 - Cavin Van - National TAB

### CheckList Item Details

#### FINAL TESTS

#### HOOD CAPTURE TEST

List equipment turned on for testing

Comment:

List smoke candle type used

Comment:

N/A

Smoke test capture - Perimeter of hood

Comment:

100%

- [Open](#) IMG\_0251\_799475480.mov  
08/14/2025
- [Open](#) IMG\_0250\_2003130743.mov  
08/14/2025

Smoke test capture - Top of cooking surface

Comment:

100%

**WITNESS**

**Date test was completed**

08/14/2025

**Comment:**

**TAB tech name / Firm**

**Comment:**

CAVIN VAN / NATIONAL TAB

**Site super name / Firm**

**Comment:**

BECKY LAPP / CULVERS

**Owner representative name / Firm (if Applicable)**

**Comment:**

**Building pressure at front & back doors (All Systems On)**

**Comment:**

Yes

**ADDITIONAL**

**Do actual net building airflow, design net building airflow, and pressure coincide? If not why? (All three should either be positive or negative)**

**Comment:**

Yes

**Thermostats are programmed?**

Yes

**Comment:**

# National TAB

Project: 08-11-25 CULVERS ROCKWALL REVIVE

System/Unit: FAN - Exhaust



Asset: EF1

AREA:RESTROOM

Unit Data		
	Design	Actual
MFG	NA	NA
Model Num	NA	NA
Serial Num	-	16377001
Type	-	DOWNBLAST
Configuration	-	VERTICAL

Test Data		
	Design	Actual
CFM	-	161
Fan RPM	-	NA
Fan Rotation	-	CW
Motor RPM	-	NA
System SetPt	-	NA
RL Voltage	-	NA
RL Amperage	-	0.74/0.78
Total ESP	-	0.006
Fan Inlet SP	-	0.006
Fan Discharge SP	-	ATM

Motor Data		
	Design	Actual
Motor MFG	-	FASCO
Frame	-	N/A
Horsepower	-	0.014
Motor Rpm	-	1500
Phase	-	N/A
Voltage (rated)	-	115
Amperage (rated)	-	0.7
Service Factor	-	N/A

Completed By: Cavin Van on 08/14/2025

## Unit Data - PHOTO LOG



08/14/2025

# National TAB

Project: 08-11-25 CULVERS ROCKWALL REVIVE

System/Unit: FAN - Exhaust



Asset: KEF1

AREA:KITCHEN

Unit Data		
	Design	Actual
MFG	NA	CAPTIVE AIRE
Model Num	NA	DU180HFA
Serial Num	-	4745772
Type	-	UPBLAST
Configuration	-	VERTICAL

Motor Data		
	Design	Actual
Motor MFG	-	TECO
Frame	-	145T
Horsepower	-	1
Motor Rpm	-	1150
Phase	-	3
Voltage (rated)	-	230
Amperage (rated)	-	3.44
Service Factor	-	1.15

Drive Data	
	Actual
Motor Sheave Size	DD
Motor Bore Size	DD
Motor Sheave SetPt	DD
Fan Sheave Size	DD
Fan Sheave Bore	DD
Belt CL Distance	DD
Num of Belts	DD
Belt Size	DD

Test Data		
	Design	Actual
CFM	-	2191
Fan RPM	-	NA
Fan Rotation	-	CCW
Motor RPM	-	NA
RL Voltage	-	203/205/202
RL Amperage	-	3.4/3.18/3.24
Suction ESP	-	NA
Discharge ESP	-	ATM
Total ESP	-	NA

Completed By: Cavin Van on 08/14/2025

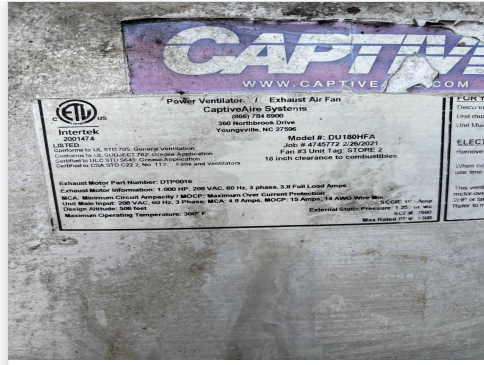
Notes:  
GRIDDLE  
Unable to lean fan back to get static pressure

Written By: Cavin Van on 08/14/2025

# Unit Data - PHOTO LOG



08/13/2025



08/13/2025

# National TAB

Project: 08-11-25 CULVERS ROCKWALL REVIVE

System/Unit: FAN - Exhaust



Asset: KEF2

AREA:KITCHEN

Unit Data		
	Design	Actual
MFG	NA	CARRIER
Model Num	NA	DU50HFA
Serial Num	-	206140
Type	-	UPBLAST
Configuration	-	VERTICAL

Motor Data		
	Design	Actual
Motor MFG	-	A.O SMITH
Frame	-	56
Horsepower	-	0.5
Motor Rpm	-	1725
Phase	-	3
Voltage (rated)	-	230
Amperage (rated)	-	2.6
Service Factor	-	1.25

Drive Data	
	Actual
Motor Sheave Size	4"
Motor Bore Size	0.75"
Motor Sheave SetPt	NA
Fan Sheave Size	5.5"
Fan Sheave Bore	0.75"
Belt CL Distance	5.5
Num of Belts	1
Belt Size	TRUFLEX 250 4L250

Test Data		
	Design	Actual
CFM	-	1992
Fan RPM	-	1234
Fan Rotation	-	CCW
Motor RPM	-	1747
RL Voltage	-	204
RL Amperage	-	1.85
Suction ESP	-	-0.61"
Discharge ESP	-	ATM
Total ESP	-	0.61"

Completed By: Cavin Van on 08/14/2025

Notes:  
FRYER

Written By: Cavin Van on 08/14/2025

## Unit Data - PHOTO LOG



08/13/2025

# National TAB

Project: 08-11-25 CULVERS ROCKWALL REVIVE

System/Unit: Kitchen Hood Type I



Asset: HD1

AREA:KITCHEN

Unit Data		
	Design	Actual
MFG	NA	NA
Model Num	NA	NA
Job / Serial Num	-	N/A
Type	-	UPBLAST
Hood length	-	184"
Hood Width	-	48"

Test Data Exhaust		
	Design	Actual
Filter Size 1	-	16X16
Filter Qty 1	-	5
Filter AK factor size 1	-	1.66
Filter Total AK Area	-	8.3
Filter1 FPM	-	232
Filter2 FPM	-	295
Filter3 FPM	-	286
Filter4 FPM	-	260
Filter5 FPM	-	249
Filter Ave FPM(corr)	-	264
CFM	-	2191

Cooking Equipment	
	Actual
Item 1	WARMER
Item 2	GRILL

Completed By: Cavin Van on 08/14/2025

Notes:

Grill

MUA 12"

Written By: Cavin Van on 08/13/2025

## Unit Data - PHOTO LOG



08/14/2025

# National TAB

Project: 08-11-25 CULVERS ROCKWALL REVIVE

System/Unit: Kitchen Hood Type I



Asset: HD2

AREA:KITCHEN

Unit Data		
	Design	Actual
MFG	NA	NA
Model Num	NA	NA
Job / Serial Num	-	N/A
Hood length	-	111"
Hood Width	-	3"

Test Data Exhaust		
	Design	Actual
Filter Size 1	-	16X16
Filter Size 2	-	16X20
Filter Qty 1	-	2
Filter Qty 2	-	4
Filter AK factor size 1	-	1.66
Filters AK factor size 2	-	2.10
Filter Total AK Area	-	11.72
Filter1 FPM	-	162
Filter2 FPM	-	164
Filter3 FPM	-	194
Filter4 FPM	-	205
Filter5 FPM	-	150
Filter6 FPM	-	149
Filter Ave FPM(corr)	-	170
CFM	-	1992

Cooking Equipment	
	Actual
Item 1	FRYER

Completed By: Cavin Van on 08/14/2025

Notes:  
FRYER  
MUA WIDTH: 16"

Written By: Cavin Van on 08/13/2025

**Unit Data - PHOTO LOG**



**08/14/2025**



**08/14/2025**

