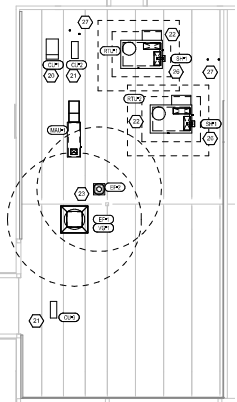
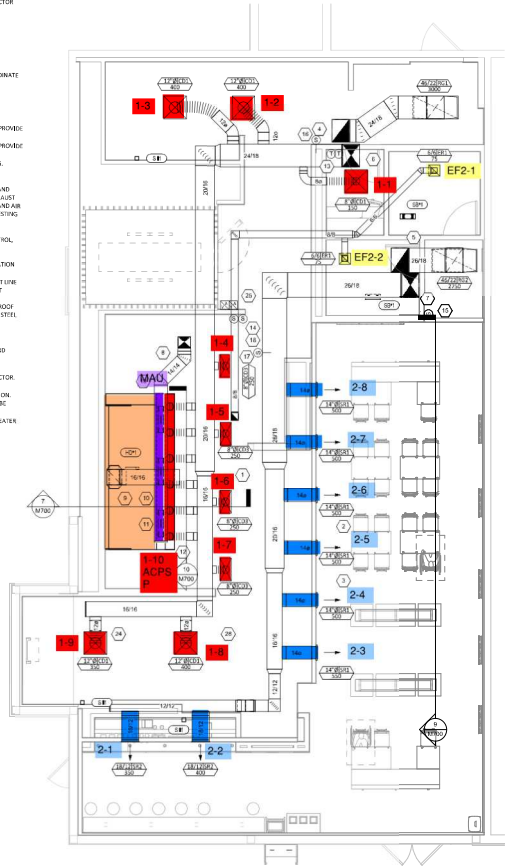


**HVAC PLAN NOTES**

1. SEE MECHANICAL REFLECTOR COVER PLAN FOR CEILING MOUNTED EQUIPMENT LOCATION, TYPICAL.
2. PAINT DUCTWORK VISIBLE THROUGH DINING ROOM SUPPLY REGISTERS AND RETURN GRILL BLACK, TYPICAL.
3. ADJUST SUPPLY REGISTERS SO THAT SUPPLY AIR HITS WALL ON OPPOSITE SIDE OF ROOM AT APPROXIMATELY 7' AFT WITH NO DRAFTS FILL IN THE DINING ROOM.
4. 2418 R DUCT UP FOR TRANSITION TO RTU-1 RETURN CONNECTION IN ROOF CURB.
5. 2418 R DUCT UP FOR TRANSITION TO RTU-2 RETURN CONNECTION IN ROOF CURB.
6. 2418 R DUCT UP FROM BUILDING SUPPLY THROUGH ROOF, TRANSITION TO RTU-1 SUPPLY CONNECTION IN ROOF CURB. RTU-1 SHALL HAVE AN INTEGRAL SMOKE DETECTOR MOUNTED IN THE SUPPLY AIR STREAM IN TUCKER SMOKE DETECTOR TO W-1 CONNECTION.
7. 2418 R DUCT UP FROM BUILDING SUPPLY TO RTU-2 SUPPLY CONNECTION, TRANSITION IN ROOF CURB. RTU-2 SHALL HAVE AN INTEGRAL SMOKE DETECTOR MOUNTED IN THE SUPPLY AIR STREAM IN TUCKER SMOKE DETECTOR TO W-2 CONNECTION.
8. 1418 R DUCT UP THROUGH ROOF, TRANSITION TO WALL SUPPLY CONNECTION IN ROOF CURB.
9. 1618 R DUCT UP FROM HOOD THROUGH ROOF TO EF-1 COMPLIANT WITH NFPA 96. PROVIDE RADIUSSED ELBOWS WITH AN INSIDE RADIUS OF 0.5W AT ELBOWS IN GREASE DUCT.
10. SEE DUCT UP THROUGH ROOF TO EF-2.
11. THE ROOF TO OPEN TO MAKE UP AIR FOR FRESH CONNECTION, TRANSITION TO SUPPLY RETURN OPENING SET, TYPICAL FOR 3.
12. 8" (EA.) DUCT DOWN TO AC PIP DUCT CONNECTION, TRANSITION TO SUPPLY RETURN OPENING SET, TYPICAL, CAP UNUSED DUCT CONNECTIONS.
13. INSTALL RING-LINE VERTICAL FIBER OPTIC POINTS (NUMBERED BY TEAMS FOR RTU-1 AND RTU-2 AT THIS LOCATION AT 48" AFF, COORDINATE WITH ELECTRICAL SYSTEMS IN THIS AREA. PROVIDE WIRING AS SHOWN IN DETAIL 2410.
14. INSTALL GRIDPOINT ZONE SENSOR MODULE FURNISHED BY TEAMS FOR RTU-1 AT THIS LOCATION 72" AFF DIRECTLY TO WALL (NO JUNCTION BOX). COORDINATE LOCATION WITH EQUIPMENT. PROVIDE WIRING AS SHOWN IN DETAIL 2410.
15. INSTALL GRIDPOINT ZONE SENSOR MODULE FURNISHED BY TEAMS FOR RTU-2 AT THIS LOCATION 66" AFF DIRECTLY TO WALL (NO JUNCTION BOX). COORDINATE LOCATION WITH EQUIPMENT. PROVIDE WIRING AS SHOWN IN DETAIL 2410.
16. INSTALL GRIDPOINT SUPPLY FRESH FURNISHED BY TEAMS FOR RTU-1 IN THE SUPPLY DUCTWORK UPSTREAM FROM THE FIRST BRANCH CONNECTION. PROVIDE WIRING AS SHOWN IN DETAIL 2410.
17. INSTALL GRIDPOINT SUPPLY FRESH FURNISHED BY TEAMS FOR RTU-2 IN THE SUPPLY DUCTWORK UPSTREAM FROM THE FIRST BRANCH CONNECTION. PROVIDE WIRING AS SHOWN IN DETAIL 2410.
18. INSTALL GRIDPOINT SUPPLY FRESH FURNISHED BY TEAMS FOR RTU-1 AT THIS LOCATION 72" AFF, COORDINATE LOCATION WITH EQUIPMENT. PROVIDE WIRING AS SHOWN IN DETAIL 2410.
19. INSTALL INTERIOR HOOD, 80" L. SUPPORT HOOD PER MANUFACTURER'S INSTALLATION INSTRUCTIONS AND AS DETAILLED IN THE ARCHITECTURAL AND STRUCTURAL DRAWINGS. INSTALL HOOD ACCORDING TO THE REQUIREMENTS OF LISTINGS, IN COMPLIANCE WITH NFPA 96, THE BUILDING CODE, AND AUTHORITIES HAVING JURISDICTION. HOOD SHALL HAVE AN INTEGRAL POINT-COOLER TEMPERATURE SENSOR TO AUTOMATICALLY SHUT OFF THE EXHAUST AND MAKEUP AIR FANS IF COOKING TEMPERATURES ARE DETECTED. EXHAUST DUCT SYSTEM TO BE WELDED OR FACTORY-MANUFACTURED WATER AND AIR TIGHT. INSTALL CLEANING IN PLACE (CIP) AREA AS SHOWN IN DETAIL 2414. A CIP WAGON, CHITOLE WILL PROVIDE AN INDEPENDENT TESTING AGENCY FOR TESTING THE INTEGRITY OF THE GREASE DUCT SYSTEM.
20. INSTALL REFRIGERANT CONDENSING UNIT FOR MAKE UP COOLER ON ROOF AS DETAILLED IN THE ARCHITECTURAL AND STRUCTURAL DRAWINGS. INSTALL REFRIGERANT LINE SET, THERMOSTATIC EXPANSION VALVE, SOLENOID VALVE, TEMPERATURE CONTROL, SIGHT GLASS, FILTER DRIER, PRESSURE CONTROL, LOW AMBIENT CONTROL, AND REFRIGERANT HOODING. TRAP AND LEAK REFRIGERANT LINE PER MANUFACTURER'S INSTALLATION INSTRUCTIONS. INSTALL REFRIGERANT LINE SET WITH AN ASHRAE (AND STANDARD) 15, INSTALL THE REFRIGERANT LINE SET UNDER THE ROOF DECK TO WITHIN 1" OF THE CONDENSING UNIT. CUT 2" HOLE IN HATCH COOLER ROOF FOR REFRIGERANT LINE SET AND FOR THE COOLER MANUFACTURER'S INSTALLATION INSTRUCTIONS AFTER LINE SET IS INSTALLED.
21. INSTALL REFRIGERANT CONDENSING UNIT FOR MAKE UP COOLER ON ROOF AS DETAILLED IN THE ARCHITECTURAL AND STRUCTURAL DRAWINGS. INSTALL REFRIGERANT LINE SET, THERMOSTATIC EXPANSION VALVE, SOLENOID VALVE, TEMPERATURE CONTROL, SIGHT GLASS, FILTER DRIER, PRESSURE CONTROL, LOW AMBIENT CONTROL, AND REFRIGERANT HOODING. TRAP AND LEAK REFRIGERANT LINE PER MANUFACTURER'S INSTALLATION INSTRUCTIONS. INSTALL REFRIGERANT LINE SET WITH AN ASHRAE (AND STANDARD) 15, INSTALL THE REFRIGERANT LINE SET UNDER THE ROOF DECK TO WITHIN 1" OF THE REFRIGERANT CONDENSING UNIT. CUT 2" HOLE IN HATCH COOLER ROOF FOR REFRIGERANT LINE SET AND FOR THE COOLER MANUFACTURER'S INSTALLATION INSTRUCTIONS AFTER LINE SET IS INSTALLED.
22. INSTALL ROOFTOP EQUIPMENT PER MANUFACTURER'S INSTALLATION INSTRUCTIONS AND AS DETAILLED IN THE ARCHITECTURAL AND STRUCTURAL DRAWINGS. INSTALL GREASE VIRUSGUARD SYSTEM FURNISHED BY CHITOLE ON EXHAUST FAN, EF-1.
23. PROVIDE SUPPLY DIFFUSER CONNECTION TO SUPPLY SYSTEM FOR DETAIL, LUMINO, TYPICAL.
24. PROVIDE HOOD VISUAL SMOKE DETECTOR DETECT OR ANNUNCIATOR WITH REMOTE KEY OPERATED RESET. WIRE A LINE BACK TO EACH SMOKE DETECTOR MOUNT 60" AFF, TYPICAL.
25. INSTALL HMI - HOLD AIR FLOWER (MOUNTED BY TEAM) IN STEEL PIPE OF 4" DIA. SEE ELECTRICAL DRAWINGS FOR POWER CONNECTIONS AND CONNECTIONS. INSTALL ON MAINLINE SYSTEM ON CASE OF DISCONNECT PER DETAIL AND ON ANY ACCESS DOORS THROUGH WHICH THE ROOF HAD TO BE VISIBLE IF OPENED.
26. MAINTAIN 10" CLEARANCE BETWEEN WATER HEATER FLUE TERMINATION AND OUTSIDE AIR INTAKES. MAINTAIN 10" CLEARANCE BETWEEN WATER HEATER COMBUSTION AIR INTAKE AND EXHAUST FAN EF-1. DISCHARGE. SEE PLUMBING DRAWINGS FOR MORE INFORMATION ON WATER HEATER FLUE AND COMBUSTION AIR TERMINATIONS.
28. REFER TO ARCHITECTURAL SHEETS FOR SUPPLY REGISTER ELEVATIONS AND LOCATIONS.



**HVAC ROOF PLAN**  
147-117



**HVAC FLOOR PLAN**  
147-117

**NATIONAL**  
4635 Trumbull Blvd. Suite 250  
Hilliard, Ohio 43026  
Phone: (614) 761-9410  
Fax: (614) 562-5340  
Contact: Andy Janosik (614) 326-2028  
ajanosik@nationalengineering.com

8-B DOCUMENT  
NOT FOR CONSTRUCTION

CHITOLE  
THE ONLY CIP WAGON IN THE BUSINESS OF TESTING AND CLEANING IN PLACE (CIP) EQUIPMENT FOR THE FOOD SERVICE INDUSTRY. CONTACT US FOR MORE INFORMATION.  
CHITOLE MFG. CO., INC.  
10000 CLARCONA OCCOEE RD.  
SUITE 100  
OCCOEE, FL 34761

**CHITOLE AMERICAN GRILL**  
CHITOLE MFG. CO., INC.  
10000 CLARCONA OCCOEE RD.  
SUITE 100  
OCCOEE, FL 34761

STORE NO.: 5130  
North Occoee  
10700 CLARCONA OCCOEE RD  
SUITE 100  
OCCOEE, FL 34761

NO.	REVISION	DATE	BY	CHKD.
1	ISSUED FOR PERMIT	08/20/2024	BJ	BJ
2	ISSUED FOR CONSTRUCTION	08/20/2024	BJ	BJ
3	ISSUED FOR CONSTRUCTION	08/20/2024	BJ	BJ
4	ISSUED FOR CONSTRUCTION	08/20/2024	BJ	BJ
5	ISSUED FOR CONSTRUCTION	08/20/2024	BJ	BJ
6	ISSUED FOR CONSTRUCTION	08/20/2024	BJ	BJ
7	ISSUED FOR CONSTRUCTION	08/20/2024	BJ	BJ
8	ISSUED FOR CONSTRUCTION	08/20/2024	BJ	BJ
9	ISSUED FOR CONSTRUCTION	08/20/2024	BJ	BJ
10	ISSUED FOR CONSTRUCTION	08/20/2024	BJ	BJ
11	ISSUED FOR CONSTRUCTION	08/20/2024	BJ	BJ
12	ISSUED FOR CONSTRUCTION	08/20/2024	BJ	BJ
13	ISSUED FOR CONSTRUCTION	08/20/2024	BJ	BJ
14	ISSUED FOR CONSTRUCTION	08/20/2024	BJ	BJ
15	ISSUED FOR CONSTRUCTION	08/20/2024	BJ	BJ
16	ISSUED FOR CONSTRUCTION	08/20/2024	BJ	BJ
17	ISSUED FOR CONSTRUCTION	08/20/2024	BJ	BJ
18	ISSUED FOR CONSTRUCTION	08/20/2024	BJ	BJ
19	ISSUED FOR CONSTRUCTION	08/20/2024	BJ	BJ
20	ISSUED FOR CONSTRUCTION	08/20/2024	BJ	BJ
21	ISSUED FOR CONSTRUCTION	08/20/2024	BJ	BJ
22	ISSUED FOR CONSTRUCTION	08/20/2024	BJ	BJ
23	ISSUED FOR CONSTRUCTION	08/20/2024	BJ	BJ
24	ISSUED FOR CONSTRUCTION	08/20/2024	BJ	BJ
25	ISSUED FOR CONSTRUCTION	08/20/2024	BJ	BJ
26	ISSUED FOR CONSTRUCTION	08/20/2024	BJ	BJ
27	ISSUED FOR CONSTRUCTION	08/20/2024	BJ	BJ
28	ISSUED FOR CONSTRUCTION	08/20/2024	BJ	BJ
29	ISSUED FOR CONSTRUCTION	08/20/2024	BJ	BJ
30	ISSUED FOR CONSTRUCTION	08/20/2024	BJ	BJ
31	ISSUED FOR CONSTRUCTION	08/20/2024	BJ	BJ
32	ISSUED FOR CONSTRUCTION	08/20/2024	BJ	BJ
33	ISSUED FOR CONSTRUCTION	08/20/2024	BJ	BJ
34	ISSUED FOR CONSTRUCTION	08/20/2024	BJ	BJ
35	ISSUED FOR CONSTRUCTION	08/20/2024	BJ	BJ
36	ISSUED FOR CONSTRUCTION	08/20/2024	BJ	BJ
37	ISSUED FOR CONSTRUCTION	08/20/2024	BJ	BJ
38	ISSUED FOR CONSTRUCTION	08/20/2024	BJ	BJ
39	ISSUED FOR CONSTRUCTION	08/20/2024	BJ	BJ
40	ISSUED FOR CONSTRUCTION	08/20/2024	BJ	BJ
41	ISSUED FOR CONSTRUCTION	08/20/2024	BJ	BJ
42	ISSUED FOR CONSTRUCTION	08/20/2024	BJ	BJ
43	ISSUED FOR CONSTRUCTION	08/20/2024	BJ	BJ
44	ISSUED FOR CONSTRUCTION	08/20/2024	BJ	BJ
45	ISSUED FOR CONSTRUCTION	08/20/2024	BJ	BJ
46	ISSUED FOR CONSTRUCTION	08/20/2024	BJ	BJ
47	ISSUED FOR CONSTRUCTION	08/20/2024	BJ	BJ
48	ISSUED FOR CONSTRUCTION	08/20/2024	BJ	BJ
49	ISSUED FOR CONSTRUCTION	08/20/2024	BJ	BJ
50	ISSUED FOR CONSTRUCTION	08/20/2024	BJ	BJ
51	ISSUED FOR CONSTRUCTION	08/20/2024	BJ	BJ
52	ISSUED FOR CONSTRUCTION	08/20/2024	BJ	BJ
53	ISSUED FOR CONSTRUCTION	08/20/2024	BJ	BJ
54	ISSUED FOR CONSTRUCTION	08/20/2024	BJ	BJ
55	ISSUED FOR CONSTRUCTION	08/20/2024	BJ	BJ
56	ISSUED FOR CONSTRUCTION	08/20/2024	BJ	BJ
57	ISSUED FOR CONSTRUCTION	08/20/2024	BJ	BJ
58	ISSUED FOR CONSTRUCTION	08/20/2024	BJ	BJ
59	ISSUED FOR CONSTRUCTION	08/20/2024	BJ	BJ
60	ISSUED FOR CONSTRUCTION	08/20/2024	BJ	BJ
61	ISSUED FOR CONSTRUCTION	08/20/2024	BJ	BJ
62	ISSUED FOR CONSTRUCTION	08/20/2024	BJ	BJ
63	ISSUED FOR CONSTRUCTION	08/20/2024	BJ	BJ
64	ISSUED FOR CONSTRUCTION	08/20/2024	BJ	BJ
65	ISSUED FOR CONSTRUCTION	08/20/2024	BJ	BJ
66	ISSUED FOR CONSTRUCTION	08/20/2024	BJ	BJ
67	ISSUED FOR CONSTRUCTION	08/20/2024	BJ	BJ
68	ISSUED FOR CONSTRUCTION	08/20/2024	BJ	BJ
69	ISSUED FOR CONSTRUCTION	08/20/2024	BJ	BJ
70	ISSUED FOR CONSTRUCTION	08/20/2024	BJ	BJ
71	ISSUED FOR CONSTRUCTION	08/20/2024	BJ	BJ
72	ISSUED FOR CONSTRUCTION	08/20/2024	BJ	BJ
73	ISSUED FOR CONSTRUCTION	08/20/2024	BJ	BJ
74	ISSUED FOR CONSTRUCTION	08/20/2024	BJ	BJ
75	ISSUED FOR CONSTRUCTION	08/20/2024	BJ	BJ
76	ISSUED FOR CONSTRUCTION	08/20/2024	BJ	BJ
77	ISSUED FOR CONSTRUCTION	08/20/2024	BJ	BJ
78	ISSUED FOR CONSTRUCTION	08/20/2024	BJ	BJ
79	ISSUED FOR CONSTRUCTION	08/20/2024	BJ	BJ
80	ISSUED FOR CONSTRUCTION	08/20/2024	BJ	BJ
81	ISSUED FOR CONSTRUCTION	08/20/2024	BJ	BJ
82	ISSUED FOR CONSTRUCTION	08/20/2024	BJ	BJ
83	ISSUED FOR CONSTRUCTION	08/20/2024	BJ	BJ
84	ISSUED FOR CONSTRUCTION	08/20/2024	BJ	BJ
85	ISSUED FOR CONSTRUCTION	08/20/2024	BJ	BJ
86	ISSUED FOR CONSTRUCTION	08/20/2024	BJ	BJ
87	ISSUED FOR CONSTRUCTION	08/20/2024	BJ	BJ
88	ISSUED FOR CONSTRUCTION	08/20/2024	BJ	BJ
89	ISSUED FOR CONSTRUCTION	08/20/2024	BJ	BJ
90	ISSUED FOR CONSTRUCTION	08/20/2024	BJ	BJ
91	ISSUED FOR CONSTRUCTION	08/20/2024	BJ	BJ
92	ISSUED FOR CONSTRUCTION	08/20/2024	BJ	BJ
93	ISSUED FOR CONSTRUCTION	08/20/2024	BJ	BJ
94	ISSUED FOR CONSTRUCTION	08/20/2024	BJ	BJ
95	ISSUED FOR CONSTRUCTION	08/20/2024	BJ	BJ
96	ISSUED FOR CONSTRUCTION	08/20/2024	BJ	BJ
97	ISSUED FOR CONSTRUCTION	08/20/2024	BJ	BJ
98	ISSUED FOR CONSTRUCTION	08/20/2024	BJ	BJ
99	ISSUED FOR CONSTRUCTION	08/20/2024	BJ	BJ
100	ISSUED FOR CONSTRUCTION	08/20/2024	BJ	BJ

CHITOLE  
HVAC PLAN

**M100**