

KEY NOTES
APPLICABLE TO THIS SHEET ONLY

① TYPICAL VOLUME DAMPER. REFER TO DETAIL 11M-004.

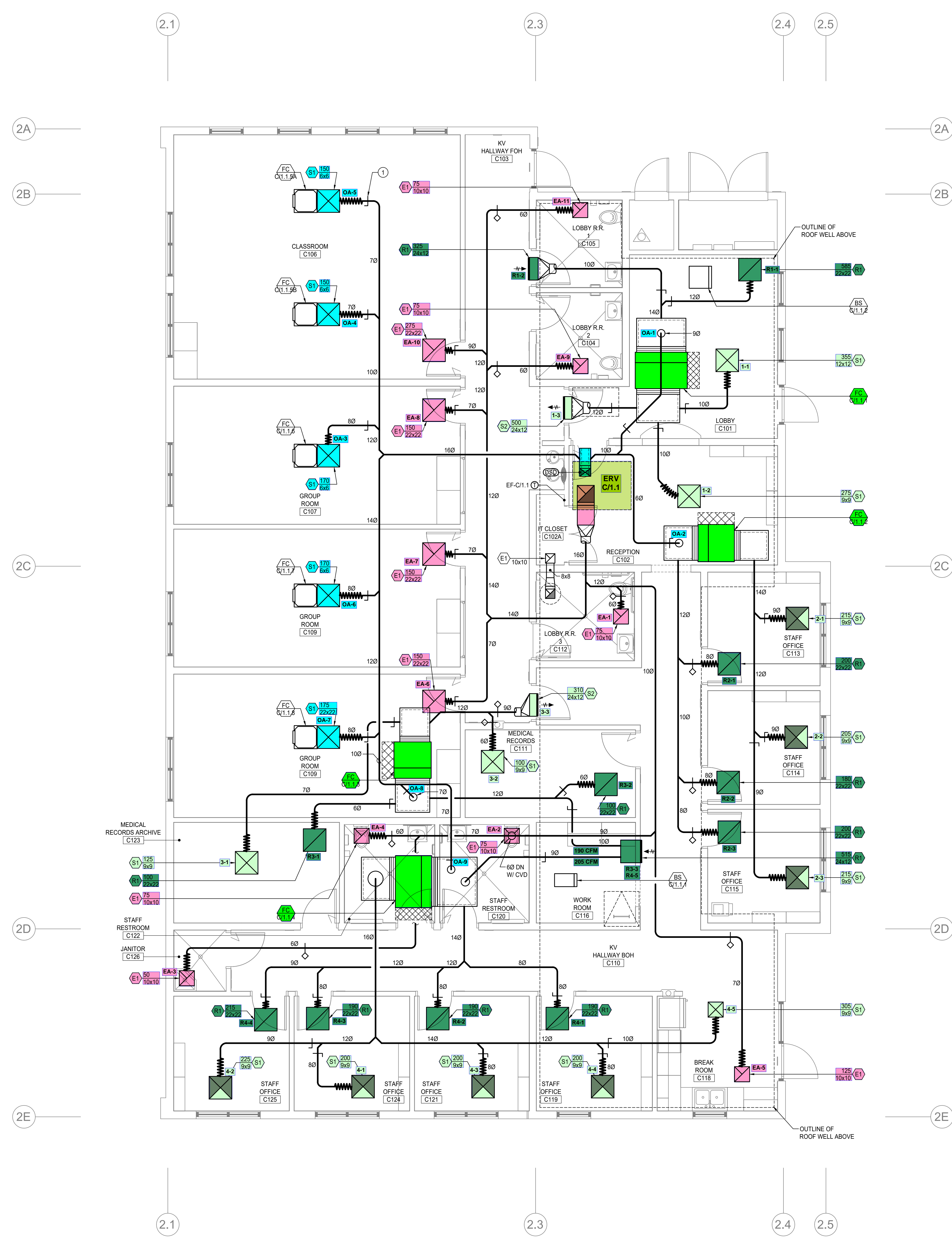
HVAC GENERAL NOTES
APPLICABLE TO THIS SHEET ONLY

1 VERIFY FINAL THERMOSTAT LOCATIONS WITH OWNER PRIOR TO INSTALLATION. IF OWNER INTENDS TO CHANGE LOCATION OF THERMOSTAT, CONTACT ENGINEER OF RECORD PRIOR TO FINALIZING LOCATION.

2 PROVIDE MANUAL VOLUME DAMPERS IN ALL BRANCH DUCTS TO AIR OUTLETS/INLETS. VOLUME DAMPERS ABOVE HARD LID CEILING TO BE CABLE OPERATED UNLESS NOTED OTHERWISE. CABLE TO BE ACCESSED THRU THE FACE OF GRILLE AFTER BALANCING TUCK CABLE INTO DIFFUSER SO THAT IT IS NOT VISIBLE.

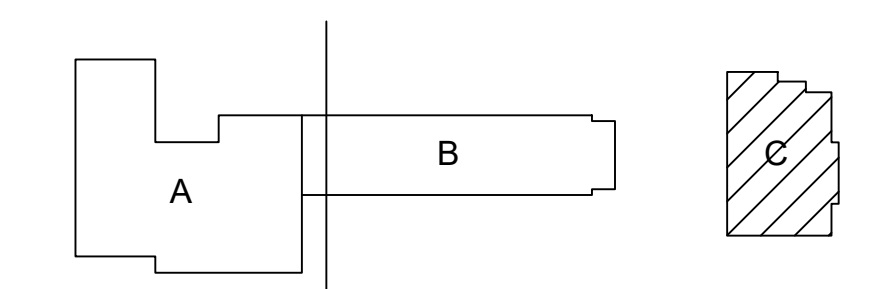
PASSIVE MAKE-UP AIR SCHEDULE

ROOM	DOOR LOUVER MINIMUM FREE AREA FT ²	DOOR UNDER CUT
LOBBY RR 1 C105	NA	1"
LOBBY RR 2 C104	NA	1"
IT CLOSET C102A	0.8	NA
LOBBY RR 3 C112	NA	1"
STAFF RR C120	NA	1"
STAFF RR C122	NA	1"
JANITOR C126	NA	1"



1 BUILDING C - MECHANICAL GROUND FLOOR PLAN

KEY PLAN



SCALE: 1/4" = 1'-0"

CONFORMING SET

CONSTRUCTION DOCUMENTS

NO.	REVISION	DATE
△	BID SET	8/09/23
△		
△		
△		
△		

PROJECT MANAGER	
DS	
DRAWN BY	CHECKED BY
NOM	BS
DATE	
11 NOVEMBER 2022	
PROJECT NUMBER	
2366-01-C121	
SHEET	
M2-101	

