

GOVERNMENTAL AGENCIES

BUILDING DEPARTMENT
City of Menifee Building Department
29844 Haun Road
Menifee, CA 92586
Phone: 951-723-3886
Contact Name: Daniel Padilla
Contact Email: dpadilla@cityofmenifee.us

FIRE DEPARTMENT
City of Menifee Fire Department
29844 Haun Road
Menifee, CA 92586
Phone: 951-723-3732
Contact Name: Service Rivera
Contact Email: Brivera@cityofmenifee.us

HEALTH DEPARTMENT
Riverside Health Department
800 S. Sanderson, 2nd floor
Hemet, CA 92545
Phone: 951-766-2824
Contact Name: Jeff Lojeski
Contact Email: jlojeski@riverco.org

BUILDING DATA

BUILDING CODE:
2022 California Building Code

PLUMBING CODE:
2022 California Plumbing Code

MECHANICAL CODE:
2022 California Mechanical Code

ELECTRICAL CODE:
2022 California Electrical Code

FIRE CODE:
2022 California Energy Code

GREEN CODE:
2022 California Green Code

ENERGY CODE:
2022 California Energy Code

NOTE:
See G-005 for Accessibility notes,
G-006 Life Safety Plan & Code
summary

CODE SUMMARY:

- 1. APN: 070-320-004-000
2. CONSTRUCTION TYPE: VB
3. BUILDING AREA: 8,054 S.F.
A. ACTUAL BUILDING AREA: 2,792 S.F.
B. CANOPY AREA: 5,262 S.F.
4. OCCUPANCY LOAD: 13
5. SPRINKLERED: NO
6. PLUMBING FIXTURES: SEE G-006
7. PARKING: SEE A100

SCOPE OF WORK:

- 1. NEW 2,792 SQ. FT. FREE STANDING DRIVE-THRU RESTAURANT, KITCHEN AREA, SERVING AREA, RESTROOMS AND 64 SEATS OF OUTSIDE PATIO DINING AREA.
2. NEW OUTSIDE MEAL DELIVERY CANOPY AND ORDER POINT CANOPY.
3. NEW TRASH ENCLOSURE AREA
4. SITE AND LANDSCAPE IMPROVEMENTS WITH 64 SEAT PATIO AREA.

DEFERRED SUBMITTALS:

- 1. VAPOR MIDIGATION SYSTEM
2. SIGN PLANS
3. TRUSS SHOP DRAWINGS
4. KITCHEN AUTOMATIC EXTINGUISHING SYSTEM
5. KITCHEN HOOD SUPPRESSION SYSTEM AND ANSUL SYSTEM
6. WALK-IN COOLER & FREEZER ANCHORAGE AND CALCULATIONS



05110
P13 DTO SQ

I-5 & BONNYVIEW RD

4086 S. BONNYVIEW RD.
REDDING, CA 96001



*NOTE: REVISION SCHEDULE ABOVE MAY NOT LIST REVISIONS TO ALL DISCIPLINES. REFER TO REVISED DRAWINGS FOR CHANGES TO SHEETS NOT LISTED HERE.

ARCHITECT

C.R.H.O.
1833 E. 17th Street,
Ste. 301
Santa Ana, CA 92705
Phone: (714) 832-1834
Contact: Ashley Liu
Email: Ashley@crho.com

CIVIL

TRUXAW & ASSOC. INC.
1915 W. Orangewood Ave.
Suite 101
Orange, CA 92868
Phone: (714) 935-0265
Contact: Matthew Ersek
Email: Mattersek@truxaw.com

LANDSCAPE

JOHN HOURIAN & ASSOC.
414 Olive Street #227
Santa Barbara, CA 93105
Phone: (949)489-5623
Fax: (949) 489-5632
Contact: John Hourian
Email: Team@hourianassociates.com

STRUCTURAL

SHIMAJI & LASCOLA
23682 Birtcher Drive
Lake Forest, CA 92630
Phone: (949) 770-9967
Fax: (949)770-9542 x103
Contact: Jim Lascola
Email: Jim@slj-se.com

MECHANICAL

KUSHNER-VARKER ASSOC., INC.
33760 Willow Haven Lane Unit 105
Murrieta, CA 92563
Phone: (951) 226-0153
Contact: Mike Pluta
Email: Mike@kva-inc.org

PLUMBING

KUSHNER-VARKER ASSOC., INC.
33760 Willow Haven Lane Unit 105
Murrieta, CA 92563
Phone: (951) 226-0153
Contact: Mike Pluta
Email: Mike@kva-inc.org

KITCHEN

TRIMARK STRATEGIC
3800 Camp Creek Pkwy SW
Bldg. 2400, Suite 114
Atlanta, GA 30331
Phone: (949) 236-1615
Contact: Alex Wolfe
Email: Alex.Wolfe@trimarkusa.com

ELECTRICAL

OMB ELECTRICAL ENGINEER, INC.
8825 Research Drive
Irvine, CA 92618
Phone: (949) 753-1553
Contact: Martin Gilchrist
Email: Martin.gilchrist@salasobrien.com

DESIGNOTES APPLIED IN CURRENT PROJECT

Table with columns: DESIGNOTE #, REV #, DESCRIPTION, Description, Type, Comments. Lists various design notes such as 'NEW ELECTRICAL PANEL DS', 'BRICK SUPPLIER REGIONAL STRATEGY', etc.

ITEMS OF IMPORTANCE

Table with columns: INCLUDED IN PROJECT, ITEM NUMBER, ITEM DESCRIPTION. Shows item 1 as 'ITEMS OF IMPORTANCE'.

SHEET INDEX

SHEET INDEX table listing sheets G-000 to A-503 with columns for SHEET NUMBER, SHEET NAME, and construction status.

SHEET INDEX

SHEET INDEX table listing sheets A-504 to S-902 with columns for SHEET NUMBER, SHEET NAME, and construction status.

SHEET INDEX

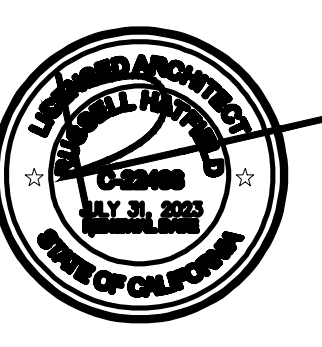
SHEET INDEX table listing sheets M-603 to K-601 with columns for SHEET NUMBER, SHEET NAME, and construction status.

SHEET INDEX

SHEET INDEX table listing sheets K-602 to OP_LL 10F1 with columns for SHEET NUMBER, SHEET NAME, and construction status.



Chick-fil-A
5200 Buffington Road
Atlanta, Georgia
30349-2998



CHICK-FIL-A
I-5 & BONNYVIEW RD
4086 S. BONNYVIEW RD.
REDDING, CA 96001

FSR#05110

BUILDING TYPE / SIZE: P13 DTO SQ
RELEASE: 22.05
PRINTED FOR: FOR BID

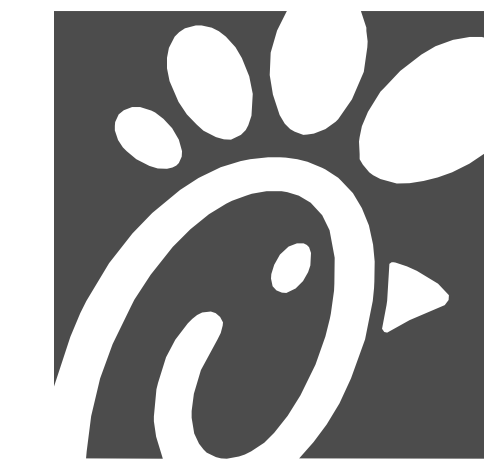
REVISION SCHEDULE
NO. DATE DESCRIPTION
1 5/30/23 AGENCY REVISIONS

CONSULTANT PROJECT # 22-166
DATE 10/24/22

DRAWN BY: jC
Information contained on this drawing and all digital files produced for above named project may not be reproduced or transmitted in any form or by any means without express written or verbal consent from authorizing project representatives.

COVER SHEET
SHEET NUMBER G-000

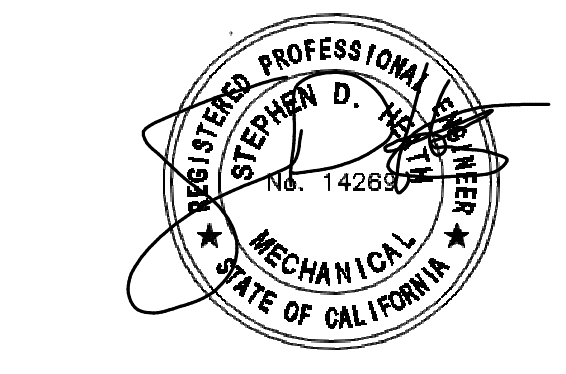
6/29/2023 12:49:03 PM Autodesk Docs://CA_05110_I-5 & Bonnyview Rd_2022.6.DTO.05110_I-5 & Bonnyview Rd_ARC.rvt
05-DTO-05110-G-000-COVER SHEET



Chick-fil-A
 5200 Buffington Road
 Atlanta, Georgia
 30349-2998



KVA
 KUSHNER-VARKER ASSOCIATES INC.
 MECHANICAL ENGINEERS
 33760 WILLOW HAVEN LANE UNIT#105
 MURRIETA, CA 92563
 OFFICE PHONE: (951) 226-0140



CHICK-FIL-A
I-5 & BONNYVIEW RD
 NWC I-5 @ BONNYVIEW RD
 REDDING, CA 96001

FSR#05110
 BUILDING TYPE / SIZE: P13 DTO ALL
 RELEASE: 22.05

REVISION SCHEDULE

| NO. | DATE | DESCRIPTION |
|-----|------|-------------|
| | | |

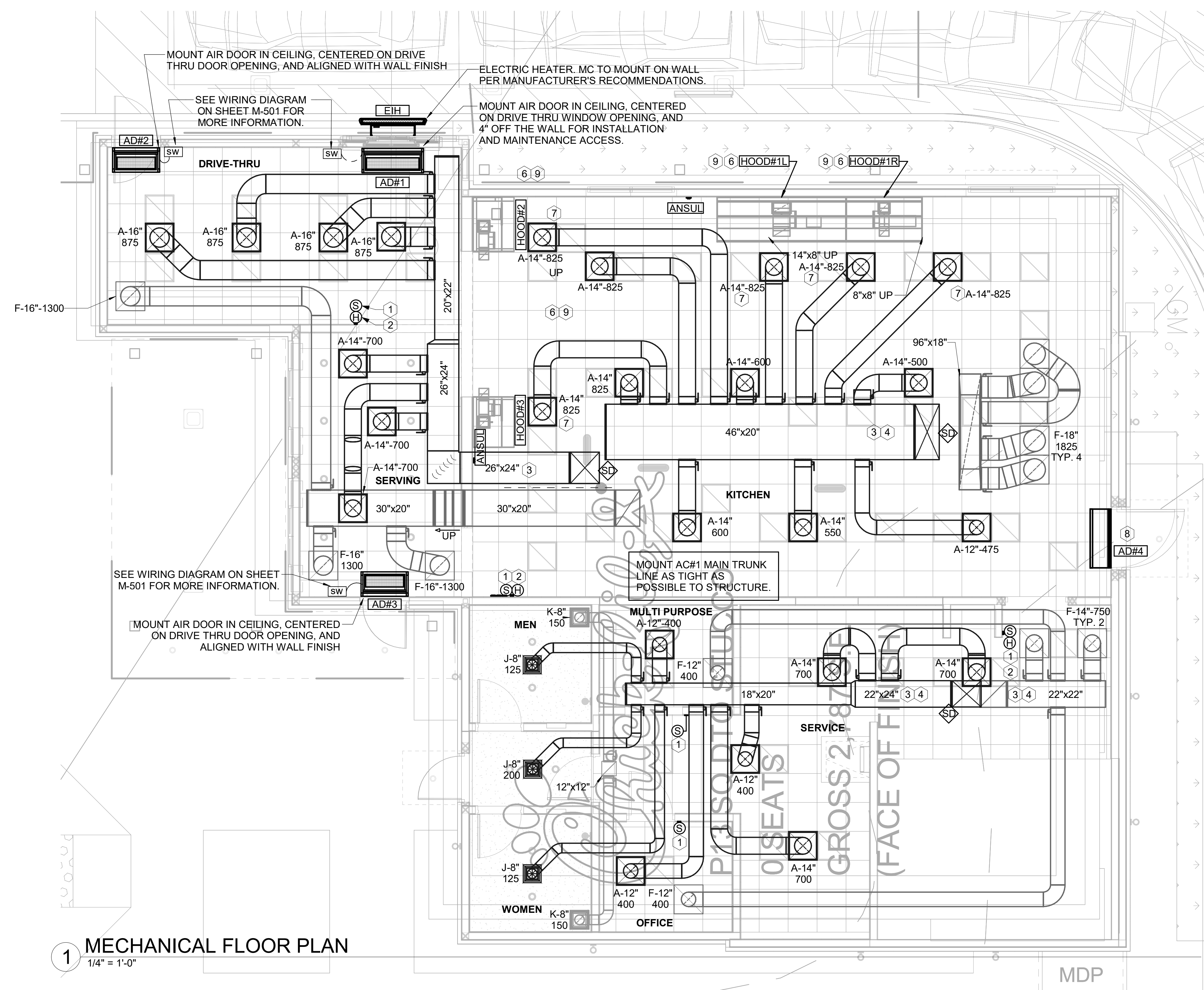
PERMIT

| CONSULTANT PROJECT # | 22-166 |
|----------------------|----------|
| PRINTED FOR | PERMIT |
| DATE | 05/30/23 |
| DRAWN BY | MPP |

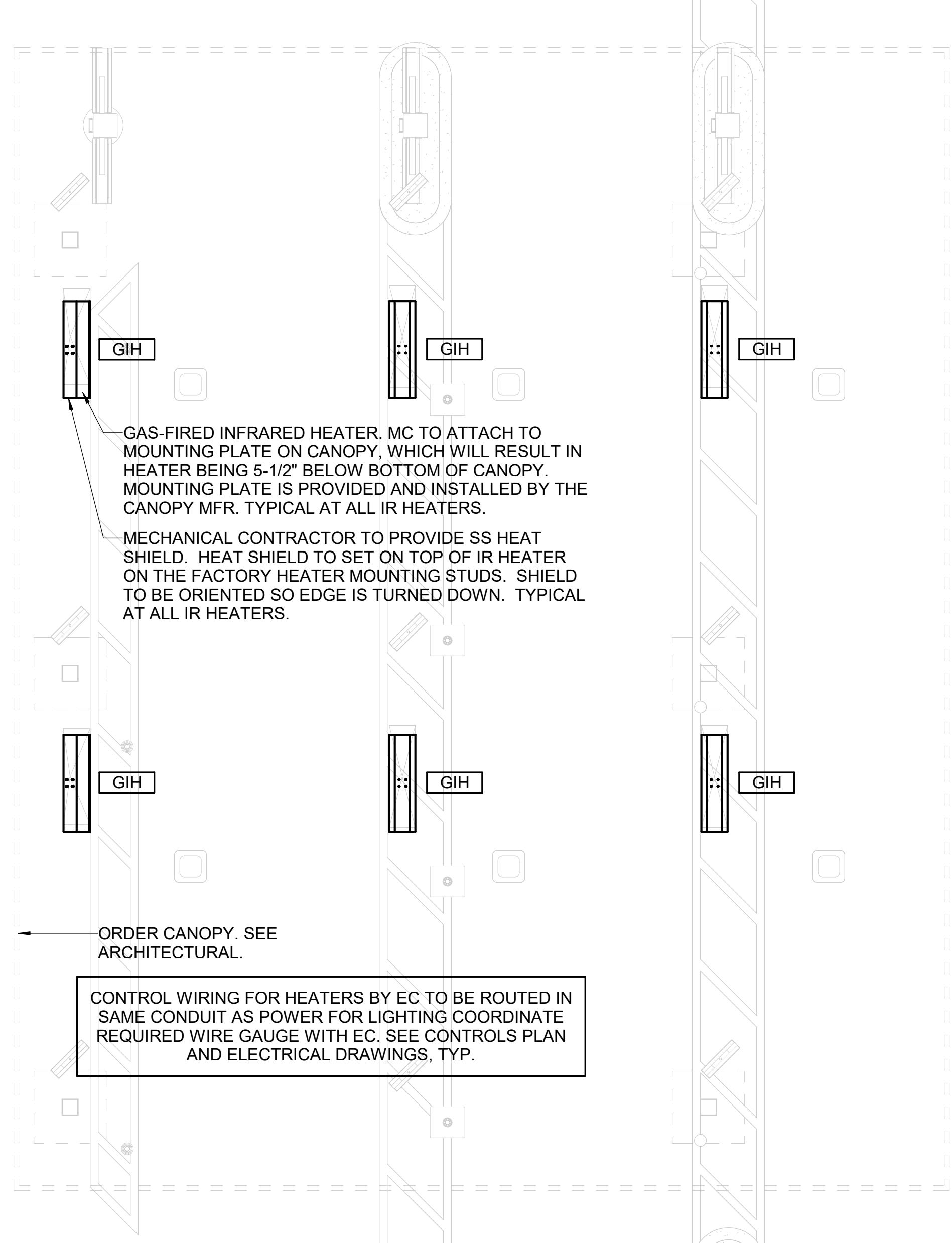
Information contained on this drawing and in all digital files produced for above named project may not be reproduced in any manner without express written or verbal consent from authorized project representatives.

SHEET: MECHANICAL FLOOR PLAN

SHEET NUMBER: M-201



1 MECHANICAL FLOOR PLAN
 1/4" = 1'-0"



2 MECHANICAL FLOOR PLAN
 1/4" = 1'-0"

CANOPY GENERAL NOTES

- COORDINATE NEW WORK WITH EXISTING CONDUIT, STRUCTURE, AND PIPING. FIELD VERIFY EXISTING CONDITIONS PRIOR TO START OF WORK.
- COORDINATE LOCATION AND RESPONSIBILITIES FOR UNDERGROUND PIPING AND ASSOCIATED TRENCHING WITH GENERAL CONTRACTOR PRIOR TO START OF WORK.
- EXPOSED GAS PIPING SHALL BE PAINTED BY GENERAL CONTRACTOR.
- ACTUAL NUMBER OF GAS INFRARED HEATERS WILL BE DETERMINED BY SITE-SPECIFIC CANOPY LAYOUT AND EQUIPMENT LOCATIONS, AS INDICATED ON ARCHITECTURAL PLANS.
- CONTROL WIRING FOR HEATERS BY EC. COORDINATE REQUIRED WIRE GAUGE WITH EC. SEE CONTROLS PLAN AND ELECTRICAL DRAWINGS, TYP.

SHEET NOTES

- DUCT SIZES SERVING DIFFUSERS AND GRILLES ARE SAME SIZE AS DIFFUSER OR GRILLE NECK UNLESS NOTED OTHERWISE.
- FLEXIBLE DUCT NOT SHOWN FOR CLARITY. ALL TAKE-OFFS SHALL INCLUDE FLEXIBLE DUCT. SEE DETAIL 1/M-401 FOR FLEXIBLE DUCT INSTALLATION REQUIREMENTS.
- FOR SUPPLY AND RETURN OPENINGS, CUT OPENING AROUND DUCT DROPS 4" TO 8" MINIMUM (EXCEPT WHERE STRUCTURE PREVENTS THIS). SEE ARCHITECTURAL AND STRUCTURAL DRAWINGS.
- AT EACH PIECE OF ROOF EQUIPMENT, PROVIDE A PLASTIC ENGRAVED LABEL WITH 1" HIGH WHITE LETTERS ON A BLACK BACKGROUND. THE LABEL IS TO HAVE A SELF ADHESIVE BACKING.
- UNLESS NOTED OTHERWISE, MC TO ADJUST ALL DIFFUSER AIR PATTERN DEFLECTORS TO THROW HORIZONTALLY ALONG THE CEILING.
- SUPPORT ALL DUCT DROPS AT BASE OF DROP FROM STRUCTURE.

GC SCHEDULE INSPECTIONS WITH CFA HVAC INSPECTION CO.FOR PRE-GRID & TAB.

KEY NOTES

- MOUNT REMOTE SENSOR ON WALL AT 5'-0" AFF U.N.O. AND ROUTE WIRING BACK TO SUNCOAST TEMP CONTROL PANEL. FOR SENSOR SERVING AC#1, COORDINATE EXACT LOCATION WITH KITCHEN EQUIPMENT.
- MOUNT LENNOX HUMIDITY SENSOR ON WALL ABOVE SPACE TEMP SENSOR AND ROUTE WIRING TO UNIT ON ROOF.
- BRANCH TAKE-OFFS ARE NOT TO BE LOCATED CLOSER THAN 3'-0" FROM ANY OFFSET OR ELBOW INCLUDING THE SUPPLY AIR DROP FROM CURB.
- TRANSITION IN VERTICAL DROP FROM FULL SIZE OF CURB OPENING TO SIZE SHOWN. TRANSITION WITHIN CURB WHERE REQUIRED TO AVOID STRUCTURE. WHERE THE DUCT IS SHOWN OFFSET HORIZONTALLY, PROVIDE ELBOW WITH TURNING VANES. FOR DROPS WITH NO HORIZONTAL OFFSET, EXTEND DROP BELOW STRUCTURE TO ACCOMMODATE START COLLARS. TERMINATE DROP A MINIMUM 0'-10" ABOVE CEILING IF REQUIRED TO ACCOMMODATE TAKE-OFF AND DROP IS NOT LOCATED DIRECTLY ABOVE A LIGHT).
- TRANSITION IN VERTICAL DROP FROM FULL SIZE OF CURB OPENING TO SIZE SHOWN. SEE DETAIL 6/M-401 FOR REQUIRED TRANSITION GEOMETRY. TRANSITION WITHIN CURB WHERE REQUIRED TO AVOID STRUCTURE. WHERE THE DUCT IS SHOWN OFFSET HORIZONTALLY, PROVIDE ELBOW WITHOUT TURNING VANES. FOR DROPS WITH NO HORIZONTAL OFFSET, EXTEND DROP BELOW STRUCTURE TO ACCOMMODATE START COLLARS. TERMINATE DROP A MINIMUM 0'-10" ABOVE CEILING (0'-4" ABOVE CEILING IF REQUIRED TO ACCOMMODATE TAKE-OFF AND DROP IS NOT LOCATED DIRECTLY ABOVE A LIGHT).
- SEE ELEVATIONS ON M-301 FOR CJ FAN DUCTING REQUIREMENTS.
- MECHANICAL CONTRACTOR TO ADJUST PATTERN DEFLECTORS TO THROW STRAIGHT DOWN.
- AIR CURTAIN MOUNTED OVER DOOR HEADER AT 7'-2" AFF TO BOTTOM OF UNIT. PROVIDE BLOCKING IN WALL BEHIND AIR CURTAIN. USE FACTORY PRE-PUNCHED MOUNTING HOLES ON BACK SIDE OF AIR CURTAIN ONLY. ATTACH AIR CURTAIN TO WALL USING 3/8" LAG BOLTS. LENGTH AS REQUIRED TO FULLY PENETRATE BLOCKING. LOCATE MAGNETIC CONTACT TYPE MICROSWITCH IN DOOR FRAME ON STRIKE SIDE.
- HALTON KBD DAMPER AT HOOD COLLAR BY MECHANICAL CONTRACTOR. SEE HOOD ELEVATIONS ON M-301 FOR LOCATION.

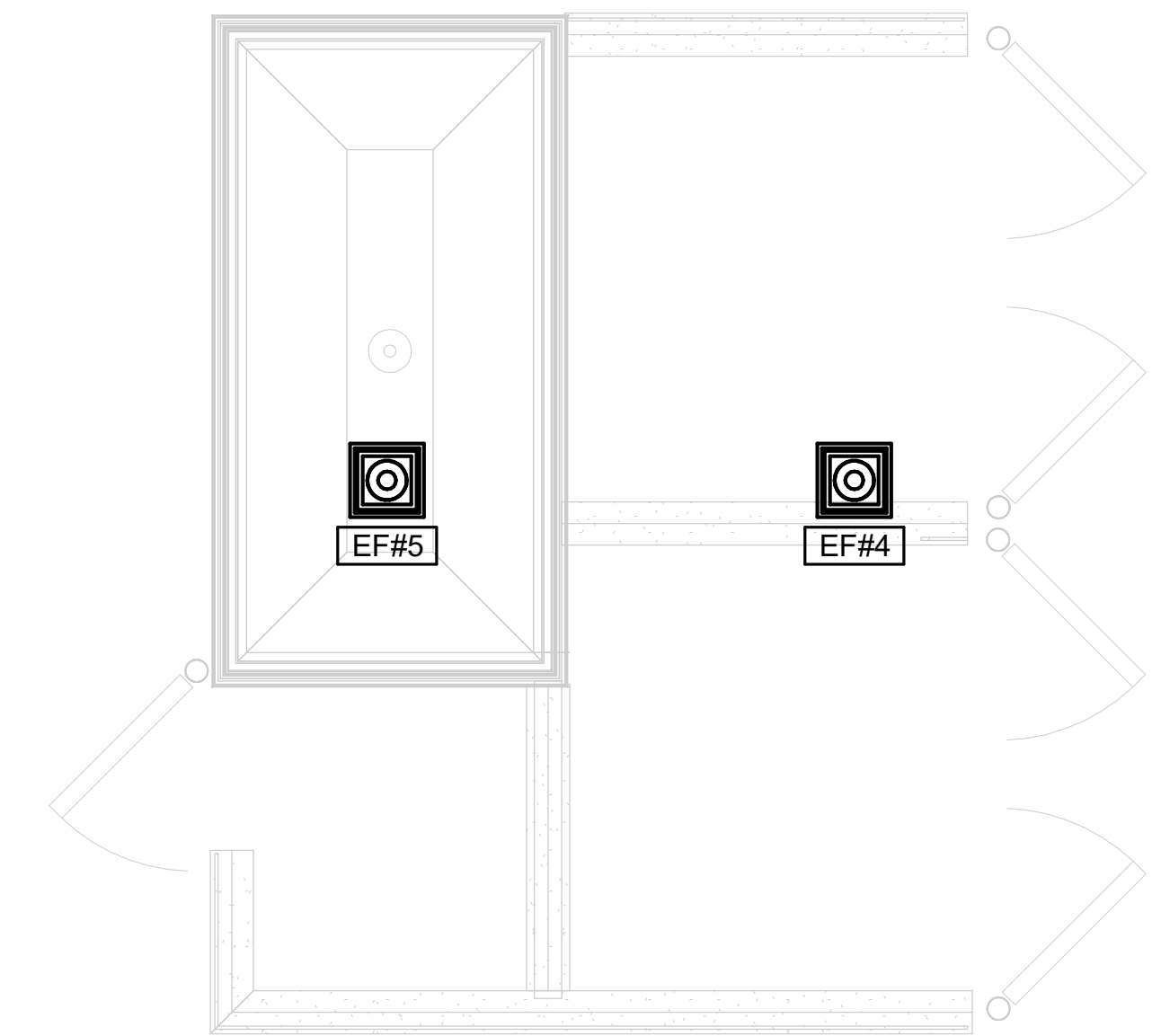
LEGEND

| Symbol | DESCRIPTION | Symbol | DESCRIPTION |
|----------|---|----------|---------------------------------|
| A-12-400 | TYPE - NECK SIZE - CFM | EF#1 | EXHAUST FAN #1 (TYP.) |
| [Symbol] | SPIN-IN FITTING WITH MANUAL BALANCING DAMPER, WITHOUT SCOOP | AC#1 | AIR CONDITIONING UNIT #1 (TYP.) |
| [Symbol] | SPIN-IN HARD FLEXIBLE DIFFUSER | [Symbol] | RETURN/EXHAUST (TYP.) |
| (S) | REMOTE TEMPERATURE SENSOR | [Symbol] | SUPPLY DIFFUSER, SQ FACE (TYP.) |
| (H) | HUMIDITY SENSOR | (1) | PLAN NOTE REFERENCE |
| [Symbol] | SMOKE DETECTOR | [Symbol] | MANUAL VOLUME DAMPER |
| 12x18 | DUCT SIZE (reverse for elevation views) 1ST NUMBER - HORIZONTAL DIMENSION 2ND NUMBER - VERTICAL DIMENSION | [Symbol] | DIRECTION OF THROW ON DIFFUSER |
| [SW] | AIR DOOR SWITCH | [Symbol] | CLOSED AIR PATTERN DEFLECTOR |
| EC | ELECTRICAL CONTRACTOR | GIH | GAS INFRARED HEATER (TYP.) |
| MC | MECHANICAL CONTRACTOR | B/G | BELOW GRADE |
| EIH | ELECTRIC INFRARED HEATER | (T) | THERMOSTAT |

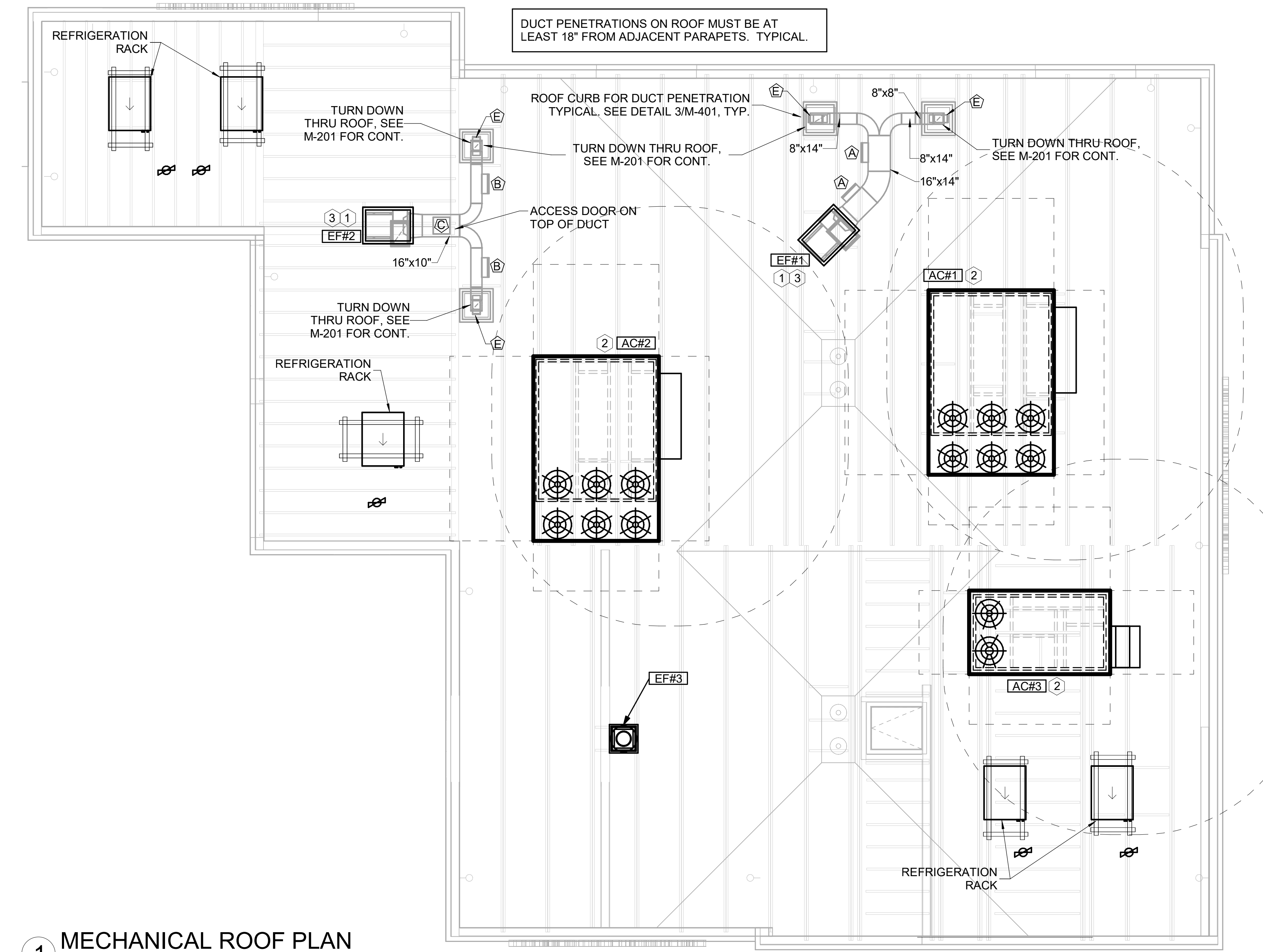
AIR BALANCE SCHEDULE

| Mark | SUPPLY AIR | RETURN AIR | OUTSIDE AIR | EXHAUST AIR | BUILDING POSITIVE PRESSURE |
|------|------------|------------|-------------|-------------|----------------------------|
| AC#1 | 8500 | 7300 | 1200 | | |
| AC#2 | 5600 | 3900 | 1700 | | |
| AC#3 | 3750 | 2325 | 1425 | | |
| EF#1 | | | | 1913 | |
| EF#2 | | | | 1402 | |
| EF#3 | | | | 300 | |
| EF#4 | | | | 117 | |
| EF#5 | | | | 117 | |
| | 17850 | 13525 | 4325 | 3849 | 476 |

2 TRASH ENCLOSURE ROOF PLAN
1/4" = 1'-0"



1 MECHANICAL ROOF PLAN
1/4" = 1'-0"



GREASE ACCESS DOOR SCHEDULE

| MARK | OPENING SIZE | DOOR SIZE | REMARKS |
|------|--------------|------------|---------|
| A | 9H X 14W | 11H X 16W | 1 |
| B | 5.5H X 14W | 7.5H X 16W | 1 |
| C | 12H X 12W | 14H X 14W | 1 |
| D | 10H X 14W | 12H X 16W | 1 |
| E | 6H X 14W | 8H X 16W | 1 |

1. ACCESS DOORS SHALL BE U.L. 1978 LISTED OR FIELD FABRICATED. REQUIRE NO TOOLS FOR REMOVAL AND MEET THE REQUIREMENTS OF THE CURRENT EDITION OF THE IMC. ACCESS DOOR ASSEMBLY SHALL BE WELDED IN PLACE TO THE GREASE EXHAUST DUCT AND THE ACCESS DOOR SHALL BE SECURED WITH THUMB SCREWS. ACCESS DOORS SHALL BE SEALED WITH A MINIMUM 1500 DEGREE GASKET MATERIAL EQUIVALENT TO THAT MANUFACTURED BY BRENTON INDUSTRIES, INC (800) 362-2491.

SEE FYREWRAPISTALLATION INSTRUCTIONS FOR ADDITIONAL INFORMATION ON CONFIGURING INSULATION OVER AN ACCESS DOOR.

WELDED THREADED ROD, LENGTH AS NEEDED.

MIN. 1500 DEGREE GASKET

ACCESS DOOR

OUTER PLATE TO COMPLETELY COVER THE FINAL LAYER OF INSULATION.

GREASE ACCESS DOOR

LABEL DOOR AS REQUIRED BY CODE.

WING NUTS

1-1/4" MAX STAND-OFF FLANGE

TUBE SPACERS FOR WRAP TO BE EITHER 3" OR 4-1/2" LONG DEPENDING ON WHETHER A ONE LAYER OR TWO LAYER SYSTEM IS USED.

TUBE SPACERS AND OUTER PLATE NOT REQUIRED ON UNINSULATED DUCT.

KEY NOTES

- FABRICATE DISCHARGE AIR NOZZLE. VERIFY EXHAUST TERMINATION IS A MINIMUM 10'-0" FROM PARAPETS AND OUTSIDE AIR INTAKES. SEE DETAIL 3/M-401.
- MECHANICAL CONTRACTOR TO SEE ARCHITECTURAL ROOF PLAN FOR NOTES REGARDING LEVELING FRAMES FOR RTJUS. COORDINATE WITH GENERAL CONTRACTOR EXACT LOCATIONS AND SIZE NEEDED.
- GREASE EXHAUST DUCT LOCATED ON ROOF SHALL SLOPE 1/4" PER FOOT TOWARDS THE HOOD, THE FAN, OR A COMBINATION OF THE TWO SUCH THAT NO PORTION OF THE RADIUS ELBOW AT THE CURB IS BELOW THE CURB CAP AND SUCH THAT THE FAN BASE SETS DIRECTLY ON THE CURB RAILS. THE BOTTOM OF THE RADIUS ELBOW MAY BE EVEN OR FLUSH WITH THE CURB CAP, BUT NOT BELOW THE CAP. THE DUCT AT THE FAN MUST BE CENTERED ON THE FAN INLET. THE MC MAY ADD A VERTICAL RISER AT THE RADIUS ELBOW LOCATED AT THE DUCT CURB AS NEEDED IN ORDER TO CENTER THE DUCT ON THE FAN INLET.

SHEET NOTES

- ALL DUCTWORK AND UNFINISHED METAL ON ROOF EXCEPT STAINLESS SHALL BE PREPARED WITH TWO COATS OF SHERWIN WILLIAMS PRO INDUSTRIAL DTM ACRYLIC COATING, SEMI-GLOSS, WHITE. DEGREASE AND PRIME BARE METAL SURFACE WITH ONE COAT OF SHERWIN WILLIAMS PRO INDUSTRIAL PRO-CRYL ACRYLIC UNIVERSAL PRIMER, WHITE, PRIOR TO PAINTING.
- AT EACH PIECE OF ROOF EQUIPMENT, PROVIDE A PLASTIC ENGRAVED LABEL WITH 1" HIGH WHITE LETTERS ON A BLACK BACKGROUND. THE LABEL IS TO HAVE A SELF ADHESIVE BACKING.
- MAINTAIN 18" CLEARANCE FROM GREASE EXHAUST DUCTWORK ABOVE ROOF TO ANY COMBUSTIBLE CONSTRUCTION INCLUDING PARAPET WALLS.

Chick-fil-A
5200 Buffington Road
Atlanta, Georgia
30349-2998

KVA
KUSHNER-VARKER ASSOCIATES INC.
MECHANICAL ENGINEERS
33760 WILLOW HAVEN LANE UNIT#105
MURRETA, CA 92563
OFFICE PHONE: (951) 226-0140



CHICK-FIL-A
I-5 & BONNYVIEW RD
NWC I-5 @ BONNYVIEW RD
REDDING, CA 96001

FSR#05110
BUILDING TYPE / SIZE: P13 DTO ALL
RELEASE: 22.05

REVISION SCHEDULE

| NO. | DATE | DESCRIPTION |
|-----|------|-------------|
| | | |

| | |
|----------------------|----------|
| CONSULTANT PROJECT # | 22-166 |
| PRINTED FOR | PERMIT |
| DATE | 05/30/23 |
| DRAWN BY | MPP |

Information contained on this drawing and in all digital files produced for above named project may not be reproduced in any manner without express written or verbal consent from authorized project representatives.

SHEET
MECHANICAL ROOF PLAN

SHEET NUMBER
M-250

GREASE EXHAUST DUCT CLEARANCE NOTE:
 CLEARANCES ABOVE CEILING ARE TIGHT. MECHANICAL CONTRACTOR TO FIELD VERIFY EXACT ROUTING AND CLEARANCES PRIOR TO FABRICATING GREASE EXHAUST DUCT.

CLEANOUT DOOR NOTE:
 DUCT WRAP SHALL BE APPLIED TO THE CLEANOUT DOOR PER THE WRAP MFR'S INSTALLATION INSTRUCTIONS, NO EXCEPTIONS. ALSO, THE CLEANOUT DOOR MUST BE REMOVABLE WITHOUT TOOLS AND MUST BE CLEARLY AND PERMANENTLY LABELED.

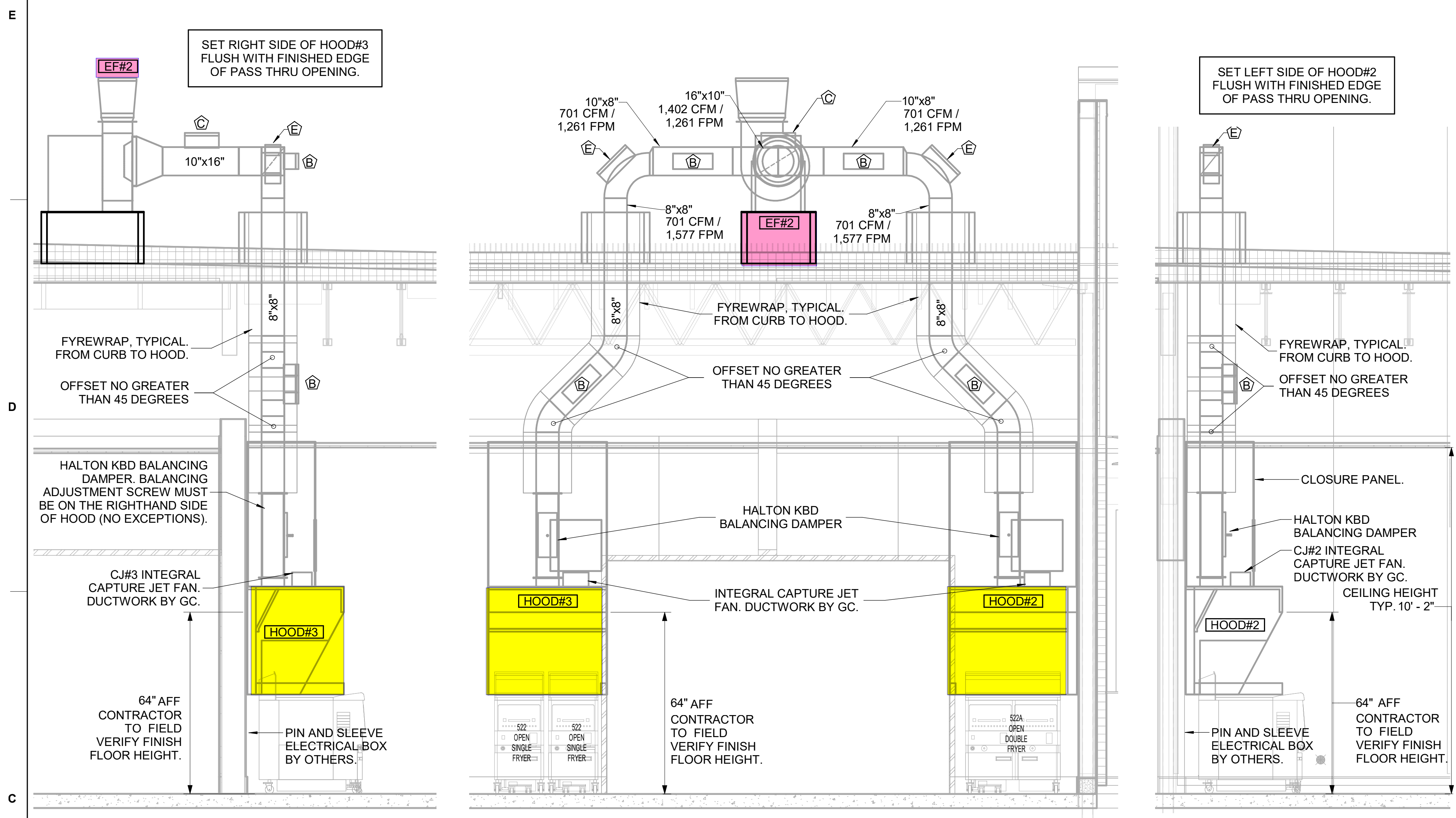
| HALTON HOOD SCHEDULE | | | | | | | | | | | |
|----------------------|-------------|---------------|------------------------|-----------|-------------|-------|-------|--------|---------|---|--|
| MARK | EXHAUST CFM | SP @ TAB PORT | CAPTURE JET CFM & S.P. | TYPE | COLLAR SIZE | WIDTH | DEPTH | HEIGHT | MODEL | REMARKS | |
| HOOD#1L | 1204 | 0.13" | 80 @ 0.30" | BACKSHELF | 14"x8" | 107" | 37" | 38" | KVL-2IC | 1, 2, 3, 4, 5, 7, 8, 9, 12, 16, 21, 23 | |
| HOOD#1R | 709 | 0.13" | 47 @ 0.30" | BACKSHELF | 8"x8" | 63" | 37" | 38" | KVL-2IC | 1, 2, 3, 5, 7, 8, 9, 12, 20, 21, 22 | |
| HOOD#2 | 701 | .30" | 30 @ 0.29" | BACKSHELF | 8"x8" | 42" | 34" | 38" | KVL-C | 1, 2, 3, 6, 7, 8, 9, 12, 13, 15, 16, 18, 21 | |
| HOOD#3 | 701 | .30" | 30 @ 0.29" | BACKSHELF | 8"x8" | 42" | 34" | 38" | KVL-C | 1, 2, 3, 4, 6, 7, 8, 10, 12, 14, 17, 21 | |

NOTES: DIMENSIONS OF HOODS INCLUDE BACK AND SIDE SPACERS (HEIGHT DOES NOT INCLUDE CLOSURE PANELS).

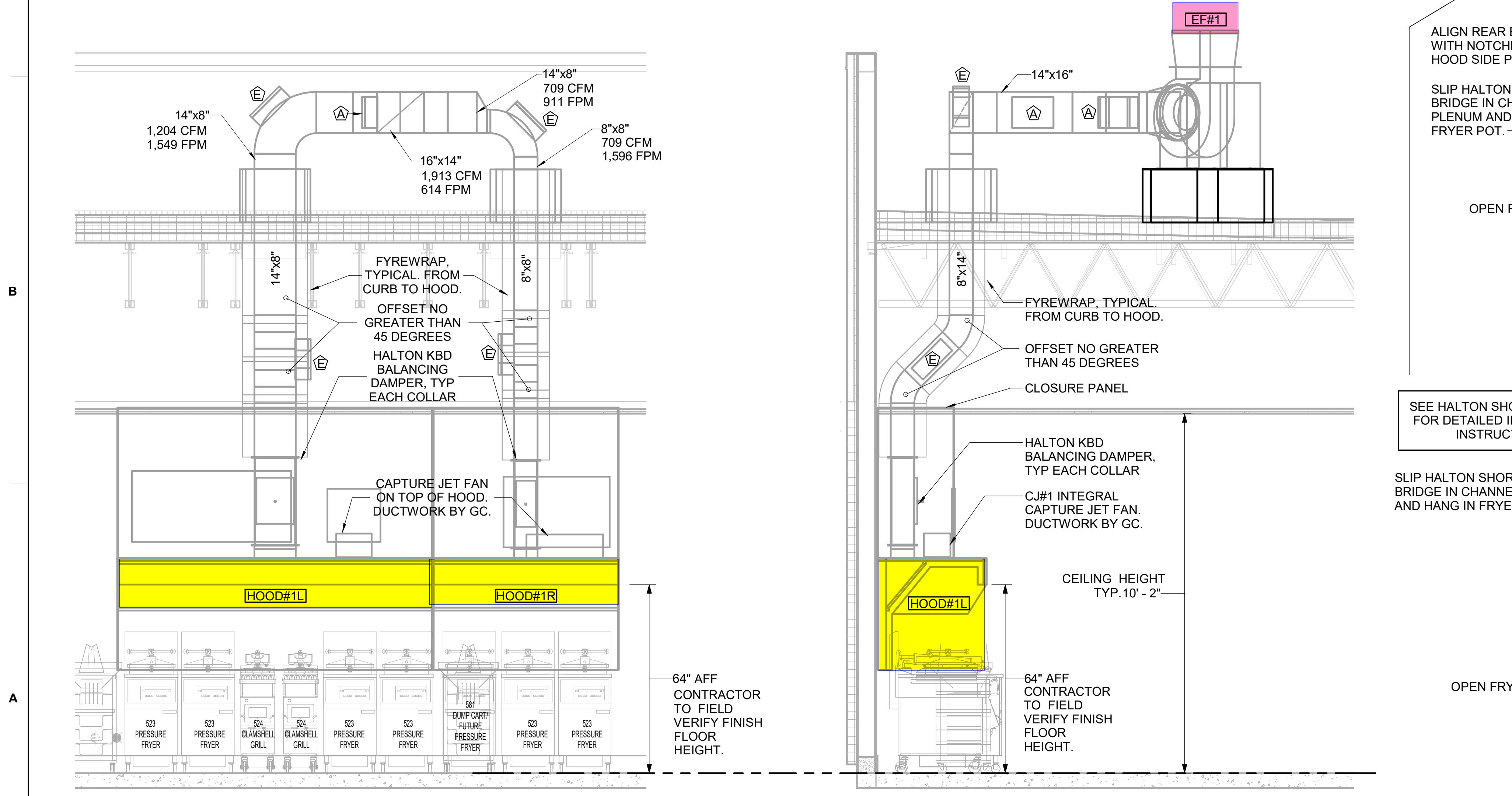
REMARKS:

1. STAINLESS STEEL CONSTRUCTION.
2. PROVIDE FULL HEIGHT S.S. CLOSURE PANEL WITH ACCESS PANEL IN FRONT LARGE ENOUGH TO REMOVE CAPTURE JET FAN, SERVICE ANSUL COMPONENTS, AND/OR TO ACCESS KBD EQUALIZER JACK SCREW.
3. PROVIDE PRE-PIPED ANSUL R-102 WET FIRE EXTINGUISHING SYSTEM.
4. ANSUL CABINET AND COMPONENTS ABOVE HOOD ON LEFT SIDE.
5. PROVIDE 3" ZERO CLEARANCE TO COMBUSTIBLE BACK SPACER.
6. PROVIDE 3" ZERO CLEARANCE TO COMBUSTIBLE CUSTOM BACK SPACER TO ACCOMMODATE PIN AND SLEEVE ELECTRICAL BOX.
7. PROVIDE EQUIPMENT I.D. LABELS LOCATED ON FRONT LEADING EDGE OF HOOD.
8. PROVIDE FACTORY WALL MOUNTING ANGLE AT TOP OF HOOD.
9. PROVIDE TOP PLENUM CAPTURE JET FAN, SPEED CONTROLLER AND COLLAR.
10. PROVIDE COUNTER MOUNTED SIDE CAPTURE JET PLENUM ASSEMBLY AND FAN ON RIGHT SIDE OF HOOD.
11. PROVIDE CAPTURE INSTALLED CAPTURE JET FAN IN PLENUM.
12. PROVIDE CAPTURE JET AIR INLET AND COLLAR AT FRONT OF CLOSURE PANEL.
13. PROVIDE PIN AND SLEEVE ELECTRICAL BOX (DOUBLE CONNECTION). SEE ARCHITECTURAL AND ELECTRICAL DRAWINGS FOR ADDITIONAL INFORMATION.
14. PROVIDE PIN AND SLEEVE ELECTRICAL BOX (SINGLE CONNECTION). SEE ARCHITECTURAL AND ELECTRICAL DRAWINGS FOR ADDITIONAL INFORMATION.
15. PROVIDE 3" ZERO CLEARANCE TO COMBUSTIBLE RIGHT SIDE SPACER.
16. PROVIDE NOTCHED LEFT END SIDE PANEL.
17. PROVIDE NOTCHED RIGHT END SIDE PANEL.
18. PROVIDE 3"x3" HORIZONTAL AND VERTICAL TRIM ANGLE FOR RIGHT SIDE OF HOOD TO FINISH OFF GAP AT WALL.
19. PROVIDE FULL LEFT END SIDE PANEL.
20. PROVIDE FULL RIGHT END SIDE PANEL.
21. PROVIDE HALTON KBD EQUALIZER.
22. CONTINUOUS CAPTURE INTERNAL LEFT END CUTOUT.
23. CONTINUOUS CAPTURE INTERNAL RIGHT END CUTOUT.

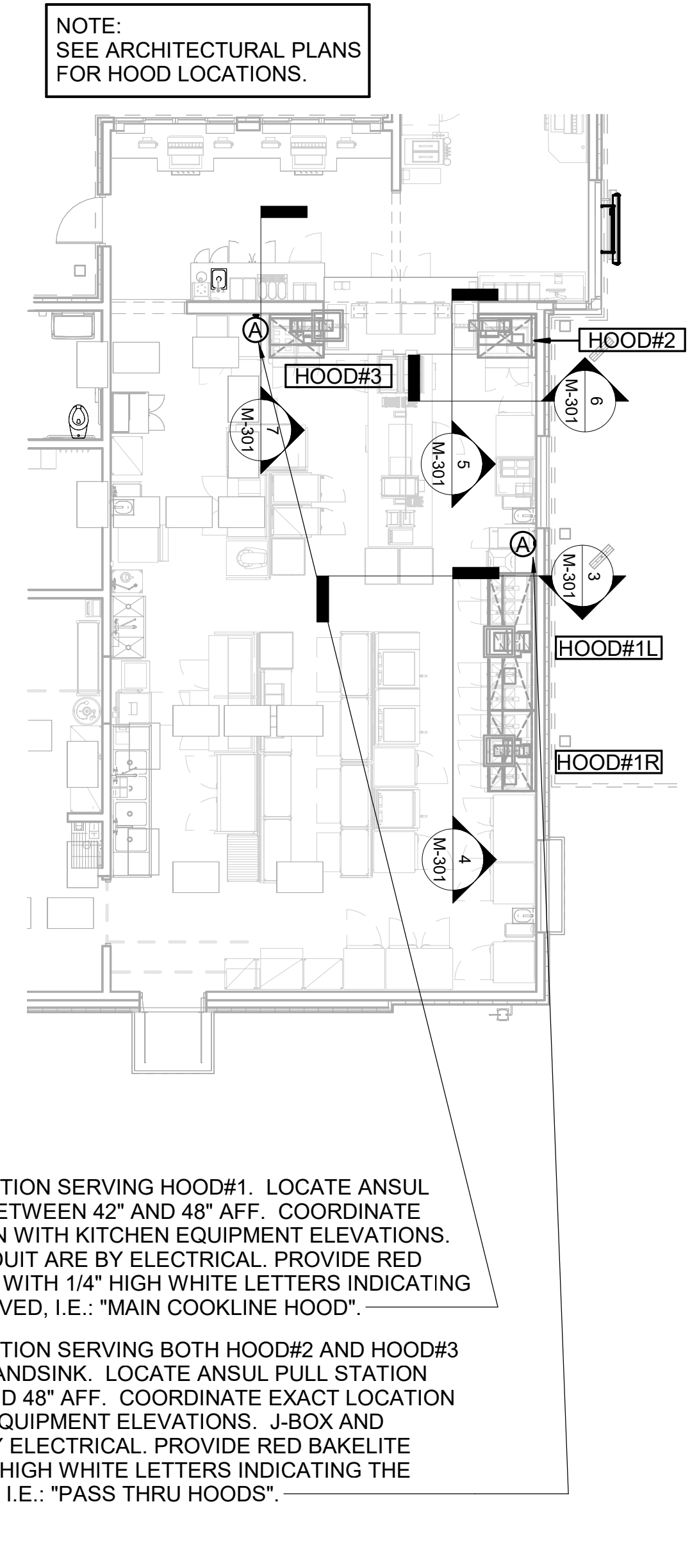
- KITCHEN HOOD SYSTEMS NOTES**
1. CHICK-FIL-A MAINTAINS A NATIONAL ACCOUNT WITH HALTON CO. FOR THE HOODS. CHICK-FIL-A WILL PURCHASE AND PROVIDE THE HOODS FOR INSTALLATION BY THE MECHANICAL CONTRACTOR. THE MECHANICAL CONTRACTOR SHALL BE RESPONSIBLE FOR RECEIVING THE HOODS. CONTACT HALTON CO. AT 270-237-5600 FOR MORE INFO.
 2. THE FIRE SUPPRESSION SYSTEM SHALL CONSIST OF A COMPLETE WET ANSUL SYSTEM FURNISHED BY HALTON. THE HOOD SHALL BE FURNISHED PRE-PIPED BY HALTON.
 3. THE R-102 ANSUL FIRE SUPPRESSION SYSTEM EXTERNAL TO THE HOODS SHALL BE INSTALLED IN ACCORDANCE WITH HOOD MANUFACTURER'S SHOP DRAWINGS BY AN AUTHORIZED ANSUL SYSTEM INSTALLER SELECTED AND HIRED BY HALTON. COST FOR ANSUL INSTALLATION INCLUDED IN PRICE OF HOODS TO CFA.
 4. HOOD EXHAUST DUCTWORK SHALL BE 16 GA. BLACK STEEL WITH CONTINUOUS LIQUID TIGHT WELD OF JOINTS & SEAMS.
 5. TURNS IN GREASE EXHAUST DUCTWORK SHALL BE LONG RADIUS TYPE, WITH A CENTERLINE RADIUS R=3W/2, UNLESS OTHERWISE NOTED. NO MITERED FITTINGS ALLOWED.
 6. ALL STAINLESS STEEL CLOSURE PANELS SHALL BE SUPPLIED BY HOOD MANUFACTURER AND INSTALLED BY THE MECHANICAL CONTRACTOR ACCORDING TO MANUFACTURER'S RECOMMENDATIONS.
 7. SLOPE ALL GREASE EXHAUST DUCT BACK TO HOOD AT 1/4" PER FOOT OF RUN.
 8. WRAP NEW GREASE DUCT WITH UNIFRAX FYREWRAP. INSULATION ON ACCESS DOORS SHALL BE INSTALLED ACCORDING TO MANUFACTURER'S INSTALLATION RECOMMENDATIONS. UNIFRAX FYREWRAP PRODUCT USED SHALL MEET LOCAL CODE REQUIREMENTS.
 9. SUPPORT ALL HOODS WITH THREADED ROD AT EACH FACTORY SUPPORT POINT. EACH SUPPORT POINT MUST SUPPORT THE HOOD WEIGHT EQUALLY. ATTACH TO STRUCTURE AS DETAILED ON STRUCTURAL DRAWINGS. ATTACH HOOD TO WALL AT 16" INTERVALS ALONG FULL LENGTH OF HOOD ON TOP AND BOTTOM. ATTACHMENT TO WALL REQUIRES FIELD DRILLING OF SUPPORT ANGLE AT BACK OF HOODS. EACH WALL ATTACHMENT POINT MUST OCCUR AT A WALL STUD. ATTACHMENT HARDWARE TO BE #12-24 HEX HEAD SHEET METAL SCREW EQUAL TO TEXTRON SDS EDT265, LENGTH AS REQUIRED TO FULLY PENETRATE THE STUD.



7 HOOD#2 SECTION NOT TO SCALE
 6 HOOD#2 & HOOD#3 FRONT ELEVATION NOT TO SCALE
 5 HOOD#3 SECTION NOT TO SCALE



4 HOOD#1L & HOOD #1R FRONT ELEVATION NONE
 3 HOOD#1L SECTION (HOOD#1R SIMILAR) NOT TO SCALE
 2 HALTON SIDE CAPTURE JET PLENUM NOT TO SCALE



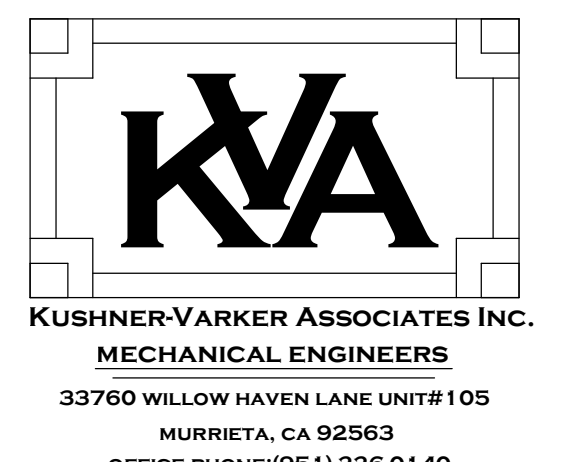
1 HOOD LAYOUT 1/8" = 1'-0"

Unifrax Fyrewrap is used on grease duct specs. NOT 3M.

NOTE: SEE ARCHITECTURAL PLANS FOR HOOD LOCATIONS.



Chick-fil-A
 5200 Buffington Road
 Atlanta, Georgia
 30349-2998



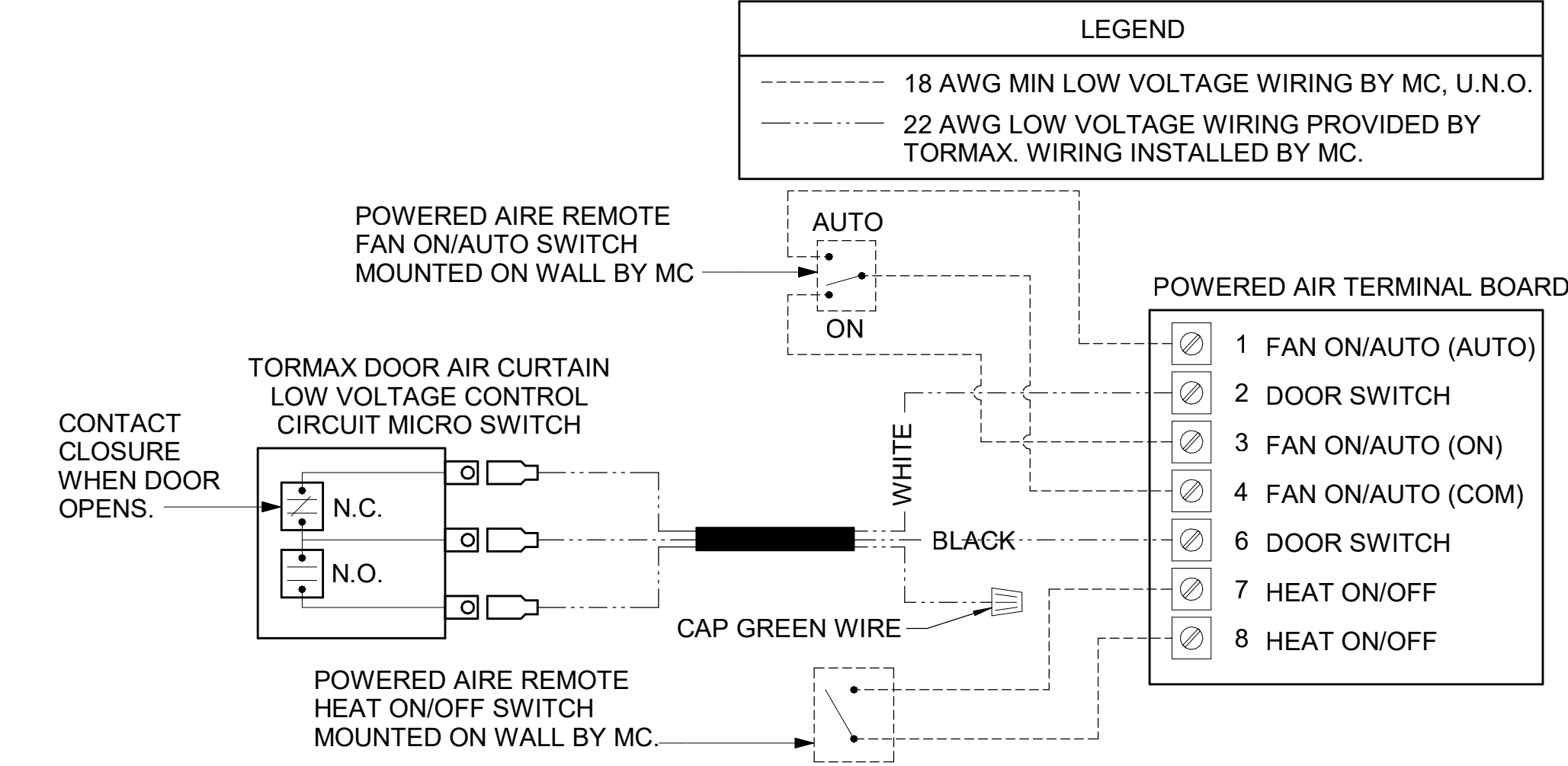
CHICK-FIL-A
 I-5 & BONNYVIEW RD
 NWC I-5 @ BONNYVIEW RD
 REDDING, CA 96001

FSR#05110
 BUILDING TYPE / SIZE: P13 DTO ALL
 RELEASE: 22.05

| REVISION SCHEDULE | | |
|-------------------|------|-------------|
| NO. | DATE | DESCRIPTION |
| | | |

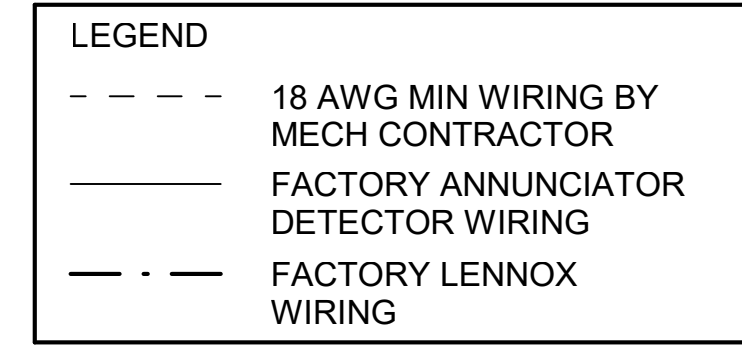
CONSULTANT PROJECT # 22-166
 PRINTED FOR PERMIT
 DATE 05/30/23
 DRAWN BY MPP
 SHEET HOOD DETAILS AND SCHEDULES
 SHEET NUMBER **M-301**

PROVIDE A PROFESSIONALLY LAMINATED COPY OF THESE DETAILS TO BE INSTALLED INSIDE THE ROOFTOP UNIT CONTROL CABINET. USE A SETON CHART FRAME STYLE #68624, TELEPHONE NUMBER 800-243-6624, FOR MOUNTING THE DETAIL. ATTACH THE FRAME TO THE INTERIOR OF THE UNIT IN PLAIN AND EASY VIEW OF THE CONTROLS SECTION. CONTACT ENGINEER OF RECORD FOR A REPRODUCIBLE COPY OF THE DETAIL.



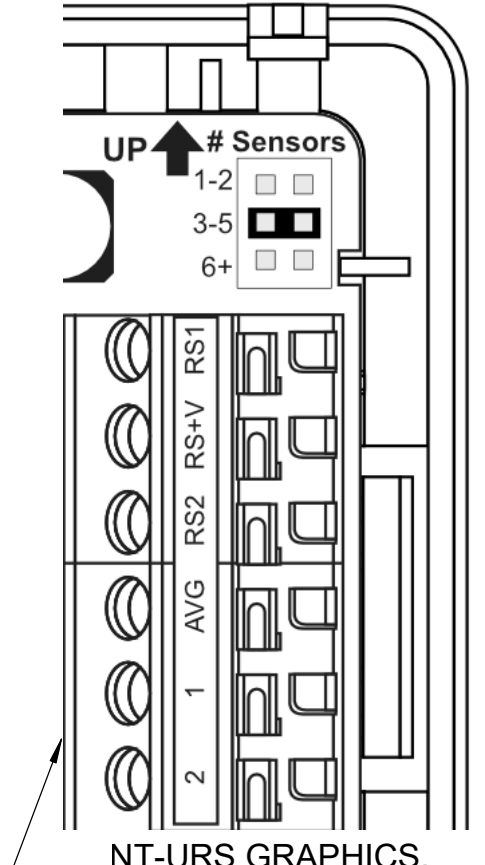
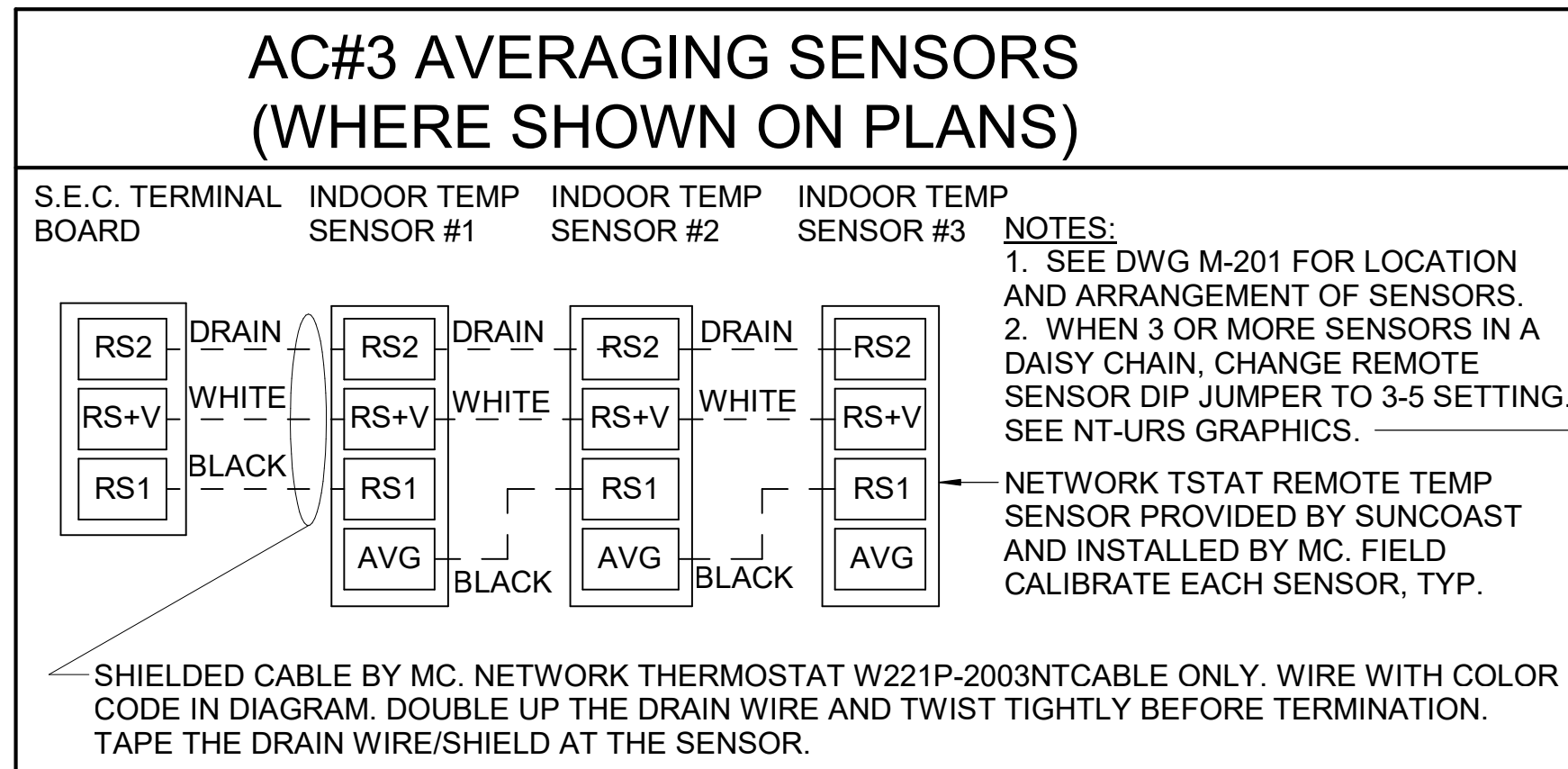
3 AIR CURTAIN WIRING DIAGRAM
 NOT TO SCALE

SUPPLY SIDE DETECTORS: IF SUPPLY SIDE SMOKE DETECTORS ARE SHOWN ON DWG M-201, AND CALLED FOR ON RTU SCHEDULE, THE CONTRACTOR IS TO RELOCATE FACTORY INSTALLED SUPPLY SMOKE DETECTOR FROM BLOWER SECTION TO DUCTWORK. SEE NOTES ON DWG M-201.



1 SMOKE DETECTOR AND ANNUNCIATOR WIRING DIAGRAM
 NOT TO SCALE

FULL SPEC AND ORDERING FOR THERMOSTAT CABLE AT: NETWORKTHERMOSTAT.COM/CFA

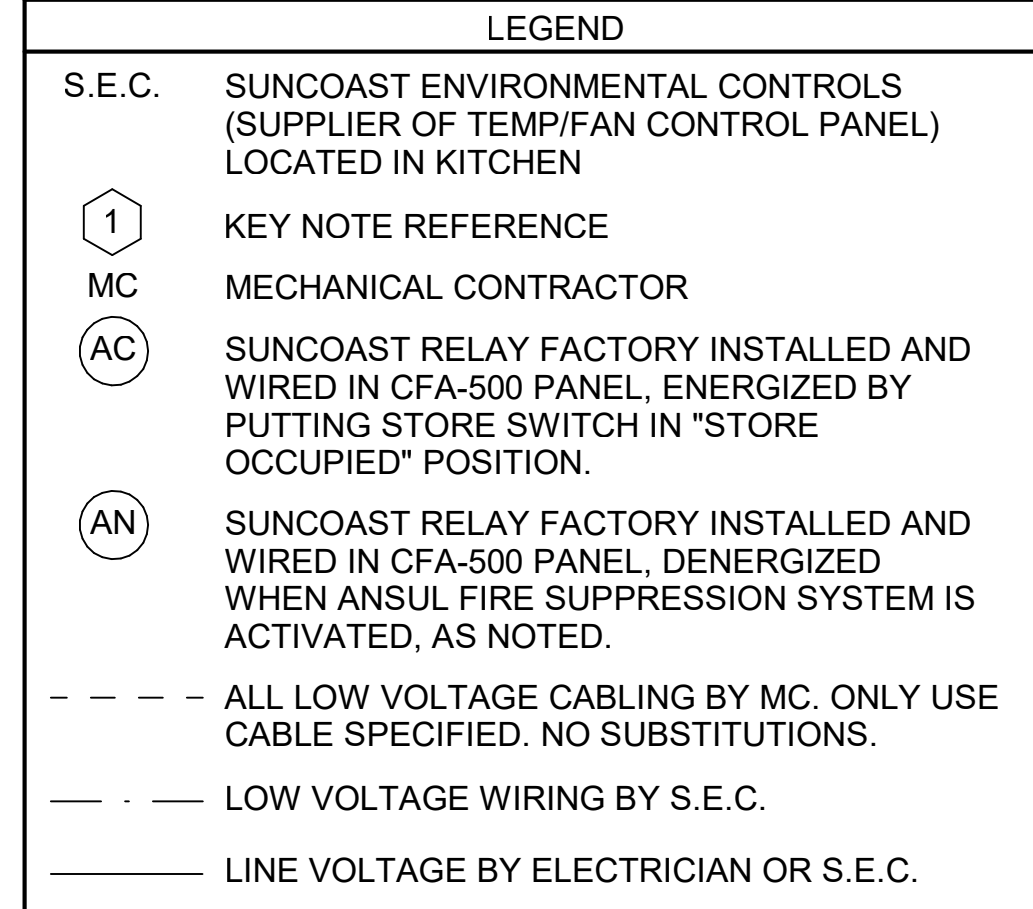


- LENNOX PRODIGY CONTROLLER SETTINGS:
- FOR ALL RTU'S EXCEPT AT AC#1, CHANGE PRODIGY-M3 BOARD CONTROL PARAMETER #65 TO ONE (#68 ON LCH UNITS). THIS WILL CAUSE THE O.A. DAMPER TO OPEN ON "OCCUPIED" START. AT AC#1 (LGH TYPE) LEAVE THE SETTING AT THE DEFAULT VALUE SO THE O.A. DAMPER WILL REMAIN CLOSED FOR THE FIRST 60 MINUTES AFTER "OCCUPIED" START. AT AC#1 (LCH TYPE) CHANGE THE VALUE TO 5400 SO THE O.A. DAMPER WILL REMAIN CLOSED FOR THE FIRST 90 MINUTES AFTER "OCCUPIED" START.
 - AT HUMIDITROL RTU'S, SET PRODIGY-M3 BOARD CONTROL PARAMETER #106 FOR DEHUMIDIFICATION OPERATION TO A VALUE OF 7.
 - AT HUMIDITROL RTU'S, SET PRODIGY-M3 BOARD CONTROL PARAMETER #106 FOR DEHUMIDIFICATION SET POINT TO A VALUE OF 60 (60% RH).
 - AT HUMIDITROL RTU'S, SET PRODIGY-M3 BOARD CONTROL PARAMETER #107 FOR DEHUMIDIFICATION MODE DEAD BAND TO VALUE OF 2 (2% RH).
 - AT MSAV UNITS, SET THE MSAV LOW SPEED SETTING TO THE SAME VALUE AS THE HIGH SPEED SETTING AFTER TAB IS COMPLETE.

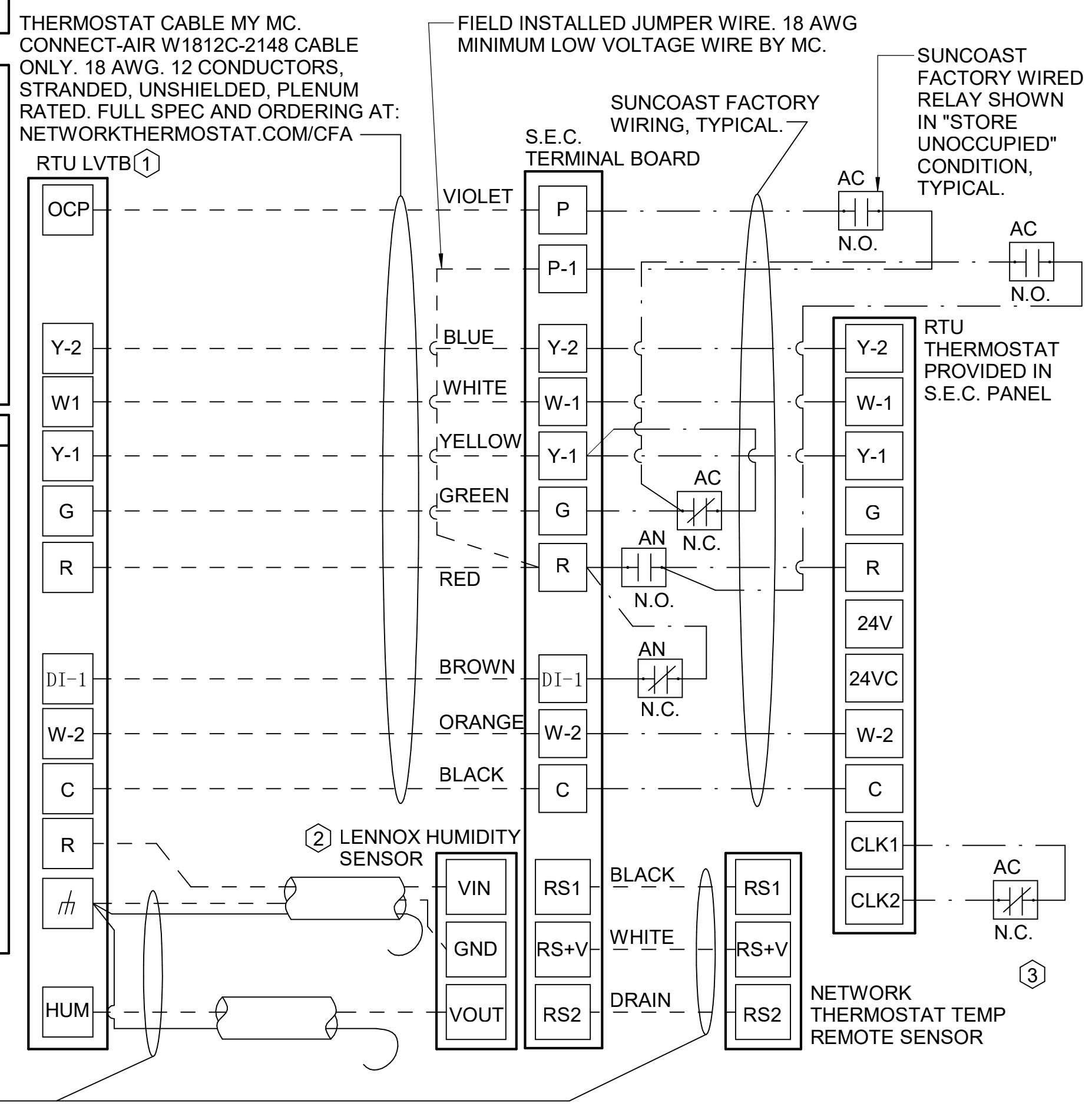
- LENNOX FRESH AIR HEATING SETUP WHEN SPECIFIED:
- INSTALL FRESH AIR TEMPERING KIT WIRING HARNESS AS RECOMMENDED BY LENNOX.
 - LOCATE SUPPLY AIR TEMPERATURE SENSOR IN SUPPLY DUCT DOWNSTREAM OF FIRST ELBOW. SECURE WIRING TO DUCT OR STRUCTURE WITH RUBBER COATED CLAMPS. DO NOT RUN WIRING INSIDE DUCT WORK. PROTECT ALL WIRING PENETRATIONS WITH RUBBER GROMMETS.
 - FOR PRODIGY 2.0: FIRST SET FRESH AIR HEATING ENABLE TO "YES" THRU THE TAB/DAMPER MENU (LEAVE FRESH AIR COOLING AS "NO"). NEXT, CHANGE PRODIGY-M3 BOARD CONTROL PARAMETER #156 TO A VALUE OF 66. THIS WILL PREVENT THE SUPPLY AIR TEMPERATURE FROM DROPPING BELOW 66F DEG DURING HEATING MODE WHEN THERMOSTAT IS NOT ACTIVELY CALLING FOR HEAT.
 - CHANGE PRODIGY-M3 BOARD CONTROL PARAMETER #157 TO A VALUE OF 14. THIS WILL MAKE THE DEADBAND VALUE EQUAL 14F.
 - CHANGE PRODIGY-M3 BOARD CONTROL PARAMETER #158 TO A VALUE OF 300. THIS WILL MAKE THE CYCLE TIME VALUE EQUAL 5 MINUTES.

- NOTES:**
- MECHANICAL CONTRACTOR SHALL MAKE PLASTIC LAMINATE OF THIS DETAIL AND INSTALL PERMANENTLY ON INSIDE DOOR OF ROOFTOP UNIT CONTROL COMPARTMENT.
 - SEE DETAILS THIS SHEET FOR SMOKE DETECTOR AND ANNUNCIATOR WIRING.
 - SET ALL THERMOSTATS FOR AUTO CHANGEOVER.
 - PROVIDE PLASTIC ENGRAVED LABEL AT ALL NEW SENSORS WITH 1/4" HIGH WHITE LETTERING ON BLACK BACKGROUND, I.E. "AC#2 HUMIDITY SENSOR" OR "AC#2 TEMP SENSOR". PLACE LABELS ON WALL ADJACENT TO DEVICE, DO NOT APPLY DIRECTLY TO DEVICE.

- KEYED NOTES:**
- LOW VOLTAGE WIRING TO RTU TO BE ROUTED TO UNIT THRU FACTORY WIREWAY.
 - HUMIDITROL UNITS ONLY: WIRING TO HUMIDITY SENSOR TO BE MADE WITH TWO SEPARATE RUNS OF SHIELDED TWISTED PAIR. TERMINATE SHIELD WIRES AT TB-1, LEAVE OPEN AT SENSOR.
 - NETWORK TSTAT REMOTE TEMP SENSOR PROVIDED BY SUNCOAST AND INSTALLED BY MC. SENSOR IS INTENDED TO BE SURFACE MOUNTED AND DOES NOT REQUIRE A SINGLE GANG BOX OF CONDUIT. FIELD CALIBRATE EACH SENSOR.



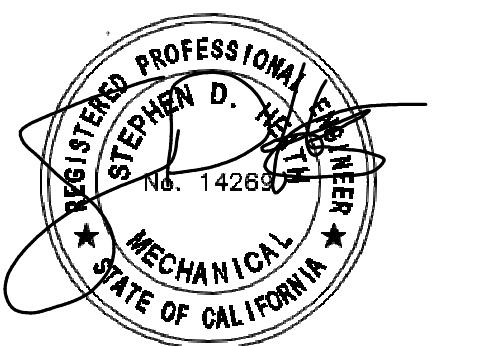
SHIELDED CABLE BY MC. NETWORK THERMOSTAT W221P-2003NTCABLE ONLY. 22AWG, 1-PAIR, TWISTED, SHIELDED, WITH DRAIN. PLENUM RATED. NO SUBSTITUTIONS. AFTER DRAIN WIRE TERMINATION, TAPE/INSULATE ALL EXPOSED DRAIN/SHIELD AT SENSOR. DO NOT CONNECT SHIELD/DRAIN WIRE.



2 ROOFTOP UNIT CONTROL WIRING - LENNOX
 NOT TO SCALE



Chick-fil-A
 5200 Buffington Road
 Atlanta, Georgia
 30349-2998



CHICK-FIL-A
 I-5 & BONNYVIEW RD
 NWC I-5 @ BONNYVIEW RD
 REDDING, CA 96001

FSR#05110
 BUILDING TYPE / SIZE: P13 DTO ALL
 RELEASE: 22.05

REVISION SCHEDULE

| NO. | DATE | DESCRIPTION |
|-----|------|-------------|
| | | |

CONSULTANT PROJECT # 22-166
 PRINTED FOR PERMIT
 DATE 05/30/23
 DRAWN BY JAL

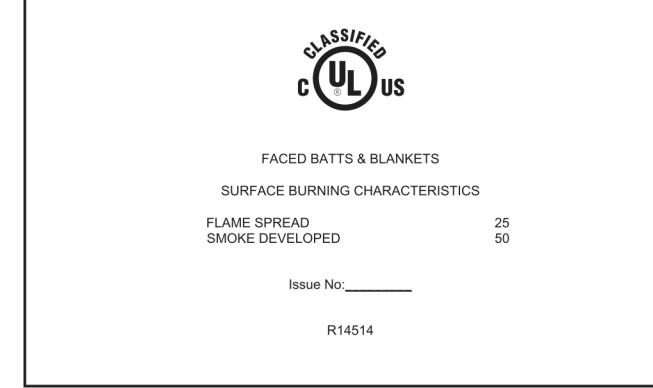
Information contained on this drawing and in all digital files produced for above named project may not be reproduced in any manner without express written or verbal consent from authorized project representatives.

SHEET HVAC CONTROLS

SHEET NUMBER
M-501



- FyreWrap products offer solutions in applications such as:
- Grease, Air Ducts
 - Cable Trays, Conduits
 - Control System Covers
 - Above Ground Storage Tanks
 - Marine Bulkheads, Decks
 - Structural Steel
 - Construction Joints
 - Curtain Walls/Siding
 - Circuit Protection
 - Railroad Tank Cars
 - Transect Cars
 - Ships
 - Expansion Joints
 - Fire Door Seals
 - Chimney Liners
 - Calling Air Diffusers
 - Hazardous Material Storage Containers



Unifrax has a wide range of FyreWrap fire protection materials available to provide passive fire protection solutions in a variety of applications in the commercial building, industrial facility and transportation industries.

For additional information about product performance or to identify the recommended product for your fire protection application, please contact Unifrax at 716-768-6500 and ask for Fire Protection Application Engineering.

APPLIED FIRE PROTECTION

UNIFRAX LLC
New Carlsde, IN

FyreWrap® Elite® 1.5 Duct Insulation
Nominal Density: 1.5 pcf

Intertek

WIN 14870
Reference: Intertek Directory of Listed Products
www.intertek.com/certificates

ASTM E119 Fire Resistance Rating 2 Hour
ANSI/ASTM E814 - 15 Rating 2 Hr Fire-Proof 2 Hour
ASTM E208
UL 1995 - 2013 - 15 - Passes
UL 1995 - 2013 - 15 - Passes
ASTM E119 (Eq. 10.1) - Passes
ASTM E814 - 15 - Passes
ASTM E814 - 15 - Passes

Data are average results of tests conducted under standard procedures and are subject to variation. Results should not be used for specification purposes.

Refer to the product Safety Data Sheet (SDS) for recommended work practices and other product safety information.

Form C-1496
Effective 6/16/21
© 2018 Unifrax LLC
All Rights Reserved
Printed in USA
Page 5 of 6



Attachment Options

Three attachment options are available for installers. The choices are limited by the duct width dimension. Details on each are provided below and shown in Figure 1.

Banding Only: For Duct Widths 24" or Less

To temporarily secure the insulation, optional use of filament tape is permitted. Place carbon steel or stainless steel bands (min. 1/2" wide, nom. 0.015" thick) over material joints and within the field between. Locate bands 1/2" from the edge of each blanket overlap. Place an additional band(s) between overlaps, spaced 10 1/2" on center. Tighten banding to firmly hold the wrap system in place but not so tight as to cut or damage the blanket and secure with minimum 1" long steel crimp clips. Pins are NOT required when the duct size falls within the above dimensions and this banding technique is used.

Banding and Pins: For Duct Widths ≤ 48"

Weld 12-gauge steel insulation pins to the underside of horizontal runs and backside (side of duct having largest dimension) of vertical duct runs. Place pins at maximum 12" rows and on maximum 10 1/2" centers. To temporarily secure the insulation, optional use of filament tape is permitted. Impale FyreWrap Elite 1.5 over the pins and secure with 2 1/2" square or 1 1/2" round galvanized steel speed clips (washers). Turn down or cut off exposed ends of pins to eliminate safety hazards. Locate carbon steel or stainless steel bands

(min. 1/2" wide, nom. 0.015" thick) 1/2" from the edge of each overlap joint. Locate an additional band(s) between overlaps, spaced 10 1/2" on center. Tighten banding to firmly hold the wrap system in place but not so tight as to cut or damage the blanket and secure with minimum 1" long steel crimp clips. Cup head style pins are also permitted and shall be located at the same spacing as pre-welded pins.

Pins Only: For Duct Widths > 48"

Weld 12-gauge steel insulation pins on all sides of the duct. Place insulation pins at maximum 12" rows and on maximum 10 1/2" centers. Pins in each row are maximum 6" from each duct edge. Locate insulation overlaps so they are centered on the pins. Impale FyreWrap Elite 1.5 over the pins and hold in place with 2 1/2" square or 1 1/2" round galvanized steel speed clips (washers) to keep the blanket from sagging. Turn down or cut off exposed ends of pins to eliminate safety hazards. Cup head style pins are also permitted and shall be located at the same spacing as pre-welded pins. The pins only attachment method can be used for duct widths less than 48", but is optional.

Supports

The duct support system shall be designed as required by IMC or SMACNA requirements and that will support the load of the ventilation air duct and the additional weight of the FyreWrap Elite 1.5 Duct Insulation ADS System under a fire load.

Attachment Options (Summary Chart):

| Duct Dimension | Banding Only | Banding & Pins (Pins on Bottom) | Pins Only (All Four Sides) |
|----------------|--------------|---------------------------------|----------------------------|
| Width ≤ 24" | • | • | • |
| Width ≤ 48" | • | • | • |
| Width > 48" | | | • |

Firestop Systems

Where ducts installed with FyreWrap Elite 1.5 pass through fire-rated walls and floors, the penetration opening shall be firestopped to maintain the fire rating of the assembly. Firestop systems tested per ASTM E119 and ASTM E814 are provided on the next page. Additional Tested and Listed firestop systems may be available for use. For details and assistance, contact Unifrax at 716-768-6500 and ask for Fire Protection Application Engineering, or search the test laboratory web site directly for the latest documentation.

Form C-1496
Effective 6/16/21
© 2018 Unifrax LLC
All Rights Reserved
Printed in USA
Page 3 of 6



Product Information Sheet

FyreWrap® Elite® 1.5 Duct Insulation – Air Distribution System (ADS Ducts)

Introduction

Unifrax's FyreWrap® Elite® 1.5 Duct Insulation is a single-layer flexible duct wrap enclosure for 1- and 2-hour fire-rated air distribution systems (ADS ducts). Typical duct types include smoke control, hazardous exhaust, laboratory chemical fume, stairwell and vestibule pressurization, ventilation, supply/return ducts, commercial dryer exhaust, as well as refuse and linen chutes. This slim, compact design is an alternate to code prescribed fire-rated shafts and results in significant weight, space and labor savings when compared to traditional shafts.

FyreWrap Elite 1.5 Duct Insulation Air Distribution System (ADS) offers the following features:

- 1- and 2-hour fire-rated enclosure (3 hour available)
- Alternate to fire-rated shaft
- Zero clearance to combustibles at all locations on blanket wrap
- Saves weight, space, labor
- Thin, lightweight single-layer system
- High-temperature, bio-soluble insulation
- Durable foil-scrim covering
- GREENGUARD listed for Microbial Resistance

Typical Product Parameters

Thickness 1.5"
Nominal Density 6pcf
Standard Product Form Scrim Encapsulated
Product Availability 1.5' x 24' x 25LF
1.5' x 48' x 25LF

Core Material Components

Core Material: FyreWrap Elite 1.5 Duct Insulation incorporates Insulfrax® Thermal Insulation as its core material. Insulfrax is a high-temperature insulation made from calcia, magnesia, silica chemistry designed to enhance bio-solubility. It provides excellent insulation in a non-combustible blanket form rated to 2300°F (1260°C).

Encapsulating Material: The core insulation is completely encapsulated in an aluminum foil, fiberglass-reinforced scrim covering. This scrim provides additional handling strength as well as protection from tearing and moisture absorption.

Complies with: IBC 2018, IMC 2018, NFPA 92A 2009, NFPA 92B 2009, NFPA 101 2018

Installation

FyreWrap Elite 1.5 Duct Insulation ADS System consists of a single-layer applied directly on to the duct surface. Only encapsulated blanket should be utilized to ensure the outer surface of the insulation is protected. The insulation system may be installed at zero clearance to combustibles at all locations on the wrap – at material overlaps and in the field between overlaps. To minimize waste, FyreWrap Elite 1.5 should be rolled out tautly before measuring and making any material cuts. Install insulation with a 2" minimum overlap on all joints. Seal cut edges with pressure-sensitive aluminum foil tape. The perimeter transverse overlap of adjacent blanket may be installed using any of the following three techniques. See Figure 1 for details.

Telescope Overlap Wrap Technique –

This wrap technique is the most common method of installing FyreWrap Elite 1.5 where each adjacent blanket has one

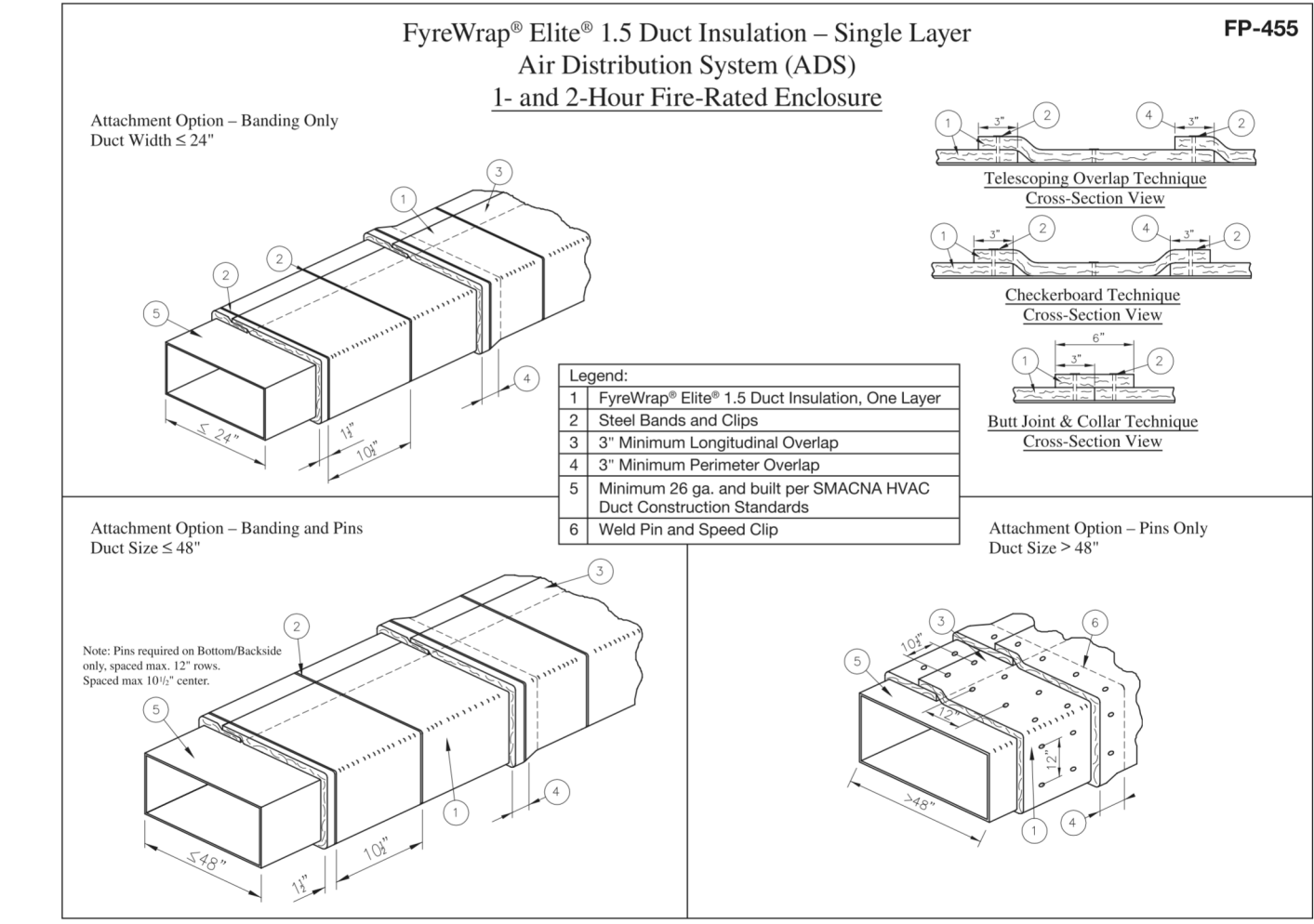
edge exposed and one edge covered by the next blanket, to form a 3" overlap.

Checkerboard Overlap Wrap Technique –

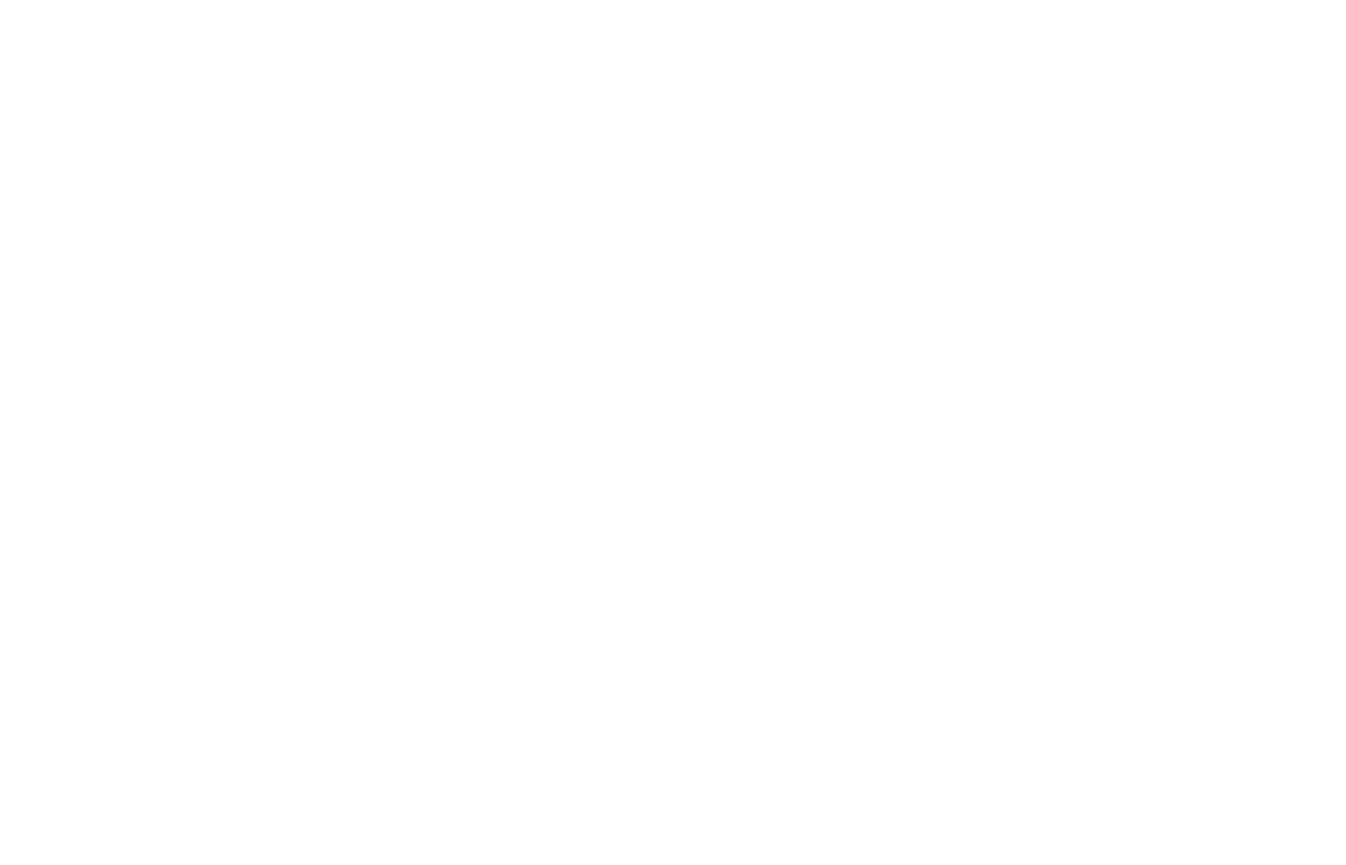
This installation uses a 3" overlap pattern with both edges of each alternating blanket covered by each adjacent blanket whose edges are exposed. The overlap joints in alternate layers of blanket resemble a checkerboard pattern in the completed installation. This technique is often utilized when a small section of duct wrap must be repaired.

Butt Splice with Collar Wrap Technique –

This wrap technique permits installation with the blanket edges butted together and a 6" wide collar of blanket that is centered over the butt splice, overlapping each adjacent blanket 3". The collar can be field fabricated from FyreWrap Elite 1.5 rolls or purchased separately.



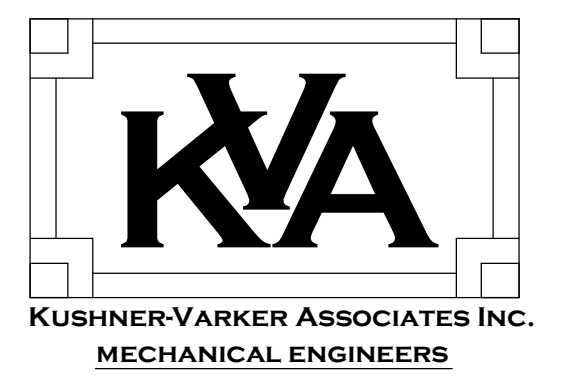
Form C-1496
Effective 6/16/21
© 2018 Unifrax LLC
All Rights Reserved
Printed in USA
Page 6 of 6



Form C-1496
Effective 6/16/21
© 2018 Unifrax LLC
All Rights Reserved
Printed in USA
Page 4 of 6



Chick-Fil-A
5200 Buffington Road
Atlanta, Georgia
30349-2998



KUSHNER-VARKER ASSOCIATES INC.
MECHANICAL ENGINEERS
33760 WILLOW HAVEN LANE UNIT#105
MURRETTA, CA 92563
OFFICE PHONE: (951) 226-0140



CHICK-FIL-A
I-5 & BONNYVIEW RD
NWC I-5 @ BONNYVIEW RD
REDDING, CA 96001

FSR#05110
BUILDING TYPE / SIZE: P13 DTO ALL
RELEASE: 22.05

REVISION SCHEDULE

| NO. | DATE | DESCRIPTION |
|-----|----------|------------------|
| 1 | 05/30/23 | Agency Revisions |

| | |
|----------------------|----------|
| CONSULTANT PROJECT # | 22-166 |
| PRINTED FOR | PERMIT |
| DATE | 05/30/23 |
| DRAWN BY | MPP |

Information contained on this drawing and in all digital files produced for above named project may not be reproduced in any manner without express written or verbal consent from authorized project representatives.

SHEET
GREASE DUCT WRAP DETAILS

SHEET NUMBER **M-603**

1. SECTION C15000 - MECHANICAL SPECIFICATIONS

PART I - GENERAL

1.01 SCOPE

- IT IS THE RESPONSIBILITY OF CONTRACTOR TO READ ALL SPECIFICATIONS AND CONSULT ALL DRAWINGS WHICH MAY AFFECT THE INSTALLATION AND COORDINATION OF HIS WORK WITH OTHER TRADES. CONTRACTOR SHALL COORDINATE AND MAKE MINOR ADJUSTMENTS IN LOCATION OF EQUIPMENT AND MATERIALS AS NECESSARY TO SECURE COORDINATION.
- COMPLETED INSTALLATION SHALL CONFORM TO ALL APPLICABLE FEDERAL, STATE AND LOCAL CODES AND ORDINANCES, INCLUDING BUT NOT LIMITED TO THE LATEST APPROVED EDITIONS OF NFPA-96, NFPA-90A, NFPA-94, SMACNA, ASHRAE 90.1 AND ASHRAE 62.
- SYSTEM LAYOUT IS SCHEMATIC AND EXACT LOCATIONS SHALL BE DETERMINED BY STRUCTURAL CONDITIONS, COORDINATION WITH OTHER TRADES, COORDINATION WITH FINISHES AND OTHER CONDITIONS. STRUCTURAL SUPPORTS SHALL NOT BE CUT OR ALTERED TO ASSURE FIT OF HVAC SYSTEM. TEN FOOT CLEARANCE SHALL BE MAINTAINED BETWEEN OUTSIDE AIR INTAKES AND EXHAUST FANS AND PLUMBING VENT TERMINALS.
- CONTRACTOR SHALL BE RESPONSIBLE FOR ALL DEFECTS, REPAIRS AND REPLACEMENTS IN MATERIALS AND WORKMANSHIP FOR A PERIOD OF ONE (1) YEAR AFTER FINAL PAYMENT IS APPROVED. CONTRACTOR SHALL HONOR FACTORY WARRANTIES ON ALL EQUIPMENT PROVIDED AS PART OF THIS SYSTEM.
- UPON COMPLETION OF PROJECT, ALL SYSTEM EQUIPMENT AND MATERIALS SHALL BE IN NEW, CLEAN CONDITION WITH ALL DAMAGE RESTORED TO CONDITION ACCEPTABLE TO THE OWNERS REPRESENTATIVE. ALL EQUIPMENT, COMPONENTS, DUCTWORK AND AIR DEVICES SHALL BE INSPECTED, THOROUGHLY CLEANED, CLEARED OF DEBRIS, AND READY FOR USE. AT COMPLETION OF JOB, ALL MISCELLANEOUS TOOLS, SCAFFOLDING, SURPLUS MATERIALS, RUBBISH AND DEBRIS SHALL BE REMOVED BY CONTRACTOR.
- CONTRACTOR SHALL PROVIDE TWO SETS OF 2" MERV 8 OR HIGHER THROW AWAY TYPE FILTERS. A CLEAN SET SHALL BE PROVIDED PRIOR TO TEST AND BALANCE AND AGAIN PRIOR TO OPENING.

PART II - PRODUCTS

2.01 HEATING AND COOLING EQUIPMENT (C15730)

- FURNISH AND INSTALL R-410A ROOFTOP SINGLE PACKAGE COMBINATION ELECTRIC COOLING AND NATURAL GAS FIRED HEATING UNITS BY LENNOX AS SHOWN ON DRAWINGS. EQUIPMENT SHALL BE ARI CERTIFIED AND A.G.A. AND U.L. LISTED.
- ACCESSORIES SHALL INCLUDE LOW AND HIGH PRESSURE SAFETIES, CRANK CASE HEATER, OVERCURRENT AND OVERTEMPERATURE SAFETY, COMPRESSOR VIBRATION ISOLATORS, FILTER DRIERS, REFRIGERANT SERVICE VALVES, COIL HAIL GUARDS WHERE SCHEDULED, CONVENIENCE OUTLETS FACTORY INSTALLED ON SCHEDULED UNITS, UNIT MOUNTED NON-FUSED DISCONNECTS, LOW AMBIENT OPERATION DOWN TO 30 DEGREES F AND EVAPORATOR FREEZE STAT.
- COMPRESSORS SHALL BE FULLY HERMETIC SCROLL TYPE WITH INTERNAL VIBRATION ISOLATORS. COMPRESSORS SHALL BE PROVIDED WITH A MINIMUM FIVE (5) YEAR FULL WARRANTY.
- THE UNIT HEAT EXCHANGERS SHALL BE STEEL WITH ALUMINIZED STEEL COATING. HEATING CONTROLS SHALL CONSIST OF REDUNDANT GAS VALVES, INTERMITTENT PILOT WITH ELECTRONIC SPARK OR HOT PLATE IGNITION SYSTEM, COMBUSTION/EXHAUST FAN PROTECTED BY CENTRIFUGAL SWITCHES, HEAT LIMIT SWITCHES, TIME-DELAY RELAY, FLAME, AND PILOT SENSORS. ALL UNITS SHALL BE CAPABLE OF TWO STAGES OF HEAT. HEAT EXCHANGES SHALL HAVE A TEN (10) YEAR WARRANTY. BURNERS SHALL BE ALUMINIZED IN-SHOT TYPE. THE DRAFT MOTOR SHALL BE MONITORED BY THE CONTROL SYSTEM.
- CHICK-FIL-A MAINTAINS A NATIONAL ACCOUNT FOR EQUIPMENT WITH LENNOX CORPORATION. PRICING FOR THE EQUIPMENT HAS BEEN ESTABLISHED IN ADVANCE. CONTACT LENNOX NATIONAL ACCOUNTS AT 972-497-6260 (OR BY FAX AT 972-497-5112) FOR PRICING, ORDERING AND AVAILABILITY.

2.02 DUCTWORK (C15735) (SEE DWG M-301 FOR ADDITIONAL GREASE DUCT SYSTEM REQ.)

- ACCEPTABLE MANUFACTURERS OF INSULATION ARE MANVILLE, OWENS CORNING OR KNAUF.
- ALL DUCTWORK SHALL BE SHEET METAL, UNLESS NOTED OTHERWISE (U.N.O.).
- DUCT DIMENSIONS SHOWN ARE INSIDE CLEAR DIMENSIONS, U.N.O.
- CONSTRUCTION OF DUCTWORK SHALL MEET SMACNA 1" W.C. PRESSURE CLASS STANDARD RECOMMENDATIONS. SMACNA SHALL BE FOLLOWED WITH RESPECT TO GAGE THICKNESS, JOINTS, REINFORCING, CONSTRUCTION, INSTALLATION AND SUPPORT FOR PRESSURE CLASS STATED. ALL TRANSVERSE JOINTS IN RECTANGULAR AND ROUND DUCT INCLUDING DUCT CONNECTION TO AIR DEVICE COLLAR SHALL BE SEALED PER SMACNA SEAL CLASS C WITH U.L. DUCT MASTIC SEALANT APPROVED FOR INTENDED USE. DUCT TAPE IS NOT AN ACCEPTABLE SUBSTITUTE FOR MASTIC UNLESS EQUAL TO HARDCAST FOIL-GRIP 1402 BUTYL RUBBER ADHESIVE TAPE.
- DUCT SHALL BE SUPPORTED AT BASE OF DUCT DROPS. CURB DUCT RAILS ARE NOT INTENDED TO AND SHALL NOT SUPPORT THE WEIGHT OF THE DUCT.
- ALL DUCT INSULATION SHALL MEET MINIMUM R-VALUE REQUIRED BY ASHRAE 90.1 LATEST EDITION. ALL DUCT WRAP SHALL BE MINIMUM 2" THICK, 3/4 PCF AND 6 R-VALUE INSTALLED WITH EITHER A VAPOR BARRIER WITH MAXIMUM PERMEANCE 0.05 OR A MINIMUM 2 MIL ALUMINUM REINFORCED FOIL/KRAFT FACING.
- ALL DUCT DROPS FROM THE ROOFTOP UNITS SHALL BE EXTERNALLY INSULATED.
- SUPPLY AND RETURN AIR DUCTWORK SERVING ALL AREAS SHALL BE EXTERNALLY INSULATED.
- ALL AIR CONVEYANCE COMPONENTS SUCH AS, BUT NOT LIMITED TO DUCT, DUCT PLENUMS, GRILLES/DIFFUSERS, BACK PANS, AND BOOTS SHALL BE INSULATED. INSULATION TYPE IS COVERED ELSEWHERE IN THIS SPECIFICATION.
- RESTROOM RECTANGULAR EXHAUST AIR DUCTWORK SHALL BE LINED WITH 1" THICK, 1-1/2 PCF INSULATION. RESTROOM ROUND EXHAUST DUCT SHALL BE EXTERNALLY INSULATED PER SECTION 2.02F.
- TRUNK DUCTS SHALL BE ISOLATED FROM UNIT VIBRATION WITH THE USE OF NFPA AND U.L. APPROVED FLEXIBLE CONNECTORS INSTALLED AT THE TOP OF BOTH SUPPLY AND RETURN DROPS.
- INSULATED FLEXIBLE DUCT MAY BE UTILIZED FOR RUNOUTS TO GRILLES AND DIFFUSERS ONLY IN THE HORIZONTAL POSITION AND IN MAXIMUM LENGTHS OF 4'-0", NO EXCEPTIONS. SEE TAKE-OFF DETAIL ON DRAWING M-401.
- CONSTRUCTION OF FLEXIBLE DUCTWORK SHALL INCLUDE SPIRAL METAL HELIX BONDED TO A POLYESTER CORE, FIBERGLASS INSULATION WITH POLYETHYLENE OR MYLAR VAPOR BARRIER. ALL COMPONENTS SHALL HAVE APPROPRIATE U.L. APPROVAL AND SHALL BE EQUIVALENT TO THERMAFLEX MKE.
- FLEXIBLE DUCT SHALL BE INSTALLED PER THE "ADC FLEXIBLE DUCT PERFORMANCE AND INSTALLATION STANDARDS, 4TH ED" USING FOIL TAPE AND DRAWBAND ON THE INNER CORE AND TAPE OR DRAWBAND ON THE OUTER JACKET.
- DUCT TAPE SHALL BE EQUAL TO FASSON 181-BX, F-2, 1-1/2" WIDE.
- SINGLE THICKNESS TURNING VANES SHALL BE INSTALLED AT 90 DEGREE TURNS IN SUPPLY DUCTWORK WHERE ANY ONE DIMENSION IS GREATER THAN 12".
- RADIUS ELBOWS MAY BE SUBSTITUTED FOR 90 DEGREE ELBOWS AT THE DISCRETION OF THE CONTRACTOR. CENTERLINE RADIUS EQUAL TO, R-W PER FIGURE NO. 4-2 IN SMACNA HVAC DUCT CONSTRUCTION STANDARDS.
- EXTERNAL INSULATION ON BOTTOM OF DUCTS 24" OR WIDER SHALL BE SUPPORTED WITH STICK PINS ON 18" CENTERS. STICK PIN WASHERS SHALL BE COVERED WITH DUCT TAPE OR MASTIC.

2.03 CONTROLS (C15735)

- SYSTEMS SHALL BE COMPLETE WITH CONNECTIONS TO CFA-500 TEMPERATURE CONTROL PANEL AS MANUFACTURED BY SUNCOAST ENVIRONMENTAL CONTROLS (S.E.C.) (PH: 877-544-6679). THE PANEL IS PROVIDED AND MOUNTED BY THE ELECTRICAL CONTRACTOR. CONTROL WIRING TERMINATIONS ARE BY THE MECHANICAL CONTRACTOR.
- THE SMOKE DETECTORS SHALL BE FACTORY INSTALLED AND WIRED BY THE ROOFTOP UNIT MANUFACTURER.
- A FACTORY INSTALLED SMOKE DETECTOR IN THE SUPPLY AIR SECTION OF EACH AIR CONDITIONING UNIT SHALL STOP THE INDOOR FAN AND CLOSE THE OUTSIDE AIR DAMPER IN THE EVENT OF EXCESSIVE TEMPERATURE OR SMOKE. UPON DETECTION, THE SYSTEM SHALL NOT RESTART UNTIL THE DEVICE IS MANUALLY RESET. DEVICES SHALL BE LOCATED WHERE THEY CAN BE EASILY ACCESSED AND WHERE CLEAR OF FILTERS.
- CHICK-FIL-A HAS A NATIONAL ACCOUNT WITH SUNCOAST ENVIRONMENTAL CONTROLS FOR THE SMOKE DETECTOR TEST/RESET ANNUNCIATOR STATIONS. THE TEST/RESET STATIONS WILL BE PURCHASED BY THE ELECTRICAL CONTRACTOR AS A PART OF A NATIONAL ACCOUNT PACKAGE AND TURNED OVER TO THE MECHANICAL CONTRACTOR FOR INSTALLATION.
- THE REMOTE TEST/RESET ANNUNCIATORS SHALL BE PROVIDED BY THE ELECTRICAL CONTRACTOR AND INSTALLED BY THE MECHANICAL CONTRACTOR. INSTALLATION BY MECHANICAL SHALL INCLUDE MOUNTING OF THE ANNUNCIATORS AND ALL WIRING FROM EACH DEVICE TO THE RTU. ELECTRICAL WILL PROVIDE A JUNCTION BOX IN THE WALL WITH 1/2" CONDUIT STUBBED UP ABOVE THE CEILING FOR EACH REMOTE TEST STATION AS SHOWN ON THE ELECTRICAL PLANS. ANNUNCIATOR SHALL BE SUNCOAST CONTROLS REMOTE TEST/RESET STATION WITH POWER LED, TROUBLE LED, ALARM LED, 90DB HORN AND TEST/RESET BUTTON.
- THE RESTROOM FAN SHALL BE INTERLOCKED TO THE LIGHTS SERVING THE MEN AND WOMEN'S RESTROOMS. THE HOOD FANS SHALL BE CONTROLLED VIA THE SUNCOAST CFA-500 CONTROL PANEL. WIRING, RELAYS AND SWITCHES FOR CONTROL OF ALL FANS ARE BY ELECTRICAL CONTRACTOR.
- LENNOX UNITS - THERMOSTATS ARE PROVIDED AND INTEGRATED INTO THE TEMPERATURE CONTROL PANEL BY SUNCOAST ENVIRONMENT CONTROLS. SUNCOAST WILL PROVIDE A NETWORK THERMOSTAT US32-CFA THERMOSTAT PREWIRED IN THE TEMPERATURE CONTROL PANEL. A REMOTE TEMPERATURE SENSOR FOR EACH THERMOSTAT IS ALSO PROVIDED. MECHANICAL CONTRACTOR SHALL INSTALL ALL WIRING BETWEEN THE THERMOSTAT, THE REMOTE SENSOR AND THE ROOFTOP UNIT.
- MECHANICAL CONTRACTOR SHALL INSTALL CONTROL WIRING IN 1/2" CONDUIT WHERE REQUIRED BY CODE. WHERE NOT REQUIRED TO BE IN CONDUIT, ALL WIRING SHALL BE RUN PARALLEL TO STRUCTURAL MEMBERS OR PERPENDICULAR WITH NO DIAGONAL ROUTING. ALL WIRING SHALL BE SECURED TO THE FRAMING TO PREVENT SAGGING IN RUNS. WIRING TO ROOFTOP UNITS SHALL BE ROUTED THROUGH THE FACTORY THRU-BASE FITTING IN THE UNIT BASE. NO SPLICING OF WIRING WILL BE ACCEPTED. ALL WIRING ABOVE THE ROOF SHALL BE INSTALLED IN EXTERIOR GRADE FLEXIBLE CONDUIT. ALL CONTROL WIRING AND CONTROL WIRING CONDUIT SHALL BE FURNISHED AND INSTALLED BY THE MECHANICAL CONTRACTOR. WIRING SHALL BE INSTALLED IN ACCORDANCE WITH LATEST EDITION OF NEC. ALL LOW VOLTAGE CONTROL WIRING SHALL BE NO LESS THAN 18 AWG MIN. CONTROL WIRING CONDUCTORS SHALL BE SIZED TO ACCOUNT FOR LOAD AND LENGTH OF RUN TO ALLOW SUFFICIENT VOLTAGE AVAILABLE AT CONTROLLED DEVICE TO OPERATE THE SYSTEM RELIABLY.

PART III - EXECUTION

3.01 SCOPE

- FURNISH AND INSTALL SYSTEM IN ACCORDANCE WITH REFERENCED STANDARDS, APPLICABLE CODES, MANUFACTURER'S RECOMMENDATIONS AND AS INDICATED ON DRAWINGS.
- CONTRACTOR SHALL INSTRUCT THE OWNER'S REPRESENTATIVE IN ALL MATTERS PERTAINING TO THE PROPER MAINTENANCE OF EQUIPMENT FURNISHED UNDER THIS CONTRACT THROUGH DEMONSTRATION AND EXPLANATION OF OPERATING & MAINTENANCE MANUALS.
- CONTRACTOR SHALL PROVIDE A "SAMPLE MAINTENANCE PROPOSAL" TO THE OWNER'S REPRESENTATIVE IN ALL MATTERS PERTAINING TO THE PROPER MAINTENANCE OF EQUIPMENT FURNISHED UNDER THIS CONTRACT.
- CONTRACTOR SHALL COMPLETE A/C EQUIPMENT STARTUP DOCUMENTATION PROVIDED BY OWNER AND/OR MANUFACTURER. THIS SHALL INCLUDE RE-TORQUE OF ALL FIELD AND FACTORY HIGH VOLTAGE CONNECTIONS.

3.02 LEED PROJECTS

- CONTRACTOR SHALL COMPLETE RECEIPT INSPECTION CHECKLISTS PROVIDED IN THE COMMISSIONING PLAN WITHIN 5 DAYS OF RECEIVING EQUIPMENT ON SITE.
- CONTRACTOR SHALL COMPLETE PRE-FUNCTIONAL CHECKLISTS PROVIDED IN THE COMMISSIONING PLAN. CHECKLISTS SHALL BE RETURNED AT LEAST 5 DAYS PRIOR TO SCHEDULING FUNCTIONAL PERFORMANCE TESTING.
- CONTRACTOR SHALL PROVIDE A TECHNICIAN TO ASSIST THE THIRD PARTY COMMISSIONING AUTHORITY WITH FUNCTIONAL TESTING. FUNCTIONAL TESTING SHALL OCCUR AFTER ALL CONTROLS HAVE BEEN INSTALLED AND VERIFIED AND AFTER TEST AND BALANCE IS COMPLETE. THE FUNCTIONAL PERFORMANCE TEST PROCEDURES CAN BE FOUND IN THE COMMISSIONING PLAN.
- IF THE TOTAL TIME REQUIRED TO CORRECT PROBLEMS DURING TESTING IS GREATER THAN FORTY-FIVE (45) MINUTES (UNLESS EXTENUATING CIRCUMSTANCES EXIST), THE TEST SHALL BE CONSIDERED FAILED AND MUST BE REPEATED IN ITS ENTIRETY.
- RE-TESTING: DURING THE COURSE OF THE RETEST, IF AT ANY POINT A MAJOR DEFICIENCY IS DISCOVERED, THE TEST WILL BE STOPPED. REPEAT TESTS UNTIL ACCEPTABLE RESULTS ARE ACHIEVED. IF MORE THAN TWO FUNCTIONAL PERFORMANCE TESTS (ONE INITIAL TEST AND ONE RETEST) FOR ANY TYPE OF EQUIPMENT DUE TO ISSUES THAT THE CONTRACTOR HAD DIRECT OR INDIRECT CONTROL OVER ARE REQUIRED, THE COSTS FOR THE CX TO WITNESS RETESTING OF SIMILAR TYPES OF EQUIPMENT UNTIL SATISFACTORY RESULTS ARE OBTAINED SHALL BE THE RESPONSIBILITY OF THE CONTRACTOR.

3.03 TEST & BALANCE

- OWNER SHALL TEST AND BALANCE MECHANICAL SYSTEM IN ACCORDANCE WITH NEBB, NBC OR AABC STANDARDS TO ASSURE CONFORMANCE WITH DESIGN. G.C. WILL MAKE MECHANICAL CONTRACTOR AVAILABLE DURING TEST AND BALANCE TO ASSIST TESTING AGENCY AND TO MAKE CORRECTIONS IMMEDIATELY NECESSARY. CONTRACTOR SHALL CORRECT ITEMS ON WRITTEN TEST AND BALANCE REPORT.
- ALL EQUIPMENT TO BE BALANCED MUST HAVE GONE THRU SUCCESSFUL START-UP PROCEDURE BY THE MECHANICAL CONTRACTOR (MC) PRIOR TO TAB VISIT.
- THE FLOOR OF THE RESTAURANT SHALL BE CLEARED OF DEBRIS, STAGED CONSTRUCTION MATERIALS, EQUIPMENT, ETC. WHICH MAY, IN THE OPINION OF THE TAB TECHNICIAN, OBSTRUCT ACCESS TO AIR DISTRIBUTION COMPONENTS IN AND ABOVE THE CEILING.
- EQUIPMENT ACCESS PANELS, DUCT AIR DEVICES SUCH AS BALANCING DAMPERS AND ACTUATORS SHALL BE ACCESSIBLE AND CLEAR OF PIPING, CONDUIT, FRAMING, SUPPORTS ETC...
- PROVIDE AN 8 FT PORTABLE A-FRAME STYLE LADDER DEDICATED FOR THE TAB TECHNICIAN'S USE DURING THE ENTIRE TAB EFFORT DURATION.
- THE MC SHALL BE AVAILABLE DURING THE ENTIRE DURATION OF THE TAB EFFORT AND HAVE ON-SITE THE RESOURCES AND TOOLS TO MAKE CORRECTIONS AS NEEDED UNDER THE DIRECTION OF THE TAB TECHNICIAN.

NATIONAL ACCOUNTS

- LENNOX EQUIPMENT - CONTACT LENNOX NATIONAL ACCOUNTS AT 972-497-6260 (OR BY FAX AT 972-497-5112) FOR PRICING, ORDERING AND AVAILABILITY. LENNOX EQUIPMENT NOT PURCHASED THRU LENNOX NATIONAL ACCOUNTS WILL NOT BE ACCEPTED.
- LOREN COOK FAN AND CURB PACKAGE - THE MECHANICAL CONTRACTOR IS REQUIRED TO PURCHASE THE FAN/CURB PACKAGE DIRECTLY FROM TOM BARROW COMPANY. CONTACT MR. SCOTT GEORGE AT 404-351-1010 FOR PRICING AND AVAILABILITY. FANS AND CURBS NOT PURCHASED THRU TOM BARROW COMPANY WILL NOT BE ACCEPTED.
- PRICE AIR DEVICES - THE MECHANICAL CONTRACTOR IS REQUIRED TO PURCHASE THE AIR DEVICES DIRECTLY FROM TOM BARROW COMPANY. CONTACT MR. SCOTT GEORGE AT 404-351-1010 FOR PRICING AND AVAILABILITY. AIR DEVICES NOT PURCHASED THRU TOM BARROW COMPANY WILL NOT BE ACCEPTED.
- AIR DOORS - THE MECHANICAL CONTRACTOR IS REQUIRED TO PURCHASE THE AIR DOORS DIRECTLY FROM TOM BARROW COMPANY. CONTACT MR. SCOTT GEORGE AT 404-351-1010 FOR PRICING AND AVAILABILITY. AIR DOORS NOT PURCHASED THRU TOM BARROW COMPANY WILL NOT BE ACCEPTED.
- SUNCOAST ENVIRONMENTAL CONTROLS - THE CFA 500 PANEL AND THE TEST/RESET STATIONS WILL BE PURCHASED AND PROVIDED BY THE ELECTRICAL CONTRACTOR AS A PART OF A NATIONAL ACCOUNT PACKAGE. SEE PART II PARAGRAPH 3A, 3D, AND 3E OF THE MECHANICAL SPECIFICATIONS FOR MORE INFORMATION.
- HALTON HOODS - CHICK-FIL-A WILL PURCHASE AND PROVIDE THE HOODS FOR INSTALLATION BY THE MECHANICAL CONTRACTOR. THE MECHANICAL CONTRACTOR SHALL BE RESPONSIBLE FOR RECEIVING THE HOODS. CONTACT HALTON CO. AT 270-237-5600 FOR MORE INFO.
- ROYAL METAL PRODUCTS START COLLARS - THE MECHANICAL CONTRACTOR IS REQUIRED TO PURCHASE THE START COLLARS DIRECTLY FROM TOM BARROW COMPANY. CONTACT MR. SCOTT GEORGE AT 404-351-1010 FOR PRICING AND AVAILABILITY. START COLLARS NOT PURCHASED THRU TOM BARROW COMPANY WILL NOT BE ACCEPTED.
- SCHWANK INFRARED HEATER PACKAGE - THE MECHANICAL CONTRACTOR IS REQUIRED TO PURCHASE THE HEATER PACKAGE DIRECTLY FROM TOM BARROW COMPANY. CONTACT MR. SCOTT GEORGE AT 404-351-1010 FOR PRICING AND AVAILABILITY. HEATERS NOT PURCHASED THRU TOM BARROW COMPANY WILL NOT BE ACCEPTED.
- BROMIC ELECTRIC HEATER - THE MECHANICAL CONTRACTOR IS REQUIRED TO PURCHASE THE HEATER DIRECTLY FROM BROMIC HEATING USA. CONTACT MR. BLAKE RUSSIE AT 858-381-4850 FOR PRICING AND AVAILABILITY. HEATERS NOT PURCHASED THRU BROMIC HEATING USA WILL NOT BE ACCEPTED.
- TRANE EQUIPMENT - CONTACT MR. SCOTT ROWLEY AT 630-200-7155 FOR PRICING, ORDERING AND AVAILABILITY. TRANE EQUIPMENT NOT PURCHASED THRU TRANE NATIONAL ACCOUNTS WILL NOT BE ACCEPTED.

HVAC CONTROL PANEL SEQUENCE OF OPERATION

1 STORE OCCUPANCY SWITCH IN "STORE OPEN" POSITION:

- THERMOSTAT FOR RTU SHALL ENTER OCCUPIED MODE
- RTU INDOOR FAN SHALL RUN CONTINUOUSLY.
- EXHAUST FANS SHALL RUN CONTINUOUSLY.
- CAPTURE JET FANS, SHALL RUN CONTINUOUSLY.

2 STORE OCCUPANCY SWITCH IN "STORE UNOCCUPIED" POSITION:

- THERMOSTAT FOR RTU SHALL ENTER UNOCCUPIED MODE
- RTU INDOOR FAN SHALL RUN ONLY ON CALL FOR COOLING OR HEATING.
- EXHAUST FANS SHALL STOP
- CAPTURE JET FANS SHALL STOP.

FIRE INTERLOCK FUNCTION

- IN THE EVENT OF FIRE UNDER THE COOKING HOOD:
 - EXHAUST FANS WILL RUN TO DRAW SMOKE OUT OF THE BUILDING.
 - THE INTERIOR LIGHTS THAT ARE CONTROLLED BY THIS PANEL WILL TURN ON.
 - ALL INCOMING AIR WILL SHUT OFF INCLUDING ROOFTOP A/C UNIT FANS AND MAKE UP AIR.
 - ALL EQUIPMENT UNDER THE COOKING EXHAUST HOOD WILL SHUT DOWN VIA SHUNT TRIP BREAKER.

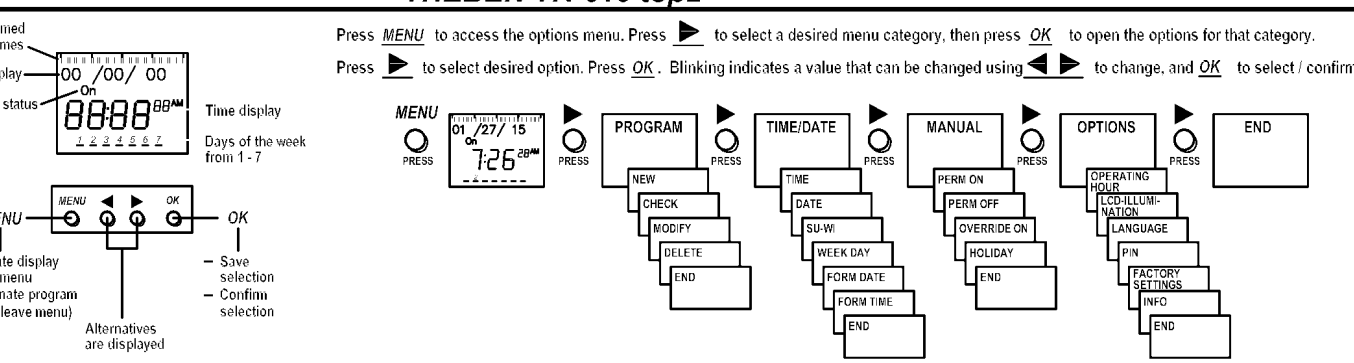
ALARM SYSTEMS OVERRIDE

- IF THE SECURITY ALARM IS CONNECTED TO THE T500 PANEL:
 - THE ALARM PANEL WILL OVERRIDE THE T500 PANEL INTO UNOCCUPIED MODE WHEN ALARM SYSTEM IS ARMED.

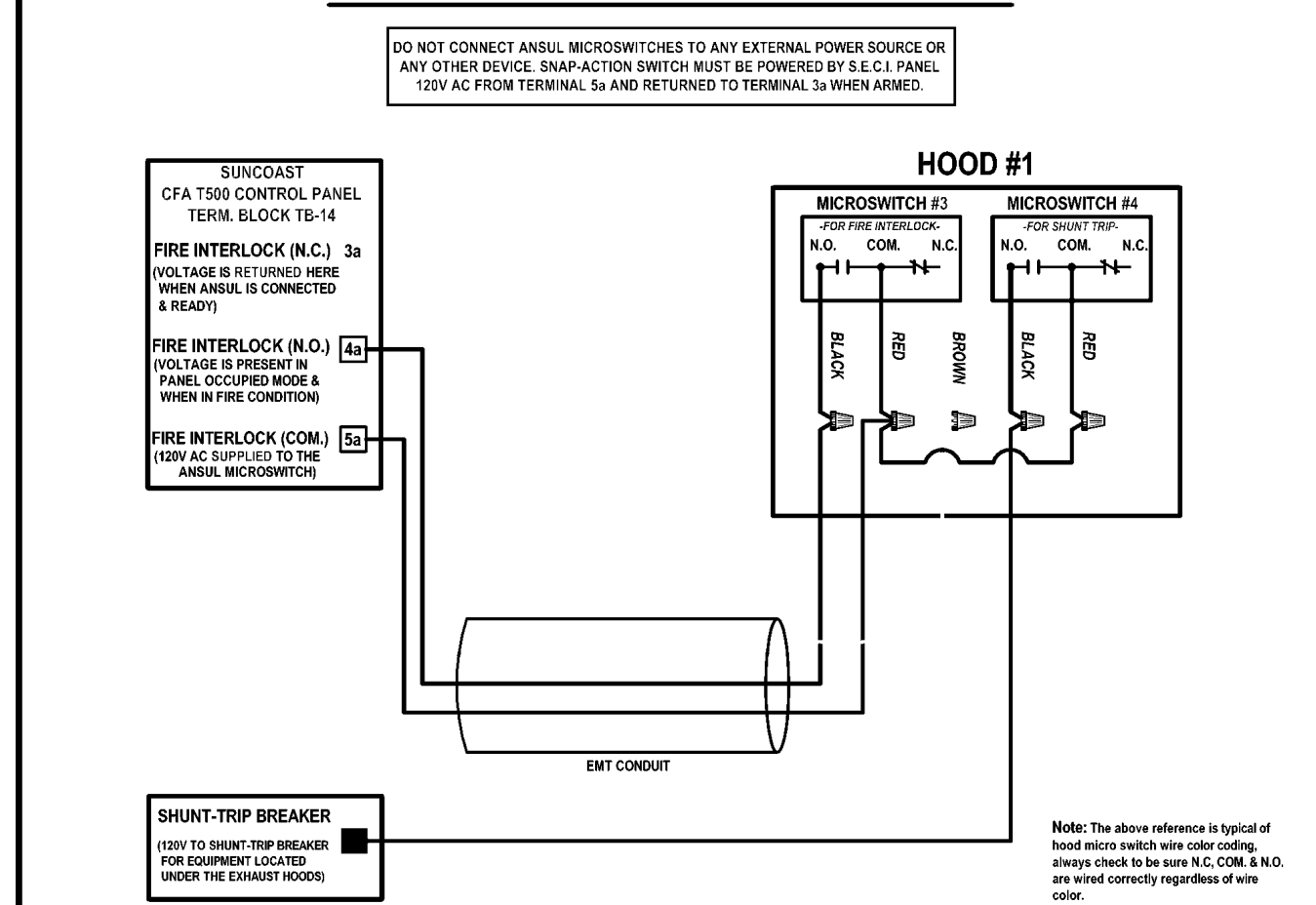
AFTER HOURS CLOCK OVERRIDE

- IN THE EVENT THAT THE STORE OCCUPANCY SWITCH IS LEFT ON AFTER HOURS:
 - THE TIME CLOCK WILL FORCE THE STORE TO UNOCCUPIED MODE.
 - A TWIST KNOB TIMER WILL PROVIDE A TIMED OVERRIDE OUTSIDE OF NORMAL OPERATING HOURS.

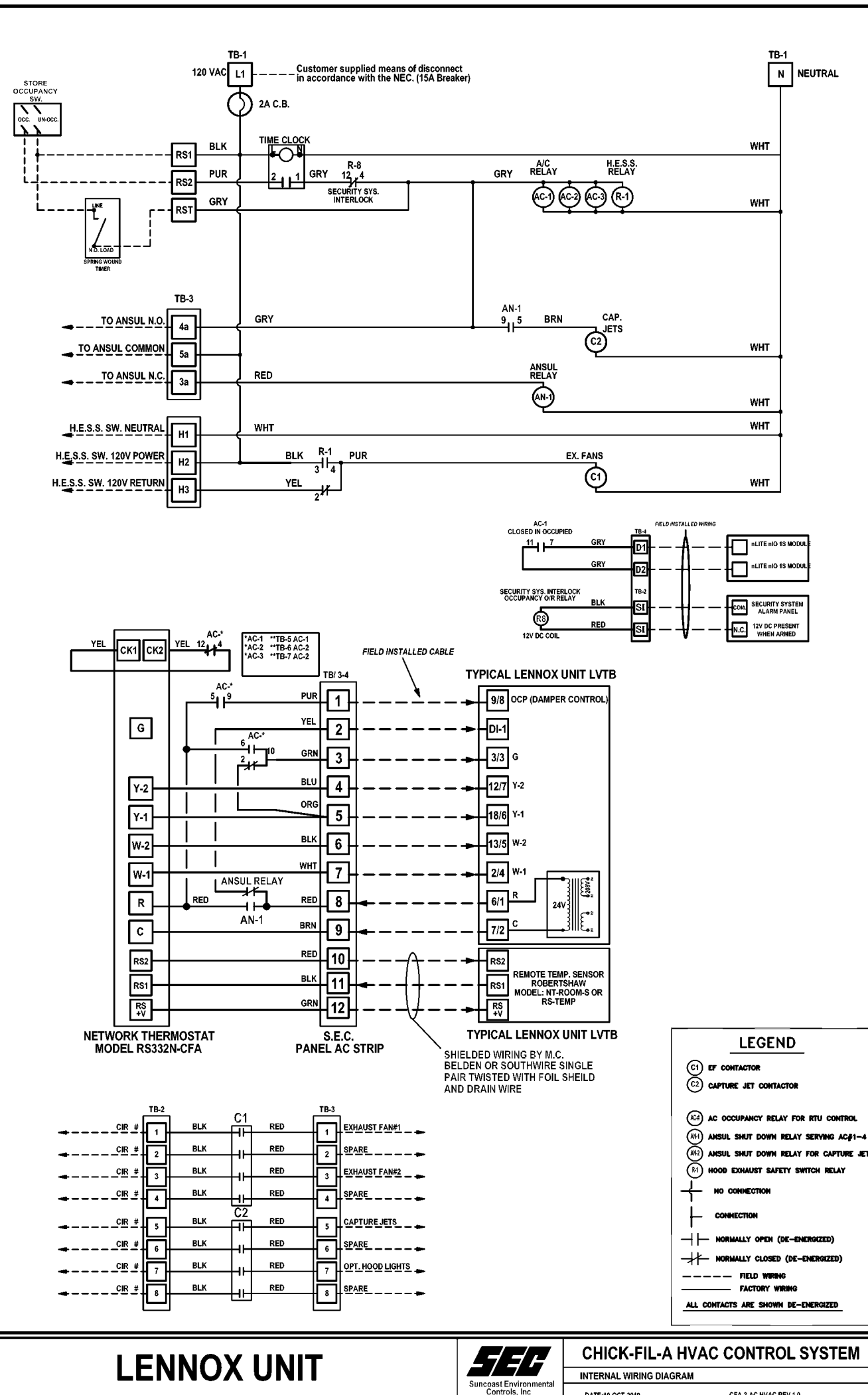
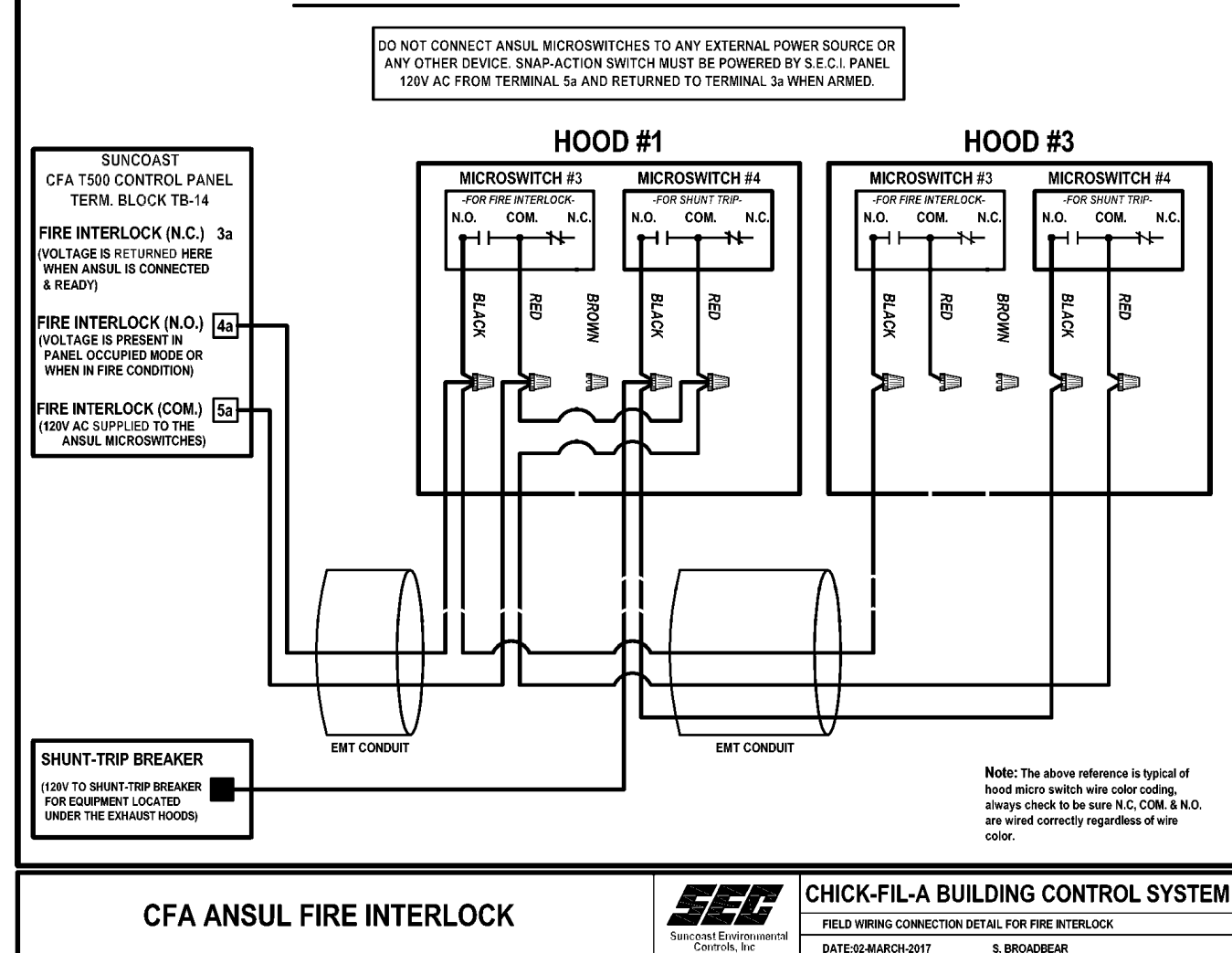
THEBEN TR-610 TR-62



ANSUL CONNECTIONS FOR ONE HOOD SHOWN



ANSUL CONNECTIONS FOR TWO HOODS SHOWN



Chick-fil-A
5200 Buffington Road
Atlanta, Georgia
30349-2998



CHICK-FIL-A
I-5 & BONNYVIEW RD
NWC I-5 @ BONNYVIEW RD
REDDING, CA 96001

FSR#05110
BUILDING TYPE / SIZE: P13 DTO ALL
RELEASE: 22.05

REVISION SCHEDULE
NO. DATE DESCRIPTION

CONSULTANT PROJECT # 22-166
PRINTED FOR PERMIT
DATE 05/30/23
DRAWN BY MPP

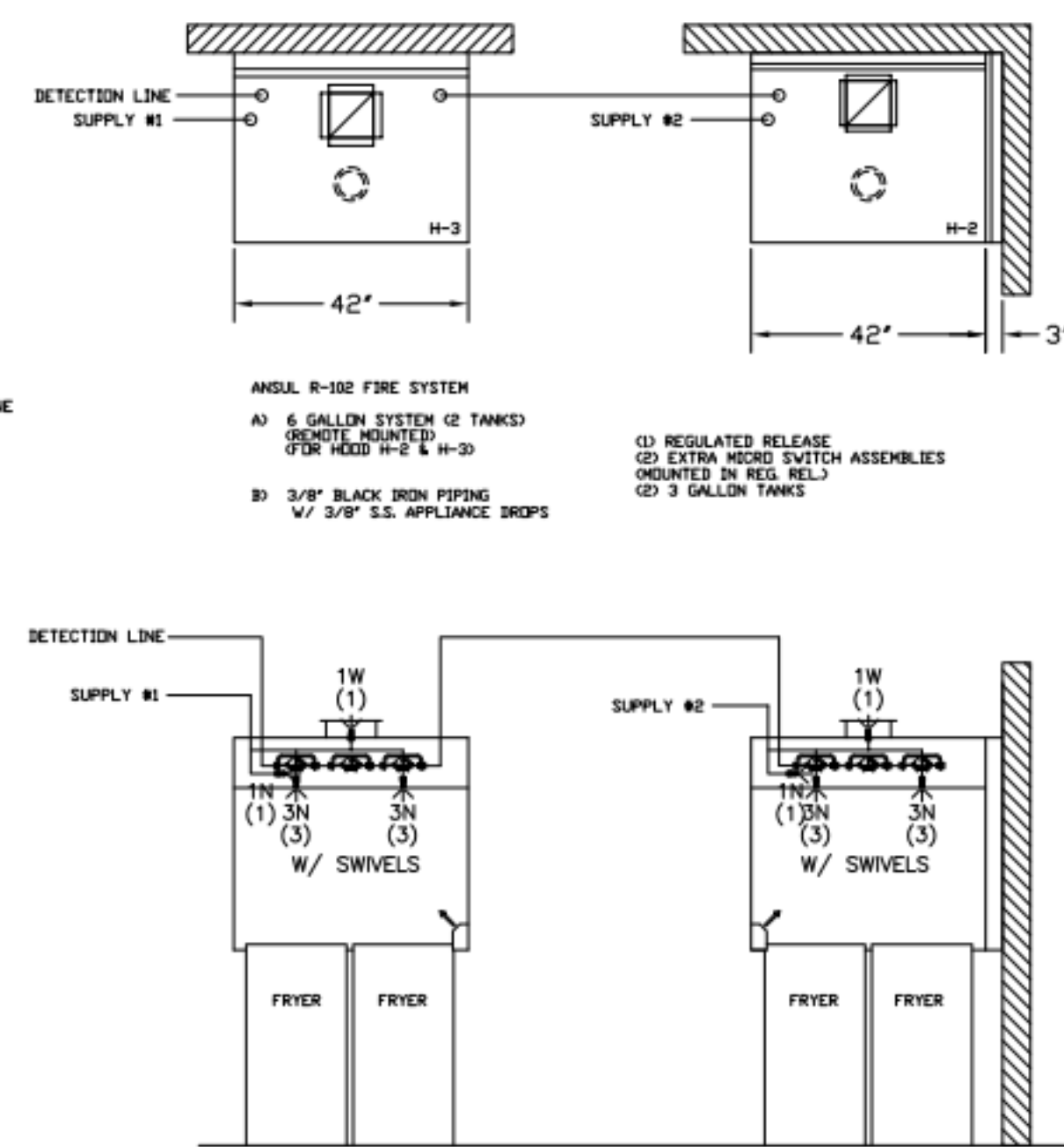
Information contained on this drawing and all digital files produced for above named project may not be reproduced in any form without express written or verbal consent from authorized project representatives.

SHEET
MECHANICAL SPECIFICATIONS
SHEET NUMBER

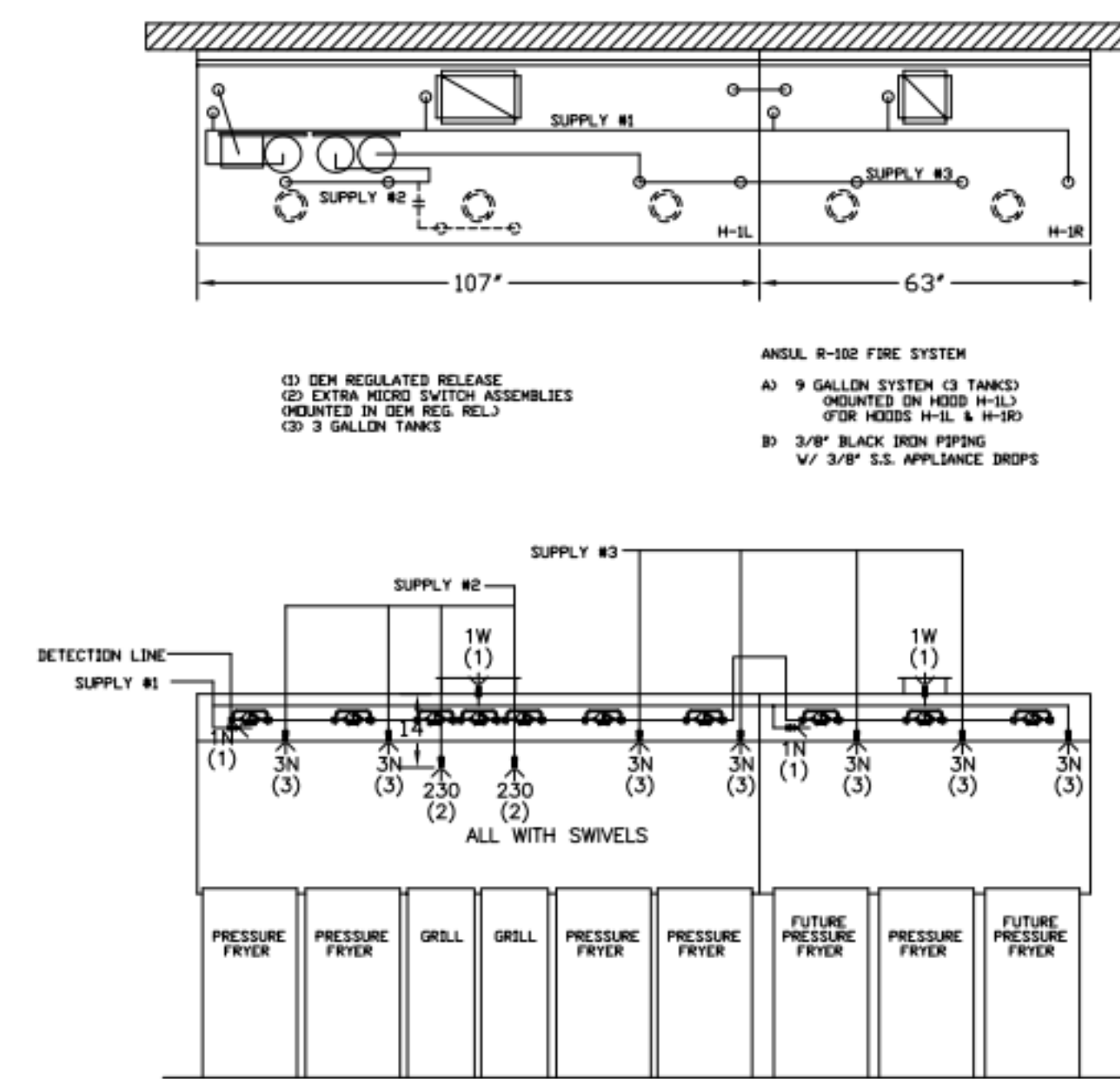
M-901

Autodesk Docs/CA_05110_I-5 & Bonnyview Rd_2022.6_DTO05110_I-5 & Bonnyview Rd_MEC.rvt
5/30/2023 6:13:55 PM
30-DTO-05110-M-901-MECHANICAL SPECIFICATIONS

****PROTECTS HOODS H-2 & H-3****
 REMOTE MOUNTED:
 (1) REGULATED RELEASE (WITH ONE TANK)
 (1) SINGLE TANK ENCLOSURE (WITH ONE TANK)



ANSUL R-102 FIRE SYSTEM LAYOUT



ANSUL R-102 FIRE SYSTEM LAYOUT

FUSIBLE LINK RATINGS

| ITEM | TEMP |
|---------------------|------|
| OPEN FRYERS | 450° |
| 2 BURNER / FLAT TOP | 450° |
| PRESSURE FRYERS | 450° |
| GRILL | 450° |
| EXHAUST COLLARS | 450° |

ANSUL R-102 FIRE SYSTEM NOTES
 THREE TANK SYSTEM MOUNTED ON TOP OF (H-1L)
 MAXIMUM FLOW POINTS = 33

ANSUL R-102 FIRE SYSTEM NOTES
 TWO TANK SYSTEM REMOTE MOUNTED
 MAXIMUM FLOW POINTS = 22

| ITEM # | QTY | DESCRIPTION | FLOW PTS (TOTAL) |
|-------------------------------|-----|-------------------|------------------|
| 1W | 4 | DUCT NOZZLES | 4 |
| 1N | 4 | PLENUM NOZZLES | 4 |
| 230 | 2 | APPLIANCE NOZZLES | 4 |
| 3N | 11 | APPLIANCE NOZZLES | 33 |
| TOTAL FLOW POINTS - 45 | | | |

| ITEM # | QTY | DESCRIPTION |
|--------|-----|------------------------------------|
| #200 | 14 | SERIES DETECTORS W/ FUSIBLE LINKS |
| #201 | 2 | TERMINAL DETECTOR W/ FUSIBLE LINKS |
| #202 | 1 | DEM REGULATED RELEASE |
| #202 | 1 | W/ DOUBLE POLE MICRO SWITCH |
| #202 | 1 | REGULATED RELEASE |
| #202 | 1 | W/ DOUBLE POLE MICRO SWITCH |
| #203 | 5 | 3 GALLON TANKS |
| #204 | 1 | SINGLE TANK ENCLOSURE |
| #205 | 2 | REMOTE PULL STATION |

ANSUL R-102 FIRE SYSTEM
 UL LISTED PER STD LATEST STD 300
 1. FINAL INSTALLATION IS TO BE MADE IN ACCORDANCE WITH ALL APPLICABLE CODES
 2. ALL ELECTRICAL COMPONENTS FOR EQUIPMENT SHUT DOWN TO BE PROVIDED BY THE ELECTRICIAN
 MICRO-SWITCH INSTALLED IN REGULATED RELEASE BY ANSUL INSTALLER
 3. REMOTE PULL STATION LOCATED PER MECHANICAL DRAWINGS

THIS DRAWING MUST BE CHECKED, SIGNED AND RETURNED TO THE APPROPRIATE FACTORY. PLEASE VERIFYING THE FOLLOWING:

1. ALL DIMENSIONAL INFORMATION, MOUNTING POSITIONS AND CLEARANCES.
2. THE LOCATION AND TYPE OF COOKING EQUIPMENT.

NOTE TO APPROVER
 THIS DRAWING IS FOR INFORMATION ONLY. AS RECEIVED, ENERGY INPUTS OF EQUIPMENT PROVIDED MUST BE CHECKED AGAINST THE DATA PROVIDED. IF ANY CHANGES OCCUR, A RECALCULATION EXHAUST AIRFLOW MAY BE REQUIRED.

APPROVED FOR FABRICATION
 WITH NO CHANGES
 WITH CHANGES AS NOTED



WEBSITE: WWW.HALTON.COM

HALTON CO. (USA)
 101 INDUSTRIAL DRIVE
 SCOTTSVILLE, KY 42164
 1-270-237-5600

MAIL APPROVED DRAWINGS TO APPROPRIATE FACTORY BELOW:

HALTON CO. (CANADA)
 1021 BREVIK PLACE
 MISSISSAUGA, ON L4W 3R7
 1-905-624-0301

| REV. | REVISION DESCRIPTION | BY | DATE |
|------|--|----|----------|
| 1 | ADDED 15" DIMENSION FOR NOTCH OPENING ON HOODS H-2 & H-3 | AF | 01.25.22 |
| 2 | | | |
| 3 | | | |
| 4 | | | |
| 5 | | | |
| 6 | | | |
| 7 | | | |

PROJECT: CHICK-FIL-A P13

LOCATION: ---
 DRAWN BY: AF
 DATE: 01.10.22
 SCALE: NTS

Halton Dwg: U22-057-01

Sheet MH-1.2

