

**HOOD INFORMATION - JOB#4923410**

HOOD TAG	MODEL	MANUFACTURER	LENGTH	MAX COOKING TEMP	TYPE	APPLIANCE DUTY	DESIGN EXH CFM	TOTAL EXH CFM	WIDTH	LENGTH	HEIGHT	DIAM	VELOCITY	SP	CONSTRUCTION	WHERE EXPOSED	HOOD END TO END	ROV	QUANTITY	LOCATION	SWITCHES
1	4824 ND-2	CAPTIVE-ARE	7'-0"	450 DEG	II	N/A	125	875	304 SS	16'-0"	16'-0"	4"	10'	875	1604	-0.212'	ALDNE	ALDNE	1 FAN	FRONT RIGHT	

HOOD TAG	TYPE	QTY	HEIGHT	LENGTH	EFFICIENCY @ 7 MICRONS	QTY	TYPE	WIRE GAUGE	LOCATION	SIZE	UTILITY CABINET(S)		HOOD WEIGHT (LBS)
											MODEL #	QUANTITY	
1	CONDENSATE BATTLE	5	16'	16'	N/A	3	LSS SERIES E36	ND				320	

**HOOD OPTIONS**

HOOD TAG	FIELD	WRAPPER	6.00' HIGH	FRONT, LEFT, RIGHT
1	BACKSLASH	80.00' HIGH X 154.00' LONG	304 SS VERTICAL	
	LEFT QUARTER END PANEL	23' TOP WIDTH, 0' BOTTOM WIDTH, 23' HIGH	304 SS	
	RIGHT QUARTER END PANEL	23' TOP WIDTH, 0' BOTTOM WIDTH, 23' HIGH	304 SS	

**EXHAUST FAN INFORMATION - JOB#4923410**

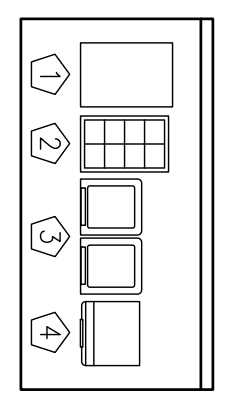
FAN UNIT TAG	QTY	MANUFACTURER	CFM	ESP	RPM	MOTOR ENCL	HP	BHP	PHASE	VOLT	FLA	DISCHARGE VELOCITY	WEIGHT (LBS)	SIZES
1	EFT1	FAN UNIT MODEL #	900	0.600	1233	TEAD-COM 0500	0.1890	1	115	6.3	342 FPM	70	11	

**FAN ACCESSORIES**

FAN UNIT TAG	QTY	DESCRIPTION
1	EFT1	ECM WIRING PACKAGE - MANUAL DR-0-10VDC REFERENCE SPEED CONTROL (TELECO MOTOR), 2 YEAR PARTS WARRANTY.

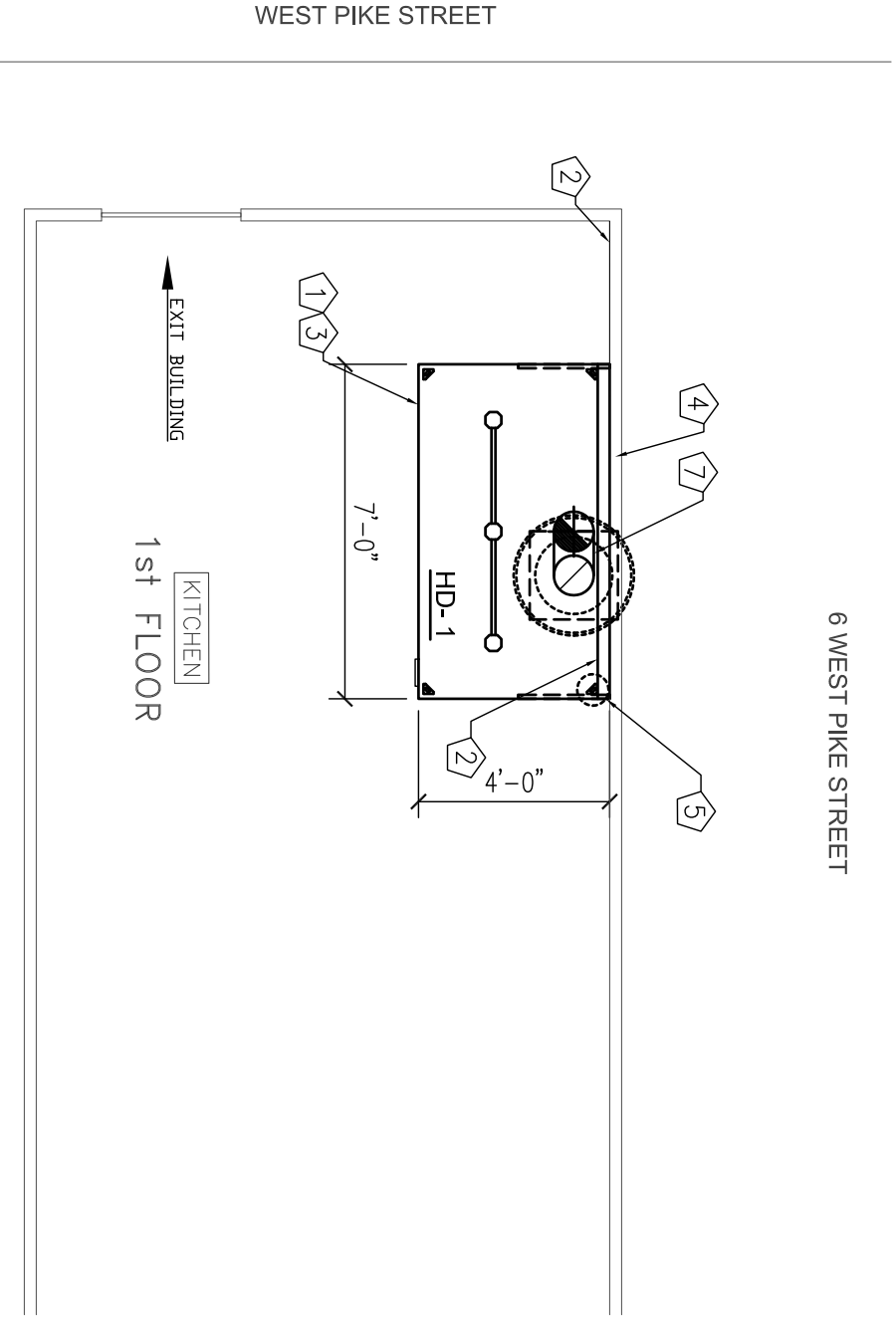
**CURB ASSEMBLIES**

DN FAN TAG	WT	ITEM	SIZE
1	EFT1	20 LBS	19.500"W X 19.500"L X 18.000"H 3.000"LEAD00 PITCH ALONG LENGTH, RIGHT.



**COOKING EQUIPMENT LAYOUT**

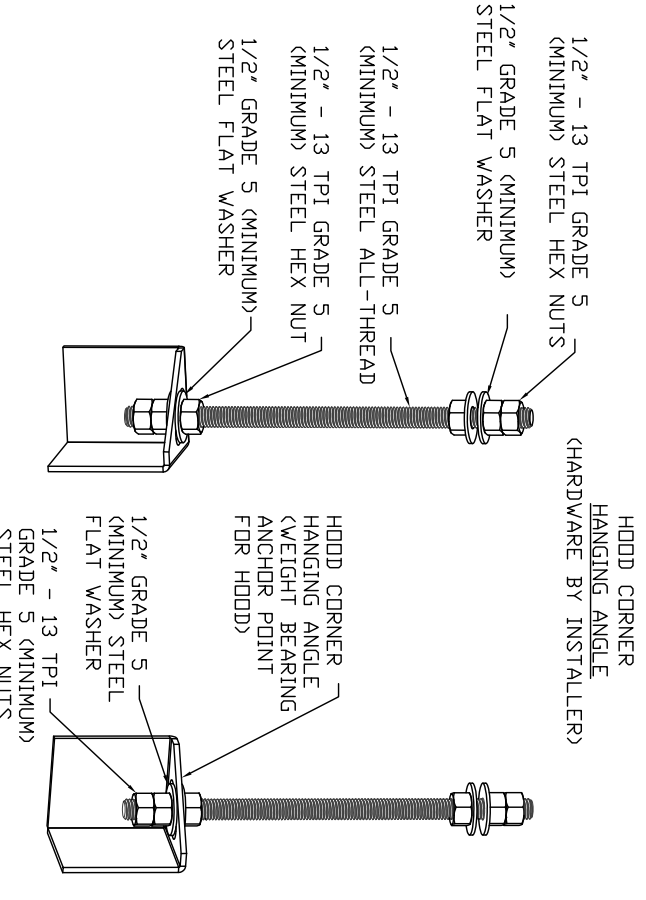
- 1) Merrychef Eikon (Turbo Chef-Electric)
  - 2) Vollrath Coyenne Countertop Warmer (Electric)
  - 3) Vollrath Countertop Commercial Induction Cooktop (Electric)
  - 4) Vollrath Italian Ponini Press (Electric)
- \*SEE SUBMITTAL SHEETS FOR EACH PIECE OF EQUIPMENT



**PLAN VIEW - HOOD #1**  
SCALE: 1/4" = 1'-0"

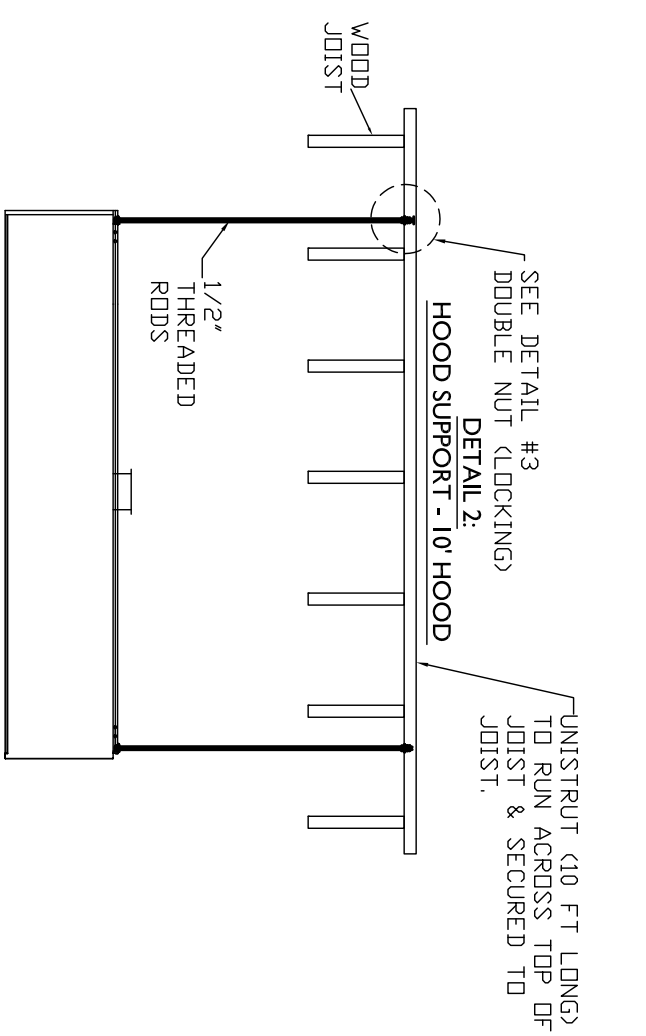
**SCOPE OF WORK:**  
OWNER HAS EXISTING ELECTRIC EQUIPMENT THAT IS USED FOR WARMING PRODUCT. OWNER WANTS HEAT & DOOR REMOVED FROM SPACE. SCOPE OF WORK IS TO INSTALL NEW TYPE 2 (NON-GREASE) HOOD SYSTEM OVER ELECTRIC EQUIPMENT & EXHAUST TO OUTSIDE OF BUILDING.

**DETAIL #1: HOOD HANGING ASSEMBLY**



**HANGING ANGLE MUST BE SUPPORTED WITH 1/2" - 13 TPI GRADE 5 (KINIKUM) ALL-THREAD SANDWICH HANGING ANGLES AND CEILING ANCHOR POINTS WITH 1/2" GRADE 5 (KINIKUM) STEEL FLAT WASHERS AND 1/2" - 13 TPI GRADE 5 (KINIKUM) HEX NUTS AS SHOWN. MUST BE SUPPORTED FROM ABOVE. HANGING ANCHORS AND ABOVE CEILING ANCHORS MAINTAIN 1/4" OF EXPOSED THREADS BENEATH BOTTOM HEX NUT. TORQUE ALL HEX NUTS TO 57 FT-LBS.**

**DETAIL #2: HOOD SUPPORT**



**HOOD SUPPORT REQUIREMENTS**

HOOD NUMBER	DEPTH	HEIGHT	WARRANTY
1	7'-0"	4'	4

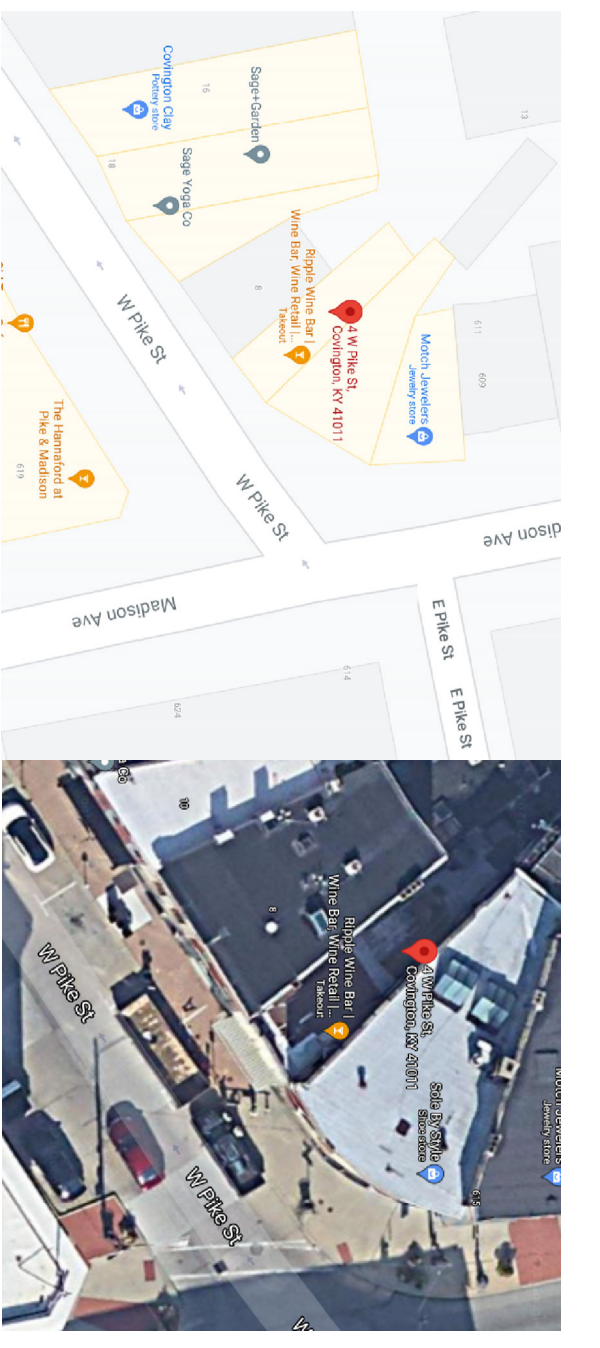
**AIR BALANCE SCHEDULE**

TAG	ROOMS SERVED	O.A. CFM	EXHAUST CFM
EFT-1	KITCHEN	-	875
AHU1/AHU2	BUILDING	+ 835 (MIN)	-
NET		0 CFM	

KITCHEN TO MAINTAIN A SLIGHTLY NEGATIVE TO BE BETWEEN -0.02" TO -0.027" WC PER MC COMMENTARY RECOMMENDATIONS

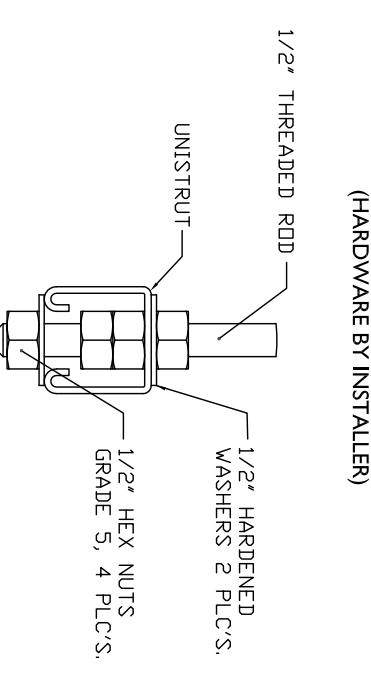
**Key Notes**

- 1) CAPTIVE-ARE ETL LISTED HOOD FOR TYPE II (NON-GREASE) & NOT LISTED. SEE COMMENTS FOR DIMS. (WEIGHTED OF HOOD 320 LBS)
- 2) WALL STAINLESS BEHIND HOOD & TO LEFT OF HOOD TO FRONT STORE WINDOW
- 3) CANOPY TYPE HOOD. TO OVERHANG ON FRONT BY 6" FROM COOKING SERVICE
- 4) WOOD WALL WITH SHEET ROCK & WALL STAINLESS.
- 5) HANGING ROD (SEE DETAILS #1, #2 & #3)
- 6) FAN AND LIGHT SWITCHES.
- 7) 10" DIA CAPTIVE-ARE STAINLESS STEEL DUCTWORK.
- 8) CAPTIVE-ARE VERTICAL SUPPORT (SEE DETAIL B)



**SITE / ROOF PLAN VIEW**

**DETAIL #3: HANGING ROD TO UNISTRUT**

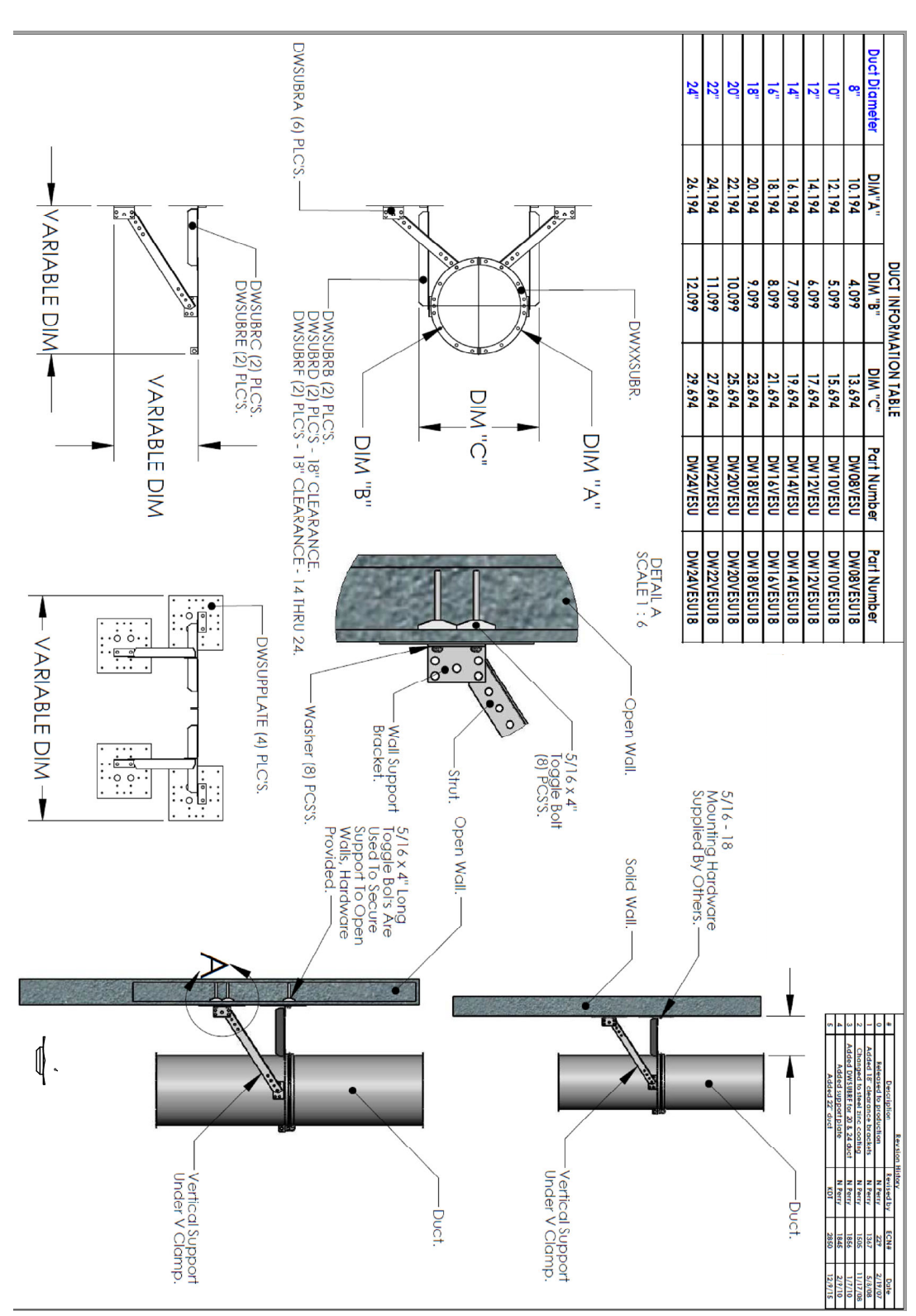


**RESPONSIBILITY MATRIX**

NO.	DESCRIPTION	OWNER	CONTRACTOR	ARCHITECT	MANUFACTURER
1)	REQUIREMENTS FOR FOOD SERVICE CONTRACTOR (F.E.C./OWNER)				
2)	HOOD & ALL ASSOCIATED EXHAUST IS PROVIDED & INSTALLED BY OWNER				
3)	HOOD SYSTEM TO BE STARTED UP BY CONTRACTOR				
4)	SMOKE TEST ON THE HOODS IN FRONT OF THE OWNER TO ENSURE SATISFACTION WITH COOKING EQUIPMENT ON HOODS				
5)	ALL WALL STAINLESS FOR OWNER & AROUND HOODS SHALL BE INSTALLED ALSO.				
6)	DIFFERENTLY BY ARCHITECT OR OWNER				
7)	SET CURB & FANS AS SHOWN ON DRAWINGS				
8)	INSTALLER TO ENSURE ALL HOOD AND FAN ACCESSORIES ARE INSTALLED SUCH AS AND ANY OTHER MISC. ITEMS SHIPPED WITH THE PRODUCT.				
9)	INSTALL CAPTIVE-ARE LISTED STAINLESS STEEL DUCT FROM HOOD TO FAN.				
10)	NOTES (REQUIREMENTS) FOR ELECTRICAL:				
11)	FIELD WIRE FROM BUILDING TO HOOD (1/2" DIA) POWER FOR EXHAUST FAN TO BE CONNECTED TO THE MAIN ELECTRICAL PANEL.				
12)	1 PHASE, 115V. FAN WILL ALSO BE CONNECTED TO LIGHTS CIRCUITRY FOR HOOD.				
13)	GENERAL CONTRACTOR (GC/OWNER) RESPONSIBILITIES:				
14)	GC/OWNER IS RESPONSIBLE TO HOLD A COORDINATION MEETING WITH ALL TRADES TO ENSURE UNDERSTANDING OF REQUIREMENTS AND MAKE SURE THERE ARE NO CONFLICTS THROUGHOUT THE PROJECT & ASSISTS AS REQUIRED CHANGES OR STRUCTURAL REQUIREMENTS TO INCLUDE BUT NOT LIMITED TO HOOD WALL READY TO ACCEPT WALL STAINLESS & HOOD. ANY REQUIREMENTS, AND ANY FINISHED SURFACES REQUIRED TO SHORE UP BUILDING OR STRUCTURE, AND ANY FINISHED AREA IS COMPLETELY CLEANED OUT TO ALLOW WORK TO BE PERFORMED.				
15)	MOVE ANY SMALL WARES TO ALLOW HOOD SYSTEM TO BE INSTALLED.				

**TYPE II STAINLESS STEEL EXHAUST DUCT**

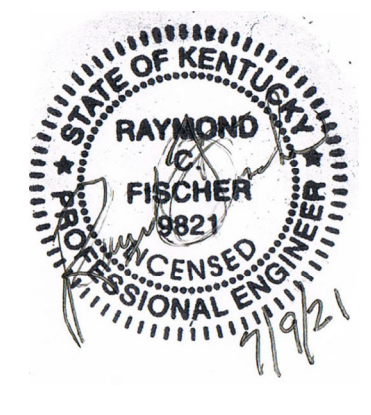
FURNISH SINGLE-WALL FACTORY BUILT DUCT FOR USE WITH KITCHEN HOODS, WHICH PRODUCTS SHALL BE ETL LISTED TO UL-1878 FOR VENTING AIR COMMERCIAL COOKING OPERATIONS AS DESCRIBED IN NFPA-96. THE DUCT WALL SHALL BE CONSTRUCTED OF .036" THICK TYPE 430 STAINLESS STEEL AND BEAT WALLEDE WELDED JOINTS. THE DUCT SHALL BE FULLY WELDED TO THE FAN ADAPTER PLATE AND THE FAN ADAPTER PLATE WILL BE FASTENED TO THE CURB USING A SUITABLY SIZED FASTENER PROVIDED BY OTHERS. SEE PAGE 12 OF THE INSTALLATION, OPERATION AND MAINTENANCE MANUAL FOR DETAILS. THE DUCT SHALL BE OPERATED AND MAINTAINED IN ACCORDANCE WITH THE INSTALLATION, OPERATION AND MAINTENANCE MANUAL. THE VEE CLEANS SHALL BE OF THE HEX-HEAD TYPE WITH FLANGED STOPS AND TAPERED LEAD IN THREADS FOR EASY STARTING. NUTS SHALL BE RETAINED BY MEANS OF A FIRE-LOADING CAGE TO SINGLE-WALL DUCT SHALL BE INSTALLED IN ACCORDANCE WITH THE MANUFACTURERS "INSTALLATION, OPERATION AND MAINTENANCE MANUAL". ETL LISTING AND STATE AND LOCAL CODES OUTSIDE OF THE BUILDING SHALL BE PROTECTED AGAINST ACCIDENTAL DAMAGE OR VANDALISM. SUPPORT VERTICALLY INSTALLED DUCT FROM THE BUILDING STRUCTURE USING RIGID STRUCTURAL SUPPORTS. ANCHOR SUPPORTS TO THE STRUCTURE BY WELDING OR FULLY INSTALLED DUCT FROM THE BUILDING STRUCTURE USING ABOVE METHOD OR USE DUCT MATE, WIRE ROPE & CLUTCHERS, PART NUMBERS W20 & Q20. 1/2" THREADED ROD AND SADDLES MAY ALSO BE USED FOR THE SUPPORT OF HORIZONTAL DUCT FROM THE BUILDING STRUCTURE TO THE FAN. THE DUCT SHALL BE PROTECTED FROM SWINGING OR MOVEMENT CAUSED BY FAN TORQUE OR VIBRATION.



CAPTIVE-ARE HOODS ARE BUILT IN COMPLIANCE WITH UL 710 AND NFPA 96 AND ARE RECOGNIZED BY ONE OR MORE OF THE FOLLOWING: ETL SANITATION LISTED ETL LISTED FILE# 3054864-001 HOOD SYSTEM IS FABRICATED & DESIGNED PER UL-710 STANDARDS

MANAGED BY:  
AIR SOLUTIONS, INC.  
1329 E. KEMPER RD  
CINCINNATI, OH 45246  
PH: (513) 860-5555

**RIPPLE**  
4 WEST PIKE STREET  
COVINGTON, KY 41011  
NEW COMMERCIAL HOOD IN KITCHEN



SHEET NO. **H-1**