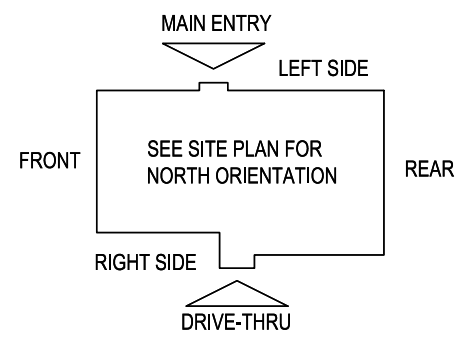


E5 HVAC PLAN
SCALE: 1/4" = 1'-0"



NOTE: ALL DUCTWORK TO BE LOCATED IN TRUSS SPACE WHERE POSSIBLE. SEE FRAMING PLAN.

HVAC SETPOINTS RECOMMENDED BY CORPORATE OPERATIONAL GUIDELINES:
 1. DINING: HEATING 70 DEGF, COOLING 72 DEGF
 2. KITCHEN: HEATING 65 DEGF, COOLING 74 DEGF

ALL MECHANICAL ROOF EQUIPMENT REQUIRES STRAPS TO RESIST THE WIND PRESSURE DETERMINED IN ACCORDANCE WITH THE BUILDING CODE. SEE STRUCTURAL PLANS FOR DETAILS.

DIFFUSER, REGISTER, AND GRILLE SCHEDULE									
TAG	SERVICE	TYPE	MATERIAL	THROW	FACE	NECK	MOUNTING	MANUFACTURER/MODEL	Notes
SD-1	SUPPLY	LOUVERED	STEEL	4-WAY	24X24	SEE PLAN	LAY-IN	CARNES SFP24	2, 4
SD-2 - NOT USED									
SD-3	SUPPLY	LOUVERED	STEEL	3-WAY	SEE PLAN	SEE PLAN	SURFACE	CARNES SKSA	2, 4
SD-4	SUPPLY	LOUVERED	STEEL	4-WAY	12X12	SEE PLAN	SURFACE	CARNES SKSA	1, 2, 4
SD-5	SUPPLY	PERFORATED	STEEL	PERFORATED	24X24	SEE PLAN	LAY-IN	CARNES SPRB24	2, 4
RG-1	RETURN	SQUARE EGGRATE	ALUMINUM	N/A	24X24	22x22	LAY-IN	CARNES RAPMF	2, 3, 4
EG-1	RETURN	LOUVERED GRILLE	STEEL	N/A	12X12	SEE PLAN	SURFACE	CARNES RTLAH	1, 2, 4
TG-1	TRANSFER	LOUVERED GRILLE	STEEL	N/A	SEE PLAN	SEE PLAN	SURFACE	CARNES RTLAH	2, 4
DIFFUSER NOTES:									
1. PROVIDE w/ ADJUSTABLE OPPOSED BLADE DAMPER									
2. VERIFY ALL DIFFUSERS AND RETURN GRILLE COLORS WITH OWNER AND ARCHITECT									
3. PROVIDE w/ 22X22 PLENUM BOX.									
4. ALL DIFFUSERS AND RETURNS LOCATED IN BLACK CEILING SHALL BE FLAT BLACK FINISH.									

© 2021

NEW CULVER'S RESTAURANT
6677 Flewellen Way
 Fulshear, TX 77441
 County of FORT BEND

12-8-21
 LOWELL J. LARSON
 105485
 LICENSED ARCHITECT
 State of Texas

OWNER: THORNCREEK HOSPITALITY LLC
 28050 Wind Hawk Drive
 Katy, TX 77494
 Brian Spolnick, Managing Member
 spolnick@thorncreek.com

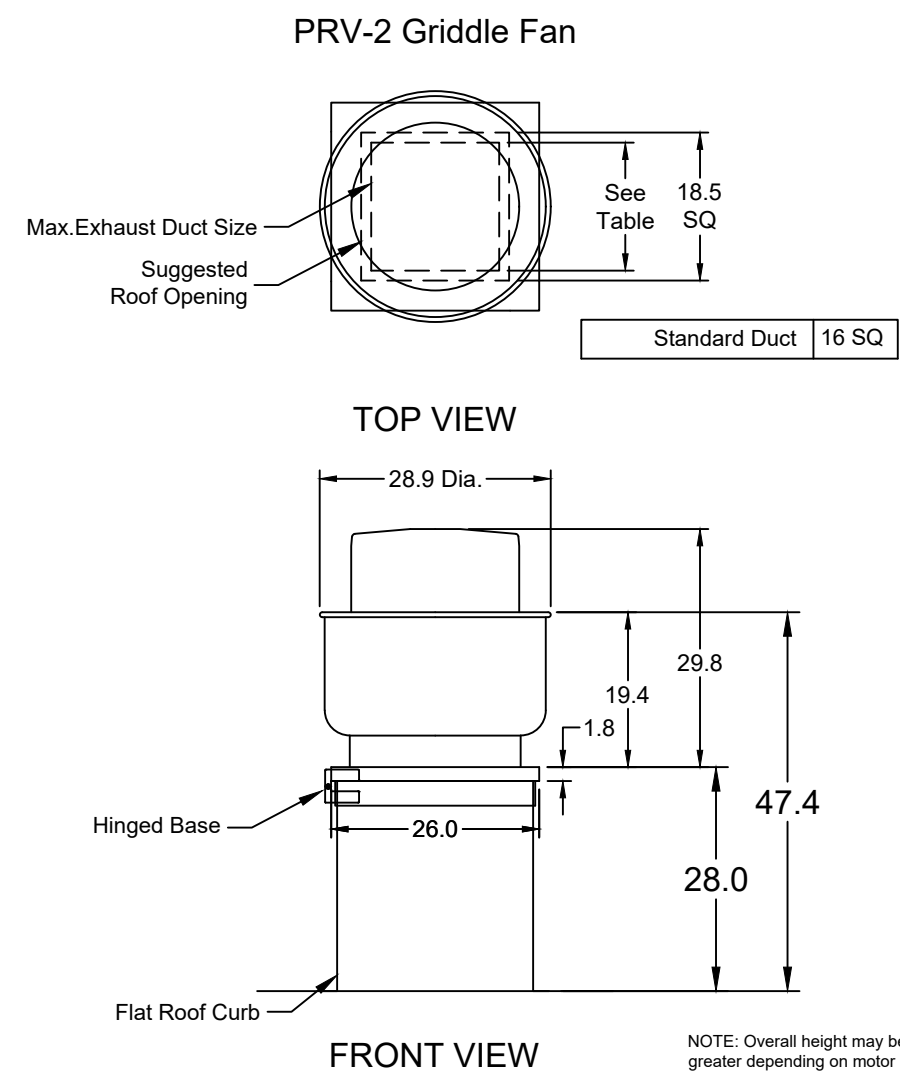
ARCHITECT: OLLMANN ERNEST MARTIN ARCHITECTS
 200 South State Street
 Belleville Illinois 61008
 815-544-7190 Phone

© OEMA
 All rights reserved; any copying, transmittal or disclosure subject to OEMA written approval.

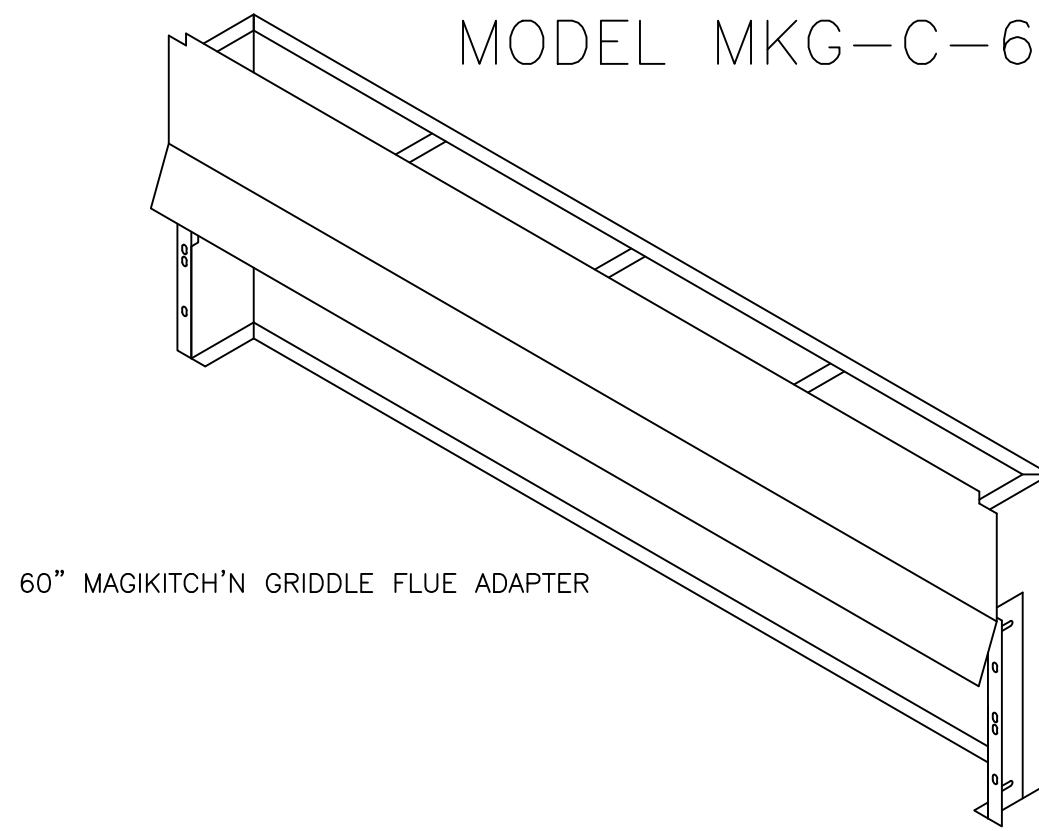
HVAC PLAN, DIFFUSER SCHEDULE

Revision: 12-03-2021
 Date: 12-03-2021

2021-079
M101

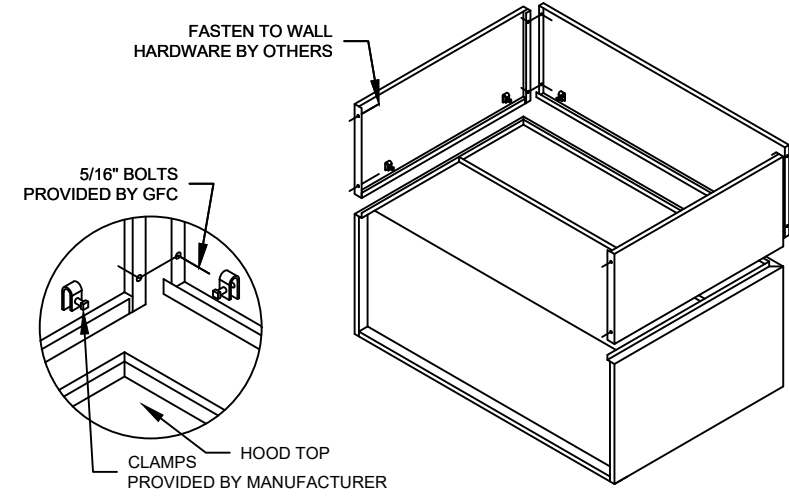


MUST USE WITH MAGIKITCH'N MODEL MKG-C-60



60" MAGIKITCH'N GRIDDLE FLUE ADAPTER

ENCLOSURE PANEL INSTALLATION DETAIL

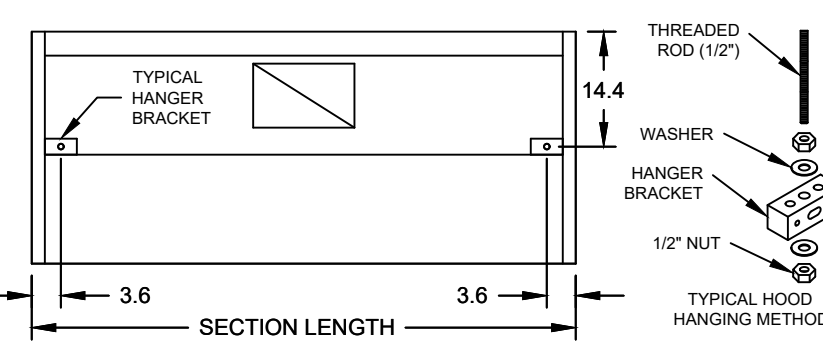


HOOD HANGING HEIGHT FOR FIRE SYSTEMS

VERIFICATION OF HOOD HANGING HEIGHT ABOVE FINISHED FLOOR (A.F.F.) IS REQUIRED FOR CORRECT PLACEMENT OF FIRE SYSTEM NOZZLES.

- RECOMMENDED HANGING HEIGHT = 60" FROM FINISHED FLOOR TO LOWER FRONT EDGE OF HOOD.
- OTHER HANGING HEIGHT = _____ FROM FINISHED FLOOR TO LOWER EDGE OF HOOD.

HOOD HANGER BRACKET DETAIL FOR BACKSHELF HOODS



GENERAL DRAWING NOTES

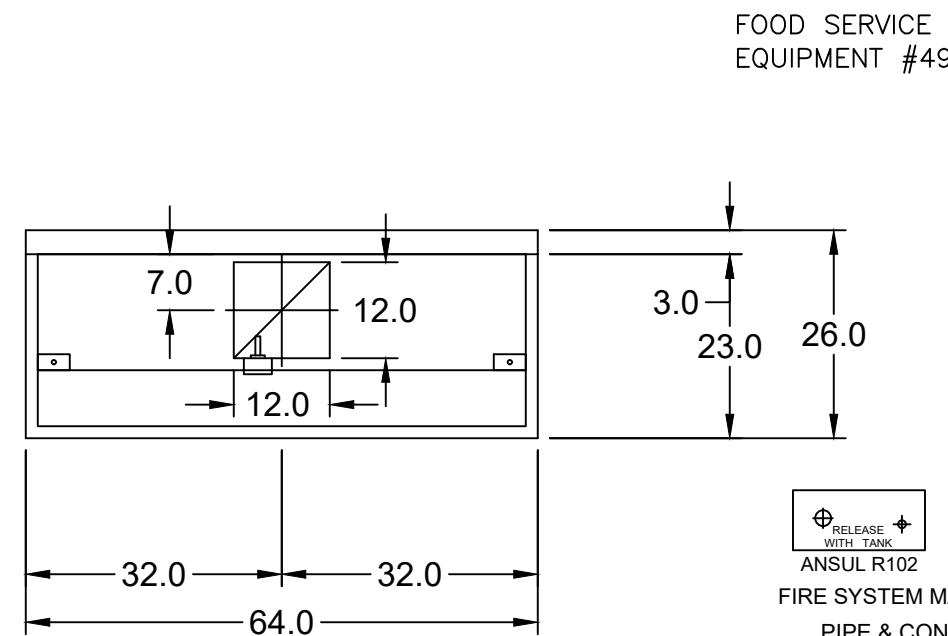
Verify building entry conditions or limitations for equipment access to space.
 Verify type and height of finished ceiling and if hood(s) may extend above finished ceiling (if required).
 Seismic installation and bracing of equipment is by others.
 Greenheck will not accept liability for problems that result from sub-standard installation. Including field electrical wiring that deviate from supplied diagrams, globe conditions (ductwork, fuel types and structural conditions) that GFC has not been notified of at the time of ordering. Or use of this equipment other than that for which it is designed.
 It is the responsibility of the purchaser to hire qualified personnel for installation and start-up of all equipment. Installation and start-up information is shipped with all equipment via the Installation, Operation and Maintenance Manual (IOM), also included is a troubleshooting guide. Have all start-up info available prior to any warranty claims and/or factory technical support.

VENTILATION SYSTEM NOTES

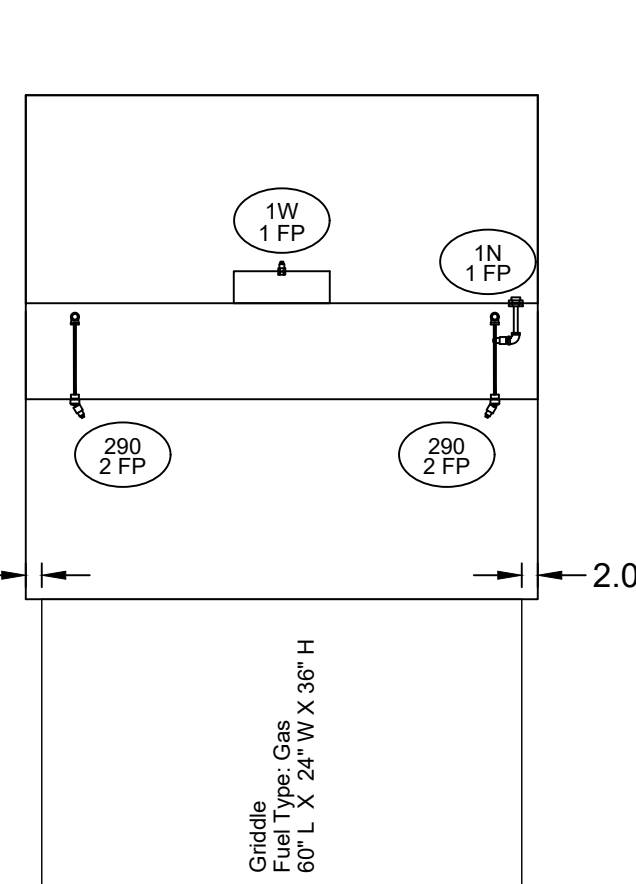
Greenheck ventilators are designed in compliance with all national codes: NFPA # 96, national electric code, BOCA, uniform mechanical code, international mechanical code, and southern building conference. See national evaluation report #436 for allowable values, and/or conditions of use concerning material presented in this document. Local codes may vary. It is the responsibility of the purchaser to submit drawings to local authorities.
 Exhaust and supply air volumes are to be maintained within -5% to +10% tolerance of values indicated. Static pressure(s) indicated are for the ventilator at the duct connection(s) only.
 The grease filter face velocities are based on the filter manufacturers recommendations for maximum grease extraction. Inlet opening air velocities for waterwash, dry cartridge and high velocity cartridge filters manufactured by Greenheck are designed to deliver maximum grease extraction.
 Hoods installation (by others unless otherwise noted) shall be in accordance with NFPA # 96 and applicable building codes.

PROPRIETARY INFORMATION NOTICE

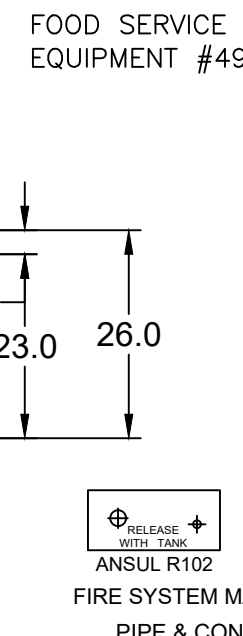
This document is and contains confidential trade secret information of the company and remains property of the company and is to be returned upon request. Neither it nor information it contains may be reproduced or disclosed to persons not having a need-to-know consistent with the purpose of the loan document without written permission.



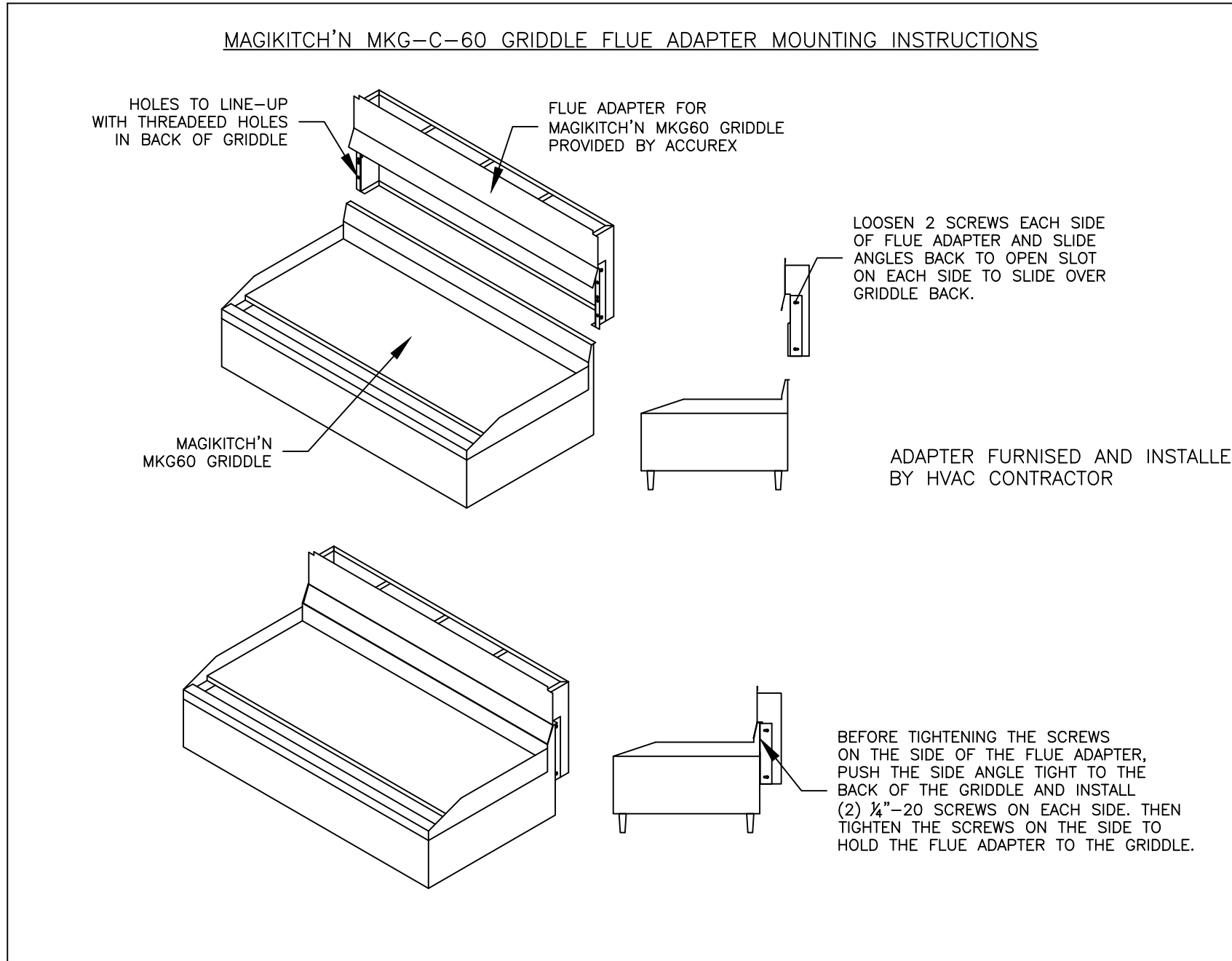
MARK: ITEM #49 PLAN VIEW



MARK: ITEM #49 ELEVATION VIEW

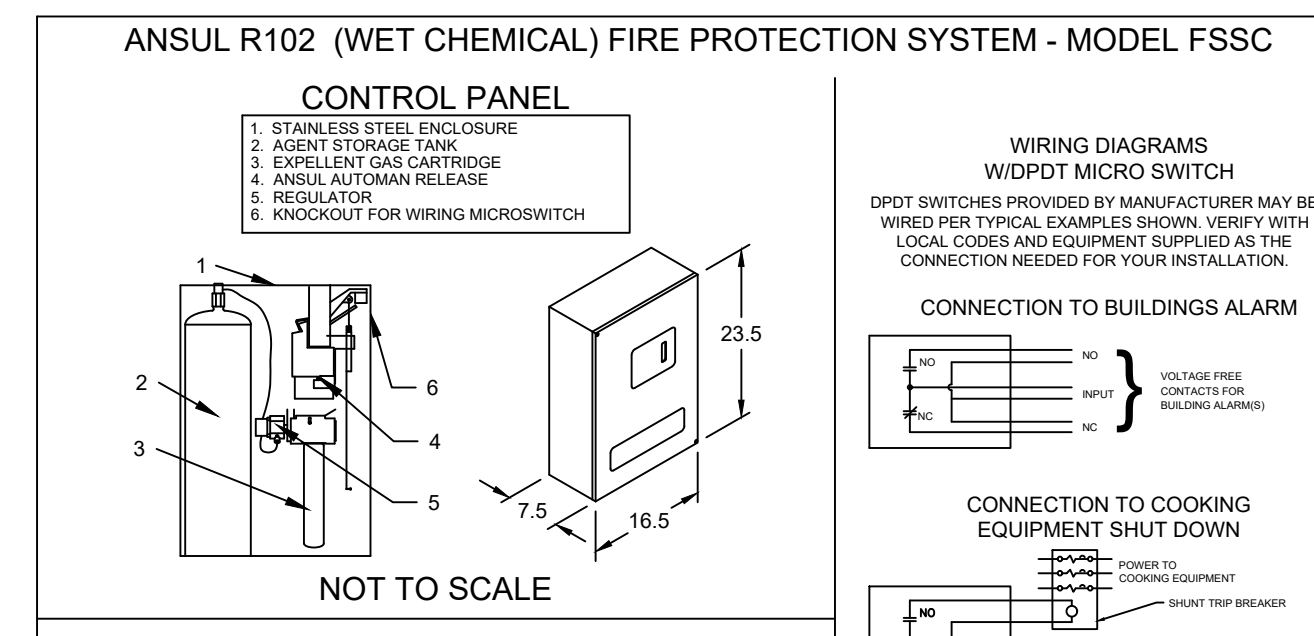


MARK: ITEM #49 SECTION VIEW



MAGIKITCH'N MKG-C-60 GRIDDLE FLUE ADAPTER MOUNTING INSTRUCTIONS

HOLES TO LINE-UP WITH THREADED HOLES IN BACK OF GRIDDLE. FLUE ADAPTER FOR MAGIKITCH'N MKG60 GRIDDLE PROVIDED BY ACCUREX.
 LOOSEN 2 SCREWS EACH SIDE OF FLUE ADAPTER AND SLIDE ANGLES BACK TO OPEN SLOT ON EACH SIDE TO SLIDE OVER GRIDDLE BACK.
 MAGIKITCH'N MKG60 GRIDDLE. ADAPTER FURNISHED AND INSTALLED BY HVAC CONTRACTOR.
 BEFORE TIGHTENING THE SCREWS ON THE SIDE OF THE FLUE ADAPTER, PUSH THE SIDE ANGLE TIGHT TO THE BACK OF THE GRIDDLE AND INSTALL (2) 1/2"-20 SCREWS ON EACH SIDE. THEN TIGHTEN THE SCREWS ON THE SIDE TO HOLD THE FLUE ADAPTER TO THE GRIDDLE.



Wet chemical fire protection system to be Ansul R-102, designed in compliance with UL 300 requirements.
 -Verification of all cooking equipment make, model and location required for all fire protection systems.
 -All fire system piping is standard to the right end of the hood unless a wall is located on the right end.
 -Anisul Automaton Release to be located within 60" of hood.
 The basic fire system will include the following:
 -Gas shut-off valve, if required, to be supplied by Manufacturer (up to 2" diameter as standard), and installed by a licensed plumber.
 -Micro switch to be supplied by Manufacturer for connection to, but not limited to, building alarm system(s), exhaust and supply fans and electrical power shut-down. Field wiring and connections to be performed by a licensed electrician.
 The basic fire system does NOT include the following:
 -Full dump test other than what is specified per the installation manual, or to satisfy a state or local code. Permit and testing fees are not included unless noted under the equipment schedule for the fire system.
 -More than two trips to the jobsite or special transportation, or overnight lodging requirements in remote areas. Normal travel distance is first 50 mi. (80.5 km) from office.
 -Special classes or additional labor for access to security sensitive areas.
 -Installation of gas shut-off valve.
 -Special drawings required to satisfy state or local code. Plan examination fees, PE or FS Approval Stamp.
 -Union labor, Government labor, or Prevailing wages required for final field hook-up.
 -Any and all electrical components/connections required to shut down fans, shut off device for electric cooking equipment (shunt trip breaker), or activate an alarm system, etc.
 -Any dismantling or reassembly required to gain access to the fire suppression piping located on the top of the hood.
 -Rough-in hidden conduit for remote pull station or gas valve (flush mounted pull station).
 -Installation of more than (1) remote pull station or distances greater than 20 ft. (6.1M).
 -Parts or labor required to correct piping due to cooking equipment changes or deviation from plans. OR Any changes for missing or additional parts other than those indicated on the Fire Suppression Detail.

Thank you for your interest in Accurex

SUBMITTAL

Please return one approved print to your Greenheck Representative including signature, date, and answers to all submittal "verify" notes and questions. Fabrication will not begin until after approved drawings are received.

APPROVED AS SUBMITTED
 APPROVED AS NOTED
 REJECTED - REVISE AND RESUBMIT

SIGNATURE _____ DATE _____

EQUIPMENT SCHEDULE												
TYPE 1 KITCHEN HOOD					MARK: ITEM#49							
HOOD NO.	ACCUREX MODEL STYLE / CONFIGURATION	HOOD DIMENSIONS			GREASE CUP OR DRAIN	HOOD TEMP. RATING	TOTAL WEIGHT	SECTION LOCATION	MARK: ITEM#49			
		SECTION LENGTH	WIDTH	HEIGHT					MARK: ITEM#49	MARK: ITEM#49		
1	XGEP-66-S SINGLE WALL EXHAUST ONLY LOW PROXIMITY	64 IN.	TOP 23 IN. FRONT 12 IN. BOT 8 IN. BACK 36 IN.	RIGHT	600 DEG F	136.0 LBS.	SINGLE					
ILLUMINATION DETAILS												
HOOD NO.	FIXTURE TYPE	QTY	INTENSITY FT CANDLES	TYPE / MODEL MATERIAL	QTY	LENGTH	HEIGHT					
1	NONE	NA	0 / 0 IN. CC	GREASE GRABBER STAINLESS STEEL	4	16 IN.	16 IN.					
EXHAUST PLENUM COLLARS												
HOOD SECTION #	COLLAR #	DISTANCE TO END (IN.)	WIDTH (IN.)	LENGTH (IN.)	DIAMETER (IN.)	VOLUME (CFM)	S.P. (IN. WC)	VELOCITY (FT/MIN)				
1	1.1	32	12	12	NA	1500	1.918	1500	281 CFM / FT			
TOTAL EXHAUST CFM - SECTION 1												
OPTIONS AND ACCESSORIES												
430 STAINLESS STEEL WHERE EXPOSED UL 710 LISTED W/ OUT EXHAUST FIRE DAMPER - UL #R25625 BACK NON-INTEGRAL AIR SPACE - 3 IN WIDE 28 IN HIGH CEILING ENCLOSURES - FRONT LEFT RIGHT - FIELD INSTALLED FACTORY MOUNTED EXHAUST COLLAR(S) THIS HOOD IS PART OF A TEMPERATURE INTERLOCK CONTROL SYSTEM INCLUDES PERFORMANCE ENHANCING LIP (PEL) TECHNOLOGY STANDING SEAM CONSTRUCTION FOR SUPERIOR STRENGTH EMBOSSED STAINLESS STEEL FINISH FOR HIGH CORROSION RESISTANCE EQUIPMENT SPECIFIC S/S FLUE ADAPTER												
SPECIAL DESIGN REQUESTS												
SDR #K1100145 - FLUE BYPASS HOOD												
FIRE SUPPRESSION SYSTEM												
MARK: FS FOR GRILL HOOD												
MANUFACTURER / MODEL	SUPPRESSANT TYPE	FLOW POINTS	SUPPLY LINE	DETECTION	MOUNTING							
ANSUL R-102 WET CHEMICAL	6 UTILIZED 11 AVAILABLE	CONTINUOUS	FUSIBLE LINK	REMOTE MOUNTED								
FULL INSTALLATION (INCLUDES PRE-PIPED HOODS) WITH DETECTION AND FACTORY COORDINATED INSTALL CHROME SLEEVES FOR FACTORY PROVIDED APPLIANCES DROPS - INCLUDED SUPPRESSION AGENT - INCLUDED - 3 GAL. - (1) 3 TANK(S) GAS VALVE - INCLUDED - MECHANICAL SHUTOFF VALVE, SUPPLIED UP TO 2" REMOTE PULL STATION - STANDARD - INSTALLATION AT SINGLE POINT OF EGRESS METAL BLOW-OFF CAPS - INCLUDED FIRE SYSTEM PERMIT - REQUIRED - FEE INCLUDED 360°F. FUSIBLE LINK OR AS TESTED AND INSTALLED BY LOCAL INSTALLER PER UL MANUAL												
FIRE SYSTEM PROTECTED HOOD(S) (UL-300) (MARK NAME / SECTION)												
GRILL HOOD SECTION 1 - (LENGTH 64.0 IN.) - LOW PROXIMITY HOOD - GREASE GRABBER FILTRATION SYSTEM												
Belt Drive Upblast Centrifugal Roof Exhaust Fan												
MARK: PRV-2												
Qty	Accurex Model	Volume (CFM)	SP (in wg)	FRPM	Operating Power (hp)	Weight (lb.)	Size (tp)	V/CP	Encr.	Motor RPM	Windings	FLA
1	XRUB-160XP-15	1500	2.337	2,411	1.29	171	1.5	208/60/3	CP	1725	1	6.6
OPTIONS AND ACCESSORIES												
UL/GUL 762 Listed - "Power Ventilators for Rest. Exh. Appliances" Switch, NEMA-1, (PN N11SND0-3-30) Toggle. Shipped with unit Larger curb cap size - 28" Square Roof curb-Galv., GPF-26-G28, Under sized 1.5" Total Hinged Base (Attached) High Temp Curb Seal Rated for Continuous duty at 2000F (Attached) Clean-out Port Grease Trap with Drain Connection (PN 475338) Heat Baffle (Attached) Bearings with Grease Fittings, L10 life of 100,000 hrs (L50 avg. life 500,000 hrs)												

© 2021

NEW CULVER'S RESTAURANT
 6677 Flewellen Way
 Fulshear, TX 77441
 County of FORT BEND

12-8-21
 LOWELL J. LARSON
 105485
 (504) 835-3333
 lowell@hmcreek.com

OWNER: THORNCREEK HOSPITALITY LLC
 28059 Wind Hawk Drive
 Katy, TX 77494
 Brian Spolnick, Managing Member
 spolnick@hmcreek.com

OWNER: OLLMANN ERNEST MARTIN ARCHITECTS
 200 South State Street
 Belleville Illinois 61008
 815-544-7190 Phone

© OEMA
 All rights reserved; any copying, transmission or disclosure subject to OEMA written approval.

GRIDDLE HOOD/EXHAUST SCHEDULE & DETAILS

2021-079

M202

Revision: 12-03-2021

Date: 12-03-2021

REV DESCRIPTION DATE

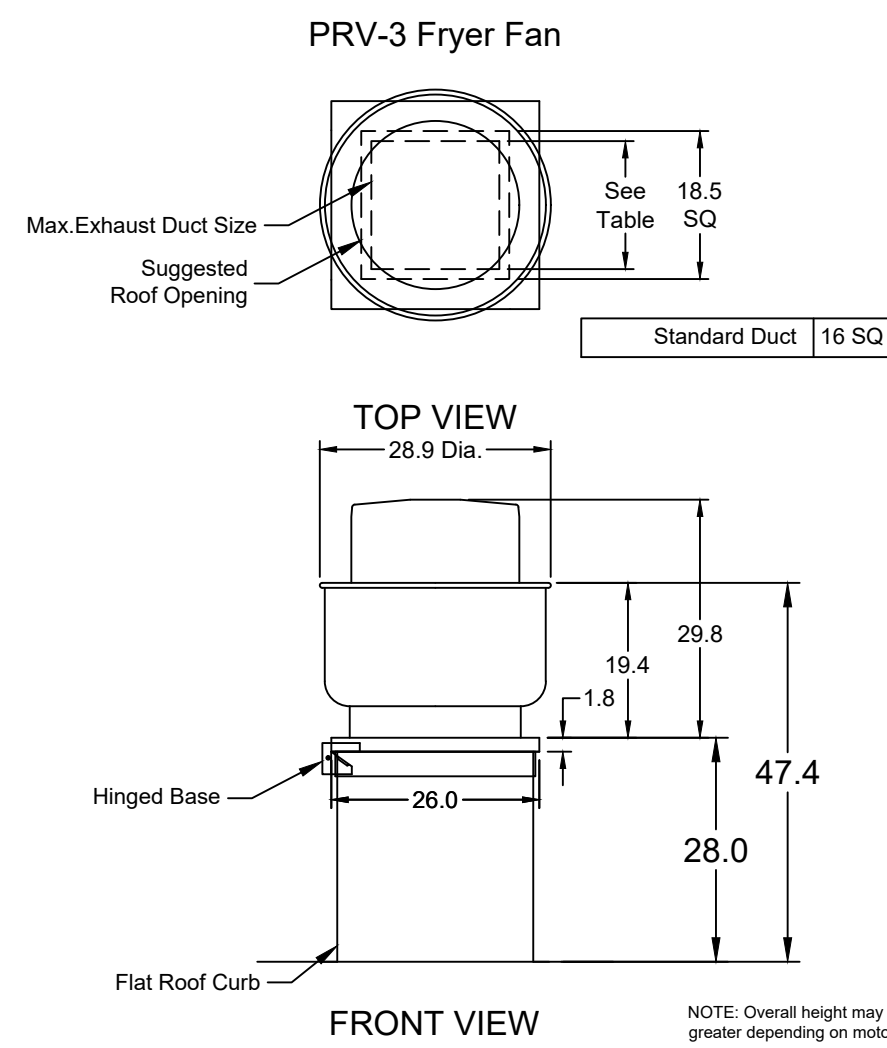
ACCUREX

CULVER'S MASTER TEMPLATE

SCALE 1/24

DATE 12/24/2021

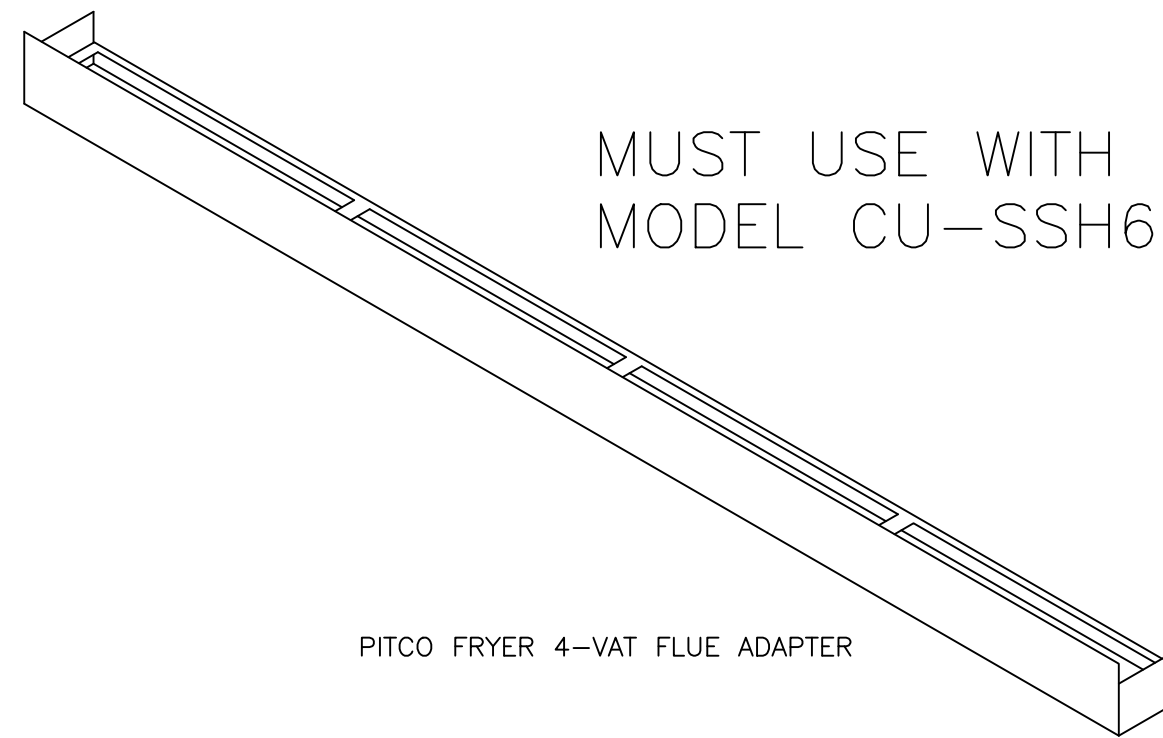
C28805A



FOOD SERVICE EQUIPMENT #59

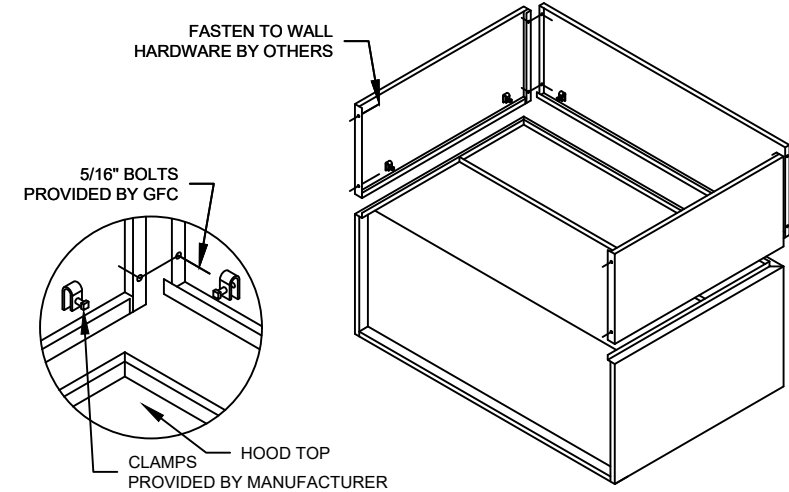
4-VAT FRYER BATTERY

MUST USE WITH PITCO MODEL CU-SSH60W



PITCO FRYER 4-VAT FLUE ADAPTER

ENCLOSURE PANEL INSTALLATION DETAIL



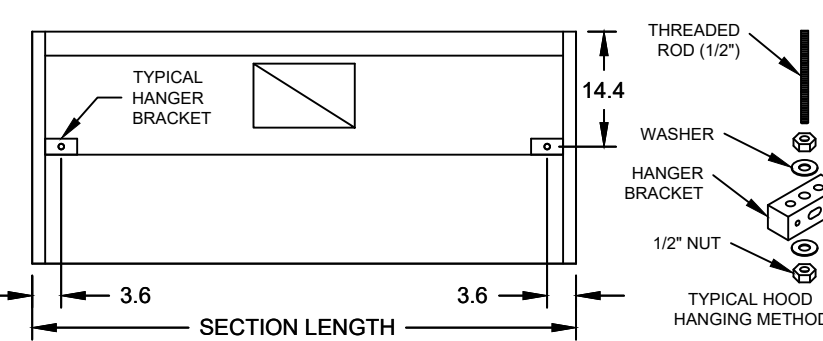
HOOD HANGING HEIGHT FOR FIRE SYSTEMS

VERIFICATION OF HOOD HANGING HEIGHT ABOVE FINISHED FLOOR (A.F.F.) IS REQUIRED FOR CORRECT PLACEMENT OF FIRE SYSTEM NOZZLES.

RECOMMENDED HANGING HEIGHT = 60" FROM FINISHED FLOOR TO LOWER FRONT EDGE OF HOOD.

OTHER HANGING HEIGHT = _____ FROM FINISHED FLOOR TO LOWER EDGE OF HOOD.

HOOD HANGER BRACKET DETAIL FOR BACKSHELF HOODS



GENERAL DRAWING NOTES

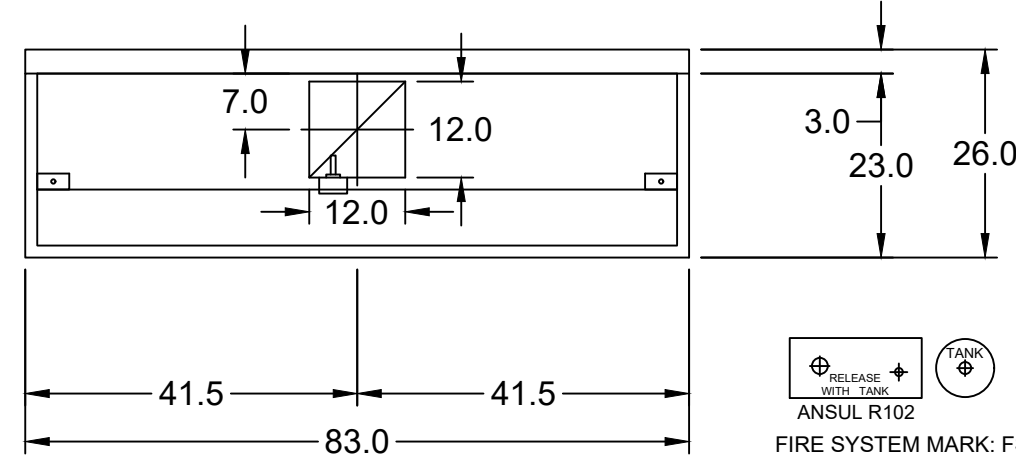
Verify building entry conditions or limitations for equipment access to space.
 Verify type and height of finished ceiling and if hood(s) may extend above finished ceiling (if required).
 Seismic installation and bracing of equipment is by others.
 Greenheck will not accept liability for problems that result from sub-standard installation. Including field electrical wiring that deviate from supplied diagrams, globe conditions (ductwork, fuel types and structural conditions) that GFC has not been notified of at the time of ordering. Or use of this equipment other than that for which it is designed.
 It is the responsibility of the purchaser to hire qualified personnel for installation and start-up of all equipment. Installation and start-up information is shipped with all equipment via the Installation, Operation and Maintenance Manual (IOM), also included is a troubleshooting guide. Have all start-up info available prior to any warranty claims and/or factory technical support.

VENTILATION SYSTEM NOTES

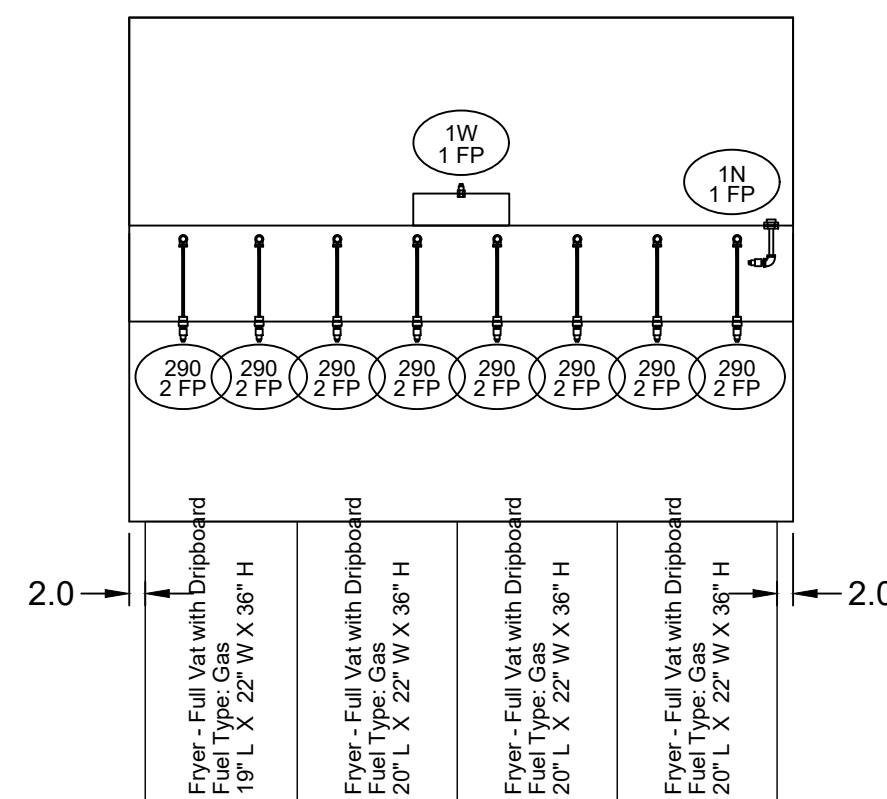
Greenheck ventilators are designed in compliance with all national codes: NFPA # 96, national electric code, BOCA, uniform mechanical code, international mechanical code, and southern building conference. See national evaluation report #436 for allowable values, and/or conditions of use concerning material presented in this document. Local codes may vary. It is the responsibility of the purchaser to submit drawings to local authorities.
 Exhaust and supply air volumes are to be maintained within -5% to +10% tolerance of values indicated. Static pressure(s) indicated are for the ventilator at the duct connection(s) only.
 The grease filter face velocities are based on the filter manufacturers recommendations for maximum grease extraction. Inlet opening air velocities for waterwash, dry cartridge and high velocity cartridge filters manufactured by Greenheck are designed to deliver maximum grease extraction.
 Hoods installation (by others unless otherwise noted) shall be in accordance with NFPA # 96 and applicable building codes.

PROPRIETARY INFORMATION NOTICE

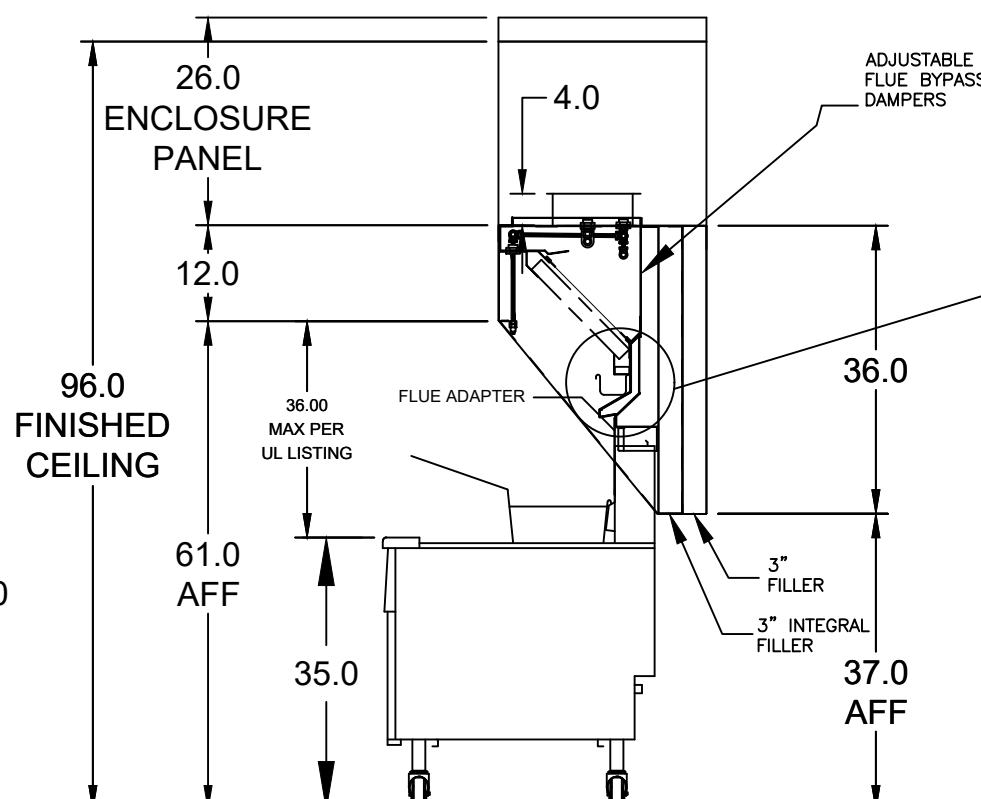
This document is and contains confidential trade secret information of the company and remains property of the company and is to be returned upon request. Neither it nor information it contains may be reproduced or disclosed to persons not having a need-to-know consistent with the purpose of the loan document without written permission.



MARK: ITEM #59 PLAN VIEW

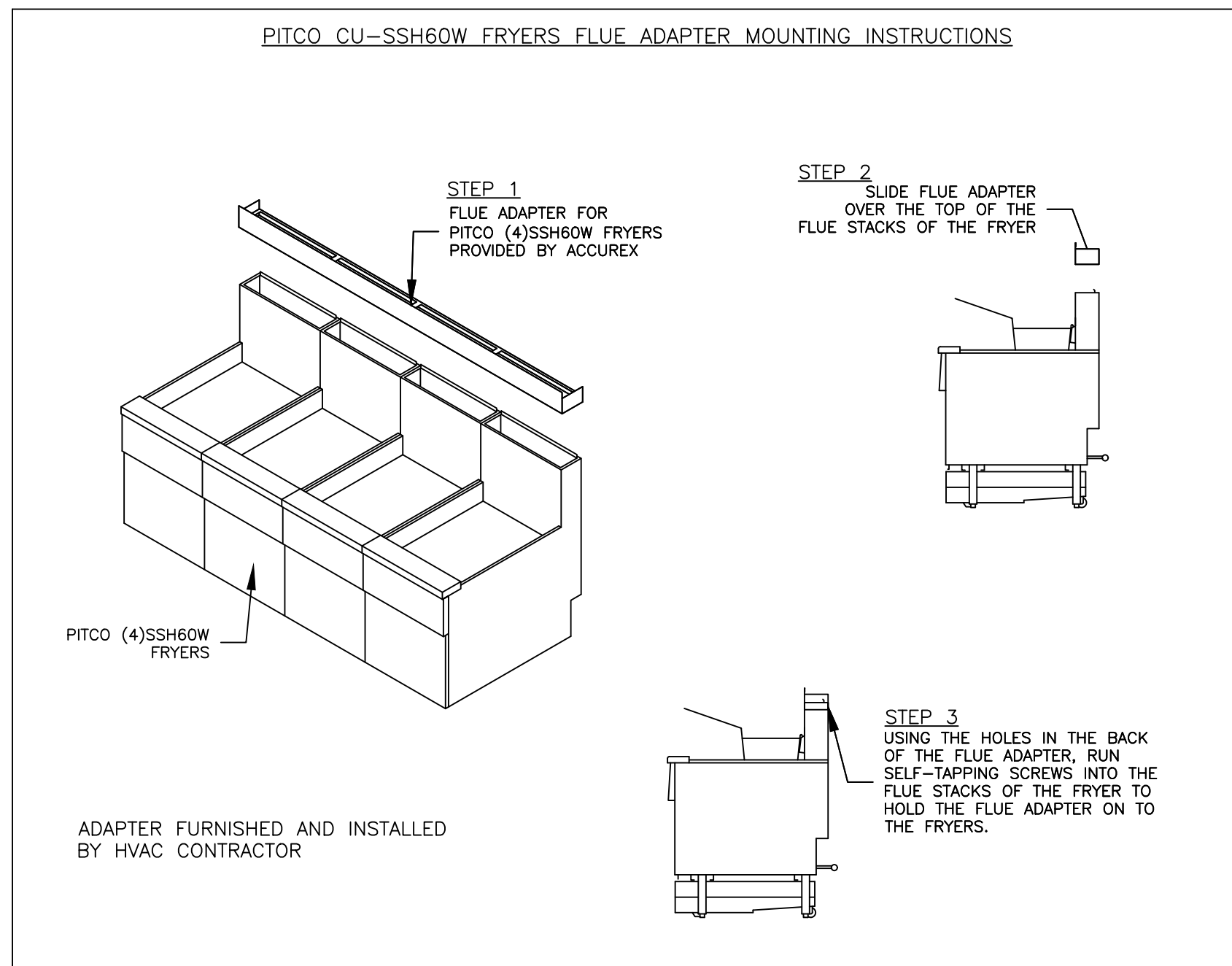


MARK: ITEM #59 ELEVATION VIEW

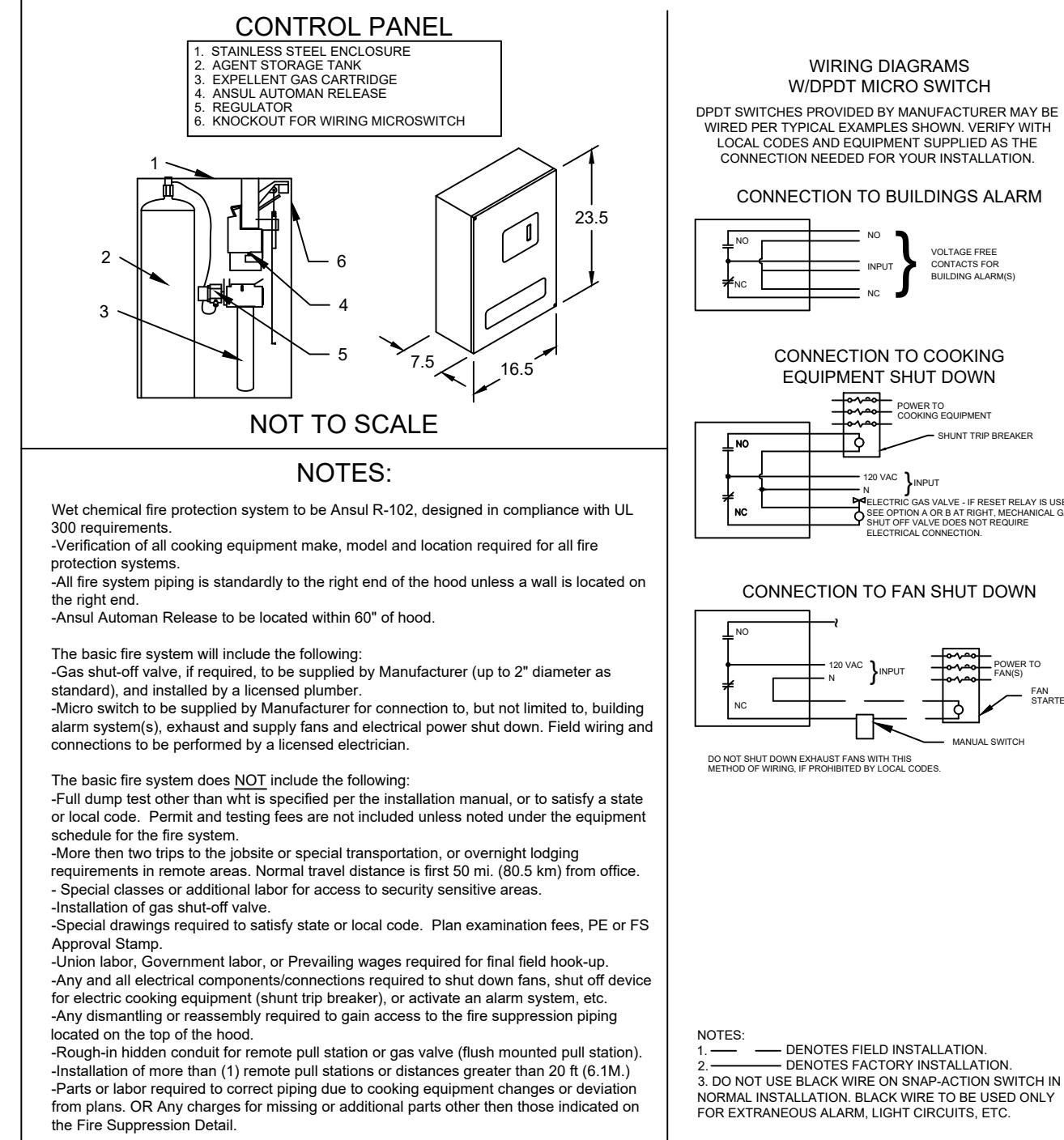


MARK: ITEM #59 SECTION VIEW

PITCO CU-SSH60W FRYERS FLUE ADAPTER MOUNTING INSTRUCTIONS



ANSUL R102 (WET CHEMICAL) FIRE PROTECTION SYSTEM - MODEL FSSC



Thank you for your interest in Accurex

SUBMITTAL

Please return one approved print to your Greenheck Representative including signature, date, and answers to all submital "verify" notes and questions. Fabrication will not begin until after approved drawings are received.

APPROVED AS SUBMITTED
 APPROVED AS NOTED
 REJECTED - REVISE AND RESUBMIT

SIGNATURE _____ DATE _____

EQUIPMENT SCHEDULE												
TYPE 1 KITCHEN HOOD					MARK: ITEM #59							
HOOD NO.	ACCUREX MODEL STYLE / CONFIGURATION	HOOD DIMENSIONS			GREASE CUP OR DRAIN	HOOD TEMP. RATING	TOTAL WEIGHT	SECTION LOCATION				
		SECTION LENGTH	WIDTH	HEIGHT								
1	XXEP-83-S SINGLE WALL EXHAUST ONLY LOW PROXIMITY	83 IN.	TOP 23 IN. FRONT 12 IN. BOT 3 IN. BACK 36 IN.		RIGHT	600 DEG F	169.0 LBS.	SINGLE				
ILLUMINATION DETAILS					GREASE FILTRATION DETAILS							
HOOD NO.	FIXTURE TYPE	QTY	INTENSITY	TYPE / MODEL	MATERIAL	QTY	LENGTH	HEIGHT				
1	NONE	NA	0 / 0 IN. OC	X-TRACTOR	STAINLESS STEEL	5	16 IN.	16 IN.				
EXHAUST PLENUM COLLARS												
HOOD SECTION #	COLLAR #	DISTANCE TO END (IN.)	WIDTH (IN.)	LENGTH (IN.)	DIAMETER (IN.)	VOLUME (CFM)	S.P. (IN. WC)	VELOCITY (FT/MIN)				
1.1		41.5	12	12	NA	1500	0.518	1500				
TOTAL EXHAUST CFM - SECTION 1		1500 = 217 CFM / FT										
OPTIONS AND ACCESSORIES												
430 STAINLESS STEEL WHERE EXPOSED UL 710 LISTED W/ OUT EXHAUST FIRE DAMPER - UL #R2625 BACK NON-INTEGRAL AIR SPACE - 3 IN WIDE 26 IN HIGH CEILING ENCLOSURES - FRONT LEFT RIGHT - FIELD INSTALLED FACTORY MOUNTED EXHAUST COLLAR(S) THIS HOOD IS PART OF A TEMPERATURE INTERLOCK CONTROL SYSTEM INCLUDES PERFORMANCE ENHANCING LIP (PEL) TECHNOLOGY STANDING SEAM CONSTRUCTION FOR SUPERIOR STRENGTH EMBOSSED STAINLESS STEEL FINISH FOR HIGH CORROSION RESISTANCE EQUIPMENT SPECIFIC S/S FLUE ADAPTER												
SPECIAL DESIGN REQUESTS												
SDR #K1100559 - NEW 4L FRYER SYSTEM												
FIRE SUPPRESSION SYSTEM MARK: FS FOR FRYER HOOD												
MANUFACTURER / MODEL	FLOW POINTS	SUPPLY LINE	DETECTION	MOUNTING								
ANSUL R-102 WET CHEMICAL	18 UTILIZED 22 AVAILABLE	CONTINUOUS	FUSIBLE LINK	RIGHT END REMOTE MOUNTED								
FULL INSTALLATION (INCLUDES PRE-PIPED HOOD(S) WITH DETECTION AND FACTORY COORDINATED INSTALL) CHROME SLEEVES FOR FACTORY PROVIDED APPLIANCES DROPS - INCLUDED SUPPRESSION AGENT - INCLUDED @ 4 GAL - (2) 3.0 TANK(S) GAS VALVE - INCLUDED - MECHANICAL SHUTOFF VALVE, SUPPLIED UP TO 2" REMOTE PULL STATION - STANDARD - INSTALLATION AT SINGLE POINT OF EGRESS METAL BLOW-OFF CAPS - INCLUDED FIRE SYSTEM PERMIT - REQUIRED - FEE INCLUDED 500' F. FUSIBLE LINK OR AS TESTED AND INSTALLED BY LOCAL INSTALLER PER UL MANUAL FIRE SYSTEM PROTECTED HOOD(S) (UL-300) (MARK NAME / SECTION#)												
EQUIPMENT SCHEDULE												
Belt Drive Upblast Centrifugal Roof Exhaust Fan MARK: PRV-3												
Qty	Accurex Model	Volume (CFM)	SP (in wg)	FRPM	Operating Power (hp)	Weight (Lb.)	Size (hp)	VICIP	End. Motor RPM	Windings	FLA	
1	XRUB-140-7	1500	1	1377	0.5	160	0.75	208/60/3	OP	1725	1	3.9
OPTIONS AND ACCESSORIES												
UL/UL782 Listed - "Power Ventilators for Rest. Esh. Appliances" Switch: NEMA-1, Toggle, Shipped with unit Larger curb cap size - 26" square Roof curb-Galv. GPF-26-G28, Undersized 1.5" total Hinged Base (Attached) Curb Seal (Attached) Clean-out Port Grease Trap with Drain Connection (PN 475538) Heat Baffle (Attached)												

© 2021

NEW CULVER'S RESTAURANT
6677 Flewellen Way
 Fulshear, TX 77441
 County of FORT BEND

12-8-21
 LOWELL J. LARSON
 105485
 LOWELL J. LARSON
 105485

OWNER: THORNCREEK HOSPITALITY LLC
 28050 Wind Hawk Drive
 Katy, TX 77484
 Brian Spolnick, Managing Member
 spolnick@thomcreek.com

OWNER: OLLMANN ERNEST MARTIN ARCHITECTS
 200 South State Street
 Belleville Illinois 61008
 815-544-7190 Phone

© OEMA
 All rights reserved; any copying, transmission or disclosure subject to OEMA written approval.

Revision: 12-03-2021

Date: 12-03-2021

FRYER HOOD/EXHAUST SCHEDULE & DETAILS

2021-079

M203

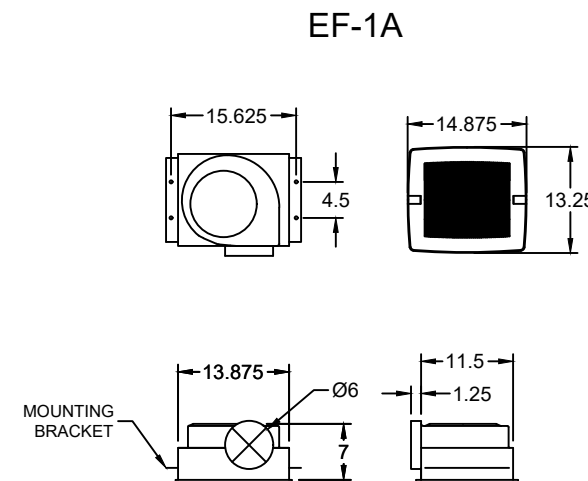
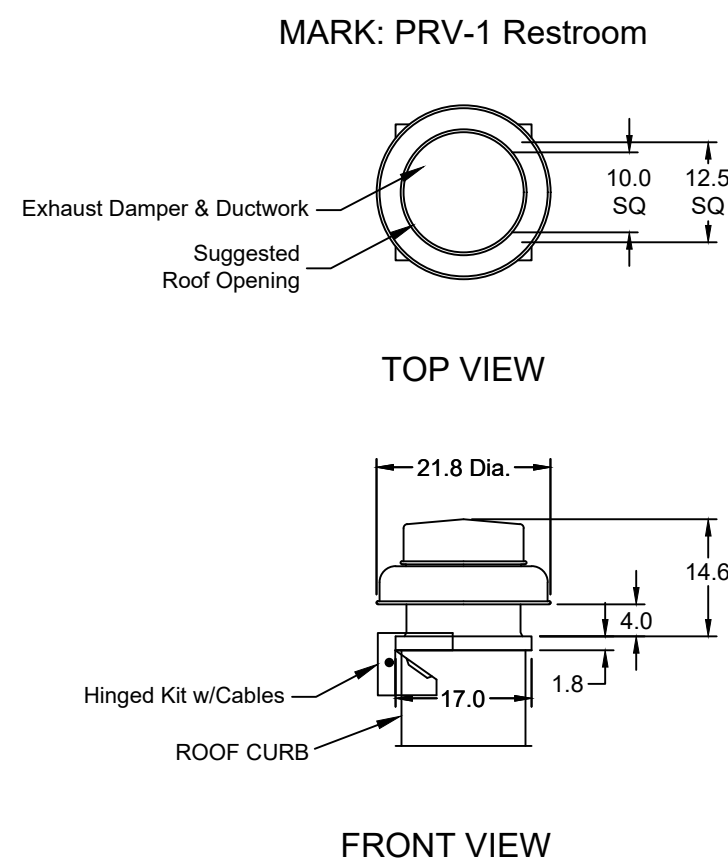
REV	DESCRIPTION	DATE

ACCUREX

CULVER'S MASTER TEMPLATE

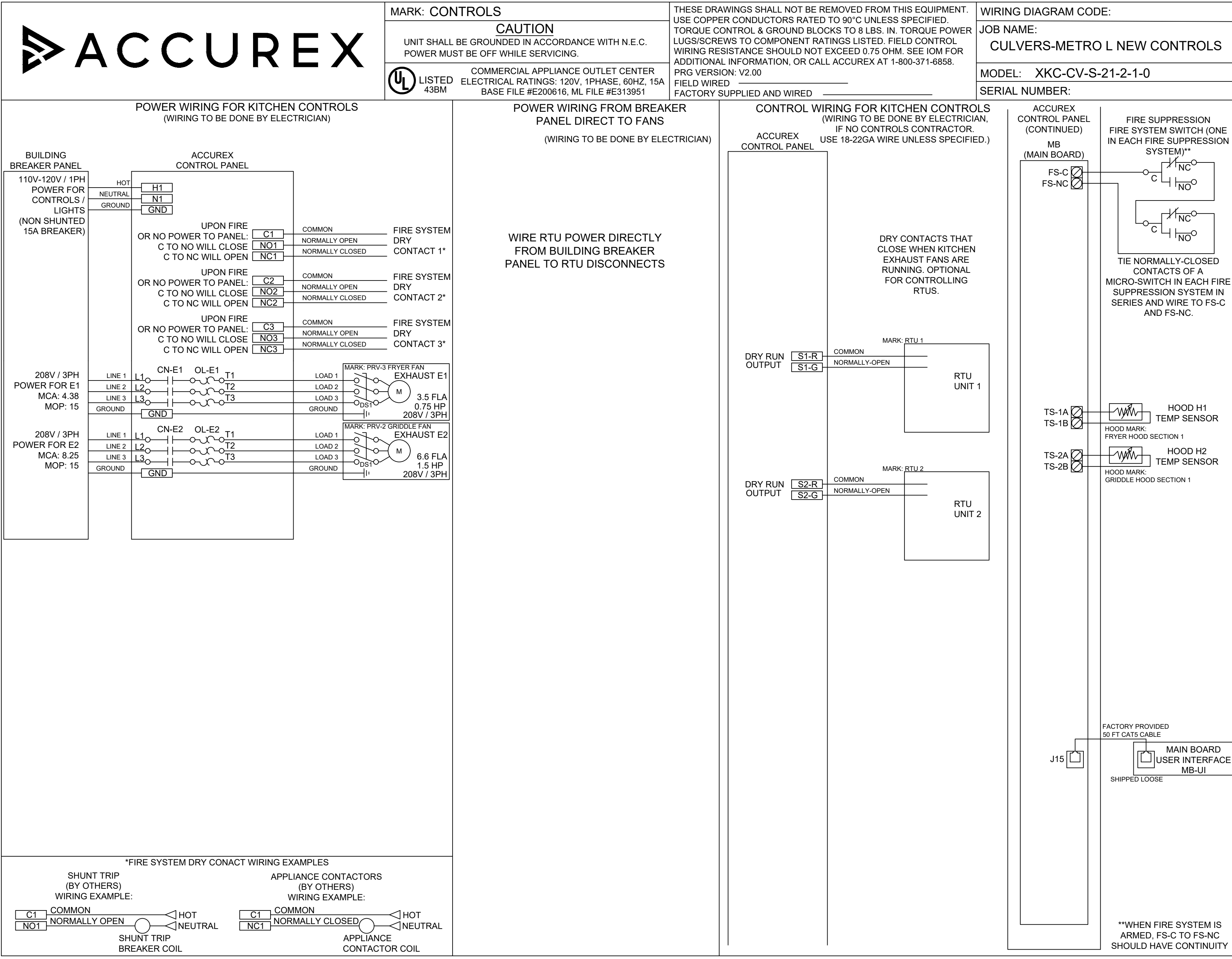
SCALE: 1/24

C28805B



EQUIPMENT SCHEDULE				
ELECTRICAL CONTROL BOX				
DESCRIPTION / ACCUREX MODEL	EXHAUST FAN QTY	SUPPLY FAN QTY	MARK: KFCC	POWER FREQUENCY
MOUNTING LOCATION (CONTROL PANEL / SWITCHES)				
KITCHEN FAN CONTROL CENTER / XFCC	2	0		60 CYCLE
SHIP LOOSE / SHIP LOOSE FOR REMOTE MOUNTING				
CONTROL PANEL ENCLOSURE - 16 GA 304 STAINLESS STEEL ENCLOSURE (NEMA-1) - DIMENSIONS 12 X 18 X 6				
WIRING DIAGRAM # T100-2 - 20				
STARTERS PROVIDED IN CONTROL PANEL - QTY 2				
2 POSITION FAN SWITCH - QTY 1				
INTEGRATED EXHAUST TEMPERATURE INTERLOCK SYSTEM				
-FACTORY MOUNTED EXHAUST TEMPERATURE SENSORS - QTY 2				
-COMPLIES WITH INTERNATIONAL MECHANICAL CODE 2006 SECTION 507.2.1.1				
TURN ON EXHAUST IN FIRE				
THERMAL OVERLOADS IN CABINET				
1 SPEED FAN(S)				
SPECIAL DESIGN REQUESTS				
SDR #K0800240 - USE KIT #852883. WIRING DIAG. #Z2905338				

EQUIPMENT SCHEDULE												
Direct Drive Centrifugal Roof Exhaust Fan MARK: PRV-1 Restroom												
Qty	Accurex Model	Volume (CFM)	SP (in wg)	FRPM	Operating Power (hp)	Weight (Lb.)	Size (hp)	V/CP	Encr.	Motor RPM	Windings	FLA
1	XRED-095-D	300	0.5	1479	0.060	43	0.0667	11560/1	OP	1550		NA
OPTIONS AND ACCESSORIES												
UL/ULC 705 Listed - "Power Ventilators"												
Switch, NEMA-1, Toggle, Shipped with unit												
Hinged Curb Cap Kit w/Cables (PN 851018) (Shipped Loose)												
Curb Seal (Attached)												
Damper, WD-100-PR-10X10, Gravity Operated (Loose)												
Solid State Speed Control, Mounted and Wired (PN 5WSSCC)												
Roof Curb-Galv., GFI-17-10-G12, Undersized 1.5" total												



EQUIPMENT SCHEDULE												
Ceiling Exhaust Fan MARK: EF-1A Exhaust Fan												
Qty	Accurex Model	Volume (CFM)	SP (in wg)	FRPM	Operating Power (hp)	Weight (Lb.)	Size (hp)	V/CP	Encr.	Motor RPM	Windings	FLA
	XCR-B80	75	0.125	855	0.01	10	0.0	11560/1	OP	900		NA
OPTIONS AND ACCESSORIES												
UL/ULC 705 Listed - Electric fan												
Solid State Speed Control, 6.0 amp, mounted and wired												
Round Hooded Wall cap, (PN WC-6) Shipped loose)												
Designer Grille												
Round duct connection												
Polypropylene Wheel Material												
Energy Star Rated												

FOR TECHNICAL SUPPORT ON ACCUREX CONTROLS PLEASE CALL ACCUREX TECHNICAL SUPPORT: 1-800-371-6858
SECONDARY CONTACTS ARE:
AARON VAN KREY 715.841.8521
TYLER SCHILLING 715.841.8749

Thank you for your interest in Accurex

SUBMITTAL

Please return one approved print to your Greenheck Representative including signature, date, and answers to all submittal "verify" notes and questions. Fabrication will not begin until after approved drawings are received.

APPROVED AS SUBMITTED
 APPROVED AS NOTED
 REJECTED - REVISE AND RESUBMIT

SIGNATURE _____ DATE _____

REV	DESCRIPTION	DATE

ACCUREX
 CULVER'S MASTER TEMPLATE
 SCALE 1/24
 C28805C

VENTILATION SYSTEM NOTES

Greenheck ventilators are designed in compliance with all national codes: NFPA # 96, national electric code, BOCA, uniform mechanical code, international mechanical code, and southern building conference. See national evaluation report #436 for allowable values, and/or conditions of use concerning material presented in this document. Local codes may vary. It is the responsibility of the purchaser to submit drawings to local authorities.

Exhaust and supply air volumes are to be maintained within -5% to +10% tolerance of values indicated. Static pressure(s) indicated are for the ventilator at the duct connection(s) only.

The grease filter face velocities are based on the filter manufacturers recommendations for maximum grease extraction. Inlet opening air velocities for waterwash, dry cartridge and high velocity cartridge filters manufactured by Greenheck are designed to deliver maximum grease extraction.

Hoods installation (by others unless otherwise noted) shall be in accordance with NFPA # 96 and applicable building codes.

PROPRIETARY INFORMATION NOTICE

This document is and contains confidential trade secret information of the company and remains property of the company and is to be returned upon request. Neither it nor information is contained may be reproduced or disclosed to persons not having a need-to-know consistent with the purpose of the loan document without written permission.

© 2021

NEW CULVER'S RESTAURANT
 6677 Flewellen Way
 Fulshear, TX 77441
 County of FORT BEND

12-8-21
 LOWELL J. LARSON
 105485
 LOVELL J. LARSON
 105485

OWNER: THORNCREEK HOSPITALITY LLC
 28050 Wind Hawk Drive
 Katy, TX 77494
 Brian Spolnick, Managing Member
 spolnick@thorncreek.com

OLLMANN ERNEST MARTIN ARCHITECTS
 200 South State Street
 Belvidere Illinois 61008
 815-544-7790 Phone

FAN SCHEDULE & DETAILS

© OEMA
 All rights reserved; any copying, transmittal or disclosure subject to OEMA written approval.

Revision: _____
 Date: 12-03-2021

2021-079
 M204