

2 MECH FLOOR PLAN

SCALE: 1/4"=1'-0"

MECH. KEY NOTES

- ① AIR CURTAIN, MOUNTED IN CEILING GRID. MECHANICAL CONTRACTOR SHALL INSTALL DIVERTER BOX. REFER TO DETAIL #1/M31 FOR MORE INFORMATION
- ② SET CONDENSING UNIT ON ROOF USING TWO CURBS PLUS CPES-I EQUIPMENT CURBS. SECURE CONDENSING UNIT TO CURBS ARRANGED IN PARALLEL. SET LONG SIDE OF CURB PARALLEL TO ROOF SLOPE FLASH INTO ROOF BY GC. FINAL LOCATION TO BE DETERMINED IN THE FIELD. ALL MAINTENANCE CLEARANCE OF NEW AND EXISTING EQUIPMENT SHALL BE MAINTAINED.
- ③ LOCATE AHU IN MOUNTED 7'-0" AFF TO BOTTOM OF UNIT. ROUTE REFRIGERANT PIPING ABOVE CEILING AND UP THRU ROOF TO CONDENSING UNIT. REFER TO ME21 FOR MORE INFORMATION.
- ④ EXISTING AIR DEVICE TO RELOCATED.
- ⑤ RUN 3/4" CONDENSATE LINE IN WALL DOWN TO P-26 FUNNEL DRAIN IN DRIVE THRU. REFER TO SHEET 1/P-101 FOR DRAIN LOCATION.
- ⑥ EXISTING AIR DEVICE TO REMAIN.
- ⑦ EXISTING AIR DEVICE TO BE RELOCATED AS SHOWN ON PLANS.
- ⑧ PROVIDE NEW AIR DEVICE. MAXIMUM LENGTH OF FLEXIBLE DUCT RUN-OUT IS 4 FEET, NO EXCEPTIONS. FIELD VERIFY & COORDINATE LOCATIONS PRIOR TO BID & CONSTRUCTION. RE-BALANCE AIR QUANTITY AS SHOWN ON PLAN. PROVIDE WITH MANUAL VOLUME DAMPER WITH ACCESSIBILITY. ANY DEFICIENCIES OR DISCREPANCIES SHALL BE REPORTED TO ARCHITECT/ENGINEER IMMEDIATELY.

HVAC LEGEND			
A-10-400	TYPE - NECK SIZE - CFM	[EPM]	EXHAUST FAN # (TYP)
[Symbol]	SPIN-IN FITTING WITH MANUAL BALANCING DAMPER, WITHOUT SCOOP	[ACR]	AIR CONDITIONING UNIT #
[Symbol]	SPIN-IN HARD FLEXIBLE DIFFUSER	[Symbol]	RETURN/EXHAUST (TYP)
[Symbol]	EXISTING EQUIPMENT, DUCT, & AIR DEVICE	[Symbol]	SUPPLY DIFFUSER, SQ FACE
[Symbol]	NEW EQUIPMENT, DUCT, & AIR DEVICE	[Symbol]	PLAN NOTE REFERENCE
[Symbol]	THERMOSTAT	[Symbol]	MANUAL VOLUME DAMPER



Chick-fil-A
 Chick-fil-A
 5200 Buffington Road
 Atlanta, Georgia
 30349-2998

TAN VU
 ARCHITECT

220 E. CENTRAL PKWY, STE 4000
 ALTAMONTE SPRINGS, FL 32701
 407.645.5008

SEAL:



CHICK-FIL-A
HATTIESBURG
 6099 US HIGHWAY 98
 HATTIESBURG, MS 39402

FSU#01613

BUILDING TYPE / SIZE: S04-152

RELEASE: PRINTED FOR CONSTRUCTION

REVISION SCHEDULE

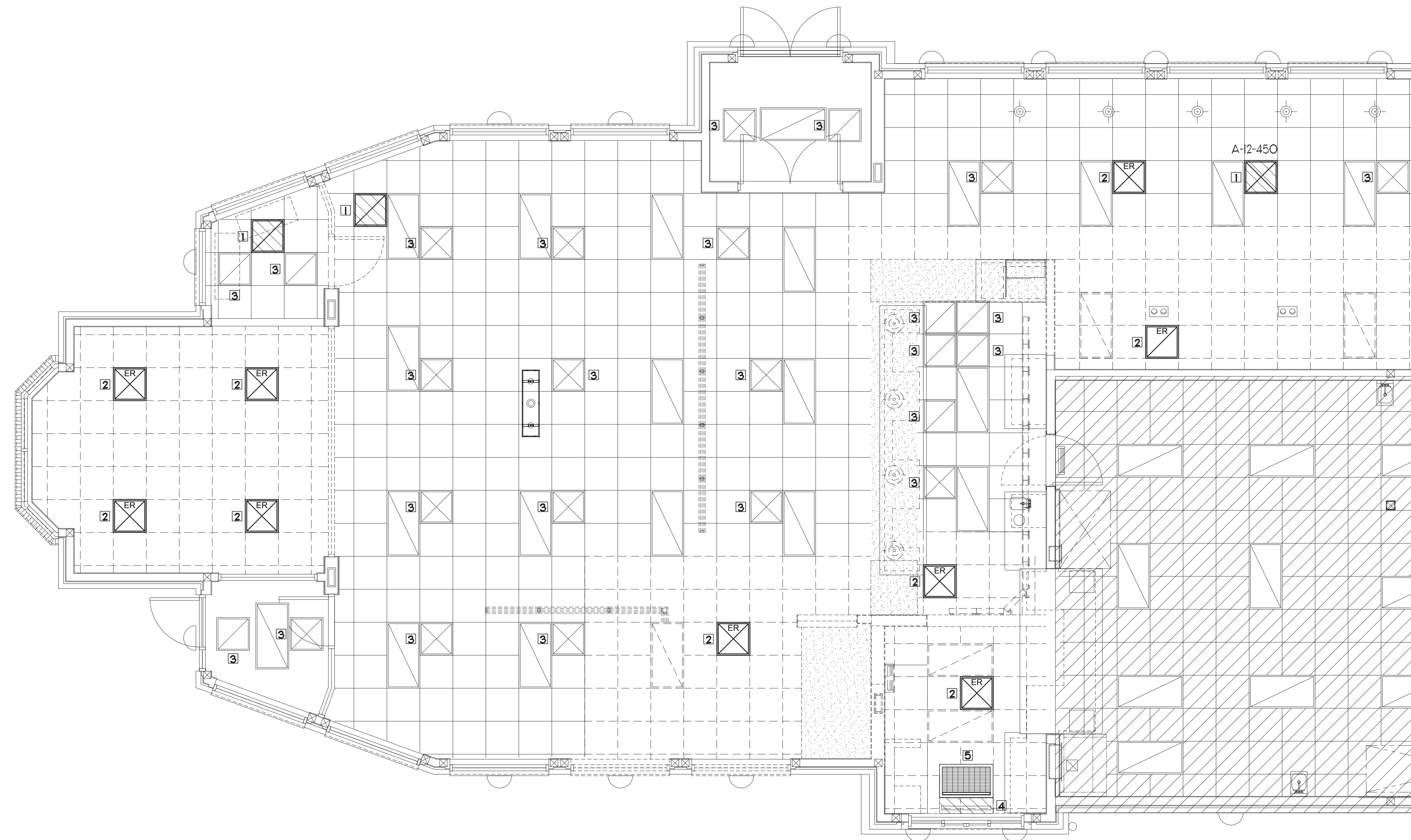
NO.	DATE	DESCRIPTION

CONSULTANT PROJECT # 2022.1062
 DATE MAY 2023
 DRAWN BY AE
 CHECKED BY DAK

Information contained on this drawing and in all digital files produced for above named project may not be reproduced in any manner without express written or verbal consent from the project architect.

SHEET MECHANICAL FLOOR PLAN
 SHEET NUMBER

M1.1



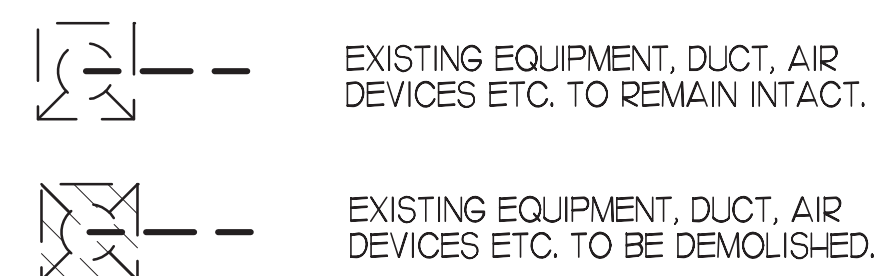
I MECH DEMOLITION PLAN

SCALE: 1/4"=1'-0"

DEMOLITION KEY NOTES

- 1 EXISTING AIR DEVICE TO BE DEMOLISHED.
- 2 EXISTING AIR DEVICE TO BE RELOCATED.
- 3 EXISTING AIR DEVICE TO REMAIN.
- 4 EXISTING WALL MOUNTED AIR CURTAIN TO BE DEMOLISHED. SEE SHEET M3.1 FOR NOTES REGARDING NEW AIR CURTAIN TO BE INSTALLED
- 5 EXISTING AIR CURTAIN TO BE RELOCATED.

DEMOLITION LEGEND

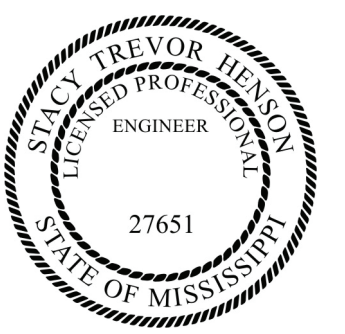


Chick-fil-A
 Chick-fil-A
 5200 Buffington Road
 Atlanta, Georgia
 30349-2998

TAN VU
 ARCHITECT

220 E. CENTRAL PKWY, STE 4000
 ALTAMONTE SPRINGS, FL 32701
 407.645.5008

SEAL:



CHICK-FIL-A
HATTIESBURG

6099 US HIGHWAY 98
 HATTIESBURG, MS 39402

FSU#01613

BUILDING TYPE / SIZE: S04-152

RELEASE: PRINTED FOR

CONSTRUCTION

REVISION SCHEDULE

NO.	DATE	DESCRIPTION

CONSULTANT PROJECT # 2022.1062

DATE MAY 2023

DRAWN BY AE

CHECKED BY DAK

Information contained on this drawing and in all digital files produced for above named project may not be reproduced in any manner without express written or verbal consent from the project representative.

SHEET MECHANICAL DEMOLITION FLOOR PLAN

SHEET NUMBER

M1.0

AIR DEVICE SCHEDULE						
MARK	DESCRIPTION	LOCATION	NECK SIZE	FACE SIZE	FRAME TYPE	REMARKS
A	PRICE MODEL APDC ALUMINUM SUPPLY AIR DIFFUSER WITH INDIVIDUALLY ADJUSTABLE CURVED AIR PATTERN CONTROLLERS.	DINING AREA KITCHEN TEAM MEMBER	SEE PLAN	24X24	LAY-IN	L2
NOTES	<ul style="list-style-type: none"> MECHANICAL CONTRACTOR SHALL PURCHASE THE AIR DEVICES DIRECTLY FROM TOM BARRROW COMPANY. CONTACT MR. SCOTT GEORGE AT 404-351-0101, FOR PRICING AND AVAILABILITY. AIR DEVICES NOT PURCHASED THRU TOM BARRROW COMPANY WILL NOT BE ACCEPTED. 					
REMARKS	<ol style="list-style-type: none"> STANDARD OFF WHITE FINISH. FACTORY INSULATED R-6 BACKPAN. 					

AIR DOOR SCHEDULE									
MARK	CFM	VELOCITY	HEATING CAP	HP	AREA SERVED	MODEL	MANUFACTURER	REMARKS	
RELOCATED AD#1	1977	2443 FPM	10 KW	3/4	DRIVE THRU	CHA-136E	POWERED-AIRE	L2,3	
NEW AD#2	1765	2670 FPM	10 KW	3/4	DRIVE THRU	CHA-148E	POWERED-AIRE	L2,3,4	
NOTES	<ul style="list-style-type: none"> CHICK-FIL-A HAS A NATIONAL ACCOUNT WITH TOM BARRROW COMPANY FOR THE AIR DOORS. THE MECHANICAL CONTRACTOR SHALL PURCHASE THE AIR DOORS DIRECTLY FROM TOM BARRROW COMPANY. CONTACT MR. SCOTT GEORGE AT 404-351-0101, FOR PRICING AND AVAILABILITY. AIR DOORS NOT PURCHASED THRU TOM BARRROW COMPANY WILL NOT BE ACCEPTED. 								
REMARKS	<ol style="list-style-type: none"> FACTORY PROVIDED, WIRED, AND UNIT MOUNTED SPEED CONTROLLER LOCATED ABOVE CEILING. FACTORY WIRED DISCONNECT. FACTORY PROVIDED, FIELD INSTALLED BY MC, REMOTE W ALL SWITCHES FOR HEATING ON/OFF AND FAN ON/AUTO SWITCH. SEE DETAIL, AIR CURTAIN WIRING DIAGRAM. PROVIDE WITH A DIVERTER BOX. 								

DUCTLESS SPLIT SYSTEM HEAT PUMP UNIT SCHEDULE														
MARK	COOLING CAPACITY (MBH)		EFFICIENCIES		FAN SECTION (CFM)		ELECTRICAL DATA			R-410A MODEL		WFR	WEIGHT	
	MIN	MAX	SEER2	SUPPLY	CIRCUIT AMPACITY	MOCP	VOLTAGE	AHU	CU	AHU	CU	AHU	CU	
AHU1/ACH1 (NEW)	110	99.0	19.2	699-830	2.4	35	208/1/60	AC036BNTDCH	AC036BKADCH	SAMSUNG	40.6 LBS	189.6 LBS		
NOTES	<ul style="list-style-type: none"> MECHANICAL CONTRACTOR SHALL PURCHASE THE SPLIT SYSTEM HEAT PUMP THROUGH POWERS OF ARKANSAS (POA) CONTACT CHAD FISHER WITH POA AT 479-927-9999 													
REMARKS	<ol style="list-style-type: none"> ELECTRICIAN TO PROVIDE NON-FUSED DISCONNECT. MECHANICAL TO PROVIDE AND INSTALL REFRIGERANT PIPING AS PER MFR RECOMMENDATIONS. PROVIDE ENGRAVED PLASTIC LABEL AT AHU1 AND CU1 WITH HIGH WHITE LETTERS ON A BLACK BACKGROUND RIVETED TO UNIT CABINET. PROVIDE WITH ADEQUATE REFRIGERANT LINE SET. FIELD VERIFY DISTANCE FROM WHERE CONDENSER IS TO BE SET TO AIR HANDLER LOCATION PRIOR TO ORDERING. PROVIDE WITH FACTORY WIRED WALL THERMOSTAT, MODEL MMR-WG00LN, NEXT TO POWERED AIRE DOOR CONTROL PANEL. USE TWO-WIRE, STANDARD, NONPOLAR CONTROL WIRE TO CONNECTOR COM2. PROVIDE WITH FACTORY FRONT AND BACK WIND BAFFLES FOR LOW AMBIENT CONDITIONS. PROVIDE MIM-B4 CONNECTOR AT INDOOR UNIT CONNECTOR CNB3, WIRE MIM-B4 TERMINALS 5 AND 6 TO SPARE POLE ON RELAY R-1 IN SLMCAOST T-500 PANEL. (TERMINALS 11 AND 7 RESPECTIVELY). 													

4. SECTION C1500 - MECHANICAL SPECIFICATIONS

SECTION C1500 ELECTRICAL GENERAL PROVISIONS

PART 1 - GENERAL

- 1.01 WORK INCLUDED
- A. PROVIDE ALL MATERIALS, LABOR AND EQUIPMENT REQUIRED TO FINISH AND INSTALL A COMPLETE ELECTRICAL SYSTEM AS INDICATED ON DRAWINGS AND AS SPECIFIED HEREIN.
- 1.02 REGULATORY REQUIREMENTS
- A. EQUIPMENT FURNISHED SHALL BE UL LISTED WHERE SUCH LABEL IS AVAILABLE. INSTALLATION SHALL CONFORM TO UL STANDARDS WHERE APPLICABLE.
- B. ELECTRICAL WORK SHALL BE INSTALLED IN ACCORDANCE WITH DRAWINGS AND SPECIFICATIONS, NEC AND NFPA CODES IN EFFECT AT PROJECT LOCATION, STATE AND LOCAL ELECTRICAL AND BUILDING CODES AND SPECIAL CODES HAVING JURISDICTION OVER SPECIFIC PORTIONS WITHIN COMPLETE INSTALLATION.
- C. OBTAIN PERMITS AND CERTIFICATES OF APPROVAL FROM ALL AUTHORITIES HAVING JURISDICTION OVER THE INSTALLATION AND PAY ALL FEES REQUIRED.
- 1.03 SUBMITTALS
- A. SUBMIT LIST OF MATERIALS AND EQUIPMENT PRIOR TO MANUFACTURE. ORDER OR INSTALLATION AND WITHIN TWENTY DAYS AFTER AWARD OF CONTRACT FOR APPROVAL. INCLUDE EACH ITEM OF MATERIAL AND EQUIPMENT WHETHER OR NOT SHOP DRAWINGS ARE ALSO REQUIRED. LIST SHALL INCLUDE NAME OF MANUFACTURER, CATALOG NUMBER AND OTHER COMPLETE IDENTIFICATION AS WELL AS DIMENSIONS AND DETAILED DATA. SUBMITTALS SHALL INCLUDE FOR THE FOLLOWING:
- LIGHTING FIXTURES
 - PANELBOARDS/BREAKERS
 - WIRING DEVICES AND DEVICE PLATES
 - ENCLOSED SWITCHES
- B. CERTIFIED SHOP DRAWINGS AND SUBMITTALS SHALL BEAR STAMP OF APPROVAL OF CONTRACTOR AS EVIDENCE THAT DRAWINGS HAVE BEEN CHECKED. DRAWINGS SUBMITTED WITHOUT THIS STAMP OF APPROVAL WILL NOT BE CONSIDERED AND WILL BE RETURNED FOR PROPER RESUBMISSION.
- C. IF SUBMITTALS SHOW VARIANCES OR SUBSTITUTIONS FROM REQUIREMENTS OF CONTRACT, CONTRACTOR SHALL MAKE SPECIFIC MENTION OF SUCH VARIATION IN HIS LETTER OF TRANSMITTAL IN ORDER THAT, IF ACCEPTABLE, SUITABLE ACTION MAY BE TAKEN FOR PROPER ADJUSTMENT. OTHERWISE CONTRACTOR SHALL NOT BE RELIEVED OF RESPONSIBILITY FOR EXECUTING WORK IN ACCORDANCE WITH CONTRACT EVEN THOUGH SUCH SUBMITTALS HAVE BEEN APPROVED.
- 1.04 SITE VISIT
- A. VISIT JOB SITE PRIOR TO BID DATE TO DETERMINE ACTUAL CONDITIONS UNDER WHICH WORK SHALL BE DONE. TO FAMILIARIZE ONESELF WITH PROJECT AND TO VERIFY TOTAL SCOPE OF WORK REQUIRED. FAILURE TO DO SO SHALL NOT CONSTITUTE A REASON FOR AN EXTRA CHARGE.

SECTION C1502 OUTLET AND JUNCTION BOXES

PART 1 - GENERAL

- 1.01 PROJECT CONDITIONS
- A. VERIFY FIELD MEASUREMENTS ARE AS SHOWN ON DRAWINGS.
- B. VERIFY LOCATIONS OF FLOOR BOXES AND OUTLETS IN WORK AREAS PRIOR TO ROUGH-IN.
- PART 2 - PRODUCTS
- 2.01 OUTLET BOXES
- A. SHEET METAL OUTLET BOXES: GALVANIZED STEEL.
- B. CAST BOXES: TYPE FS, CAST FERROUS. PROVIDE GASKETED COVER BY BOX MANUFACTURER.
- C. MANUFACTURERS: NATIONAL, APPLETON, GENERAL ELECTRIC, RACO, OR STEEL CITY.
- D. PROVIDE BOXES FOR FIXTURES WITH FIXTURE STUDS IN CENTER.
- E. OUTLET BOXES FOR LIGHTING, SWITCHES AND RECEPTACLES IN INTERIOR AREAS WITH EXPOSED CONDUIT SHALL BE PRESSED STEEL AND IN EXTERIOR AREAS WITH EXPOSED CONDUIT SHALL BE CAST METAL WITH THREADED HLBS, 'FS' TYPE. USE GALVANIZED STEEL FOR CONCEALED BOXES. BOXES SHALL BE 1/2" DEEP MINIMUM.
- 2.02 PULL AND JUNCTION BOXES
- A. SHEET METAL BOXES: GALVANIZED STEEL.
- B. SURFACE-MOUNTED CAST METAL BOX: TYPE 4, FLAT-FLANGED, SURFACE-MOUNTED JUNCTION BOX.
- MATERIAL: GALVANIZED CAST IRON.
 - COVER: FURNISH WITH GROUND FLANGE, NEOPRENE GASKET, AND STAINLESS STEEL COVER SCREWS.
- C. IN-GROUND CAST METAL BOX: INSIDE FLANGED, RECESSED COVER BOX FOR FLUSH MOUNTING.
- MATERIAL: GALVANIZED CAST IRON.
 - COVER: NONSKID COVER WITH NEOPRENE GASKET AND STAINLESS STEEL COVER SCREWS.
 - COVER LEGEND: ELECTRIC.
- D. MANUFACTURERS: NATIONAL, APPLETON, GENERAL ELECTRIC, RACO, OZ-GEDEY OR STEEL CITY.

PART 3 - EXECUTION

- 3.01 INSTALLATION
- A. INSTALL ELECTRICAL BOXES AS SHOWN ON DRAWINGS, AND AS REQUIRED FOR SPLICES, TAPS, WIRE PULLING, EQUIPMENT CONNECTIONS AND COMPLIANCE WITH REGULATORY REQUIREMENTS.
- B. INSTALL PULL BOXES AND JUNCTION BOXES ABOVE ACCESSIBLE CEILINGS.
- C. INACCESSIBLE CEILING AREAS: INSTALL OUTLET AND JUNCTION BOXES NO MORE THAN 6 INCHES FROM CEILING ACCESS PANEL OR FROM REMOVABLE RECESSED LIGHT FIXTURE.
- D. USE FLUSH MOUNTING OUTLET BOXES IN FINISHED AREAS.
- E. USE STAMPED STEEL BRIDGES TO FASTEN FLUSH MOUNTING OUTLET BOX BETWEEN STUDS.
- F. INSTALL FLUSH MOUNTED BOX WITHOUT DAMAGING WALL INSULATION OR REDUCING ITS EFFECTIVENESS.
- G. USE ADJUSTABLE STEEL CHANNEL FASTENERS FOR HUNG CEILING OUTLET BOX.

- H. DO NOT FASTEN BOXES TO CEILING SUPPORT WIRES.
- I. SUPPORT BOXES INDEPENDENTLY OF CONDUIT, EXCEPT CAST BOX THAT IS CONNECTED TO TWO RIGID METAL CONDUITS BOTH SUPPORTED WITHIN 12 INCHES OF BOX.
- J. USE GANG BOX WHERE MORE THAN ONE DEVICE IS MOUNTED TOGETHER. DO NOT USE SECTIONAL BOX.
- K. USE GANG BOX WITH PLASTER RING FOR SINGLE DEVICE OUTLETS.
- L. USE CAST OUTLET BOX IN EXTERIOR LOCATIONS AND WET LOCATIONS.
- 3.02 OUTLET BOXES
- A. SELECT BOXES ACCORDING TO INTENDED USE AND TYPE OF OUTLET. CEILING OUTLET BOXES SHALL BE 4" OCTAGON AND 1/2" DEEP. USE 2-1/8" DEEP OCTAGON BOXES OR 4" SQUARE BOXES REQUIRED. ALL CEILING OUTLET BOXES SHALL HAVE A FIXTURE STUD OF NO BOLT SELF-LOCKING TYPE INSTALLED IF REQUIRED TO HANG THE FIXTURE SPECIFIED AT THE OUTLET.
- 3.03 JUNCTION BOXES
- A. JUNCTION BOXES SHALL BE SIZED ACCORDING TO NUMBER OF CONDUCTORS IN BOX OR TYPE OF SERVICE TO BE PROVIDED. MINIMUM JUNCTION BOX SIZE 4-1/16" SQUARE AND 2-1/8" DEEP. PROVIDE SCREW COVERS FOR JUNCTION BOXES.
- B. USE CODE GAUGE STEEL WITH SCREW COVERS FOR PULL BOXES WITH PRIME COAT AND PROVIDE WITH SCREW COVER. SIZE PULL BOXES ACCORDING TO THE NEC.
- C. PROVIDE PULL BOX EVERY 100 FEET OF CONDUIT RUN OR WHERE EXCESSIVE NUMBER OF BENDS NECESSITATES A BOX FOR EASE OF WIRE INSTALLATION.

FIELD VERIFY ALL CONDITIONS

NOTE: AS NOTED IN THE SPECIFICATIONS, ALL WIRING LAYOUTS, LAYOUTS ARE SCHEMATIC. EXACT LOCATIONS SHALL BE DETERMINED BY THE CONSTRUCTION AND STRUCTURE OF THE BUILDING AND SHALL BE VERIFIED AND COORDINATED IN THE FIELD. EACH TRADE CONTRACTOR SHALL VERIFY WITH THE GENERAL CONTRACTOR THAT HE HAS THOROUGHLY REVIEWED AND COORDINATED ALL LOCATIONS AND ROUTINGS WITH ALL OTHER TRADES PRIOR TO FABRICATION OF CONDUITS, DUCTS, OR PIPING, AND START OF INSTALLATION OF SAME (INCLUDING SPRINKLER PIPING WHEN PRESENT ON JOB). ANY INSTALLATION OR CONSTRUCTION CONFLICTS WHICH OCCUR IN THE FIELD SHALL BE RESOLVED BY THE TRADE CONTRACTOR TO THE SATISFACTION OF THE OWNER AND ARCHITECT AND AT NO EXPENSE TO THE OWNER, ARCHITECT AND/OR GENERAL CONTRACTOR.

THE CONTRACTOR SHALL CONTACT THE ARCHITECT, ENGINEER OR OWNER PRIOR TO BIDDING FOR INTERPRETATIONS AND CLARIFICATIONS OF THE DESIGN AND INCLUDE IN HIS BID ALL COSTS TO MEET THE DESIGN INTENT. CLARIFICATIONS MADE BY THE ARCHITECT, ENGINEER OR OWNER AFTER BIDDING WILL BE FINAL AND SHALL BE IMPLEMENTED AT CONTRACTORS COST.

BIDDING CONTRACTORS SHALL HAVE A WORKING KNOWLEDGE OF LOCAL CODES AND ORDINANCES AND SHALL INCLUDE IN THEIR BIDS THE COSTS FOR ALL WORK INSTALLED IN STRICT ACCORDANCE WITH GOVERNING CODES, THE PLANS AND SPECIFICATIONS NOT WITHSTANDING, THE CONTRACTOR SHALL ALERT ARCHITECT, ENGINEER OR OWNER OF ANY APPARENT DISCREPANCIES BETWEEN GOVERNING CODES AND DESIGN INTENT.

NATIONAL ACCOUNTS

1.	PRICE AIR DEVICES - THE MECHANICAL CONTRACTOR IS REQUIRED TO PURCHASE THE AIR DEVICES DIRECTLY FROM TOM BARRROW COMPANY. CONTACT MR. SCOTT GEORGE AT 404-351-0101 FOR PRICING AND AVAILABILITY. AIR DEVICES NOT PURCHASED THRU TOM BARRROW COMPANY WILL NOT BE ACCEPTED.
2.	AIR DOORS - THE MECHANICAL CONTRACTOR IS REQUIRED TO PURCHASE THE AIR DOORS DIRECTLY FROM TOM BARRROW COMPANY. CONTACT MR. SCOTT GEORGE AT 404-351-0101 FOR PRICING AND AVAILABILITY. AIR DOORS NOT PURCHASED THRU TOM BARRROW COMPANY WILL NOT BE ACCEPTED.



Chick-fil-A
Chick-fil-A
5200 Buffington Road
Atlanta, Georgia
30349-2998

TAN VU
ARCHITECT

220 E. CENTRAL PKWY, STE 4000
ALBANY, MISSISSIPPI 38001
407.645.5008

SEAL:



CHICK-FIL-A
HATTIESBURG
6099 US HIGHWAY 98
HATTIESBURG, MS 39402

FSU#01613

BUILDING TYPE / SIZE: S04-152

RELEASE:

PRINTED FOR:

CONSTRUCTION

REVISION SCHEDULE

NO.	DATE	DESCRIPTION

CONSULTANT PROJECT # 2022.1062

DATE MAY 2023

DRAWN BY AE

CHECKED BY DAK

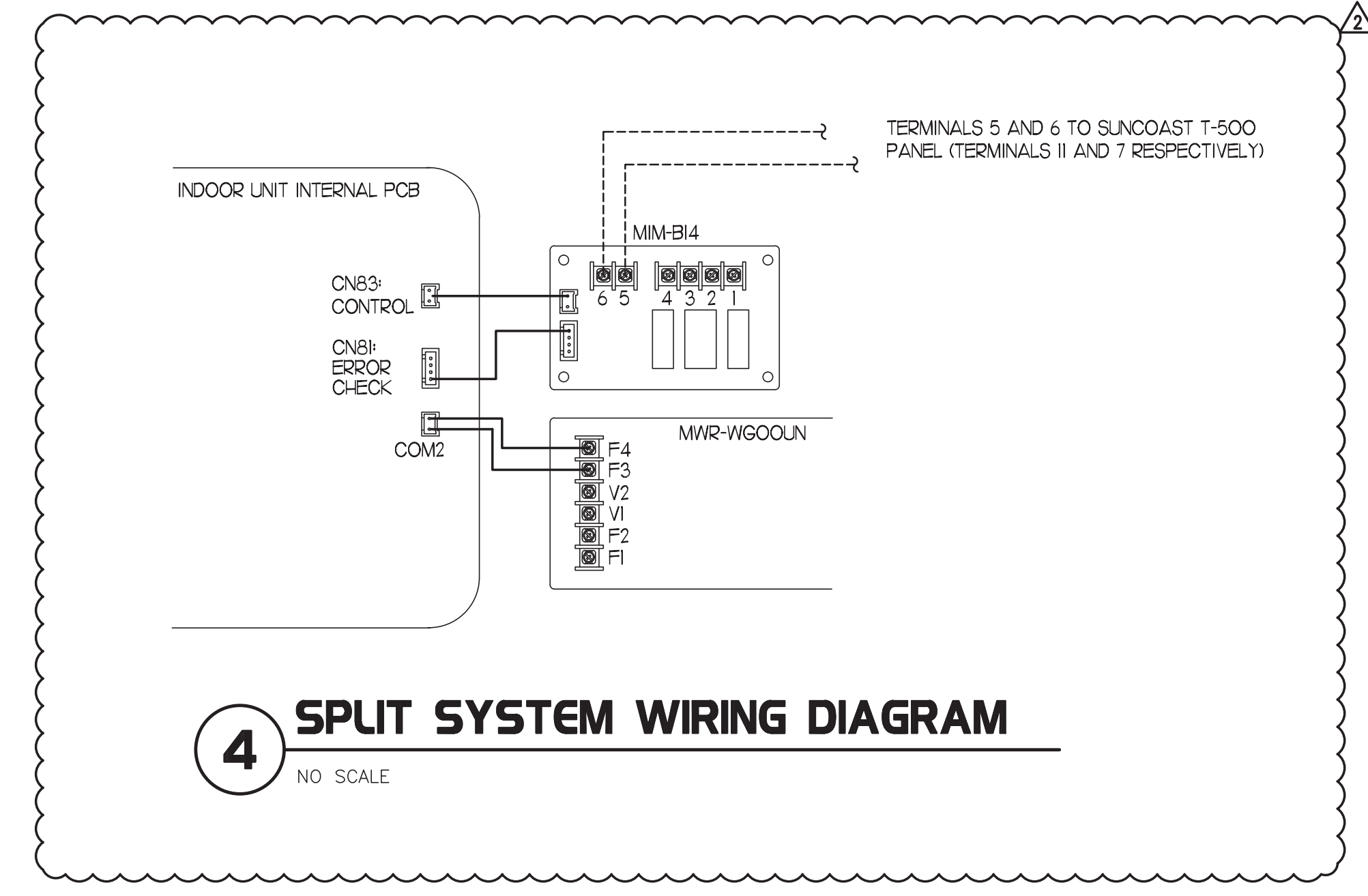
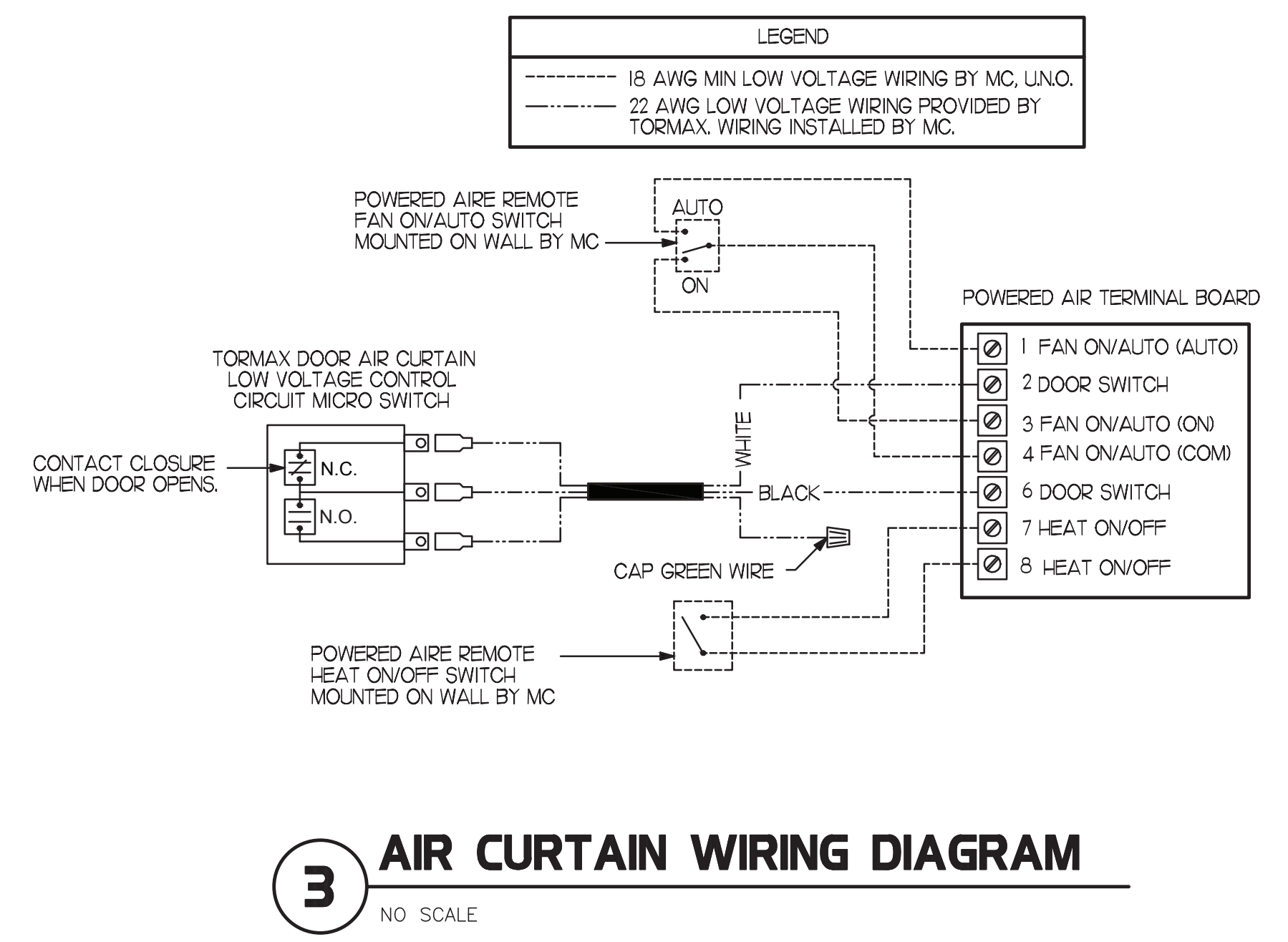
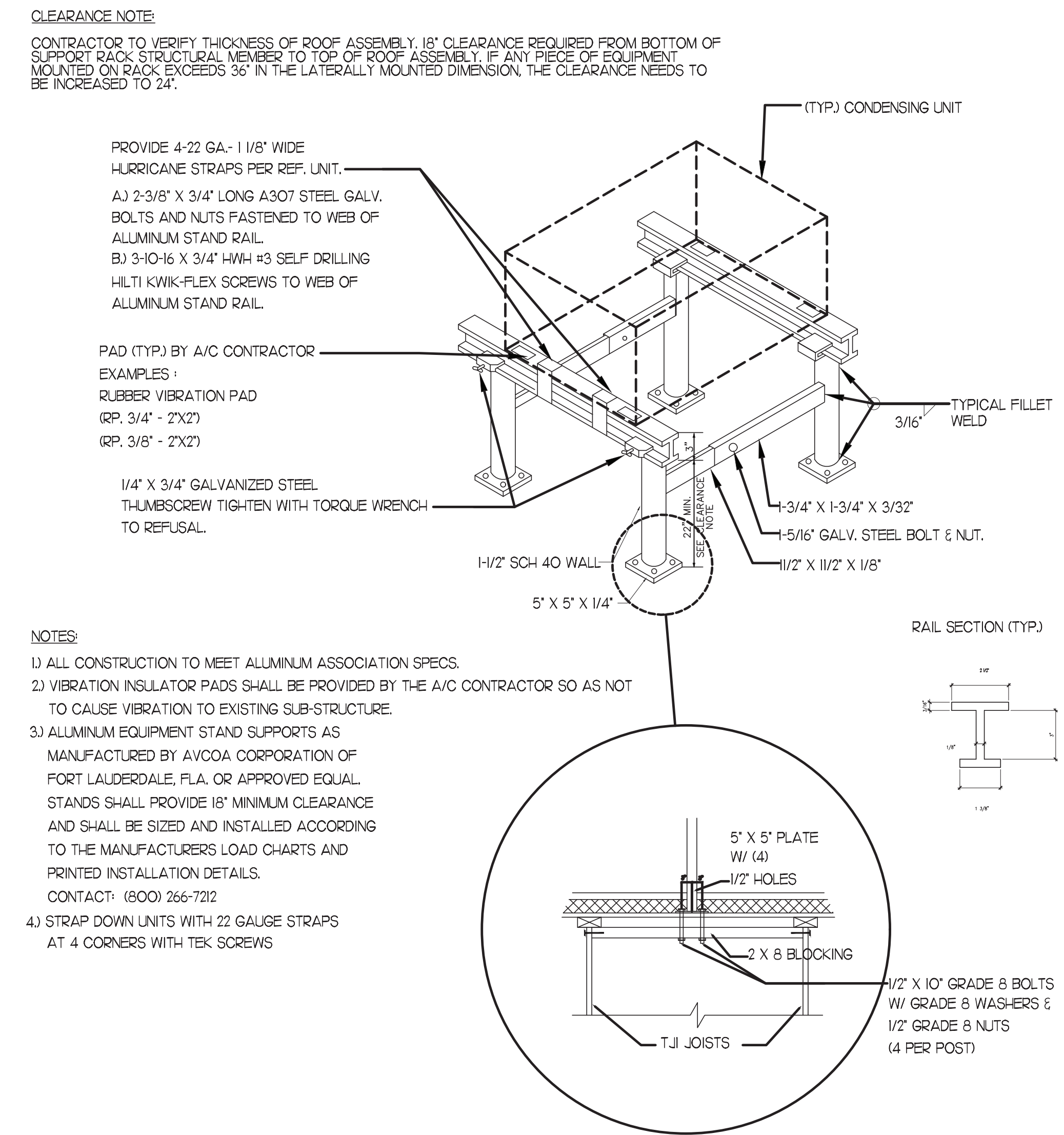
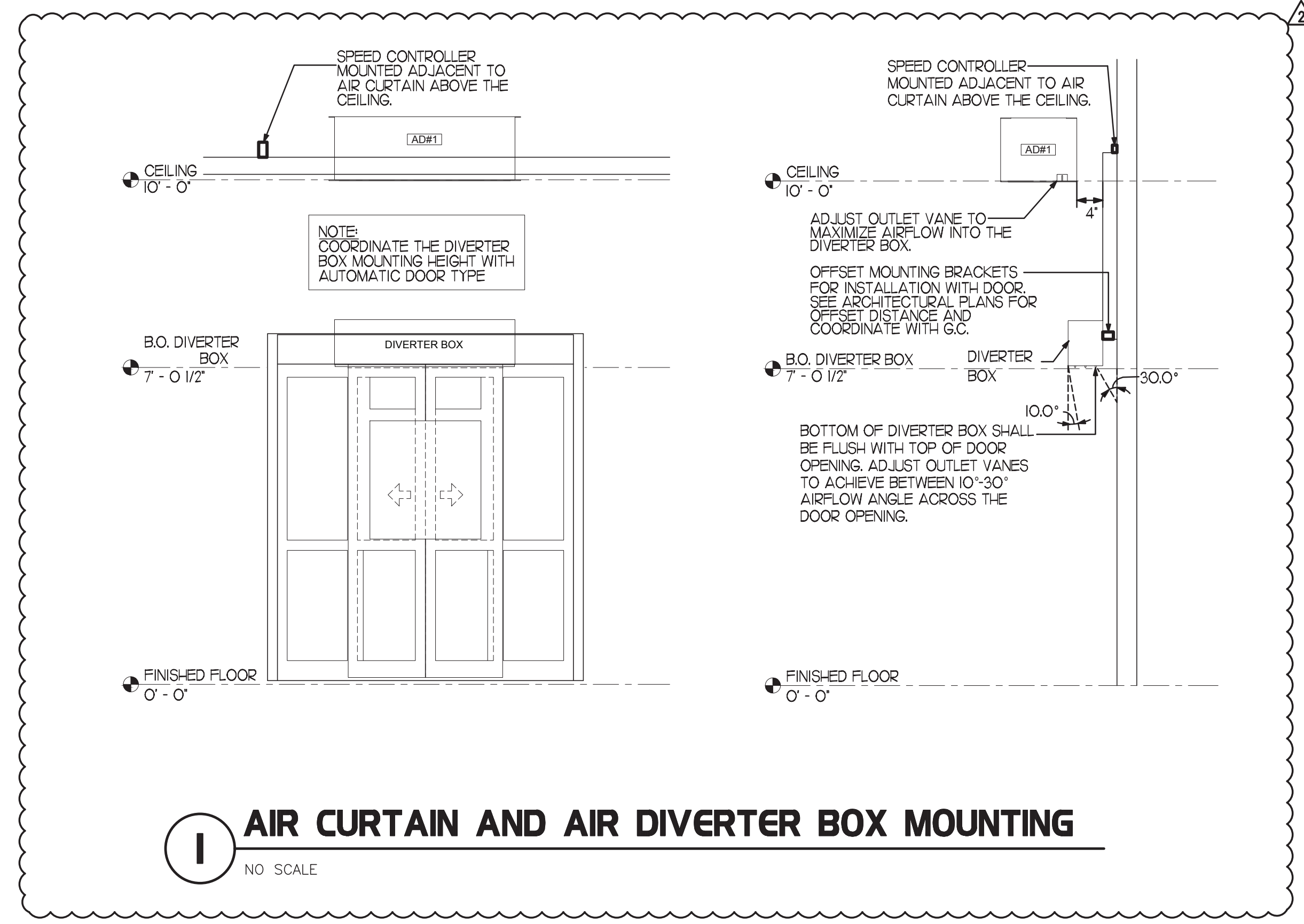
Information contained on this drawing and in all digital files provided for above named project may not be reproduced in any manner without express written or verbal consent from the project representative.

SHEET

MECH. SPECIFICATIONS & SCHEDULES

SHEET NUMBER

M2.1



Chick-fil-A
Chick-fil-A
5200 Buffington Road
Atlanta, Georgia
30349-2998

TAN VU
ARCHITECT

220 E. CENTRAL PKWY, STE 4000
ALTIMONTE SPRINGS, FL 32701
407.645.5008

SEAL:
STACY TREVOR HENNINGSON
LICENSED PROFESSIONAL ENGINEER
STATE OF MISSISSIPPI
27651

CHICK-FIL-A
HATTIESBURG

6099 US HIGHWAY 98
HATTIESBURG, MS 39402

FSU#01613
BUILDING TYPE / SIZE: S04-152
RELEASE:
PRINTED FOR
CONSTRUCTION

REVISION SCHEDULE

NO.	DATE	DESCRIPTION
2	08/02/23	COORDINATION REVISIONS

CONSULTANT PROJECT # 2022.1062
DATE MAY 2023
DRAWN BY AE
CHECKED BY DAK

Information contained on this drawing and in all digital files produced for above named project may not be reproduced in any manner without express written or verbal consent from the original project representatives.

SHEET
MECHANICAL DETAILS

SHEET NUMBER