

Report By:

National TAB
1329 E. KEMPER ROAD
SUITE 4210
CINCINNATI, OH 45246



Report: TAB Report
Function: Test, Adjust, & Balance
Date: 10/16/2025
Completed By: National TAB

PROJECT
11-17-25 WAWA #6104 GREENVILLE, NC

2101 STANTONSBURG RD

GREENVILLE, NC

Client

Wawa
260 West Baltimore Pike

Wawa, PA 19063

National TAB

Project: 11-17-25 WAWA #6104 GREENVILLE, NC

Table Of Contents

Section	Page #
Summary	3
Remarks	4
Balance Schedule	6
Checklist	7
AHU/RTU	17
FAN - Exhaust	23
GRD	28

Project Summary

The summary below provides a quick understanding of our scope of work and general testing procedures. Enclosed in the report is further detail about your building performance including recommendations, asset data, and pictures. Our focus is to work with the trades to remedy any issues or deficiencies during the actual field balancing and not after the balancing has occurred to achieve a positive environment and outcome. The level of success is determined by the availability of the trades, possible parts needed, or time constraints.

RTU's (Roof Top Units) w/ Diffusers

Each of the RTU's were measured at their terminal devices or via traverse to establish a total flow for that unit. Each RTU was adjusted to within tolerance of the engineer's design flow. Each outlet was then adjusted to within tolerance of the design flow. Outside air was measured by reading the intake air opening with a velocity grid and multiplying by the free area. The outside air damper was adjusted until the airflow was within the design requirements. Any equipment that fell outside of that tolerance is noted throughout the report.

General Exhaust Fans w/ Grilles

The general exhaust fans were measured by reading each air device with a flow hood. The total airflow for each fan is equivalent to the sum of these readings. Fan speed was then adjusted so that the airflow was within tolerance of design. Each terminal device was balanced to within tolerance of the design volume using the installed volume dampers. Any equipment that fell outside of this tolerance is noted throughout the report.

Ceiling Exhaust Fans

The ceiling exhaust fans were measured using a flow hood. If speed adjustment was provided, the fan speed was adjusted to within design tolerance. Any equipment that fell outside of this tolerance is noted throughout the report.

Final Building Tests

After completing the test and balance the final building pressure was measured. It was confirmed that the building pressure fell within acceptable tolerances and that the pressure measurement coincides with the actual and design net airflow. Any deviations from these standards are noted throughout the report.

Issue List

- R3-1 & R3-2



11-17-25 WAWA #6104 GREENVILLE, NC

Project Issue Information

Issue Name : R3-1 & R3-2
Description : Diffusers are inaccessible
Created By : National TAB **Assigned To :** National TAB - Cody Mauro
Status : Open
Priority : High **Asset Tag :**
Originated Date : 10/14/2025 - Cody Mauro - National TAB

Project Issue File Details



10/14/2025

AIR BALANCE SCHEDULE

UNIT	AREA SERVED	HVAC SUPPLY		HVAC RETURN		HVAC OUTDOOR		OA %		HOOD MAKE-UP		HOOD EXHAUST		GENERAL EXH.	
		DESIGN	ACTUAL	DESIGN	ACTUAL	DESIGN	ACTUAL	DESIGN	ACTUAL	DESIGN	ACTUAL	DESIGN	ACTUAL	DESIGN	ACTUAL
RTU-1	FOOD SERVICE	3600	3570	2900	2755	700	815	19.4%	22.8%						
RTU-2	RETAIL	3250	3279	2870	2779	380	500	11.7%	15.2%						
RTU-3	RETAIL /OFFICE	2000	1955	1800	1730	200	225	10.0%	11.5%						
EF-1	RESTROOMS													375	302
EF-2	BOH EXHAUST													400	323
EF-3	TRASH ROOM													200	174
TOTALS		8850	8804	7570	7264	1280	1540			0	0	0	0	975	799

NET BUILDING AIRFLOW CALCULATION

TOTALS	DESIGN	ACTUAL
TOTAL OA	1280	1540
TOTAL EXHAUST	975	799
NET AIRFLOW	305	741

DOOR TESTED	BUILDING PRESSURE MEASUREMENTS (IN. H2O)
FRONT	0.0067
SIDE	0.0065
REAR	0.013
AVERAGE	0.0087

FINAL CHECKS

ACTUAL NET AIRFLOW COINCIDES WITH DESIGN: ✓

MEASURED PRESSURES COINCIDES WITH ACTUAL NET AIRFLOW: ✓

PRESSURE FALLS WITHIN IMC TOLERANCE OF +/-0.02" W.C. ✓

NOTES:

Diffuser for EF1 in Womens' RR not installed.

CheckList List

- 01: RTU's/AHU's
- 02: LENNOX SETUP PARAMETERS
- 03: SENSOR WIRING (LENNOX)
- 04: EF'S
- 05: CLOSEOUT CHECKS



11-17-25 WAWA #6104 GREENVILLE, NC

CheckList Information

Name : 01: RTU's/AHU's **Status :** Completed

Assigned Organization : National TAB **Asset :**

Requesting Organization : National TAB

Created Date : 09/08/2025 - Trinity Dodds - National TAB

Completed Date : 10/16/2025 - Cody Mauro - National TAB

CheckList Item Details

RTU's/AHU's

All diffusers and grilles are installed and match design?	Pass
---	------

Comment:

Clean filters installed?	Pass
--------------------------	------

Comment:

Economizers are assembled and functional?	Pass
---	------

Comment:

Motors are all operating below the FLA rating?	Pass
--	------

Comment:

Are belts tight?	N/A
------------------	-----

Comment:

If direct drive unit is the speed controller working?	Pass
---	------

Comment:

Is gas piping installed and valves turned on?	Pass
---	------

Comment:

Condensate drains are installed?

Pass

Comment:

Unit free of noticeable noise and vibration

Pass

Comment:

Final outside air damper position is marked with permanent marker?

N/A

Comment:

No alarms present?

Pass

Comment:

Any noticeable duct leakage?

Pass

Comment:

Total supply and OA flows are balanced within +/-5% and supply & return diffusers within +/-10%?

Pass

Comment:

IN TEST MODE, TEST THE FOLLOWING:

Cooling mode is operational? Record EAT/LAT for each unit:

Pass

Comment:

RTU1: 54/66 RTU2: 52/66 RTU3: 53/66

Heating mode is operational? Record EAT/LAT for each unit:

Pass

Comment:

RTU1: NA (Kitchen) RTU2: 78/66 RTU3: 78/66

Dehumidification mode is operational? (Feel dehumidification coil with your hand. Is it hot?) Record EAT/LAT for each unit:

Pass

Comment:

RTU1: 64/67 RTU2: 64/66 RTU3: 63/66



11-17-25 WAWA #6104 GREENVILLE, NC

CheckList Information

Name : 02: LENNOX SETUP PARAMETERS **Status :** Completed

Assigned Organization : National TAB **Asset :**

Requesting Organization : National TAB

Created Date : 09/08/2025 - Trinity Dodds - National TAB

Completed Date : 10/16/2025 - Cody Mauro - National TAB

CheckList Item Details

UNIT ID CONFIGURATIONS

BACNET CONFIGURATION: GO TO SETTINGS>GENERAL>CONFIGURATION ID1 POSITION 5 SET TO "N". Pass

Comment:

NETWORK CONFIGURATION: GO TO SETUP>NETWORK INTEGRATION, SET TO BACNET IP Pass

Comment:

CONTROL MODE: SET CONTROL MODE TO ROOM SENSOR: CO2, TEMP & HUMIDITY (PER UNIT, AS NEEDED). Pass

Comment:

INDIVIDUAL PARAMETER CONFIGURATIONS (MECHANICAL CONTRACTOR TO DEFINE / AS APPLICABLE):

PARAMETER 105 DEHUMID MODE: 7 NO CONDITIONS Pass

Comment:

PARAMETER 106 DEHUMID SETPOINT: 50, THIS IS A CENTERED SET POINT (+/-) Yes

Comment:

PARAMETER 107 DEHUMID DEADBAND: 3 (DEFAULT) THIS IS THE ACTUAL +/- VALUE Pass

Comment:

PARAMETER 117 CO2 DAMPER MAX OPEN: 50%

Pass

Comment:

PARAMETER 118 CO2 START OPEN PPM: 1500

Pass

Comment:

PARAMETER 119 CO2 MAX OPEN PPM: 1500

Pass

Comment:

PARAMETER 137 OCCHET SET POINT: 68 (BACK UP)

Pass

Comment:

PARAMETER 131 SET TO THE SAME % AS THE MINMIUM OA DAMPER SETPOINT

Pass

Comment:

PARAMETER 139 OCC COOLING SET POINT: 72 (BACK UP)

Pass

Comment:

PARAMETER 154 OCC BLOWER MODE: ON-CONTINUOUS 1

Pass

Comment:

CFM VALUES / MSAV FAN SPEEDS (AIR BALANCER TO DEFINE / IF APPLICABLE):

OA DAMPER SET TO SAME POSITION IN ALL FAN SPEEDS?

Pass

Comment:

RTU1: 30% RTU2: 29% RTU3: 27%

ALL FAN SPEEDS SET TO THE SAME CFM VALUE (ENTER SETPOINTS BELOW)

N/A

Comment:

RTU1: 81% RTU2: 65% RTU3: 50%

HEAT CFM VALUE: PER THE HVAC SCHEDULE

Pass

Comment:

HIGH COOL CFM VALUE: THE HIGH COOL CFM VALUE

Pass

Comment:

LOW COOL CFM VALUE: MATCH THE HIGH COOL CFM VALUE

Pass

Comment:

VENTILATION CFM VALUE: MATCH THE HIGH COOL CFM VALUE

Pass

Comment:



11-17-25 WAWA #6104 GREENVILLE, NC

CheckList Information

Name : 03: SENSOR WIRING (LENNOX) **Status :** Completed

Assigned Organization : National TAB **Asset :**

Requesting Organization : National TAB

Created Date : 09/08/2025 - Trinity Dodds - National TAB

Completed Date : 10/16/2025 - Cody Mauro - National TAB

CheckList Item Details

COMBINATION TEMPERATURE/HUMIDITY SENSOR

Sensors are installed where shown on the drawing? Pass

Comment:

2 conductor shielded cable has one wire landed to Vin, one to GND, and the shield wire is not connected. Pass

Comment:

For second shielded cable, one wire is landed to Vout and the shield wire is not connected. Pass

Comment:

Verify that the CORE or Prodigy controller is sensing a relative humidity (record the reading) Pass

Comment:

RTU1: 56% RTU2: 56% RTU3: 53%



11-17-25 WAWA #6104 GREENVILLE, NC

CheckList Information

Name : 04: EF'S **Status :** Completed

Assigned Organization : National TAB **Asset :**

Requesting Organization : National TAB

Created Date : 09/08/2025 - Trinity Dodds - National TAB

Completed Date : 10/15/2025 - Cody Mauro - National TAB

CheckList Item Details

EF's

Rotation is correct?	Pass
----------------------	------

Comment:

Belts are tight (if applicable)?	Pass
----------------------------------	------

Comment:

Speed controller installed and functional (if applicable)?	N/A
--	-----

Comment:

There is no major leakage around base of fan?	Pass
---	------

Comment:

Is the motor operating below the motor FLA rating?	Pass
--	------

Comment:

Back draft damper installed and can it fully open?	Pass
--	------

Comment:

Unit free of noticeable noise and vibration?	Fail
--	------

Comment:

Both units vibrate and make noise. EF1 has something lodged under base of motor. Occasionally turns off, sounds like a screw that fell. EF2 motor missing mounting screw, causes motor to vibrate and make noise.

Total exhaust flow balanced within +/-5% and grilles are within +/-10%?

Fail

Comment:

No leakage around base of fans, motor sheaves turned in when applicable to speed up fans. EF1 very low total EF1-1 diffuser missing EF2 slightly low total, motor sheave turned in all the way

Notes/Comments :

Check EF1 and EF2 for any duct leakage, seal problems Dismantle fans to see what's causing noise inside of units

Date :10/15/2025



11-17-25 WAWA #6104 GREENVILLE, NC

CheckList Information

Name : 05: CLOSEOUT CHECKS **Status :** Completed

Assigned Organization : National TAB **Asset :**

Requesting Organization : National TAB

Created Date : 09/08/2025 - Trinity Dodds - National TAB

Completed Date : 10/16/2025 - Cody Mauro - National TAB

CheckList Item Details

SPACE COMFORT

Is space free of drafting? Pass

Comment:

Is space comfortable in all areas? Pass

Comment:

Is the space free of ventilation noise? Pass

Comment:

BUILDING PRESSURE

Do actual net building airflow, design net building airflow, and pressure coincide? If not why? (All three should either be positive or negative) Pass

Comment:

National TAB

Project: 11-17-25 WAWA #6104 GREENVILLE, NC

System/Unit: AHU/RTU



Asset: RTU1

AREA:FOOD SERVICE/BOH

Unit Data		
	Design	Actual
MFG	LENNOX	LENNOX
Serial Num	-	5624K00742
Model Num	LGT120H4E	LGT120H4ES2Y
Type	RTU	RTU
Configuration	VERTICAL	VERTICAL
Num OA Filters 1	-	4
OA Filter Size 1	-	20x25x2
Num Final Filter 1	-	2
Final Filter Size 1	-	25x16

Motor Data		
	Design	Actual
Motor MFG	-	EBMPAPST
Motor Rpm	-	2200
Phase	3	3
Rated Voltage	208	200
Rated Amperage	-	8.7

Drive Data	
	Actual
Motor Sheave SetPt	60Hz

Test Data		
	Design	Actual
SF CFM	3600	3570
RA CFM	2900	2755
OA CFM	700	815
RL Voltage	-	210
RL Amperage	-	5.4
SF System SetPt	-	81%
RA Damper Position	-	70%
RA Damper Type	-	ECON
OA Damper Position	-	30%
OA Damper Type	-	ECON

Performance Data		
	Design	Actual
MA Plenum SP	-	0.47"
Fan Suction SP	-	0.83"
Fan Discharge SP	-	0.95"
Total ESP	1.00"	1.42"
Fan Total SP	-	1.78"

Completed By: Cody Mauro on 10/15/2025

National TAB

Project:11-17-25 WAWA #6104 GREENVILLE, NC

AHU/RTU



Diffuser Supply (GRD)

RTU1/FOOD SERVICE/BOH

Asset									
Asset Name	Location	Type	Size	DESIGN CFM	AK	CFM(1)	CFM(2)	FINAL CFM	% to design
SGRD1	COFFEE	SD-4	10"	300		504	309	309	103.0
SGRD2	SPECIALTY BEVERAGE	SD-4	10"	300		273	303	303	101.0
SGRD3	SPECIALTY BEVERAGE	SD-4	10"	300		376	285	285	95.0
SGRD4	FOOD SERVICE	SD-4	10"	300		357	290	290	96.7
SGRD5	FOOD SERVICE	SD-4	10"	300		423	310	310	103.3
SGRD6	FOOD SERVICE	SD-4	10"	300		282	284	284	94.7
SGRD7	FOOD SERVICE	SD-4	10"	300		348	324	324	108.0
SGRD8	BOH	SD-4	10"	325		389	341	341	104.9
SGRD9	BOH	SD-4	10"	325		310	303	303	93.2
SGRD10	BOH	SD-4	10"	325		259	308	308	94.8
SGRD11	TRASH	SD-1	8"	200		136	183	183	91.5
SGRD12	ELECTRICAL ROOM	SD-1	10"	325		340	330	330	101.5
Total				3600		3997	3570	3570	99.17%

Diffuser Ret/Exh (GRD)

RTU1/FOOD SERVICE/BOH

Asset									
Asset Name	Location	Type	Size	DESIGN CFM	AK	CFM(1)	CFM(2)	FINAL CFM	% to design
EGRD1	SPECIALTY BEVERAGE	RG-1	14X14	900		498			-
EGRD2	SPECIALTY BEVERAGE	RG-1	14X14	900		581			-
EGRD3	WASHROOM	RG-1	14X14	1100		635			-
Total				2900		1714	0	0	0%

National TAB

Project: 11-17-25 WAWA #6104 GREENVILLE, NC

System/Unit: AHU/RTU



Asset: RTU2

AREA:RETAIL

Unit Data		
	Design	Actual
MFG	LENNOX	LENNOX
Serial Num	-	5624K00736
Model Num	LGT120H4E	LGT120H4ES1Y
Type	RTU	RTU
Configuration	VERTICAL	VERTICAL
Num OA Filters 1	-	4
OA Filter Size 1	-	20x25x2
Num Final Filter 1	-	2
Final Filter Size 1	-	25x16

Motor Data		
	Design	Actual
Motor MFG	-	EBMPAPST
Motor Rpm	-	2200
Phase	3	3
Rated Voltage	208	200
Rated Amperage	-	8.7

Drive Data	
	Actual
Motor Sheave SetPt	60Hz

Test Data		
	Design	Actual
SF CFM	3250	3279
RA CFM	2870	2779
OA CFM	380	500
RL Voltage	-	210
RL Amperage	-	4.4
SF System SetPt	-	67%
RA Damper Position	-	71%
RA Damper Type	-	ECON
OA Damper Position	-	29%
OA Damper Type	-	ECON

Performance Data		
	Design	Actual
MA Plenum SP	-	0.37"
Fan Suction SP	-	0.59"
Fan Discharge SP	-	0.61"
Total ESP	1.00"	0.98"
Fan Total SP	-	1.20"

Completed By: Cody Mauro on 10/15/2025

National TAB

Project:11-17-25 WAWA #6104 GREENVILLE, NC

AHU/RTU



Diffuser Supply (GRD)

RTU2/RETAIL

Asset									
Asset Name	Location	Type	Size	DESIGN CFM	AK	CFM(1)	CFM(2)	FINAL CFM	% to design
SGRD1	RETAIL	SD-2	12"	275	0.89	500	298	298	108.4
SGRD2	RETAIL	SD-2	12"	275	0.89	547	296	296	107.6
SGRD3	RETAIL	SD-2	16"	275	0.89	367	294	294	106.9
SGRD4	RETAIL	SD-2	16"	300	0.89	352	302	302	100.7
SGRD5	RETAIL	SD-2	18"	300	0.89	715	313	313	104.3
SGRD6	RETAIL	SD-2	18"	275	0.89	379	297	297	108.0
SGRD7	RETAIL	SD-2	18"	300	0.89	278	293	293	97.7
SGRD8	RETAIL	SD-2	18"	275	0.89	563	268	268	97.5
SGRD9	RETAIL	SD-2	14"	275	0.89	385	277	277	100.7
SGRD10	HALLWAY	SD-1	8"	125		161	126	126	100.8
SGRD11	WOMEN'S RR	SD-5	8"	75		141	80	80	106.7
SGRD12	REAR VEST	SD-5	8"	150		131	118	118	78.7
SGRD13	MEN'S RR	SD-5	8"	150		164	162	162	108.0
SGRD14	DELIVERY ROOM	SD-1	8"	200		153	155	155	77.5
Total				3250		4836	3279	3279	100.89%

Diffuser Ret/Exh (GRD)

RTU2/RETAIL

Asset									
Asset Name	Location	Type	Size	DESIGN CFM	AK	CFM(1)	CFM(2)	FINAL CFM	% to design
EGRD1	RETAIL	RG-4		2870					-
Total				2870		0	0	0	0%

National TAB

Project: 11-17-25 WAWA #6104 GREENVILLE, NC

System/Unit: AHU/RTU



Asset: RTU3

AREA:RETAIL/OFFICE

Unit Data		
	Design	Actual
MFG	LENNOX	LENNOX
Serial Num	-	5624H05201
Model Num	GLT060H4E	LGT060H4EB1Y
Type	RTU	RTU
Configuration	VERTICAL	VERTICAL
Num OA Filters 1	-	4
OA Filter Size 1	-	20x20x2
Num Final Filter 1	-	2
Final Filter Size 1	-	15x15

Motor Data		
	Design	Actual
Motor MFG	-	EBMPAPST
Phase	3	3
Rated Voltage	208	208
Rated Amperage	-	4.4

Drive Data	
	Actual
Motor Sheave SetPt	60Hz

Test Data		
	Design	Actual
SF CFM	2000	1955
RA CFM	1800	1730
OA CFM	200	225
RL Voltage	-	210
RL Amperage	-	2.9
SF System SetPt	-	50%
RA Damper Position	-	73%
RA Damper Type	-	ECON
OA Damper Position	-	27%
OA Damper Type	-	ECON

Performance Data		
	Design	Actual
MA Plenum SP	-	0.17"
Fan Suction SP	-	0.26"
Fan Discharge SP	-	0.30"
Total ESP	0.50"	0.47"
Fan Total SP	-	0.56"

Completed By: Cody Mauro on 10/15/2025

National TAB

Project:11-17-25 WAWA #6104 GREENVILLE, NC

AHU/RTU



Diffuser Supply (GRD)

RTU3/RETAIL/OFFICE

Asset									
Asset Name	Location	Type	Size	DESIGN CFM	AK	CFM(1)	CFM(2)	FINAL CFM	% to design
SGRD1	VESTIBULE	SD-5	8"	200	0.89	204		204	102.0
SGRD2	RETAIL	SD-2	16"	375	0.89	805	376	376	100.3
SGRD3	RETAIL	SD-2	16"	375	0.89	708	380	380	101.3
SGRD4	RETAIL	SD-2	14"	375	0.89	977	366	366	97.6
SGRD5	RETAIL	SD-2	12"	375	0.89	810	377	377	100.5
SGRD6	ASSOCIATE AREA	SD-1	8"	150		230	130	130	86.7
SGRD7	OFFICE	SD-1	8"	150		149	122	122	81.3
Total				2000		3883	1751	1955	97.75%

Diffuser Ret/Exh (GRD)

RTU3/RETAIL/OFFICE

Asset									
Asset Name	Location	Type	Size	DESIGN CFM	AK	CFM(1)	CFM(2)	FINAL CFM	% to design
EGRD1	COFFEE	RG-1	12X12	750		NA			-
EGRD2	COFFEE	RG-1	12X12	750		NA			-
EGRD3	ASSOCIATE AREA	RG-3	8X8	150		53			-
EGRD4	OFFICE	RG-3	8X8	150		34			-
Total				1800		87	0	0	0%

National TAB

Project: 11-17-25 WAWA #6104 GREENVILLE, NC

System/Unit: FAN - Exhaust



Asset: EF1

AREA:RESTROOMS

Unit Data		
	Design	Actual
MFG	GREENHECK	COOK
Model Num	GB-098-6	80C4B 80 ACE
Serial Num	-	203SL77876-00/000070
Type	DOWNBLAST	DOWNBLAST
Configuration	VERTICAL	VERTICAL

Test Data		
	Design	Actual
CFM	375	302
Fan Rotation	-	CCW
Suction ESP	-	-0.23"
Discharge ESP	-	ATM
Total ESP	0.375"	0.23"

Motor Data		
	Design	Actual
Motor MFG	-	VSMOTORS
Horsepower	1/6	1/3
Motor Rpm	-	1725
Phase	1	1
Voltage (rated)	120	115
Amperage (rated)	-	6.0
Service Factor	-	1.35

Drive Data	
	Actual
Motor Sheave Size	3 1/2"
Motor Bore Size	1"
Motor Sheave SetPt	60Hz
Fan Sheave Size	4"
Fan Sheave Bore	3/4"
Belt CL Distance	5"
Num of Belts	1
Belt Size	4L200

Completed By: Cody Mauro on 10/15/2025

Notes:

Something rattling under motor compartment, occasionally turns fan off.

Written By: Cody Mauro on 10/15/2025

National TAB

Project:11-17-25 WAWA #6104 GREENVILLE, NC

FAN - Exhaust



Diffuser Ret/Exh (GRD)

EF1/RESTROOMS

Asset									
Asset Name	Location	Type	Size	DESIGN CFM	AK	CFM(1)	CFM(2)	FINAL CFM	% to design
EGRD1	WOMEN'S RR	EG-1	8X8	150		0	30	153	102.0
EGRD2	MEN'S RR	EG-1	8X	225		32	87	149	66.2
Total				375		32	117	302	80.53%

National TAB

Project: 11-17-25 WAWA #6104 GREENVILLE, NC

System/Unit: FAN - Exhaust



Asset: EF2

AREA:BOH EXHAUST

Unit Data		
	Design	Actual
MFG	GREENHECK	COOK
Model Num	GB-098-6	80C4B 80 ACE
Serial Num	-	203SL77876-00/0002 01
Type	DOWNBLAST	DOWNBLAST
Configuration	VERTICAL	VERTICAL

Test Data		
	Design	Actual
CFM	400	323
Fan Rotation	-	CCW
Suction ESP	-	-0.36"
Discharge ESP	-	ATM
Total ESP	0.375"	0.36"

Motor Data		
	Design	Actual
Motor MFG	-	VSMOTORS
Horsepower	1/6	1/3
Motor Rpm	-	1725
Phase	1	1
Voltage (rated)	120	115
Amperage (rated)	-	6.0
Service Factor	-	1.35

Drive Data	
	Actual
Motor Sheave Size	3 1/2"
Motor Bore Size	1"
Motor Sheave SetPt	60Hz
Fan Sheave Size	4"
Fan Sheave Bore	3/4"
Belt CL Distance	5"
Num of Belts	1
Belt Size	4L200

Completed By: Cody Mauro on 10/15/2025

Notes:
Motor rattling, screw missing causing noise

Written By: Cody Mauro on 10/15/2025

National TAB

Project:11-17-25 WAWA #6104 GREENVILLE, NC

FAN - Exhaust



Diffuser Ret/Exh (GRD)

EF2/BOH EXHAUST

Asset									
Asset Name	Location	Type	Size	DESIGN CFM	AK	CFM(1)	CFM(2)	FINAL CFM	% to design
EGRD1	FOOD SERVICE	RG-2	8X8	200		127	162	169	84.5
EGRD2	BOH	RG-2	8X8	200		124	150	154	77.0
Total				400		251	312	323	80.75%

National TAB

Project: 11-17-25 WAWA #6104 GREENVILLE, NC

System/Unit: FAN - Exhaust



Asset: EF3

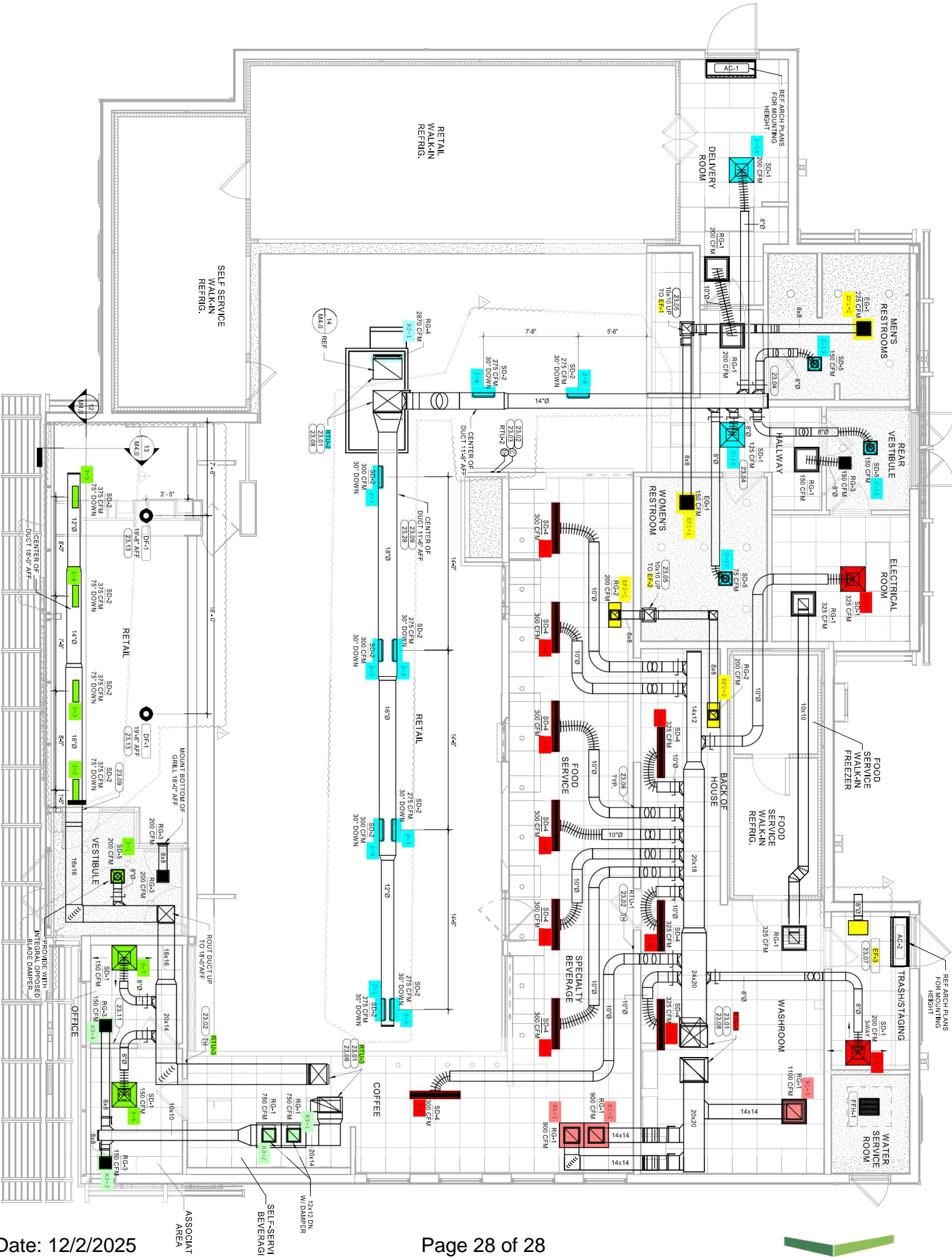
AREA:TRASH ROOM

Unit Data		
	Design	Actual
MFG	GREENHECK	COOK
Model Num	SP-B200	FAC12A4689
Serial Num	-	615271
Type	CEILING	CEILING
Configuration	VERTICAL	VERTICAL

Test Data		
	Design	Actual
CFM	200	174
Fan Rotation	-	CCW
System SetPt	-	60Hz
Fan Discharge SP	-	ATM

Motor Data		
	Design	Actual
Motor MFG	-	COOK
Horsepower	-	1/6
Motor Rpm	-	1725
Phase	1	1
Voltage (rated)	120	120
Amperage (rated)	-	2.45

Completed By: Cody Mauro on 10/15/2025



Date: 12/2/2025

