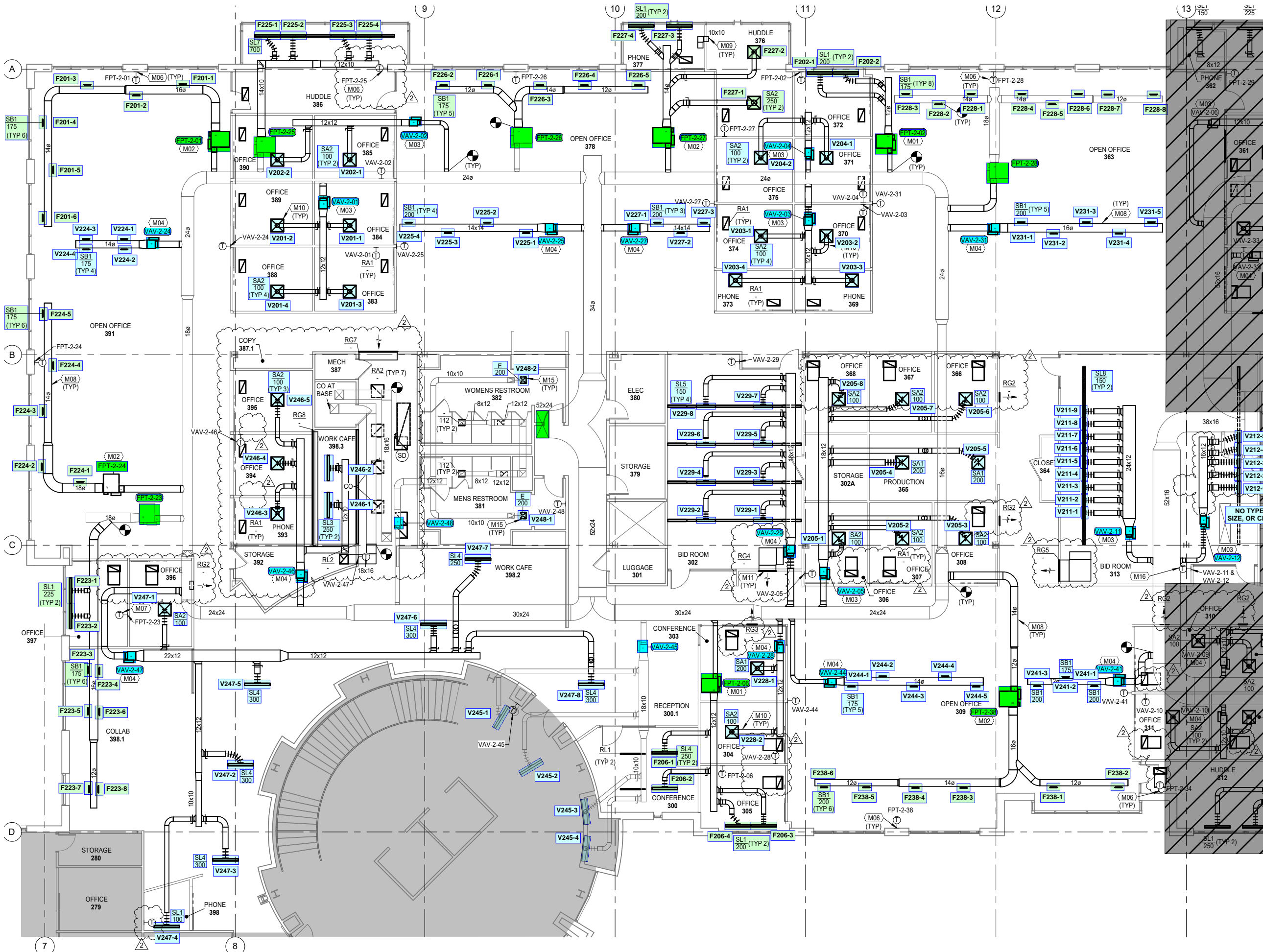


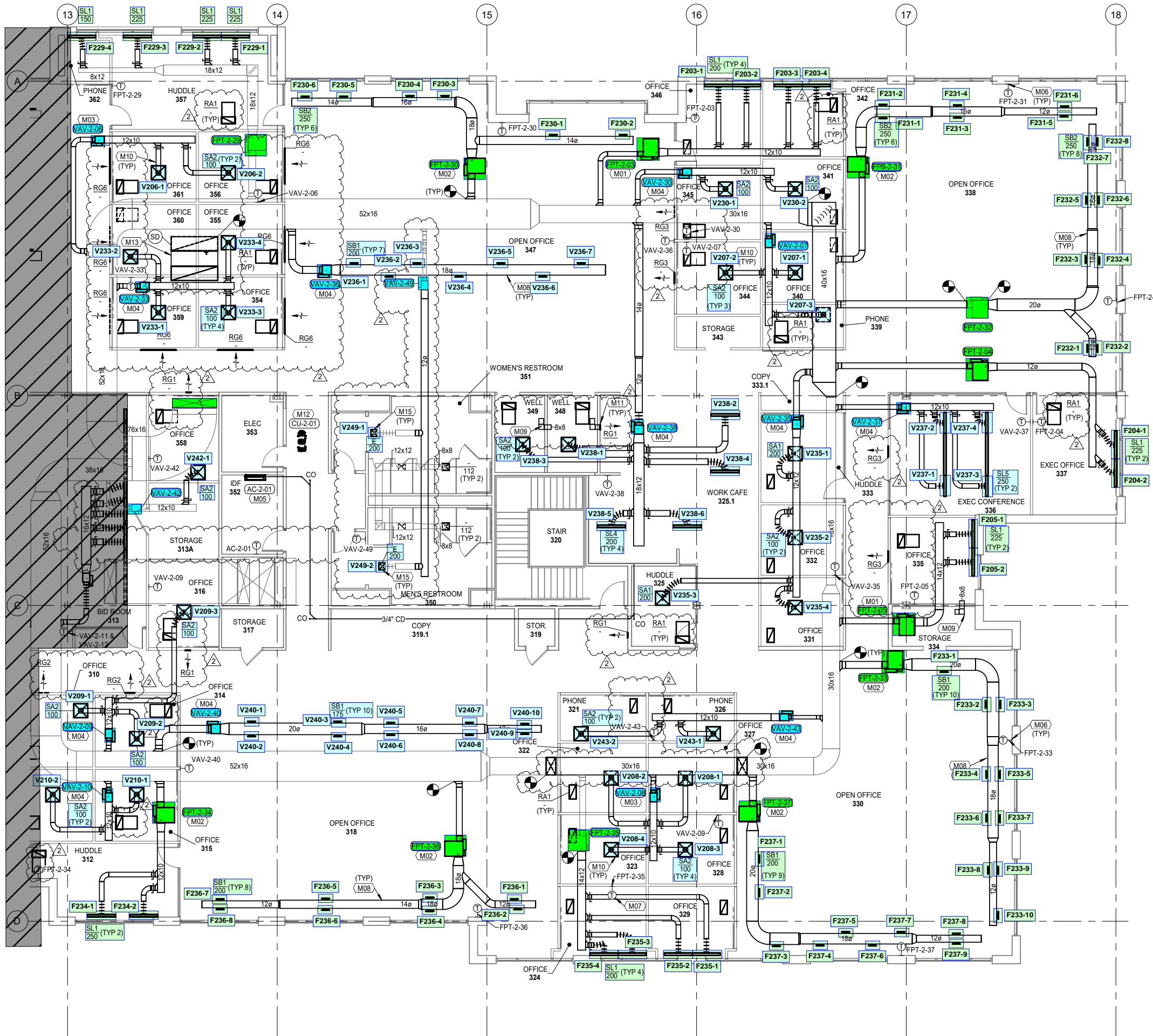
- M01 PROVIDE NEW FAN POWERED TERMINAL UNIT. SUPPORT TERMINAL UNIT FROM STRUCTURE ABOVE WITH ALL THREADED ROD. PROVIDE FLEXIBLE CONNECTOR ON THE INLET AND DISCHARGE DUCT CONNECTION. VERIFY HANDING OF THE TERMINAL UNIT PRIOR TO ORDERING TO MAKE SURE RECOMMENDED CLEARANCES ARE MAINTAINED. PROVIDE NEW DDC THERMOSTAT WITH WHITE COVER.
- M02 INSTALL RELOCATED FAN POWERED TERMINAL UNIT. SUPPORT TERMINAL UNIT FROM STRUCTURE ABOVE WITH THREADED ROD. PROVIDE NEW DDC THERMOSTAT WITH WHITE COVER. REBALANCE FOR NEW AIRFLOW.
- M03 PROVIDE NEW VAV TERMINAL UNIT. SUPPORT TERMINAL UNIT FROM STRUCTURE ABOVE WITH THREADED ROD. PROVIDE FLEXIBLE CONNECTOR ON THE INLET DUCT CONNECTION. VERIFY HANDING OF TERMINAL UNIT PRIOR TO ORDERING TO ENSURE RECOMMENDED SERVICE CLEARANCES ARE MAINTAINED. PROVIDE NEW DDC THERMOSTAT WITH WHITE COVER.
- M04 INSTALL RELOCATED VAV TERMINAL UNIT. SUPPORT TERMINAL UNIT FROM STRUCTURE ABOVE WITH THREADED ROD. PROVIDE NEW DDC THERMOSTAT WITH WHITE COVER. REBALANCE FOR NEW AIRFLOW.
- M06 PROVIDE INSULATED BACK BOX FOR THERMOSTATS INSTALLED ON THE PERIMETER.
- M07 LOCATE THERMOSTAT OVER FURNITURE BRIDGE. COORDINATE WITH ARCHITECTURAL SET.
- M08 PROVIDE HARD DUCT AND ASSOCIATED CONNECTIONS IN ALL EXPOSED AREAS. PAINT DUCT PER ARCHITECTURAL COLOR SELECTION.
- M09 PROVIDE BOOT HORIZONTAL "L" TRANSFER OPENINGS. MOUNT AS HIGH AS STRUCTURE WILL ALLOW. REFER TO DRAWINGS FOR INDICATION OF DUCT SIZE.
- M10 HARD DUCT INTO DIFFUSER, NO FLEX DUCT VISIBLE BY ADJACENT OPEN OFFICE SPACES.
- M11 PROVIDE TRANSFER GRILLE APPROXIMATELY WHERE SHOWN. MOUNT AS HIGH AS STRUCTURE WILL ALLOW. COORDINATE COLOR WITH WALL FINISH AND CONFIRM WITH ARCHITECT.
- M15 REINSTALL EXISTING DIFFUSERS AND EXHAUST GRILLES IN RESTROOM. REINSTALL AT APPROXIMATELY SAME LOCATION IN NEW CEILING. INTERLOCK THE EXHAUST WITH LIGHTSWITCH CONTROLS.
- M16 PROVIDE NEW DDC THERMOSTAT WITH WHITE COVER. THERMOSTAT TO CONTROL BOTH NEW VAV BOXES. VAV-2-11 & VAV-2-12



FLOOR PLAN LEVEL 2 - A - MECHANICAL NEW WORK

**FLOOR PLAN NOTES**

- M01 PROVIDE NEW FAN POWERED TERMINAL UNIT. SUPPORT TERMINAL UNIT FROM STRUCTURE ABOVE WITH ALL THREADED ROD. PROVIDE FLEXIBLE CONNECTOR ON THE INLET AND DISCHARGE DUCT CONNECTION. VERIFY HANDING OF THE TERMINAL UNIT PRIOR TO ORDERING TO MAKE SURE RECOMMENDED CLEARANCES ARE MAINTAINED. PROVIDE NEW DDC THERMOSTAT WITH WHITE COVER.
- M02 INSTALL RELOCATED FAN POWERED TERMINAL UNIT. SUPPORT TERMINAL UNIT FROM STRUCTURE ABOVE WITH THREADED ROD. PROVIDE NEW DDC THERMOSTAT WITH WHITE COVER. REBALANCE FOR NEW AIRFLOW.
- M03 PROVIDE NEW VAV TERMINAL UNIT. SUPPORT TERMINAL UNIT FROM STRUCTURE ABOVE WITH THREADED ROD. PROVIDE FLEXIBLE CONNECTOR ON THE INLET DUCT CONNECTION. VERIFY HANDING OF TERMINAL UNIT PRIOR TO ORDERING TO ENSURE RECOMMENDED SERVICE CLEARANCES ARE MAINTAINED. PROVIDE NEW DDC THERMOSTAT WITH WHITE COVER.
- M04 INSTALL RELOCATED VAV TERMINAL UNIT. SUPPORT TERMINAL UNIT FROM STRUCTURE ABOVE WITH THREADED ROD. PROVIDE NEW DDC THERMOSTAT WITH WHITE COVER. REBALANCE FOR NEW AIRFLOW.
- M05 PROVIDE NEW WALL MOUNTED, DUCTLESS SPLIT SYSTEM SUPPORTED IN ACCORDANCE WITH THE MANUFACTURER'S INSTALLATION GUIDELINES. PROVIDE WITH CONDENSATE PUMP. ROUTE 3/4" CONDENSATE PER MANUFACTURER'S REQUIREMENTS AND INDIRECT WASTE TO HUB DRAIN BELOW SINK IN WORK CAFE 325.1.
- M06 PROVIDE INSULATED BACK BOX FOR THERMOSTATS INSTALLED ON THE PERIMETER. LOCATE THERMOSTAT OVER FURNITURE BRIDGE. COORDINATE WITH ARCHITECTURAL SET.
- M07 PROVIDE HARD DUCT AND ASSOCIATED CONNECTIONS IN ALL EXPOSED AREAS. PAINT DUCT PER ARCHITECTURAL COLOR SELECTION.
- M09 PROVIDE BOOT HORIZONTAL "L" TRANSFER OPENINGS. MOUNT AS HIGH AS STRUCTURE WILL ALLOW. REFER TO DRAWINGS FOR INDICATION OF DUCT SIZE.
- M10 HARD DUCT INTO DIFFUSER. NO FLEX DUCT VISIBLE BY ADJACENT OPEN OFFICE SPACES. PROVIDE TRANSFER GRILLE APPROXIMATELY WHERE SHOWN. MOUNT AS HIGH AS STRUCTURE WILL ALLOW. COORDINATE COLOR WITH WALL FINISH AND CONFIRM WITH ARCHITECT.
- M11 PROVIDE CONDENSING UNIT INSTALLED ON THE ROOF ON PRE-MANUFACTURED EQUIPMENT SUPPORTS EQUAL TO DURA-BLOCK. SHIM SUPPORTS AS REQUIRED FOR A LEVEL INSTALLATION IN ACCORDANCE WITH MANUFACTURER'S REQUIREMENTS.
- M13 PROVIDE 80x24 DUCT. FIELD VERIFY EXACT DIMENSION. ELBOW UP AND TERMINATE AT BOTTOM OF JOIST. MAINTAIN 12" BELOW DECK.
- M15 REINSTALL EXISTING DIFFUSERS AND EXHAUST GRILLES IN RESTROOM. REINSTALL AT APPROXIMATELY SAME LOCATION IN NEW CEILING. INTERLOCK THE EXHAUST WITH LIGHTSWITCH CONTROLS.



**FLOOR PLAN LEVEL 2 - B - MECHANICAL NEW WORK**