

Report By:

National TAB
1329 E. KEMPER ROAD
SUITE 4210
CINCINNATI, OH 45246



Report: EVALUATION
Function: Test, Adjust, & Balance
Date: 10/31/2024
Completed By: National TAB

PROJECT
Chili's - Orlando, FL

12172 S Apopka Vineland Rd

Orlando, FL 32836

Client

Brinker
3000 Olympus Blvd
Coppell, TX 75019

National TAB

Project: Chili's - Orlando, FL

Table Of Contents

Section	Page #
Summary	3
Remarks	4
Balance Schedule	17
AHU/RTU	18
FAN - Exhaust	30
FAN - Supply	38
Kitchen Hood Type I	42
Kitchen Hood Type II	50

The purpose of this evaluation at Chili's in Orlando, FL was to address general issues within the HVAC system. When speaking with the manager upon arrival, they said they have had no complaints of discomfort or humidity within the building since the newer RTU's have been installed.

Upon initial inspection of the inside of the building, building pressure was slightly negative at -0.0114" which is within tolerance of the IMC building pressure. Overall, building maintained temperature and humidity within tolerance to make building comfortable. On the roof, older units have some wear on them as well as several issues as shown on the remarks section of this report.

It is recommended to resolve all issues listed in the remarks section. After these issues are resolved a general balance should be done on the building to ensure positive pressure of the building and correct airflow on all units to make the building as comfortable as possible.

Issue List

- MUA#1 sheaves are misaligned
- RTU#1 and RTU#4 has dirty final filters installed
- RTU#2 and RTU#6 evaporator coils are dirty
- RTU#2 and RTU#6 have excessive buildup on blower wheel blades
- RTU#2 economizer is not functional
- RTU#2 is missing disconnect
- RTU#4 has low pressure switch alarm on compressor 1
- RTU#4 outside air filter is becoming impacted
- RTU#5 and RTU#6 do not have OA filters installed
- Smoke detector 24VAC wires are not plugged into terminal on AC#4
- Smoke Detector dust plugs need to be removed from RTU#1
- Units are jumped into occupancy



Chili's - Orlando, FL

Project Issue Information

Issue Name : MUA#1 sheaves are misaligned
Description : Shaves are not aligned causing fan to vibrate and make excessive noise. Sheaves need to be aligned in order to prevent further damage done to the fan.
Created By : National TAB **Assigned To :** National TAB - Ian Fuller
Status : Open
Priority : High **Asset Tag :**
Originated Date : 01/13/2025 - Ian Fuller - National TAB

Project Issue Response Details

- **01/13/2025 National TAB - Ian Fuller**



01/13/2025



Chili's - Orlando, FL

Project Issue Information

Issue Name : RTU#1 and RTU#4 has dirty final filters installed
Description : Recommended to replace final filters with new MERV 7 filters.
Created By : National TAB **Assigned To :** National TAB - Ian Fuller
Status : Open
Priority : Medium **Asset Tag :**
Originated Date : 01/13/2025 - Ian Fuller - National TAB

Project Issue Response Details

- **01/13/2025 National TAB - Ian Fuller**



01/13/2025



Chili's - Orlando, FL

Project Issue Information

Issue Name : RTU#2 and RTU#6 evaporator coils are dirty
Description : Recommended to clean coils with cold water in order to improve air flow as well as cooling of unit.
Created By : National TAB **Assigned To :** National TAB - Ian Fuller
Status : Open
Priority : Urgent **Asset Tag :**
Originated Date : 01/13/2025 - Ian Fuller - National TAB

Project Issue Response Details

- **01/13/2025 National TAB - Ian Fuller**



01/13/2025



01/13/2025



Chili's - Orlando, FL

Project Issue Information

Issue Name : RTU#2 and RTU#6 have excessive buildup on blower wheel blades
Description : Recommended to clean blades of debris in order to improve efficiency as well as air flow of the unit.
Created By : National TAB **Assigned To :** National TAB - Ian Fuller
Status : Open
Priority : Medium **Asset Tag :**
Originated Date : 01/13/2025 - Ian Fuller - National TAB

Project Issue Response Details

- **01/13/2025 National TAB - Ian Fuller**



01/13/2025



01/13/2025



Chili's - Orlando, FL

Project Issue Information

Issue Name : RTU#2 economizer is not functional
Description : Prodigy Board shows Alarm 147 indicating an OA damper issue. Currently economizer is not modulating and is fully closed.
Created By : National TAB **Assigned To :** National TAB - Ian Fuller
Status : Open
Priority : Urgent **Asset Tag :**
Originated Date : 01/13/2025 - Ian Fuller - National TAB

Project Issue Response Details

- **01/13/2025 National TAB - Ian Fuller**



01/13/2025



Chili's - Orlando, FL

Project Issue Information

Issue Name : RTU#2 is missing disconnect
Description : Unable to turn off unit at roof. Recommended to install disconnect.
Created By : National TAB **Assigned To :** National TAB - Ian Fuller
Status : Open
Priority : High **Asset Tag :**
Originated Date : 01/13/2025 - Ian Fuller - National TAB

Project Issue Response Details

- **01/13/2025 National TAB - Ian Fuller**



01/13/2025



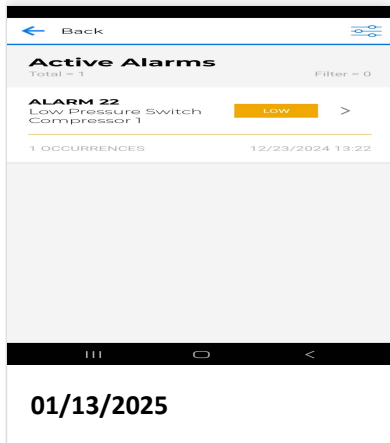
Chili's - Orlando, FL

Project Issue Information

Issue Name : RTU#4 has low pressure switch alarm on compressor 1
Description : Core app shows alarm 22 indicating a low pressure switch on compressor, turning off the compressor. Recommended, to resolve issue in order to fully cool space.
Created By : National TAB **Assigned To :** National TAB - Ian Fuller
Status : Open
Priority : **Urgent** **Asset Tag :**
Originated Date : 01/13/2025 - Ian Fuller - National TAB

Project Issue Response Details

- **01/13/2025 National TAB - Ian Fuller**





Chili's - Orlando, FL

Project Issue Information

Issue Name : RTU#4 outside air filter is becoming impacted
Description : Recommended to clean or replace filters.
Created By : National TAB **Assigned To :** National TAB - Ian Fuller
Status : Open
Priority : Medium **Asset Tag :**
Originated Date : 01/13/2025 - Ian Fuller - National TAB

Project Issue Response Details

- **01/13/2025 National TAB - Ian Fuller**



01/13/2025



Chili's - Orlando, FL

Project Issue Information

Issue Name : RTU#5 and RTU#6 do not have OA filters installed
Description : Recommended to install OA filters to prevent large debris entering unit. RTU#6 OA filter provided does not fit on the OA hood.
Created By : National TAB **Assigned To :** National TAB - Ian Fuller
Status : Open
Priority : Urgent **Asset Tag :**
Originated Date : 01/13/2025 - Ian Fuller - National TAB

Project Issue Response Details

- **01/13/2025 National TAB - Ian Fuller**



01/13/2025



01/13/2025



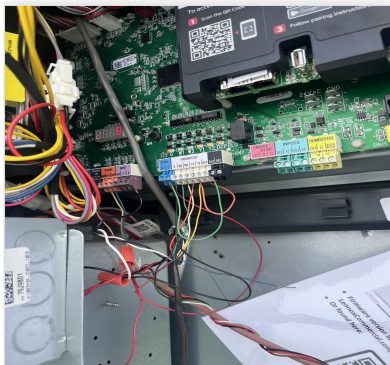
Chili's - Orlando, FL

Project Issue Information

Issue Name : Smoke detector 24VAC wires are not plugged into terminal on AC#4
Description : Recommended to run wires to terminal in order for smoke detector to function in unit.
Created By : National TAB **Assigned To :** National TAB - Ian Fuller
Status : Open
Priority : Urgent **Asset Tag :**
Originated Date : 01/13/2025 - Ian Fuller - National TAB

Project Issue Response Details

- **01/13/2025 National TAB - Ian Fuller**



01/13/2025



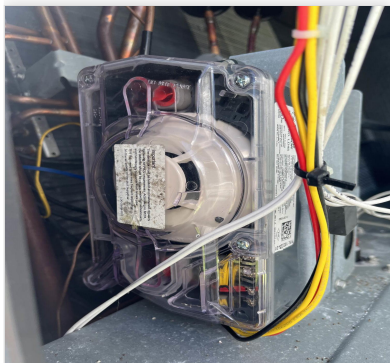
Chili's - Orlando, FL

Project Issue Information

Issue Name : Smoke Detector dust plugs need to be removed from RTU#1
Description : Recommended to remove dust plugs in order for smoke detectors to properly work.
Created By : National TAB **Assigned To :** National TAB - Ian Fuller
Status : Open
Priority : Medium **Asset Tag :**
Originated Date : 01/13/2025 - Ian Fuller - National TAB

Project Issue Response Details

- **01/13/2025 National TAB - Ian Fuller**



01/13/2025



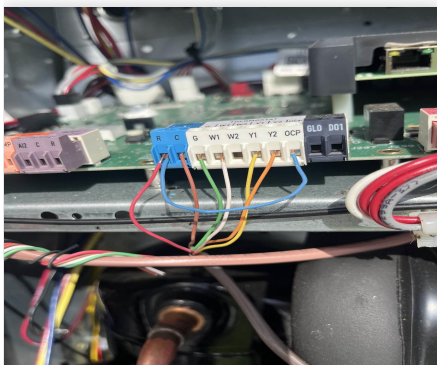
Chili's - Orlando, FL

Project Issue Information

Issue Name : Units are jumped into occupancy
Description : Because unit are jumped into occupancy outside air dampers are always open. This can lead to poor temperature regulation and humidity issues within the building. Recommended to run occupancy wire from thermostat and set up schedule for occupied and unoccupied hours.

Created By : National TAB **Assigned To :** National TAB - Ian Fuller
Status : Open
Priority : High **Asset Tag :**
Originated Date : 01/13/2025 - Ian Fuller - National TAB

Project Issue File Details



01/13/2025

AIR BALANCE SCHEDULE

UNIT	AREA SERVED	HVAC SUPPLY		HVAC RETURN		HVAC OUTDOOR		OA %		HOOD MAKE-UP		HOOD EXHAUST		GENERAL EXH.	
		DESIGN	ACTUAL	DESIGN	ACTUAL	DESIGN	ACTUAL	DESIGN	ACTUAL	DESIGN	ACTUAL	DESIGN	ACTUAL	DESIGN	ACTUAL
AC-1	DINING		3823	0	3140		683	#DIV/0!	17.9%						
AC-2	DINING		1869	0	1869		0	#DIV/0!	0.0%						
AC-3	DINING		4023		4023		0		0.0%						
AC-4	KITCHEN		5280		4298		982		18.6%						
AC-5	BAR		3614		3154		460		12.7%						
AC-6	BOH		4140	0	3673		467	#DIV/0!	11.3%						
MUA-1											621				
MUA-2											2450				
EF-1	FRYER HOOD											2333			
EF-2	GRILL HOOD LEFT											1056			
EF-3	OVEN HOOD											829			
EF-4	GRILL HOOD RIGHT											1460			
EF-5	HOOD#3														0
EF-6	RESTROOMS														212
EF-7	DISWASHER														421
TOTALS		0	22749	0	20157	0	2592			0	3071	0	5678	0	633

NET BUILDING AIRFLOW CALCULATION

TOTALS	DESIGN	ACTUAL
TOTAL OA	0	5663
TOTAL EXHAUST	0	6311
NET AIRFLOW	0	-648

DOOR TESTED	BUILDING PRESSURE MEASUREMENTS (IN. H2O)
FRONT	-0.0106
SIDE	
REAR	-0.0122
AVERAGE	-0.0114

FINAL CHECKS

ACTUAL NET AIRFLOW COINCIDES WITH DESIGN:	✘
MEASURED PRESSURES COINCIDES WITH ACTUAL NET AIRFLOW:	✔
PRESSURE FALLS WITHIN IMC TOLERANCE OF +/- 0.02" W.C.	✔

NOTES:



National TAB

Project: Chili's - Orlando, FL

System/Unit: AHU/RTU



Asset: RTU1

AREA:

Unit Data		
	Design	Actual
MFG	NA	LENNOX
Serial Num	-	5623J02995
Model Num	NA	LGT092H4EM1Y
Type	-	RTU
Configuration	-	VERTICAL
Num OA Filters 1	-	2
OA Filter Size 1	-	23X14
Num Final Filter 1	-	4
Final Filter Size 1	-	20X25X2

Motor Data		
	Design	Actual
Motor MFG	-	EBMPAPST
Frame	-	N/A
Horsepower	-	N/A
Motor Rpm	-	2200
Phase	-	3
Rated Voltage	-	200-240
Rated Amperage	-	8.7

Drive Data		Actual
Motor Sheave Size		DD
Motor Bore Size		DD
Motor Sheave SetPt		DD
Fan Sheave Size		DD
Fan Sheave Bore		DD
Belt CL Distance		DD
Num of Belts		DD
Belt Size		DD
Belt Alignment		DD

Test Data		
	Design	Actual
SF CFM	-	3823
RA CFM	-	3140
OA CFM	-	683
SF Rotation	-	CCW
SF System SetPt	-	75%
RA Damper Position	-	70%
Min OA Damper Position	-	30%
Min OA Damper Type	-	ECONOMIZER

Performance Data		
	Design	Actual
MA Plenum SP	-	-0.21"
Fan Suction SP	-	-0.41"
Fan Discharge SP	-	0.18"
Total ESP	-	0.39"
Fan Total SP	-	0.59"

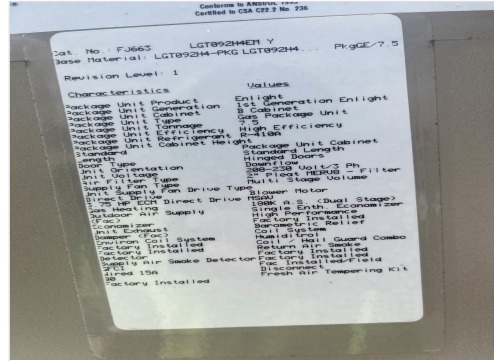
General		Actual
Fan Rotation Correct		YES
Unit Filters Clean		NO
Condensate Drain Installed		YES

Completed By: Ian Fuller on 12/23/2024

Notes:
 OA TEMP (DB/WB): 72.1 F / 67.9 F
 SA TEMP (DB/WB): 54.3 F / 51.3 F

Written By: Ian Fuller on 12/23/2024

Unit Data - PHOTO LOG



01/13/2025



01/13/2025



National TAB

Project: Chili's - Orlando, FL

System/Unit: AHU/RTU



Asset: RTU2

AREA:

Unit Data		
	Design	Actual
MFG	NA	LENNOX
Serial Num	-	5613K01731
Model Num	NA	LGH060H4ES2Y
Type	-	RTU
Configuration	-	VERTICAL
Num OA Filters 1	-	2
OA Filter Size 1	-	15.5X19.5
Num Final Filter 1	-	4
Final Filter Size 1	-	20X20X2

Motor Data		
	Design	Actual
Motor MFG	-	N/A
Frame	-	N/A
Horsepower	-	1.0
Motor Rpm	-	1050
Phase	-	1
Rated Voltage	-	120
Rated Amperage	-	12.8

Drive Data	
	Actual
Motor Sheave Size	DD
Motor Bore Size	DD
Motor Sheave SetPt	DD
Fan Sheave Size	DD
Fan Sheave Bore	DD
Belt CL Distance	DD
Num of Belts	DD
Belt Size	DD
Belt Alignment	DD

Test Data		
	Design	Actual
SF CFM	-	1869
RA CFM	-	1869
OA CFM	-	0
SF Rotation	-	CCW
SF System SetPt	-	68%
RA Damper Position	-	100%
Min OA Damper Position	-	0%
Min OA Damper Type	-	ECONOMIZER

Performance Data		
	Design	Actual
MA Plenum SP	-	-0.14"
Fan Suction SP	-	-0.29"
Fan Discharge SP	-	0.10"
Total ESP	-	0.24"
Fan Total SP	-	0.39"

General	
	Actual
Fan Rotation Correct	YES
Unit Filters Clean	NO
Condensate Drain Installed	YES

Completed By: Ian Fuller on 12/23/2024

Notes:

OA TEMP (DB/WB): 72.1 F / 67.9 F

SA TEMP (DB/WB): 51.6 F / 47.8 F

OA DAMPER IS NOT FUNCTIONING

Written By: Ian Fuller on 12/23/2024

Unit Data - PHOTO LOG



01/13/2025



01/13/2025



National TAB

Project: Chili's - Orlando, FL
System/Unit: AHU/RTU



Asset: RTU3

AREA:

Unit Data		
	Design	Actual
MFG	NA	LENNOX
Serial Num	-	5623M03184
Model Num	NA	LGT092H4EM1Y
Type	-	RTU
Configuration	-	VERTICAL
Num OA Filters 1	-	0
OA Filter Size 1	-	N/A
Num Final Filter 1	-	4
Final Filter Size 1	-	20X25X2

Motor Data		
	Design	Actual
Motor MFG	-	EBMPAPST
Frame	-	N/A
Horsepower	-	N/A
Motor Rpm	-	2200
Phase	-	3
Rated Voltage	-	200-240
Rated Amperage	-	8.7

Drive Data	
	Actual
Motor Sheave Size	DD
Motor Bore Size	DD
Motor Sheave SetPt	DD
Fan Sheave Size	DD
Fan Sheave Bore	DD
Belt CL Distance	DD
Num of Belts	DD
Belt Size	DD
Belt Alignment	DD

Test Data		
	Design	Actual
SF CFM	-	4023
RA CFM	-	4023
OA CFM	-	0
SF Rotation	-	CCW
SF System SetPt	-	85%
RA Damper Position	-	N/A
Min OA Damper Position	-	N/A
Min OA Damper Type	-	NO OA

Performance Data		
	Design	Actual
MA Plenum SP	-	-0.25"
Fan Suction SP	-	-0.47"
Fan Discharge SP	-	0.11"
Total ESP	-	0.36"
Fan Total SP	-	0.58"

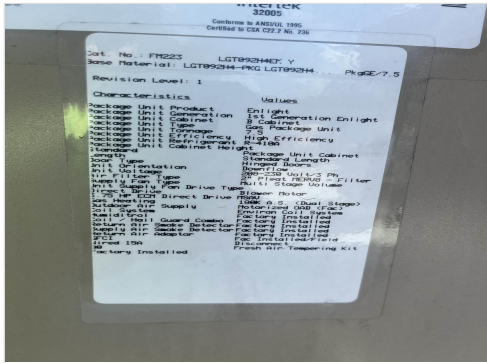
General	
	Actual
Fan Rotation Correct	YES
Unit Filters Clean	NO
Condensate Drain Installed	YES

Completed By: Ian Fuller on 12/23/2024

Notes:
OA TEMP (DB/WB):
SA TEMP (DB/WB):

Written By: Ian Fuller on 12/23/2024

Unit Data - PHOTO LOG





National TAB

Project: Chili's - Orlando, FL
System/Unit: AHU/RTU



Asset: RTU4

AREA:

Unit Data		
	Design	Actual
MFG	N/A	LENNOX
Serial Num	-	5623K01289
Model Num	N/A	LGT180H4MS1Y
Type	-	RTU
Configuration	-	VERTICAL
Num OA Filters 1	-	3
OA Filter Size 1	-	23X13
Num Final Filter 1	-	6
Final Filter Size 1	-	20X25X2

Motor Data		
	Design	Actual
Motor MFG	-	
Frame	-	
Horsepower	-	
Motor Rpm	-	
Phase	-	
Rated Voltage	-	
Rated Amperage	-	

Drive Data	
	Actual
Motor Sheave Size	4.5"
Motor Bore Size	1.125"
Motor Sheave SetPt	2.5 TURNS OUT
Fan Sheave Size	9.5"
Fan Sheave Bore	1.1875"
Belt CL Distance	20.75"
Num of Belts	1
Belt Size	BX61
Belt Alignment	GOOD

Test Data		
	Design	Actual
SF CFM	-	5280
RA CFM	-	4298
OA CFM	-	982
SF Rotation	-	CCW
SF System SetPt	-	60 HZ
RA Damper Position	-	68%
Min OA Damper Position	-	32%
Min OA Damper Type	-	ECONOMIZER
OA Enthalpy Setpt	-	5

Performance Data		
	Design	Actual
MA Plenum SP	-	-0.31"
Fan Suction SP	-	-0.54"
Fan Discharge SP	-	0.33"
Total ESP	-	0.64"
Fan Total SP	-	0.87"

General	
	Actual
Fan Rotation Correct	YES
Unit Filters Clean	NO
Condensate Drain Installed	YES

Completed By: Ian Fuller on 12/23/2024

Notes:

OA TEMP (DB/WB): 72.1 F / 67.9 F

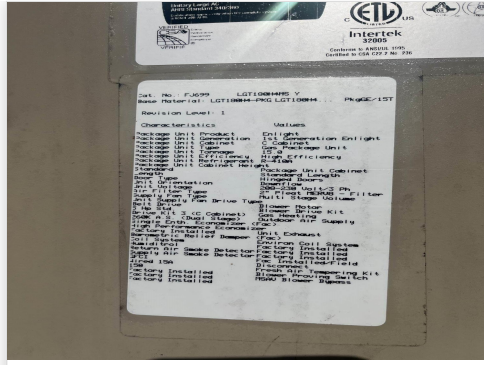
SA TEMP (DB/WB): 54.0 F / 49.9 F

Written By: Ian Fuller on 12/23/2024

Unit Data - PHOTO LOG



01/13/2025



01/13/2025



National TAB

Project: Chili's - Orlando, FL

System/Unit: AHU/RTU



Asset: RTU5

AREA:

Unit Data		
	Design	Actual
MFG	N/A	LENNOX
Serial Num	-	5623M03185
Model Num	N/A	LGT092H4EM1Y
Type	-	RTU
Configuration	-	VERTICAL
Num OA Filters 1	-	1
OA Filter Size 1	-	N/A
Num Final Filter 1	-	4
Final Filter Size 1	-	20X25X2

Motor Data		
	Design	Actual
Motor MFG	-	EBMPAPST
Frame	-	N/A
Horsepower	-	N/A
Motor Rpm	-	2200
Phase	-	3
Rated Voltage	-	200-240
Rated Amperage	-	8.7

Drive Data	
	Actual
Motor Sheave Size	DD
Motor Bore Size	DD
Motor Sheave SetPt	DD
Fan Sheave Size	DD
Fan Sheave Bore	DD
Belt CL Distance	DD
Num of Belts	DD
Belt Size	DD
Belt Alignment	DD

Test Data		
	Design	Actual
SF CFM	-	3614
RA CFM	-	3154
OA CFM	-	460
SF Rotation	-	CCW
SF System SetPt	-	68%
RA Damper Position	-	N/A
Min OA Damper Position	-	31%
Min OA Damper Type	-	OA DAMPER
OA Enthalpy Setpt	-	5

Performance Data		
	Design	Actual
MA Plenum SP	-	
Fan Suction SP	-	
Fan Discharge SP	-	
Total ESP	-	
Fan Total SP	-	

General	
	Actual
Fan Rotation Correct	YES
Unit Filters Clean	NO
Condensate Drain Installed	YES

Completed By: Ian Fuller on 12/23/2024

Notes:

OA TEMP (DB/WB): 72.1 F / 67.9 F
 SA TEMP (DB/WB): 53.3 F / 49.8 F

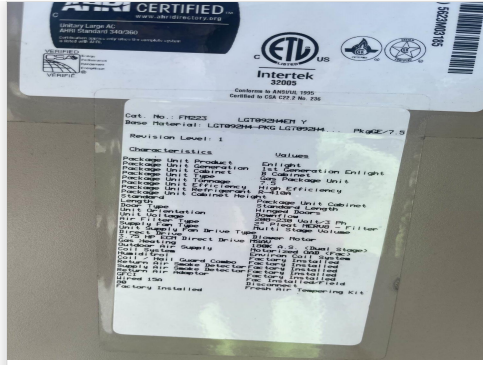
MISSING OA FILTER

Written By: Ian Fuller on 12/23/2024

Unit Data - PHOTO LOG



01/13/2025



01/13/2025



National TAB

Project: Chili's - Orlando, FL
System/Unit: AHU/RTU



Asset: RTU6

AREA:

Unit Data		
	Design	Actual
MFG	N/A	LENNOX
Serial Num	-	5614K09296
Model Num	N/A	LGH150S4BS4Y
Type	-	RTU
Configuration	-	VERTICAL
Num OA Filters 1	-	1
OA Filter Size 1	-	N/A
Num Final Filter 1	-	4
Final Filter Size 1	-	20X25X2

Motor Data		
	Design	Actual
Motor MFG	-	INTERLINK
Frame	-	56HZ
Horsepower	-	3.0
Motor Rpm	-	1745
Phase	-	3
Rated Voltage	-	200-230
Rated Amperage	-	7.8-7.4

Drive Data	
	Actual
Motor Sheave Size	5.0"
Motor Bore Size	0.875"
Motor Sheave SetPt	2.5 TURNS OUT
Fan Sheave Size	7.0"
Fan Sheave Bore	1.0"
Belt CL Distance	21.5"
Num of Belts	1
Belt Size	AX58
Belt Alignment	GOOD

Test Data		
	Design	Actual
SF CFM	-	4140
RA CFM	-	3673
OA CFM	-	467
SF Rotation	-	CCW
SF System SetPt	-	CCW
RA Damper Position	-	N/A
Min OA Damper Position	-	1.5"
Min OA Damper Type	-	MANUAL DAMPER
OA Enthalpy Setpt	-	5

Performance Data		
	Design	Actual
MA Plenum SP	-	-0.23"
Fan Suction SP	-	-0.39"
Fan Discharge SP	-	0.16"
Total ESP	-	0.39"
Fan Total SP	-	0.55"

General	
	Actual
Fan Rotation Correct	YES
Unit Filters Clean	NO
Condensate Drain Installed	YES

Completed By: Ian Fuller on 12/23/2024

Notes:

OA TEMP (DB/WB): 72.1 F / 67.9 F

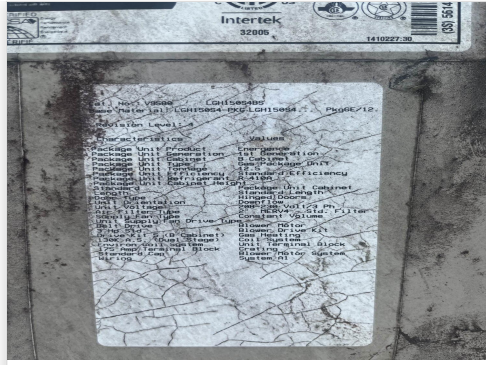
SA TEMP (DB/WB): 49.6 F / 47.1 F

Written By: Ian Fuller on 12/23/2024

Unit Data - PHOTO LOG



01/13/2025



01/13/2025



National TAB

Project: Chili's - Orlando, FL

System/Unit: FAN - Exhaust



Asset: EF1

AREA:

Unit Data		
	Design	Actual
MFG	NA	ILG
Model Num	NA	N/A
Serial Num	-	N/A
Type	-	UPBLAST
Configuration	-	VERTICAL

Test Data		
	Design	Actual
CFM	-	2333
Fan Rotation	-	CW

Motor Data		
	Design	Actual
Motor MFG	-	BALDOR
Frame	-	145T
Horsepower	-	1.5
Motor Rpm	-	1755
Phase	-	3
Voltage (rated)	-	230
Amperage (rated)	-	4.4
Service Factor	-	1.15

Drive Data	
	Actual
Motor Sheave Size	4.25"
Motor Bore Size	0.875"
Motor Sheave SetPt	2.5 TURNS OUT
Fan Sheave Size	5.0"
Fan Sheave Bore	0.75"
Belt CL Distance	6.0"
Num of Belts	1
Belt Size	AX22

Completed By: Ian Fuller on 12/23/2024

Notes:
FRYER HOOD

Written By: Ian Fuller on 12/23/2024

Unit Data - PHOTO LOG



01/13/2025



National TAB

Project: Chili's - Orlando, FL

System/Unit: FAN - Exhaust



Asset: EF2

AREA:

Unit Data		
	Design	Actual
MFG	NA	CAPTIVEAIRE
Model Num	NA	DU85HFA
Serial Num	-	5031958
Type	-	UPBLAST
Configuration	-	VERTICAL

Test Data		
	Design	Actual
CFM	-	1056
Fan RPM	-	1354
Fan Rotation	-	CCW
Motor RPM	-	47.1 HZ

Motor Data		
	Design	Actual
Motor MFG	-	HSSA
Frame	-	N/A
Horsepower	-	0.75
Motor Rpm	-	1725
Phase	-	3
Voltage (rated)	-	208-230
Amperage (rated)	-	2.6-2.5
Service Factor	-	1.15

Drive Data	
	Actual
Motor Sheave Size	DD
Motor Bore Size	DD
Motor Sheave SetPt	DD
Fan Sheave Size	DD
Fan Sheave Bore	DD
Belt CL Distance	DD
Num of Belts	DD
Belt Size	DD

Completed By: Ian Fuller on 12/23/2024

Notes:
GRIDDLE HOOD

Written By: Ian Fuller on 12/23/2024

Unit Data - PHOTO LOG



01/13/2025

Asset: EF3

AREA:

Unit Data		
	Design	Actual
MFG	NA	ILG
Model Num	NA	N/A
Serial Num	-	N/A
Type	-	UPBLAST
Configuration	-	VERTICAL

Test Data		
	Design	Actual
CFM	-	829
Fan Rotation	-	CW

Motor Data		
	Design	Actual
Motor MFG	-	MARATHON
Frame	-	56
Horsepower	-	0.5
Motor Rpm	-	1725
Phase	-	3
Voltage (rated)	-	208-230
Amperage (rated)	-	2.3-2.2
Service Factor	-	1.25

Drive Data	
	Actual
Motor Sheave Size	4.0"
Motor Bore Size	0.625"
Motor Sheave SetPt	4 TURNS OUT
Fan Sheave Size	4.0"
Fan Sheave Bore	0.75"
Belt CL Distance	5.5"
Num of Belts	1
Belt Size	N/A

Completed By: Ian Fuller on 12/23/2024

Unit Data - PHOTO LOG



01/13/2025



National TAB

Project: Chili's - Orlando, FL

System/Unit: FAN - Exhaust



Asset: EF4

AREA:

Unit Data		
	Design	Actual
MFG	NA	N/A
Model Num	NA	N/A
Serial Num	-	N/A
Type	-	UTILITY SET
Configuration	-	VERTICAL

Test Data		
	Design	Actual
CFM	-	1460
Fan Rotation	-	CW

Motor Data		
	Design	Actual
Motor MFG	-	NEMA
Frame	-	N/A
Horsepower	-	1.5
Motor Rpm	-	1740
Phase	-	3
Voltage (rated)	-	230
Amperage (rated)	-	3.9
Service Factor	-	1.15

Completed By: Ian Fuller on 12/23/2024

Unit Data - PHOTO LOG



01/13/2025



National TAB

Project: Chili's - Orlando, FL

System/Unit: FAN - Exhaust



Asset: EF6

AREA:

Unit Data		
	Design	Actual
MFG	NA	N/A
Model Num	NA	N/A
Serial Num	-	N/A
Type	-	DOWNBLAST
Configuration	-	VERTICAL

Test Data		
	Design	Actual
CFM	-	212
System SetPt	-	MAX

Completed By: Ian Fuller on 12/23/2024

Unit Data - PHOTO LOG



01/13/2025

Asset: EF7

AREA:

Unit Data		
	Design	Actual
MFG	N/A	CAPTIVEAIRE
Model Num	N/A	DU30HFA
Serial Num	-	5655069
Type	-	UPLBAST
Configuration	-	VERTICAL

Test Data		
	Design	Actual
CFM	-	421

Motor Data		
	Design	Actual
Motor MFG	-	HSSA
Frame	-	48Y
Horsepower	-	0.25
Motor Rpm	-	1400
Phase	-	1
Voltage (rated)	-	115
Amperage (rated)	-	4.0
Service Factor	-	1.0

Completed By: Ian Fuller on 12/23/2024

Notes:
DISHWASHER HOOD

Written By: Ian Fuller on 12/23/2024

Unit Data - PHOTO LOG



01/13/2025



National TAB

Project: Chili's - Orlando, FL

System/Unit: FAN - Supply



Asset: MUA1

AREA:

Unit Data		
	Design	Actual
MFG	NA	SUPREME FAN
Model Num	NA	SF-1010
Serial Num	-	0695-003
Type	-	MUA
Configuration	-	VERTICAL

Test Data		
	Design	Actual
CFM	-	621

General	
	Actual
Fan Rotation Correct	YES

Motor Data		
	Design	Actual
Motor MFG	-	CENTURY
Frame	-	J56
Horsepower	-	0.5
Motor Rpm	-	1725
Phase	-	3
Voltage (rated)	-	460/200-230
Amperage (rated)	-	1.0/1.8-2.0
Service Factor	-	1.25

Drive Data	
	Actual
Motor Sheave Size	4.25"
Motor Bore Size	0.625"
Fan Sheave Size	8.5"
Fan Sheave Bore	0.75"
Belt CL Distance	12.0"
Num of Belts	1
Belt Size	AX41
Belt Alignment Verified	NOT ALIGNED

Completed By: Ian Fuller on 12/23/2024

Notes:
20X12

Written By: Ian Fuller on 12/23/2024

Unit Data - PHOTO LOG



01/13/2025



National TAB

Project: Chili's - Orlando, FL

System/Unit: FAN - Supply



Asset: MUA2

AREA:

Unit Data		
	Design	Actual
MFG	N/A	LOREN COOK
Model Num	N/A	180 KSP 180KSP-B
Serial Num	-	008SF45372- 00/0000701
Type	-	MUA
Configuration	-	VERTICAL

Test Data		
	Design	Actual
CFM	-	2450
General		
	Actual	
Fan Rotation Correct	YES	

Motor Data		
	Design	Actual
Motor MFG	-	WEG
Frame	-	143/5T
Horsepower	-	1.5
Motor Rpm	-	1760
Phase	-	3
Voltage (rated)	-	208-230
Amperage (rated)	-	4.58-4.14
Service Factor	-	1.15

Drive Data	
	Actual
Motor Sheave Size	3.25"
Motor Bore Size	0.25"
Fan Sheave Size	7.75"
Fan Sheave Bore	1.0"
Belt CL Distance	20.0"
Num of Belts	1
Belt Size	AX54
Belt Alignment Verified	GOOD

Completed By: Ian Fuller on 12/23/2024

Notes:
2: 28X21

Written By: Ian Fuller on 12/23/2024

Unit Data - PHOTO LOG



01/13/2025



National TAB

Project: Chili's - Orlando, FL



System/Unit: Kitchen Hood Type I

Asset: HD1

AREA:

Unit Data		
	Design	Actual
MFG	NA	GREASE MASTER
Model Num	NA	GWC-9
Job / Serial Num	-	N/A
Type	-	TYPE II LOW PROXIMITY
Supply Plenum Type	-	SHORT CYCLE

Test Data Exhaust		
	Design	Actual
Filter Type	-	BAFFLE
Filter Size 1	-	20X16
Filter Qty 1	-	6
Filter AK factor size 1	-	2.08
Filter Total AK Area	-	12.48
Filter1 FPM	-	109
Filter2 FPM	-	128
Filter3 FPM	-	118
Filter4 FPM	-	122
Filter5 FPM	-	119
Filter6 FPM	-	110
Filter Ave FPM(corr)	-	117
CFM	-	1460

Cooking Equipment	
	Actual
Item 1	GRILL
Item 2	ROASTER

Completed By: Ian Fuller on 12/23/2024

Notes:
GRILL HOOD RIGHT

Written By: Ian Fuller on 12/23/2024

Unit Data - PHOTO LOG



01/13/2025



National TAB

Project: Chili's - Orlando, FL

System/Unit: Kitchen Hood Type I



Asset: HD2

AREA:

Unit Data		
	Design	Actual
MFG	NA	GREASE MASTER
Model Num	NA	N/A
Job / Serial Num	-	N/A
Type	-	TYPE I LOW PROXIMITY
Supply Plenum Type	-	SHORT CYCLE

Test Data Exhaust		
	Design	Actual
Filter Type	-	BAFFLE
Filter Size 1	-	20X16
Filter Size 2	-	16X16
Filter Qty 1	-	4
Filter Qty 2	-	1
Filter AK factor size 1	-	2.08
Filters AK factor size 2	-	1.62
Filter Total AK Area	-	9.94
Filter1 FPM	-	290
Filter2 FPM	-	267
Filter3 FPM	-	257
Filter4 FPM	-	182
Filter5 FPM	-	178
Filter Ave FPM(corr)	-	234
CFM	-	2333

Cooking Equipment	
	Actual
Item 1	FRYER

Completed By: Ian Fuller on 12/23/2024

Notes:
FRYER HOOD

Written By: Ian Fuller on 12/23/2024

Unit Data - PHOTO LOG



01/13/2025



National TAB

Project: Chili's - Orlando, FL

System/Unit: Kitchen Hood Type I



Asset: HD3

AREA:

Unit Data		
	Design	Actual
MFG	NA	GREASE MASTER
Model Num	NA	N/A
Job / Serial Num	-	N/A
Type	-	TYPE II LOW PROXIMITY

Test Data Exhaust		
	Design	Actual
Filter Type	-	BAFFLE
Filter Size 1	-	20X16
Filter Qty 1	-	2
Filter AK factor size 1	-	2.08
Filter Total AK Area	-	4.16
Filter1 FPM	-	0
Filter2 FPM	-	0
Filter Ave FPM(corr)	-	0
CFM	-	0

Cooking Equipment	
	Actual
Item 1	N/A

Completed By: Ian Fuller on 12/23/2024

Notes:
HOOD IS TURNED OFF

Written By: Ian Fuller on 12/23/2024



National TAB

Project: Chili's - Orlando, FL

System/Unit: Kitchen Hood Type I



Asset: HD4

AREA:

Unit Data		
	Design	Actual
MFG	NA	GREASE MASTER
Model Num	NA	GWC-9
Job / Serial Num	-	N/A
Type	-	TYPE II LOW PROXIMITY

Test Data Exhaust		
	Design	Actual
Filter Type	-	BAFFLE
Filter Size 1	-	20X16
Filter Qty 1	-	3
Filter AK factor size 1	-	2.08
Filter Total AK Area	-	6.24
Filter1 FPM	-	120
Filter2 FPM	-	151
Filter3 FPM	-	128
Filter Ave FPM(corr)	-	133
CFM	-	829

Cooking Equipment	
	Actual
Item 1	OVEN
Item 2	FRYER

Completed By: Ian Fuller on 12/23/2024

Notes:
OVEN HOOD

Written By: Ian Fuller on 12/23/2024

Unit Data - PHOTO LOG



01/13/2025

Asset: HD5

AREA:

Unit Data		
	Design	Actual
MFG	N/A	GREASE MASTER
Model Num	N/A	N/A
Type	-	TYPE I LOW PROXIMITY
Supply Plenum Type	-	SHORT CYCLE

Test Data Exhaust		
	Design	Actual
Filter Type	-	BAFFLE
Filter Size 1	-	20X16
Filter Qty 1	-	3
Filter AK factor size 1	-	2.08
Filter Total AK Area	-	6.24
Filter1 FPM	-	171
Filter2 FPM	-	163
Filter3 FPM	-	174
Filter Ave FPM(corr)	-	169
CFM	-	1056

Cooking Equipment	
	Actual
Item 1	GRIDDLE

Completed By: Ian Fuller on 12/23/2024

Notes:
GRILL HOOD LEFT

Written By: Ian Fuller on 12/23/2024

Unit Data - PHOTO LOG



01/13/2025

