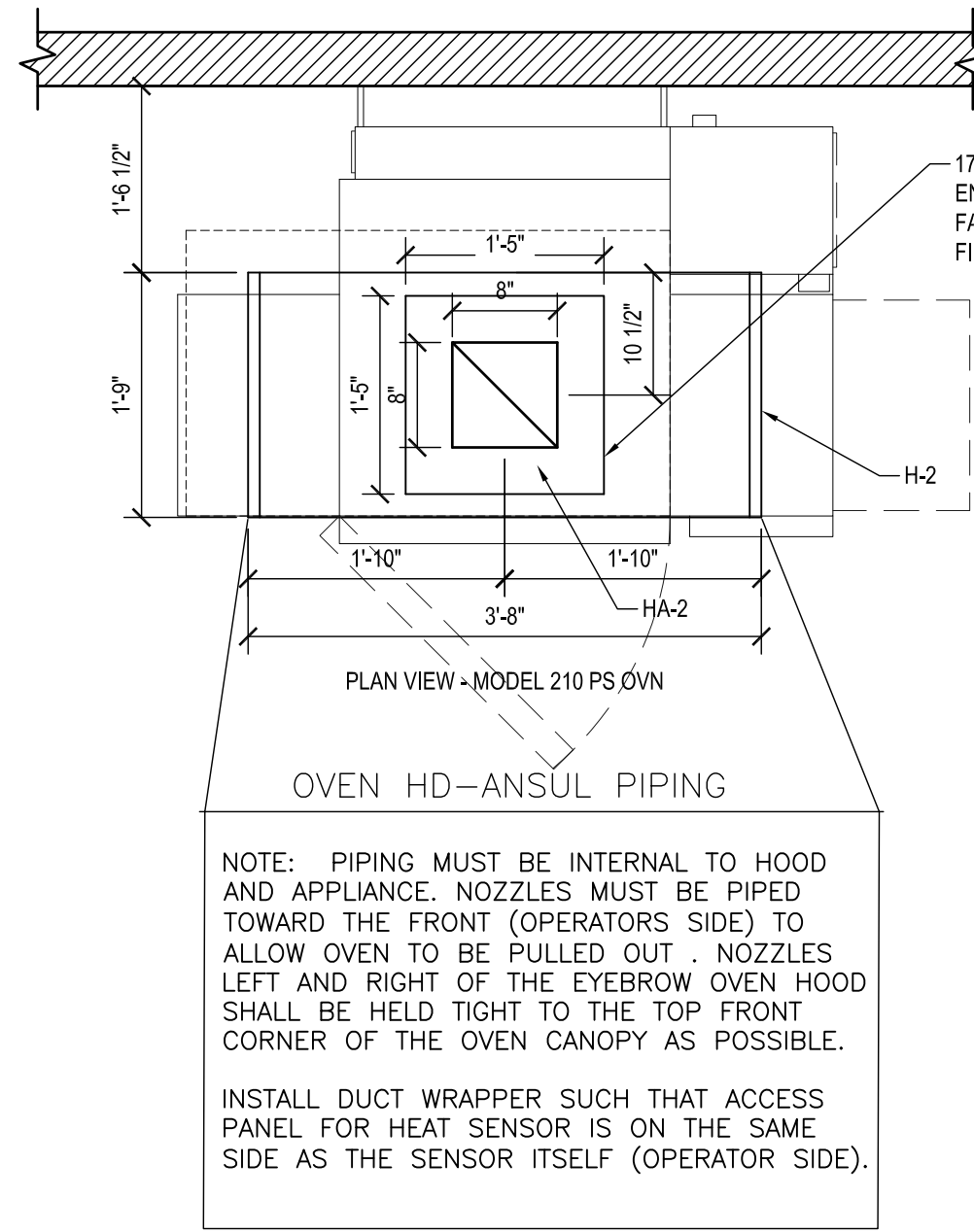
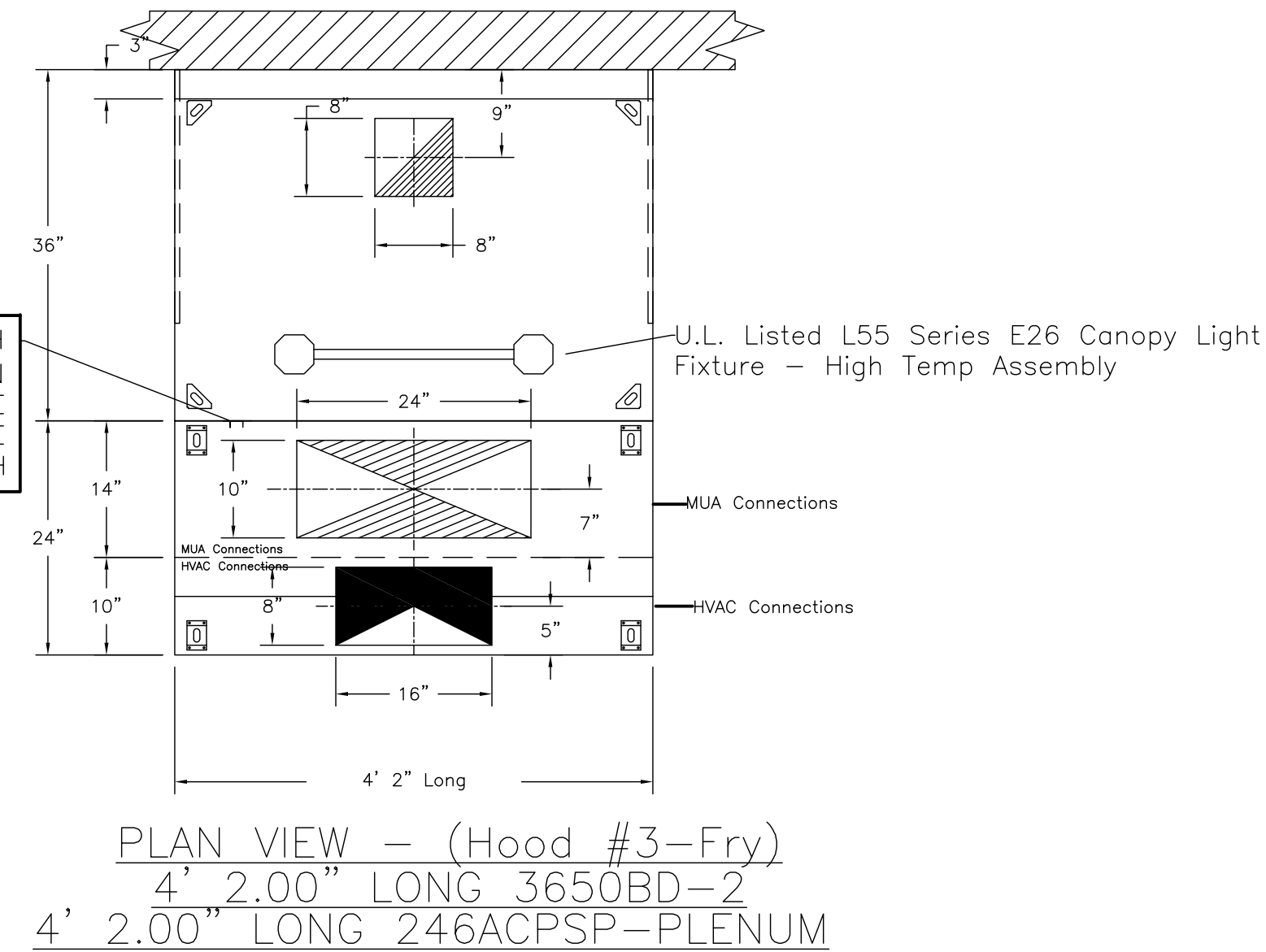
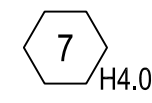


PLANS @ COOK LINE
3/4"=1'-0"
HOOD - (HD2-Oven)



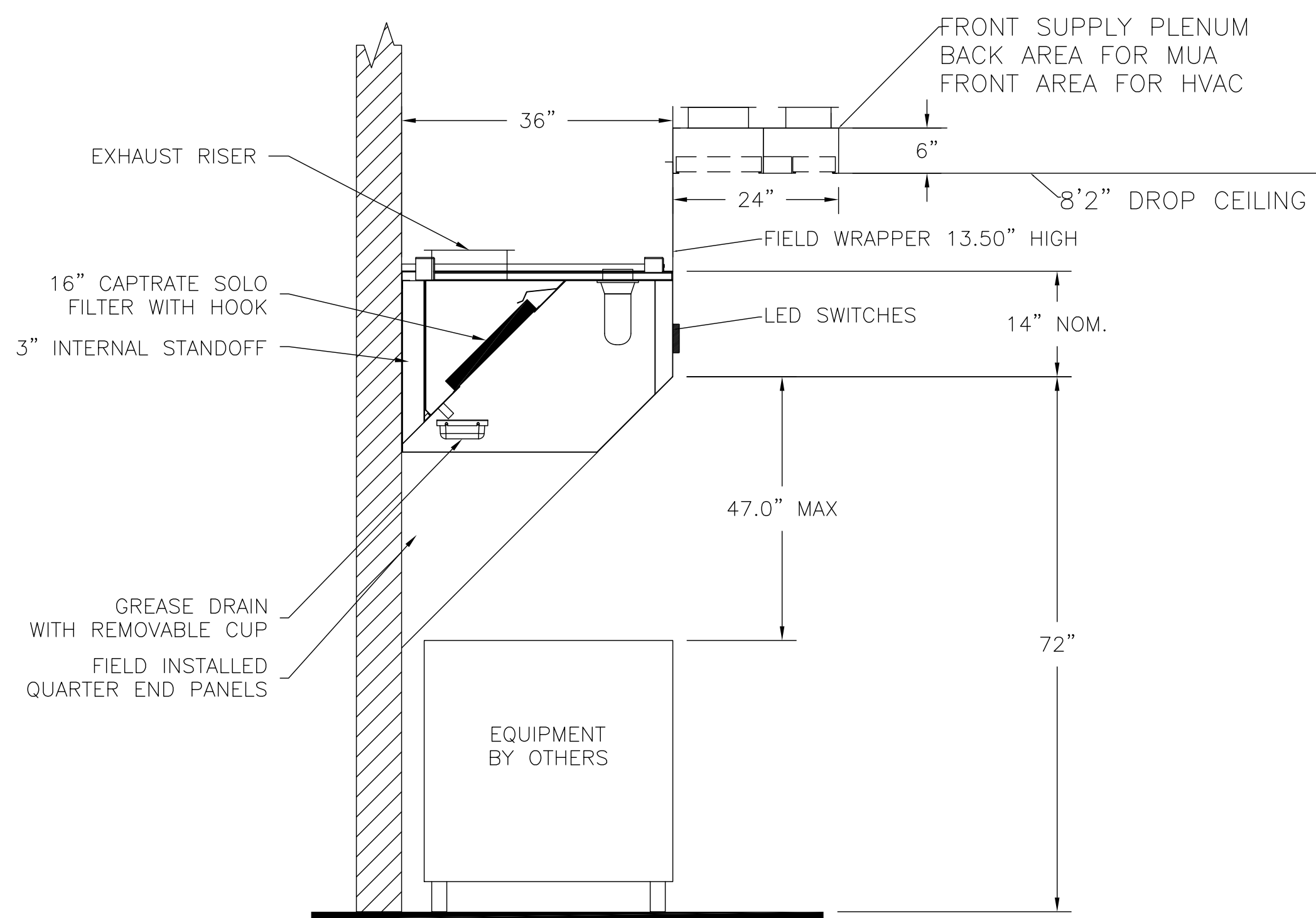
FAN/LIGHT SWITCH (HMI-2) FRYER FAN USE CAPTIVE-AIRE SUPPLIED CAT5 WIRE TO GRIDDLE HD SWITCH



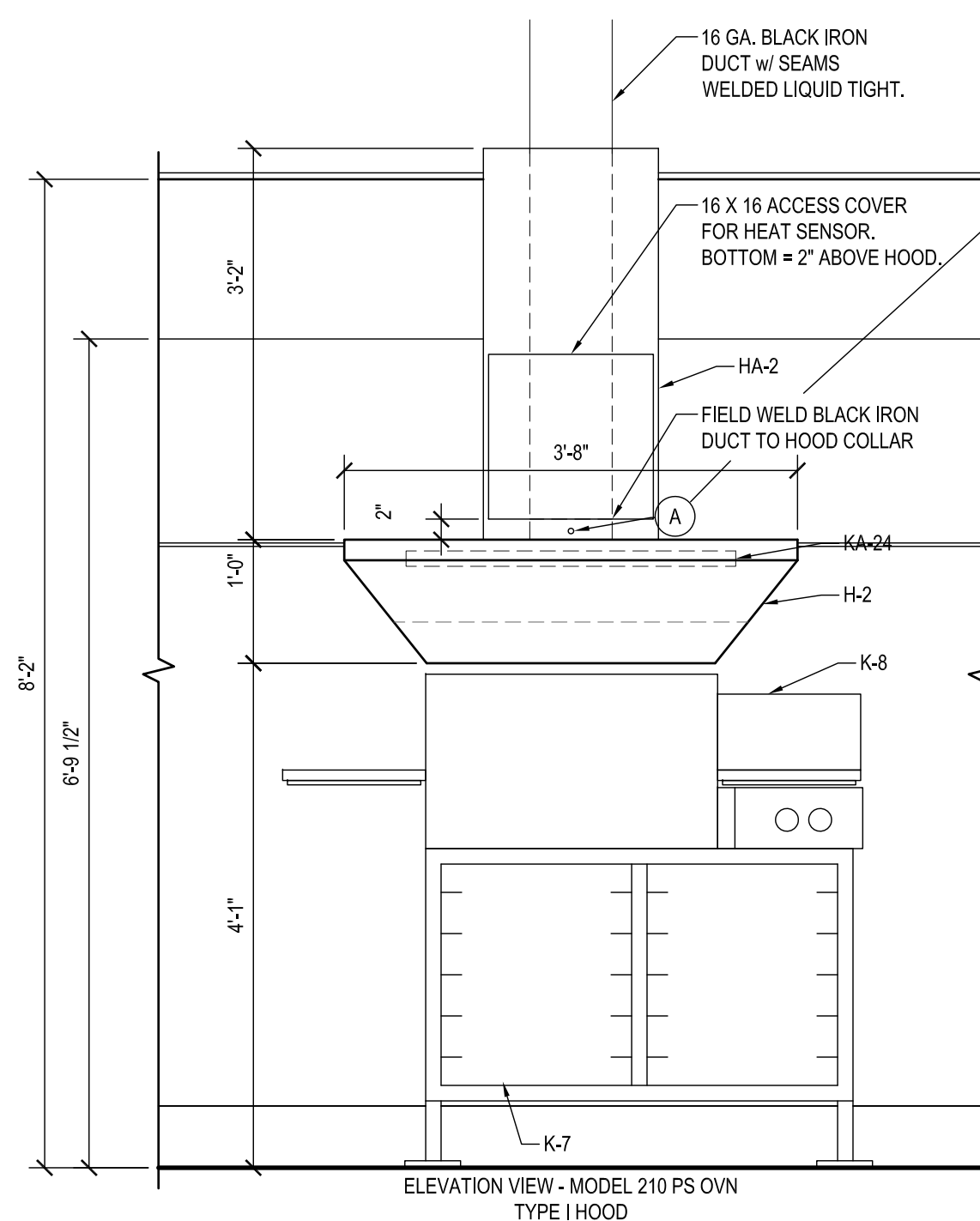
CAPTIVE-AIRE HOODS ARE BUILT IN COMPLIANCE WITH UL 710 AND NFPA 96 AND ARE RECOGNIZED BY ONE OR MORE OF THE FOLLOWING:

ETL SANITATION LISTED
ETL LISTED FILE# 3054804-001

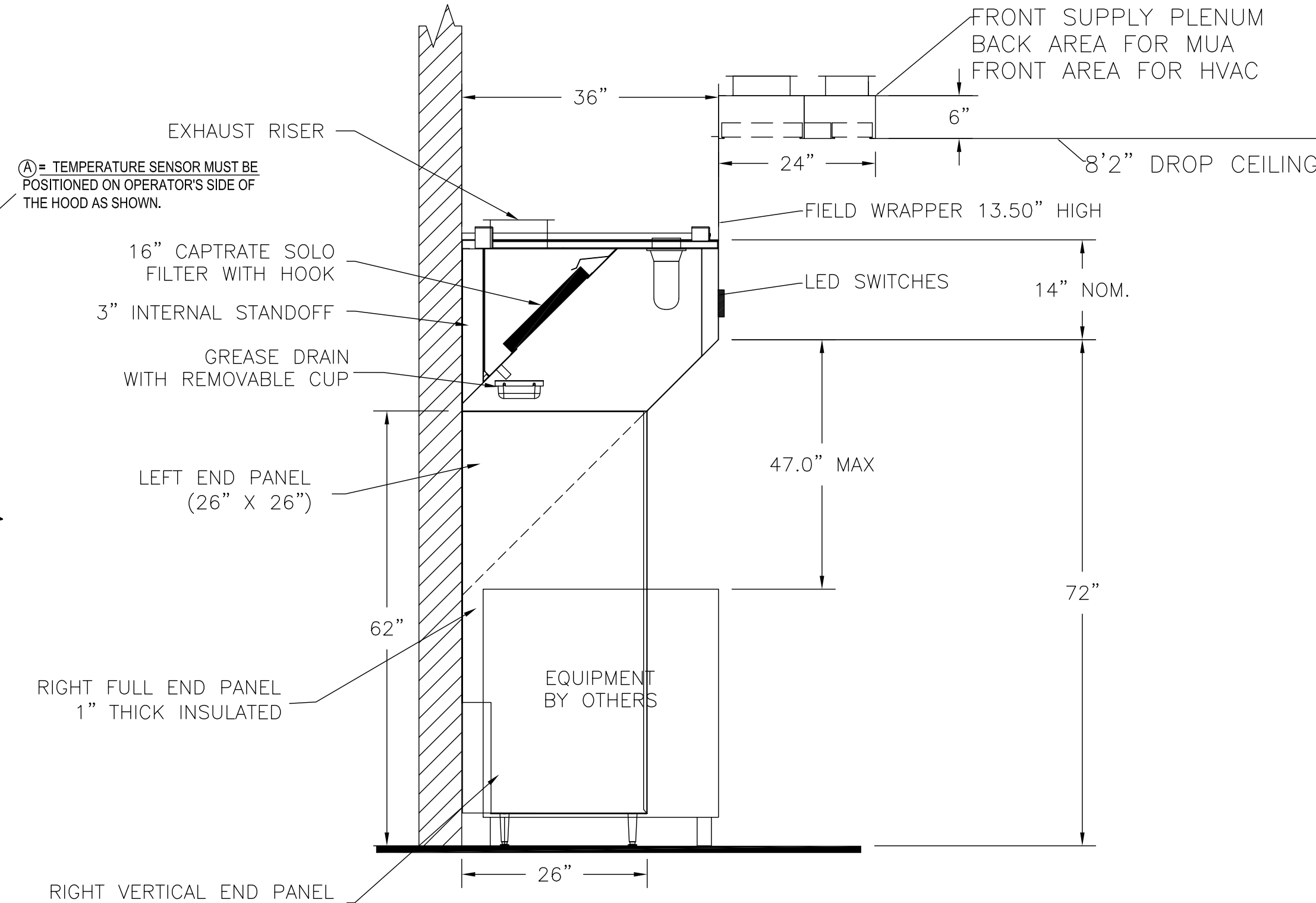
HOOD SYSTEM IS FABRICATED & DESIGNED PER UL-710 STANDARDS



SECTION VIEW - MODEL 3650BD-2
HOOD - #HD1-Grill



ELEVATIONS @ COOK LINE
3/4"=1'-0"
HOOD - (HD2-Oven)



SECTION VIEW - MODEL 3650BD-2
HOOD - (HD3-Fry)

FOR QUESTIONS, CALL THE CAPTIVE-AIRE (TRI-STATE) OFFICE
1329 E. KEMPER RD., SUITE 4210
PHONE: (513) 860-5555
joe.hertenstein@captiveaire.com

REVISIONS	
DESCRIPTION	DATE

CAPTIVE-AIRE
Air Solutions
1329 East Kemper Rd., Ste. 4210, Cincinnati, OH, 45246 PHONE: (513) 860-5555
www.captiveaire.com

Penn Station V2Bs (Left Hand Mixed)
various Locations

DATE: 7/16/20
DWG.#: 3789035
DRAWN BY: JMH120
SCALE: 3/4" = 1'-0"
MASTER DRAWING

SHEET NO.
H2

TILSLEY ARCHITECTS
1140 SAINT GREGORY ST. CINCINNATI, OH 45202
TEL 513.651.4300
WWW.TILSLEYARCHITECTS.COM

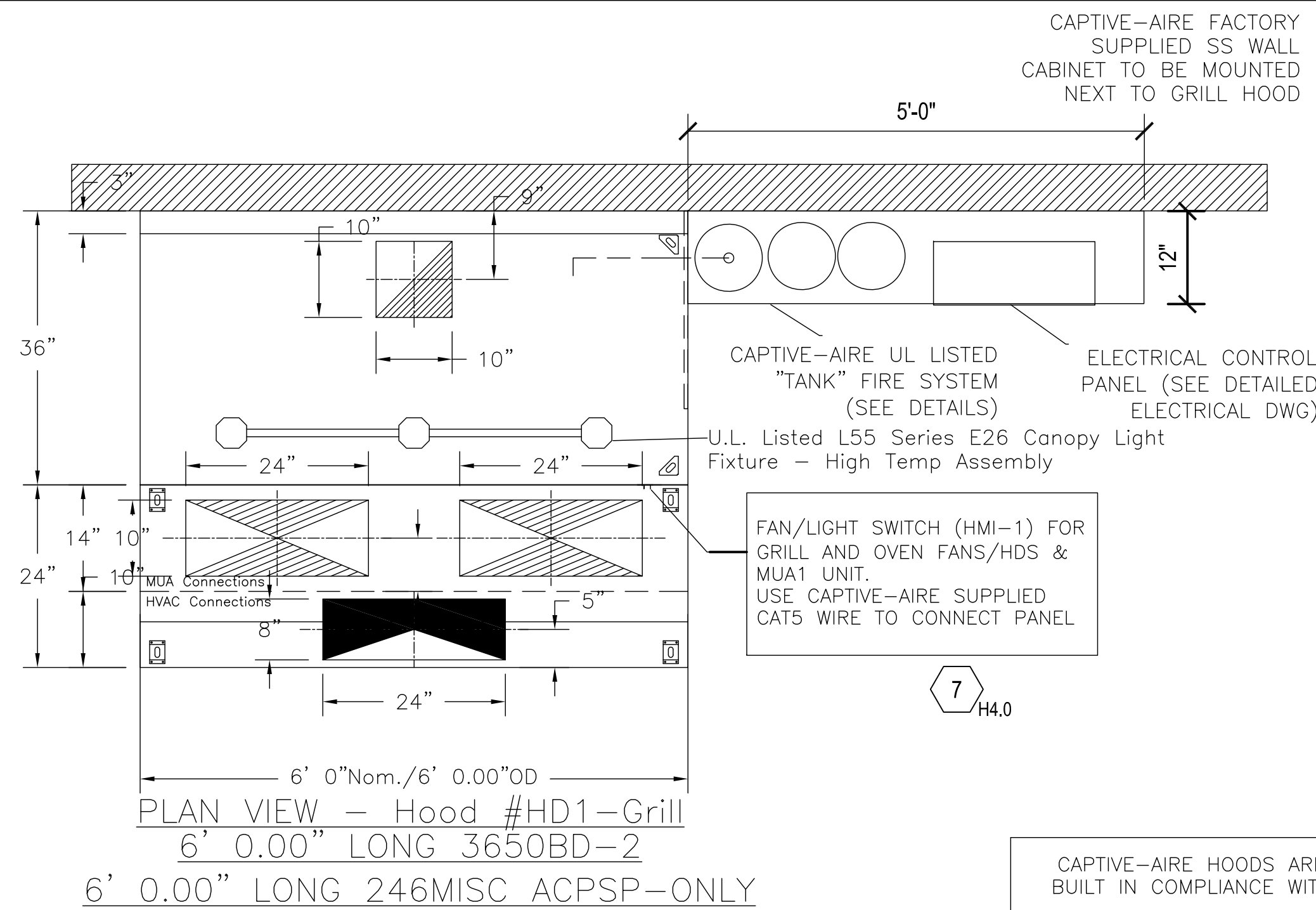
A New Penn Station Restaurant
Beacon Hill South Retail
565 East 109th Place - Suite C
Crown Point, IN 46307

SCOT ROGERS REGISTERED ARCHITECT
No. AR19400048
STATE OF INDIANA

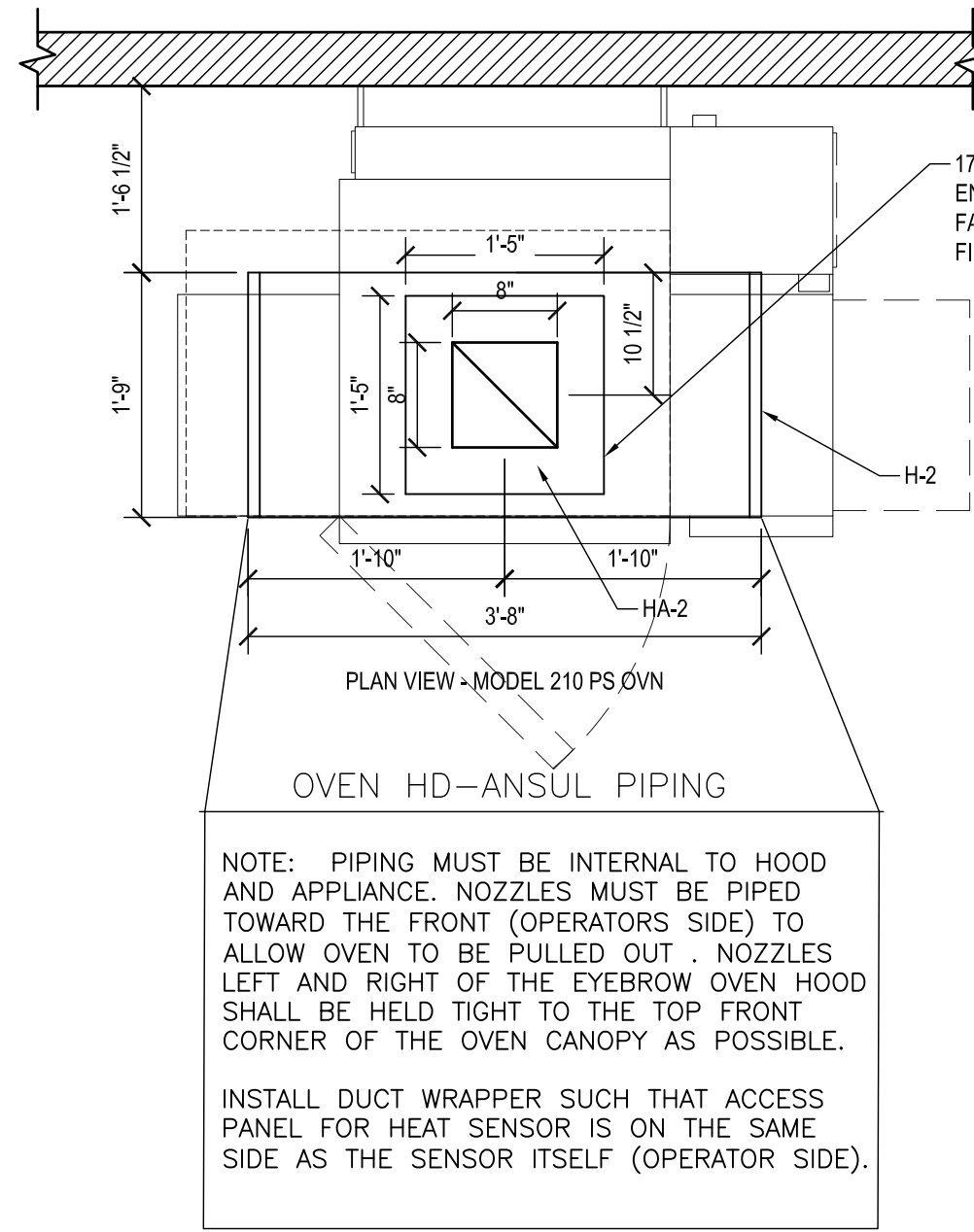
No.	ISSUE DESCRIPTION	DATE

Sheet Title: Captiveaire Shop
Drawings Issued For Permit Date: 4-2-2025
Scale: As Noted
Checked by: PS Crown Point IN 24006

H2.0

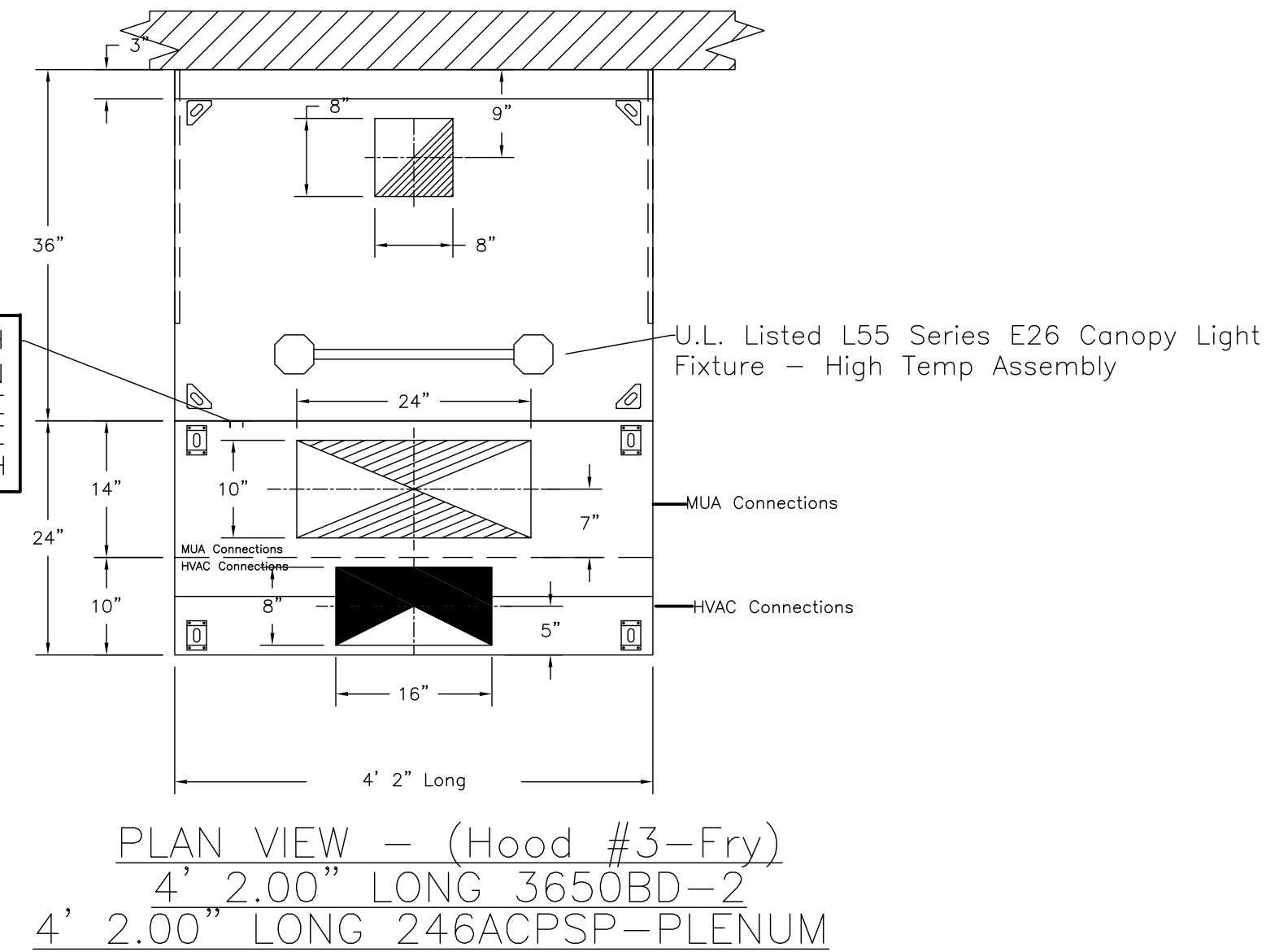


PLANS @ COOK LINE
3/4"=1'-0"
HOOD - (HD2-Oven)



FAN/LIGHT SWITCH (HMI-2) FRYER FAN USE CAPTIVE-AIRE SUPPLIED CAT5 WIRE TO GRIDDLE HD SWITCH

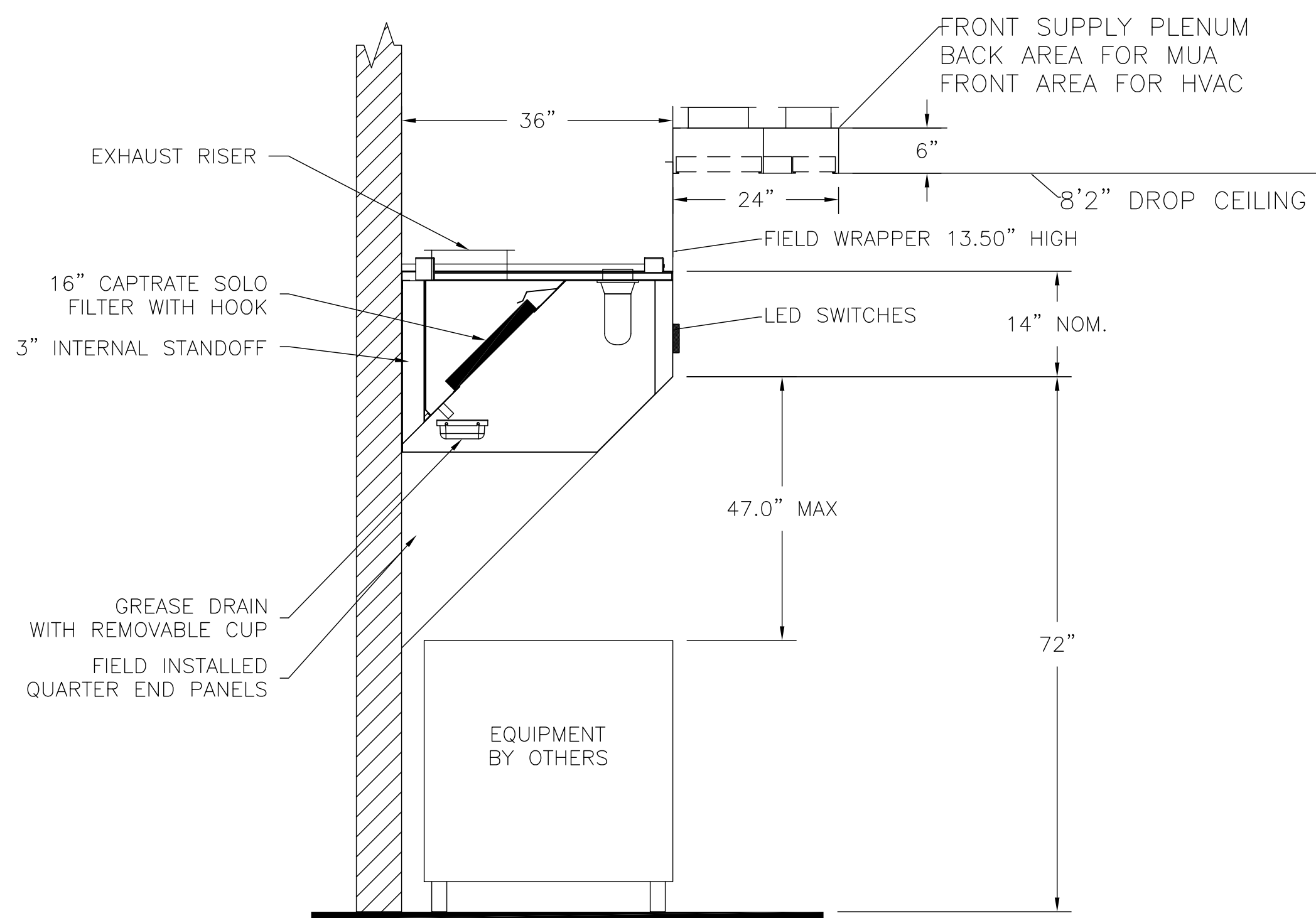
7 H4.0



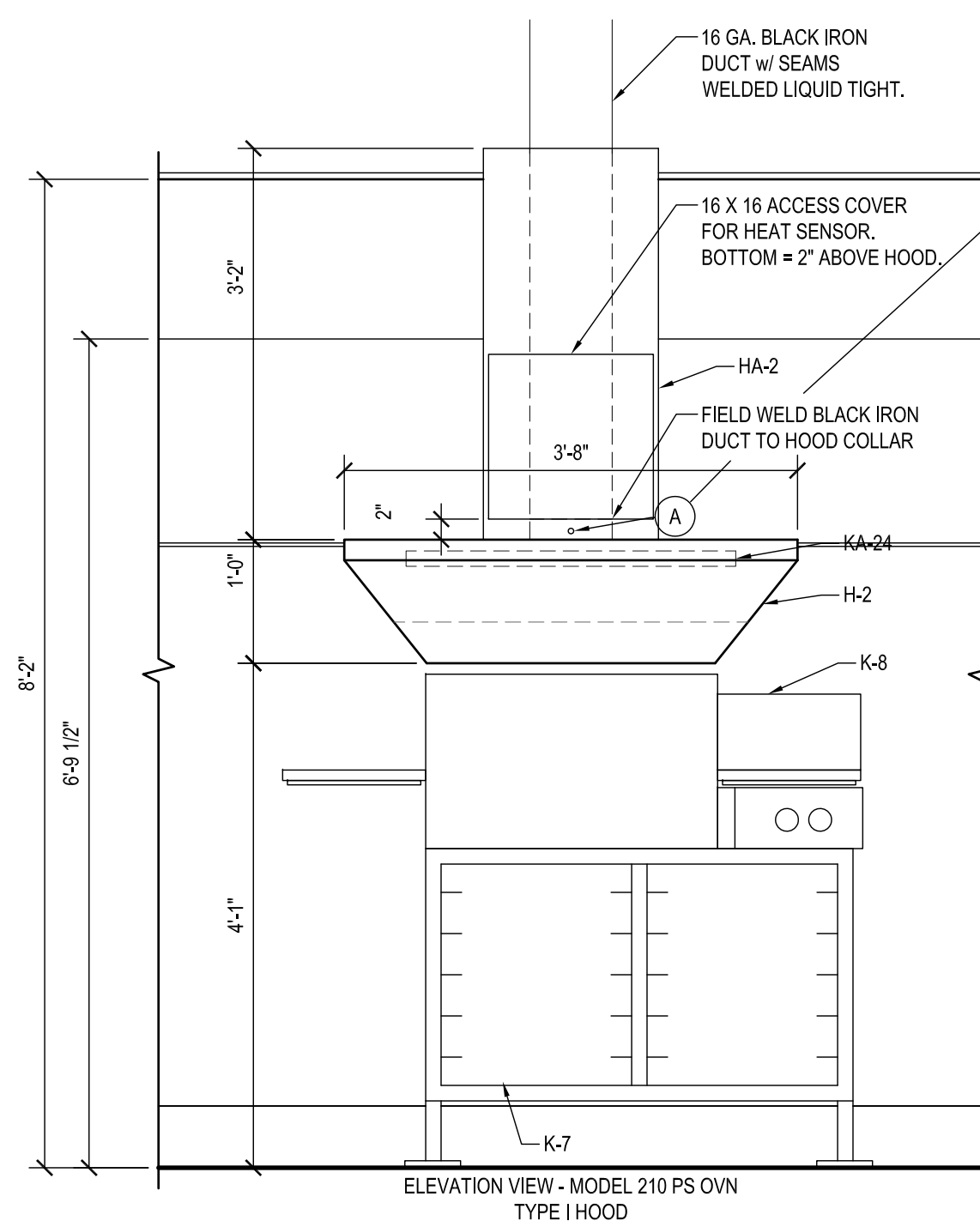
CAPTIVE-AIRE HOODS ARE BUILT IN COMPLIANCE WITH UL 710 AND NFPA 96 AND ARE RECOGNIZED BY ONE OR MORE OF THE FOLLOWING:

ETL SANITATION LISTED
ETL LISTED FILE# 3054804-001

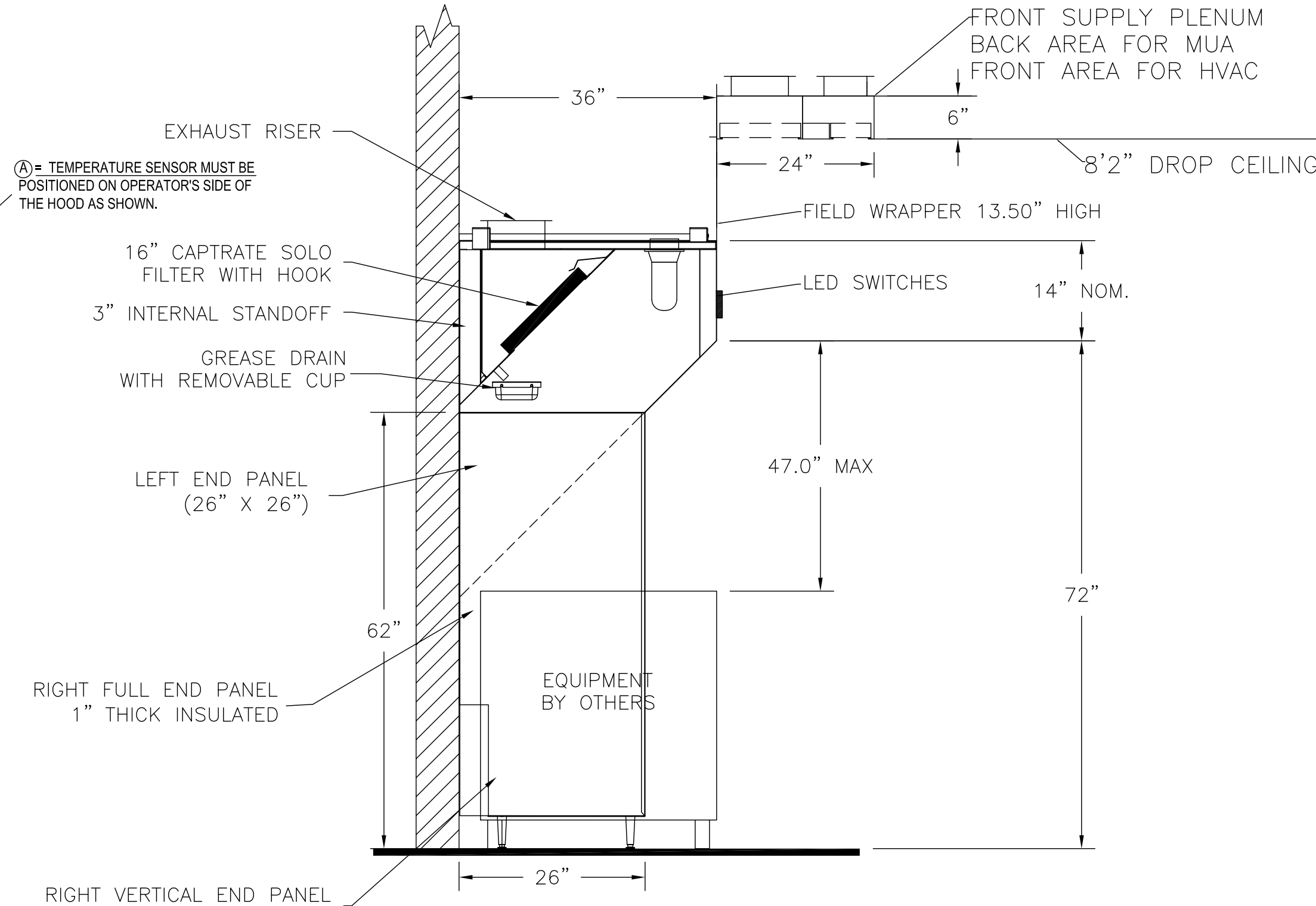
HOOD SYSTEM IS FABRICATED & DESIGNED PER UL-710 STANDARDS



SECTION VIEW - MODEL 3650BD-2
HOOD - #HD1-Grill



ELEVATIONS @ COOK LINE
3/4"=1'-0"
HOOD - (HD2-Oven)



SECTION VIEW - MODEL 3650BD-2
HOOD - (HD3-Fry)

FOR QUESTIONS, CALL THE CAPTIVE-AIRE (TRI-STATE) OFFICE
1329 E. KEMPER RD., SUITE 4210
PHONE: (513) 860-5555
joe.hertenstein@captiveaire.com

REVISIONS	
DESCRIPTION	DATE

CAPTIVE-AIRE
Air Solutions
1329 East Kemper Rd., Ste. 4210, Cincinnati, OH, 45246 PHONE: (513) 860-5555
www.captiveaire.com

Penn Station V2Bs (Left Hand Mixed)
various Locations

DATE: 7/16/20
DWG.#: 3789035
DRAWN BY: JMH120
SCALE: 3/4" = 1'-0"
MASTER DRAWING

SHEET NO.
H2

TILSLEY ARCHITECTS
1140 SAINT GREGORY ST. CINCINNATI, OH 45202
TEL 513.651.4300
WWW.TILSLEYARCHITECTS.COM

A New Penn Station Restaurant
Beacon Hill South Retail
565 East 109th Place - Suite C
Crown Point, IN 46307

SCOT ROGERS REGISTERED ARCHITECT
No. AR19400048
STATE OF INDIANA

No.	ISSUE DESCRIPTION	DATE

Sheet Title: **Captiveaire Shop**
Drawings Issued For Permit Date: **4-2-2025**
Scale: **As Noted**
Drawn By: **As Noted**

Created by: **As Noted**
Checked by: **As Noted**
24006 PS Crown Point IN

H2.0

EXHAUST FAN INFORMATION - Job#4137855

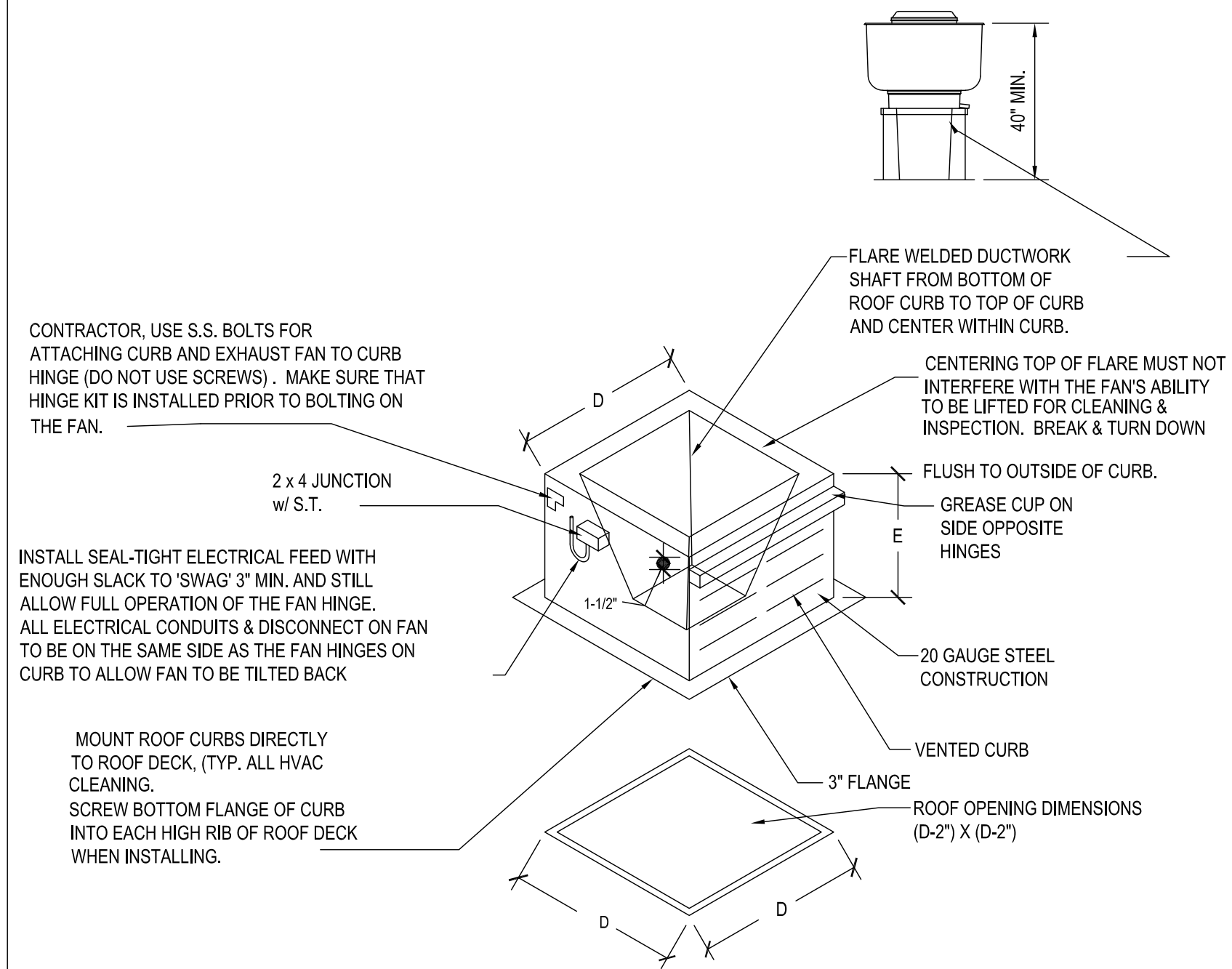
FAN UNIT NO.	TAG	FAN UNIT MODEL #	CFM	ESP.	RPM	H.P.	B.H.P.	Ø	VOLT	FLA	DISCHARGE VELOCITY	WEIGHT (LBS.)	SONES
1	KEF-1 (Grill)	DUB5HFA	1120	1.150	1215	0.750	0.3410	1	115	8.9	354 FPM	89	12.8
2	KEF2 (OVEN)	DU33HFA	600	0.600	1360	0.333	0.2030	1	115	4.3	396 FPM	70	14.1
3	KEF3 (FRY)	DUB5HFA	850	1.150	1144	0.750	0.3250	1	115	8.8	276 FPM	92	14.6

MUA FAN INFORMATION - Job#4137855

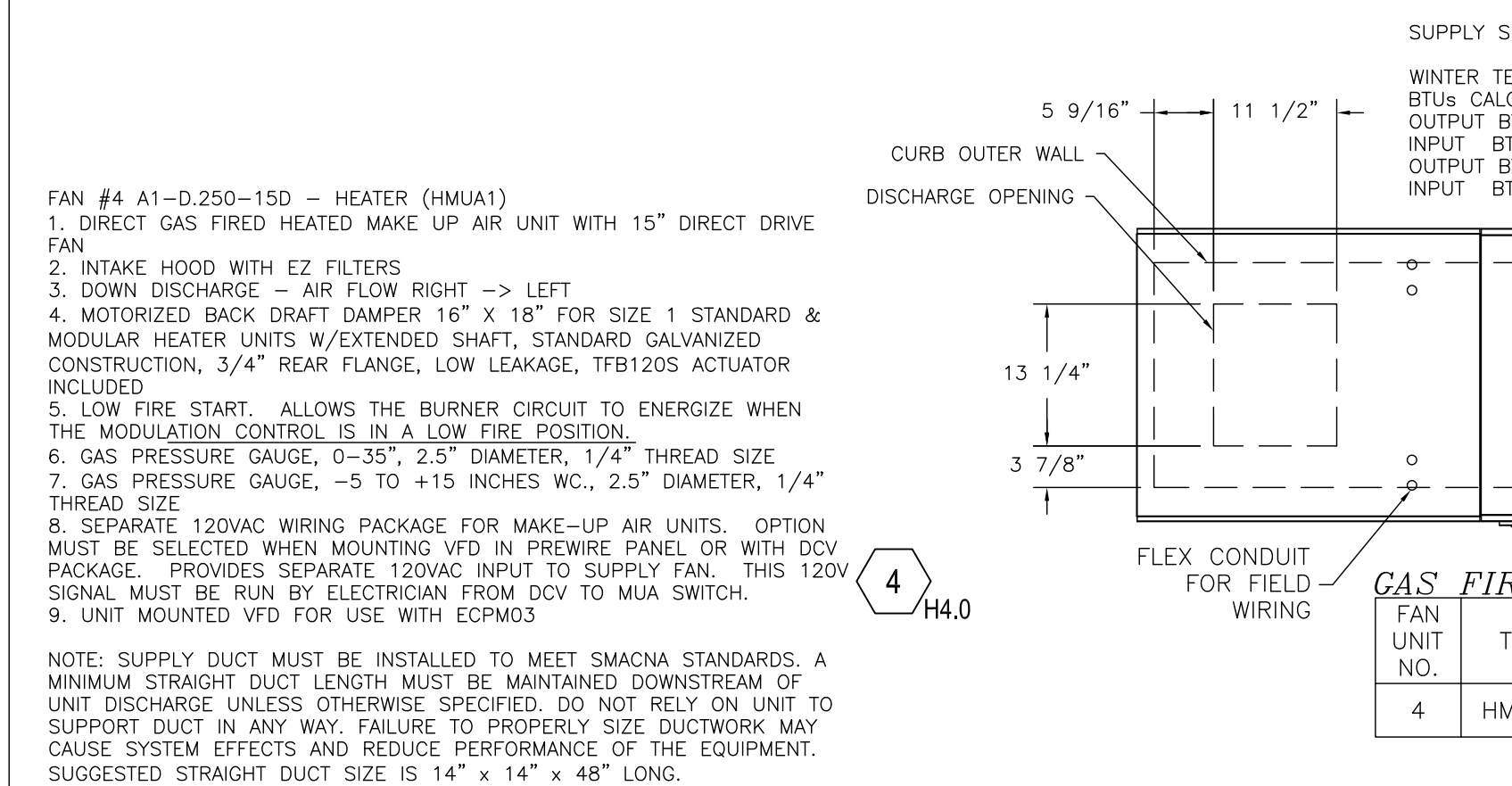
FAN UNIT NO.	TAG	FAN UNIT MODEL #	BLOWER	HOUSING	MIN CFM	DESIGN CFM	ESP.	RPM	H.P.	B.H.P.	Ø	VOLT	FLA	MCA	MOC	WEIGHT (LBS.)	SONES
4	HMUA1	A1-D.250-15D	5MF-1-MOD	A1-D.250	1000	1630	0.440	1855	1.500	0.9960	3	208	4.4		15A	648	15.6

CURB ASSEMBLIES

NO.	ON FAN	TAG	WEIGHT	ITEM	SIZE	LOCATION
1	# 1	KEF1 - GRIDDLE	44 LBS	Curb	23.000"W x 23.000"L x 30.000"H	Vented Hinged Grill Hood Curb
2	# 2	KEF2 - OVEN	38 LBS	Curb	19.500"W x 19.500"L x 30.000"H	Vented Hinged Oven Hood Curb
3	# 3	KEF3 - FRYER	44 LBS	Curb	23.000"W x 23.000"L x 30.000"H	Vented Hinged Fryer Hood Curb
4	# 4	HMUA1	63 LBS	Curb	21.000"W x 71.000"L x 16.000"H	Insulated Hood MUA Curb

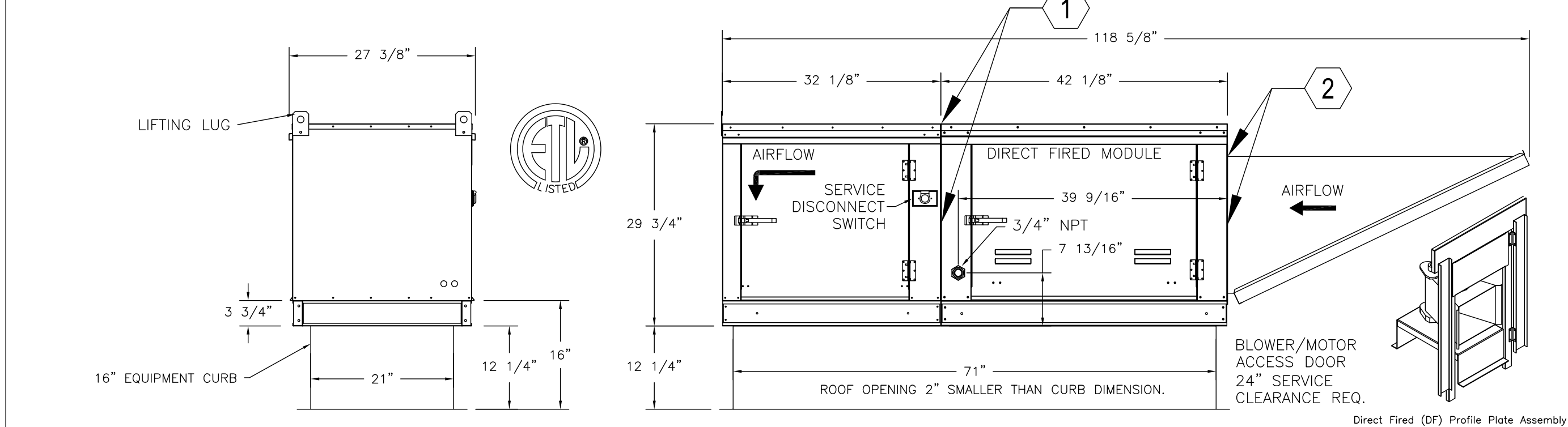


TYPICAL ROOF CURB DETAIL



GAS FIRED MAKE-UP AIR UNIT(S)

FAN UNIT NO.	TAG	INPUT BTUs	OUTPUT BTUs	TEMP. RISE	REQUIRED INPUT GAS PRESSURE	GAS TYPE	BURNER EFFICIENCY(%)
4	HMUA1	110372	101542	63 deg F	7 in. w.c. - 14 in. w.c.	Natural	92

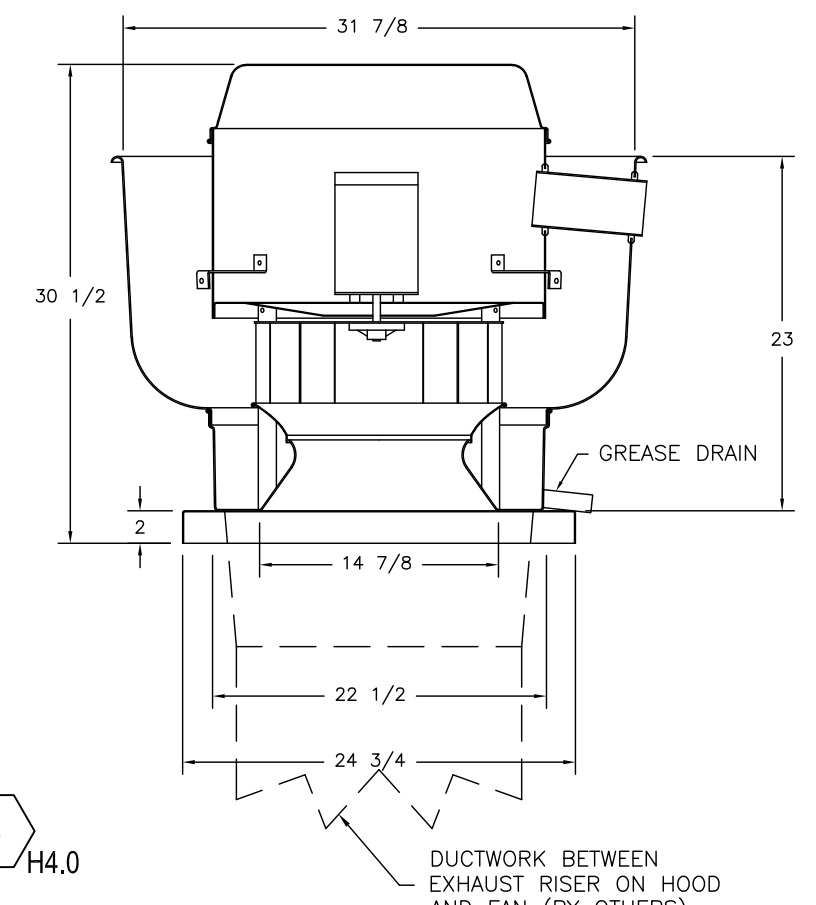


MUA NOTES:

- URETHANE CAULK HORIZ. & VERT. CONNECTIONS BETWEEN BLOWER ASSEMBLY & CONTROL MODULE.
- URETHANE CAULK HORIZ. & VERT. CONNECTIONS BETWEEN CONTROL MODULE & OUTSIDE AIR HOOD.

FOR QUESTIONS, CALL THE CAPTIVE-**AIRE** (TRI-STATE) OFFICE
 1329 E. KEMPER RD., SUITE 4210
 PHONE: (513) 860-5555
 joe.hertenstein@captiveaire.com

FAN #1 DUB5HFA - EXHAUST FAN (KEF1)



FEATURES:

- DIRECT DRIVE CONSTRUCTION (NO BELTS/PULLEYS)
- ROOF MOUNTED FANS
- RESTAURANT MODEL
- UL705 AND UL762 AND ULC-5645
- VARIABLE SPEED CONTROL
- INTERNAL WIRING
- WEATHERPROOF DISCONNECT
- THERMAL OVERLOAD PROTECTION (SINGLE PHASE)
- HIGH HEAT OPERATION 300°F (149°C)
- GREASE CLASSIFICATION TESTING

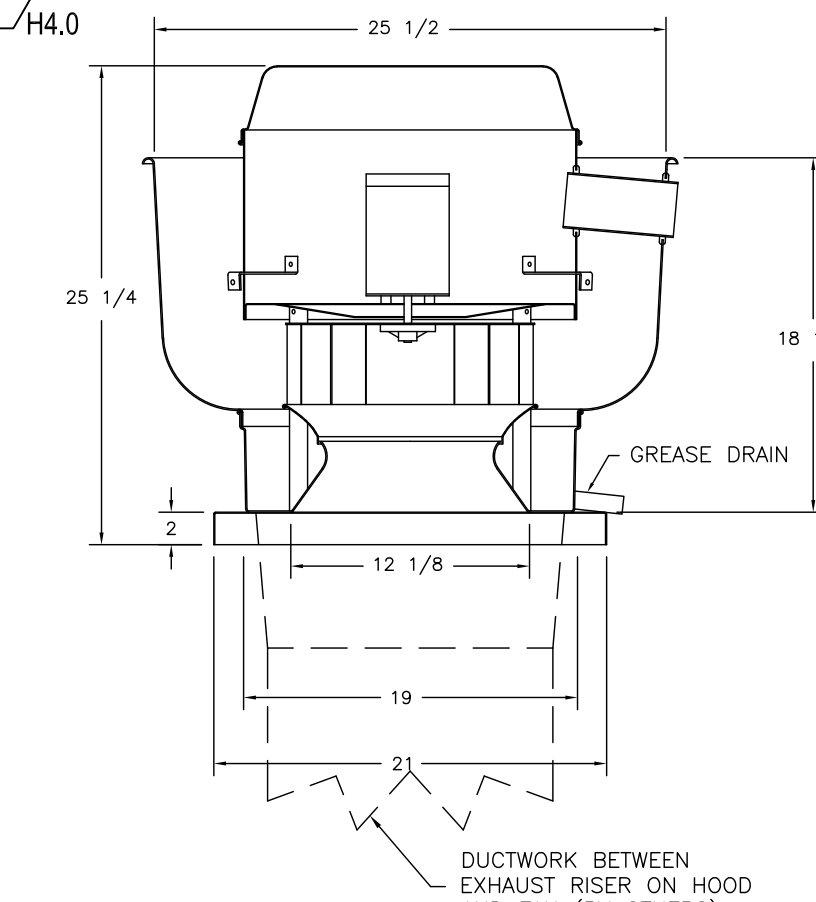
NORMAL TEMPERATURE TEST
 EXHAUST FAN MUST OPERATE CONTINUOUSLY WHILE EXHAUSTING AIR AT 300°F (149°C) UNTIL ALL FAN PARTS HAVE REACHED THERMAL EQUILIBRIUM, AND WITHOUT ANY DETRIMENTARY EFFECTS TO THE FAN WHICH WOULD CAUSE UNSAFE OPERATION.

ABNORMAL FLARE-UP TEST
 EXHAUST FAN MUST OPERATE CONTINUOUSLY WHILE EXHAUSTING BURNING GREASE VAPORS AT 600°F (316°C) FOR A PERIOD OF 15 MINUTES WITHOUT THE FAN BECOMING DAMAGED TO ANY EXTENT THAT COULD CAUSE AN UNSAFE CONDITION.

OPTIONS

- GREASE BOX.
- EXHAUST FAN HEAT BAFFLE.
- FAN BASE CERAMIC SEAL - INSTALLED AT PLANT - FOR GREASE DUCTS.
- ECM WIRING PACKAGE-EXHAUST - PWM SIGNAL FROM ECPM03 PREWIRE (NIDEC MOTOR).

FAN #2 DU33HFA - EXHAUST FAN (KEF2)



FEATURES:

- DIRECT DRIVE CONSTRUCTION (NO BELTS/PULLEYS)
- ROOF MOUNTED FANS
- RESTAURANT MODEL
- UL705 AND UL762 AND ULC-5645
- VARIABLE SPEED CONTROL
- INTERNAL WIRING
- WEATHERPROOF DISCONNECT
- THERMAL OVERLOAD PROTECTION (SINGLE PHASE)
- HIGH HEAT OPERATION 300°F (149°C)
- GREASE CLASSIFICATION TESTING

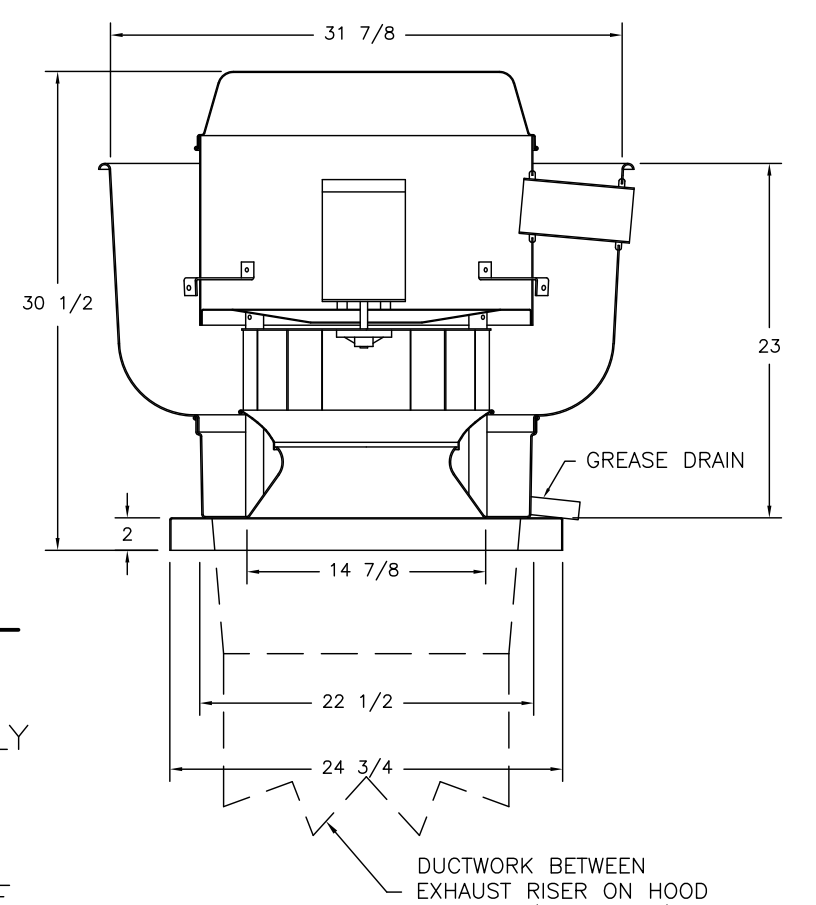
NORMAL TEMPERATURE TEST
 EXHAUST FAN MUST OPERATE CONTINUOUSLY WHILE EXHAUSTING AIR AT 300°F (149°C) UNTIL ALL FAN PARTS HAVE REACHED THERMAL EQUILIBRIUM, AND WITHOUT ANY DETRIMENTARY EFFECTS TO THE FAN WHICH WOULD CAUSE UNSAFE OPERATION.

ABNORMAL FLARE-UP TEST
 EXHAUST FAN MUST OPERATE CONTINUOUSLY WHILE EXHAUSTING BURNING GREASE VAPORS AT 600°F (316°C) FOR A PERIOD OF 15 MINUTES WITHOUT THE FAN BECOMING DAMAGED TO ANY EXTENT THAT COULD CAUSE AN UNSAFE CONDITION.

OPTIONS

- GREASE BOX.
- EXHAUST FAN HEAT BAFFLE.
- FAN BASE CERAMIC SEAL - INSTALLED AT PLANT - FOR GREASE DUCTS.
- ECM WIRING PACKAGE-EXHAUST - PWM SIGNAL FROM ECPM03 PREWIRE (NIDEC MOTOR).

FAN #1 DUB5HFA - EXHAUST FAN (KEF1)



FEATURES:

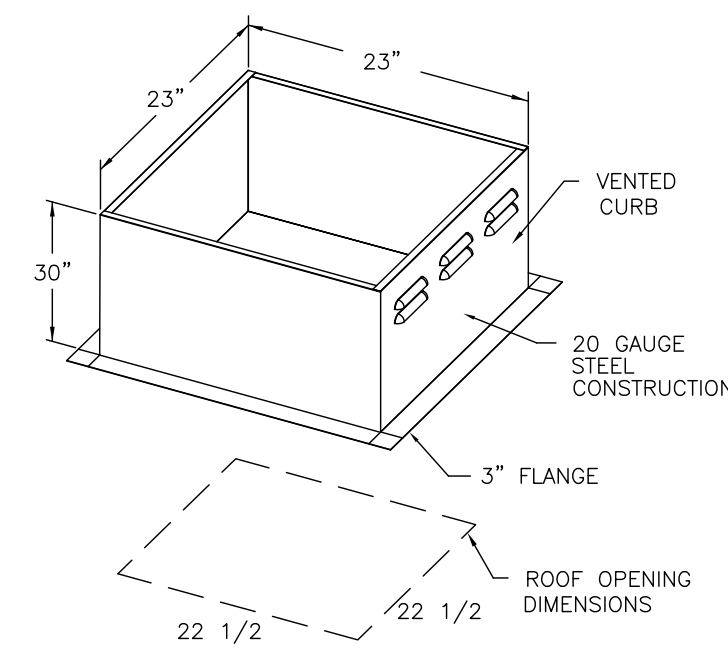
- DIRECT DRIVE CONSTRUCTION (NO BELTS/PULLEYS)
- ROOF MOUNTED FANS
- RESTAURANT MODEL
- UL705 AND UL762 AND ULC-5645
- VARIABLE SPEED CONTROL
- INTERNAL WIRING
- WEATHERPROOF DISCONNECT
- THERMAL OVERLOAD PROTECTION (SINGLE PHASE)
- HIGH HEAT OPERATION 300°F (149°C)
- GREASE CLASSIFICATION TESTING

NORMAL TEMPERATURE TEST
 EXHAUST FAN MUST OPERATE CONTINUOUSLY WHILE EXHAUSTING AIR AT 300°F (149°C) UNTIL ALL FAN PARTS HAVE REACHED THERMAL EQUILIBRIUM, AND WITHOUT ANY DETRIMENTARY EFFECTS TO THE FAN WHICH WOULD CAUSE UNSAFE OPERATION.

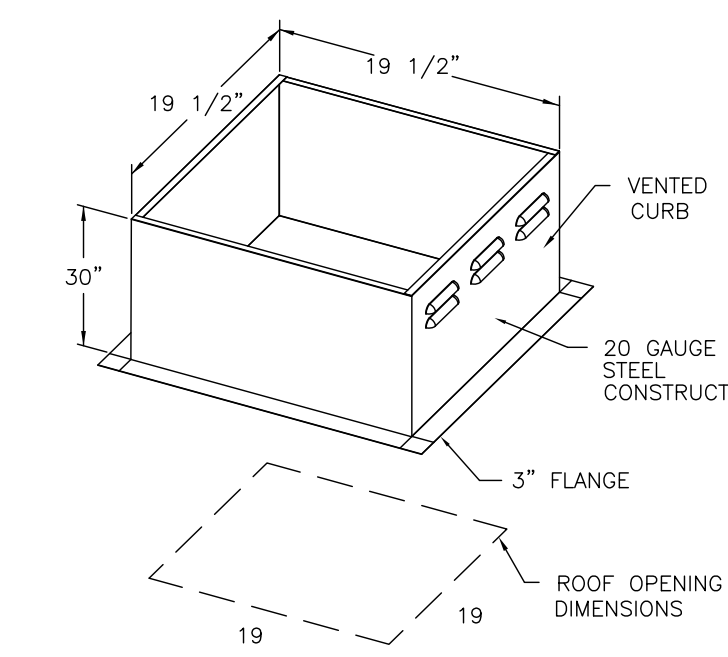
ABNORMAL FLARE-UP TEST
 EXHAUST FAN MUST OPERATE CONTINUOUSLY WHILE EXHAUSTING BURNING GREASE VAPORS AT 600°F (316°C) FOR A PERIOD OF 15 MINUTES WITHOUT THE FAN BECOMING DAMAGED TO ANY EXTENT THAT COULD CAUSE AN UNSAFE CONDITION.

OPTIONS

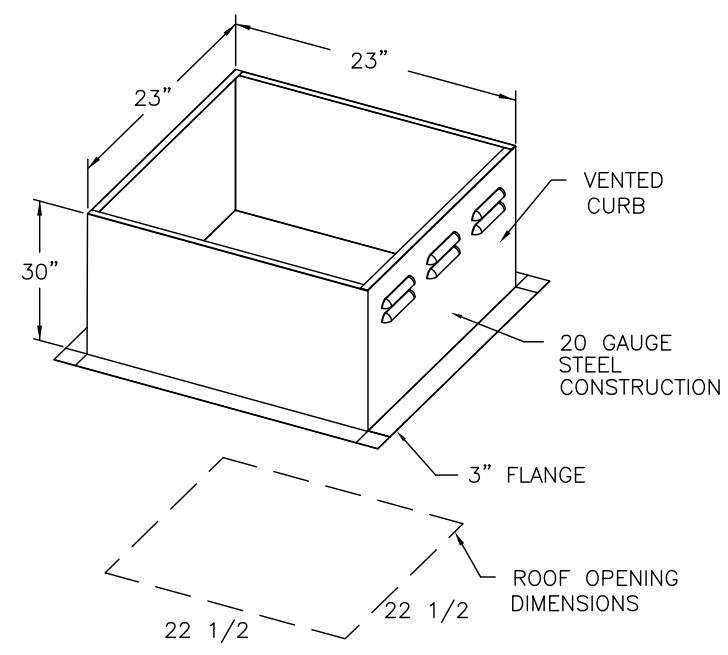
- GREASE BOX.
- EXHAUST FAN HEAT BAFFLE.
- FAN BASE CERAMIC SEAL - INSTALLED AT PLANT - FOR GREASE DUCTS.
- ECM WIRING PACKAGE-EXHAUST - PWM SIGNAL FROM ECPM03 PREWIRE (NIDEC MOTOR).



PITCHED CURBS ARE AVAILABLE FOR PITCHED ROOFS.
 SPECIFY PITCH:
 EXAMPLE: 7/12 PITCH = 30° SLOPE



PITCHED CURBS ARE AVAILABLE FOR PITCHED ROOFS.
 SPECIFY PITCH:
 EXAMPLE: 7/12 PITCH = 30° SLOPE



PITCHED CURBS ARE AVAILABLE FOR PITCHED ROOFS.
 SPECIFY PITCH:
 EXAMPLE: 7/12 PITCH = 30° SLOPE

REVISIONS

NO.	DESCRIPTION	DATE

CAPTIVE-AIRE****

Various Locations

DATE: 7/16/20
DWG.#: 3789035
DRAWN BY: JMH120
SCALE: 3/4" = 1'-0"
MASTER DRAWING

SHEET NO.
 H3

T

TILSLEY ARCHITECTS
 1140 SAINT GREGORY ST., CINCINNATI, OH 45202
 TEL 513.651.4300
 WWW.TILSLEYARCHITECTS.COM

A New Penn Station Restaurant
Beacon Hill South Retail
 565 East 109th Place - Suite C
 Crown Point, IN 46307

SCOT ROGERS REGISTERED ARCHITECT
 No. AR19400048
 STATE OF INDIANA

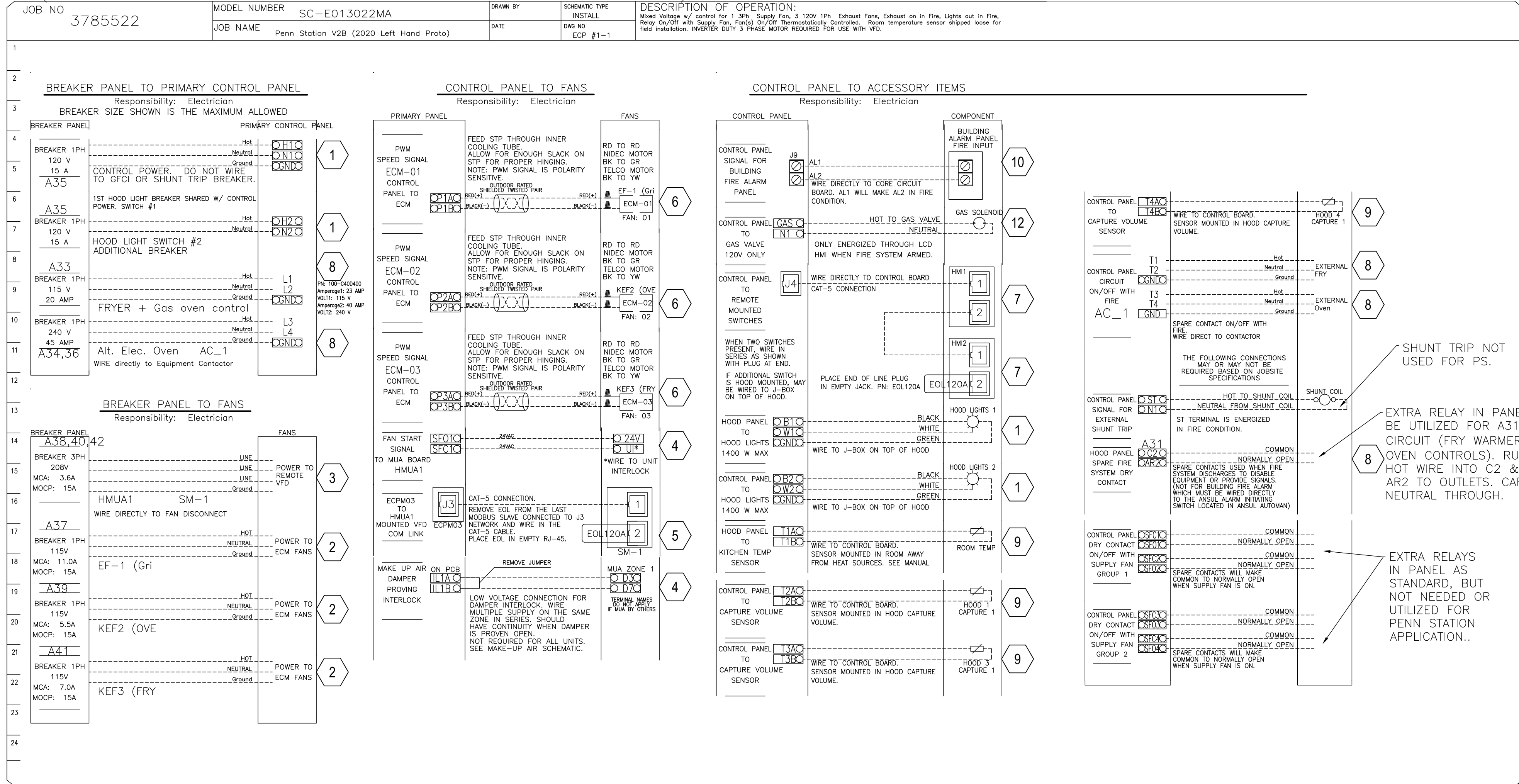
NO.	ISSUE DESCRIPTION	DATE

Sheet Title: **Captiveaire Shop**
 Drawings Issued For Permit Date: **4-2-2025**
 Scale: **As Noted**
 Drawn By: **As Noted**

ELECTRICAL PACKAGE – JOB#5849882

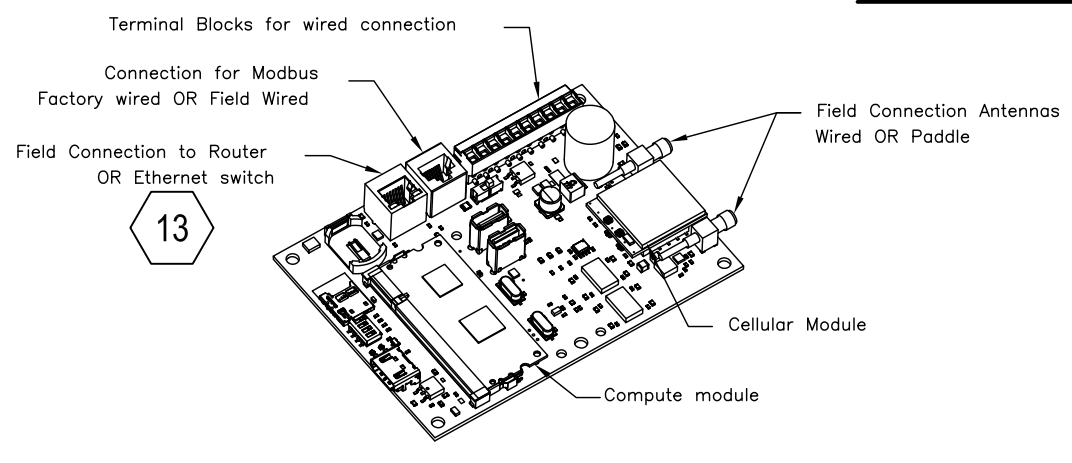
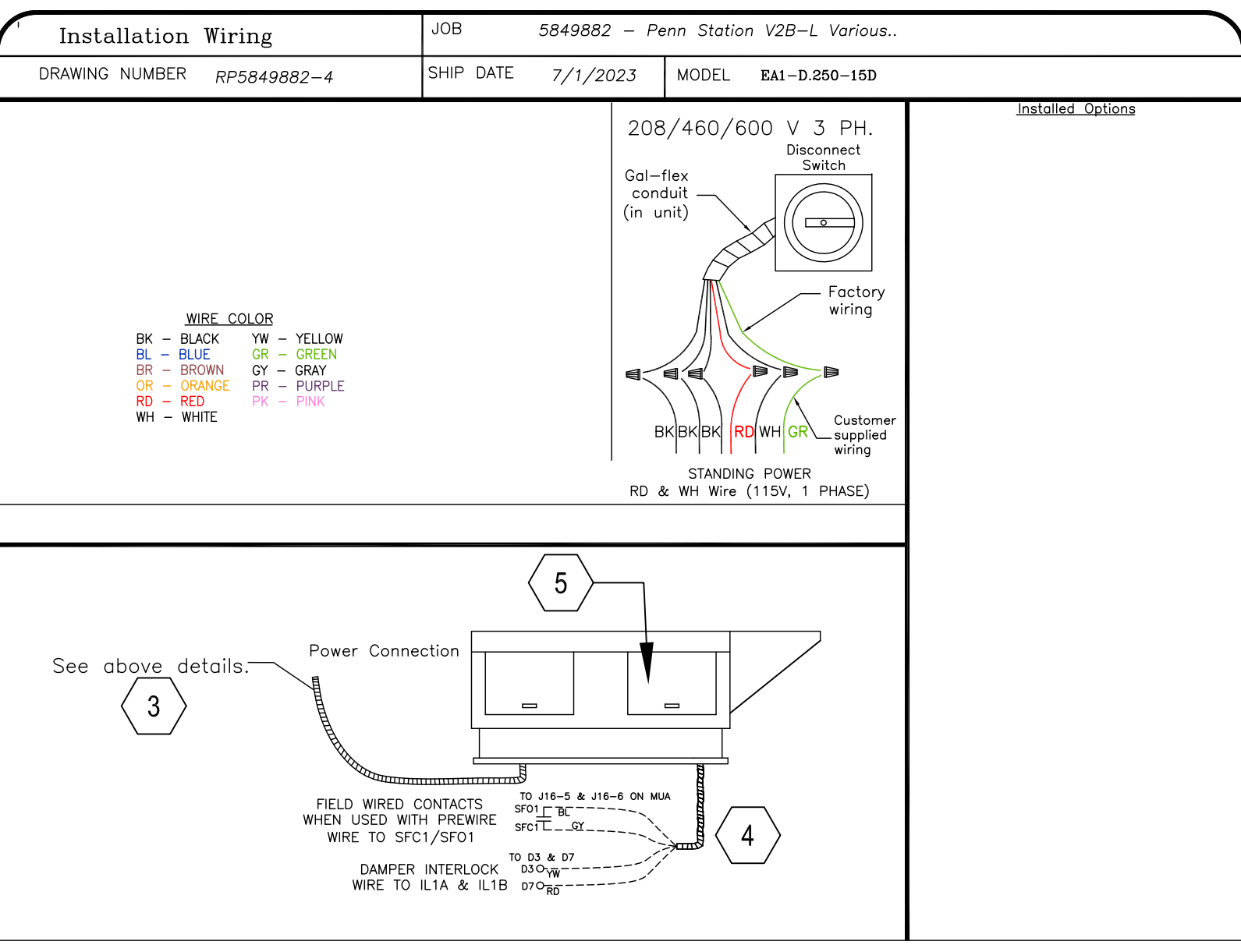
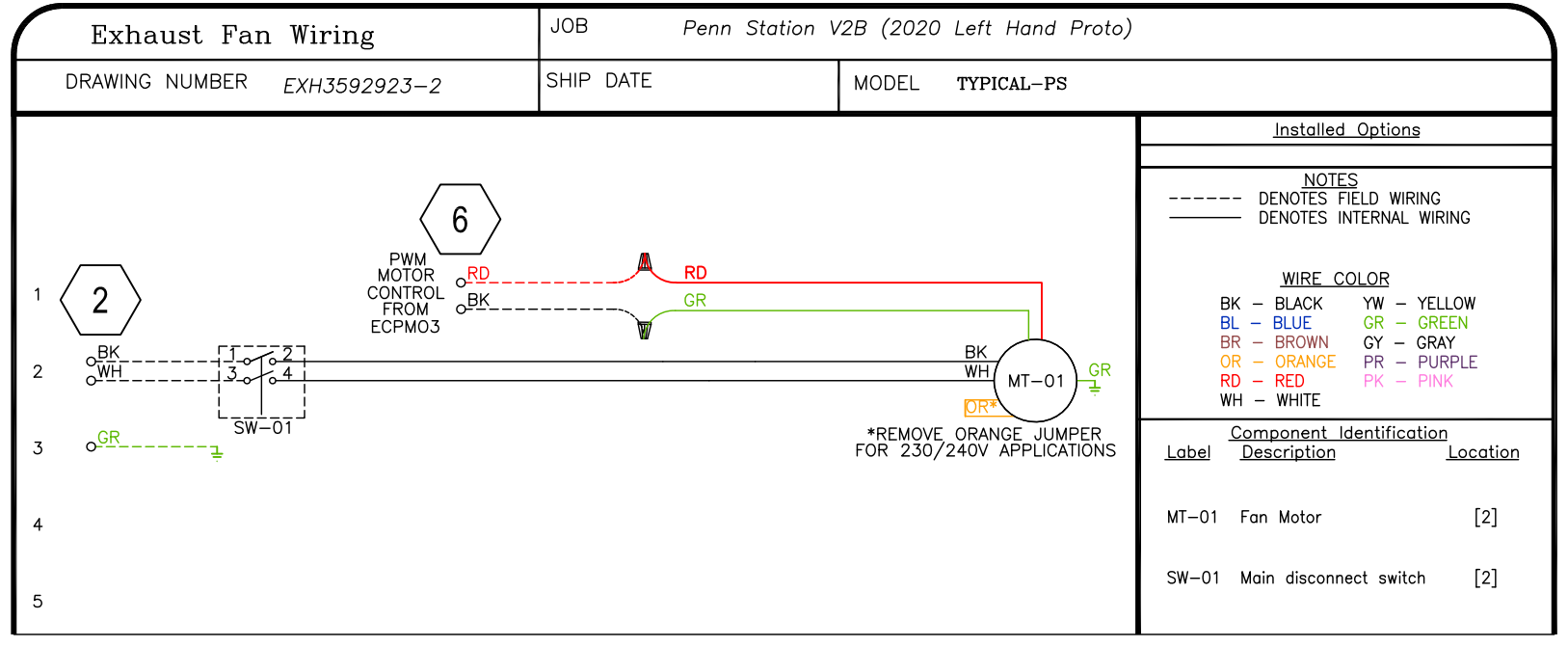
NO	TAG	PACKAGE #	LOCATION	SWITCHES		OPTION	FANS CONTROLLED					
				LOCATION	QUANTITY		FAN TAG	TYPE	φ	HP	VOLT	FLA
1	ECP1	SC-E013022MA	WALL UTILITY CABINET RIGHT	FACE MOUNT RIGHT SIDE OF HOOD	2 LIGHT	SMART CONTROLS THERMOSTATIC CONTROL W/ RELAY ON/OFF WITH SUPPLY	KEF1	EXHAUST	1	0.750	115	8.9
				HOOD # 1	2 FAN		KEF2-OVEN	EXHAUST	1	0.333	115	4.3
							KEF3-FRY	EXHAUST	1	0.750	115	8.9
							HMUA1	SUPPLY	3	1.500	208	4.4

(HOOD CONTROL PANEL—MOUNTED NEXT TO GRIDDLE HOOD)



HOOD SYSTEM WIRING INSTRUCTIONS BY ELECTRICIAN

- 1) WIRE 120V, 1 PHASE CIRCUIT FROM BUILDING PANEL TO HOOD CONTROL PANEL TO BE USED FOR CONTROLS & LIGHT CIRCUIT.
- 2) WIRE 120V, 1 PHASE CIRCUITS FROM BUILDING PANEL TO EACH EXHAUST FAN (SEPARATELY) TO CAPTIVE-AIRE SUPPLIED FAN EXTERNAL DISCONNECTS (TYPICAL OF ALL EXHAUST FANS).
- 3) WIRE 208V, 3 PHASE CIRCUIT FROM BUILDING PANEL TO MAKE UP AIR FAN ON ROOF & TIE INTO WHIP OFF DISCONNECT SWITCH WITH GROUND.
- 4) RUN A 18-4 LOW VOLTAGE WIRE FOR 24V CIRCUIT FROM SFO1 & SFC1 OF CONTROL PANEL TO THE MAKE UP AIR FOR HEATER CONTROLS J16 PINS 5&6. ALSO INSTALL LOW VOLTAGE FROM D3/D7 OF HEATER TO IL1A & IL1B OF CONTROL PANEL.
- 5) USING THE CAT5 CABLE SUPPLIED BY CAPTIVE-AIRE, WIRE FROM J3 PLUG AT CONTROL PANEL TO LEFT SIDE OF VFD IN MAKE UP AIR UNIT.
- 6) THERE IS A RED & BLACK PAIR OF TWISTED WEATHERPROOF WIRE ALREADY FACTORY CONNECTED TO EACH MOTOR OF EACH EXHAUST FAN LOCATED UNDER THE FAN HOUSING LID. RUN EACH WIRE THROUGH MOTOR BREATHER TUBE & THEN DOWN TO HOOD CONTROL PANEL NEXT TO GRILL HOOD. TIE EACH ONE INTO P#A & P#B RESPECTIVELY FOR EACH FAN AS SHOWN ON SCHEMATIC TO THE LEFT.
- 7) WIRE THE CAT5 CABLE SUPPLIED BY CAPTIVE AIRE FROM J4 PLUG TO THE JUNCTION BOX LOCATED ON TOP OF THE GRILL HOOD & PLUG IN FOR GRILL HD SWITCH (HMI). THEN WIRE THE OTHER CAT5 CABLE FROM THE GRILL HOOD JUNCTION BOX TO THE FRY HOOD JUNCTION BOX ON TOP OF HOOD & PLUG INTO J PLUG FOR THE FRY HOOD SWITCH (HMI). YOU ARE WIRING THE SWITCHES (HMI PANELS) IN SERIES. SEE H1.0, H2.0
- 8) WIRE THE 120V 1 PHASE FRYER(S)/WARMER CIRCUITS & THE 240V 1 PHASE ALT. ELEC. OVEN CIRCUIT FROM BUILDING PANEL TO HOOD CONTROL PANEL TO THE RESPECTIVE 120V & 240V CONTACTORS & THEN FROM HOOD CONTROL PANEL TO THE RESPECTIVE WALL OUTLETS.
- 9) USING THE WHITE WIRE SUPPLIED BY CAPTIVE-AIRE WIRE FROM EACH HOOD DUCT SENSOR LOCATED IN HOOD EXHAUST COLLAR OR TOP OF HOOD IN JUNCTION BOX TO HOOD CONTROL PANEL & TIE INTO T2A & T2B, T3A & T3B, T4A & T4B. THEN INSTALL WHITE TEMP SENSOR SUPPLIED BY CAPTIVE AIRE ON RIGHT SIDE OF HOOD SS PANEL & WIRE TO T1A & T2B.
- 10) IF BUILDING ALARM IS PROVIDED WITH BUILDING THEN WIRE DIRECTLY INTO AL1 & AL2 OF THE CONTROL PANEL PER THE BUILDING FIRE PANEL REQUIREMENTS TO RECEIVE AN ALARM SIGNAL UPON FIRE SYSTEM ACTUATION. IF NO BUILDING ALARM, THEN SUPPLY A HORN/LIGHT STROBE & MOUNT IN SIGHT OF HOODS AND TIE DIRECTLY INTO TR2 & C2 OF CONTROL PANEL.
- 11) INSTALL LIGHT BULBS IN HOODS SUPPLIED BY OWNER. VERIFY ALL FANS & LIGHTS POWER UP. CHECK ROTATION FOR SUPPLY FAN. ANY QUESTIONS CONTACT JOE AT 513-860-5555. 5 BULBS REQ'D – SUPPLIED IN GENERAL LIGHTING PACKAGE.
- 12) WIRE POWER FROM G & N1 FROM CONTROL PANEL TO GAS SUPPLIED ELECTRIC GAS VALVE FOR GAS SHUT OFF. MAKE SURE ELECTRIC GAS VALVE IS INSTALLED HORIZONTALLY TO WORK PROPERLY.
- 13) PLUG A CAT5 WIRE INTO COMMUNICATION MODULE TO ROUTER IS RECOMMENDED TO MONITOR THE FIRE SYSTEM 24/7.



FOR QUESTIONS, CALL THE CAPTIVE-AIRE (TRI-STATE) OFFICE
 1329 E. KEMPER RD. SUITE 4210
 PHONE: (513) 860-5555
 joe.hertenstein@captiveaire.com

REVISIONS

NO.	DESCRIPTION	DATE

CAPTIVE-AIRE
 Air Solutions
 1329 East Kemper Rd., Ste. 4210, Cincinnati, OH 45246 PHONE: (513) 860-5555

DATE: 7/16/20
DWG.#: 3789035
DRAWN BY: JMH120
SCALE: 3/4" = 1'-0"
MASTER DRAWING

SHEET NO. H4

TILSLEY ARCHITECTS
 1140 SAINT GREGORY ST. CINCINNATI, OH 45202
 TEL 513.651.4300
 WWW.TILSLEYARCHITECTS.COM

A New Penn Station Restaurant
Beacon Hill South Retail
 565 East 109th Place - Suite C
 Crown Point, IN 46307

SCOT ROGERS REGISTERED ARCHITECT
 No. AR19400048
 STATE OF INDIANA

Captiveaire Shop
 Drawings
 Issued For Permit Date
 4-2-2025
 Scale Drawn By
 As Noted

Sheet Title: Captiveaire Shop
 24006 PS Crown Point IN