

Report By:

**National TAB
1329 E. KEMPER ROAD
SUITE 4210
CINCINNATI, OH 45246**



**Report: TAB REPORT
Function: Test, Adjust, & Balance
Date: 07/03/2024**

**PROJECT
07-01-24 PIZZA HUT CEDAR FALLS, IA**

6179 University Ave STE 3

Cedar Falls, IA 50613

Client

Flynn Restaurant Group
6200 Oak Tree Boulevard
Suite 250
Independence, OH 44131

National TAB

Project: 07-01-24 PIZZA HUT CEDAR FALLS, IA

Table Of Contents

Section	Page #
Summary	3
Issue Data	4
QR Code	11
Balance Schedule	12
Checklist Data	13
AHU/RTU	30
FAN - Exhaust	33
FAN - Supply	36
Kitchen Hood Type I	37

Summary and Recommendations

The purpose of the visit to the Pizza Hut in Cedar Falls, IA was to address complaints of condensation on the ceiling.

The issue appears to be due to a couple reasons:

1. FCU-1 coil is frozen appears that FCU-2 may be partially frozen as well. There is water leaking from the frozen copper lines as well as the coil are dripping onto the ceiling. Appears the coils are freezing primarily due to low airflow. The FCU's are set to the highest fan speed and speed cannot be increased. The airflow is low on FCU-2 due to dirty filters. When the filters were removed, the airflow substantially increased. FCU-1 filters were clean but just had been changed the day before.
2. With reduced airflow, the discharge air on the FCU's is lowered which can cause condensation to form on the diffusers and surrounding surfaces.
3. The building pressure is highly negative due to several issues which allows hot, humid unconditioned outside air to enter the building. This hot, humid unconditioned air can cause condensation on surfaces due to the increased dew point.

Next steps:

1. FCU's 1 and 2 evaporator coils should be thawed and then cleaned.
2. FCU's 2 filters need to be changed ASAP. Filters for both units need to be changed on a quarterly basis.
3. MUA airflow is low due to a couple issues:
 - a. MUA intake air filter is very dirty and needs to be cleaned.
 - b. The MUA PSP at the hood appears to be clogged due to the high discharge static pressure on the MUA. The PSP needs to be physically dropped down and then the top of the PSP cleaned off.

The following pages include an issue list with more details about these items as well additional items to further improve the performance of the space.

Issue List

- FCU-1/FCU-2 leakage
- FCU-2 filters are dirty
- MUA intake filter is dirty
- MUA PSP Plenum is clogged
- RTU-1 economizer not functional
- RTU-1 Final Filters



07-01-24 PIZZA HUT CEDAR FALLS, IA

Project Issue Information

Issue Name : FCU-1/FCU-2 leakage
Description : FCU-1/FCU-2 show signs of leakage from coils. FCU-1 coils are completely blocked with ice, Lines going into coils are frozen/dripping water from line and coil compartment. Recommend thawing and cleaning coils to prevent buildup. FCU-2 shows signs of leakage from line going into coils. No signs of leakage from coil compartment panel.
Created By : National TAB **Assigned To :** National TAB - Dylan Crisman
Status : Open
Priority : Urgent **Asset Tag :** FCU1
Originated Date : 07/02/2024 - Dylan Crisman - National TAB

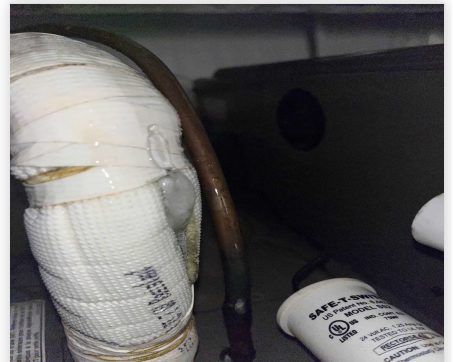
Project Issue File Details



IMG_4652
07/02/2024



IMG_4675
07/02/2024



IMG_4654
07/02/2024



07-01-24 PIZZA HUT CEDAR FALLS, IA

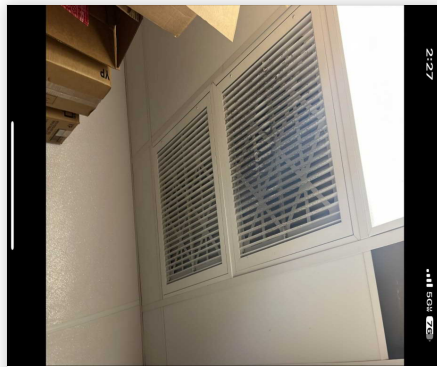
Project Issue Information

Issue Name : FCU-2 filters are dirty
Description : FCU-2 filters behind wall to left of checkout counter inside return vents are dirty. Recommend replacing. With filters temporarily removed, airflow increased from 1100 CFM to 1700 CFM. Airflow increased to 1345CFM from 837CFM when tested with filters removed.
Created By : National TAB **Assigned To :** National TAB - Dylan Crisman
Status : Open
Priority : Urgent **Asset Tag :** FCU2
Originated Date : 07/02/2024 - Dylan Crisman - National TAB

Project Issue File Details



IMG_4676
07/02/2024



IMG_4678
07/02/2024



07-01-24 PIZZA HUT CEDAR FALLS, IA

Project Issue Information

Issue Name : MUA intake filter is dirty
Description : MUA intake filter is clogged. Recommend replacement. MUA belt was loose on arrival, tightened and adjusted motor for tension. Resulting in increase of only 21CFM. 308CFM initial reading, 329 final
Created By : National TAB **Assigned To :** National TAB - Dylan Crisman
Status : Open
Priority : High **Asset Tag :** MUA1
Originated Date : 07/02/2024 - Dylan Crisman - National TAB

Project Issue File Details



IMG_4625
07/02/2024



IMG_4605
07/02/2024



IMG_4630
07/02/2024



07-01-24 PIZZA HUT CEDAR FALLS, IA

Project Issue Information

Issue Name : MUA PSP Plenum is clogged
Description : MUA airflow is high and the discharge pressure indicates that the top of the PSP is dirty. The PSP needs to be dropped down and then the top thoroughly cleaned. It should be cleaned approximately every 2 years minimum.
Created By : National TAB **Assigned To :** National TAB - Dylan Crisman
Status : Open
Priority : Urgent **Asset Tag :** MUA1
Originated Date : 07/03/2024 - Dylan Crisman - National TAB

Project Issue File Details



Image_29_
07/03/2024



IMG_4605
07/03/2024



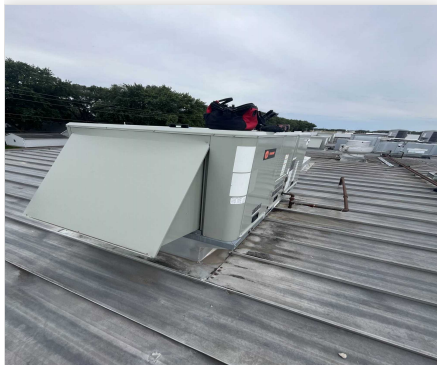
07-01-24 PIZZA HUT CEDAR FALLS, IA

Project Issue Information

Issue Name : RTU-1 economizer not functional
Description : Economizer for RTU-1 is not functional. Damper was manually set but will remain open even during unoccupied hours. Recommend servicing so that the damper will open to the minimum position during occupied hours and close during unoccupied hours.

Created By : National TAB **Assigned To :** National TAB - Dylan Crisman
Status : Open
Priority : Low **Asset Tag :** RTU1
Originated Date : 07/02/2024 - Dylan Crisman - National TAB

Project Issue File Details



IMG_4615
07/02/2024



07-01-24 PIZZA HUT CEDAR FALLS, IA

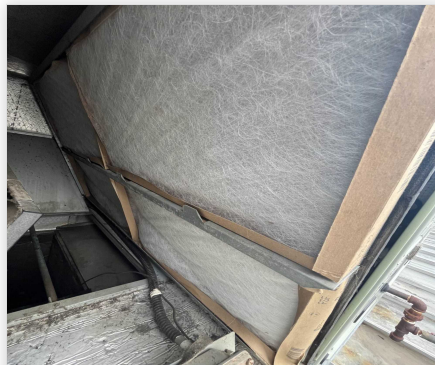
Project Issue Information

Issue Name : RTU-1 Final Filters
Description : RTU-1 has construction filters currently installed for final filters. Recommend replacing with correct size. Qty 4 16x25x2 merv 8 rated pleated filters.
Created By : National TAB **Assigned To :** National TAB - Dylan Crisman
Status : Open
Priority : Low **Asset Tag :** RTU1
Originated Date : 07/02/2024 - Dylan Crisman - National TAB

Project Issue File Details



IMG_4615
07/02/2024



IMG_4617
07/02/2024

FCU1



FCU2



MUA1



RTU1



AIR BALANCE SCHEDULE

UNIT	HVAC SUPPLY		HVAC RETURN		HVAC OUTDOOR		OA %		HOOD MAKE-UP		HOOD EXHAUST		GENERAL EXH.	
	DESIGN	ACTUAL	DESIGN	ACTUAL	DESIGN	ACTUAL	DESIGN	ACTUAL	DESIGN	ACTUAL	DESIGN	ACTUAL	DESIGN	ACTUAL
RTU-1	2400	2132	1900	1669	500	463	20.8%	21.7%						
FCU-1	1600	1107	1250	803	350	304	21.9%	27.5%						
FCU-2	1600	1101	1250	837	350	264	21.9%	24.0%						
MUA-1									900	308				
EF-1											1100	917		
EF-2											560	570		
EF-3													129	129
EF-4														
TOTALS	3200	2208	2500	1640	700	568			900	308	1660	1487	129	129

NET BUILDING AIRFLOW CALCULATION

TOTALS	DESIGN	ACTUAL
TOTAL OA	1600	876
TOTAL EXHAUST	1789	1616
NET AIRFLOW	-189	-740

DOOR TESTED	BUILDING PRESSURE MEASUREMENTS (IN. H2O)
FRONT	-0.081
SIDE	
REAR	-0.0916
AVERAGE	-0.0863

FINAL CHECKS

- ACTUAL NET AIRFLOW COINCIDES WITH DESIGN: ✓

- MEASURED PRESSURES COINCIDES WITH ACTUAL NET AIRFLOW: ✓

- PRESSURE FALLS WITHIN IMC TOLERANCE OF +/-0.02" W.C. ✗

NOTES:

CheckList List

- SITE PICTURES
- TECH - STEP 1: INITIAL READINGS
- TECH - STEP 2: INITIAL WALKTHROUGH
- TECH - STEP 3: UNIT DATA AND EVAL
- TECH - STEP 4: TEST, ADJUST AND BALANCE
- TECH - STEP 5: FINAL TESTS



07-01-24 PIZZA HUT CEDAR FALLS, IA

CheckList Information

Name : SITE PICTURES **Status :** Completed
Assigned Organization : National TAB **Asset :**
Requesting Organization : National TAB
Created Date : 07/01/2024 - Wale Odofin - National TAB
Completed Date : 07/03/2024 - Dylan Crisman - National TAB

CheckList Item Details

STORE FRONT

Comment:



IMG_4647
07/02/2024

RTU-1

Comment:



IMG_4615
07/02/2024

RTU-2

Comment:



IMG_4638
07/02/2024



IMG_4639
07/02/2024

MAU-1

Comment:



IMG_4625
07/02/2024

EF-1

Comment:



IMG_4619
07/02/2024

EF-2

Comment:



IMG_4622
07/02/2024

EF-3

Comment:



IMG_4664
07/03/2024

HOOD-1

Comment:



IMG_4605
07/02/2024

HOOD-2

Comment:



IMG_4609
07/02/2024



07-01-24 PIZZA HUT CEDAR FALLS, IA

CheckList Information

Name : TECH - STEP 1: INITIAL READINGS **Status :** Not Completed
Assigned Organization : National TAB **Asset :**
Requesting Organization : National TAB
Created Date : 07/01/2024 - Wale Odofin - National TAB

CheckList Item Details

INITIAL BUILDING REVIEW:

What is the initial building pressure before making any changes?

Comment:

-0.0933"

Are thermostats programmed?

Yes

Comment:

Are building pressure relief working properly?

Comment:

INITIAL AIRFLOWS:

SUPPLY RTU-1

Comment:

2132

OA RTU-1

Comment:

0

SUPPLY RTU-2

Comment:

1107

OA RTU-2

Comment:

SUPPLY RTU-3

Comment:

1101

OA RTU-3

Comment:

EF-1

Comment:

917

EF-2

Comment:

627

EF-3

Comment:

EF-4

Comment:

MAU-1

Comment:

308



07-01-24 PIZZA HUT CEDAR FALLS, IA

CheckList Information

Name : TECH - STEP 2: INITIAL WALKTHROUGH **Status :** Completed

Assigned Organization : National TAB **Asset :**

Requesting Organization : National TAB

Created Date : 07/01/2024 - Wale Odofin - National TAB

Completed Date : 07/02/2024 - Dylan Crisman - National TAB

CheckList Item Details

INITIAL SITE WALKTHROUGH

All diffusers and grilles are installed and match design? Yes

Comment:

All hood filters installed and accounted for? Yes

Comment:

Hoods are wired and have power? Yes

Comment:

Hood is free of alarms? Yes

Comment:

Thermostats have power? Yes

Comment:

Have trades/general contractor been notified about any issues and are they created on FaciliBuild?

Comment:

Yes



07-01-24 PIZZA HUT CEDAR FALLS, IA

CheckList Information

Name : TECH - STEP 3: UNIT DATA AND EVAL **Status :** Not Completed

Assigned Organization : National TAB **Asset :**

Requesting Organization : National TAB

Created Date : 07/01/2024 - Wale Odofin - National TAB

CheckList Item Details

UNIT DATA AND EVALUATION WHILE GATHERING UNIT DATA CHECK THE FOLLOWING:

RTU's/AHU's

Economizers are assembled and functional?

Comment:

DCV Max damper opening position is set to minimum?

Yes

Comment:

Free cooling enthalpy set point set for lowest setting (Typically "D")

Yes

Comment:

Motors are all operating below the FLA rating?

Yes

Comment:

Are belts tight?

Comment:

Yes

If direct drive unit is the speed controller working.

Comment:

Yes

Is gas piping installed and valves turned on?

Yes

Comment:

Unit free of noticeable noise and vibration

Yes

Comment:

EF's

Rotation is correct?

Yes

Comment:

Belts are tight?

Comment:

NA/DD

Grease cup installed on hood fan?

Yes

Comment:

Hinge kit installed installed on hood fan?

Yes

Comment:

Lean fan back. Is grease duct installation adequate and is duct ran all the way to the base of the fan?

Yes

Comment:

Flex conduit is long enough so that fan can be completely tilted back?

Yes

Comment:

There is no major leakage around base of fan?

Yes

Comment:

Is the motor operating below the motor FLA rating?

Yes

Comment:

For restroom fan(s) is the back draft damper installed and can it fully open?	Yes
---	-----

Comment:

Unit free of noticeable noise and vibration?	Yes
--	-----

Comment:

MUA

Rotation is correct?	Yes
----------------------	-----

Comment:

Gas piping is installed and valves are in on position?	Yes
--	-----

Comment:

Heater tested and is functional?	Yes
----------------------------------	-----

Comment:

Internal motorized damper is fully opening?	Yes
---	-----

Comment:

Motor is operating below the FLA rating?	Yes
--	-----

Comment:

Unit free of noticeable noise and vibration?	Yes
--	-----

Comment:

HOODS

Kitchen equipment installed in proper places?	Yes
---	-----

Comment:

Can kitchen equipment be turned on for final smoke test?	Yes
--	-----

Comment:

DOCUMENTATION

Have trades/general contractor been notified about any issues and are they created on FaciliBuild? Yes

Comment:



07-01-24 PIZZA HUT CEDAR FALLS, IA

CheckList Information

Name : TECH - STEP 4: TEST, ADJUST AND BALANCE **Status :** Not Completed
Assigned Organization : National TAB **Asset :**
Requesting Organization : National TAB
Created Date : 07/01/2024 - Wale Odofin - National TAB

CheckList Item Details

TEST, ADJUST, AND BALANCE ALL EQUIPMENT:

DURING TESTING MAKE NOTE OF THE FOLLOWING:

Is space free of drafting?

Comment:

Is space comfortable in all areas?

Comment:

Is the space free of ventilation noise?

Yes

Comment:

If deviations from design were necessary to resolve 1-3 what were they? Otherwise put "NA".

Comment:



07-01-24 PIZZA HUT CEDAR FALLS, IA

CheckList Information

Name : TECH - STEP 5: FINAL TESTS **Status :** Completed
Assigned Organization : National TAB **Asset :**
Requesting Organization : National TAB
Created Date : 07/01/2024 - Wale Odofin - National TAB
Completed Date : 07/03/2024 - Dylan Crisman - National TAB

CheckList Item Details

FINAL TESTS

HOOD CAPTURE TEST

List equipment turned on for testing

Comment:

Oven, fryer

List smoke candle type used

Comment:

CE0163 45 sec 150 CF

Smoke test capture - Perimeter of hood

Comment:

100%

Smoke test capture - Top of cooking surface

Comment:

100%

WITNESS

Date test was completed

07/02/2024

Comment:

TAB tech name / Firm

Comment:

Dylan Crisman / NTi

Site super name / Firm

Comment:

Owner representative name / Firm (if Applicable)

Comment:

Building pressure at front & back doors (All Systems On)

Comment:

-0.0863"

ADDITIONAL

Do actual net building airflow, design net building airflow, and pressure coincide? If not why? (All three should either be positive or negative)

Comment:

No. Due to low airflow on MUA and RTU-1, unable to relieve negative building pressure until punchlist has been corrected.

Thermostats are programmed?

Yes

Comment:

National TAB

Project: 07-01-24 PIZZA HUT CEDAR FALLS, IA

System/Unit: AHU/RTU



Asset: FCU1

AREA:

Unit Data		
	Design	Actual
MFG	NA	YORK
Serial Num	-	W1M6151254
Model Num	NA	TG9S080C16MP11B
Type	-	FCU
Configuration	-	HORIZONTAL
Num OA Filters 1	-	NA
OA Filter Size 1	-	NA
Num Final Filter 1	-	1
Final Filter Size 1	-	16X25

Test Data		
	Design	Actual
SF CFM	1600	1107
SF RPM	-	3000
RA CFM	-	803
OA CFM	350	304
SF Rotation	-	CW
SF System SetPt	-	HIGH SPEED
RA Damper Position	-	6.8V
Min OA Damper Position	-	3.2V
Min OA Damper Type	-	ECONOMIZER
OA Enthalpy Setpt	-	ES5

Motor Data		
	Design	Actual
Motor MFG	-	FASCO
Frame	-	NL
Horsepower	-	0.750
Motor Rpm	-	3000
Phase	-	3
Rated Voltage	-	115
Rated Amperage	-	2.63

General		
	Design	Actual
Fan Rotation Correct	-	YES
Unit Filters Clean	-	YES
Condensate Drain Installed	-	YES

Drive Data		
	Design	Actual
Motor Sheave Size	-	DD
Motor Bore Size	-	DD
Motor Sheave SetPt	-	HI SPEED
Fan Sheave Size	-	DD
Fan Sheave Bore	-	DD
Belt CL Distance	-	DD
Num of Belts	-	DD
Belt Size	-	DD
Belt Alignment	-	DD

Completed By: Dylan Crisman on 07/02/2024

National TAB

Project: 07-01-24 PIZZA HUT CEDAR FALLS, IA

System/Unit: AHU/RTU



Asset: FCU2

AREA:

Unit Data		
	Design	Actual
MFG	NA	YORK
Serial Num	-	W1M6151281
Model Num	NA	TG9S080C16MP11B
Type	-	FCU
Configuration	-	HORIZONTAL
Num OA Filters 1	-	NA
OA Filter Size 1	-	NA
Num Final Filter 1	-	1
Final Filter Size 1	-	16X25

Motor Data		
	Design	Actual
Motor MFG	-	FASCO
Frame	-	NL
Horsepower	-	0.750
Motor Rpm	-	3000
Phase	-	3
Rated Voltage	-	115
Rated Amperage	-	2.63

Drive Data		
	Design	Actual
Motor Sheave Size	-	DD
Motor Bore Size	-	DD
Motor Sheave SetPt	-	HI SPEED
Fan Sheave Size	-	DD
Fan Sheave Bore	-	DD
Belt CL Distance	-	DD
Num of Belts	-	DD
Belt Size	-	DD
Belt Alignment	-	DD

Test Data		
	Design	Actual
SF CFM	1600	1101
SF RPM	-	3000
RA CFM	-	837
OA CFM	350	264
SF Rotation	-	CW
SF System SetPt	-	HI SPEED
RA Damper Position	-	7.2V
Min OA Damper Position	-	2.8V
Min OA Damper Type	-	ECONOMIZER
OA Enthalpy Setpt	-	ES5

General		
	Design	Actual
Fan Rotation Correct	-	YES
Unit Filters Clean	-	NO
Condensate Drain Installed	-	YES

Completed By: Dylan Crisman on 07/02/2024

Notes:
 FILTERS DIRTY. AIRFLOW INCREASED TO 1700 CFM WITH FILTERS TEMPORARILY REMOVED.

Written By: Will Turnbough on 07/03/2024

National TAB

Project: 07-01-24 PIZZA HUT CEDAR FALLS, IA

System/Unit: AHU/RTU



Asset: RTU1

AREA:

Unit Data		
	Design	Actual
MFG	NA	TRANE
Serial Num	-	134211518L
Model Num	NA	YAC072F3R
Type	-	RTU
Configuration	-	VERTICAL
Num OA Filters 1	-	1
OA Filter Size 1	-	36X16
Num Final Filter 1	-	4
Final Filter Size 1	-	16X25

Motor Data		
	Design	Actual
Motor MFG	-	MARATHON
Frame	-	56
Horsepower	-	1
Motor Rpm	-	1725
Phase	-	3
Rated Voltage	-	200
Rated Amperage	-	4.0

Drive Data		
	Design	Actual
Motor Sheave Size	-	4"
Motor Bore Size	-	7/8"
Motor Sheave SetPt	-	0 TURNS OPEN
Fan Sheave Size	-	AK64X1/6"
Fan Sheave Bore	-	1"
Belt CL Distance	-	6.5"
Num of Belts	-	1
Belt Size	-	AX42
Belt Alignment	-	VERIFIED

Test Data		
	Design	Actual
SF CFM	2400	2132
SF RPM	-	1006
RA CFM	-	1716
OA CFM	-	463
RL Amperage	-	3.8/4.0/4.0
SF Rotation	-	CW
SF System SetPt	-	0 TURNS OPEN
RA Damper Position	-	75%
Min OA Damper Position	-	25%
Min OA Damper Type	-	ECONOMIZER
OA Enthalpy Setpt	-	E

General		
	Design	Actual
Fan Rotation Correct	-	YES
Unit Filters Clean	-	YES
Condensate Drain Installed	-	YES

Completed By: Dylan Crisman on 07/02/2024

National TAB

Project: 07-01-24 PIZZA HUT CEDAR FALLS, IA

System/Unit: FAN - Exhaust



Asset: EF1

AREA:

Unit Data		
	Design	Actual
MFG	NA	CAPTIVE-AIRE
Model Num	NA	DU85HFA
Serial Num	-	2857341
Type	-	UPBLAST
Configuration	-	VERTICAL

Test Data		
	Design	Actual
CFM	1210	917
Fan RPM	-	1219
Fan Rotation	-	CCW
Motor RPM	-	1219
Discharge ESP	-	ATM

Motor Data		
	Design	Actual
Motor MFG	-	HSSA
Frame	-	48Y
Horsepower	-	0.750
Motor Rpm	-	1625
Phase	-	1
Voltage (rated)	-	115
Amperage (rated)	-	4.9
Service Factor	-	1.15

Drive Data		
	Design	Actual
Motor Sheave Size	-	DD
Motor Bore Size	-	DD
Motor Sheave SetPt	-	75%
Fan Sheave Size	-	DD
Fan Sheave Bore	-	DD
Belt CL Distance	-	DD
Num of Belts	-	DD
Belt Size	-	DD

Completed By: Dylan Crisman on 07/02/2024

Notes:

HOOD IS FUNCTIONING WELL. DID NOT INCREASE AIRFLOW

Written By: Will Turnbough on 07/03/2024

National TAB

Project: 07-01-24 PIZZA HUT CEDAR FALLS, IA

System/Unit: FAN - Exhaust



Asset: EF2

AREA:

Unit Data		
	Design	Actual
MFG	NA	CAPTIVE-AIRE
Model Num	NA	DU33HFA
Serial Num	-	2857341
Type	-	UPBLAST
Configuration	-	VERTICAL

Test Data		
	Design	Actual
CFM	630	570
Fan Rotation	-	CCW

Motor Data		
	Design	Actual
Motor MFG	-	HSSA
Frame	-	48Y
Horsepower	-	0.500
Motor Rpm	-	1625
Phase	-	1
Voltage (rated)	-	115
Amperage (rated)	-	2.8
Service Factor	-	1.15

Drive Data		
	Design	Actual
Motor Sheave Size	-	DD
Motor Bore Size	-	DD
Motor Sheave SetPt	-	LOW SPEED
Fan Sheave Size	-	DD
Fan Sheave Bore	-	DD
Belt CL Distance	-	DD
Num of Belts	-	DD
Belt Size	-	DD

Completed By: Dylan Crisman on 07/02/2024

Notes:
DECREASED AIRFLOW SLIGHTLY TO HELP IMPROVE BUILDING PRESSURE.

Written By: Will Turnbough on 07/03/2024

National TAB

Project: 07-01-24 PIZZA HUT CEDAR FALLS, IA

System/Unit: FAN - Exhaust



Asset: EF3

AREA:

Unit Data		
	Design	Actual
MFG	NA	GREENHECK
Model Num	NA	SP-B150-QD
Serial Num	-	61958719-0035
Type	-	CEILING
Configuration	-	VERTICAL

Test Data		
	Design	Actual
CFM	-	129
Fan RPM	-	1050
Fan Rotation	-	CCW
Motor RPM	-	1050
Discharge ESP	-	ATM

Motor Data		
	Design	Actual
Motor MFG	-	GREENHECK
Frame	-	NL
Horsepower	-	NL
Motor Rpm	-	1050
Phase	-	1
Voltage (rated)	-	115
Amperage (rated)	-	1.8
Service Factor	-	1.0

Drive Data		
	Design	Actual
Motor Sheave Size	-	DD
Motor Bore Size	-	DD
Motor Sheave SetPt	-	HIGH SPEED
Fan Sheave Size	-	DD
Fan Sheave Bore	-	DD
Belt CL Distance	-	DD
Num of Belts	-	DD
Belt Size	-	DD

Completed By: Dylan Crisman on 07/02/2024

National TAB

Project: 07-01-24 PIZZA HUT CEDAR FALLS, IA

System/Unit: FAN - Supply



Asset: MUA1

AREA:

Unit Data		
	Design	Actual
MFG	NA	CAPTIVE-AIRE
Model Num	NA	D76
Serial Num	-	2857341
Type	-	MUA
Configuration	-	VERTICAL

Motor Data		
	Design	Actual
Horsepower	-	0.750
Phase	-	1
Voltage (rated)	-	115
Amperage (rated)	-	6.8
Service Factor	-	1.15

Drive Data		
	Design	Actual
Motor Sheave Size	-	3.5"
Motor Bore Size	-	5/8"
Fan Sheave Size	-	3"
Fan Sheave Bore	-	7/8"
Belt CL Distance	-	11"
Num of Belts	-	1
Belt Size	-	AX29
Belt Alignment Verified	-	VERIFIED

Gas Heat		
	Design	Actual
Heater Operates (y/n)	-	Y
Flame Status (pass/fail)	-	PASS

Test Data		
	Design	Actual
CFM	-	329
SF RPM	-	1873
Motor RPM	-	1765
SF System SetPt	-	2 TURNS OPEN
Total ESP	-	0.95"
Fan Discharge SP	-	0.95"

General		
	Design	Actual
Fan Rotation Correct	-	YES

Completed By: Dylan Crisman on 07/02/2024

National TAB

Project: 07-01-24 PIZZA HUT CEDAR FALLS, IA

System/Unit: Kitchen Hood Type I



Asset: HD1

AREA:

Unit Data		
	Design	Actual
MFG	NA	CAPTIVE-AIRE
Model Num	NA	NA
Job / Serial Num	-	NL
Type	-	TYPE I CANOPY
Hood length	-	172"
Hood Width	-	32"

Test Data Exhaust		
	Design	Actual
Filter Type	-	SLOT
Filter Size 1	-	3.5X15.5
Filter Qty 1	-	4
Filter AK factor size 1	-	0.37
Filter Total AK Area	-	1.48
Filter1 FPM	-	222
Filter2 FPM	-	230
Filter3 FPM	-	229
Filter4 FPM	-	238
Filter Ave FPM(corr)	-	230
CFM	-	917

Cooking Equipment		
	Design	Actual
Item 1	-	OVEN

Completed By: Dylan Crisman on 07/02/2024

Notes:

Velgrid Reading

1. 190CFM
2. 210 CFM
3. 195 CFM
4. 183 CFM

Written By: Dylan Crisman on 07/02/2024

National TAB

Project: 07-01-24 PIZZA HUT CEDAR FALLS, IA

System/Unit: Kitchen Hood Type I



Asset: HD2

AREA:

Unit Data		
	Design	Actual
MFG	NA	CAPTIVE-AIRE
Model Num	NA	NA
Job / Serial Num	-	NL
Type	-	TYPE I CANOPY
Hood length	-	48"
Hood Width	-	34"

Test Data Exhaust		
	Design	Actual
Filter Type	-	BAFFLE
Filter Size 1	-	16X16
Filter Qty 1	-	2
Filter AK factor size 1	-	1.62
Filter Total AK Area	-	3.24
Filter1 FPM	-	175
Filter2 FPM	-	177
Filter Ave FPM(corr)	-	176
CFM	630	570

Cooking Equipment		
	Design	Actual
Item 1	-	FRYER

Completed By: Dylan Crisman on 07/02/2024