

GENERAL NOTES

PROVIDE MIN. 1" LINING FOR THE FIRST 10 FEET DOWNSTREAM OF EACH VAV BOX. THE SUPPLY/RETURN DUCT SERVING THE CONFERENCE ROOM AND SOUND SENSITIVE ROOMS SHALL BE FULLY LINED.

INSTALLATION OF ALL EXPOSED DUCTWORK SHALL COMPLY WITH THE FOLLOWING STANDARDS:

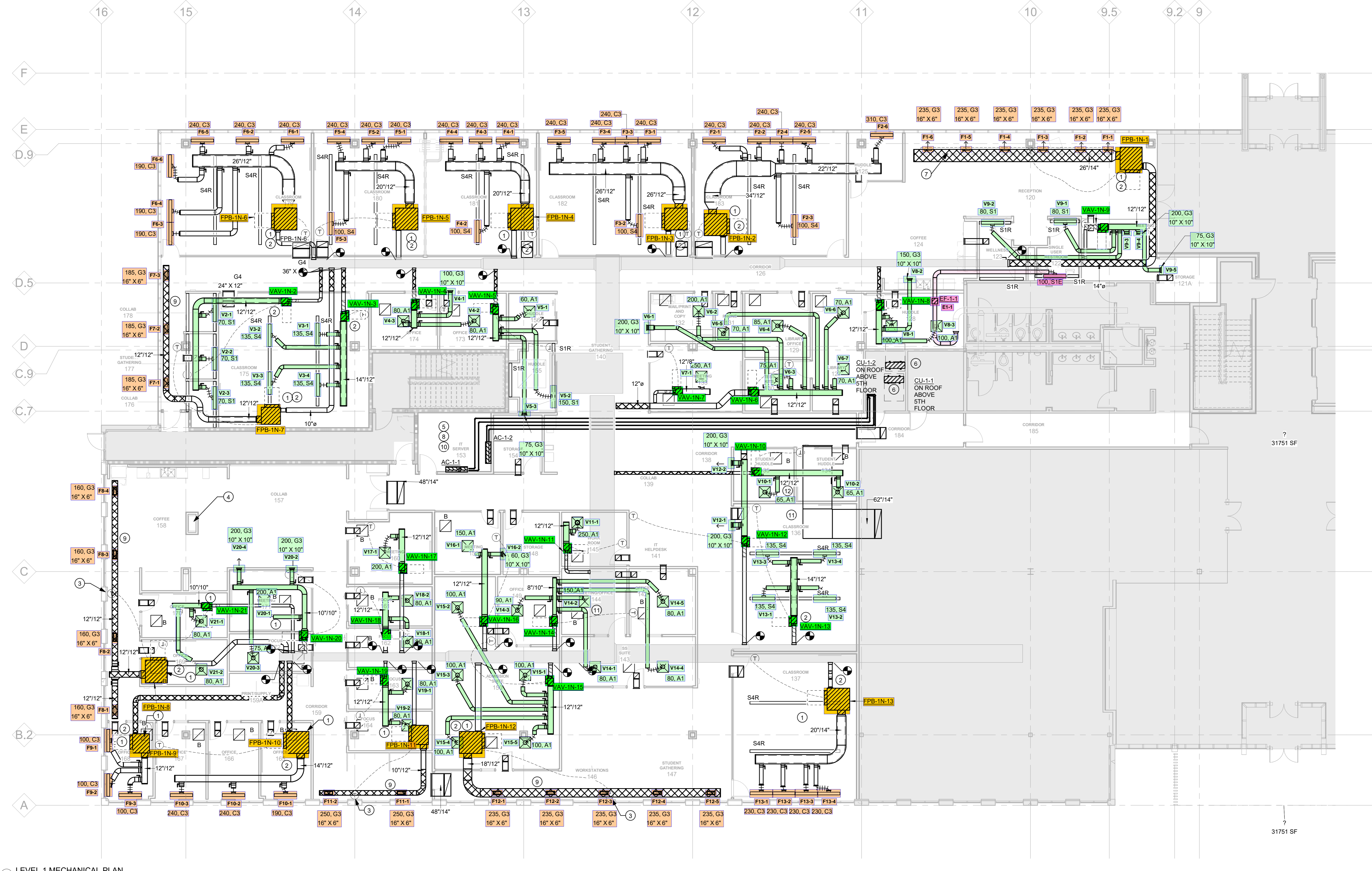
- A) ALL EXPOSED DUCTWORK SHALL BE PAINT GRIP FINISH
- B) ALL EXPOSED AIR DISTRIBUTION ON THE EXPOSED DUCTWORK SHALL HAVE A FINISH WHICH MATCHES THE PAINT GRIP FINISH OF THE DUCT AND COATED UNLESS ALTERNATE FINISHES ARE REQUIRED BY ARCHITECT. SUBMIT AIR DISTRIBUTION FINISHES FOR ARCHITECT AND MECHANICAL ENGINEER'S APPROVAL.
- C) ALL DUCTWORK SHALL BE SUPPORTED AS REQUIRED BY THE OMC AND LOCAL CODES. HOWEVER, WHENEVER POSSIBLE, SUPPORT THE DUCT IN A MANNER TO HAVE THE LEAST VISUAL IMPACT, SUCH AS FOR SMALLER DUCT, THE USE OF AIRCRAFT CABLE HANGING SYSTEMS, USE OF SINGLE ALL THREAD ROD ON LARGE ROUND DUCTS EVEN AT CLOSER DUCT SPACING. USE AIRCRAFT CABLE SEISMIC RESTRAINT SYSTEMS WHEN POSSIBLE.
- D) PROTECT DUCTS EXPOSED IN FINISHED SPACES FROM BEING DENTED, SCRATCHED, OR DAMAGED.
- E) UNLESS SPECIFICALLY INDICATED ON THE PLANS, ALL DUCTWORK SHALL BE INSTALLED ORTHOGONAL TO THE BUILDING PERIMETER WALLS.
- F) TRIM DUCT SEALANTS FLUSH WITH METAL. CREATE A SMOOTH AND UNIFORM EXPOSED BEAD. DO NOT USE TWO-PART TAPE SEALING SYSTEM ON EXPOSED DUCTS.
- G) GRIND WELDS TO PROVIDE SMOOTH SURFACE FREE OF BURRS, SHARP EDGES, AND WELD SPLATTER. WHEN WELDING STAINLESS STEEL WITH A NO. 3 OR 4 FINISH, GRIND THE WELDS FLUSH, POLISH THE EXPOSED WELDS, AND TREAT THE WELDS TO REMOVE DISCOLORATION CAUSED BY WELDING.
- H) MAINTAIN CONSISTENCY, SYMMETRY, AND UNIFORMITY IN THE ARRANGEMENT AND FABRICATION OF FITTINGS, HANGERS AND SUPPORTS, DUCT ACCESSORIES, AND AIR OUTLETS.
- I) MAINTAIN THE CONSISTENCY AND UNIFORMITY OF APPEARANCE FOR ALL DUCTWORK AND AIR DISTRIBUTION.
- J) REPAIR OR REPLACE DAMAGED SECTIONS AND FINISHED WORK THAT DOES NOT COMPLY WITH THESE REQUIREMENTS.

WRAP UNIT WITH A MASS-LOADED VINYL SYSTEM SIMILAR TO THE HUSHCORE PREMIUM SYSTEM.

SUPPLY DUCTWORK SHALL BE 22 GAUGE.  
RETURN DUCTWORK SHALL BE 20 GAUGE.

KEYED NOTES - SHEET IM-201

- 1 PROVIDE FULL SIZE LINED FAN INLET BOOT FOR FAN POWERED BOX.
- 2 WRAP UNIT WITH MASS-LOADED VINYL SYSTEM SIMILAR TO THE HUSHCORE PREMIUM SYSTEM.
- 3 PROVIDE INSULATION PAD TO BE INSTALLED BETWEEN THERMOSTAT AND PERIMETER WALL FOR THERMOSTATS MOUNTED ON EXTERIOR COLUMN/WALLS.
- 4 KEEP AREA FREE AROUND WATER FEATURE.
- 5 PROVIDE IMS SYSTEM. REF IM-601 FOR SCHEDULE.
- 6 COORDINATE LOCATION OF CONDENSING UNIT ON ROOF ABOVE 5TH FLOOR.
- 7 ADJUST BLADES TO 45 DEGREES DOWNWARD.
- 8 COORDINATE WITH MANUFACTURER'S SPECIFICATIONS FOR REFRIGERANT REQUIREMENTS. COORDINATE ROUTING FROM AC UNIT TO ROOF WHERE CONDENSING UNIT IS LOCATED. LOCATION OF CU SHALL NOT EXCEED 225' OF PIPING BETWEEN UNITS.
- 9 MOUNT DUCT AS HIGH AS POSSIBLE.
- 10 INSULATED CONDENSATE DRAIN PIPING ABOVE CEILING. EXTEND AND DISCHARGE TO NEAREST JANITORS MOP SINK. CONDENSATE PIPING SHOWN OFF WALL FOR CLARITY ONLY. ALL PIPING SHALL BE INSTALLED AS HIGH AS POSSIBLE, ABOVE RAISED FLOOR.
- 11 PROVIDE DUCT LAGGING.
- 12 COORDINATE RETURN AIR BOOT WITH EXISTING SPRINKLER LINE.



1 LEVEL 1 MECHANICAL PLAN  
1/8" = 1'-0"



325 N. Wells Street  
Chicago, IL 60654

The Chicago  
School - Dallas

6275 West Plano Parkway  
Plano, TX 75093

Δ Date Issued For  
06/05/2024 Design Development  
07/11/2024 90% CD  
07/17/2024 Issue for Construction

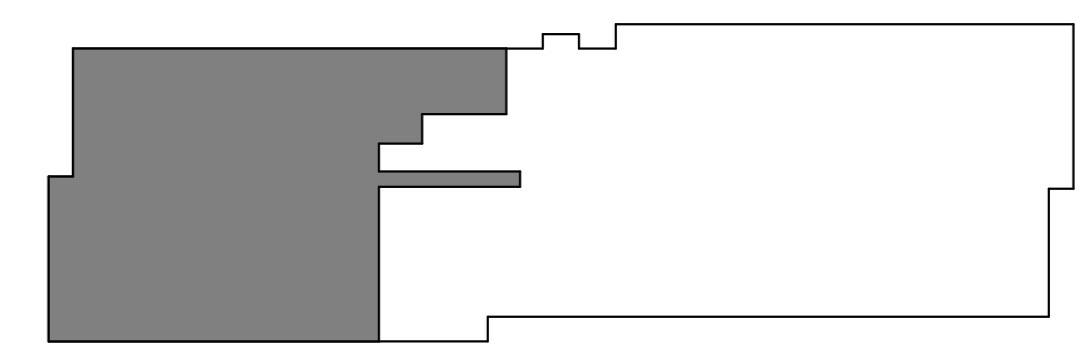
© 2024 Purdy - McGuire  
Mechanical - Electrical Engineers  
17300 North Dallas  
Parkway Suite 300  
Dallas, TX 75248-1147  
Firm Registration # F-1511  
Tel: 972.239-5357  
Fax: 972.239-5231  
www.purdy-mcguire.com

PMI JOB NO. 20400.001  
PROJECT MGR. TODD JOHNSON  
THIS DRAWING SHALL NOT BE  
REPRODUCED FOR ANY PROJECT  
OTHER THAN THE PROJECT NOTED IN  
THE TITLE BLOCK, WITHOUT THE  
WRITTEN CONSENT OF PURDY-  
MCGUIRE, INC. DALLAS, TX

**HED**  
15301 Spectrum Dr.  
Suite 450  
Addicks, Texas  
75001 USA  
(972) 934-8888  
WWW.HEDDESIGN



KEY PLAN



©2024  
2023-CS073-003

Level 1  
Mechanical Plan

M-201