

**Report By:**

National TAB  
1329 E. KEMPER ROAD  
SUITE 4210  
CINCINNATI, OH 45246



**Report: TAB Report**  
**Function: Test, Adjust, & Balance**  
**Date: 01/21/2026**  
**Completed By: National TAB**

**PROJECT**  
**01-12-26 WAWA #6610 AYLETT, VA**

12065 KING WILLIAM ROAD

AYLETT , VA 23009

**Client**

Wawa  
260 West Baltimore Pike

Wawa, PA 19063

# National TAB

Project: 01-12-26 WAWA #6610 AYLETT, VA

## Table Of Contents

<b>Section</b>	<b>Page #</b>
Summary	3
Remarks	4
Balance Schedule	7
Checklist	8
AHU/RTU	19
FAN - Exhaust	28
GRD Layout	35



# National TAB

Project: 01-12-26 WAWA #6610 AYLETT, VA  
Function: Test, Adjust, & Balance

## Project Summary

### Project Summary

The summary below provides a quick understanding of our scope of work and general testing procedures. Enclosed in the report is further detail about your building performance including recommendations, asset data, and pictures. Our focus is to work with the trades to remedy any issues or deficiencies during the actual field balancing and not after the balancing has occurred to achieve a positive environment and outcome. The level of success is determined by the availability of the trades, possible parts needed, or time constraints.

### RTU's (Roof Top Units) w/ Diffusers

Each of the RTU's were measured at their terminal devices or via traverse to establish a total flow for that unit. Each RTU was adjusted to within tolerance of the engineer's design flow. Each outlet was then adjusted to within tolerance of the design flow. Outside air was measured by reading the intake air opening with a velocity grid and multiplying by the free area. The outside air damper was adjusted until the airflow was within the design requirements. Any equipment that fell outside of that tolerance is noted throughout the report.

### General Exhaust Fans w/ Grilles

The general exhaust fans were measured by reading each air device with a flow hood. The total airflow for each fan is equivalent to the sum of these readings. Fan speed was then adjusted so that the airflow was within tolerance of design. Each terminal device was balanced to within tolerance of the design volume using the installed volume dampers. Any equipment that fell outside of this tolerance is noted throughout the report.

### Ceiling Exhaust Fans

The ceiling exhaust fans were measured using a flow hood. If speed adjustment was provided, the fan speed was adjusted to within design tolerance. Any equipment that fell outside of this tolerance is noted throughout the report.

### Final Building Tests

After completing the test and balance the final building pressure was measured. It was confirmed that the building pressure fell within acceptable tolerances and that the pressure measurement coincides with the actual and design net airflow. Any deviations from these standards are noted throughout the report

## Issue List

- RTU-2 Heating Inoperable
- Supply 2-5 Low CFM

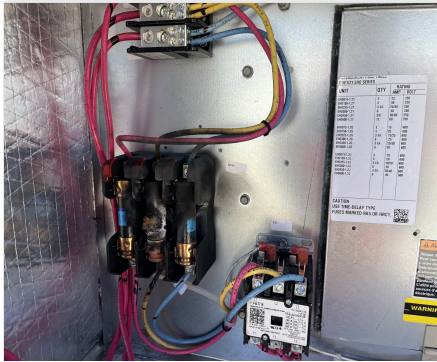


**01-12-26 WAWA #6610 AYLETT, VA**

**Project Issue Information**

**Issue Name :** RTU-2 Heating Inoperable  
**Description :** Electric heating equipped in RTU-2 non-functional, fuses blown.  
**Created By :** National TAB **Assigned To :** National TAB - Brianna Biggs  
**Status :** Open  
**Priority :** Medium **Asset Tag :**  
**Originated Date :** 01/16/2026 - John Barresi - National TAB

Project Issue File Details



01/16/2026

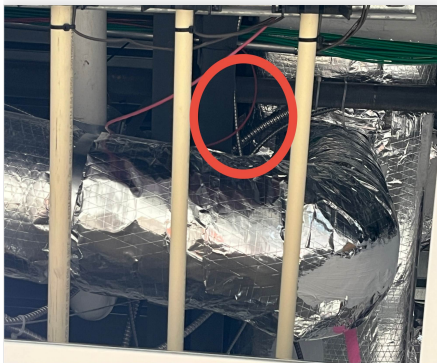


**01-12-26 WAWA #6610 AYLETT, VA**

**Project Issue Information**

**Issue Name :** Supply 2-5 Low CFM  
**Description :** No matter different adjustments, Supply 2-5 will not deliver required CFM. Unable to physically reach damper in ductwork myself as reach is blocked by other pipes/tubes in the way. Damper was forced open by turning the lever with a stick; unable to verify how open/closed damper is.  
**Created By :** National TAB                      **Assigned To :** National TAB - Brianna Biggs  
**Status :** Open  
**Priority :** Medium                                      **Asset Tag :**  
**Originated Date :** 01/15/2026 - John Barresi - National TAB

Project Issue File Details



01/15/2026

### AIR BALANCE SCHEDULE

UNIT	AREA SERVED	HVAC SUPPLY		HVAC RETURN		HVAC OUTDOOR		OA %		HOOD MAKE-UP		HOOD EXHAUST		GENERAL EXH.	
		DESIGN	ACTUAL	DESIGN	ACTUAL	DESIGN	ACTUAL	DESIGN	ACTUAL	DESIGN	ACTUAL	DESIGN	ACTUAL	DESIGN	ACTUAL
RTU-1	BOH	4500	4497	3800	3756	700	741	15.6%	16.5%						
RTU-2	SALES	3400	3272	3020	2564	380	708	11.2%	21.6%						
RTU-3	FOH	2400	2381	2200	1944	200	437	8.3%	18.4%						
EF-1	RESTROOMS													375	360
EF-2	BOH													400	1064
EF-3	TRASHROOM													200	199
<b>TOTALS</b>		10300	10150	9020	8264	1280	1886			0	0	0	0	975	1623

#### NET BUILDING AIRFLOW CALCULATION

TOTALS	DESIGN	ACTUAL
TOTAL OA	1280	1886
TOTAL EXHAUST	975	1623
<b>NET AIRFLOW</b>	<b>305</b>	<b>263</b>

DOOR TESTED	BUILDING PRESSURE MEASUREMENTS (IN. H2O)
FRONT	-0.01
SIDE	-0.01
REAR	-0.009
<b>AVERAGE</b>	<b>-0.0097</b>

#### FINAL CHECKS

- ACTUAL NET AIRFLOW COINCIDES WITH DESIGN: ✔

---

- MEASURED PRESSURES COINCIDES WITH ACTUAL NET AIRFLOW: ✘

---

- PRESSURE FALLS WITHIN IMC TOLERANCE OF +/-0.02" W.C. ✔

#### NOTES:

Larger OA readings for RTU-2 and RTU-3 in compliance with CI due to modified EF-2 setup.  
EF-2 now pulling design of 1100 CFM to be in compliance with CI.

## CheckList List

- WAWA 01: RTU'S/AHU'S
- WAWA 02: LENNOX SETUP PARAMETERS
- WAWA 03: SENSOR WIRING (LENNOX)
- WAWA 04: EF'S
- WAWA 05: CLOSEOUT CHECKS



01-12-26 WAWA #6610 AYLETT, VA

CheckList Information

**Name :** WAWA 01: RTU'S/AHU'S **Status :** Completed

**Assigned Organization :** National TAB **Asset :**

**Requesting Organization :** National TAB

**Created Date :** 12/17/2025 - Tyce Fox - National TAB

**Completed Date :** 01/16/2026 - John Barresi - National TAB

CheckList Item Details

RTU's/AHU's

<b>All diffusers and grilles are installed and match design?</b>	Pass
--	------

**Comment:**

<b>Clean filters installed?</b>	Fail
---------------------------------	------

**Comment:**

PASS / RTU-1, RTU-3 FAIL / RTU-2

<b>Economizers are assembled and functional?</b>	Pass
--	------

**Comment:**

<b>Motors are all operating below the FLA rating?</b>	Pass
---	------

**Comment:**

<b>Are belts tight?</b>	N/A
-------------------------	-----

**Comment:**

<b>If direct drive unit is the speed controller working?</b>	Pass
--	------

**Comment:**

Is gas piping installed and valves turned on?	N/A
Comment:	
Condensate drains are installed?	Pass
Comment:	
Unit free of noticeable noise and vibration	Pass
Comment:	
Final outside air damper position is marked with permanent marker?	Pass
Comment:	
No alarms present?	Pass
Comment:	
Any noticeable duct leakage?	Pass
Comment:	
Total supply and OA flows are balanced within +/-5% and supply & return diffusers within +/-10%?	Pass
Comment:	
Adjust side wall diffusers on spiral duct that blow towards the coffee island drop-in to prevent issues with it staying at temperature. Fan out of the deflector blades or reduce airflow as necessary to prevent drafting.	Pass
Comment:	
<b>IN TEST MODE, TEST THE FOLLOWING:</b>	
Cooling mode is operational? Record EAT/LAT for each unit:	Pass
Comment:	
RTU-1 EAT 56F LAT 50F RTU-2 EAT 58F LAT 50F RTU-3 EAT 59F LAT 52F	
Heating mode is operational? Record EAT/LAT for each unit:	Fail
Comment:	
N/A / RTU-1 EAT N/A LAT N/A FAIL / RTU-2 EAT N/A LAT N/A PASS / RTU-3 EAT 59F LAT 90F	

Dehumidification mode is operational? (Feel dehumidification coil with your hand. Is it hot?) Record EAT/LAT for each unit:

Pass

**Comment:**

RTU-1 EAT 56F LAT 47F RTU-2 EAT 58F LAT 48F RTU-3 EAT 59F LAT 58F

**Notes/Comments :**

Heating fuses blown on RTU-2, heating currently unavailable.

**Date :**01/16/2026



01-12-26 WAWA #6610 AYLETT, VA

**CheckList Information**

**Name :** WAWA 02: LENNOX SETUP PARAMETERS **Status :** Completed  
**Assigned Organization :** National TAB **Asset :**  
**Requesting Organization :** National TAB  
**Created Date :** 12/17/2025 - Tyce Fox - National TAB  
**Completed Date :** 01/16/2026 - John Barresi - National TAB

**CheckList Item Details**

**UNIT ID CONFIGURATIONS**

**BACNET CONFIGURATION: GO TO SETTINGS>GENERAL>CONFIGURATION ID1 POSITION 5 SET TO "N".** Pass

**Comment:**

**NETWORK CONFIGURATION: GO TO SETUP>NETWORK INTEGRATION, SET TO BACNET IP** Pass

**Comment:**

**CONTROL MODE: SET CONTROL MODE TO ROOM SENSOR: CO2, TEMP & HUMIDITY (PER UNIT, AS NEEDED).** Pass

**Comment:**

**INDIVIDUAL PARAMETER CONFIGURATIONS (MECHANICAL CONTRACTOR TO DEFINE / AS APPLICABLE):**

**PARAMETER 105 DEHUMID MODE: 7 NO CONDITIONS** Pass

**Comment:**

**PARAMETER 106 DEHUMID SETPOINT: 50, THIS IS A CENTERED SET POINT (+/-)** Yes

**Comment:**

**PARAMETER 107 DEHUMID DEADBAND: 3 (DEFAULT) THIS IS THE ACTUAL +/- VALUE** Pass

Comment:

PARAMETER 117 CO2 DAMPER MAX OPEN: 50%

Pass

Comment:

PARAMETER 118 CO2 START OPEN PPM: 1500

Pass

Comment:

PARAMETER 119 CO2 MAX OPEN PPM: 1500

Pass

Comment:

PARAMETER 137 OCCHET SET POINT: 68 (BACK UP)

Pass

Comment:

PARAMETER 131 SET TO THE SAME % AS THE MINMIUM OA DAMPER SETPOINT

Pass

Comment:

PARAMETER 139 OCC COOLING SET POINT: 72 (BACK UP)

Pass

Comment:

PARAMETER 154 OCC BLOWER MODE: ON-CONTINUOUS 1

Pass

Comment:

CFM VALUES / MSAV FAN SPEEDS (AIR BALANCER TO DEFINE / IF APPLICABLE):

OA DAMPER SET TO SAME POSITION IN ALL FAN SPEEDS?

Pass

Comment:

ALL FAN SPEEDS SET TO THE SAME CFM VALUE (ENTER SETPOINTS BELOW)

Pass

Comment:

RTU-1 73% RTU-2 48% RTU-3 77%

HEAT CFM VALUE: PER THE HVAC SCHEDULE

Pass

Comment:

**HIGH COOL CFM VALUE: THE HIGH COOL CFM VALUE**

Pass

**Comment:**

**LOW COOL CFM VALUE: MATCH THE HIGH COOL CFM VALUE**

Pass

**Comment:**

**VENTILATION CFM VALUE: MATCH THE HIGH COOL CFM VALUE**

Pass

**Comment:**



**01-12-26 WAWA #6610 AYLETT, VA**

**CheckList Information**

**Name :** WAWA 03: SENSOR WIRING (LENNOX) **Status :** Completed  
**Assigned Organization :** National TAB **Asset :**  
**Requesting Organization :** National TAB  
**Created Date :** 12/17/2025 - Tyce Fox - National TAB  
**Completed Date :** 01/16/2026 - John Barresi - National TAB

**CheckList Item Details**

**COMBINATION TEMPERATURE/HUMIDITY SENSOR**

**Sensors are installed where shown on the drawing?** Pass

**Comment:**

**2 conductor shielded cable has one wire landed to Vin, one to GND, and the shield wire is not connected.** Pass

**Comment:**

**For second shielded cable, one wire is landed to Vout and the shield wire is not connected.** Pass

**Comment:**

**Verify that the CORE or Prodigy controller is sensing a relative humidity (record the reading)** Pass

**Comment:**

RTU-1 13% RTU-2 14% RTU-3 12%



01-12-26 WAWA #6610 AYLETT, VA

CheckList Information

**Name :** WAWA 04: EF'S **Status :** Completed

**Assigned Organization :** National TAB **Asset :**

**Requesting Organization :** National TAB

**Created Date :** 12/17/2025 - Tyce Fox - National TAB

**Completed Date :** 01/16/2026 - John Barresi - National TAB

CheckList Item Details

EF's

Rotation is correct?	Pass
----------------------	------

Comment:

Belts are tight (if applicable)?	Pass
----------------------------------	------

Comment:

Speed controller installed and functional (if applicable)?	Pass
--	------

Comment:

There is no major leakage around base of fan?	Pass
---	------

Comment:

Is the motor operating below the motor FLA rating?	Pass
--	------

Comment:

Back draft damper installed and can it fully open?	Pass
--	------

Comment:

Unit free of noticeable noise and vibration?	Pass
--	------

**Comment:**

---

**Total exhaust flow balanced within +/-5% and grilles are within +/-10%?**

Pass

---

**Comment:**

---



01-12-26 WAWA #6610 AYLETT, VA

**CheckList Information**

**Name :** WAWA 05: CLOSEOUT CHECKS **Status :** Completed

**Assigned Organization :** National TAB **Asset :**

**Requesting Organization :** National TAB

**Created Date :** 12/17/2025 - Tyce Fox - National TAB

**Completed Date :** 01/16/2026 - John Barresi - National TAB

**CheckList Item Details**

**SPACE COMFORT**

**Is space free of drafting?** Pass

**Comment:**

**Is space comfortable in all areas?** Pass

**Comment:**

**Is the space free of ventilation noise?** Pass

**Comment:**

**BUILDING PRESSURE**

**Do actual net building airflow, design net building airflow, and pressure coincide? If not why? (All three should either be positive or negative)** Pass

**Comment:**

FRONT -0.01" / SIDE -0.01" / BACK -0.009"

# National TAB

Project: 01-12-26 WAWA #6610 AYLETT, VA

System/Unit: AHU/RTU



Asset: RTU1

AREA:BOH

Unit Data		
	Design	Actual
MFG	LENNOX	LENNOX
Serial Num	-	5624L06118
Model Num	LCT150H4E	LCT150H4E
Type	RTU	RTU
Configuration	VERTICAL	VERTICAL
Num OA Filters 1	-	2
OA Filter Size 1	-	14.125"X23.75"
Num Final Filter 1	-	4
Final Filter Size 1	-	20"X25"X2"

Motor Data		
	Design	Actual
Motor MFG	-	EBMPAPST
Frame	-	N/L
Horsepower	-	2970W
Motor Rpm	-	1780
Phase	3	3
Rated Voltage	208	208
Rated Amperage	-	8.0

Drive Data	
	Actual
Motor Sheave Size	DD
Motor Bore Size	DD
Motor Sheave SetPt	DD
Fan Sheave Size	DD
Fan Sheave Bore	DD
Belt CL Distance	DD
Num of Belts	DD
Belt Size	DD
Belt Alignment	DD

Test Data		
	Design	Actual
SF CFM	4500	4497
SF RPM	-	1299
RA CFM	3800	3756
OA CFM	700	741
RL Voltage	-	210.8/212.1/214.8
RL Amperage	-	3.1/3.1/3.2
SF Rotation	-	CW
SF System SetPt	-	73%
RA Damper Position	-	74%
Min OA Damper Position	-	26%
Min OA Damper Type	-	ECONOMIZER
OA Enthalpy Setpt	-	12.0 mA

Performance Data		
	Design	Actual
MA Plenum SP	-	-0.47"
Fan Suction SP	-	-0.79"
Fan Discharge SP	-	0.36"
Total ESP	0.70"	0.83"
Fan Total SP	-	1.15"

General	
	Actual
Fan Rotation Correct	YES
Unit Filters Clean	YES
Condensate Drain Installed	YES

Completed By: John Barresi on 01/16/2026



# National TAB

Project:01-12-26 WAWA #6610 AYLETT, VA

## AHU/RTU



### Diffuser Supply (GRD)

#### RTU1/BOH

Asset									
Asset Name	Location	Type	Size	DESIGN CFM	AK	CFM(1)	CFM(2)	FINAL CFM	% to design
SGRD1	FOOD SERVICE	SD6	10"	425	1	502	383	442	104.0
SGRD2	FOOD SERVICE	SD6	10"	425	1	502	393	444	104.5
SGRD3	FOOD SERVICE	SD6	10"	425	1	537	418	431	101.4
SGRD4	FOOD SERVICE	SD6	10"	425	1	619	481	407	95.8
SGRD5	FOOD SERVICE	SD6	10"	425	1	410	314	383	90.1
SGRD6	COFFEE	SD6	12"	500	1	717	574	509	101.8
SGRD7	BOH	SD6	10"	400	1	527	400	419	104.8
SGRD8	BOH	SD6	10"	400	1	541	414	403	100.8
SGRD9	BOH	SD6	10"	400	1	574	432	412	103.0
SGRD10	ELECTRICAL ROOM	SD1	10"	375	1	79	271	339	90.4
SGRD11	TRASH	SD1	10"	300	1	548	410	308	102.7
Total				4500		5556	4490	4497	99.93%

### Diffuser Ret/Exh (GRD)

#### RTU1/BOH

Asset									
Asset Name	Location	Type	Size	DESIGN CFM	AK	CFM(1)	CFM(2)	FINAL CFM	% to design
EGRD1	WASHROOM	RG1	16X14	1200	1	1304		1304	108.7
EGRD2	BOH	RG1	14"	865	1	785		785	90.8
EGRD3	BOH	RG1	14"	865	1	687		687	79.4
EGRD4	BOH	RG1	14"	870	1	698		698	80.2
Total				3800		3474	0	3474	91.42%

# National TAB

Project: 01-12-26 WAWA #6610 AYLETT, VA

System/Unit: AHU/RTU



Asset: RTU2

AREA:SALES

Unit Data		
	Design	Actual
MFG	LENNOX	LENNOX
Serial Num	-	5624K02836
Model Num	LCT102H4E	LCT102H4E
Type	RTU	RTU
Configuration	VERTICAL	VERTICAL
Num OA Filters 1	-	2
OA Filter Size 1	-	14.125"X23.75"
Num Final Filter 1	-	4
Final Filter Size 1	-	20"X25"X2"

Motor Data		
	Design	Actual
Motor MFG	-	EBMPAPST
Frame	-	N/L
Horsepower	-	3300W
Motor Rpm	-	2200
Phase	3	3
Rated Voltage	208	208
Rated Amperage	-	8.7

Drive Data	
	Actual
Motor Sheave Size	DD
Motor Bore Size	DD
Motor Sheave SetPt	DD
Fan Sheave Size	DD
Fan Sheave Bore	DD
Belt CL Distance	DD
Num of Belts	DD
Belt Size	DD
Belt Alignment	DD

Test Data		
	Design	Actual
SF CFM	3400	3272
SF RPM	-	1056
RA CFM	3020	2564
OA CFM	380	708
RL Voltage	-	211.2/212.7/215.0
RL Amperage	-	1.5/1.5/1.6
SF Rotation	-	CW
SF System SetPt	-	48%
RA Damper Position	-	68%
Min OA Damper Position	-	32%
Min OA Damper Type	-	ECONOMIZER
OA Enthalpy Setpt	-	12.0 mA

Performance Data		
	Design	Actual
MA Plenum SP	-	-0.19"
Fan Suction SP	-	-0.37"
Fan Discharge SP	-	0.19"
Total ESP	1"	0.38"
Fan Total SP	-	0.56"

General	
	Actual
Fan Rotation Correct	YES
Unit Filters Clean	NO
Condensate Drain Installed	YES

Completed By: John Barresi on 01/16/2026

Notes:  
dirty filters

unable to push air to diffuser 2-5, damper pushed open with stick, too much construct to reach damper successfully with ladder, unable to tell how open/closed 2-5 is.

Written By: John Barresi on 01/15/2026



# National TAB

Project:01-12-26 WAWA #6610 AYLETT, VA

## AHU/RTU



**Diffuser Supply (GRD)**

**RTU2/SALES**

Asset									
Asset Name	Location	Type	Size	DESIGN CFM	AK	CFM(1)	CFM(2)	FINAL CFM	% to design
SGRD1	BOH	SD5	8"	200	1	251	180	191	95.5
SGRD2	MENS RR	SD5	6"	150	1	220	161	140	93.3
SGRD3	WOMENS RR	SD5	8"	100	1	228	83	96	96.0
SGRD4	HALLWAY	SD1	8"	200	1	253	185	207	103.5
SGRD5	DELIVERY ROOM	SD1	8"	250	1	107	168	191	76.4
SGRD6	SALES	SD2	16"	275	0.43	642	299	254	92.4
SGRD7	SALES	SD2	20"	275	0.43	542	299	245	89.1
SGRD8	SALES	SD2	12"	275	0.43	426	337	273	99.3
SGRD9	SALES	SD2	12"	275	0.43	521	319	287	104.4
SGRD10	SALES	SD2	12"	275	0.43	452	296	247	89.8
SGRD11	SALES	SD2	16"	275	0.43	634	274	278	101.1
SGRD12	SALES	SD2	12"	300	0.43	500	381	292	97.3
SGRD13	SALES	SD2	12"	275	0.43	491	315	286	104.0
SGRD14	SALES	SD2	12"	275	0.43	545	295	285	103.6
Total				3400		5812	3592	3272	96.24%

# National TAB

Project: 01-12-26 WAWA #6610 AYLETT, VA

System/Unit: AHU/RTU



Asset: RTU3

AREA:FOH

Unit Data		
	Design	Actual
MFG	LENNOX	LENNOX
Serial Num	-	5623D06328
Model Num	LCT072H4E	LCT072H4E
Type	RTU	RTU
Configuration	VERTICAL	VERTICAL
Num OA Filters 1	-	1
OA Filter Size 1	-	28.25"X14.375"
Num Final Filter 1	-	4
Final Filter Size 1	-	20"X20"X2"

Motor Data		
	Design	Actual
Motor MFG	-	EBMPAPST
Frame	-	N/L
Horsepower	-	1600W
Motor Rpm	-	3300
Phase	3	3
Rated Voltage	208	208
Rated Amperage	-	4.4

Drive Data	
	Actual
Motor Sheave Size	DD
Motor Bore Size	DD
Motor Sheave SetPt	DD
Fan Sheave Size	DD
Fan Sheave Bore	DD
Belt CL Distance	DD
Num of Belts	DD
Belt Size	DD
Belt Alignment	DD

Test Data		
	Design	Actual
SF CFM	2400	2381
SF RPM	-	2541
RA CFM	2200	1944
OA CFM	200	437
RL Voltage	-	211.6/213.1/215.2
RL Amperage	-	2.4/2.4/2.5
SF Rotation	-	CW
SF System SetPt	-	77%
RA Damper Position	-	71%
Min OA Damper Position	-	29%
Min OA Damper Type	-	ECONOMIZER
OA Enthalpy Setpt	-	12.0 mA

Performance Data		
	Design	Actual
MA Plenum SP	-	-0.28"
Fan Suction SP	-	-0.52"
Fan Discharge SP	-	0.29"
Total ESP	0.50"	0.57"
Fan Total SP	-	0.81"

General	
	Actual
Fan Rotation Correct	YES
Unit Filters Clean	YES
Condensate Drain Installed	YES

Completed By: John Barresi on 01/16/2026

# Unit Data - PHOTO LOG



01/16/2026



01/16/2026



01/16/2026

# National TAB

Project:01-12-26 WAWA #6610 AYLETT, VA

## AHU/RTU



**Diffuser Supply (GRD)**

**RTU3/FOH**

<b>Asset</b>									
<b>Asset Name</b>	<b>Location</b>	<b>Type</b>	<b>Size</b>	<b>DESIGN CFM</b>	<b>AK</b>	<b>CFM(1)</b>	<b>CFM(2)</b>	<b>FINAL CFM</b>	<b>% to design</b>
SGRD1	ASSOCIATE AREA	SD1	8"	200	1	198	174	218	109.0
SGRD2	OFFICE	SD1	8"	150	1	229	202	163	108.7
SGRD3	VESTIBULE	SD5	8"	250	1	211	186	250	100.0
SGRD4	FOH	SD2	18"	450	0.43	513	451	441	98.0
SGRD5	FOH	SD2	18"	450	0.43	521	458	437	97.1
SGRD6	FOH	SD2	14"	450	0.43	535	471	434	96.4
SGRD7	FOH	SD2	14"	450	0.43	533	469	438	97.3
<b>Total</b>				2400		2740	2411	2381	99.21%

# National TAB

Project: 01-12-26 WAWA #6610 AYLETT, VA

System/Unit: FAN - Exhaust



Asset: EF1

AREA:RESTROOMS

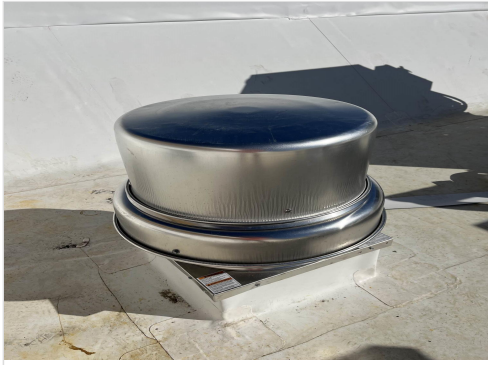
Unit Data		
	Design	Actual
MFG	GREENHECK	GREENHECK
Model Num	GB-098-6	GB-098--6
Serial Num	-	27982254 25J
Type	DOWNBLAST	DOWNBLAST
Configuration	VERTICAL	VERTICAL

Motor Data		
	Design	Actual
Motor MFG	-	US MOTORS
Frame	-	N/L
Horsepower	0.167	0.167
Motor Rpm	-	1725
Phase	1	1
Voltage (rated)	120	115
Amperage (rated)	-	3.8
Service Factor	-	1.35

Test Data		
	Design	Actual
CFM	375	360
Fan RPM	-	1131
Fan Rotation	-	CW
Motor RPM	-	1776
System SetPt	-	3 TURNS OUT
Total ESP	0.38"	0.35"
Fan Inlet SP	-	-0.35"
Fan Discharge SP	-	ATM

Completed By: John Barresi on 01/16/2026

# Unit Data - PHOTO LOG



01/16/2026



01/16/2026

# National TAB

Project: 01-12-26 WAWA #6610 AYLETT, VA  
System/Unit: FAN - Exhaust



Asset: EF2

AREA:BOH

Unit Data		
	Design	Actual
MFG	GREENHECK	GREENHECK
Model Num	GB-098-6	GB-098-6
Serial Num	-	28369036 25L
Type	DOWNBLAST	DOWNBLAST
Configuration	VERTICAL	VERTICAL

Test Data		
	Design	Actual
CFM	1100	1064
Fan RPM	-	1750
Fan Rotation	-	CW
Motor RPM	-	1750
System SetPt	-	10
Total ESP	0.38"	0.76"
Fan Inlet SP	-	-0.76"
Fan Discharge SP	-	ATM

Motor Data		
	Design	Actual
Motor MFG	-	VARI-GREEN
Frame	-	N/L
Horsepower	-	0.25
Motor Rpm	-	1750
Phase	1	1
Voltage (rated)	120	115
Amperage (rated)	-	2.85
Service Factor	-	1.25

Completed By: John Barresi on 01/16/2026

Notes:

No dampers installed into duct to be able to adjust EXH 1-3. Total airflow achieved.

Written By: John Barresi on 01/14/2026

# Unit Data - PHOTO LOG



01/16/2026



01/16/2026

**National TAB**  
 Project:01-12-26 WAWA #6610 AYLETT, VA  
**FAN - Exhaust**



**Diffuser Ret/Exh (GRD)**

**EF2/BOH**

<b>Asset</b>									
<b>Asset Name</b>	<b>Location</b>	<b>Type</b>	<b>Size</b>	<b>DESIGN CFM</b>	<b>AK</b>	<b>CFM(1)</b>	<b>CFM(2)</b>	<b>FINAL CFM</b>	<b>% to design</b>
EGRD1	BOH	RG-2	8X8	200	1	204	204	213	106.5
EGRD2	FOOD SERVICE	RG-2	10X10	500	1	420	435	487	97.4
EGRD3	FOOD SERVICE	RG-2	10X10	400	1	487	473	364	91.0
<b>Total</b>				1100		1111	1112	1064	96.73%

# National TAB

Project: 01-12-26 WAWA #6610 AYLETT, VA

System/Unit: FAN - Exhaust



Asset: EF3

AREA:TRASH ROOM

Unit Data		
	Design	Actual
MFG	GREENHECK	GREENHECK
Model Num	SP-B200	SP-B200
Serial Num	-	204456329-0049 25I
Type	CEILING	CEILING
Configuration	VERTICAL	VERTICAL

Motor Data		
	Design	Actual
Motor MFG	-	GREENHECK
Frame	-	N/L
Horsepower	-	0.033
Motor Rpm	-	1000
Phase	1	1
Voltage (rated)	120	115
Amperage (rated)	-	2.7
Service Factor	-	N/L

Test Data		
	Design	Actual
CFM	200	199
Fan RPM	-	1000
Fan Rotation	-	CCW
Motor RPM	-	1000
System SetPt	-	100%
Total ESP	0.50"	0.04"
Fan Inlet SP	-	-0.04"
Fan Discharge SP	-	ATM

Completed By: John Barresi on 01/16/2026

**Unit Data - PHOTO LOG**



**01/16/2026**

