

Report By:

National TAB
1329 E Kemper Rd, Ste 4210
Cincinnati, OH 45246



Report: Test and Balance
Date: 10/7/2021

PROJECT
KROGER 035-547 FRISCO, TX (PLATINUM PREDESIGN)

3205 W MAIN ST
FRISCO, TX

Client

Kroger Division 035
751 FREEPORT PKWY
COPPELL, TX 75019

Powered by



FACILIBUILD

www.facilibuild.com

National TAB

Project: KROGER 035-547 FRISCO, TX (PLATINUM PREDESIGN)

Table Of Contents

Section	Page #
Remarks List	3
Site Pictures	4
Building Analysis	12
Checklist Data	14
AHU/RTU	19
FAN - Exhaust	25
Kitchen Hood Type I	32
As-built sketch	35

REMARKS

Assigned Organization: National TAB

Status: Not Submitted

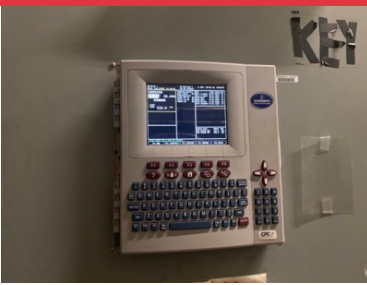
Asset:

PRIORITY (HIGH/LOW/INFO ONLY)	
HIGH	RTU-1 (Main Sales unit) is missing 1-12X24X2 and 2- 24X24X2 FILTERS
HIGH	Building is currently net -2706 CFM. Recommendations below for slowing hood exhausts fans should help neutralize pressure along with increasing outside air on all RTU's during final balancing. Kroger corporate recommends approximately +1000 CFM building pressurization.
LOW	All RTU evaporator coils should be cleaned
LOW	All outside air filters for RTU's are clogged with dirt and need to be cleaned.
LOW	RTU-5 (bakery) has loose insulation inside filter door. Recommend securing
LOW	All RTU filters are dirty and should be replaced.
LOW	Condensor fins are bent on all RTU's. If possible to straighten, this would help improve performance.
LOW	All Trane RTU door hinges are damaged.
INFO ONLY	Hood 1 in the Deli is operating at 306 CFM/ft. For oven cooking application 150 CFM/linear foot is typical. May not be able to reduce that low but should be able to lower significantly during final balancing to improve overall building performance.
INFO ONLY	Hood 2 in the Deli is operating at 303 CFM/ft. For fryer cooking application 225 CFM/linear foot is typical. Recommend reducing closer to this airflow during final balancing to improve overall building performance.
INFO ONLY	Hood 3 (EF-4) in the Seafood area is not in use.

Notes/Comments:



STORE FRONT



CPC CONTROL PANEL



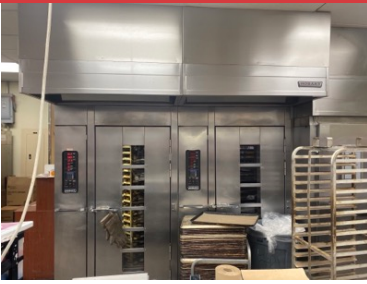
SEAFOOD HOOD



DELI HOOD LEFT



DELI HOOD RIGHT



BAKERY OVENS

2 16x16. 1 16x20

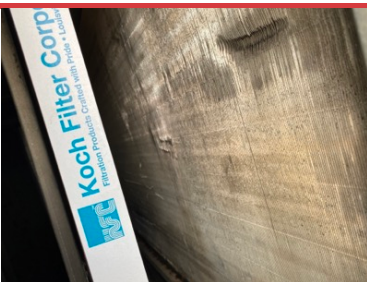


RTU NORTH

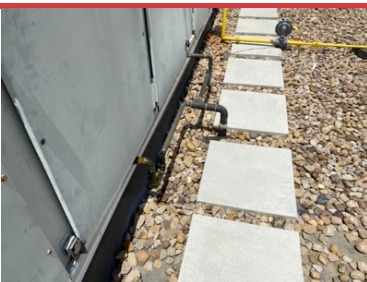


RTU NORTH FILTERS

Missing 1-12X24X2. 2-24X24X2



RTU NORTH EVAPORATOR COIL



RTU NORTH DRAIN



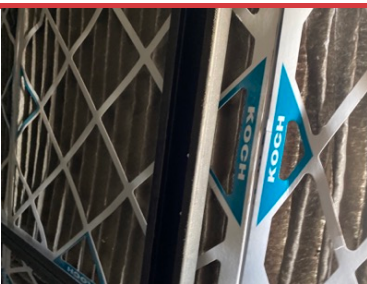
RTU NORTH GAS VALVE POSITION



RTU SOUTH



RTU SOUTH EVAPORATOR COIL



RTU SOUTH FILTERS

Dirty

6-24x24x2 5-12x24x2



PHARMACY RTU3



PHARMACY RTU3 ELECTRIC COMPARTMENT



PHARMACY RTU3 FILTERS



PHARMACY RTU3 CONDENSER COIL

Damaged fins



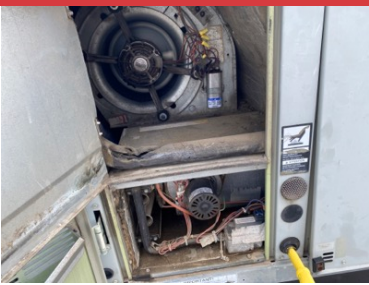
OFFICE RTU4



OFFICE RTU4 FILTERS



OFFICE RTU4 ELECTRICAL COMPARTMENT



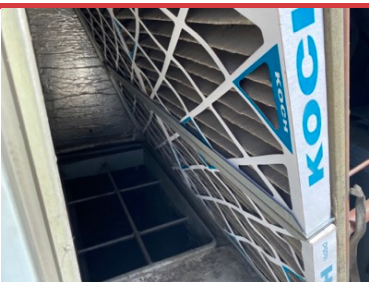
OFFICE RTU4 GAS COMPARTMENT



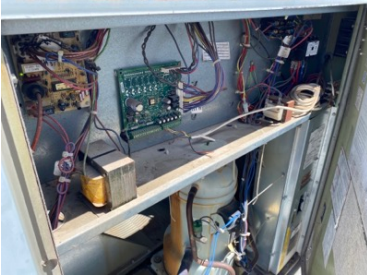
OFFICES RTU4 CONDENSER COIL



BAKERY RTU5



RTU5 BAKERY FILTERS
Dirty



RTU5 BAKERY ELECTRICAL COMPARTMENT



RTU5 BAKERY O/A FILTER
Dirty



BAKERY RTU5 GAS VALVE



BAKERY RTU5 DRAIN



BAKERY RTU5 LOOSE INSULATION



BAKERY RTU5 CONDENSER COIL
Damaged fins



RTU6 LOADING DOCK



DELI HOOD FANS EF1 & EF2



RESTROOM EF3



SEAFOOD HOOD EF4



SEAFOOD EXHAUST EF5



BAKERY OVENS EF6 & EF7

TECH - BUILDING ANALYSIS

Assigned Organization: National TAB

Status: Not Submitted

Asset:

GENERAL CONDITIONS Of Retail (sales) Floor	
Instructions: Fill out based upon actual experience or testing in space and/or communicate with store manager to provide any insight of issues occurring.	
Any drafting occurring? Drafts on open cooler cases, front areas, signs, etc?	none
Any Comfort issues noticed or manager statements?	none
Building pressure good? Is outside air drafting into space? Can you take a building pressure?	doors are open and not able to read bp
Any significant ventilation noise in Retail	none
Perimeter Area's	
Bakery & Deli hoods Capture 100%?	yes
Office/mezzanine area's comfortable or any complaints from employees?	no complaints
Break room area comfortable or any complaints from employees?	no complaints
Any issues in meat/seafood areas or complaints from employees?	none
Any noticable issues in back dock areas?	none
Does building have seperate cooler compressor room within the Facility space (not on roof)?	yes
If Yes on compressor room, is it sealed 100% to remaining space?	yes
Can you determine if the compressor room is causing pressure issues if NOT sealed properly?	n/a
HVAC Distribution systems (within space)	
List any issues that are visually found with broken/damaged air devices:	none
List any issues with any clogged return filters if notices in space:	none
List any issues with any damaged, loose, or missing Ductwork or Air Devices exposed or above ceiling:	none



National TAB

Project: KROGER 035-547 FRISCO, TX (PLATINUM PREDESIGN)

Notes/Comments:



National TAB

Project: KROGER 035-547 FRISCO, TX (PLATINUM PREDESIGN)

TECH - EXHAUST FAN SITE EVAL (GENERAL)

Assigned Organization: National TAB

Status: Not Submitted

Asset:

EXHAUST FAN (General Purpose Exhaust Fans)	
Instructions: Document Fan # for each of the items listed below. If multiple Fans have the same issue, make sure to list all Fans next to each item (Note: use additional notes box below if needed):	
List Fan # and Area Served for each fan review on this checklist:	all general fans
List any deficiency in any physical conditions in fans housing	none
No unusual vibration or noise present? If so list Fan # and issue	yes
Fan Belts properly tensioned and free of damage	yes
Fan & Motor Pulleys properly aligned, able to be adjusted & not rusted/worn. IF so, document issues:	yes
Any additional pulley/belt issues?:	none
Fans motors have power to fans & motors are operable? If not, describe:	yes
Fans have operable disconnects?	yes
Verify voltage input is correct	yes

Notes/Comments:



National TAB

Project: KROGER 035-547 FRISCO, TX (PLATINUM PREDESIGN)

TECH - EXHAUST FAN SITE EVAL (GREASE)

Assigned Organization: National TAB

Status: Not Submitted

Asset:

EXHAUST FAN (Grease Rated Hood Fans)	
Instructions: Document Fan # for each of the items listed below. If multiple Fans have the same issue, make sure to list all Fans next to each item (Note: use additional notes box below if needed):	
List Fan # and Area Served for each fan review on this checklist:	all grease fans
List any deficiency in any physical conditions in fans housing	none
No unusual vibration or noise present? If so list Fan # and issue	yes
Fan Belts properly tensioned and free of damage	yes
Fan & Motor Pulleys properly aligned, able to be adjusted & not rusted/warn. IF so, document issues:	yes
Any additional pulley/belt issues?:	none
Fans motors have power to fans & motors are operable? If not, describe:	yes
Fans have operable disconnects?	yes
Verify voltage input is correct	yes
Does all grease fans have hinge kit assemblies? If not list:	yes
Can all fans be hinged back for cleaning? If not state fan # & issue:	yes
All fans have grease trough's installed?	no
If grease duct is accessible, any visual issues of connections, damage, or too much grease build up?	none

Notes/Comments:



National TAB

Project: KROGER 035-547 FRISCO, TX (PLATINUM PREDESIGN)

TECH - RTU SITE EVAL (GENERAL)

Assigned Organization: National TAB

Status: Not Submitted

Asset:

RTU CHECKLIST (GENERAL AREAS)	
List all RTU(s) Unit Tag & Area Served for this checklist:	all RTU's general areas
List any RTU # that dont have belts tight and in good working order	n/a
List any RTU # that dont have pulleys properly aligned	n/a
Does the motor sheave have any additional adjustment? List any RTU's that are at max adjustment:	none
List any RTU # that dont have Disconnect switch installed?	n/a
All electrical connections visually look in tack and no evidence of electrical damage? Describe for each RTU:	yes
No noticeable vibration or noise exist correct? If so, specify type of noise & which RTU #:	yes
List any RTU # that dont have Outside air dampers installed and functioning	n/a
If outside air is not functioning describe why & which RTU #'s:	O/A filters are clogged
Any loose Insulation inside RTU/AHU? If so, specify where & which RTU #:	rtu5 bakery has loose insulation inside filter door
List any RTU # that have Condensate Pans & drains free of debris & not clogged with Debris (dirt)?	all
Any loose debris or components within Unit? If so, remove & describe. If cannot remove specify why. note which RTU #	no
Additional notes/comments:	condenser fins are heavily damaged on all general RTU's filters are dirty in all RTU's condenser fins are damaged on all RTU's
Additional notes/comments:	door hinges for trane units are damaged for all general rtu's
Date of Inspection	6/24/2021

Notes/Comments:



National TAB

Project: KROGER 035-547 FRISCO, TX (PLATINUM PREDESIGN)

TECH - RTU SITE EVAL (MAIN SALES) RTU1

Assigned Organization: National TAB

Status: Not Submitted

Asset:

RTU CHECKLIST	
RTU Unit Tag & Area Served:	RTU north main sales
Belts are tight and in good working order	yes
Pulleys are properly aligned	yes
Does the motor sheave have any additional adjustment?	yes
Disconnect switch installed?	yes
All electrical connections visually look in tack and no evidence of electrical damage? Describe:	yes
No noticeable vibration or noise exist correct? If so, specify:	yes
Outside air dampers installed and functioning	yes
If outside air is not functioning describe why?	n/a
Any loose Insulation inside RTU/AHU? If so, specify where:	no
Condensate Pans & drains free of debris & not clogged with Debris (dirt)?	yes
Any loose debris or components within Unit? If so, remove & describe. If cannot remove specify why.	RTU IS MISSING 1-12X24X2 AND 2- 24X24X2 FILTERS
Date of Inspection	6/24/2021

Notes/Comments:

dirty filters



National TAB

Project: KROGER 035-547 FRISCO, TX (PLATINUM PREDESIGN)

TECH - RTU SITE EVAL (MAIN SALES) RTU2

Assigned Organization: National TAB

Status: Not Submitted

Asset:

RTU CHECKLIST	
RTU Unit Tag & Area Served:	RTU south main sales floor
Belts are tight and in good working order	yes
Pulleys are properly aligned	yes
Does the motor sheave have any additional adjustment?	yes
Disconnect switch installed?	yes
All electrical connections visually look in tack and no evidence of electrical damage? Describe:	yes
No noticeable vibration or noise exist correct? If so, specify:	yes
Outside air dampers installed and functioning	yes
If outside air is not functioning describe why?	n/a
Any loose Insulation inside RTU/AHU? If so, specify where:	no
Condensate Pans & drains free of debris & not clogged with Debris (dirt)?	yes
Any loose debris or components withing Unit? If so, remove & describe. If cannot remove specify why.	no
Date of Inspection	6/24/2021

Notes/Comments:

dirty filters



National TAB

Project: KROGER 035-547 FRISCO, TX (PLATINUM PREDESIGN)

System/Unit: AHU/RTU

Asset: RTU1

AREA: MAIN SALES SOUTH

Unit Data		
	Design	Actual
MFG	MAIN SALES	TRANE
Model Num	NA	SFHFC404L400 C69B
Serial Num	-	C02M11201
Configuration	-	VERTICAL DISCHARGE
Num OA Filters 1	-	1
OA Filter Size 1	-	57X32
Num OA Filters 2	-	-
OA Filter Size 2	-	-
Num Final Filter 1	-	6
Final Filter Size 1	-	24X24X2
Num Final Filter 2	-	5
Final Filter Size 2	-	12X24X2

Test Data		
	Design	Actual
SF CFM	-	15218
SF RPM	-	833
OA CFM	-	2265
RL Voltage	-	484/486/487
RL Amperage	-	15.2/14.9/14.8
VFD Max SetPt	-	NA
RA Damper Position	-	NA
RA Damper Type	-	NA
OA Damper Position	-	2" OPEN
OA Damper Type	-	MANUAL BLADE

Performance Data		
	Design	Actual
MA Plenum SP	-	-0.68"
Fan Suction SP	-	-1.28"
Fan Discharge SP	-	0.86"
Total ESP	-	1.54"
Fan Total SP	-	2.14"
SA Temp (db/wb)	-	59F

Motor Data		
	Design	Actual
Motor MFG	-	BALDOR
Frame	-	284T
Horsepower	-	15
Motor Rpm	-	1760
Phase	-	3
Rated Voltage	-	460
Rated Amperage	-	19

General		
	Design	Actual
Unit free of Damage	-	YES
Fan Belt Condition	-	GOOD
Unit Filters Clean	-	NO
Evap Coil Clean	-	NO
Evap Coil Free of Frost	-	YES
Condensor Coil Clean	-	YES
Condensor Fins Straight	-	YES
Condensate Drain Installed	-	YES

Drive Data		
	Design	Actual
Motor Sheave Size	-	2MVP75C
Motor Bore Size	-	1.875"
Motor Sheave SetPt	-	MAXIMIZED
Fan Sheave Size	-	2TC160
Fan Sheave Bore	-	1.6875
Num of Belts	-	2
Belt Size	-	C96
Belt Alignment	-	VERIFIED

Gas Heat		
	Design	Actual
Heater Operates (y/n)	-	YES

Completed By: Brian Irvin on 08/16/2021

Notes:



National TAB

Project: KROGER 035-547 FRISCO, TX (PLATINUM PREDESIGN)

System/Unit: AHU/RTU

Asset: RTU2

AREA: MAIN SALES NORTH

Unit Data		
	Design	Actual
MFG	MAIN SALES	TRANE
Model Num	NA	SFHFC604L600 C78B
Serial Num	-	C03K09576
Configuration	-	VERTICAL DISCHARGE
Num OA Filters 1	-	1
OA Filter Size 1	-	57X32
Num OA Filters 2	-	-
OA Filter Size 2	-	-
Num Final Filter 1	-	8
Final Filter Size 1	-	24X24X2
Num Final Filter 2	-	6
Final Filter Size 2	-	12X24X2

Test Data		
	Design	Actual
SF CFM	-	22616
SF RPM	-	796
OA CFM	-	3415
RL Voltage	-	483/486/487
RL Amperage	-	19.2/19.0/18.6
VFD Max SetPt	-	NA
RA Damper Position	-	NA
RA Damper Type	-	NA
OA Damper Position	-	2" OPEN
OA Damper Type	-	MANUAL BLADE

Performance Data		
	Design	Actual
MA Plenum SP	-	-0.75"
Fan Suction SP	-	-1.35"
Fan Discharge SP	-	0.79"
Total ESP	-	1.54"
Fan Total SP	-	2.14"
SA Temp (db/wb)	-	56F

Motor Data		
	Design	Actual
Motor MFG	-	BALDO
Frame	-	286T
Horsepower	-	25
Motor Rpm	-	1760
Phase	-	3
Rated Voltage	-	460
Rated Amperage	-	32.0

General		
	Design	Actual
Unit free of Damage	-	YES
Fan Belt Condition	-	GOOD
Unit Filters Clean	-	NO
Evap Coil Clean	-	NO
Evap Coil Free of Frost	-	YES
Condensor Coil Clean	-	YES
Condensor Fins Straight	-	YES
Condensate Drain Installed	-	YES

Drive Data		
	Design	Actual
Motor Sheave Size	-	2MVP80
Motor Bore Size	-	2.875"
Motor Sheave SetPt	-	MAXIMIZED
Fan Sheave Size	-	2B5V184
Fan Sheave Bore	-	2.1875
Num of Belts	-	2
Belt Size	-	B108
Belt Alignment	-	VERIFIED

Gas Heat		
	Design	Actual
Heater Operates (y/n)	-	YES

Completed By: Brian Irvin on 08/16/2021

Notes:



National TAB

Project: KROGER 035-547 FRISCO, TX (PLATINUM PREDESIGN)

System/Unit: AHU/RTU

Asset: RTU3

AREA: PHARMACY

Unit Data		
	Design	Actual
MFG	GENERAL	TRANE
Model Num	NA	YSC060A4
Serial Num	-	351102091L
Configuration	-	VERTICAL DISCHARGE
Num OA Filters 1	-	1
OA Filter Size 1	-	36X15.5
Num OA Filters 2	-	-
OA Filter Size 2	-	-
Num Final Filter 1	-	2
Final Filter Size 1	-	16X25X1
Num Final Filter 2	-	-
Final Filter Size 2	-	-

Motor Data		
	Design	Actual
Horsepower	-	0.5
Phase	-	1
Rated Voltage	-	115
Rated Amperage	-	5.0

Gas Heat		
	Design	Actual
Heater Operates (y/n)	-	YES

Test Data		
	Design	Actual
SF CFM	-	1891
SF RPM	-	DD
OA CFM	-	214
RL Voltage	-	205
RL Amperage	-	3.6
VFD Max SetPt	-	NA
OA Damper Position	-	0.5" OPEN
OA Damper Type	-	MANUAL BLADE

General		
	Design	Actual
Unit free of Damage	-	NO
Curb & Unit Installed Air Tight	-	YES
Fan Belt Condition	-	DD
Unit Filters Clean	-	YES
Evap Coil Clean	-	YES
Evap Coil Free of Frost	-	YES
Condensor Coil Clean	-	YES
Condensor Fins Straight	-	NO
Condensate Drain Installed	-	YES

Completed By: Brian Irvin on 08/16/2021

Notes:



National TAB

Project: KROGER 035-547 FRISCO, TX (PLATINUM PREDESIGN)

System/Unit: AHU/RTU

Asset: RTU4

AREA: OFFICE

Unit Data		
	Design	Actual
MFG	GENERAL	TRANE
Model Num	NA	YSC0648A4
Serial Num	-	351102020L
Configuration	-	VERTICAL DISCHARGE
Num OA Filters 1	-	1
OA Filter Size 1	-	36X15.5
Num OA Filters 2	-	-
OA Filter Size 2	-	-
Num Final Filter 1	-	2
Final Filter Size 1	-	16X25X2
Num Final Filter 2	-	-
Final Filter Size 2	-	-

Motor Data		
	Design	Actual
Horsepower	-	0.5
Phase	-	1
Rated Voltage	-	115
Rated Amperage	-	5.0

Gas Heat		
	Design	Actual
Heater Operates (y/n)	-	YES

Test Data		
	Design	Actual
SF CFM	-	1622
SF RPM	-	DD
OA CFM	-	236
RL Voltage	-	208
RL Amperage	-	3.8
VFD Max SetPt	-	NA
OA Damper Position	-	0.5" OPEN
OA Damper Type	-	MANUAL BLADE

General		
	Design	Actual
Unit free of Damage	-	NO
Curb & Unit Installed Air Tight	-	YES
Fan Belt Condition	-	DD
Unit Filters Clean	-	YES
Evap Coil Clean	-	YES
Evap Coil Free of Frost	-	YES
Condensor Coil Clean	-	YES
Condensor Fins Straight	-	NO
Condensate Drain Installed	-	YES

Completed By: Brian Irvin on 08/16/2021

Notes:



National TAB

Project: KROGER 035-547 FRISCO, TX (PLATINUM PREDESIGN)

System/Unit: AHU/RTU

Asset: RTU5

AREA: BAKERY

Unit Data		
	Design	Actual
MFG	GENERAL	TRANE
Model Num	NA	YSC090A4
Serial Num	-	361102227L
Configuration	-	VERTICAL DISCHARGE
Num OA Filters 1	-	1
OA Filter Size 1	-	50X26
Num OA Filters 2	-	-
OA Filter Size 2	-	-
Num Final Filter 1	-	4
Final Filter Size 1	-	20X25X2
Num Final Filter 2	-	-
Final Filter Size 2	-	-

Motor Data		
	Design	Actual
Horsepower	-	2
Phase	-	3
Rated Voltage	-	460
Rated Amperage	-	3.1

Gas Heat		
	Design	Actual
Heater Operates (y/n)	-	YES

Test Data		
	Design	Actual
SF CFM	-	2912
SF RPM	-	784
OA CFM	-	322
RL Voltage	-	207/208/205
RL Amperage	-	2.4/2.5/2.6
VFD Max SetPt	-	NA
OA Damper Position	-	0.5" OPEN
OA Damper Type	-	ACTUATED BLADE

General		
	Design	Actual
Unit free of Damage	-	NO
Curb & Unit Installed Air Tight	-	YES
Fan Belt Condition	-	GOOD
Unit Filters Clean	-	NO
Evap Coil Clean	-	YES
Evap Coil Free of Frost	-	YES
Condensor Coil Clean	-	YES
Condensor Fins Straight	-	NO
Condensate Drain Installed	-	YES

Completed By: Brian Irvin on 08/16/2021

Notes:



National TAB

Project: KROGER 035-547 FRISCO, TX (PLATINUM PREDESIGN)

System/Unit: AHU/RTU

Asset: RTU6

AREA: WAREHOUSE

Unit Data		
	Design	Actual
MFG	GENERAL	TRANE
Model Num	NA	YSC060A4
Serial Num	-	NL
Configuration	-	VERTICAL DISCHARGE
Num OA Filters 1	-	1
OA Filter Size 1	-	36X15.5
Num OA Filters 2	-	-
OA Filter Size 2	-	-
Num Final Filter 1	-	2
Final Filter Size 1	-	16X25X2
Num Final Filter 2	-	-
Final Filter Size 2	-	-

Motor Data		
	Design	Actual
Horsepower	-	0.5
Phase	-	1
Rated Voltage	-	115
Rated Amperage	-	5.0

Gas Heat		
	Design	Actual
Heater Operates (y/n)	-	YES

Test Data		
	Design	Actual
SF CFM	-	2031
SF RPM	-	DD
OA CFM	-	157
RL Voltage	-	207
RL Amperage	-	3.8
VFD Max SetPt	-	NA
OA Damper Position	-	0.5" OPEN
OA Damper Type	-	MANUAL BLADE

General		
	Design	Actual
Unit free of Damage	-	NO
Curb & Unit Installed Air Tight	-	YESYES
Fan Belt Condition	-	DD
Unit Filters Clean	-	NO
Evap Coil Clean	-	YES
Evap Coil Free of Frost	-	YES
Condensor Coil Clean	-	YES
Condensor Fins Straight	-	NO
Condensate Drain Installed	-	YES

Completed By: Brian Irvin on 08/16/2021

Notes:

System/Unit: FAN - Exhaust

Asset: EF1

AREA: DELI HOOD LEFT

Unit Data		
	Design	Actual
MFG	NA	JEN FAN
Model Num	NA	TXB2018
Serial Num	-	NL
Type	-	CENTRIFUGAL UPBLAST

Test Data		
	Design	Actual
CFM	-	3059
Fan Rotation	-	CCW
RL Voltage	-	484/482/486
RL Amperage	-	3.1/3.0/3.1

Motor Data		
	Design	Actual
Horsepower	-	0.75
Motor Rpm	-	1725
Phase	-	3
Voltage (rated)	-	460
Amperage (rated)	-	3.7

Drive Data		
	Design	Actual
Motor Sheave SetPt	-	2 TURNS OUT

Completed By: Brian Irvin on 08/16/2021

Notes:

System/Unit: FAN - Exhaust

Asset: EF2

AREA: DELI HOOD RIGHT

Unit Data		
	Design	Actual
MFG	NA	JEN FAN
Model Num	NA	TXB2018
Serial Num	-	NL
Type	-	CENTRIFUGAL UPBLAST

Test Data		
	Design	Actual
CFM	-	3026
Fan Rotation	-	CCW
RL Voltage	-	483/483/484
RL Amperage	-	3.2/3.0/2.9

Motor Data		
	Design	Actual
Horsepower	-	0.75
Motor Rpm	-	1725
Phase	-	3
Voltage (rated)	-	460
Amperage (rated)	-	3.7

Drive Data		
	Design	Actual
Motor Sheave SetPt	-	2 TURNS OUT

Completed By: Brian Irvin on 08/16/2021

Notes:

System/Unit: FAN - Exhaust

Asset: EF3

AREA: MAIN RESTROOMS

Unit Data		
	Design	Actual
MFG	NA	JEN FAN
Model Num	NA	RED8
Serial Num	-	11670
Type	-	CENTRIFUGAL DOWNBLAST

Test Data		
	Design	Actual
CFM	-	428
Fan Rotation	-	CCW
RL Voltage	-	118
RL Amperage	-	2.0

Motor Data		
	Design	Actual
Horsepower	-	0.25
Motor Rpm	-	1700
Phase	-	1
Voltage (rated)	-	115
Amperage (rated)	-	2.4

Drive Data		
	Design	Actual
Motor Sheave SetPt	-	DD

Completed By: Brian Irvin on 08/16/2021

Notes:



National TAB

Project: KROGER 035-547 FRISCO, TX (PLATINUM PREDESIGN)

System/Unit: FAN - Exhaust

Asset: EF4

AREA: SEAFOOD HOOD

Unit Data		
	Design	Actual
MFG	NA	JEN FAN
Model Num	NA	TXB12332-RHUL
Serial Num	-	B21745
Type	-	CENRIFUGAL DOWNBLAST

Test Data		
	Design	Actual
CFM	-	648
Fan Rotation	-	CCW
RL Voltage	-	119
RL Amperage	-	2.3

Motor Data		
	Design	Actual
Horsepower	-	0.33
Motor Rpm	-	1800
Phase	-	1
Voltage (rated)	-	115
Amperage (rated)	-	2.9

Drive Data		
	Design	Actual
Motor Sheave SetPt	-	DD

Completed By: Brian Irvin on 10/07/2021

Notes: NOT IN USE



National TAB

Project: KROGER 035-547 FRISCO, TX (PLATINUM PREDESIGN)

System/Unit: FAN - Exhaust

Asset: EF5

AREA: SEAFOOD DEPT

Unit Data		
	Design	Actual
MFG	NA	CAPTIVE AIRE
Model Num	NA	DR12HFA
Serial Num	-	957494
Type	-	CENTRIFUGAL DOWNBLAST

Test Data		
	Design	Actual
CFM	-	629
Fan Rotation	-	CCW
RL Voltage	-	117
RL Amperage	-	1.7

Motor Data		
	Design	Actual
Horsepower	-	0.18
Motor Rpm	-	1625
Phase	-	1
Voltage (rated)	-	115
Amperage (rated)	-	2.0

Drive Data		
	Design	Actual
Motor Sheave SetPt	-	DD

Completed By: Brian Irvin on 08/16/2021

Notes:



National TAB

Project: KROGER 035-547 FRISCO, TX (PLATINUM PREDESIGN)

System/Unit: FAN - Exhaust

Asset: EF6

AREA: BAKERY OVEN LEFT

Unit Data		
	Design	Actual
MFG	NA	JEN FAN
Model Num	NA	TXB1021
Serial Num	-	B21745
Type	-	CENTRIFUGAL UPBLAST

Test Data		
	Design	Actual
CFM	-	755
Fan Rotation	-	CCW
RL Voltage	-	119
RL Amperage	-	5.3

Motor Data		
	Design	Actual
Horsepower	-	0.5
Motor Rpm	-	1725
Phase	-	1
Voltage (rated)	-	115
Amperage (rated)	-	7.0

Drive Data		
	Design	Actual
Motor Sheave SetPt	-	3 TURNS OUT

Completed By: Brian Irvin on 08/16/2021

Notes:



National TAB

Project: KROGER 035-547 FRISCO, TX (PLATINUM PREDESIGN)

System/Unit: FAN - Exhaust

Asset: EF7

AREA: BAKERY OVEN RIGHT

Unit Data		
	Design	Actual
MFG	NA	JEN FAN
Model Num	NA	TXB1021
Serial Num	-	B21745
Type	-	CENTRIFUGAL UPBLAST

Test Data		
	Design	Actual
CFM	-	761
Fan Rotation	-	CCW
RL Voltage	-	119
RL Amperage	-	5.3

Motor Data		
	Design	Actual
Horsepower	-	0.5
Motor Rpm	-	1725
Phase	-	1
Voltage (rated)	-	115
Amperage (rated)	-	7.0

Drive Data		
	Design	Actual
Motor Sheave SetPt	-	3 TURNS OUT

Completed By: Brian Irvin on 08/16/2021

Notes:



National TAB

Project: KROGER 035-547 FRISCO, TX (PLATINUM PREDESIGN)

System/Unit: Kitchen Hood Type I

Asset: HD1

AREA: DELI HOOD LEFT

Unit Data		
	Design	Actual
MFG	NO PSP	NL
Model Num	NA	NL
Job / Serial Num	-	NL
Type	-	TYPE I CANOPY
Hood length	-	120120
Hood Width	-	42

Performance Data		
	Design	Actual
Smoke Generation Type	-	COOKING
Hood Capture %	-	100%

Test Data Exhaust		
	Design	Actual
Filter Type	-	BAFFLE
Filter Size 1	-	20X25
Filter Size 2	-	20X20
Filter Qty 1	-	4
Filter Qty 2	-	1
Filter AK factor size 1	-	3.42
Filters AK factor size 2	-	2.68
Filter Total AK Area	-	16.36
Filter1 FPM	-	163
Filter2 FPM	-	184
Filter3 FPM	-	196
Filter4 FPM	-	187
Filter5 FPM	-	204
Filter6 FPM	-	-
Filter7 FPM	-	-
Filter8 FPM	-	-
Filter9 FPM	-	-
Filter10 FPM	-	-
Filter11 FPM	-	-
Filter12 FPM	-	-
Filter Ave FPM(corr)	-	187
CFM	-	3059

Cooking Equipment		
	Design	Actual
Item 1	-	OVEN
Item 2	-	OVEN
Item 3	-	-

Completed By: Brian Irvin on 08/16/2021

Notes:



National TAB

Project: KROGER 035-547 FRISCO, TX (PLATINUM PREDESIGN)

System/Unit: Kitchen Hood Type I

Asset: HD2

AREA: DELI HOOD RIGHT

Unit Data		
	Design	Actual
MFG	NO PSP	NL
Model Num	NA	NL
Job / Serial Num	-	NL
Type	-	TYPE I CANOPY
Hood length	-	120
Hood Width	-	42

Performance Data		
	Design	Actual
Smoke Generation Type	-	COOKING
Hood Capture %	-	100%

Test Data Exhaust		
	Design	Actual
Filter Type	-	BAFFLE
Filter Size 1	-	20X25
Filter Size 2	-	20X20
Filter Qty 1	-	4
Filter Qty 2	-	1
Filter AK factor size 1	-	3.42
Filters AK factor size 2	-	2.68
Filter Total AK Area	-	16.36
Filter1 FPM	-	169
Filter2 FPM	-	186
Filter3 FPM	-	190
Filter4 FPM	-	193
Filter5 FPM	-	186
Filter6 FPM	-	-
Filter7 FPM	-	-
Filter8 FPM	-	-
Filter9 FPM	-	-
Filter10 FPM	-	-
Filter11 FPM	-	-
Filter12 FPM	-	-
Filter Ave FPM(corr)	-	185
CFM	-	3026

Cooking Equipment		
	Design	Actual
Item 1	-	FRYERS
Item 2	-	-
Item 3	-	-

Completed By: Brian Irvin on 08/16/2021

Notes:



National TAB

Project: KROGER 035-547 FRISCO, TX (PLATINUM PREDESIGN)

System/Unit: Kitchen Hood Type I

Asset: HD3

AREA: SEAFOOD HOOD

Unit Data		
	Design	Actual
MFG	NO PSP	NL
Model Num	NA	NL
Job / Serial Num	-	NL
Type	-	TYPE II CANOPY
Hood length	-	48
Hood Width	-	48

Performance Data		
	Design	Actual
Smoke Generation Type	-	NA
Hood Capture %	-	NA

Test Data Exhaust		
	Design	Actual
Filter Type	-	NA
Filter Size 1	-	NA
Filter Size 2	-	NA
Filter Qty 1	-	NA
Filter Qty 2	-	NA
Filter AK factor size 1	-	NA
Filters AK factor size 2	-	NA
Filter Total AK Area	-	NA
Filter1 FPM	-	-
Filter2 FPM	-	-
Filter3 FPM	-	-
Filter4 FPM	-	-
Filter5 FPM	-	-
Filter6 FPM	-	-
Filter7 FPM	-	-
Filter8 FPM	-	-
Filter9 FPM	-	-
Filter10 FPM	-	-
Filter11 FPM	-	-
Filter12 FPM	-	-
Filter Ave FPM(corr)	-	-
CFM	-	648

Cooking Equipment		
	Design	Actual
Item 1	-	NA
Item 2	-	NA
Item 3	-	NA

Completed By: Brian Irvin on 08/16/2021

Notes: NOT IN USE




MECHANICAL GENERAL NOTES

1. REFER TO HEATING, VENTILATING AND AIR CONDITIONING SPECIFICATION AND GENERAL CONDITIONS FOR ADDITIONAL REQUIREMENTS.
2. ALL DIFFUSERS AND CEILING GRILLES SHALL BE COORDINATED WITH LAY-IN CEILING GRID AND PROVIDED BY MECHANICAL CONTRACTOR. RE: SCHEDULE ON SHEET M6.1.
3. PROVIDE BALANCING DAMPERS AT POINTS ON SUPPLY, RETURN AND EXHAUST SYSTEMS WHERE BRANCHES LEAD FROM LARGER DUCTS OR AS REQUIRED FOR AIR BALANCING. INSTALL AT A MINIMUM OF TWO DUCT WIDTHS FROM BRANCH TAKEOFF.
4. PROVIDE TURNING VANES IN ALL RECTANGULAR 90 DEGREE MIPED ELBOWS.
5. EXISTING DIFFUSERS TO REMAIN. IT IS THE CONTRACTOR'S RESPONSIBILITY TO CLEAN ALL EXISTING DIFFUSERS AND RETURN GRILLES THAT ARE NOT REPLACED.

MECHANICAL KEYED NOTES

1. CONNECT 6" DOUBLE WALL TYPE "B" FLUE FOR TORTILLA MAKER TO EXISTING PIPING ROUTED UP THRU ROOF.
2. CONNECT TO EXISTING SUPPLY AIR DUCTWORK LOCATED ABOVE CEILING.
3. DUCTLESS SPLIT SYSTEM FAN COIL UNIT. ROUTE REFRIGERANT PIPING CONCEALED WITHIN WALL AND ABOVE CEILING TO CONDENSING UNIT ON ROOF. COORDINATE EXACT LOCATION WITH KROGER PM PRIOR TO INSTALLATION. RE: DETAIL HSD-11/MS.1 FOR MORE INFORMATION.
4. 3/4" CONDENSATE DRAIN PUMPED UP TO ABOVE CEILING.
5. CONDENSATE PIPING TURN DOWN TO APPROVED INDIRECT WASTE RECEPTOR BELOW. RE: P1.1 FOR DRAIN LOCATIONS.



KROGER
SW-547
WITHIN THE WALLS
REMODEL
3205 MAIN STREET
FRISCO, TEXAS
A DEVELOPMENT OF:
KROGER

ISSUE LOG

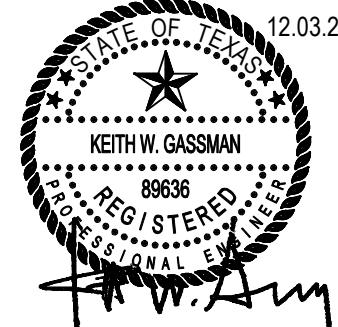
NO.	DESCRIPTION	DATE
80%	REVIEW	11.12.2015
BID AND PERMIT		12.03.2015

 = VERIFIED

N  01 HVAC PLAN
SCALE: 3/32"=1'-0"



O'BRIEN
5310 HARVEST HILL RD.
SUITE 136
DALLAS, TEXAS 75230
972.788.1010
www.obrienarch.com




12.03.2015
KEVIN GASSMAN
REGISTERED PROFESSIONAL ENGINEER
NO. 06628
MECHANICAL
STATE OF TEXAS

DATE:	JOB:	SCALE:
12.03.2015	14052	AS NOTED

SHEET NO.

M1.1

HVAC PLAN



KMSALASOBRIEN
Houston | Dallas/Ft. Worth | Baton Rouge
1425 Greenway Drive, Suite 640
Irving, Texas 75038
972.812.1270 | Registration No. F-4111
KMS Project No. 862150799

COPYRIGHT © 2015 O'BRIEN. THESE DRAWINGS, OR PARTS THEREOF, MAY NOT BE REPRODUCED IN ANY FORM BY ANY METHOD, FOR ANY PURPOSES, WITHOUT PRIOR WRITTEN CONSENT FROM O'BRIEN.