

TAB Punchlist CFA 05887 Bristol FSU

Prepared by Tyler Youells

Dec 4, 2025

Description

20 tasks in this report.

Contents

#94 [CNTL 999] [NEW] (MISC) Humidity Sensors	3
#93 [DUCT 001] [NEW] – Double thickness turning vanes	4
#92 [CNTL 505] [NEW] Devices not located per plans.	6
#91 [CNTL 999] [NEW] (MISC) Sensor Location note	7
#90 [CURT 500] [NEW] Air curtain heat or fan issue.	8
#89 [EXHA 507] [NEW] Exhaust fan drain line.....	9
#88 [EXHA 508] [NEW] Exhaust fan G2 Drip Guard.....	10
#87 [EXHA 512] [NEW] Exhaust fan not Screwed to the curb	11
#86 [HOOD 999] [NEW] (MISC) Caulking needed.....	12
#85 [UNIT 510] [NEW] Gas inlet grommet.	13
#84 [UNIT 513] [NEW] Equipment is damaged.....	14
#83 [UNIT 517] [NEW] Condensate piping construction.	15
#82 [UNIT 999] [NEW] (MISC) Drive thru Heaters	16
#81 [DUCT 501] [NEW] Insulation stick pins.....	17
#80 [REFG 500] [NEW] WIC/WIF temperatures.	18
#79 [REFG 506] [NEW] WIF door sweep vs threshold.	19
#78 [REFG 508] [NEW] WIC/WIF panel penetrations.....	20
#77 [REFG 516] [NEW] Condenser electrical disconnects.	21
#76 [SITE 500] [NEW] TAB is complete.	21

L05887_Bristol (CT) FSU (CT)

1251 Farmington Avenue, Bristol, Connecticut

L1020005887

#18 [EXHA 510] [NEW] EF-2 grease exhaust duct is not supported. 23

#94 [CNTL 999] [NEW] (MISC) Humidity Sensors

Status
Open

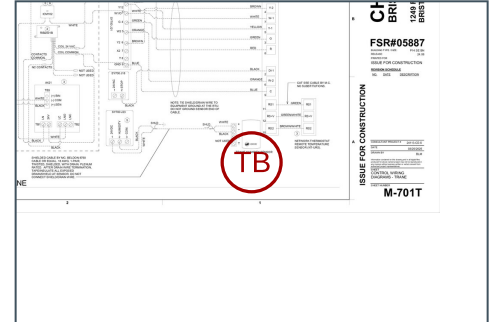
Created
Dec 4, 2025 5:38 PM
tyouells@nationaltab.com

Sheet
M-701T

Type
Planned Work

Last Updated
Dec 4, 2025 5:40 PM

List
TAB Punch List



Description

Humidity Sensors were backordered from Trane. Per RJ they are arriving onsite 12/5 and will be installed by MC. Verify RTUs are ready humidity once completed.

Photos



20251204_174043_photo
Tyler Youells
Dec 4, 2025 5:40 PM



20251204_174025_photo
Tyler Youells
Dec 4, 2025 5:40 PM



20251204_174015_photo
Tyler Youells
Dec 4, 2025 5:40 PM



20251204_173955_photo
Tyler Youells
Dec 4, 2025 5:39 PM

#93 [DUCT 001] [NEW] – Double thickness turning vanes.

Status
Open

Start Date
Dec 4, 2025

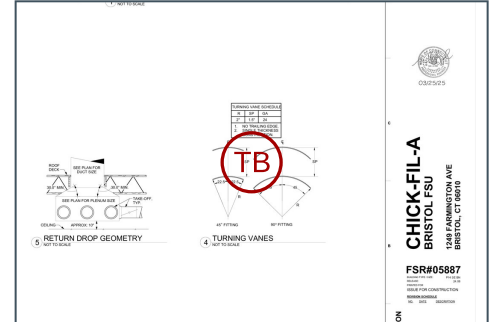
Sheet
M-501

Type
Planned Work

Created
Dec 4, 2025 4:09 PM
tyouells@nationaltab.com

List
TAB Punch List

Last Updated
Dec 4, 2025 5:19 PM



Description

Double thickness turning vanes are present in the system. Per specification only single thickness are to be installed in 90 degree turns where any dimension is greater than 12". Note units have been balanced and all ESPs are under design indicating the double thickness vanes are not causing restriction or reduced energy efficiency. recommend review by the project team.

Photos

L05887_Bristol (CT) FSU (CT)

1251 Farmington Avenue, Bristol, Connecticut

L1020005887



IMG_4800

Tyler Youells

Dec 4, 2025 5:02 PM



IMG_4808

Tyler Youells

Dec 4, 2025 5:02 PM



IMG_4813

Tyler Youells

Dec 4, 2025 5:02 PM



IMG_4797

Tyler Youells

Dec 4, 2025 5:02 PM

L05887_Bristol (CT) FSU (CT)

1251 Farmington Avenue, Bristol, Connecticut

L1020005887

#92 [CNTL 505] [NEW] Devices not located per plans.

Status

Open

Start Date

Dec 4, 2025

Sheet

M-101T

Type

Planned Work

Created

Dec 4, 2025 4:09 PM
tyouells@nationaltab.com

List

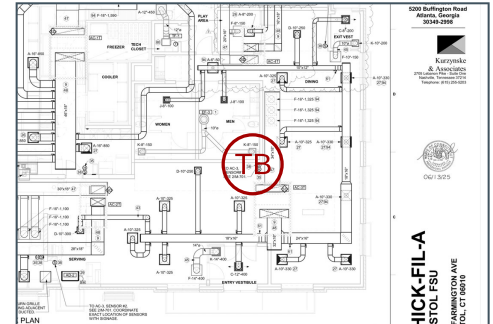
TAB Punch List

Last Updated

Dec 4, 2025 5:19 PM

Description

Control not installed at drawing location. (sensor, *stat, etc). AC-3 Sensor-1 Temp/Hum is not located per the MSET. Installed location may be deemed suitable, recommend review by project and relocate if deemed necessary.



Photos



IMG_4785
Tyler Youells
Dec 4, 2025 5:02 PM



IMG_4786
Tyler Youells
Dec 4, 2025 5:02 PM

#91 [CNTL 999] [NEW] (MISC) Sensor Location note

Status
Open

Start Date
Dec 4, 2025

Sheet
M-101T

Type
Planned Work

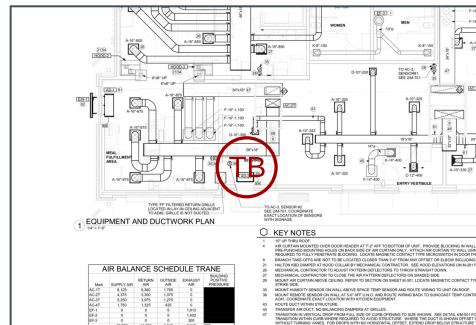
Created
Dec 4, 2025 4:09 PM
tyouells@nationaltab.com

List
TAB Punch List

Last Updated
Dec 4, 2025 5:19 PM

Description

AC-3 Sensor-2 is installed where shown on the drawing, but location may be deemed not Ideal. Recommend review from project team to approve current location or relocate if deemed necessary. It seems like current location it could be thrown off by drafts from AC-1 diffuser.



Photos



IMG_4787
 Tyler Youells
 Dec 4, 2025 5:02 PM



IMG_4792
 Tyler Youells
 Dec 4, 2025 5:02 PM

#90 [CURT 500] [NEW] Air curtain heat or fan issue.

Status
Open

Start Date
Dec 4, 2025

Sheet
M-101T

Type
Planned Work

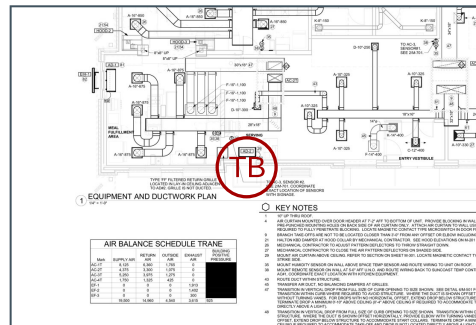
Created
Dec 4, 2025 4:09 PM
tyouells@nationaltab.com

List
TAB Punch List

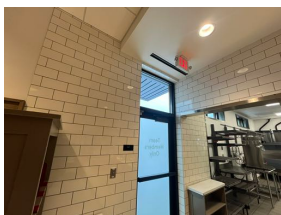
Last Updated
Dec 4, 2025 5:19 PM

Description

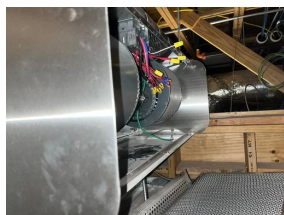
Air curtain heating element or fan not energizing correctly due to internal mechanical problem (switches work correctly). Serving AD-2 is not operating correctly, sound like the contact pulls in but the AD is not functional. Found cover off during inspection. Ensure AD-2 is made functional, reinstall covers, and set the Timer to 0sec so the AD shuts off immediately after the Door closes for minimal noise disruption.



Photos



IMG_4796
 Tyler Youells
 Dec 4, 2025 5:03 PM



IMG_4795
 Tyler Youells
 Dec 4, 2025 5:03 PM

L05887_Bristol (CT) FSU (CT)

1251 Farmington Avenue, Bristol, Connecticut

L1020005887

#87 [EXHA 512] [NEW] Exhaust fan not Screwed to the curb

Status

Open

Start Date

Dec 4, 2025

Type

Planned Work

Created

Dec 4, 2025 4:09 PM
tyouells@nationaltab.com

List

TAB Punch List

Last Updated

Dec 4, 2025 5:24 PM

Description

Exhaust fan is to be securely Screwed to the curb at the prepunch locations Per manufacturers recommendation.

Photos



IMG_4830
Tyler Youells
Dec 4, 2025 5:04 PM



IMG_4834
Tyler Youells
Dec 4, 2025 5:04 PM



IMG_4829
Tyler Youells
Dec 4, 2025 5:04 PM

L05887_Bristol (CT) FSU (CT)

1251 Farmington Avenue, Bristol, Connecticut

L1020005887

#86 [HOOD 999] [NEW] (MISC) Caulking needed

Status

Open

Start Date

Dec 4, 2025

Type

Planned Work

Created

Dec 4, 2025 4:09 PM
tyouells@nationaltab.com

List

TAB Punch List

Last Updated

Dec 4, 2025 5:24 PM

Description

Caulk edge of Hood-2
against wall, and Caulk
between HD-1L/R

Photos



20251204_170523_photo

Tyler Youells

Dec 4, 2025 5:05 PM



IMG_4778

Tyler Youells

Dec 4, 2025 5:04 PM



IMG_4777

Tyler Youells

Dec 4, 2025 5:04 PM

L05887_Bristol (CT) FSU (CT)

1251 Farmington Avenue, Bristol, Connecticut

L1020005887

#85 [UNIT 510] [NEW] Gas inlet grommet.

Status

Open

Start Date

Dec 4, 2025

Type

Planned Work

Created

Dec 4, 2025 4:09 PM
tyouells@nationaltab.com

List

TAB Punch List

Last Updated

Dec 4, 2025 5:24 PM

Description

AC gas inlet grommet is missing at the gas line/RTU penetration point. AC-1,3 do not have grommets on the gas piping, seal with grommet or plumbers putty.

Photos



IMG_4819

Tyler Youells

Dec 4, 2025 5:05 PM

#84 [UNIT 513] [NEW] Equipment is damaged.

Status
Open

Start Date
Dec 4, 2025

Sheet
M-102T

Type
Planned Work

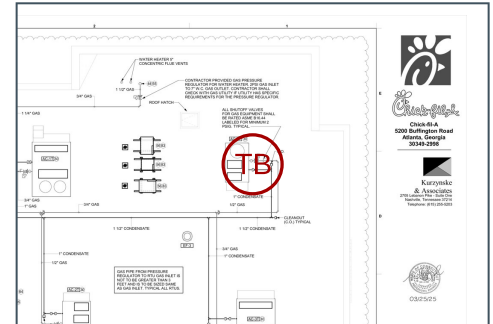
Created
Dec 4, 2025 4:09 PM
tyouells@nationaltab.com

List
TAB Punch List

Last Updated
Dec 4, 2025 5:24 PM

Description

Equipment exterior or interior appears damaged. AC-4 has damage to the heater section panel and needs to be replaced.



Photos



IMG_4818
Tyler Youells
Dec 4, 2025 5:05 PM



IMG_4817
Tyler Youells
Dec 4, 2025 5:05 PM

#83 [UNIT 517] [NEW] Condensate piping construction.

Status
Open

Start Date
Dec 4, 2025

Sheet
M-502

Type
Planned Work

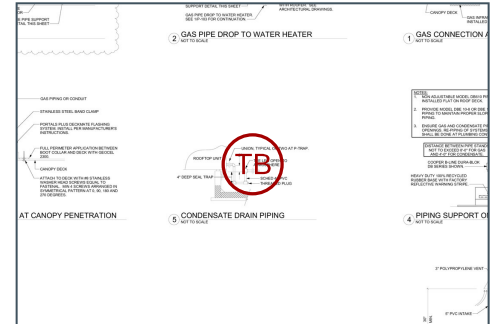
Created
Dec 4, 2025 4:09 PM
tyouells@nationaltab.com

List
TAB Punch List

Last Updated
Dec 4, 2025 5:24 PM

Description

Equipment condensate piping or p-trap is not constructed per normal CFA specifications. Trim the T fitting that is open to the atmosphere so that it is below the outlet pipe of the unit



Photos



IMG_4812
Tyler Youells
Dec 4, 2025 5:06 PM



IMG_4811
Tyler Youells
Dec 4, 2025 5:06 PM



IMG_4810
Tyler Youells
Dec 4, 2025 5:06 PM

#82 [UNIT 999] [NEW] (MISC) Drive thru Heaters

Status
Open

Start Date
Dec 4, 2025

Sheet
M-102T

Type
Planned Work

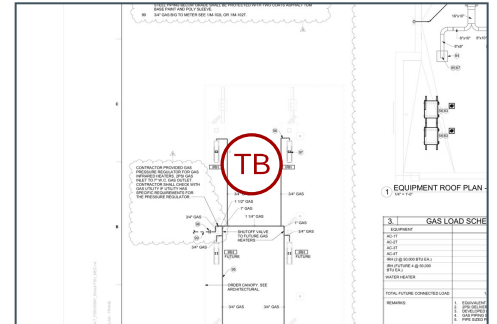
Created
Dec 4, 2025 4:09 PM
tyouells@nationaltab.com

List
TAB Punch List

Last Updated
Dec 4, 2025 5:24 PM

Description

Drive thru heater gas valves are off, Turn valves on and ensure proper startups have been completed.



Photos



IMG_4836
Tyler Youells
Dec 4, 2025 5:06 PM



IMG_4837
Tyler Youells
Dec 4, 2025 5:06 PM

#81 [DUCT 501] [NEW] Insulation stick pins.

Status
Open

Start Date
Dec 4, 2025

Sheet
M-001

Type
Planned Work

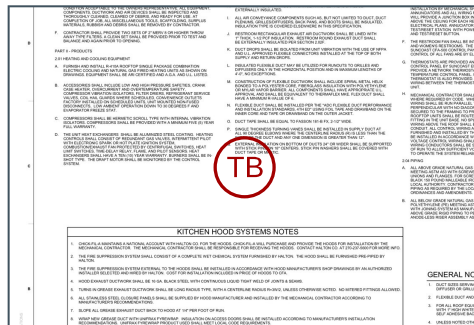
Created
Dec 4, 2025 4:09 PM
tyouells@nationaltab.com

List
TAB Punch List

Last Updated
Dec 4, 2025 5:25 PM

Description

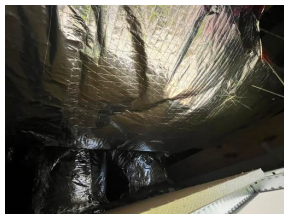
External insulation on bottom of ducts 24" or wider is to be supported by stick pins 18" on center. Cut pins and apply tape or mastic over stick pin washers. AC-2/3 are missing stick pins, AC-2 supply and return trunks, AC-3 on the supply trunks. AC-1 does have stick pins



Photos



IMG_4851
Tyler Youells
Dec 4, 2025 5:06 PM



IMG_4854
Tyler Youells
Dec 4, 2025 5:06 PM



IMG_4852
Tyler Youells
Dec 4, 2025 5:06 PM



IMG_4855
Tyler Youells
Dec 4, 2025 5:06 PM

#80 [REFG 500] [NEW] WIC/WIF temperatures.

Status
Open

Start Date
Dec 4, 2025

Sheet
M-101T

Type
Planned Work

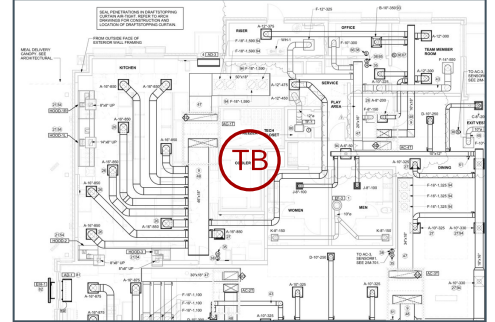
Created
Dec 4, 2025 4:09 PM
tyouells@nationaltab.com

List
TAB Punch List

Last Updated
Dec 4, 2025 5:25 PM

Description

At time of inspection WIC/WIF boxes are not running so capability of holding specified temperatures could not be tested. And or functionality tests of the WIC/WIF could not be performed. Ensure units hold temp and the thermometers are reading accurately



Photos



IMG_4847
Tyler Youells
Dec 4, 2025 5:07 PM



IMG_4850
Tyler Youells
Dec 4, 2025 5:07 PM

#79 [REFG 506] [NEW] WIF door sweep vs threshold.

Status
Open

Start Date
Dec 4, 2025

Sheet
M-101T

Type
Planned Work

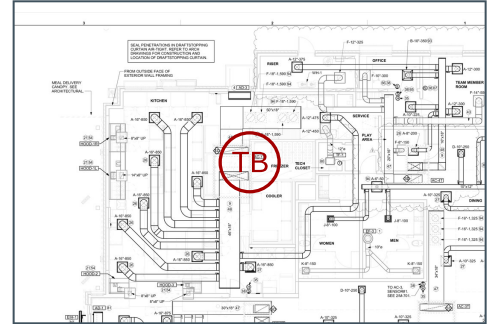
Created
Dec 4, 2025 4:09 PM
tyouells@nationaltab.com

List
TAB Punch List

Last Updated
Dec 4, 2025 5:25 PM

Description

WIF door sweep is not sealed tightly with threshold when door is closed. No light should be present inspecting from the inside out with box lights off. Noticeable gap present



Photos



IMG_4845
Tyler Youells
Dec 4, 2025 5:07 PM

#78 [REFG 508] [NEW] WIC/WIF panel penetrations.

Status
Open

Start Date
Dec 4, 2025

Sheet
M-101T

Type
Planned Work

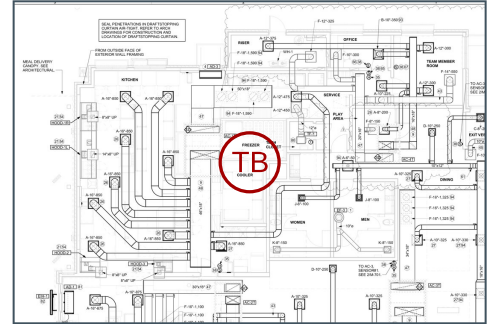
Created
Dec 4, 2025 4:09 PM
tyouells@nationaltab.com

List
TAB Punch List

Last Updated
Dec 4, 2025 5:25 PM

Description

WIF/WIC penetrations are insulated with 2 layers of ¼” foam tape 12” above panel at time of inspection.



Photos



IMG_4841
Tyler Youells
Dec 4, 2025 5:07 PM



IMG_4844
Tyler Youells
Dec 4, 2025 5:07 PM



IMG_4843
Tyler Youells
Dec 4, 2025 5:07 PM



IMG_4842
Tyler Youells
Dec 4, 2025 5:07 PM

#77 [REFG 516] [NEW] Condenser electrical disconnects.

Status
Open

Start Date
Dec 4, 2025

Sheet
M-102T

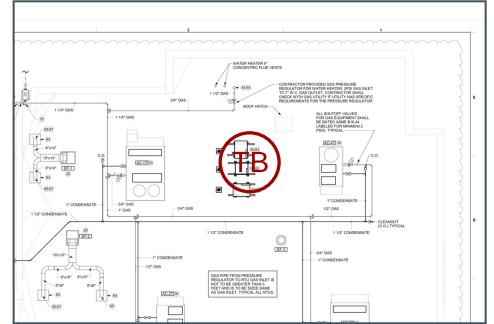
Type
Planned Work

Created
Dec 4, 2025 4:09 PM
tyouells@nationaltab.com

List
TAB Punch List

Last Updated
Dec 4, 2025 5:25 PM

Description
Electrical disconnects are not properly labeled.



Photos



IMG_4839
Tyler Youells
Dec 4, 2025 5:08 PM



IMG_4840
Tyler Youells
Dec 4, 2025 5:08 PM

#76 [SITE 500] [NEW] TAB is complete.

Status
Open

Start Date
Dec 4, 2025

Type
Planned Work

Created
Dec 4, 2025 4:09 PM
tyouells@nationaltab.com

List

Last Updated

L05887_Bristol (CT) FSU (CT)

1251 Farmington Avenue, Bristol, Connecticut

L1020005887

TAB Punch List

Dec 4, 2025 4:09 PM

Description

TAB is complete with only non-critical tasks open or all critical/non-critical tasks closed.

#18 [EXHA 510] [NEW] EF-2 grease exhaust duct is not supported.

Status
Open

Start Date
Oct 13, 2025

Sheet
M-501

Type
Issue

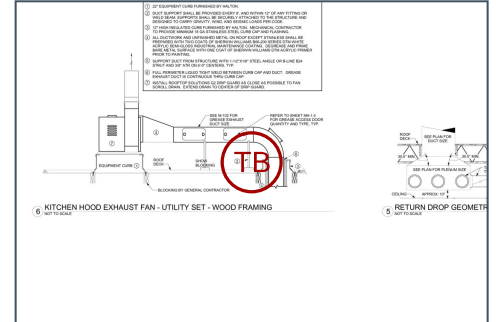
Created
Oct 17, 2025 7:22 AM
ryans@nationaltab.com

List
TAB Punch List

Last Updated
Dec 4, 2025 5:25 PM

Description

Exhaust duct is to be supported per kitchen hood exhaust fan detail on 6'0" centers.



Comments

Complete

RJ Bebey Oct 31, 2025

Miro guard spec was used thus a support at each drop to the space is also needed

Tyler Youells Dec 4, 2025

Photos

L05887_Bristol (CT) FSU (CT)

1251 Farmington Avenue, Bristol, Connecticut

L1020005887



337d4292-52df-48e3-891f-7b1
aaf3a343c

Tyler Youells

Dec 4, 2025 5:09 PM



IMG_4832

Tyler Youells

Dec 4, 2025 5:09 PM



IMG_1903

RJ Bebey

Oct 31, 2025 9:49 AM



Image (13)

Ryan Smith

Oct 17, 2025 7:23 AM