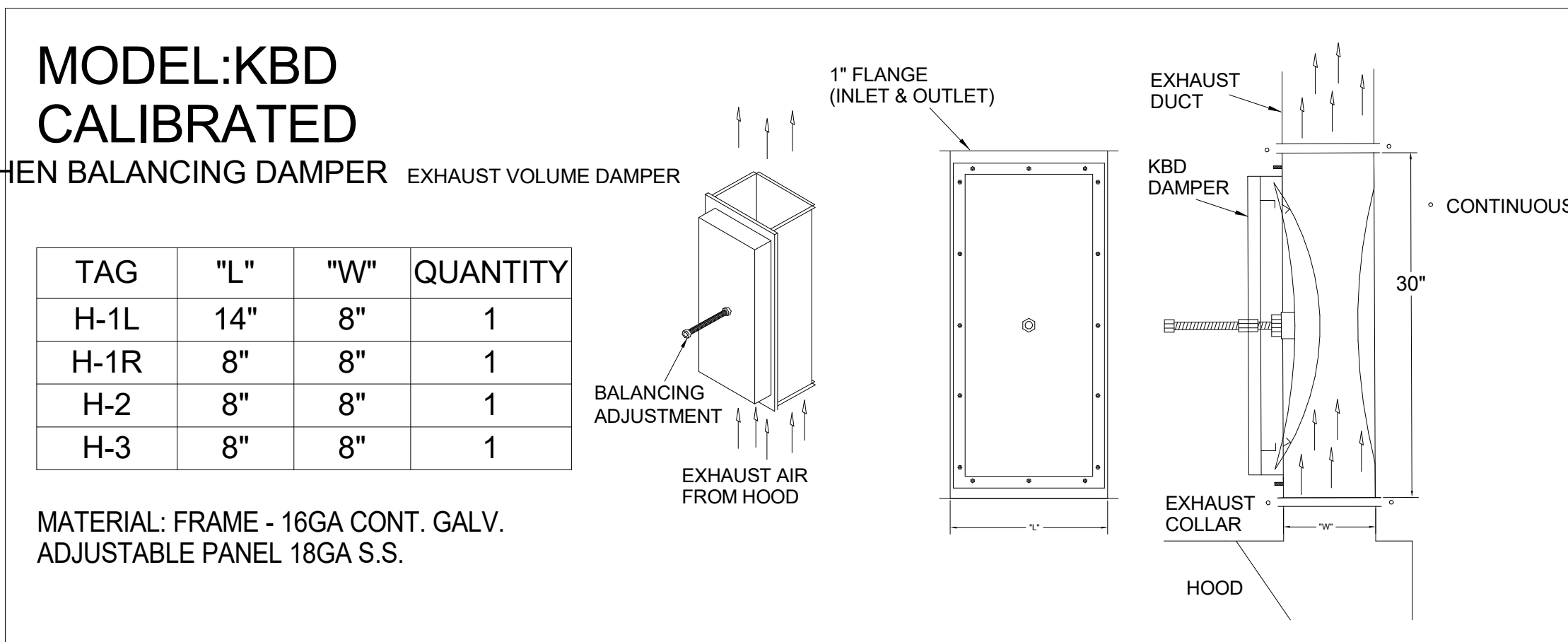
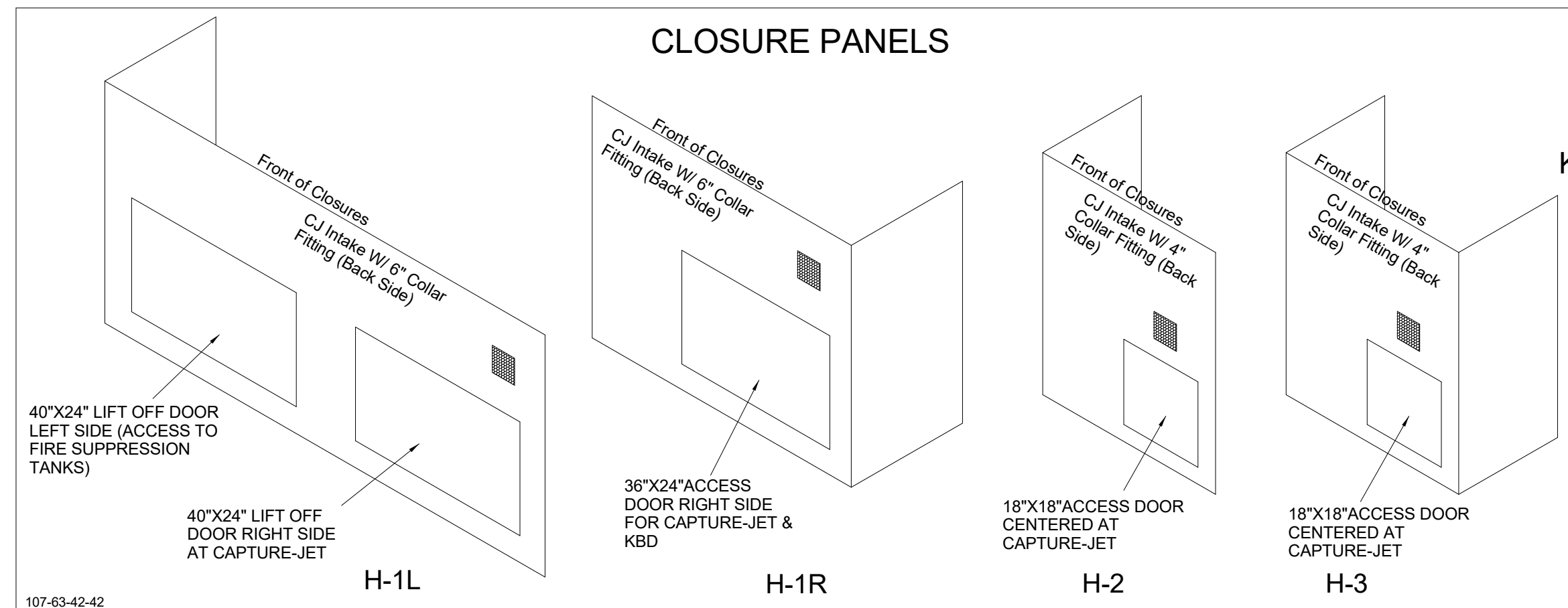


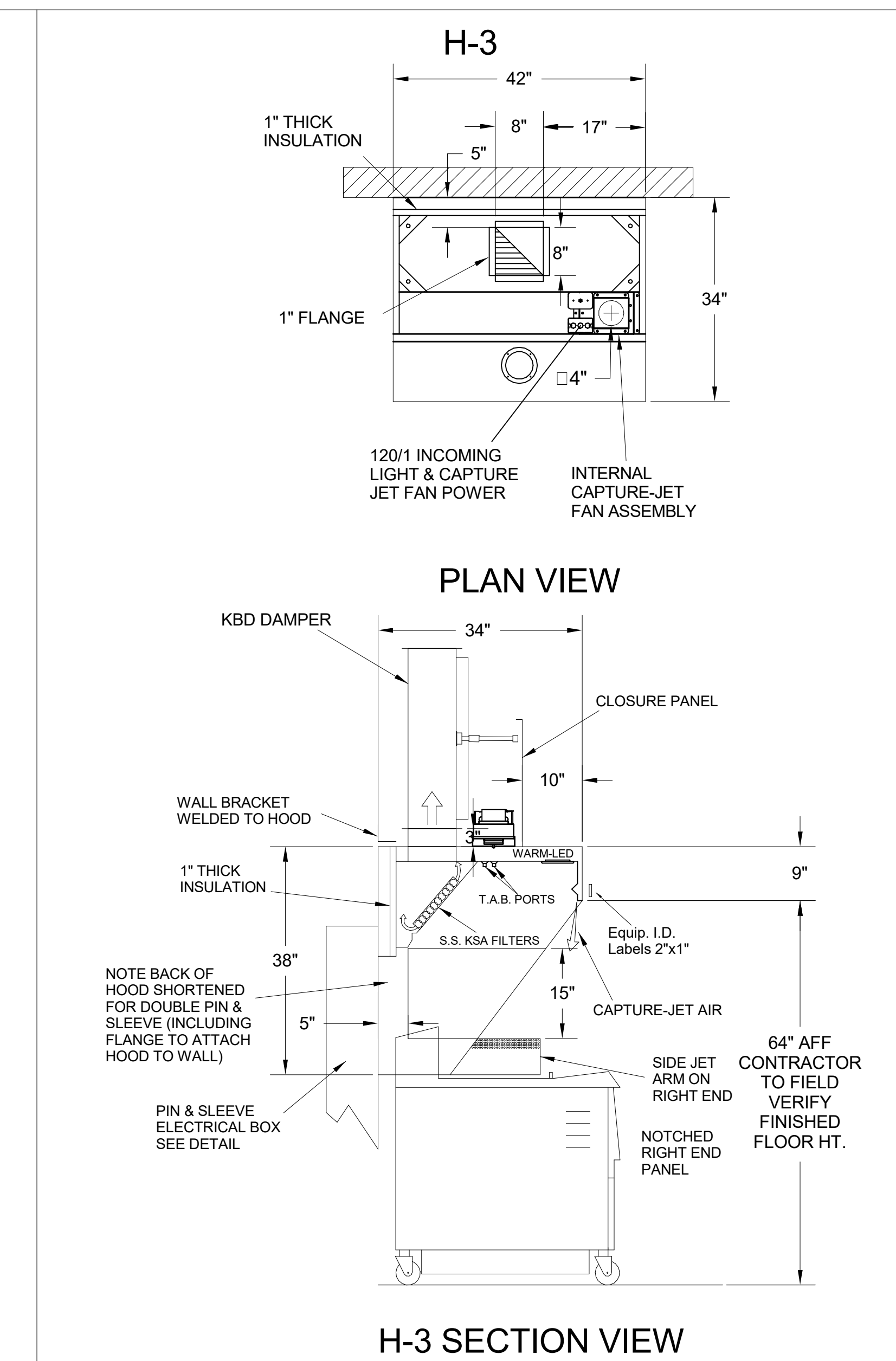
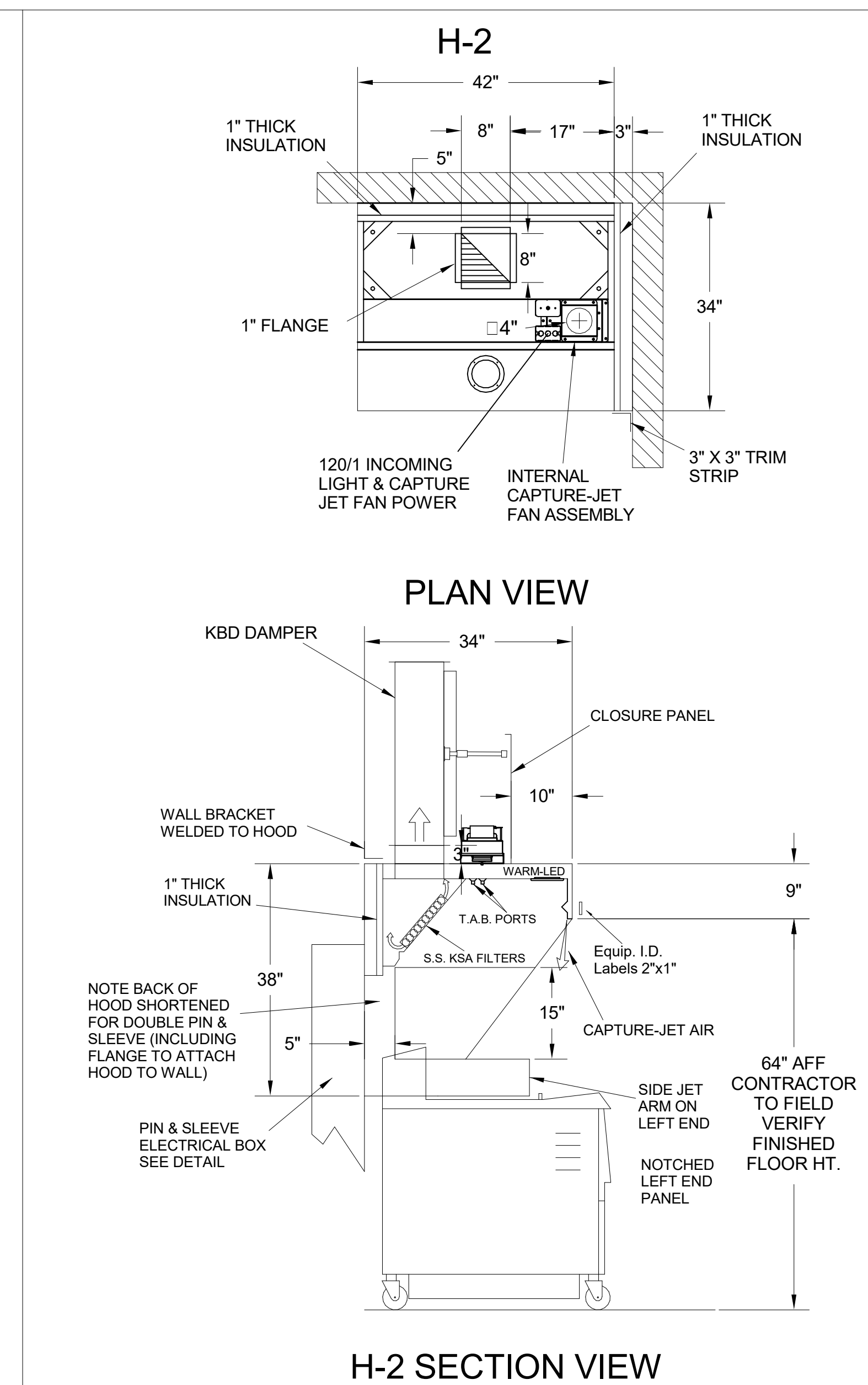
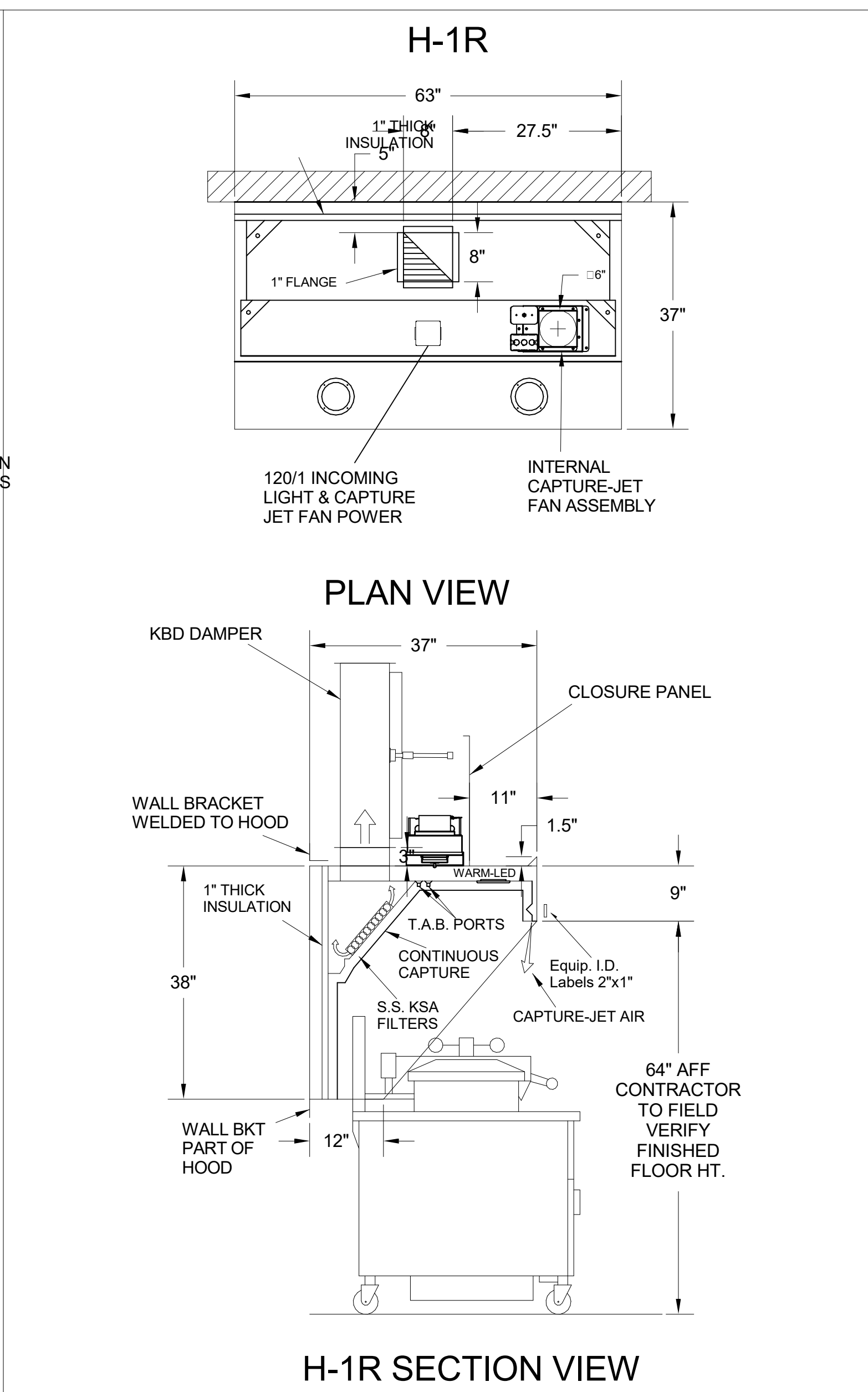
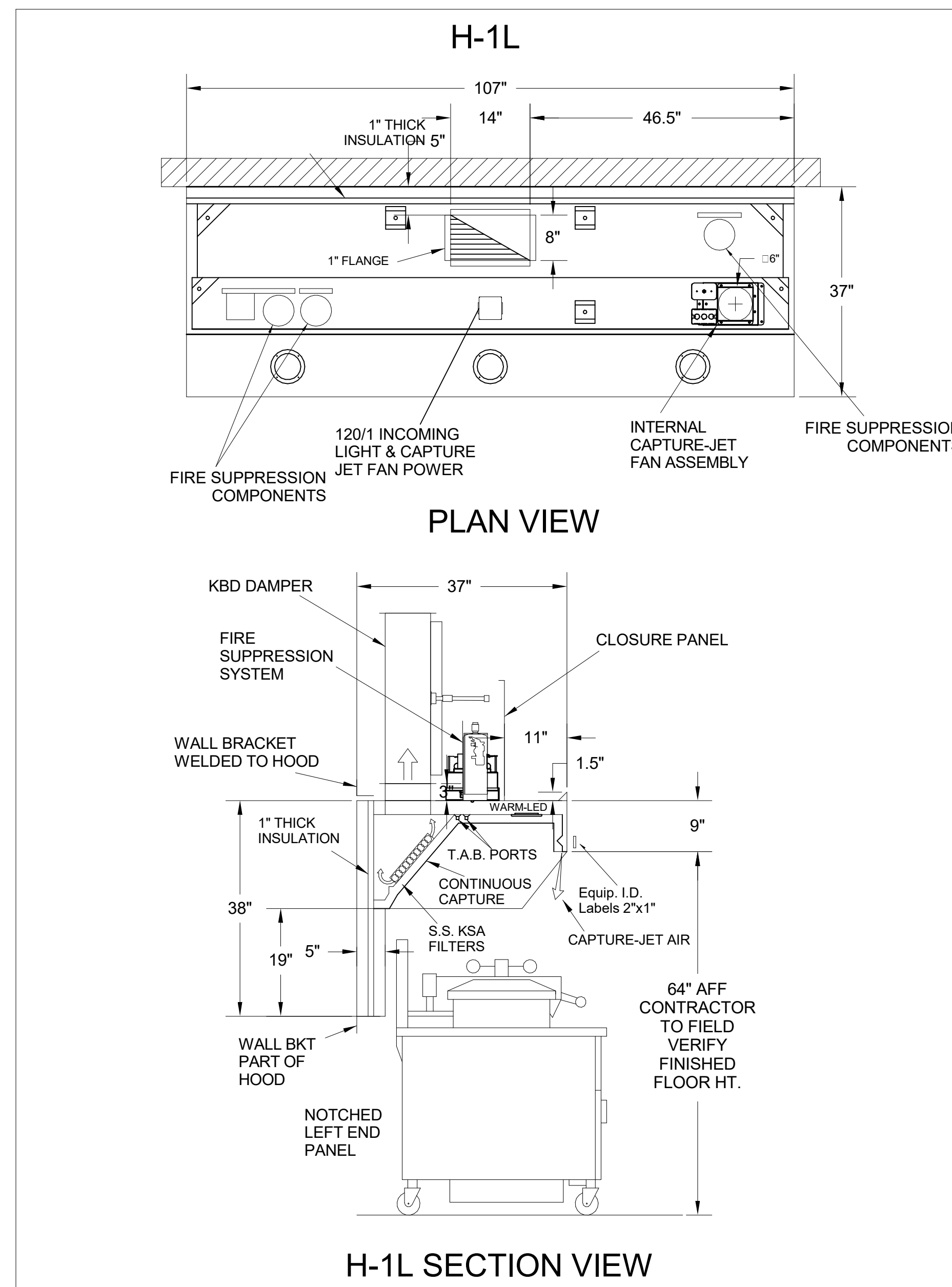
HOOD MODEL	HOOD NUMBER	EXHAUST COLLAR			EXHAUST AIR INFORMATION			CAPTURE AIR INFORMATION		S.S. KSA FILTERS		CEILING CLOSURES			KBD DAMPER	K FACTOR (CFM = K FACTOR * √DP)	MATERIAL		
		QTY	LENGTH	WIDTH	CFM	TAB	SP	CFM	SP	FULL	HALF	LED LIGHTS	QTY	CLOSURE HEIGHT				CEILING HEIGHT	HOOD WEIGHT
KVL-2-IC	H-1L	1	14"	8"	1204	0.13"	0.22"	80	0.30"	5	-	3	2	51"	122"	669 LBS	*	3365	EXPOSED SURFACES 18 GA. S.S.
KVL-2-IC	H-1R	1	8"	8"	709	0.13"	0.23"	47	0.30"	3	-	2	2			394 LBS	*	1959	
KVL-C-IC	H-2	1	8"	8"	701	0.30"	0.39"	30	0.29"	2	-	1	2			245 LBS	*	1291	
KVL-C-IC	H-3	1	8"	8"	701	0.30"	0.39"	30	0.29"	2	-	1	3			245 LBS	*	1291	

FOR REFERENCE ONLY



TAG	"L"	"W"	QUANTITY
H-1L	14"	8"	1
H-1R	8"	8"	1
H-2	8"	8"	1
H-3	8"	8"	1

MATERIAL: FRAME - 16GA CONT. GALV.
ADJUSTABLE PANEL 18GA S.S.



- CEILING CLOSURE RECESSED 11" FROM FRONT TO CREATE SHELF
- FRONT CLOSURE PANEL WITH 40"X24" LIFT OUT DOOR LEFT SIDE (ACCESS TO FIRE SUPPRESSION)
- 40"X24" LIFT DOOR RIGHT SIDE AT CAPTURE-JET WITH FRONT CJ INTAKE
- CONTINUOUS CAPTURE INTERNAL RIGHT END CUTOUT
- 3" REAR STAND-OFF TO HAVE 1" THICK INSULATION
- NOTCHED LEFT END PANEL
- EQUIPMENT COVERED:
(4) PRESSURE FRYERS
(2) GRILLS
- ANSUL WEIGHT = 286 LBS
• AMEREX WEIGHT = 264 LBS

MODEL NO.	SERIAL NO.	ITEM NO.
10000000000000000000	10000000000000000000	10000000000000000000

- CEILING CLOSURE RECESSED 11" FROM FRONT TO CREATE SHELF
- 36"X24" ACCESS DOOR RIGHT SIDE FOR ACCESS TO CAPTURE-JET WITH FRONT CJ INTAKE & KBD
- CONTINUOUS CAPTURE INTERNAL LEFT END CUTOUT
- 3" REAR STAND-OFF TO HAVE 1" THICK INSULATION
- EQUIPMENT COVERED:
(3) PRESSURE FRYERS

MODEL NO.	SERIAL NO.	ITEM NO.
10000000000000000000	10000000000000000000	10000000000000000000

- CEILING CLOSURE RECESSED 10" FROM FRONT TO CREATE SHELF
- 18"X18" ACCESS DOOR CENTERED AT CAPTURE-JET WITH FRONT CJ INTAKE
- NOTCHED LEFT END PANEL
- DOUBLE RECEPTACLE PIN & SLEEVE
- 3"X3" TRIM STRIP FOR STANDOFF ON RIGHT END
- 3" SIDE & REAR STAND-OFF TO HAVE 1" THICK INSULATION
- EQUIPMENT COVERED:
(2) FRYERS

MODEL NO.	SERIAL NO.	ITEM NO.
10000000000000000000	10000000000000000000	10000000000000000000

- CEILING CLOSURE RECESSED 10" FROM FRONT TO CREATE SHELF
- 18"X18" ACCESS DOOR CENTERED AT CAPTURE-JET WITH FRONT CJ INTAKE
- NOTCHED RIGHT END PANEL
- DOUBLE RECEPTACLE PIN & SLEEVE
- 3" REAR STAND-OFF TO HAVE 1" THICK INSULATION
- EQUIPMENT COVERED:
(2) FRYERS

MODEL NO.	SERIAL NO.	ITEM NO.
10000000000000000000	10000000000000000000	10000000000000000000

THE DRAWING MUST BE CHECKED, SIGNED AND RETURNED TO THE APPROPRIATE FACTORY. PLEASE VERIFYING THE FOLLOWING:
1. ALL DIMENSIONAL INFORMATION, MOUNTING POSITIONS AND CLEARANCES.
2. THE TYPE OF COOKING EQUIPMENT.
3. THE LOCATION OF THE EQUIPMENT.
4. THE POSITION OF THE EQUIPMENT.
5. THE POSITION OF THE EQUIPMENT.
6. THE POSITION OF THE EQUIPMENT.
7. THE POSITION OF THE EQUIPMENT.
8. THE POSITION OF THE EQUIPMENT.
9. THE POSITION OF THE EQUIPMENT.
10. THE POSITION OF THE EQUIPMENT.
11. THE POSITION OF THE EQUIPMENT.
12. THE POSITION OF THE EQUIPMENT.
13. THE POSITION OF THE EQUIPMENT.
14. THE POSITION OF THE EQUIPMENT.
15. THE POSITION OF THE EQUIPMENT.
16. THE POSITION OF THE EQUIPMENT.
17. THE POSITION OF THE EQUIPMENT.
18. THE POSITION OF THE EQUIPMENT.
19. THE POSITION OF THE EQUIPMENT.
20. THE POSITION OF THE EQUIPMENT.
21. THE POSITION OF THE EQUIPMENT.
22. THE POSITION OF THE EQUIPMENT.
23. THE POSITION OF THE EQUIPMENT.
24. THE POSITION OF THE EQUIPMENT.
25. THE POSITION OF THE EQUIPMENT.
26. THE POSITION OF THE EQUIPMENT.
27. THE POSITION OF THE EQUIPMENT.
28. THE POSITION OF THE EQUIPMENT.
29. THE POSITION OF THE EQUIPMENT.
30. THE POSITION OF THE EQUIPMENT.
31. THE POSITION OF THE EQUIPMENT.
32. THE POSITION OF THE EQUIPMENT.
33. THE POSITION OF THE EQUIPMENT.
34. THE POSITION OF THE EQUIPMENT.
35. THE POSITION OF THE EQUIPMENT.
36. THE POSITION OF THE EQUIPMENT.
37. THE POSITION OF THE EQUIPMENT.
38. THE POSITION OF THE EQUIPMENT.
39. THE POSITION OF THE EQUIPMENT.
40. THE POSITION OF THE EQUIPMENT.
41. THE POSITION OF THE EQUIPMENT.
42. THE POSITION OF THE EQUIPMENT.
43. THE POSITION OF THE EQUIPMENT.
44. THE POSITION OF THE EQUIPMENT.
45. THE POSITION OF THE EQUIPMENT.
46. THE POSITION OF THE EQUIPMENT.
47. THE POSITION OF THE EQUIPMENT.
48. THE POSITION OF THE EQUIPMENT.
49. THE POSITION OF THE EQUIPMENT.
50. THE POSITION OF THE EQUIPMENT.
51. THE POSITION OF THE EQUIPMENT.
52. THE POSITION OF THE EQUIPMENT.
53. THE POSITION OF THE EQUIPMENT.
54. THE POSITION OF THE EQUIPMENT.
55. THE POSITION OF THE EQUIPMENT.
56. THE POSITION OF THE EQUIPMENT.
57. THE POSITION OF THE EQUIPMENT.
58. THE POSITION OF THE EQUIPMENT.
59. THE POSITION OF THE EQUIPMENT.
60. THE POSITION OF THE EQUIPMENT.
61. THE POSITION OF THE EQUIPMENT.
62. THE POSITION OF THE EQUIPMENT.
63. THE POSITION OF THE EQUIPMENT.
64. THE POSITION OF THE EQUIPMENT.
65. THE POSITION OF THE EQUIPMENT.
66. THE POSITION OF THE EQUIPMENT.
67. THE POSITION OF THE EQUIPMENT.
68. THE POSITION OF THE EQUIPMENT.
69. THE POSITION OF THE EQUIPMENT.
70. THE POSITION OF THE EQUIPMENT.
71. THE POSITION OF THE EQUIPMENT.
72. THE POSITION OF THE EQUIPMENT.
73. THE POSITION OF THE EQUIPMENT.
74. THE POSITION OF THE EQUIPMENT.
75. THE POSITION OF THE EQUIPMENT.
76. THE POSITION OF THE EQUIPMENT.
77. THE POSITION OF THE EQUIPMENT.
78. THE POSITION OF THE EQUIPMENT.
79. THE POSITION OF THE EQUIPMENT.
80. THE POSITION OF THE EQUIPMENT.
81. THE POSITION OF THE EQUIPMENT.
82. THE POSITION OF THE EQUIPMENT.
83. THE POSITION OF THE EQUIPMENT.
84. THE POSITION OF THE EQUIPMENT.
85. THE POSITION OF THE EQUIPMENT.
86. THE POSITION OF THE EQUIPMENT.
87. THE POSITION OF THE EQUIPMENT.
88. THE POSITION OF THE EQUIPMENT.
89. THE POSITION OF THE EQUIPMENT.
90. THE POSITION OF THE EQUIPMENT.
91. THE POSITION OF THE EQUIPMENT.
92. THE POSITION OF THE EQUIPMENT.
93. THE POSITION OF THE EQUIPMENT.
94. THE POSITION OF THE EQUIPMENT.
95. THE POSITION OF THE EQUIPMENT.
96. THE POSITION OF THE EQUIPMENT.
97. THE POSITION OF THE EQUIPMENT.
98. THE POSITION OF THE EQUIPMENT.
99. THE POSITION OF THE EQUIPMENT.
100. THE POSITION OF THE EQUIPMENT.

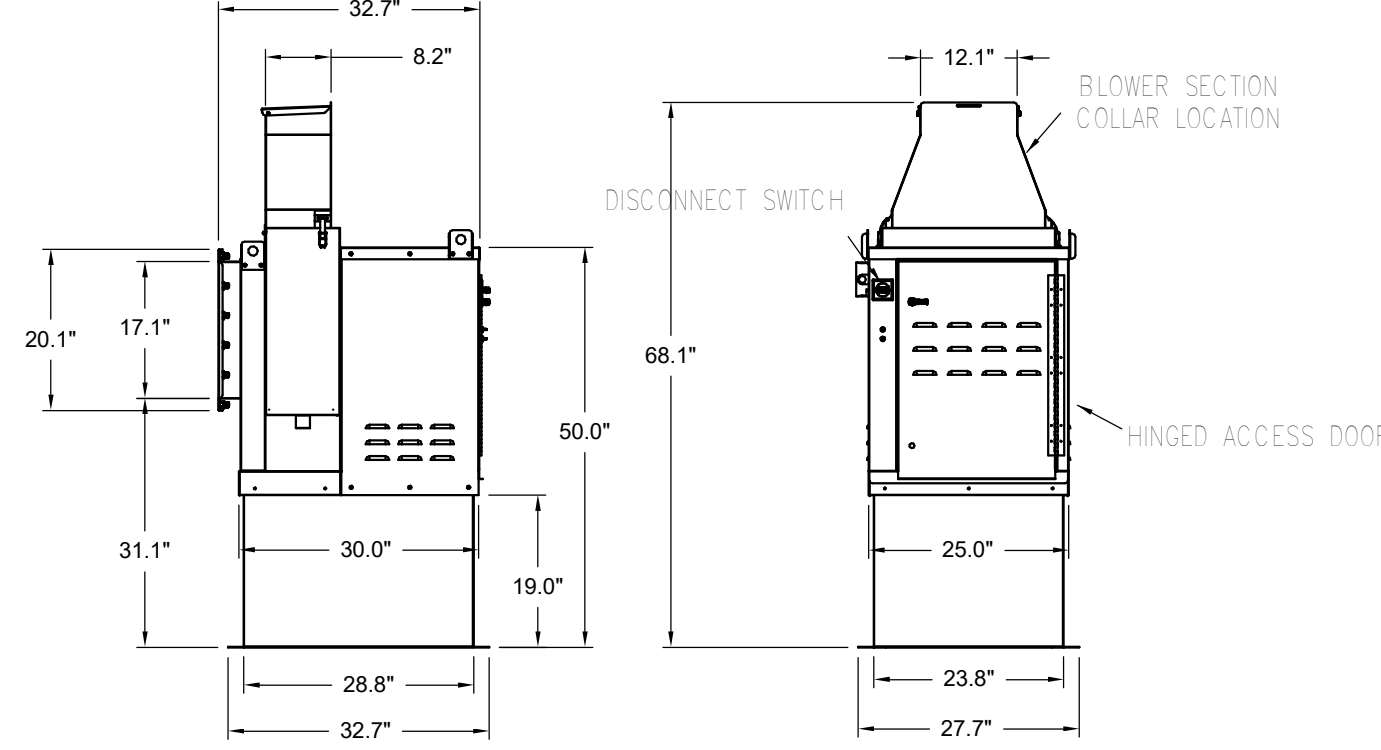


REV.	DATE	BY	DESCRIPTION
1			
2			
3			
4			
5			
6			
7			

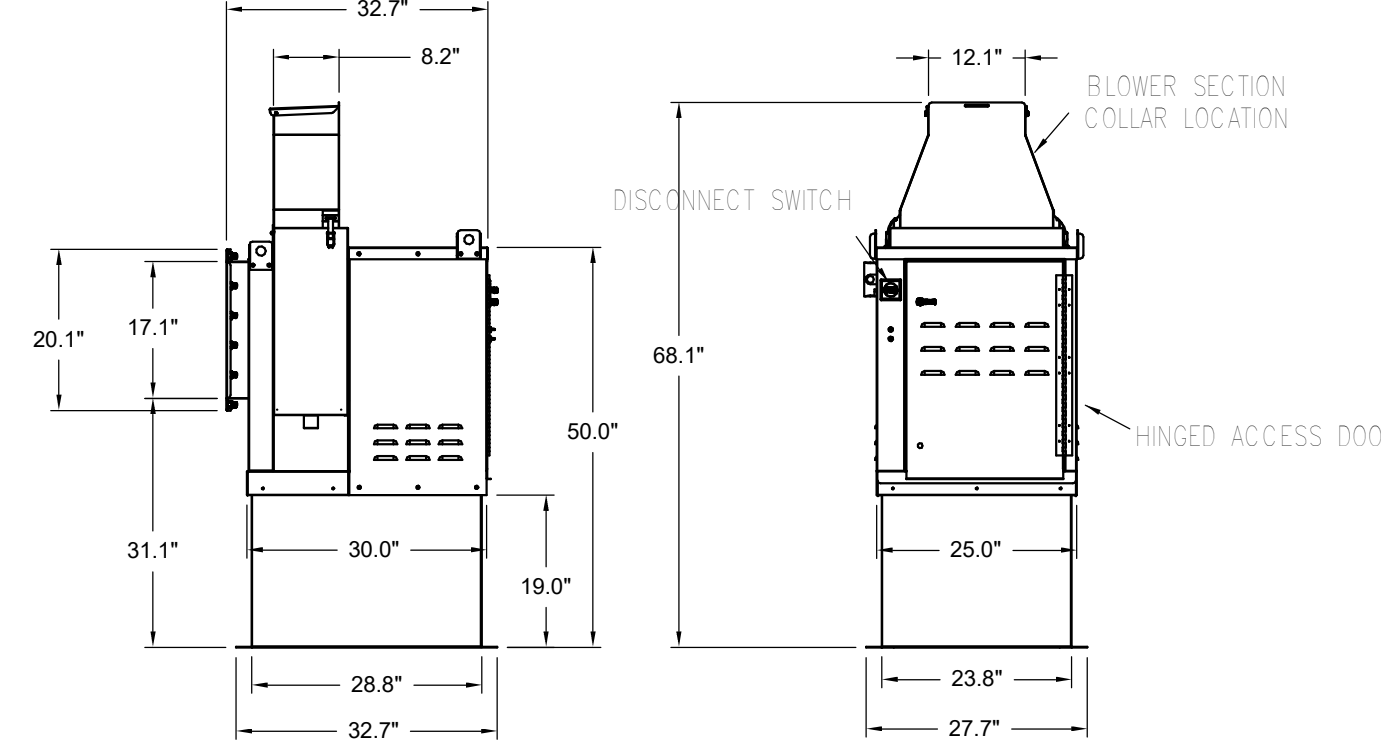
PROJECT: **CHICK-FL-A**
LOCATION: **BRISTOL FSU**
DRAWN BY: **NTS** DATE: **03/25/2025**
SCALE: **NTS**
Halton Dwg:
SN# 05887

FOR REFERENCE ONLY

EF-1

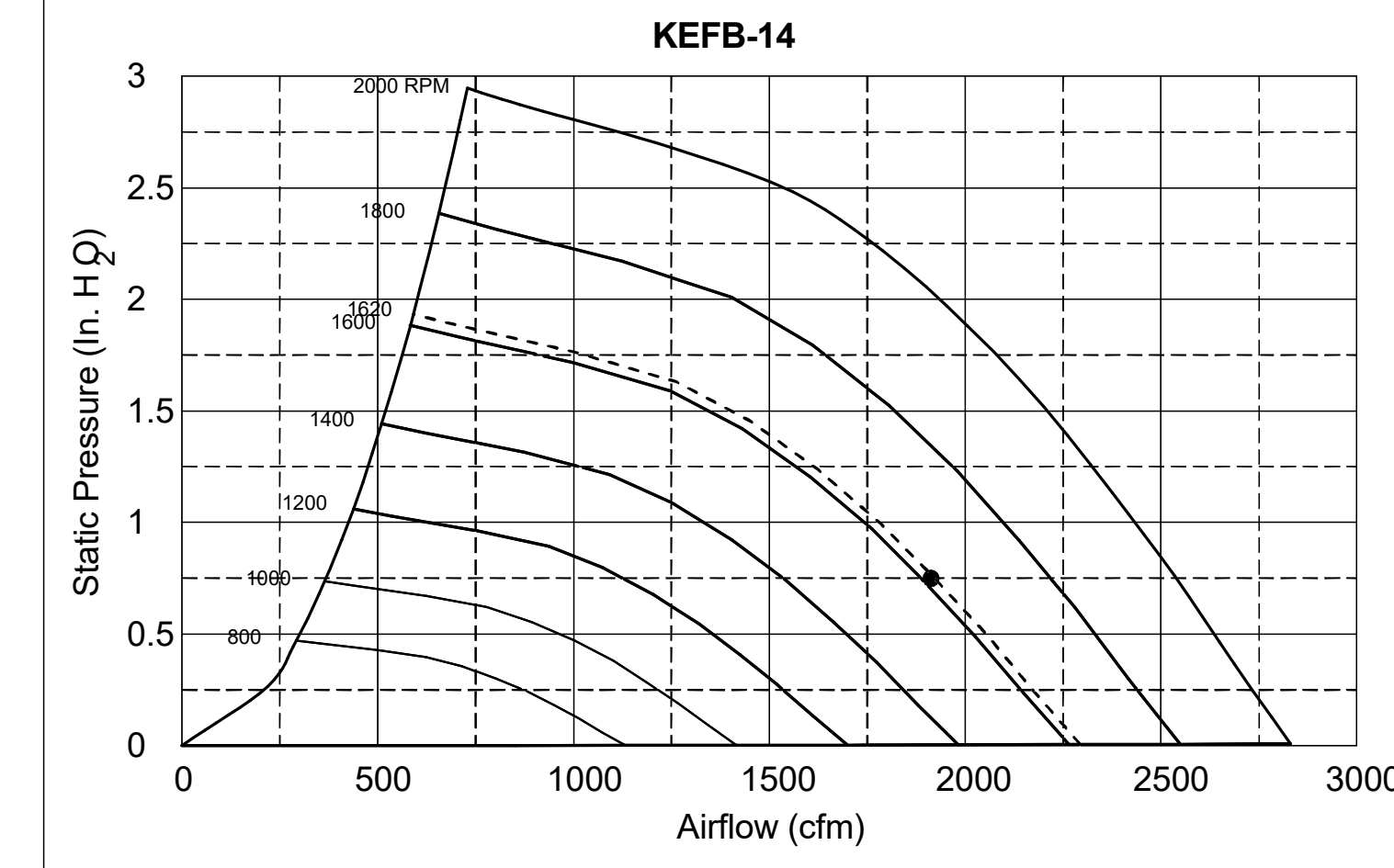


EF-2



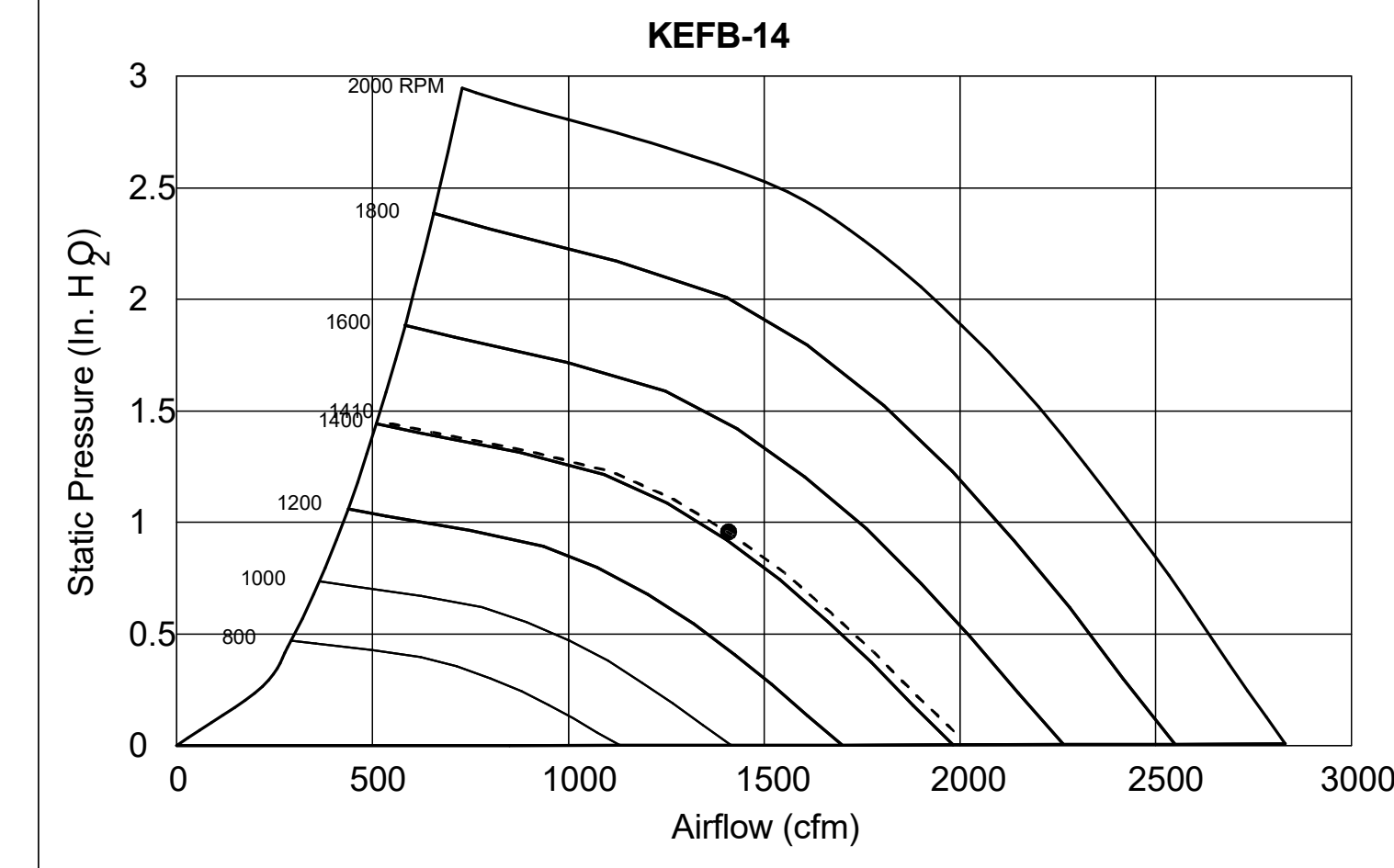
Halton KEFB Exhaust Fan

Job Name	Chick-Fl-A	Location	EF-1	Item No	Qty	Volts/Ph/Amps	115/1/60	Motor HP	0.75	TAB Port, in WC	4
Date	1/26/2023	Model	KEFB-14	Fan RPM	1,747	Fan BHP	0.95	Motor HP	85.3		
Airflow, cfm	1,913	Fan BHP	0.75								
Static Pressure, in WC											



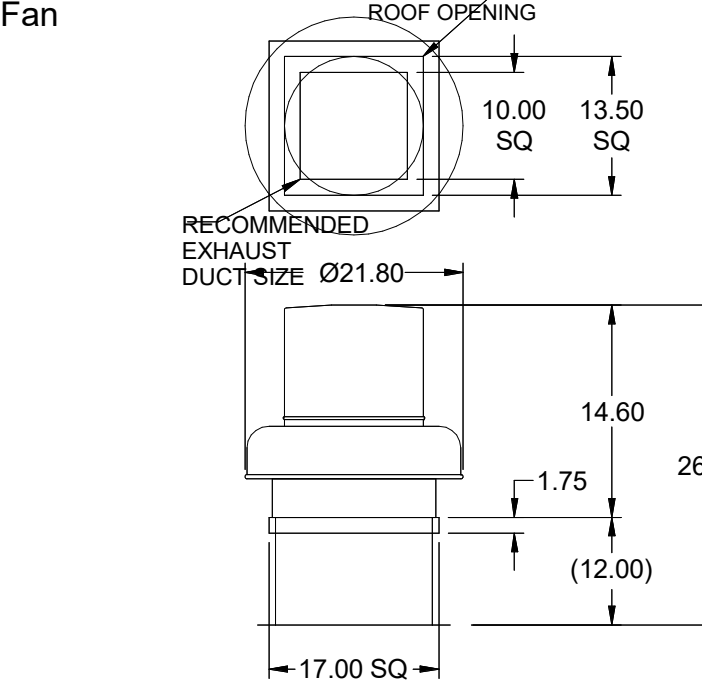
Halton KEFB Exhaust Fan

Job Name	Chick-Fl-A	Location	EF-2	Item No	Qty	Volts/Ph/Amps	115/1/60	Motor HP	0.75	TAB Port, in WC	2.1
Date	1/26/2023	Model	KEFB-14	Fan RPM	1,522	Fan BHP	0.38	Motor HP	81.6		
Airflow, cfm	1,402	Fan BHP	0.95								
Static Pressure, in WC											



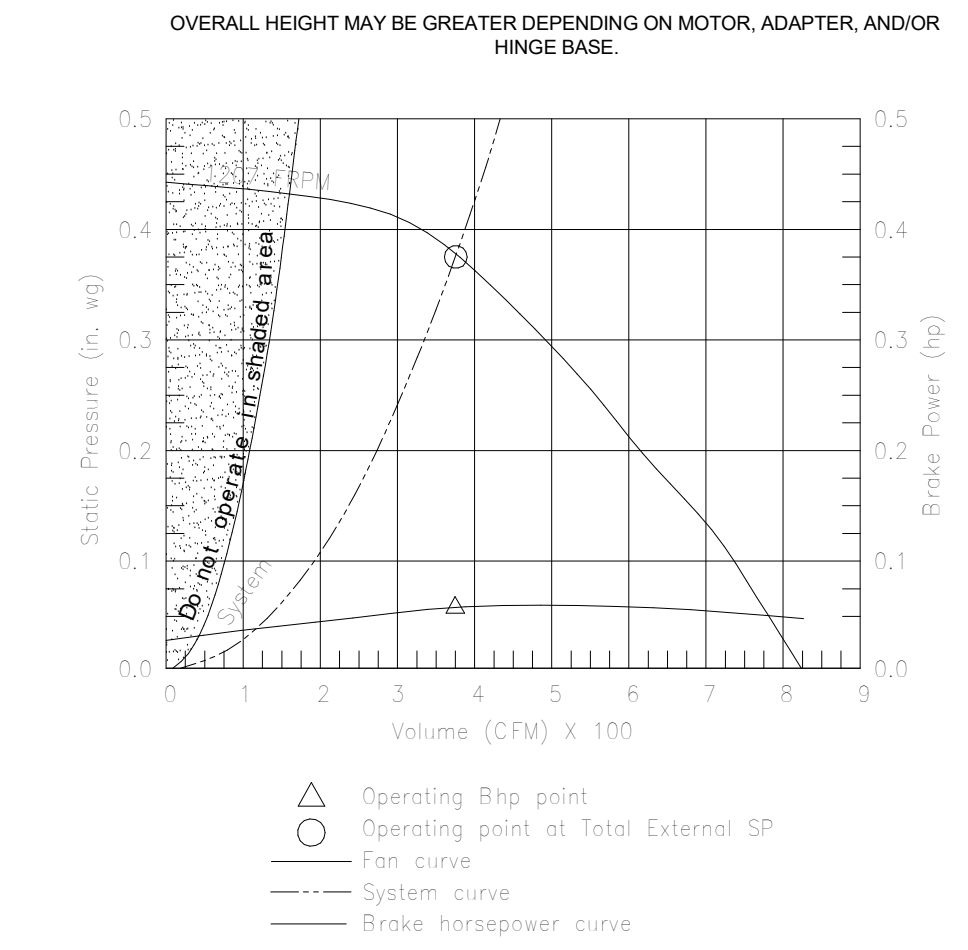
Model: XRED-095-VG
Direct Drive Centrifugal Roof Exhaust Fan

Dimensional	
Quantity	1
Weight w/o Acc's (lb)	28
Weight w/ Acc's (lb)	35
Weight w/ Acc's and Curb (lb)	49
Standard Curb Cap Size (in.)	17 x 17
Optional Damper (in.)	10 x 10
Roof Opening (in.)	13.5 x 13.5
Performance	
Requested Volume (CFM)	375
Actual Volume (CFM)	375
Total External SP (in. wg)	0.375
Fan RPM	1207
Operating Power (hp)	0.05
Elevation (ft)	23
Airstream Temp (F)	70
Air Density (lb/ft ³)	0.075
Tip Speed (ft/min)	3,437
Static Eff (%)	41
Misc Fan Data	
Fan Eff. Index (FEI)	-
Outlet Velocity (ft/min)	323



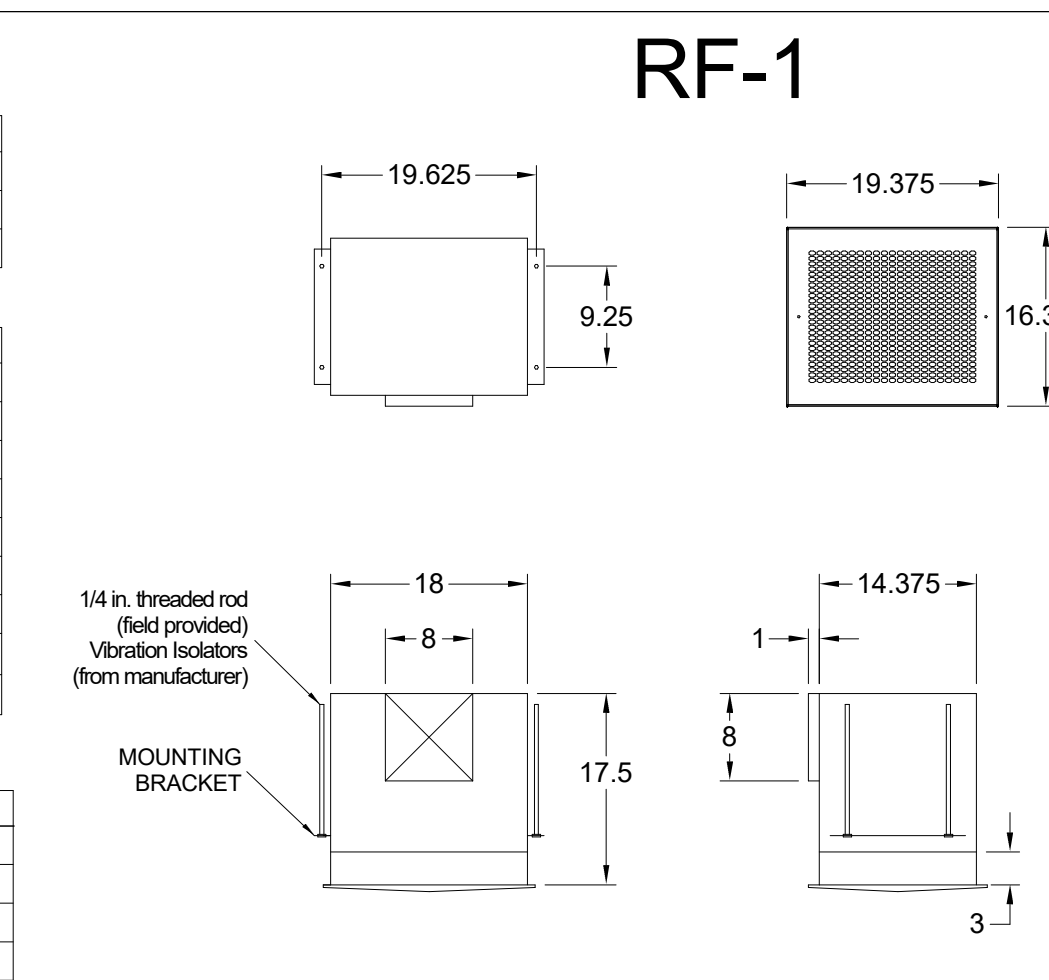
Motor	
Motor Mounted	Yes
Size (in)	18 (if greater)
Voltage/Cycle/Phase	115/60/1
Enclosure	ODP
Motor RPM	1550
Efficiency Rating	Standard
Windings	1

EF-3

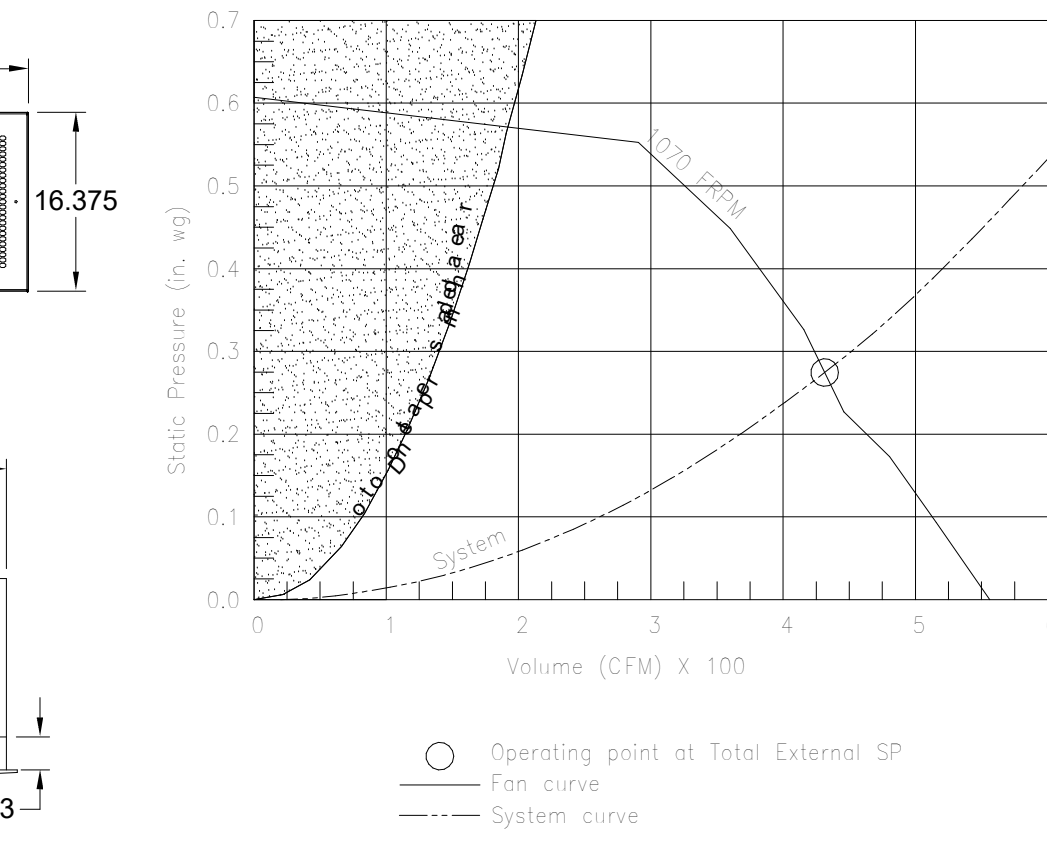


Model: SP-A510-VG

Dimensional	
Quantity	1
Weight w/o Acc's (lb)	31
Weight w/ Acc's (lb)	40
Performance	
Requested Volume (CFM)	450
Actual Volume (CFM)	431
Total External SP (in. wg)	0.275
Fan RPM	1070
* FLA (A)	3.3
Elevation (ft)	23
Airstream Temp (F)	70
Air Density (lb/ft ³)	0.075
Series	4.5
Motor	
Motor Mounted	Yes
** Input Watts (W)	224
Voltage/Cycle/Phase	115/60/1
Enclosure	ODP

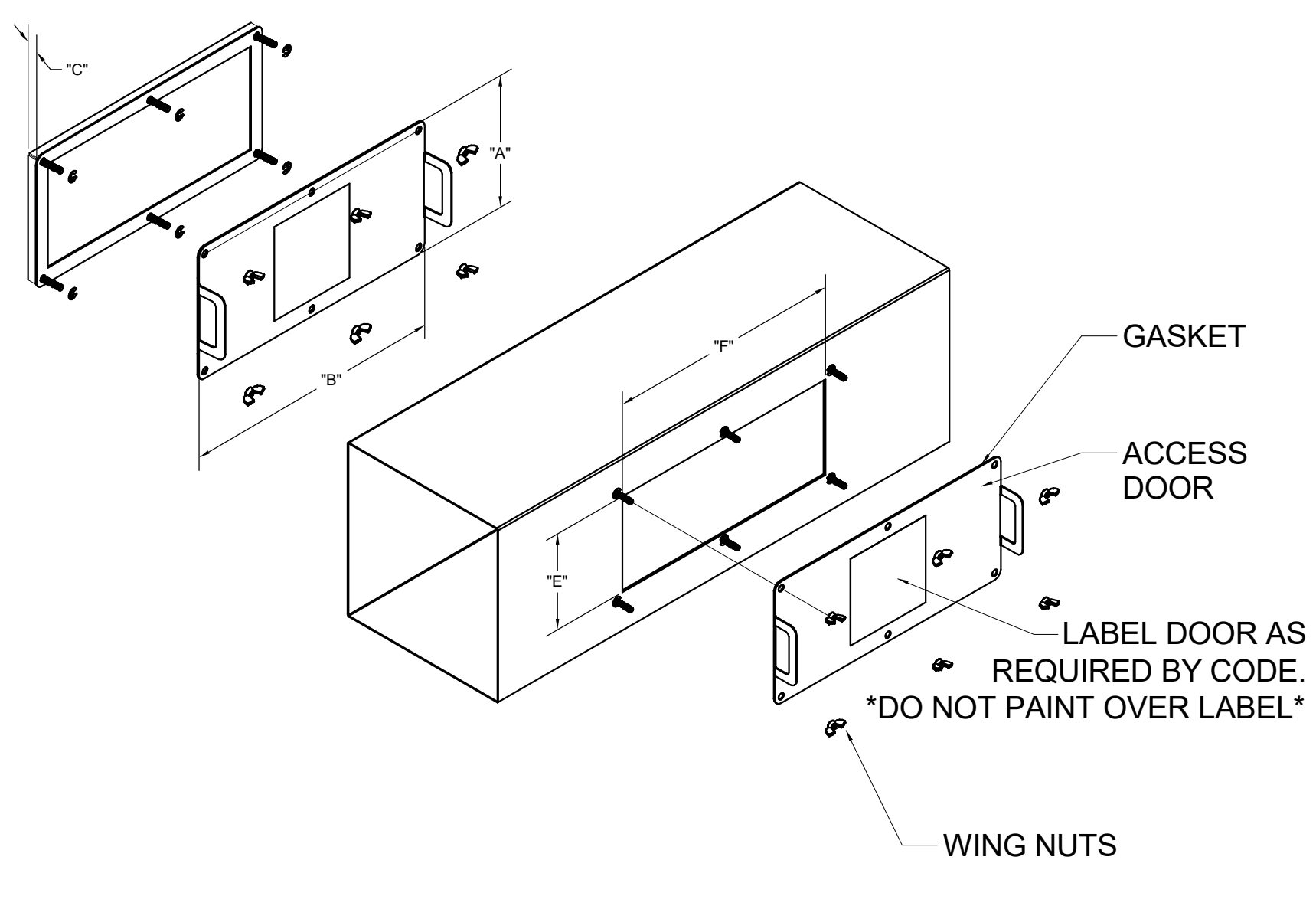


RF-1



MODEL	GREASE ACCESS DOOR SCHEDULE			
	DOOR SIZE "A"	"B"	OPTIONAL FLANGE "C"	OPENING SIZE "E" "F"
KAP0715	7	15	FLAT	5.5 13.5
KAP1015	10	15	1/2	7 12

ACCESS DOORS SHALL BE U.L. 1978 LISTED OR FIELD FABRICATED, REQUIRE NO TOOLS FOR REMOVAL AND MEET THE REQUIREMENTS OF THE CURRENT EDITION OF THE IMC. ACCESS DOOR SHALL BE SECURED WITH THUMB SCREWS. ACCESS DOORS SHALL BE SEALED WITH A MINIMUM 1500 DEGREE GASKET MATERIAL



INSTALL PER MANUFACTURER'S INSTRUCTIONS

TRANSITION	"H"	"W"	"L"
EF-1	14	16	25
EF-2	10	16	17

"W"	"H"	Wo	Ro	Rc	Ri	"A"	"B"
EF-1	8	14	16	12	8	34	17
EF-2	8	10	16	12	8	34	17

Halton Kitchen Exhaust Fan Curb Insulated Duct Curb

Kitchen Exhaust Fan Roof Curb Standard Construction Features:
- Roof Curb fits between the building roof and the fan mounted directly to the roof support structure - Constructed of 18 ga aluminum steel - Straight Slided without a cast - 2 in. mounting flange - Height is 22 in.

Insulated Duct Curb Standard Construction Features:
- Duct Curb fits between the building roof and the fan mounted directly to the roof support structure - Constructed of 18 ga aluminum steel - Straight Slided without a cast - 2 in. mounting flange - Height is 12 in. - 16 ga. cap

Model: GPI
For Model: XRED-090-VG
Curb & Damper Tray

Accessories				
Material	Security Bars	Liner	Insulation (in.)	Insulation R Value
Galvanized	No	No	1	R4.3

General						
Tag	Qty	Model	Sizing Method	Understating (in.)	Weight (lb)	Shipped Assembled
EF-3	1	GPI-17	Nominal	1.5	14	Yes

Dimensions						
Curb Height (in.)	Nominal Outside Width (in.)	Nominal Outside Length (in.)	Actual Outside Width (in.)	Actual Outside Length (in.)	Actual Inside Width (in.)	Actual Inside Length (in.)
12	17	17	15.5	15.5	12	12

PROJECT: **CHICK-FL-A**

LOCATION: **BRISTOL FSU**

DRAWN BY: **NTS** DATE: **03/25/2025**

SCALE: **NTS**

Halton Dwg: **Halton**

Sheet: **MH-1.4**

MAIL APPROVED DRAWINGS TO APPROPRIATE FACTORY BELOW WEBSITE: WWW.HALTONCOMPANY.COM

HALTON CO. (CANADA)
1021 BREVIK PLACE
MISSISSAUGA, ON L4W 3R7
1-905-624-0301

HALTON CO. (USA)
101 INDUSTRIAL DRIVE
SCOTTSDALE, AZ 85254
1-270-237-5600

REVISION DESCRIPTION

REV.	DATE	BY
1		
2		
3		
4		
5		
6		
7		

NOTE: DRAWINGS MUST BE CHECKED, SEVERAL TIMES BEFORE TO THE APPROPRIATE FACTORY. PLEASE VERIFYING THE FOLLOWING:
1. ALL DIMENSIONAL INFORMATION, MOUNTING POSITIONS AND CLEARANCES.
2. EQUIPMENT TYPE OF COOKING EQUIPMENT.
3. MATERIALS AND FABRICATIONS.
4. EQUIPMENT POSITION MAY AFFECT EXHAUST AIRFLOW. HALTON MUST BE NOTIFIED IF THESE CHANGES OCCUR. A RECALCULATION, EXHAUST AIRFLOW MAY BE REQUIRED.
 REVISE AND RESUBMIT
 APPROVED FOR FABRICATION
 WITH NO CHANGES
 WITH CHANGES AS NOTED

APPROVED BY: _____

