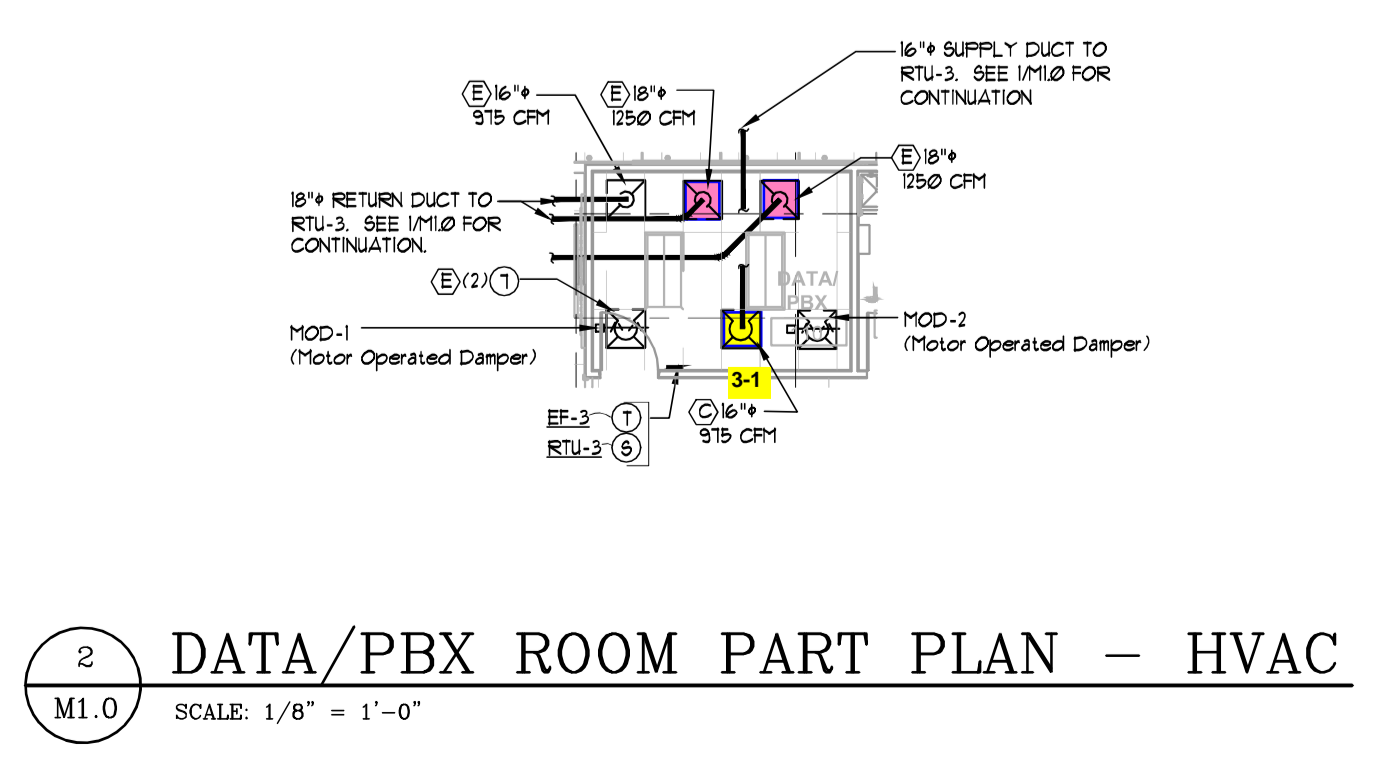


1 FLOOR PLAN - HVAC
 SCALE: 1/8" = 1'-0"

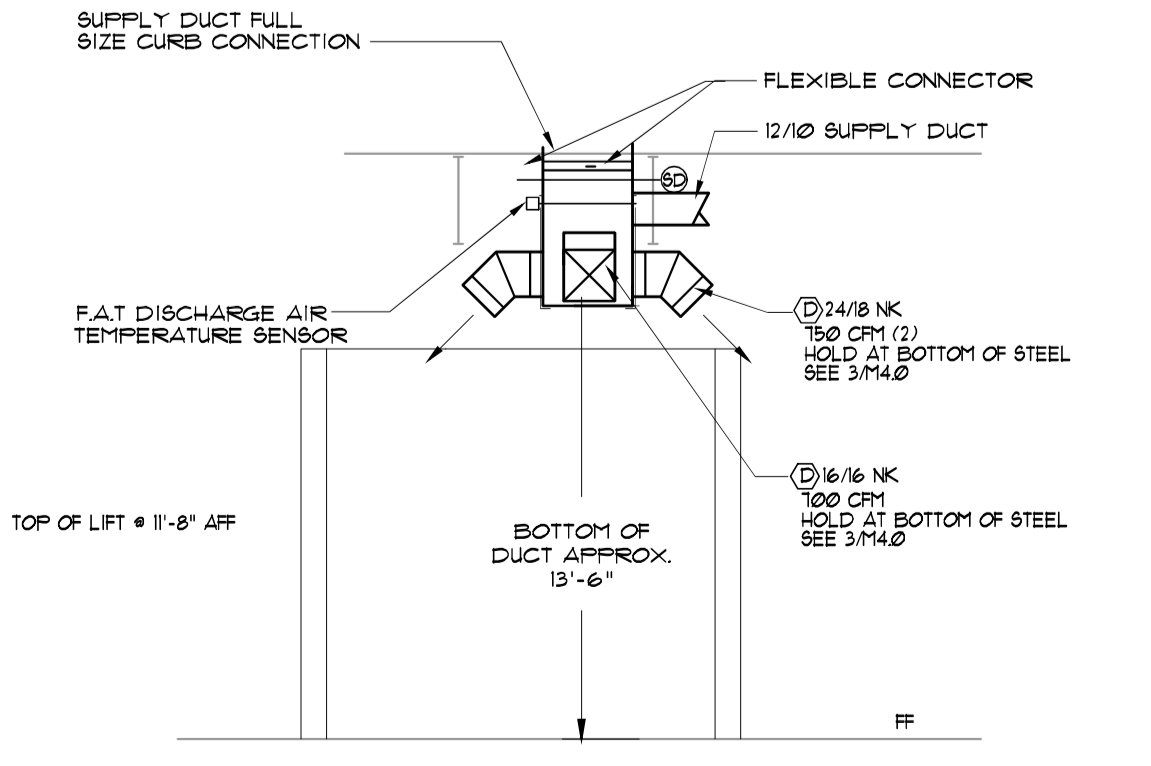
- KEYED NOTES:**
- 1/4" TRANSFER OPENING IN WALL HIGH AT BOTTOM OF BAR JOISTS. COVER WITH TYPE 'F' GRILLE ON SERVICE SIDE OF WALL.
 - PLENUM FULL-SIZE OF UNIT CONNECTION.
 - 1/4" TRANSFER OPENING IN WALL APPROX 12" ABOVE CEILING. COVER WITH TYPE 'F' GRILLE ON JANITOR SIDE OF WALL.
 - 1/4" TRANSFER OPENING IN WALL * 12" ABOVE CEILING. COVER OPENING WITH 1/2" W/2" WELDED WIRE MESH SCREEN.
 - HOLD DUCT TIGHT TO BOTTOM OF STRUCTURE.
 - 6" X 6" FLEX UP THRU ROOF. SEE 1/4" FOR CONTINUATION. SEE DETAIL 1/4" B.
 - 22-02 20" V. MOTOR OPERATED DAMPER IN PLENUM. INTERLOCK WITH EF-3 NORMALLY CLOSED, DRIVE OPEN.
 - 6" X 6" EXHAUST DUCT UP THRU ROOF TO ROOF CAP. SEE 1/4" B FOR CONTINUATION.
 - TAMPER RESISTANT THERMOSTAT. BOTTOM * 12" AFF.
 - SLEEVE DUCT AT WALL PENETRATION.
 - NON ADJUSTABLE THERMOSTAT * 48" AFF.
 - DUCT TO BE INTERNALLY LINED. SEE SPEC SECTION 9050.
 - 1/4" TRANSFER OPENING IN WALL APPROX 12" AFF. COVER WITH TYPE 'F' GRILLE ON BOTH SIDES OF WALL.
 - HOLD DUCT HIGH BETWEEN BAR JOISTS.
 - COVER OPEN SIDE OF LOUVER WITH 1/2" W/2" WELDED WIRE MESH AND TRAY.
 - EXHAUST AIR DISCHARGE INTO PLENUM.
 - BLADES NEAR WALL SHALL BE POSITIONED VERTICALLY STRAIGHT DOWN. BLADES NEAR DRIVE AISLE SHALL BE AT 45° SPLIT POSITIONING OF BLADES EVENLY.

SERVICE AREA AIR BALANCE		
ITEM	OUTSIDE AIR	EXHAUST
RTU-3	2500	2000
EF-1		2000
EF-6		300
TOTAL	2500	2300

- 1 FAN ON CONTINUOUS DURING OCCUPIED
- 105 CFM MINIMUM EXHAUST REQUIRED * 15 CFM/SP. PER 2000 SQ. FT. TABLE 403.3 FOR REPAIR GARAGES. SHOP NET AREA APPROX 900 SF.
- MINIMUM CFM/SP EXHAUST 500 CFM * 6" AFF FOR EXHAUSTION TO CLASS II DIVISION II CONTINUATION.

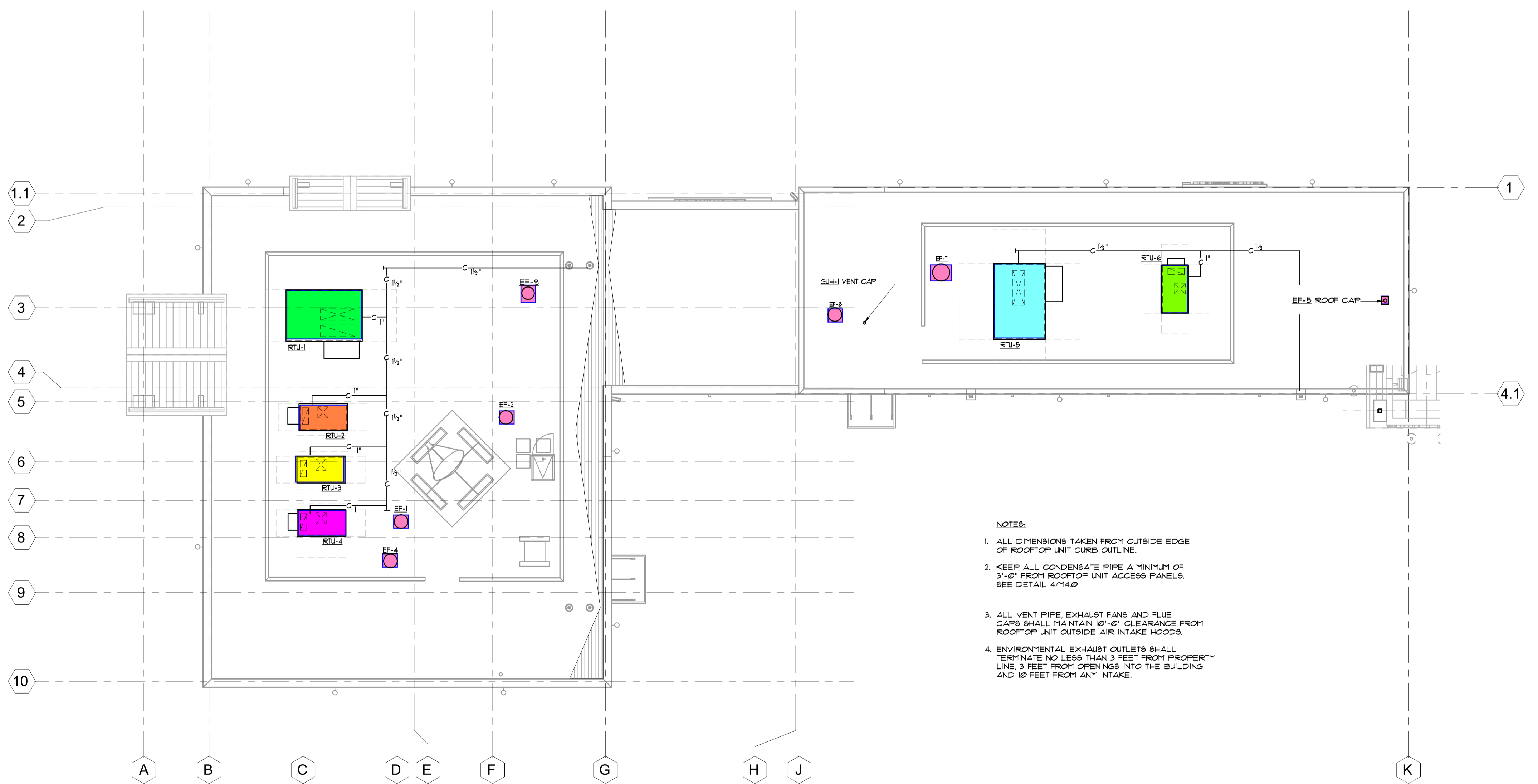


2 DATA/PBX ROOM PART PLAN - HVAC
 SCALE: 1/8" = 1'-0"



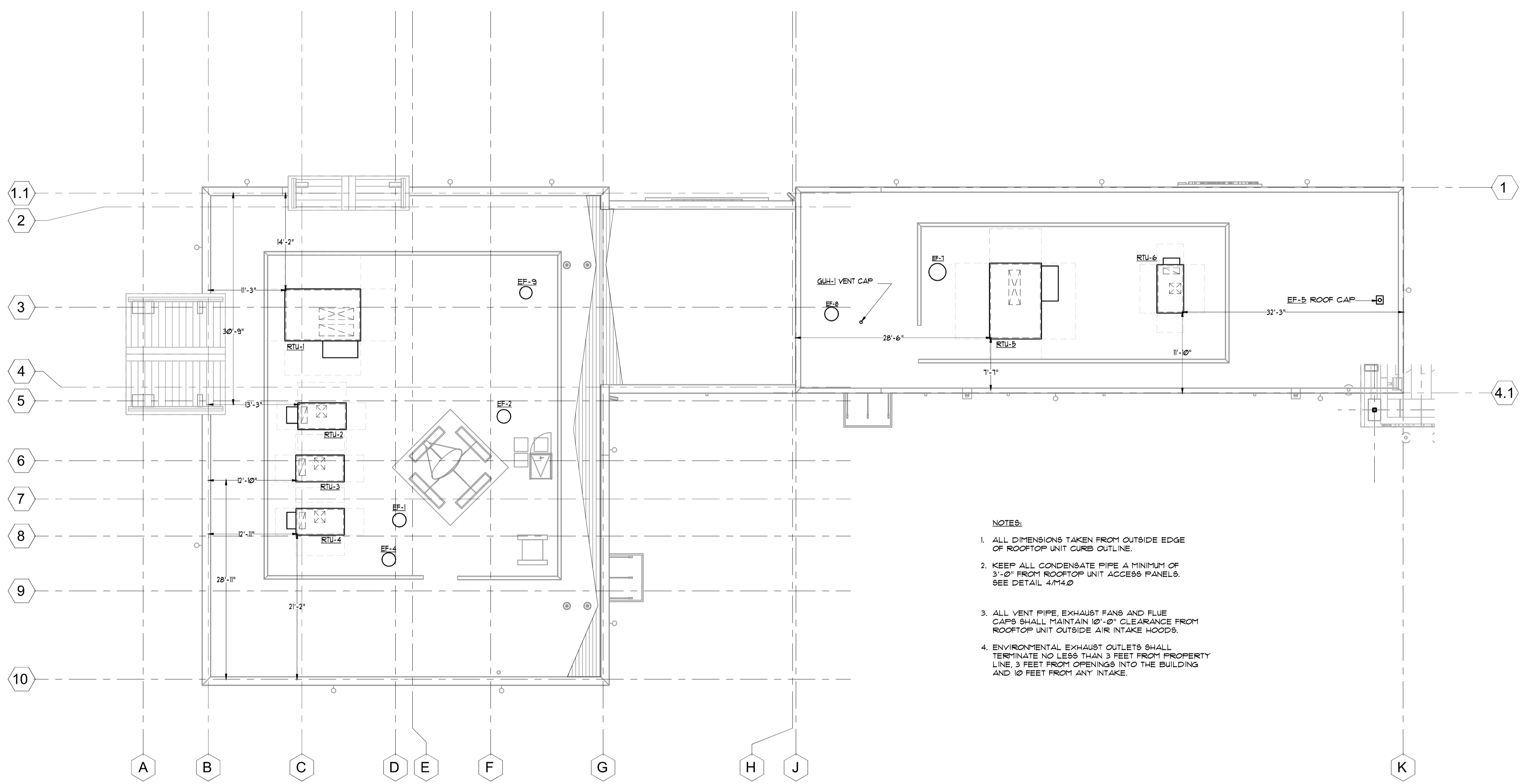
- NOTE:**
- SUPPORT DUCT ON BOTH SIDES OF FLEX CONNECTOR INDEPENDENT OF EACH OTHER (TYPICAL)
 - DUCT HANGAR STRAPS SHALL EXTEND TO BOTTOM OF PLENUM SECURE TO BAR JOISTS.

3 ELEVATION - HVAC
 SCALE: 1/8" = 1'-0"

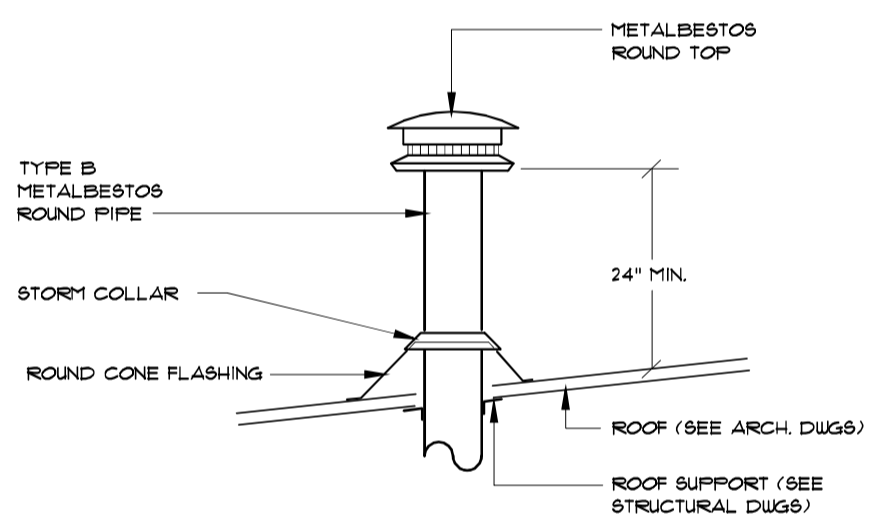


- NOTES:
1. ALL DIMENSIONS TAKEN FROM OUTSIDE EDGE OF ROOFTOP UNIT CURB OUTLINE.
 2. KEEP ALL CONDENSATE PIPE A MINIMUM OF 3'-0" FROM ROOFTOP UNIT ACCESS PANELS. SEE DETAIL 41142.
 3. ALL VENT PIPE, EXHAUST FANS AND FLUE CAPS SHALL MAINTAIN 10'-0" CLEARANCE FROM ROOFTOP UNIT OUTSIDE AIR INTAKE HOODS.
 4. ENVIRONMENTAL EXHAUST OUTLETS SHALL TERMINATE NO LESS THAN 3 FEET FROM PROPERTY LINE, 3 FEET FROM OPENINGS INTO THE BUILDING AND 10 FEET FROM ANY INTAKE.

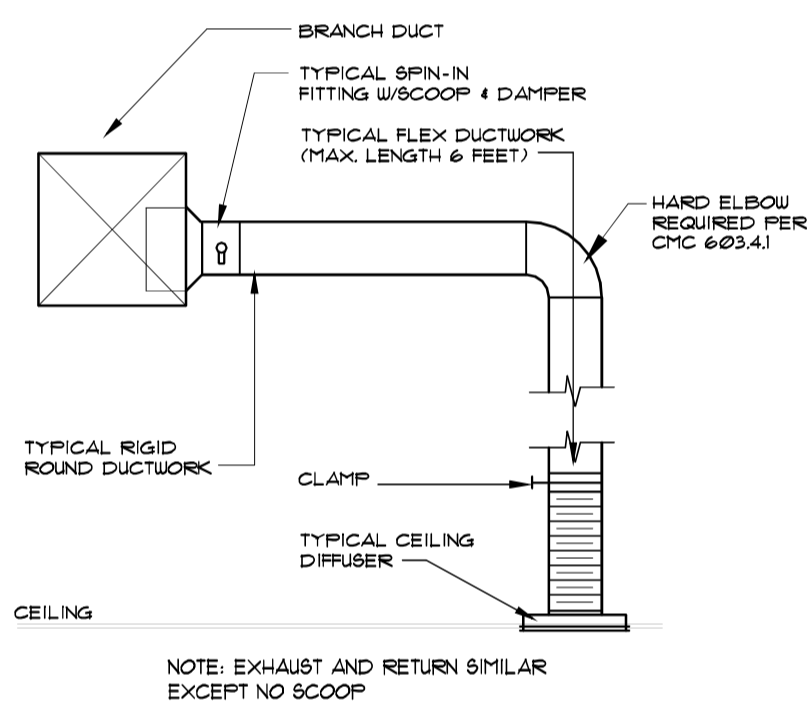
1 ROOF PLAN - HVAC
 M2.0 SCALE: 1/8" = 1'-0"



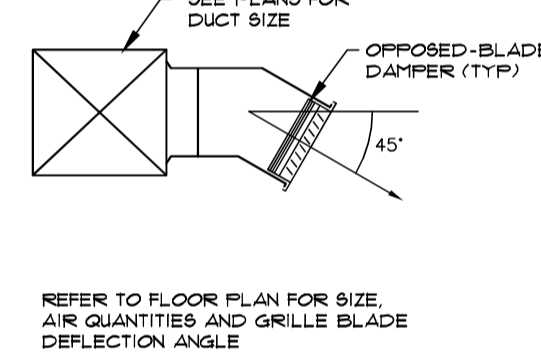
1 STRUCTURAL COORDINATION PLAN
 M2.1 SCALE: 1/8" = 1'-0"



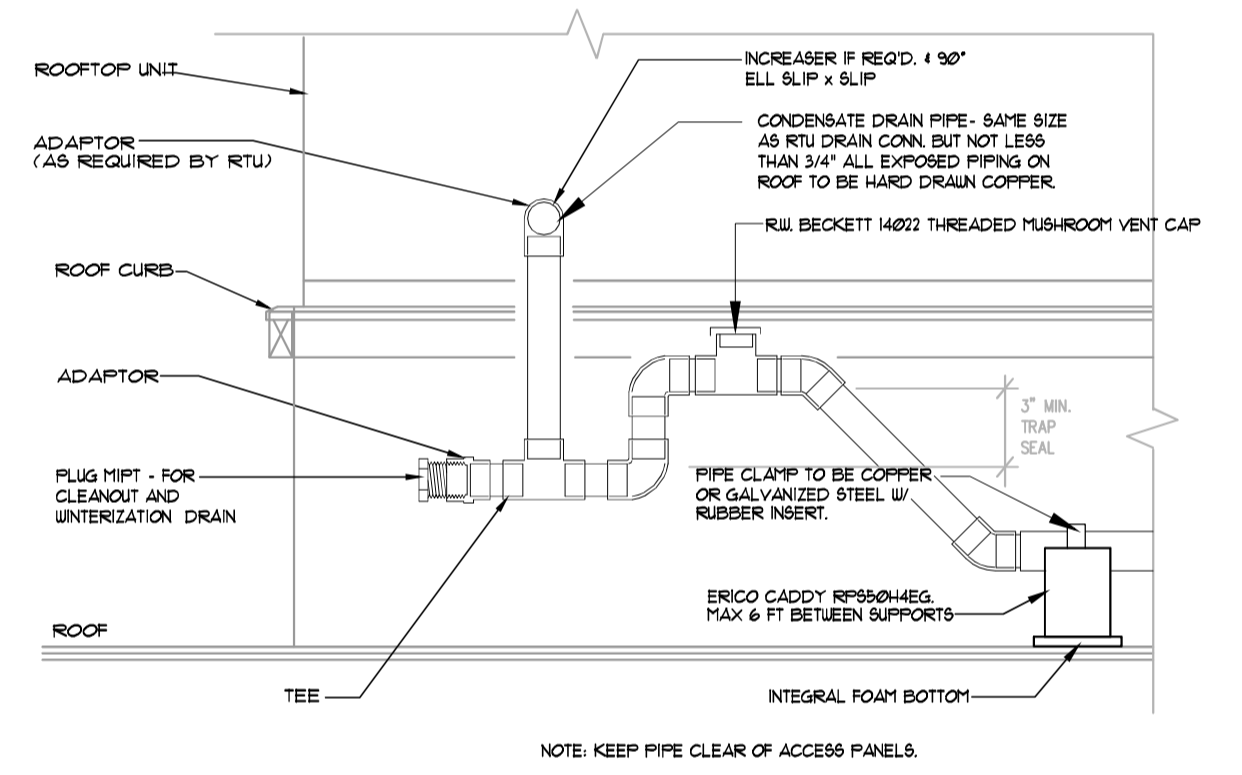
1 FLUE THRU THE ROOF
M4.0 SCALE: NONE



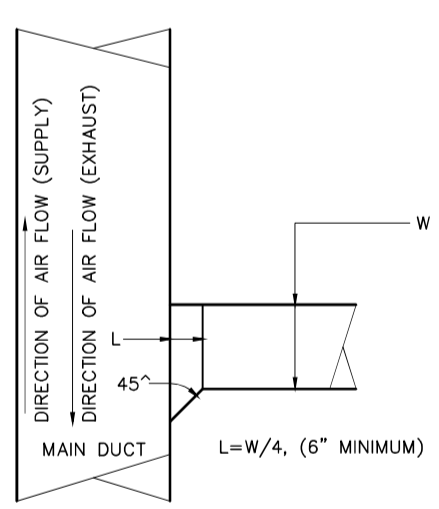
2 SPIN IN FITTING
M4.0 SCALE: NONE



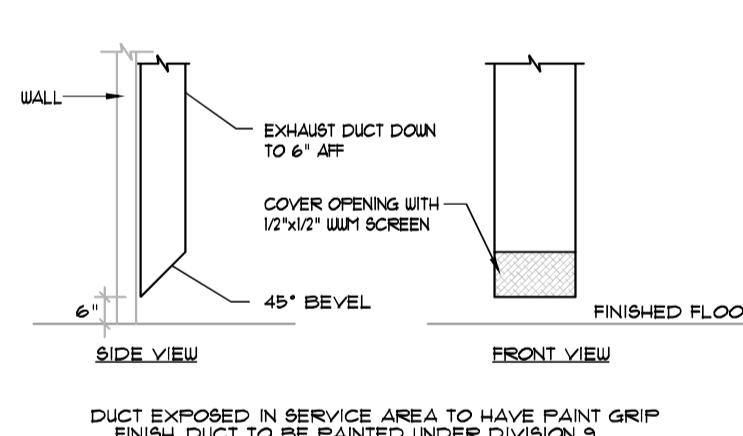
3 SUPPLY REGISTER
M4.0 SCALE: NONE



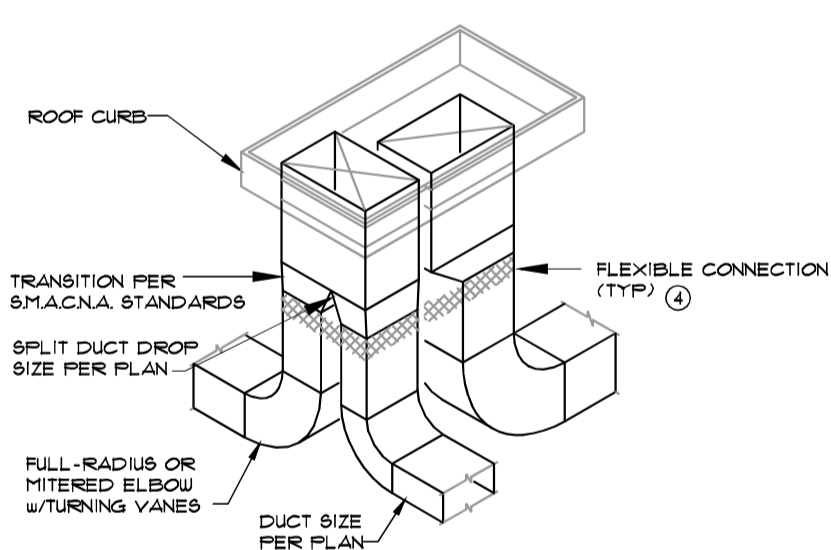
4 RTU CONDENSATE DRAIN DETAIL
M4.0 NOT TO SCALE



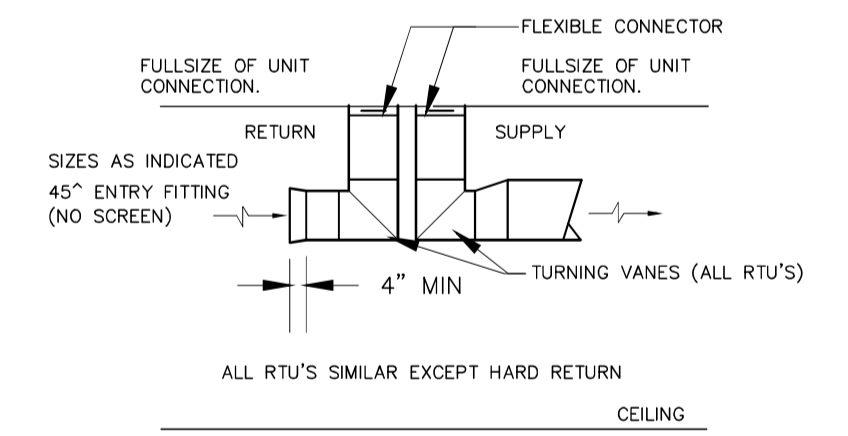
5 45 DEGREE TAKE OFF
M4.0 SCALE: NONE



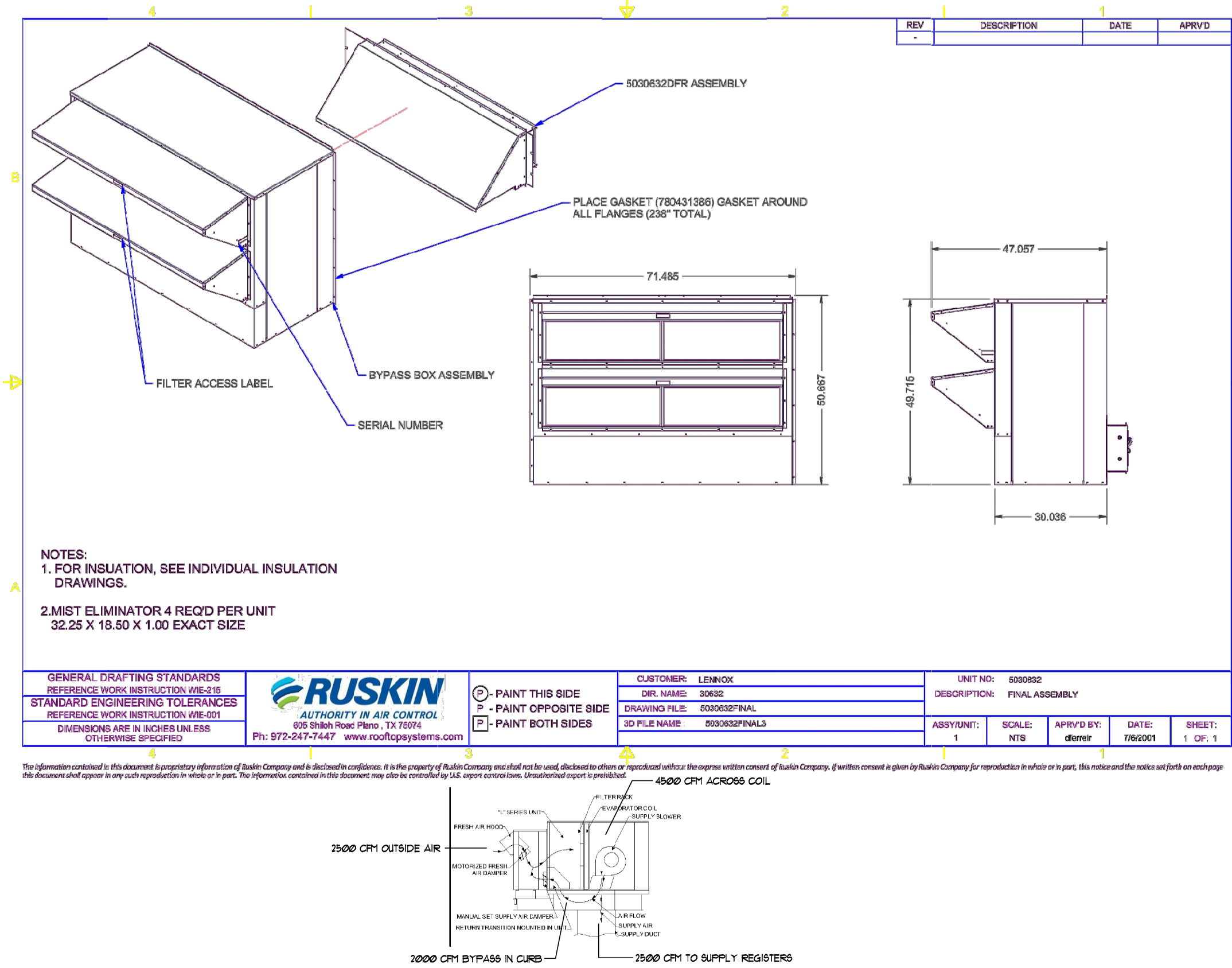
6 EXHAUST DUCT
M4.0 SCALE: NONE



7 DUCT DROP - DETAIL
M4.0 SCALE: NONE



8 SECTION - HVAC
M4.0 SCALE: N.T.S.



10 MIXING BOX DETAIL
M4.0 NOT TO SCALE

11 BYPASS CURB DETAIL
M4.0 NOT TO SCALE