

*ROD AND NUTS TO BE SUPPLIED BY INSTALLING CONTRACTOR
HANGING ANGLE IS PROVIDED BY FACTORY

HANGING ANGLE DETAILS

HOOD STYLE / MODEL	450 DEGREES cfm/ft.	600 DEGREES cfm/ft.	700 DEGREES cfm/ft.
CANOPY ND-2	150	200	250
CANOPY ND-2 W/ END PANELS	105	140	175
SLOPED SND-2	228	294	-
ISLAND ND-2WI	269	300	350
ISLAND ND-2I	346	422	475

ETL HOOD LISTING DETAIL

EXHAUST CFM = LENGTH OF HOOD X CFM/LIN.FT. (LOAD)
SUPPLY CFM = EXHAUST CFM X PERCENTAGE REQUIRED
TOTAL DUCT AREA (sq. in.) = 144 X CFM / (VELOCITY)
DUCT LENGTH = TOTAL DUCT AREA / DUCT WIDTH

*CAPTIVEAIRE VENTILATOR DUCT SIZES ARE CALCULATED USING AN EXHAUST VELOCITY OF 1500-1800 FPM AND A SUPPLY VELOCITY OF 1000 FPM.

CALCULATIONS UTILIZED

CAPTIVE-AIRE HOODS BUILT IN COMPLIANCE WITH:



BUILDING CODES

CAPTIVE-AIRE HOODS HAVE OPTIONAL CLEARANCE REDUCTION SYSTEMS AVAILABLE AS FOLLOWS:

MATERIAL	CLEARANCE REDUCTION SYSTEM
NON-COMBUSTIBLE	NONE REQUIRED
LIMITED-COMBUSTIBLE	3" UNINSULATED STANDOFF
COMBUSTIBLE	1" INSULATED STANDOFF

CLEARANCE TO COMBUSTIBLES

INSTALLATION

- ALL ELECTRICAL "FIELD" CONNECTIONS AND RELATED INTERCONNECTIONS BY ELECTRICAL CONTRACTORS.
- ALL PLUMBING "FIELD" CONNECTIONS AND RELATED INTERCONNECTIONS BY PLUMBING CONTRACTORS.
- HANGING BRACKETS LOCATED AND WELDED AS SHOWN ON PLANS. ALL OTHER HANGER MATERIALS PROVIDED BY INSTALLING CONTRACTORS.
- ALL CONNECTIONS FROM CAPTIVEAIRE HOOD PER MECHANICAL CONTRACTOR'S PLANS.
- COOKING EQUIPMENT TO SHUT OFF IN EVENT OF FIRE.
- EXHAUST FANS TO TURN ON IN EVENT OF FIRE.
- ALL LIGHT FIXTURES SHOWN INSTALLED BY CAPTIVEAIRE ARE FACTORY PREWIRED. INTERCONNECTIONS BETWEEN HOODS AND TO SWITCHES ARE BY ELECTRICAL CONTRACTOR.
- LAMPS FOR LIGHT FIXTURES BY INSTALLING CONTRACTORS.
- SEISMIC RESTRAINTS ARE RESPONSIBILITY OF INSTALLING CONTRACTOR.
- INSTALLING CONTRACTORS ASSUME ALL RELATED RESPONSIBILITY FOR VERIFICATION OF DIMENSIONAL DATA CONTAINED ON THESE DOCUMENTS FOR ACCURACY, INTEGRATION, AND ADMINISTRATION OF CODE REQUIREMENTS IN EFFECT PRIOR TO ANY RELEASE FOR PRODUCTION OF EQUIPMENT SHOWN.

BALANCE

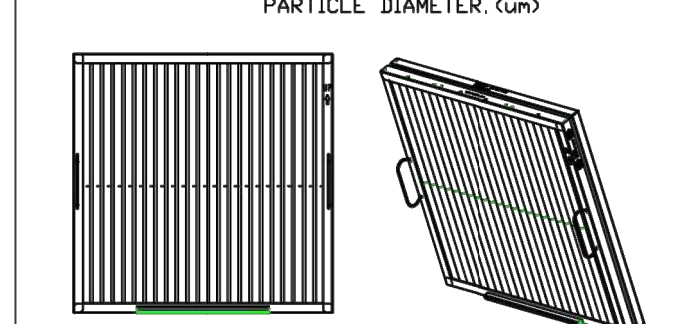
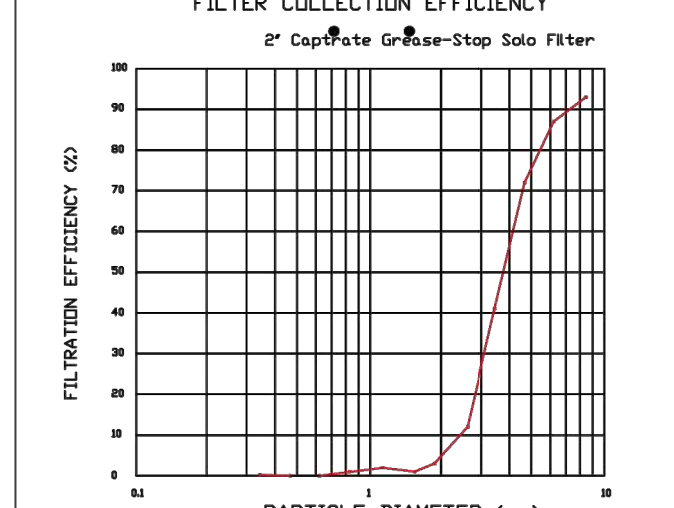
- KITCHEN HOODS MUST BE BALANCED WITH KITCHEN.
- KITCHEN SHALL BE NEGATIVE WITH RESPECT TO DINING AREA.
- RESTAURANT SHALL BE POSITIVE WITH RESPECT TO AMBIENT PRESSURE.

ADDITIONAL

- WRITTEN HOOD DIMENSIONS HAVE PRECEDENCE OVER SCALE.
- SIGNED AND APPROVED COPIES OF THIS DOCUMENT MUST BE RECEIVED BY THE FACTORY PRIOR TO COMMENCEMENT OF FABRICATION.

GENERAL NOTES

FILTER COLLECTION EFFICIENCY



CaptiveAir Grease-Stop Solo Filter
ETL Listed Grease Extracting Filter
Made From 430 Stainless Steel

FILTER DETAIL

FOR QUESTIONS, CALL THE
Maryland Office
REGION 32
PHONE: (800) 988-0881
EMAIL: arturo.meza@captiveaire.com

PATENT NUMBERS
AC-PSP (UNITED STATES) - US PATENT 7963830 B2.
AC-PSP WALL (CANADA) - CA PATENT 2820509.
AC-PSP ISLAND (CANADA) - CA PATENT 2520330.

HOOD INFORMATION - JOB#6539093

HOOD NO	TAG	MODEL	MANUFACTURER	LENGTH	MAX COOKING TEMP	TYPE	APPLIANCE DUTY	DESIGN CFM/FT	TOTAL EXH CFM	EXHAUST PLENUM RISER(S)				MUA CFM	AC CFM	HOOD CONSTRUCTION	HOOD CONFIG				
										WIDTH	LENG	HEIGHT	DIA				CFM	VEL	SP	END TO END	ROW
1	33	6030 ND-2-ACSP-F	CAPTIVEAIRE	10' 7"	600 DEG	I	HEAVY	225	2381			4'	16'	2381	1705	-0.825'	1976	776	430 SS WHERE EXPOSED	ALONE	ALONE

HOOD INFORMATION

HOOD NO	TAG	FILTER(S)				LIGHT(S)				UTILITY CABINET(S)				FIRE SYSTEM PIPING	HOOD HANGING WEIGHT		
		TYPE	QTY	HEIGHT	LENGTH	EFFICIENCY @ 7 MICRONS	QTY	TYPE	WIRE GUARD	LOCATION	SIZE	FIRE SYSTEM TYPE	SIZE			ELECTRICAL MODEL #	SWITCHES QUANTITY
1	33	CAPTRATE SOLID FILTER	7	20"	16"	85% SEE FILTER SPEC	6	L55 SERIES E26	NO	LEFT	12"x60"x30"	TANK FS	4.0/4.0	DCV-1111	1 LIGHT 1 FAN	YES	1153 LBS

HOOD OPTIONS

HOOD NO	TAG	OPTION
1	33	FIELD WRAPPER 10.00' HIGH FRONT, LEFT. RIGHT END STANDOFF (FINISHED) 1' WIDE 60" LONG INSULATED. LEFT VERTICAL END PANEL 27" TOP WIDTH, 21" BOTTOM WIDTH, 82" HIGH INSULATED 430 SS.

PERFORATED SUPPLY PLENUM(S)

HOOD NO	TAG	POS	LENGTH	WIDTH	HEIGHT	TYPE	RISER(S)			
							WIDTH	LENG	DIA	CFM
1	33	Front	140"	24"	6"	MUA	12"	28"	658	0.165'
						MUA	12"	28"	658	0.165'
						MUA	12"	28"	658	0.165'
						AC	8"	24"	388	0.088'
						AC	8"	24"	388	0.088'

GREASE DUCT & CHIMNEY SPECIFICATIONS:
PROVIDE GREASE DUCT EQUAL TO CAPTIVEAIRE SYSTEMS MODEL "DW" ROUND 20 GAUGE 430 STAINLESS STEEL DUCTWORK. MODEL "DW" IS LISTED TO UL-1978 AND IS INSTALLED USING "V" CLAMP LOCKING CONNECTIONS SEALED WITH 3M FIRE BARRIER 2000 PLUS. MODEL "DW" DOES NOT REQUIRE WELDING PROVIDING IT HAS BEEN INSTALLED PER THE MANUFACTURES INSTALLATION GUIDE.
PROVIDE RATED ACCESS DOORS AT EVERY CHANGE IN DIRECTION AND EVERY 12' ON CENTER. PER MANUFACTURES LISTING MODEL "DW" HORIZONTAL RUNS LESS THAN 75 FT. CAN BE SLOPED 1/16" PER 12", HORIZONTAL RUNS MORE THAN 75 FT. CAN BE SLOPED 3/16" PER 12". DUCT SHOULD BE SLOPED AS MUCH AS POSSIBLE TO REDUCE THE CHANCE OF GREASE ACCUMULATION IN HORIZONTAL RUNS.

IF THE DUCT OR CHIMNEY IS WITHIN 18 INCHES OF COMBUSTIBLE MATERIAL, PROVIDE UL-2221 OR UL-103 HT LISTED DOUBLE WALL GREASE DUCT OR DOUBLE WALL CHIMNEY EQUAL TO CAPTIVEAIRE SYSTEMS MODEL "DW- 2R, 2R TYPE HT, 3R, OR 3Z" ROUND 20 GAUGE 430 STAINLESS INNER DUCT INSULATED WITH A 24 GAUGE 430 STAINLESS OUTER SHELL.

CAPTIVEAIRE SYSTEMS RECOMMENDS THE USE OF LISTED, PRE-FABRICATED ROUND GREASE EXHAUST DUCT TO REDUCE STATIC PRESSURE IN THE SYSTEM, MINIMIZE INSTALLATION AND INSPECTION TIMES, AND ENSURE DUCT IS LIQUID TIGHT

VERIFY CEILING HEIGHT

HEIGHT REQUIRED TO VERIFY THAT HOOD FITS SPACE AND TO SIZE THE ENCLOSURE PANELS

CUSTOMER APPROVAL TO MANUFACTURE:

Approved as Noted

Approved with NO Exception Taken

Revise and Resubmit

SIGNATURE _____

Your Title _____ Date _____

HVAC DISTRIBUTION NOTE

IT IS RECOMMENDED NOT TO INSTALL HIGH VELOCITY DIFFUSERS OR HVAC RETURNS WITHIN TEN (10) FEET OF THE EXHAUST HOOD. PERFORATED DIFFUSERS ARE RECOMMENDED.

EXHAUST HOOD DETAILS

REVISIONS

DESCRIPTION	DATE

CAPTIVEAIRE

Maryland Office
PHONE: (800) 988-0881 FAX: 9122275931 EMAIL: arturo.meza@captiveaire.com

Cava - Saginaw, TX
1424 North Old Decatur Road,
Saginaw, TX, 76179

CAVA - SAGINAW TX
1428 N OLD DECATUR ROAD #150
SAGINAW, TX 76179
FOR CAVA
14 Ridge Square NW #500, WASHINGTON, DC 20016

DATE: 1/16/2024
DWG.#: 6539093
DRAWN BY: AM-32
SCALE: NTS
MASTER DRAWING

SHEET NO. 1

HOOD DETAILS

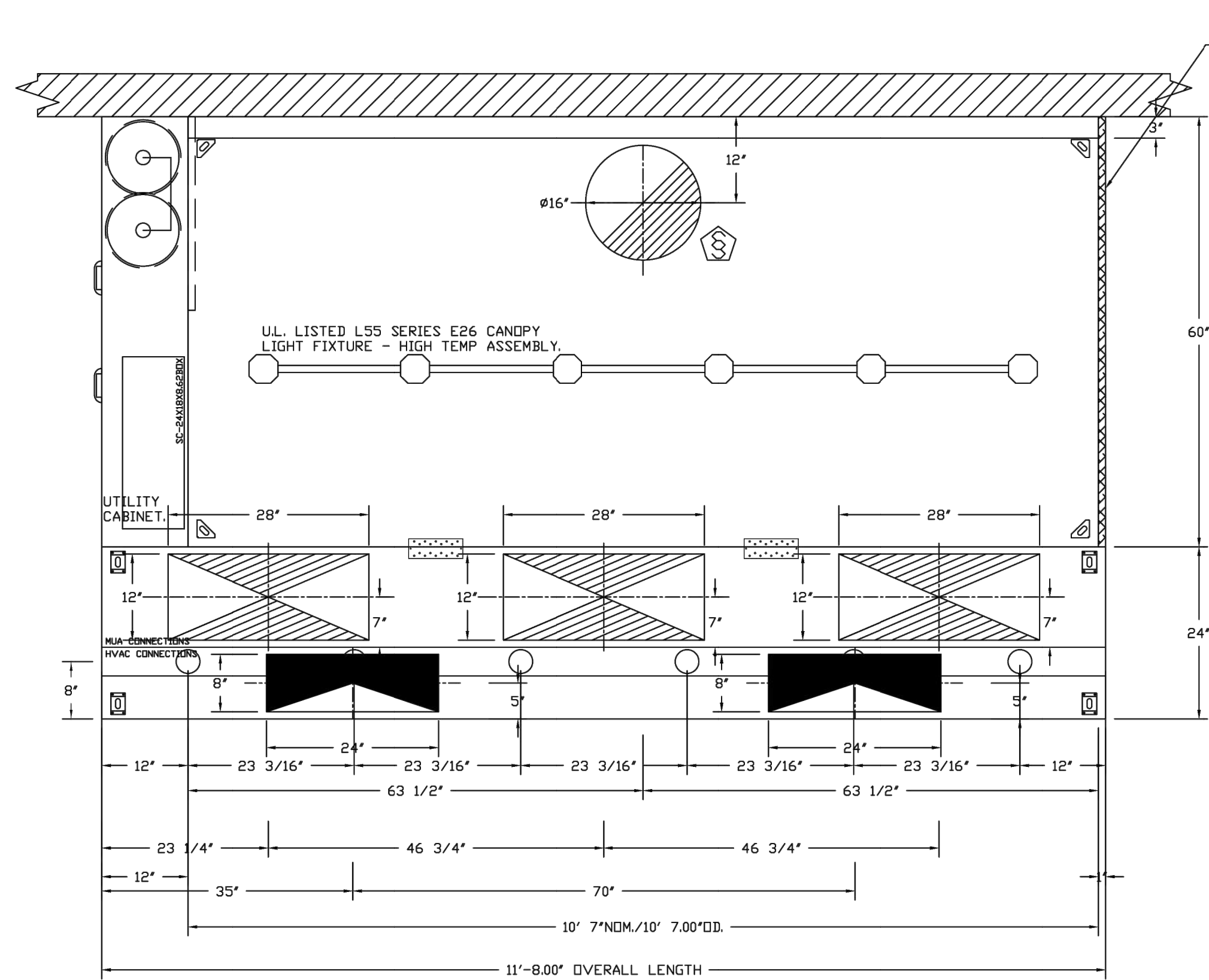
SHEET: H000

CORE STATES GROUP

135 Water Street
Suite 200
Saginaw, MI 48640
312.718.6415
core-states.com

FOR REFERENCE ONLY

CAVA

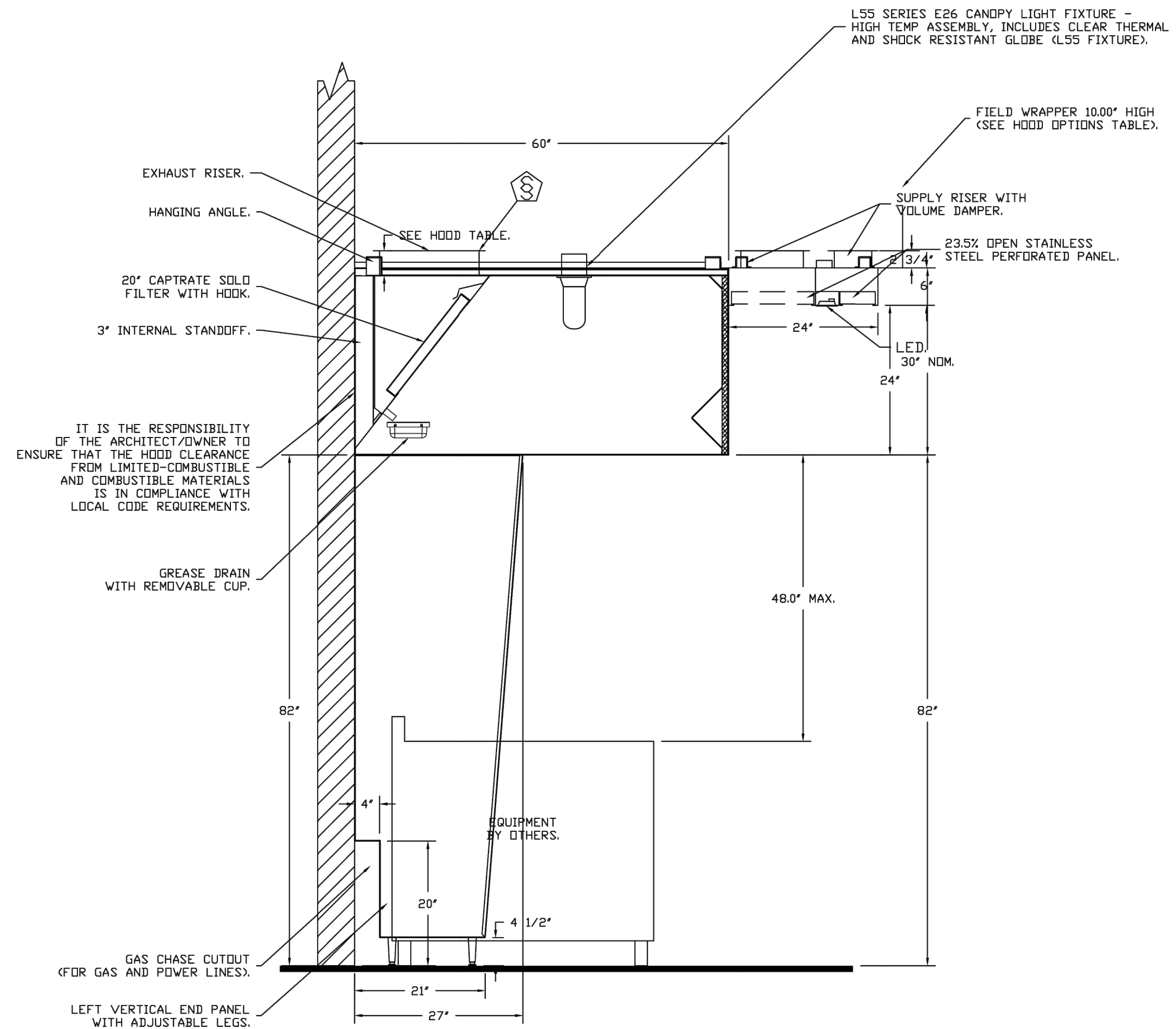


PLAN VIEW - HOOD #1 (33)
10' 7.00" LONG 6030ND-2-ACPSP-F

ACPSP SHIPS LOOSE FOR FIELD INSTALLATION

LIGHTING FOR ACPSP JOB # 6539093 - HOOD #1
INPUT: 120V AC, 1 PHASE, 50/60HZ, 3.5 WATTS PER LIGHT.
TO CONTROL LIGHTS WITH HOOD LIGHT SWITCH, WIRE PER
HOOD ELECTRICAL CONTROL PANEL SCHEMATIC.
TO CONTROL LIGHTS WITH BUILDING LIGHT SWITCH, WIRE
BLACK AND WHITE WIRE TO A 120VAC SERVICE.
END TO END ACPSPS REQUIRE 120VAC FIELD WIRING FROM
J-BOX TO J-BOX. REPLACE LIGHTS WITH LED LIGHTS ONLY.

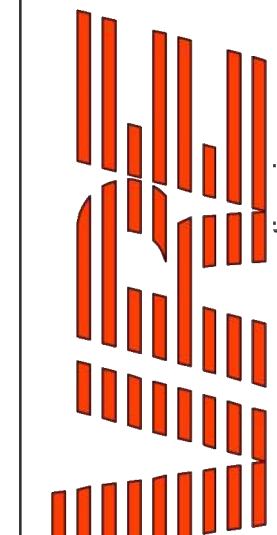
1" LAYER OF INSULATION
FACTORY INSTALLED IN
1.00" END STANDOFF MEETS
0" REQUIREMENTS CLEARANCE
TO COMBUSTIBLE SURFACES.



SECTION VIEW - MODEL 6030ND-2-ACPSP-F
HOOD - #1 (33)

IT IS THE RESPONSIBILITY
OF THE ARCHITECT/DOWNER TO
ENSURE THAT THE HOOD CLEARANCE
FROM LIMITED-COMBUSTIBLE
AND COMBUSTIBLE MATERIALS
IS IN COMPLIANCE WITH
LOCAL CODE REQUIREMENTS.

REVISIONS	
DESCRIPTION	DATE



CAPTIVE
www.captiveair.com

Cava - Saginaw, TX
1424 North Old Decatur Road,
Saginaw, TX, 76179

DATE: 1/16/2024
DWG.#:
6539093
DRAWN BY: AM-32
SCALE:
NTS
MASTER DRAWING

SHEET NO.
2

Maryland Office
PHONE: (800) 988-0881 FAX: 9192275931 EMAIL: arturo.mezar@captiveair.com

CORE STATES
GROUP

FOR REFERENCE
ONLY

CAVA

CAVA - SAGINAW TX
1428 N OLD DECATUR ROAD #150
SAGINAW, TX 76179
FOR CAVA
14 Ridge Square NW #500, WASHINGTON, DC 20016

AOR PROJECT NUMBER:
CAV.36838

ISSUE	DATE
TEST FIT	MAR 30, 2023
LEASE EXHIBIT	APR 13, 2023
LEASE EXHIBIT REV	MAY 25, 2023
LEASE EXHIBIT REV	JUN 13, 2023
SCH DES SET	JUL 21, 2023
PERMIT SET	FEB 5, 2024
BID SET	APR 12, 2024
BUILDING REVIEW	MAY 7, 2024
IFC SET	JUL 1, 2024

HOOD DETAILS

SHEET:

H001

135 Water Street
Suite 200
Saginaw, TX 76761
312.718.6415
core-states.com

FIRE SYSTEM INFORMATION – JOB#6539093

FIRE SYSTEM NO	TAG	TYPE	SIZE	MAX FP	DESIGN FP	INSTALLATION	
						SYSTEM	LOCATION ON HOOD
1		TANK FS	4.0/4.0	40	37	FIRE CABINET LEFT	LEFT, HOOD 1

FIRE SYSTEM PARTS LIST KEY

FIRE SYSTEM NO	TAG	KEY NUMBER – PART DESCRIPTION	QTY BY FACTORY	QTY BY DIST
		0 - 0 - TANK FIRE SUPPRESSION POST-DISCHARGE PROCEDURE UTILITY CABINET LABEL SHEET.	1	0
		0 - 0 - TANK FIRE SUPPRESSION MAINTENANCE GUIDE UTILITY CABINET LABEL SHEET.	1	0
		0 - 0 - 12-F28021-32144-0T-360 DUCT FIRE THERMOSTAT WITH 12 FOOT WIRE LEADS. NO. CLOSE ON TEMP RISE AT 360°F.	1	0
		0 - 0 - 32-00002 QUIK SEAL – 1/2" (UL).	1	0
		0 - 0 - 4429K153 1/2" MALE NPT TO 1/2" FEMALE NPT ELBOW, BRASS.	2	0
		0 - 0 - 4429K422 1/2" X 1/4" BRASS REDUCING BUSHING.	1	0
		0 - 0 - 79525 1/2" 90 PRO-PRESS ELBOW WITH 1/2" NPT FEMALE CONNECTION, VIEGA.	1	0
		0 - 0 - 79580 1/2" X 1/2" PRO-PRESS TEE X 1/2" NPT FEMALE CONNECTION, VIEGA.	2	0
		0 - 0 - 87-120042-001 SECONDARY ACTUATOR VALVE (SVA) – SINGLE ACTUATOR, REQUIRES PRIMARY RELEASE ACTUATOR, TANK FIRE SUPPRESSION.	1	0
		0 - 0 - 87-120045-001 HOSE, SECONDARY ACTUATOR HOSE, 7.5' BRAIDED STAINLESS STEEL, TANK FIRE SUPPRESSION.	1	0
		0 - 0 - 87-300001-001 TANK – PRESSURIZED TANK USED FOR TANK FIRE SUPPRESSION.	2	0
		0 - 0 - 87-300030-001 PRIMARY ACTUATOR KIT (PAK) – ACTUATOR AND RELEASE SOLENOID ASSEMBLY, ONE NEEDED PER FIRE SYSTEM, SUPERVISED, TANK FIRE SUPPRESSION.	1	0
		0 - 0 - 87-300152-001 HARDWARE, SVA BOLTS, TANK FIRE SUPPRESSION.	8	0
		0 - 0 - 9055455PC PRO PRESS 1/2 PRESS X PRESS 90 ELBOW LD.	6	0
		0 - 0 - 9097200PC PRO PRESS PC611 1/2 PRESS TEE LD.	7	0
		0 - 0 - 98694A115 HARDWARE, DATANKLOCK LOCKING BRACKET SQUARE NUTS 5/16" ZINC, TANK FIRE SUPPRESSION.	4	0
		0 - 0 - A0034332 JUNCTION BOX FOR MANUAL PULL STATION. 1.5" DEEP BACK BOX, RED COLOR.	1	0
		0 - 0 - A31484 1/4" NPT SCHRADER VALVE AND CAP, JB INDUSTRIES. 1/4" FLARE X 1/4" MPT HALF UNION. USED ON TANK SERVICE PORT.	1	0
		0 - 0 - B1145 3/8" BLACK IRON 90 ELL.	3	0
		0 - 0 - DATANKLOCK DISCHARGE ADAPTER TANK LOCKING PLATE FOR FIRE SYSTEM TANK INSTALLATION IN UTILITY CABINETS, TANK FIRE SUPPRESSION.	2	0
		0 - 0 - TANK STRAP TANK STRAP – USED FOR TANK FIRE SUPPRESSION.	6	0
		0 - 0 - TFS-UCTANKBRACKET TANK BRACKET FOR FIRE SYSTEM TANK INSTALLATION IN UTILITY CABINETS, TANK FIRE SUPPRESSION.	2	0
		0 - 0 - WK-283952-000 DISCHARGE ADAPTER, TANK FIRE SUPPRESSION.	2	0
		16 - 16 - 79210 1/2" X 3/8" NPT MALE ADAPTER, VIEGA.	8	0
		16 - 16 - DL-F NOZZLE – TANK PROTECTION APPLIANCE COVERAGE NOZZLE (INCLUDES METAL BLOW OFF CAP, LANYARD, USED WITH CHROME-PLATED PIPE).	8	0
		26 - 26 - QSA-3/8 QUIK SEAL – 3/8" (UL).	8	0
		34 - 34 - A0034331 24VDC SINGLE ACTION MANUAL ACTUATION DEVICE (PUSH/PULL STATION) WITH PROTECTIVE COVER, ONE (1) NORMALLY OPEN CONTACT. RED COLOR.	1	0

- NOTES**
- FIELD PIPE DROPS AS SHOWN
 - PIPING, ELBOWS, TEES, AND NOZZLES SUPPLIED BY CAS.
 - FIELD INSTALLED DROP: FACTORY WILL PROVIDE QTY 2 60IN LONG PIECES OF CHROME PLATED PIPING SHIPPED LOOSE TO BE FIELD-INSTALLED.
 - SHIP LOOSE DROP: FACTORY WILL PROVIDE THE EXACT CHROME PIPE LENGTH NEEDED SHIPPED LOOSE TO BE FIELD-INSTALLED.
 - RELOCATE NOZZLES IF FLOW PATTERN IS BLOCKED BY SHELVEING, SALAMANDERS, ETC.
 - OVERLAPPING COVERAGE SHALL NOT BE USED ON ANY APPLIANCE WITH AN OBSTRUCTION.
 - IF APPLICABLE, EXTENDED PRE-PIPED DROPS ARE SHIPPED LOOSE.
 - FACTORY PIPING EXTENDS A MAXIMUM OF 6" ABOVE THE TOP OF THE HOOD.
 - APPLIANCE DIMENSIONS LISTED REPRESENT THE COOKING SURFACE SIZE, NOT THE OVERALL APPLIANCE SIZE.
 - THIS FIRE SYSTEM COMPLIES WITH U.L. 300 REQUIREMENTS.
 - DL-F NOZZLE PART NUMBER REPLACES 3070-3/8H-10-SS

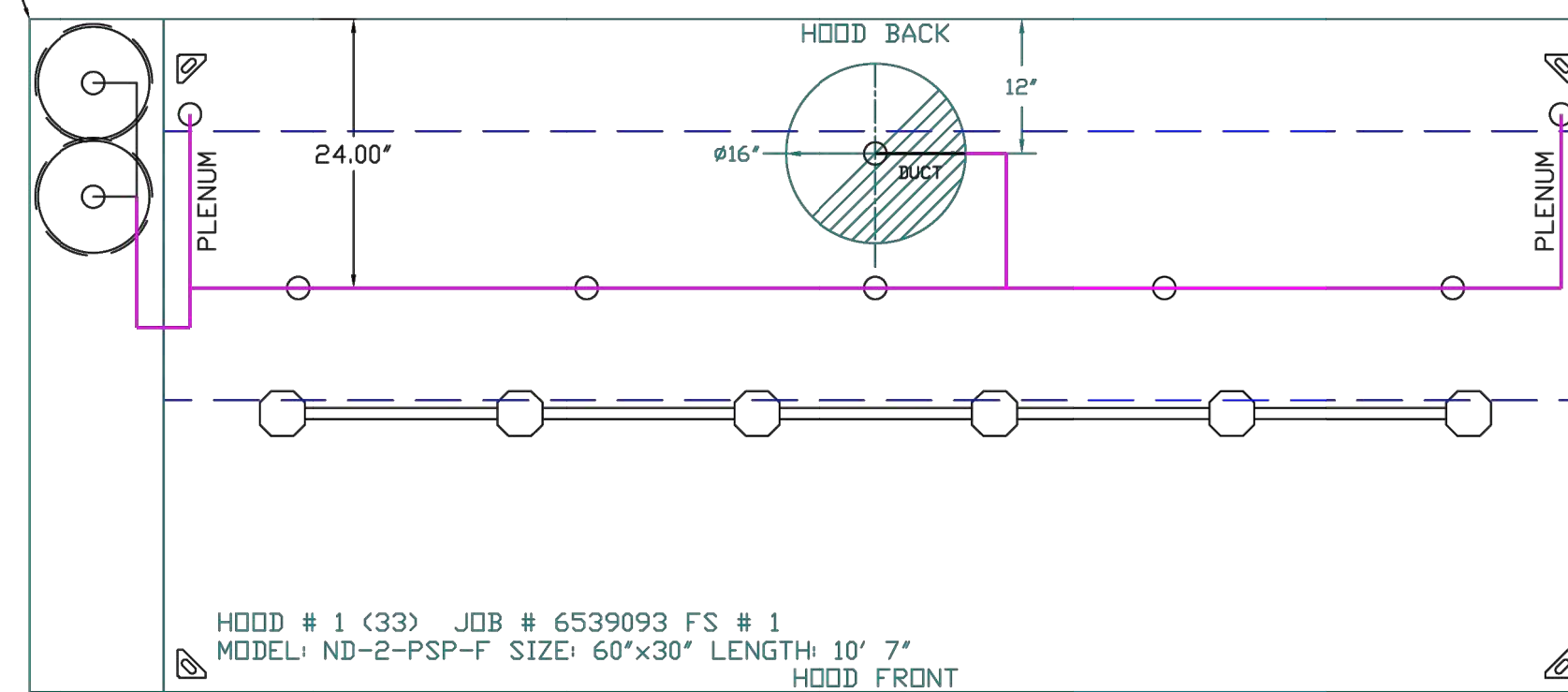
JOB #: 6539093
 JOB NAME: CAVA – SAGINAW, TX.
 SYSTEM SIZE: TANK-SP-2 DESIGN FP: 37, MAXIMUM FP: 40.
 HOOD # 1 10' 7.00' LONG X 60" WIDE X 30" HIGH.
 RISER # 1 SIZE: 16" DIA.
 HOOD # 1 METAL BLOW-OFF CAPS INCLUDED.

- HEAVY-DUTY APPLIANCES (RATED 600°F) WILL REQUIRE AN ADDITIONAL DOWNSTREAM FIRESTAT IN THE EVENT THAT THE DUCTWORK CONTAINS ANY HORIZONTAL RUNS OVER 25 FT IN LENGTH.
- MEDIUM TO LIGHT-DUTY APPLIANCES (RATED 450°F) WILL NOT REQUIRE ANY ADDITIONAL DOWNSTREAM DETECTION.

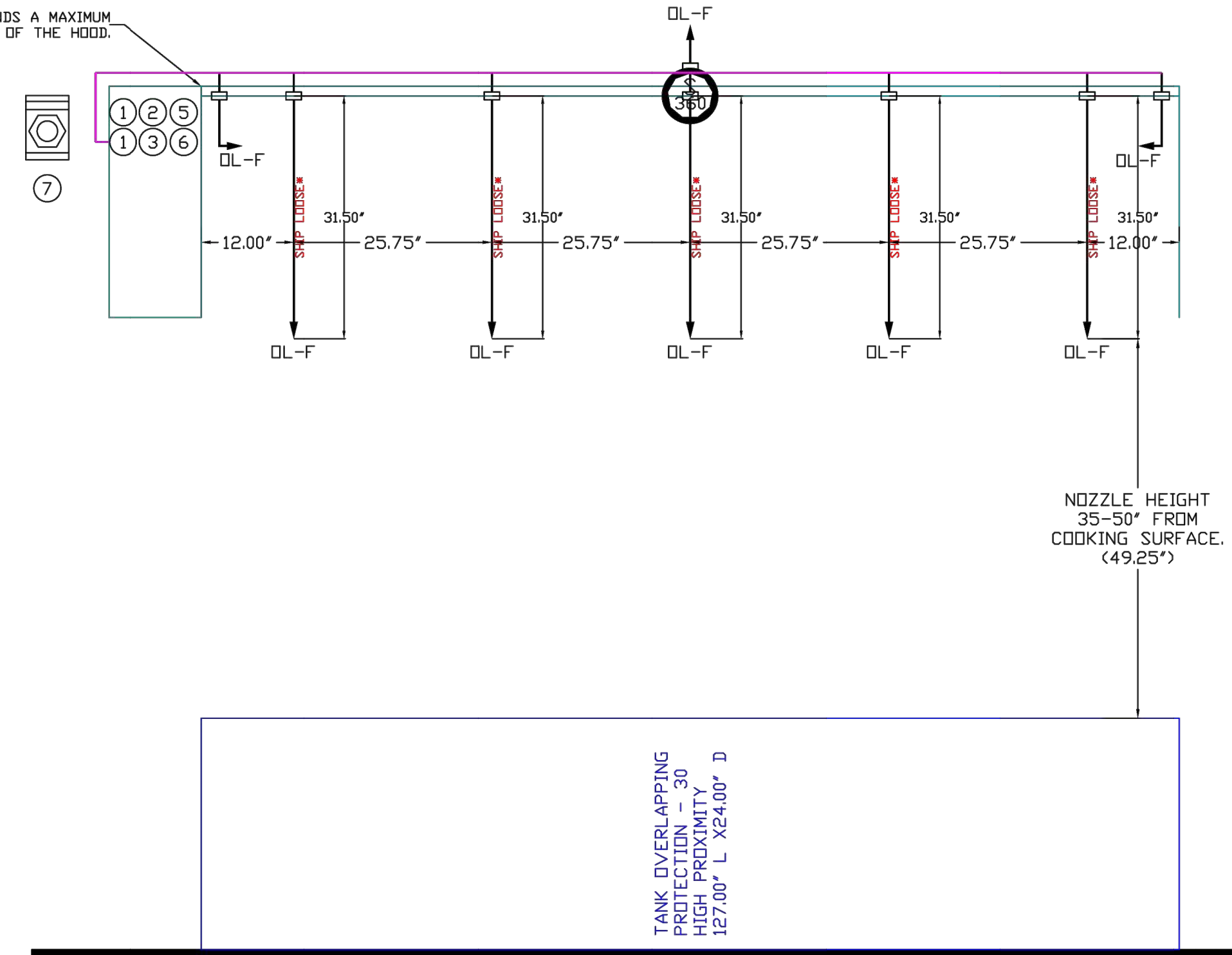
LEGEND – FIRE CABINET TANK SYSTEM

- 1 4 GALLON TANK.
- 2 PRIMARY ACTUATOR RELEASE.
- 3 SECONDARY ACTUATOR RELEASE.
- 4 PRESSURE SUPERVISION SWITCH.
- 5 PRIMARY HOSE ASSEMBLY.
- 6 SECONDARY HOSE ASSEMBLY.
- 7 REMOTE MANUAL ACTUATION DEVICE.

- SYSTEM REQUIRES A MINIMUM OF 7 FT OF EQUIVALENT PIPE LENGTH BETWEEN TANK AND NEAREST APPLIANCE NOZZLE FOR MOST APPLIANCES. EACH 90 DEGREE ELBOW ADDS 1.3 FT OF EQUIVALENT LENGTH. SEE MANUAL FOR DETAILS



FACTORY PIPING EXTENDS A MAXIMUM OF 6" ABOVE THE TOP OF THE HOOD.



TANK OVERLAPPING PROTECTION – 30 HIGH PROXIMITY 127.00" L X 24.00" D

REVISIONS	
DESCRIPTION	DATE

CAPTIVE

Maryland Office
 PHONE: (800) 988-0881 FAX: 9192275931 EMAIL: arturo.mezar@captiveware.com
 www.captiveware.com

Cava – Saginaw, TX
 1424 North Old Decatur Road,
 Saginaw, TX, 76179

DATE: 1/16/2024
DWG.#: 6539093
DRAWN BY: AM-32
SCALE: NTS
MASTER DRAWING

SHEET NO.
3

CORE STATES GROUP

135 Water Street
 Suite 200
 Dallas, TX 75201
 312.718.6415
 core-states.com

FOR REFERENCE ONLY

CAVA

CAVA - SAGINAW TX
 1428 N OLD DECATUR ROAD #150
 SAGINAW, TX 76179
 FOR CAVA
 14 Ridge Square NW #500, WASHINGTON, DC 20016

AOR PROJECT NUMBER: CAV.36838

ISSUE	DATE
TEST FIT	MAR 30, 2023
LEASE EXHIBIT	APR 13, 2023
LEASE EXHIBIT REV	MAY 25, 2023
LEASE EXHIBIT REV	JUN 13, 2023
SCH DES SET	JUL 21, 2023
PERMIT SET	FEB 5, 2024
BID SET	APR 12, 2024
BUILDING REVIEW	MAY 7, 2024
IFC SET	JUL 1, 2024

HOOD DETAILS

SHEET:
H002

- FAN #2 A1-D250-15D-MPU - HEATER (MAL)
- DIRECT GAS FIRED HEATED MAKE UP AIR UNIT WITH 15' MIXED FLOW DIRECT DRIVE FAN.
 - INTAKE HOOD WITH EZ FILTERS.
 - DOWN DISCHARGE - AIR FLOW RIGHT -> LEFT.
 - GAS PRESSURE GAUGE, 0-35", 2.5" DIAMETER, 1/4" THREAD SIZE.
 - GAS PRESSURE GAUGE, -5 TO +15 INCHES WC, 2.5" DIAMETER, 1/4" THREAD SIZE.
 - LOW FIRE START. ALLOWS THE BURNER CIRCUIT TO ENERGIZE WHEN THE MODULATION CONTROL IS IN A LOW FIRE POSITION.
 - SHIP LOOSE GAS STRAINER, TO BE INSTALLED UPSTREAM OF UNIT CONNECTION, 3/4" CONNECTION.
 - MOTORIZED BACK DRAFT DAMPER 16" X 18" FOR SIZE 1 STANDARD & MODULAR HEATER UNITS W/EXTENDED SHAFT, STANDARD GALVANIZED CONSTRUCTION, 3/4" REAR FLANGE, LOW LEAKAGE, TFB20S ACTUATOR INCLUDED.
 - 3 TON, SINGLE CIRCUIT MODULAR PACKAGED COOLING OPTION FOR SIZE 1 DF/EH MODULAR PACKAGED UNIT. INCLUDES CONDENSER, DX COIL, FILTER/DRYER KIT, THERMAL EXPANSION VALVE, R410A REFRIGERANT, AND REFRIGERANT PIPING. (1100 TO 1,800 CFM) WHEN ORDERED WITH OPPOSITE AIRFLOW CONDENSERS ACCESS AND COIL PIPING WILL REMAIN IN STANDARD POSITION. DRAIN AND SLEDS WILL MOVE TO THE OPPOSITE SIDE. ANY OTHER CHANGE WILL REQUIRE CLI. CONDENSERS REQUIRE SEPARATE 208V, 3 PHASE POWER SUPPLY UNLESS ORDERED WITH SINGLE POINT CONNECTION. COIL = 2E2100IN.
 - DOWNTURN PLENUM FOR SIZE 1 COOLING COIL MODULE - REQUIRED FOR DOWN DISCHARGE COOLING COIL APPLICATIONS.
 - SIZE 1 MOISTURE ELIMINATOR OPTION FOR DX COILS, MPUS AND CHILLED WATER COILS - ALLOWS COOLING COIL FACE VELOCITY TO INCREASE TO 650 FPM. INCREASES COOLING COIL MAX CFM TO 3650 CFM.
 - SEPARATE 120VAC WIRING PACKAGE FOR MAKE-UP AIR UNITS. OPTION MUST BE SELECTED WHEN MOUNTING VFD IN PREVIRE PANEL OR WITH DCV PACKAGE. PROVIDES SEPARATE 120VAC INPUT TO SUPPLY FAN. THIS 120V SIGNAL MUST BE RUN BY ELECTRICIAN FROM DCV TO MUA SWITCH.
 - FREEZE/STAT FACTORY SET AT 55°F AND 10 MINUTES.
 - HINGED DOUBLE WALL INSULATED DOOR ASSEMBLY (BURNER/BLOWER/MPU SECTION).
 - 2 YEAR PARTS WARRANTY.

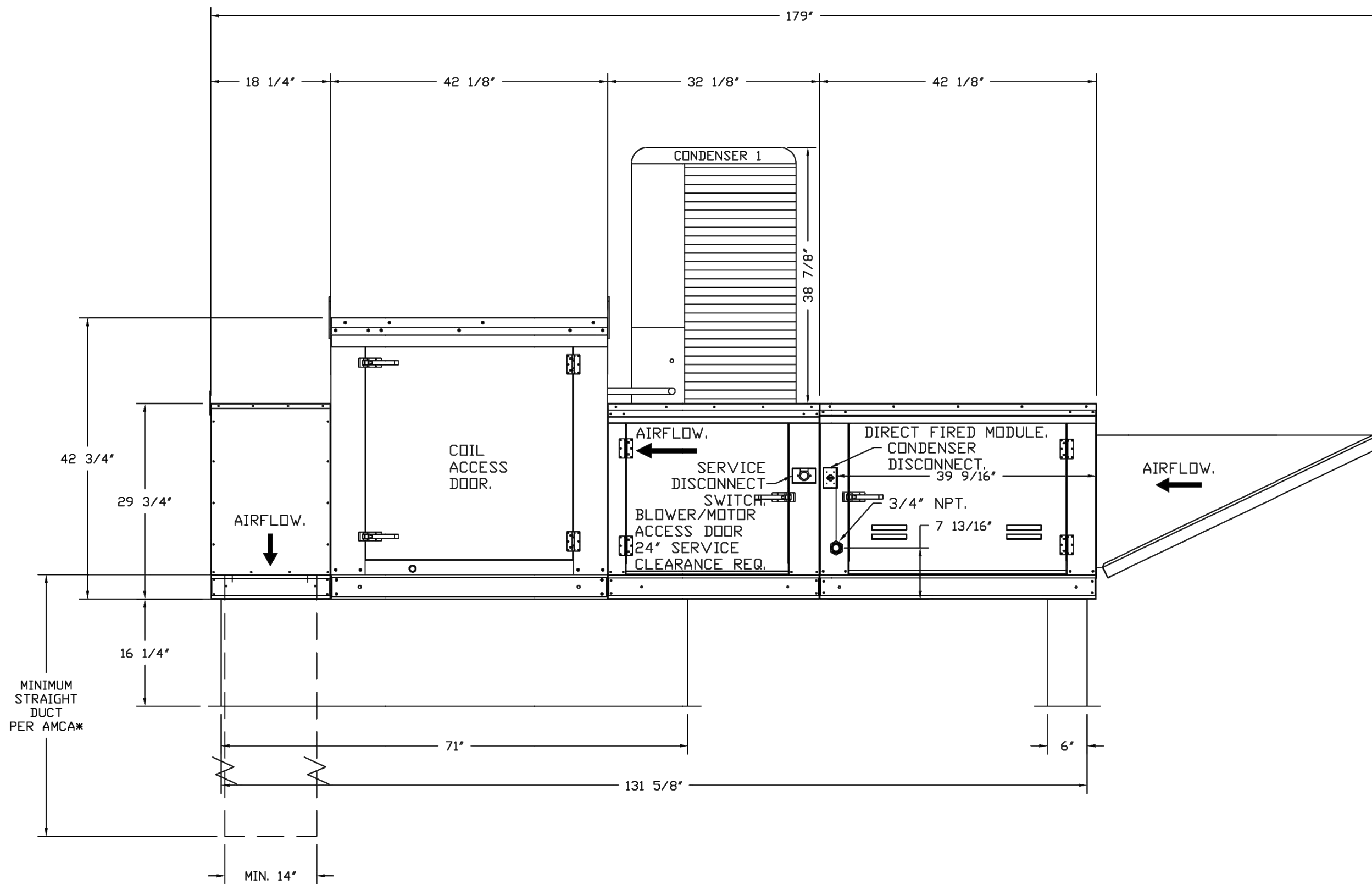
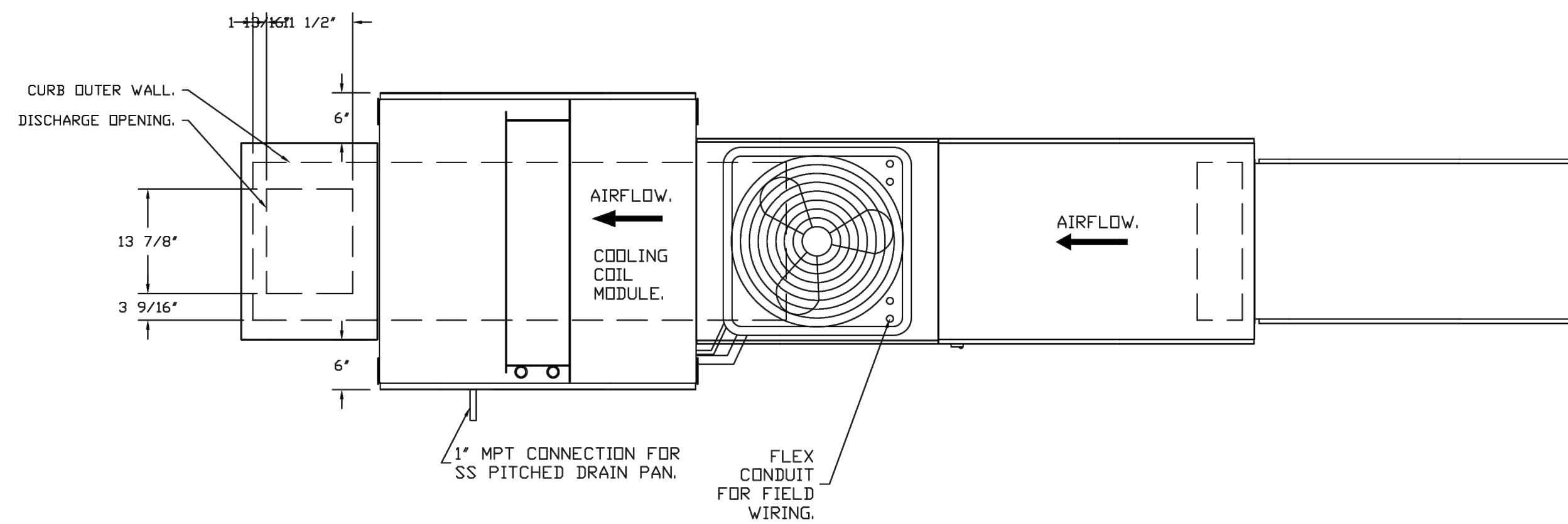
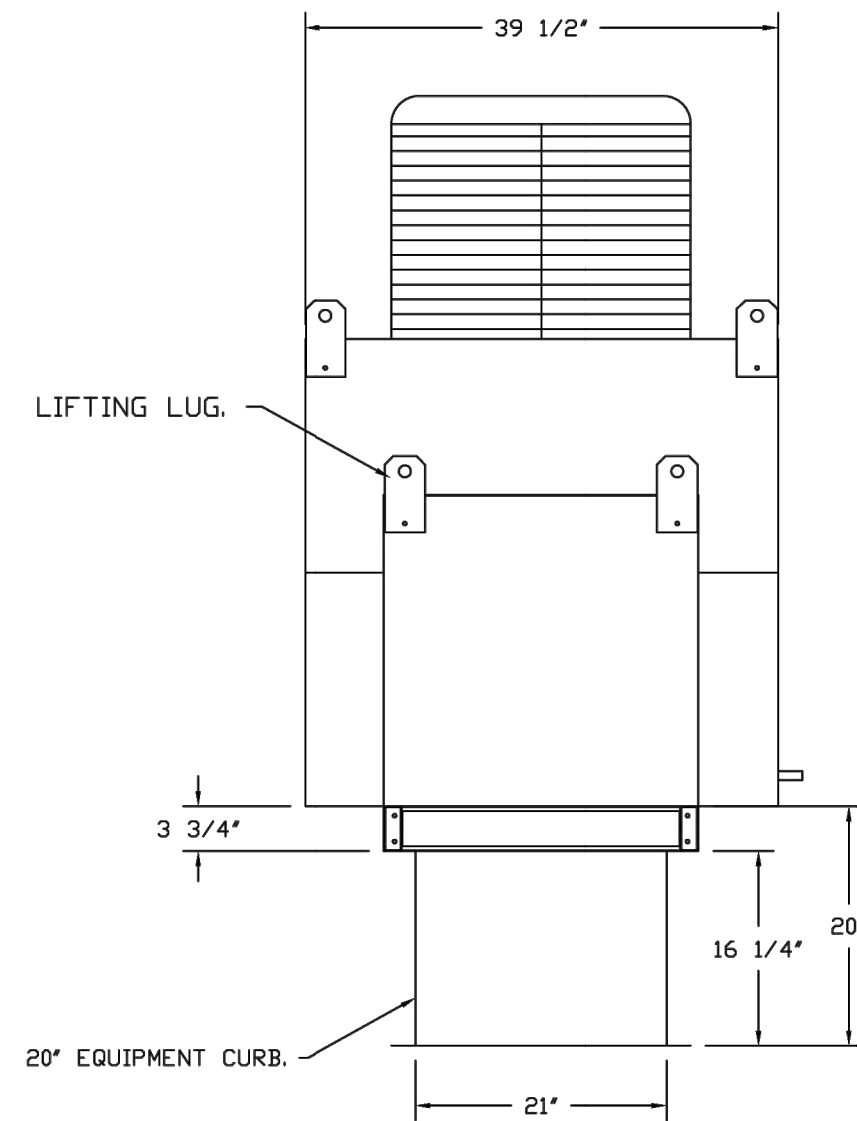
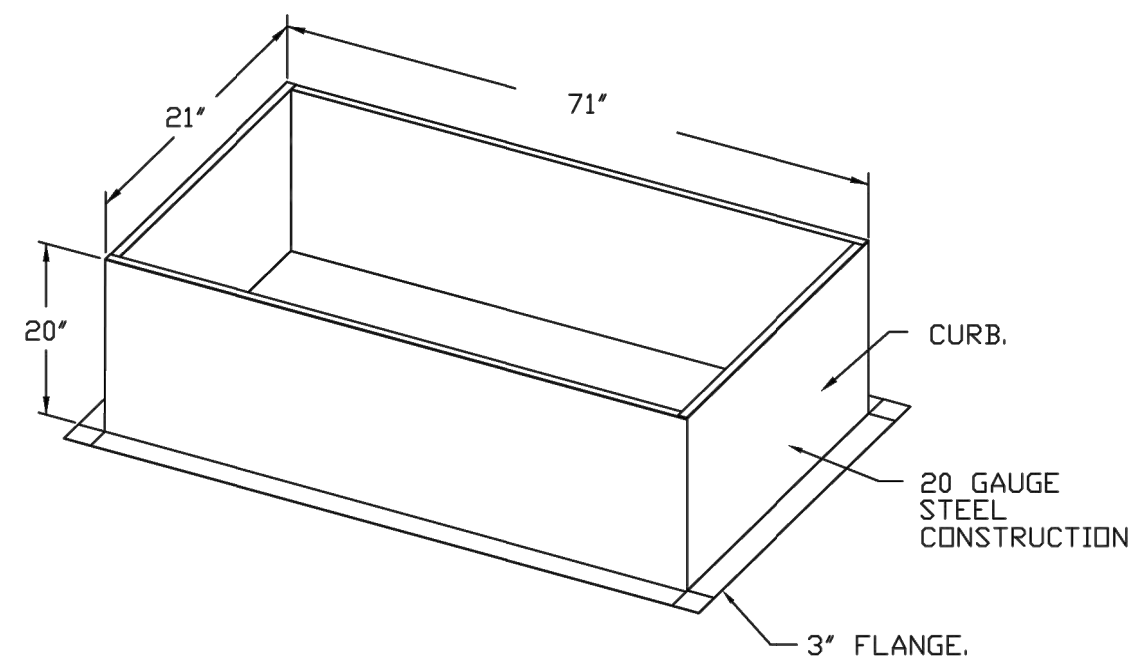
*NOTE: SUPPLY DUCT MUST BE INSTALLED TO MEET SMACNA STANDARDS. A MINIMUM STRAIGHT DUCT LENGTH MUST BE MAINTAINED DOWNSTREAM OF UNIT DISCHARGE AS OUTLINED IN AMCA PUBLICATION 201. WHEN USING RECTANGULAR DUCTWORK, ELBOWS MUST BE RADIUS THROAT, RADIUS BACK WITH TURNING VANES. FLEXIBLE DUCTWORK AND SQUARE THROAT/SQUARE BACK ELBOWS SHOULD NOT BE USED. ANY TRANSITION AND/OR TURNS IN THE DUCTWORK WILL CAUSE SYSTEM EFFECT. SYSTEM EFFECT WILL DRASTICALLY INCREASE STATIC PRESSURE AND REDUCE AIRFLOW. DO NOT RELY ON UNIT TO SUPPORT DUCT IN ANY WAY. FAILURE TO PROPERLY SIZE DUCTWORK MAY CAUSE SYSTEM EFFECTS AND REDUCE PERFORMANCE OF THE EQUIPMENT. SUGGESTED STRAIGHT DUCT SIZE IS 14" x 14".

SUPPLY SIDE HEATER INFORMATION

WINTER TEMPERATURE = 27°F. TEMP. RISE = 48°F.
 BTUs CALCULATED OFF ACTUAL AIR DENSITY.
 OUTPUT BTUs AT ALTITUDE OF 0.0 FT. = 101330.
 INPUT BTUs AT ALTITUDE OF 673 FT. = 110141.
 OUTPUT BTUs AT ALTITUDE OF 673 FT. = 98890.
 INPUT BTUs AT ALTITUDE OF 673 FT. = 107489.



OPTIONS:
 - FULL BOTTOM CORNERS.



CUSTOMER APPROVAL TO MANUFACTURE:

Approved as Noted

Approved with NO Exception Taken

Revise and Resubmit

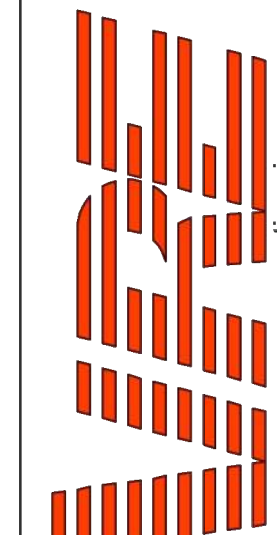
SIGNATURE _____

Your Title _____ Date _____

NOTES

DRAWING CONTAINS IMPORTANT INFORMATION FOR COORDINATION WITH M/E/P ENGINEER

REVISIONS	
DESCRIPTION	DATE



CAPTIVE AIR

Cava - Saginaw, TX
 1424 North Old Decatur Road,
 Saginaw, TX, 76179

DATE: 1/16/2024

DWG.#:
 6539093

DRAWN BY: AM-32

SCALE:
 NTS

MASTER DRAWING

SHEET NO.
 5

www.captiveair.com

Maryland Office
 EMAIL: arturo.mezar@captiveair.com

PHONE: (800) 988-0881 FAX: 9192275931

CORE STATES
 GROUP

FOR REFERENCE ONLY

CAVA

CAVA - SAGINAW TX
 1428 N OLD DECATUR ROAD #150
 SAGINAW, TX 76179
 FOR CAVA
 14 Ridge Square NW #500, WASHINGTON, DC 20016

AOR PROJECT NUMBER:
 CAV.36838

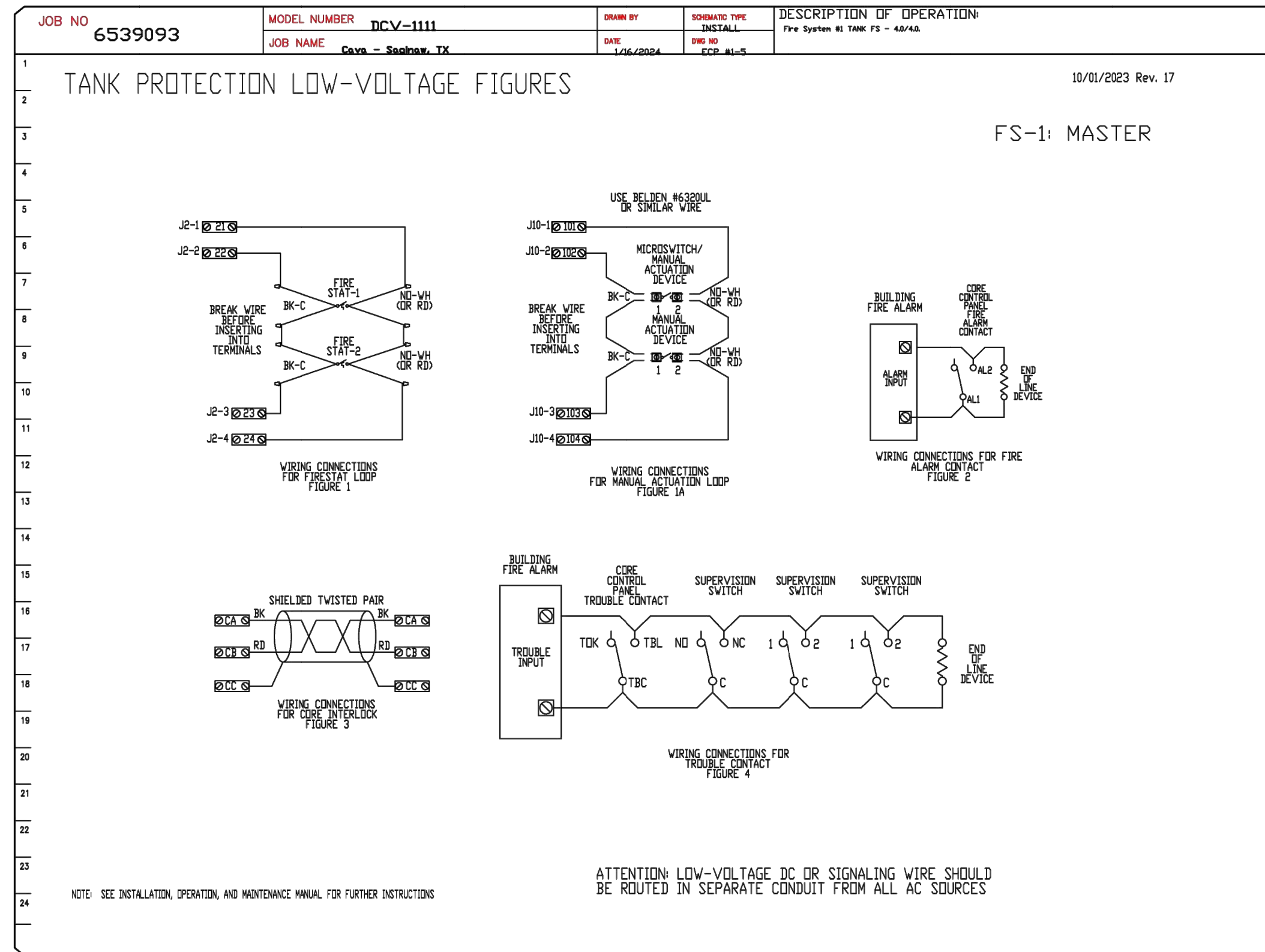
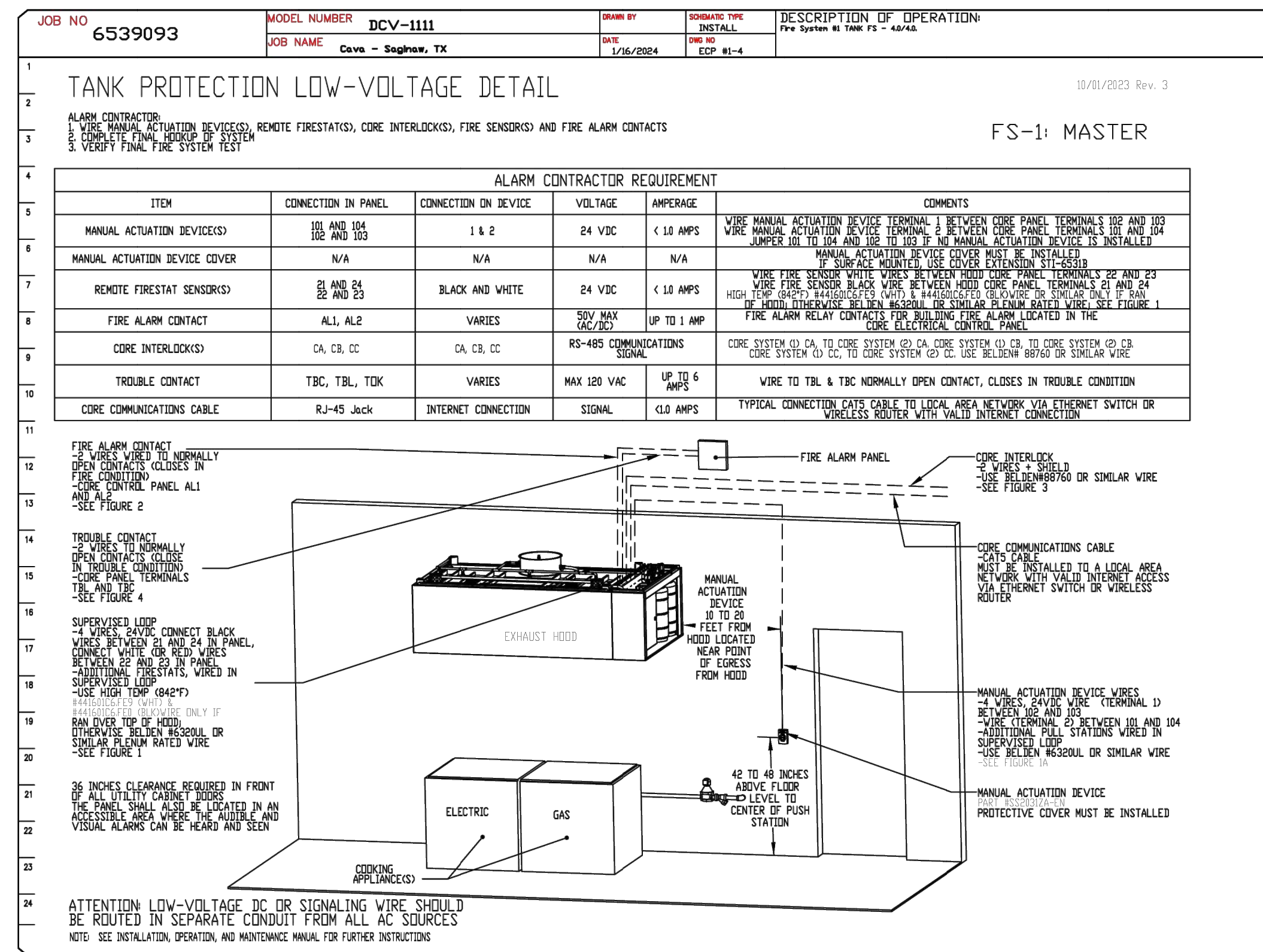
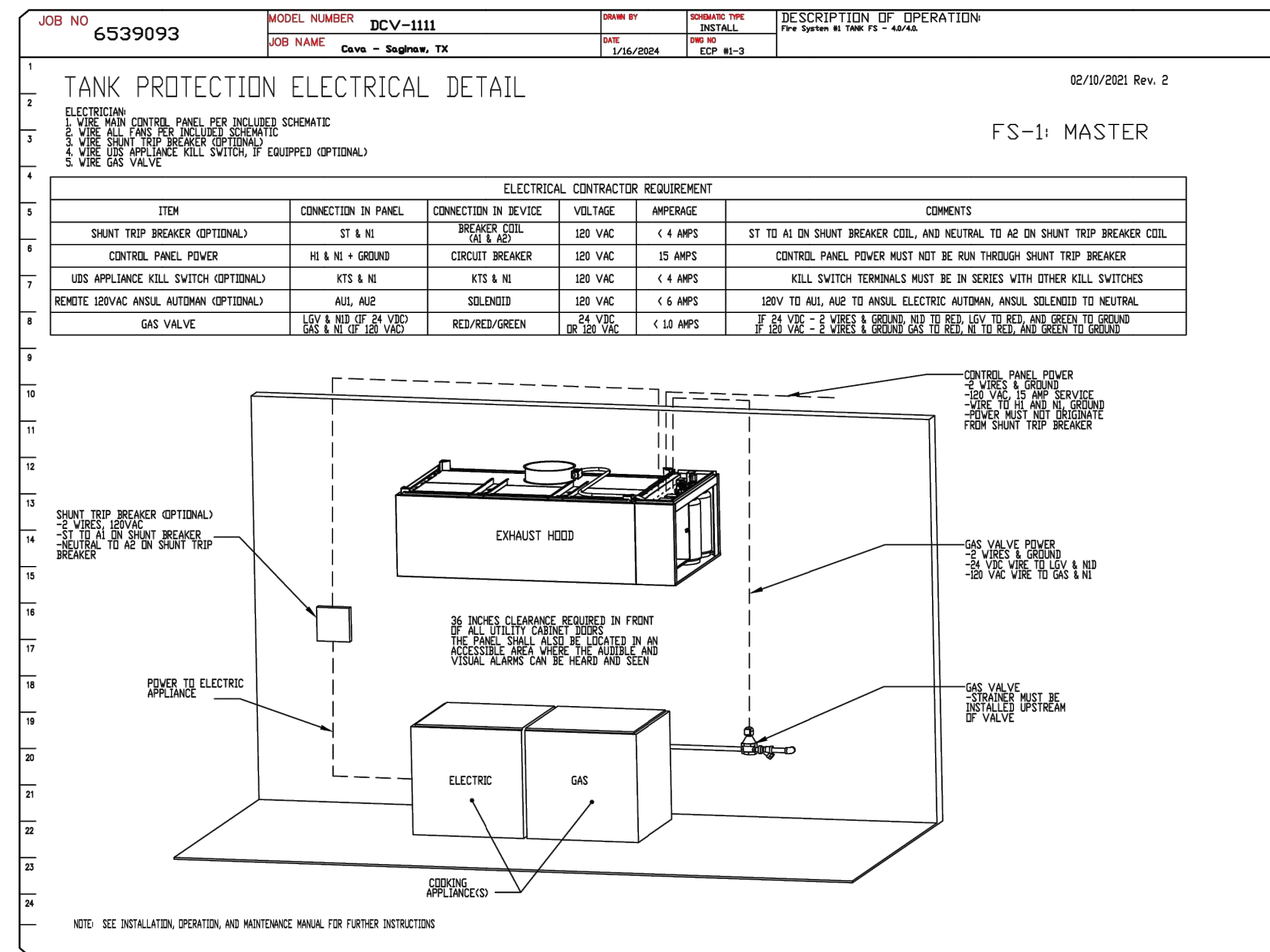
ISSUE	DATE
TEST FIT	MAR 30, 2023
LEASE EXHIBIT	APR 13, 2023
LEASE EXHIBIT REV	MAY 25, 2023
LEASE EXHIBIT REV	JUN 13, 2023
SCH DES SET	JUL 21, 2023
PERMIT SET	FEB 5, 2024
BID SET	APR 12, 2024
BUILDING REVIEW	MAY 7, 2024
IFC SET	JUL 1, 2024

HOOD DETAILS

SHEET:

H004

KITCHEN FAN DETAILS



REVISIONS	
DESCRIPTION	DATE

CAPTIVE
www.captivefire.com
Maryland Office
PHONE: (800) 988-0881 FAX: 9192275931 EMAIL: sarturo.mezar@captivefire.com

Cava - Saginaw, TX
1424 North Old Decatur Road,
Saginaw, TX, 76179

DATE: 1/16/2024
DWG.#: 6539093
DRAWN BY: AM-32
SCALE: NTS
MASTER DRAWING

SHEET NO. 7

CORE STATES GROUP
135 Water Street
Suite 201
Saginaw, TX 76179
312.718.6415
core-states.com

FOR REFERENCE ONLY

CAVA
FOR CAVA
AOR PROJECT NUMBER: CAV.36838
ISSUE DATE
TEST FIT MAR 30, 2023
LEASE EXHIBIT APR 13, 2023
LEASE EXHIBIT REV MAY 25, 2023
LEASE EXHIBIT REV JUN 13, 2023
SCH DES SET JUL 21, 2023
PERMIT SET FEB 5, 2024
BID SET APR 12, 2024
BUILDING REVIEW MAY 7, 2024
IFC SET JUL 1, 2024

CAVA - SAGINAW TX
1428 N OLD DECATUR ROAD #150
SAGINAW, TX 76179
FOR CAVA
14 Ridge Square NW #500, WASHINGTON, DC 20016

HOOD DETAILS

SHEET: H006