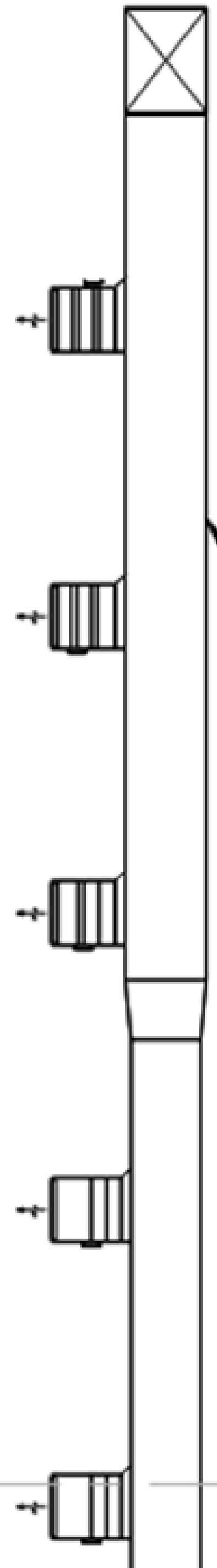


0.5

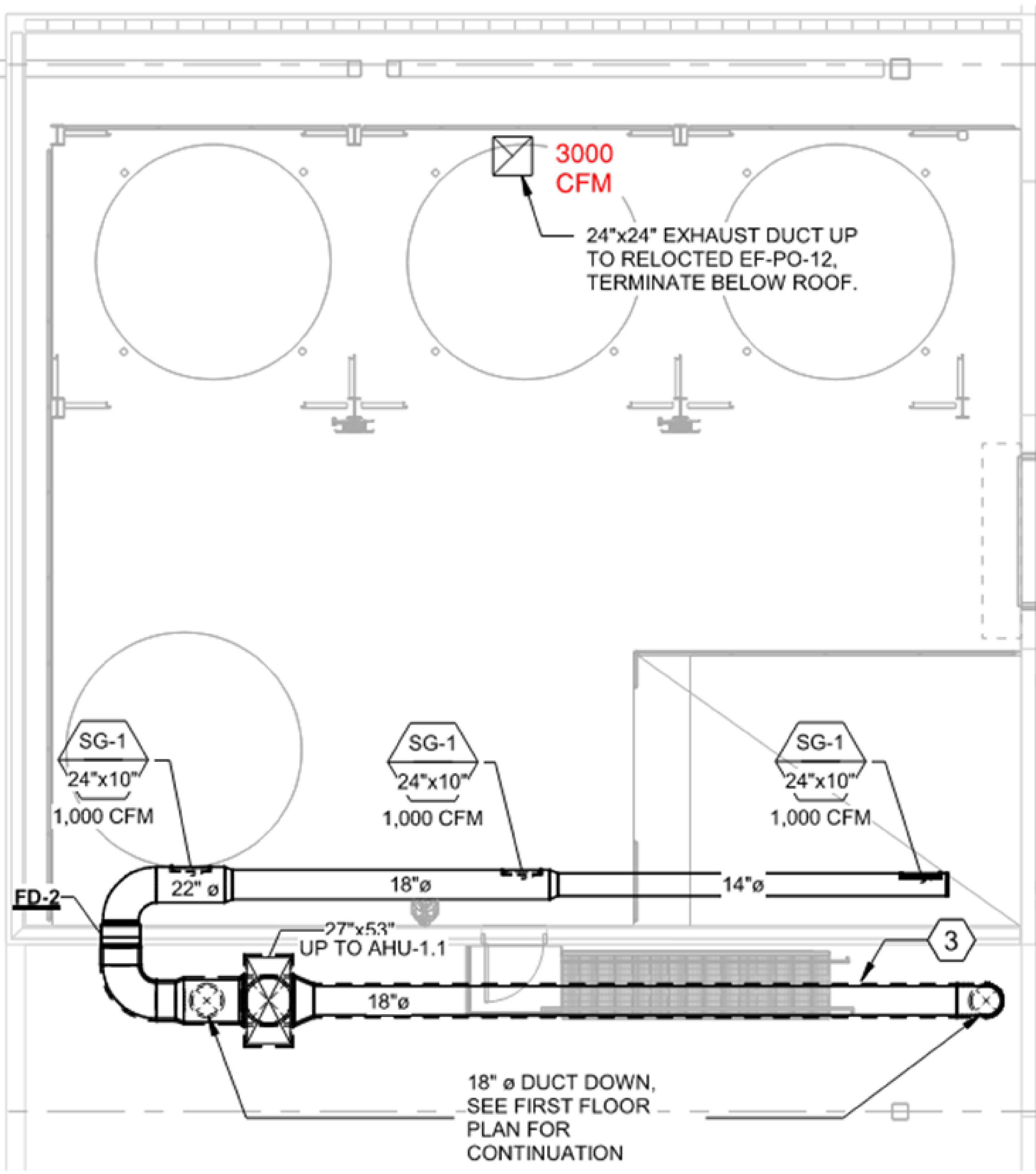
22" EXHAUST DUCT
UP TO RELOCATED
EF-PO-11



EXISTING
DUCTWORK TO
REMAIN.



0.5



3000
CFM

24"x24" EXHAUST DUCT UP
TO RELOCTED EF-PO-12,
TERMINATE BELOW ROOF.

SG-1
24"x10"
1,000 CFM

SG-1
24"x10"
1,000 CFM

SG-1
24"x10"
1,000 CFM

FD-2

27"x53"
UP TO AHU-1.1

3

18" ø DUCT DOWN,
SEE FIRST FLOOR
PLAN FOR
CONTINUATION

② HVAC MEZZANINE PLAN
1/8" = 1'-0"