

Report By:

NATIONAL  **TAB**

**National TAB
1329 E Kemper Rd, Ste 4210
Cincinnati, OH 45246**

**Report: Renew
Date: 11/22/2021**

**PROJECT
FREDDY'S - SHILOH, IL - RENEW 3FH (4)**

3320 GREEN MOUNT CROSSING DRIVE
SHILOH, IL 62269

Client

**Freddy's Frozen Custard & Steakburgers (CORPORATE)
260 N Rock Rd
Suite 200
Wichita, KS 67206**

Powered by



FACILIBUILD

www.facilibuild.com

National TAB

Project: FREDDY'S - SHILOH, IL - RENEW 3FH (4)

Table Of Contents

Section	Page #
Recommendation List	3
Site Pictures	4
Checklist Data	25
Summary Data	30
AHU/RTU	31
FAN - Supply	34
FAN - Exhaust	35
COIL - DX	40

RECOMMENDATION LIST

Assigned Organization: National TAB

Status: Not Submitted

Asset:

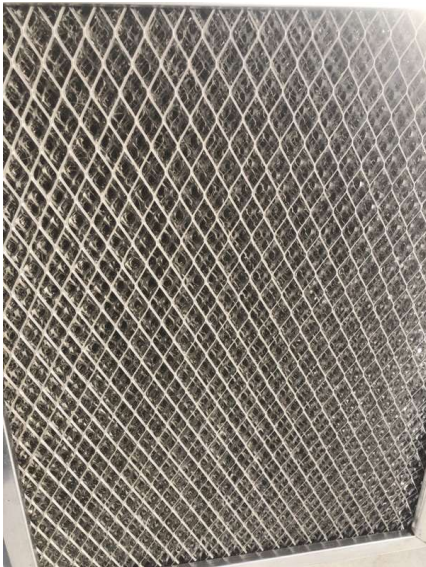
RECOMMENDATION (CLEAN/REPAIR/REPLACE/INFO)	
INFO	RTU-1 (Dining) fire is failing to light. Unit won't go into heat. A service provider needs to resolve the issue.

Notes/Comments:

Freddy's Shiloh, IL



MAU
HD-1 & HD-2



MAU
Dirty outside air filters



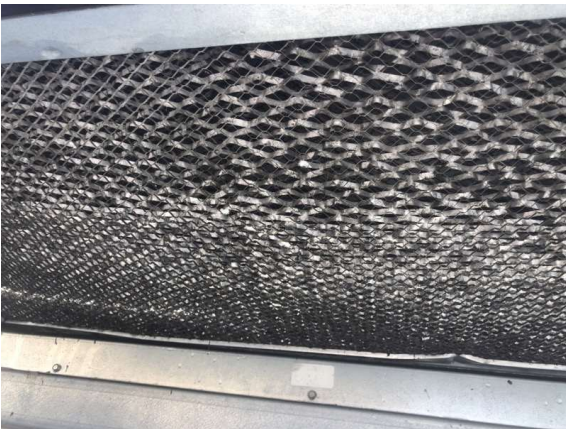
MAU
Clean outside air filters



RTU-1
Dining



RTU-1
Dirty outside air filters



RTU-1
Clean outside air filters



RTU-1
Dirty evaporator filters



RTU-1
Clean evaporator filters



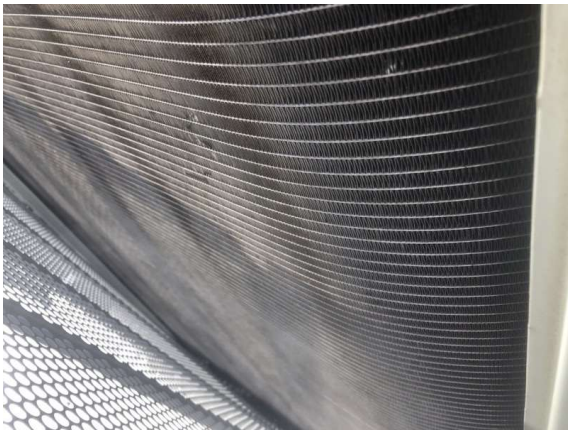
RTU-1
Dirty evaporator coil



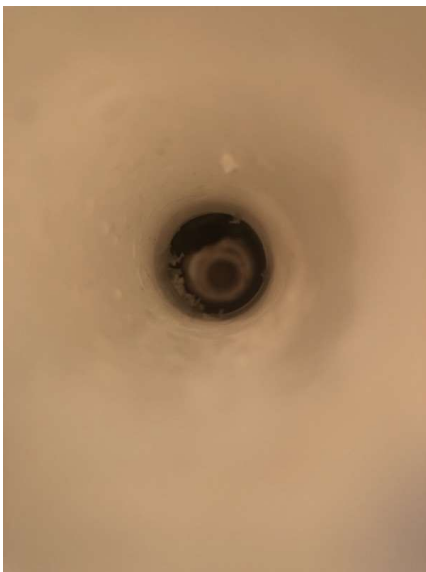
RTU-1
Clean evaporator coil



RTU-1
Dirty condenser



RTU-1
Clean condenser coil



RTU-1
Condensate drain flushed clean



RTU-1
Burner Tube inspection



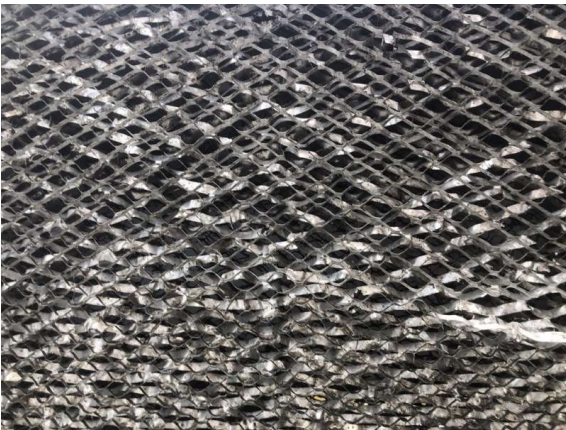
RTU-1
Heating compartment cleaned



RTU-2
Kitchen



RTU-2
Dirty outside air filters



RTU-2
Clean outside air filters



RTU-2
Dirty evaporator filters



RTU-2
Clean evaporator filters



RTU-2
Dirty evaporator coil



RTU-2
Clean evaporator coil



RTU-2
Dirt condenser coil



RTU-2
Clean condenser coil



RTU-2
Condensate drain flushed clean



RTU-2
Burner Tube inspection



RTU-2
Heating compartment



RTU-3
Kitchen



RTU-3
Dirty outside air filters



RTU-3
Clean outside air filters



RTU-3
Dirty evaporator filters



RTU-3
Clean evaporator filters



RTU-3
Dirty evaporator coil



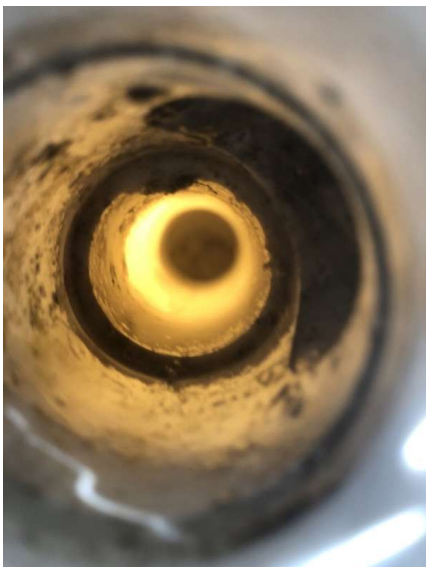
RTU-3
Clean evaporator coil



RTU-3
Dirty condenser coil



RTU-3
Clean condenser coil



RTU-3
Condensate drain flushed clean



RTU-3
Burner tube inspection



RTU-3
Heating compartment



Walk-in Cooler
Dirty evaporator



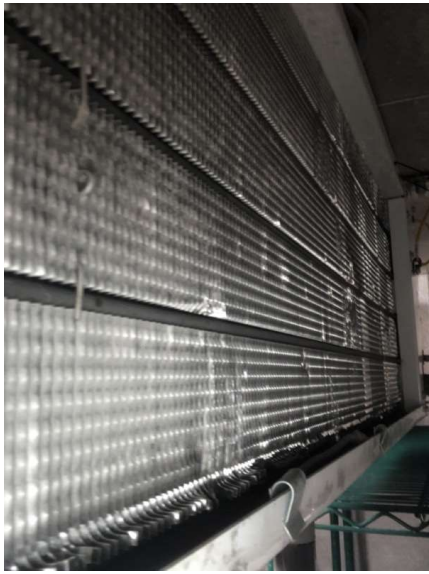
Walk-in Cooler
Clean evaporator



Walk-in Cooler
Dirty condenser



Walk-in Cooler
Clean condenser



Walk-in Freezer
Dirty evaporator



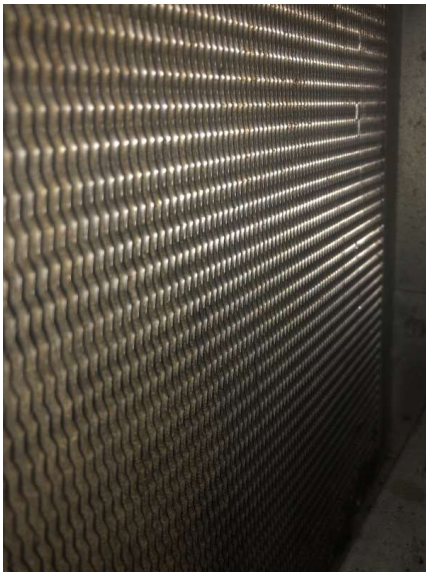
Walk-in Freezer
Clean evaporator



Walk-in Freezer
Dirty condenser



Walk-in Freezer
Clean condenser



Meat Cooler 1
Dirty condenser



Meat Cooler 1
Clean condenser



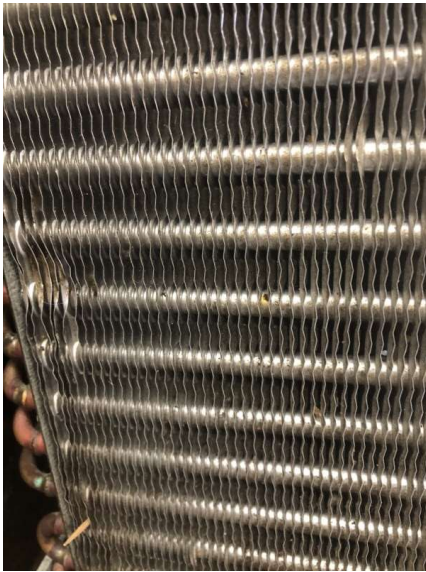
Meat Cooler 2
Dirty condenser



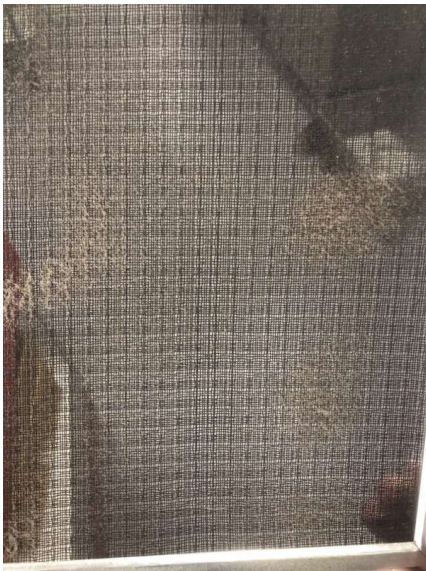
Meat Cooler 2
Clean condenser



Prep Table 1
Dirty condenser



Prep Table 1
Clean condenser



Fryer Freezer
Dirty condenser



Fryer Freezer
Clean condenser



Sundae Prep
Dirty condenser



Sundae Prep
Clean condenser



Toppings
Dirty condenser



Toppings
Clean condenser



ISSUE: Wind Band Extensions
Wind band extensions found off of fans. NTAB placed back on fans.



KEF-3
Fan Balanced, Setpoint marked



KEF-2
Speed controller marked

BUILDING PRESSURE SET POINTS

Assigned Organization: National TAB

Status: Not Submitted

Asset:

INITIAL AIRFLOWS:	
OA RTU-1 (DINING)	510
OA RTU-2 (DINING)	547
OA RTU-3 (KITCHEN)	946
KEF-1 (GRIDDLE)	2657
KEF-2 (FRYER)	782
KEF-3 (DISH)	551
EF-1 (RESTROOM)	74
EF-2 (RESTROOM)	52
MAU-1	2491
TOTAL EXHUAUST	4116
TOTAL SUPPLY	4494
NET AIRFLOW	378
BUILDING PRESSURE (in W.C.)	
INITIAL BUILDING PRESSURE	-0.008" [1]
FINAL BUILDING PRESSURE	0.006"

Notes/Comments:

[1] TIME OF DAY INCORRECT ON THERMOSTATS, NOT IN OCCUPIED MODE. CORRECTED SETTINGS.

PM CHECKLIST FOOD EQUIPMENT

Assigned Organization: National TAB

Status: Not Submitted

Asset:

WALK-IN PM CHECKLIST	
Are the doors clear of frost build up?	Yes
Are the evaporators clear of frost build up?	Yes
Are the walls clear of frost build up?	Yes
Are the penetrations and lines clear of frost build up?	Yes
Are all evaporator fans running?	Yes
GENERAL FOOD EQUIPMENT	
Are the units clear of frost?	Yes
Are the prefilters on the condensers clear/replaced?	Yes
Are the condensate drains clear of debris (If applicable)?	Yes

Notes/Comments:

PM CHECKLIST HEATING SEASON

Assigned Organization: National TAB

Status: Not Submitted

Asset:

RTU HEATING SEASON CHECKLIST	
Wipe out and remove debris from the heater section?	Yes
Heat exchanger free of cracks?	Yes
All units properly go into heating?	No, RTU-1 does not go into heating properly.
Thermostat turn on all stages of heating?	Yes, all units put into heat stage. RTU-1 did not ignite.
MAU HEATING SEASON CHECKLIST	
All units properly go into heating?	Yes
Wipe out and remove debris from the heater section?	Yes
Inlet and discharge thermostat setpoints at the properly settings?	Yes

Notes/Comments:

PM CHECKLIST HVAC

Assigned Organization: National TAB

Status: Not Submitted

Asset:

HOOD CHECKLIST	
Smoke test capture - Perimeter of hood	100%
Smoke test capture - Top of cooking surface	100%
Hoods turn on by switch or HMI?	HMI
Are the hoods "FAN ON BY BUTTON" upon arrival?	Yes
RTU PM CHECKLIST	
Outside air fliter clean?	Yes
Evaporator Filters Replaced?	Yes
Evaporator Coil cleaned?	Yes
Condenser cleaned? (Seasonal)	Yes
Belt replaced in last 6 months?	Yes
Motor ventilation cleared of dust and debris?	Yes
Is there a return filter on the Dining Room RTU return duct? If so what type?	No, return filters on kitchen returns.
Is the return filter clean on the Dinning Rooms RTU Dinning duct?	NA.
MAU PM CHECKLIST	
Outside air fliter clean?	Yes
Belt replaced in last 6 months?	Yes
EXHUAST FAN PM CHECKLIST	
Motor ventilation cleared of dust and debris?	Yes
Belt replaced in last 6 months?	Yes
Motor ventilation cleared of dust and debris?	Yes
THERMOSTAT CHECKLIST	
Are the thermostats in fan "ON" position upon arrival?	Date/Time incorrect, corrected by NTAB.
Are the thermostats programed?	Yes
ADDITIONAL	
Manager on Duty at time of completion.	Jennifer
Is the roof free of debris? if not what was left on the roof?	Store hose.

Notes/Comments:

Project Summary

The purpose of the visit is to perform preventative maintenance for the store. We change belts and filters, clean evaporators and condenser, and check refrigeration and heating cycle where possible. We also, check and set exhaust, outside air, and make up air coming in out of the build to the engineer's design and/or to make the space as comfortable and healthy as possible. All of this ensures a healthy and comfortable space, extends service life of units, and reduces the number of future repairs by prevention.

Freddy's locations for preventative maintenance are done in a pair. This allows two stores preventative maintenance to be completed in one day. To accomplish this the food equipment will be cleaned every 6 months. So, every other visit to a store the food equipment will be evaluated and cleaned. Food equipment was evaluated this trip.

RTUs: There evaporator coil was rinsed off and cleaned. During warmer months a self-cleaning chemical is sprayed on the evaporator. The outside air filters were rinsed off to remove any dirty, so the unit stays at the designated outside air set point. Based on static pressures, amps, and fan rpm it shows that the total supply has not changed since the last test and balance.

MAU: The intake filters had slight dirt accumulation. They were washed.

All exhaust fans were cleaned out on the roof. The vents to the motor were cleaned so they can vent properly.

Food equipment condensers were cleaned. The Walk-In evaporator were cleaned. All equipment is in good health unless stated in the Recommendation List.

All issues found are reported in the Recommendation list at the start of the report.

System/Unit: AHU/RTU

Asset: RTU1

AREA: DINING

Unit Data		
	Design	Actual
MFG	LENNOX	TRANE
Model Num	KGA092S4B	YSC092F3RMA1 VH
Serial Num	-	161513051L
Num OA Filters 1	-	1
OA Filter Size 1	-	15X35
Num Final Filter 1	-	4
Final Filter Size 1	-	20X25X2
Num Final Filter 2	-	NA
Final Filter Size 2	-	NA

Motor Data		
	Design	Actual
Motor MFG	-	MARATHON
Frame	-	56
Horsepower	-	3
Motor Rpm	-	1725
Phase	-	3
Rated Voltage	-	208-230/460
Rated Amperage	-	3.6

Drive Data		
	Design	Actual
Num of Belts	-	1
Belt Size	-	AX35
Belt Alignment	-	VERIFIED

Gas Heat		
	Design	Actual
Gas Type	-	NATURAL GAS
Burner Type	-	BURNER TUBES
Heater Operates (y/n)	-	NO [1]

Completed By: Michael McDonnell on 11/22/2021

Notes: [1] HEAT NOT OPERATIONAL. UNIT ATTEMPTS TO GO INTO HEATING STAGE THROUGH JUMP AND THERMOSTAT, DOES NOT IGNITE GAS. SERVICE SUGGESTED.

Test Data		
	Design	Actual
SF RPM	719	714
OA CFM	548	510
RL Voltage	-	201/202/201
RL Amperage	-	2.9/2.8/2.8

Performance Data		
	Design	Actual
MA Plenum SP	-	-0.21"
Fan Suction SP	-	-0.31"
Fan Discharge SP	-	0.41"
Total ESP	0.60"	0.62"
Fan Total SP	-	0.72"
MA Temp (db/wb)	-	[1]
SA Temp (db/wb)	-	[1]

General		
	Design	Actual
Unit free of Damage	-	YES
Unit Completely Assembled	-	YES
Unit Leveled	-	YES
Curb & Unit Installed Air Tight	-	YES
Controls Complete	-	YES
Unit Filters Clean	-	YES
Evap Coil Clean	-	YES
Evap Coil Free of Frost	-	YES
Condensor Coil Clean	-	YES
Condensor Fins Straight	-	YES
Refr Sight Glass Dry	-	NA
Condensate Drain Installed	-	YES
Crankcase Heaters Operate	-	YES

System/Unit: AHU/RTU

Asset: RTU2

AREA: DINING

Unit Data		
	Design	Actual
MFG	LENNOX	TRANE
Model Num	KGA092S4B	YSC092F3RMA1 VH
Serial Num	-	161513065L
Num OA Filters 1	-	1
OA Filter Size 1	-	15X35
Num Final Filter 1	-	4
Final Filter Size 1	-	20X25X2
Num Final Filter 2	-	NA
Final Filter Size 2	-	NA

Motor Data		
	Design	Actual
Motor MFG	-	MARATHON
Frame	-	56
Horsepower	-	3
Motor Rpm	-	1725
Phase	-	3
Rated Voltage	-	200-230/460
Rated Amperage	-	3.6

Drive Data		
	Design	Actual
Num of Belts	-	1
Belt Size	-	AX35
Belt Alignment	-	VERIFIED

Gas Heat		
	Design	Actual
Gas Type	-	NATURAL GAS
Burner Type	-	BURNER TUBES
Heater Operates (y/n)	-	YES

Test Data		
	Design	Actual
SF RPM	665	662
OA CFM	562	547
RL Voltage	-	201/202/203
RL Amperage	-	2.6/2.7/2.5

Performance Data		
	Design	Actual
MA Plenum SP	-	-0.58"
Fan Suction SP	-	-0.71"
Fan Discharge SP	-	0.20"
Total ESP	0.60"	0.78"
Fan Total SP	-	0.91"
MA Temp (db/wb)	-	74/62
SA Temp (db/wb)	-	95/68

General		
	Design	Actual
Unit free of Damage	-	YES
Unit Completely Assembled	-	YES
Unit Leveled	-	YES
Curb & Unit Installed Air Tight	-	YES
Controls Complete	-	YES
Unit Filters Clean	-	YES
Evap Coil Clean	-	YES
Evap Coil Free of Frost	-	YES
Condensor Coil Clean	-	YES
Condensor Fins Straight	-	YES
Refr Sight Glass Dry	-	NA
Condensate Drain Installed	-	YES
Crankcase Heaters Operate	-	YES

Completed By: Michael McDonnell on 11/22/2021

Notes: Store already has additional round of filters. Request 20X20X1 filters for kitchen returns

System/Unit: AHU/RTU

Asset: RTU3

AREA: KITCHEN

Unit Data		
	Design	Actual
MFG	LENNOX	TRANE
Model Num	KGA150S4B	YSD15F3RHA00 PM*OA
Serial Num	-	1630727D
Num OA Filters 1	-	1
OA Filter Size 1	-	16X60
Num Final Filter 1	-	4
Final Filter Size 1	-	20X25X2
Num Final Filter 2	-	2
Final Filter Size 2	-	20X20X2

Motor Data		
	Design	Actual
Motor MFG	-	MARATHON
Frame	-	56HZ
Horsepower	-	3
Motor Rpm	-	1725
Phase	-	3
Rated Voltage	-	208-230/460
Rated Amperage	-	9.4

Drive Data		
	Design	Actual
Num of Belts	-	1
Belt Size	-	BX62
Belt Alignment	-	VERIFIED

Gas Heat		
	Design	Actual
Gas Type	-	NATURAL GAS
Burner Type	-	BURNER TUBES
Heater Operates (y/n)	-	YES

Completed By: Michael McDonnell on 11/22/2021

Notes:

Test Data		
	Design	Actual
SF RPM	803	798
OA CFM	969	946
RL Voltage	-	201/202/201
RL Amperage	-	5.9/6.0/6.1

Performance Data		
	Design	Actual
MA Plenum SP	-	-0.18
Fan Suction SP	-	-0.36
Fan Discharge SP	-	0.32"
Total ESP	0.86"	0.50"
Fan Total SP	-	0.68"
MA Temp (db/wb)	-	74/68
SA Temp (db/wb)	-	97/70

General		
	Design	Actual
Unit free of Damage	-	YES
Unit Completely Assembled	-	YES
Unit Leveled	-	YES
Curb & Unit Installed Air Tight	-	YES
Controls Complete	-	YES
Unit Filters Clean	-	YES
Evap Coil Clean	-	YES
Evap Coil Free of Frost	-	YES
Condensor Coil Clean	-	YES
Condensor Fins Straight	-	YES
Refr Sight Glass Dry	-	NA
Condensate Drain Installed	-	YES
Crankcase Heaters Operate	-	YES

System/Unit: FAN - Supply

Asset: MAU1

AREA: HOOD SUPPLY

Unit Data		
	Design	Actual
MFG	CAPTIVE-AIRE	CAPTIVE-AIRE
Model Num	A1-D.250-G10	A1-D.250-G10
Serial Num	-	2510431
Num Filters Size 1	-	3
Filter Size 1	-	16X20X2
Num Filters Size 2	-	NA
Filter Size 2	-	NA

Motor Data		
	Design	Actual
Motor MFG	-	WEG
Frame	-	56HZ
Horsepower	-	2
Motor Rpm	-	1740
Phase	-	3
Voltage (rated)	-	208-230/460
Amperage (rated)	-	5.9
Service Factor	-	5.9

Drive Data		
	Design	Actual
Num of Belts	-	1
Belt Size	-	AX37
Belt Alignment Verified	-	VERIFIED

Gas Heat		
	Design	Actual
Gas Type	-	NATURAL GAS
Burner Type	-	DIRECT FIRE
Heater Operates (y/n)	-	YES
Flame Status (pass/fail)	-	PASS
Inlet Air Temp SetPt	-	55
Discharge Air Temp SetPt	-	60
Air Flow Switch SP Actual	-	0.35"

Completed By: Michael McDonnell on 11/22/2021

Notes:

Test Data		
	Design	Actual
CFM	2451	2491
SF RPM	1385	1416
Motor RPM	-	1740
RL Voltage	-	199/200/200
RL Amperage	-	3.8/3.6/3.7

General		
	Design	Actual
Unit free of Damage	-	YES
Curb & Unit Installed Air Tight	-	YES
Fan Rotation Correct	-	YES
Fan Belt Condition	-	GOOD
Unit Filters Clean	-	YES

System/Unit: FAN - Exhaust

Asset: EF1

AREA: RESTROOM

Unit Data		
	Design	Actual
MFG	COOK	COOK
Model Num	GC-164	GC-164
Serial Num	-	NA

Test Data		
	Design	Actual
CFM	77	74

Motor Data		
	Design	Actual
Motor MFG	-	BROAN
Horsepower	-	136W
Motor Rpm	-	NL
Phase	-	1
Voltage (rated)	-	120
Amperage (rated)	-	0.40

Completed By: Michael McDonnell on 11/22/2021

Notes:

System/Unit: FAN - Exhaust

Asset: EF2

AREA: RESTROOM

Unit Data		
	Design	Actual
MFG	COOK	COOK
Model Num	GC-164	GC-164
Serial Num	-	NA

Test Data		
	Design	Actual
CFM	50	52

Motor Data		
	Design	Actual
Motor MFG	-	BROAN
Horsepower	-	136W
Motor Rpm	-	NL
Phase	-	1
Voltage (rated)	-	120
Amperage (rated)	-	0.40

Completed By: Michael McDonnell on 11/22/2021

Notes:

System/Unit: FAN - Exhaust

Asset: KEF1

AREA: HOOD 1&2

Unit Data		
	Design	Actual
MFG	CAPTIVE-AIRE	CAPTIVE-AIRE
Model Num	NCA16HPFA	NCA16HPFA
Serial Num	-	2510431
Type	-	UPBLAST
Configuration	-	VERTICAL

Motor Data		
	Design	Actual
Motor MFG	-	WEG
Frame	-	56H
Horsepower	-	1.5
Motor Rpm	-	1760
Phase	-	3
Voltage (rated)	-	208-230/460
Amperage (rated)	-	4.6
Service Factor	-	NL

Drive Data		
	Design	Actual
Num of Belts	-	1
Belt Size	-	AX23
Belt Alignment Verified	-	VERIFIED

Completed By: Michael McDonnell on 11/22/2021

Notes:

Test Data		
	Design	Actual
CFM	2729	2657
Fan RPM	1355	1357
Fan Rotation	-	CCW, CORRECT
Motor RPM	-	1756
RL Voltage	-	201/201/201
RL Amperage	-	3.9/3.9/4.0
Suction ESP	-	-1.12"
Discharge ESP	-	ATM
Total ESP	1.12"	1.12"

System/Unit: FAN - Exhaust

Asset: KEF2

AREA: HOOD 3

Unit Data		
	Design	Actual
MFG	CAPTIVE-AIRE	CAPTIVE-AIRE
Model Num	DU50HFA	DU50HFA
Serial Num	-	2510431
Type	-	UPBLAST
Configuration	-	VERTICAL

Motor Data		
	Design	Actual
Motor MFG	-	HSSA
Frame	-	48Y
Horsepower	-	0.5
Motor Rpm	-	1625
Phase	-	1
Voltage (rated)	-	115
Amperage (rated)	-	8.4
Service Factor	-	NL

Test Data		
	Design	Actual
CFM	724	782
Fan RPM	DD	DD
Fan Rotation	-	CCW, CORRECT
Motor RPM	-	DD
System SetPt	-	86V
RL Voltage	-	86
RL Amperage	-	4.5
Total ESP	0.78"	1.00"
Fan Inlet SP	-	-1.00"
Fan Discharge SP	-	ATM

Completed By: Michael McDonnell on 11/22/2021

Notes:

System/Unit: FAN - Exhaust

Asset: KEF3

AREA: HOOD 4

Unit Data		
	Design	Actual
MFG	CAPTIVE-AIRE	CAPTIVE-AIRE
Model Num	DU30HFA	DU30HFA
Serial Num	-	2510431
Type	-	UPBLAST
Configuration	-	VERTICAL

Motor Data		
	Design	Actual
Motor MFG	-	HSSA
Frame	-	48Y
Horsepower	-	0.25
Motor Rpm	-	1625
Phase	-	1
Voltage (rated)	-	115
Amperage (rated)	-	3.8
Service Factor	-	3.8

Test Data		
	Design	Actual
CFM	525	551
Fan RPM	-	DD
Fan Rotation	-	CCW, CORRECT
Motor RPM	-	DD
System SetPt	-	78V
RL Voltage	-	78
RL Amperage	-	2.6
Total ESP	-	0.30"
Fan Inlet SP	-	-0.30"
Fan Discharge SP	-	ATM

Completed By: Michael McDonnell on 11/22/2021

Notes: [LAST VISIT][1] FAN IS STILL NOT OPERATIONAL. MOTOR IS BAD. NOTIFIED REGIONAL MANAGER.
[1] SPEED CONTROLLER REPAIRED. MARKED SPEED CONTROLLER, BALANCED TO DESIGN.

System/Unit: COIL - DX

Asset: DXC1

AREA: WALK-IN

Unit Data		
	Design	Actual
MFG	NA	INTERNATION COLD STORAGE
Model Num	NA	IDT1023
Serial Num	-	109481

General		
	Design	Actual
Evap Coil Clean	-	YES
Evap Coil Fins Straight	-	YES
Evap Coil Free of Frost	-	YES
Condensor Coil Clean	-	YES
Condensor Fins Straight	-	YES
Condensate Drain Installed	-	NA
Crankcase Heaters Operate	-	NA

Completed By: Michael McDonnell on 11/22/2021

Notes:

System/Unit: COIL - DX

Asset: DXC2

AREA: MEAT COOLER 1

Unit Data		
	Design	Actual
MFG	NA	HOSHIZAKI AMERICA
Model Num	NA	CRMR27-12M
Serial Num	-	F606190

General		
	Design	Actual
Evap Coil Clean	-	YES
Evap Coil Fins Straight	-	YES
Evap Coil Free of Frost	-	YES
Condensor Coil Clean	-	YES
Condensor Fins Straight	-	YES
Condensate Drain Installed	-	YES
Crankcase Heaters Operate	-	NA

Completed By: Michael McDonnell on 11/22/2021

Notes:

System/Unit: COIL - DX

Asset: DXC3

AREA: MEAT COOLER 2

Unit Data		
	Design	Actual
MFG	NA	HOSHIZAKI AMERICA
Model Num	NA	CRMR27-12M
Serial Num	-	F60627D

General		
	Design	Actual
Evap Coil Clean	-	YES
Evap Coil Fins Straight	-	YES
Evap Coil Free of Frost	-	YES
Condensor Coil Clean	-	YES
Condensor Fins Straight	-	YES
Condensate Drain Installed	-	YS
Crankcase Heaters Operate	-	NA

Completed By: Michael McDonnell on 11/22/2021

Notes:

System/Unit: COIL - DX

Asset: DXC4

AREA: PREP TABLE 1

Unit Data		
	Design	Actual
MFG	NA	RANDELL
Model Num	NA	9040K-7
Serial Num	-	W518810-1

General		
	Design	Actual
Evap Coil Clean	-	YES
Evap Coil Fins Straight	-	YES
Evap Coil Free of Frost	-	YES
Condensor Coil Clean	-	YES
Condensor Fins Straight	-	YES
Condensate Drain Installed	-	YES
Crankcase Heaters Operate	-	NA

Completed By: Michael McDonnell on 11/22/2021

Notes:

System/Unit: COIL - DX

Asset: DXC5

AREA: FRYER REEZER

Unit Data		
	Design	Actual
MFG	NA	HOSHIZAKI AMERICA
Model Num	NA	CF1S-HS
Serial Num	-	F60096B

General		
	Design	Actual
Evap Coil Clean	-	YES
Evap Coil Fins Straight	-	YES
Evap Coil Free of Frost	-	YES
Condensor Coil Clean	-	YES
Condensor Fins Straight	-	SYES
Condensate Drain Installed	-	NA
Crankcase Heaters Operate	-	NA

Completed By: Michael McDonnell on 11/22/2021

Notes:

System/Unit: COIL - DX

Asset: DXC6

AREA: SUNDAE PREP

Unit Data		
	Design	Actual
MFG	NA	HOSHIZAKI AMERICA
Model Num	NA	CR1S-HS
Serial Num	-	F50053A

General		
	Design	Actual
Evap Coil Clean	-	YES
Evap Coil Fins Straight	-	YES
Evap Coil Free of Frost	-	YES
Condensor Coil Clean	-	YES
Condensor Fins Straight	-	YES
Condensate Drain Installed	-	NA
Crankcase Heaters Operate	-	NA

Completed By: Michael McDonnell on 11/22/2021

Notes: