



SUBMITTAL

Project

Nike - Glenarden, MD

Date

Tuesday, February 1, 2022

EXCLUSIONS and/or CLARIFICATIONS:

- System Vu included for all GC units. RTU OPEN for HC Units
- Units are out of stock and lead time is 16 weeks. Lead time is subject to change prior to sale.
- MERV Filters not included
- Temporary Thermostats included
- Smoke detector and CO2 sensor not included
- Harness kit for GC units will be provided
- RTU 2 provided with 14 inch curb
- Please verify submittal for all units meets required staging and circuiting among other necessary design attributes

INSTALLING CONTRACTOR IS RESPONSIBLE FOR VERIFYING EQUIPMENT BEING SUPPLIED MATCHES FINAL BID DOCUMENTS and/or REPLACEMENT EQUIPMENT NEEDED FOR STORE (i.e. voltage, size, etc). Carrier will not be responsible for installation and/or removal of any incorrect units. Please report any discrepancies immediately

Table Of Contents

Project: Nike - Glenarden, MD
Prepared By:

02/01/2022
08:29PM

| | |
|--------------------------|-----------|
| RTU 1 | 3 |
| Unit Report | 4 |
| Certified Drawing..... | 5 |
| Performance Summary..... | 8 |
| RTU 2 | 11 |
| Unit Report | 12 |
| Certified Drawing..... | 13 |
| Performance Summary..... | 16 |
| RTU 3-5 | 19 |
| Unit Report | 20 |
| Certified Drawing..... | 21 |
| Performance Summary..... | 24 |
| RTU 6 | 28 |
| Unit Report | 29 |
| Certified Drawing..... | 30 |
| Performance Summary..... | 33 |

RTU 1

**Tag Cover Sheet
Unit Report
Certified Drawing
Performance Report**

Unit Report For RTU 1

Project: Nike - Glenarden, MD
 Prepared By:

02/01/2022
 08:29PM

Unit Parameters

Unit Model:..... **48GCDM04A2Q6-3W1C0**
 Unit Size:..... **04 (3 Tons)**
 Volts-Phase-Hertz: **460-3-60**
 Heating Type:..... **Gas**
 Duct Cfg: **Vertical Supply / Vertical Return**
 Low Heat
 Two Stage Cooling Models

Dimensions (ft. in.) & Weight (lb.) ***

Unit Length:..... **6' 2.375"**
 Unit Width:..... **3' 10.625"**
 Unit Height: **2' 9.375"**
 *** Total Operating Weight: **572 lb**

*** Weights and Dimensions are approximate. Weight does not include unit packaging. Approximate dimensions are provided primarily for shipping purposes. For exact dimensions and weights, refer to appropriate product data catalog.

Lines and Filters

Gas Line Size:..... **1/2**
 Condensate Drain Line Size: **3/4**
 Return Air Filter Type: **Throwaway**
 Return Air Filter Quantity:..... **2**
 Return Air Filter Size:..... **16 x 25 x 2**

Selection includes construction throwaway filter into the base fan curve. This filter is not MERV Rated.

Unit Configuration

Direct Drive - EcoBlue - Medium Static
 E-coat Al/Cu - E-coat Al/Cu - Louvered Hail Guards
 SystemVu Controls
 Enthalpy Ultra Low Leak Econo w/Baro Relief
 Unpowered Convenience Outlet
 Non-Fused Disconnect
 Standard Packaging

Warranty Information

1-Year parts(std.)
 5-Year compressor parts(std.)
 10-Year heat exchanger - Aluminized(std.)

No optional warranties were selected.

NOTE: Please see Warranty Catalog 500-089 for explanation of policies and ordering methods.

Ordering Information

| Part Number | Description | Quantity |
|------------------------------------|---|----------|
| 48GCDM04A2Q6-3W1C0 | Rooftop Unit | 1 |
| | Base Unit | |
| | Direct Drive - EcoBlue - Medium Static | |
| | E-coat Al/Cu - E-coat Al/Cu - Louvered Hail Guards | |
| | Unpowered Convenience Outlet | |
| | Non-Fused Disconnect | |
| | SystemVu controller, Ultra LOW LEAK EconoMiSer2 enthalpy economizer with barometric relief. SystemV | |
| | | |
| | | |
| Field Installed Accessories | | |
| 33CSENSEN | Enthalpy Transmitter | 1 |

Certified Drawing for RTU 1

Project: Nike - Glenarden, MD
Prepared By:

02/01/2022
08:29PM

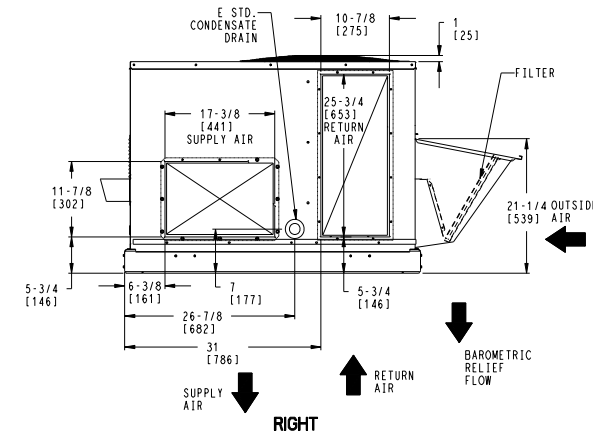
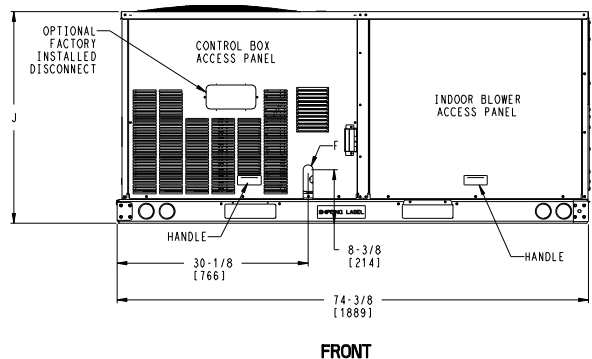
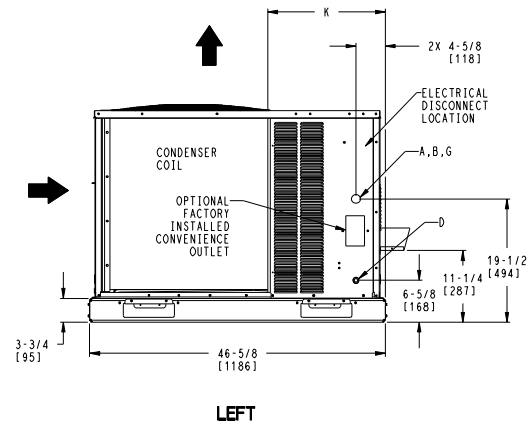
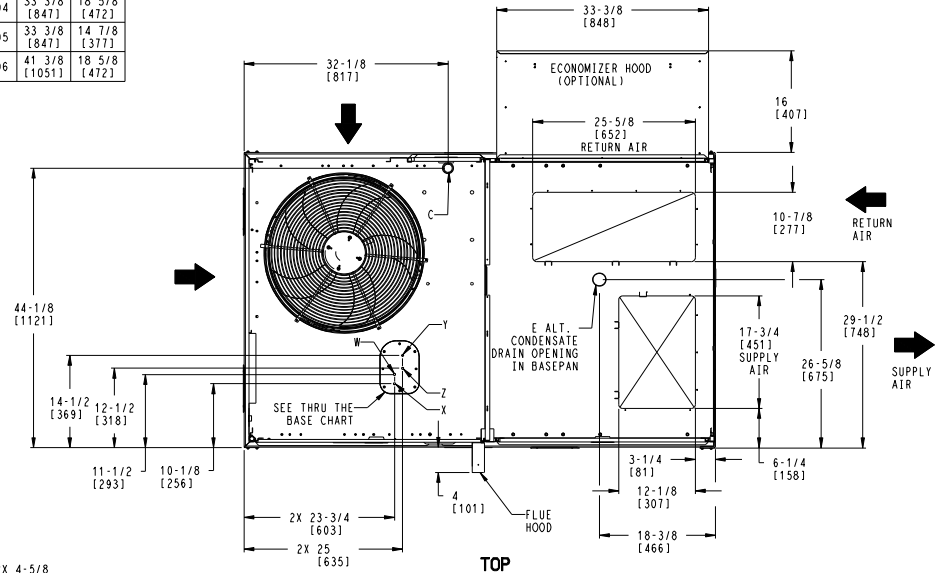
- NOTES:
1. DIMENSIONS ARE IN INCHES. DIMENSIONS IN [] ARE IN MILLIMETERS.
 2. CENTER OF GRAVITY
 3. DIRECTION OF AIR FLOW
 4. ALL VIEW DRAWN USING 3RD ANGLE

| UNIT | J | K |
|----------|---------------|--------------|
| 48GC**04 | 33 3/8 [847] | 18 5/8 [472] |
| 48GC**05 | 33 3/8 [847] | 14 7/8 [377] |
| 48GC**06 | 41 3/8 [1051] | 18 5/8 [472] |

Carrier United Technologies THIS DOCUMENT IS THE PROPERTY OF UTC CLIMATE, CONTROLS & SECURITY AND IS DELIVERED UPON THE EXPRESS CONDITION THAT THE CONTENTS WILL NOT BE DISCLOSED OR USED WITHOUT WRITTEN CONSENT. SUBMISSION OF THESE DRAWINGS OR DOCUMENTS DOES NOT CONSTITUTE PART PERFORMANCE OR ACCEPTANCE OF CONTRACT.

| CONNECTION SIZES | |
|------------------|---|
| A | 1 3/8" [35] DIA FIELD POWER SUPPLY HOLE |
| B | 2" [50] DIA POWER SUPPLY KNOCKOUT |
| C | 1 3/4" [51] DIA GAUGE ACCESS PLUG |
| D | 7/8" [22] DIA FIELD CONTROL WIRING HOLE |
| E | 3/4"-14 NPT CONDENSATE DRAIN |
| F | 1/2"-14 NPT GAS CONNECTION |
| G | 2 1/2" [64] DIA POWER SUPPLY KNOCK-OUT |

| THRU-THE-BASE CHART THESE HOLES REQUIRED FOR USE CRBTWR008A00, 009A00 | | | |
|---|-------------------|-------------------------|---------------|
| THREADED CONDUIT SIZE | WIRE USE | REQ'D HOLE SIZES (MAX.) | |
| W | 1/2" | 115V | 7/8" [22.2] |
| X | 1/2" | 24V | 7/8" [22.2] |
| Y | 3/4" | POWER | 1-1/8" [28.6] |
| Z* | (009A00) 1/2" FPT | GAS | 1-1/8" [28.6] |
| FOR "THRU-THE-BASEPAN" FACTORY OPTION, FITTINGS FOR ONLY X, Y, & Z ARE PROVIDED | | | |
| * (008A00) PROVIDES 3/4" FPT THRU CURB FLANGE & FITTING. | | | |



| | | | | | | |
|--------------------|--------|----------|------------|--|------------|-------|
| ITC CLASSIFICATION | SHEET | DATE | SUPERCEDES | 48GC 04-06 SINGLE PACKAGE ELECTRICAL COOLING WITH GAS HEAT | 48TC003099 | REV B |
| U.S. ECCN: NSR | 1 OF 3 | 09/07/18 | 08/03/18 | | | |

Certified Drawing for RTU 1

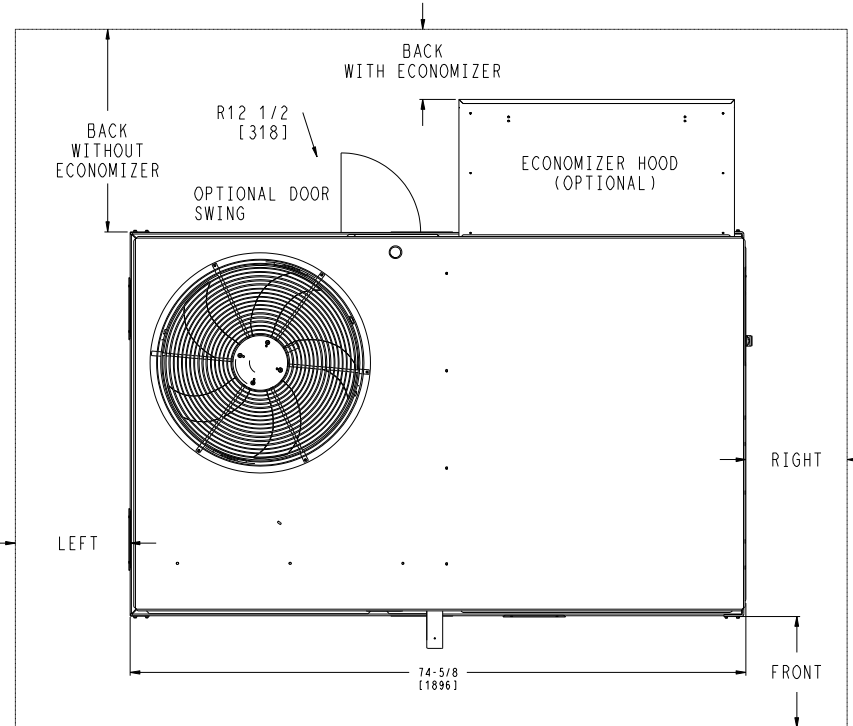
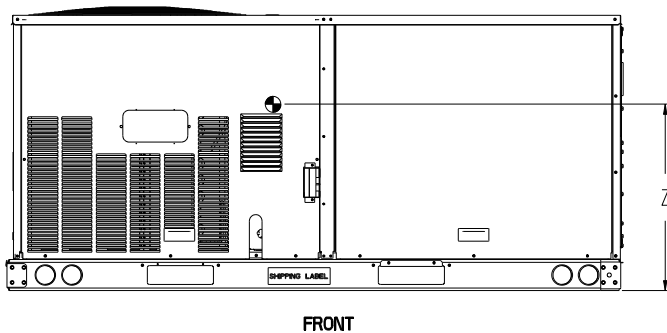
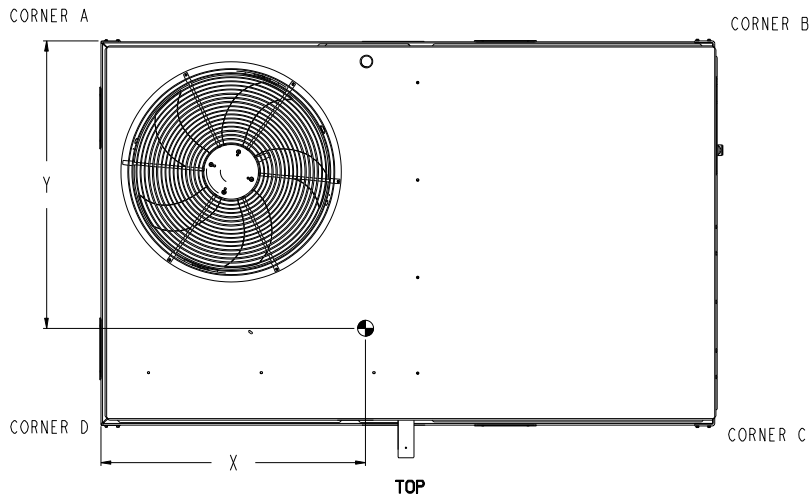
Project: Nike - Glenarden, MD
Prepared By:

02/01/2022
08:29PM

| UNIT | STD. UNIT WEIGHT * | | CORNER WEIGHT (A) | | CORNER WEIGHT (B) | | CORNER WEIGHT (C) | | CORNER WEIGHT (D) | | C.G. | | | HEIGHT |
|----------|--------------------|-----|-------------------|-----|-------------------|-----|-------------------|-----|-------------------|-----|--------------|--------------|--------------|--------|
| | LBS. | KG. | LBS. | KG. | LBS. | KG. | LBS. | KG. | LBS. | KG. | X | Y | Z | |
| 48GC**04 | 513 | 233 | 131 | 59 | 127 | 58 | 125 | 57 | 130 | 59 | 36 1/2 [927] | 23 1/4 [591] | 18 1/4 [464] | |
| 48GC**05 | 555 | 252 | 142 | 64 | 137 | 62 | 135 | 61 | 141 | 64 | 36 1/2 [927] | 23 1/4 [591] | 18 [457] | |
| 48GC**06 | 600 | 272 | 161 | 73 | 151 | 68 | 140 | 64 | 149 | 68 | 36 1/2 [914] | 22 1/2 [572] | 19 3/8 [492] | |

* - STANDARD UNIT WEIGHT IS WITH LOW GAS HEAT AND WITHOUT PACKAGING.
FOR OTHER OPTINS AND ACCESSORIES REFER TO THE PRODUCT DATA CATALOG.

Carrier THIS DOCUMENT IS THE PROPERTY OF UTC CLIMATE CONTROLS & SECURITY AND IS DELIVERED UPON THE EXPRESS CONDITION THAT THE CONTENTS WILL NOT BE DISCLOSED OR USED WITHOUT WRITTEN CONSENT. SUBMISSION OF THESE DRAWINGS OR DOCUMENTS DOES NOT CONSTITUTE PART PERFORMANCE OR ACCEPTANCE OF CONTRACT.



NOTES:

- FOR ALL MINIMUM CLEARANCES LOCAL CODES OR JURISDICTIONS MAY PREVAIL.


| SURFACE | CLEARANCE | | OPERATING CLEARANCE |
|-------------|---------------------------------|------------------------------------|---------------------|
| | SERVICE WITH CONDUCTIVE BARRIER | SERVICE WITH NONCONDUCTIVE BARRIER | |
| FRONT | 48 [1219mm] | 36 [914mm] | 18 [457mm] |
| LEFT | 48 [1219mm] | 42 [1067mm] | 18 [457mm] |
| BACK | 48 [1219mm] | 42 [1067mm] | 18 [457mm] |
| BACK W/HOOD | 36 [914mm] | 36 [914mm] | 18 [457mm] |
| RIGHT | 36 [914mm] | 36 [914mm] | 18 [457mm] |
| TOP | 72 [1829mm] | 72 [1829mm] | 72 [1829mm] |

| | | | | | | |
|-------------------------------------|-----------------|------------------|------------------------|--|------------|----------|
| ITC CLASSIFICATION U.S. ECCN:NSR | SHEET 2 OF 3 | DATE 09/07/18 | SUPERCEDES 08/03/18 | 48GC 04-06 SINGLE PACKAGE ELECTRICAL COOLING WITH GAS HEAT | 48TC003099 | REV B |
|-------------------------------------|-----------------|------------------|------------------------|--|------------|----------|

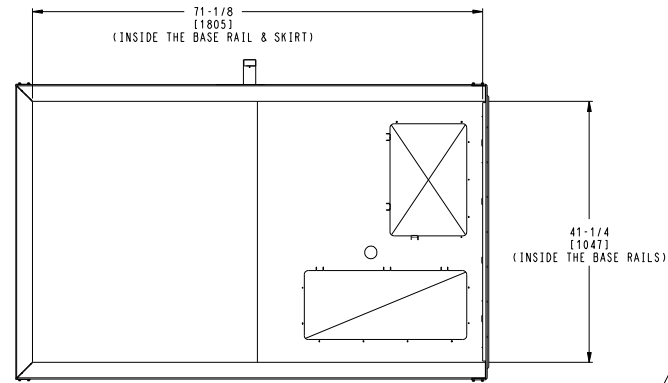
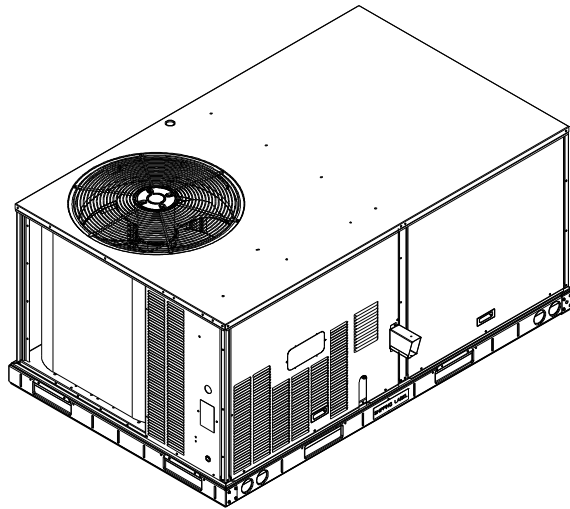
Certified Drawing for RTU 1

Project: Nike - Glenarden, MD
Prepared By:

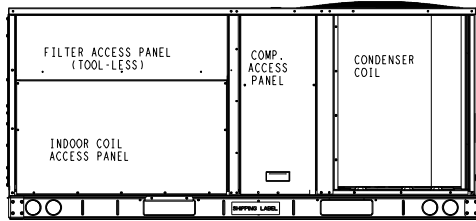
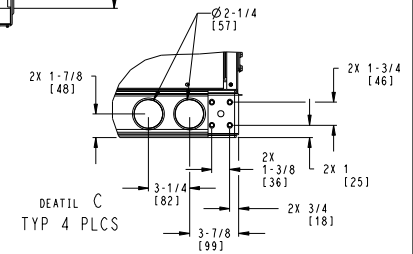
02/01/2022
08:29PM


 THIS DOCUMENT IS THE PROPERTY OF UTC CLIMATE, CONTROLS & SECURITY AND IS DELIVERED UPON THE EXPRESS CONDITION THAT THE CONTENTS WILL NOT BE DISCLOSED OR USED WITHOUT WRITTEN CONSENT.

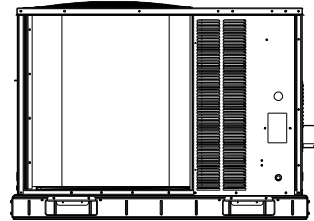
 SUBMISSION OF THESE DRAWINGS OR DOCUMENTS DOES NOT CONSTITUTE PART PERFORMANCE OR ACCEPTANCE OF CONTRACT.



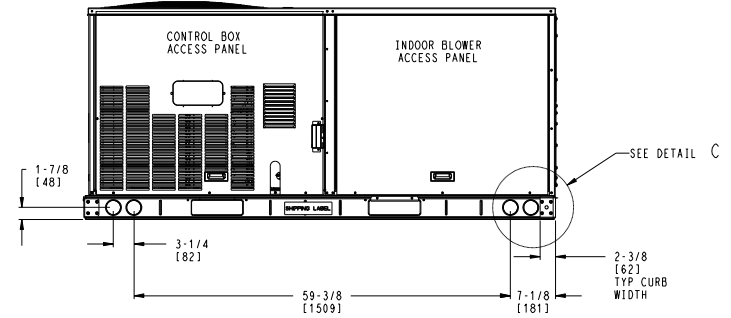
INSIDE BASERAIL DIMENSIONS
BOTTOM



BACK



LEFT



FRONT

| | | | | | | |
|--------------------|--------|----------|------------|--|-----------|-----|
| ITC CLASSIFICATION | SHEET | DATE | SUPERCEDES | 48GC 04-06 SINGLE PACKAGE ELECTRICAL COOLING WITH GAS HEAT | 48TC03099 | REV |
| U.S. ECCN:NSR | 3 OF 3 | 09/07/18 | 08/03/18 | | | B |

Performance Summary For RTU 1

Project: Nike - Glenarden, MD
Prepared By:

02/01/2022
08:29PM

Part Number:48GCDM04A2Q6-3W1C0

ARI SEER:..... 16.10

Base Unit Dimensions

Unit Length:..... 74.4 in
Unit Width: 46.6 in
Unit Height: 33.4 in

Operating Weight

Base Unit Weight: 513 lb
E-coat Al/Cu - E-coat Al/Cu - Louvered Hail Guards:..... 13 lb
SystemVu Controls: 2 lb
Enthalpy Ultra Low Leak Econo w/Baro Relief: 35 lb
Unpowered Convenience Outlet: 4 lb
Non-Fused Disconnect:..... 5 lb

Total Operating Weight: 572 lb

Unit

Unit Voltage-Phase-Hertz: 460-3-60
Air Discharge:..... Vertical
Fan Drive Type:..... Vane Axial
Actual Airflow: 1200 CFM
Site Altitude:..... 282 ft

Cooling Performance

Condenser Entering Air DB:..... 95.0 F
Evaporator Entering Air DB:..... 76.3 F
Evaporator Entering Air WB: 65.5 F
Entering Air Enthalpy: 30.44 BTU/lb
Evaporator Leaving Air DB:..... 58.6 F
Evaporator Leaving Air WB: 56.4 F
Evaporator Leaving Air Enthalpy:..... 24.09 BTU/lb
Gross Cooling Capacity: 33.94 MBH
Gross Sensible Capacity:..... 22.64 MBH
Compressor Power Input: 2.46 kW
Coil Bypass Factor: 0.128

Heating Performance

Heating Airflow: 1200 CFM
Entering Air Temp: 58.3 F
Leaving Air Temp: 100.4 F
Gas Heating Input Capacity: 50.0 / 67.0 MBH
Gas Heating Output Capacity: 40.0 / 54.0 MBH
Temperature Rise: 42.1 F
Thermal Efficiency (%):..... 81.0

Supply Fan

External Static Pressure:..... 0.80 in wg
Options / Accessories Static Pressure
Economizer:..... 0.04 in wg
Total Application Static (ESP + Unit Opts/Acc.): 0.84 in wg
Fan RPM:..... 1856
Fan Power:..... 0.46 BHP
NOTE: Selected IFM RPM Range: 1129 - 2190

Selection includes construction throwaway filter into the base fan curve. This filter is not MERV Rated.

Electrical Data

Voltage Range: 414 - 506

Performance Summary For RTU 1

Project: Nike - Glenarden, MD
Prepared By:

02/01/2022
08:29PM

| | |
|--|----------------|
| Compressor #1 RLA:..... | 5.7 |
| Compressor #1 LRA:..... | 38 |
| Indoor Fan Motor Type:..... | MED |
| Indoor Fan Motor FLA:..... | 1.2 |
| Combustion Fan Motor FLA (ea):..... | 0.25 |
| Power Supply MCA:..... | 10 |
| Power Supply MOCP (Fuse or HACR):..... | 15 |
| Disconnect Size FLA:..... | 9 |
| Disconnect Size LRA:..... | 42 |
| Electrical Convenience Outlet:..... | None |
| Outdoor Fan [Qty / FLA (ea)]:..... | 1 / 0.8 |

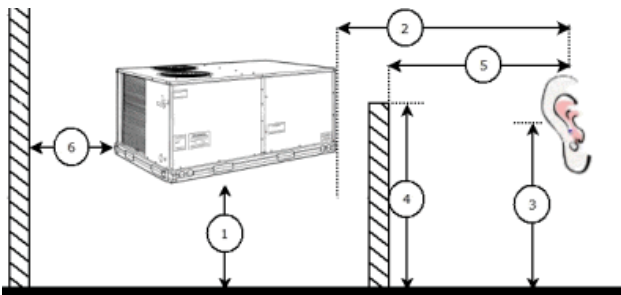
Control Panel SCCR: 5kA RMS at Rated Symmetrical Voltage

Acoustics

Sound Power Levels, db re 10E-12 Watts

| | Discharge | Inlet | Outdoor |
|----------------|-----------|----------|----------|
| 63 Hz | 90.9 | 84.8 | 85.6 |
| 125 Hz | 82.4 | 77.5 | 84.7 |
| 250 Hz | 76.2 | 68.5 | 80.5 |
| 500 Hz | 67.7 | 61.1 | 76.0 |
| 1000 Hz | 65.0 | 63.4 | 72.4 |
| 2000 Hz | 62.3 | 54.7 | 68.0 |
| 4000 Hz | 57.9 | 48.5 | 62.8 |
| 8000 Hz | 56.5 | 42.7 | 59.3 |
| A-Weighted | 73.5 | 68.1 | 79.0 |

Advanced Acoustics



Advanced Acoustics Parameters

- 1. Unit height above ground: **30.0** ft
- 2. Horizontal distance from unit to receiver: **50.0** ft
- 3. Receiver height above ground: **5.7** ft
- 4. Height of obstruction: **0.0** ft
- 5. Horizontal distance from obstruction to receiver: **.00** ft
- 6. Horizontal distance from unit to obstruction: **0.0** ft

Detailed Acoustics Information

| Octave Band Center Freq. Hz | 63 | 125 | 250 | 500 | 1k | 2k | 4k | 8k | Overall |
|-----------------------------|------|------|------|------|------|------|------|------|----------|
| A | 85.6 | 84.7 | 80.5 | 76.0 | 72.4 | 68.0 | 62.8 | 59.3 | 89.2 Lw |
| B | 59.4 | 68.6 | 71.9 | 72.8 | 72.4 | 69.2 | 63.8 | 58.2 | 78.5 LwA |
| C | 53.2 | 52.3 | 48.1 | 43.6 | 40.0 | 35.6 | 30.4 | 26.9 | 56.8 Lp |

Performance Summary For RTU 1

Project: Nike - Glenarden, MD
 Prepared By:

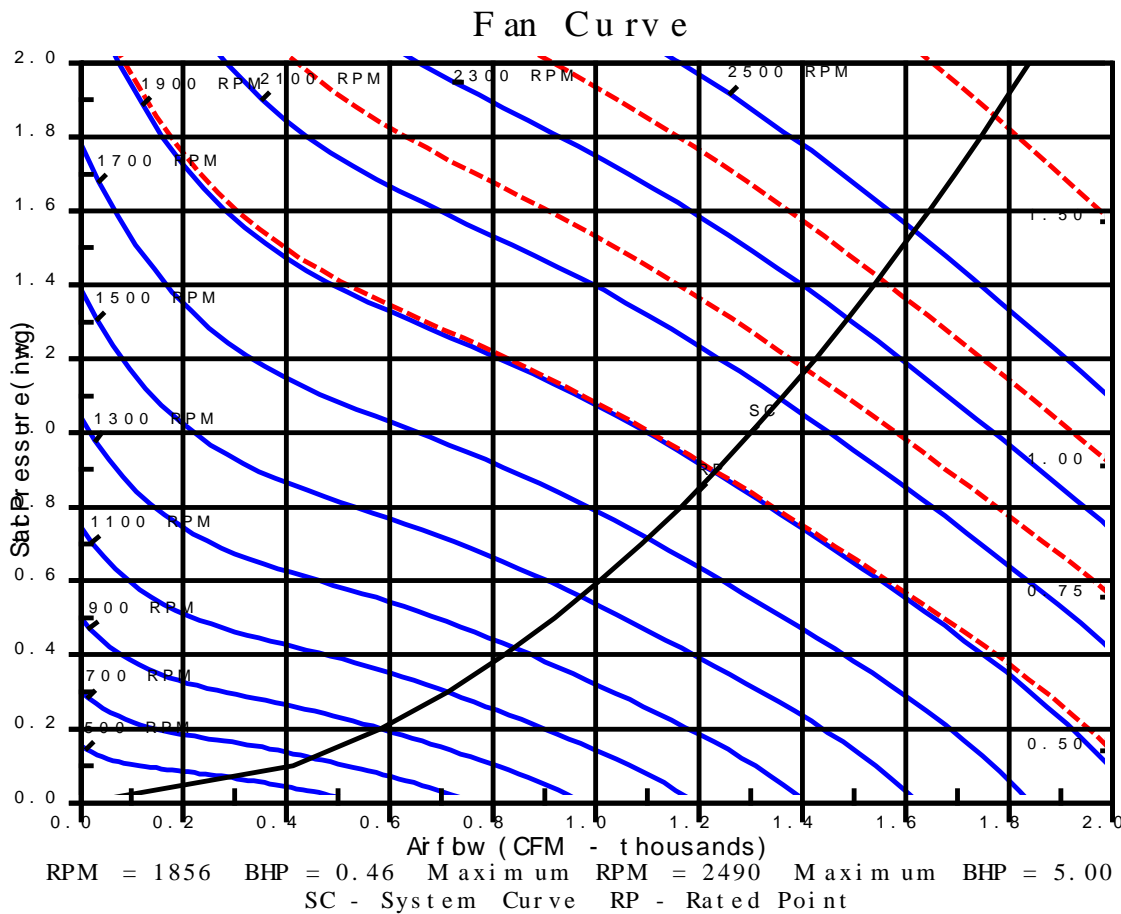
02/01/2022
 08:29PM

| | | | | | | | | | |
|---|------|------|------|------|------|------|------|------|----------|
| D | 27.0 | 36.2 | 39.5 | 40.4 | 40.0 | 36.8 | 31.4 | 25.8 | 46.1 LpA |
|---|------|------|------|------|------|------|------|------|----------|

Legend

- A Sound Power Levels at Unit's Acoustic Center, Lw
- B A-Weighted Sound Power Levels at Unit's Acoustic Center, LwA
- C Sound Pressure Levels at Specific Distance from Unit, Lp
- D A-Weighted Sound Pressure Levels at Specific Distance from Unit, LpA

Calculation methods used in this program are patterned after the ASHRAE Guide; other ASHRAE Publications and the AHRI Acoustical Standards. While a very significant effort has been made to insure the technical accuracy of this program, it is assumed that the user is knowledgeable in the art of system sound estimation and is aware of the tolerances involved in real world acoustical estimation. This program makes certain assumptions as to the dominant sound sources and sound paths which may not always be appropriate to the real system being estimated. Because of this, no assurances can be offered that this software will always generate an accurate sound prediction from user supplied input data. If in doubt about the estimation of expected sound levels in a space, an Acoustical Engineer or a person with sound prediction expertise should be consulted.



RTU 2

**Tag Cover Sheet
Unit Report
Certified Drawing
Performance Report**

Unit Report For RTU 2

Project: Nike - Glenarden, MD
Prepared By:

02/01/2022
08:29PM

Unit Parameters

Unit Model:..... **48HCDD08A2Q6-2W1J0**
 Unit Size:..... **08 (7.5 Tons)**
 Volts-Phase-Hertz: **460-3-60**
 Heating Type:..... **Gas**
 Duct Cfg:..... **Vertical Supply / Vertical Return**
 Low Heat
 Two stage cooling models

Dimensions (ft. in.) & Weight (lb.) ***

Unit Length:..... **7' 4.125"**
 Unit Width:..... **4' 11.5"**
 Unit Height: **4' 1.375"**
 *** Total Operating Weight: **1090** lb

*** Weights and Dimensions are approximate. Weight does not include unit packaging. Approximate dimensions are provided primarily for shipping purposes. For exact dimensions and weights, refer to appropriate product data catalog.

Lines and Filters

Gas Line Size:..... **1/2**
 Condensate Drain Line Size: **3/4**
 Return Air Filter Type: **Throwaway**
 Return Air Filter Quantity:..... **4**
 Return Air Filter Size:..... **20 x 20 x 2**

Selection includes construction throwaway filter into the base fan curve. This filter is not MERV Rated.

Unit Configuration

Medium Static Option - Belt Drive
 E-coat Al/Cu - E-coat Al/Cu - Louvered Hail Guards
 RTU Open Controller
 Enthalpy Ultra Low Leak Econo w/Baro Relief
 Unpowered Convenience Outlet
 Non-Fused Disconnect
 Standard Packaging
 2-Speed indoor fan motor controlled by VFD

Warranty Information

1-Year parts
 5-Year compressor parts
 10-Year heat exchanger - Aluminized

No optional warranties were selected.

NOTE: Please see Warranty Catalog 500-089 for explanation of policies and ordering methods.

Ordering Information

| Part Number | Description | Quantity |
|------------------------------------|--|----------|
| 48HCDD08A2Q6-2W1J0 | Rooftop Unit | 1 |
| | Base Unit | |
| | Medium Static Option - Belt Drive | |
| | E-coat Al/Cu - E-coat Al/Cu - Louvered Hail Guards | |
| | Unpowered Convenience Outlet | |
| | RTU Open controls Ultra Low Leak Enty. Econo 2, baro relief-Meets Calf. Title 24 FDD & Leak Rate | |
| | 2 Speed Fan Controller (VFD) and Non-Fused Disconnect | |
| | | |
| Field Installed Accessories | | |
| 33CENTSEN | Enthalpy Transmitter | 1 |

Certified Drawing for RTU 2

Project: Nike - Glenarden, MD
Prepared By:

02/01/2022
08:29PM

- NOTES:
- DIMENSIONS ARE IN INCHES. DIMENSIONS IN [] ARE IN MILLIMETERS.
 - CENTER OF GRAVITY
 - DIRECTION OF AIR FLOW

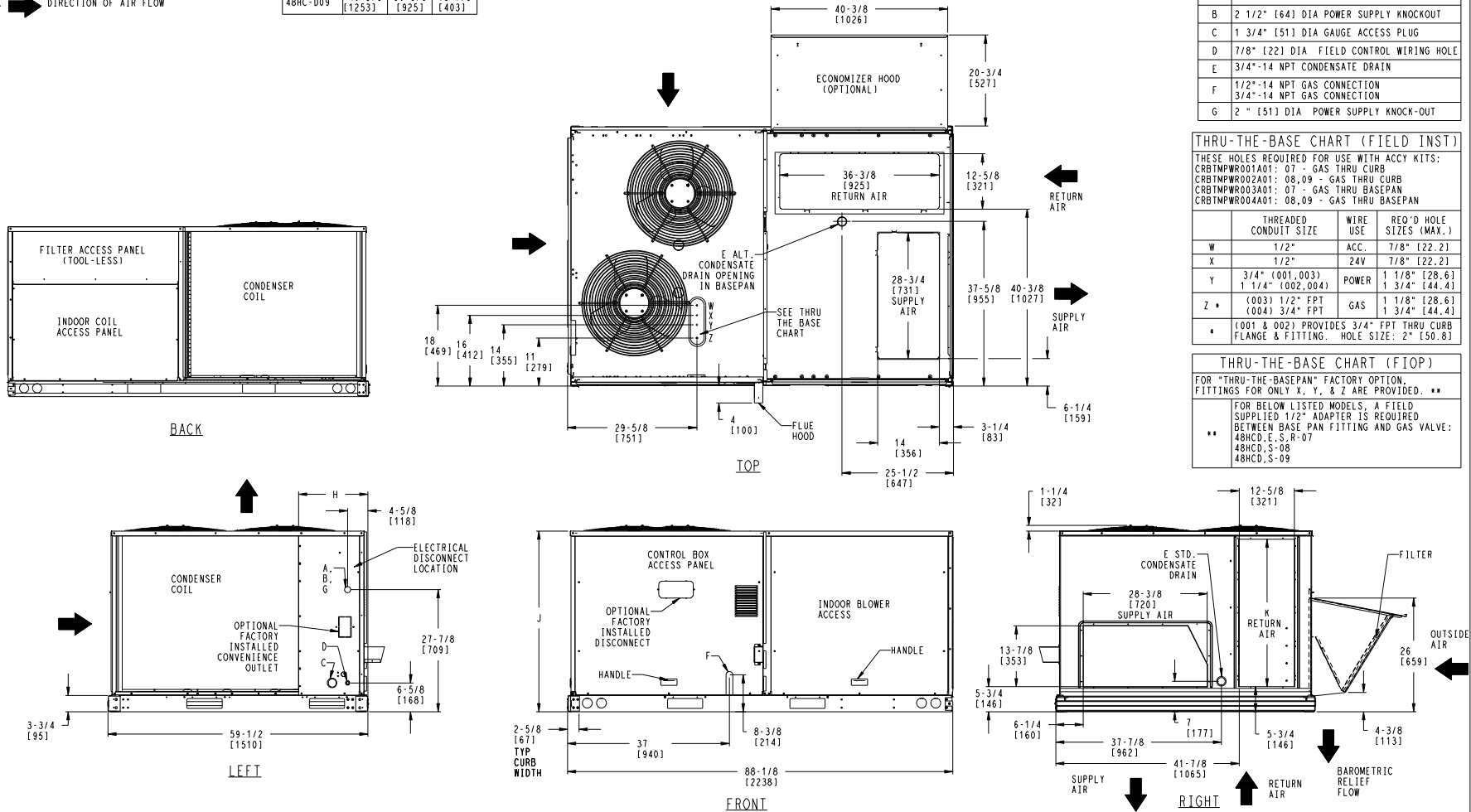
| UNIT | J | K | H |
|-------------|---------------|--------------|--------------|
| 48HC-A, D07 | 41 1/4 [1048] | 33 3/4 [857] | 15 7/8 [403] |
| 48HC-D08 | 49 3/8 [1253] | 36 3/8 [925] | 15 7/8 [403] |
| 48HC-D09 | 49 3/8 [1253] | 36 3/8 [925] | 15 7/8 [403] |

Carrier THIS DOCUMENT IS THE PROPERTY OF CARRIER CORPORATION AND IS DELIVERED UPON THE EXPRESS CONDITION THAT THE CONTENTS WILL NOT BE DISCLOSED OR USED WITHOUT CARRIER CORPORATION'S WRITTEN CONSENT. SUBMISSION OF THESE DRAWINGS OR DOCUMENTS DOES NOT CONSTITUTE PART PERFORMANCE OR ACCEPTANCE OF CONTRACT.

| CONNECTION SIZES | |
|------------------|---|
| A | 1 3/8" [35] DIA FIELD POWER SUPPLY HOLE |
| B | 2 1/2" [64] DIA POWER SUPPLY KNOCKOUT |
| C | 1 3/4" [51] DIA GAUGE ACCESS PLUG |
| D | 7/8" [22] DIA FIELD CONTROL WIRING HOLE |
| E | 3/4"-14 NPT CONDENSATE DRAIN |
| F | 1/2"-14 NPT GAS CONNECTION |
| G | 3/4"-14 NPT GAS CONNECTION |
| G | 2" [51] DIA POWER SUPPLY KNOCK-OUT |

| THRU-THE-BASE CHART (FIELD INST) | | | |
|--|--|----------|-------------------------|
| THESE HOLES REQUIRED FOR USE WITH ACCY KITS: CRBTMPW001A01: 07 - GAS THRU CURB CRBTMPW002A01: 08, 09 - GAS THRU CURB CRBTMPW003A01: 07 - GAS THRU BASEPAN CRBTMPW004A01: 08, 09 - GAS THRU BASEPAN | | | |
| | THREADED CONDUIT SIZE | WIRE USE | REQ'D HOLE SIZES (MAX.) |
| W | 1/2" | ACC. | 7/8" [22.2] |
| X | 1/2" | 24V | 7/8" [22.2] |
| Y | 3/4" (001, 003) | POWER | 1 1/8" [28.6] |
| | 1 1/4" (002, 004) | | 1 3/4" [44.4] |
| Z * | (003) 1/2" FPT | GAS | 1 1/8" [28.6] |
| | (004) 3/4" FPT | | 1 3/4" [44.4] |
| * | (001 & 002) PROVIDES 3/4" FPT THRU CURB FLANGE & FITTING. HOLE SIZE: 2" [50.8] | | |

| THRU-THE-BASE CHART (FIOP) | |
|--|--|
| FOR "THRU-THE-BASEPAN" FACTORY OPTION, FITTINGS FOR ONLY X, Y, & Z ARE PROVIDED. ** | |
| FOR BELOW LISTED MODELS, A FIELD SUPPLIED 1/2" ADAPTER IS REQUIRED BETWEEN BASE PAN FITTING AND GAS VALVE: 48HC-D, E, S, R-07 48HC-D, S-08 48HC-D, S-09 | |



| ITC CLASSIFICATION | SHEET | DATE | SUPERCEDES | 48HC 07 - 09 SINGLE ZONE ELECTRICAL COOLING WITH GAS HEAT | 48TM502708 | REV |
|--------------------|--------|----------|------------|---|------------|-----|
| U.S. ECCN: NSR | 1 OF 2 | 09/28/16 | 10/05/10 | | | B |

Certified Drawing for RTU 2

Project: Nike - Glenarden, MD
 Prepared By:

02/01/2022
 08:29PM

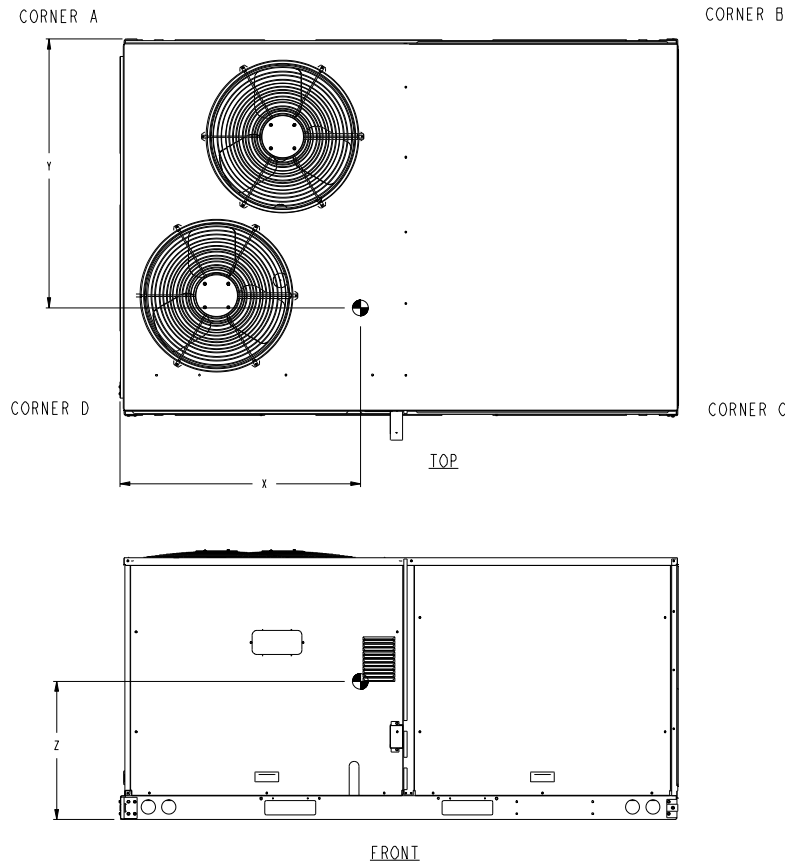
| UNIT | STD. UNIT WEIGHT * | | CORNER WEIGHT (A) | | CORNER WEIGHT (B) | | CORNER WEIGHT (C) | | CORNER WEIGHT (D) | | C.G. | | |
|------------|--------------------|-------|-------------------|------|-------------------|------|-------------------|-------|-------------------|-------|---------------|----------------|--------------|
| | LBS. | KG. | LBS. | KG. | LBS. | KG. | LBS. | KG. | LBS. | KG. | X | Y | Z |
| 48HC-A-D07 | 765 | 347 | 165.3 | 75 | 152.7 | 69.3 | 214.7 | 97.4 | 232.3 | 105.4 | 42 3/8 [1076] | 34 3/4 [882.6] | 19 7/8 [505] |
| 48HC-D08 | 925 | 419.5 | 204.1 | 92.6 | 190.9 | 86.6 | 256.1 | 116.2 | 273.9 | 124.2 | 42 5/8 [1082] | 34 1/8 [867] | 22 7/8 [581] |
| 48HC-D09 | 925 | 419.5 | 204.1 | 92.6 | 190.9 | 86.6 | 256.1 | 116.2 | 273.9 | 124.2 | 42 5/8 [1082] | 34 1/8 [867] | 22 7/8 [581] |



THIS DOCUMENT IS THE PROPERTY OF CARRIER CORPORATION AND IS DELIVERED UPON THE EXPRESS CONDITION THAT THE CONTENTS WILL NOT BE DISCLOSED OR USED WITHOUT CARRIER CORPORATION'S WRITTEN CONSENT.

SUBMISSION OF THESE DRAWINGS OR DOCUMENTS DOES NOT CONSTITUTE PART PERFORMANCE OR ACCEPTANCE OF CONTRACT.

* STANDARD UNIT WEIGHT IS WITH LOW GAS HEAT AND WITHOUT PACKAGING. FOR OTHER OPTIONS AND ACCESSORIES, REFER TO THE PRODUCT DATA CATALOG.



| | | | | | | |
|--------------------|--------|----------|------------|---|------------|-----|
| ITC CLASSIFICATION | SHEET | DATE | SUPERCEDES | 48HC 07 - 09 SINGLE ZONE ELECTRICAL COOLING WITH GAS HEAT | 48TM502708 | REV |
| U.S. ECCN:NSR | 2 OF 2 | 09/28/16 | 10/05/10 | | | B |

Certified Drawing for RTU 2

Project: Nike - Glenarden, MD
 Prepared By:

02/01/2022
 08:29PM

Service Clearance

C11247

| LOCATION | DIMENSION | CONDITION |
|----------|-----------------|--|
| A | 48-in (1219 mm) | • Unit disconnect is mounted on panel |
| | 36-in (914 mm) | • If dimension-B is 12-in (305 mm) |
| | 18-in (457 mm) | • No disconnect, convenience outlet option • Recommended service clearance (use electric screwdriver) |
| | 12-in (305 mm) | • Minimum clearance (use manual ratchet screwdriver) |
| B | 36-in (914 mm) | • Unit has economizer |
| | 12-in (305 mm) | • If dimension-A is 36-in (914 mm) |
| | Special | • Check for sources of flue products within 10-ft of unit fresh air intake hood |
| C | 36-in (914 mm) | • Side condensate drain is used |
| | 18-in (457 mm) | • Minimum clearance |
| D | 48-in (1219 mm) | • No flue discharge accessory installed, surface is combustible material |
| | 42-in (1067 mm) | • Surface behind servicer is grounded (e.g., metal, masonry wall, another unit) |
| | 36-in (914 mm) | • Surface behind servicer is electrically non-conductive (e.g., wood, fiberglass) |
| | Special | • Check for adjacent units or building fresh air intakes within 10-ft of this unit's flue outlet |

NOTE: Unit not designed to have overhead obstruction. Contact Application Engineering for guidance on any application planning overhead obstruction or vertical clearances.

Chassis 3-4a

Performance Summary For RTU 2

Project: Nike - Glenarden, MD
Prepared By:

02/01/2022
08:29PM

Part Number:48HCDD08A2Q6-2W1J0

ARI EER: 12.00
IEER: 13.8

Base Unit Dimensions

Unit Length: 88.1 in
Unit Width: 59.5 in
Unit Height: 49.4 in

Operating Weight

Base Unit Weight: 925 lb
Medium Static Option - Belt Drive: 15 lb
E-coat Al/Cu - E-coat Al/Cu - Louvered Hail Guards: 34 lb
RTU Open Controller: 2 lb
Enthalpy Ultra Low Leak Econo w/Baro Relief: 74 lb
Unpowered Convenience Outlet: 5 lb
2 Speed Fan Controller (VFD) and Non-Fused Disconnect: 35 lb

Total Operating Weight: 1090 lb

Unit

Unit Voltage-Phase-Hertz: 460-3-60
Air Discharge: Vertical
Fan Drive Type: Belt
Actual Airflow: 2500 CFM
Site Altitude: 282 ft

Cooling Performance

Condenser Entering Air DB: 95.0 F
Evaporator Entering Air DB: 77.3 F
Evaporator Entering Air WB: 65.7 F
Entering Air Enthalpy: 30.59 BTU/lb
Evaporator Leaving Air DB: 54.0 F
Evaporator Leaving Air WB: 54.0 F
Evaporator Leaving Air Enthalpy: 22.65 BTU/lb
Gross Cooling Capacity: 88.38 MBH
Gross Sensible Capacity: 62.15 MBH
Compressor Power Input: 6.22 kW
Coil Bypass Factor: 0.167

Heating Performance

Heating Airflow: 2500 CFM
Entering Air Temp: 53.7 F
Leaving Air Temp: 92.2 F
Gas Heating Input Capacity: 90.0 / 125.0 MBH
Gas Heating Output Capacity: 73.0 / 103.0 MBH
Temperature Rise: 38.5 F
Thermal Efficiency (%): 82.0

Supply Fan

External Static Pressure: 0.60 in wg
Options / Accessories Static Pressure
Economizer: 0.07 in wg
Total Application Static (ESP + Unit Opts/Acc.): 0.67 in wg
Fan RPM: 729
Fan Power: 0.89 BHP
NOTE: Selected IFM RPM Range: 690 - 936

NOTE: At the selected supply CFM value, a saturated suction temperature of less than 32 F (0 C) is possible if running less than 62 F (16.7 C) ambient. This implies a slight risk of freezing the evaporator coil during operation. To avoid this slight risk, it is suggested to re-program the VFD 'low fan speed' to at least

Performance Summary For RTU 2

Project: Nike - Glenarden, MD
Prepared By:

02/01/2022
08:29PM

1690 cfm using the accessory VFD display kit.....

Selection includes construction throwaway filter into the base fan curve. This filter is not MERV Rated.

Electrical Data

| | |
|--|------------------|
| Voltage Range: | 414 - 506 |
| Compressor #1 RLA:..... | 6.1 |
| Compressor #1 LRA:..... | 41 |
| Compressor #2 RLA:..... | 6.1 |
| Compressor #2 LRA:..... | 41 |
| Indoor Fan Motor Type:..... | MED |
| Indoor Fan Motor FLA: | 3.4 |
| Combustion Fan Motor FLA (ea):..... | 0.25 |
| Power Supply MCA:..... | 19 |
| Power Supply MOCP (Fuse or HACR):..... | 25 |
| Disconnect Size FLA:..... | 20 |
| Disconnect Size LRA: | 100 |
| Electrical Convenience Outlet: | None |
| Outdoor Fan [Qty / FLA (ea)]: | 2 / 0.8 |

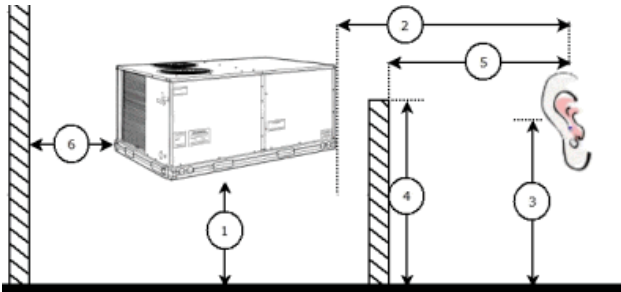
Control Panel SCCR: 5kA RMS at Rated Symmetrical Voltage

Acoustics

Sound Power Levels, db re 10E-12 Watts

| | Discharge | Inlet | Outdoor |
|------------|------------------|--------------|----------------|
| 63 Hz | 96.3 | 93.8 | 90.6 |
| 125 Hz | 89.1 | 82.9 | 84.3 |
| 250 Hz | 72.9 | 67.0 | 80.2 |
| 500 Hz | 66.2 | 62.7 | 79.3 |
| 1000 Hz | 61.3 | 60.1 | 77.1 |
| 2000 Hz | 59.9 | 54.9 | 72.2 |
| 4000 Hz | 62.1 | 53.7 | 67.4 |
| 8000 Hz | 62.4 | 53.3 | 63.7 |
| A-Weighted | 76.1 | 71.5 | 82.0 |

Advanced Acoustics



Advanced Acoustics Parameters

| | | |
|--|-------------|----|
| 1. Unit height above ground: | 30.0 | ft |
| 2. Horizontal distance from unit to receiver: | 50.0 | ft |
| 3. Receiver height above ground: | 5.7 | ft |
| 4. Height of obstruction: | 0.0 | ft |
| 5. Horizontal distance from obstruction to receiver: | 0.0 | ft |
| 6. Horizontal distance from unit to obstruction: | 0.0 | ft |

Performance Summary For RTU 2

Project: Nike - Glenarden, MD
 Prepared By:

02/01/2022
 08:29PM

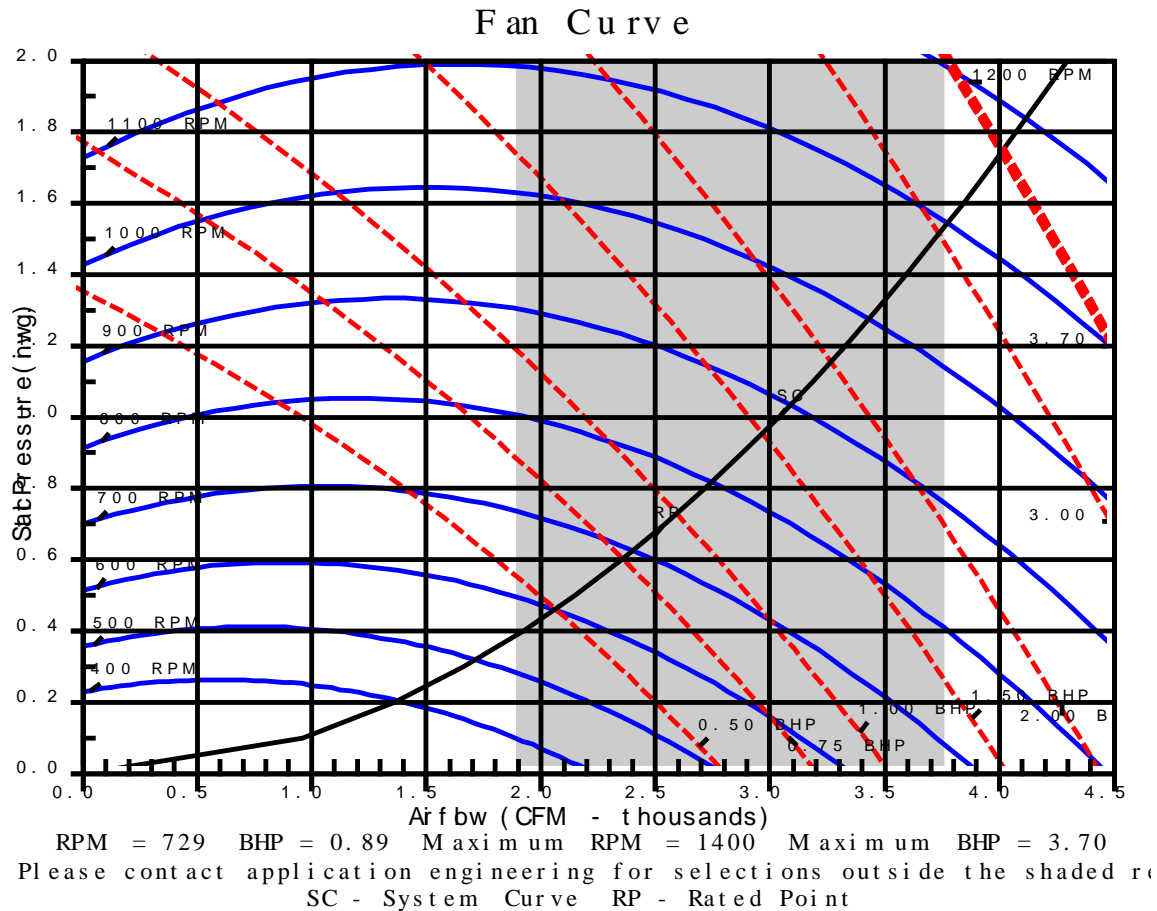
Detailed Acoustics Information

| Octave Band Center Freq. Hz | 63 | 125 | 250 | 500 | 1k | 2k | 4k | 8k | Overall |
|-----------------------------|------|------|------|------|------|------|------|------|----------|
| A | 90.6 | 84.3 | 80.2 | 79.3 | 77.1 | 72.2 | 67.4 | 63.7 | 92.3 Lw |
| B | 64.4 | 68.2 | 71.6 | 76.1 | 77.1 | 73.4 | 68.4 | 62.6 | 81.7 LwA |
| C | 58.2 | 51.9 | 47.8 | 46.9 | 44.7 | 39.8 | 35.0 | 31.3 | 59.9 Lp |
| D | 32.0 | 35.8 | 39.2 | 43.7 | 44.7 | 41.0 | 36.0 | 30.2 | 49.3 LpA |

Legend

- A Sound Power Levels at Unit's Acoustic Center, Lw
- B A-Weighted Sound Power Levels at Unit's Acoustic Center, LwA
- C Sound Pressure Levels at Specific Distance from Unit, Lp
- D A-Weighted Sound Pressure Levels at Specific Distance from Unit, LpA

Calculation methods used in this program are patterned after the ASHRAE Guide; other ASHRAE Publications and the AHRI Acoustical Standards. While a very significant effort has been made to insure the technical accuracy of this program, it is assumed that the user is knowledgeable in the art of system sound estimation and is aware of the tolerances involved in real world acoustical estimation. This program makes certain assumptions as to the dominant sound sources and sound paths which may not always be appropriate to the real system being estimated. Because of this, no assurances can be offered that this software will always generate an accurate sound prediction from user supplied input data. If in doubt about the estimation of expected sound levels in a space, an Acoustical Engineer or a person with sound prediction expertise should be consulted.



RTU 3-5

**Tag Cover Sheet
Unit Report
Certified Drawing
Performance Report**

Unit Report For RTU 3-5

Project: Nike - Glenarden, MD
 Prepared By:

02/01/2022
 08:29PM

Unit Parameters

Unit Model:.....**48HCEE08A2Q6-2W1J0**
 Unit Size:.....**08 (7.5 Tons)**
 Volts-Phase-Hertz:.....**460-3-60**
 Heating Type:.....**Gas**
 Duct Cfg:.....**Vertical Supply / Vertical Return**
 Medium Heat
 Two stage cooling models with Humidi-MiZer

Dimensions (ft. in.) & Weight (lb.) ***

Unit Length:.....**7' 4.125"**
 Unit Width:.....**4' 11.5"**
 Unit Height:.....**4' 1.375"**
 *** Total Operating Weight:.....**1185** lb

*** Weights and Dimensions are approximate. Weight does not include unit packaging. Approximate dimensions are provided primarily for shipping purposes. For exact dimensions and weights, refer to appropriate product data catalog.

Lines and Filters

Gas Line Size:..... **3/4**
 Condensate Drain Line Size:..... **3/4**
 Return Air Filter Type:..... **Throwaway**
 Return Air Filter Quantity:..... **4**
 Return Air Filter Size:.....**20 x 20 x 2**

Selection includes construction throwaway filter into the base fan curve. This filter is not MERV Rated.

Unit Configuration

Medium Static Option - Belt Drive
 E-coat Al/Cu - E-coat Al/Cu - Louvered Hail Guards
 RTU Open Controller
 Enthalpy Ultra Low Leak Econo w/Baro Relief
 Unpowered Convenience Outlet
 Non-Fused Disconnect
 Standard Packaging
 2-Speed indoor fan motor controlled by VFD
 Humidi-MiZer™ Adaptive Dehumidification System

Warranty Information

1-Year parts
 5-Year compressor parts
 10-Year heat exchanger - Aluminized

No optional warranties were selected.

NOTE: Please see Warranty Catalog 500-089 for explanation of policies and ordering methods.

Ordering Information

| Part Number | Description | Quantity |
|------------------------------------|--|----------|
| 48HCEE08A2Q6-2W1J0 | Rooftop Unit | 1 |
| | Base Unit | |
| | Medium Static Option - Belt Drive | |
| | E-coat Al/Cu - E-coat Al/Cu - Louvered Hail Guards | |
| | Unpowered Convenience Outlet | |
| | Humidi-MiZer™ Adaptive Dehumidification System | |
| | RTU Open controls Ultra Low Leak Enty. Econo 2, baro relief-Meets Calf. Title 24 FDD & Leak Rate | |
| | 2 Speed Fan Controller (VFD) and Non-Fused Disconnect | |
| | | |
| Field Installed Accessories | | |
| 33CENTSEN | Enthalpy Transmitter | 1 |

Certified Drawing for RTU 3-5

Project: Nike - Glenarden, MD
Prepared By:

02/01/2022
08:29PM

- NOTES:
- DIMENSIONS ARE IN INCHES. DIMENSIONS IN [] ARE IN MILLIMETERS.
 - CENTER OF GRAVITY
 - DIRECTION OF AIR FLOW

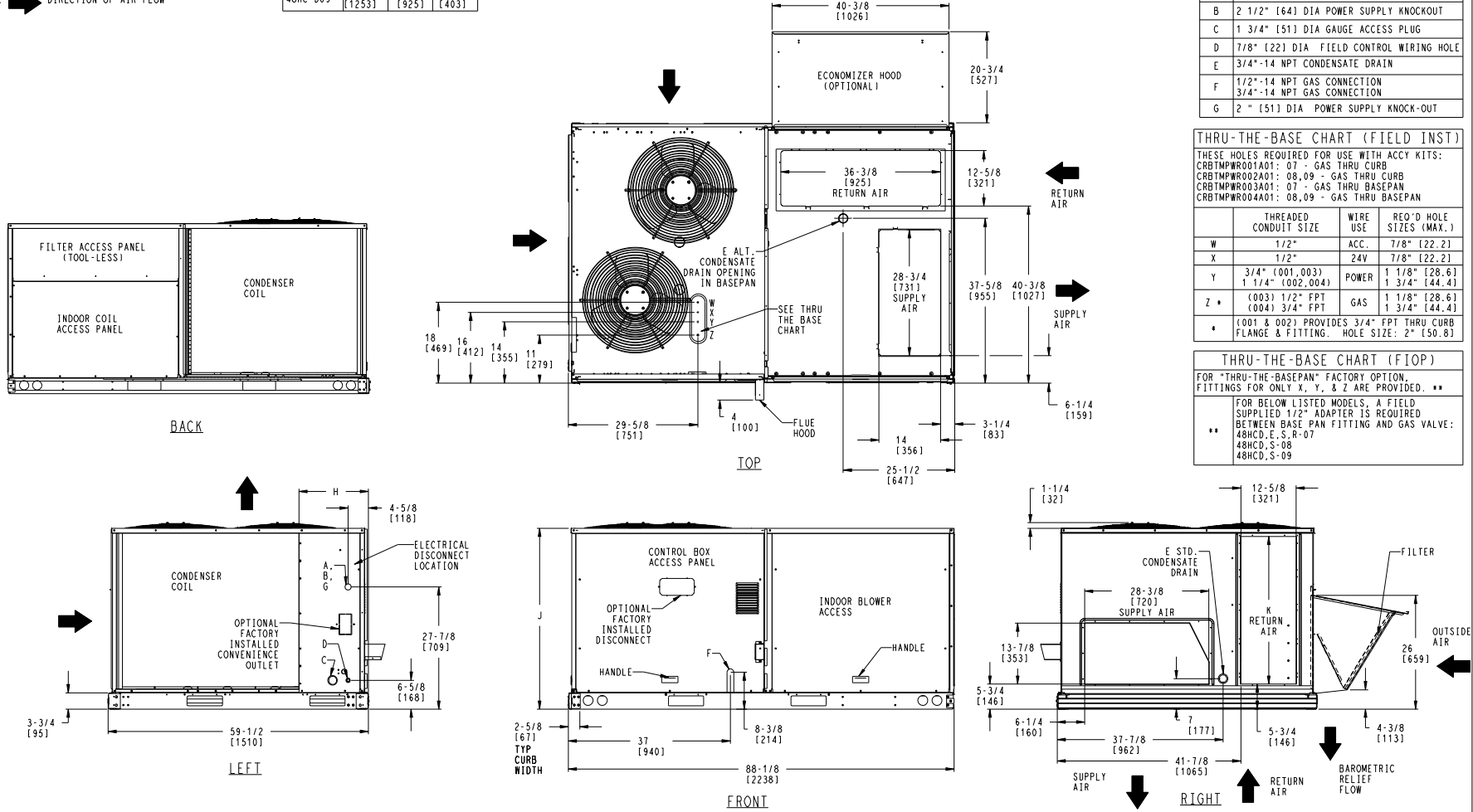
| UNIT | J | K | H |
|-------------|---------------|--------------|--------------|
| 48HC-A, D07 | 41 1/4 [1048] | 33 3/4 [857] | 15 7/8 [403] |
| 48HC-D08 | 49 3/8 [1253] | 36 3/8 [925] | 15 7/8 [403] |
| 48HC-D09 | 49 3/8 [1253] | 36 3/8 [925] | 15 7/8 [403] |

THIS DOCUMENT IS THE PROPERTY OF CARRIER CORPORATION AND IS DELIVERED UPON THE EXPRESS CONDITION THAT THE CONTENTS WILL NOT BE DISCLOSED OR USED WITHOUT CARRIER CORPORATION'S WRITTEN CONSENT. SUBMISSION OF THESE DRAWINGS OR DOCUMENTS DOES NOT CONSTITUTE PART PERFORMANCE OR ACCEPTANCE OF CONTRACT.

| CONNECTION SIZES | |
|------------------|---|
| A | 1 3/8" [35] DIA FIELD POWER SUPPLY HOLE |
| B | 2 1/2" [64] DIA POWER SUPPLY KNOCKOUT |
| C | 1 3/4" [51] DIA GAUGE ACCESS PLUG |
| D | 7/8" [22] DIA FIELD CONTROL WIRING HOLE |
| E | 3/4"-14 NPT CONDENSATE DRAIN |
| F | 1/2"-14 NPT GAS CONNECTION |
| G | 3/4"-14 NPT GAS CONNECTION |
| G | 2" [51] DIA POWER SUPPLY KNOCK-OUT |

| THRU-THE-BASE CHART (FIELD INST) | | | |
|--|--|----------|-------------------------|
| THESE HOLES REQUIRED FOR USE WITH ACCY KITS: CRBTMPR001A01: 07 - GAS THRU CURB CRBTMPR002A01: 08, 09 - GAS THRU CURB CRBTMPR003A01: 07 - GAS THRU BASEPAN CRBTMPR004A01: 08, 09 - GAS THRU BASEPAN | | | |
| | THREADED CONDUIT SIZE | WIRE USE | REQ'D HOLE SIZES (MAX.) |
| W | 1/2" | ACC. | 7/8" [22.2] |
| X | 1/2" | 24V | 7/8" [22.2] |
| Y | 3/4" (001, 003) | POWER | 1 1/8" [28.6] |
| | 1 1/4" (002, 004) | | 1 3/4" [44.4] |
| Z * | (003) 1/2" FPT | GAS | 1 1/8" [28.6] |
| | (004) 3/4" FPT | | 1 3/4" [44.4] |
| * | (001 & 002) PROVIDES 3/4" FPT THRU CURB FLANGE & FITTING. HOLE SIZE: 2" [50.8] | | |

| THRU-THE-BASE CHART (FIOP) | |
|--|--|
| FOR "THRU-THE-BASEPAN" FACTORY OPTION, FITTINGS FOR ONLY X, Y, & Z ARE PROVIDED. ** | |
| FOR BELOW LISTED MODELS, A FIELD SUPPLIED 1/2" ADAPTER IS REQUIRED BETWEEN BASE PAN FITTING AND GAS VALVE: 48HC-D, E, S, R-07 48HC-D, S-08 48HC-D, S-09 | |



| | | | | | | |
|--------------------|--------|----------|------------|---|------------|-----|
| ITC CLASSIFICATION | SHEET | DATE | SUPERCEDES | 48HC 07 - 09 SINGLE ZONE ELECTRICAL COOLING WITH GAS HEAT | 48TM502708 | REV |
| U.S. ECCN: NSR | 1 OF 2 | 09/28/16 | 10/05/10 | | | B |

Certified Drawing for RTU 3-5

Project: Nike - Glenarden, MD
Prepared By:

02/01/2022
08:29PM

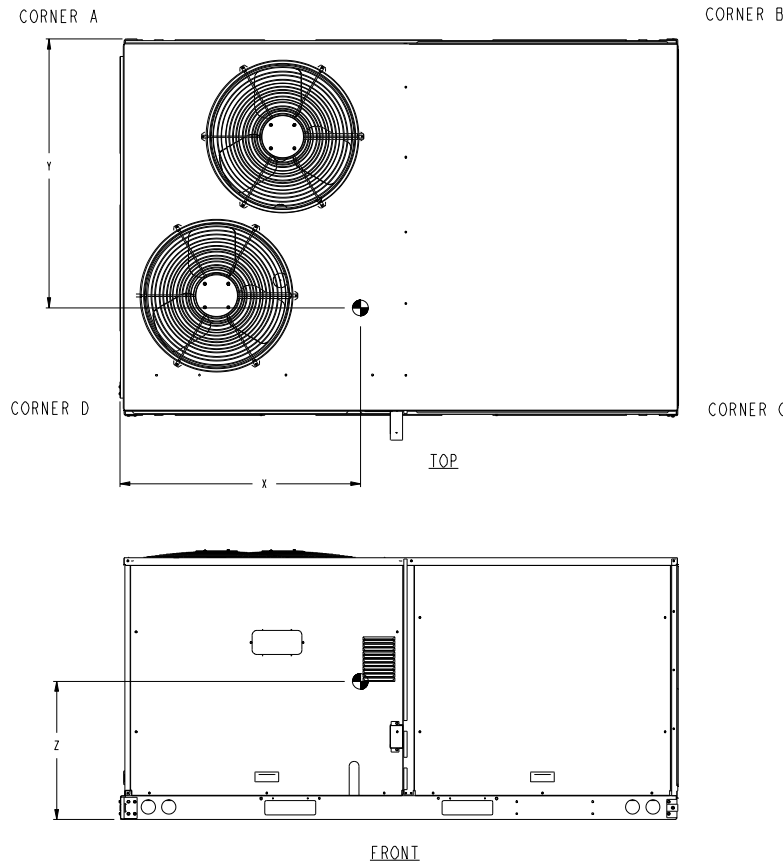
| UNIT | STD. UNIT WEIGHT * | | CORNER WEIGHT (A) | | CORNER WEIGHT (B) | | CORNER WEIGHT (C) | | CORNER WEIGHT (D) | | C.G. | | |
|------------|--------------------|-------|-------------------|------|-------------------|------|-------------------|-------|-------------------|-------|---------------|----------------|--------------|
| | LBS. | KG. | LBS. | KG. | LBS. | KG. | LBS. | KG. | LBS. | KG. | X | Y | Z |
| 48HC-A-D07 | 765 | 347 | 165.3 | 75 | 152.7 | 69.3 | 214.7 | 97.4 | 232.3 | 105.4 | 42 3/8 [1076] | 34 3/4 [882.6] | 19 7/8 [505] |
| 48HC-D08 | 925 | 419.5 | 204.1 | 92.6 | 190.9 | 86.6 | 256.1 | 116.2 | 273.9 | 124.2 | 42 5/8 [1082] | 34 1/8 [867] | 22 7/8 [581] |
| 48HC-D09 | 925 | 419.5 | 204.1 | 92.6 | 190.9 | 86.6 | 256.1 | 116.2 | 273.9 | 124.2 | 42 5/8 [1082] | 34 1/8 [867] | 22 7/8 [581] |



THIS DOCUMENT IS THE PROPERTY OF CARRIER CORPORATION AND IS DELIVERED UPON THE EXPRESS CONDITION THAT THE CONTENTS WILL NOT BE DISCLOSED OR USED WITHOUT CARRIER CORPORATION'S WRITTEN CONSENT.

SUBMISSION OF THESE DRAWINGS OR DOCUMENTS DOES NOT CONSTITUTE PART PERFORMANCE OR ACCEPTANCE OF CONTRACT.

* STANDARD UNIT WEIGHT IS WITH LOW GAS HEAT AND WITHOUT PACKAGING. FOR OTHER OPTIONS AND ACCESSORIES, REFER TO THE PRODUCT DATA CATALOG.



| | | | | | | |
|--------------------|--------|----------|------------|---|------------|-----|
| ITC CLASSIFICATION | SHEET | DATE | SUPERCEDES | 48HC 07 - 09 SINGLE ZONE ELECTRICAL COOLING WITH GAS HEAT | 48TM502708 | REV |
| U.S. ECCN:NSR | 2 OF 2 | 09/28/16 | 10/05/10 | | | B |

Performance Summary For RTU 3-5

Project: Nike - Glenarden, MD
Prepared By:

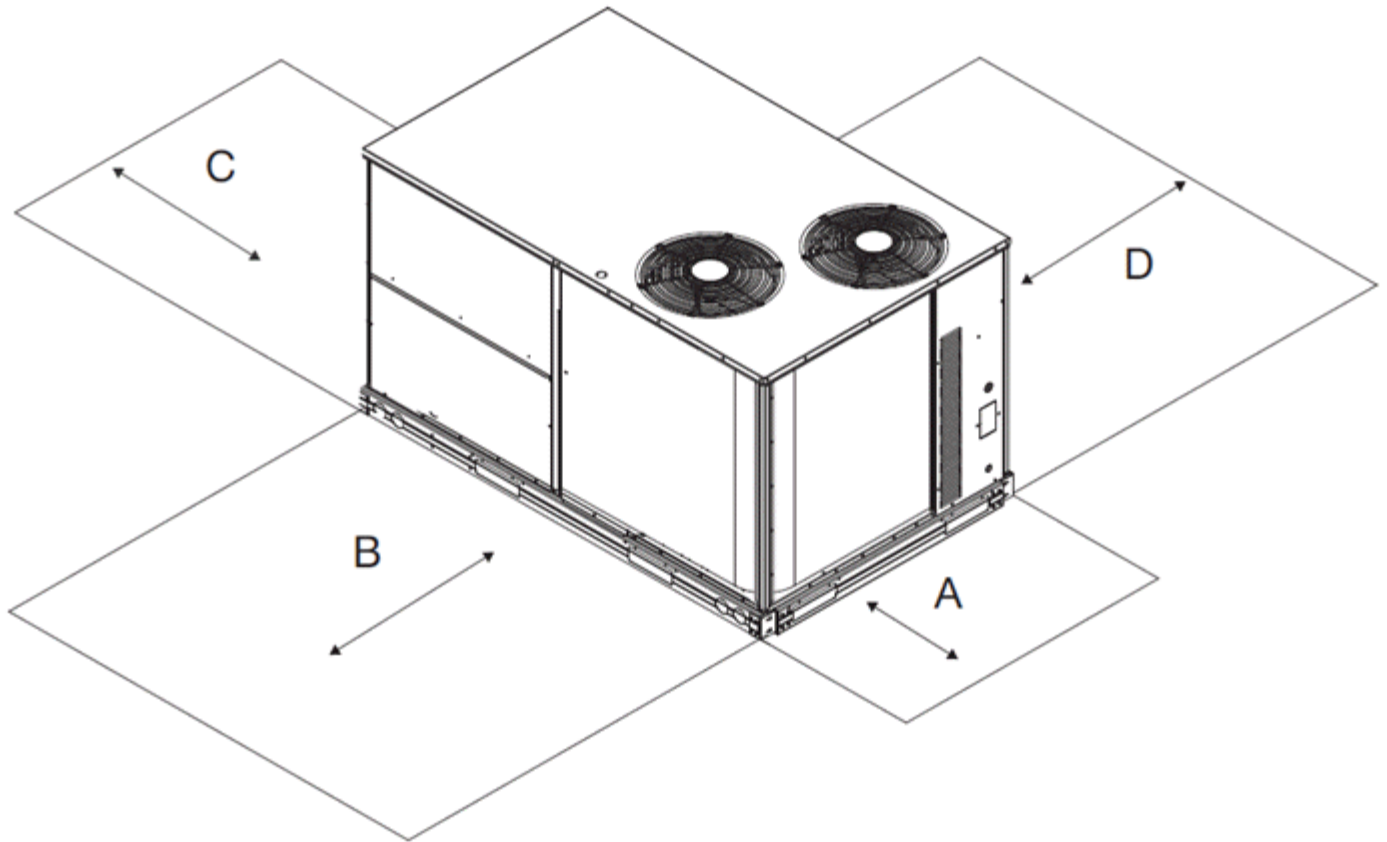
02/01/2022
08:29PM

Performance Summary For RTU 3-5

Project: Nike - Glenarden, MD
Prepared By:

02/01/2022
08:29PM

Service Clearance



C11247

| LOCATION | DIMENSION | CONDITION |
|----------|-----------------|--|
| A | 48-in (1219 mm) | • Unit disconnect is mounted on panel |
| | 36-in (914 mm) | • If dimension-B is 12-in (305 mm) |
| | 18-in (457 mm) | • No disconnect, convenience outlet option • Recommended service clearance (use electric screwdriver) |
| | 12-in (305 mm) | • Minimum clearance (use manual ratchet screwdriver) |
| B | 36-in (914 mm) | • Unit has economizer |
| | 12-in (305 mm) | • If dimension-A is 36-in (914 mm) |
| | Special | • Check for sources of flue products within 10-ft of unit fresh air intake hood |
| C | 36-in (914 mm) | • Side condensate drain is used |
| | 18-in (457 mm) | • Minimum clearance |
| D | 48-in (1219 mm) | • No flue discharge accessory installed, surface is combustible material |
| | 42-in (1067 mm) | • Surface behind servicer is grounded (e.g., metal, masonry wall, another unit) |
| | 36-in (914 mm) | • Surface behind servicer is electrically non-conductive (e.g., wood, fiberglass) |
| | Special | • Check for adjacent units or building fresh air intakes within 10-ft of this unit's flue outlet |

NOTE: Unit not designed to have overhead obstruction. Contact Application Engineering for guidance on any application planning overhead obstruction or vertical clearances.

Performance Summary For RTU 3-5

Project: Nike - Glenarden, MD
Prepared By:

02/01/2022
08:29PM

Part Number:48HCEE08A2Q6-2W1J0

ARI EER: 12.00
IEER (Max Cooling at Normal Cooling Design Mode): 13.8

Base Unit Dimensions

Unit Length: 88.1 in
Unit Width: 59.5 in
Unit Height: 49.4 in

Operating Weight

Base Unit Weight: 925 lb
Medium Heat: 15 lb
Two stage cooling models with Humidi-MiZer: 80 lb
Medium Static Option - Belt Drive: 15 lb
E-coat Al/Cu - E-coat Al/Cu - Louvered Hail Guards: 34 lb
RTU Open Controller: 2 lb
Enthalpy Ultra Low Leak Econo w/Baro Relief: 74 lb
Unpowered Convenience Outlet: 5 lb
2 Speed Fan Controller (VFD) and Non-Fused Disconnect: 35 lb

Total Operating Weight: 1185 lb

Unit

Unit Voltage-Phase-Hertz: 460-3-60
Air Discharge: Vertical
Fan Drive Type: Belt
Actual Airflow: 2500 CFM
Site Altitude: 282 ft

Cooling Performance

Condenser Entering Air DB: 95.0 F
Evaporator Entering Air DB: 76.8 F
Evaporator Entering Air WB: 69.5 F
Entering Air Enthalpy: 33.70 BTU/lb
Evaporator Leaving Air DB: 59.2 F
Evaporator Leaving Air WB: 58.3 F
Evaporator Leaving Air Enthalpy: 25.32 BTU/lb
Gross Cooling Capacity: 93.24 MBH
Gross Sensible Capacity: 47.06 MBH
Compressor Power Input: 5.85 kW
Coil Bypass Factor: 0.037

Heating Performance

Heating Airflow: 2500 CFM
Entering Air Temp: 47.7 F
Leaving Air Temp: 103.1 F
Gas Heating Input Capacity: 120.0 / 180.0 MBH
Gas Heating Output Capacity: 98.0 / 148.0 MBH
Temperature Rise: 55.4 F
Thermal Efficiency (%): 82.0

Supply Fan

External Static Pressure: 0.80 in wg
Options / Accessories Static Pressure
Humidi-MiZer Dehumidification System: 0.14 in wg
Economizer: 0.07 in wg
Total Application Static (ESP + Unit Opts/Acc.): 1.01 in wg
Fan RPM: 844
Fan Power: 1.20 BHP

NOTE: Selected IFM RPM Range: 690 - 936

NOTE: At the selected supply CFM value, a saturated suction temperature of less than 32 F (0 C) is possible if

Performance Summary For RTU 3-5

Project: Nike - Glenarden, MD
Prepared By:

02/01/2022
08:29PM

running less than 62 F (16.7 C) ambient. This implies a slight risk of freezing the evaporator coil during operation. To avoid this slight risk, it is suggested to re-program the VFD 'low fan speed' to at least 1690 cfm using the accessory VFD display kit.

Selection includes construction throwaway filter into the base fan curve. This filter is not MERV Rated.

Electrical Data

| | |
|-----------------------------------|-----------|
| Voltage Range: | 414 - 506 |
| Compressor #1 RLA: | 6.1 |
| Compressor #1 LRA: | 41 |
| Compressor #2 RLA: | 6.1 |
| Compressor #2 LRA: | 41 |
| Indoor Fan Motor Type: | MED |
| Indoor Fan Motor FLA: | 3.4 |
| Combustion Fan Motor FLA (ea): | 0.25 |
| Power Supply MCA: | 19 |
| Power Supply MOCP (Fuse or HACR): | 25 |
| Disconnect Size FLA: | 20 |
| Disconnect Size LRA: | 100 |
| Electrical Convenience Outlet: | None |
| Outdoor Fan [Qty / FLA (ea)]: | 2 / 0.8 |

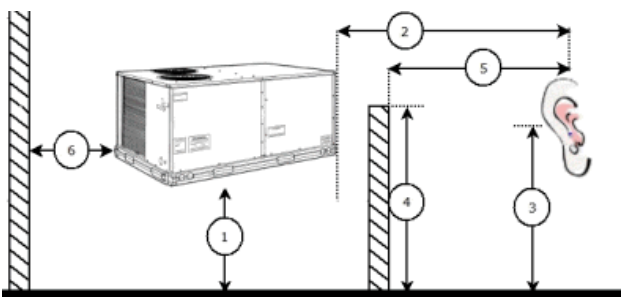
Control Panel SCCR: 5kA RMS at Rated Symmetrical Voltage

Acoustics

Sound Power Levels, db re 10E-12 Watts

| | Discharge | Inlet | Outdoor |
|------------|-----------|-------|---------|
| 63 Hz | 97.2 | 94.7 | 90.6 |
| 125 Hz | 89.9 | 84.4 | 84.3 |
| 250 Hz | 74.5 | 70.2 | 80.2 |
| 500 Hz | 67.4 | 64.0 | 79.3 |
| 1000 Hz | 63.3 | 61.4 | 77.1 |
| 2000 Hz | 62.3 | 56.3 | 72.2 |
| 4000 Hz | 64.1 | 55.5 | 67.4 |
| 8000 Hz | 65.7 | 55.1 | 63.7 |
| A-Weighted | 77.3 | 72.8 | 82.0 |

Advanced Acoustics



Advanced Acoustics Parameters

| | | |
|--|------|----|
| 1. Unit height above ground: | 30.0 | ft |
| 2. Horizontal distance from unit to receiver: | 50.0 | ft |
| 3. Receiver height above ground: | 5.7 | ft |
| 4. Height of obstruction: | 0.0 | ft |
| 5. Horizontal distance from obstruction to receiver: | 0.0 | ft |

Performance Summary For RTU 3-5

Project: Nike - Glenarden, MD
 Prepared By:

02/01/2022
 08:29PM

6. Horizontal distance from unit to obstruction:0.0 ft

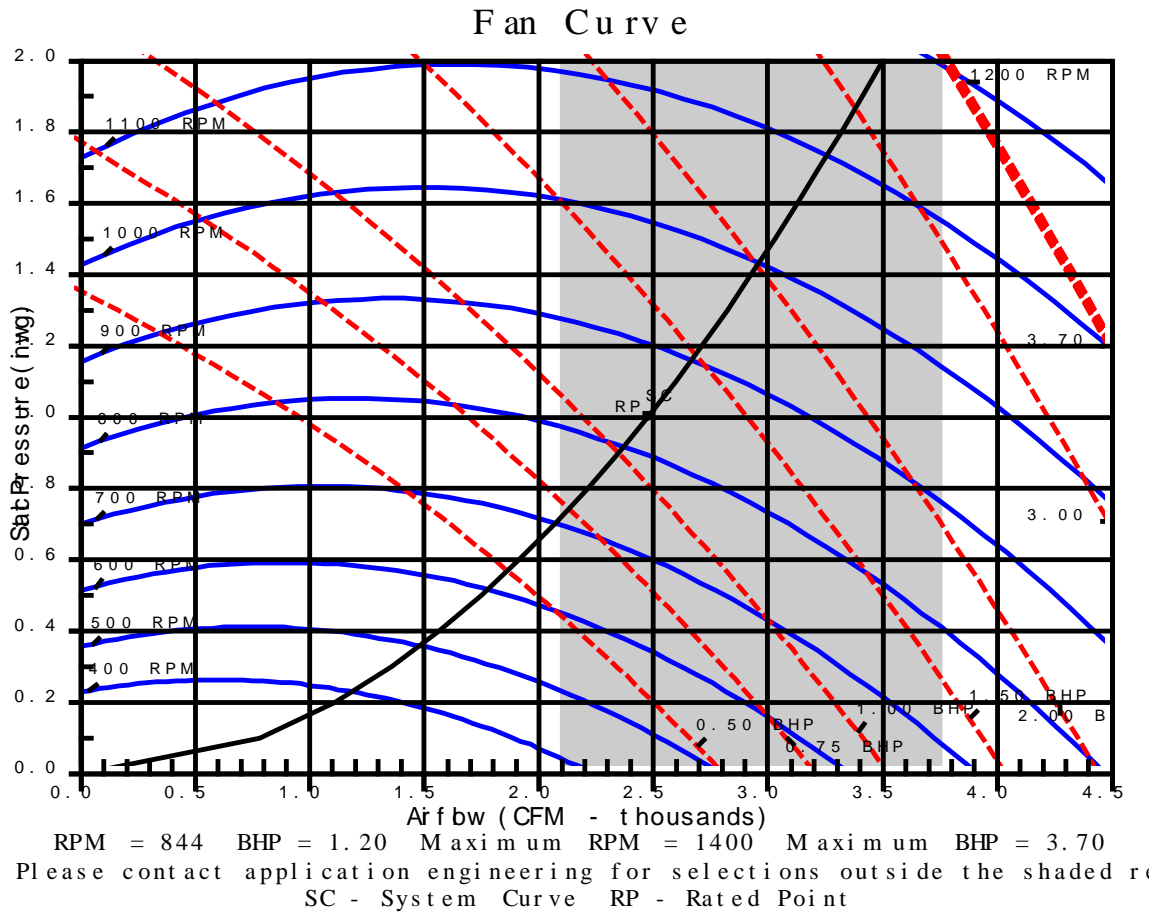
Detailed Acoustics Information

| Octave Band Center Freq. Hz | 63 | 125 | 250 | 500 | 1k | 2k | 4k | 8k | Overall |
|-----------------------------|------|------|------|------|------|------|------|------|----------|
| A | 90.6 | 84.3 | 80.2 | 79.3 | 77.1 | 72.2 | 67.4 | 63.7 | 92.3 Lw |
| B | 64.4 | 68.2 | 71.6 | 76.1 | 77.1 | 73.4 | 68.4 | 62.6 | 81.7 LwA |
| C | 58.2 | 51.9 | 47.8 | 46.9 | 44.7 | 39.8 | 35.0 | 31.3 | 59.9 Lp |
| D | 32.0 | 35.8 | 39.2 | 43.7 | 44.7 | 41.0 | 36.0 | 30.2 | 49.3 LpA |

Legend

- A Sound Power Levels at Unit's Acoustic Center, Lw
- B A-Weighted Sound Power Levels at Unit's Acoustic Center, LwA
- C Sound Pressure Levels at Specific Distance from Unit, Lp
- D A-Weighted Sound Pressure Levels at Specific Distance from Unit, LpA

Calculation methods used in this program are patterned after the ASHRAE Guide; other ASHRAE Publications and the AHRI Acoustical Standards. While a very significant effort has been made to insure the technical accuracy of this program, it is assumed that the user is knowledgeable in the art of system sound estimation and is aware of the tolerances involved in real world acoustical estimation. This program makes certain assumptions as to the dominant sound sources and sound paths which may not always be appropriate to the real system being estimated. Because of this, no assurances can be offered that this software will always generate an accurate sound prediction from user supplied input data. If in doubt about the estimation of expected sound levels in a space, an Acoustical Engineer or a person with sound prediction expertise should be consulted.



RTU 6

**Tag Cover Sheet
Unit Report
Certified Drawing
Performance Report**

Unit Report For RTU 6

Project: Nike - Glenarden, MD
Prepared By:

02/01/2022
08:29PM

Unit Parameters

Unit Model:..... **48GCDM04A2Q6-3W1C0**
 Unit Size:..... **04 (3 Tons)**
 Volts-Phase-Hertz: **460-3-60**
 Heating Type:..... **Gas**
 Duct Cfg:..... **Vertical Supply / Vertical Return**
 Low Heat
 Two Stage Cooling Models

Dimensions (ft. in.) & Weight (lb.) ***

Unit Length:..... **6' 2.375"**
 Unit Width:..... **3' 10.625"**
 Unit Height: **2' 9.375"**
 *** Total Operating Weight: **572 lb**

*** Weights and Dimensions are approximate. Weight does not include unit packaging. Approximate dimensions are provided primarily for shipping purposes. For exact dimensions and weights, refer to appropriate product data catalog.

Lines and Filters

Gas Line Size:..... **1/2**
 Condensate Drain Line Size: **3/4**
 Return Air Filter Type: **Throwaway**
 Return Air Filter Quantity:..... **2**
 Return Air Filter Size:..... **16 x 25 x 2**

Selection includes construction throwaway filter into the base fan curve. This filter is not MERV Rated.

Unit Configuration

Direct Drive - EcoBlue - Medium Static
 E-coat Al/Cu - E-coat Al/Cu - Louvered Hail Guards
 SystemVu Controls
 Enthalpy Ultra Low Leak Econo w/Baro Relief
 Unpowered Convenience Outlet
 Non-Fused Disconnect
 Standard Packaging

Warranty Information

1-Year parts(std.)
 5-Year compressor parts(std.)
 10-Year heat exchanger - Aluminized(std.)

No optional warranties were selected.

NOTE: Please see Warranty Catalog 500-089 for explanation of policies and ordering methods.

Ordering Information

| Part Number | Description | Quantity |
|------------------------------------|---|----------|
| 48GCDM04A2Q6-3W1C0 | Rooftop Unit | 1 |
| | Base Unit | |
| | Direct Drive - EcoBlue - Medium Static | |
| | E-coat Al/Cu - E-coat Al/Cu - Louvered Hail Guards | |
| | Unpowered Convenience Outlet | |
| | Non-Fused Disconnect | |
| | SystemVu controller, Ultra LOW LEAK EconoMiSer2 enthalpy economizer with barometric relief. SystemV | |
| | | |
| | | |
| Field Installed Accessories | | |
| 33CSENSEN | Enthalpy Transmitter | 1 |

Certified Drawing for RTU 6

Project: Nike - Glenarden, MD
Prepared By:

02/01/2022
08:29PM

NOTES:

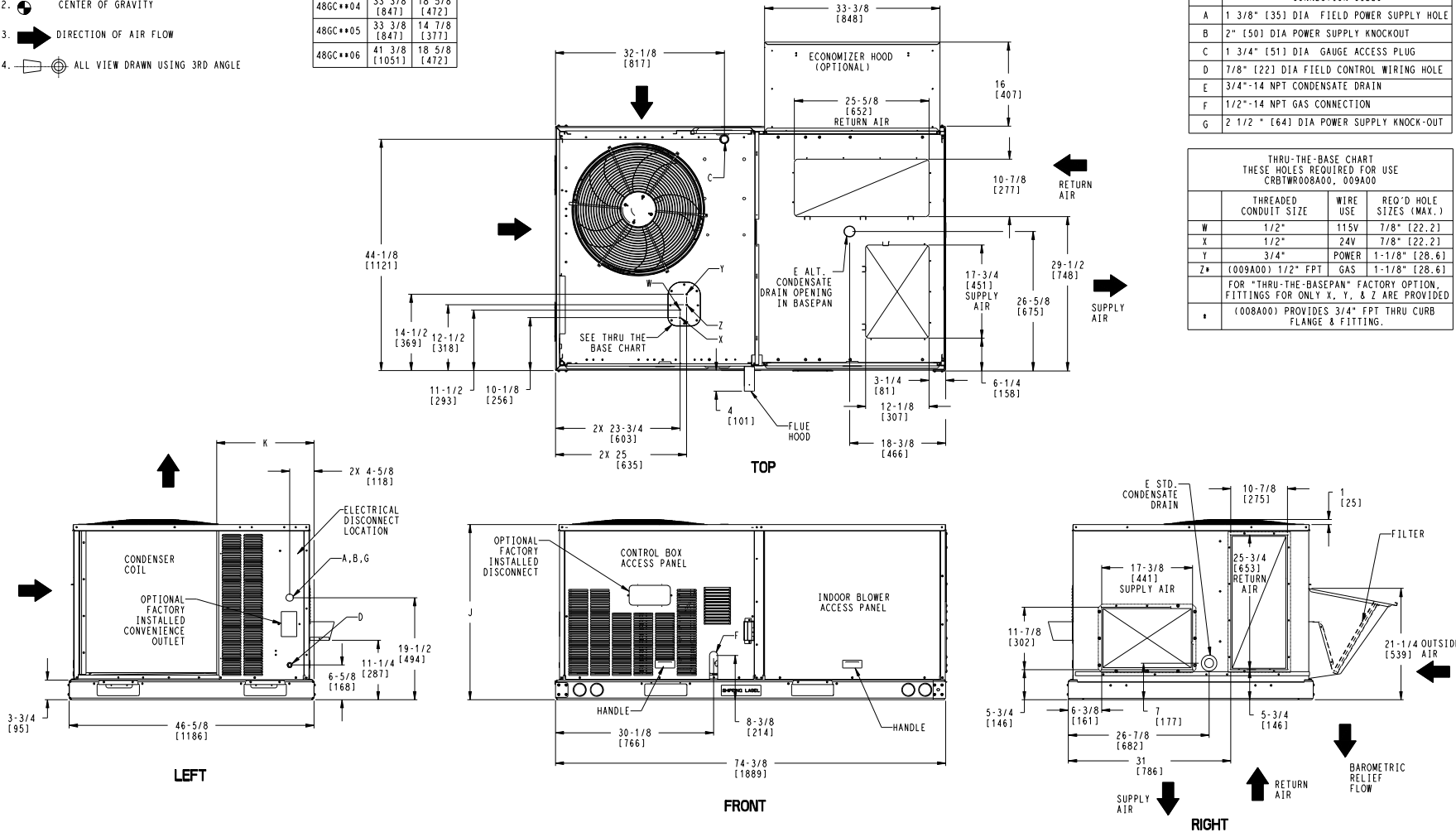
1. DIMENSIONS ARE IN INCHES. DIMENSIONS IN [] ARE IN MILLIMETERS.
2. CENTER OF GRAVITY
3. DIRECTION OF AIR FLOW
4. ALL VIEW DRAWN USING 3RD ANGLE

| UNIT | J | K |
|----------|---------------|--------------|
| 48GC**04 | 33 3/8 [847] | 18 5/8 [472] |
| 48GC**05 | 33 3/8 [847] | 14 7/8 [377] |
| 48GC**06 | 41 3/8 [1051] | 18 5/8 [472] |

THIS DOCUMENT IS THE PROPERTY OF UTC CLIMATE, CONTROLS & SECURITY AND IS DELIVERED UPON THE EXPRESS CONDITION THAT THE CONTENTS WILL NOT BE DISCLOSED OR USED WITHOUT WRITTEN CONSENT.

| CONNECTION SIZES | |
|------------------|---|
| A | 1 3/8" [35] DIA FIELD POWER SUPPLY HOLE |
| B | 2" [50] DIA POWER SUPPLY KNOCKOUT |
| C | 1 3/4" [51] DIA GAUGE ACCESS PLUG |
| D | 7/8" [22] DIA FIELD CONTROL WIRING HOLE |
| E | 3/4"-14 NPT CONDENSATE DRAIN |
| F | 1/2"-14 NPT GAS CONNECTION |
| G | 2 1/2" [64] DIA POWER SUPPLY KNOCK-OUT |

| THRU-THE-BASE CHART THESE HOLES REQUIRED FOR USE CRBTWR008A00, 009A00 | | | |
|---|-------------------|-------------------------|---------------|
| THREADED CONDUIT SIZE | WIRE USE | REQ'D HOLE SIZES (MAX.) | |
| W | 1/2" | 115V | 7/8" [22.2] |
| X | 1/2" | 24V | 7/8" [22.2] |
| Y | 3/4" | POWER | 1-1/8" [28.6] |
| Z* | (009A00) 1/2" FPT | GAS | 1-1/8" [28.6] |
| FOR "THRU-THE-BASEPAN" FACTORY OPTION, FITTINGS FOR ONLY X, Y, & Z ARE PROVIDED | | | |
| * (008A00) PROVIDES 3/4" FPT THRU CURB FLANGE & FITTING. | | | |



| | | | | | | |
|--------------------|--------|----------|------------|--|------------|-----|
| ITC CLASSIFICATION | SHEET | DATE | SUPERCEDES | 48GC 04-06 SINGLE PACKAGE ELECTRICAL COOLING WITH GAS HEAT | 48TC003099 | REV |
| U.S. ECCN: NSR | 1 OF 3 | 09/07/18 | 08/03/18 | | | B |

Certified Drawing for RTU 6

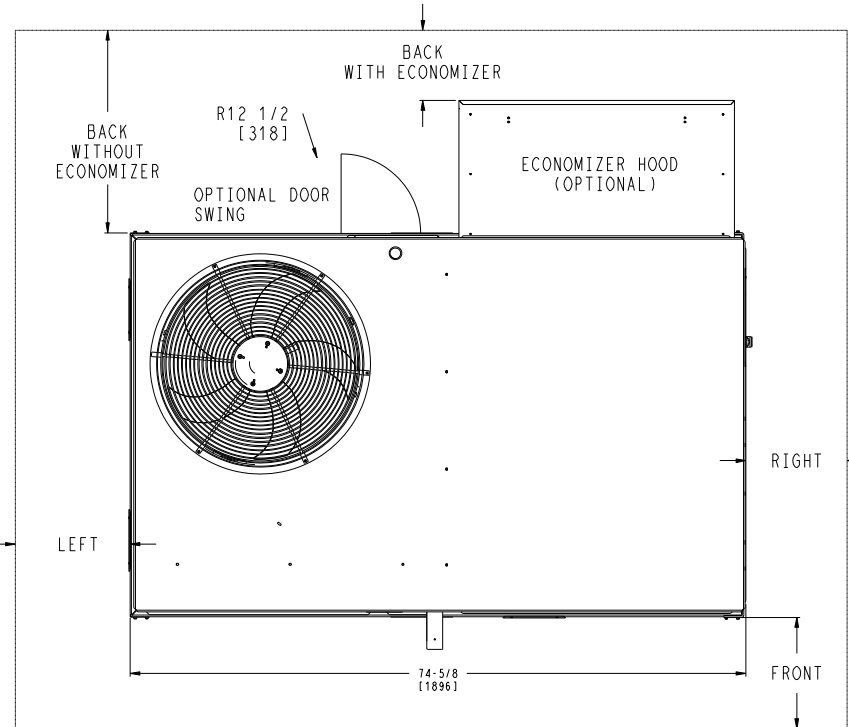
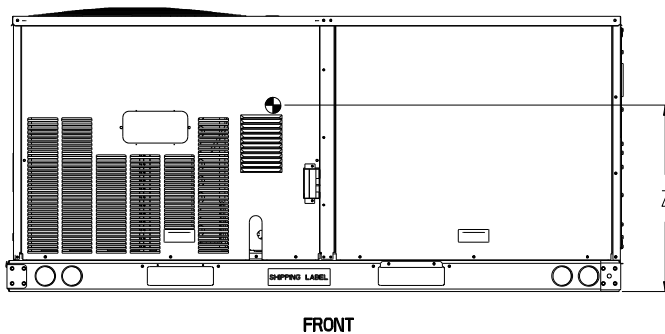
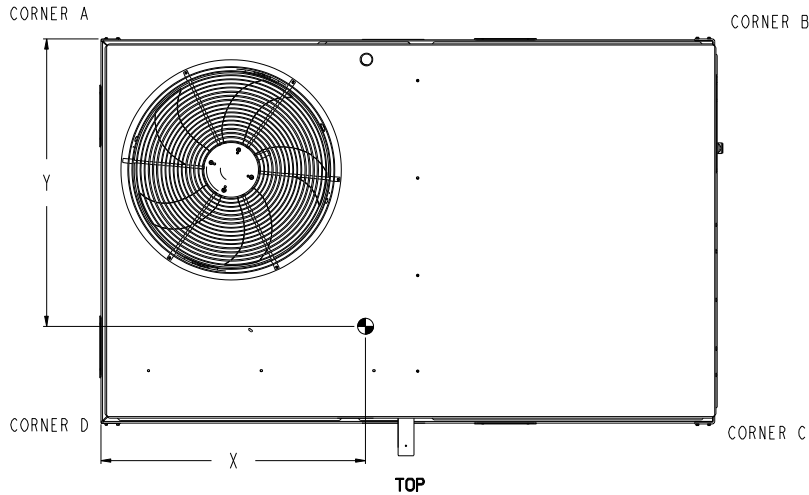
Project: Nike - Glenarden, MD
Prepared By:

02/01/2022
08:29PM

| UNIT | STD. UNIT WEIGHT * | | CORNER WEIGHT (A) | | CORNER WEIGHT (B) | | CORNER WEIGHT (C) | | CORNER WEIGHT (D) | | C.G. | | | HEIGHT |
|----------|--------------------|-----|-------------------|-----|-------------------|-----|-------------------|-----|-------------------|-----|--------------|--------------|--------------|--------|
| | LBS. | KG. | LBS. | KG. | LBS. | KG. | LBS. | KG. | LBS. | KG. | X | Y | Z | |
| 48GC**04 | 513 | 233 | 131 | 59 | 127 | 58 | 125 | 57 | 130 | 59 | 36 1/2 [927] | 23 1/4 [591] | 18 1/4 [464] | |
| 48GC**05 | 555 | 252 | 142 | 64 | 137 | 62 | 135 | 61 | 141 | 64 | 36 1/2 [927] | 23 1/4 [591] | 18 [457] | |
| 48GC**06 | 600 | 272 | 161 | 73 | 151 | 68 | 140 | 64 | 149 | 68 | 36 [914] | 22 1/2 [572] | 19 3/8 [492] | |

* - STANDARD UNIT WEIGHT IS WITH LOW GAS HEAT AND WITHOUT PACKAGING.
FOR OTHER OPTINS AND ACCESSORIES REFER TO THE PRODUCT DATA CATALOG.

Carrier THIS DOCUMENT IS THE PROPERTY OF UTC CLIMATE CONTROLS & SECURITY AND IS DELIVERED UPON THE EXPRESS CONDITION THAT THE CONTENTS WILL NOT BE DISCLOSED OR USED WITHOUT WRITTEN CONSENT. SUBMISSION OF THESE DRAWINGS OR DOCUMENTS DOES NOT CONSTITUTE PART PERFORMANCE OR ACCEPTANCE OF CONTRACT.



NOTES:

- FOR ALL MINIMUM CLEARANCES LOCAL CODES OR JURISDICTIONS MAY PREVAIL.

| SURFACE | CLEARANCE | | OPERATING CLEARANCE |
|-------------|---------------------------------|------------------------------------|---------------------|
| | SERVICE WITH CONDUCTIVE BARRIER | SERVICE WITH NONCONDUCTIVE BARRIER | |
| FRONT | 48 [1219mm] | 36 [914mm] | 18 [457mm] |
| LEFT | 48 [1219mm] | 42 [1067mm] | 18 [457mm] |
| BACK | 48 [1219mm] | 42 [1067mm] | 18 [457mm] |
| BACK W/HOOD | 36 [914mm] | 36 [914mm] | 18 [457mm] |
| RIGHT | 36 [914mm] | 36 [914mm] | 18 [457mm] |
| TOP | 72 [1829mm] | 72 [1829mm] | 72 [1829mm] |

| | | | | | | |
|-------------------------------------|-----------------|------------------|------------------------|--|------------|----------|
| ITC CLASSIFICATION U.S. ECCN:NSR | SHEET 2 OF 3 | DATE 09/07/18 | SUPERCEDES 08/03/18 | 48GC 04-06 SINGLE PACKAGE ELECTRICAL COOLING WITH GAS HEAT | 48TC003099 | REV B |
|-------------------------------------|-----------------|------------------|------------------------|--|------------|----------|

Certified Drawing for RTU 6

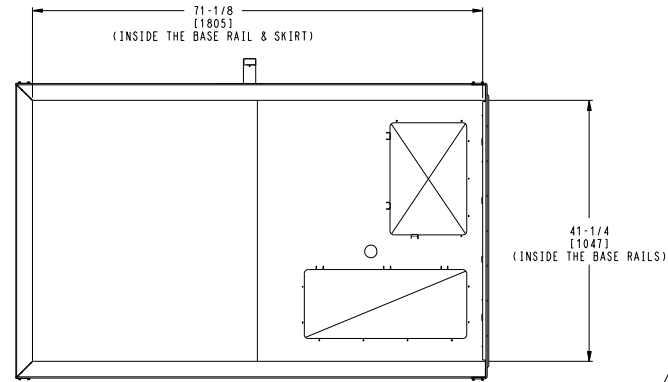
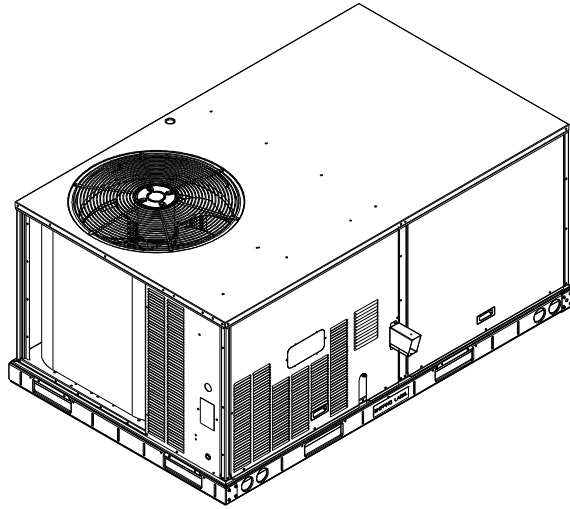
Project: Nike - Glenarden, MD
Prepared By:

02/01/2022
08:29PM

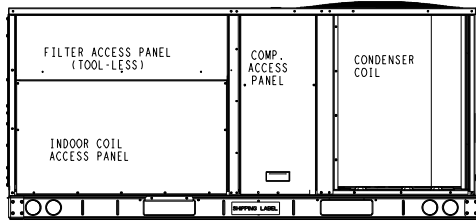
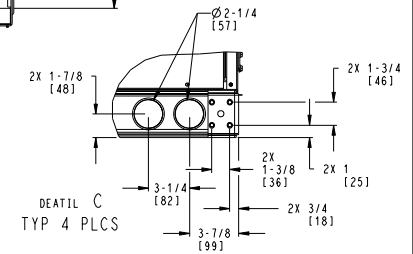
Carrier
United Technologies

THIS DOCUMENT IS THE PROPERTY OF UTC CLIMATE, CONTROLS & SECURITY AND IS DELIVERED UPON THE EXPRESS CONDITION THAT THE CONTENTS WILL NOT BE DISCLOSED OR USED WITHOUT WRITTEN CONSENT.

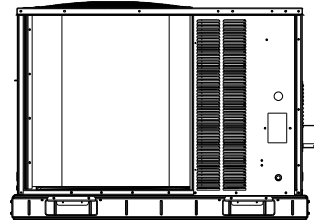
SUBMISSION OF THESE DRAWINGS OR DOCUMENTS DOES NOT CONSTITUTE PART PERFORMANCE OR ACCEPTANCE OF CONTRACT.



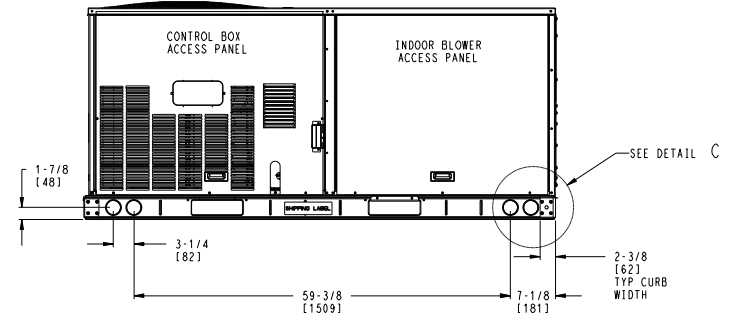
INSIDE BASERAIL DIMENSIONS
BOTTOM



BACK



LEFT



FRONT

| | | | | | | |
|--------------------|--------|----------|------------|--|-----------|-----|
| ITC CLASSIFICATION | SHEET | DATE | SUPERCEDES | 48GC 04-06 SINGLE PACKAGE ELECTRICAL COOLING WITH GAS HEAT | 48TC03099 | REV |
| U.S. ECCN:NSR | 3 OF 3 | 09/07/18 | 08/03/18 | | | B |

Performance Summary For RTU 6

Project: Nike - Glenarden, MD
Prepared By:

02/01/2022
08:29PM

Part Number:48GCDM04A2Q6-3W1C0

ARI SEER:..... 16.10

Base Unit Dimensions

Unit Length:..... 74.4 in
Unit Width: 46.6 in
Unit Height: 33.4 in

Operating Weight

Base Unit Weight: 513 lb
E-coat Al/Cu - E-coat Al/Cu - Louvered Hail Guards:..... 13 lb
SystemVu Controls: 2 lb
Enthalpy Ultra Low Leak Econo w/Baro Relief: 35 lb
Unpowered Convenience Outlet: 4 lb
Non-Fused Disconnect:..... 5 lb

Total Operating Weight: 572 lb

Unit

Unit Voltage-Phase-Hertz: 460-3-60
Air Discharge:..... Vertical
Fan Drive Type:..... Vane Axial
Actual Airflow: 1200 CFM
Site Altitude:..... 282 ft

Cooling Performance

Condenser Entering Air DB:..... 95.0 F
Evaporator Entering Air DB:..... 76.3 F
Evaporator Entering Air WB: 65.5 F
Entering Air Enthalpy: 30.44 BTU/lb
Evaporator Leaving Air DB:..... 58.6 F
Evaporator Leaving Air WB: 56.4 F
Evaporator Leaving Air Enthalpy:..... 24.09 BTU/lb
Gross Cooling Capacity: 33.94 MBH
Gross Sensible Capacity:..... 22.64 MBH
Compressor Power Input: 2.46 kW
Coil Bypass Factor: 0.128

Heating Performance

Heating Airflow: 1200 CFM
Entering Air Temp: 58.3 F
Leaving Air Temp:..... 100.4 F
Gas Heating Input Capacity: 50.0 / 67.0 MBH
Gas Heating Output Capacity: 40.0 / 54.0 MBH
Temperature Rise: 42.1 F
Thermal Efficiency (%):..... 81.0

Supply Fan

External Static Pressure:..... 0.80 in wg
Options / Accessories Static Pressure
Economizer:..... 0.04 in wg
Total Application Static (ESP + Unit Opts/Acc.): 0.84 in wg
Fan RPM:..... 1856
Fan Power:..... 0.46 BHP
NOTE: Selected IFM RPM Range: 1129 - 2190

Selection includes construction throwaway filter into the base fan curve. This filter is not MERV Rated.

Electrical Data

Voltage Range: 414 - 506

Performance Summary For RTU 6

Project: Nike - Glenarden, MD
 Prepared By:

02/01/2022
 08:29PM

| | |
|--|----------------|
| Compressor #1 RLA:..... | 5.7 |
| Compressor #1 LRA:..... | 38 |
| Indoor Fan Motor Type:..... | MED |
| Indoor Fan Motor FLA:..... | 1.2 |
| Combustion Fan Motor FLA (ea):..... | 0.25 |
| Power Supply MCA:..... | 10 |
| Power Supply MOCP (Fuse or HACR):..... | 15 |
| Disconnect Size FLA:..... | 9 |
| Disconnect Size LRA:..... | 42 |
| Electrical Convenience Outlet:..... | None |
| Outdoor Fan [Qty / FLA (ea)]:..... | 1 / 0.8 |

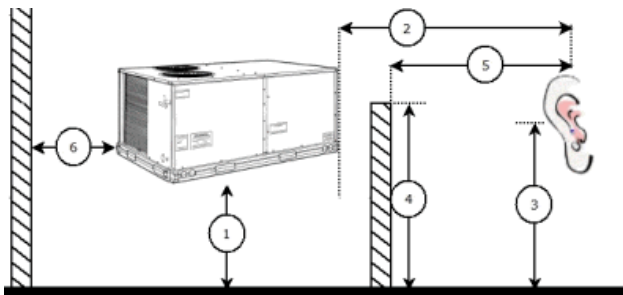
Control Panel SCCR: 5kA RMS at Rated Symmetrical Voltage

Acoustics

Sound Power Levels, db re 10E-12 Watts

| | Discharge | Inlet | Outdoor |
|------------|-----------|-------|---------|
| 63 Hz | 90.9 | 84.8 | 85.6 |
| 125 Hz | 82.4 | 77.5 | 84.7 |
| 250 Hz | 76.2 | 68.5 | 80.5 |
| 500 Hz | 67.7 | 61.1 | 76.0 |
| 1000 Hz | 65.0 | 63.4 | 72.4 |
| 2000 Hz | 62.3 | 54.7 | 68.0 |
| 4000 Hz | 57.9 | 48.5 | 62.8 |
| 8000 Hz | 56.5 | 42.7 | 59.3 |
| A-Weighted | 73.5 | 68.1 | 79.0 |

Advanced Acoustics



Advanced Acoustics Parameters

- 1. Unit height above ground: **30.0** ft
- 2. Horizontal distance from unit to receiver: **50.0** ft
- 3. Receiver height above ground: **5.7** ft
- 4. Height of obstruction: **0.0** ft
- 5. Horizontal distance from obstruction to receiver: **0.0** ft
- 6. Horizontal distance from unit to obstruction: **0.0** ft

Detailed Acoustics Information

| Octave Band Center Freq. Hz | 63 | 125 | 250 | 500 | 1k | 2k | 4k | 8k | Overall |
|-----------------------------|------|------|------|------|------|------|------|------|----------|
| A | 85.6 | 84.7 | 80.5 | 76.0 | 72.4 | 68.0 | 62.8 | 59.3 | 89.2 Lw |
| B | 59.4 | 68.6 | 71.9 | 72.8 | 72.4 | 69.2 | 63.8 | 58.2 | 78.5 LwA |
| C | 53.2 | 52.3 | 48.1 | 43.6 | 40.0 | 35.6 | 30.4 | 26.9 | 56.8 Lp |

Performance Summary For RTU 6

Project: Nike - Glenarden, MD
 Prepared By:

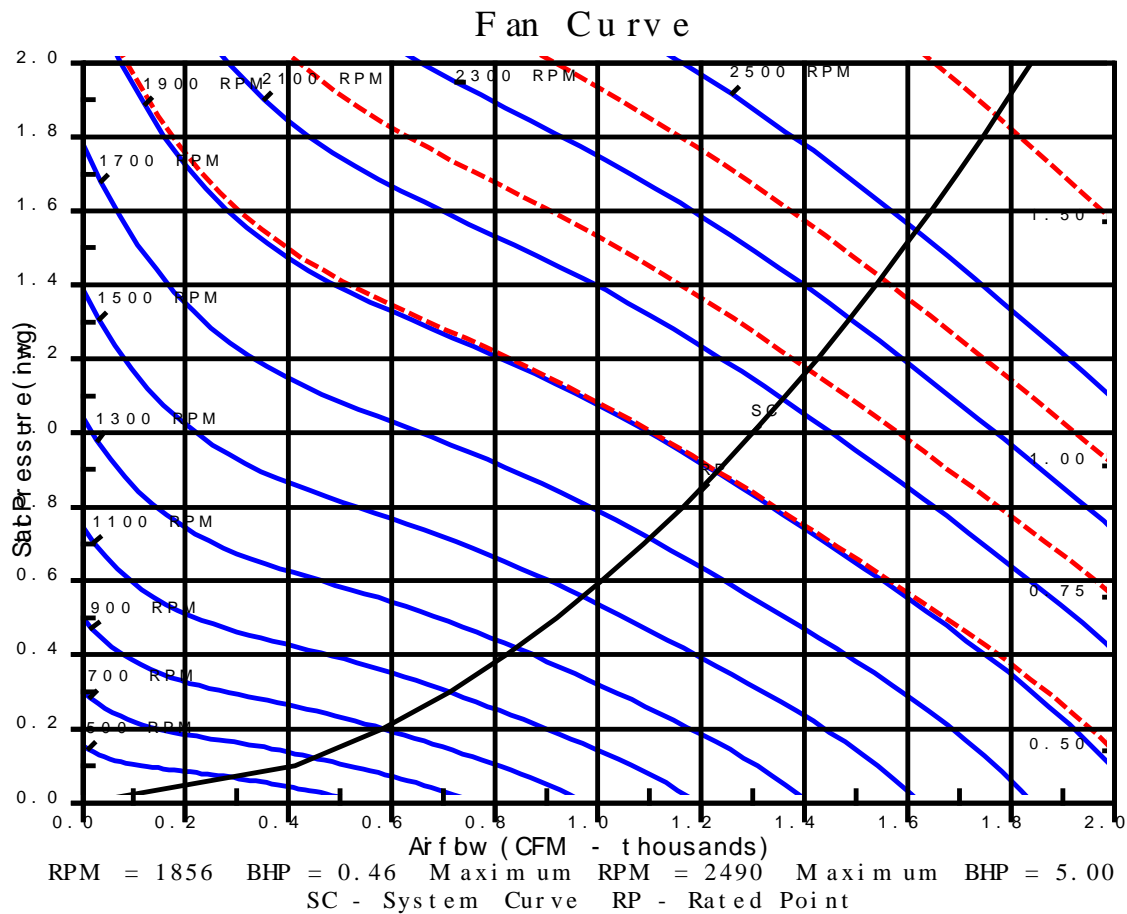
02/01/2022
 08:29PM

| | | | | | | | | | |
|---|------|------|------|------|------|------|------|------|----------|
| D | 27.0 | 36.2 | 39.5 | 40.4 | 40.0 | 36.8 | 31.4 | 25.8 | 46.1 LpA |
|---|------|------|------|------|------|------|------|------|----------|

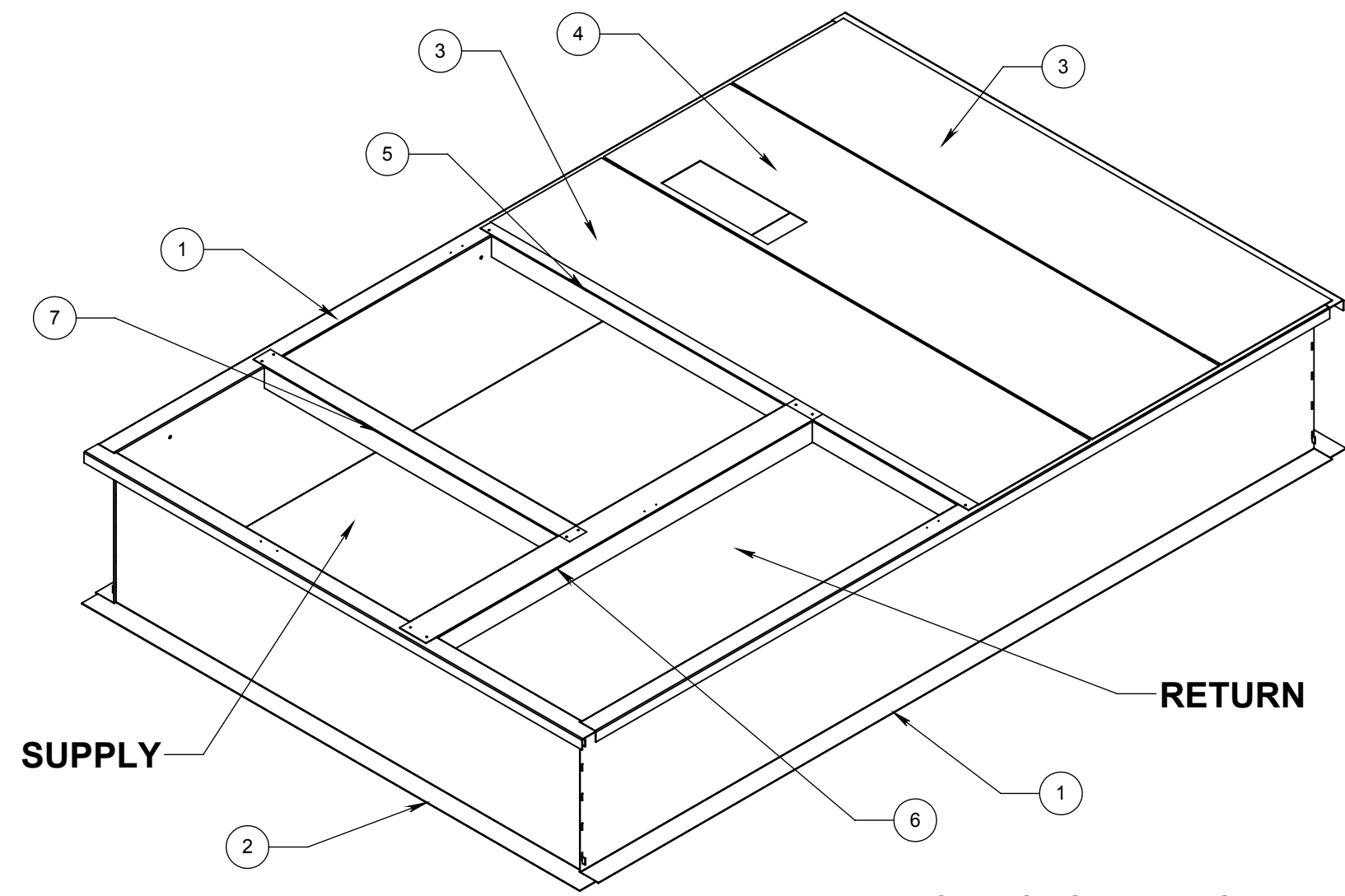
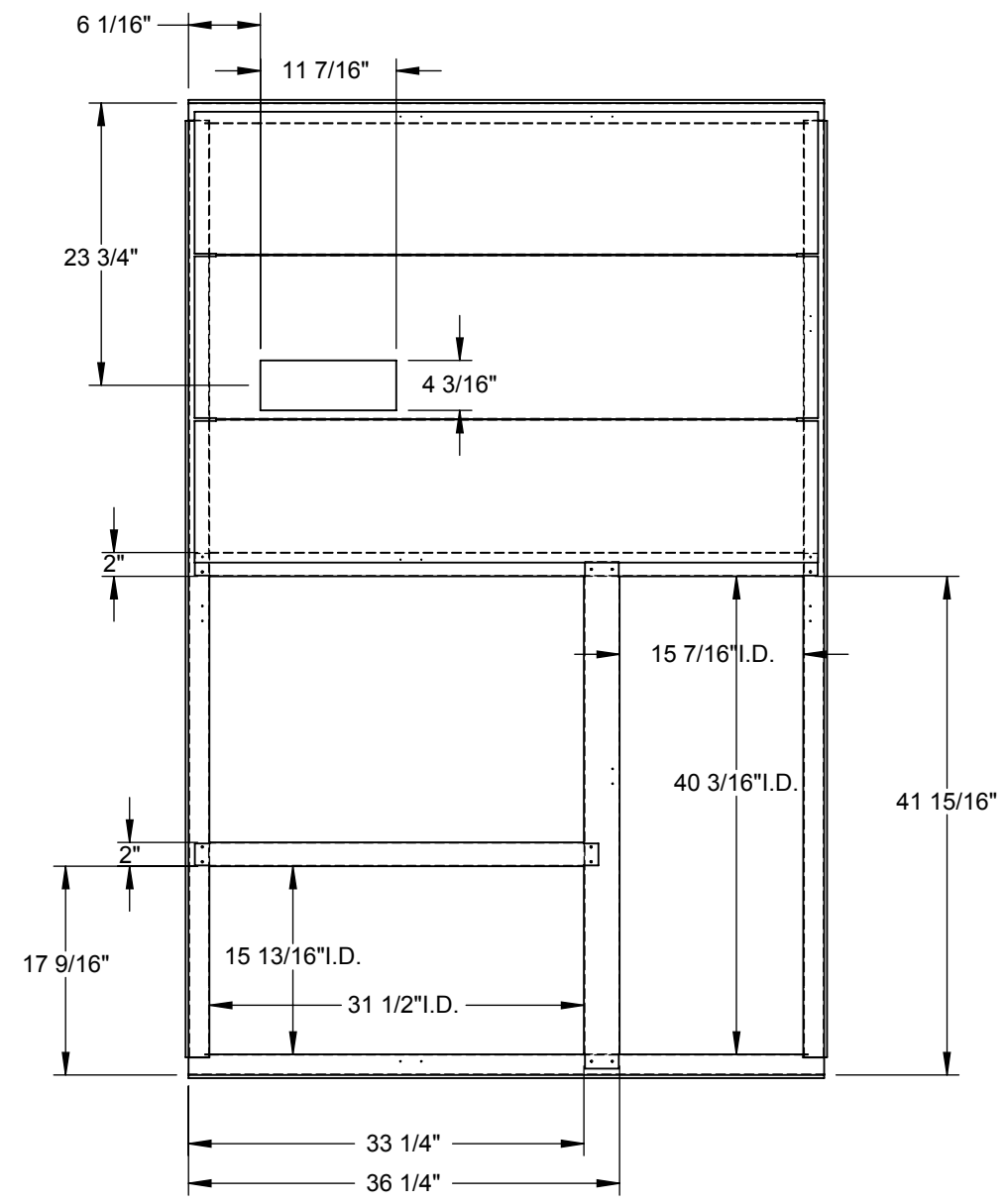
Legend

- A Sound Power Levels at Unit's Acoustic Center, Lw
- B A-Weighted Sound Power Levels at Unit's Acoustic Center, LwA
- C Sound Pressure Levels at Specific Distance from Unit, Lp
- D A-Weighted Sound Pressure Levels at Specific Distance from Unit, LpA

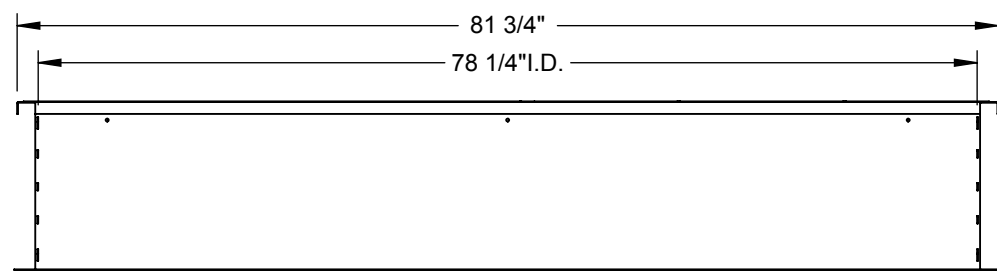
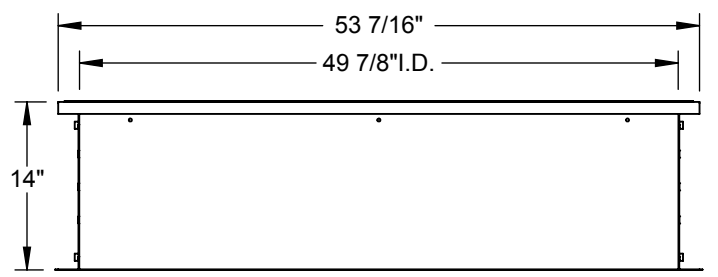
Calculation methods used in this program are patterned after the ASHRAE Guide; other ASHRAE Publications and the AHRI Acoustical Standards. While a very significant effort has been made to insure the technical accuracy of this program, it is assumed that the user is knowledgeable in the art of system sound estimation and is aware of the tolerances involved in real world acoustical estimation. This program makes certain assumptions as to the dominant sound sources and sound paths which may not always be appropriate to the real system being estimated. Because of this, no assurances can be offered that this software will always generate an accurate sound prediction from user supplied input data. If in doubt about the estimation of expected sound levels in a space, an Acoustical Engineer or a person with sound prediction expertise should be consulted.



| REVISIONS | | | |
|-----------|----------------------------|----------|----------|
| REV | DESCRIPTION | DATE | APPROVED |
| 1 | INITIAL DESIGN OF HV CURBS | 12/12/16 | MWG |



CURBS FOR 7-1/2 TO 12-1/2 TON UNITS



| ITEM | QTY. | UNIT | PART NO. | DESCRIPTION |
|------|------|------|---------------|-------------------------------|
| 7 | 1 | EA | | |
| 6 | 1 | EA | | |
| 5 | 1 | EA | | |
| 4 | 1 | EA | 2-0014-4005-7 | COMP PAN, DOUBLE BEND, MIDDLE |
| 3 | 2 | EA | 2-0014-4005-6 | COMP PAN, 1 BEND, ENDS |
| 2 | 2 | EA | 2-0014-4005-2 | SIDEWALL B |
| 1 | 2 | EA | 2-0014-4000 | SIDEWALL A |

UNLESS OTHERWISE SPECIFIED, TOLERANCES ARE:
 X ± 0.05
 XX ± 0.03
 XXX ± 0.01
 DIMENSIONS ARE AS FOLLOWS:
 1.00 in [25.40 mm]

APPROVALS: _____ DATE: 6/14/2017
 DRAWN: creckard
 CHECKED: _____
 MGMT: _____

CDI 9560 85TH AVE. N.
 MAPLE GROVE, MN 55369
 (763)391-7790
 (763)391-7851

TITLE: **STRAIGHT CURB, 14" HIGH 4005 (CRRFCURB003A00)**

FILE NAME: 2-0014-4005
 DRAWING NO.: **2-0014-4005**
 ECO #: _____

SCALE: 1:16 SHEET: 1 OF 5

REV: **01**

NOTES:

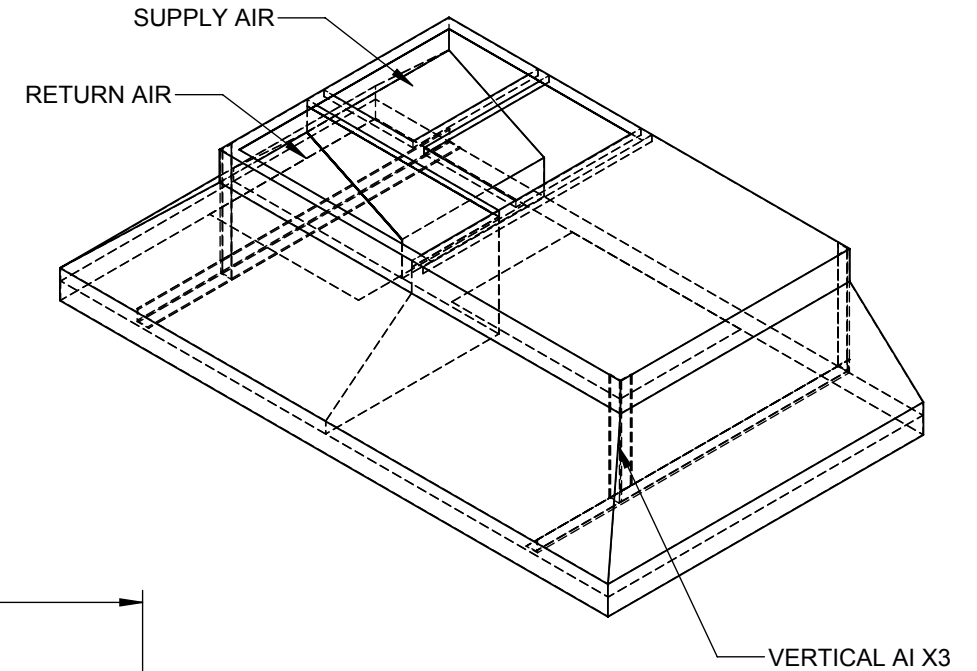
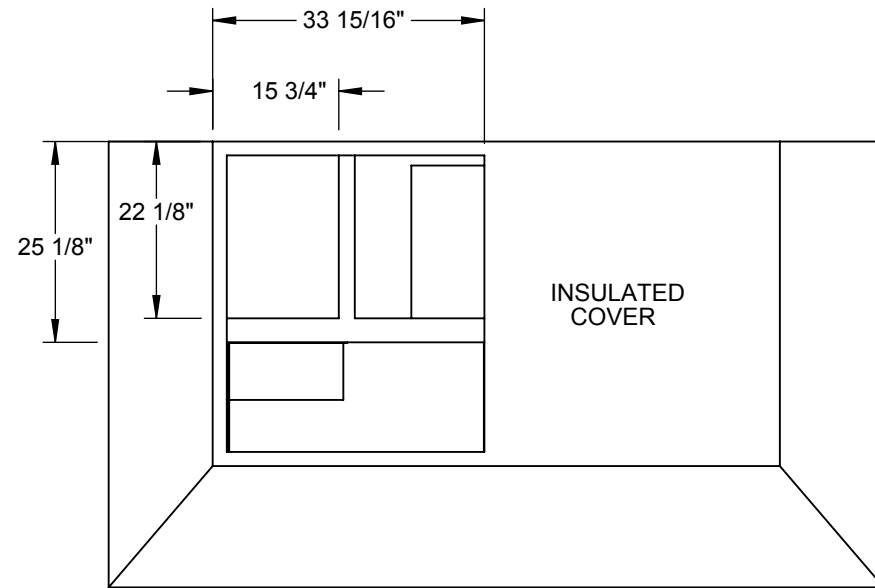
MATERIAL: 18 ga. GAL STEEL
1 1/2" ADDED TO EXISTING CURB O.D.
1" DUCT INSULATION (R VALUE 3.85)
GASKET PROVIDED WITH CURB

DIMENSIONED AND TOLERENCED PER ANSI Y14.5M-1982

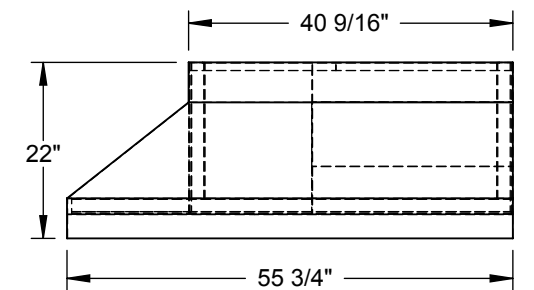
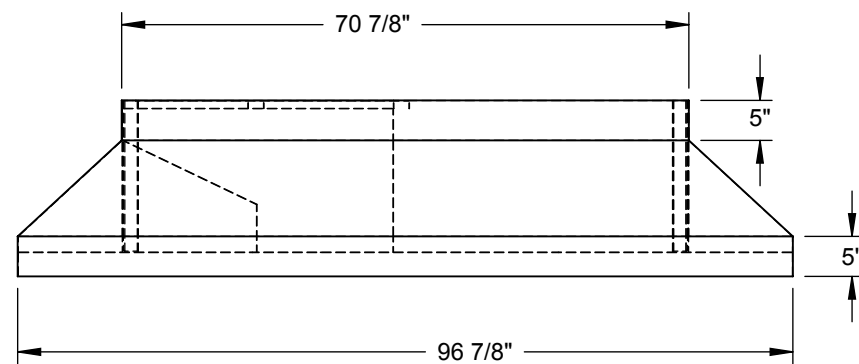
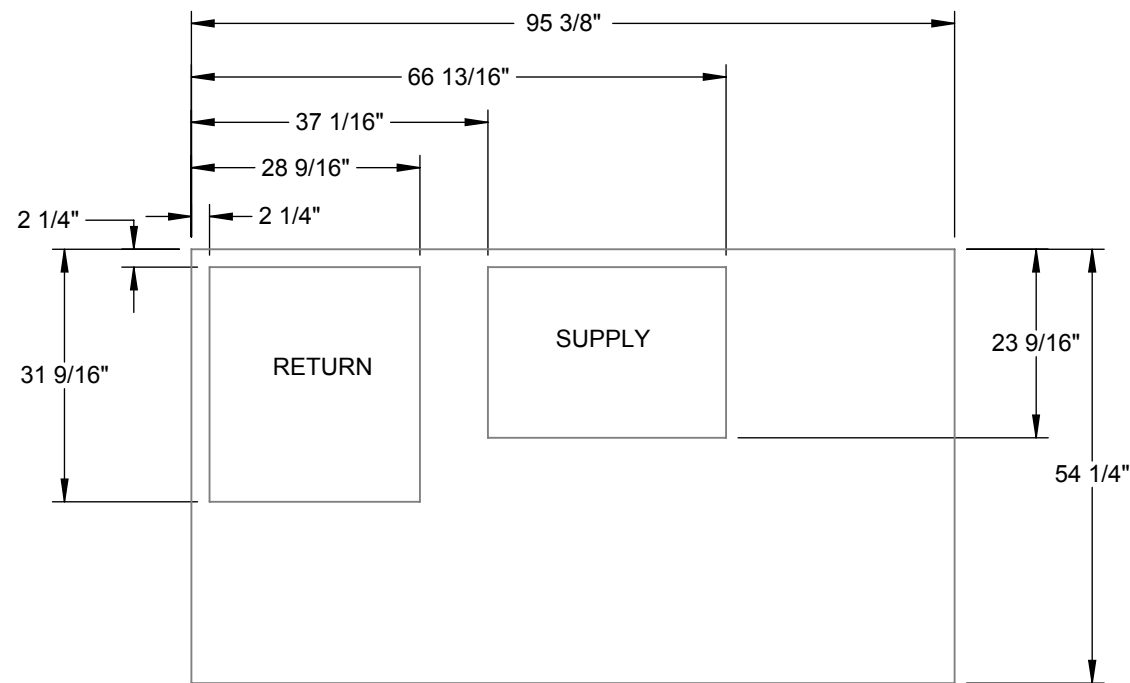
REVISIONS

| REV. | ECO# | DESCRIPTION | DATE | APPROVED |
|------|------|-----------------|-----------|----------|
| 1 | | INITIAL DRAWING | 1/15/2015 | DES |

Attn: _____
 Tag: _____
 Approval: _____



EXISTING CURB LAYOUT



CURB SHOWN IS CDI STANDARD CONFIGURATION CDI RESERVES THE RIGHT TO CHANGE LAYOUT WITHOUT NOTIFICATION. IF CURB IS NEEDED IN A DIFFERENT CONFIGURATION CDI MUST BE NOTIFIED PRIOR TO PLACING AN ORDER.

OPERATIONAL HEIGHT OF CDI ADAPTER IS 3" LESS THAN OVERALL CURB HEIGHT SHOWN.

THIS DRAWING & THE INFORMATION CONTAINED THEREIN IS THE CONFIDENTIAL, PROPRIETARY INFORMATION OF CRYSTAL DISTRIBUTION INC., & MAY NOT BE USED OR REPRODUCED WITHOUT THE APPROVAL OF CRYSTAL DISTRIBUTION, INC. ALL RIGHTS RESERVED

| APPROVALS | DATE |
|-------------------|-----------|
| DRAWN: dsamuelson | 1/15/2015 |
| CHECKED: | |

TITLE/FILE NAME:
1-2085-4000

- *VERIFY EXISTING CURB OD
- *VERIFY SUPPLY AND RETURN OPENINGS
- *NOTE ANY CHANGES
- *CALL WITH ANY QUESTIONS
- *FAX BACK IF DRAWING IS OK AS IS

3RD ANGLE PROJECTION

Contact us @
 www.cdicurbs.com
 or
 1-888-234-7001

| | | |
|---|---------------|------------------|
| APPROXIMATE CURB WEIGHT (LBS.) 226.01 | ECO #: . | REV: 1 |
| SCALE: 1:24 | SHEET: 1 OF 2 | |

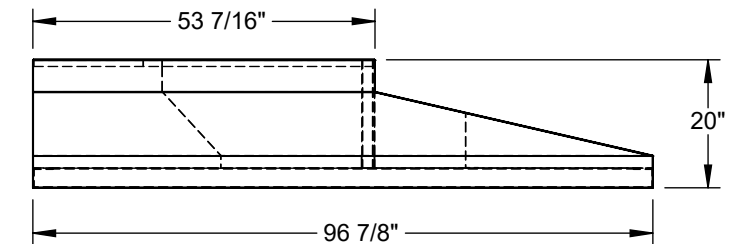
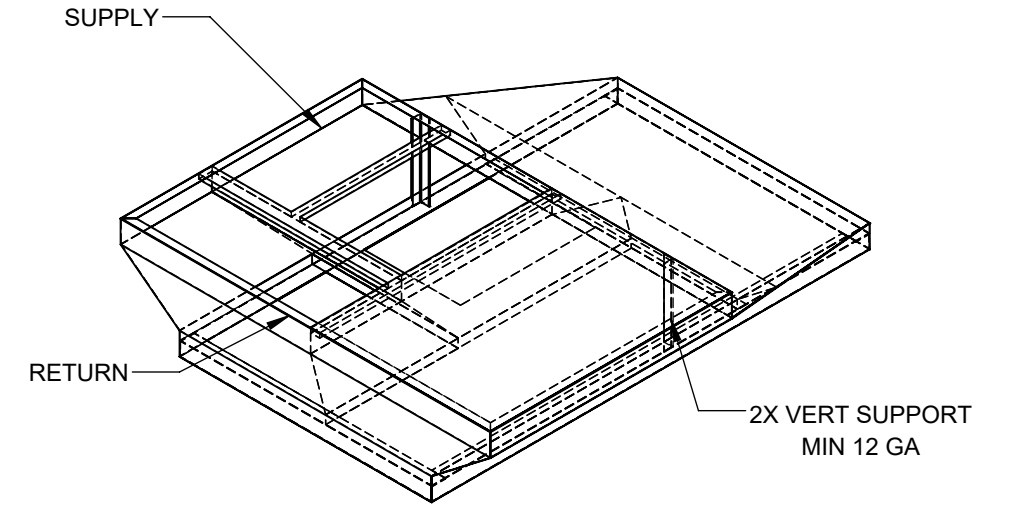
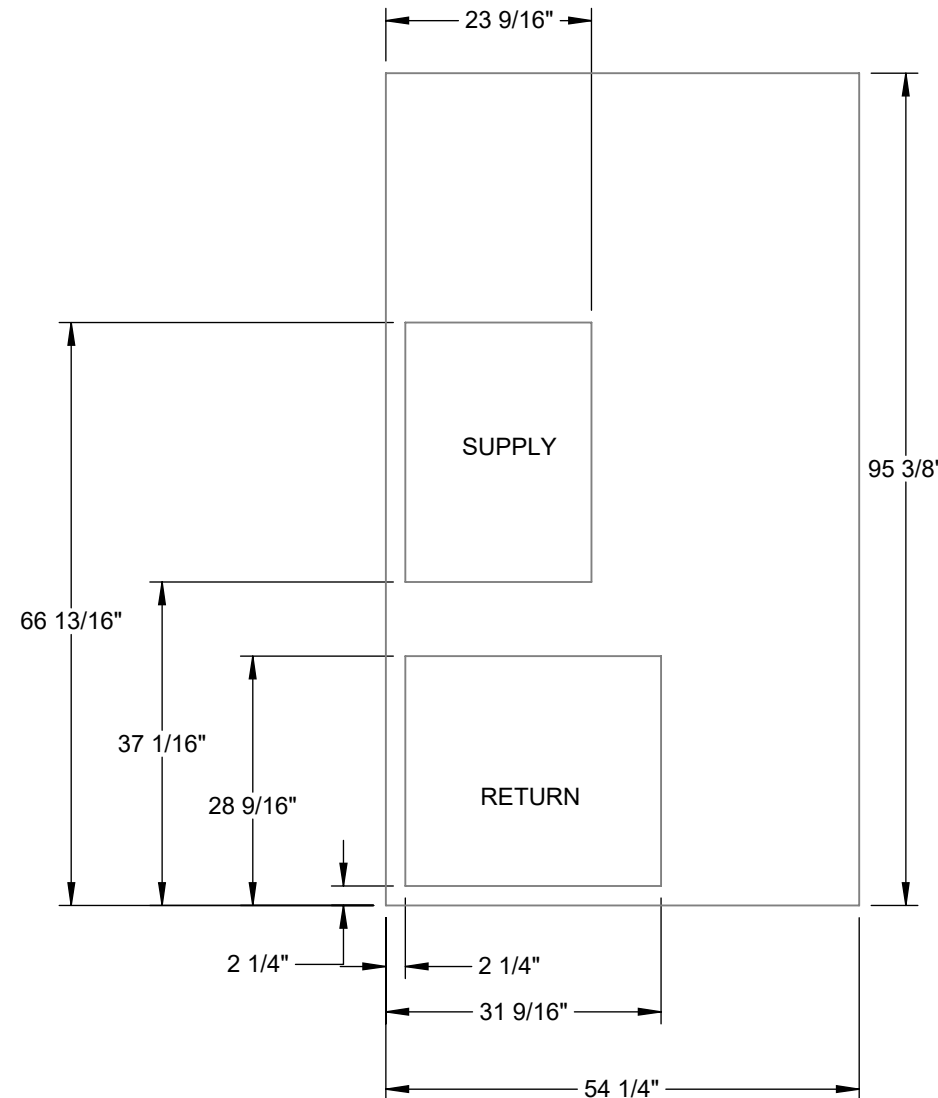
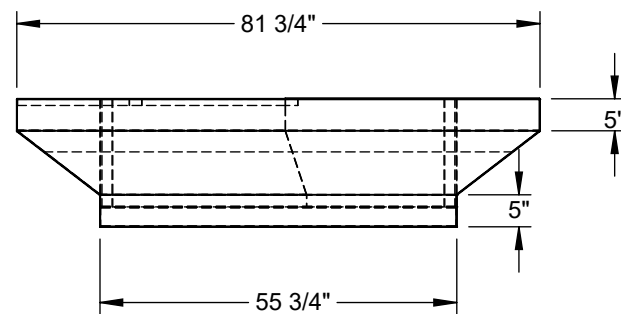
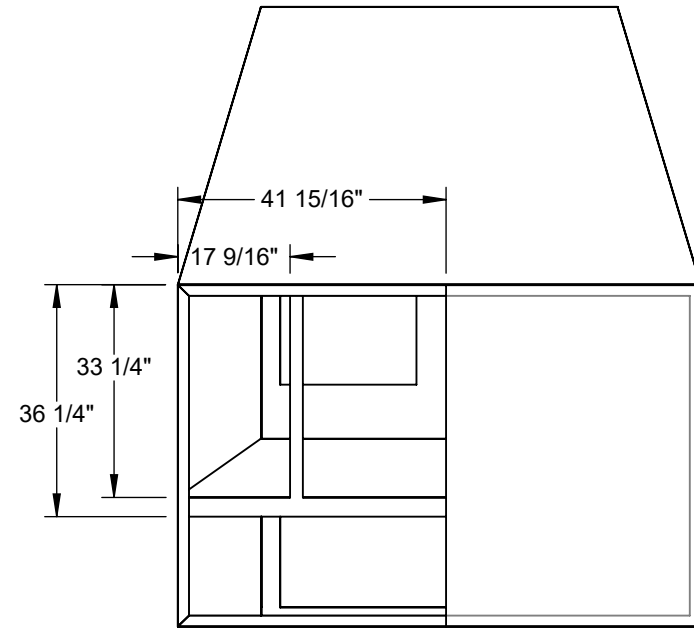
| |
|--|
| OPTIONS: |
| MATERIAL: 18ga. GALV STEEL |
| INSULATED PANELS (WHERE REQUIRED) |
| 1" 1-1/2LB DUCT INSULATION (R VALUE 3.85) |
| GASKET PROVIDED WITH CURB |
| 1 1/2" ADDED TO EXISTING CURB O.D. |

DIMENSIONED AND TOLERENCED PER ANSI Y14.5M-1982

| REVISIONS | | | | |
|-----------|------|-----------------|---------|----------|
| REV. | ECO# | DESCRIPTION | DATE | APPROVED |
| 1 | | INITIAL DRAWING | 8/23/21 | TC |

Attn: _____
 Tag: _____
 Approval: _____

EXISTING CURB LAYOUT



CURB SHOWN IS CDI STANDARD CONFIGURATION CDI RESERVES THE RIGHT TO CHANGE LAYOUT WITHOUT NOTIFICATION. IF CURB IS NEEDED IN A DIFFERENT CONFIGURATION CDI MUST BE NOTIFIED PRIOR TO PLACING AN ORDER.

OPERATIONAL HEIGHT OF CDI ADAPTER IS 3" LESS THAN OVERALL CURB HEIGHT SHOWN.

| | | | | |
|---|--|--------------------------|--|---|
| THIS DRAWING & THE INFORMATION CONTAINED THEREIN IS THE CONFIDENTIAL, PROPRIETARY INFORMATION OF CRYSTAL DISTRIBUTION INC., & MAY NOT BE USED OR REPRODUCED WITHOUT THE APPROVAL OF CRYSTAL DISTRIBUTION, INC. ALL RIGHTS RESERVED. | APPROVALS DRAWN: tcheigren CHECKED: _____ | DATE 8/23/2021 | TITLE/FILE NAME: 1-2085-4005 | |
| | DIMENSIONS ARE AS FOLLOWS: 1.00 in [25.40 mm] | | | APPROXIMATE CURB WEIGHT (LBS.) 282.04 |
| *VERIFY EXISTING CURB OD *VERIFY SUPPLY AND RETURN OPENINGS *NOTE ANY CHANGES *CALL WITH ANY QUESTIONS *FAX BACK IF DRAWING IS OK AS IS | 3RD ANGLE PROJECTION | | Contact us @ www.cdicurbs.com or 1-888-234-7001 | REVISION 1 |
| | | | SCALE: 1:22 | SHEET: 1 OF 6 |

OPTIONS:

| |
|--|
| MATERIAL: 18ga. GALV STEEL |
| INSULATED PANELS (WHERE REQUIRED) |
| 1" 1-1/2LB DUCT INSULATION (R VALUE 3.85) |
| GASKET PROVIDED WITH CURB |
| 1 1/2" ADDED TO EXISTING CURB O.D. |

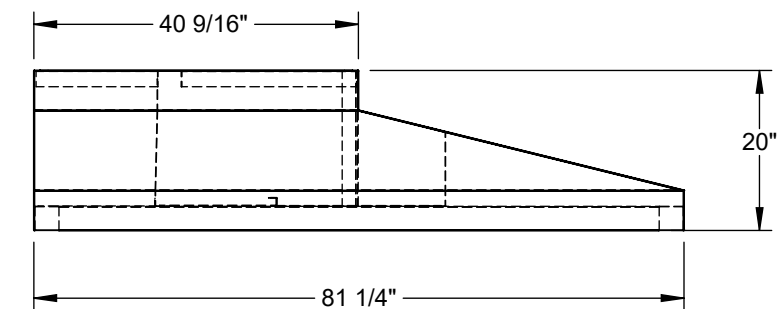
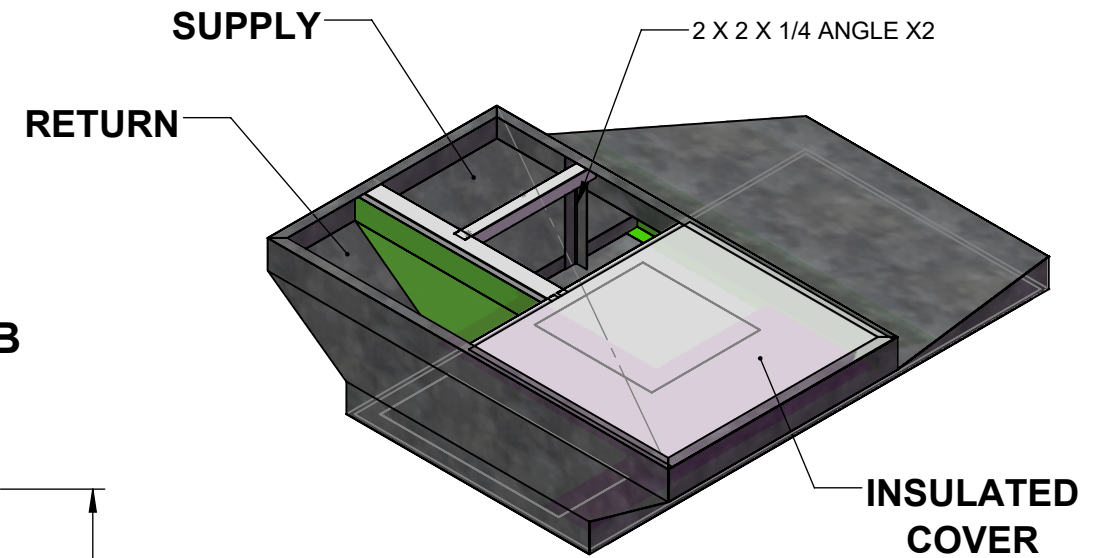
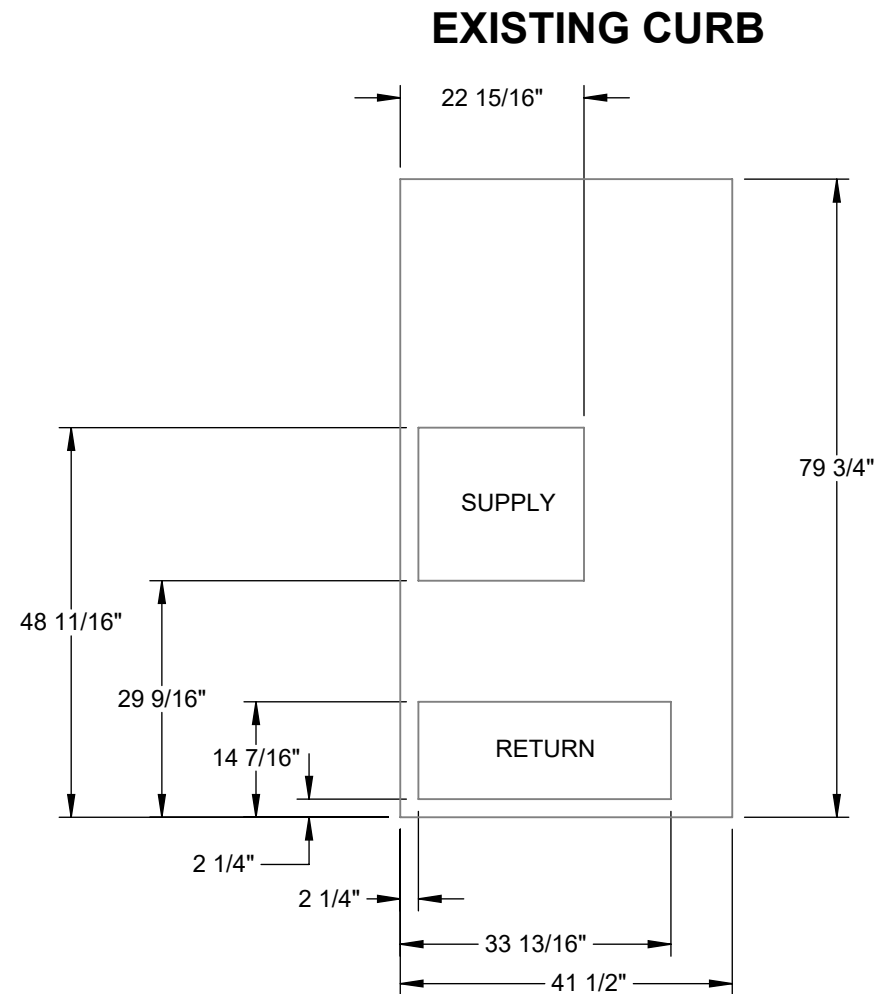
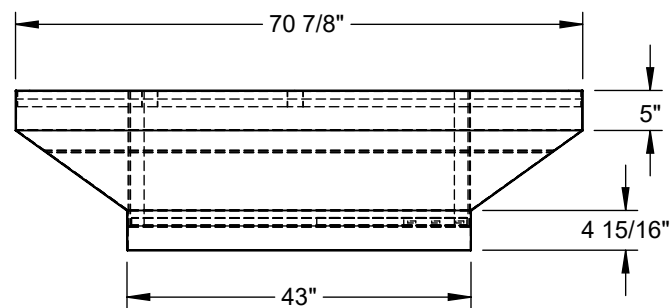
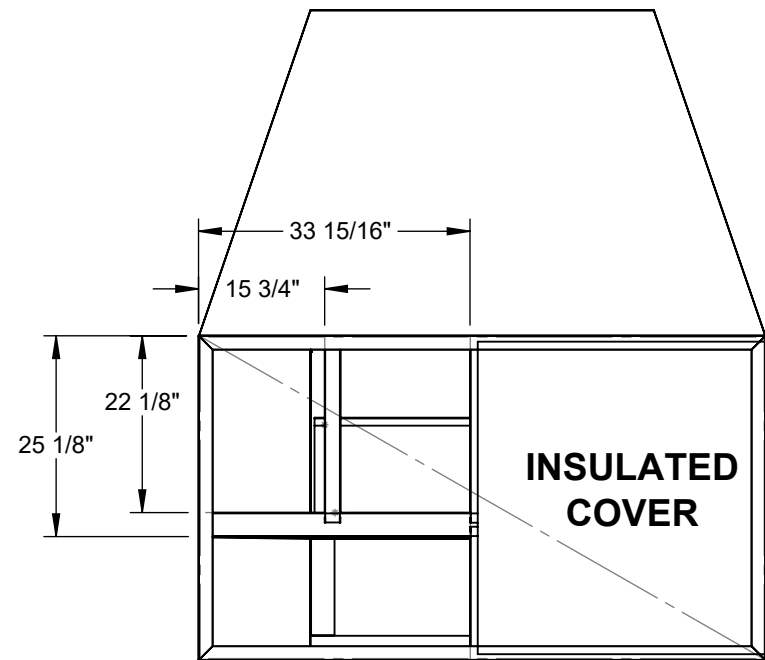
DIMENSIONED AND TOLERENCED PER ANSI Y14.5M-1982

| REVISIONS | | | | |
|-----------|------|----------------------|-----------|----------|
| REV. | ECO# | DESCRIPTION | DATE | APPROVED |
| 1 | | INITIAL DRAWING | 6/23/2006 | OO |
| 2 | | CHANGED TO HEM STYLE | 6/28/21 | SRP |

Attn: _____

Tag: _____

Approval: _____



CURB SHOWN IS CDI STANDARD CONFIGURATION CDI RESERVES THE RIGHT TO CHANGE LAYOUT WITHOUT NOTIFICATION. IF CURB IS NEEDED IN A DIFFERENT CONFIGURATION CDI MUST BE NOTIFIED PRIOR TO PLACING AN ORDER.

OPERATIONAL HEIGHT OF CDI ADAPTER IS 3" LESS THAN OVERALL CURB HEIGHT SHOWN.

| | | | | |
|---|---|--|---|------------------------|
| THIS DRAWING & THE INFORMATION CONTAINED THEREIN IS THE CONFIDENTIAL, PROPRIETARY INFORMATION OF CRYSTAL DISTRIBUTION INC., & MAY NOT BE USED OR REPRODUCED WITHOUT THE APPROVAL OF CRYSTAL DISTRIBUTION, INC. ALL RIGHTS RESERVED. | APPROVALS DRAWN: spickar CHECKED: _____ DIMENSIONS ARE AS FOLLOWS: 1.00 in [25.40 mm] | DATE 6/28/2021 | TITLE/FILE NAME: 1-2060-4000 | |
| | *VERIFY EXISTING CURB OD *VERIFY SUPPLY AND RETURN OPENINGS *NOTE ANY CHANGES *CALL WITH ANY QUESTIONS *FAX BACK IF DRAWING IS OK AS IS | Contact us @ www.cdicurbs.com or 1-888-234-7001 | APPROXIMATE CURB WEIGHT (LBS.) 124.79 | ECO #: _____ |
| | | SCALE: 1:24 | SHEET: 1 OF 11 | |