

Report By:

National TAB
1329 E. KEMPER ROAD
SUITE 4210
CINCINNATI, OH 45246



Report: INITIAL REPORT
Function: Test, Adjust, & Balance
Date: 02/24/2026
Completed By: National TAB

PROJECT
02-23-26 PILOT TRAVEL CENTER FINDLAY,
OH

11471 STATE ROUTE 613W

FINDLAY, OH

Client

Accurex
PO Box 410
Schofield, WI 54476

National TAB

Project: 02-23-26 PILOT TRAVEL CENTER FINDLAY, OH

Table Of Contents

Section	Page #
Summary	3
Checklist	4
FAN - Exhaust	12
FAN - Supply	14
Kitchen Hood Type I	15
HOOD PLAN	17



National TAB

Project: 02-23-26 PILOT TRAVEL CENTER FINDLAY, OH
Function: Test, Adjust, & Balance

Project Summary

Project Summary

The summary below provides a quick understanding of our scope of work and general testing procedures. Enclosed in the report is further detail about your building performance including recommendations, asset data, and pictures. Our focus is to work with the trades to remedy any issues or deficiencies during the actual field balancing and not after the balancing has occurred to achieve a positive environment and outcome. The level of success is determined by the availability of the trades, possible parts needed, or time constraints.

Kitchen Exhaust Hood & Associated Fans

Each kitchen exhaust fan was measured at the hood filter bay utilizing a velocity matrix and a manufacturer's correction factor. Each filter velocity is multiplied by the manufacturer's corrected area. The sum of these readings equals the total flow of the exhaust fans. The total flow of the exhaust was then adjusted to within tolerance of the design flow. Any EF's that fell outside of this tolerance is noted throughout the report.

MUA (Make Up Air Unit) w/ PSP

Total flow for the MAU (Make-up Air Unit) unit was measured by readings taken at the discharge of the hood's perforated supply plenum. Readings taken with a velocity matrix were averaged and multiplied by a manufacturer's corrected area. Adjustments to the fan speed were made to bring the unit to within design tolerance. Any MUA's that fell outside of this tolerance is noted throughout the report

CheckList List

- PILOT MAU FUNCTIONAL TESTING
- PILOT MAU PHYSICAL CONDITION
- PILOT MAU UNIT CONTROLS



02-23-26 PILOT TRAVEL CENTER FINDLAY, OH

CheckList Information

Name : PILOT MAU FUNCTIONAL TESTING **Status :** Completed

Assigned Organization : National TAB **Asset :**

Requesting Organization : National TAB

Created Date : 02/24/2026 - Natasha Low - National TAB

Completed Date : 02/26/2026 - Noah Stafford - National TAB

CheckList Item Details

Functional Testing:

Fan:

Fan wheel rotates the correct direction? Pass

Comment:

Airflow is at design airflow at max speed:

Comment:

2674cfm / 2664cfm

Direct Gas Heater commisioning:

Verify fan rotation & OA damper is full open. Record burner airflow pressure drop at max fan speed. Target PD Range:0.5"-0.8"

Comment:

0.75"

Measure Burner pressure differential at min fan speed: Target is 0.5"-0.8"

Comment:

0.75"

Verify Factory safety settings: High Limit (HLC1): 160F, High gas pressure sw: 8"Wg, Low gas pressure sw: 3"Wg Pass

Comment:

Verify Gas ratings match unit labels: Gas type- Natural, Max gas pressure:0.5psi, Min for Max: 7"Wg, Temp rise: 68Deg Pass

Comment:

Verify Ignition Type: Baso 24v Pass

Comment:

Verify Gas pressure coming into the unit does not exceed 0.5psi Pass

Comment:

0.212psi

Burner should now be activated, adjust high fire limit so the design temperature rise is achieved. Pass

Comment:

Burner is now be in low fire, Adjust low fire limit so blue ribbon flame is achieved across the burner Pass

Comment:

Heater startup is now complete Pass

Comment:

Cooling

Condenser Fan spins freely? Pass

Comment:

Coils are free of damage? Pass

Comment:

Activate cooling. Condenser Fan rotates correctly? Pass

Comment:

Compressor is operating and does not make any abnormal noises? Pass

Comment:

Compressor is operating below FLA? Record values:

Comment:

8.3A/18.6A

Ambient Temperature and Recorded Discharge pressure during cooling:

Comment:

Ambient temperature: 36F Discharge: 38F Too cold to effectively test.



02-23-26 PILOT TRAVEL CENTER FINDLAY, OH

CheckList Information

Name : PILOT MAU PHYSICAL CONDITION **Status :** Completed

Assigned Organization : National TAB **Asset :**

Requesting Organization : National TAB

Created Date : 02/24/2026 - Natasha Louw - National TAB

Completed Date : 02/25/2026 - Noah Stafford - National TAB

CheckList Item Details

UNIT WALK AROUND:

Unit is free of damage?	Pass
-------------------------	------

Comment:

Doors are not obstructed and are free of damage?	Pass
--	------

Comment:

Open all compartments, Ensure there are no items loose items sitting inside the unit.	Pass
---	------

Comment:

Condenser coil is free of damage, fins are straight?	Pass
--	------

Comment:

Evap coil us free from damage, fins are straight?	Pass
---	------

Comment:

Open motor/fan compartment. No loose items and motor wheel spins freely?	Pass
--	------

Comment:

With voltage off check that all wiring connections are tight.	Pass
---	------

Comment:

Condensate drain installed?

Pass

Comment:

Gas line connected with Grommet installed?

Pass

Comment:

All OA Intake filters installed and free of damage?

Pass

Comment:



02-23-26 PILOT TRAVEL CENTER FINDLAY, OH

CheckList Information

Name : PILOT MAU UNIT CONTROLS **Status :** Completed

Assigned Organization : National TAB **Asset :**

Requesting Organization : National TAB

Created Date : 02/24/2026 - Natasha Louw - National TAB

Completed Date : 02/26/2026 - Noah Stafford - National TAB

CheckList Item Details

UNIT CONTROLS:

Check incoming Line voltage is correct. Pass

Comment:

Low voltage wiring is Shielded twisted pair? Pass

Comment:

Low voltage connections made at R and G in mua to the Hood control panel (SF01/SFC1)? Pass

Comment:

Low voltage connections made at terminals 46 and 47 in mua to the hood control panel (P1A+/P1B-)? Pass

Comment:

Does the Building have a fire alarm system? If so no Jumper installed between Terminals 75/76. Terminals 71/72/73 are for option leak alarm Pass

Comment:

Confirmed Jumper at W1/Y1 if applicable? N/A

Comment:

National TAB

Project: 02-23-26 PILOT TRAVEL CENTER FINDLAY, OH

System/Unit: FAN - Exhaust



Asset: EF1

AREA:KITCHEN HD

Unit Data		
	Design	Actual
MFG	CAPTIVE-AIRE	CAPTIVE-AIRE
Model Num	DU180HFA	DU180HFA
Serial Num	-	7182857
Type	UPBLAST	UPBLAST
Configuration	VERTICAL	VERTICAL

Test Data		
	Design	Actual
CFM	2960	2870
Fan Rotation	-	CORRECT
System SetPt	-	41.1Hz
Total ESP	1.218"	0.25"
Fan Inlet SP	-	-0.25"
Fan Discharge SP	-	ATM

Motor Data		
	Design	Actual
Motor MFG	-	NEMA
Frame	-	182T
Horsepower	3.0	3.0
Motor Rpm	-	1755
Phase	3	3
Voltage (rated)	208	230
Amperage (rated)	-	8.6
Service Factor	-	1.15

Completed By: Noah Stafford on 02/26/2026

National TAB

Project: 02-23-26 PILOT TRAVEL CENTER FINDLAY, OH

System/Unit: FAN - Exhaust



Asset: EF2

AREA:KITCHEN HD

Unit Data		
	Design	Actual
MFG	CAPTIVE-AIRE	CAPTIVE-AIRE
Model Num	DU85HFA	DU85HFA
Serial Num	-	7182857
Type	UPBLAST	UPBLAST
Configuration	VERTICAL	VERTICAL

Motor Data		
	Design	Actual
Motor MFG	-	HSSA
Horsepower	0.750	0.750
Motor Rpm	-	1725
Phase	3	3
Voltage (rated)	208	208
Amperage (rated)	-	2.6
Service Factor	-	1.15

Test Data		
	Design	Actual
CFM	1050	1108
Fan RPM	1162	
Fan Rotation	-	CORRECT
System SetPt	-	35.7Hz
Total ESP	0.982"	0.34"
Fan Inlet SP	-	-0.34"

National TAB

Project: 02-23-26 PILOT TRAVEL CENTER FINDLAY, OH

System/Unit: FAN - Supply



Asset: MAU1

AREA:

Unit Data		
	Design	Actual
MFG	UNKNOWN	ACCUREX
Model Num	UNKNOWN	XD6X-P116-H12-D1-5
Serial Num	-	27169001
Type	-	MUA
Configuration	-	VERTICAL

Test Data		
	Design	Actual
CFM	2664	2674
SF System SetPt	-	77%
RL Voltage	-	208/208/209V
RL Amperage	-	2.5/2.2/2.4A
Total ESP	-	0.10"
Fan Discharge SP	-	0.10"

Motor Data		
	Design	Actual
Motor MFG	-	ACCUREX
Horsepower	-	1.5
Phase	-	3
Voltage (rated)	-	208
Amperage (rated)	-	4.6

General	
	Actual
Fan Rotation Correct	YES

Gas Heat		
	Design	Actual
Heater Operates (y/n)	-	Y
Flame Status (pass/fail)	-	PASS
Inlet Air Temp SetPt	-	72
Discharge Air Temp SetPt	-	72F
Air Flow Switch SP Actual	-	0.75"

Completed By: Noah Stafford on 02/26/2026

National TAB

Project: 02-23-26 PILOT TRAVEL CENTER FINDLAY, OH

System/Unit: Kitchen Hood Type I



Asset: HD1

AREA:

Unit Data		
	Design	Actual
MFG	UNKNOWN	CAPTIVE-AIRE
Model Num	UNKNOWN	5424 ND-2
Job / Serial Num	-	7182857
Type	-	TYPE I ISLAND
Hood length	-	54"
Hood Width	-	192"
Supply Plenum Type	-	PSP
Supply Plenum Width	-	206"
Supply Plenum Length	-	14"

Test Data Exhaust		
	Design	Actual
Filter Type	-	TYPE 1 BAFFLE
Filter Size 1	-	16X20"
Filter Qty 1	-	12
Filter AK factor size 1	-	2.08
Filter Total AK Area	-	24.96
Filter1 FPM	-	87
Filter2 FPM	-	169
Filter3 FPM	-	97
Filter4 FPM	-	119
Filter5 FPM	-	128
Filter6 FPM	-	154
Filter7 FPM	-	131
Filter8 FPM	-	123
Filter9 FPM	-	105
Filter10 FPM	-	95
Filter11 FPM	-	89
Filter12 FPM	-	84
Filter Ave FPM(corr)	-	115
CFM	-	2870

Cooking Equipment	
	Actual
Item 1	FRYER
Item 2	OVEN
Item 3	OVEN
Item 4	
Item 5	PIZZA OVEN

Test Data Supply		
	Design	Actual
Total Area	-	20.03
Kv factor (Vel)	-	0.89
Num of Readings	-	16
Reading1 FPM	-	174
Reading2 FPM	-	166
Reading3 FPM	-	150
Reading4 FPM	-	139
Reading5 FPM	-	170
Reading6 FPM	-	145
Reading7 FPM	-	146
Reading8 FPM	-	161
Reading9 FPM	-	141
Reading10 FPM	-	151
Reading11 FPM	-	126
Reading12 FPM	-	139
Reading13 FPM	-	166
Reading14 FPM	-	127
Ave FPM(corr)	-	150
CFM	-	2674

Completed By: Noah Stafford on 02/25/2026

National TAB

Project: 02-23-26 PILOT TRAVEL CENTER FINDLAY, OH

System/Unit: Kitchen Hood Type I



Asset: HD2

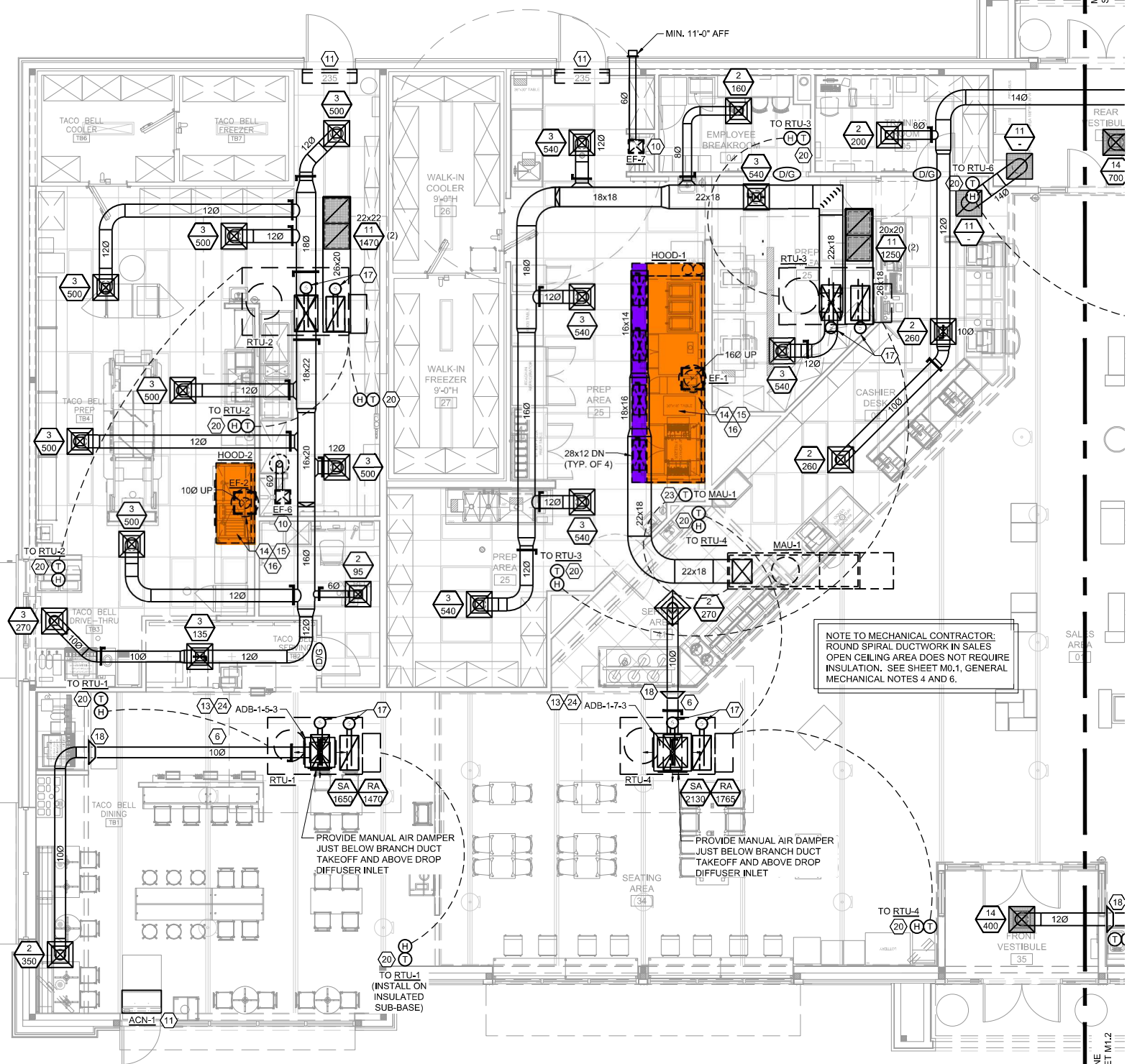
AREA:

Unit Data		
	Design	Actual
MFG	UNKNOWN	CAPTIVE-AIRE
Model Num	UNKNOWN	3650 BD-2
Job / Serial Num	-	7182857
Type	-	TYPE I LOW PROX
Hood length	-	34"
Hood Width	-	75"

Test Data Exhaust		
	Design	Actual
Filter Type	-	TYPE 1 BAFFLE
Filter Size 1	-	16X16"
Filter Qty 1	-	4
Filter AK factor size 1	-	1.62
Filter Total AK Area	-	6.48
Filter1 FPM	-	165
Filter2 FPM	-	175
Filter3 FPM	-	175
Filter4 FPM	-	169
Filter Ave FPM(corr)	-	171
CFM	-	1108

Cooking Equipment	
	Actual
Item 1	STEAMER
Item 2	FRYER

Completed By: Noah Stafford on 02/25/2026



NOTE TO MECHANICAL CONTRACTOR:
 ROUND SPIRAL DUCTWORK IN SALES
 OPEN CEILING AREA DOES NOT REQUIRE
 INSULATION. SEE SHEET M0.1. GENERAL
 MECHANICAL NOTES 4 AND 6.

PROVIDE MANUAL AIR DAMPER
 JUST BELOW BRANCH DUCT
 TAKEOFF AND ABOVE DROP
 DIFFUSER INLET

PROVIDE MANUAL AIR DAMPER
 JUST BELOW BRANCH DUCT
 TAKEOFF AND ABOVE DROP
 DIFFUSER INLET

TO RTU-1
 (INSTALL ON
 INSULATED
 SUB-BASE)

2 TRAVEL CENTER FLOOR PLAN - HVAC NEW LAYOUT
 M1.1 SCALE: 3/16" = 1'-0"