

MINIMUM SPACE VENTILATION REQUIREMENTS (2021 INTERNATIONAL MECHANICAL CODE)																			
UNIT MARK	ROOM TYPE	VENTILATION TABLE OCCUPANCY CLASS	AREA SQ. FT.	PERSONS/1000 SQ. FT.	ACTUAL # PERSONS	OA CFM/PERSON	OA CFM/SQ. FT.	EXHST CFM/SQ. FT.	EXHST CFM/WC/UR	EXHST CFM/SHWR HD	NUMBER WC/UR	NUMBER SHWR HD	EXHAUST CFM	TRANSFER AIR CFM	VENT EFFECT	OA CFM	SUPPLY CFM	ACTUAL OA CFM	
RTU-1	TB1 - TACO BELL DINING	FOOD / DINING ROOMS	774	70	42	7.5	0.18								0.8	568	2,000	530	
TOTALS																	568	2,000	530
RTU-2	TB2 - TACO BELL SERVING	RETAIL / SALES	74	15	2	7.5	0.12								0.8	30	135	36	
	TB3 - TACO BELL DRIVE-THRU	RETAIL / SALES	83	15	1	7.5	0.12								0.8	22	270	72	
	TB4 - TACO BELL PREP	FOOD / KITCHENS	841	20	6	7.5	0.12	0.70						590	0.8	182	3,500	928	
	TB8 - TACO BELL OFFICE	OFFICE / OFFICE SPACE	94	5	1	5.0	0.06								0.8	13	95	25	
TOTALS																	247	4,000	1,060
RTU-3	25 - PREP AREA	FOOD / KITCHENS	921	20	10	7.5	0.12	0.70						645	0.8	232	3,240	859	
	40 - EMPLOYEE BREAKROOM	OFFICE / CONFERENCE	86	50	3	5.0	0.06								0.8	25	160	42	
TOTALS																	257	3,400	900
RTU-4	01.1 - LOWER LEFT SALES	RETAIL / SALES	248	15	4	7.5	0.12								0.8	75	285	76	
	34 - SEATING AREA	FOOD / DINING ROOMS	730	70	32	7.5	0.18								0.8	464	1,845	489	
	41 - SERVING AREA	RETAIL / SALES	168	15	2	7.5	0.12								0.8	44	270	72	
TOTALS																	840	2,400	635
RTU-5	01.2 - LOWER RIGHT SALES	RETAIL / SALES	1,244	15	19	7.5	0.12								0.8	365	2,000	530	
	35 - FRONT VESTIBULE	PUBLIC SPACES / CORRIDORS	101				0.06								0.8	8	400	106	
TOTALS																	372	2,400	635
RTU-6	01 - UPPER SALES	RETAIL / SALES	1,569	15	24	7.5	0.12								0.8	460	1,980	525	
	02 - CASHIER DESK	RETAIL / SALES	344	15	5	7.5	0.12								0.8	98	520	138	
	05 - TRAINING ROOM	OFFICE / OFFICE SPACE	101	5	1	5.0	0.06								0.8	14	200	53	
	36 - REAR VESTIBULE	PUBLIC SPACES / CORRIDORS	134				0.06								0.8	10	700	186	
TOTALS																	955	3,400	900
RTU-7	06 - SHOWER HALL	PUBLIC SPACES / CORRIDORS	394				0.06								0.8	30	450	119	
	07 - PUBLIC LAUNDRY	COIN OPERATED LAUNDRY	105	20	2	7.5	0.12								0.8	35	300	80	
	08 - SHOWER #1	TOILET ROOMS - PUBLIC	108					70	50	1	1	120	20		---	---	100	27	
	09 - SHOWER #2	TOILET ROOMS - PUBLIC	108					70	50	1	1	120	20		---	---	100	27	
	10 - SHOWER #3	TOILET ROOMS - PUBLIC	108					70	50	1	1	120	20		---	---	100	27	
	11 - SHOWER #4	TOILET ROOMS - PUBLIC	108					70	50	1	1	120	20		---	---	100	27	
	12 - SHOWER #5	TOILET ROOMS - PUBLIC	108					70	50	1	1	120	20		---	---	100	27	
	13 - SHOWER #6	TOILET ROOMS - PUBLIC	108					70	50	1	1	120	20		---	---	100	27	
	17 - STORE LAUNDRY	COMMERCIAL LAUNDRY	187	10	1	5.0	0.12								0.8	34	500	133	
	18 - STAGING AREA	RETAIL STORES / STORAGE ROOMS	121				0.12								0.8	18	150	40	
	20 - STOCK ROOM	RETAIL STORES / STORAGE ROOMS	78				0.12								0.8	12	120	32	
	21 - TOILET HALL	PUBLIC SPACES / CORRIDORS	96				0.06								0.8	7	90	24	
	22 - WOMENS TOILET	TOILET ROOMS - PUBLIC	278					70	50	3			210	10	---	---	200	53	
	23 - MENS TOILET	TOILET ROOMS - PUBLIC	434					70	50	11			770	120	---	---	650	172	
	29 - WATER ENTRY	RETAIL STORES / STORAGE ROOMS	239				0.12								0.8	36	310	82	
	33 - SERVICE ACCESS	RETAIL STORES / STORAGE ROOMS	91				0.12								0.8	14	90	24	
	44 - RECEIVING ROOM	RETAIL STORES / RECEIVING	416	2	2	10.0	0.12								0.8	87	540	143	
TOTALS																	272	4,000	1,060

AIR CURTAIN (ENVIRONMENTAL AND FLY FAN) SCHEDULE

MARK	MANUFACTURER	MODEL NO.	MODEL TYPE	LOCATION	MAXIMUM MOUNTING HEIGHT	MAXIMUM VELOCITY (F.P.M.)	AIR VOLUME (C.F.M.)	NOZZLE WIDTH	ELECTRICAL DATA										WEIGHT	NOTES		
									NUMBER MOTORS	NUMBER CIRCUITS	MOTOR H.P.	MOTOR M.C.A.	MOTOR M.O.C.P.	MOTOR VOLTS	MOTOR PHASE	HEAT KW	HEAT M.C.A.	HEAT M.O.C.P.			HEAT VOLTS	HEAT PHASE
ACN-1	BERNER INTERNATIONAL	A110-E-1036EX-060-AC-SS	EXPOSED	VESTIBULE	10'-0" A.F.F.	3,552	1,353	36.0"	1	1	1/2	4.3	---	208	3	6	21.0	30	208	3	88	1,2,3,5
ACN-9	BERNER INTERNATIONAL	IDC12-2072EZ-F-SS	EXPOSED	ROLLUP DOOR	10'-0" A.F.F.	5,166	3,024	72.0"	2	1	(2) 1/2	1.4	---	480	1	12	17.2	25	480	3	190	1,3,5,6,7

- NOTES:
- MAXIMUM MOUNTING HEIGHT IS UNIT NOZZLE DISCHARGE HEIGHT ABOVE FINISH FLOOR.
 - FURNISH WITH DIGITAL CONTROLLER AND REMOTE WALL MOUNTED CONTROL PANEL (WHEN REQUIRED), MAGNETIC READ DOOR SWITCH (PROVIDE 1-SWITCH FOR SINGLE DOOR AND 2-SWITCHES FOR DOUBLE DOOR) AND LOCKABLE FACTORY MOUNTED DISCONNECT SWITCH.
 - STAINLESS STEEL CABINET FINISH.
 - SUPPORT AND HANG AIR CURTAIN FROM ROOF JOIST WITH UNISTRUT AND ALL THREADED RODS (PROVIDED BY THE MECHANICAL CONTRACTOR).
 - SUPPORT AIR CURTAIN UTILIZING WALL MOUNTING PLATES.
 - MOTOR AMPS ARE INCLUDED IN HEAT M.C.A.
 - FURNISH WITH DOOR SWITCH (ROLLUP DOOR).

KITCHEN GREASE DUCT NOTE

UL LISTED CAPTIVEAIRE GREASE DUCT SHALL BE FURNISHED (BY OWNER) AND INSTALLED BY THE MECHANICAL CONTRACTOR. EXCEPTION IF PERMITTED ONLY BY PILOT: TYPE I KITCHEN GREASE DUCT SHALL BE WRAPPED WITH 3M FIRE BARRIER DUCT WRAP #15+ FIRE PROTECTION SYSTEM UTILIZING A DOUBLE WRAP. INSTALL PER MANUFACTURER'S INSTRUCTIONS FOR ZERO CLEARANCE INSTALLATION. GREASE DUCTS SHALL BE CONSTRUCTED OF 18 GA. BLACK STEEL WITH WELDED SEAMS AND JOINTS OR FACTORY MANUFACTURED SEAMS AND JOINTS.

H.V.A.C. PACKAGE - NATIONAL ACCOUNT

OWNER PARTICIPATES IN A NATIONAL ACCOUNTS PROGRAM THAT SHALL FURNISH AIR DISTRIBUTION DEVICES, LOUVERS, UNIT HEATERS, FANS AND ASSOCIATED ROOF CURBS. MATERIAL PACKAGE EQUIPMENT SHALL BE FURNISHED BY THE OWNER AND INSTALLED BY THE MECHANICAL CONTRACTOR. CONTACT OWNER'S FIELD REPRESENTATIVE FOR ADDITIONAL H.V.A.C. MATERIAL PACKAGE INFORMATION. NO OTHER MANUFACTURERS SHALL BE ALLOWED OR ACCEPTED.

H.V.A.C. / MATERIAL PACKAGE

OWNER PARTICIPATES IN A NATIONAL ACCOUNTS PROGRAM WHERE THE SAME MANUFACTURER FURNISHES ALL ROOFTOP UNITS AND ASSOCIATED ROOF CURBS, DUCTLESS MINI-SPLIT SYSTEM UNITS AND/OR SPLIT SYSTEM UNITS. MATERIAL PACKAGE SHALL BE FURNISHED BY THE OWNER AND INSTALLED BY THE MECHANICAL CONTRACTOR. CONTACT OWNER'S FIELD REPRESENTATIVE FOR ADDITIONAL INFORMATION. NO OTHER MANUFACTURERS SHALL BE PERMITTED.

DUCT CONSTRUCTION NOTE

THE MECHANICAL CONTRACTOR IS REQUIRED TO PROVIDE AND COVER ALL RETURN AIR DUCT OPENINGS WITH 1" POLY TYPE MEDIA DURING CONSTRUCTION AND PRIOR TO ROOFTOP UNITS BEING ACTIVATED FOR THE FIRST TIME TO PREVENT DIRT AND DUST FROM BEING DRAWN INTO THE DUCTWORK AND UNITS. FAILURE TO DO SO SHALL RESULT IN THE MECHANICAL CONTRACTOR HAVING THE SYSTEM AND DUCTWORK CLEANED AT THEIR EXPENSE. PRIOR TO TURNOVER TO THE OWNER, THE MECHANICAL CONTRACTOR SHALL REPLACE ALL FILTERS IN THE SYSTEM WITH NEW CLEAN FILTERS. NO FIBERGLASS MEDIA ALLOWED.

SHEET INDEX

SHEETS	DESCRIPTIONS
M0.1	MECHANICAL EQUIPMENT SCHEDULES, NOTES AND LEGEND
M0.2	MECHANICAL EQUIPMENT SCHEDULES
M1.1	MECHANICAL PLAN HVAC NEW LAYOUT
M1.2	MECHANICAL PLAN HVAC NEW LAYOUT
M2.1	MECHANICAL DETAILS
M3.1	CAPTIVEAIRE EQUIPMENT - ELECTRICAL WEIGHT AND DIMENSIONAL SCHEDULE
M3.2	CAPTIVEAIRE EQUIPMENT - HOOD DRAWINGS AND SCHEDULES
M3.5	CAPTIVEAIRE EQUIPMENT - HOOD-2 FIRE SUPPRESSION DRAWINGS AND NOTES
M3.3	CAPTIVEAIRE EQUIPMENT - BACKSPLASH AND HOOD SUPPORT DRAWINGS
M3.4	CAPTIVEAIRE EQUIPMENT - HOOD DRAWINGS AND DETAILS
M3.7	CAPTIVEAIRE EQUIPMENT - EXHAUST FAN DRAWINGS, SCHEDULES, AND DETAILS
M3.6	CAPTIVEAIRE EQUIPMENT - MAU AND EF WIRING OVERVIEW
M3.8	CAPTIVEAIRE EQUIPMENT - HOOD AND EXHAUST FAN WIRING OVERVIEW
M3.9	CAPTIVEAIRE EQUIPMENT - WIRING FOR ELECTRICAL CONTROL PACKAGE
M3.10	CAPTIVEAIRE EQUIPMENT - FIRE SUPPRESSION WIRING DIAGRAMS
M3.11	CAPTIVEAIRE EQUIPMENT - HOOD-2 FIRE SUPPRESSION CONTROL PANEL DETAILS
M3.12	CAPTIVEAIRE EQUIPMENT - TANK PROTECTION LOW VOLTAGE DETAILS
M3.13	CAPTIVEAIRE - FACTORY WIRING SCHEMATIC CORE FIRE SUPPRESSION
M3.14	CAPTIVEAIRE EQUIPMENT - HOOD-1 DUCTWORK DETAILS AND DRAWINGS
M3.15	CAPTIVEAIRE EQUIPMENT - HOOD-2 DUCTWORK DETAILS AND DRAWINGS
M4.1	CAPTIVEAIRE EQUIPMENT - ELECTRICAL WEIGHT AND DIMENSIONAL SCHEDULE

AIR BALANCE SCHEDULE

EXHAUST		OUTSIDE AIR	
MARK	CFM	MARK	CFM
EF-1	2,960	RTU-1	530
EF-2	1,050	RTU-2	1,060
EF-3	720	RTU-3	900
EF-4	980	RTU-4	635
EF-5	N/A	RTU-5	635
EF-6	50	RTU-6	900
EF-7	50	RTU-7	1,060
EF-8	50	MUA-1	2,664
EF-9	N/A		
* DRYERS	2,080		
TOTAL	7,940	TOTAL	8,384
NET AIR FLOW	444	CFM (POSITIVE)	

This item has been signed and sealed by Ryan J. Crawford PE using a Digital Signature and date. Printed copies of this document are not considered signed and sealed and the signature must be verified on any electronic copies.

DRYER VENT INFORMATION

DRYER VENT TERMINATION CAP SHALL BE FURNISHED BY THE OWNER AND INSTALLED BY THE MECHANICAL CONTRACTOR. SEE DETAIL SHEET M2.1. NO OTHER MANUFACTURERS SHALL BE ALLOWED OR ACCEPTED. DRYER VENT DUCTWORK SHALL BE MINIMUM 24 GAUGE ALUMINUM FLEXIBLE DRYER DUCT SHALL NOT BE PERMITTED. SHEET METAL SCREWS OR OTHER FASTENERS THAT WILL OBSTRUCT THE AIRFLOW SHALL NOT BE PERMITTED. ALL DUCTS AND DUCT CONNECTIONS SHALL BE SEALED WITH EITHER TAPES OR MASTIC FOR USE WITH METALLIC DUCTS AND SHALL COMPLY WITH UL 181B (181 B-FX FOR PRESSURE SENSITIVE TAPE OR UL 181B-MF FOR MASTIC). ALSO REFER TO DRYER MANUFACTURER'S WRITTEN INSTALLATION INSTRUCTIONS IN WHICH THE MORE STRINGENT OF THESE REQUIREMENTS SHALL PREVAIL. ALSO SEE DRYER VENT AND PIPE PENETRATION DETAILS ON SHEET M2.1. COORDINATE WITH THE OWNER'S CONSTRUCTION MANAGER.

DUCT CONSTRUCTION AND INSTALLATION NOTE

THE MECHANICAL CONTRACTOR SHALL TAKE ALL EXTREME MEASURES TO ENSURE THAT ALL EXPOSED SPIRAL DUCTWORK IS INSTALLED AND FABRICATED IN A TOTALLY NEAT AND WORKMAN LIKE ORDER AND FINISHED CONDITION IN ACCORDANCE WITH THE CURRENT SMACNA DUCT INSTALLATION AND CONSTRUCTION MANUALS. FAILURE TO DO SO SHALL RESULT IN THE MECHANICAL CONTRACTOR HAVING TO REPLACE THE EXPOSED DISTRIBUTION SYSTEM TO THE APPROVAL OF THE OWNER AT THE MECHANICAL CONTRACTOR'S EXPENSE.

DUCT CONSTRUCTION NOTE

THE MECHANICAL CONTRACTOR IS REQUIRED TO PROVIDE AND COVER ALL RETURN AIR DUCT OPENINGS WITH 1" POLY TYPE MEDIA DURING CONSTRUCTION AND PRIOR TO ROOFTOP UNITS BEING ACTIVATED FOR THE FIRST TIME TO PREVENT DIRT AND DUST FROM BEING DRAWN INTO THE DUCTWORK AND UNITS. FAILURE TO DO SO SHALL RESULT IN THE MECHANICAL CONTRACTOR HAVING THE SYSTEM AND DUCTWORK CLEANED AT THEIR EXPENSE. PRIOR TO TURNOVER TO THE OWNER, THE MECHANICAL CONTRACTOR SHALL REPLACE ALL FILTERS IN THE SYSTEM WITH NEW CLEAN FILTERS. NO FIBERGLASS MEDIA ALLOWED.

ABBREVIATIONS

ABB.	DEFINITION
AC	AIR CONDITIONING
AFF	ABOVE FINISHED FLOOR
CFM	CUBIC FEET PER MINUTE
CU	CONDENSING UNIT
DIA Ø	DIAMETER
DEG	DEGREE
EF	EXHAUST FAN
ESP	EXTERNAL STATIC PRESSURE
ETR	EXISTING TO REMAIN
EX	EXISTING
EXHST	EXHAUST
FL	FLEXIBLE DUCT TAKEOFF
HP	HORSEPOWER
HVAC	HEATING, VENTING AND AIR COND.
LBS	POUNDS
MAX	MAXIMUM
MCA	MINIMUM CIRCUIT AMPS
MBH	1000 BTU PER HOUR
MC	MECHANICAL CONTRACTOR
MIN	MINIMUM
MOCP	MAX OVERCURRENT PROTECTION
N/A	NOT APPLICABLE
NTS	NOT TO SCALE
OA	OUTSIDE AIR
RTU	ROOFTOP UNIT
SA	SUPPLY AIR
SQ FT	SQUARE FOOT
TYP	TYPICAL
VAV	VARIABLE AIR VOLUME
W/	WITH
W/O	WITHOUT

MECHANICAL SYMBOL LEGEND

		SUPPLY DIFFUSER (NEW AND EXISTING)
		RETURN GRILLE / REGISTER (NEW AND EXISTING)
		EXHAUST GRILLE / REGISTER (NEW AND EXISTING)
		DIFFUSER, GRILLE OR REGISTER TAG / CFM / (QUANTITY) / -EQUIPMENT ASSOCIATION-
		TEMPERATURE SENSOR / HUMIDITY SENSOR / CARBON DIOXIDE SENSOR
		MANUAL / MOTORIZED / BACKDRAFT DAMPER
		RECTANGULAR (OR ROUND) TRANSITION / RECTANGULAR-TO-ROUND TRANSITION
		FIRE DAMPER SMOKE DAMPER
		18x18 DOOR GRILLE / 3/4-INCH DOOR UNDERCUT (BY G.C.)
		NEW SUPPLY / RETURN / EXHAUST / TRANSFER DUCTWORK
		EXISTING DUCTWORK EXISTING DUCTWORK FOR REMOVAL
		POINT OF CONNECTION (NEW TO EXISTING) / POINT OF DISCONNECTION
		ROUND, RECTANGULAR, & EXISTING DUCTWORK SIZES (INCHES, FIRST NUMBER IS DIMENSION SHOWN)

GENERAL MECHANICAL NOTES

- THE DRAWINGS ARE GENERALLY DIAGRAMMATIC AND INDICATE THE APPROXIMATE ROUTING OF PIPING AND DUCTWORK. THE MECHANICAL CONTRACTOR SHALL COORDINATE HIS WORK WITH ALL OTHER TRADES. MINOR OFFSETS AND ADJUSTMENTS SHALL BE PROVIDED WHERE REQUIRED AT NO ADDITIONAL COST TO THE OWNER.
- COORDINATE CEILING DIFFUSER AND REGISTER LOCATIONS WITH ARCHITECTS REFLECTED CEILING PLAN.
- DUCT SIZES INDICATED ON THE DRAWINGS ARE CLEAR INSIDE DIMENSIONS.
- ALL DUCTWORK SHALL BE FABRICATED (GALVANIZED G90) AND INSTALLED IN ACCORDANCE WITH SMACNA STANDARDS. MITERED ELBOWS SHALL BE PROVIDED WITH DOUBLE THICKNESS TURNING VANES. PROVIDE SINGLE WALL SPIRAL ROUND DUCT IN ALL EXPOSED SALES AREAS (PAINT GRIP READY). REFER TO MECHANICAL SPECIFICATION SECTION 233113 - METAL DUCTS.
- ALL MECHANICAL EQUIPMENT SHALL BE LISTED, LABELED AND INSTALLED IN ACCORDANCE WITH THE CODE REQUIREMENTS AND MANUFACTURER'S INSTALLATION INSTRUCTIONS.
- SUPPLY, RETURN AND EXHAUST DUCTWORK SHALL BE INSULATED PER SPECIFICATION SECTION 230713 DUCT INSULATION (EXCEPTION: SINGLE WALL SPIRAL ROUND DUCT IN ALL EXPOSED SALES AREAS SHALL NOT BE INSULATED).
- MECHANICAL CONTRACTOR SHALL INSTALL DIFFUSERS WITH A MAXIMUM RUN OF 6'-0" INSULATED FLEXIBLE DUCT. FLEXIBLE DUCT SHALL BE J. P. LAMBORN #FHP-258R. SINGLE WIRE HANGERS SHALL NOT BE ALLOWED. DUCTWORK SHALL BE SUPPORTED IN A MANNER THAT PREVENTS CONSTRICTION OR KINKS.
- SEAL ALL SUPPLY, RETURN AND EXHAUST DUCT JOINTS AND SEAMS.
- INTERNALLY LINE FIRST 10'-0" OF BOTH SUPPLY AND RETURN AIR DUCT WITH ACOUSTICAL DUCT LINER AS SPECIFIED IN THE MECHANICAL SPECIFICATIONS. ALL SUPPLY, RETURN, OUTSIDE AIR AND RELIEF AIR DUCTS ABOVE CEILINGS SHALL BE EXTERNALLY INSULATED.
- PROVIDE MANUAL VOLUME DAMPER AT ALL TAKEOFFS. NOT ALL DAMPERS ARE SHOWN ON THE DRAWINGS FOR CLARITY.
- MECHANICAL CONTRACTOR SHALL COORDINATE WITH THE OWNERS REPRESENTATIVE AND THE CONTROLS CONTRACTOR FOR THE WIRING AND PROGRAMMING OF THE CONTROLS SYSTEM. WHERE APPLICABLE, REFERENCE SHEETS ME1 THRU ME6.
- MECHANICAL CONTRACTOR SHALL COORDINATE WITH THE OWN

EXHAUST FAN INFORMATION - JOB#7182857

FAN UNIT NO	TAG	QTY	FAN UNIT MODEL #	MANUFACTURER	CFM	ESP	RPM	MOTOR ENCL	HP	BHP	PHASE	VOLT	FLA	DISCHARGE VELOCITY	WEIGHT (LBS)	SONES
1	EF-1	1	DU180HFA	CAPTIVEAIRE	2960	1.218	1231	ODP, PREMIUM	3.000	1.3040	3	208	9.5	684 FPM	185	18.3
2	EF-2	1	DU85HFA	CAPTIVEAIRE	1050	0.982	1162	ODP	0.750	0.2760	3	208	2.6	332 FPM	96	8.4

FAN OPTIONS

FAN UNIT NO	TAG	QTY	DESCRIPTION
1	EF-1	1	GREASE BOX
		1	FAN BASE CERAMIC SEAL - DU/DR180HFA - INSTALLED AT PLANT - FOR GREASE DUCTS
		1	2 YEAR PARTS WARRANTY
2	EF-2	1	GREASE BOX
		1	FAN BASE CERAMIC SEAL - DU/DR85HFA - INSTALLED AT PLANT - FOR GREASE DUCTS
		1	2 YEAR PARTS WARRANTY

FAN ACCESSORIES

FAN UNIT NO	TAG	EXHAUST				SUPPLY		
		GREASE CUP	GRAVITY DAMPER	WALL MOUNT	SIDE DISCHARGE	GRAVITY DAMPER	MOTORIZED DAMPER	WALL MOUNT
1	EF-1	YES						
2	EF-2	YES						

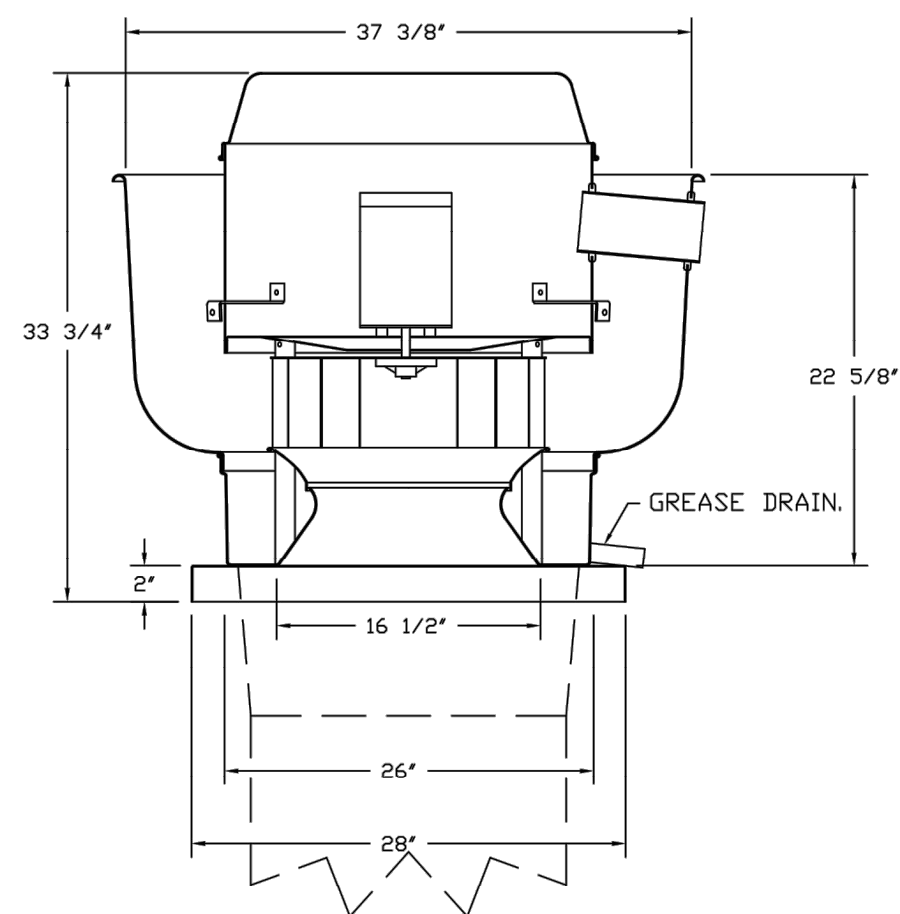
CURB ASSEMBLIES

NO	DN FAN	TAG	WEIGHT	ITEM	SIZE
1	# 1	EF-1	43 LBS	CURB	26.500"W X 26.500"L X 20.000"H VENTED HINGED.
2	# 2	EF-2	36 LBS	CURB	23.000"W X 23.000"L X 20.000"H VENTED HINGED.

COORDINATE FINAL LOCATION OF GREASE RATED EXHAUST FANS AND MAKEUP AIR UNITS IN ACCORDANCE WITH THE REQUIREMENTS OF IMC 2021 SECTION 506.3.13. OUTLETS SHALL TERMINATE NOT LESS THAN 40 INCHES ABOVE ROOF SURFACE, NOT LESS THAN 10 FEET HORIZONTALLY FROM PARTS OF THE SAME OR CONTIGUOUS BUILDINGS, ADJACENT BUILDINGS AND ADJACENT PROPERTY LINES, AND NOT LESS THAN 10 FEET ABOVE THE ADJOINING GRADE LEVEL. OUTLETS SHALL BE LOCATED NOT LESS THAN 10 FEET HORIZONTALLY FROM OR NOT LESS THAN 3 FEET VERTICALLY ABOVE AIR INTAKE OPENINGS INTO ANY BUILDING. EXCEPTION: OUTLETS SHALL TERMINATE NOT LESS THAN 5 FEET HORIZONTALLY FROM PARTS OF THE SAME OR CONTIGUOUS BUILDING, ADJACENT BUILDINGS AND ADJACENT PROPERTY LINES AND AIR INTAKE OPENINGS INTO A BUILDING WHERE AIR FROM THE EXHAUST OUTLET IS DISCHARGED AWAY FROM SUCH LOCATIONS.

EXHAUST AIR VOLUMES FROM THESE SCHEDULES SHALL BE INCLUDED IN BUILDING OUTSIDE AIR BALANCE SCHEDULE AS PER IMC 2021 SECTION 508.1.2

FAN #1 DU180HFA - EXHAUST FAN (EF-1)



TOP VIEW

FEATURES:

- DIRECT DRIVE CONSTRUCTION (NO BELTS/PULLEYS).
- ROOF MOUNTED FANS.
- RESTAURANT MODEL.
- UL705 AND UL762 AND ULC-S645
- VARIABLE SPEED CONTROL.
- INTERNAL WIRING.
- THERMAL OVERLOAD PROTECTION (SINGLE PHASE).
- HIGH HEAT OPERATION 300°F (149°C).
- GREASE CLASSIFICATION TESTING.
- NEMA 3R SAFETY DISCONNECT SWITCH.

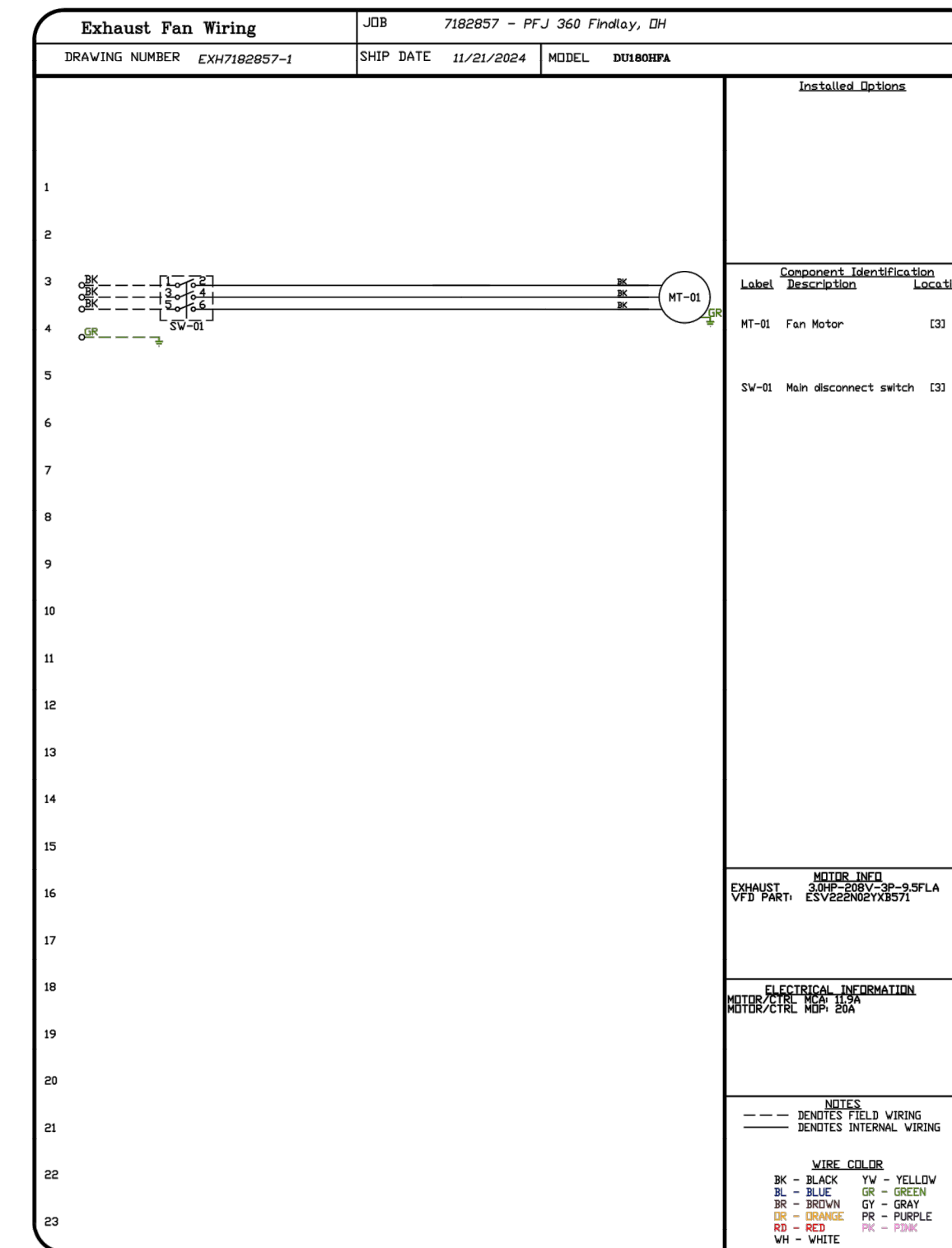
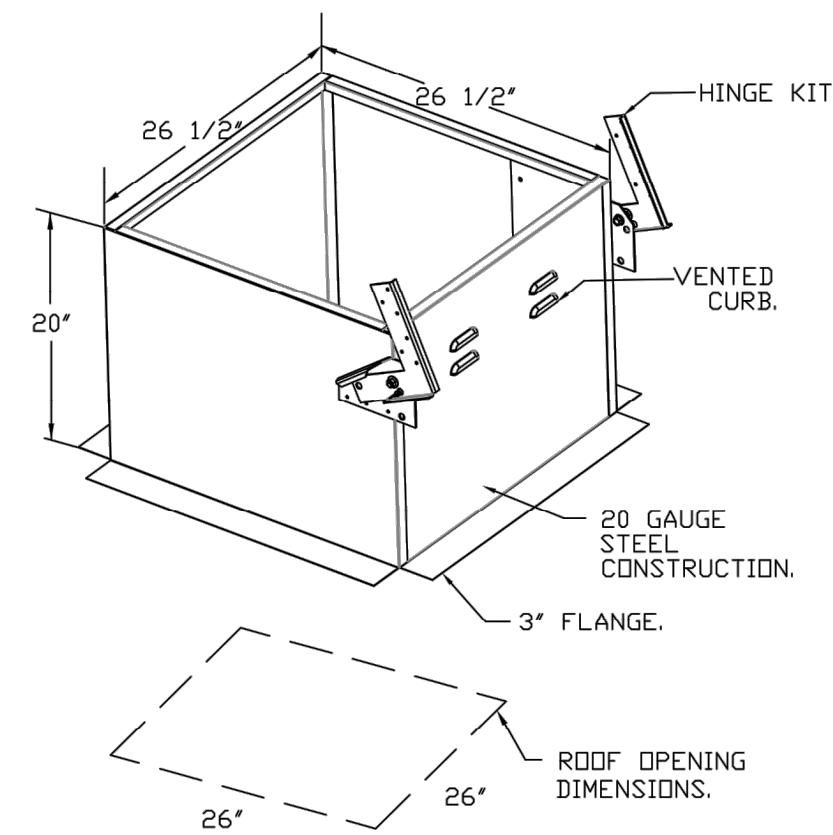
NORMAL TEMPERATURE TEST
EXHAUST FAN MUST OPERATE CONTINUOUSLY WHILE EXHAUSTING AIR AT 300°F (149°C) UNTIL ALL FAN PARTS HAVE REACHED THERMAL EQUILIBRIUM, AND WITHOUT ANY DETERIORATING EFFECTS TO THE FAN WHICH WOULD CAUSE UNSAFE OPERATION.

ABNORMAL FLARE-UP TEST
EXHAUST FAN MUST OPERATE CONTINUOUSLY WHILE EXHAUSTING BURNING GREASE VAPORS AT 600°F (316°C) FOR A PERIOD OF 15 MINUTES WITHOUT THE FAN BECOMING DAMAGED TO ANY EXTENT THAT COULD CAUSE AN UNSAFE CONDITION.

OPTIONS

- GREASE BOX.
- FAN BASE CERAMIC SEAL - DU/DR180HFA
- INSTALLED AT PLANT - FOR GREASE DUCTS.
- 2 YEAR PARTS WARRANTY.

EF-1



BLUE ENERGY DESIGN
10348 BLUEGRASS PKWY
LOUISVILLE, KY 40299
P: (502) 792-7575 F: (502) 792-7578



This item has been digitally signed and sealed by KEITH T. DOHN on the date adjacent to the seal. Printed copies of this document are not considered signed & sealed and the signature must be verified on any electronic copies.

PFJ 360 Findlay, OH
14471 SR 613 west,
FINDLAY, OH, 45840

DATE: 11/21/2024

DWG.#:
7182857

DRAWN BY:
BMG

SCALE:
NOT TO SCALE

MASTER DRAWING

SHEET NO.
6

REVISIONS

NO.	DESCRIPTION	DATE

CAPTIVEAIRE
Southeast HVAC Direct
4519 George Road, Suite 150, Tampa, FL 33634 PHONE: (813) 995-3479 EMAIL: reg820@captiveaire.com

CAPTIVEAIRE EQUIPMENT - EXHAUST FAN DRAWINGS, SCHEDULES, AND DETAILS

PILOT TRAVEL CENTER
14471 SR 613 WEST
FINDLAY, OH 45840

DATE: 12/13/24 DRAWN BY: KEC PROJECT: 360-05
DESIGN LVL: 12/13/24 L12/13/24
REVISION DESCRIPTION:

NO.	DESCRIPTION

PAGE INTERWORKS, P.A.
ENGINEERS & CONSULTANTS
923 MAIN STREET, NORTH WILKESBORO, NC 28659
PHONE: 336-647-4225

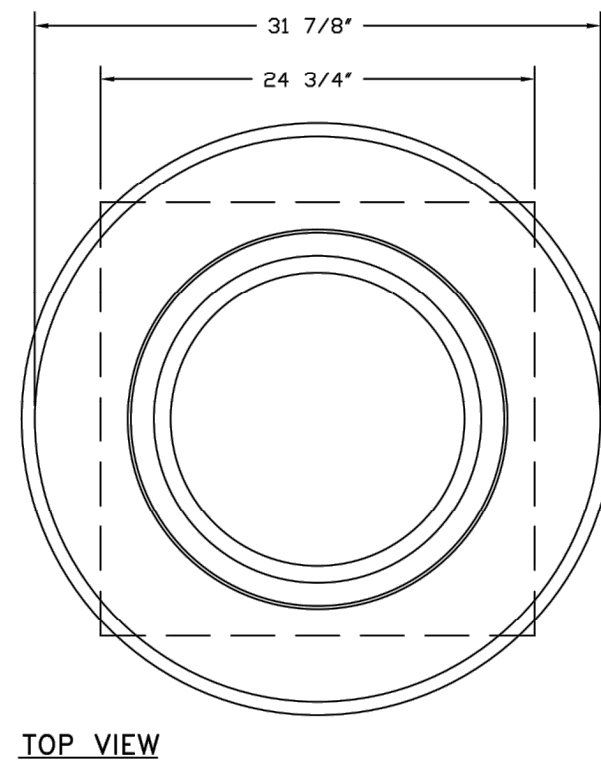
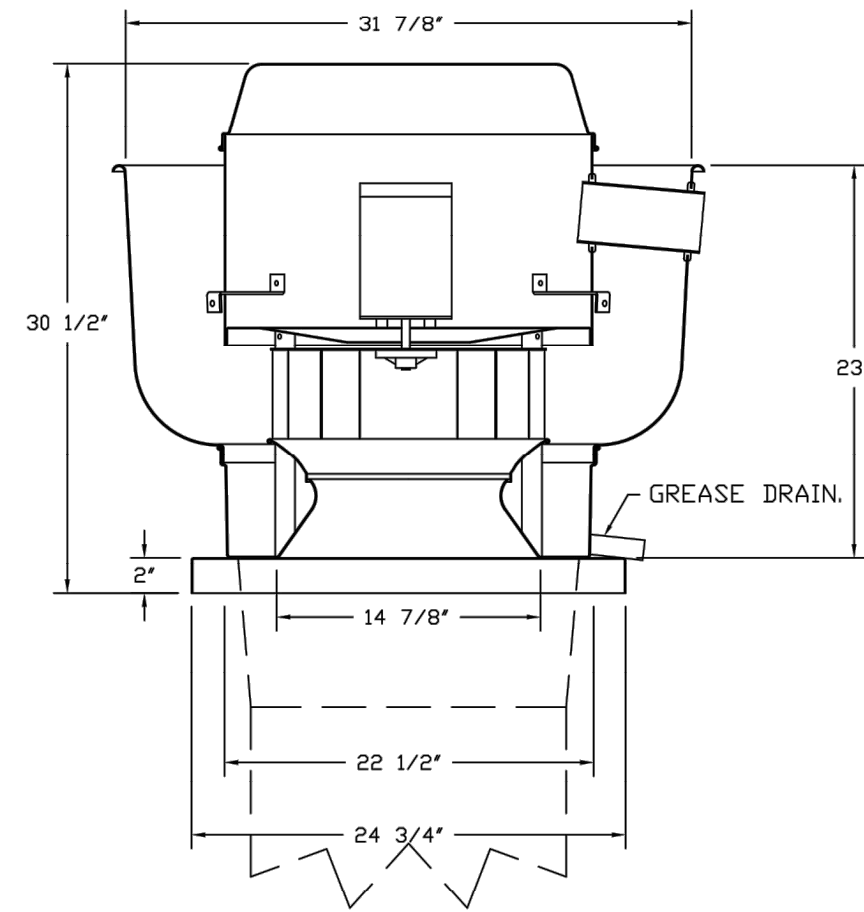
SHEET:
M3.6

PILOT COMPANY
DESIGN DEPARTMENT
5508 LONAS ROAD
KNOXVILLE, TENNESSEE 37909
(865) 588-7488



CONFIDENTIAL
NO USE OR DISCLOSURE OF THIS DRAWING
IS PERMITTED EXCEPT AS EXPRESSLY
AUTHORIZED BY PILOT COMPANY

FAN_B2_DR8SHFA - EXHAUST FAN (EF-2)



FEATURES:

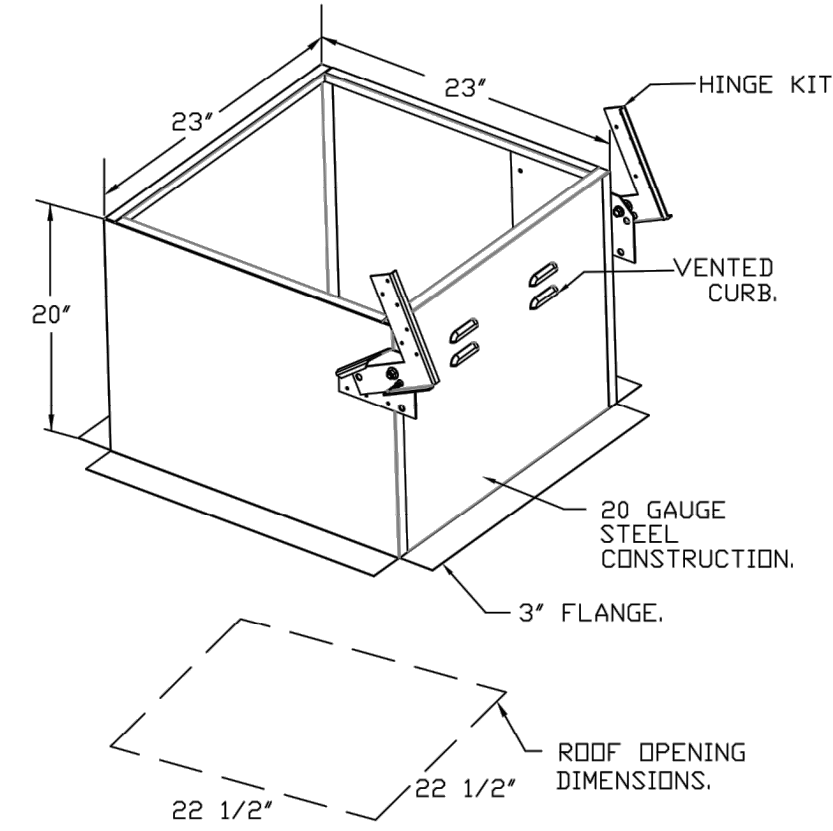
- DIRECT DRIVE CONSTRUCTION (NO BELTS/PULLEYS).
- ROOF MOUNTED FANS.
- RESTAURANT MODEL.
- UL705 AND UL762 AND ULC-S645
- VARIABLE SPEED CONTROL.
- INTERNAL WIRING.
- THERMAL OVERLOAD PROTECTION (SINGLE PHASE).
- HIGH HEAT OPERATION 300°F (149°C).
- GREASE CLASSIFICATION TESTING.
- NEMA 3R SAFETY DISCONNECT SWITCH.

NORMAL TEMPERATURE TEST
EXHAUST FAN MUST OPERATE CONTINUOUSLY WHILE EXHAUSTING AIR AT 300°F (149°C) UNTIL ALL FAN PARTS HAVE REACHED THERMAL EQUILIBRIUM, AND WITHOUT ANY DETRIMENTAL EFFECTS TO THE FAN WHICH WOULD CAUSE UNSAFE OPERATION.

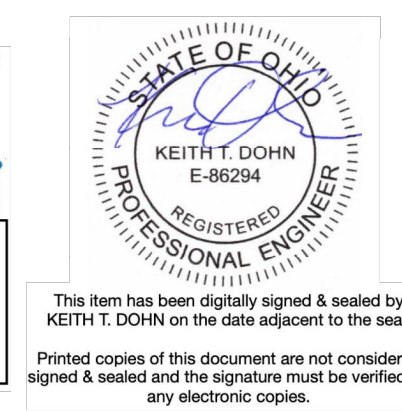
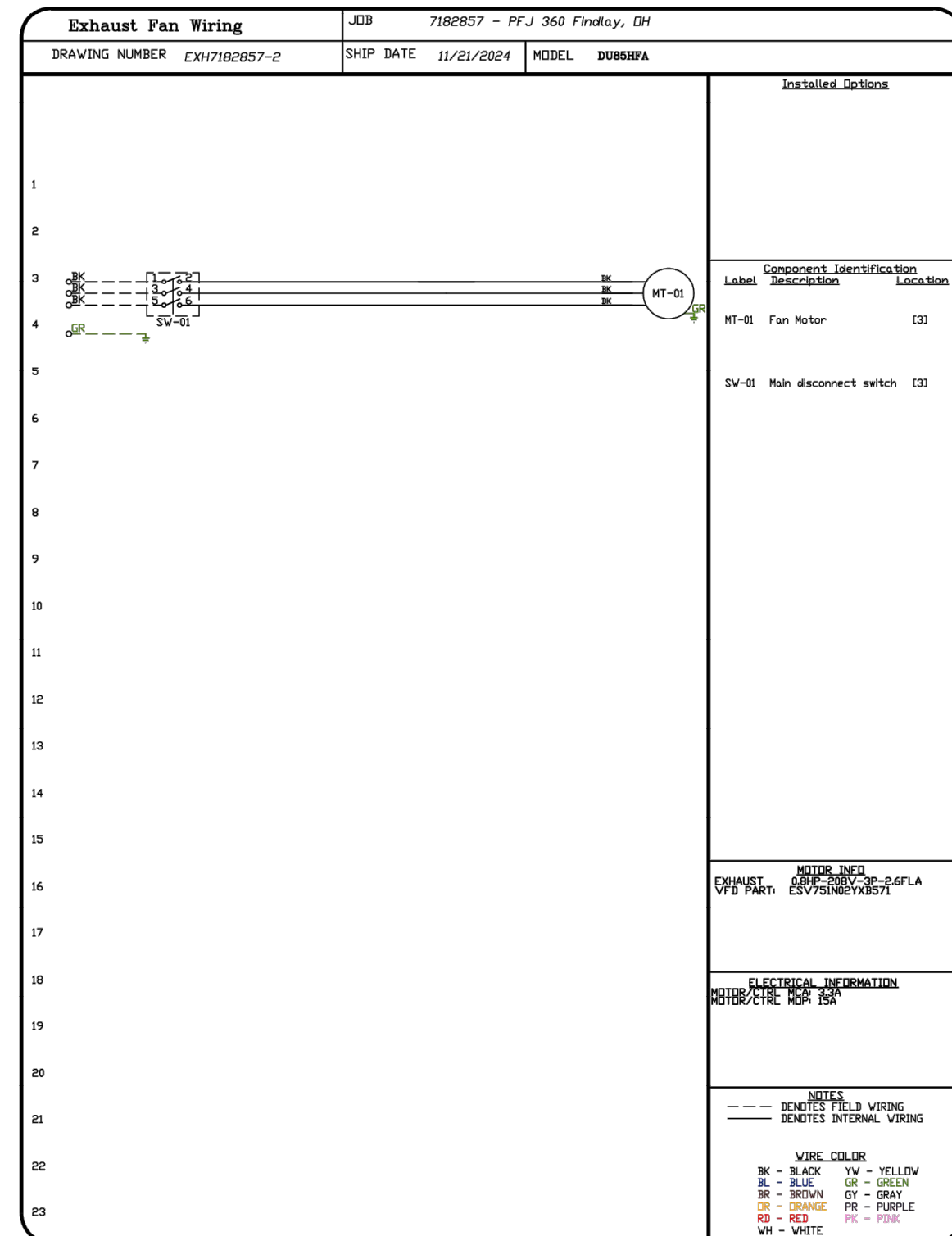
ABNORMAL FLARE-UP TEST
EXHAUST FAN MUST OPERATE CONTINUOUSLY WHILE EXHAUSTING BURNING GREASE VAPORS AT 600°F (316°C) FOR A PERIOD OF 15 MINUTES WITHOUT THE FAN BECOMING DAMAGED TO ANY EXTENT THAT COULD CAUSE AN UNSAFE CONDITION.

OPTIONS

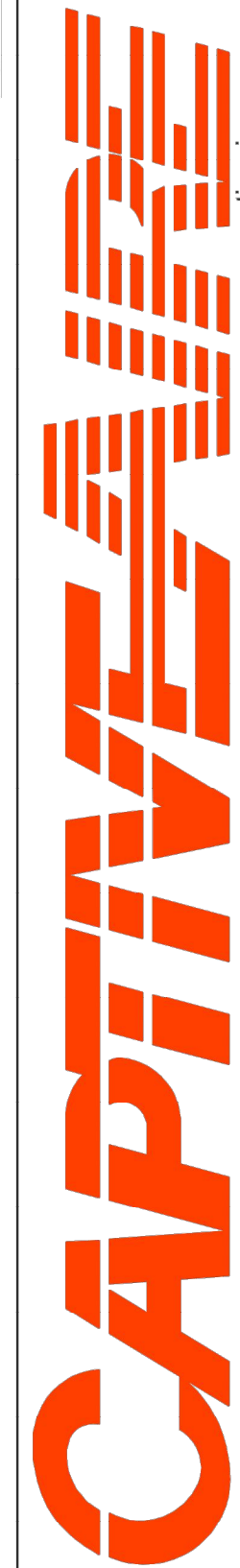
- GREASE BOX.
- FAN BASE CERAMIC SEAL - DU/DR8SHFA
- INSTALLED AT PLANT - FDR GREASE DUCTS.
- 2 YEAR PARTS WARRANTY.



EF-2



REVISIONS	
DESCRIPTION	DATE

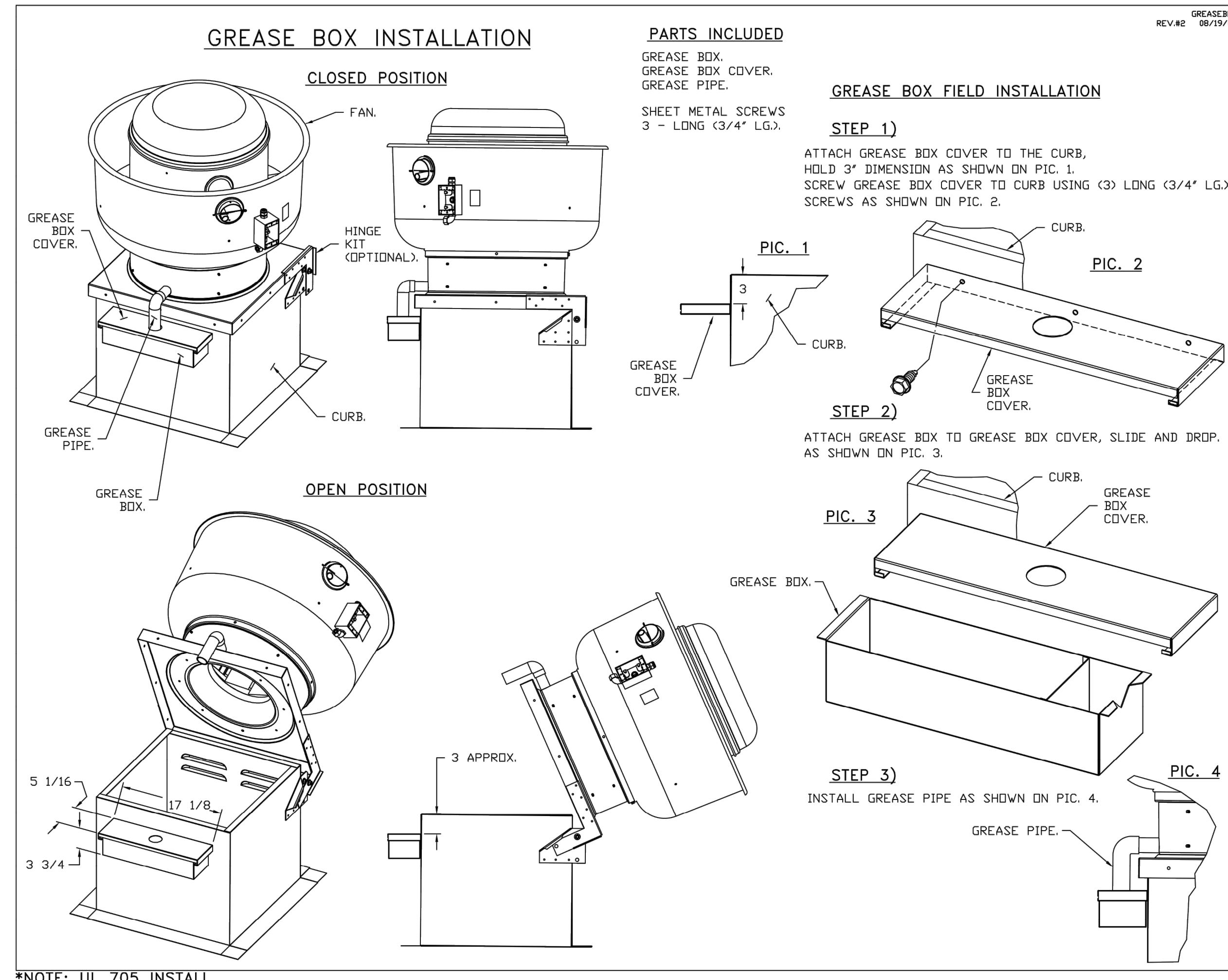


www.captiveair.com
Southeast HVAC Direct
4819 George Road, Suite 150, Tampa, FL 33634 PHONE: (813) 995-3479 EMAIL: reg@20@captiveair.com

PILOT COMPANY
DESIGN DEPARTMENT
5508 LONAS ROAD
KNOXVILLE, TENNESSEE 37909
(865) 688-7488



CAPTIVE AIR EQUIPMENT - EXHAUST FAN AND GREASE BOX DRAWINGS
PILOT TRAVEL CENTER
14471 SR 613 WEST
FINDLAY, OH 45840



*NOTE: UL 705 INSTALL.

PFJ 360 Findlay, OH
14471 SR 613 west,
FINDLAY, OH, 45840

DATE: 11/21/2024	DATE: 12/13/24
DWG.#: 7182857	DRAWN BY: BMG
SCALE: NOT TO SCALE	MASTER DRAWING
SHEET NO. 7	

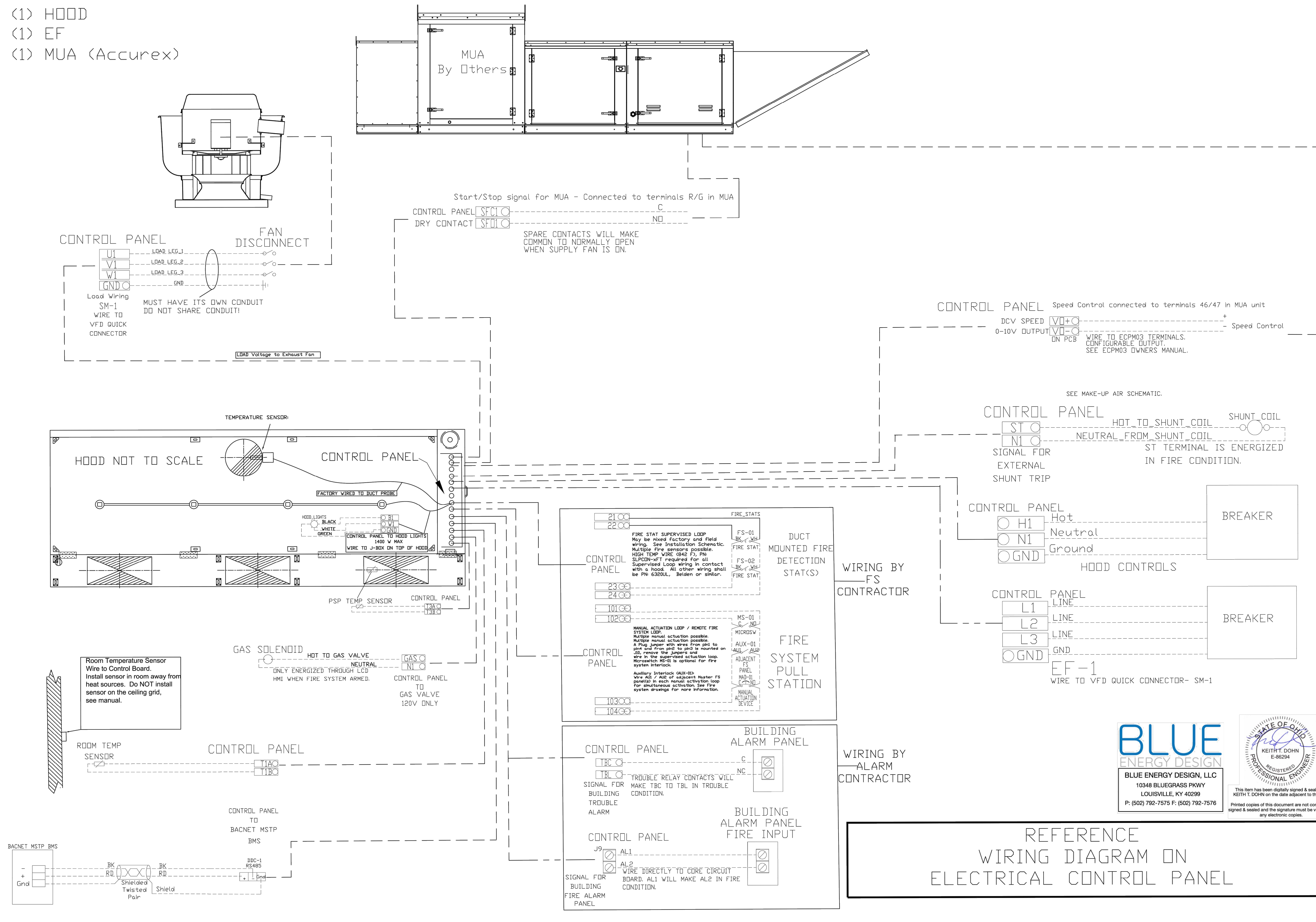
PAGE
INTERWORKS, P.A.
ENGINEERS & CONSULTANTS
923 MAIN STREET, NORTH WILKESBORO, NC 28659
PHONE: 336-647-4225

SHEET:
M3.7

WIRING OVERVIEW

HOOD-1 PJ FRESH

- (1) HOOD
- (1) EF
- (1) MUA (Accurex)

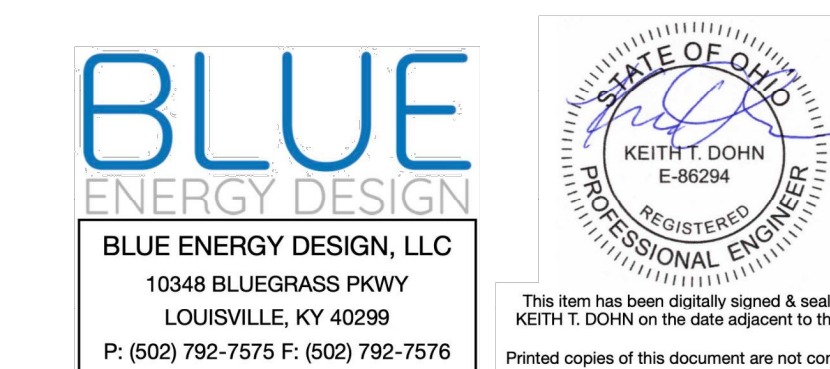


REVISIONS	
DESCRIPTION	DATE



SEVENTH HVAC Direct
 4519 George Road, Suite 150, Tampa, FL 33634 PHONE: (813) 995-3479 EMAIL: rfg@captivedirect.com

DATE: 11/21/2024
 DWG.#: 7182857
 DRAWN BY: BMG
 SCALE: NOT TO SCALE
 MASTER DRAWING
 SHEET NO. 8



REFERENCE WIRING DIAGRAM ON ELECTRICAL CONTROL PANEL

1/31/25

PILOT COMPANY
 DESIGN DEPARTMENT
 5508 LONAS ROAD
 KNOXVILLE, TENNESSEE 37909
 (865) 588-7488

CAPTIVEAIR EQUIPMENT - MAU AND EF
 WIRING OVERVIEW

PILOT TRAVEL CENTER
 14471 SR 613 WEST
 FINDLAY, OH 45840

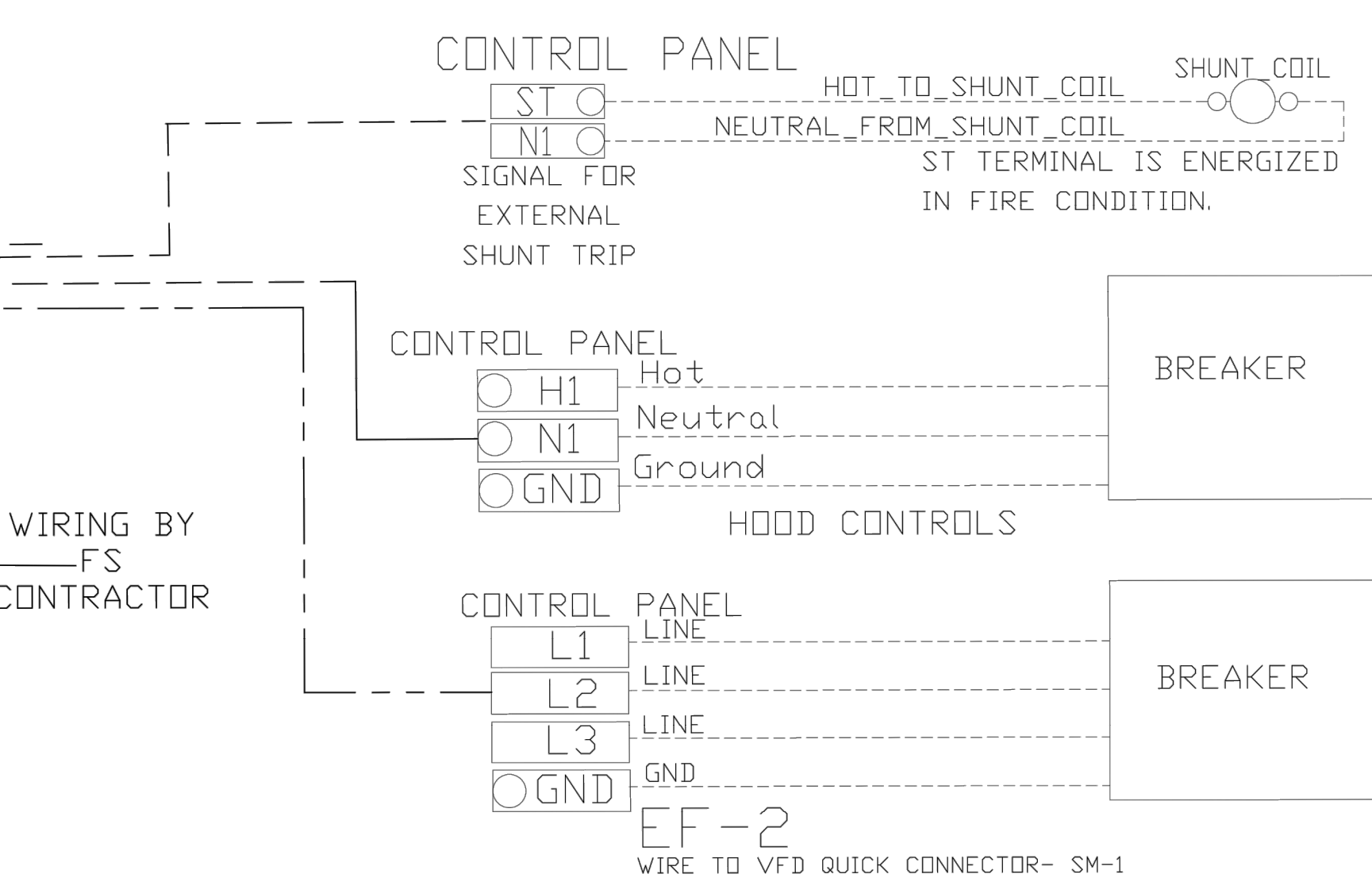
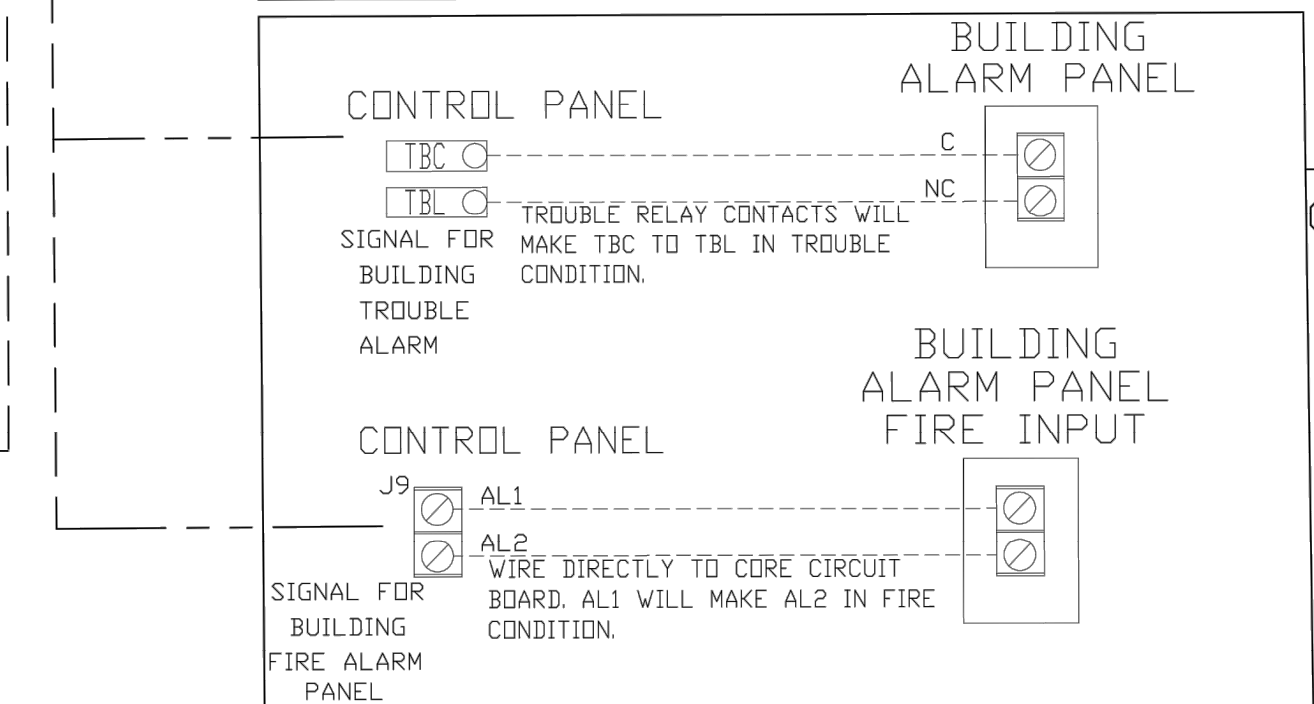
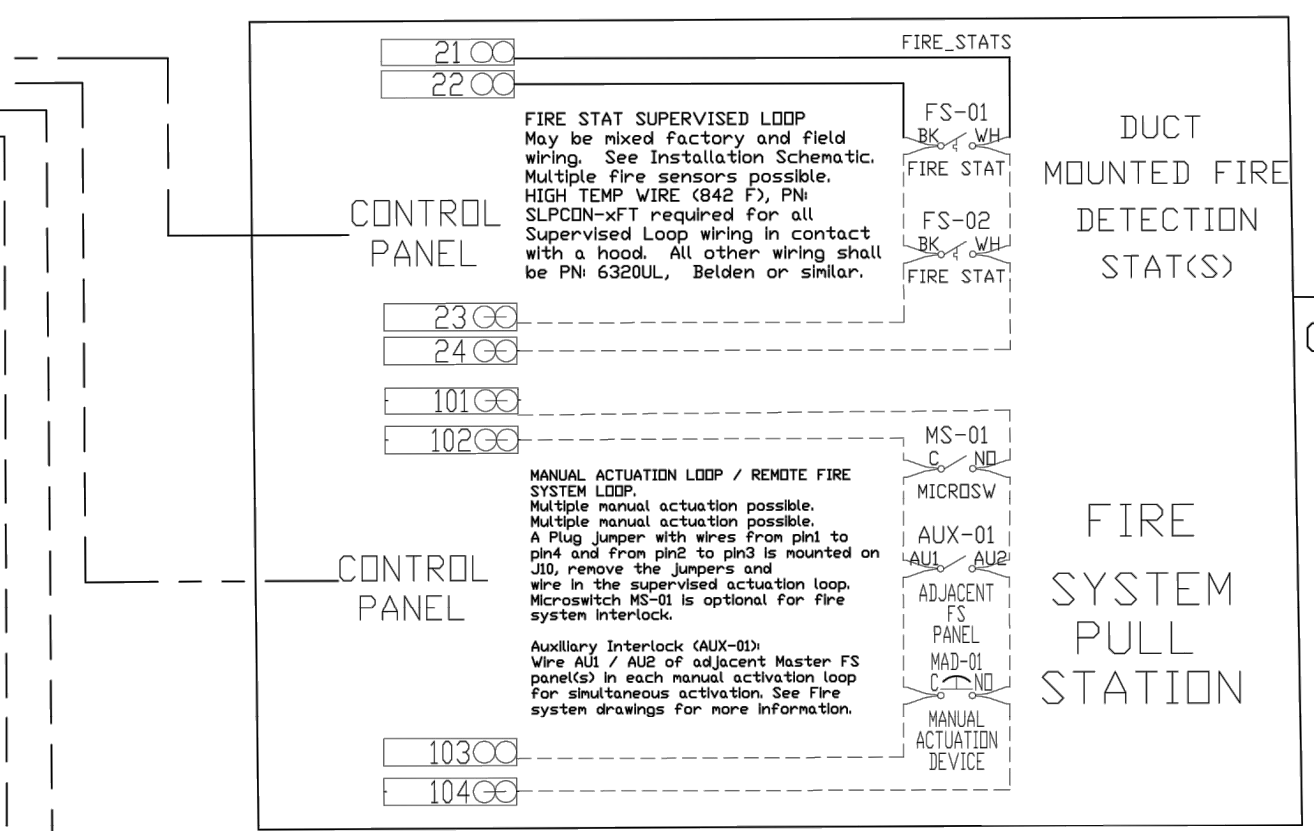
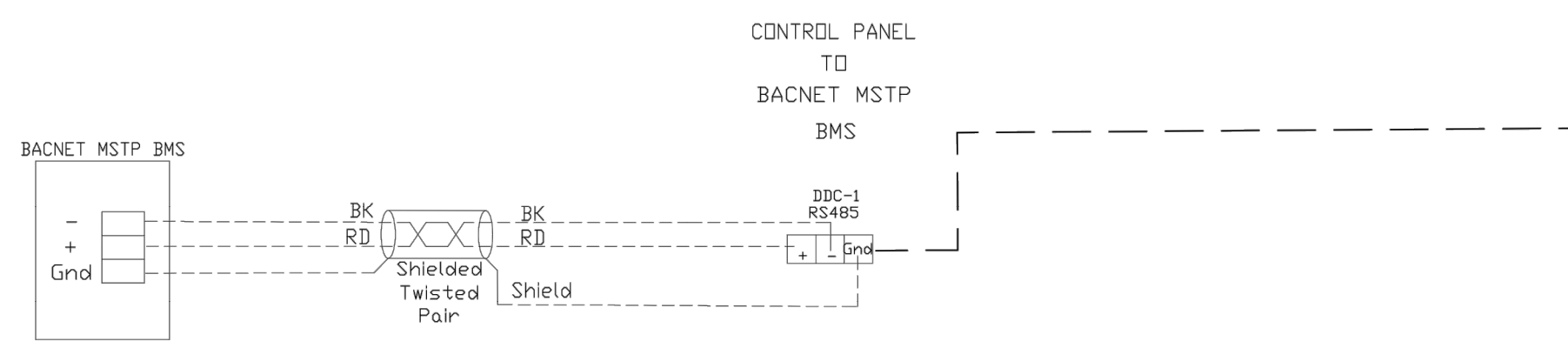
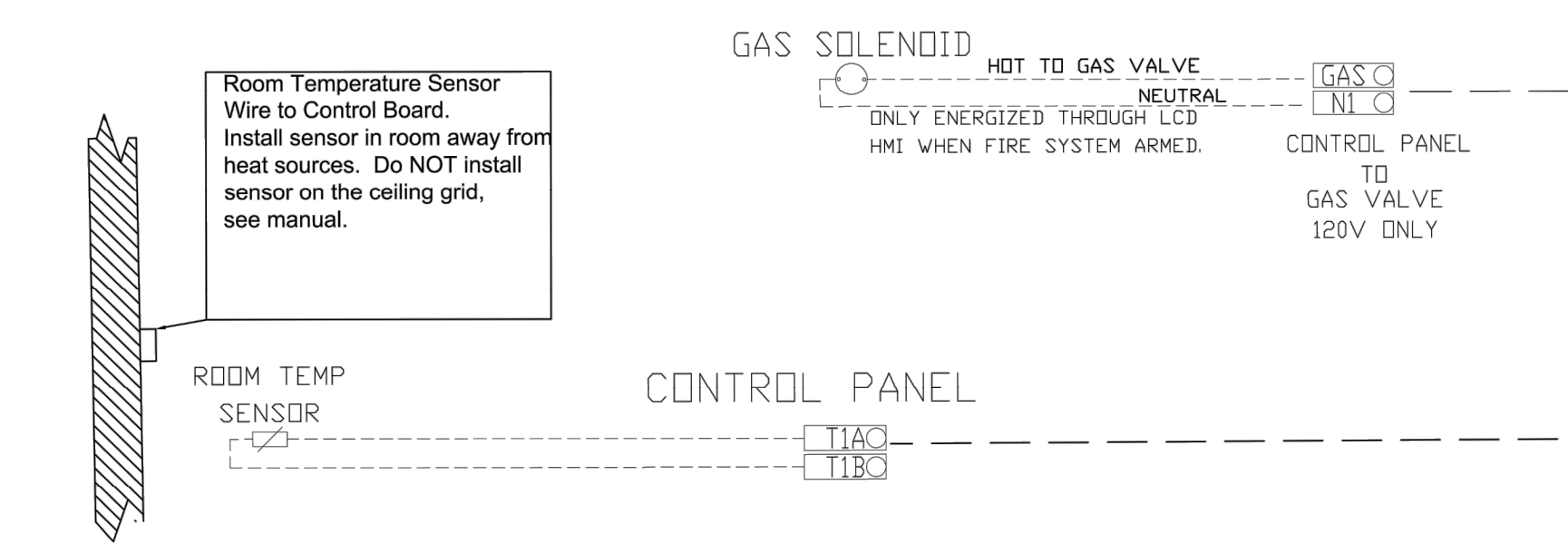
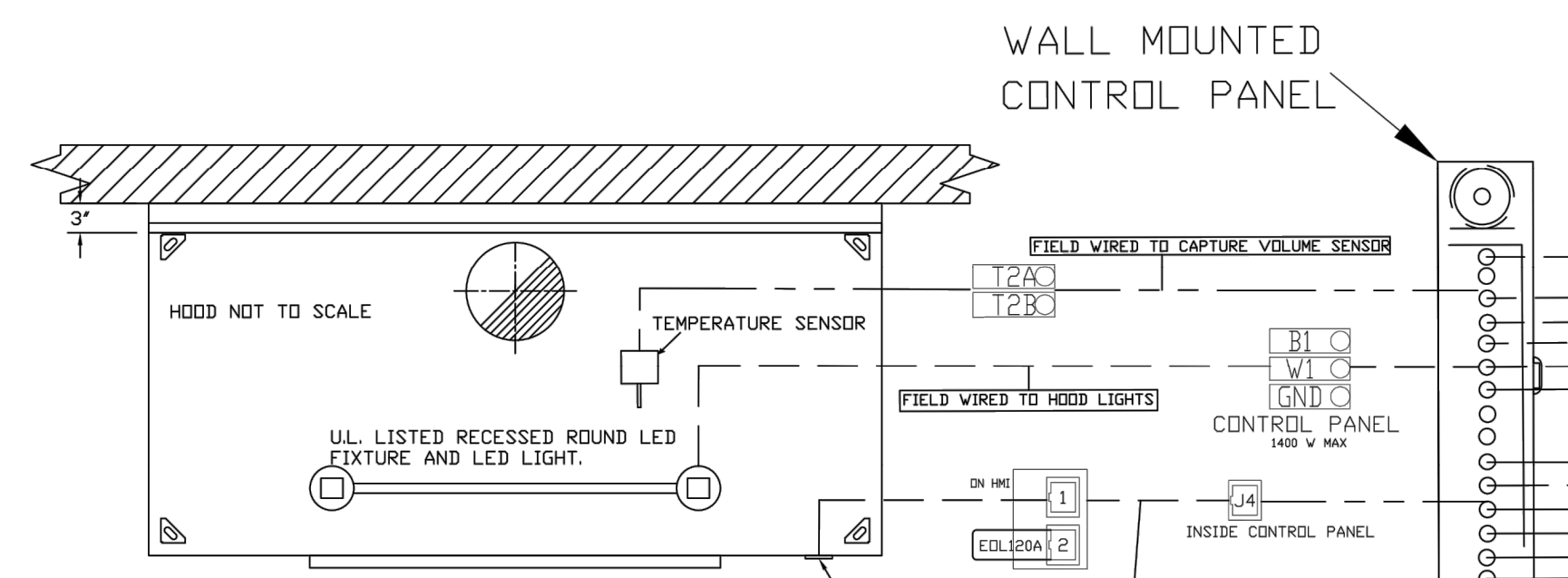
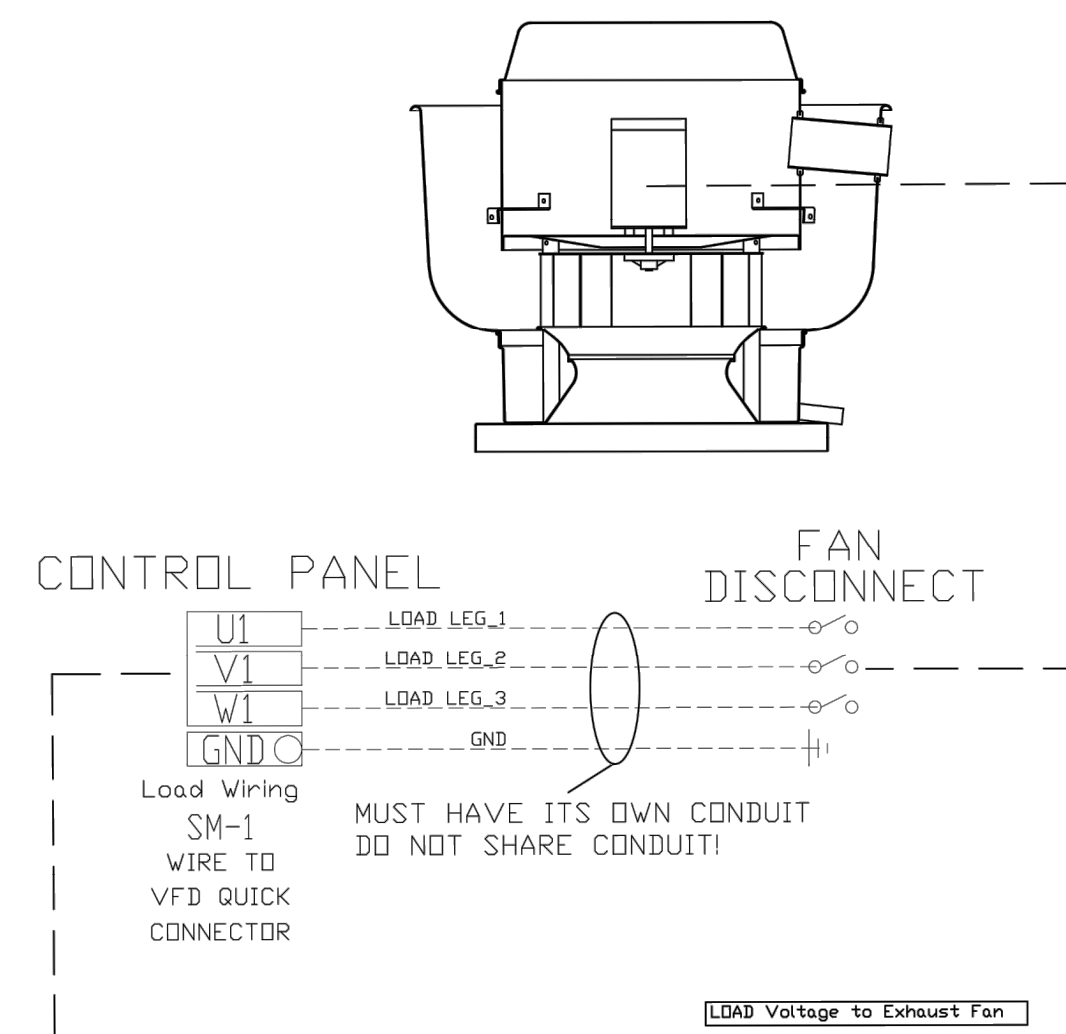
DATE	REV	DESCRIPTION
12/13/24	1	DRAWN BY: REC PROJECT: 360-05

PAGE
 INTERWORKS, P.A.
 ENGINEERS & CONSULTANTS
 923 MAIN STREET, NORTH WILKESBORO, NC 28659
 PHONE: 336-667-4225

SHEET:
M3.8

WIRING OVERVIEW

- (1) HOOD
- (1) EF



REFERENCE WIRING DIAGRAM ON ELECTRICAL CONTROL PANEL

BLUE ENERGY DESIGN
 BLUE ENERGY DESIGN, LLC
 10348 BLUEGRASS PKWY
 LOUISVILLE, KY 40299
 P: (502) 792-7575 F: (502) 792-7576

STATE OF OHIO
 KEITH T. DOHN
 E-92034
 REGISTERED PROFESSIONAL ENGINEER

This item has been digitally signed & sealed by KEITH T. DOHN on the date adjacent to the seal.
 Printed copies of this document are not considered signed & sealed and the signature must be verified on any electronic copies.

REVISIONS	
DESCRIPTION	DATE

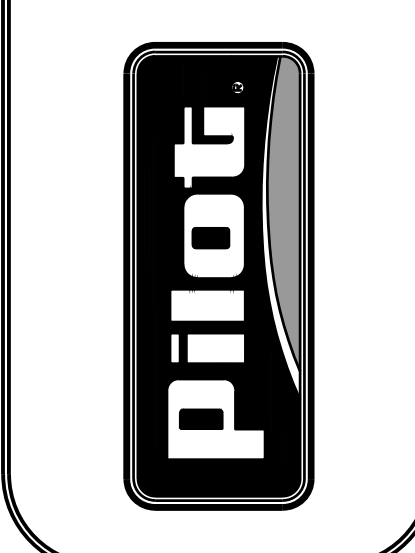
CAPTIVE
 Southeast HVAC Direct
 4519 George Road, Suite 150, Tampa, FL 33634 PHONE: (813) 995-3479 EMAIL: mg020@captiveaire.com
 www.captiveaire.com

PFJ 360 Findlay, OH
 14471 SR 613 west,
 FINDLAY, OH, 45840

DATE: 11/21/2024	DWG.#: 7182857
DRAWN BY: BMG	SCALE: NOT TO SCALE
MASTER DRAWING	SHEET NO. 9

PAGE
 INTERWORKS, P.A.
 ENGINEERS & CONSULTANTS
 923 MAIN STREET, NORTH WILKESBORO, NC 28659
 PHONE: 336-647-4225

PILOT COMPANY
 DESIGN DEPARTMENT
 5508 LONAS ROAD
 KNOXVILLE, TENNESSEE 37909
 (865) 588-7488



CAPTIVEAIR EQUIPMENT - HOOD AND EXHAUST FAN WIRING OVERVIEW
 PILOT TRAVEL CENTER
 14471 SR 613 WEST
 FINDLAY, OH 45840

DATE: 12/13/24	DRAWN BY: REC	PROJECT: 360-05
DATE: REV:	DESIGN BY:	LEADER: 24348
		REVISION DESCRIPTION:

SHEET: M3.9