

Walgreens



WAG HVAC Start-Up AES

Site ID: 225198

Address: 14656 Ambaum Blvd

City: Burien

State: Washington

Zip: 98166

Survey Date: 11/6/2022

Start-Up Date: 11/06/2022

Start-Up Technician: Ousman Taal

Start-Up Technician Signature:

A handwritten signature in black ink, appearing to read 'Ousman Taal'.

Walgreens Installing HVAC Contractor: AES
Mechanical

HVAC Contractor Phone: 3349916601

Contractor's Email Address:

Ousman.taal02@aesmech.com

ADDITIONAL OVERALL SITE PHOTOS



RTU UNIT INFORMATION

RTU Unit Number / Serves Store Area Description:	Office
RTU Make:	York
RTU Manufacturer:	JCI
RTU Model Number:	J090n12r2b5gcb2r2
RTU Serial Number:	N2k2996884
Heating System:	Natural Gas

RTU Unit Name Plate Photo



RTU Walgreens Asset Tag Photo



Scan RTU Walgreens Asset Tag Barcode Number:	WG0000524916
JCI Warranty Registration Completed?	Yes

Installed Temperature Control Serving this Unit:
Honeywell Vision Pro 8000 Thermostats with Remote Zone Sensors

RTU GENERAL INSPECTION

RTU Refrigeration System Checked for Gross Leaks	Completed
RTU Terminal Screws and Wiring Connections Checked for Tightness	Completed
Air Filters Installed Correctly and Clean	Completed

Installed RTU Air Filter Photo



RTU Economizer Hoods Installed in Operating Position

Completed

Installed RTU Economizer Photo



RTU Condensate Drain CostGard System Installed Properly

Completed

RTU Condensate Drain Extended to Nearest Roof Drain

Completed

Installed RTU Condensate Drain Photo



RTU Economizer Damper Linkage Tight

Completed

Completed RTU Economizer Damper Linkage Photo



RTU Gas Heat Vent Hood Installed

Completed

Installed RTU Gas Heat Vent Hood Photo



All RTU Field Power Wiring Complete

Completed

All RTU Field Power Wiring Photo



All RTU Field Control Wiring Complete

Completed

All RTU Field Control Wiring Photo



All RTU Field Natural Gas / Propane Piping Complete

Completed

All RTU Field Natural Gas / Propane Piping Photo



RTU Gas Shut-Off Valve in ON Position

Completed

RTU Gas Shut-Off Valve in ON Position Photo



RTU Correctly Labeled on Exterior Using 4 inch x 2 inch Exterior Reflective Labels with RTU # Designation

Completed

RTU Label Photo



Seismic Adapter Clips Furnished and Installed on RTU

Yes

If Seismic Adapter Clips Furnished and Installed on RTU, take Photo



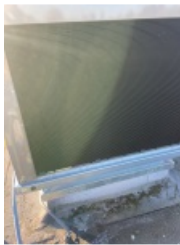
All 5 Sides of Installed Unit of RTU - Including Top with Condensor Fan Section.



Interior Pictures of RTU Blower Section, Power / Control Section, Heat Section, Compressor Section.



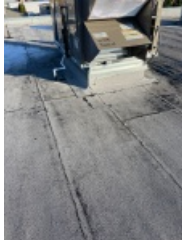
Complete / Clear Pictures of All RTU Condenser Coil and Evaporator Coil Surfaces.



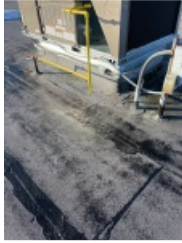
All RTU Electric and Heat Utility Piping Through Roof and All Connections / Penetrations at the Unit.



Roof Areas Around RTU Unit Showing the Areas are Clean and Free of Any Debris or Damage Related to the Installation.



Pictures of RTU Unit Mounting to Roof Curb / Adapter Curb Showing Proper Alignment and Sealing.



AIR MOVING INSPECTION

Alignment of RTU Drive Components

Completed

Alignment of RTU Drive Component Photo



Alignment of Blower Pulley Key Flush with End of Blower Shaft



RTU Belt Tension Adjusted Properly

Completed

RTU Blower Pulleys Tight on Shaft, Bearing Set Screws Tight, Wheel Tight to Shaft.

Completed

RTU Pressure Switch or Transducer Tubing Installed Properly

Completed

RTU Pressure Switch / Transducer Tubing Photo



EXHAUST INSPECTION

Exhaust Type	Barometric Relief
Check Hub for Tightness	Complete
Check Fan Blade for Clearance	Complete
Check for Proper Rotation	Complete
Check for Proper Mounting	Complete
Prove Operation by Increasing Minimum Setting on Economizer	Complete

ECONOMIZER INSPECTION

Economizer Type	Standard
C02 Sensor Installed	Complete

Installed C02 Sensor Photo



Check Single Enthalpy Economizer Setting	Completed
Prove Economizer Open / Close Through PC or Control Module	Completed

REHEAT MODE

Set Reheat Mode to Alternate or Not Applicable	Completed
--	-----------

RTU BLOWER INFORMATION

RTU Blower Motor Rated HP	3
RTU Blower Motor Rated FLA	9.6
RTU Blower Motor Rated RPM	1750
Check Proper Rotation of RTU Supply Fan	Completed
RTU Blower Motor Controlled by VFD	Yes
RTU Direct Drive Blower Motor	Yes

RTU ELECTRICAL DATA - VOLTAGE

RTU Line Input Voltage

208-230 / 3 / 60

Line Input Voltage	
L1	209
L2	207
L3	203

	Nameplate	L1	L2	L3
Supply Fan Motor		9.3	9.5	9.7
Compressor #1		13.2	13.7	13.5
Compressor #2 (if equipped)		13.5	13.6	13.4

	Discharge Pressure	Discharge Temp	Liquid Line Temp Befor LL Drier	Subcooling	Suction Pressure	Suction Temp.	Superheat
Stage 1	246				134		
Stage 2	249				130		

RTU OPERATING MEASUREMENTS - GAS HEATING

Fuel Type:

Natural Gas

Check RTU for Gas Leaks

 Completed

Prove RTU Venter Motor Operation

 Completed

Prove RTU Primary Safety Operation

 Completed

OPERATIONAL MEASUREMENTS - STAGING CONTROLS

Create a RTU cooling demand at the Thermostat, BAS System or Simplicity PC Verify that cooling/economizer stages are energized.

Yes

Create a RTU heating demand at the Thermostat, BAS System or Simplicity PC Verify that heating stages are energized.

Yes

FINAL INSPECTION

Run All RTU Gas / Electric Heating Systems at Full Capacity for a minimum of 20 Minutes to Burn Off any impurities on the heating section materials. Place Fire Alarm Panel in Test and Inform Store Management that burning odor may be present for a short time but is normal for new equipment at Start-up.

Completed

Verify that all RTU operational control set points have been set to Walgreens desired value Scroll through all setpoints and verify all have been set to Walgreens specifications.

Yes

Verify that all RTU option parameters are correct. Scroll through all option parameters and ensure that all installed options are enabled in the software and all others are disabled in the software.

Yes

RTU UNIT INFORMATION

Location Other Than Roof

Front sales

RTU Unit Number / Serves Store Area Description:

Front sales

RTU Make:

York

RTU Manufacturer:

JCI

RTU Model Number:

Zr090n12r2b5gcb2r1

RTU Serial Number: N2L2019508

Heating System: Natural Gas

RTU Unit Name Plate Photo



RTU Walgreens Asset Tag Photo



Scan RTU Walgreens Asset Tag Barcode Number: WG0000524915

JCI Warranty Registration Completed? Yes

Installed Temperature Control Serving this Unit:
Honeywell Vision Pro 8000 Thermostats with Remote Zone Sensors

RTU GENERAL INSPECTION

RTU Refrigeration System Checked for Gross Leaks Completed

RTU Terminal Screws and Wiring Connections Checked for Tightness Completed

Air Filters Installed Correctly and Clean Completed

Installed RTU Air Filter Photo



RTU Economizer Hoods Installed in Operating Position Completed

Installed RTU Economizer Photo



RTU Condensate Drain CostGard System Installed Properly

Completed

RTU Condensate Drain Extended to Nearest Roof Drain

Completed

Installed RTU Condensate Drain Photo



RTU Economizer Damper Linkage Tight

Completed

Completed RTU Economizer Damper Linkage Photo



RTU Gas Heat Vent Hood Installed

Completed

Installed RTU Gas Heat Vent Hood Photo



All RTU Field Power Wiring Complete

Completed

All RTU Field Power Wiring Photo



All RTU Field Control Wiring Complete

Completed

All RTU Field Control Wiring Photo



All RTU Field Natural Gas / Propane Piping Complete

Completed

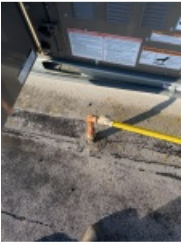
All RTU Field Natural Gas / Propane Piping Photo



RTU Gas Shut-Off Valve in ON Position

Completed

RTU Gas Shut-Off Valve in ON Position Photo



RTU Correctly Labeled on Exterior Using 4 inch x 2 inch Exterior Reflective Labels with RTU # Designation

Completed

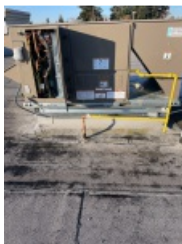
RTU Label Photo



Seismic Adapter Clips Furnished and Installed on RTU

Yes

If Seismic Adapter Clips Furnished and Installed on RTU, take Photo



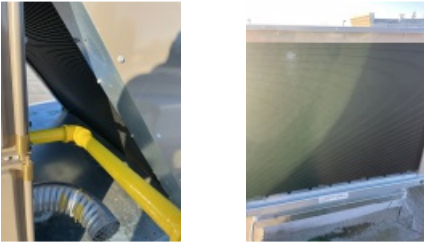
All 5 Sides of Installed Unit of RTU - Including Top with Condensor Fan Section.



Interior Pictures of RTU Blower Section, Power / Control Section, Heat Section, Compressor Section.



Complete / Clear Pictures of All RTU Condenser Coil and Evaporator Coil Surfaces.



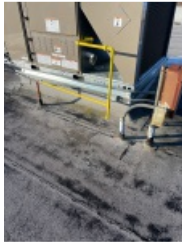
All RTU Electric and Heat Utility Piping Through Roof and All Connections / Penetrations at the Unit.



Roof Areas Around RTU Unit Showing the Areas are Clean and Free of Any Debris or Damage Related to the Installation.



Pictures of RTU Unit Mounting to Roof Curb / Adapter Curb Showing Proper Alignment and Sealing.



AIR MOVING INSPECTION

Alignment of RTU Drive Components Completed

Alignment of RTU Drive Component Photo



Alignment of Blower Pulley Key Flush with End of Blower Shaft



RTU Belt Tension Adjusted Properly Completed

RTU Blower Pulleys Tight on Shaft, Bearing Set Screws Tight, Wheel Tight to Shaft. Completed

RTU Pressure Switch / Transducer Tubing Photo



EXHAUST INSPECTION

Exhaust Type Barometric Relief

Check Hub for Tightness Complete

Check Fan Blade for Clearance Complete

Check for Proper Rotation Complete

Check for Proper Mounting Complete

ECONOMIZER INSPECTION

Economizer Type	Standard
C02 Sensor Installed	N/A
Check Single Enthalpy Economizer Setting	Completed

REHEAT MODE

Set Reheat Mode to Alternate or Not Applicable	Completed
--	-----------

RTU BLOWER INFORMATION

RTU Blower Motor Rated HP	3
RTU Blower Motor Rated FLA	9.6
RTU Blower Motor Rated RPM	1750
Check Proper Rotation of RTU Supply Fan	Completed
RTU Blower Motor Controlled by VFD	Yes
RTU Direct Drive Blower Motor	Yes

RTU ELECTRICAL DATA - VOLTAGE

RTU Line Input Voltage 208-230 / 3 / 60

Line Input Voltage	
L1	209
L2	208
L3	208

	Nameplate	L1	L2	L3
Supply Fan Motor		9.5	9.3	9.6
Compressor #1		13.0	13.3	13.2
Compressor #2 (if equipped)		13.1	13.0	13.2

	Discharge Pressure	Discharge Temp	Liquid Line Temp Befor LL Drier	Subcooling	Suction Pressure	Suction Temp.	Superheat
Stage 1	240				125		
Stage 2	243				121		

RTU OPERATING MEASUREMENTS - GAS HEATING

Fuel Type: Natural Gas

Check RTU for Gas Leaks
 Completed

Prove RTU Venter Motor Operation
 Completed

Prove RTU Primary Safety Operation
 Completed

OPERATIONAL MEASUREMENTS - STAGING CONTROLS

Create a RTU cooling demand at the Thermostat, BAS System or Simplicity PC Verify that cooling/economizer stages are energized. Yes

Create a RTU heating demand at the Thermostat, BAS System or Simplicity PC Verify that heating stages are energized.

Yes

FINAL INSPECTION

Run All RTU Gas / Electric Heating Systems at Full Capacity for a minimum of 20 Minutes to Burn Off any impurities on the heating section materials. Place Fire Alarm Panel in Test and Inform Store Management that burning odor may be present for a short time but is normal for new equipment at Start-up.

Completed

Verify that all RTU operational control set points have been set to Walgreens desired value Scroll through all setpoints and verify all have been set to Walgreens specifications.

Yes

Verify that all RTU option parameters are correct. Scroll through all option parameters and ensure that all installed options are enabled in the software and all others are disabled in the software.

Yes

RTU UNIT INFORMATION

RTU Unit Number / Serves Store Area Description:

Sales

RTU Make:

York

RTU Manufacturer:

JCI

RTU Model Number:

Zt078n12r2b5gcb2r1

RTU Serial Number:

N2e2377579

Heating System:

Natural Gas

RTU Unit Name Plate Photo



RTU Walgreens Asset Tag Photo



Scan RTU Walgreens Asset Tag Barcode Number:

WG0000524914

JCI Warranty Registration Completed?

Yes

Installed Temperature Control Serving this Unit:

Honeywell Vision Pro 8000 Thermostats with Remote Zone Sensors

RTU GENERAL INSPECTION

RTU Refrigeration System Checked for Gross Leaks

Completed

RTU Terminal Screws and Wiring Connections Checked for Tightness

Completed

Air Filters Installed Correctly and Clean

Completed

Installed RTU Air Filter Photo



RTU Economizer Hoods Installed in Operating Position

Completed

Installed RTU Economizer Photo



RTU Condensate Drain CostGard System Installed Properly

Completed

RTU Condensate Drain Extended to Nearest Roof Drain

Completed

Installed RTU Condensate Drain Photo



RTU Economizer Damper Linkage Tight

Completed

Completed RTU Economizer Damper Linkage Photo



RTU Gas Heat Vent Hood Installed

Completed

Installed RTU Gas Heat Vent Hood Photo



All RTU Field Power Wiring Complete

Completed

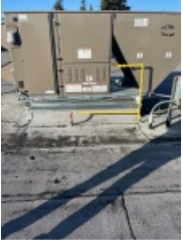
All RTU Field Power Wiring Photo



All RTU Field Control Wiring Complete

Completed

All RTU Field Control Wiring Photo



All RTU Field Natural Gas / Propane Piping Complete

Completed

All RTU Field Natural Gas / Propane Piping Photo



RTU Gas Shut-Off Valve in ON Position

Completed

RTU Gas Shut-Off Valve in ON Position Photo



RTU Correctly Labeled on Exterior Using 4 inch x 2 inch Exterior Reflective Labels with RTU # Designation

Completed

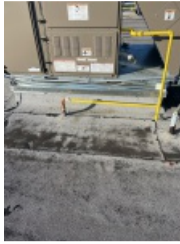
RTU Label Photo



Seismic Adapter Clips Furnished and Installed on RTU

Yes

If Seismic Adapter Clips Furnished and Installed on RTU, take Photo



All 5 Sides of Installed Unit of RTU - Including Top with Condensor Fan Section.



Interior Pictures of RTU Blower Section, Power / Control Section, Heat Section, Compressor Section.



Complete / Clear Pictures of All RTU Condenser Coil and Evaporator Coil Surfaces.



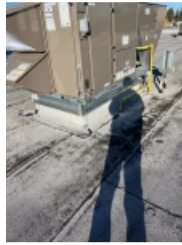
All RTU Electric and Heat Utility Piping Through Roof and All Connections / Penetrations at the Unit.



Roof Areas Around RTU Unit Showing the Areas are Clean and Free of Any Debris or Damage Related to the Installation.



Pictures of RTU Unit Mounting to Roof Curb / Adapter Curb Showing Proper Alignment and Sealing.



AIR MOVING INSPECTION

Alignment of RTU Drive Components

Completed

Alignment of RTU Drive Component Photo



Alignment of Blower Pulley Key Flush with End of Blower Shaft



RTU Belt Tension Adjusted Properly

Completed

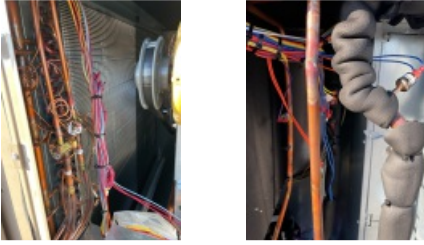
RTU Blower Pulleys Tight on Shaft, Bearing Set Screws Tight, Wheel Tight to Shaft.

Completed

RTU Pressure Switch or Transducer Tubing Installed Properly

Completed

RTU Pressure Switch / Transducer Tubing Photo



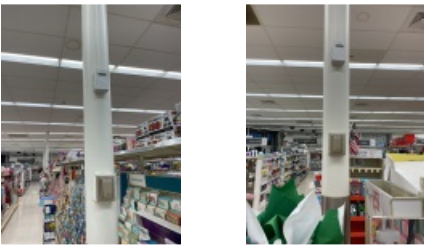
EXHAUST INSPECTION

Exhaust Type	Barometric Relief
Check Hub for Tightness	Complete
Check Fan Blade for Clearance	Complete
Check for Proper Rotation	Complete

ECONOMIZER INSPECTION

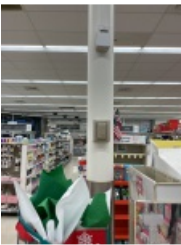
Economizer Type	Standard
C02 Sensor Installed	Complete

Installed C02 Sensor Photo



Check Single Enthalpy Economizer Setting	Completed
--	-----------

Installed Reheat / Indoor Humidity Sensor Photo showing installed location



RTU BLOWER INFORMATION

RTU Blower Motor Rated HP	3
RTU Blower Motor Rated FLA	9.6
RTU Blower Motor Rated RPM	1750
Check Proper Rotation of RTU Supply Fan	Completed
RTU Blower Motor Controlled by VFD	Yes

RTU ELECTRICAL DATA - VOLTAGE

RTU Line Input Voltage

208-230 / 3 / 60

Line Input Voltage	
L1	208
L2	207
L3	209

	Nameplate	L1	L2	L3
Supply Fan Motor		9.3	9.5	9.4
Compressor #1		11.3	11.5	11.7
Compressor #2 (if equipped)		11.4	11.6	11.5

	Discharge Pressure	Discharge Temp	Liquid Line Temp Befor LL Drier	Subcooling	Suction Pressure	Suction Temp.	Superheat
Stage 1	252				147		
Stage 2	247				143		

RTU REFRIGERANT SAFETIES

Prove RTU Compressor Rotation (3 phase only) by gauge pressure

 Completed

RTU OPERATING MEASUREMENTS - GAS HEATING

Fuel Type:

Natural Gas

Check RTU for Gas Leaks

 Completed

OPERATIONAL MEASUREMENTS - STAGING CONTROLS

Create a RTU cooling demand at the Thermostat, BAS System or Simplicity PC Verify that cooling/economizer stages are energized.

Yes

Create a RTU heating demand at the Thermostat, BAS System or Simplicity PC Verify that heating stages are energized.

Yes

FINAL INSPECTION

Run All RTU Gas / Electric Heating Systems at Full Capacity for a minimum of 20 Minutes to Burn Off any impurities on the heating section materials. Place Fire Alarm Panel in Test and Inform Store Management that burning odor may be present for a short time but is normal for new equipment at Start-up.

Completed

Verify that all RTU operational control set points have been set to Walgreens desired value Scroll through all setpoints and verify all have been set to Walgreens specifications.

Yes

Verify that all RTU option parameters are correct. Scroll through all option parameters and ensure that all installed options are enabled in the software and all others are disabled in the software.

Yes

RTU UNIT INFORMATION

RTU Unit Number / Serves Store Area Description:

Sales

RTU Make:

York

RTU Manufacturer:

JCI

RTU Model Number:

Zj090n12r2b5gcb2r2

RTU Serial Number:

N2k2996885

Heating System:

Natural Gas

RTU Unit Name Plate Photo



RTU Walgreens Asset Tag Photo



Scan RTU Walgreens Asset Tag Barcode Number:

WG0000524912

JCI Warranty Registration Completed?

Yes

Installed Temperature Control Serving this Unit:

Honeywell Vision Pro 8000 Thermostats with Remote Zone Sensors

RTU GENERAL INSPECTION

RTU Refrigeration System Checked for Gross Leaks

Completed

RTU Terminal Screws and Wiring Connections Checked for Tightness

Completed

Air Filters Installed Correctly and Clean

Completed

Installed RTU Air Filter Photo



RTU Economizer Hoods Installed in Operating Position

Completed

Installed RTU Economizer Photo



RTU Condensate Drain CostGard System Installed Properly

Completed

RTU Condensate Drain Extended to Nearest Roof Drain

Completed

Installed RTU Condensate Drain Photo



RTU Economizer Damper Linkage Tight

Completed

Completed RTU Economizer Damper Linkage Photo



RTU Gas Heat Vent Hood Installed

Completed

Installed RTU Gas Heat Vent Hood Photo



All RTU Field Power Wiring Complete

Completed

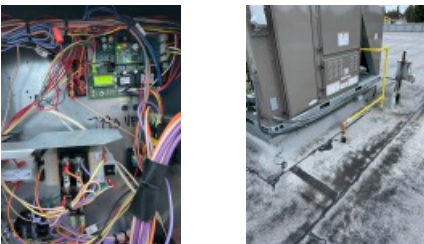
All RTU Field Power Wiring Photo



All RTU Field Control Wiring Complete

Completed

All RTU Field Control Wiring Photo



All RTU Field Natural Gas / Propane Piping Complete

Completed

All RTU Field Natural Gas / Propane Piping Photo



RTU Gas Shut-Off Valve in ON Position

Completed

RTU Gas Shut-Off Valve in ON Position Photo



RTU Correctly Labeled on Exterior Using 4 inch x 2 inch Exterior Reflective Labels with RTU # Designation

Completed

RTU Label Photo



Seismic Adapter Clips Furnished and Installed on RTU

Yes

If Seismic Adapter Clips Furnished and Installed on RTU, take Photo



All 5 Sides of Installed Unit of RTU - Including Top with Condensor Fan Section.



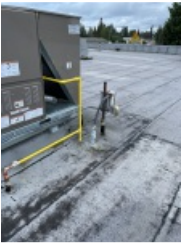
Interior Pictures of RTU Blower Section, Power / Control Section, Heat Section, Compressor Section.



Complete / Clear Pictures of All RTU Condenser Coil and Evaporator Coil Surfaces.



All RTU Electric and Heat Utility Piping Through Roof and All Connections / Penetrations at the Unit.



Roof Areas Around RTU Unit Showing the Areas are Clean and Free of Any Debris or Damage Related to the Installation.



Pictures of RTU Unit Mounting to Roof Curb / Adapter Curb Showing Proper Alignment and Sealing.



AIR MOVING INSPECTION

Alignment of RTU Drive Components

Completed

Alignment of RTU Drive Component Photo**Alignment of Blower Pulley Key Flush with End of Blower Shaft**

RTU Belt Tension Adjusted Properly

Completed

RTU Blower Pulleys Tight on Shaft, Bearing Set Screws Tight, Wheel Tight to Shaft.

Completed

RTU Pressure Switch or Transducer Tubing Installed Properly

Completed

RTU Pressure Switch / Transducer Tubing Photo**EXHAUST INSPECTION**

Check Hub for Tightness

Complete

Check Fan Blade for Clearance

Complete

Check for Proper Rotation

Complete

Check for Proper Mounting

Complete

ECONOMIZER INSPECTION

Economizer Type

Standard

CO2 Sensor Installed

Complete

Installed C02 Sensor Photo



Check Single Enthalpy Economizer Setting

Completed

Installed Reheat / Indoor Humidity Sensor Photo showing installed location



RTU BLOWER INFORMATION

RTU Blower Motor Rated HP	3
RTU Blower Motor Rated FLA	9.6
RTU Blower Motor Rated RPM	1750
Check Proper Rotation of RTU Supply Fan	Completed
RTU Blower Motor Controlled by VFD	Yes
RTU Direct Drive Blower Motor	Yes

RTU ELECTRICAL DATA - VOLTAGE

RTU Line Input Voltage 208-230 / 3 / 60

Line Input Voltage	
L1	209
L2	208
L3	208

Nameplate	L1	L2	L3
Supply Fan Motor	9.4	9.6	9.8
Compressor #1	13.2	13.6	13.4
Compressor #2 (if equipped)	13.5	13.7	13.4

	Discharge Pressure	Discharge Temp	Liquid Line Temp Befor LL Drier	Subcooling	Suction Pressure	Suction Temp.	Superheat
Stage 1	248				136		
Stage 2	234				131		

RTU REFRIGERANT SAFETIES

Prove RTU Compressor Rotation (3 phase only) by gauge pressure

Completed

RTU OPERATING MEASUREMENTS - GAS HEATING

Fuel Type: Natural Gas

Check RTU for Gas Leaks

Completed

OPERATIONAL MEASUREMENTS - STAGING CONTROLS

Create a RTU cooling demand at the Thermostat, BAS System or Simplicity PC Verify that cooling/economizer stages are energized. Yes

Create a RTU heating demand at the Thermostat, BAS System or Simplicity PC Verify that heating stages are energized. Yes

FINAL INSPECTION

Run All RTU Gas / Electric Heating Systems at Full Capacity for a minimum of 20 Minutes to Burn Off any impurities on the heating section materials. Place Fire Alarm Panel in Test and Inform Store Management that burning odor may be present for a short time but is normal for new equipment at Start-up. Completed

Verify that all RTU operational control set points have been set to Walgreens desired value Scroll through all setpoints and verify all have been set to Walgreens specifications. Yes

Verify that all RTU option parameters are correct. Scroll through all option parameters and ensure that all installed options are enabled in the software and all others are disabled in the software. Yes

RTU UNIT INFORMATION

RTU Unit Number / Serves Store Area Description: Stock

RTU Make: York

RTU Manufacturer: JCI

RTU Model Number: Zj037n08d2b5bcb2r3

RTU Serial Number: N2e2506745

Heating System: Natural Gas

RTU Unit Name Plate Photo



RTU Walgreens Asset Tag Photo



Scan RTU Walgreens Asset Tag Barcode Number:

WG0000524911

JCI Warranty Registration Completed?

Yes

Installed Temperature Control Serving this Unit:

Honeywell Vision Pro 8000 Thermostats with Remote Zone Sensors

RTU GENERAL INSPECTION

RTU Refrigeration System Checked for Gross Leaks

Completed

RTU Terminal Screws and Wiring Connections Checked for Tightness

Completed

Air Filters Installed Correctly and Clean

Completed

Installed RTU Air Filter Photo



RTU Economizer Hoods Installed in Operating Position

Completed

Installed RTU Economizer Photo



RTU Condensate Drain CostGard System Installed Properly

Completed

RTU Condensate Drain Extended to Nearest Roof Drain

Completed

Installed RTU Condensate Drain Photo



RTU Economizer Damper Linkage Tight

Completed

Completed RTU Economizer Damper Linkage Photo



RTU Gas Heat Vent Hood Installed

Completed

Installed RTU Gas Heat Vent Hood Photo



All RTU Field Power Wiring Complete

Completed

All RTU Field Power Wiring Photo



All RTU Field Control Wiring Complete

Completed

All RTU Field Control Wiring Photo



All RTU Field Natural Gas / Propane Piping Complete

Completed

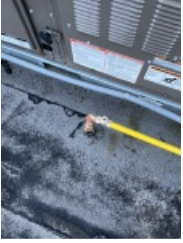
All RTU Field Natural Gas / Propane Piping Photo



RTU Gas Shut-Off Valve in ON Position

Completed

RTU Gas Shut-Off Valve in ON Position Photo



RTU Correctly Labeled on Exterior Using 4 inch x 2 inch Exterior Reflective Labels with RTU # Designation

Completed

RTU Label Photo



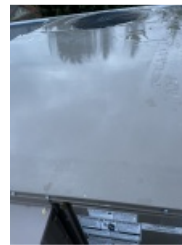
Seismic Adapter Clips Furnished and Installed on RTU

Yes

If Seismic Adapter Clips Furnished and Installed on RTU, take Photo



All 5 Sides of Installed Unit of RTU - Including Top with Condensor Fan Section.



Interior Pictures of RTU Blower Section, Power / Control Section, Heat Section, Compressor Section.



Complete / Clear Pictures of All RTU Condenser Coil and Evaporator Coil Surfaces.



All RTU Electric and Heat Utility Piping Through Roof and All Connections / Penetrations at the Unit.



Roof Areas Around RTU Unit Showing the Areas are Clean and Free of Any Debris or Damage Related to the Installation.



Pictures of RTU Unit Mounting to Roof Curb / Adapter Curb Showing Proper Alignment and Sealing.



AIR MOVING INSPECTION

Alignment of RTU Drive Components

Completed

Alignment of RTU Drive Component Photo



Alignment of Blower Pulley Key Flush with End of Blower Shaft



RTU Belt Tension Adjusted Properly Completed

RTU Blower Pulleys Tight on Shaft, Bearing Set Screws Tight, Wheel Tight to Shaft. Completed

RTU Pressure Switch or Transducer Tubing Installed Properly Completed

RTU Pressure Switch / Transducer Tubing Photo



EXHAUST INSPECTION

Check Hub for Tightness Complete

Check Fan Blade for Clearance Complete

Check for Proper Rotation Complete

Check for Proper Mounting Complete

ECONOMIZER INSPECTION

Economizer Type Standard

C02 Sensor Installed Complete

Installed C02 Sensor Photo



Check Single Enthalpy Economizer Setting Completed

RTU BLOWER INFORMATION

RTU Blower Motor Rated HP 1.5

RTU Blower Motor Rated FLA 5.2

RTU Blower Motor Rated RPM 1725

RTU Blower Motor Controlled by VFD No

RTU Direct Drive Blower Motor Yes

RTU ELECTRICAL DATA - VOLTAGE

RTU Line Input Voltage 208-230 / 3 / 60

Line Input Voltage	
L1	208
L2	207
L3	208

RTU OPERATING MEASUREMENTS - GAS HEATING

Fuel Type: Natural Gas

Check RTU for Gas Leaks

Completed

RTU UNIT INFORMATION

RTU Unit Number / Serves Store Area Description: Pharmacy

RTU Make: York

RTU Manufacturer: JCI

RTU Model Number: Zj037n08d2b5bcb2r3

RTU Serial Number: N2e2506744

Heating System: Natural Gas

RTU Unit Name Plate Photo



RTU Walgreens Asset Tag Photo



Scan RTU Walgreens Asset Tag Barcode Number: WG0000524913

JCI Warranty Registration Completed? Yes

Installed Temperature Control Serving this Unit:

Honeywell Vision Pro 8000 Thermostats with Remote Zone Sensors

RTU GENERAL INSPECTION

RTU Refrigeration System Checked for Gross Leaks Completed

RTU Terminal Screws and Wiring Connections Checked for Tightness Completed

Air Filters Installed Correctly and Clean Completed

Installed RTU Air Filter Photo



RTU Economizer Hoods Installed in Operating Position Completed

Installed RTU Economizer Photo



RTU Condensate Drain CostGard System Installed Properly Completed

RTU Condensate Drain Extended to Nearest Roof Drain Completed

RTU Economizer Damper Linkage Tight Completed

Completed RTU Economizer Damper Linkage Photo



RTU Gas Heat Vent Hood Installed Completed

Installed RTU Gas Heat Vent Hood Photo



All RTU Field Power Wiring Complete Completed

All RTU Field Power Wiring Photo



All RTU Field Control Wiring Complete

Completed

All RTU Field Control Wiring Photo



All RTU Field Natural Gas / Propane Piping Complete

Completed

All RTU Field Natural Gas / Propane Piping Photo



RTU Gas Shut-Off Valve in ON Position

Completed

RTU Gas Shut-Off Valve in ON Position Photo



RTU Correctly Labeled on Exterior Using 4 inch x 2 inch Exterior Reflective Labels with RTU # Designation

Completed

RTU Label Photo



Seismic Adapter Clips Furnished and Installed on RTU

Yes

If Seismic Adapter Clips Furnished and Installed on RTU, take Photo



All 5 Sides of Installed Unit of RTU - Including Top with Condenser Fan Section.



Interior Pictures of RTU Blower Section, Power / Control Section, Heat Section, Compressor Section.



Complete / Clear Pictures of All RTU Condenser Coil and Evaporator Coil Surfaces.



All RTU Electric and Heat Utility Piping Through Roof and All Connections / Penetrations at the Unit.



Roof Areas Around RTU Unit Showing the Areas are Clean and Free of Any Debris or Damage Related to the Installation.



Pictures of RTU Unit Mounting to Roof Curb / Adapter Curb Showing Proper Alignment and Sealing.



AIR MOVING INSPECTION

Alignment of RTU Drive Components

Completed

Alignment of RTU Drive Component Photo



Alignment of Blower Pulley Key Flush with End of Blower Shaft



RTU Belt Tension Adjusted Properly

Completed

RTU Blower Pulleys Tight on Shaft, Bearing Set Screws Tight, Wheel Tight to Shaft.

Completed

RTU Pressure Switch or Transducer Tubing Installed Properly

Completed

RTU Pressure Switch / Transducer Tubing Photo



EXHAUST INSPECTION

Check Hub for Tightness	Complete
Check Fan Blade for Clearance	Complete
Check for Proper Rotation	Complete
Check for Proper Mounting	Complete

ECONOMIZER INSPECTION

Economizer Type	Standard
C02 Sensor Installed	Complete
Check Single Enthalpy Economizer Setting	Completed

RTU BLOWER INFORMATION

RTU Blower Motor Rated HP	1.5
RTU Blower Motor Rated FLA	5.2
RTU Blower Motor Rated RPM	1725
Check Proper Rotation of RTU Supply Fan	Completed
RTU Blower Motor Controlled by VFD	No

RTU ELECTRICAL DATA - VOLTAGE

RTU Line Input Voltage 208-230 / 3 / 60

Line Input Voltage	
L1	209
L2	209
L3	208

Nameplate	L1	L2	L3
Supply Fan Motor	5.3	5	5.2
Compressor #1	9.1	9	9.3

	Discharge Pressure	Discharge Temp	Liquid Line Temp Befor LL Drier	Subcooling	Suction Pressure	Suction Temp.	Superheat
Stage 1	211				120		

RTU REFRIGERANT SAFETIES

Prove RTU Compressor Rotation (3 phase only) by gauge pressure

Completed

RTU OPERATING MEASUREMENTS - GAS HEATING

Fuel Type: Natural Gas

OPERATIONAL MEASUREMENTS - STAGING CONTROLS

Create a RTU cooling demand at the Thermostat, BAS System or Simplicity PC Verify that cooling/economizer stages are energized. Yes

Create a RTU heating demand at the Thermostat, BAS System or Simplicity PC Verify that heating stages are energized. Yes

FINAL INSPECTION

Run All RTU Gas / Electric Heating Systems at Full Capacity for a minimum of 20 Minutes to Burn Off any impurities on the heating section materials. Place Fire Alarm Panel in Test and Inform Store Management that burning odor may be present for a short time but is normal for new equipment at Start-up.	Completed
Verify that all RTU operational control set points have been set to Walgreens desired value Scroll through all setpoints and verify all have been set to Walgreens specifications.	Yes
Verify that all RTU option parameters are correct. Scroll through all option parameters and ensure that all installed options are enabled in the software and all others are disabled in the software.	Yes