

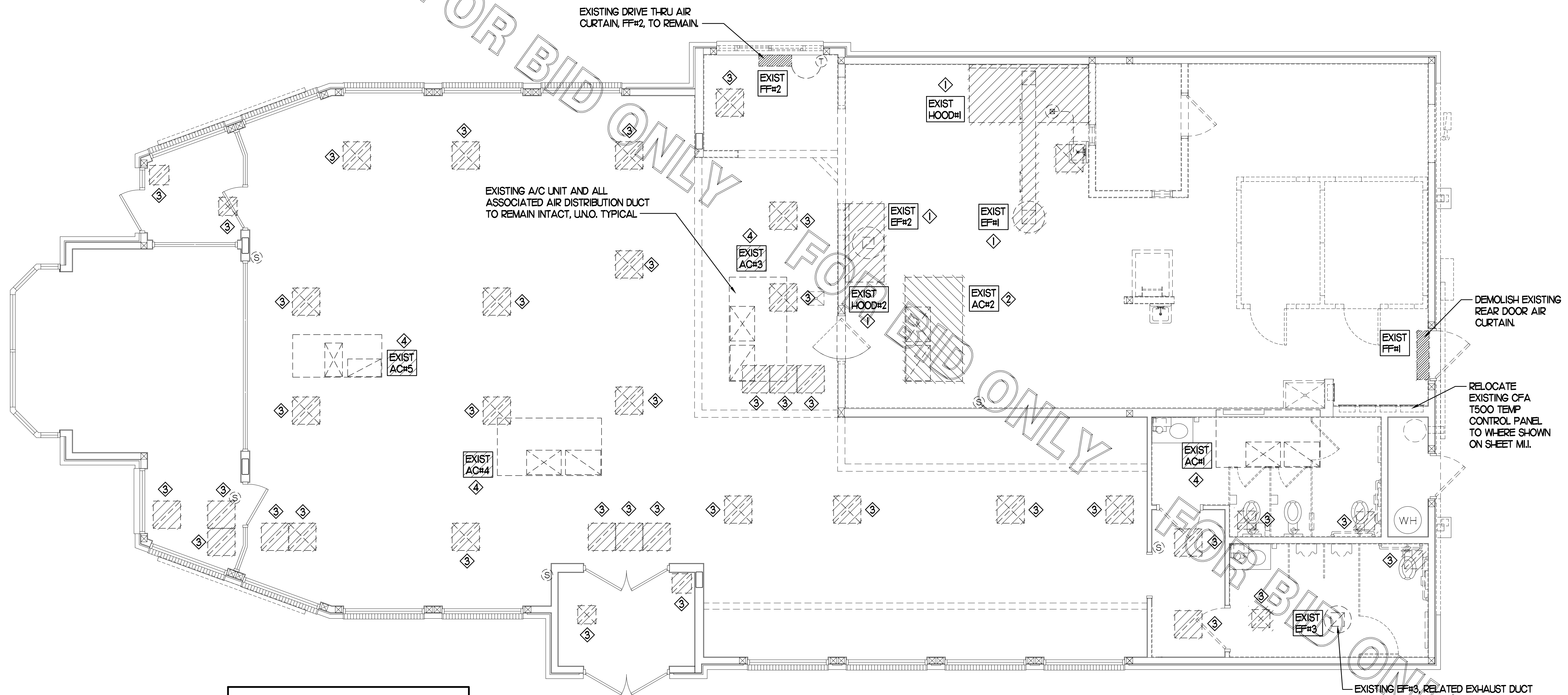
**DEMOLITION NOTES**

- ① CONTRACTOR IS RESPONSIBLE FOR OBTAINING ALL NECESSARY PERMITS AND PAYING ALL APPLICABLE FEES.
- ② DISPOSAL OF EQUIPMENT AND MATERIALS REQUIRED TO BE REMOVED SHALL BE THE RESPONSIBILITY OF THE CONTRACTOR PERFORMING THE WORK.
- ③ DE-ENERGIZE ALL ELECTRICAL CIRCUITS RELATED TO EQUIPMENT THAT WILL BE MOVED OR REMOVED PRIOR TO STARTING WORK. DE-ENERGIZED CIRCUITS SHALL BE PROTECTED WITH LOCKING DEVICES USING APPROPRIATE WARNING LABELS.
- ④ MECHANICAL CONTRACTOR SHALL BE RESPONSIBLE FOR PATCHING ROOF AFTER REMOVAL OF EXISTING MECHANICAL EQUIPMENT. SEE ARCHITECTURAL DRAWINGS FOR ROOF PATCHING REQUIREMENTS.
- ⑤ EXCEPT WHERE NOTED, EXISTING REMOTE TEMPERATURE &/OR HUMIDITY SENSORS TO REMAIN. IF DURING RENOVATION PURPOSES CONTROLS SHALL BE TAKEN DOWN. MECHANICAL CONTRACTOR SHALL BE RESPONSIBLE FOR REINSTALLING AND TO PROVIDE ANY ADDITIONAL WIRING NEEDED. VERIFY EXISTING UNIT CONTROLS ARE IN GOOD WORKING ORDER. IF NOT, CONTACT CHICK-FIL-A CONSTRUCTION MANAGER.
- ⑥ MECHANICAL CONTRACTOR SHALL REPLACE FILTERS FOR ALL RTUs AT END OF PROJECT AND PRIOR TO REOPENING. MC TO PROVIDE PROPOSAL TO FACILITIES MANAGER, CONSTRUCTION MANAGER, AND OPERATOR TO CORRECT EXISTING RTU PUNCH ITEMS IDENTIFIED BY HALTON.
- ⑦ CONTRACTOR SHALL INDICATE SALVAGE VALUE IN BID FOR ROOFTOP UNITS BEING REPLACED.

**DEMOLITION KEY NOTES**

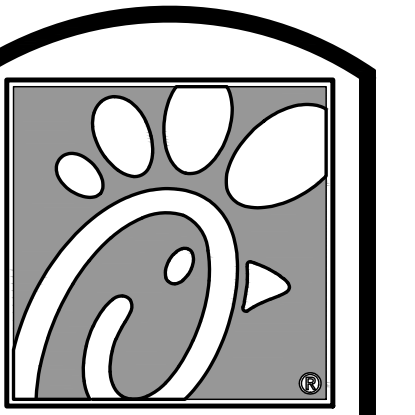
- ① DEMOLISH EXISTING KITCHEN HOOD, CAPTURE JET FAN W/ DUCT & DIFFUSER, ALL ASSOCIATED GREASE DUCT, EXHAUST FAN, AND ITS ASSOCIATED ROOF CURB. COVER ROOF OPENING WEATHER-TIGHT FOR RE-USE. SEE SHEET M.I FOR FURTHER INFORMATION.
- ② DEMOLISH EXISTING KITCHEN A/C UNIT, AC#2, SUPPLY/RETURN AIR DROPS, ALL ASSOCIATED SUPPLY/RETURN DUCT & AIR DEVICES (UNLESS NOTED OTHERWISE), AND ITS ASSOCIATED ROOF CURB. DEMOLISH EXISTING UNIT CONTROLS (REMOTE TEMP SENSOR, REMOTE HUMIDITY SENSOR, AND/OR SMOKE DETECTOR TEST/RESET STATION). PATCH AND REPAIR ROOF TO MATCH SURROUNDING CONSTRUCTION.
- ③ DETACH AND DEMOLISH EXISTING AIR DEVICE. SECURE DUCT ABOVE CEILING GRID FOR RE-CONNECTION. SEE SHEET M.I FOR NEW CONNECTION.
- ④ EXISTING RTU TO BE REPLACED WITH NEW PER SHEET M.I. EXISTING TEMPERATURE CONTROLS (REMOTE TEMP SENSOR & THERMOSTAT TO REMAIN FOR RE-USE. EXISTING ROOF CURB TO REMAIN FOR INSTALLATION OF NEW ROOFTOP UNIT.

DEMOLITION LEGEND	
	EXISTING EQUIPMENT, DUCT, AIR DEVICE ETC. TO REMAIN INTACT
	EQUIPMENT, DUCT, AIR DEVICE ETC. TO BE DEMOLISHED



EXISTING CONDITIONS SHOWN ARE FROM PREVIOUS DRAWINGS. MECHANICAL CONTRACTOR SHALL FIELD VERIFY EXACT LOCATIONS OF ALL DUCT AND AIR DEVICES. IF MAJOR DIFFERENCES OCCUR IN FIELD, CONTACT CHICK-FIL-A CONSTRUCTION MANAGER.

**MECHANICAL DEMOLITION FLOOR PLAN**  
SCALE: 1/4"=1'-0"



5200 Buffington Rd.  
Atlanta Georgia,  
30349-2998

Revisions:

Mark	Date	By
△		
△		
△		



**Kurzynske & Associates**  
CONSULTING ENGINEERS  
2900 Lebanon Pike, Ste. 201  
Nashville, Tennessee 37214  
Telephone: (615) 255-5203  
Fax: (615) 255-5207  
Email: mail@kurzynske.com

STORE  
WARRINGTON  
CROSSING FSR #1387  
160 EASTON ROAD,  
WARRINGTON, PA  
18976

SHEET TITLE  
MECHANICAL  
DEMO PLAN

VERSION : S97-136  
ISSUE DATE : 04.2017

Job No. : 18157.HF.R  
Store : #1387  
Date : 10.16.18  
Drawn By : BM  
Checked By : MK

Sheet  
**MO.I**

**TOTAL AIR BALANCE SCHEDULE**

EQUIPMENT MARK	AC#1 (NEW)	AC#2 (NEW)	AC#3 (NEW)	AC#4 (NEW)	AC#5 (NEW)	EF#1 (NEW)	EF#2 (NEW)	EF#3 (EXIST)	EF#4 (NEW)	TOTAL
SERVES	SIDE DINING	KITCHEN	MAIN DINING	MAIN DINING	PLAY AREA	HOOD#1	HOOD#2	REST-ROOM	HOOD#3	
SUPPLY AIR CFM	3,400	8,000	3,750	2,895	2,000					20,045
RETURN AIR CFM	2,650	6,000	3,205	2,140	1,700					15,695
OUTSIDE AIR CFM	750	2,000	545	755	300					+4,350
EXHAUST CFM						1,700	701	530	804	-3,589
PRESSURIZATION										+761
REMARKS	ADJUST AND VERIFY BALANCE OF ALL HVAC EQUIPMENT IS AS SHOWN IN ORDER TO MAINTAIN BUILDING AIR BALANCE. GC TO PRESENT A COPY OF THE TAB REPORT TO THE TOWNSHIP INSPECTOR PRIOR TO FINAL INSPECTION.									

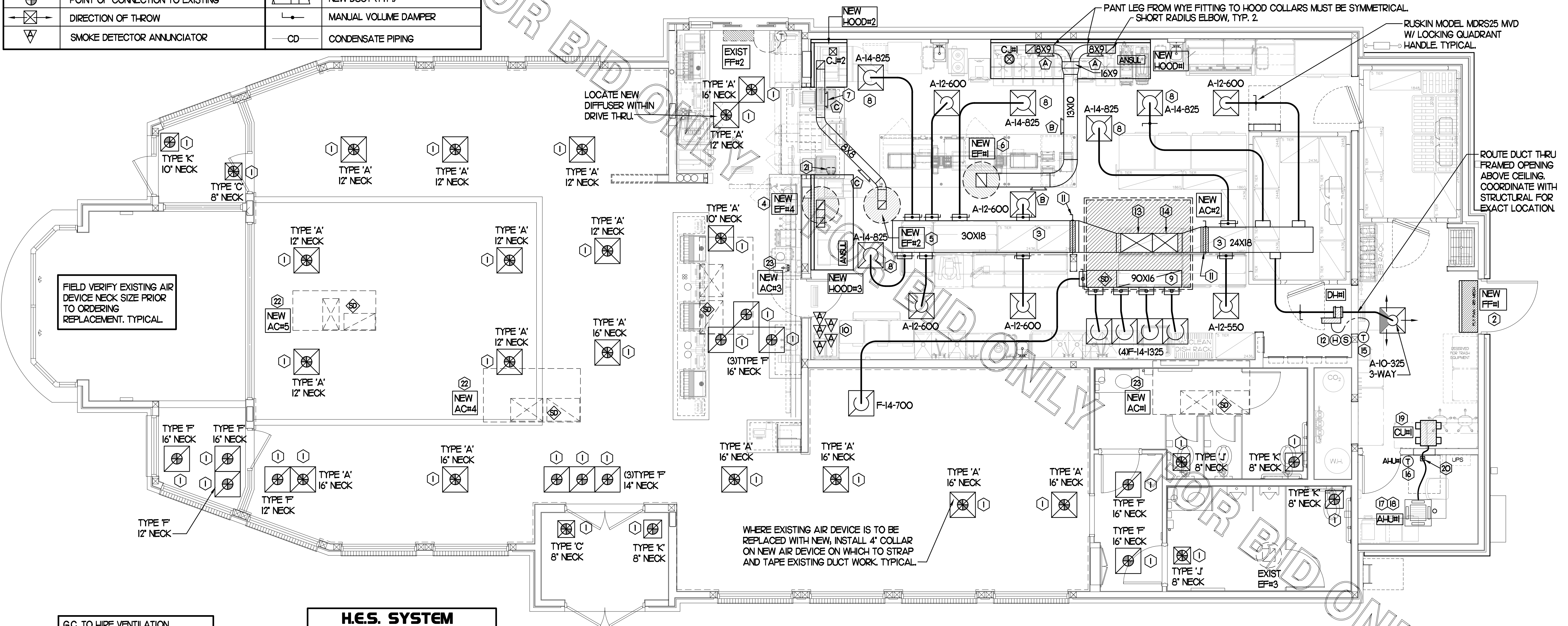
**LEGEND**

A-12-400	TYPE - NECK SIZE - CFM	KEY NOTE REFERENCE
	SPIN-IN FITTING, MVD, NO SCOOP	EXISTING START COLLAR
	SPIN-IN HARD $\phi$ FLEXIBLE $\phi$ DIFFUSER	EXISTING RUNOUT TO REMAIN
	REMOTE TEMPERATURE SENSOR	EXISTING RETURN/EXHAUST (TYP.)
	REMOTE HUMIDITY SENSOR	EXISTING SUPPLY DIFFUSER (TYP.)
	SMOKE DETECTOR	EXISTING DUCT (TYP.)
	GREASE ACCESS DOOR TYPE	NEW RETURN/EXHAUST, UNO. (TYP.)
	POINT OF CONNECTION TO EXISTING	NEW SUPPLY DIFFUSER, UNO. (TYP.)
	DIRECTION OF THROW	NEW DUCT (TYP.)
	SMOKE DETECTOR ANNUNCIATOR	MANUAL VOLUME DAMPER
	CONDENSATE PIPING	CONDENSATE PIPING

**KEY NOTES (THIS SHEET ONLY)**

- CONNECT NEW AIR DEVICE TO EXISTING TAKE-OFF. IF NECESSARY, MECHANICAL CONTRACTOR SHALL PROVIDE AND INSTALL NEW DUCT IN ORDER TO MAKE CONNECTION TO AIR DEVICE IN NEW LOCATION. ANY FLEX DUCT USED SHALL NOT BE LONGER THAN 4'-0". SEE DETAIL 1/M3.1. COORDINATE AIR DEVICE LOCATIONS WITH ARCHITECTURAL REFLECTED CEILING PLAN.
- AIR CURTAIN MOUNTED OVER DOOR HEADER AT 7'-2" AFF TO BOTTOM OF UNIT. PROVIDE BLOCKING IN WALL BEHIND AIR CURTAIN. USE FACTORY PRE-PUNCHED MOUNTING HOLES ON BACK SIDE OF AIR CURTAIN ONLY. ATTACH AIR CURTAIN TO WALL USING 3/8" LAG BOLTS, LENGTH AS REQUIRED TO FULLY PENETRATE BLOCKING. LOCATE MAGNETIC CONTACT TYPE MICROSWITCH IN DOOR FRAME ON STRIKE SIDE.
- BRANCH TAKE-OFFS SHALL NOT BE LOCATED CLOSER THAN 3'-0" FROM ANY ELBOW INCLUDING THE SUPPLY AIR DROP FROM CURB.
- ROUTE GREASE DUCT FROM FULL SIZE OF HOOD COLLAR UP THROUGH EXISTING ROOF OPENING TO NEW EXHAUST FAN. OFFSET THRU ROOF SHALL NOT BE GREATER THAN 45 DEGREES.
- LOCATE A MINIMUM OF 10 FT FROM PARAPETS AND/OR OA INTAKES. SEE DETAIL 3/M3-1 FOR ORIENTATION OF HINGE SIDE OF FAN ON CURB.
- ROUTE GREASE DUCT AS SHOWN UP THROUGH EXISTING ROOF OPENING TO NEW EXHAUST FAN.
- GREASE ACCESS DOOR. SEE GREASE ACCESS DOOR SCHEDULE ON SHEET M2.1 FOR SIZING AND CONSTRUCTION. TYPICAL.
- MECHANICAL CONTRACTOR TO ADJUST PATTERN DEFLECTORS TO THROW STRAIGHT DOWN.
- TRANSITION IN VERTICAL DROP FROM FULL SIZE OF CURB OPENING TO SIZE SHOWN. TRANSITION WITHIN CURB WHERE REQUIRED TO AVOID STRUCTURE. NO TURNING VANES IN ELBOW. FOR DROPS WITH NO HORIZONTAL OFFSET, EXTEND DROP BELOW STRUCTURE TO ACCOMMODATE START COLLARS. TERMINATE DROP MIN. 0'-6" ABOVE CEILING.
- REPLACE EXISTING SMOKE DETECTOR ANNUNCIATOR FOR ALL NEW RTUS. MC SHALL PURCHASE SMOKE DETECTOR ANNUNCIATORS FOR ALL NEW RTUS FROM SUNCOAST ENVIRONMENTAL CONTROLS.
- PROVIDE RUSKIN CD35 MANUAL BALANCING DAMPER WITH 6" MAXIMUM BLADE WIDTH, OPPOSED BLADE ACTION, LOCKING QUADRANT HANDLE WITH 2" STANDOFF AND 16 GA GALVANIZED BLADE AND FRAME CONSTRUCTION.
- NEW NETWORK REMOTE TEMP SENSOR PROVIDED BY SUNCOAST AND INSTALLED BY MC. MECHANICAL CONTRACTOR SHALL BE RESPONSIBLE FOR ALL NEW WIRING AND INSTALLATION. ROUTE WIRING BACK TO TSTAT LOCATED IN SUNCOAST TEMP CONTROL PANEL. MOUNT SENSOR AT 5'-8" AFF AND COORDINATE FINAL MOUNTING LOCATION WITH KITCHEN EQUIPMENT. CONTACT SUNCOAST ENVIRONMENTAL CONTROLS AT 1-877-544-6679 TO PURCHASE A NEW REMOTE TEMPERATURE SENSOR FOR EACH RTU BEING REPLACED. MOUNT LENNOX HUMIDITY SENSOR DIRECTLY ABOVE REMOTE TEMP SENSOR AND ROUTE WIRING TO UNIT ON ROOF.

- 18X30 VERTICAL DROP. PROVIDE TURNING VANES IN ELBOW. ELBOW TO BE PARTIALLY LOCATED WITHIN STRUCTURE. BOTTOM OF ELBOW TO BE AT SAME ELEVATION AS BOTTOM OF 30X18 SUPPLY MAIN. 30X18 SUPPLY MAIN TO BE LOCATED ENTIRELY BELOW JOISTS. HOLD 30X18 SUPPLY MAIN AS HIGH AS POSSIBLE DUE TO LIMITED CLEARANCE.
- 18X24 VERTICAL DROP. PROVIDE TURNING VANES IN ELBOW. 24X18 SUPPLY MAIN TO BE LOCATED ENTIRELY BELOW JOISTS. HOLD 24X18 SUPPLY MAIN AS HIGH AS POSSIBLE DUE TO LIMITED CLEARANCE.
- MOUNT ROOM TSTAT FOR DUCT HEATER AT 5'-0" AFF.
- MOUNTED WIRED REMOTE CONTROLLER FOR AHU ON WALL AT 5'-0" AFF. ROUTE WIRING PER MFG'S IOM.
- LOCATE AHU IN LAY-IN CEILING. ROUTE REFRIGERANT PIPING ABOVE CEILING AND UP THRU ROOF TO CONDENSING UNIT. SEE DETAIL ON SHEET M3.1 FOR FURTHER INFORMATION.
- ROUTE 3/4" MIN. CONDENSATE FROM AHU TO TERMINATE INDIRECTLY 0'-2" MIN. ABOVE DRAIN AT EXISTING WATER HEATER. CONDENSATE PIPING SHALL BE TYPE K COPPER WITH 1/2" ARMAFLEX INSULATION. CONDENSATE MUST SLOPE MIN. 1/8" PER FOOT TO TERMINATION POINT.
- SET CONDENSING UNIT ON ROOF USING TWO CURBS PLUS CPES-1 EQUIPMENT CURBS. SECURE CONDENSING UNIT TO CURBS ARRANGED IN PARALLEL. SET LONG SIDE OF CURB PARALLEL TO ROOF SLOPE. FLASH INTO ROOF BY GC. FINAL LOCATION TO BE DETERMINED IN THE FIELD. ALL MAINTENANCE CLEARANCES OF NEW AND EXISTING EQUIPMENT SHALL BE MAINTAINED.
- ROUTE REFRIGERANT LINE SET THRU ROOF USING PREFAB PIPE CURB.
- C-#3 MOUNTED INSIDE CABINERY SERVING SCJ PLENUM, SEE DETAIL 2/M2-1.
- INSTALL NEW RTU ONTO EXISTING CURB WITH USE OF ADAPTER CURB. RE-CONNECT TO EXISTING REMOTE TEMP SENSOR. ADAPTOR CURB TO BE PROVIDED BY LENNOX AS PART OF THE TOTAL EQUIPMENT PACKAGE. REFER TO GAS FIRED PACKAGED ROOFTOP UNIT SCHEDULE ON SHEET M3.1.
- INSTALL NEW RTU ONTO EXISTING CURB WITH USE OF LENNOX RETURN AIR ADAPTOR PLATE. RE-CONNECT TO EXISTING REMOTE TEMP SENSOR. REFER TO GAS FIRED PACKAGED ROOFTOP UNIT SCHEDULE ON SHEET M3.1.

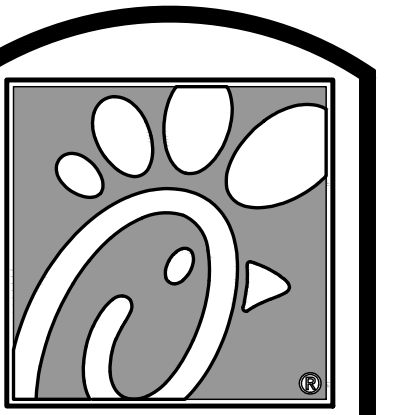


G.C. TO HIRE VENTILATION CLEANING CONTRACTOR CERTIFIED BY NATIONAL AIR DUCT CLEANERS ASSOCIATION (NADCA) TO CLEAN ALL EXISTING DUCTWORK THAT IS TO REMAIN.

**H.E.S. SYSTEM**  
MECHANICAL CONTRACTOR TO PROVIDE AND INSTALL SUNCOAST H.E.S. SYSTEM FOR ALL NEW HOODS. SEE HOOD FAN/EQUIPMENT INTERLOCK WIRING DIAGRAM ON SHEET M4.1 FOR MORE INFORMATION.

**SHEET NOTES**

- DUCT SIZES SERVING DIFFUSERS AND GRILLES ARE SAME SIZE AS DIFFUSER OR GRILLE NECK UNLESS NOTED OTHERWISE.
- REFER TO ELEVATIONS ON M2.1 AND HOOD DETAILS ON M4.1 FOR CAPTURE-JET FANS DUCTING REQUIREMENTS.
- HARDPIPE SHALL BE USED FOR ALL TAKE-OFFS EXCEPT WHERE ALLOWED BY DETAIL 1/M3.1. USE OF FLEXIBLE DUCT SHALL BE LIMITED TO THOSE SITUATIONS WHERE NO OTHER MEANS TO ACCOMPLISH ROUTING IS POSSIBLE.
- COORDINATE NEW WORK WITH EXISTING CONDUITS, STRUCTURE AND PIPING. FIELD VERIFY EXISTING CONDITIONS PRIOR TO COMMENCING WORK. CONTRACTOR TO NOTIFY DESIGN TEAM WITHOUT DELAY IF ACTUAL LOCATION OF EXISTING MECHANICAL EQUIPMENT DOES NOT MATCH FLOOR PLAN.
- MECHANICAL CONTRACTOR SHALL BALANCE HVAC SYSTEM AS SHOWN ON THIS PLAN & IN SCHEDULES ON SHEET M3.1. IF AIRFLOWS DIFFER BY MORE THAN 5%, CONTACT CFA CONSTRUCTION MANAGER. TEST AND BALANCE REPORT SHALL BE DONE PRIOR TO STORE TURNOVER AND SUBMITTED TO CFA'S CONSTRUCTION MANAGER.

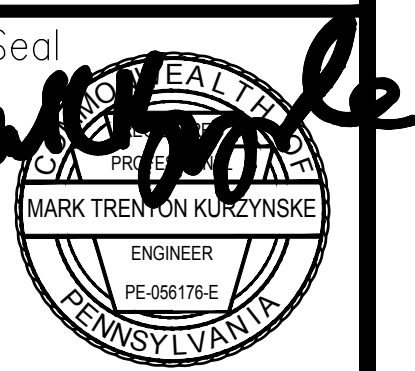


5200 Buffington Rd.  
Atlanta Georgia,  
30349-2998

Revisions:  
Mark Date By  
12/3/18  
PERMIT REVIEW COMMENTS

Mark Date By  
12/3/18

Mark Date By  
12/3/18



**Kurzynski & Associates**  
CONSULTING ENGINEERS  
2900 Lebanon Pike, Ste. 201  
Nashville, Tennessee 37214  
Telephone: (615) 255-5203  
Fax: (615) 255-5207  
Email: mail@kurzynski.com

STORE  
WARRINGTON  
CROSSING FSR #1387  
160 EASTON ROAD,  
WARRINGTON, PA  
18976

SHEET TITLE  
MECHANICAL  
FLOOR PLAN

VERSION S97-136  
ISSUE DATE 04.2017

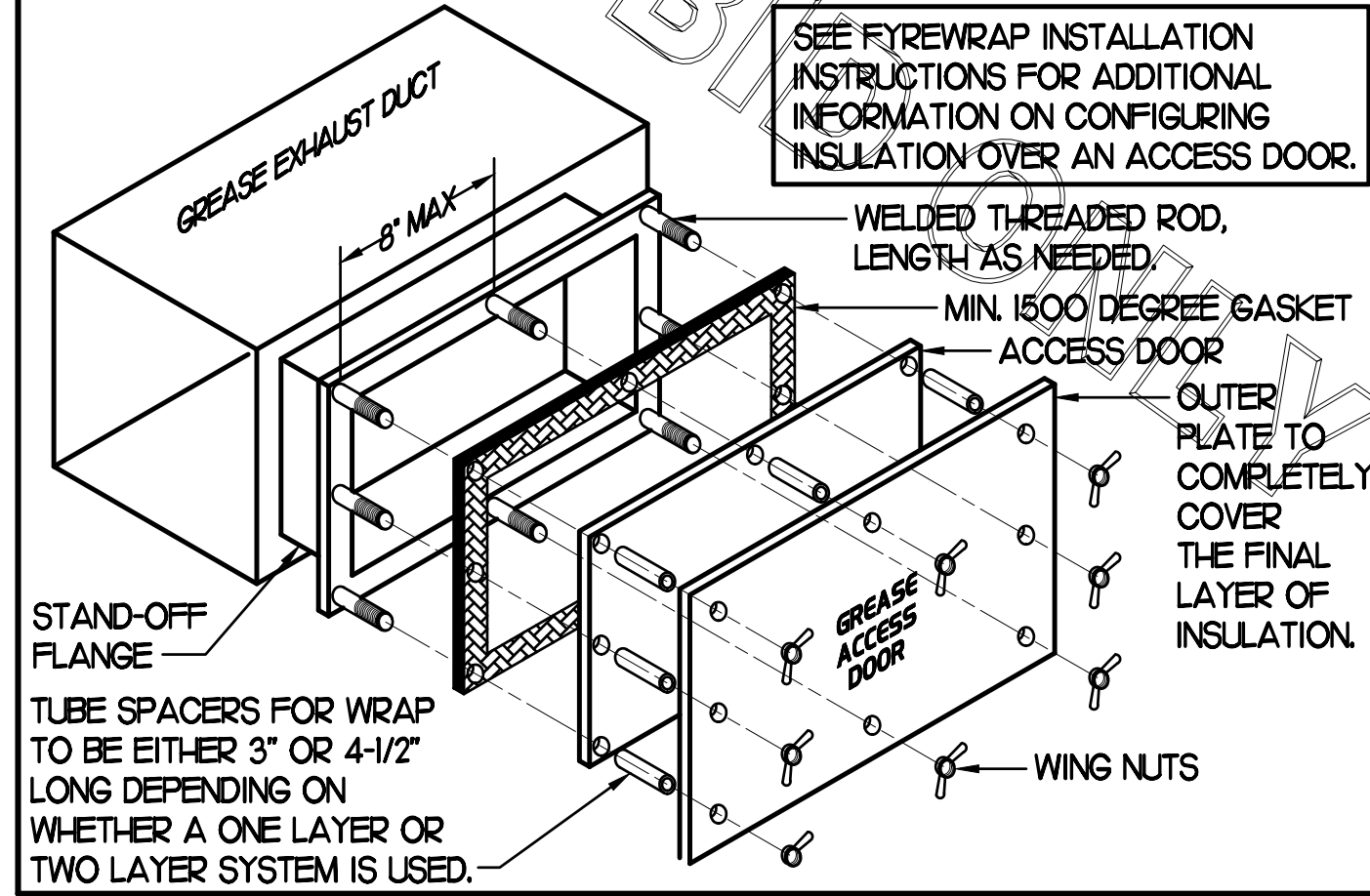
Job No. : 18157.HF.R  
Store : #1387  
Date : 10.16.18  
Drawn By : BM  
Checked By : MK

MI.I

### GREASE ACCESS DOOR SCHEDULE

MARK	OPENING SIZE	DOOR SIZE	REMARKS
A	6.5H X 14W	8.5H X 16W	I
B	7.5H X 14W	9.5H X 16W	I
C	5.5H X 14W	7.5H X 16W	I

I. ACCESS DOORS SHALL BE UL 1978 LISTED OR FIELD FABRICATED, REQUIRE NO TOOLS FOR REMOVAL AND MEET THE REQUIREMENTS OF THE CURRENT EDITION OF THE IMC. ACCESS DOOR ASSEMBLY SHALL BE WELDED IN PLACE TO THE GREASE EXHAUST DUCT AND THE ACCESS DOOR SHALL BE SECURED WITH THUMB SCREWS. ACCESS DOORS SHALL BE SEALED WITH A MINIMUM 1500 DEGREE GASKET MATERIAL EQUIVALENT TO THAT MANUFACTURED BY BRETON INDUSTRIES, INC (800) 382-2491.



### KITCHEN HOOD SYSTEMS NOTES

- CHICK-FIL-A MAINTAINS A NATIONAL ACCOUNT WITH HALTON CO. FOR THE HOODS. CHICK-FIL-A WILL PURCHASE AND PROVIDE THE HOODS FOR INSTALLATION BY THE MECHANICAL CONTRACTOR. THE MECHANICAL CONTRACTOR SHALL BE RESPONSIBLE FOR RECEIVING THE HOODS. CONTACT HALTON CO. AT 270-237-5600 FOR MORE INFO.
- THE FIRE SUPPRESSION SYSTEM SHALL CONSIST OF A COMPLETE WET ANSUL SYSTEM FURNISHED BY HALTON. THE HOOD SHALL BE FURNISHED PRE-PIPED BY HALTON.
- THE R-102 ANSUL FIRE SUPPRESSION SYSTEM EXTERNAL TO THE HOODS SHALL BE INSTALLED IN ACCORDANCE WITH HOOD MANUFACTURER'S SHOP DRAWINGS BY AN AUTHORIZED ANSUL SYSTEM INSTALLER SELECTED AND HIRED BY HALTON. COST FOR ANSUL INSTALLATION INCLUDED IN PRICE OF HOODS TO CFA.
- HOOD EXHAUST DUCTWORK SHALL BE 16 GA. BLACK STEEL WITH CONTINUOUS LIQUID TIGHT WELD OF JOINTS & SEAMS.
- TURNS IN GREASE EXHAUST DUCTWORK SHALL BE LONG RADIUS TYPE, WITH A CENTERLINE RADIUS R-3W/2 UNO. NO EXCEPTIONS ALLOWED. NO MITERED FITTINGS ALLOWED.
- ALL STAINLESS STEEL CLOSURE PANELS SHALL BE SUPPLIED BY HOOD MANUFACTURER AND INSTALLED BY THE MECHANICAL CONTRACTOR ACCORDING TO MANUFACTURER'S RECOMMENDATIONS.
- SLOPE ALL GREASE EXHAUST DUCT BACK TO HOOD AT 1/4" PER FOOT OF RUN.
- WRAP NEW GREASE DUCT WITH UNIFRAX FYREWAP. INSULATION ON ACCESS DOORS SHALL BE INSTALLED ACCORDING TO MANUFACTURER'S INSTALLATION RECOMMENDATIONS. UNIFRAX FYREWAP PRODUCT USED SHALL MEET LOCAL CODE REQUIREMENTS.
- SUPPORT HOODS WITH THREADED ROD AT EACH FACTORY SUPPORT POINT. EACH SUPPORT POINT MUST SUPPORT THE HOOD WEIGHT EQUALLY. ATTACH TO STRUCTURE AS DETAILED ON STRUCTURAL DRAWINGS. ATTACH HOOD TO WALL AT 16" INTERVALS ALONG FULL LENGTH OF HOOD ON TOP AND BOTTOM. ATTACHMENT TO WALL REQUIRES FIELD DRILLING OF SUPPORT ANGLE AT BACK OF HOODS. EACH WALL ATTACHMENT POINT MUST OCCUR AT A WALL STUD. ATTACHMENT HARDWARE TO BE #12-24 HEX HEAD SHEET METAL SCREW EQUAL TO TEXTRON SDS EDT265, LENGTH AS REQUIRED TO FULLY PENETRATE THE STUD.
- MECHANICAL CONTRACTOR TO PROVIDE AND INSTALL SUNCOAST HES SYSTEM FOR ALL NEW HOODS. SEE HOOD FAN/EQUIPMENT INTERLOCK WIRING DIAGRAM ON SHEET M4.1 FOR MORE INFORMATION.

### HOOD SCHEDULE

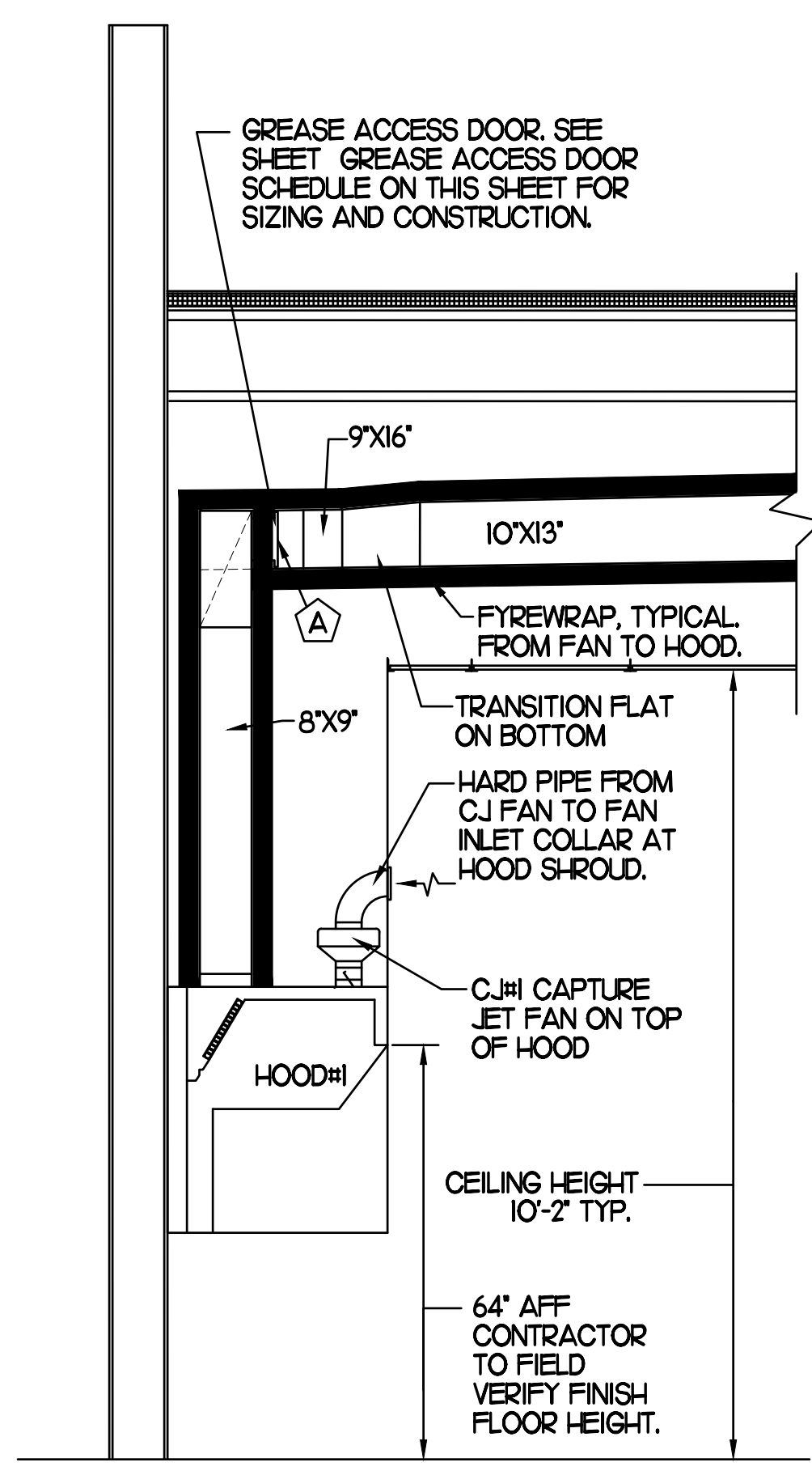
MARK	EXHAUST CFM	SP * TAB PORT	CAPTURE JET CFM & SP.	TYPE	COLLAR SIZE	WIDTH	DEPTH	HEIGHT	MANUFACTURER	MODEL	REMARKS
HOOD#1	1700	0.1"	113 * 0.30"	BACK SHELF	Ø 8"X9"	15"	37"	38"	HALTON	KVL-2	1,3,4,6,9,12,16,18,22
HOOD#2	701	0.26"	30 * 0.29"	BACK SHELF	8"X8"	45"	34"	38"	HALTON	KVL-C	1,2,4,7,8,9,10,12,15,17,18,21
HOOD#3	804	0.09"	68 * 0.28"	CANOPY	9"X8"	90"	40"	48"	HALTON	KVM	1,3,4,5,7,11,13,14,15,16,18,20,21

NOTES: DIMENSIONS OF HOODS INCLUDE BACK AND SIDE SPACERS (HEIGHT DOES NOT INCLUDE CLOSURE PANELS).

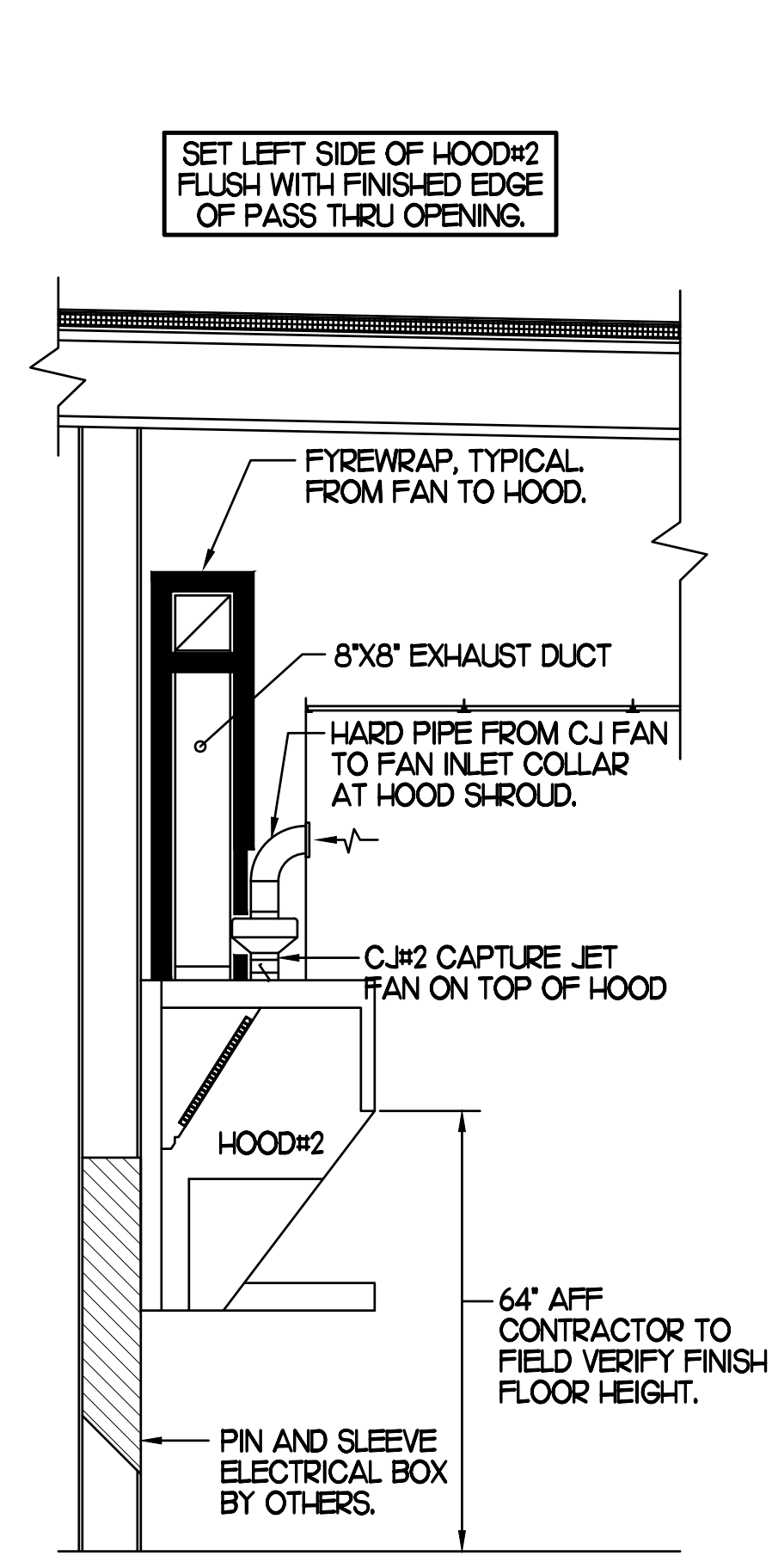
- REMARKS:
- STAINLESS STEEL CONSTRUCTION.
  - PROVIDE FULL HEIGHT SS CLOSURE PANEL WITH ACCESS PANEL IN FRONT LARGE ENOUGH TO REMOVE CAPTURE JET FAN.
  - PROVIDE FULL HEIGHT SS CLOSURE PANEL WITH ACCESS PANEL IN FRONT LARGE ENOUGH TO SERVICE ANSUL COMPONENTS AND TO REMOVE THE CAPTURE JET FAN.
  - PROVIDE PRE-PIPED ANSUL R-102 WET FIRE EXTINGUISHING SYSTEM.
  - ANSUL CABINET AND COMPONENTS ABOVE HOOD ON LEFT SIDE.
  - PROVIDE 3" BACK SPACER WITH 1" THICK INSULATION.
  - PROVIDE 3" CUSTOM BACK SPACER TO ACCOMMODATE PIN AND SLEEVE ELECTRICAL BOX. ZERO CLEARANCE TO COMBUSTIBLE BACK SPACER.
  - PROVIDE 3" RIGHT SIDE SPACER WITH 1" THICK INSULATION.
  - PROVIDE NOTCHED LEFT END SIDE PANEL.
  - PROVIDE 3"X3" HORIZONTAL AND VERTICAL TRIM ANGLE FOR RIGHT SIDE OF HOOD TO FINISH OFF GAP AT WALL.
  - PROVIDE SIDE SHIELD ON LEFT SIDE.
  - PROVIDE TOP PLENUM CAPTURE JET FAN, SPEED CONTROLLER AND COLLAR.
  - PROVIDE COUNTER MOUNTED SIDE CAPTURE JET PLENUM ASSEMBLY AND FAN ON RIGHT SIDE OF HOOD.
  - PROVIDE FACTORY INSTALLED CAPTURE JET FAN IN PLENUM.
  - PROVIDE CAPTURE JET AIR INLET AND COLLAR AT FRONT OF CLOSURE PANEL.
  - PROVIDE PIN AND SLEEVE ELECTRICAL BOX (SINGLE CONNECTION). SEE ARCHITECTURAL AND ELECTRICAL DRAWINGS FOR ADDITIONAL INFORMATION.
  - PROVIDE PIN AND SLEEVE ELECTRICAL BOX (DOUBLE CONNECTION). SEE ARCHITECTURAL AND ELECTRICAL DRAWINGS FOR ADDITIONAL INFORMATION.
  - PROVIDE EQUIPMENT ID. LABELS LOCATED ON FRONT LEADING EDGE OF HOOD.
  - PROVIDE WITH ADJUSTING TRIM ANGLES.
  - PROVIDE FACTORY WALL MOUNTING ANGLE AT TOP OF HOOD.
  - PROVIDE NOTCHED RIGHT END SIDE PANEL.
  - PROVIDE FULL RIGHT END SIDE PANEL.

**GREASE EXHAUST DUCT CLEARANCE NOTE:**  
CLEARANCES ABOVE CEILING ARE TIGHT. MECHANICAL CONTRACTOR TO FIELD VERIFY EXACT ROUTING AND CLEARANCES PRIOR TO FABRICATING GREASE EXHAUST DUCT.

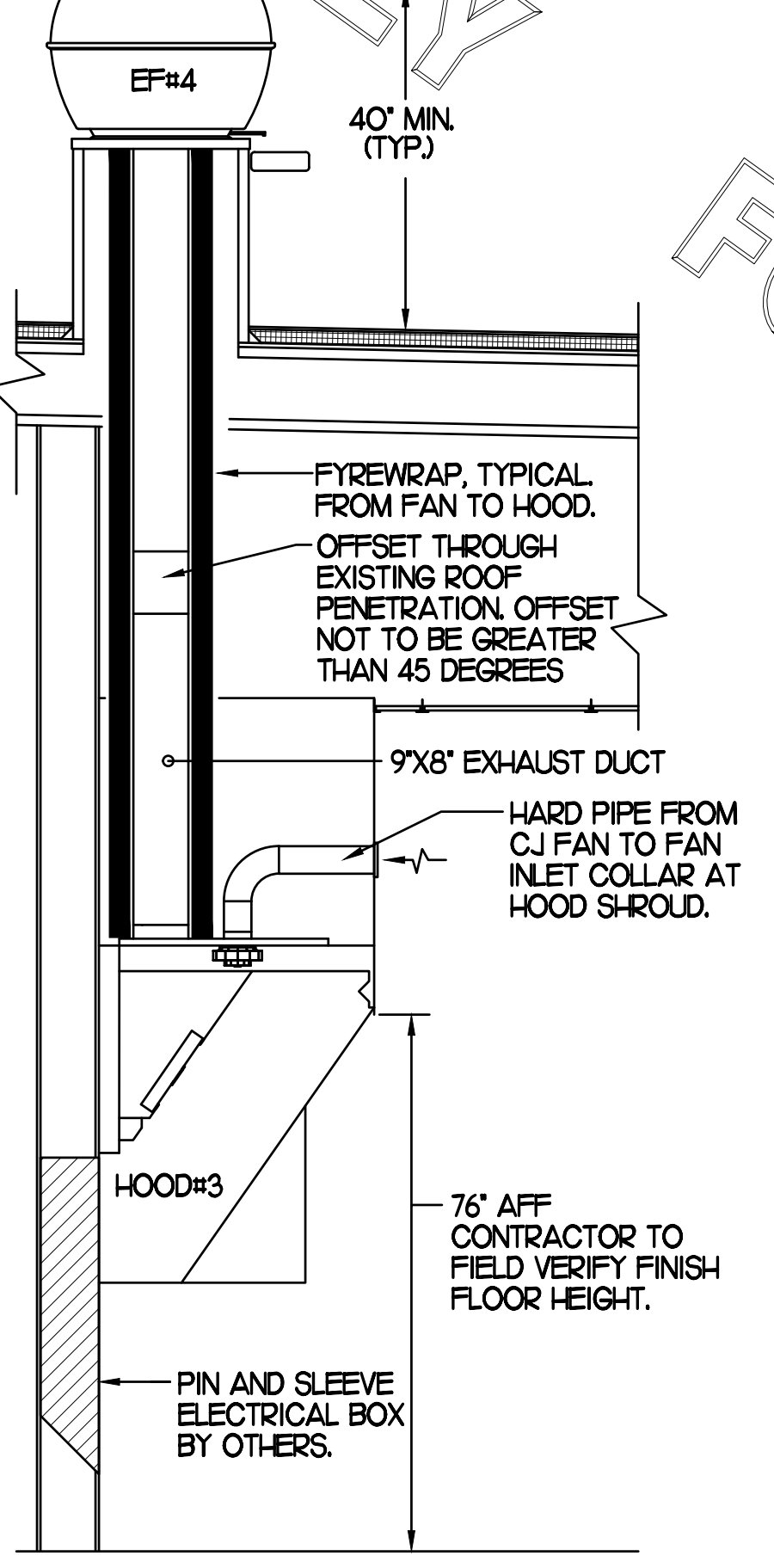
**CLEANOUT DOOR NOTE:**  
DUCT WRAP SHALL BE APPLIED TO THE CLEANOUT DOOR PER THE WRAP MFR'S INSTALLATION INSTRUCTIONS, NO EXCEPTIONS. ALSO, THE CLEANOUT DOOR MUST BE REMOVABLE WITHOUT TOOLS AND MUST BE CLEARLY AND PERMANENTLY LABELED.



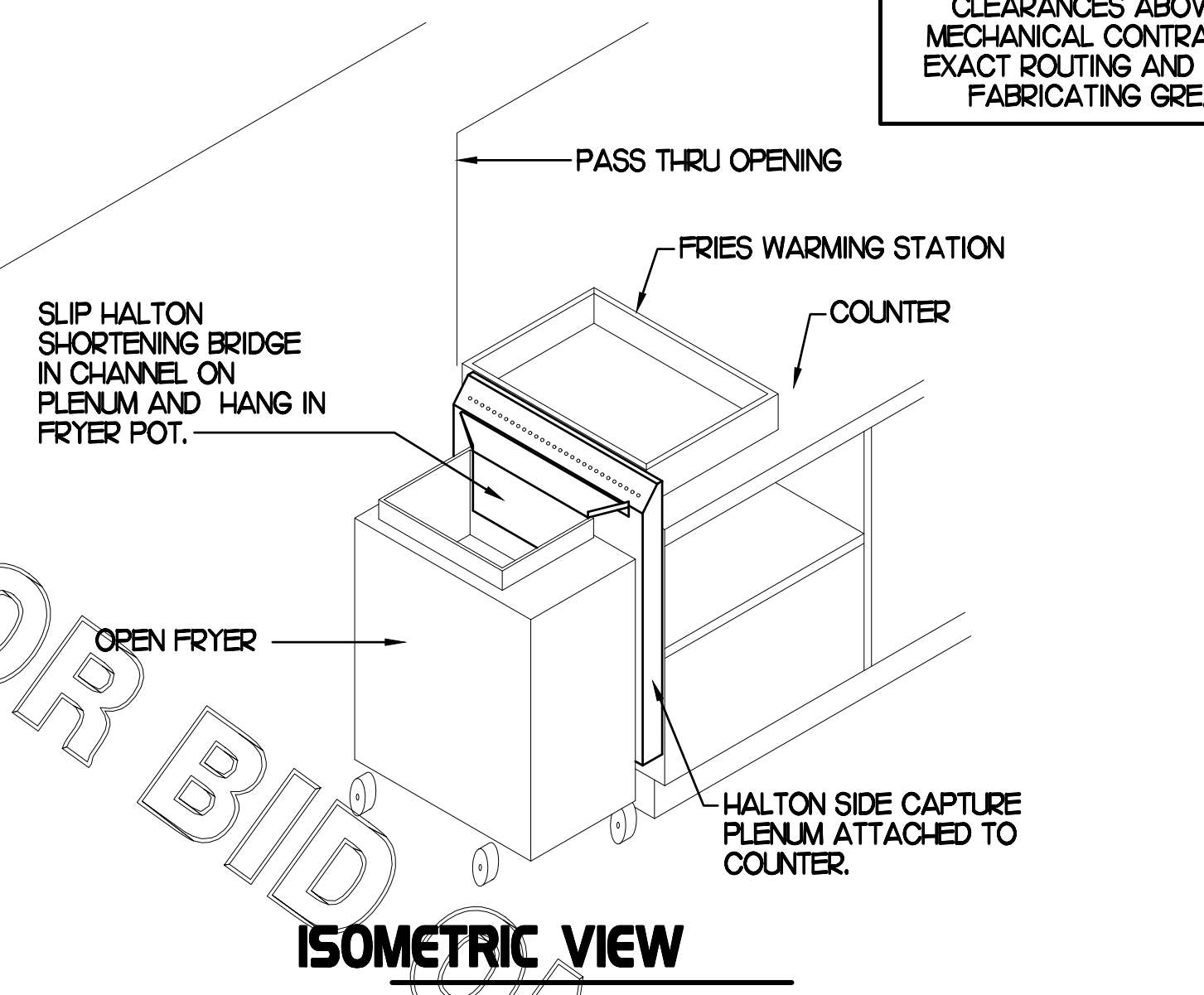
SECTION "A-A"



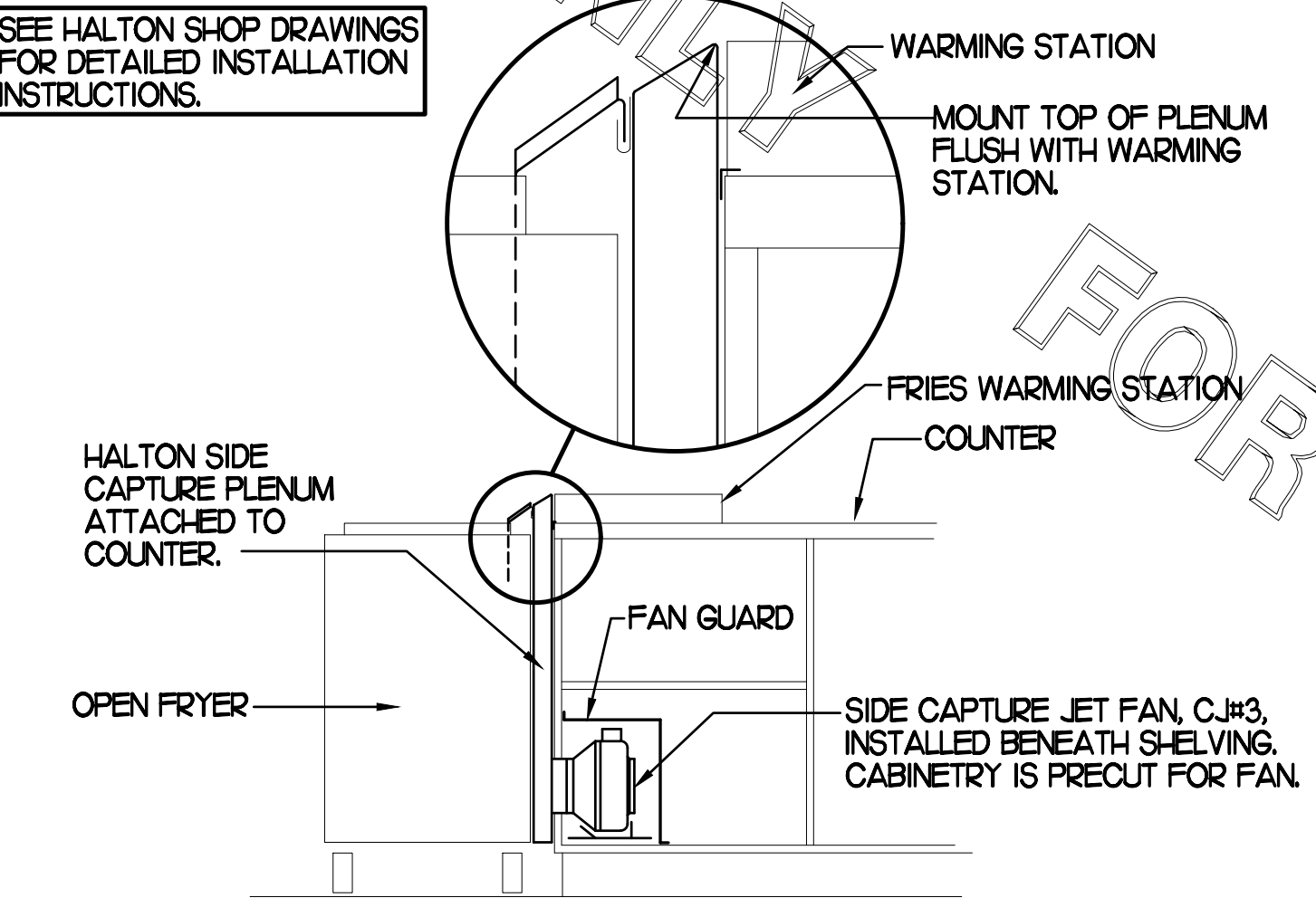
SECTION "B-B"



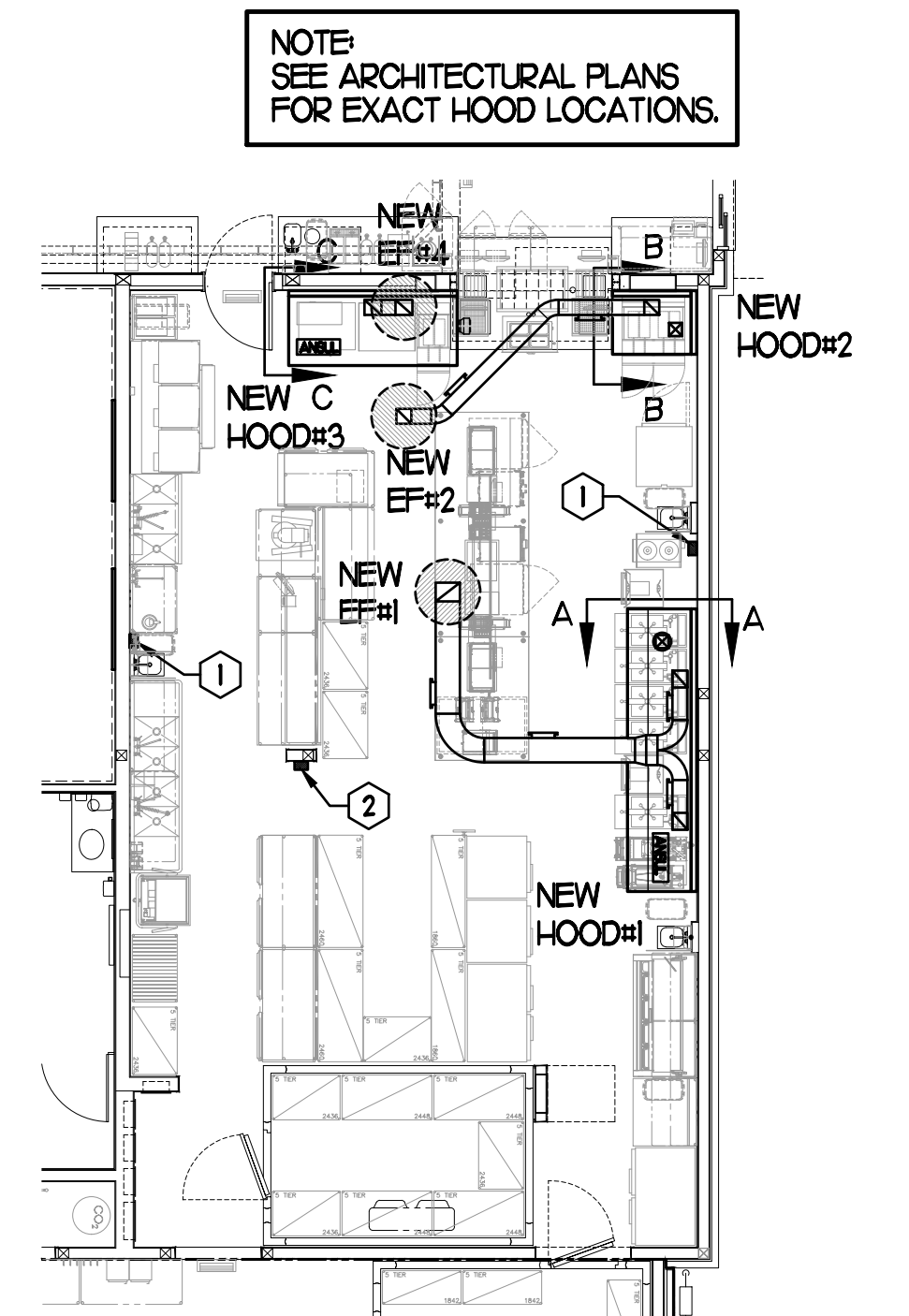
SECTION "C-C"



SEE HALTON SHOP DRAWINGS FOR DETAILED INSTALLATION INSTRUCTIONS.



FRONT VIEW



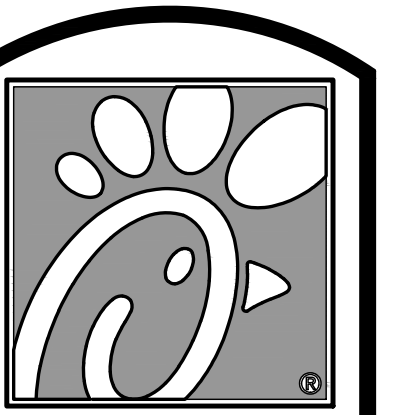
### KEY NOTES

- ANSUL PULL STATIONS SERVING HOOD#2 AND HOOD#3 ADJACENT TO HAND SINKS. LOCATE ANSUL PULL STATION BETWEEN 42" AND 48" AFF. COORDINATE EXACT LOCATION WITH KITCHEN EQUIPMENT ELEVATIONS. J-BOX AND CONDUIT ARE BY ELECTRICAL. PROVIDE RED BAKELITE LABEL WITH 1/2" HIGH LETTERS INDICATING THE HOODS SERVED, I.E. 'PASS-THRU HOODS'. BOTH PULL STATIONS ROUTE TO SAME ANSUL TANK.
- ANSUL PULL STATION SERVING HOOD#1 ON WALL WHERE SHOWN. LOCATE ANSUL PULL STATION BETWEEN 42" AND 48" AFF. COORDINATE EXACT LOCATION WITH KITCHEN EQUIPMENT ELEVATIONS. J-BOX AND CONDUIT ARE BY ELECTRICAL. PROVIDE RED BAKELITE LABEL WITH 1/2" HIGH LETTERS INDICATING THE HOODS SERVED, I.E. 'MAIN COOKLINE HOOD'.

1 HOOD LAYOUT

2 HALTON SIDE CAPTURE JET PLENUM

2 HOOD ELEVATIONS



Chick-fil-A

5200 Buffington Rd.  
Atlanta Georgia,  
30349-2998

Revisions:  
Mark Date By

△

Mark Date By

△

Mark Date By

△



Kurzynske & Associates  
CONSULTING ENGINEERS  
2900 Lebanon Pike, Ste. 201  
Nashville, Tennessee 37214  
Telephone: (615) 255-5203  
Fax: (615) 255-5207  
Email: mail@kurzynske.com

STORE  
WARRINGTON  
CROSSING FSR #1387  
160 EASTON ROAD,  
WARRINGTON, PA  
18976

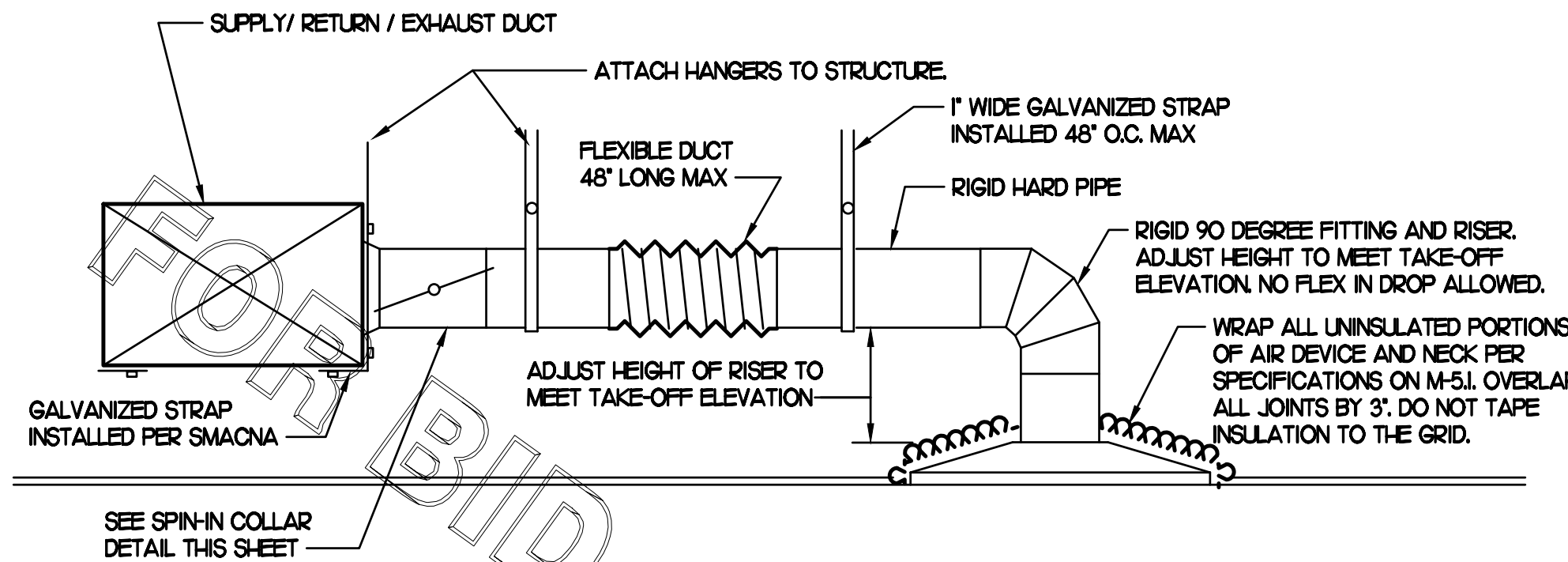
SHEET TITLE  
HOOD DETAILS  
& SCHEDULES

VERSION S97-136  
ISSUE DATE 04.2017

Job No. : 18157.HF.R  
Store : #1387  
Date : 10.16.18  
Drawn By : BM  
Checked By: MK

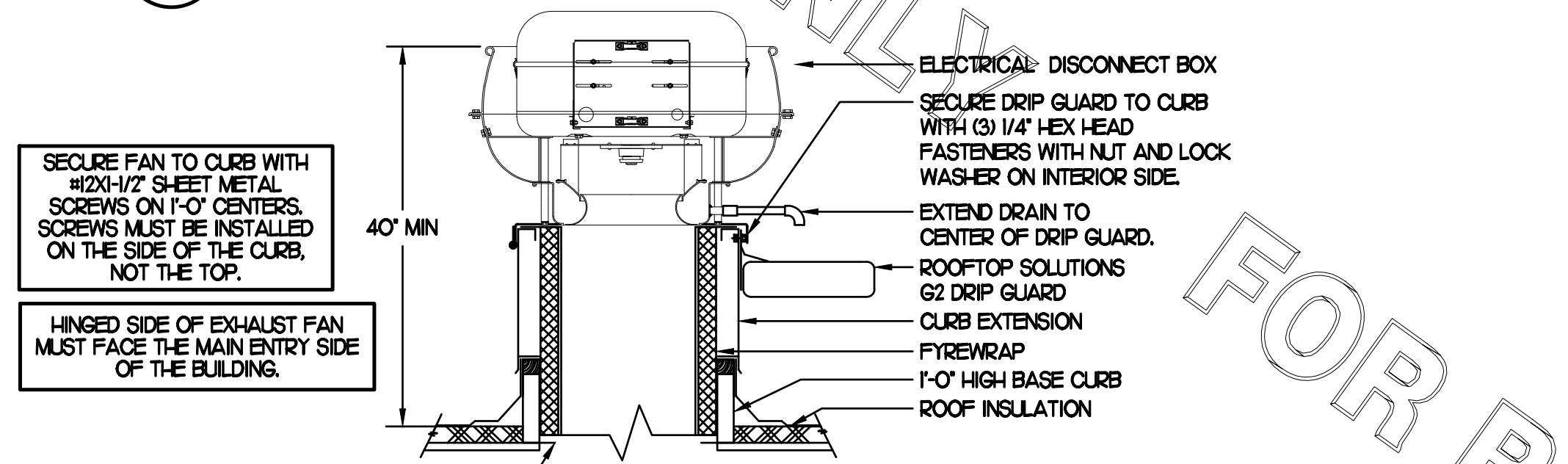
Sheet

M2.I



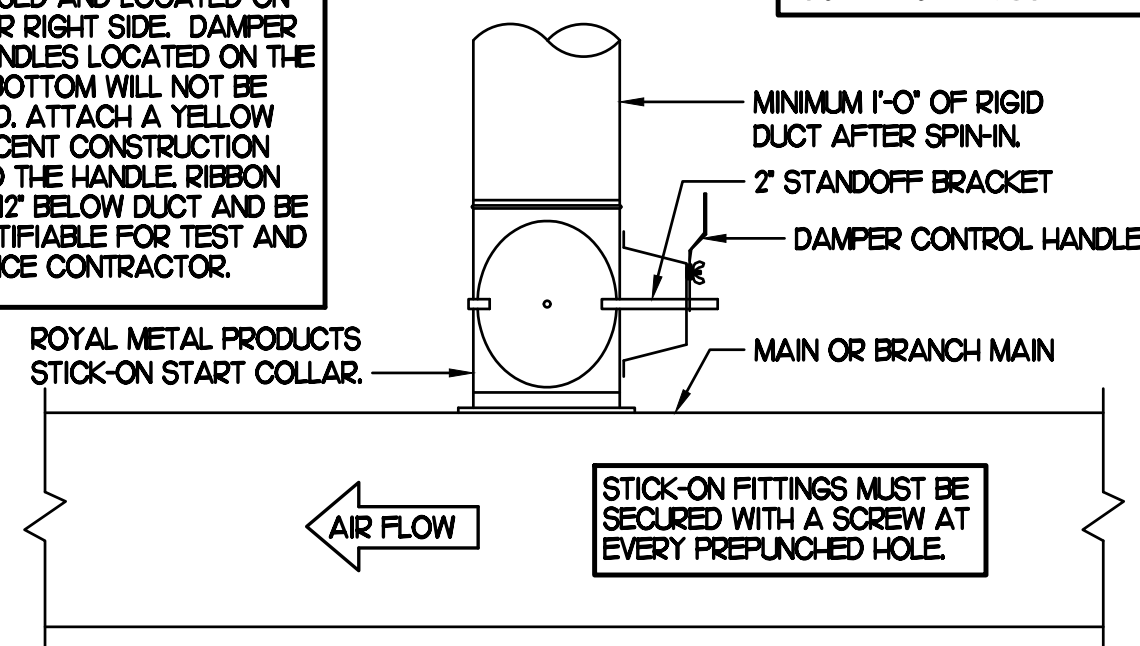
### 1 SAG/RAG/GRILLE TAKE-OFF

NO SCALE



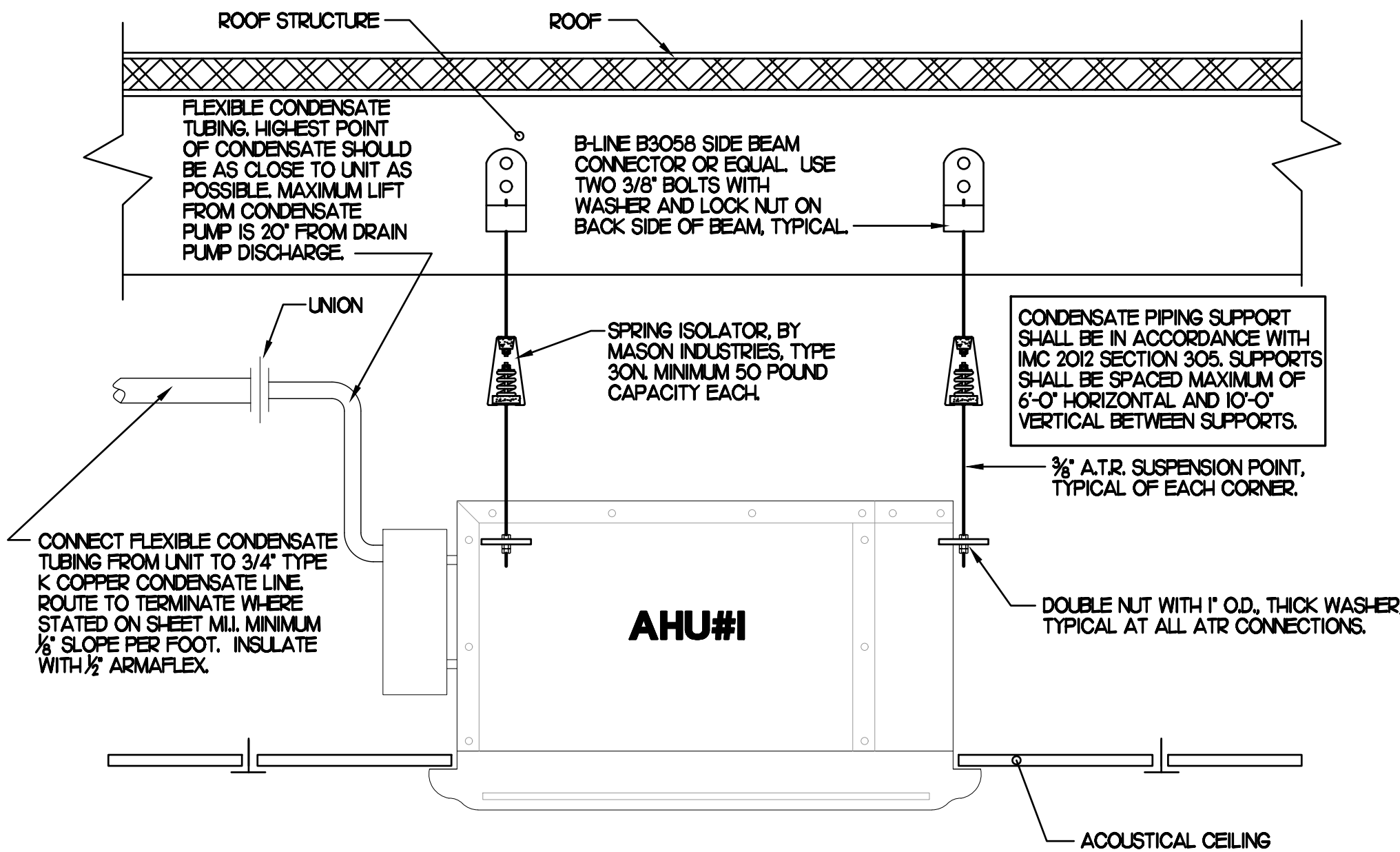
### 2 START COLLAR

NO SCALE



### 3 KITCHEN HOOD EXHAUST FAN

NO SCALE



### 4 TURNING VANES

NO SCALE

### LENNOX FRESH AIR TEMPERING SETUP

- INSTALL FRESH AIR TEMPERING KIT WIRING HARNESS AS RECOMMENDED BY LENNOX.
- LOCATE SUPPLY AIR TEMPERATURE SENSOR IN SUPPLY DUCT DOWNSTREAM OF FIRST ELBOW. SECURE WIRING TO DUCT OR STRUCTURE WITH RUBBER COATED CLAMPS. DO NOT RUN WIRING INSIDE DUCT WORK. PROTECT ALL WIRING PENETRATIONS WITH RUBBER GROMMETS.
- CHANGE PRODIGY-M3 BOARD CONTROL PARAMETER #156 TO A VALUE OF 66 (OLDER MI-8 IMC BOARD ECTO PARAMETER 6.20 SET TO A VALUE OF 145). THIS WILL PREVENT THE SUPPLY AIR TEMPERATURE FROM DROPPING BELOW 66°F DURING HEATING MODE WHEN THERMOSTAT IS NOT ACTIVELY CALLING FOR HEAT. NOTICE - THIS PARAMETER #156 (6.20) MUST BE CHANGED TO ACTIVATE THE FRESH AIR TEMPERING FEATURE.
- CHANGE PRODIGY-M3 BOARD CONTROL PARAMETER #157 TO A VALUE OF 14 (OLDER MI-8 IMC BOARD ECTO PARAMETER 6.21 SET TO A VALUE OF 21). THIS WILL MAKE THE DEADBAND VALUE EQUAL 14°F.
- CHANGE PRODIGY-M3 BOARD CONTROL PARAMETER #158 TO A VALUE OF 300 (OLDER MI-8 IMC BOARD ECTO PARAMETER 6.22 SET TO A VALUE OF 37). THIS WILL MAKE THE CYCLE TIME VALUE EQUAL 5 MINUTES.

### ELECTRIC DUCT HEATER SCHEDULE

MARK	KW	DUCT SIZE (IN DIAMETER)	CFM	TYPE	MANUFACTURER
DH	5.0 * 208/3	10	325	FLANGED ROUND COLLAR	THERMOLEC

REMARKS: CHICK-FIL-A HAS A NATIONAL ACCOUNT WITH TOM BARRROW COMPANY FOR THE DUCT HEATER. THE MECHANICAL CONTRACTOR IS REQUIRED TO PURCHASE THE DUCT HEATER DIRECTLY FROM TOM BARRROW COMPANY. CONTACT MR. SCOTT GEORGE AT 404-351-010 FOR PRICING AND AVAILABILITY. DUCT HEATER NOT PURCHASED THRU TOM BARRROW COMPANY WILL NOT BE ACCEPTED.

- PROVIDE FACTORY AIR FLOW SENSOR.
- PROVIDE FACTORY INTEGRAL DOOR DISCONNECT WITH INTERLOCK.
- PROVIDE FACTORY ROOM THERMOSTAT.
- PROVIDE FACTORY SCR CONTROLLER.
- CONFIRM ELECTRICAL CHARACTERISTICS PRIOR TO ORDERING EQUIPMENT.

### AIR DOOR SCHEDULE

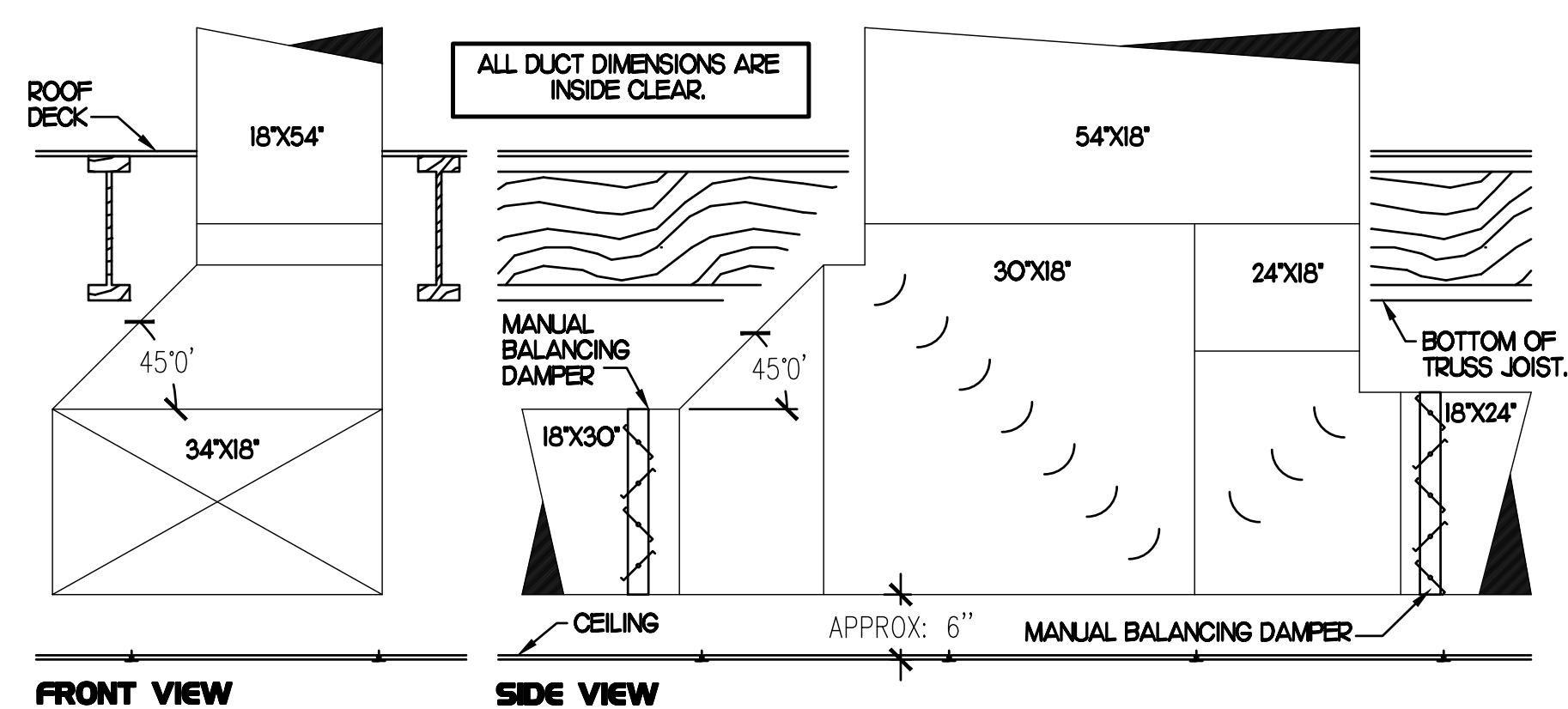
MARK	CFM	VELOCITY	HEATING CAP	HP	AREA SERVED	MODEL	MANUFACTURER	REMARKS
FFH (NEW)	3,867	4,220	NA	3/4	REAR DOOR	RBT-148	POWERED-AIRE	1
FFH2 (EXIST)	-	-	-	-	DRIVE THRU	EXISTING	EXISTING	-

NOTES: CHICK-FIL-A HAS A NATIONAL ACCOUNT WITH TOM BARRROW COMPANY FOR THE AIR DOORS. THE MECHANICAL CONTRACTOR SHALL PURCHASE THE AIR DOORS DIRECTLY FROM TOM BARRROW COMPANY. CONTACT MR. SCOTT GEORGE AT 404-351-010, FOR PRICING AND AVAILABILITY. AIR DOORS NOT PURCHASED THRU TOM BARRROW COMPANY WILL NOT BE ACCEPTED.

REMARKS: 1. FACTORY PROVIDED MAGNETIC DOOR CONTACT WITH FACTORY INSTALLED LOW VOLTAGE CONTROLS LOCATED IN AIR DOOR CABINET.

### 5 AHU#1 INSTALLATION DETAIL

NO SCALE



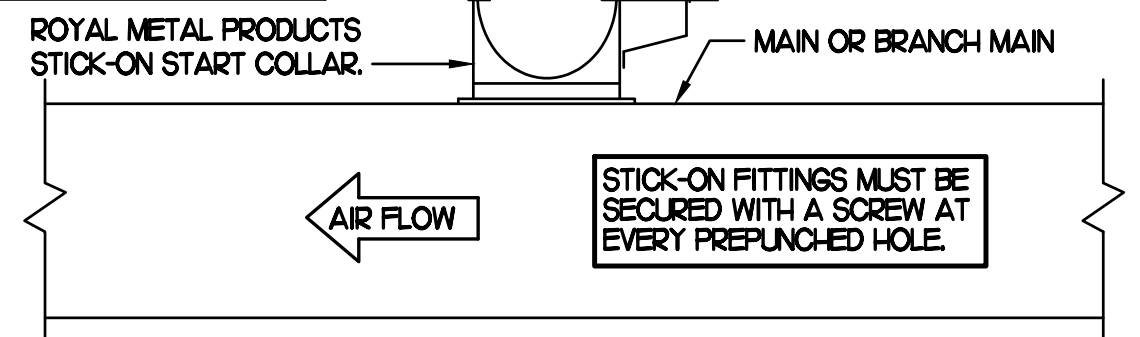
### 6 AC#1 TEE CONSTRUCTION

NO SCALE

CHICK-FIL-A HAS A NATIONAL ACCOUNT WITH TOM BARRROW COMPANY FOR THE ROYAL METAL PRODUCTS START COLLARS FOR BOTH WITH AND WITHOUT A MANUAL BALANCING DAMPER. THE MECHANICAL CONTRACTOR IS REQUIRED TO PURCHASE THE ROYAL METAL PRODUCTS START COLLARS DIRECTLY FROM TOM BARRROW COMPANY. CONTACT MR. SCOTT GEORGE AT 404-351-010 FOR PRICING AND AVAILABILITY. ROYAL METAL PRODUCTS START COLLARS NOT PURCHASED THRU TOM BARRROW COMPANY WILL NOT BE ACCEPTED.

DAMPER CONTROL HANDLE MUST BE LEFT EXPOSED AND LOCATED ON THE LEFT OR RIGHT SIDE. DAMPER CONTROL HANDLES LOCATED ON THE TOP OR BOTTOM WILL NOT BE ACCEPTED. ATTACH A YELLOW FLUORESCENT CONSTRUCTION RIBBON TO THE HANDLE. RIBBON MUST HANG 12\"/>

DO NOT APPLY START COLLAR OVER DUCT WRAP.



STICK-ON FITTINGS MUST BE SECURED WITH A SCREW AT EVERY PREPUNCHED HOLE.

### AIR DEVICE SCHEDULE

MARK	DESCRIPTION	LOCATION	NECK SIZE	FACE SIZE	FRAME TYPE	REMARKS
A	PRICE MODEL APDC ALUMINUM SUPPLY AIR DIFFUSER WITH INDIVIDUALLY ADJUSTABLE CURVED AIR PATTERN CONTROLLERS.	DINING KITCHEN	SEE PLAN	24X24	LAY-IN	1,8
C	PRICE MODEL SMCD STEEL SUPPLY AIR DIFFUSER FIELD ADJUSTABLE AIR PATTERN CONTROLLERS.	ENTRYS	14X4	20X20	BEVELLED	1,3,5,7
F	PRICE MODEL 80 EGGCRATE RETURN AIR GRILLE WITH REMOVABLE WHITE CORE, FACTORY FLAT BLACK BACKPAN AND ROUND NECK.	DINING KITCHEN	SEE PLAN	24X24	LAY-IN	1,8
J	PRICE MODEL SMCD STEEL SUPPLY AIR DIFFUSER FIELD ADJUSTABLE AIR PATTERN CONTROLLERS.	RESTROOMS	10X10	16X16	BEVELLED	1,2,3,5,7
K	PRICE MODEL APDOR ALUMINUM PERFORATED FACE RETURN AIR GRILLE.	RESTROOMS ENTRYS	14X4	17X17	SURFACE	1,4,5,7

REMARKS: 1. STANDARD OFF WHITE FINISH.  
2. PROVIDE MODEL VCS3 NECK DAMPER.  
3. SEE DRAWING MJI FOR THROW.  
4. PROVIDE MODEL VCR7 NECK DAMPER ON GRILLES IN RESTROOMS.  
5. PROVIDE BACKPAN MC TO SEAL JOINTS WITH MASTIC AND INSULATE EXTERNALLY.  
6. NOT USED.  
7. FIELD INSULATE BACKPAN AS SHOWN ON DETAIL 1M3-1.  
8. FACTORY INSULATED R-6 BACKPAN.

### EXHAUST FAN SCHEDULE

MARK	CFM	ESP	RPM	TIP SPEED (FPM)	HP	AREA SERVED	MODEL	MANUFACTURER	REMARKS
EF#1 (NEW)	1700	.65	964	4164	1/2	HOOD#1	165V5B	LOREN COOK	1,2,3,4,5,6
EF#2 (NEW)	701	.75	1238	4,861	1/3	HOOD#2	150V4B	LOREN COOK	1,2,3,4,5,6
EF#3 (EXIST)	530	-	-	-	-	RESTROOMS	-	-	-
EF#4 (NEW)	804	.75	1295	5,085	1/3	HOOD#3	150V4B	LOREN COOK	1,2,3,4,5,6

NOTES: 1. GREASE EXHAUST FAN RPM BASED ON 80 DEGREE F AIR AT 1000 FEET ABOVE SEA LEVEL.  
2. GREASE EXHAUST FANS TO BE UL 762 LISTED.  
3. CHICK-FIL-A HAS A NATIONAL ACCOUNT WITH TOM BARRROW COMPANY FOR THE FAN/CURB PACKAGE. THE MECHANICAL CONTRACTOR IS REQUIRED TO PURCHASE THE FAN/CURB PACKAGE DIRECTLY FROM TOM BARRROW COMPANY. CONTACT MR. SCOTT GEORGE AT 404-351-010 FOR PRICING AND AVAILABILITY. FANS AND CURBS NOT PURCHASED THRU TOM BARRROW COMPANY WILL NOT BE ACCEPTED.

REMARKS: 1. PROVIDE FACTORY 1-0\"/>

### GAS FIRED ROOFTOP UNIT SCHEDULE

MARK	COOLING CAPACITY (MEB)				HEATING CAPACITY (MEB)				FAN SECTION (CFM)			MODEL	MANUFACTURER	REMARKS
	TOTAL	SENS	INPUT	OUTPUT	STAGES	SUPPLY	OA	HP	ESP	R-410A				
ACH (NEW)	103.8	78.9	240.0	192.0	2	3,400	750	2	.75	LGH4034B	LENNOX	1,4,5,6,7,8,9,10,11,12,13,17		
ACH2 (NEW)	278.0	202.9	480.0	384.0	2	8,000	2,000	7.5	1.0	LGH80054B	LENNOX	1,3,5,6,7,8,9,10,11,12,16,17		
ACH3 (NEW)	108.0	85.3	240.0	192.0	2	3,750	545	2	.75	LGH4034B	LENNOX	1,4,5,6,7,8,9,10,11,12,13,17		
ACH4 (NEW)	93.0	67.9	240.0	192.0	2	2,895	755	2	1.0	LGH4034B	LENNOX	1,4,5,6,7,8,9,10,11,12,14,17		
ACH5 (NEW)	63.3	46.8	150.0	120.0	1	2,000	300	1	1.0	LGH40604E	LENNOX	1,4,5,6,7,8,9,10,14,15,17		

NOTES: 1. COOLING CAPACITIES ARE GROSS, BASED ON ENTERING 80°FDB/67°FWB, OUTDOOR 95°FDB, AND 400 CFM PER TON.  
2. CHICK-FIL-A MAINTAINS A NATIONAL ACCOUNT FOR EQUIPMENT WITH LENNOX CORPORATION. CONTACT LENNOX NATIONAL ACCOUNTS AT 800-367-6285 (OR BY FAX AT 972-457-5112) FOR PRICING, ORDERING AND AVAILABILITY.  
3. MECHANICAL CONTRACTOR TO VERIFY LENNOX SUBMITTAL WITH CONSTRUCTION DOCUMENTS.

REMARKS: 1. PROVIDE DIFFERENTIAL ENTHALPHY ECONOMIZER WITH POWER EXHAUST. NOT USED.  
2. PROVIDE FACTORY INSTALLED AND UNIT POWERED 115V GFI SERVICE OUTLET.  
3. PROVIDE FACTORY INSTALLED 115V GFI SERVICE OUTLET.  
4. PROVIDE FACTORY INSTALLED RETURN SIDE SMOKE DETECTOR.  
5. PROVIDE FACTORY INSTALLED RETURN SIDE SMOKE DETECTOR.  
6. PROVIDE FACTORY INSTALLED NON-FUSED DISCONNECT.  
7. PROVIDE 7\"/>

### DUCTLESS SPLIT SYSTEM HEAT PUMP UNIT SCHEDULE

MARK	COOLING CAPACITY (MEB)		HEATING CAPACITY (MEB)		EFFICIENCIES		FAN SECTION (CFM)		ELECTRICAL DATA		R-410A MODEL	MFR	
	MIN	MAX	MIN	MAX	SEER	HSPF	SUPPLY	OA	MOCF	VOLTAGE			
AHU#1/CUH (NEW)	4J	13.3	4J	16.3	18.0	9.0	240-410	15	15	208/1/60	CS-E12R24UM	CU-E12R24U	PANASONIC

NOTES: 1. MECHANICAL CONTRACTOR SHALL PURCHASE THE SPLIT SYSTEM HEAT PUMP DIRECTLY FROM TOM BARRROW COMPANY. CONTACT MR. SCOTT GEORGE AT 404-351-010, FOR PRICING AND AVAILABILITY.

REMARKS: 1. ELECTRICIAN TO PROVIDE NON-FUSED DISCONNECT.  
2. MECHANICAL TO PROVIDE AND INSTALL REFRIGERANT PIPING AS PER MFR RECOMMENDATIONS.  
3. PROVIDE ENGRAVED PLASTIC LABEL AT AHU#1 AND CUH WITH 1\"/>



5200 Buffington Rd.  
Atlanta Georgia,  
30349-2998

Revisions:  
Mark Date By

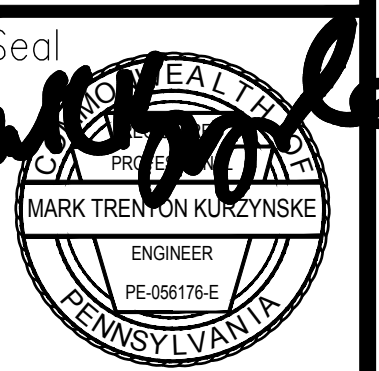
△

Mark Date By

△

Mark Date By

△



12-6-18

Kurzynske & Associates  
CONSULTING ENGINEERS  
2900 Lebanon Pike, Ste. 201  
Nashville, Tennessee 37214  
Telephone: (615) 255-5203  
Fax: (615) 255-5207  
Email: mail@kurzynske.com

STORE  
WARRINGTON  
CROSSING FSR #1387  
160 EASTON ROAD,  
WARRINGTON, PA  
18976

SHEET TITLE  
HVAC DETAILS  
& SCHEDULES

VERSION S97-136  
ISSUE DATE 04.2017

Job No. : 18157.HF.R

Store : #1387

Date : 10.16.18

Drawn By : BM

Checked By : MK

Sheet

**M3.1**

PROVIDE A PROFESSIONALLY LAMINATED COPY OF THESE DETAILS TO BE INSTALLED INSIDE THE ROOFTOP UNIT CONTROL CABINET. USE A SETON CHART FRAME STYLE #68624, TELEPHONE NUMBER 800-243-6624. FOR MOUNTING THE DETAIL, ATTACH THE FRAME TO THE INTERIOR OF THE UNIT IN PLAIN AND EASY VIEW OF THE CONTROLS SECTION. CONTACT ENGINEER OF RECORD FOR A REPRODUCIBLE COPY OF THE DETAIL.



Chick-fil-A

5200 Buffington Rd.  
Atlanta Georgia,  
30349-2998

Revisions:

Mark Date By  
△

Mark Date By  
△

Mark Date By  
△



12-6-18

Kurzynske & Associates  
CONSULTING ENGINEERS  
2900 Lebanon Pike, Ste. 201  
Nashville, Tennessee 37214  
Telephone: (615) 255-5203  
Fax: (615) 255-5207  
Email: mail@kurzynske.com

STORE  
WARRINGTON  
CROSSING FSR #1387  
160 EASTON ROAD,  
WARRINGTON, PA  
18976

SHEET TITLE  
HVAC  
CONTROLS

VERSION S97-136  
ISSUE DATE 04.2017

Job No. : 18157.HF.R  
Store : #1387  
Date : 10.16.18  
Drawn By : BM  
Checked By : MK

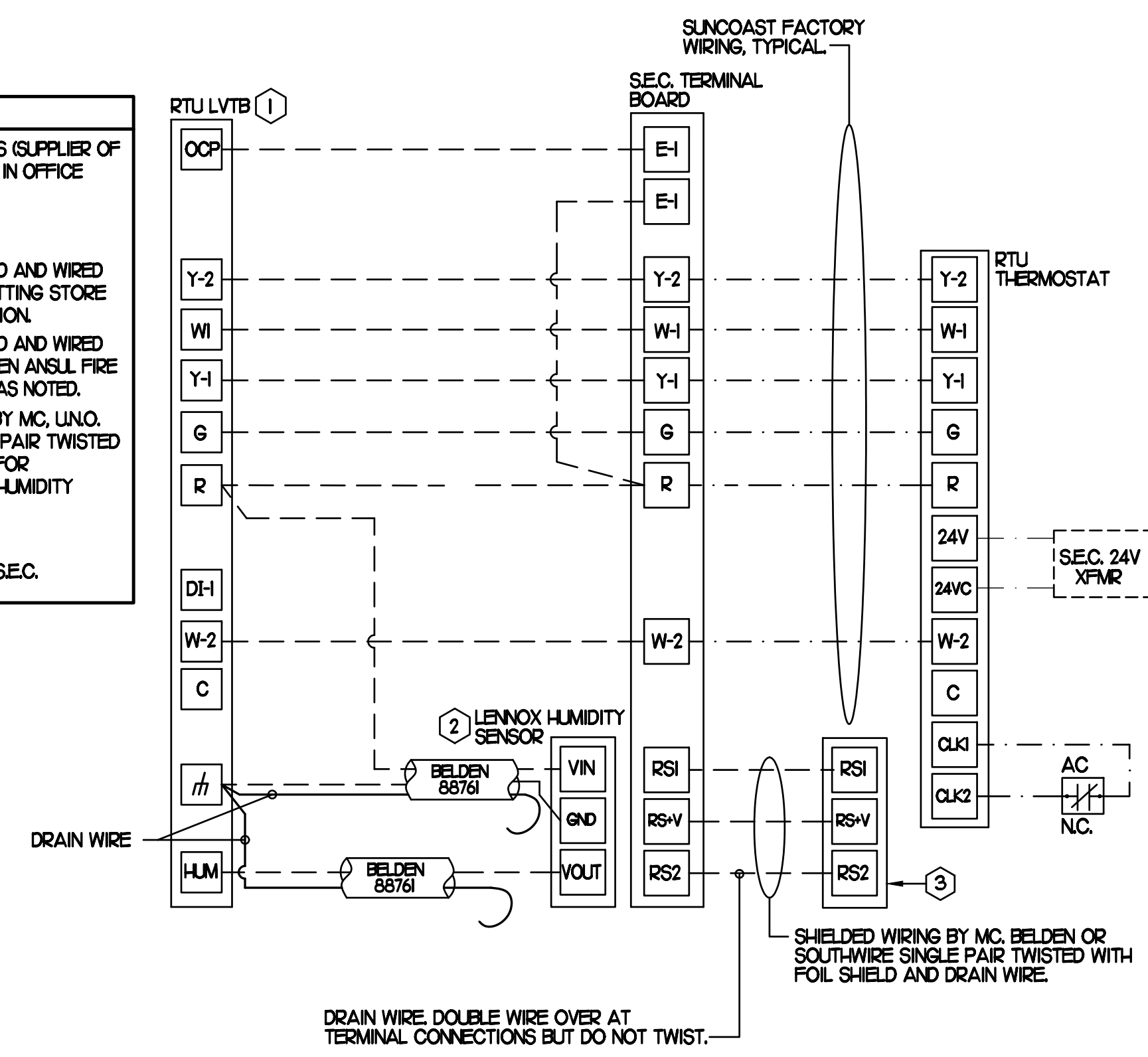
Sheet

M4.I

FOR BID ONLY

FOR BID ONLY

LEGEND	
SEC.	SUNCOAST ENVIRONMENTAL CONTROLS (SUPPLIER OF TEMP/FAN CONTROL PANEL LOCATED IN OFFICE)
①	KEY NOTE REFERENCE
MC	MECHANICAL CONTRACTOR
AC	SUNCOAST RELAY FACTORY INSTALLED AND WIRED IN CFA-500 PANEL, ENERGIZED BY PUTTING STORE SWITCH IN 'STORE OCCUPIED' POSITION.
AN	SUNCOAST RELAY FACTORY INSTALLED AND WIRED IN CFA-500 PANEL, DE-ENERGIZED WHEN ANSLL FIRE SUPPRESSION SYSTEM IS ACTIVATED, AS NOTED.
---	18 AWG MIN LOW VOLTAGE WIRING BY MC, UNO. USE BELDEN OR SOUTHWIRE SINGLE PAIR TWISTED WITH FOIL SHIELD AND DRAIN WIRE FOR TEMPERATURE SENSORS. (NOT FOR HUMIDITY SENSORS)
---	LOW VOLTAGE WIRING BY SEC.
---	LINE VOLTAGE BY ELECTRICIAN OR SEC.



- FOR ALL RTUS EXCEPT AT KITCHEN RTUS, CHANGE PRODIGY-M3 BOARD CONTROL PARAMETER #65 TO ZERO (#68 ON LCH UNITS). THIS WILL CAUSE THE O.A. DAMPER TO OPEN ON 'OCCUPIED' START. AT KITCHEN RTUS (LGH TYPE) LEAVE THE SETTING AT THE DEFAULT VALUE SO THE O.A. DAMPER WILL REMAIN CLOSED FOR THE FIRST 60 MINUTES AFTER 'OCCUPIED' START. AT KITCHEN RTUS (LCH TYPE) CHANGE THE VALUE TO 5400 SO THE O.A. DAMPER WILL REMAIN CLOSED FOR THE FIRST 90 MINUTES AFTER 'OCCUPIED' START.
- MECHANICAL CONTRACTOR SHALL MAKE PLASTIC LAMINATE OF THIS DETAIL AND INSTALL PERMANENTLY ON INSIDE DOOR OF ROOFTOP UNIT CONTROL COMPARTMENT.
- SEE DETAILS THIS SHEET FOR SMOKE DETECTOR AND ANNUNCIATOR WIRING.
- AT HUMIDITROL RTUS SET PRODIGY-M3 BOARD CONTROL PARAMETER #105 FOR DE-HUMIDIFICATION OPERATION TO A VALUE OF 5 (60% RH).
- SET ALL THERMOSTATS FOR AUTO CHANGEOVER.
- FOR MSAV UNITS, SET THE MSAV LOW SPEED SETTING TO THE SAME VALUE AS THE HIGH SPEED AFTER TAB IS COMPLETE.
- PROVIDE PLASTIC ENGRAVED LABEL AT ALL NEW SENSORS WITH 1/2" HIGH WHITE LETTERING ON BLACK BACKGROUND. IE 'ACH2 HUMIDITY SENSOR' OR 'ACH2 TEMP SENSOR'. PLACE LABELS ON WALL ADJACENT TO DEVICE, DO NOT APPLY DIRECTLY TO DEVICE.

- KEYED NOTES:
- LOW VOLTAGE WIRING TO RTU TO BE ROUTED TO UNIT THRU FACTORY WIREWAY.
  - HUMIDITROL UNITS ONLY: WIRING TO HUMIDITY SENSOR TO BE MADE WITH TWO SEPARATE RUNS OF SHIELDED TWISTED PAIR. TERMINATE SHIELD WIRES AT TH, LEAVE OPEN AT SENSOR.
  - NETWORK TSTAT REMOTE TEMP SENSOR PROVIDED BY SUNCOAST AND INSTALLED BY MC. FIELD CALIBRATE EACH SENSOR.

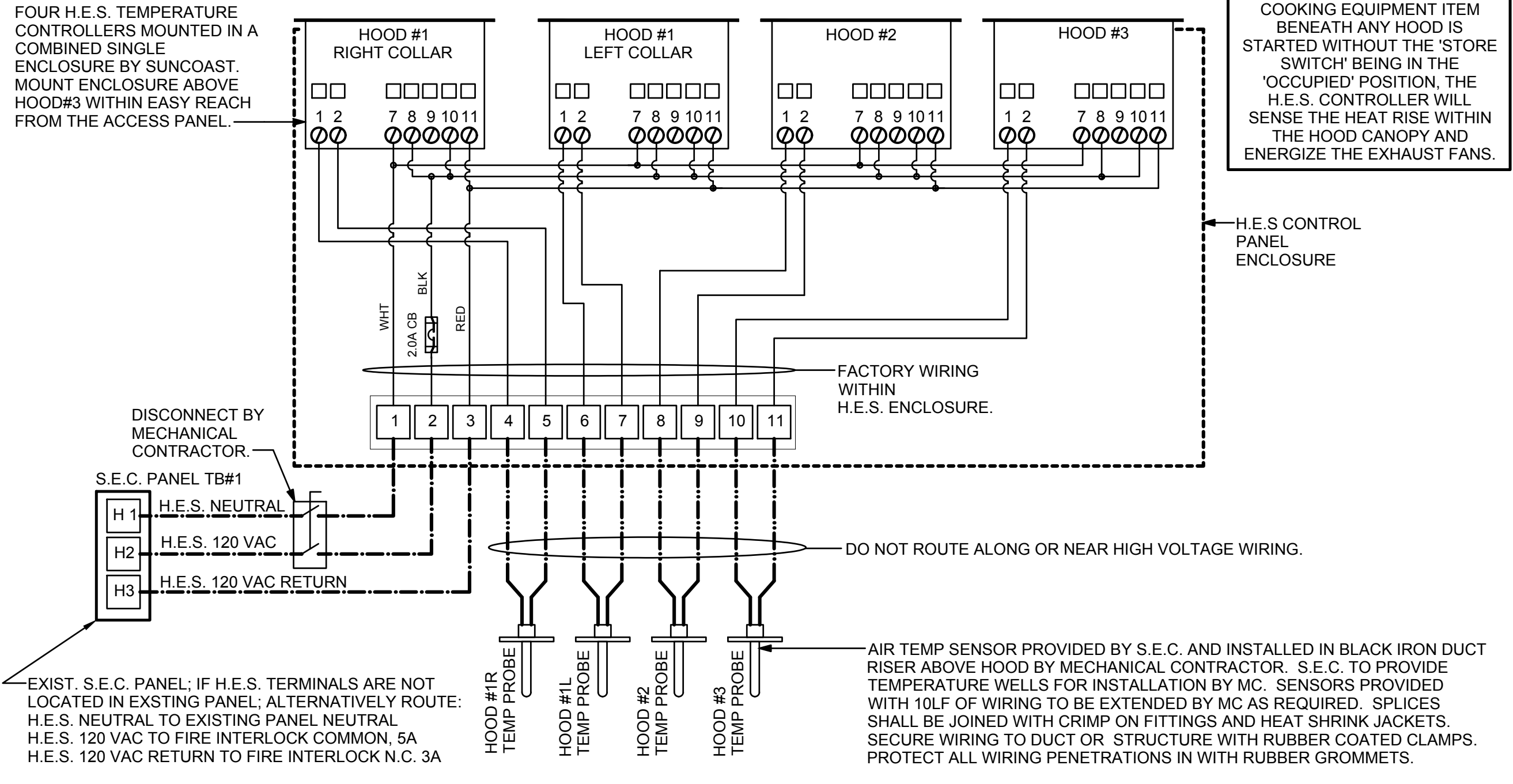
2 NEW ROOFTOP UNIT CONTROL WIRING - LENNOX

NONE

LEGEND	
S.E.C.	SUNCOAST ENVIRONMENTAL CONTROLS CFA-500 ENERGY MGT PANEL
H.E.S.	SUNCOAST ENVIRONMENTAL CONTROLS HOOD EXHAUST SAFETY CONTROLLER
M.C.	MECHANICAL CONTRACTOR
---	18 AWG MIN UNSHIELDED LOW VOLTAGE WIRING BY MC, U.N.O.
---	120 VAC WIRING BY MECHANICAL CONTRACTOR

- GENERAL NOTES
- MECHANICAL CONTRACTOR TO PURCHASE THE H.E.S. CONTROL PANEL AND COMPONENTS FROM SUNCOAST ENVIRONMENTAL CONTROLS. TELEPHONE 877-544-6679.
  - CONTROLS COMPONENTS TO BE FACTORY MOUNTED IN LABELED NEMA-1 ENCLOSURES.
  - MECHANICAL CONTRACTOR TO PROVIDE A PROFESSIONALLY LAMINATED COPY OF THIS DETAIL ATTACHED TO THE ENCLOSURE. CONTACT ENGINEER OF RECORD FOR A REPRODUCIBLE COPY OF THE DETAIL.

S.E.C. H.E.S. OPERATION  
IN THE EVENT THAT ANY COOKING EQUIPMENT ITEM BENEATH ANY HOOD IS STARTED WITHOUT THE 'STORE SWITCH' BEING IN THE 'OCCUPIED' POSITION, THE H.E.S. CONTROLLER WILL SENSE THE HEAT RISE WITHIN THE HOOD CANOPY AND ENERGIZE THE EXHAUST FANS.



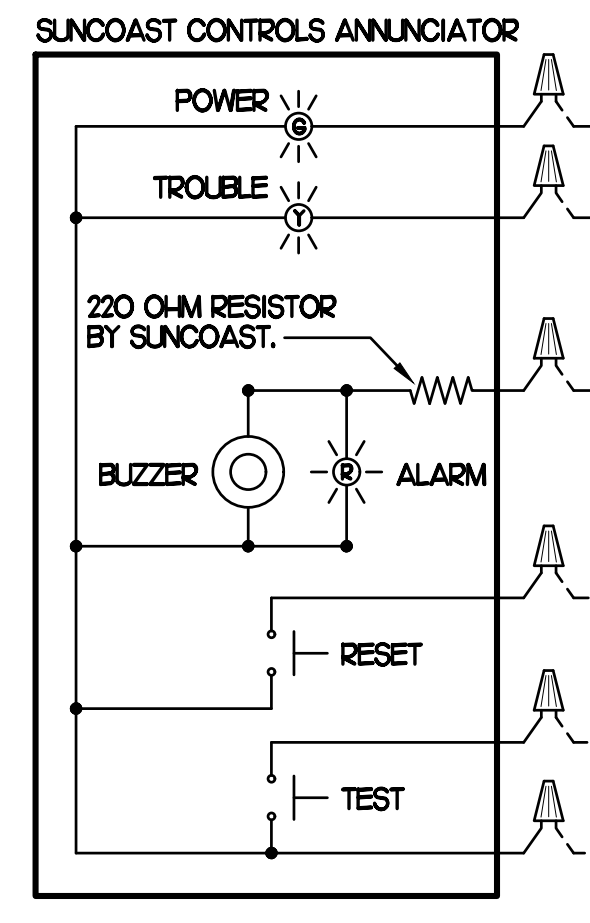
3 HOOD EXHAUST SAFETY SWITCH (H.E.S.) WIRING DIAGRAM

NONE

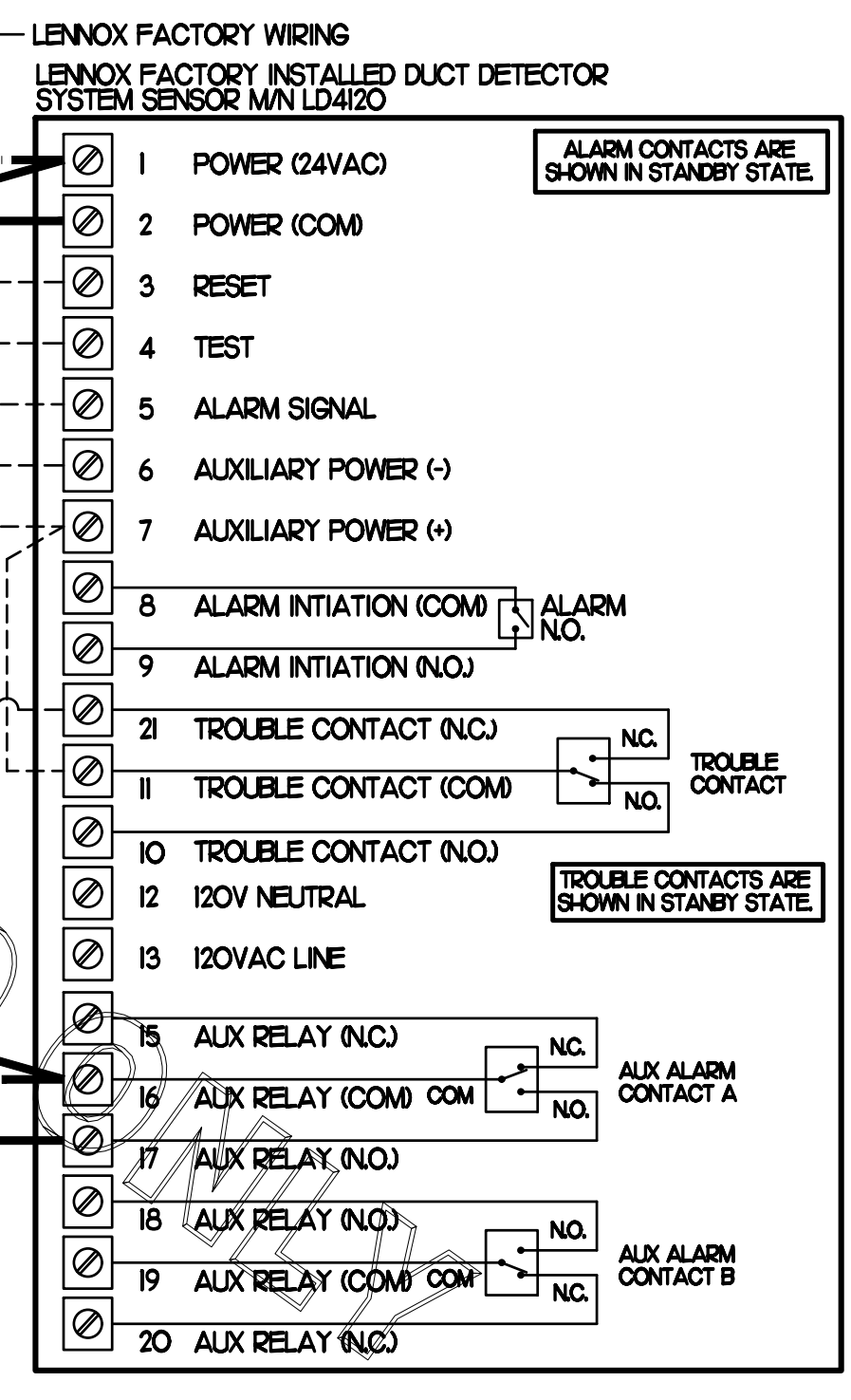
SUPPLY SIDE DETECTORS  
IF SUPPLY SIDE SMOKE DETECTORS ARE SHOWN ON DWG M.I.I. AND CALLED FOR ON RTU SCHEDULE, THE CONTRACTOR IS TO RELOCATE FACTORY INSTALLED SUPPLY SMOKE DETECTOR FROM BLOWER SECTION TO DUCTWORK. SEE NOTES ON DWG M.I.I.

LEGEND	
---	18 AWG MIN WIRING BY MECH CONTRACTOR
---	FACTORY ANNUNCIATOR DETECTOR WIRING
---	FACTORY LENNOX WIRING

LABELING  
PROVIDE ENGRAVED LABEL WITH 1/2" HIGH WHITE LETTERS ON BLACK BACKGROUND IDENTIFYING UNIT SERVED.



FIELD INSTALLED WIRING  
WITHIN THE ROOFTOP UNIT, WIRING SHALL BE ROUTED BY WAY OF FACTORY WIREWAYS ONLY. WIRING ROUTED OVER THE BLOWER HOUSING OR BY WAY OF OTHER ROUTES DETRIMENTAL TO THE WIRING LIFE WILL NOT BE ACCEPTED.



1 SMOKE DETECTOR AND ANNUNCIATOR WIRING DIAGRAM - LENNOX

NONE SCALE

COMcheck Software Version 4.1.0.0  
Envelope Compliance Certificate

Section 1: Project Information

Energy Code: 2009 IECC  
Project Title: Chick-fil-A #1387 - Warrington Crossing FSR  
Project Type: Addition

Construction Site: 160 Easton Rd, Warrington, PA 18976  
Owner/Agent: Chick-fil-A, 5200 Buffington Road, Atlanta, GA 30349  
Designer/Contractor: Kurzynske & Associates, 2900 Lebanon Pike, Suite 201, Nashville, TN 37214, 615-255-5203

Building Location (for weather data): Horsham, Pennsylvania  
Climate Zone: 4a  
Building Use: Activity Type(s): Office/Storage (Office) : Nonresidential  
Floor Area: 344

Section 2: Envelope Assemblies and Requirements Checklist

Envelope PASSES: Design 4% better than code

Envelope Assemblies:

Table with 7 columns: Orientation, Component Name/Description, Gross Area or Perimeter, Cavity R-Value, Cont. R-Value, Proposed U-Factor, Budget U-Factor(a)

(a) Budget U-factors are used for software baseline calculations ONLY and are not code requirements.

Air Leakage, Component Certification, and Vapor Retarder Requirements:

- 1. All joints and penetrations are caulked, gasketed or covered with a moisture vapor permeable wrapping material installed in accordance with the manufacturer's installation instructions.
2. Windows, doors, and skylights certified as meeting leakage requirements.
3. Component R-values & U-factors labeled as certified.
4. No roof insulation is installed on a suspended ceiling with removable ceiling panels.
5. Other components have supporting documentation for proposed U-Factors.
6. Insulation installed according to manufacturer's instructions, in substantial contact with the surface being insulated, and in a manner that achieves the rated R-value without compressing the insulation.
7. Stair, elevator shaft vents, and other outdoor air intake and exhaust openings in the building envelope are equipped with motorized dampers.

Project Title: Chick-fil-A #1387 - Warrington Crossing FSR  
Data filename: F:\Prototypes\Chick-fil-A\2018-CFA Projects\CFA Remodel Projects\18157.HF.R - Warrington Crossing, PA - 1387zComCheck\CFA #1387 ComCheck - mech.ck  
Report date: 10/11/18  
Page 1 of 6

- 8. Cargo doors and loading dock doors are weather sealed.
9. Recessed lighting fixtures installed in the building envelope are Type IC rated as meeting ASTM E283, are sealed with gasket or caulk.
10. Building entrance doors have a vestibule equipped with self-closing devices.
Exceptions:
Building entrances with revolving doors.
Doors not intended to be used as a building entrance.
Doors that open directly from a space less than 3000 sq. ft. in area.
Doors used primarily to facilitate vehicular movement or materials handling and adjacent personnel doors.
Doors opening directly from a sleeping/dwelling unit.

Section 3: Compliance Statement

Compliance Statement: The proposed envelope design represented in this document is consistent with the building plans, specifications and other calculations submitted with this permit application. The proposed envelope system has been designed to meet the 2009 IECC requirements in COMcheck Version 4.1.0.0 and to comply with the mandatory requirements of the Requirements Checklist.

MARK KURZYNSKE, P.E. Signature Date 10/11/18

COMcheck Software Version 4.1.0.0  
Mechanical Compliance Certificate

Section 1: Project Information

Energy Code: 2009 IECC  
Project Title: Chick-fil-A #1387 - Warrington Crossing FSR  
Project Type: Addition

Construction Site: 160 Easton Rd, Warrington, PA 18976  
Owner/Agent: Chick-fil-A, 5200 Buffington Road, Atlanta, GA 30349  
Designer/Contractor: Kurzynske & Associates, 2900 Lebanon Pike, Suite 201, Nashville, TN 37214, 615-255-5203

Building Location (for weather data): Horsham, Pennsylvania  
Climate Zone: 4a

Section 2: General Information

Section 3: Mechanical Systems List

Table with 3 columns: Quantity, System Type & Description

Project Title: Chick-fil-A #1387 - Warrington Crossing FSR  
Data filename: F:\Prototypes\Chick-fil-A\2018-CFA Projects\CFA Remodel Projects\18157.HF.R - Warrington Crossing, PA - 1387zComCheck\CFA #1387 ComCheck - mech.ck  
Report date: 10/11/18  
Page 3 of 6

- Exception(s):
Standby equipment automatically off when primary system is operating
Multiple units controlled to sequence operation as a function of load
2. Minimum one temperature control device per system
3. Minimum one humidity control device per installed humidification/dehumidification system
4. Load calculations per ASHRAE/ACCA Standard 183
5. Automatic Controls: Setback to 55°F (heat) and 65°F (cool), 7 day clock, 2-hour occupant override, 10-hour backup
Exception(s):
Continuously operating zones
6. Outside-air source for ventilation: system capable of reducing OSA to required minimum
7. R-5 supply and return air duct insulation in unconditioned spaces
R-8 supply and return air duct insulation outside the building
R-8 insulation between ducts and the building exterior when ducts are part of a building assembly
Exception(s):
Ducts located within equipment
Ducts with interior and exterior temperature difference not exceeding 15°F.
8. Mechanical fasteners and sealants used to connect ducts and air distribution equipment
9. Ducts sealed - longitudinal seams on rigid ducts; transverse seams on all ducts; UL 181A or 181B tapes and mastic
10. Hot water pipe insulation: 1.5 in. for pipes <=1.5 in. and 2 in. for pipes >1.5 in.
Chilled water/refrigerant/brine pipe insulation: 1.5 in. for pipes <=1.5 in. and 1.5 in. for pipes >1.5 in.
Steam pipe insulation: 1.5 in. for pipes <=1.5 in. and 3 in. for pipes >1.5 in.
Exception(s):
Piping within HVAC equipment.
Fluid temperatures between 55 and 105°F.
Fluid not heated or cooled with renewable energy.
Piping within room fan-coil (with AHR440 rating) and unit ventilators (with AHR1840 rating).
Runouts <4 ft in length.
11. Operation and maintenance manual provided to building owner
12. Thermostatic controls have 5°F deadband
Exception(s):
Thermostats requiring manual changeover between heating and cooling
Special occupancy or special applications where wide temperature ranges are not acceptable and are approved by the authority having jurisdiction.
13. Balancing devices provided in accordance with IMC 603.17
14. Demand control ventilation (DCV) present for high design occupancy areas (>40 persons/1000 ft2 in spaces >500 ft2) and served by systems with any one of 1) an air-side economizer, 2) automatic modulating control of the outdoor air damper, or 3) a design outdoor airflow greater than 3000 cfm.
Exception(s):
Systems with heat recovery.
Multiple-zone systems without DDC of individual zones communicating with a central control panel.
Systems with a design outdoor airflow less than 1200 cfm.
Spaces where the supply airflow rate minus any makeup or outgoing transfer air requirement is less than 1200 cfm.
15. Motorized, automatic shutoff dampers required on exhaust and outdoor air supply openings
Exception(s):
Gravity dampers acceptable in buildings <3 stories
16. Automatic controls for freeze protection systems present
17. Exhaust air heat recovery included for systems 5,000 cfm or greater with more than 70% outside air fraction or specifically exempted
Exception(s):
Hazardous exhaust systems, commercial kitchen and clothes dryer exhaust systems that the International Mechanical Code prohibits the use of energy recovery systems.
Systems serving spaces that are heated and not cooled to less than 60°F.
Where more than 60 percent of the outdoor heating energy is provided from site-recovered or site solar energy.
Heating systems in climates with less than 3600 HDD.
Cooling systems in climates with a 1 percent cooling design wet-bulb temperature less than 64°F.
Systems requiring dehumidification that employ energy recovery in series with the cooling coil.
Laboratory fume hood exhaust systems that have either a variable air volume system capable of reducing exhaust and makeup air volume to 50 percent or less of design values or, a separate make up air supply meeting the following makeup air requirements:

Project Title: Chick-fil-A #1387 - Warrington Crossing FSR  
Data filename: F:\Prototypes\Chick-fil-A\2018-CFA Projects\CFA Remodel Projects\18157.HF.R - Warrington Crossing, PA - 1387zComCheck\CFA #1387 ComCheck - mech.ck  
Report date: 10/11/18  
Page 5 of 6

- a) at least 75 percent of exhaust flow rate, b) heated to no more than 2°F below room setpoint temperature, c) cooled to no lower than 3°F above room setpoint temperature, d) no humidification added, e) no simultaneous heating and cooling.

Section 5: Compliance Statement

Compliance Statement: The proposed mechanical design represented in this document is consistent with the building plans, specifications and other calculations submitted with this permit application. The proposed mechanical systems have been designed to meet the 2009 IECC requirements in COMcheck Version 4.1.0.0 and to comply with the mandatory requirements of the Requirements Checklist.

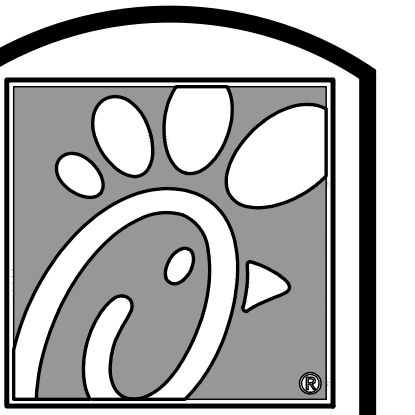
MARK KURZYNSKE, P.E. Signature Date 10/11/18

Section 6: Post Construction Compliance Statement

HVAC record drawings of the actual installation, system capacities, calibration information, and performance data for each equipment provided to the owner.
HVAC O&M documents for all mechanical equipment and system provided to the owner by the mechanical contractor.
Written HVAC balancing and operations report provided to the owner.
The above post construction requirements have been completed.

Principal Mechanical Designer-Name Signature Date

Project Title: Chick-fil-A #1387 - Warrington Crossing FSR  
Data filename: F:\Prototypes\Chick-fil-A\2018-CFA Projects\CFA Remodel Projects\18157.HF.R - Warrington Crossing, PA - 1387zComCheck\CFA #1387 ComCheck - mech.ck  
Report date: 10/11/18  
Page 6 of 6



5200 Buffington Rd. Atlanta Georgia, 30349-2998

Revisions: Mark Date By

Mark Date By

Mark Date By

Mark Date By

Mark Date By

Mark Date By



Kurzynske & Associates CONSULTING ENGINEERS 2900 Lebanon Pike, Ste. 201 Nashville, Tennessee 37214 Telephone: (615) 255-5203 Fax: (615) 255-5207 Email: mail@kurzynske.com

WARRINGTON CROSSING FSR #1387 160 EASTON ROAD, WARRINGTON, PA 18976

SHEET TITLE MECHANICAL COMCHECK

VERSION S97-136 ISSUE DATE 04.2017

Job No. : 18157.HF.R Store : #1387 Date : 10.16.18 Drawn By : BM Checked By : MK

MSI

**MODEL: KVL-2**

STANDARD FEATURES:  
 S.S. FILTERS (KSA) 7  
 1/2 S.S. FILTERS (KSA) 1  
 CAPTURE-JET FIRE DAMPER \*  
 STAND-OFF \*

OPTIONS:  
 REMOTE SWITCH PANEL \*  
 FIRE PROTECTION \*  
 ETL LISTED V/D EXHAUST DAMPER \*  
 CEILING CLOSURE 3  
 STD. BACKSPASH \*  
 INSULATED BACKSPASH \*

MATERIAL:  
 EXPOSED SURFACES 18 GA. S.S. \*  
 ALL 18 GA. S.S. \*

COMMENTS:  
 1) CLOSURE HEIGHT = TBD (THREE SIDES)  
 CEILING HEIGHT = ADVISE  
 CEILING CLOSURE RECESSED 1" FROM FRONT TO CREATE SHELF  
 FRONT CLOSURE PANEL WITH 54"x24" ACCESS DOOR RIGHT SIDE ACCESS TO INSUL TANKS  
 18"x18" ACCESS DOOR LEFT SIDE AT CAPTURE-JET V/ FRONT CJ INTAKE  
 FULL RIGHT END PANEL  
 NOTCHED LEFT END PANEL  
 3" REAR STAND-OFF TO HAVE 1" THICK INSULATION  
 EQUIPMENT COVERED  
 (2) PRESSURE FRYSERS  
 ANSUL WEIGHT= 63 LBS  
 HOOD WEIGHT= 943 LBS

DATE	DWG. NO.	ITEM NO.	EXHAUST AIR INFORMATION
10.08.18	U18-859-01	H-1	CFM T.A.B. SP
CHICK-FIL-A #1387			1700 .12' .23'
PROJECT WARRINGTON CROSSING			
LOCATION WARRINGTON, PA			
SUBMITTED BY HALTON CO.			113 .30'

**MODEL: KVL-C**

STANDARD FEATURES:  
 S.S. FILTERS (KSA) 2  
 CAPTURE-JET FIRE DAMPER \*  
 STAND-OFF \*

OPTIONS:  
 REMOTE SWITCH PANEL \*  
 FIRE PROTECTION \*  
 ETL LISTED V/D EXHAUST DAMPER \*  
 CEILING CLOSURE 2  
 STD. BACKSPASH \*  
 INSULATED BACKSPASH \*

MATERIAL:  
 EXPOSED SURFACES 18 GA. S.S. \*  
 ALL 18 GA. S.S. \*

COMMENTS:  
 1) CLOSURE HEIGHT = TBD (THREE SIDES)  
 CEILING HEIGHT = ADVISE  
 CEILING CLOSURE RECESSED 1" FROM FRONT TO CREATE SHELF  
 18"x18" ACCESS DOOR CENTERED AT CAPTURE-JET V/ FRONT CJ INTAKE  
 NOTCHED LEFT END PANEL  
 DOUBLE RECEPTACLE PIN & SLEEVE  
 3" X 5" TRIM STRIP FOR STAND-OFF ON RIGHT END  
 3" SIDE & REAR STAND-OFF TO HAVE 1" THICK INSULATION  
 EQUIPMENT COVERED CO FRYERS  
 HOOD WEIGHT= 850 LBS

DATE	DWG. NO.	ITEM NO.	EXHAUST AIR INFORMATION
10.08.18	U18-859-01	H-2	CFM T.A.B. SP
CHICK-FIL-A #1387			701 .30' .52'
PROJECT WARRINGTON CROSSING			
LOCATION WARRINGTON, PA			
SUBMITTED BY HALTON CO.			30 .29'

**MODEL: KVM**

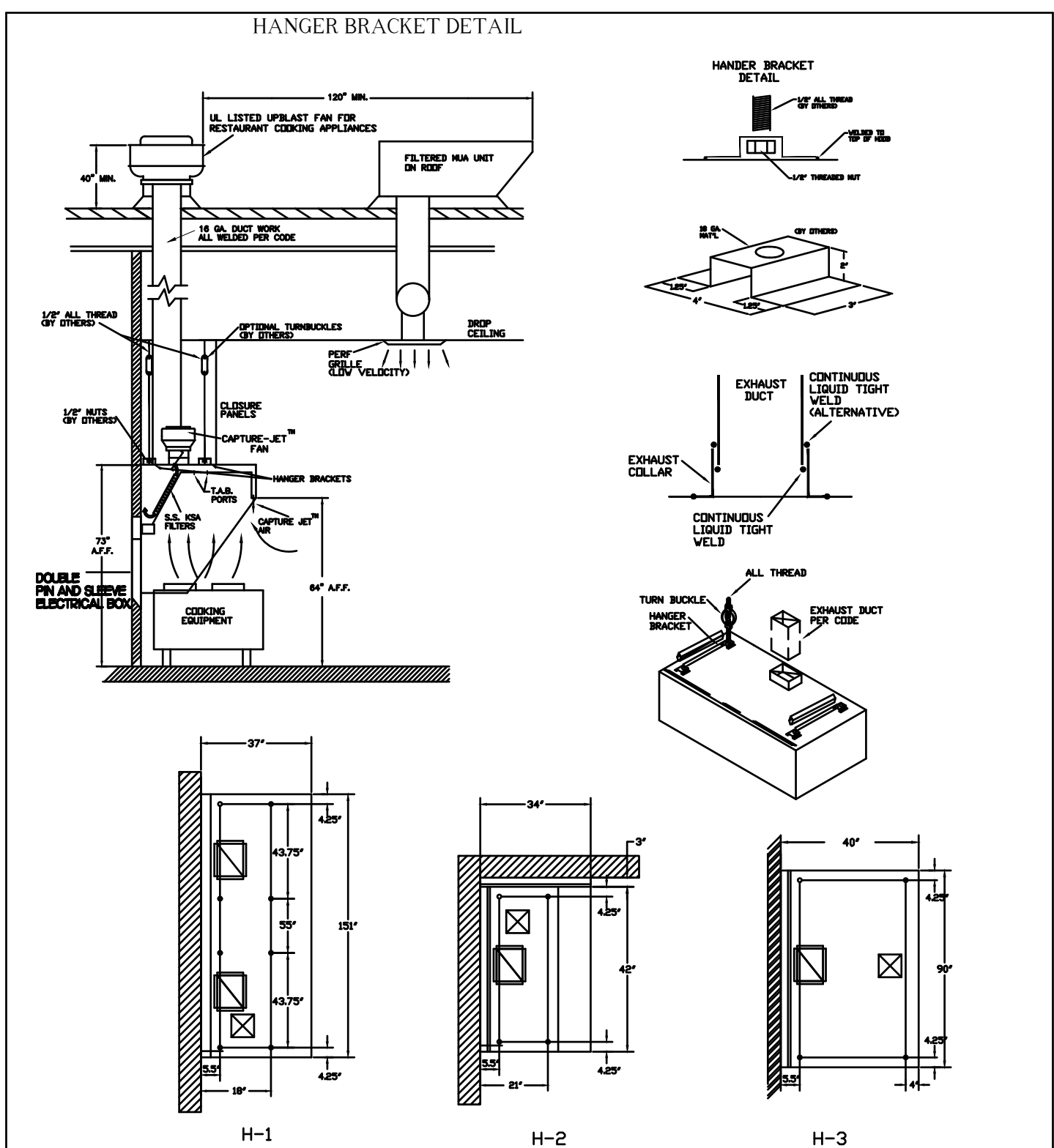
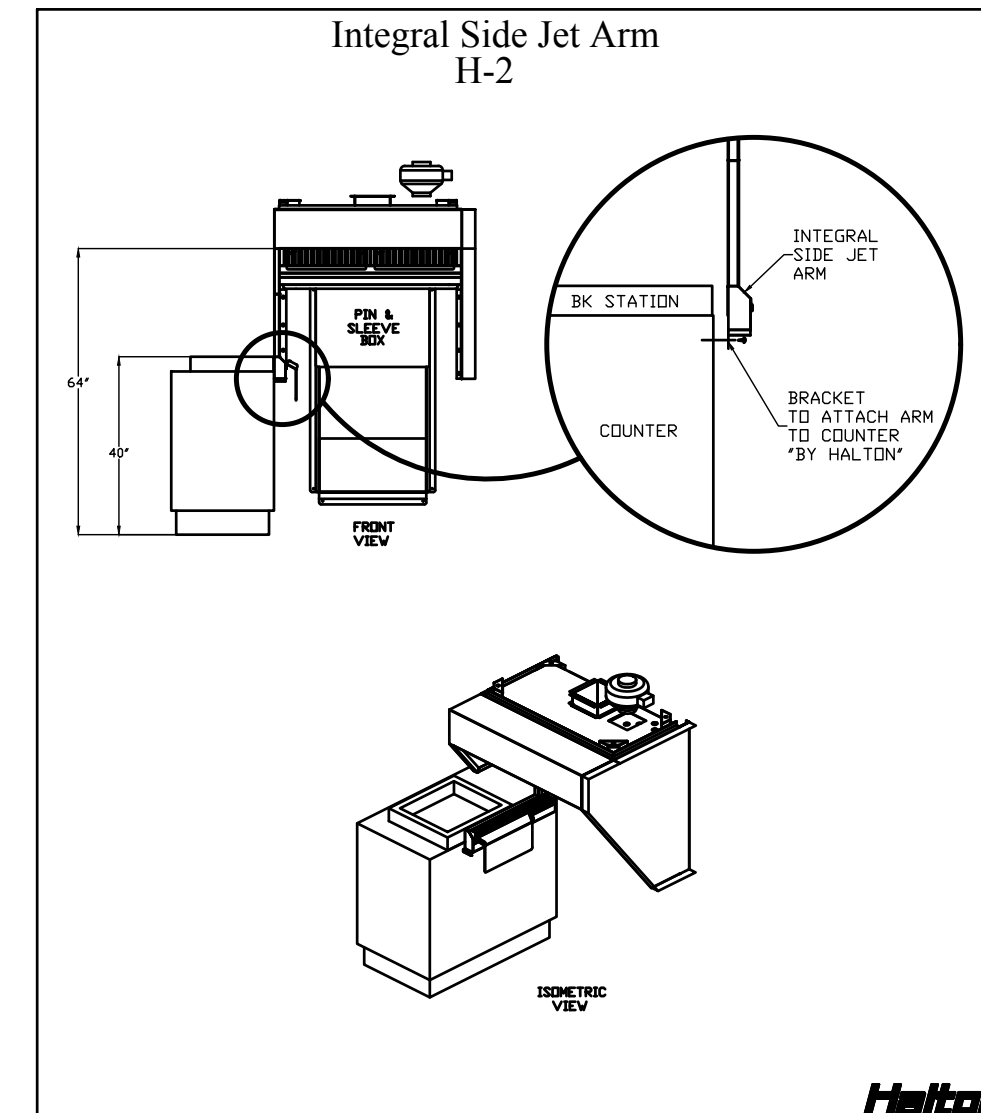
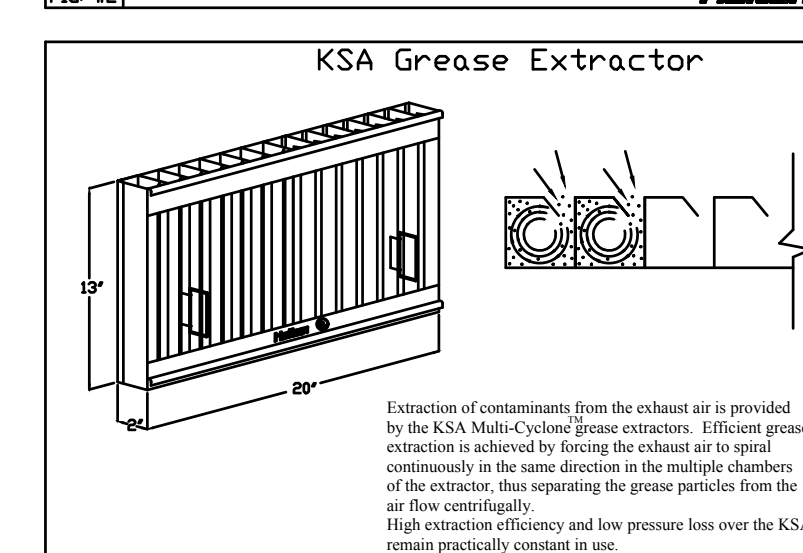
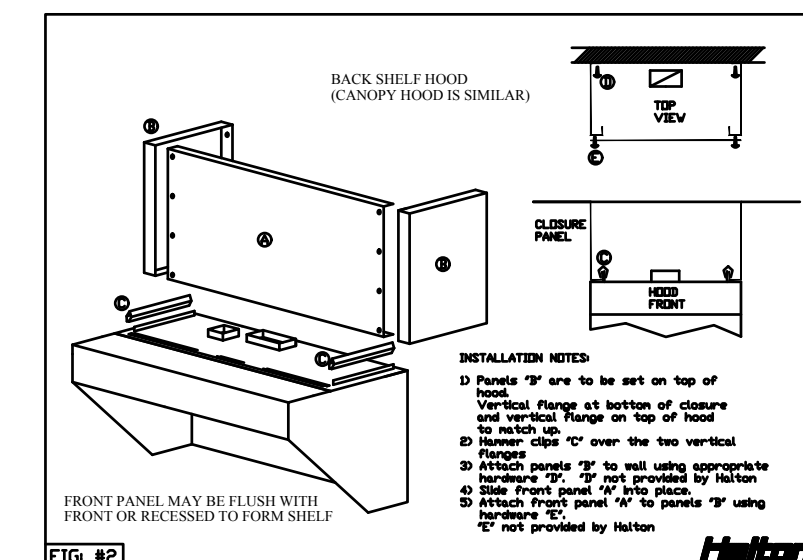
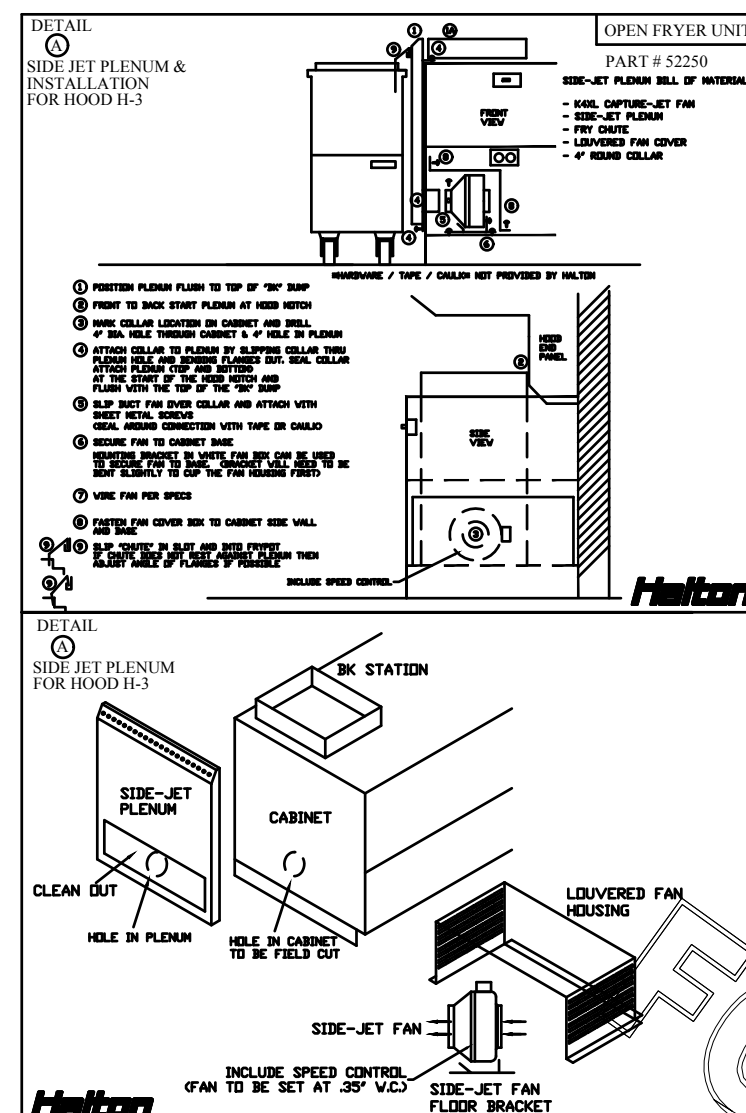
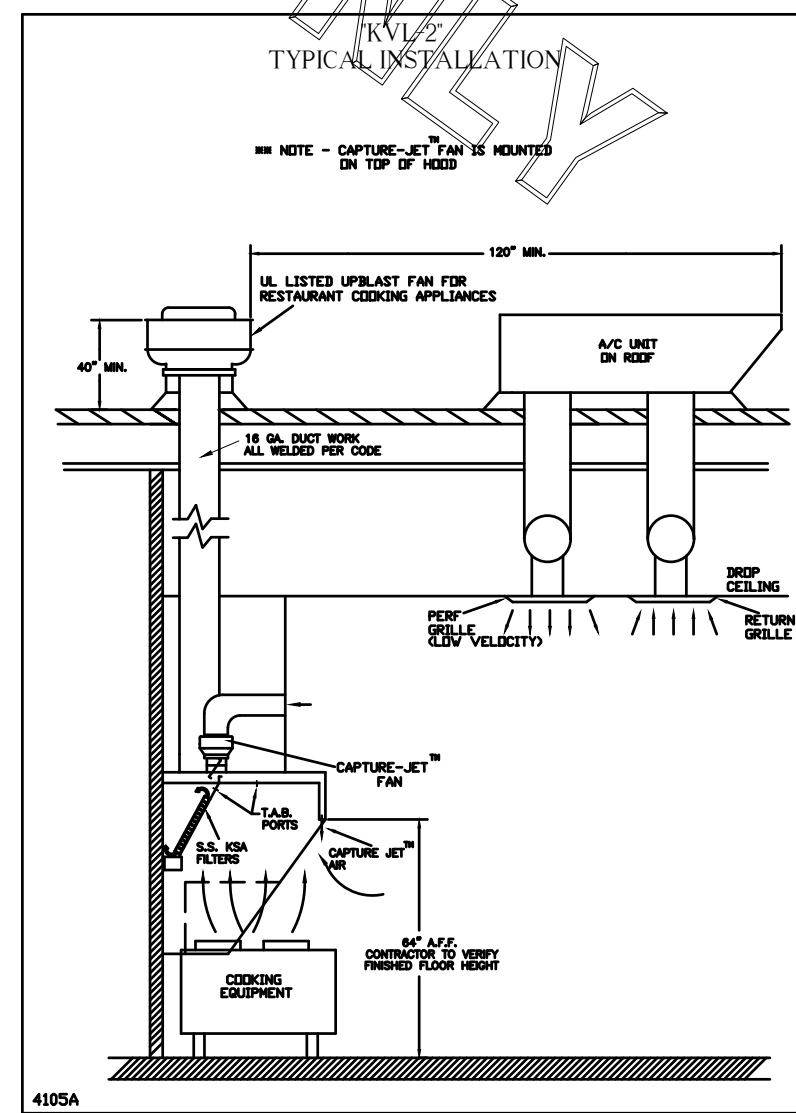
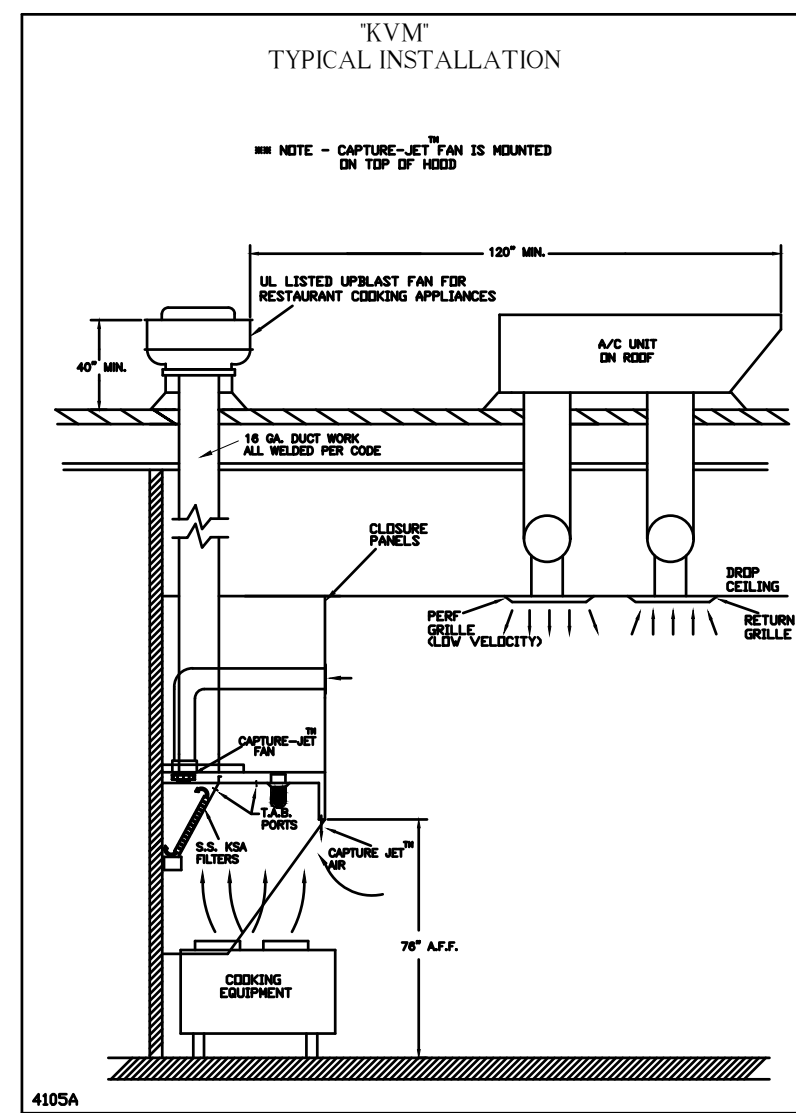
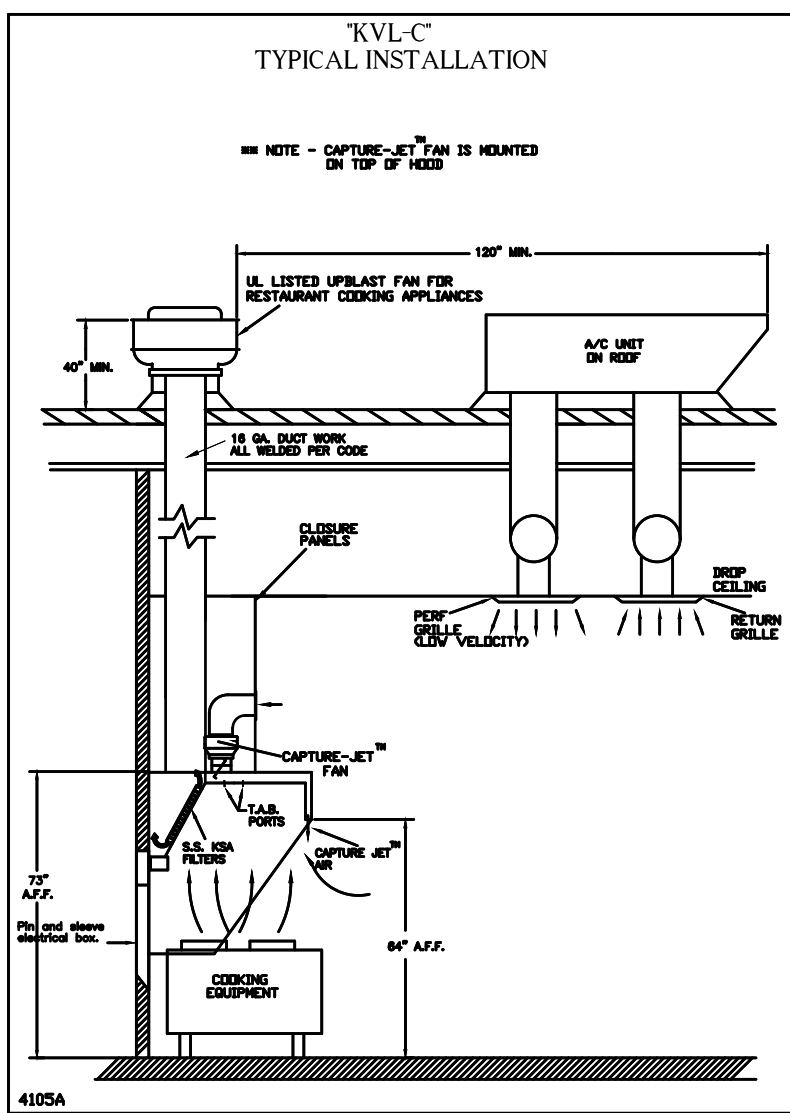
STANDARD FEATURES:  
 S.S. FILTERS (KSA) 4  
 CAPTURE-JET FIRE DAMPER \*  
 STAND-OFF \*  
 INCANDESCENT LIGHT 1

OPTIONS:  
 REMOTE SWITCH PANEL \*  
 FIRE PROTECTION \*  
 ETL LISTED V/D EXHAUST DAMPER \*  
 CEILING CLOSURE 3  
 STD. BACKSPASH \*  
 INSULATED BACKSPASH \*

MATERIAL:  
 EXPOSED SURFACES 18 GA. S.S. \*  
 ALL 18 GA. S.S. \*

COMMENTS:  
 1) CLOSURE HEIGHT = TBD (THREE SIDES)  
 CEILING HEIGHT = ADVISE  
 FRONT CLOSURE PANEL WITH 54"x24" ACCESS DOOR LEFT SIDE ACCESS TO INSUL TANKS & 18"x18" ACCESS DOOR RIGHT SIDE ACCESS TO INSUL TANKS  
 SIDE-JET PLENUM SUPPLIED BY HALTON INSTALLED BY OTHERS (DETAIL "A")  
 CUSTOM 18" SINGLE RECEPTACLE PIN & SLEEVE  
 3" REAR STAND-OFF TO HAVE 1" THICK INSULATION  
 NOTCHED RIGHT END PANEL  
 SIDE SHIELD ON LEFT SIDE  
 EQUIPMENT COVERED DVEN GRIDDLE FRYER  
 ANSUL WEIGHT= 63 LBS  
 HOOD WEIGHT= 600 LBS

DATE	DWG. NO.	ITEM NO.	EXHAUST AIR INFORMATION
10.08.18	U18-859-01	H-3	CFM T.A.B. SP
CHICK-FIL-A #1387			804 .09' .31'
PROJECT WARRINGTON CROSSING			
LOCATION WARRINGTON, PA			
SUBMITTED BY HALTON CO.			68 .28'



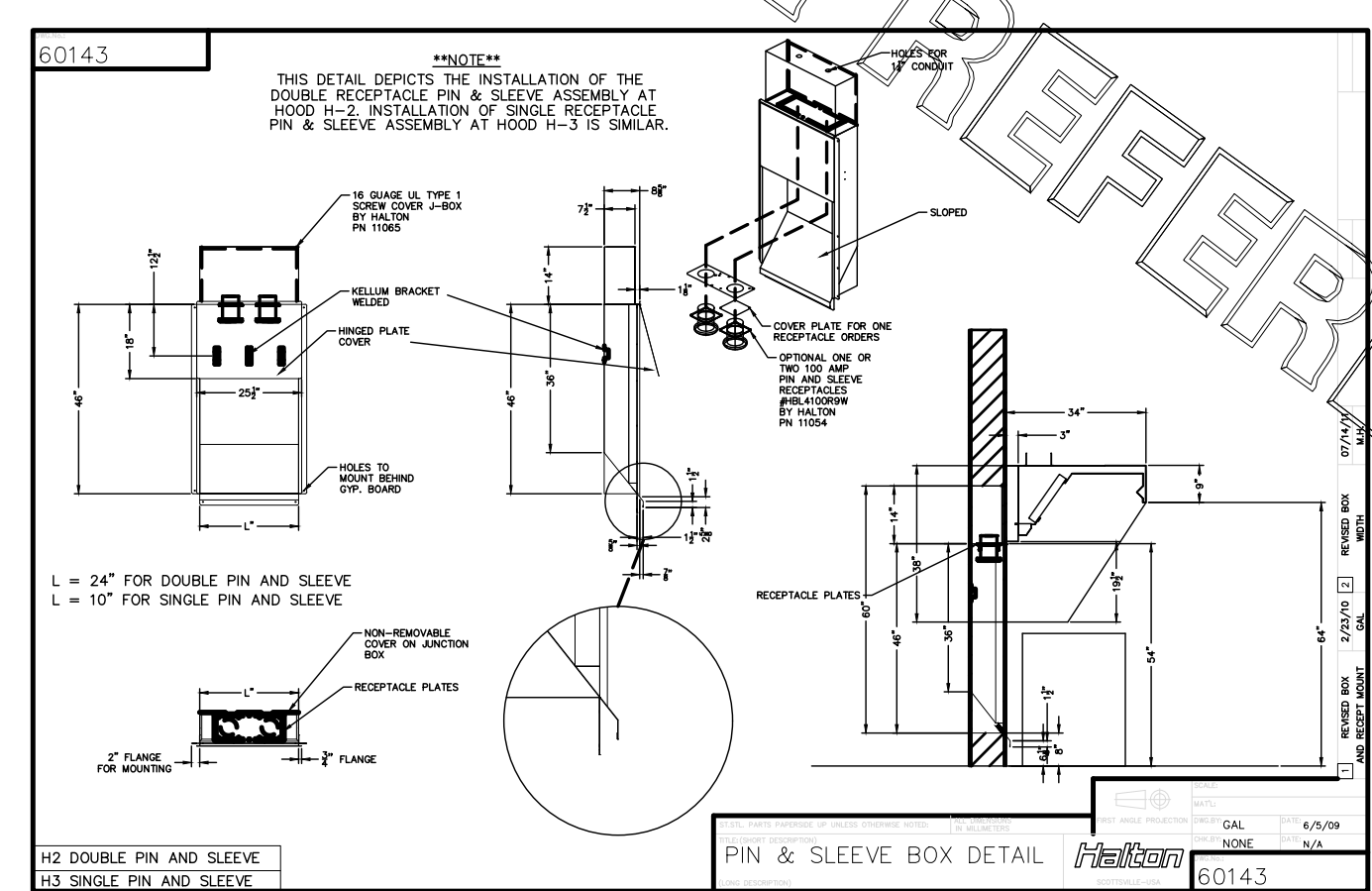
**Capture-Jet Fan Installation and Dimensional Data**

Front of Closures  
 CJ Intake  
 w/ Collar Fitting (Back side)

MODEL	AIR FLOW @1' SP	ØD	Ød	A	HP	FLA	VOLTAGE	LBS.
K4XL	30 CFM - 80 CFM	9.50"	4.0"	6.0"	.11	.75	120/1/60	6.6
K6XL	70 CFM - 170 CFM	13.20"	6.0"	6.0"	.20	1.31	120/1/60	10.6
K8XL	100 CFM - 240 CFM	13.20"	8.0"	6.0"	.20	1.32	120/1/60	11

TAG	MODEL	QTY	AIRFLOW
H-1	K6XL	1	113
H-2	K4XL	1	30

PROJECT: CHICK-FIL-A #1387 DATE: 10.08.18  
 LOCATION: WARRINGTON, PA DWG: U18-859-01



**Halton**

MODEL NO. SERIAL NO.

**Halton**

MODEL NO. SERIAL NO.

**Halton**

MODEL NO. SERIAL NO.

GENERAL REQUIREMENTS:  
 A. KEEP CLEARANCE TO THE CEILING SURFACE, SEE TABLE A TO FRONT  
 B. HOOD MUST BE INSTALLED AT THE CEILING SURFACE, SEE TABLE A TO FRONT  
 C. HOOD MUST BE INSTALLED AT THE CEILING SURFACE, SEE TABLE A TO FRONT  
 D. HOOD MUST BE INSTALLED AT THE CEILING SURFACE, SEE TABLE A TO FRONT  
 E. HOOD MUST BE INSTALLED AT THE CEILING SURFACE, SEE TABLE A TO FRONT  
 F. HOOD MUST BE INSTALLED AT THE CEILING SURFACE, SEE TABLE A TO FRONT  
 G. HOOD MUST BE INSTALLED AT THE CEILING SURFACE, SEE TABLE A TO FRONT

HALTON HOODS  
 - ETL LISTED PER LATEST 710 STANDARD  
 - BUILT PER NFPA 96  
 - NSF LISTED

THIS DRAWING MUST BE CHECKED, SIGNED AND RETURNED TO THE APPROPRIATE FACTORY. PLEASE VERIFYING THE FOLLOWING:  
 1. ALL DIMENSIONAL INFORMATION, MOUNTING POSITIONS  
 2. THE LOCATION AND TYPE OF COOKING EQUIPMENT.  
 NOTE TO APPROVER: ANY CHANGES IN COOKING EQUIPMENT SUCH AS INCREASED ENERGY INPUTS OR EQUIPMENT POSITION MAY AFFECT EXHAUST AIRFLOW. HALTON MUST BE NOTIFIED IF ANY OF THESE CHANGES OCCUR. A RECALCULATION EXHAUST AIRFLOW MAY BE REQUIRED.

APPROVED FOR FABRICATION: [Signature] WITH NO CHANGES [ ] WITH CHANGES AS NOTED [ ]  
 APPROVED BY: [Signature] DATE: [ ]

MAIL APPROVED DRAWINGS TO APPROPRIATE FACTORY BELOW: WWW.HALTONCOMPANY.COM

HALTON CO. (USA)  
 101 INDUSTRIAL DRIVE  
 SCOTTSVILLE, VA 42454  
 1-703-237-5600

HALTON CO. (CANADA)  
 1001 BREW PLACE 3R7  
 MISSISSAUGA, ON L4V 1Y1  
 1-905-624-0301

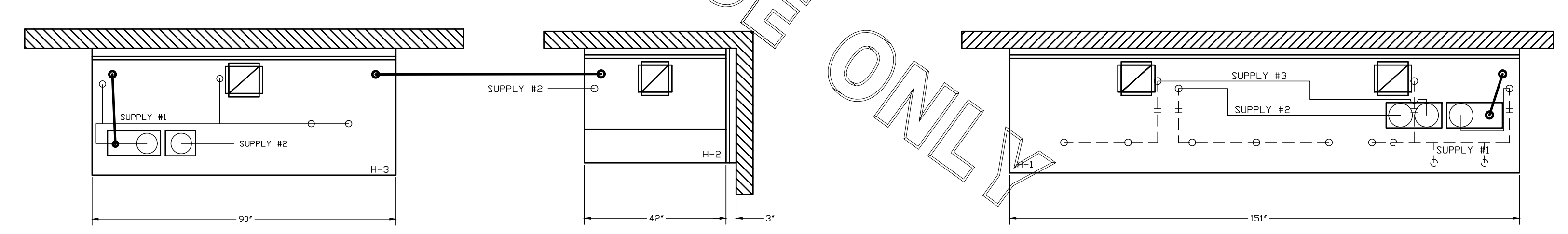
PROJECT: CHICK-FIL-A #1387 WARRINGTON CROSSING  
 LOCATION: WARRINGTON, PA  
 DRAWN BY: M.H.H. DATE: 10.08.18  
 SCALE: NTS  
 Halton Dwg: U18-859-01

REVISION DESCRIPTION

REV.	DATE	DESCRIPTION
1		
2		
3		
4		
5		
6		
7		

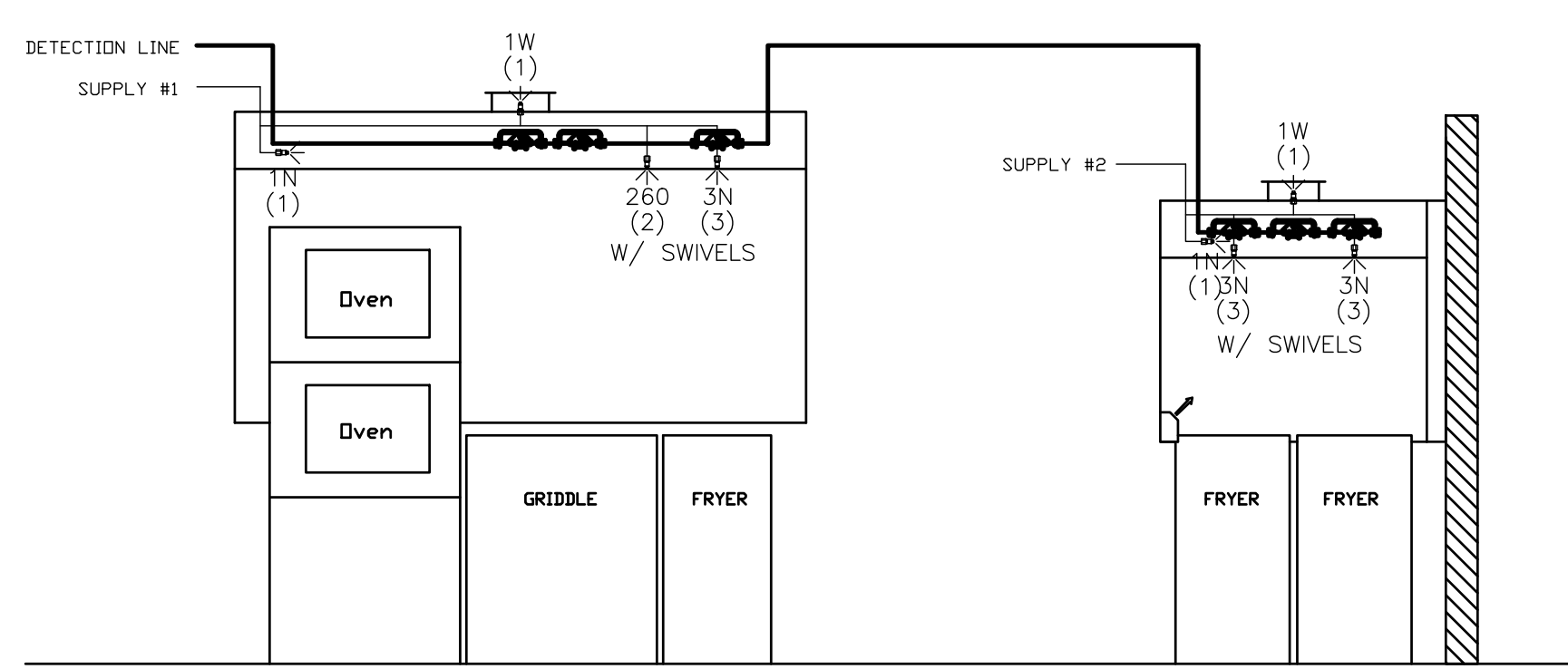
Sheet MHI

FOR REFERENCE ONLY

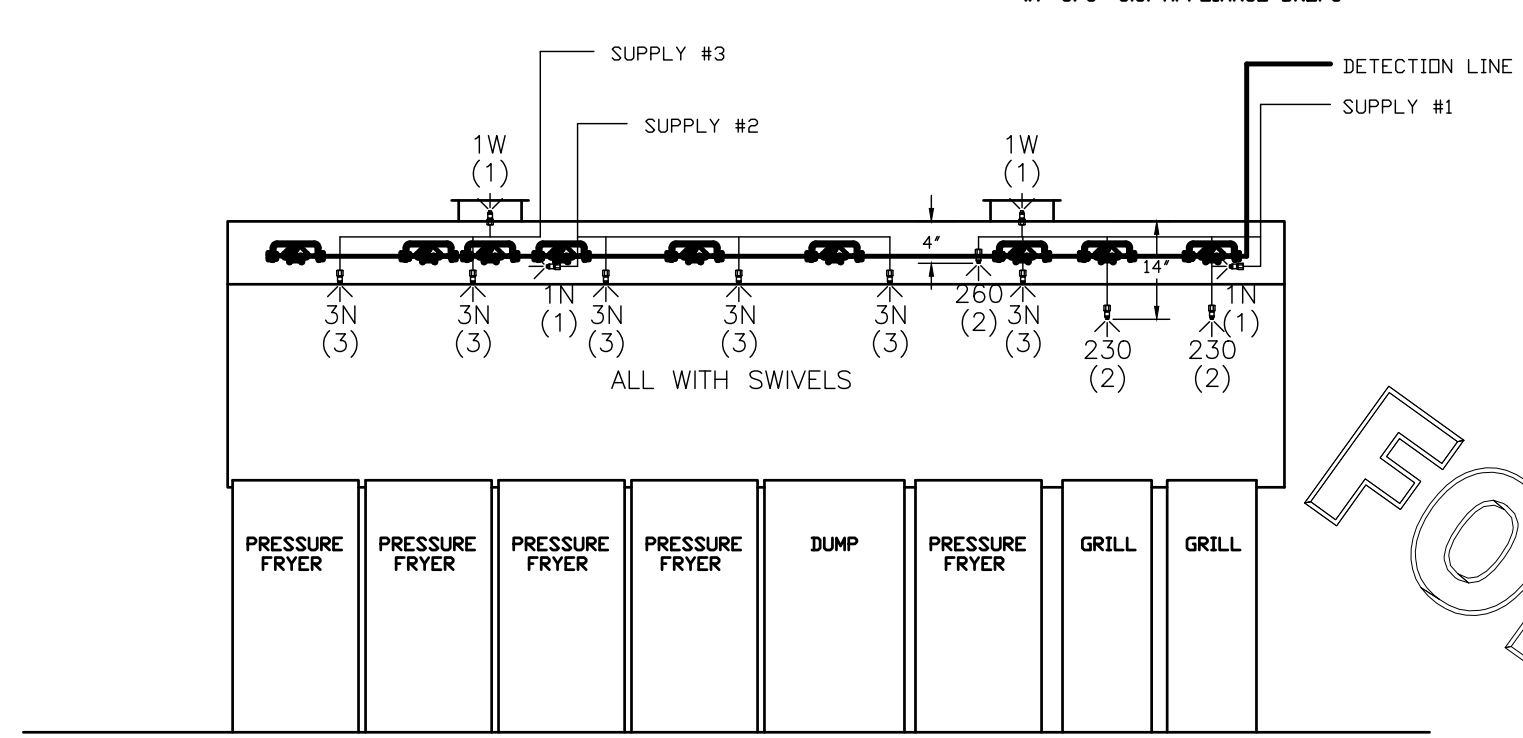


- ANSUL R-102 FIRE SYSTEM**
- (1) REGULATED RELEASE
  - (2) EXTRA MICRO SWITCH ASSEMBLIES (MOUNTED IN REG. REL.)
  - (3) SINGLE TANK ENCLOSURE
  - (4) 3 GALLON TANK
- A) 6 GALLON SYSTEM (2 TANKS)  
MOUNTED ON HOOD H-3  
(FOR HOOD H-2 & H-3)
- B) 3/8" BLACK IRON PIPING  
W/ 3/8" S.S. APPLIANCE DROPS

- ANSUL R-102 FIRE SYSTEM**
- (1) REGULATED RELEASE
  - (2) EXTRA MICRO SWITCH ASSEMBLIES (MOUNTED IN REG. REL.)
  - (3) DOUBLE TANK ENCLOSURE
  - (4) 3 GALLON TANKS
- A) 9 GALLON SYSTEM (3 TANKS)  
MOUNTED ON HOOD H-1  
(FOR HOOD H-1)
- B) 3/8" BLACK IRON PIPING  
W/ 3/8" S.S. APPLIANCE DROPS



ANSUL R-102 FIRE SYSTEM LAYOUT



ANSUL R-102 FIRE SYSTEM LAYOUT

**FUSIBLE LINK RATINGS**

ITEM	TEMP
OPEN FRYERS	450°
2 BURNER / FLAT TOP	450°
PRESSURE FRYERS	450°
GRILL	450°
EXHAUST COLLARS	450°

ANSUL R-102 FIRE SYSTEM NOTES  
THREE TANK SYSTEM MOUNTED ON TOP OF (H-1)  
MAXIMUM FLOW POINTS = 33

ANSUL R-102 FIRE SYSTEM NOTES  
TWO TANK SYSTEM MOUNTED ON TOP OF (H-3)  
MAXIMUM FLOW POINTS = 22

ITEM #	QTY	DESCRIPTION	FLOW PTS (TOTAL)
1W	4	DUCT NOZZLES	4
1N	4	PLENUM NOZZLES	4
230	2	APPLIANCE NOZZLES	4
3N	9	APPLIANCE NOZZLES	27
260	2	APPLIANCE NOZZLES	4
<b>TOTAL FLOW POINTS - 43</b>			

ITEM #	QTY	DESCRIPTION
#200	13	SERIES DETECTORS W/ FUSIBLE LINKS
#201	2	TERMINAL DETECTOR W/ FUSIBLE LINKS
#202	2	REGULATED RELEASE W/ DOUBLE POLE MICRO SWITCH
#203	5	3 GALLON TANKS
#204	1	SINGLE TANK ENCLOSURE
#205	1	DOUBLE TANK ENCLOSURE
#206	2	REMOTE PULL STATION

- ANSUL R-102 FIRE SYSTEM**  
UL LISTED PER STD LATEST STD 300
- FINAL INSTALLATION IS TO BE MADE IN ACCORDANCE WITH ALL APPLICABLE CODES
  - ALL ELECTRICAL COMPONENTS FOR EQUIPMENT SHUT DOWN TO BE PROVIDED BY THE ELECTRICIAN. MICRO-SWITCH INSTALLED IN REGULATED RELEASE BY ANSUL INSTALLER
  - REMOTE PULL STATION LOCATED PER MECHANICAL DRAWINGS

THIS DRAWING MUST BE CHECKED, SIGNED AND RETURNED TO THE APPROPRIATE FACTORY. PLEASE VERIFYING THE FOLLOWING:

- ALL DIMENSIONAL INFORMATION, MOUNTING POSITIONS
- THE LOCATION AND TYPE OF COOKING EQUIPMENT.

**NOTE TO APPROVER**  
ANY CHANGES IN COOKING EQUIPMENT SUCH AS INCREASED ENERGY INPUTS OR EQUIPMENT POSITION MAY AFFECT EXHAUST AIRFLOW. HALTON MUST BE NOTIFIED IF ANY OF THESE CHANGES OCCUR. A RECALCULATION EXHAUST AIRFLOW MAY BE REQUIRED.

REVISE AND RESUBMIT  
 WITH NO CHANGES  
 WITH CHANGES AS NOTED

APPROVED BY: \_\_\_\_\_ DATE: \_\_\_\_\_

---

MAIL APPROVED DRAWINGS TO APPROPRIATE FACTORY BELOW: WEBSITE: WWW.HALTONCOMPANY.COM

HALTON CO. (CANADA) 1001 BREWIK PLACE 3R7 MISSISSAUGA, ON L4X 1L7 1-905-624-0301	HALTON CO. (USA) 100 INDUSTRIAL DRIVE SCOTTSDALE, AZ 1-202-237-5600	BY: _____ DATE: _____ REVISION DESCRIPTION
REV. 1	---	---
REV. 2	---	---
REV. 3	---	---
REV. 4	---	---
REV. 5	---	---
REV. 6	---	---
REV. 7	---	---

---

PROJECT: CHICK-FIL-A #1387  
 WARRINGTON CROSSING  
 WARRINGTON, PA  
 LOCATION: WARRINGTON, PA  
 DRAWN BY: M.H. DATE: 10.08.18  
 SCALE: NTS  
 Halton Dwg: U18-859-02

**Halton**  
CARE FOR INDOOR AIR

MHI.2

Sheet