



INFINITY ENGINEERING
GROUP, LLC

Project #: 15-323
Project Name: 5/3rd - FIFTH THIRD BANK Union
Date: 09/17/2024
Description:

Reviewer: Sofiya Fidler/Violetta Offenberg

Submittal Name: Mini Split

Specification Number: 238126

Submittal Review Comments:

- Mount outdoor units on minimum 18" high nonisolated wind and seismic restraint rails. Use VMC group model # R-7000 or equivalent.
- Provide with thermostat interface PAC-US445CN-1(both units). Coordinate with IOT. Contact for IOT is Gerrienne Faulhaber /gerrienne@iofteam.com (224) 213-6908.
- Provide with condensate pump (both units, internal/external), confirm maximum lift distances to termination point.

- No Exceptions Taken**
 Approved as Noted
 Revise and Resubmit

This review is only for general conformance with the design concept and general compliance with the contract documents. Any action shown is subject to the requirements of the plans and specifications. The contractor assumes full responsibility for all substitutions. The contractor is responsible for dimensions, which shall be confirmed and correlated at the job site; the fabrication process and techniques of construction; of his work with that of the other trades and the satisfactory performance of his work.

Additional Notes:

Engineer approval is for design and specification compliance only. It is the sole responsibility of the installing contractor to provide quantity, style, and finish per the project requirements.

Fifth Third Union, Kentucky BC


Project 2401031

Submittal 23 57 60-000 Heat Pump Units

**Architectural Approval
Stamp & Comments**

**Engineer Approval
Stamp & Comments**

**Pepper Construction Approval
Stamp & Comments**

		
<input checked="" type="checkbox"/> REVIEWED FOR APPROVAL <input type="checkbox"/> REVIEWED AS NOTED FOR APPROVAL <input type="checkbox"/> FOR RECORD	Review of this shop drawing does not relieve the Architect, Engineer or Subcontractor of their contractual design responsibilities. Pepper Construction's review is not, nor is it responsible for, an engineering or architectural analysis of design elements, load or dimension calculations, or similar matters. The Subcontractor is responsible to furnish additional material or work as required by the Contract and review of these documents, as well as dimensions to be confirmed and correlated at the job site.	
JOB: 2401031	BY: Dylan Kopras	DATE: 9/5/2024
SUBMITTAL# 23 57 60-000	Rev # 000	

Notes & Comments:

Please see attached submittal for the heat pump units involved for this project.



PEAD-A24AA9 & PUZ-A24NHA7
MID STATIC HORIZONTAL-DUCTED INDOOR UNIT
24,000 BTU/H HEAT PUMP UNIVERSAL OUTDOOR



Job Name:

System Reference:

Date:



Indoor Unit.....PEAD-A24AA9

Outdoor Unit.....PUZ-A24NHA7

INDOOR UNIT FEATURES

- Unobtrusive ceiling-concealed design for short-run ductwork
- Wide ranging external static pressure (0.14-0.60 in. WG)
- Built-in condensate lift mechanism (up to 27-9/16")
- Auto fan speed mode
- Optional FB Series filter boxes for easy access and service
- Ideal for residential homes, retail shopping centers, larger classrooms, office complexes, conference rooms, ballrooms, fitness centers, and more
- Multiple control options available:
 - kumo cloud® smart device app for remote access
 - Third-party interface options
 - Wired or wireless controllers

OUTDOOR UNIT FEATURES

- Variable speed INVERTER-driven compressor
- Pre-charged with refrigerant volume for piping length up to 70 ft
- Low ambient cooling down to 0°F providing 100% capacity
- 24-hour continuous operation (cooling mode)
- High pressure protection
- Fast restart
- Superior energy and operational efficiency
- Seacoast protection*
 - External Outer Panel: Phosphate coating + Acrylic-Enamel coating
 - Fan Motor Support: Epoxy resin coating (at edge face)
 - Separator Assembly Valve Bed: Epoxy resin coating (at edge face)
 - Blue Fin treatment is an anti-corrosion treatment that is applied to the Heat exchanger coil to protect it against airborne contaminants.
 - Heat exchanger coil and base panel rated for 2,000 hours in accordance with ASTM B117 testing

*Seacoast protection standard from 2022 production

SPECIFICATIONS: PEAD-A24AA9 & PUZ-A24NHA7

Cooling at 95°F ¹	Maximum Capacity	BTU/H	24,000
	Rated Capacity	BTU/H	24,000
	Minimum Capacity	BTU/H	9,900
	Maximum Power Input	W	1,960
	Rated Power Input	W	1,960
	Moisture Removal	Pints/h	6.9
	Sensible Heat Factor		0.68
Heating at 47°F ²	Power Factor [208V / 230V]	%	92.0 / 92.0
	Maximum Capacity	BTU/H	28,000
	Rated Capacity	BTU/H	26,000
	Minimum Capacity	BTU/H	10,000
	Maximum Power Input	W	2,240
	Rated Power Input	W	1,790
Heating at 17°F ³	Power Factor [208V / 230V]	%	92.0 / 92.0
	Maximum Capacity	BTU/H	15,800
	Rated Capacity	BTU/H	15,800
	Maximum Power Input	W	1,730
Heating at 5°F ⁴	Rated Power Input	W	1,730
	Maximum Capacity	BTU/H	14,300
Heating at -4°F ⁵	Maximum Power Input	W	1,920
	Maximum Capacity	BTU/H	12,200
Efficiency	SEER2		20.1
	EER2 ¹		12.2
	HSPF2 [IV]		9.3
	COP at 47°F ²		4.2
	COP at 17°F at Maximum Capacity ³		2.6
	COP at 5°F at Maximum Capacity ⁴		2.2
	COP at -4°F at Maximum Capacity ⁵		2.1
	ENERGY STAR® Certified		Yes
Electrical	Voltage, Phase, Frequency		208/230, 1, 60
	Guaranteed Voltage Range	V AC	187 - 253
	Voltage: Indoor - Outdoor, S1-S2	V AC	208/230
	Voltage: Indoor - Outdoor, S2-S3	V DC	24
	Short-circuit Current Rating [SCCR]	kA	5
	Recommended Fuse/Breaker Size (Outdoor)	A	25
	Recommended Wire Size [Indoor - Outdoor]	AWG	14
	Power Supply		Indoor unit is powered by the outdoor unit
Indoor Unit	MCA	A	2.25
	Fan Motor Full Load Amperage	A	1.80
	Fan Motor Output	W	121
	Fan Motor Type		DC Motor
	Airflow Rate at Cooling, Dry	CFM	512-565-636-742
	Airflow Rate at Heating, Dry	CFM	512-565-636-742
	Sound Pressure Level [Cooling]	dB[A]	27-29-31-35
	Sound Pressure Level [Heating]	dB[A]	27-29-31-35
	External Static Pressure	in. WG	0.14-0.2-0.28-0.4-0.6
	Drain Pipe Size	In. [mm]	1-1/4 [32]
	Condensate Lift Mechanism, Maximum Distance	In. [mm]	27-9/16 [700]
	Coating on Heat Exchanger		—
	External Finish Color		Galvanized
	Unit Dimensions	W x D x H: In. [mm]	43-5/16 x 28-7/8 x 9-7/8 [1,100 x 732 x 250]
	Package Dimensions	W x D x H: In. [mm]	53-15/16 x 35-7/16 x 13 [1,370 x 900 x 330]
	Unit Weight	Lbs. [kg]	67 [30]
Package Weight	Lbs. [kg]	78 [35]	
Indoor Unit Operating Temperature Range	Cooling Intake Air Temp [Maximum / Minimum]*	°F	95 DB, 71 WB / 67 DB, 57 WB
	Heating Intake Air Temp [Maximum / Minimum]	°F	80 DB / 70 DB

NOTES:

AHRI Rated Conditions

(Rated data is determined at a fixed compressor speed)

¹Cooling (Indoor // Outdoor)

²Heating at 47°F (Indoor // Outdoor)

³Heating at 17°F (Indoor // Outdoor)

°F 80 DB, 67 WB // 95 DB, 75 WB

°F 70 DB, 60 WB // 47 DB, 43 WB

°F 70 DB, 60 WB // 17 DB, 15 WB

Conditions

⁴Heating at 5°F (Indoor // Outdoor)

°F 70 DB, 60 WB // 5 DB, 4 WB

*Indoor/Outdoor Unit Operating Temperature Range (Cooling Air Temp [Maximum / Minimum]):

- Applications should be restricted to comfort cooling only; equipment cooling applications are not recommended for low ambient temperature conditions.
 - » Wind baffles required to operate below 23°F DB in cooling mode.
 - » Heat pump system with wind baffle: 0°F - 115°F.
 - » Refer to wind baffle documentation for further information.

**Outdoor Unit Operating Temperature Range (Cooling Thermal Lock-out / Re-start Temperatures; Heating Thermal Lock-out / Re-start Temperatures):

- System cuts out in heating mode to avoid thermistor error and automatically restarts at these temperatures.

***Blue Fin Coating Standard from 2022 production:

- PU(Y/Z)-A(12/18)NKA7 - Beginning with serial number 12U*****
- PU(Y/Z)-A(24/30/36/42)NKA7 - Beginning with serial number 12U*****

INDOOR UNIT ACCESSORIES: PEAD-A24AA9

Control Interface	3-Pin Connector	<input type="checkbox"/> PAC-715AD
	Airzone Wired Blueface Principal Controller White	<input type="checkbox"/> AZZBSBLUEZEROCB
	Airzone Wired Lite Controller White	<input type="checkbox"/> AZZBSLITECB
	Airzone Wireless Lite Controller White	<input type="checkbox"/> AZZBSLITERB
	Airzone Wireless Think Controller White	<input type="checkbox"/> AZZBSTHINKRB
	CN24 Relay Kit	<input type="checkbox"/> CN24RELAY-KIT-CM3
	Deluxe Wired MA Remote Controller	<input type="checkbox"/> PAR-41MAAU
	IT Extender	<input type="checkbox"/> PAC-WHS01IE-E
	kumo station® for kumo cloud®	<input type="checkbox"/> PAC-WHS01HC-E
	Procon BACnet® and Modbus® Interface	<input type="checkbox"/> PAC-UKPRC001-CN-1
	Remote Operation Adapter†	<input type="checkbox"/> PAC-SF40RM-E
	Thermostat Interface	<input type="checkbox"/> PAC-US445CN-1
	USNAP Adapter	<input type="checkbox"/> PAC-WHS01UP-E
	Wireless Interface for kumo cloud®	<input type="checkbox"/> PAC-USWHS002-WF-2
Remote Sensor	Flush Mount Remote Temperature Sensor	<input type="checkbox"/> PAC-USSEEN002-FM-1
	Remote Temperature Sensor	<input type="checkbox"/> PAC-SE41TS-E
	Wireless temperature and humidity sensor for kumo cloud®	<input type="checkbox"/> PAC-USWHS003-TH-1
Wired Remote Controller	Simple Ductless Wired Remote Controller	<input type="checkbox"/> PAC-SDW01RC-1
	Simple MA Remote Controller†	<input type="checkbox"/> PAC-YT53CRAU-J
	Touch MA Controller†	<input type="checkbox"/> PAR-CT01MAU-SB
Wireless Remote Controller	kumo touch™ RedLINK™ Wireless Controller	<input type="checkbox"/> MHK2
	Lockdown bracket for remote controller	<input type="checkbox"/> RCMKP1CB
	Wireless MA Receiver	<input type="checkbox"/> PAR-FA32MA-W
	Wireless MA Remote Controller	<input type="checkbox"/> PAR-FL32MA-E
Condensate	Blue Diamond (Advanced) Mini Condensate Pump w/ Reservoir & Sensor (208/230V) [recommended]	<input type="checkbox"/> X87-721
	Blue Diamond (MegaBlue Advanced) Condensate Pump w/ Reservoir & Sensor	<input type="checkbox"/> X87-835
	Blue Diamond Sensor Extension Cable — 15 Ft.	<input type="checkbox"/> C13-103
	Refco Condensate Pump (100-240 VAC) up to 120,000 BTU/H	<input type="checkbox"/> COMBI
Control Wire	20/2PR, 1PR shielded + 1PR plenum wire for Airzone, 100 ft reel	<input type="checkbox"/> CW2042S2-100
	20/2PR, shielded + 1PR plenum wire for Airzone, 500 ft reel	<input type="checkbox"/> CW2042S2-500
Disconnect Switch	(30A/600V/UL) [fits 2" X 4" utility box] - Black	<input type="checkbox"/> TAZ-MS303
	(30A/600V/UL) [fits 2" X 4" utility box] - White	<input type="checkbox"/> TAZ-MS303W
Filter Box	Filter Box with MERV 13 Filter	<input type="checkbox"/> FBM2-3-A
Lineset	10' x 3/8" x 10' x 5/8" Lineset (Twin-Tube Insulation)	<input type="checkbox"/> MPLS385812T-10
	100' x 3/8" x 100' x 5/8" Lineset (Twin-Tube Insulation)	<input type="checkbox"/> MPLS385812T-100
	15' x 3/8" x 15' x 5/8" Lineset (Twin-Tube Insulation)	<input type="checkbox"/> MPLS385812T-15
	30' x 3/8" x 30' x 5/8" Lineset (Twin-Tube Insulation)	<input type="checkbox"/> MPLS385812T-30
	50' x 3/8" x 50' x 5/8" Lineset (Twin-Tube Insulation)	<input type="checkbox"/> MPLS385812T-50
	65' x 3/8" x 65' x 5/8" Lineset (Twin-Tube Insulation)	<input type="checkbox"/> MPLS385812T-65

NOTES:

†PAC-SF40RM-E (Unable to use with wireless remote controller)

OUTDOOR UNIT ACCESSORIES: PUZ-A24NHA7

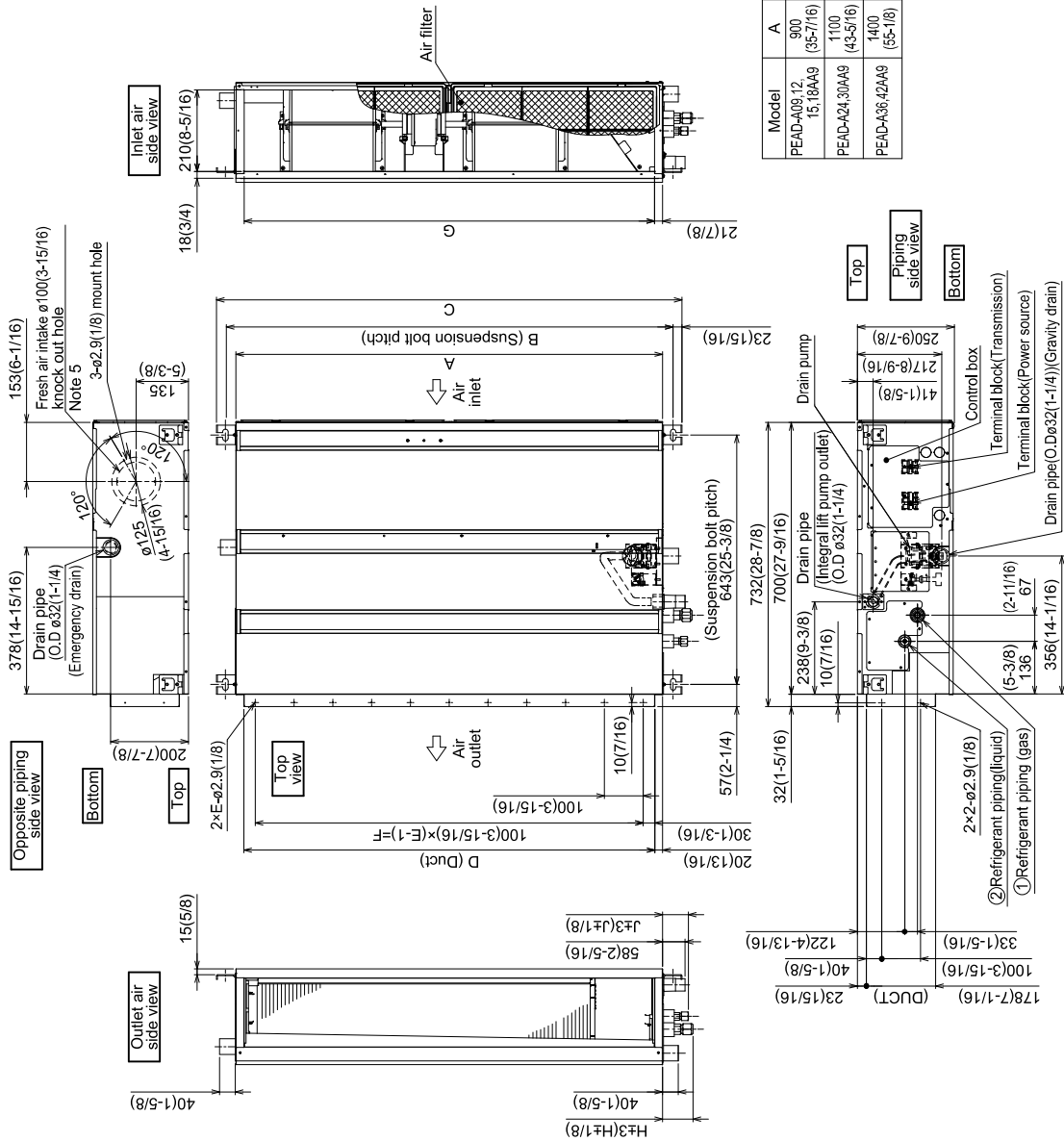
Air Outlet Guide	Air Outlet Guide (1 Piece)	<input type="checkbox"/> PAC-SG59SG-E
Centralized Drain Pan	Drain Pan	<input type="checkbox"/> PAC-SG64DP-E
Control/Service Tool	Control/Service Tool	<input type="checkbox"/> PAC-SK52ST
	M- & P-Series Maintenance Tool Cable Set	<input type="checkbox"/> M21EC0397
	USB/UART Conversion Cable (Required for all laptop connection)	<input type="checkbox"/> M21EC1397
Hail Guards	Hail Guard	<input type="checkbox"/> HG-A6
M-NET Converter	M-NET Converter	<input type="checkbox"/> PAC-SJ85MA-E
	M-NET Converter	<input type="checkbox"/> PAC-SJ95MA-E
Mini-Split Wire	14 Gauge, 4 wire MiniSplit Cable—250 ft. roll	<input type="checkbox"/> S144-250
	14 Gauge, 4 wire MiniSplit Cable—250 ft. roll	<input type="checkbox"/> SW144-250
	14 Gauge, 4 wire MiniSplit Cable—50 ft. roll	<input type="checkbox"/> S144-50
	14 Gauge, 4 wire MiniSplit Cable—50 ft. roll	<input type="checkbox"/> SW144-50
	16 Gauge, 4 wire MiniSplit Cable—250 ft. roll	<input type="checkbox"/> S164-250
	16 Gauge, 4 wire MiniSplit Cable—250 ft. roll	<input type="checkbox"/> SW164-250
	16 Gauge, 4 wire MiniSplit Cable—50 ft. roll	<input type="checkbox"/> S164-50
	16 Gauge, 4 wire MiniSplit Cable—50 ft. roll	<input type="checkbox"/> SW164-50
Mounting Pad	Condensing Unit Mounting Pad: 24" x 42" x 3"	<input type="checkbox"/> ULTRILITE2
Snow/Rain Diverter	Snow/Rain Diverter	<input type="checkbox"/> SRD-4
Stand	18" Single Fan Stand	<input type="checkbox"/> QSMS1801M
	24" Single Fan Stand	<input type="checkbox"/> QSMS2401M
	Condenser Wall Bracket	<input type="checkbox"/> QSWB2000M-1
	Condenser Wall Bracket - Stainless Steel Finish	<input type="checkbox"/> QSWBSS
	Outdoor Unit Stand — 12" High	<input type="checkbox"/> QSMS1201M
Wind Baffle	Front Wind Baffle	<input type="checkbox"/> WB-PA5
	Rear Wind Baffle	<input type="checkbox"/> WB-RE5
	Side Advanced Wind Baffle	<input type="checkbox"/> WB-SD5

INDOOR UNIT DIMENSIONS: PEAD-A24AA9

INDOOR UNIT

PEAD-A09, 12, 15, 18, 24, 30, 36, 42AA9

- Notes
1. Use an M10 screw for the suspension bolt (field supply).
 2. Keep the service space for maintenance at the bottom.
 3. This drawing is for PEAD-A09-12-15-18-24-30AA9 models, which have 2 fans. PEAD-A36-42AA9 models have 3 fans.
 4. If the inlet duct is used, remove the air filter (supplied with the unit), then install the filter (field supply) at the suction side.
 5. Heat air to 0°C(32°F) or higher when taking fresh air with a fresh air intake.



Model	J	① Gas pipe		② Liquid pipe	
		ø	(in)	ø	(in)
PEAD-A09AA9	62	ø9.52	(3/8)	ø6.35	(1/4)
PEAD-A12, 15, 18AA9	66	ø12.7	(1/2)	ø9.52	(3/8)
PEAD-A24, 30AA9	66	ø15.88	(5/8)	ø9.52	(3/8)
PEAD-A36, 42AA9	66	ø15.88	(5/8)	ø9.52	(3/8)

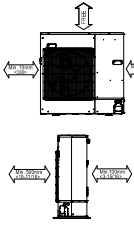
Model	Unit:mm(in.)										
	A	B	C	D	E	F	G	H			
PEAD-A09, 12, 15, 18AA9	900	954	1000	860	860	800	858	72			
	(35-7/16)	(37-9/16)	(39-3/8)	(33-7/8)	(33-7/8)	(31-1/2)	(33-13/16)	(2-7/8)			
PEAD-A24, 30AA9	1100	1154	1200	1060	1060	1000	1058	78			
	(43-5/16)	(45-7/16)	(47-1/4)	(41-3/4)	(41-3/4)	(39-3/8)	(41-11/16)	(3-1/8)			
PEAD-A36, 42AA9	1400	1454	1500	1360	1360	1300	1358	84			
	(55-1/8)	(57-1/4)	(59-1/16)	(53-9/16)	(53-9/16)	(51-3/16)	(53-1/2)	(3-1/8)			

OUTDOOR UNIT DIMENSIONS: PUZ-A24NHA7

Unit: mm<in>

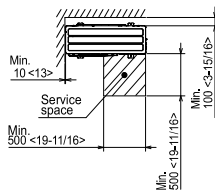
1 FREE SPACE (Around the unit)

The diagram below shows a basic example. Explanation of particular details are given in the installation manuals etc.



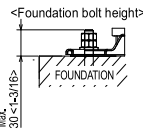
2 SERVICE SPACE

Dimensions of space needed for service access are shown in the below diagram.



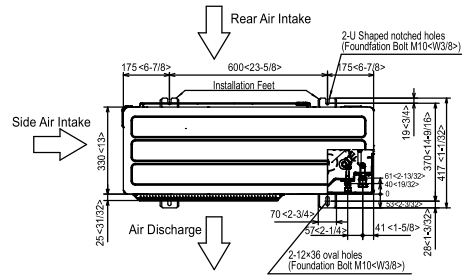
3 FOUNDATION BOLTS

Please secure the unit firmly with 4 foundation (M10<W3/8>) bolts. (Bolts and washers must be purchased locally.)



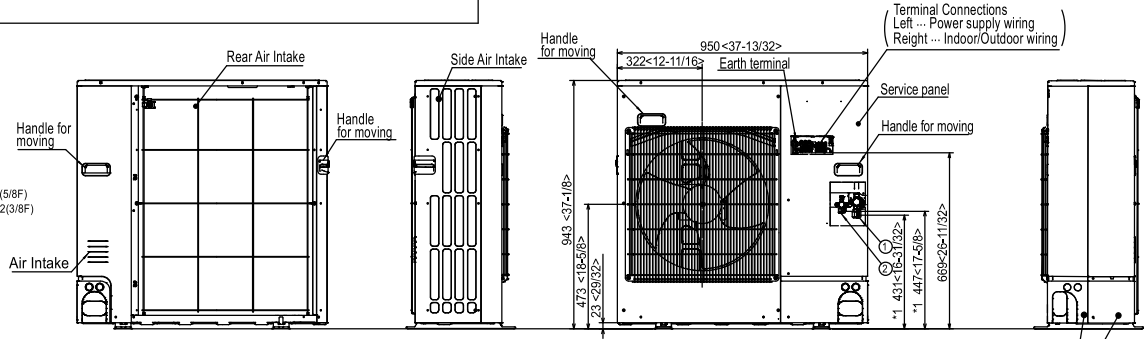
4 PIPING-WIRING DIRECTIONS

Piping and wiring connections can be made from 4 directions: FRONT, Right, Rear and Below.

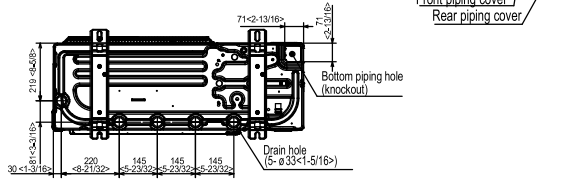
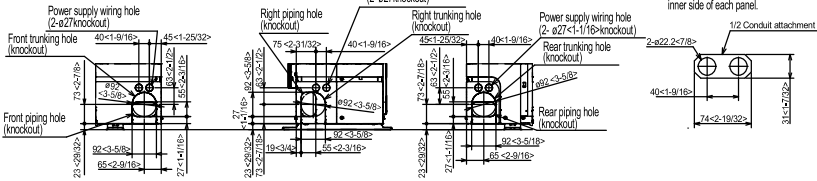


Example of Notes

- ① --- Refrigerant GAS pipe connection (FLARE) ø15.88(5/8F)
- ② --- Refrigerant LIQUID pipe connection (FLARE) ø9.52(3/8F)
- *1 --- Indication of STOP VALVE connection location.



Piping knockout Hole Details



1340 Satellite Boulevard Suwanee, GA 30024
Toll Free: 800-433-4822 www.mehvac.com



FORM# PEAD-A24AA9 & PUZ-A24NHA7 - 202404

Specifications are subject to change without notice.

© 2024 Mitsubishi Electric Trane HVAC US LLC. All rights reserved.

Fifth Third Union, Kentucky BC


Project 2401031

Submittal 23 57 60-000 Heat Pump Units

**Architectural Approval
Stamp & Comments**

**Engineer Approval
Stamp & Comments**

**Pepper Construction Approval
Stamp & Comments**

		
<input checked="" type="checkbox"/> REVIEWED FOR APPROVAL <input type="checkbox"/> REVIEWED AS NOTED FOR APPROVAL <input type="checkbox"/> FOR RECORD	Review of this shop drawing does not relieve the Architect, Engineer or Subcontractor of their contractual design responsibilities. Pepper Construction's review is not, nor is it responsible for, an engineering or architectural analysis of design elements, load or dimension calculations, or similar matters. The Subcontractor is responsible to furnish additional material or work as required by the Contract and review of these documents, as well as dimensions to be confirmed and correlated at the job site.	
JOB: 2401031	BY: Dylan Kopras	DATE: 9/5/2024
SUBMITTAL# 23 57 60-000	Rev # 000	

Notes & Comments:

Please see attached submittal for the heat pump units involved for this project.



PKA-A18LA1 & PUZ-A18NKA7
18,000 BTU/H WALL MOUNT
18,000 BTU/H HEAT PUMP UNIVERSAL OUTDOOR



Job Name:

System Reference:

Date:



Indoor Unit.....PKA-A18LA1

Outdoor Unit.....PUZ-A18NKA7



INDOOR UNIT FEATURES

- Selectable high sensible vs high latent capacity mode
- UL 60335-2-40 compliant
- Sleek, compact design
- Simple installation
- Airflow direction control
- Auto fan mode
- Suitable for: server rooms, daycare centers, classrooms, churches, small offices, and more
- Multiple control options available:
 - kumo cloud® smart device app for remote access
 - Third-party interface options
 - Wired or wireless controllers

OUTDOOR UNIT FEATURES

- Variable speed INVERTER-driven compressor
- Pre-charged with refrigerant volume for piping length up to 70 ft
- Low ambient cooling down to 0°F providing 100% capacity
- 24-hour continuous operation (cooling mode)
- High pressure protection
- Fast restart
- Superior energy and operational efficiency
- Seacoast protection*
 - External Outer Panel: Phosphate coating + Acrylic-Enamel coating
 - Fan Motor Support: Epoxy resin coating (at edge face)
 - Separator Assembly Valve Bed: Epoxy resin coating (at edge face)
 - Blue Fin treatment is an anti-corrosion treatment that is applied to the Heat exchanger coil to protect it against airborne contaminants.
 - Heat exchanger coil and base panel rated for 2,000 hours in accordance with ASTM B117 testing

*Seacoast protection standard from 2022 production

SPECIFICATIONS: PKA-A18LA1 & PUZ-A18NKA7

Cooling at 95°F ¹	Maximum Capacity	BTU/H	18,000
	Rated Capacity	BTU/H	18,000
	Minimum Capacity	BTU/H	5,600
	Maximum Power Input	W	1,680
	Rated Power Input	W	1,680
	Moisture Removal	Pints/h	5.8
	Sensible Heat Factor		0.73
Heating at 47°F ²	Maximum Capacity	BTU/H	22,000
	Rated Capacity	BTU/H	19,000
	Minimum Capacity	BTU/H	5,400
	Maximum Power Input	W	2,150
	Rated Power Input	W	1,640
	Power Factor [208V / 230V]	%	96.7 / 96.7
Heating at 17°F ³	Maximum Capacity	BTU/H	13,600
	Rated Capacity	BTU/H	13,600
	Maximum Power Input	W	1,560
	Rated Power Input	W	1,560
Efficiency	SEER2		20.2
	EER2 ¹		10.7
	HSPF2 [IV]		9.2
	COP at 47°F ²		3.4
	COP at 17°F at Maximum Capacity ³		2.5
	ENERGY STAR [®] Certified		No
Electrical	Voltage, Phase, Frequency		208/230, 1, 60
	Guaranteed Voltage Range	V AC	198 - 253
	Voltage: Indoor - Outdoor, S1-S2	V AC	208/230
	Voltage: Indoor - Outdoor, S2-S3	V DC	24
	Short-circuit Current Rating [SCCR]	kA	5
	Recommended Fuse/Breaker Size (Outdoor)	A	15
	Recommended Wire Size [Indoor - Outdoor]	AWG	14
	Power Supply		Indoor unit is powered by the outdoor unit
Indoor Unit	MCA	A	1.0
	Fan Motor Full Load Amperage	A	0.19
	Fan Motor Output	W	30
	Fan Motor Type		DC Motor
	Airflow Rate at Cooling, Dry	CFM	265–310–375–450
	Airflow Rate at Cooling, Wet	CFM	215–255–320–375
	Airflow Rate at Heating, Dry	CFM	265–310–385–455
	Sound Pressure Level [Cooling]	dB[A]	34–39–44–48
	Sound Pressure Level [Heating]	dB[A]	34–39–44–48
	Drain Pipe Size	In. [mm]	5/8 [16]
	Coating on Heat Exchanger		—
	External Finish Color		White Munsell 0.7PB 9.2/0.4
	Unit Dimensions	W x D x H: In. [mm]	35-23/64 x 9-11/32 x 11-25/32 [898 x 237 x 299]
	Package Dimensions	W x D x H: In. [mm]	38-3/16 x 13-25/64 x 14-11/64 [970 x 340 x 360]
Unit Weight	Lbs. [kg]	28 [12.7]	
Package Weight	Lbs. [kg]	32 [14.4]	
Indoor Unit Operating Temperature Range	Cooling Intake Air Temp [Maximum / Minimum]*	°F	90 DB, 73 WB / 66 DB, 59 WB
	Heating Intake Air Temp [Maximum / Minimum]	°F	82 DB / 50 DB

NOTES:

AHRI Rated Conditions (Rated data is determined at a fixed compressor speed)	¹ Cooling (Indoor // Outdoor)	°F	80 DB, 67 WB // 95 DB, 75 WB
	² Heating at 47°F (Indoor // Outdoor)	°F	70 DB, 60 WB // 47 DB, 43 WB
	³ Heating at 17°F (Indoor // Outdoor)	°F	70 DB, 60 WB // 17 DB, 15 WB
Conditions	⁴ Heating at 5°F (Indoor // Outdoor)	°F	70 DB, 60 WB // 5 DB, 4 WB

Select high sensible versus high latent capacity mode via function setting mode 08, "Fan speed" (accessible through Touch MA, Deluxe MA, kumo touch and kumo cloud app control options):

- "High ceiling" mode = high sensible capacity
 - » Mode 08, setting 3 (factory default)
- "Standard" mode = high latent capacity
 - » Mode 08, setting 2

*Outdoor Unit Operating Temperature Range (Cooling Air Temp (Maximum / Minimum)):

- Wind baffles required to operate below 23°F DB in cooling mode.
- Heat pump system with wind baffle: 0°F - 115°F.
- Refer to wind baffle documentation for further information.

**Outdoor Unit Operating Temperature Range (Cooling Thermal Lock-out / Re-start Temperatures; Heating Thermal Lock-out / Re-start Temperatures):

- System cuts out in heating mode to avoid thermistor error and automatically restarts at these temperatures.

***Blue Fin Coating Standard from 2022 production:

- PU(Y/Z)-A(12/18)NKA7 - Beginning with serial number 12U*****
- PU(Y/Z)-A(24/30/36/42)NKA7 - Beginning with serial number 12U*****

INDOOR UNIT ACCESSORIES: PKA-A18LA1

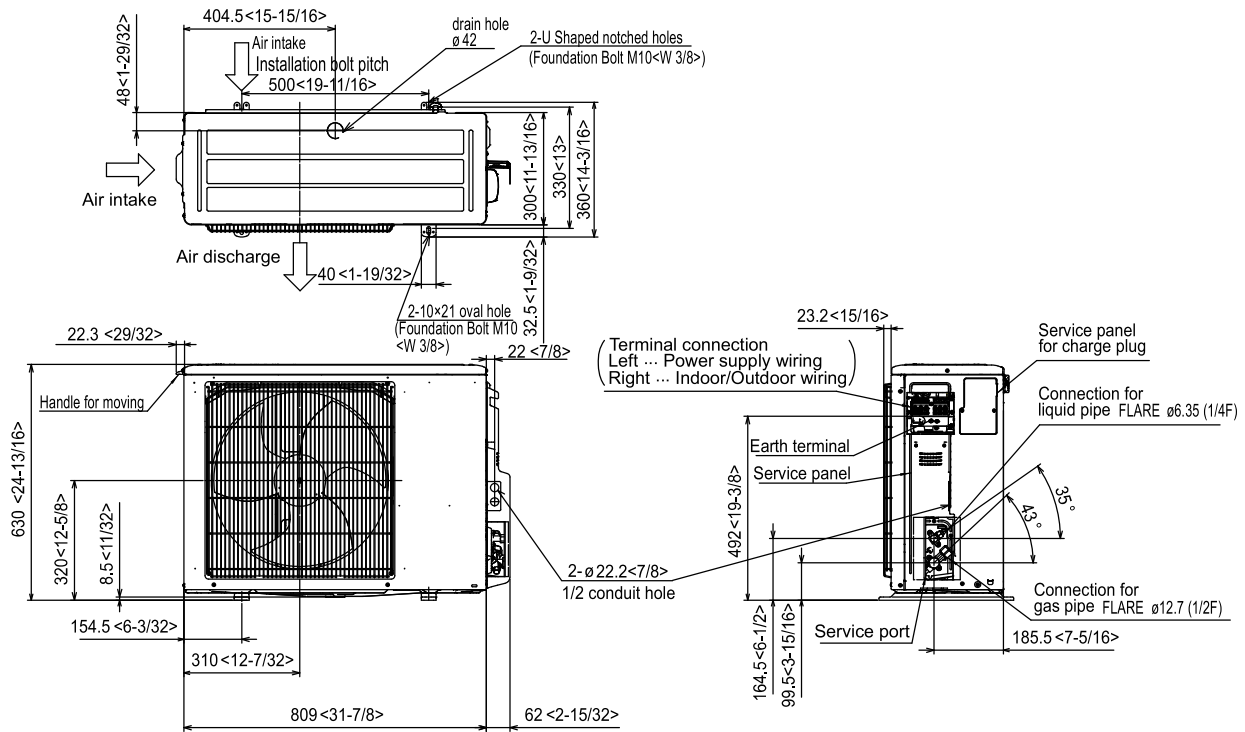
Control Interface	3-Pin Connector	<input type="checkbox"/> PAC-715AD
	IT Extender	<input type="checkbox"/> PAC-WHS01IE-E
	kumo station® for kumo cloud®	<input type="checkbox"/> PAC-WHS01HC-E
	Procon BACnet® and Modbus® Interface	<input type="checkbox"/> PAC-UKPRC001-CN-1
	Thermostat Interface	<input type="checkbox"/> PAC-US445CN-1
	USNAP Adapter	<input type="checkbox"/> PAC-WHS01UP-E
	Wireless Interface for kumo cloud®	<input type="checkbox"/> PAC-USWHS002-WF-2
Remote Sensor	Flush Mount Remote Temperature Sensor	<input type="checkbox"/> PAC-USSEN002-FM-1
	Flush Mount Temperature Sensor	<input type="checkbox"/> PAC-USSEN001-FM-1
	Remote Temperature Sensor	<input type="checkbox"/> PAC-SE41TS-E
	Wireless temperature and humidity sensor for kumo cloud®	<input type="checkbox"/> PAC-USWHS003-TH-1
Wired Remote Controller	DeLuxe Wired MA Remote Controller†	<input type="checkbox"/> PAR-40MAAU
	Simple Ductless Wired Remote Controller	<input type="checkbox"/> PAC-SDW01RC-1
	Simple MA Remote Controller†	<input type="checkbox"/> PAC-YT53CRAU-J
	Touch MA Controller†	<input type="checkbox"/> PAR-CT01MAU-SB
Wireless Remote Controller	kumo touch™ RedLINK™ Wireless Controller	<input type="checkbox"/> MHK2
	Lockdown bracket for remote controller	<input type="checkbox"/> RCMKP1CB
	Wireless MA Remote Controller	<input type="checkbox"/> PAR-FL32MA-E
Condensate	Blue Diamond (Advanced) Mini Condensate Pump w/ Reservoir & Sensor (208/230V) [recommended]	<input type="checkbox"/> X87-721
	Blue Diamond (MicroBlue) Mini Condensate Pump (110/208/230V) up to 18,000 BTU/H	<input type="checkbox"/> X86-003
	Blue Diamond Sensor Extension Cable — 15 Ft.	<input type="checkbox"/> C13-103
	Drain Pan Level Sensor/Control	<input type="checkbox"/> SS610E
	Fascia Kit for MicroBlue Pump, mounts the MicroBlue and sensor directly beneath indoor unit	<input type="checkbox"/> T18-016
	Refco Condensate Pump (100-240 VAC)	<input type="checkbox"/> GOBI-II
	Refco Condensate Pump (100-240 VAC) up to 120,000 BTU/H	<input type="checkbox"/> COMBI
Disconnect Switch	(30A/600V/UL) [fits 2" X 4" utility box] - Black	<input type="checkbox"/> TAZ-MS303
	(30A/600V/UL) [fits 2" X 4" utility box] - White	<input type="checkbox"/> TAZ-MS303W
Lineset	100' x 1/4" x 100' / 1/2" Lineset (Twin-Tube Insulation)	<input type="checkbox"/> MLS141212T-100
	15' x 1/4" x 15' / 1/2" Lineset (Twin-Tube Insulation)	<input type="checkbox"/> MLS141212T-15
	30' x 1/4" x 30' / 1/2" Lineset (Twin-Tube Insulation)	<input type="checkbox"/> MLS141212T-30
	50' x 1/4" x 50' / 1/2" Lineset (Twin-Tube Insulation)	<input type="checkbox"/> MLS141212T-50
	65' x 1/4" x 65' / 1/2" Lineset (Twin-Tube Insulation)	<input type="checkbox"/> MLS141212T-65
Mini-Split Wire	14 Gauge, 4 wire MiniSplit Cable—250 ft. roll	<input type="checkbox"/> SW144-250
	14 Gauge, 4 wire MiniSplit Cable—50 ft. roll	<input type="checkbox"/> SW144-50
	16 Gauge, 4 wire MiniSplit Cable—250 ft. roll	<input type="checkbox"/> SW164-250
	16 Gauge, 4 wire MiniSplit Cable—50 ft. roll	<input type="checkbox"/> SW164-50

OUTDOOR UNIT ACCESSORIES: PUZ-A18NKA7

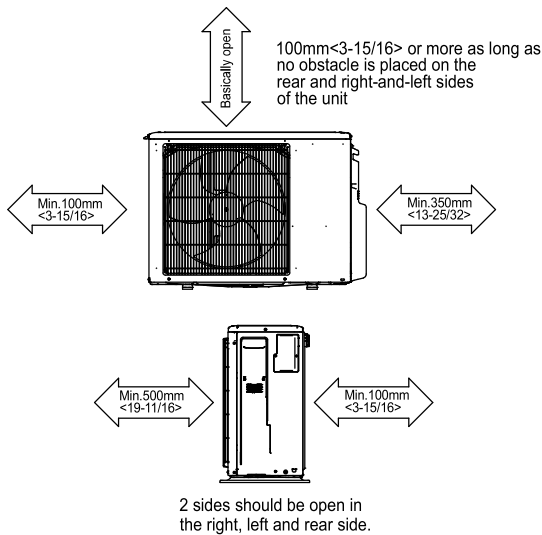
Air Outlet Guide	Air Outlet Guide	<input type="checkbox"/> PAC-SJ07SG-E
Centralized Drain Pan	Centralized Drain Pan	<input type="checkbox"/> PAC-SG63DP-E
	Drain Pan	<input type="checkbox"/> PAC-SG64DP-E
Control/Service Tool	Control/Service Tool	<input type="checkbox"/> PAC-SK52ST
	M- & P-Series Maintenance Tool Cable Set	<input type="checkbox"/> M21EC0397
	USB/UART Conversion Cable (Required for all laptop connection)	<input type="checkbox"/> M21EC1397
Drain Socket	Drain Socket	<input type="checkbox"/> MAC-871DS
Hail Guards	Hail Guard	<input type="checkbox"/> HG-A5
M-NET Converter	M-NET Converter	<input type="checkbox"/> PAC-SJ96MA-E
Mini-Split Wire	14 Gauge, 4 wire MiniSplit Cable—250 ft. roll	<input type="checkbox"/> S144-250
	14 Gauge, 4 wire MiniSplit Cable—50 ft. roll	<input type="checkbox"/> S144-50
	16 Gauge, 4 wire MiniSplit Cable—250 ft. roll	<input type="checkbox"/> S164-250
	16 Gauge, 4 wire MiniSplit Cable—50 ft. roll	<input type="checkbox"/> S164-50
Mounting Pad	Condensing Unit Mounting Pad: 16" x 36" x 3"	<input type="checkbox"/> ULTRILITE1
Stand	18" Single Fan Stand	<input type="checkbox"/> QSMS1801M
	24" Single Fan Stand	<input type="checkbox"/> QSMS2401M
	Condenser Wall Bracket	<input type="checkbox"/> QSWB2000M-1
	Condenser Wall Bracket - Stainless Steel Finish	<input type="checkbox"/> QSWBSS
	Outdoor Unit Stand — 12" High	<input type="checkbox"/> QSMS1201M
Wind Baffle	Front Wind Baffle	<input type="checkbox"/> WB-PA4
	Rear Wind Baffle	<input type="checkbox"/> WB-RE4
	Side Advanced Wind Baffle	<input type="checkbox"/> WB-SD4

OUTDOOR UNIT DIMENSIONS: PUZ-A18NKA7

Unit: mm<in>



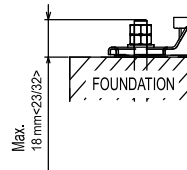
Free space around the outdoor unit (basic example)



FOUNDATION BOLTS

Please secure the unit firmly with 4 foundation (M10<W3/8>) bolts. (Bolts, washers and nut must be purchased locally).

<Foundation bolt height>



PIPING-WIRING DIRECTION

Piping and wiring connection can be made from the rear direction only.