

SECTION 15732 - PACKAGED ROOFTOP AIR-CONDITIONING UNITS

PART 1 - GENERAL

1.1 SECTION REQUIREMENTS

- A. Submittals: Product Data and Shop Drawings.
- B. Comply with ASHRAE 15.
- C. EER: Equal to or greater than prescribed by the energy code adopted by the Authority Having Jurisdiction.
- D. Warranties: Submit a written warranty, signed by the manufacturer, agreeing to the repair or replacement of components that fail within 5 years of Substantial Completion.

PART 2 - PRODUCTS

2.1 PACKAGED UNITS, 5 TO 20 TONS

- A. Factory assembled and tested, consisting of compressors, condensers, evaporator coils, condenser and evaporator fans, refrigeration and temperature controls, filters, and dampers.
 - 1. Refer to Rooftop Heating/Cooling Unit Schedule on drawing M600 for capacities, and manufacturers.
 - 2. Evaporator Fans: Belt or direct driven, forward curved centrifugal.
 - 3. Exhaust/Relief Fans: Direct drive, forward curved centrifugal or propeller.
 - 4. Condenser Fans: Direct drive propeller.
 - 5. Refrigerant Coils: Aluminum fins and copper coil.
 - 6. Compressors: Serviceable hermetic or fully hermetic, with safety controls, hot gas bypass, and timed off controls.
 - 7. Heat Exchangers: Gas fired, with gas controls, electronic ignition, high limit cutout, and forced draft proving switch.
 - 8. Economizer controls (Comparative Enthalpy, 100% capacity).
 - 9. Smoke Detectors: Photoelectric in supply and/or return as called for in schedule on sheet M600.
 - 10. Operating Controls: Two stage heating and two stage cooling on units 7-1/2 tons and over.
 - 11. Roof curb.
 - 12. Control Wiring from T-stat to rooftop unit: Shall be 18ga / 7 conductor, rated for plenum applications.
 - 13. Control Wiring from T-stat to remote sensor: Shall be a separate 18ga / 2 conductor shielded, rated for plenum applications.

PART 3 - EXECUTION

3.1 INSTALLATION

- A. Install units level and plumb and firmly anchored.
- B. Connect gas piping to burner with pipe same size as gas train inlet, and provide union with sufficient clearance for burner removal and service.
- C. Install ducts to termination in roof mounting frames. Terminate ducts through roof structure.
- D. Connect units to wiring systems and to ground.

END OF SECTION 15732

SECTION 15810 - DUCTS AND ACCESSORIES

PART 1 - GENERAL

1.1 SECTION REQUIREMENTS

- A. Submittals: Product Data for fire and smoke dampers.
- B. Comply with NFPA 90A for systems serving spaces more than 25,000 cu. ft. in volume or building Types II, IV, and V construction more than 3 stories in height.
- C. Comply with NFPA 90B for systems serving spaces in 1 or 2 family dwellings or serving spaces less than 25,000 cu. ft..
- D. Comply with NFPA 96, "Ventilation Control and Fire Protection of Commercial Cooking Operations," for kitchen hood ducts.
- E. Comply with UL 181 and UL 181A for ducts and closures.
- F. Testing, Adjusting, and Balancing Agency Qualifications: AABC certified (to be furnished by Tenant).

PART 2 - PRODUCTS

2.1 DUCTS

- A. Spiral Duct: Spiral Lock Seam, without insulation, G90 galvanized finish, ASTM A-653/G94
 - 1. Basis of Design Manufacturers: Lindab SPIROsafe, alternates to the basis of design must be submitted for review.
 - 2. Fittings: Factory produced standing seam construction with internal sealing. Fittings with a major axis of 36" or smaller shall be 20 gauge. Fittings with a major axis of 37"-48" shall be 18 gauge.
- B. Galvanized Steel Sheet: Forming steel, ASTM A 653/653M, G90 coating designation.
- C. Duct Liner: ASTM C 1071, Type II, with an airstream surface coated with a temperature resistant coating. Thickness: 1-1/2 inch. R-value : 8.
 - 1. Adhesive: ASTM C 916, Type I.
 - 2. Mechanical Fasteners: Galvanized steel pin, length as required to penetrate liner plus a 1/8 inch projection maximum into the airstream.
- D. Joint and Seam Tape: Comply with UL 181A.
- E. Joint and Seam Sealant: Comply with UL 181A.
- F. Rectangular Metal Duct Fabrication: Comply with SMACNA's "HVAC Duct Construction Standard" for metal thickness, reinforcing types and intervals, tie rod applications, and joint types and intervals.

2.2 ACCESSORIES

- A. Volume-Control Dampers: Factory fabricated volume control dampers, complete with required hardware and accessories. Single blade and multiple opposed blade, standard leakage rating, and suitable for horizontal or vertical applications.
- B. Fire Dampers: Factory-fabricated fire dampers, complete with required hardware and accessories. UL labeled according to UL 555, "Fire Dampers".
- C. Flexible Connectors: Flame retardant or noncombustible fabrics, coatings, and adhesives complying with UL 181, Class 1.
- D. Flexible Ducts: Factory fabricated, insulated, round duct, with an outer jacket enclosing 2 inch thick, glass fiber insulation, R-value: 6.0, around a continuous inner liner.

PART 3 - EXECUTION

3.1 INSTALLATION

- A. Duct System Pressure Class: Construct and install each duct system with 2 inch positive and negative duct pressure classifications.
- B. Conceal ducts from view in finished and occupied spaces. Except where noted as exposed.
- C. Avoid passing through electrical equipment spaces and enclosures.
- D. Support and connect metal ducts according to SMACNA's "HVAC Duct Construction Standard".
- E. Install duct accessories according to applicable portions of details of construction as shown in SMACNA standards.
- F. Install liner and/or insulation on ductwork per the material schedule on sheet M010.
- G. Install volume control dampers in lined duct with methods to avoid damage to liner and to avoid erosion of duct liner.
- H. Install fire and smoke dampers according to manufacturer's UL approved written instructions.
- I. Install fusible links in fire dampers.
- J. Provide saddle taps at tees for exposed ductwork.

3.2 TESTING, ADJUSTING, AND BALANCING

- A. The Tenant will supply an independent balance agent to to balance and adjust the HVAC installation. The balance agent will be responsible for any pulley or belt changes required.
- B. The GC is to have trained staffed available during the balancing to correct issues noted by the balance agent.
- C. The balance agent is to balance airflow within distribution systems, including submains, branches, and terminals to indicated quantities +/- 10%. The hood exhaust system shall be balanced to a tolerance of -0+10% and the make-up air system to a tolerance of -10+0%.
- D. The balance agent is to supply a copy of the balance report to the Tenant, engineer and general contractor for review.

END OF SECTION 15810

SECTION 15855 - DIFFUSERS, REGISTERS, AND GRILLES

PART 1 - GENERAL

1.1 SECTION REQUIREMENTS

- A. Submittals: None.

PART 2 - PRODUCTS

2.1 OUTLETS AND INLETS

- A. All air terminal devices:
 - 1. Refer to Grills, Registers, and Diffusers Schedule for equipment schedule
 - 2. Manufacturer: As scheduled (NO SUBSTITUTIONS)
 - 3. Material: As scheduled.
 - 4. Finish: As scheduled.
 - 5. Mounting: As scheduled.

PART 3 - EXECUTION

3.1 INSTALLATION

- A. Coordinate location and installation with duct installation and installation of other ceiling and wall mounted items.
- B. Locate ceiling diffusers, registers, and grilles, as indicated on the architectural "reflected ceiling plans." Unless otherwise indicated, locate units in center of acoustical ceiling panels.

END OF SECTION 15855

CALIFORNIA GREEN BUILDING STANDARDS CODE

5.410 BUILDING MAINTENANCE AND OPERATION

5.410.4 TESTING AND ADJUSTING:

Testing and adjusting of systems installed shall be required for buildings less than 10,000 square feet or new systems to serve and addition or iteration subject to Section 303.1.

5.410.4.2 SYSTEMS:

Develop a written plan of procedures for testing and adjusting systems. Systems to be included for testing and adjusting shall include at a minimum, as applicable to the project:

- 1. HVAC systems and controls
- 2. Indoor and outdoor lighting and controls
- 3. Water heating systems
- 4. Renewable energy systems
- 5. Landscape irrigation systems
- 6. Water reuse systems

5.410.4.3 PROCEDURES:

Perform testing and adjusting procedures in accordance with manufacturer's specifications and applicable standards on each system.

5.410.4.3.1 HVAC BALANCING:

In addition to testing and adjusting, before a new space-conditioning system serving a building or space is operated for normal use, the system shall be balanced in accordance with the procedures defined by the Testing Adjusting and Balancing Bureau National Standards; the National Environmental Balancing Bureau Procedural Standards; Associated Air Balance Council National Standards or as approved by the enforcing agency.

5.410.4.4 REPORTING:

After completion of testing, adjusting and balancing, provide a final report of testing signed by the individual responsible for performing these services.

5.410.4.5 OPERATION AND MAINTENANCE MANUAL:

Provide the building owner or representative with detailed operating and maintenance instruction and copies of guarantees/warranties for each system. O&M instruction shall be consistene with OSHA requirements in CFR, Title 8, Section 5142, and other related regulations.

5.410.4.5.1 INSPECTIONS AND REPORTS:

Include a copy of all inspection verifications and reports require by the enforcing agency.

5.504 POLLUTANT CONTROL

5.504.1 TEMPORARY VENTILATION:

The permanent HVAC system shall only be used during construction if necessary to condition the building or areas of addition or alteration within the required temperature range for material and equipment installation. If the HVAC system is used during construction, use return air filters with a Minimum Efficiency Reporting Value (MERV) of 8, based on ASHRAE 52.2-1999, or an average efficiency of 30% based on ASHRAE 52.1-1992. Replace air filters immediately prior to occupancy, or, if the building is occupied alteration, at the conclusion of construction.

5.504.3 COVERING OF DUCT OPENINGS AND MECHANICAL EQUIPMENT DURING CONSTRUCTION:

At the time of rough installation and during storage on the construction site until final startup of the heating, cooling, and ventilating equipment, all duct and other related air distribution component openings shall be covered with tape, plastic, sheet metal, or other methods acceptable to the enforcing agency to reduce the amount of dust, water, and debris which may collect in the system.

5.508 OUTDOOR AIR QUALITY

5.508.1 OZONE DEPLETION AND GREENHOUSE GAS REDUCTIONS:

Installations of HVAC, refrigeration, and fire suppression equipment shall comply with Section 5.508.1.1 and 5.508.1.2.

5.508.1.1 CHLOROFLUOROCARBONS (CFCS):

Install HVAC, refrigeration and fire suppression equipment that do not contain CFCS.

5.508.1.2 HALONS:

Install HVAC, refrigeration and fire suppression equipment that do not contain Halons.

HVAC GENERAL NOTES

- A. GENERAL NOTES APPLY TO HVAC SHEETS.
- B. WORK SHALL COMPLY WITH STATE AND LOCAL CODE REQUIREMENTS AS APPROVED AND AMENDED BY THE AUTHORITY HAVING JURISDICTION, INCLUDING APPLICABLE SECTIONS OF NFPA, THE MECHANICAL CODE, AND ANY INTERIM AMENDMENTS AT THE TIME OF THE PROPOSAL. PURCHASE PERMITS ASSOCIATED WITH THE WORK. OBTAIN INSPECTIONS REQUIRED BY CODE. SEE ARCHITECTURAL SHEETS FOR THE PREVAILING CODES.
- C. CONTRACTOR AND SUBCONTRACTORS SHALL REVIEW A COMPLETE SET OF THE CONSTRUCTION DOCUMENTS.
- D. COORDINATE WORK WITH THE WORK OF OTHER TRADES, EQUIPMENT FURNISHED BY OTHERS, REQUIREMENTS OF THE OWNER, AND OF THE EXISTING CONDITIONS AT THE PROJECT SITE.
- E. DRAWINGS FOR THE MECHANICAL WORK ARE DIAGRAMMATIC, SHOWING THE GENERAL LOCATION, TYPE, LAYOUT, AND EQUIPMENT REQUIRED. THE DRAWING SHALL NOT BE SCALED FOR EXACT MEASUREMENTS, REFER TO ARCHITECTURAL DRAWINGS FOR DIMENSIONS. REFER TO MANUFACTURER'S STANDARD INSTALLATION DRAWINGS FOR EQUIPMENT CONNECTIONS AND INSTALLATION REQUIREMENTS. PROVIDE DUCTWORK, CONNECTIONS, OFFSETS, ACCESSORIES, AND MATERIALS NECESSARY FOR A COMPLETE SYSTEM.
- F. DUCT DIMENSIONS ON PLANS INDICATE DIMENSIONS OF INTERNAL FREE AREA.
- G. PERFORATED CEILING DIFFUSERS SHALL BE 4-WAY UNLESS NOTED OTHERWISE.
- H. COORDINATE ROOF WORK WITH THE OWNER'S CONSTRUCTION MANAGER PRIOR TO CONSTRUCTION.
- I. UNLESS NOTED OTHERWISE RECTANGULAR DUCT ELBOWS GREATER THAN 45° SHALL BE MITERED ELBOWS WITH DOUBLE-THICKNESS TURNING VANES AND RECTANGULAR DUCT ELBOWS 45° OR LESS SHALL BE RADIUSSED ELBOWS WITH AN INSIDE RADIUS OF AT LEAST 1/2 THE WIDTH OF THE DUCT.
- J. REPLACE AIR FILTERS WITH NEW, CLEAN MERV 8 AIR FILTERS AT TURNOVER.
- K. THE TERM "FURNISH" MEANS SUPPLY AND DELIVER TO THE PROJECT SITE, READY FOR UNLOADING, UNPACKING, ASSEMBLY, INSTALLATION, AND SIMILAR OPERATIONS. THE TERM "INSTALL" DESCRIBES THE OPERATIONS AT THE PROJECT SITE INCLUDING THE ACTUAL UNLOADING, UNPACKING, ASSEMBLY, ERECTING, PLACING, ANCHORING, APPLYING, WORKING TO DIMENSION, FINISHING, CURING, PROTECTING, CLEANING, AND SIMILAR OPERATIONS. THE TERM "PROVIDE" MEANS TO FURNISH AND INSTALL, COMPLETE AND READY FOR THE INTENDED USE.
- L. PROVIDE LABELING CALLED FOR IN THE HVAC DRAWINGS USING ENGRAVED PHENOLIC PLATES.
- M. PROVIDE P3000 12 GA. UNISTRUT WITH PG FINISH FOR DUCT SUPPORTS AND OTHER UNISTRUT IN AREAS EXPOSED TO VIEW. SLOTTED UNISTRUT AND OTHER UNISTRUT WITH HOLES IS NOT ACCEPTABLE.

HVAC MATERIAL SCHEDULE

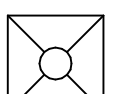
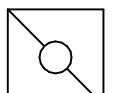
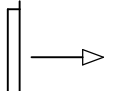
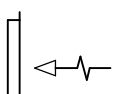

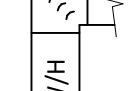
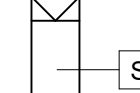
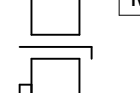
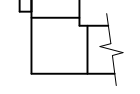

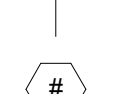
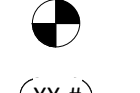
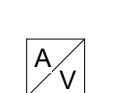
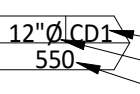

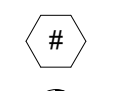
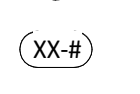

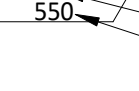

	APPLICATION	ALLOWABLE MATERIAL
DUCT		
	CONCEALED, GENERAL EXHAUST	RECT. OR ROUND AS SHOWN
	CONCEALED, RETURN	RECT. OR ROUND AS SHOWN, LINED OR INSULATED
	CONCEALED, SUPPLY	RECT. OR ROUND AS SHOWN, LINED OR INSULATED
	CONCEALED, TYPE I HOOD EXHAUST	RECTANGULAR 16 GA. BLACK IRON W/ WRAP OR UL 1978 FACTORY-MANUFACTURED DUCT W/ WRAP (SUBMIT SHOP DRAWINGS FOR FACTORY-MANUFACTURED DUCT PRIOR TO ORDERING FOR APPROVAL)
	EXPOSED GENERAL EXHAUST	RECTANGULAR, NO EXPOSED DUCT-SEALING MASTIC
	EXPOSED RETURN	RECTANGULAR, NO EXPOSED DUCT-SEALING MASTIC
	EXPOSED SUPPLY	RECT. LINED OR ROUND AS SHOWN, NO EXPOSED DUCT-SEALING MASTIC

HVAC ABBREVIATIONS

- (E) EXISTING
- ABV ABOVE
- ADA AMERICANS WITH DISABILITIES ACT
- AFF ABOVE FINISHED FLOOR
- AFG ABOVE FINISHED GRADE
- AHJ AUTHORITY HAVING JURISDICTION
- BFF BELOW FINISHED FLOOR
- BFG BELOW FINISHED GRADE
- BOH BACK OF HOUSE
- CLG CEILING
- CTE CONNECT TO EXISTING
- DN DOWN
- EXG EXISTING
- FLR FLOOR
- FOH FRONT OF HOUSE
- GYP GYPSUM BOARD
- NTS NOT TO SCALE
- O/H OVERHEAD
- OBD OPPOSED BLADE DAMPER
- TYP TYPICAL
- U/G UNDERGROUND
- UNO UNLESS NOTED OTHERWISE
- VFD VARIABLE FREQUENCY DRIVE
- VSC VARIABLE SPEED CONTROLLER
- W/ WITH
- WIC WALK-IN COOLER

- C02AS TENANT'S CO2 ALARM SUPPLIER
- GC GENERAL CONTRACTOR
- HES TENANT'S HVAC EQUIPMENT SUPPLIER
- HS TENANT'S HOOD SUPPLIER
- KES TENANT'S KITCHEN EQUIPMENT SUPPLIER
- LL LANDLORD
- SPS TENANT'S SODA POP SUPPLIER
- TAB TENANT'S TEST AND BALANCE VENDOR
- TCC TENANT'S CABLING CONTRACTOR
- TDC TENANT'S DUCT CLEANER
- TEMS TENANT'S ENERGY MANAGEMENT SYSTEM SUPPLIER
- TLS TENANT'S LIGHT/LAMP SUPPLIER
- TMB TENANT'S MENU BOARD SUPPLIER
- TMS TENANT'S MILLWORK SUPPLIER
- TP TENANT'S PHONE SUPPLIER
- TRS TENANT'S RAILING SUPPLIER
- TSV TENANT'S SIGN VENDOR
- TUV TENANT'S UV SNAITZER SUPPLIER
- WCS TENANT'S WALK-IN COOLER SUPPLIER
- WHS TENANT'S WATER HEATER SUPPLIER

HVAC SYMBOLS

-  CEILING DIFFUSER
-  CEILING-MOUNTED RETURN OR EXHAUST REGISTER
-  SUPPLY REGISTER
-  RETURN GRILLE
-  FLEXIBLE DUCT
-  MITERED CORNER WITH TURNING VANES
-  DUCTWORK INTERNAL FREE DIMENSIONS (WIDTH/HEIGHT) RECTANGULAR TO ROUND DUCT TRANSITION
-  DUCT-MOUNTED SMOKE DETECTOR
-  MOTOR-OPERATED DAMPER
-  MANUAL VOLUME DAMPER
-  GREASE DUCT CLEANOUT
-  MITERED CORNER WITHOUT TURNING VANES
-  GRIDPOINT THERMOSTAT
-  GRIDPOINT ZONE SENSOR MODULE
-  GRIDPOINT SUPPLY PROBE
-  PLAN NOTE: SEE PLAN NOTES LISTED ON THE SAME SHEET FOR NOTE MEANING
-  CONNECT TO EXISTING
-  EQUIPMENT TAG: SEE EQUIPMENT SCHEDULE ON SHEET M600 FOR EQUIPMENT INFORMATION
-  AUDIO/VISUAL REMOTE SMOKE DETECTOR ANNUNCIATOR WITH REMOTE KEY OPERATED RESET
-  GRILLE, REGISTER, OR DIFFUSER TAG: TAG NECK SIZE AIRFLOW [CFM]

Consultant:



Blanchard AE Group

1425 WAKARUSA DR. STE B
LAWRENCE, KS 66049
PH: 785.993.0300
AEGROUP@BAE.GROUP



COPYRIGHT 2023
THIS DRAWING IS AN INSTRUMENT OF SERVICE AND AS SUCH REMAINS THE PROPERTY OF CHIPOTLE MEXICAN GRILL, INC. PERMISSION FOR USE OF THIS DOCUMENT IS LIMITED AND CAN BE EXTENDED ONLY BY WRITTEN AGREEMENT WITH CHIPOTLE MEXICAN GRILL, INC.



CHIPOTLE MEXICAN GRILL, INC.
PO BOX 182566
COLUMBUS, OH 43218-2566
TELEPHONE: (614) 218-2400
INTERNET: WWW.CHIPOTLE.COM

STORE NO.: 4903

NAVAJO RD & LAKE MURRAY
8856 Navajo Rd.
San Diego, CA 92119

Issue Record:
04/17/2023 PERMIT ISSUE

Revisions:

Drawn: JJD Checked: AJD

Project No.: 231010

Contents:

HVAC SPECIFICATIONS

M010

Mechanical Systems CERTIFICATE OF COMPLIANCE LMCC-MCH-01-E
Project Name: Chipotle - Navajo Rd & Lake Murray Report Page: (Page 1 of 8)
Date Prepared:

Table A: GENERAL INFORMATION. Columns: 01 Project Location (city), 02 Climate Zone, 03 Occupancy Types Within Project, 04 Total Conditioned Floor Area, 05 Total Unconditioned Floor Area, 06 # of Stories (Habitable Above Grade).

B. PROJECT SCOPE

This table includes mechanical systems or components that are within the scope of the permit application and are demonstrating compliance using the prescriptive path outlined in 140.4, 170.2(b) or 141.0(b)(2) and 180.2(b)(2) for alterations.

Table B: Project Scope. Columns: 01 Air System(s), 02 Wet System Components, 03 Dry System Components. Includes checkboxes for Heating Air System, Cooling Air System, Mechanical Controls, etc.

Registration Number: CA Building Energy Efficiency Standards - 2022 Low-rise Multifamily Compliance
Generated Date/Time: Report Version: 2022.0.000 Schema Version: rev 20220101
Documentation Software: Energy Code Ace Compliance ID: 101099-0423-0004 Report Generated: 2023-04-13 13:45:57

Mechanical Systems CERTIFICATE OF COMPLIANCE LMCC-MCH-01-E
Project Name: Chipotle - Navajo Rd & Lake Murray Report Page: (Page 4 of 8)
Date Prepared:

H. FAN SYSTEMS & AIR ECONOMIZERS

This table is used to demonstrate compliance with prescriptive requirements found in 140.4(c), 140.4(e), 140.4(m), 170.2(c)(3), and 170.2(c)(4A) for fan systems. Fan systems serving only process loads are exempt from these requirements and do not need to be included in Table H.

Table H: Fan Systems & Air Economizers. Columns: System Name, RTU's, Quantity, Fan System Status, New, System Zoning, Multi-zone VAV systems, Serving Dwelling Units, Not Serving Dwelling Units, Fan System Airflow (cfm), 3,400, Site Elevation, 530, Economizer, Differential Enthalpy. Includes rows for RTU-1 and RTU-2 with various components like Gas heat, Economizer Return Damper, etc.

1 FOOTNOTES: Fans serving spaces with design background noise goals below NC35
2 Low-turndown single-zone VAV fan system must be capable of and configured to reduce airflow to 50 percent of design airflow and use no more than 30 percent of the design wattage at that airflow. No more than 10 percent of the design load served by the equipment shall have fixed loads.
3 Fan system allowance includes fan system base allowance.
4 Filter pressure loss can only be counted once per fan system.
5 Complex Fan System means a fan system that combines a single cabinet fan system with other supply fans, exhaust fans, or both.
6 Computer room economizers must meet requirements of 140.9(a) and will be documented on the NRCC-PRC-E document..

Registration Number: CA Building Energy Efficiency Standards - 2022 Low-rise Multifamily Compliance
Generated Date/Time: Report Version: 2022.0.000 Schema Version: rev 20220101
Documentation Software: Energy Code Ace Compliance ID: 101099-0423-0004 Report Generated: 2023-04-13 13:45:57

Mechanical Systems CERTIFICATE OF COMPLIANCE LMCC-MCH-01-E
Project Name: Chipotle - Navajo Rd & Lake Murray Report Page: (Page 2 of 8)
Date Prepared:

C. COMPLIANCE RESULTS

Table C will indicate if the project data input into the compliance document is compliant with mechanical requirements. This table is not editable by the user. If this table says "DOES NOT COMPLY" or "COMPLIES with Exceptional Conditions" refer to Table D, or the table indicated as not compliant for guidance.

Table C: Compliance Results. Grid with columns 01-09 and rows for System Summary, Pumps, Fans/Economizers, System Controls, Ventilation, Terminal Box Controls, Distribution, Cooling Towers, and Compliance Results. Includes a summary row: Mandatory Measures Compliance (See Table Q for Details) COMPLIES

D. EXCEPTIONAL CONDITIONS

This table is auto-filled with uneditable comments because of selections made or data entered in tables throughout the form. The permit applicant has indicated on Table J that ventilation calculations have been attached or included elsewhere on the plans.

E. ADDITIONAL REMARKS

This table includes remarks made by the permit applicant to the Authority Having Jurisdiction.

F. HVAC SYSTEM SUMMARY (DRY & WET SYSTEMS)

Table F: HVAC System Summary. Columns: 01 System Name, 02 Quantity, 03 System Serving, 04 System Status, 05 Space Type, 06 Utilizing Recovered Heat.

Registration Number: CA Building Energy Efficiency Standards - 2022 Low-rise Multifamily Compliance
Generated Date/Time: Report Version: 2022.0.000 Schema Version: rev 20220101
Documentation Software: Energy Code Ace Compliance ID: 101099-0423-0004 Report Generated: 2023-04-13 13:45:57

Mechanical Systems CERTIFICATE OF COMPLIANCE LMCC-MCH-01-E
Project Name: Chipotle - Navajo Rd & Lake Murray Report Page: (Page 5 of 8)
Date Prepared:

Fan Energy Index (FEI)

Table G: Fan Energy Index (FEI). Columns: 01 Name or Item Tag, 02 FEI Exception, 03 FEI. Row for RTU's: None Applies, 0.8

I. SYSTEM CONTROLS

This table is used to demonstrate compliance with mandatory controls in 110.2 and 120.2 and prescriptive controls in 140.4(f) and (n), 170.2(c)(4D) 170.2(c)(4L) or requirements in 141.0(b)(2) 180.2(b)(2) for altered space conditioning systems.

Table I: System Controls. Columns: 01 System Name, 02 System Zoning, 03 Conditioned Floor Area Being Served (ft²), 04 Thermostats, 05 Shut-Off Controls, 06 Isolation Zone Controls, 07 Demand Response, 08 Supply Air Temp. Reset, 09 Window Interlocks per Title 20. Row for RTU-1: Single zone, <= 25,000 ft², Setback, Auto Timer Switch, NA: Single Zone, DR Tstat per 110.12, NA: Single Zone, NA: No operable windows

1 FOOTNOTES: Gravity gas wall heaters, gravity floor heaters, gravity room heaters, non-central electric heaters, fireplaces or decorative gas appliances, wood stoves are not required to have setback thermostats.

J. VENTILATION AND INDOOR AIR QUALITY

This table is used to demonstrate compliance with mandatory ventilation requirements in 120.1 120.2(e)(3) 140.4(p) and 140.4(q) for all nonresidential and 160.2, 160.3(a)(3), 170.2(a)(4), 170.2(a)(4) for residential occupancies. For alterations, only ventilation systems being altered within the scope of the permit application need to be documented in this table. In lieu of this table, the required outdoor ventilation rates and airflow may be shown on the plans or the calculations can be presented in a spreadsheet.

Table J: Ventilation and Indoor Air Quality. Columns: 01, 02, 03, 04, 05, 06, 07, 08, 09. Includes checkboxes for ventilation calculations and nonresidential/hotel/motel spaces.

K. TERMINAL BOX CONTROLS

This section does not apply to this project.

Registration Number: CA Building Energy Efficiency Standards - 2022 Low-rise Multifamily Compliance
Generated Date/Time: Report Version: 2022.0.000 Schema Version: rev 20220101
Documentation Software: Energy Code Ace Compliance ID: 101099-0423-0004 Report Generated: 2023-04-13 13:45:57

Mechanical Systems CERTIFICATE OF COMPLIANCE LMCC-MCH-01-E
Project Name: Chipotle - Navajo Rd & Lake Murray Report Page: (Page 3 of 8)
Date Prepared:

F. HVAC SYSTEM SUMMARY (DRY & WET SYSTEMS)

Dry System Equipment Sizing (includes air conditioners, condensers, heat pumps, VRF, furnaces and unit heaters and DOAS systems)

Table F: HVAC System Summary. Grid with columns 01-11 and rows for Name or Item Tag, Equipment Category, Equipment Type, Smallest Size Available, Heating Output, Cooling Output, and Load Calculations. Row for RTU: Furnace + AC, AC, air cooled, single pkg + warm-air central furnace, gas-fired, Yes, 181, 224, 0, 75.9, 93, 82.6, 59.8

1 FOOTNOTES: Equipment shall be the smallest size, within the available options of the desired equipment line, necessary to meet the design heating and cooling loads of the building per 140.4(e) and 170.2(c)(1). Healthcare facilities are exempted.
2 It is common practice to show rated output capacity on the equipment schedule. Sensible cooling output comes from specification sheet tables.
3 If equipment is heating only, leave cooling output and load blank. If equipment is cooling only, leave heating output and load blank.
4 Authority Having Jurisdiction may ask for load calculations used for compliance per 140.4(b) and 170.2(c).

Dry System Equipment Efficiency (other than Package Terminal Air Conditioners (PTAC) and Package Terminal Heat Pumps (PTHP), DX-DOAS and Dual Fuel Heat Pumps)

Table G: Dry System Equipment Efficiency. Columns: 01 Name or Item Tag, 02 Size Category, 03 Rating Condition, 04 Efficiency Unit, 05 Minimum Efficiency, 06 Design Efficiency, 07 Efficiency Unit, 08 Minimum Efficiency, 09 Design Efficiency. Row for RTU: >=65kBtu/h cooling/<225kBtu/h heating, AFUE, 0.8, 0.81, EER, IEEER, 11, 12.7, 15

G. PUMPS

This section does not apply to this project.

Registration Number: CA Building Energy Efficiency Standards - 2022 Low-rise Multifamily Compliance
Generated Date/Time: Report Version: 2022.0.000 Schema Version: rev 20220101
Documentation Software: Energy Code Ace Compliance ID: 101099-0423-0004 Report Generated: 2023-04-13 13:45:57

Mechanical Systems CERTIFICATE OF COMPLIANCE LMCC-MCH-01-E
Project Name: Chipotle - Navajo Rd & Lake Murray Report Page: (Page 6 of 8)
Date Prepared:

L. DISTRIBUTION (DUCTWORK AND PIPING)

This table is used to show compliance with mandatory pipe insulation requirements found in 120.3 and mandatory requirements found in 120.4(g) for duct sealing.

Table L: Distribution (Ductwork and Piping). Columns: 01, 02, 03, 04, 05, 06, 07, 08, 09. Row for RTU: Insulation shall be protected from damage, including that due to sunlight, moisture, equipment maintenance, and wind. Insulation exposed to weather shall be installed with a cover suitable for outdoor service.

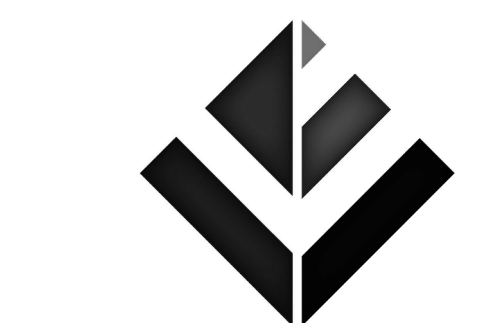
Duct Leakage Testing

Table M: Duct Leakage Testing. Columns: 01, 02, 03, 04, 05, 06, 07, 08, 09. Includes rows for NR/Common Use, Dwelling Units, and Duct leakage testing per CMCC Section 603.10.1. Row for M100: The answers to the questions below apply to the following duct systems: M100, NR/Common Use: Duct leakage testing shall not exceed 6% per NA7.5.3 required for these systems? No

M. COOLING TOWERS

This section does not apply to this project.

Registration Number: CA Building Energy Efficiency Standards - 2022 Low-rise Multifamily Compliance
Generated Date/Time: Report Version: 2022.0.000 Schema Version: rev 20220101
Documentation Software: Energy Code Ace Compliance ID: 101099-0423-0004 Report Generated: 2023-04-13 13:45:57



1425 WAKARUSA DR. STE B LAWRENCE, KS 66049 PH: 785.993.0300 AEGROUP@BAE.GROUP



COPYRIGHT 2023 THIS DRAWING IS AN INSTRUMENT OF SERVICE AND AS SUCH REMAINS THE PROPERTY OF CHIPOTLE MEXICAN GRILL, INC. PERMISSION FOR USE OF THIS DOCUMENT IS LIMITED AND CAN BE EXTENDED ONLY BY WRITTEN AGREEMENT WITH CHIPOTLE MEXICAN GRILL, INC..



CHIPOTLE MEXICAN GRILL, INC. PO BOX 182566 COLUMBUS, OH 43218-2566 TELEPHONE: (614) 318-2400 INTERNET: WWW.CHIPOTLE.COM

STORE NO.: 4903
NAVAJO RD & LAKE MURRAY
8856 Navajo Rd.
San Diego, CA 92119

Table N: Issue Record. Columns: Issue Record, 04/17/2023, PERMIT ISSUE

Drawn: JUD Checked: JUD

Project No: 231010

Contents:

MECHANICAL TITLE 24 COMPLIANCE

M020

STATE OF CALIFORNIA
Mechanical Systems CALIFORNIA ENERGY COMMISSION

CERTIFICATE OF COMPLIANCE LMCC-MCH-01-E	
Project Name: Chipotle - Navajo Rd & Lake Murray	Report Page: (Page 7 of 8)
Date Prepared:	

N. DECLARATION OF REQUIRED CERTIFICATES OF INSTALLATION

Selections have been made based on information provided in previous tables of this document. If any selection needs to be changed, please explain why in Table E Additional Remarks. These documents must be provided to the building inspector during construction and can be found online at https://www.energy.ca.gov/title24/2019standards/2019_compliance_documents/Nonresidential_Documents/NRC/

Form/Title
LMCI-MCH-01-E - Must be submitted for all buildings
LMCI-MCH-21-H Duct Location Verification
LMCI-MCH-24-H - Building Envelope Air Leakage Worksheet

P. DECLARATION OF REQUIRED CERTIFICATES OF VERIFICATION

There are no LMCV forms required for this project.

Q. MANDATORY MEASURES DOCUMENTATION LOCATION

This table is used to indicate where mandatory measures are documented in the plan set or construction documentation.

01	02
Compliance with Mandatory Measures documented through MCH	Plan sheet or construction document location
Mandatory Measures Note Block	M010

Registration Number: CA Building Energy Efficiency Standards - 2022 Low-rise Multifamily Compliance
 Generated Date/Time: Report Version: 2022.0.000 Schema Version: rev 20220101
 Documentation Software: Energy Code Ace
 Compliance ID: 101099-0423-0004
 Report Generated: 2023-04-13 13:45:57

STATE OF CALIFORNIA
Mechanical Systems CALIFORNIA ENERGY COMMISSION

CERTIFICATE OF COMPLIANCE LMCC-MCH-01-E	
Project Name: Chipotle - Navajo Rd & Lake Murray	Report Page: (Page 8 of 8)
Date Prepared:	

DOCUMENTATION AUTHOR'S DECLARATION STATEMENT

I certify that this Certificate of Compliance documentation is accurate and complete.

Documentation Author Name: Isaac Dunn	Documentation Author Signature: Isaac Dunn
Company: BAE Group	Signature Date: 13APR23
Address: 1425 Wakarusa Dr.	CEA/HERS Certification Identification (if applicable):
City/State/Zip: Lawrence/KS/66049	Phone: 785-993-0300

RESPONSIBLE PERSON'S DECLARATION STATEMENT

I certify the following under penalty of perjury, under the laws of the State of California:

- The information provided on this Certificate of Compliance is true and correct.
- I am eligible under Division 3 of the Business and Professions Code to accept responsibility for the building design or system design identified on this Certificate of Compliance (responsible designer).
- The energy features and performance specifications, materials, components, and manufactured devices for the building design or system design identified on this Certificate of Compliance conform to the requirements of Title 24, Part 1, and Part 6 of the California Code of Regulations.
- The building design features or system design features identified on this Certificate of Compliance are consistent with the information provided on other applicable compliance documents, worksheets, calculations, plans and specifications submitted to the enforcement agency for approval with this building permit application.
- I will ensure that a completed signed copy of this Certificate of Compliance shall be made available with the building permit(s) issued for the building, and made available to the enforcement agency for all applicable inspections. I understand that a completed signed copy of this Certificate of Compliance is required to be included with the documentation the builder provides to the building owner at occupancy.

Responsible Designer Name: Laura Blanchard, PE	Responsible Designer Signature: Laura Blanchard
Company: BAE Group	Date Signed: 13APR23
Address: 1425 Wakarusa Dr.	License: M34017
City/State/Zip: Lawrence/KS/66049	Phone: 785-993-0300

Registration Number: CA Building Energy Efficiency Standards - 2022 Low-rise Multifamily Compliance
 Generated Date/Time: Report Version: 2022.0.000 Schema Version: rev 20220101
 Documentation Software: Energy Code Ace
 Compliance ID: 101099-0423-0004
 Report Generated: 2023-04-13 13:45:57

Consultant:



Blanchard AE Group

1425 WAKARUSA DR, STE B
 LAWRENCE, KS 66049
 PH: 785.993.0300
 AEGROUP@BAE.GROUP



COPYRIGHT 2023
 THIS DRAWING IS AN INSTRUMENT OF SERVICE AND AS SUCH REMAINS THE PROPERTY OF CHIPOTLE MEXICAN GRILL, INC. PERMISSION FOR USE OF THIS DOCUMENT IS LIMITED AND CAN BE EXTENDED ONLY BY WRITTEN AGREEMENT WITH CHIPOTLE MEXICAN GRILL, INC.



CHIPOTLE MEXICAN GRILL, INC.
 PO BOX 182566
 COLUMBUS, OH 43218-2566
 TELEPHONE: (614) 318-2400
 INTERNET: WWW.CHIPOTLE.COM

STORE NO.: 4903
 NAVAJO RD & LAKE MURRAY
 8856 Navajo Rd.
 San Diego, CA 92119

Issue Record:
 04/17/2023 PERMIT ISSUE

Revisions:

Drawn: JJD
 Checked: AJD

Project No:
 231010

Contents:

MECHANICAL TITLE
 24 COMPLIANCE

M021

CERTIFICATE OF COMPLIANCE LMCC-PLB-01-E
 This document is used to demonstrate compliance with requirements in 110.1, 110.3, 120.3, and 140.5, and with requirements in 141.0 for additions and alterations, for domestic water heating systems serving nonresidential occupancies within low-rise mixed use buildings using the prescriptive path. For low-rise residential and hotel/motel occupancies compliance is demonstrated with requirements in 110.1, 110.3, 160.4 and 170.2(d), and with requirements 180.1 for additions and 180.2 for alterations.
 Project Name: Chipotle - Navajo Rd & Lake Murray Report Page: (Page 1 of 8)
 Project Address: Date Prepared:

A. GENERAL INFORMATION

01	Project Location (city)	San Diego	02	Climate Zone	7
03 Occupancy Types Within Project (select all that apply):					
• Restaurant					

B. PROJECT SCOPE
 This table includes domestic water heating systems that are within the scope of the permit application and are demonstrating compliance using the prescriptive paths outlined in 140.1/170.2(d) and 141.0(a)/180.1, or 141.0(b)2N / 180.2 for additions or alterations. Solar water heating systems are documented on the LMCC-SAB compliance document. Combined hydronic water heating systems are documented on the LMCC-MCH compliance document.

01	02	03
My project consists of (check all that apply):	System Type ^{1,2}	System Components
<input checked="" type="checkbox"/> New system (DHW system being installed for the first time)	Central System (serving nonresidential spaces)	<input checked="" type="checkbox"/> Equipment <input checked="" type="checkbox"/> Distribution <input checked="" type="checkbox"/> Controls
<input type="checkbox"/> System Alteration (equipment, distribution or controls)		<input type="checkbox"/> Equipment <input type="checkbox"/> Distribution <input type="checkbox"/> Controls

¹FOOTNOTES: Point of use water heaters, or other non-central systems used to serve nonresidential spaces, are considered individual systems.
² Dwelling units refers to hotel/motel guest rooms and units in a multifamily residential occupancy.
³ DHW systems serving 2 or more dwelling units are considered "Central Systems" for multifamily occupancies

Registration Number: CA Building Energy Efficiency Standards - 2022 Low-rise Multifamily Compliance
 Generated Date/Time: Report Version: 2022.0.000 Schema Version: rev 20220101
 Documentation Software: Energy Code Ace
 Compliance ID: 101099-0423-0003 Report Generated: 2023-04-13 08:20:19

CERTIFICATE OF COMPLIANCE LMCC-PLB-01-E
 Project Name: Chipotle - Navajo Rd & Lake Murray Report Page: (Page 4 of 8)
 Date Prepared:

G. DOMESTIC HOT WATER DISTRIBUTION SYSTEM
 This table is used to demonstrate compliance for nonresidential occupancies with distribution requirements in 120.3 and 140.5. For multifamily and hotel/motel occupancies, compliance is demonstrated with requirements 110.3(c), 160.4, 170.2(d).

Recirculation Loops in Central Systems Serving Dwelling Units or Nonresidential Spaces

	Yes	No	Not Applicable	Requirement
01	●	○	○	Air release valve or vertical pump installation per 110.3(c)4A
02	●	○	○	Check valve or similar located between recirculation pump and water heating equipment to prevent backflow per 110.3(c)4B
03	○	○	●	Hose bibb installed between pump and equipment and isolation valve between hose bibb and equipment per 110.3(c)4C
04	●	○	○	Isolation valves on both sides of the pump per 110.3(c)4D
05	○	○	●	Cold water and recirculation loop piping shall not be connected to the hot water storage tank drain port per 110.3(c)4E
06	●	○	○	Check valve installed on cold water supply between hot water system and next closest tee on cold water supply per 110.3(c)4F
07	○	○	●	DWELLING UNITS ONLY: For central systems serving multiple dwelling units, design includes a recirculation system serving separate dwelling units per 170.2(d) unless building has <=8 dwelling units.
08	○	○	●	DWELLING UNITS ONLY: For heat pump water heating systems, the hot water return from the recirculation loop shall connect to a recirculation loop tank and shall not directly connect to the primary heat pump water heater inlet or the primary thermal storage tanks per 170.2(d)2A.
09	○	○	●	DWELLING UNITS ONLY: For heat pump water heating systems, the fuel source for the recirculation loop tank shall be electricity if auxiliary heating is needed. The recirculation loop heater shall be capable of multi-pass water heating operation per 170.2(d)2B.

Registration Number: CA Building Energy Efficiency Standards - 2022 Low-rise Multifamily Compliance
 Generated Date/Time: Report Version: 2022.0.000 Schema Version: rev 20220101
 Documentation Software: Energy Code Ace
 Compliance ID: 101099-0423-0003 Report Generated: 2023-04-13 08:20:19

CERTIFICATE OF COMPLIANCE LMCC-PLB-01-E
 Project Name: Chipotle - Navajo Rd & Lake Murray Report Page: (Page 2 of 8)
 Date Prepared:

C. COMPLIANCE RESULTS
 Table C will indicate if the project data input into the compliance document is compliant with water heating requirements. If this table says "DOES NOT COMPLY" or "COMPLIES with Exceptional Conditions" refer to Table D, or the table indicated as not compliant for guidance.

01	02	03	04
Domestic Hot Water Equipment	Distribution Systems	Controls	COMPLIES
Table F	Table G	Table H	
Yes	Yes	Yes	

D. EXCEPTIONAL CONDITIONS
 This table is auto-filled with uneditable comments because of selections made or data entered in tables throughout the form.

E. ADDITIONAL REMARKS
 This table includes remarks made by the permit applicant to the Authority Having Jurisdiction.

Registration Number: CA Building Energy Efficiency Standards - 2022 Low-rise Multifamily Compliance
 Generated Date/Time: Report Version: 2022.0.000 Schema Version: rev 20220101
 Documentation Software: Energy Code Ace
 Compliance ID: 101099-0423-0003 Report Generated: 2023-04-13 08:20:19

CERTIFICATE OF COMPLIANCE LMCC-PLB-01-E
 Project Name: Chipotle - Navajo Rd & Lake Murray Report Page: (Page 5 of 8)
 Date Prepared:

G. DOMESTIC HOT WATER DISTRIBUTION SYSTEM
Mandatory Pipe Insulation All Occupancies

13	<input type="checkbox"/>	For systems serving dwelling units, pipe insulation must meet the minimum insulation requirements in Table 160.4-A (see below) except: • Piping that penetrates framing members shall not be required to have pipe insulation for the distance of the framing penetration. Piping that penetrates metal framing shall use grommets, plugs, wrapping or other insulating material to assure that no contact is made with the metal framing. Insulation shall abut securely against all framing members • Piping installed in interior or exterior walls shall not be required to have pipe insulation if all of the requirements are met for compliance with Quality Insulation Installation (QII) as specified in the Reference Residential Appendix RA3.5. • Piping surrounded with a minimum of 1 inch of wall insulation, 2 inches of crawspace insulation, or 4 inches of attic insulation, shall not be required to have pipe insulation.
14	<input type="checkbox"/>	For systems serving nonresidential spaces, pipe insulation for the following applications is specified to comply with Table 120.3-A (see below) per 120.3: • Recirculating system piping, including supply and return piping of the water heater • The first 8 ft of hot and cold outlet piping, including between storage tank and heat trap, for a nonrecirculating storage system • Pipes that are externally heated
15	<input checked="" type="checkbox"/>	Insulation shall be protected from damage, including that due to sunlight, moisture, equipment maintenance, and wind. Insulation exposed to weather shall be installed with a cover suitable for outdoor service per 120.3(b) / 160.4(f). Pipe insulation buried below grade must be installed in a water proof and non-crushable casing or sleeve.

TABLE 120.3-A / 160.4-A PIPE INSULATION THICKNESS

Fluid Temperature Range (°F)	Conductivity Range (Btu-in per hour per ft² per °F)	Insulation Mean Rating Temp (°F)	Nominal Pipe Diameter (in)		
			< 1	1 to < 1.5	1.5 to < 4
105-140	0.22 - 0.28	100	1.0 in or R-7.7	1.5 in or R-12.5	1.5 in or R-11

Registration Number: CA Building Energy Efficiency Standards - 2022 Low-rise Multifamily Compliance
 Generated Date/Time: Report Version: 2022.0.000 Schema Version: rev 20220101
 Documentation Software: Energy Code Ace
 Compliance ID: 101099-0423-0003 Report Generated: 2023-04-13 08:20:19

CERTIFICATE OF COMPLIANCE LMCC-PLB-01-E
 Project Name: Chipotle - Navajo Rd & Lake Murray Report Page: (Page 3 of 8)
 Date Prepared:

F. DOMESTIC HOT WATER EQUIPMENT
 This table is used to demonstrate compliance with mandatory equipment requirements in 110.1 and 110.3. Compliance with prescriptive requirements in 140.5(c) / 170.2(d) must also be demonstrated and with 141.0 / 180.1 / 180.2 for addition and alteration scopes.

Equipment Schedule: Water Heating Efficiency and Standby Loss

System Name	03	04	05	06					
Domestic Water Heater	Exception to 140.5(c)/170.2(d)3	Exceptions Do Not Apply	<input type="checkbox"/>	Gas Service Water Heating System >= 1MMBtu/h Capacity-weighted Average Efficiency %					
07	08	09	10	11	12	13	14	15	
Name or Item Tag	Equipment Type	Volume (gal)	Rated Input Capacity (Btu/h)	Max GPM/ First Hour Rating (FHR)	Rated Efficiency	Minimum Efficiency Required	Efficiency Unit	Designed Standby Loss	Maximum Standby Loss
DWH-1	Commercial Electric Storage Water Heater	119	0					0	0.53

¹FOOTNOTE: In systems >= 1MMBtu/h with multiple units, gas water heaters with input capacity > 100,000 Btu/h may meet 90% Et requirements via an input capacity-weighted average.

Water Heating Equipment All Occupancies

	Yes	No	Not Applicable	Requirement
18	<input type="checkbox"/>	<input type="checkbox"/>	<input checked="" type="checkbox"/>	Unfired storage tank insulation shall have Internal + External >=R-16 OR External >=R-3.5. Label required per 110.3(c)3
19	<input type="checkbox"/>	<input type="checkbox"/>	<input checked="" type="checkbox"/>	New state buildings 60% of energy for service water heating from site solar energy or recovered energy per 110.3(c)5
20	<input type="checkbox"/>	<input type="checkbox"/>	<input checked="" type="checkbox"/>	Isolation valves for instantaneous water heater with input rating >6.8 kBtu/h or 2 kW has been specified per 110.3(c)6
21	<input type="checkbox"/>	<input type="checkbox"/>	<input checked="" type="checkbox"/>	School buildings < 25,000 ft² and < 4 stories must install a heat pump water heating system per 140.5(a)1. Water heating systems serving an individual bathroom space may be an instantaneous electric water heater.

Registration Number: CA Building Energy Efficiency Standards - 2022 Low-rise Multifamily Compliance
 Generated Date/Time: Report Version: 2022.0.000 Schema Version: rev 20220101
 Documentation Software: Energy Code Ace
 Compliance ID: 101099-0423-0003 Report Generated: 2023-04-13 08:20:19

CERTIFICATE OF COMPLIANCE LMCC-PLB-01-E
 Project Name: Chipotle - Navajo Rd & Lake Murray Report Page: (Page 6 of 8)
 Date Prepared:

H. DOMESTIC HOT WATER CONTROLS
 This table is used to demonstrate compliance with control requirements in 110.3 for all occupancies. For multifamily residential and hotel/motel occupancies, compliance is also demonstrated with requirements in 160.4(e) / 170.2(d).

	Yes	No	Not Applicable	Requirement
01	<input checked="" type="checkbox"/>	<input type="checkbox"/>	<input type="checkbox"/>	Construction documents require manufacturer certification that service water-heating systems are equipped with automatic temperature controls capable of adjusting temperature settings per 110.3(a).
02	<input type="checkbox"/>	<input type="checkbox"/>	<input checked="" type="checkbox"/>	Systems with capacity > 167,000 BTUH equipped with outlet temperature controls per 110.3(c)1 unless covered by California Plumbing Code 613.0.
03	<input checked="" type="checkbox"/>	<input type="checkbox"/>	<input type="checkbox"/>	Controls for circulating pumps or electrical heat trace systems are capable of automatically turning off the system per §110.3(c)2, unless systems serves healthcare facility.
04	<input type="checkbox"/>	<input type="checkbox"/>	<input checked="" type="checkbox"/>	For recirculation systems serving multiple dwelling units, design includes automatic pump controls per 170.2(d) or 180.1(b)3 for additions.
05	<input type="checkbox"/>	<input type="checkbox"/>	<input checked="" type="checkbox"/>	For recirculation systems serving individual dwelling units, design includes manual on/off controls as specified in Reference Appendix RA4.4.9 per 170.2(d).
06	<input type="checkbox"/>	<input type="checkbox"/>	<input checked="" type="checkbox"/>	Combustion air positive shut-off shall be provided per 160.4(3) on all newly installed commercial boilers as follows: • Boilers with input capacity >= 2.5 MMBtu/h, in which the boiler is designed to operate with a nonpositive vent static pressure • Boilers where one stack serves two or more boilers with a total combined input capacity per stack of 2.5 MMBtu/h.
07	<input type="checkbox"/>	<input type="checkbox"/>	<input checked="" type="checkbox"/>	Boiler combustion air fans with motor >= 10 hp shall meet one of the following • The fan motor shall be driven by a variable speed drive OR • The fan motor shall include controls that limit the fan motor demand to <=30% of the total design wattage at 50% of the design air volume.
08	<input type="checkbox"/>	<input type="checkbox"/>	<input checked="" type="checkbox"/>	Newly installed boilers with an input capacity [d.gte/] 5MMBtu/h and a steady state full-load combustion efficiency < 90% shall maintain excess (stack-gas) oxygen concentrations <= 5% by volume on a dry basis over firing rates of 20-100%. Combustion air volume shall be controlled with respect to firing rate or flue gas oxygen concentration. Use of a common gas and combustion air control linkage or jack shaft is prohibited.

Registration Number: CA Building Energy Efficiency Standards - 2022 Low-rise Multifamily Compliance
 Generated Date/Time: Report Version: 2022.0.000 Schema Version: rev 20220101
 Documentation Software: Energy Code Ace
 Compliance ID: 101099-0423-0003 Report Generated: 2023-04-13 08:20:19

Consultant:



Blanchard AE Group

1425 WAKARUSA DR. STE B
 LAWRENCE, KS 66049
 PH: 785.993.0300
 AEGROUP@BAE.GROUP



COPYRIGHT 2023
 THIS DRAWING IS AN INSTRUMENT OF SERVICE AND AS SUCH REMAINS THE PROPERTY OF CHIPOTLE MEXICAN GRILL, INC. PERMISSION FOR USE OF THIS DOCUMENT IS LIMITED AND CAN BE EXTENDED ONLY BY WRITTEN AGREEMENT WITH CHIPOTLE MEXICAN GRILL, INC.



CHIPOTLE MEXICAN GRILL, INC.
 PO BOX 182566
 COLUMBUS, OH 43218-2566
 TELEPHONE: (614) 318-2400
 INTERNET: WWW.CHIPOTLE.COM

STORE NO.: 4903
 NAVAJO RD & LAKE MURRAY
 8856 Navajo Rd.
 San Diego, CA 92119

Issue Record:

04/17/2023	PERMIT ISSUE

Revisions:

Drawn: JJD Checked: JJD

Project No: 231010

Contents:

MECHANICAL TITLE
 24 COMPLIANCE

M022

STATE OF CALIFORNIA
Domestic Water Heating System CALIFORNIA ENERGY COMMISSION

CERTIFICATE OF COMPLIANCE		LMCC-PLB-01-E
Project Name: Chipotle - Navajo Rd & Lake Murray	Report Page:	(Page 7 of 8)
Date Prepared:		

I. DECLARATION OF REQUIRED CERTIFICATES OF INSTALLATION
Selections have been made based on information provided in this document. If any selection have been changed by permit applicant, an explanation should be included in Table E. Additional Remarks. These documents must be provided to the building inspector during construction and can be found online.

Form/Title

LMCI-PLB-01-E - Must be submitted for all buildings

J. DECLARATION OF REQUIRED CERTIFICATES OF ACCEPTANCE
There are no forms required for this project.

K. DECLARATION OF REQUIRED CERTIFICATES OF VERIFICATION
There are no forms required for this project.

Registration Number: CA Building Energy Efficiency Standards - 2022 Low-rise Multifamily Compliance
 Generated Date/Time: Report Version: 2022.0.000 Schema Version: rev 20220101
 Documentation Software: Energy Code Ace
 Compliance ID: 101099-0423-0003
 Report Generated: 2023-04-13 08:20:19

STATE OF CALIFORNIA
Mechanical Systems CALIFORNIA ENERGY COMMISSION

CERTIFICATE OF COMPLIANCE		LMCC-MCH-01-E
Project Name: Chipotle - Navajo Rd & Lake Murray	Report Page:	(Page 8 of 8)
Date Prepared:		

DOCUMENTATION AUTHOR'S DECLARATION STATEMENT
I certify that this Certificate of Compliance documentation is accurate and complete.

Documentation Author Name: Isaac Dunn	Documentation Author Signature: Isaac Dunn
Company: BAE Group	Signature Date: 13APR23
Address: 1425 Wakarusa Dr.	CIA/ HERS Certification Identification (if applicable):
City/State/Zip: Lawrence/KS/66049	Phone: 785-993-0300

RESPONSIBLE PERSON'S DECLARATION STATEMENT
 I certify the following under penalty of perjury, under the laws of the State of California:

- The information provided on this Certificate of Compliance is true and correct.
- I am eligible under Division 3 of the Business and Professions Code to accept responsibility for the building design or system design identified on this Certificate of Compliance (responsible designer)
- The energy features and performance specifications, materials, components, and manufactured devices for the building design or system design identified on this Certificate of Compliance conform to the requirements of Title 24, Part 1 and Part 6 of the California Code of Regulations.
- The building design features or system design features identified on this Certificate of Compliance are consistent with the information provided on other applicable compliance documents, worksheets, calculations, plans and specifications submitted to the enforcement agency for approval with this building permit application.
- I will ensure that a completed signed copy of this Certificate of Compliance shall be made available with the building permit(s) issued for the building, and made available to the enforcement agency for all applicable inspections. I understand that a completed signed copy of this Certificate of Compliance is required to be included with the documentation the builder provides to the building owner at occupancy.

Responsible Designer Name: Laura Blanchard, PE	Responsible Designer Signature: Laura Blanchard
Company: BAE Group	Date Signed: 13APR23
Address: 1425 Wakarusa Dr.	License: M54017
City/State/Zip: Lawrence/KS/66049	Phone: 785-993-0300

Registration Number: CA Building Energy Efficiency Standards - 2022 Low-rise Multifamily Compliance
 Generated Date/Time: Report Version: 2022.0.000 Schema Version: rev 20220101
 Documentation Software: Energy Code Ace
 Compliance ID: 101099-0423-0004
 Report Generated: 2023-04-13 13:45:57

Consultant:



Blanchard AE Group

1425 WAKARUSA DR, STE B
 LAWRENCE, KS 66049
 PH: 785.993.0300
 AEGROUP@BAE.GROUP



COPYRIGHT 2023
 THIS DRAWING IS AN INSTRUMENT OF SERVICE AND AS SUCH REMAINS THE PROPERTY OF CHIPOTLE MEXICAN GRILL, INC. PERMISSION FOR USE OF THIS DOCUMENT IS LIMITED AND CAN BE EXTENDED ONLY BY WRITTEN AGREEMENT WITH CHIPOTLE MEXICAN GRILL, INC.



CHIPOTLE MEXICAN GRILL, INC.
 PO BOX 182566
 COLUMBUS, OH 43218-2566
 TELEPHONE: (614) 318-2400
 INTERNET: WWW.CHIPOTLE.COM

STORE NO.: 4903
 NAVAJO RD & LAKE MURRAY
 8856 Navajo Rd.
 San Diego, CA 92119

Issue Record:
 04/17/2023 PERMIT ISSUE

Revisions:

Drawn: _____ Checked: _____
 Author: _____ Checker: _____

Project No:
 231010

Contents:

MECHANICAL TITLE
 24 COMPLIANCE

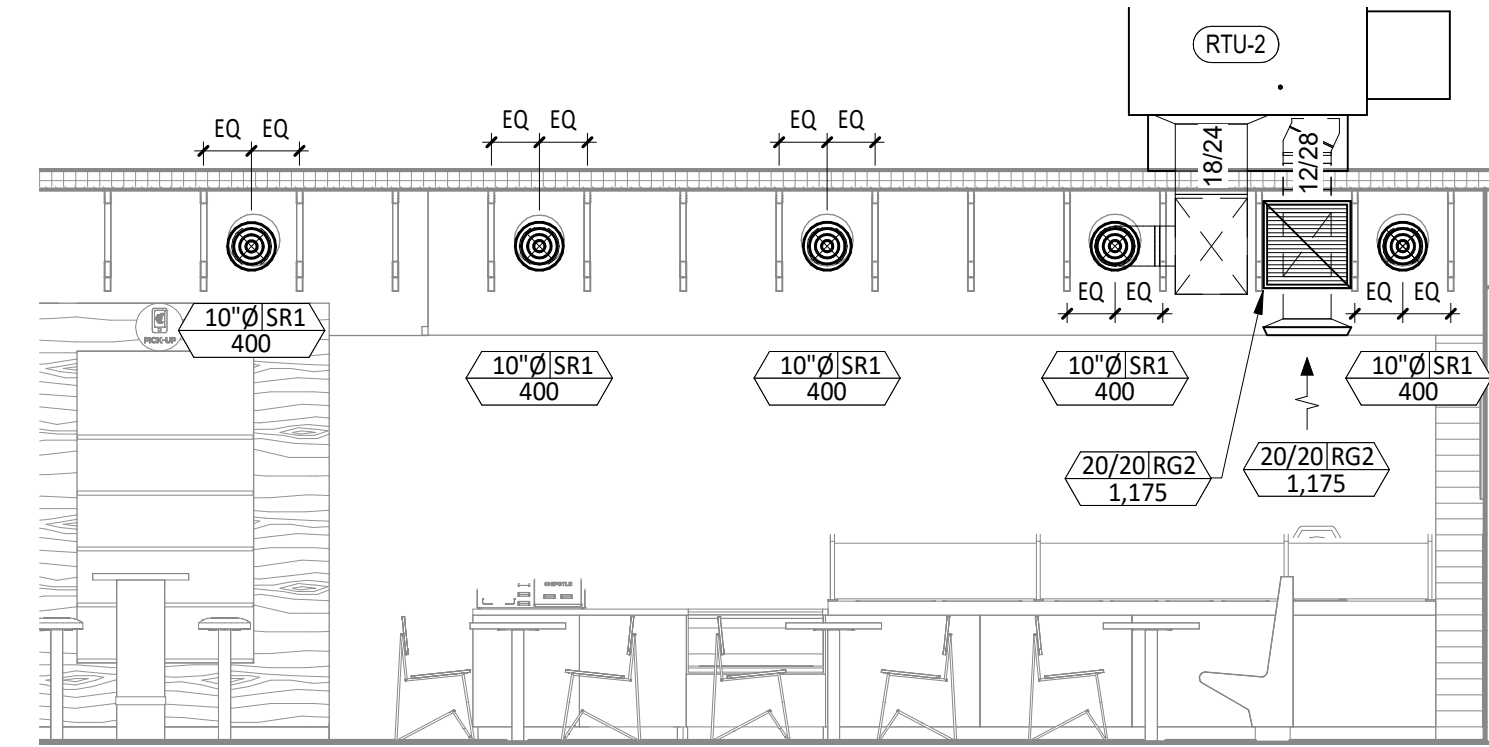
M023

HVAC PLAN NOTES

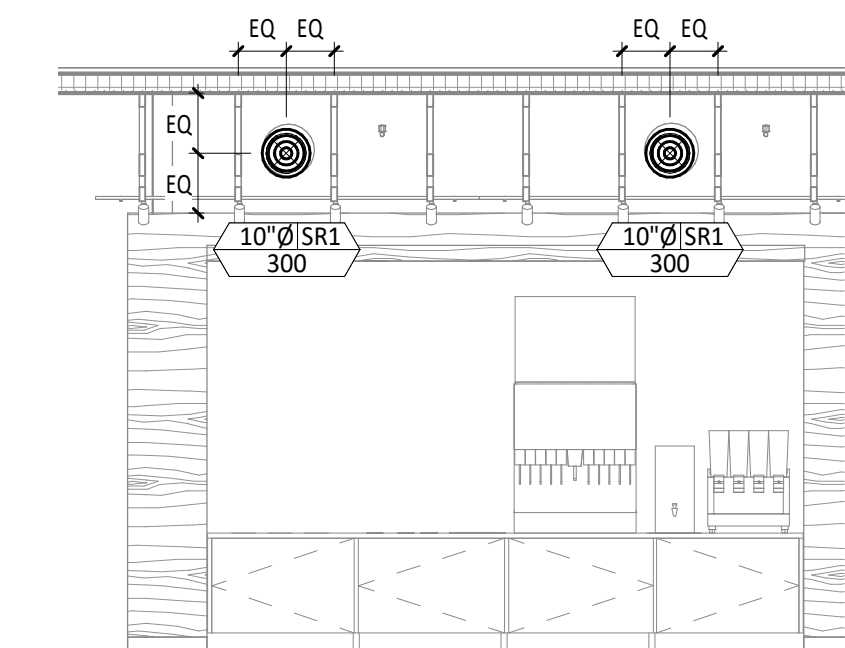
- SEE ARCHITECTURAL REFLECTED CEILING PLAN FOR CEILING MOUNTED EQUIPMENT LOCATION. TYPICAL.
- PAINT DUCTWORK VISIBLE THROUGH DINING ROOM SUPPLY REGISTERS BLACK. TYPICAL.
- PENETRATIONS THROUGH SHEAR WALL SHALL BE LIMITED TO 10" DIAMETER (OR A GROUP OF PENETRATIONS ALL CONTAINED WITHIN 10" DIAMETER). IF LARGER PENETRATIONS OR GROUPS OF PENETRATIONS ARE REQUIRED COORDINATE WITH STRUCTURAL ENGINEER FOR APPROPRIATE BRACING. SEE STRUCTURAL DRAWINGS FOR SHEAR WALL LOCATION.
- 12/28 DUCT UP FOR TRANSITION TO RTU-1 RETURN CONNECTION IN ROOF CURB. RTU-1 SHALL HAVE AN INTEGRAL SMOKE DETECTOR MOUNTED IN THE RETURN AIR STREAM. INTERLOCK SMOKE DETECTOR TO RTU-1 OPERATION.
- 12/28 DUCT UP FOR TRANSITION TO RTU-2 RETURN CONNECTION IN ROOF CURB. RTU-2 SHALL HAVE AN INTEGRAL SMOKE DETECTOR MOUNTED IN THE RETURN AIR STREAM. INTERLOCK SMOKE DETECTOR TO RTU-2 OPERATION. PROVIDE LINED DUCT AS NECESSARY.
- 20/22 DUCT UP FROM BUILDING SUPPLY THROUGH ROOF. TRANSITION TO RTU-1 SUPPLY CONNECTION IN ROOF CURB.
- 18/24 DUCT UP FROM BUILDING SUPPLY TO RTU-2 SUPPLY CONNECTION. TRANSITION IN ROOF CURB.
- NOT USED.
- 16/18 DUCT UP FROM HOOD THROUGH ROOF TO EF-1 COMPLIANT WITH NFPA 96. PROVIDE RADIUS ELBOWS WITH AN INSIDE RADIUS OF 0.5W AT ELBOWS IN GREASE DUCT.
- 8/6 DUCT UP THROUGH ROOF TO EF-2.
- NOT USED.
- NOT USED.
- INSTALL GRIDPOINT THERMOSTATS FURNISHED BY TEMS FOR RTU-1 AND RTU-2 AT THIS LOCATION AT 48" AFF. COORDINATE WITH ELECTRICAL SWITCHING IN THIS AREA. PROVIDE WIRING AS SHOWN IN DETAIL 8/E710.
- INSTALL GRIDPOINT ZONE SENSOR MODULE FURNISHED BY TEMS FOR RTU-1 AT THIS LOCATION 60" AFF DIRECTLY TO WALL (NO JUNCTION BOX). COORDINATE LOCATION WITH EQUIPMENT. PROVIDE WIRING AS SHOWN IN DETAIL 8/E710.
- INSTALL GRIDPOINT ZONE SENSOR MODULE FURNISHED BY TEMS FOR RTU-2 AT THIS LOCATION 66" AFF DIRECTLY TO WALL (NO JUNCTION BOX). COORDINATE LOCATION WITH EQUIPMENT. PROVIDE WIRING AS SHOWN IN DETAIL 8/E710.
- INSTALL GRIDPOINT SUPPLY PROBE FURNISHED BY TEMS FOR RTU-1 IN THE SUPPLY DUCTWORK UPSTREAM FROM THE FIRST BRANCH CONNECTION. PROVIDE WIRING AS SHOWN IN DETAIL 8/E710.
- INSTALL GRIDPOINT SUPPLY PROBE FURNISHED BY TEMS FOR RTU-2 IN THE SUPPLY DUCTWORK UPSTREAM FROM THE FIRST BRANCH CONNECTION. PROVIDE WIRING AS SHOWN IN DETAIL 8/E710.
- INSTALL REMOTE TEMPERATURE SENSOR FOR HOOD HD-1 AT THIS LOCATION 66" AFF. COORDINATE LOCATION WITH EQUIPMENT. PROVIDE (2) #18 G. THERMISTOR CABLE FROM TEMPERATURE SENSOR TO HOOD CONTROL PANEL.

HVAC PLAN NOTES

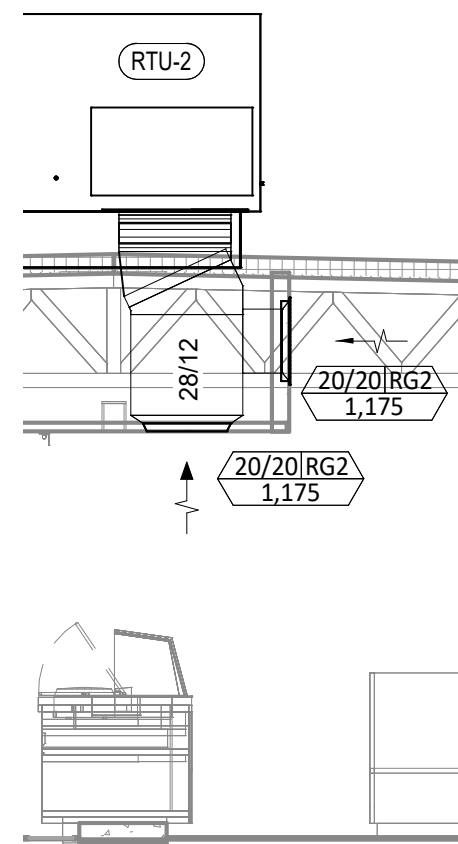
- INSTALL KITCHEN HOOD, HD-1. SUPPORT HOOD PER MANUFACTURER'S INSTALLATION INSTRUCTIONS AND AS DETAILED IN THE ARCHITECTURAL AND STRUCTURAL DRAWINGS. INSTALL HOOD ACCORDING TO THE REQUIREMENTS OF ITS LISTING, IN COMPLIANCE WITH NFPA 96, THE BUILDING CODE, AND AUTHORITIES HAVING JURISDICTION. HOOD SHALL HAVE AN INTEGRAL DUCT COLLAR TEMPERATURE SENSOR TO AUTOMATICALLY ENERGIZE THE EXHAUST AND MAKEUP AIR FANS IF COOKING TEMPERATURES ARE DETECTED. EXHAUST DUCT SYSTEM TO BE WELDED OR FACTORY-MANUFACTURED WATER AND AIR TIGHT. INSTALL CLEANOUTS PER CODE AND AS SHOWN. INSTALL HOOD PER DETAILS 2, 4, AND 9/M700. CHIPOTLE WILL PROVIDE AN INDEPENDENT TESTING AGENCY FOR TESTING THE INTEGRITY OF THE GREASE DUCT SYSTEM.
- INSTALL REMOTE CONDENSING UNIT FOR WALK-IN COOLER ON ROOF AS DETAILED IN THE ARCHITECTURAL AND STRUCTURAL DRAWINGS. INSTALL REFRIGERANT LINE SET, THERMOSTATIC EXPANSION VALVE, SOLENOID VALVE, TEMPERATURE CONTROL, SIGHT GLASS, FILTER DRIER, PRESSURE CONTROL, LOW AMBIENT CONTROLS, AND WEATHERPROOF HOUSING. TRAP AND SLOPE REFRIGERANT LINES PER MANUFACTURER'S RECOMMENDATIONS. INSTALLATION SHALL COMPLY WITH ASHRAE/ANSI STANDARD 15. INSTALL THE REFRIGERANT LINE SET UNDER THE ROOF DECK TO WITHIN 3' OF THE REMOTE CONDENSER. IF REFRIGERANT PIPING TO ICE MAKER IS EXPOSED TO PUBLIC VIEW CONCEAL WITHIN A STAINLESS STEEL SHROUD AS SHOWN IN THE ARCHITECTURAL DRAWINGS.
- INSTALL ROOFTOP EQUIPMENT PER MANUFACTURER'S INSTALLATION INSTRUCTIONS AND AS DETAILED IN THE ARCHITECTURAL AND STRUCTURAL DRAWINGS.
- INSTALL EXHAUST FAN EF-1 PER DETAIL 5/M700 AND AS DETAILED IN THE ARCHITECTURAL AND STRUCTURAL DRAWINGS. INSTALL GREASE VIROGUARD SYSTEM FURNISHED BY CHIPOTLE ON EXHAUST FAN, EF-1.
- PROVIDE SUPPLY DIFFUSER CONNECTION TO SUPPLY SYSTEM PER DETAIL 1/M700. TYPICAL.
- PROVIDE AUDIO/VISUAL REMOTE SMOKE DETECTOR ANNUNCIATOR WITH REMOTE KEY OPERATED RESET. WIRE A UNIT BACK TO EACH SMOKE DETECTOR. MOUNT UNIT 60" AFF. TYPICAL.
- INSTALL REME HALO AIR PURIFIER FURNISHED BY TUV IN RTU PER DETAIL 6/M700. SEE ELECTRICAL DRAWINGS FOR POWER CONNECTION INFORMATION. INSTALL UV WARNING STICKERS ON FACE OF ENCLOSURE PER DETAIL AND ON ANY RTU ACCESS DOOR(S) THROUGH WHICH THE REME HALO WOULD BE VISIBLE IF OPENED.
- ADJUST SUPPLY REGISTERS SO THAT SUPPLY AIR HITS WALL ON OPPOSITE SIDE OF ROOM AT APPROXIMATELY 7' AFF WITH NO DRAFTS FELT IN THE DINING ROOM.



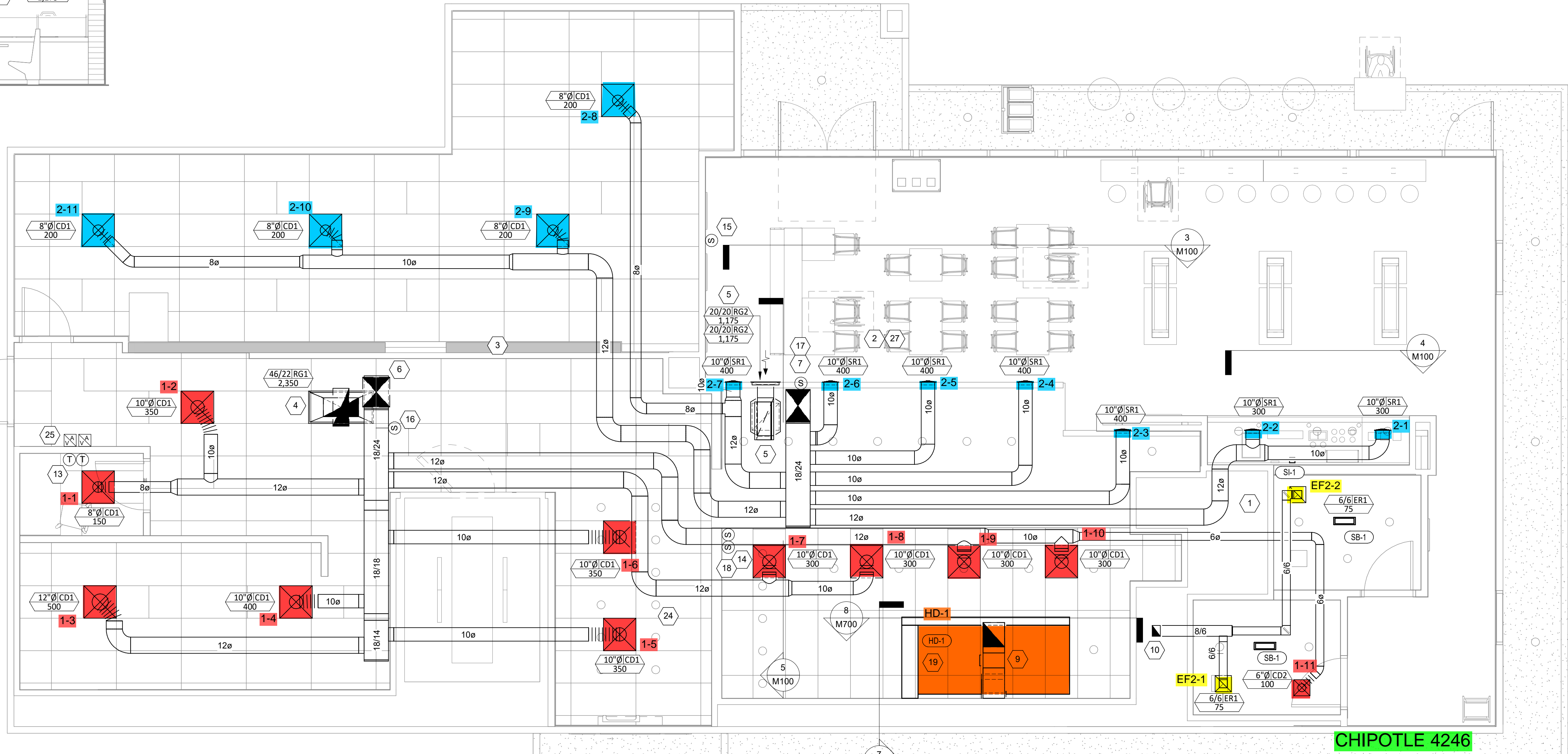
HVAC DINING ROOM SECTION
1/4" = 1'-0"



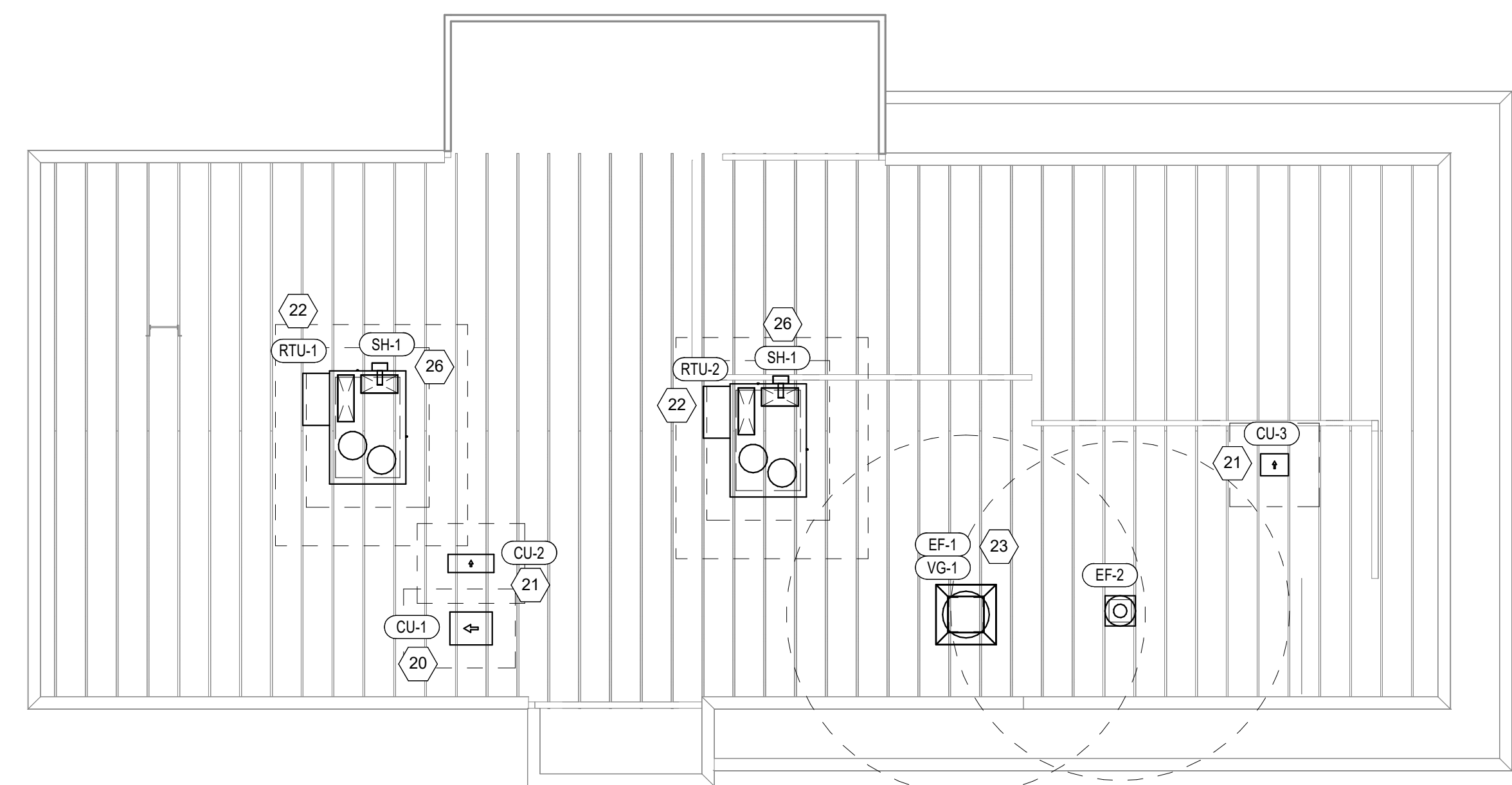
HVAC DINING ROOM SECTION
1/4" = 1'-0"



HVAC DINING ROOM RETURN SECTION
1/4" = 1'-0"



HVAC FLOOR PLAN
1/4" = 1'-0"



HVAC ROOF PLAN
1/8" = 1'-0"

Blanchard AE Group
1425 WAKARUSA DR. STE B
LAWRENCE, KS 66049
PH: 785.993.0300
AEGROUP@BAE.GROUP

REGISTERED PROFESSIONAL ENGINEER
MICHELLE MURRAY
M 34017
EXP. 2.31.2024
MECHANICAL
STATE OF CALIFORNIA
4-17-2023

COPYRIGHT 2023
THIS DRAWING IS AN INSTRUMENT OF SERVICE AND AS SUCH REMAINS THE PROPERTY OF CHIPOTLE MEXICAN GRILL, INC. PERMISSION FOR USE OF THIS DOCUMENT IS LIMITED AND CAN BE EXTENDED ONLY BY WRITTEN AGREEMENT WITH CHIPOTLE MEXICAN GRILL, INC.

CHIPOTLE MEXICAN GRILL

CHIPOTLE MEXICAN GRILL, INC.
PO BOX 182566
COLUMBUS, OH 43218-2566
TELEPHONE: (614) 318-2400
INTERNET: WWW.CHIPOTLE.COM

STORE NO.: 4903
NAVAJO RD & LAKE MURRAY
8856 Navajo Rd.
San Diego, CA 92119

Issue Record:

04/17/2023	PERMIT ISSUE

Revisions:

Drawn: JUD
Checked: AJD

Project No:
231010

Contents:

HVAC PLAN

M100



Blanchard AE Group

1425 WAKARUSA DR. STE B
LAWRENCE, KS 66049
PH: 785.993.0300
AEGROUP@BAE.GROUP



COPYRIGHT 2023
THIS DRAWING IS AN INSTRUMENT OF SERVICE AND AS SUCH REMAINS THE PROPERTY OF CHIPOTLE MEXICAN GRILL, INC. PERMISSION FOR USE OF THIS DOCUMENT IS LIMITED AND CAN BE EXTENDED ONLY BY WRITTEN AGREEMENT WITH CHIPOTLE MEXICAN GRILL, INC.



CHIPOTLE MEXICAN GRILL, INC.
PO BOX 182566
COLUMBUS, OH 43218-2566
TELEPHONE: (614) 318-2400
INTERNET: WWW.CHIPOTLE.COM

STORE NO.: 4903
NAVAJO RD & LAKE MURRAY
8856 Navajo Rd.
San Diego, CA 92119

Issue Record:
04/17/2023 PERMIT ISSUE

Revisions:

Drawn: JJD
Checked: AJD

Project No:
231010

Contents:
HVAC SCHEDULES

M600

SANITIZING EQUIPMENT SCHEDULE							
TAG	COUNT	DESCRIPTION	FURNISHED BY	INSTALLED BY	MANUFACTURER	MODEL	REMARKS
SB-1	2	BATHROOM AIR PURIFICATION UNIT	TUV	GC	RGF ENVIRONMENTAL GROUP	BRU ASSEMBLY	SEE ELECTRICAL SHEETS FOR CONNECTION INFORMATION
SH-1	2	HVAC AIR PURIFICATION UNIT	TUV	GC	RGF ENVIRONMENTAL GROUP	REME-HALO	SEE DETAIL 6/M700 FOR INSTALLATION INFORMATION.
SI-1	2	ICE MACHINE TREATMENT SYSTEM	TUV	GC	RGF ENVIRONMENTAL GROUP	IMS-B-GA	SEE PLUMBING DRAWINGS FOR INSTALLATION INFORMATION.

VENTILATION SCHEDULE										
Room Name	Area (SQ. FT.)	People / 1000 sq ft	sq ft / person	Code People	Actual People	Actual sqft/person	O/A CFM /Person	O/A CFM /SQ.FT	O/A CFM	E/A CFM
KITCHEN	1188	20	50.00	20.00	10.0	118.8	7.5	0.12	217.6	2550.0
DINING	935	70	14.29	70.00	50.0	18.7	7.5	0.18	543.3	-
STORAGE	658	-	-	-	-	-	-	0.12	79.0	-
OFFICE	50	5	200.00	5.00	1.0	50.0	5	0.06	8.0	-
RR	-	-	-	-	-	-	-	-	-	200.0

FAN SCHEDULE											
TAG	DESCRIPTION	AIRFLOW	E.S.P.	WEIGHT	ELECTRICAL		FURNISHED BY	INSTALLED BY	BASIS FOR DESIGN		REMARKS
					MOTOR POWER	V/P/H			MANUFACTURER	MODEL	
EF-1	UPBLAST UL762 EXHAUST FAN	1,900 CFM	1.20 in-wg	400 lb	2 hp	208/3/60	HS	GC	CAPTIVE-AIRE	DU180HFA	DIRECT DRIVE UL762 UPBLAST EXHAUST FAN FURNISHED WITH WEATHERPROOF DISCONNECT AND VENTED ROOF CURB
EF-2	DOWNBLAST RESTROOM EXHAUST FAN	150 CFM	0.60 in-wg	100 lb	0.18 hp	120/1/60	HS	GC	CAPTIVE-AIRE	DR12HFA	DIRECT DRIVE DOWNBLAST RESTROOM EXHAUST FAN FURNISHED WITH INTEGRAL DISCONNECT, SPEED CONTROL, BACKDRAFT DAMPER, AND CURB

VIROGUARD SCHEDULE							
TAG	COUNT	DESCRIPTION	DUCT CONNECTION SIZE	FAN	FURNISHED BY	INSTALLED BY	BASIS FOR DESIGN MANUFACTURER
VG-1	1	VIROGUARD HOOD EXHAUST FAN ROOFTOP CONTAINMENT SYSTEM	16" X 16"	CAPTIVE-AIRE DU180HFA	TDC	GC	ENVIROMATIC

CONDENSING UNIT SCHEDULE															
TAG	DESCRIPTION	NOMINAL CAPACITY	NUMBER OF		REFRIGERANT		WEIGHT	ELECTRICAL			FURNISHED BY	INSTALLED BY	BASIS FOR DESIGN		REMARKS
			COMPRESSORS	CIRCUITS	TYPE	CHARGE		MOCP	FLA	V/P/H			MANUFACTURER	MODEL	
CU-1	CONDENSING UNIT - WALK-IN COOLER		1	1	R-404A	10.4 lb	250 lb	15 A	9 A	208/3/60	WCS	GC	HARFORD	KPCL99MZOP-3E	FURNISHED WITH WALK-IN COOLER
CU-2	REMOTE CONDENSER - LOW CAPACITY ICE MAKER		0	1	R-404A	11.46 lb	100 lb			120/1/60	KES	GC	HOSHIZAKI	URC-9F	FURNISHED WITH ICE MAKER
CU-3	REMOTE CONDENSER - SODA MACHINE ICE MAKER		0	1	R-404A	3.86 lb	100 lb			120/1/60	KES	GC	HOSHIZAKI	URC-5F	FURNISHED WITH ICE MAKER

KITCHEN HOOD SCHEDULE																
TAG	DESCRIPTION	MAX COOKING TEMP.	AIRFLOW	E.S.P.	EXHAUST PLENUM				NO. OF LIGHT FIXTURES	WEIGHT	FURNISHED BY	INSTALLED BY	BASIS FOR DESIGN		REMARKS	
					NO.	WIDTH	LENGTH	WIDTH					MANUFACTURER	MODEL		
HD-1	TYPE I CANOPY HOOD WITH PERFORATED MAU AND AC SUPPLY PLENUMS	600 °F	1,900 CFM	0.92 in-wg	1	10"	1' - 6"	9' - 4"	4' - 3"	6	1,100 lb	HS	GC	CAPTIVE-AIRE	5424 ND-2-ACPSP-F	MAT'L: 18 GA. TYPE 430 SS. FURNISHED WITH WIDE VERTICAL END PANELS, VAPORPROOF INCANDESCENT LIGHT FIXTURES, 16" TALL HE SS FILTERS, INTEGRAL UTILITY CABINET, ANSUL SYSTEM, DUCT COLLAR TEMPERATURE SENSOR, PREWIRE PACKAGE, SPARE FIRE SYSTEM DRY CONTACT, AND 4-POLE 20A CONTACTOR

ROOFTOP UNIT SCHEDULE																				
TAG	DESCRIPTION	NOMINAL CAPACITY	AIRFLOW		E.S.P. (IN. W.C.)	NET COOLING CAPACITY			HEATING CAPACITY			ELECTRICAL			BASIS FOR DESIGN		REMARKS			
			TOTAL	OA		TOTAL (MBH)	SENSIBLE (MBH)	EAT	COND. EAT	INPUT (BTU/h)	OUTPUT (BTU/h)	EAT	WEIGHT	MOCP	MCA	V/P/H		MANUFACTURER	MODEL	
RTU-1	KITCHEN ROOFTOP UNIT	8.5 ton	3,400 CFM	1,050 CFM	0.8	93.0	75.9	80 °F	67 °F	95 °F	224,000	181,000	70 °F	1,100 lb	50 A	41 A	208/3/60	CARRIER	48FCFM09	FURNISHED WITH COMP. ENTHALPY ECON., BAROMETRIC RELIEF, RET. SMOKE DETECTOR W/ REMOTE KEYED ANNUNCIATOR/RESET, M.O.D., MERV-8 FILTERS, CURB, HAIL GUARD, TOOLLESS HINGED ACCESS PANELS, FACTORY MOUNTED DISCONNECT, & UNIT-MOUNTED FIELD WIRED CONVENIENCE RECEPTACLE
RTU-2	DINING ROOM ROOFTOP UNIT	8.5 ton	3,400 CFM	1,050 CFM	0.8	93.0	75.9	80 °F	67 °F	95 °F	224,000	181,000	70 °F	1,100 lb	50 A	41 A	208/3/60	CARRIER	48FCFM09	FURNISHED WITH COMP. ENTHALPY ECON., BAROMETRIC RELIEF, RET. SMOKE DETECTOR W/ REMOTE KEYED ANNUNCIATOR/RESET, M.O.D., MERV-8 FILTERS, CURB, HAIL GUARD, TOOLLESS HINGED ACCESS PANELS, FACTORY MOUNTED DISCONNECT, & UNIT-MOUNTED FIELD WIRED CONVENIENCE RECEPTACLE

AIR BALANCE SCHEDULE				
TAG	SUPPLY FLOW	RETURN FLOW	EXHAUST FLOW	SUBTOTAL
EF-1	0 CFM	0 CFM	1,900 CFM	-1,900 CFM
EF-2	0 CFM	0 CFM	150 CFM	-150 CFM
RTU-1	3,400 CFM	2,350 CFM	0 CFM	1,050 CFM
RTU-2	3,400 CFM	2,350 CFM	0 CFM	1,050 CFM
NET PRESSURIZATION				50 CFM

CONTROL FUNCTIONS
A. THE MAIN COOKING EXHAUST FAN AND MAKE-UP AIR UNIT SHALL BE INTERLOCKED TO OPERATE TOGETHER. THIS CONTROL CIRCUIT IS ACTIVATED BY A SWITCH AND INCLUDES A FIRE PROTECTION OVERRIDE.
B. THE TEMPERATURE IN EACH ZONE IS CONTROLLED BY SPACE TEMPERATURE SENSORS CONNECTED TO THE THERMOSTATS LOCATED IN THE OFFICE. ALL ZONES SHALL OPERATE WITH CONTINUOUS FAN OPERATION DURING OCCUPIED TIMES AND INTERMITTENTLY AS NEEDED TO MAINTAIN SET POINTS DURING UNOCCUPIED TIMES. OUTSIDE AIR DAMPERS SHALL BE OPEN CONTINUOUSLY WHEN EITHER IN OCCUPIED MODE OR WHEN THE HOOD SYSTEM IS ON AND SHALL BE CLOSED DURING UNOCCUPIED PERIODS.
C. THE THERMOSTATS SHALL DETERMINE OCCUPIED/UNOCCUPIED STATUS BASED ON THE SCHEDULE IN THE ENERGY MANAGEMENT SYSTEM.

AIR TERMINAL SCHEDULE											
TAG	DESCRIPTION	FACE SIZE	MATERIAL	FINISH	MOUNTING	FURNISHED BY	INSTALLED BY	BASIS FOR DESIGN		NOTES	
								MANUFACTURER	MODEL		
CD1	PERFORATED CEILING DIFFUSER	24" X 24"	ALUMINUM	WHITE	LAY-IN CEILING	GC	GC	NAILOR	4320A TYPE L	PROVIDE WITH INTEGRAL OBD	
CD2	PERFORATED CEILING DIFFUSER	12" X 12"	ALUMINUM	WHITE	SURFACE MOUNT	GC	GC	NAILOR	4320A TYPE S	PROVIDE WITH INTEGRAL OBD	
ER1	PERFORATED CEILING EXHAUST	12" X 12"	ALUMINUM	WHITE	SURFACE MOUNT	GC	GC	NAILOR	4330R TYPE S	PROVIDE WITH INTEGRAL OBD	
RG1	PERFORATED CEILING RETURN	48" X 24"	ALUMINUM	WHITE	LAY-IN CEILING	GC	GC	NAILOR	4330R TYPE L		
RG2	PERFORATED CEILING RETURN	24" X 24"	ALUMINUM	WHITE	SURFACE MOUNT	GC	GC	NAILOR	4330R TYPE S		
SR1	ADJUSTABLE TURBO NOZZLE	SEE NECK SIZE	ALUMINUM	WHITE	WALL	GC	GC	AIR CONCEPTS	ANR-10	PROVIDE WITH CONCEALED MOUNTING AND FACE ACCESSIBLE OBD.	



Blanchard AE Group

1425 WAKARUSA DR. STE B
LAWRENCE, KS 66049
PH: 785.993.0300
AEGROUP@BAE.GROUP



COPYRIGHT 2023
THIS DRAWING IS AN INSTRUMENT OF SERVICE
AND AS SUCH REMAINS THE PROPERTY OF
CHIPOTLE MEXICAN GRILL, INC. PERMISSION FOR
USE OF THIS DOCUMENT IS LIMITED AND CAN BE
EXTENDED ONLY BY WRITTEN AGREEMENT WITH
CHIPOTLE MEXICAN GRILL, INC.



CHIPOTLE MEXICAN GRILL, INC.
PO BOX 182566
COLUMBUS, OH 43218-2566
TELEPHONE: (614) 318-2400
INTERNET: WWW.CHIPOTLE.COM

STORE NO.: 4903
NAVAJO RD & LAKE MURRAY
8856 Navajo Rd.
San Diego, CA 92119

Issue Record:
04/17/2023 PERMIT ISSUE

Revisions table with columns for revision number, description, and date.

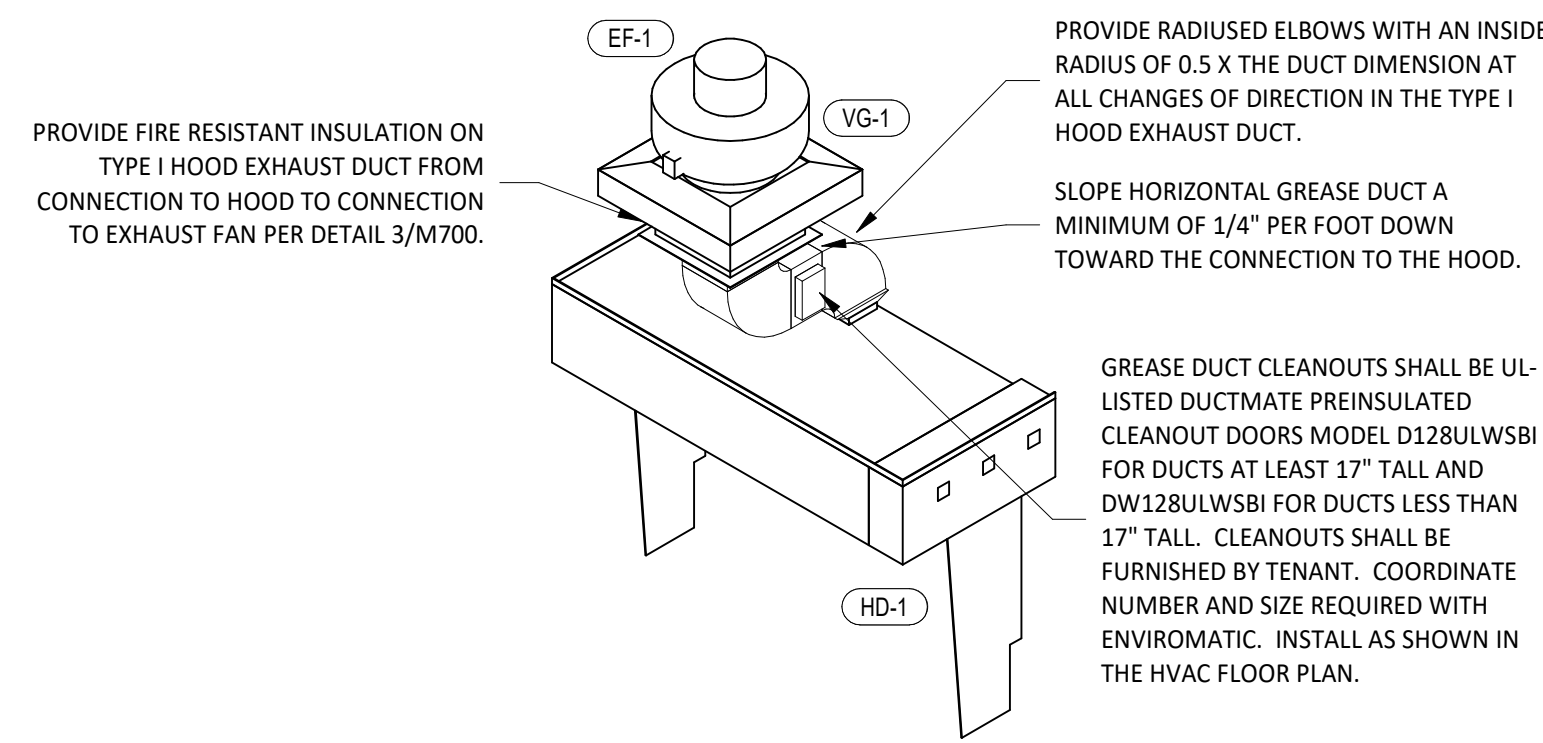
Drawn: JJD
Checked: AJD

Project No.: 231010

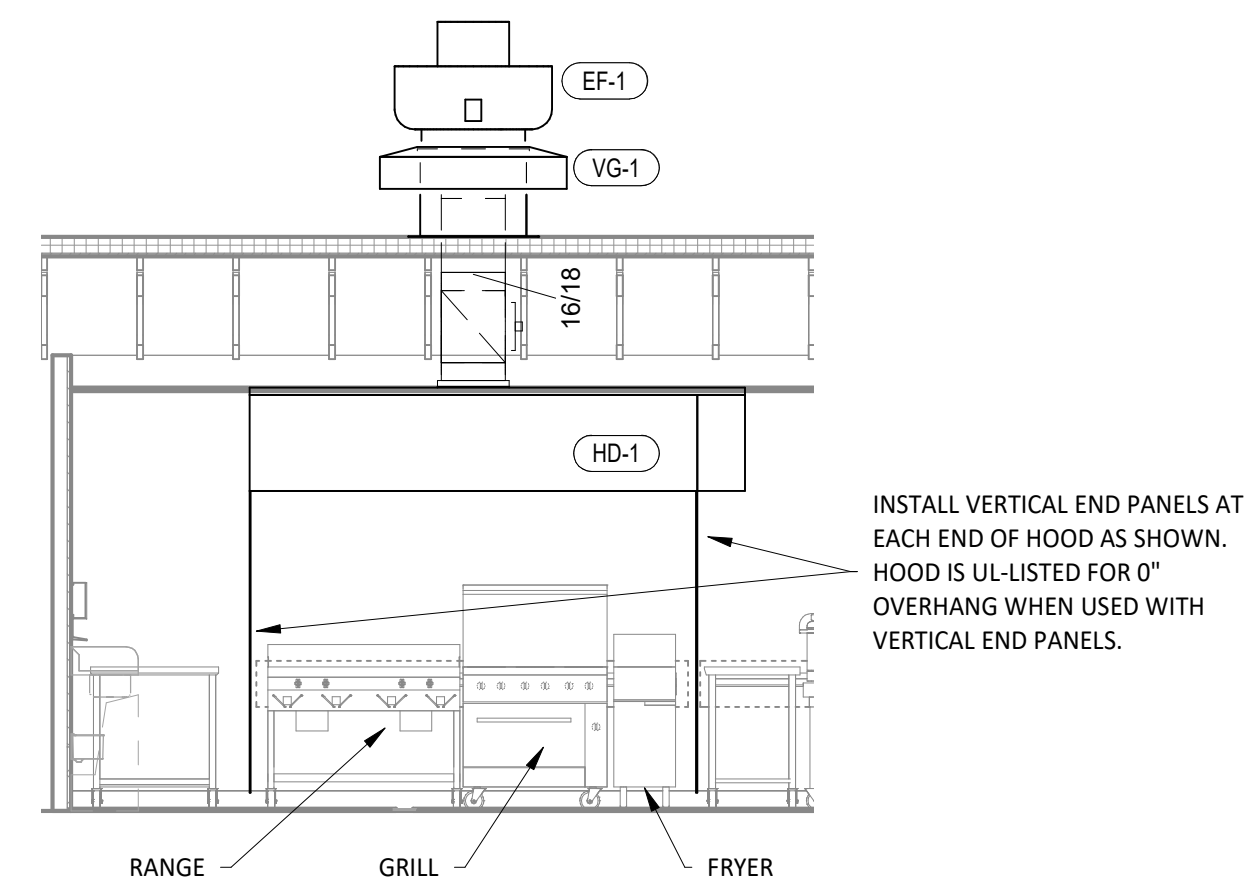
Contents:

HVAC DETAILS

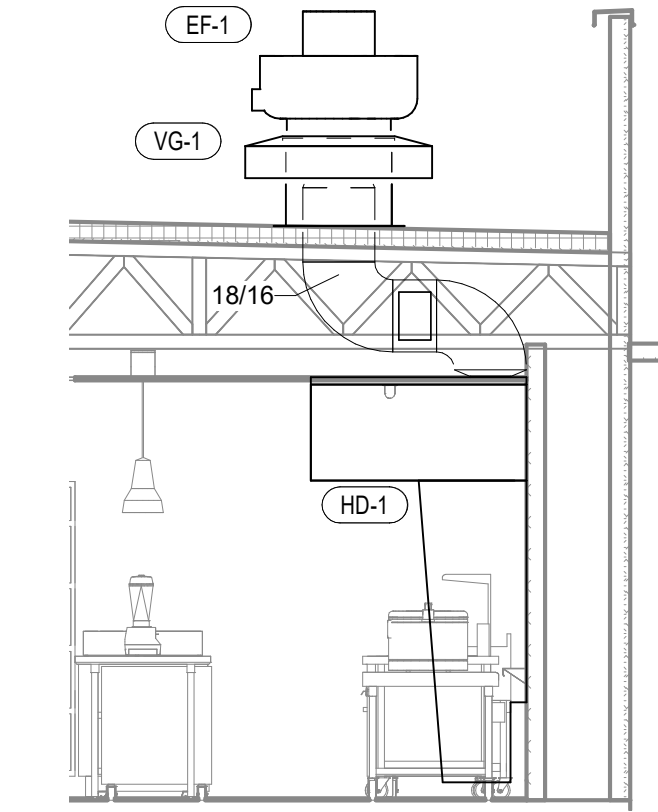
M700



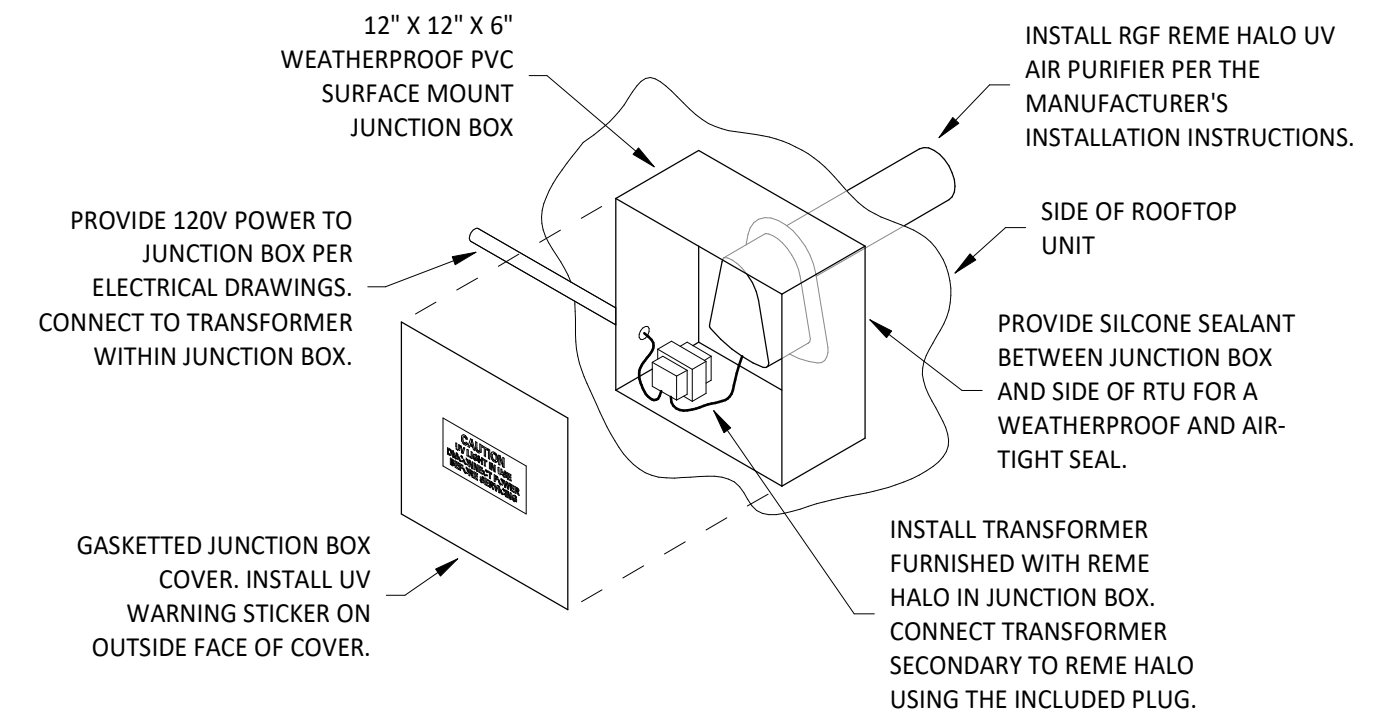
9 HOOD EXHAUST ISOMETRIC
M700 NOT TO SCALE



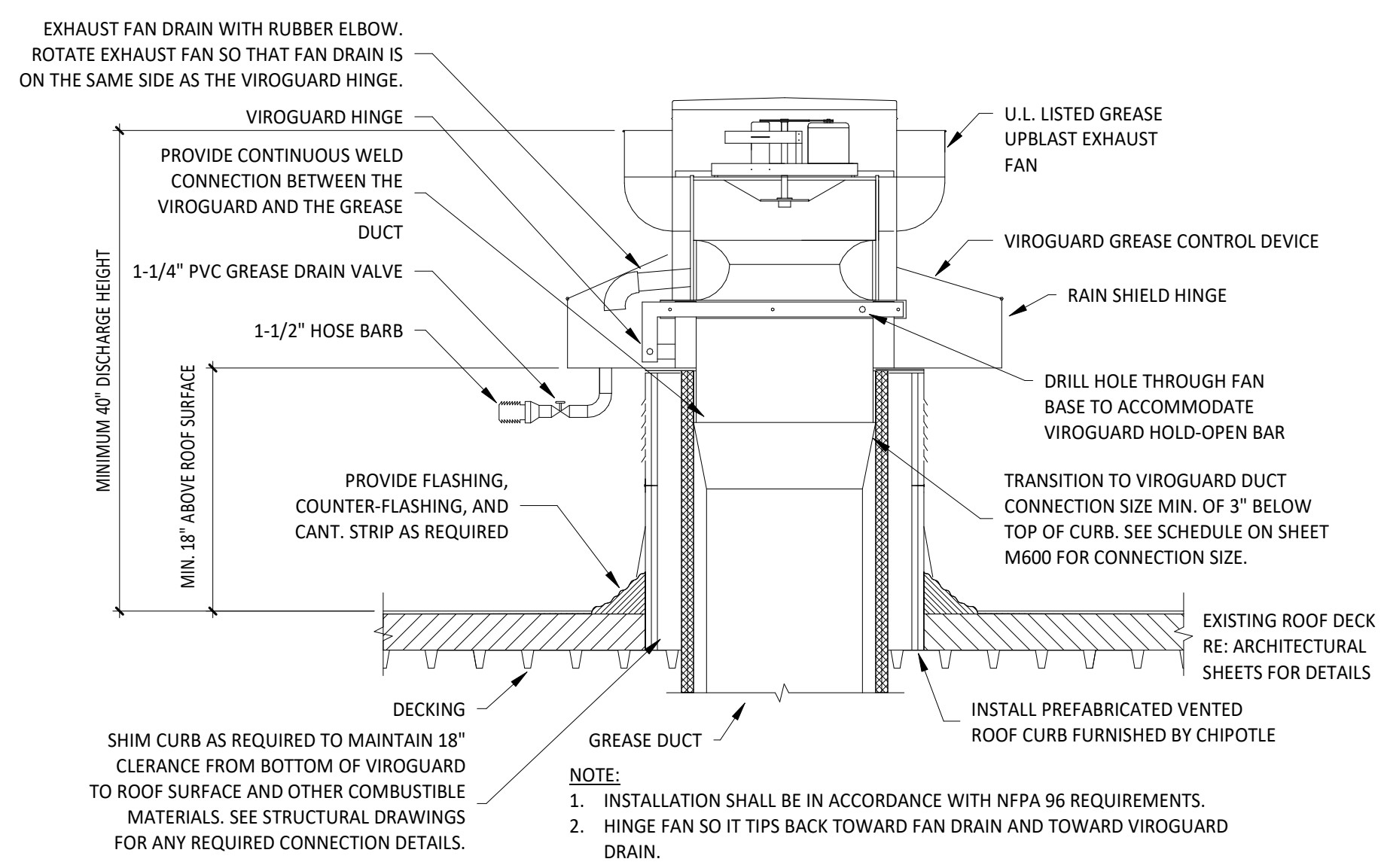
8 HOOD ELEVATION
M700 1/4" = 1'-0"



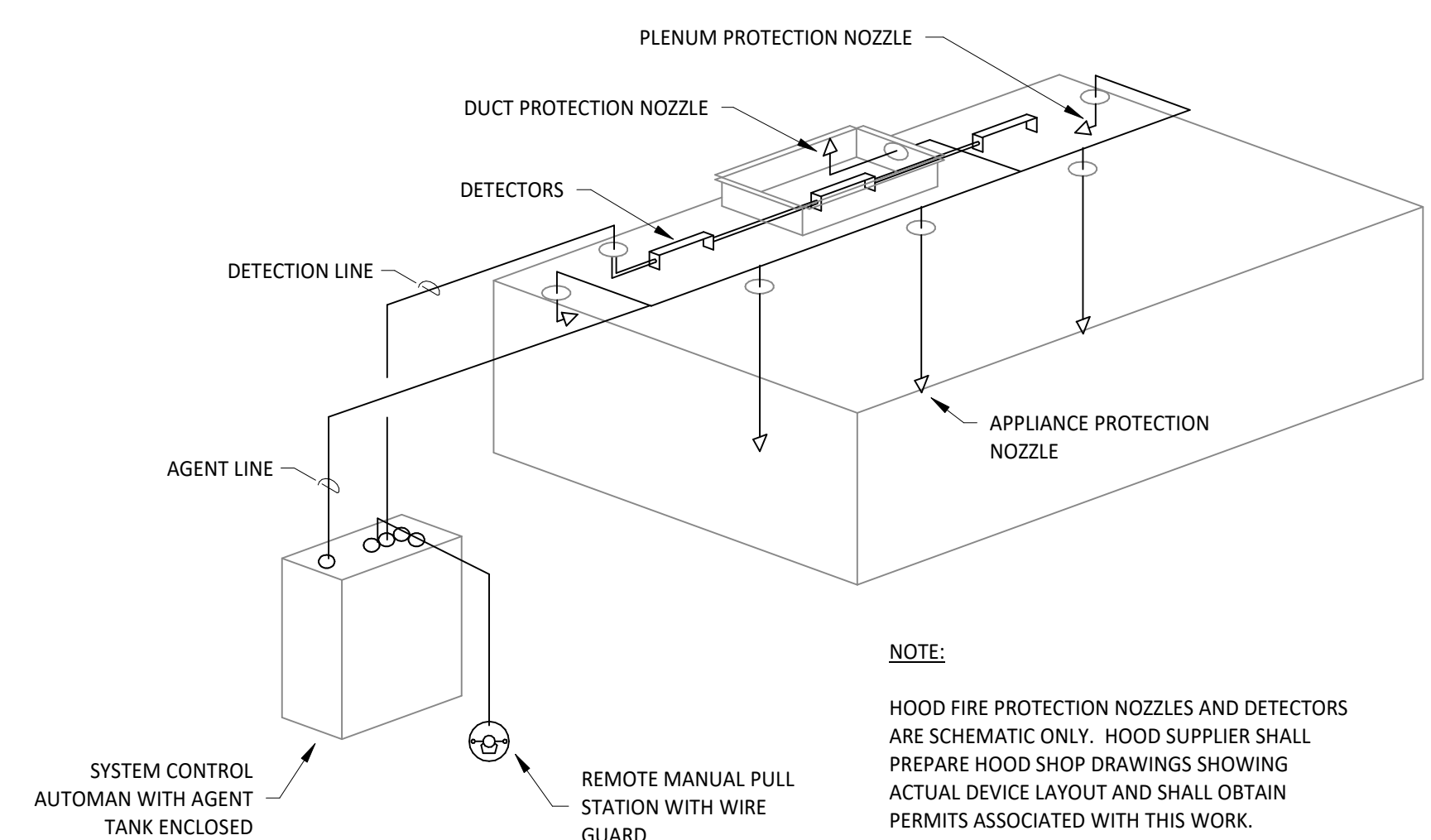
7 DUCT SECTION AT HOOD
M700 1/4" = 1'-0"



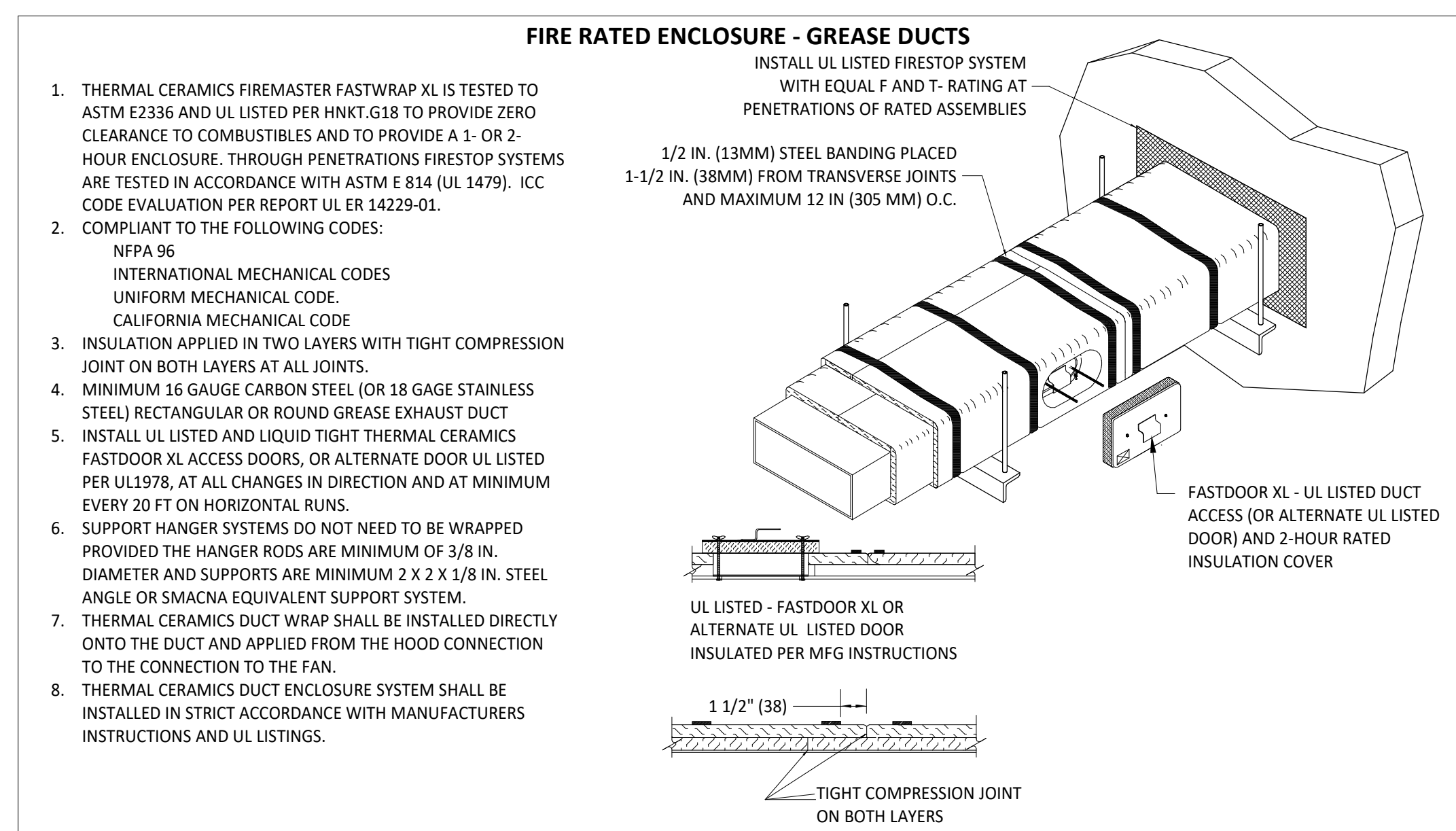
6 UV AIR PURIFIER INSTALLATION
M700 NOT TO SCALE



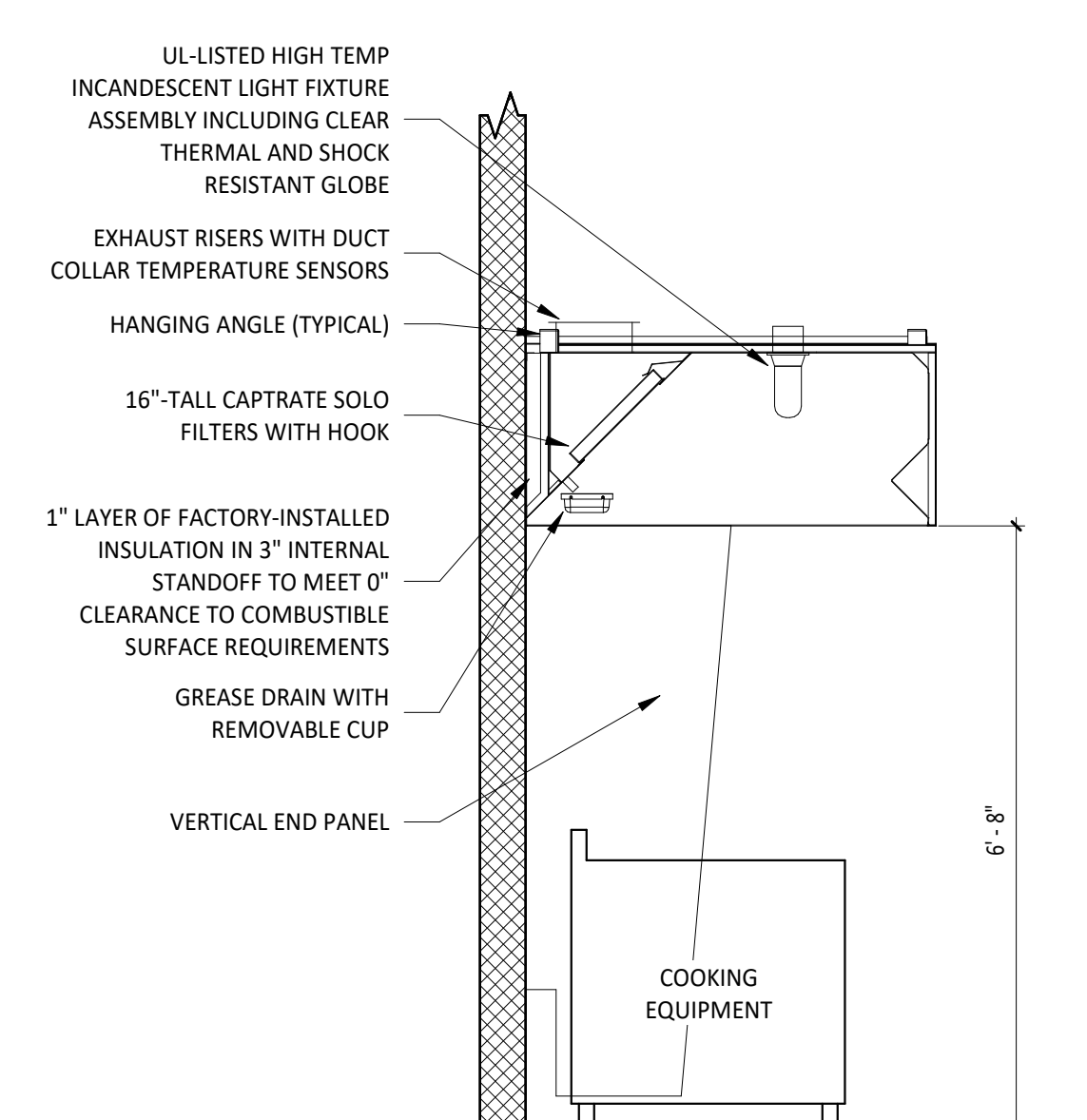
5 GREASE EXHAUST FAN
M700 NOT TO SCALE



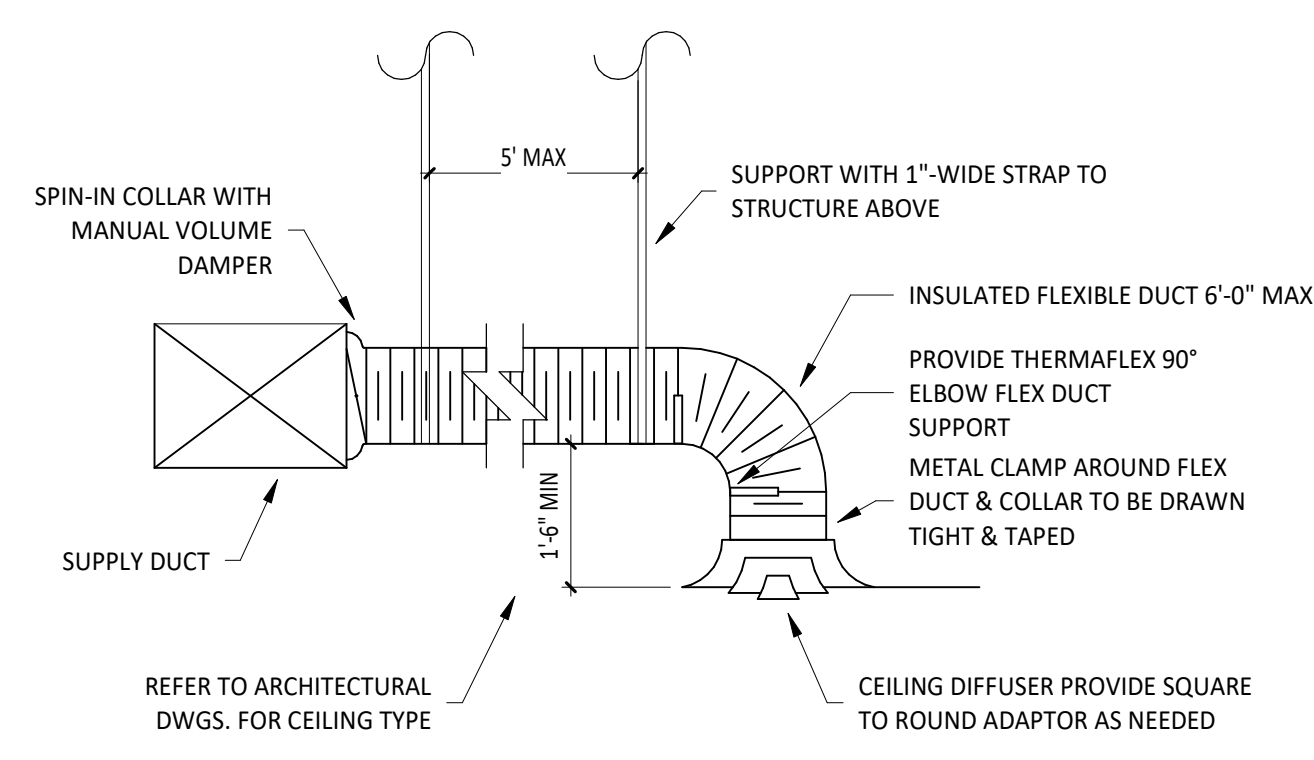
4 FIRE SUPPRESSION SYSTEM SCHEMATIC
M700 NOT TO SCALE



3 FIREMASTER DUCT WRAP - UL HNKT-G18
M700 NOT TO SCALE



2 HOOD SECTION VIEW
M700 NOT TO SCALE



1 DIFFUSER CONNECTION
M700 NOT TO SCALE