

**M1.2A KEYED NOTES:**

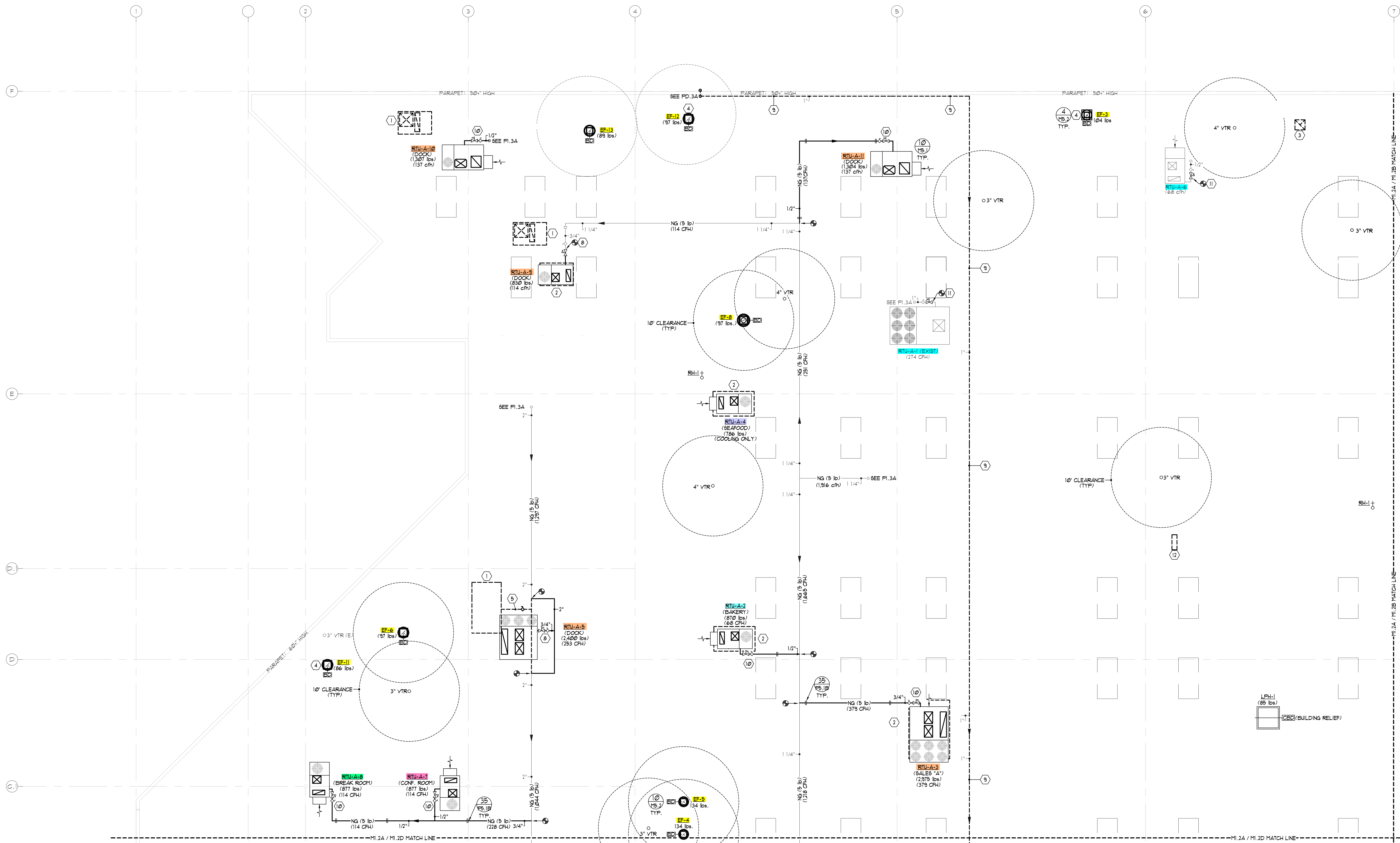
- 1 REMOVE RTU. CAP CURB.
- 2 REMOVE RTU AND REQUIRED DUCT DROPS TO ACCOMMODATE NEW EQUIPMENT BEING INSTALLED UTILIZING EXISTING ROOF OPENING.
- 3 REMOVE EXHAUST FAN. CAP CURB.
- 4 REMOVE FAN / CURB. NEW EXHAUST FAN TO UTILIZE EXISTING OPENING.
- 5 REMOVE NG PIPING TO ACCOMMODATE NEW RTU INSTALLATION.
- 6 P.C. TO STUB 1 1/2" WASTE PIPE THROUGH ROOF NO LESS THAN 18" FOR FINAL CONNECTIONS BY R.C. COORDINATE PRECISE LOCATION OF DRAIN W/ R.C.

**M1.2A KEYED NOTES:**

- 7 P.C. TO STUB 3/4" NON-POTABLE WATER PIPE THROUGH ROOF VALVE / CAP FOR FINAL CONNECTIONS BY R.C. COORDINATE PRECISE LOCATION OF CONNECTIONS W/ R.C.
- 8 PROVIDE / INSTALL 5 LB PRESSURE REGULATOR AND ALL FINAL CONNECTIONS TO EQUIPMENT BY OWNER.
- 9 REMOVE ABANDONED NG RISER AND INDICATED SECTION(S) OF PIPING.
- 10 PROVIDE / INSTALL VALVE 5 LB PRESSURE REGULATOR AND ALL FINAL CONNECTIONS TO EQUIPMENT BY OWNER.
- 11 PROVIDE / INSTALL NEW 5 LB REGULATOR AT EXISTING EQUIPMENT.
- 12 REMOVE CONDENSING UNIT.

**GENERAL NOTES:**

- 1 SEE P2.1A FOR RTU CONDENSATE REMOVAL TRAPPED LINES TO BE PROVIDED WITH PROTECTED VENT.
- 2 GENERAL CONTRACTOR IS RESPONSIBLE FOR THE PATCHING / REPAIRING OF ANY WALLS, FLOORS, CEILINGS, AND ROOFS NEEDED AS A RESULT OF WORK BEING PERFORMED.
- 3 GENERAL CONTRACTOR SHALL REMOVE ALL UNUSED / ABANDONED ITEMS FROM PROJECT.



**M1.2A MECHANICAL ROOF PLAN - 'A'**  
 SCALE: 1/8" = 1' - 0"



PRESCOTT MUIR ARCHITECT 171 WEST PIERPONT AVE. SALT LAKE CITY, UTAH 84101 TEL: 801.521.9111 FAX: 801.521.9158

MECHANICAL ENGINEERS PVE INC. 801.969.3158  
**SMITH'S FOOD AND DRUG STORE #303**  
 560 N STEPHANIE ST  
 HENDERSON, NV  
 DRAWN BY: BMS  
 DATE: 11.22.24  
 SHEET NO.: M1.2A  
 PVE PROJECT NO.: 2400414

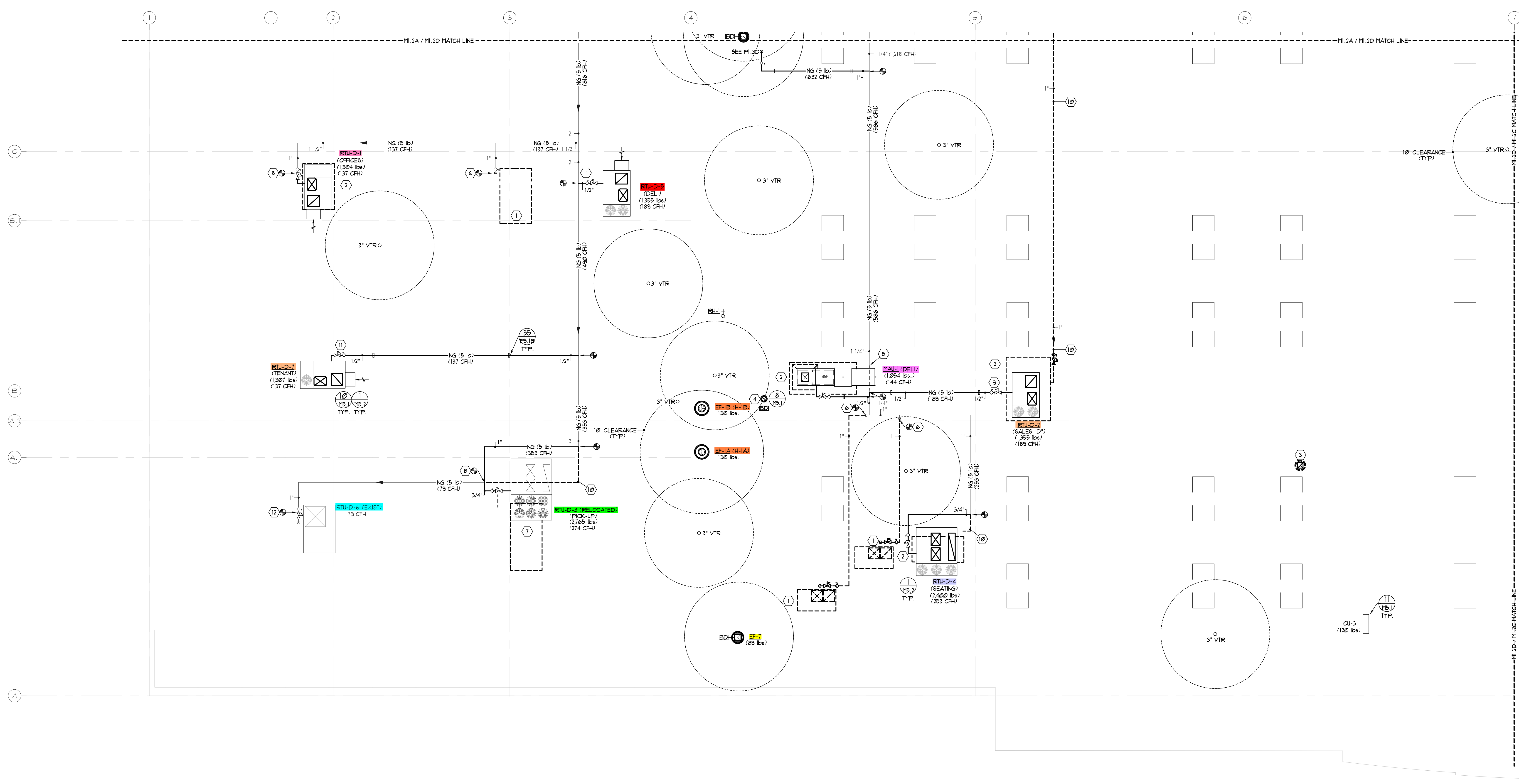
MECHANICAL ROOF PLAN - 'A'



- M1.2D KEYED NOTES:**
- 1 REMOVE RTU. CAP CURB.
  - 2 REMOVE RTU AND REQUIRED DUCT DROPS TO ACCOMMODATE NEW EQUIPMENT BEING INSTALLED UTILIZING EXISTING ROOF OPENING.
  - 3 REMOVE EXHAUST FAN. CAP CURB.
  - 4 TERMINATE STAINLESS DUCT FROM BELOW WITH INSECT SCREEN WEATHER PROOF CAP. SEE M1.D.
  - 5 FIELD VERIFY PIPE PLACEMENT / ROUTING. RE-ROUTE AS REQUIRED FOR INSTALLATION OF NEW EQUIPMENT.
  - 6 REMOVE NATURAL GAS CONNECTIONS / INDICATED SECTION(S) OF PIPING AND CAP.

- M1.2D KEYED NOTES:**
- 7 REMOVE RTU AND REQUIRED DUCT DROPS TO ACCOMMODATE RELOCATED EQUIPMENT BEING INSTALLED UTILIZING EXISTING ROOF OPENING. SEE M1.2C FOR RELOCATED RTU.
  - 8 DISCONNECT EXISTING RTU NG FOR UNIT TO BE REMOVED. PROVIDE / INSTALL 5 LB PRESSURE REGULATOR AND ALL FINAL CONNECTIONS TO NEW EQUIPMENT BY OWNER.
  - 9 DISCONNECT EXISTING RTU FOR UNIT TO BE REMOVED. PROVIDE / INSTALL VALVE, 5 LB PRESSURE REGULATOR, AND ALL FINAL CONNECTIONS TO NEW EQUIPMENT BY OWNER.
  - 10 REMOVE ABANDONED NG PIPING.
  - 11 PROVIDE / INSTALL VALVE, 5 LB PRESSURE REGULATOR, AND ALL FINAL CONNECTIONS TO NEW EQUIPMENT BY OWNER.
  - 12 PROVIDE / INSTALL NEW 5 LB REGULATOR AT EXISTING EQUIPMENT.

- GENERAL NOTES:**
- 1 SEE P2.1D FOR RTU CONDENSATE REMOVAL TRAPPED LINES TO BE PROVIDED WITH PROTECTED VENT.
  - 2 GENERAL CONTRACTOR IS RESPONSIBLE FOR THE PATCHING / REPAIRING OF ANY WALLS, FLOORS, CEILINGS, AND ROOFS NEEDED AS A RESULT OF WORK BEING PERFORMED.
  - 3 GENERAL CONTRACTOR SHALL REMOVE ALL UNUSED / ABANDONED ITEMS FROM PROJECT.



M1.2D MECHANICAL ROOF PLAN - "D"  
 SCALE: 1/8" = 1' - 0"  
 6' 4' 8' 12' 16'

PRESCOTT MUIR ARCHITECT • 171 WEST PIERPONT AVE. • SALT LAKE CITY, UTAH 84101 • TEL: 801.521.9111 FAX: 801.521.9158

**SMITH'S FOOD AND DRUG STORE #303**  
 560 N STEPHANIE ST  
 HENDERSON, NV

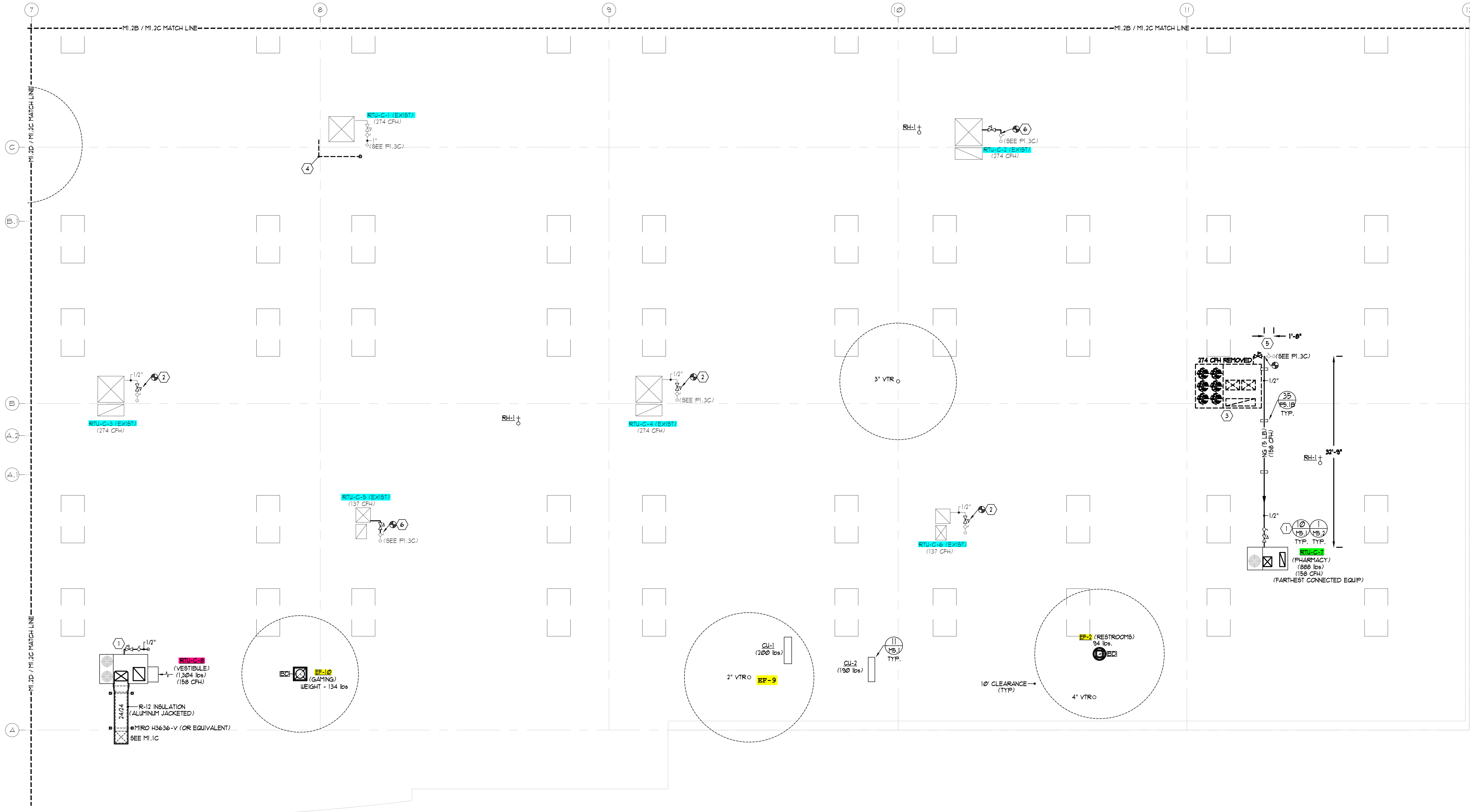
MECHANICAL ROOF PLAN - "D"  
 MECHANICAL ENGINEERS  
 PVE INC. 801.866.3166

DRWN BY: BMS  
 DATE: 11.22.24  
 BID SET

PVE PROJECT NO.: 2400414

SHEET NO.: M1.2D





- M1.2C KEYED NOTES:**
- PROVIDE / INSTALL VALVE, 5 LB PRESSURE REGULATOR, AND ALL FINAL CONNECTIONS TO EQUIPMENT BY OWNER.
  - PROVIDE / INSTALL NEW 5 LB REGULATOR AT EXISTING EQUIPMENT.
  - REMOVE RTU, CAP CURB, RELOCATE RTU TO NEW PICK-UP AREA. SEE M1.2D.
  - REMOVE ABANDONED PIPING AND CAP.
  - REMOVE NATURAL GAS CONNECTIONS TO UNIT BEING REMOVED.
  - CONNECT TO EXISTING NG PIPING. PROVIDE / INSTALL A PRESSURE REGULATOR (5 lb to EQUIP. REQUIREMENTS) AND ALL FINAL CONNECTIONS TO EXISTING RTU.
- GENERAL NOTES:**
- SEE P2.1C FOR RTU CONDENSATE REMOVAL TRAPPED LINES TO BE PROVIDED WITH PROTECTED VENT.
  - GENERAL CONTRACTOR IS RESPONSIBLE FOR THE PATCHING / REPAIRING OF ANY WALLS, FLOORS, CEILINGS, AND ROOFS NEEDED AS A RESULT OF WORK BEING PERFORMED.
  - GENERAL CONTRACTOR SHALL REMOVE ALL UNUSED / ABANDONED ITEMS FROM PROJECT.

**M1.2C MECHANICAL ROOF PLAN - "C"**  
 SCALE: 1/8" = 1' - 0"  
 0' 4' 8' 12' 16'



PRESCOTT MUIR ARCHITECT  
 171 WEST PIERPONT AVE. • SALT LAKE CITY, UTAH 84101  
 TEL: 801.521.9111 FAX: 801.521.9158

MECHANICAL ROOF PLAN - "C"

SMITH'S FOOD AND DRUG STORE #303  
 560 N STEPHANIE ST  
 HENDERSON, NV

MECHANICAL ENGINEERS  
 PVE INC. 801.869.3158

DRAWN BY: BMS  
 DATE: 11.22.24  
 BID SET

PVE PROJECT NO.: 2400414

SHEET NO.: M1.2C