

STIPULATION FOR REUSE  
THIS DRAWING WAS PREPARED FOR THE  
UNITS TO BE SHOWN. ANY REUSE OF  
THIS DRAWING FOR ANY OTHER PROJECT  
WITHOUT THE WRITTEN CONSENT OF  
HARRISON FRENCH & ASSOCIATES, P.L.L.C.  
IS PROHIBITED. ANY REUSE OF THIS  
DRAWING WITHOUT THE WRITTEN CONSENT  
OF HARRISON FRENCH & ASSOCIATES, P.L.L.C.  
IS PROHIBITED. ANY REUSE OF THIS  
DRAWING WITHOUT THE WRITTEN CONSENT  
OF HARRISON FRENCH & ASSOCIATES, P.L.L.C.  
IS PROHIBITED.

**WAWA**  
STORE NUMBER: 7210  
1000 W. WAWA ROAD  
UNION TOWNSHIP, OH 43244  
JOB NUMBER: 42-2345-021

ISSUE BLOCK

4	REV 4	07/02/24
5	REV 5	09/03/24
8	REV 8	03/12/25

CHECKED BY: MJS  
DRAWN BY: SGB  
DOCUMENT DATE: 03/12/25  
PROTO: U59FB-L  
CYCLE: 2023.Q3.G5  
PLAN ISSUE: CNST SET

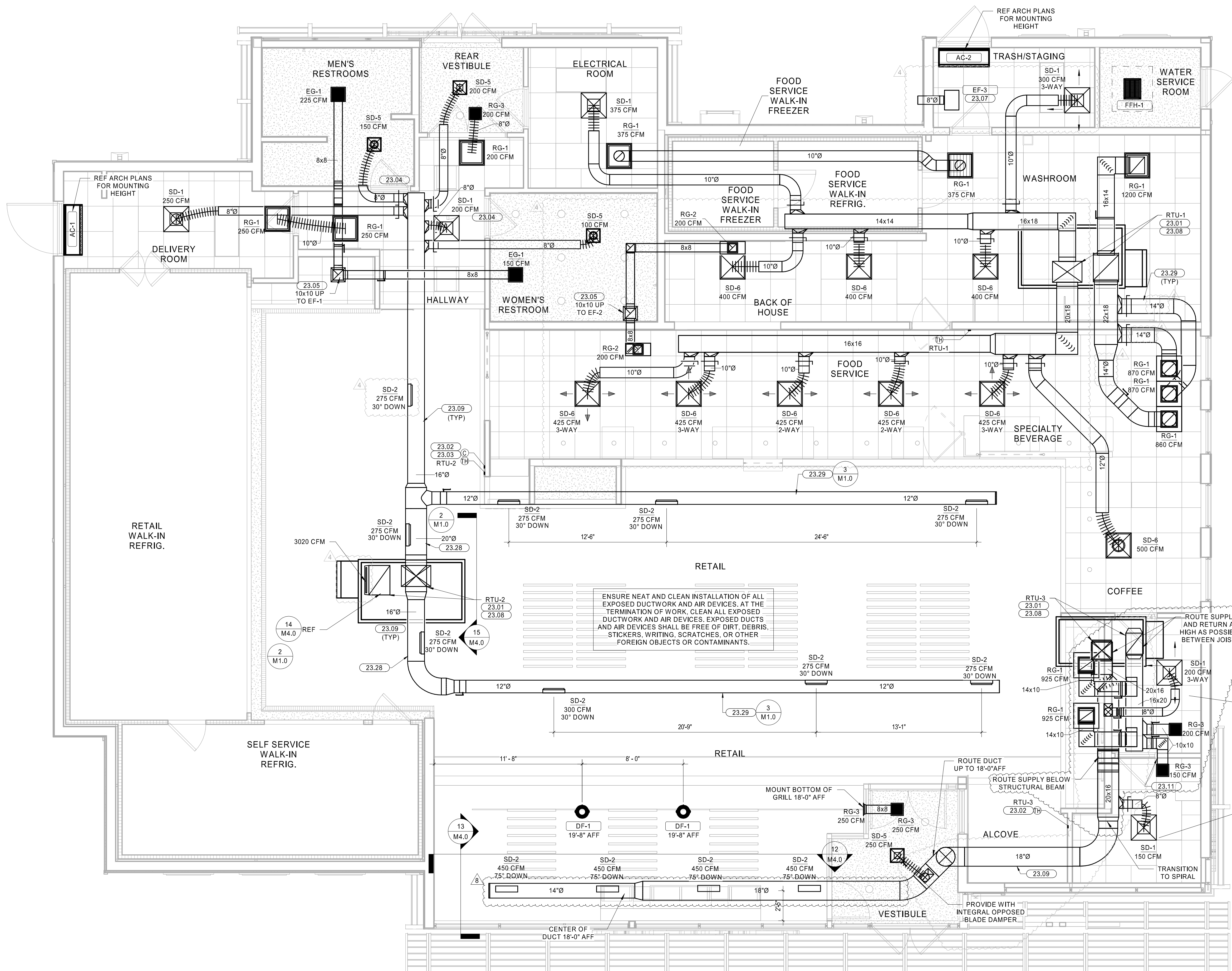
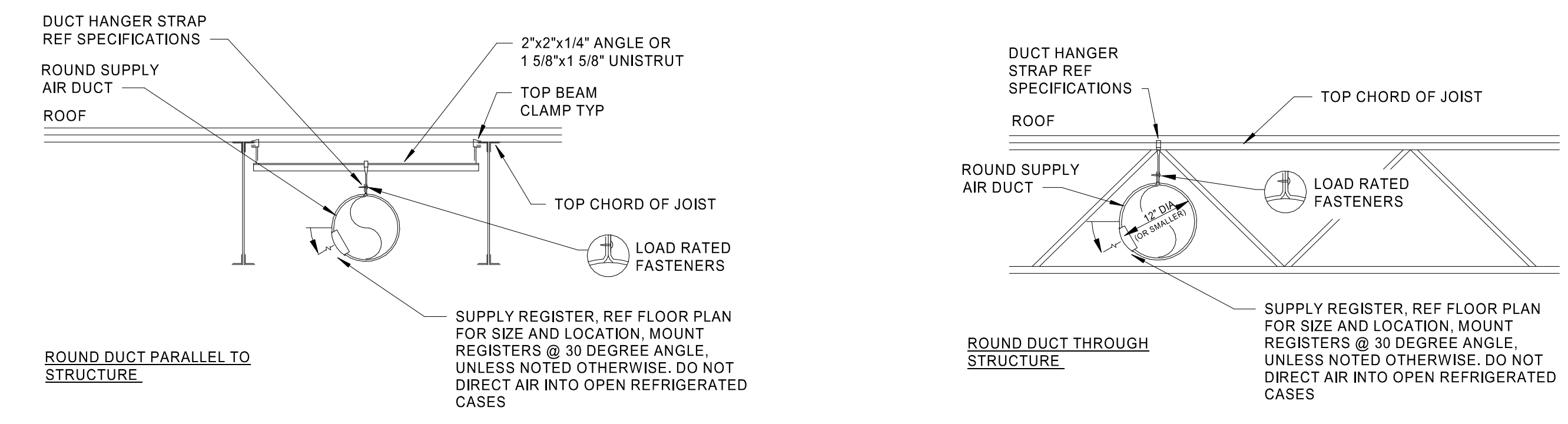
RYAN R. VAUGHN  
E-78195  
REGISTERED PROFESSIONAL ENGINEER  
STATE OF OHIO  
Ryan Roger Vaughn  
Professional Engineer  
No. 78195  
Mechanical  
Exp. 03/12/25

HVAC FLOOR PLAN

SHEET: M1.0

**KEYNOTES**

- # NOTE
- SUPPLY AND RETURN DUCT UP TO RTU ON ROOF. TRANSITION AS REQUIRED. FIELD VERIFY DUCT ROUTING PRIOR TO FABRICATION. PROVIDE FLEX CONNECTION FOR VIBRATION ISOLATION.
  - MOUNT REMOTE TEMPERATURE/HUMIDITY SENSOR IN AREA SHOWN AT 54" AFF. COORDINATE EXACT LOCATION WITH TENANT CONSTRUCTION MANAGER. THE ENTIRE CONTROL SYSTEM SHALL BE PROVIDED COMPLETE IN EVERY RESPECT BY THE MECHANICAL CONTRACTOR.
  - WALL MOUNTED CO2 SENSOR TO RTU-2. SENSOR TO MONITOR CO2 LEVELS THROUGH REMOTE BAS. SENSOR BY WAWA BAS VENDOR.
  - UNDERCUT DOOR 1" FOR AIR PASSAGE.
  - EXHAUST DUCT ROUTED TO FAN ON ROOF. COORDINATE ROUTING OF DUCT WITH ALL DISCIPLINES. PROVIDE TRANSITIONS AND FITTINGS AS REQUIRED.
  - EXHAUST DUCT SHALL BE GALVANIZED STEEL. PROVIDE SIDEWALL VENT WITH SCREEN AND FLAPPER DAMPER. CROWN MODEL 349 OR EQUAL. EXHAUST FAN SHALL MAINTAIN 1' CLEARANCE FOR ANY OUTSIDE AIR INTAKE. MUST MEET LOCAL CODE REQUIREMENTS. FIELD VERIFY ALL ROUTING AND REQUIREMENTS PRIOR TO BID. SEAL ALL PENETRATION WEATHER TIGHT. PRE-PAINT VENT COVER TO MATCH SIDING.
  - HVAC UNIT MANUFACTURER TO PROVIDE 120V SMOKE DETECTORS FOR SUPPLY AND RETURN WITH AUXILIARY CONTACTS AS SHOWN. UPON ACTIVATION, THE SMOKE DETECTORS SHALL SHUT DOWN THE AIR DISTRIBUTION SYSTEM TO WHICH IT IS CONNECTED AND ACTIVATE A VISIBLE AND AUDIBLE SUPERVISORY SIGNAL AT A CONSTANTLY ATTENDED LOCATION VIA THE SPRINKLER FIRE ALARM PANEL. SMOKE DETECTORS SHALL ALSO BE FURNISHED WITH WALL MOUNTED REMOTE TEST STATION WITH KEYS RESET. REMOTE SD TEST SUPERVISORY SIGNAL SHALL BE LED TYPE WITH ALDIBLE BEEPERS ALERT.
  - PROVIDE MCGILL AIRFLOW'S DOUBLE-WALL INSULATED SPIRAL DUCT OR EQUAL (MCGILL 614/829-1200). REFERENCE DRAWINGS FOR MOUNTING HEIGHT. PROVIDE DUCT AND FITTINGS WITH SLIP JOINT CONNECTION TYPE. FLANGE-TO-FLANGE CONNECTION TYPES ARE NOT ALLOWED.
  - PROVIDE REMOTE TEST STATION FOR SMOKE DETECTORS WITH AUDIBLE AND VISUAL ALARM WITH KEYS RESET. MOUNT TEST STATION 48 INCHES AFF. MOUNT ALDIBLE AND VISUAL ALARM IN CONSTANTLY ATTENDED LOCATION. CONSTANTLY ATTENDED LOCATION IS NOT REQUIRED WHERE DUCT SMOKE DETECTOR ACTIVATES THE BUILDING'S ALARM SYSTEM.
  - ROUTE DUCTWORK AS HIGH AS POSSIBLE PARALLEL TO STRUCTURE. REF 2-M1.0 TYP.
  - ROUTE DUCTWORK WITHIN THE JOIST SPACE. COORDINATE THRU WEBBING. REF 3-M1.0 TYP.



**HVAC LEGEND**

SYMBOL	DESCRIPTION
10x8 8'	NEW RECTANGULAR OR ROUND DUCT
12"	FLEXIBLE DUCT
Supply Air Ductwork Up Through Plan	SUPPLY AIR DUCTWORK UP THROUGH PLAN
Return Air Ductwork Up Through Plan	RETURN AIR DUCTWORK UP THROUGH PLAN
Exhaust Air Ductwork Up Through Plan	EXHAUST AIR DUCTWORK UP THROUGH PLAN
90° Elbow with Turning Vanes	90° ELBOW WITH TURNING VANES
Manual Air Volume Control Damper	MANUAL AIR VOLUME CONTROL DAMPER
4 Way Supply Diffuser	4 WAY SUPPLY DIFFUSER
3 Way Supply Diffuser	3 WAY SUPPLY DIFFUSER
2 Way Opposed Supply Diffuser	2 WAY OPPOSED SUPPLY DIFFUSER
2 Way Corner Supply Diffuser	2 WAY CORNER SUPPLY DIFFUSER
Return Air Device	RETURN AIR DEVICE
Exhaust Air Device	EXHAUST AIR DEVICE
AC-X	AIR CURTAIN
Linear Slot Diffuser with Plenum	LINEAR SLOT DIFFUSER WITH PLENUM
Combination Temperature/Humidity Sensor	COMBINATION TEMPERATURE/HUMIDITY SENSOR
Temperature Sensor	TEMPERATURE SENSOR
CO2 Sensor	CO2 SENSOR
Type Mark	TYPE MARK
XXX CFM	CFM
RTU-10	MECHANICAL EQUIPMENT TAG
Condensate Piping	CONDENSATE PIPING
EF-X	ROOF MOUNTED EXHAUST FAN
EF-X	INLINE EXHAUST FAN
RTU-X	PACKAGED ROOFTOP AIR CONDITIONER

**1 HVAC FLOOR PLAN**  
1/4" = 1'-0"

2/23/2025, 10:52 AM  
 C:\Users\mvaughn\OneDrive\Documents\2025\Rev\7210\WAWA\7210-021\HVAC\_FLOOR\_PLAN.MXD  
 M1.0-HVAC FLOOR PLAN.RVT



PACKAGED ROOFTOP UNIT SCHEDULE																									
MARK	AREA SERVED	BASIS OF DESIGN				FAN				DIRECT EXPANSION COOLING				GAS HEATING				ELECTRICAL DATA				WEIGHT (LBS)	NOTES		
		MANUFACTURER	MODEL	NOMINAL CAPACITY (TONS)	SUPPLY AIRFLOW (CFM)	OUTSIDE AIRFLOW (CFM)	EXT. SP (IN.-WG)	NOM. MOTOR HP	ENTERING AIR DB (°F)	WB (°F)	LEAVING AIR DB (°F)	WB (°F)	TOT. CAPACITY (Btu/h)	SENS. CAPACITY (Btu/h)	EER	ENT. AIR DB (°F)	LVG. AIR DB (°F)	INPUT (Btu/h)	OUTPUT (Btu/h)	VOLTS	PHASE			MCA (AMPS)	MCCP (AMPS)
RTU-1	BACK OF HOUSE	LENNOX	LCT1604HE	12.5	4500	700	0.70	3.75	80.0	67.0	58.2	56.4	136000	91900	11	0.0	0.0	0	0	208	3	53	80	1644	1.3,14
RTU-2	SALES	LENNOX	LGT1024HE	8.5	3400	380	1.00	3.75	80.0	67.0	58.4	57.2	102000	71000	12.1	62.0	90.3	130000	104000	208	3	46	50	1495	1.4
RTU-3	FRONT OF HOUSE	LENNOX	LGT0724HE	6.0	2400	200	0.50	1.5	80.0	67.0	57.0	56.8	72000	53100	12.2	62.0	95.2	108000	87000	208	3	32	45	865	1.3,14

- NOTES:**
- FURNISHED BY WAWA, INSTALLED BY GC.
  - PROVIDE CO2 SENSOR FOR RTU2 ONLY. SENSOR TO BE INTERLOCKED WITH BAS.
  - PROVIDE HUMIDITROL HOT GAS REHEAT.
  - PROVIDE REMOTE WALL MOUNTED COMBINATION TEMPERATURE/HUMIDITY SENSOR.
  - PROVIDE WITH 2" FACTORY PLEATED MERV 8 FILTERS.
  - PROVIDE WITH 18" ROOF CURB.
  - PROVIDE WITH FACTORY INSTALLED HACR CIRCUIT BREAKERS AND DISCONNECT.
  - PROVIDE WITH FACTORY INSTALLED 15A GFCI SERVICE OUTLET, EC TO PROVIDE FIELD WIRING.
  - PROVIDE WITH FACTORY INSTALLED DISCONNECT.
  - PROVIDE WITH FACTORY INSTALLED SINGLE ENTHALPY CONTROLLED ECONOMIZER AND UNIT POWERED EXHAUST FAN.
  - PROVIDE WITH FACTORY INSTALLED DIRTY FILTER SWITCH.
  - PROVIDE WITH FACTORY INSTALLED DRAIN PAN OVERFLOW SWITCH.
  - PROVIDE WITH FACTORY INSTALLED SUPPLY AND RETURN SMOKE DETECTORS.
  - PROVIDE WITH BAS MONITORING POINT OF THE OUTSIDE AIR DAMPER POSITION.

### AIR CURTAIN SCHEDULE

MARK	MANUFACTURER	MODEL	AREA SERVED	FAN MOTORS	HP	PH	FLA	HEAT INPUT (KW)	WEIGHT (LB)	NOTES
AC-1	POWERED AIRE	BCE-148	DELIVERY ROOM	0.5 hp	120	1	7.3	0	99	1.2,3,4
AC-2	POWERED AIRE	BCE-148	TRASH STAGING	0.5 hp	120	1	7.3	0	99	1.2,3,4

**NOTES:**

- PROVIDED BY GC.
- MOUNT INSIDE BUILDING ABOVE DOOR.
- PROVIDE ALL NECESSARY MOUNTING BRACKETS AND ACCESSORIES.
- PROVIDE WITH MODEL SM-300 COMMERCIAL MAGNETIC REED DOOR SWITCH. ENERGIZE EXHAUST FAN ON WHEN DOOR IS OPEN.

### EXHAUST FAN SCHEDULE

MARK	AREA SERVED	MANUFACTURER	MODEL	DESIGN AIRFLOW (CFM)	EXT. S.P. (IN.-WG)	VOLTS	PHASE	HP	WEIGHT	NOTES
EF-1	RESTROOMS	GREENHECK	GB-098-6	375	0.38	120	1	0.167	59	1.2,3,4,5
EF-2	BACK OF HOUSE	GREENHECK	GB-098-6	400	0.38	120	1	0.167	59	1.2,3,4,5
EF-3	TRASH ROOM	GREENHECK	SP-B200	200	0.50	120	1	0.167	14	1,2,4,5

**NOTES:**

- NO SUBSTITUTIONS PERMITTED - PROVIDED BY GC.
- PROVIDE FACTORY MOUNTED DISCONNECT.
- PROVIDE 18" HIGH PREFABRICATED INSULATED ROOF CURB AND BIRD SCREEN.
- MECHANICAL CONTRACTOR TO PROVIDE EXHAUST FAN & WIRED SPEED CONTROLLER.
- WIRE FOR CONTINUOUS OPERATION.

### AIR DEVICE SCHEDULE

TYPE	SERVICE	MFG	MODEL	STYLE	MOUNTING	FACE SIZE	NOTES
EG-1	EXHAUST	PRICE	630FF	LOUVERED GRILLE	SURFACE	12x12	4
RG-1	RETURN	PRICE	630FF	LOUVERED GRILLE	LAY-IN	24x24	4
RG-2	RETURN	PRICE	630FF	LOUVERED GRILLE	LAY-IN	24x12	4
RG-3	RETURN	PRICE	630FF	LOUVERED GRILLE	REF. PLANS	12x12	4
SD-1	SUPPLY	PRICE	AMD	MODULAR LOUVERED FACE DIFFUSER	LAY-IN	24x24	1,6
SD-2	SUPPLY	PRICE	SDGE	SPIRAL DUCT MOUNTED GRILLE	DUCT	20x4	7,8
SD-5	SUPPLY	PRICE	AMD	MODULAR LOUVERED FACE DIFFUSER	SURFACE	12x12	5,6
SD-8	SUPPLY	PRICE	AMD	MODULAR LOUVERED FACE DIFFUSER	LAY-IN	24x24	1,6,10

**NOTES:**

- PROVIDED BY GC. NO SUBSTITUTIONS PERMITTED.
- FOR LAY-IN CEILINGS PROVIDE WITH 18"x18" FULL FACE APPEARANCE DIFFUSER NECK. PROVIDE WITH FACTORY SQUARE TO ROUND NECK ADAPTER MODEL "SR". ROUND NECK SIZE SHALL BE EQUAL TO FLEX SIZE SERVING DIFFUSER.
- NOT USED.
- NOT USED.
- HINGE PREFERRED - "OR" STYLE (1/4 TURN FASTENERS) NOT ACCEPTABLE. FILTER TYPE RETURN GRILLES PROVIDED SOLELY FOR MAINTENANCE PURPOSES. OMIT FILTER UPON INSTALLATION.
- PROVIDE WITH TYPE 6 BEVELED SURFACE MOUNT FRAME AND FACTORY SQUARE TO ROUND NECK ADAPTER MODEL "SR".
- PROVIDE WITH BACKPAN INSTALLATION.
- PROVIDE WITH DOUBLE DEFLECTION TURNING VANES.
- PROVIDE WITH INTEGRAL OPPOSED BLADE DAMPER.
- NOT USED.
- PROVIDE WITH ADJUSTABLE PATTERN DEFLECTOR. PROVIDE WITH 12"x12" DIFFUSER NECK. PROVIDE WITH FACTORY SQUARE TO ROUND NECK ADAPTER MODEL "SR". ROUND NECK SIZE SHALL BE EQUAL TO FLEX SIZE SERVING DIFFUSER.

### DESTRATIFICATION FAN SCHEDULE

MARK	MANUFACTURER	MODEL	AREA SERVED	VOLTS (V)	PHASE	FLA (A)	WEIGHT (LBS)	NOTES
DF-1	AIRIUS	A-10-SP-SH-120-X	RETAIL	120		0.14	7	1,2,3,4

**NOTES:**

- PROVIDED BY GC.
- PROVIDE ALL NECESSARY MOUNTING BRACKETS AND ACCESSORIES.
- PROVIDE WALL MOUNTED SPEED CONTROL IN OFFICE. 4 STEP SPEED CONTROL ON/OFF MODEL TRIAC-120-1.5. REFER TO ELECTRICAL PLANS.
- COLOR: WHITE.

### ELECTRICAL UNIT HEATER SCHEDULE

MARK	MANUFACTURER	MODEL	AREA SERVED	ELECTRICAL DATA	HEATING INPUT (KW)	NOTES
FFH-1	QMARK	EFF-1500	WATER SERVICE	FLA 12.5 A V 120 PH 1	1.5	1,2,3,4

**NOTES:**

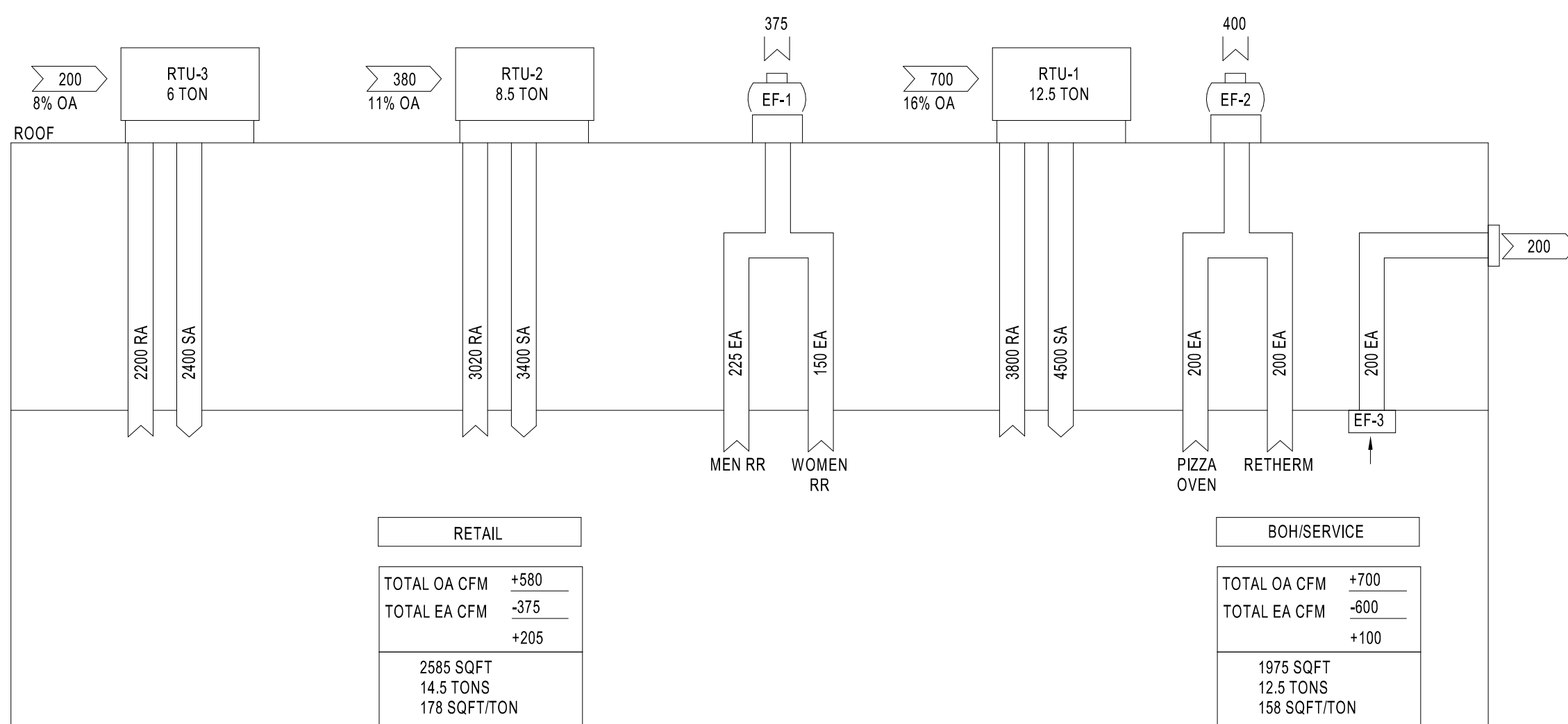
- PROVIDED BY GC.
- COORDINATE MOUNTING FRAME TYPE WITH ARCHITECTURAL DRAWINGS.
- PROVIDE FACTORY ACCESSORIES AS REQUIRED FOR CORRECT CEILING-TYPE INSTALLATION.
- PROVIDE WITH INTERNAL DISCONNECT SWITCH, FACTORY FAN DELAY SWITCH, FACTORY HIGH TEMPERATURE CUTOFF SWITCH, AND INTEGRAL THERMOSTAT.

### CONTROL SEQUENCE OF OPERATIONS: RTU (GAS)

#### RTU SEQUENCE OF OPERATION

- 24 HOUR CYCLE - COOLING**
- SUPPLY AIR FAN SHALL RUN CONTINUOUSLY.
  - OUTSIDE AIR DAMPER SHALL BE IN MINIMUM POSITION.
  - RESTROOM EXHAUST FANS SHALL BE ENERGIZED (24/7).
  - THERMOSTAT SHALL CYCLE COMPRESSOR(S) TO MAINTAIN ROOM SET TEMPERATURE.
- 24 HOUR CYCLE - HEATING**
- SUPPLY AIR FAN SHALL RUN CONTINUOUSLY.
  - OUTSIDE AIR DAMPER SHALL BE IN MINIMUM POSITION.
  - RESTROOM EXHAUST FANS SHALL BE ENERGIZED (24/7).
  - THERMOSTAT SHALL MODULATE GAS HEATER TO ACHIEVE ROOM SET TEMPERATURE.
- 24 HOUR CYCLE - DEHUMIDIFICATION**
- SUPPLY AIR FANS SHALL RUN CONTINUOUSLY.
  - MECHANICAL OUTSIDE AIR DAMPERS SHALL BE IN MINIMUM POSITION.
  - RESTROOM EXHAUST FANS SHALL BE ENERGIZED (24/7).
  - HUMIDISTAT SHALL CYCLE COOLING COIL STAGES TO MAINTAIN SET POINT HUMIDITY (SET AT 50%).
- SMOKE DETECTOR**
- WHEN SMOKE DETECTOR IS ACTIVATED SUPPLY AIR FAN SHALL SHUTDOWN.
  - FIRE ALARM SHALL BE SIGNALLED.
  - SUPPLY AIR FAN SHALL BE MANUALLY RESET. KEYPAD SET IN MANAGER'S OFFICE.

### AIR BALANCE SCHEMATIC NTS



### VENTILATION SCHEDULE

NAME	OCCUPANCY CATEGORY	AREA (SF)	SF PER PERSON	# OF PEOPLE	OA PER AREA (CFM/SF)	OA PER PERSON (CFM/PERSON)	Outdoor Airflow	ZONE EFF. (E_z)	TOTAL OA (CFM)
VESTIBULE	Corridor/Transition	92	0 SF	0.0	0.06	0.0	6 CFM	0.8	7
RETAIL	Merchandising Sales Area - Retail	2140	72 SF	29.8	0.12	7.5	480 CFM	0.8	600
TRASH-STAGING	Active Storage	80	359 SF	0.2	0.12	0.0	10 CFM	0.8	12
WOMEN'S RESTROOM	Restrooms	134	108 SF	1.2	0.00	0.0	0 CFM	0.8	0
FOOD PREPARATION	Food Preparation	387	54 SF	7.2	0.18	7.5	124 CFM	0.8	154
ELECTRICAL ROOM	Equipment Room	114	0 SF	0.0	0.00	0.0	0 CFM	0.8	0
MEN'S RESTROOM	Restrooms	127	108 SF	1.2	0.00	0.0	0 CFM	0.8	0
REAR VESTIBULE	Corridor/Transition	55	0 SF	0.0	0.06	0.0	3 CFM	0.8	4
DELIVERY ROOM	Active Storage	136	359 SF	0.4	0.12	0.0	16 CFM	0.8	20
SPECIALTY BEVERAGE	Food Preparation	209	54 SF	3.9	0.18	7.5	67 CFM	0.8	83
COFFEE	Food Preparation	112	54 SF	2.1	0.18	7.5	35 CFM	0.8	45
HALLWAY	Corridor/Transition	135	0 SF	0.0	0.06	0.0	8 CFM	0.8	10
WATER SERVICE ROOM	Equipment Room	50	0 SF	0.0	0.00	0.0	0 CFM	0.8	0
BACK OF HOUSE	Food Preparation	136	54 SF	2.5	0.18	7.5	43 CFM	0.8	54
WASHROOM	Food Preparation	324	54 SF	6.0	0.18	7.5	104 CFM	0.8	129
ASSOCIATE AREA	Office - Enclosed	75	215 SF	0.4	0.06	5.0	6 CFM	0.8	8
OFFICE	Office - Enclosed	87	215 SF	0.4	0.06	5.0	7 CFM	0.8	9
ALCOVE	Merchandising Sales Area - Retail	59	72 SF	0.8	0.12	7.5	13 CFM	0.8	16
SELF-SERVICE BEVERAGE	Personal Services Sales Area - Retail	68	72 SF	1.0	0.12	7.5	15 CFM	0.8	19

TOTAL = 1173 CFM  
Ez = 0.8 (WARM AIR CEILING SUPPLY & CEILING RETURN)  
TOTAL OSA PROVIDED 1,280 CFM > TOTAL REQUIRED OSA 1,173 CFM

### AIR BALANCE

MARK	OUTSIDE AIRFLOW (CFM)	EXHAUST AIRFLOW (CFM)	TOTAL AIRFLOW
EF-1	700	375	-375 CFM
EF-2	380	400	-400 CFM
EF-3	200	200	-200 CFM
RTU-1	700		700 CFM
RTU-2	380		380 CFM
RTU-3	200		200 CFM
TOTAL POSITIVE =			305 CFM

### HVAC GENERAL NOTES:

- REFER TO WRITTEN BOOK SPECIFICATIONS FOR ADDITIONAL INFORMATION.
- THE WORK TO BE DONE UNDER THESE SPECIFICATIONS AND THE DRAWINGS CONSISTS OF FURNISHING ALL EQUIPMENT, MATERIALS, LABOR AND SERVICES, AND PERFORMING ALL OPERATIONS TO COMPLETE THE MECHANICAL CONSTRUCTION WORK FOR THIS PROJECT. ANY WORK NOT SPECIFICALLY COVERED BY THESE SPECIFICATIONS OR INDICATED ON THE MECHANICAL/ELECTRICAL/PLUMBING PLANS, BUT NECESSARY TO COMPLETE OR PERFECT ANY PART OF THIS INSTALLATION IN A SUBSTANTIAL MANNER, SHALL BE PROVIDED WITHOUT EXTRA COST TO OWNER.
- THE TERM "FURNISH" SHALL MEAN TO OBTAIN AND SUPPLY TO THE JOB SITE. THE TERM "INSTALL" SHALL MEAN TO FIX IN POSITION AND CONNECT FOR USE. THE TERM "PROVIDE" SHALL MEAN TO FURNISH AND INSTALL. THE TERM "MECHANICAL WORK" OR "WORK" SHALL MEAN ALL LABOR, MATERIAL, EQUIPMENT, SCAFFOLDING, RIGGING, TOOLS, SUPERVISION, SERVICES AND OTHER INCIDENTALS NECESSARY FOR COMPLETE AND OPERABLE INSTALLATION.
- THE CONTRACTOR SHALL FURNISH AND INSTALL ALL EQUIPMENT, MATERIALS AND LABOR TO PROVIDE A COMPLETE AND OPERATIONAL SYSTEM AS INDICATED ON THE DESIGN DOCUMENTS.
- CONTRACTOR SHALL PROVIDE ALL ROOFING OPENINGS, FLASHINGS, AUXILIARY STEEL, THREADED RODS, VIBRATION ISOLATORS, TURNBUCKLES, ETC. TO SUPPORT HIS EQUIPMENT ON OR FROM THE STRUCTURE.
- ANY CHANGES AND/OR MODIFICATIONS MUST BE REVIEWED AND APPROVED BY THE ENGINEER OR OWNER'S REPRESENTATIVE PRIOR TO CONSTRUCTION.
- REMOVE ALL TRASH, DEBRIS AND DEMOLITION MATERIAL FROM PREMISES AT THE END OF EACH WORK DAY.
- SCHEDULE ALL WORK, CUTTING AND BUILDING SERVICE INTERRUPTIONS WITH BUILDING OWNER AND CONSTRUCTION MANAGER, PRIOR TO COMPLETING WORK.
- FIELD ADJUST THE DIRECTION OF BLOW FROM ALL SUPPLY AIR DEVICES SO THAT THE DEVICES DO NOT BLOW DIRECTLY INTO SOFFITS, CURTAIN WALLS, REFRIGERATED CASES OR EXHAUST HOODS.
- ALL NEW AND EXISTING PIPES AND DUCTS SHALL HAVE UL FIRE RATED SLEEVES AND/OR FIRE RATED DAMPERS, WHEN PASSING THROUGH FIRE RATED CONSTRUCTION.
- COORDINATE LOCATION OF NEW DUCTWORK, AIR DEVICES AND EQUIPMENT WITH LIGHT FIXTURES, SPRINKLER PIPING AND HYDRONIC PIPING.
- ALL TEMPERATURE AND HUMIDITY SENSORS SHALL BE INSTALLED 5' ABOVE FINISHED FLOOR UNLESS NOTED OTHERWISE ON PLAN. COORDINATE FINAL LOCATIONS WITH EQUIPMENT, FURNITURE, TENANT AND ARCHITECT PRIOR TO INSTALLATION.
- VERIFY ALL EQUIPMENT VOLTAGES, WIRING REQUIREMENTS, AND REQUIRED BREAKER SIZES WITH THE ELECTRICAL CONTRACTOR PRIOR TO ORDERING EQUIPMENT.
- THE MECHANICAL CONTRACTOR SHALL HAVE A QUALIFIED HVAC TECHNICIAN FROM THE UNIT MANUFACTURER PROVIDE AN EQUIPMENT OPERATION CHECK AFTER UNIT START-UP AND PRIOR TO CERTIFIED AIR BALANCING. THE CERTIFICATION, SIGNED BY THE TECHNICIAN, MUST BE INCLUDED IN THE GENERAL CONTRACTOR CLOSING DOCUMENTS FOR THE STORE.
- MECHANICAL PLANS ARE DIAGRAMMATIC IN NATURE, NOT SHOWING EVERY ITEM IN EXACT LOCATION OR DETAIL. MEASUREMENTS AND LOCATIONS MUST BE FIELD VERIFIED AND COORDINATED WITH ARCHITECTURAL, HVAC, FIRE PROTECTION, STRUCTURAL, ELECTRICAL AND OTHER BUILDING DRAWINGS.
- CONTRACTOR TO INCLUDE IN BID ALL COSTS TO MAKE FIELD COORDINATION AND ADJUSTMENT TO DUCTWORK FOR FIT INTO EXISTING STRUCTURE. CONTRACTOR SHALL VERIFY AND FIELD COORDINATE FINAL LOCATION OF MECHANICAL EQUIPMENT.
- CONTRACTOR SHALL SECURE AND PAY FOR ALL REQUIRED PERMITS AND INSPECTIONS AND PERFORM ALL TESTS CALLED FOR OR REQUIRED AS A PART OF HIS WORK. FURNISHED APPROVED CERTIFICATE OF FINAL INSPECTION, AND TURN OVER TO OWNER AT COMPLETION OF PROJECT.
- CONTRACTOR SHALL BE RESPONSIBLE FOR COORDINATION OF ALL TRADES, LANDLORD REQUIREMENTS, CEILING HEIGHTS AND EXISTING STRUCTURAL CONDITIONS PRIOR TO FABRICATION OF ANY DUCTWORK OR ORDERING OF ANY EQUIPMENT.
- ALL INSTALLATION OF THE MECHANICAL EQUIPMENT SHALL COMPLY WITH THE MANUFACTURER'S SPECIFICATION AND CLEARANCE REQUIREMENTS.
- ALL HVAC WORK SHALL BE IN ACCORDANCE WITH NFPA 90A, 90B, 96, 54 AND IFC 101. LIFE SAFETY CODE.
- INSTALLATION SHALL COMPLY WITH ALL LOCAL, STATE AND NATIONAL CODES, AND WITH LATEST ASHRAE PUBLICATIONS. WORK SHALL BE NEAT AND WORKMANSHIP SHALL BE ACCEPTABLE TO BUILDING STANDARDS.
- CONTRACTOR SHALL FURNISH AND INSTALL A COMPLETE TEMPERATURE CONTROL SYSTEM TO INCLUDE: PANELS, MODULES, RELAYS, WIRING, THERMOSTATS, SENSORS, DAMPERS, ACTUATORS AND ALL MISCELLANEOUS ITEMS AS REQUIRED TO FULFILL THE DESIGN INTENT AS INDICATED ON THE PLANS AND IN THE CODED NOTES. THERMOSTATS AND SENSORS SHALL BE LOCATED GENERALLY AS SHOWN BUT THEIR EXACT LOCATION SHALL BE FIELD COORDINATED TO AVOID INTERFERENCE WITH WALL MOUNTED WORK.
- DURING THE BIDDING PERIOD, EACH CONTRACTOR SHALL VISIT THE SITE TO DETERMINE CONDITIONS AFFECTING THE WORK. BIDS SHALL SERVE AS EVIDENCE OF KNOWLEDGE OF EXISTING CONDITIONS AND ANY MODIFICATIONS WHICH ARE REQUIRED TO MEET THE INTENT OF THE DRAWINGS AND SPECIFICATIONS. FAILURE TO VISIT THE SITE DOES NOT RELIEVE THE CONTRACTOR OF RESPONSIBILITY IN PERFORMANCE OF WORK REQUIRED CONDITIONS IN EVIDENCE THEREBY SHALL NOT BE JUSTIFICATION FOR ADDITIONAL COMPENSATION.
- THE EQUIPMENT SHALL BE LOCATED TO ALLOW FOR EASY ACCESS FOR SERVICING, ADJUSTING OR MAINTENANCE AND SPACE FOR REMOVAL OF INTERNAL ASSEMBLIES. PROVIDE MINIMUM CLEARANCES FOR ALL EQUIPMENT PER THE MANUFACTURER'S RECOMMENDATIONS.
- PROVIDE ALL CONTROL EQUIPMENT, MOTOR STARTERS, RELAYS, LINE VOLTAGE CONTROLS, TRANSFORMERS, LOW VOLTAGE CONTROLS, AND DEVICES NECESSARY FOR THE COMPLETE OPERATION OF THE HEATING AND AIR CONDITIONING AND VENTILATING SYSTEM.
- ALL LOW VOLTAGE WIRING AND CONDUIT REQUIRED FOR MECHANICAL EQUIPMENT SHALL BE FURNISHED AND INSTALLED BY MECHANICAL CONTRACTOR.
- PROVIDE ALL FANS AND ROOFTOP UNITS WITH RELAYS TO SHUT DOWN WHEN FIRE ALARM IS INITIATED. COORDINATE LOCATION WITH THE ELECTRICAL CONTRACTOR FOR THE FIRE ALARM WIRING.
- IN THE EVENT OF FAN SHUT DOWN, ALL DUCT MOUNTED DETECTORS SHALL REMAIN IN OPERATION.
- CONTRACTOR TO PROVIDE TENANT WITH AS-BUILT DRAWINGS OF ALL CHANGES OR MODIFICATIONS MADE IN THE FIELD, TO THE ORIGINAL SET OF CONSTRUCTION DOCUMENTS, FOR TURN-OVER TO THE ARCHITECT/ENGINEER UPON COMPLETION OF THE PROJECT. PROVIDE ALL EQUIPMENT SHOP DRAWINGS, INFORMATION ON CONTROL DEVICES, CONTROL WIRING DIAGRAMS AND OTHER PERTINENT INFORMATION AT COMPLETION OF PROJECT.
- IT IS THE CONTRACTOR'S RESPONSIBILITY TO ENSURE THAT THE MECHANICAL EQUIPMENT COMPONENTS ARE INSTALLED AT LOCATIONS AND ELEVATIONS WHICH MAKE THEM READILY ACCESSIBLE FOR ROUTINE MAINTENANCE WITHOUT REQUIRING ANY EXTRAORDINARY MEASURES.
- THE MECHANICAL CONTRACTOR SHALL BE RESPONSIBLE FOR ADMINISTERING ALL WARRANTIES ON EQUIPMENT WHICH HE INSTALLS. THIS INCLUDES ALL CONDENSERS, REFRIGERANT PIPES, AND OTHER ITEMS FURNISHED BY OTHERS AS THOSE FURNISHED BY HIM.
- FIELD VERIFY THE EXACT LOCATION OF ALL EQUIPMENT WITH ARCHITECT/OWNER PRIOR TO INSTALLATION. INFORM OWNER OF ANY EQUIPMENT ITEMS THAT REQUIRE RELOCATION.
- PROVIDE VIBRATION ISOLATION DEVICES AND FLEXIBLE CONNECTIONS TO ALL MOVING MACHINERY.
- DUCT DIMENSIONS SHOWN ARE INSIDE NET DIMENSIONS. ADD TO SHEET METAL SIZE FOR INSULATION THICKNESS. HOLD DUCTWORK TIGHT TO UNDERLIES OF STRUCTURE UNLESS OTHERWISE NOTED OR REQUIRED BY FIELD CONDITIONS. IT IS REQUIRED TO COORDINATE EXACT MOUNTING HEIGHT IN FIELD WITH SITE INVESTIGATION. SUPPLY, RETURN, OUTSIDE AIR AND RELIEF AIR DUCTS SHALL BE SHEET METAL AND BE EXTERNALLY INSULATED WITH OWENS CORNING TYPE 150 2" THICK, FOIL FACED FIBROUS GLASS BLANKET INSULATION WITH A MIN R-4 VALUE. EQUAL IS APPROVED. SEAL ALL JOINTS AND SEAMS PRIOR TO ADDING DUCTWRAP. INSULATION WRAP SHALL BE SEALED WITH FAB AND MASTIC MEETING UL 181.
- ALL DUCTWORK SHALL MAINTAIN SYSTEM PRESSURE. THE AIR DISTRIBUTION COMPONENTS SHALL BE SEALED IN ACCORDANCE WITH SMACNA REQUIREMENTS. TWO INCH PRESSURE CLASS.
- DUCT INSULATION CLOSURE SYSTEM SHALL CONSIST OF GLASS FABRIC AND NON MIGRATING MASTIC. SEAL AIR TIGHT.
- ALL FLEXIBLE DUCTS SHALL BE SUPPORTED EVERY 4'-0" WITH 2" WIDE GALVANIZED STEEL BANDS. MINIMUM ONE PER EACH SECTION OF FLEXIBLE DUCT. MAXIMUM LENGTH OF FLEX DUCT SHALL BE 8'-0" LONG AND SHALL MEET INSTALLATION AND MATERIAL REQUIREMENTS OF LOCAL CODES.
- ALL BRANCH TAKE-OFFS SHALL BE PROVIDED WITH MANUAL BALANCING DAMPERS LOCATED ABOVE ACCESSIBLE CEILINGS AS CLOSE TO MAIN TRUNK AS POSSIBLE. WHEN AIR DEVICE IS NOT ACCESSIBLE PROVIDE DAMPER AT DEVICE.
- CONTRACTOR IS RESPONSIBLE FOR COORDINATING BOX-OUT LOCATIONS FOR ALL DRYWALL MOUNTED AIR DEVICES WITH GENERAL CONTRACTOR AND CEILING FRAMING. CONTRACTOR SHALL COORDINATE ALL DUCT AND DIFFUSER LOCATIONS WITH LIGHTING LAYOUTS AS REQUIRED.
- ALL SUPPLY DUCT BENDS FROM THE VERTICAL TO HORIZONTAL AND ANGLED TURNS OF DUCTWORK SHALL HAVE TURNING VANES INSTALLED.
- PROVIDE SMOOTH TRANSITIONS AT EQUIPMENT AND AIR DEVICES TO MATCH CONNECTION SIZES. ALL DUCTWORK SHALL BE SHEET METAL FABRICATED IN ACCORDANCE WITH ASHRAE GUIDE AND SMACNA MANUAL, LATEST EDITIONS.
- WAWA TO PROVIDE TAB VERIFICATION BY WORKING DIRECTLY WITH A TAB CONTRACTOR. GC/MC SHALL BALANCE TO DESIGNED CFM VALUES ON FLOOR PLAN. ANY CORRECTIONS FOUND IN 3RD PARTY TAB REPORT WILL BE THE RESPONSIBILITY OF THE GC TO CORRECT. GC SHALL FORMALLY SUBMIT CORRECTED REPORT TO DESIGN TEAM FOR REVIEW.
- IT SHALL BE THE RESPONSIBILITY OF THIS TAB AGENCY TO PROVIDE THE LOCAL BUILDING DEPARTMENT AND OWNER WITH PROPER TEST & BALANCE DATA ON ABC OR NEBB FORMS.
- BUILDING AIR SYSTEMS SHALL BE BALANCED PER DATA INCLUDED ON THE DRAWINGS TO ACHIEVE RELATIVE AIR VOLUMES AS INDICATED ON THE DRAWINGS AND SCHEDULED HEREIN. REFER TO AIR FLOW DIAGRAM DETAIL.
- ALL NEW EXPOSED SUPPLY AND RETURN DUCTWORK SHALL BE INTERNALLY INSULATED SPIRAL DOUBLE-WALL STEEL WITH MAXIMUM THERMAL CONDUCTANCE OF 0.27 BTU/HR/FT<sup>2</sup>/F. DUCT FITTINGS TO BE SLIP JOINT CONNECTION TYPE. FLANGE-TO-FLANGE CONNECTION TYPES ARE NOT ALLOWED. EXPOSED DUCTWORK TO BE PAINTED. REFER TO ARCHITECTURAL PLANS.
- PROVIDE VOLUME BALANCING DAMPER AT ALL NINETY-DEGREE DUCT TAKE-OFFS. THIS ALSO APPLIES TO TAKE-OFFS TO DIFFUSERS OR REGISTERS LOCATED DIRECTLY UNDER DUCTS.
- ALL RESTROOM MAKE-UP AIR SHALL BE GALVANIZED STEEL TRANSFER DUCTS WITH ZERO LEAKAGE BACKDRAFT DAMPERS AND DOOR UNDERCUTS.
- MECHANICAL CONTRACTOR TO FIELD VERIFY WITH STRUCTURE ALL DUCT ROUTING PRIOR TO FABRICATION.
- PROVIDE ACCESS TO ALL COMPONENTS REQUIRING PERIODIC INSPECTION AND SERVICE THAT ARE LOCATED WITHIN THE SPACE OR REQUIRE ACCESS THROUGH THE SPACE. LABEL ACCESS DOORS AND PANELS OR CEILING TILES UTILIZED FOR ACCESS WITH THE NAME OF THE HIDDEN COMPONENT(S), DEMONSTRATE ACCESS TO ALL HIDDEN COMPONENTS FOR THE FIELD REPRESENTATIVE PRIOR TO OCCUPANCY.
- ALL ROOF TOP UNITS AND ROOF TOP EXHAUST FANS SHALL BE LABELED TO INDICATE MARK NUMBERS, PANEL OF CIRCUIT ORIGIN, AND CIRCUIT NUMBER. LABELS SHALL BE SUNLIGHT RESISTANT AND SHALL BE IN PLACE PRIOR TO INSPECTION.
- PROVIDE ALL NECESSARY TRANSITIONS AND OFFSETS IN SUPPLY AND RETURN AIR DUCTWORK TO AVOID STRUCTURE, WATER, GAS, SPRINKLER PIPING, OTHER DUCTWORK, OTHER TRADES, ETC. DUCTWORK SHALL BE INSTALLED AS HIGH AS CONDITIONS WILL ALLOW.
- ENSURE NEAT AND CLEAN INSTALLATION OF ALL EXPOSED DUCTWORK AND AIR DEVICES. AT THE TERMINATION OF WORK, CLEAN ALL EXPOSED DUCTWORK AND AIR DEVICES. EXPOSED DUCTS AND AIR DEVICES SHALL BE FREE OF DIRT, DEBRIS, STICKERS, WRITING, SCRATCHES, OR OTHER FOREIGN OBJECTS OR CONTAMINANTS.

**HFA**  
HARRISON FRENCH & ASSOCIATES, P.L.L.C.  
1479.273.7780  
1705 S. Walton Blvd., Suite 3  
Bentonville, Arkansas 72712  
www.hfa.com

STIPULATION FOR REUSE  
THE DRAWINGS ARE PREPARED FOR THE EXCLUSIVE USE OF THE PROJECT AND ARE NOT TO BE REPRODUCED OR TRANSMITTED IN ANY FORM OR BY ANY MEANS, ELECTRONIC OR MECHANICAL, INCLUDING PHOTOCOPYING, RECORDING, OR BY ANY INFORMATION STORAGE AND RETRIEVAL SYSTEM, WITHOUT THE WRITTEN PERMISSION OF THE ARCHITECT. ANY REUSE OF THESE DRAWINGS FOR ANY OTHER PROJECT WITHOUT THE WRITTEN PERMISSION OF THE ARCHITECT IS STRICTLY PROHIBITED.

WAWA  
STORE NUMBER: 7210  
UNION TOWNSHIP, OH 4244  
JOB NUMBER: 42-234-0021

REV	DATE	DESCRIPTION
4	07/02/24	REV 4
5	09/03/24	REV 5
8	03/12/25	REV 8

CHECKED BY: MJS  
DRAWN BY: SGB  
DOCUMENT DATE: 03/12/25  
PROTO: U59FB-L  
CYCLE: 2023.03.05  
PLAN ISSUE: CNST SET

RYAN R. VAUGHN  
E-78195  
REGISTERED PROFESSIONAL ENGINEER  
STATE OF OHIO

HVAC NOTES AND SCHEDULES

SHEET: M3.0

