

**Report By:**

National TAB  
1329 E. KEMPER ROAD  
SUITE 4210  
CINCINNATI, OH 45246



**Report: TAB Report**  
**Function: Test, Adjust, & Balance**  
**Date: 10/06/2025**  
**Completed By: National TAB**

# PROJECT

**11-03-25 WAWA #7210 EASTGATE, OH**

4536 MOUNT CARMEL TABASCO ROAD

UNION TOWNSHIP , OH 45244

**Client**

Wawa  
260 West Baltimore Pike

Wawa, PA 19063

# National TAB

Project: 11-03-25 WAWA #7210 EASTGATE, OH

## Table Of Contents

| Section        | Page # |
|----------------|--------|
| File Data      | 3      |
| Issue Data     | 4      |
| File Data      | 8      |
| Checklist Data | 9      |
| AHU/RTU        | 19     |
| FAN - Exhaust  | 25     |

## Project Summary

The summary below provides a quick understanding of our scope of work and general testing procedures. Enclosed in the report is further detail about your building performance including recommendations, asset data, and pictures. Our focus is to work with the trades to remedy any issues or deficiencies during the actual field balancing and not after the balancing has occurred to achieve a positive environment and outcome. The level of success is determined by the availability of the trades, possible parts needed, or time constraints.

### RTU's (Roof Top Units) w/ Diffusers

Each of the RTU's were measured at their terminal devices or via traverse to establish a total flow for that unit. Each RTU was adjusted to within tolerance of the engineer's design flow. Each outlet was then adjusted to within tolerance of the design flow. Outside air was measured by reading the intake air opening with a velocity grid and multiplying by the free area. The outside air damper was adjusted until the airflow was within the design requirements. Any equipment that fell outside of that tolerance is noted throughout the report.

### General Exhaust Fans w/ Grilles

The general exhaust fans were measured by reading each air device with a flow hood. The total airflow for each fan is equivalent to the sum of these readings. Fan speed was then adjusted so that the airflow was within tolerance of design. Each terminal device was balanced to within tolerance of the design volume using the installed volume dampers. Any equipment that fell outside of this tolerance is noted throughout the report.

### Ceiling Exhaust Fans

The ceiling exhaust fans were measured using a flow hood. If speed adjustment was provided, the fan speed was adjusted to within design tolerance. Any equipment that fell outside of this tolerance is noted throughout the report.

### Final Building Tests

After completing the test and balance the final building pressure was measured. It was confirmed that the building pressure fell within acceptable tolerances and that the pressure measurement coincides with the actual and design net airflow. Any deviations from these standards are noted throughout the report.

## Issue List

- Ductwork not far enough away from drop
- Returns not meeting design
- Sensor wiring not correct





**11-03-25 WAWA #7210 EASTGATE, OH**

**Project Issue Information**

**Issue Name :** Returns not meeting design  
**Description :** The returns for RTU-1 are not meeting design airflow with supply air and outside air set. Dampers are open and left that way to keep static pressure closer to design.  
**Created By :** National TAB                      **Assigned To :** National TAB - Will Turnbough  
**Status :** Open  
**Priority :** Low                                      **Asset Tag :**  
**Originated Date :** 11/12/2025 - Corey Dick - National TAB



11-03-25 WAWA #7210 EASTGATE, OH

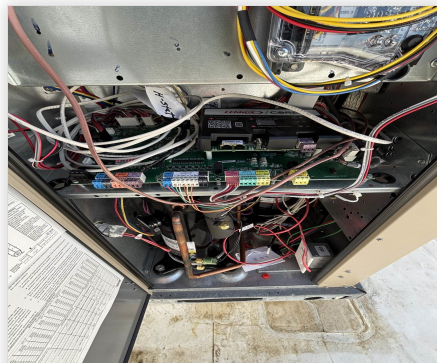
**Project Issue Information**

**Issue Name :** Sensor wiring not correct  
**Description :** The sensor wiring is not correct and is preventing the unit from getting proper info regarding space temp and relative humidity. This is also causing the units to display a low-level alarm about the sensor.  
**Created By :** National TAB                      **Assigned To :** National TAB - Will Turnbough  
**Status :** Open  
**Priority :** Medium                              **Asset Tag :**  
**Originated Date :** 11/12/2025 - Corey Dick - National TAB

Project Issue File Details



11/12/2025



11/12/2025

**AIR BALANCE SCHEDULE**

| UNIT          | AREA SERVED  | HVAC SUPPLY |        | HVAC RETURN |        | HVAC OUTDOOR |        | OA %   |        | HOOD MAKE-UP |        | HOOD EXHAUST |        | GENERAL EXH. |        |
|---------------|--------------|-------------|--------|-------------|--------|--------------|--------|--------|--------|--------------|--------|--------------|--------|--------------|--------|
|               |              | DESIGN      | ACTUAL | DESIGN      | ACTUAL | DESIGN       | ACTUAL | DESIGN | ACTUAL | DESIGN       | ACTUAL | DESIGN       | ACTUAL | DESIGN       | ACTUAL |
| RTU-1         | FOOD SERVICE | 4500        | 4610   | 3800        | 3850   | 700          | 760    | 15.6%  | 16.5%  |              |        |              |        |              |        |
| RTU-2         | RETAIL       | 3400        | 3336   | 3020        | 2921   | 380          | 415    | 11.2%  | 12.4%  |              |        |              |        |              |        |
| RTU-3         | FOH          | 2400        | 2348   | 2200        | 2128   | 200          | 220    | 8.3%   | 9.4%   |              |        |              |        |              |        |
| EF-1          | RESTROOMS    |             |        |             |        |              |        |        |        |              |        |              |        | 375          | 393    |
| EF-2          | BOH          |             |        |             |        |              |        |        |        |              |        |              |        | 400          | 387    |
| EF-3          | TRASH        |             |        |             |        |              |        |        |        |              |        |              |        | 200          | 219    |
| <b>TOTALS</b> |              | 10300       | 10294  | 9020        | 8899   | 1280         | 1395   |        |        | 0            | 0      | 0            | 0      | 975          | 999    |

**NET BUILDING AIRFLOW CALCULATION**

| TOTALS             | DESIGN     | ACTUAL     |
|--------------------|------------|------------|
| TOTAL OA           | 1280       | 1395       |
| TOTAL EXHAUST      | 975        | 999        |
| <b>NET AIRFLOW</b> | <b>305</b> | <b>396</b> |

| DOOR TESTED    | BUILDING PRESSURE MEASUREMENTS (IN. H2O) |
|----------------|--|
| FRONT          | 0.0059                                   |
| SIDE           | 0.0164                                   |
| REAR           | 0.0098                                   |
| <b>AVERAGE</b> | <b>0.0107</b>                            |

**FINAL CHECKS**

ACTUAL NET AIRFLOW COINCIDES WITH DESIGN: ✓

MEASURED PRESSURES COINCIDES WITH ACTUAL NET AIRFLOW: ✓

PRESSURE FALLS WITHIN IMC TOLERANCE OF +/-0.02" W.C. ✓

NOTES:

## CheckList List

- 01: RTU's/AHU's
- 02: LENNOX SETUP PARAMETERS
- 03: SENSOR WIRING (LENNOX)
- 04: EF'S
- 05: CLOSEOUT CHECKS



11-03-25 WAWA #7210 EASTGATE, OH

**CheckList Information**

**Name :** 01: RTU's/AHU's **Status :** Not Completed  
**Assigned Organization :** National TAB **Asset :**  
**Requesting Organization :** National TAB  
**Created Date :** 09/04/2025 - Natasha Louw - National TAB

**CheckList Item Details**

RTU's/AHU's

All diffusers and grilles are installed and match design? Pass

Comment:

Clean filters installed? Pass

Comment:

Economizers are assembled and functional? Pass

Comment:

Motors are all operating below the FLA rating? Pass

Comment:

Are belts tight? N/A

Comment:

If direct drive unit is the speed controller working? Pass

Comment:

Is gas piping installed and valves turned on? Pass

**Comment:**

**Condensate drains are installed?**

Pass

**Comment:**

**Unit free of noticeable noise and vibration**

Pass

**Comment:**

**Final outside air damper position is marked with permanent marker?**

Pass

**Comment:**

**No alarms present?**

Fail

**Comment:**

**Any noticeable duct leakage?**

Pass

**Comment:**

**Total supply and OA flows are balanced within +/-5% and supply & return diffusers within +/-10%?**

Fail

**Comment:**

**IN TEST MODE, TEST THE FOLLOWING:**

**Cooling mode is operational? Record EAT/LAT for each unit:**

Pass

**Comment:**

RTU-1: EAT() LAT() RTU-2: EAT(67) LAT(43) RTU-3: EAT(66) LAT(45)

**Heating mode is operational? Record EAT/LAT for each unit:**

Pass

**Comment:**

RTU-1: EAT() LAT() RTU-2: EAT(67) LAT(92) RTU-3: EAT(66) LAT(95)

**Dehumidification mode is operational? (Feel dehumidification coil with your hand. Is it hot?) Record EAT/LAT for each unit:**

Pass

**Comment:**

RTU-1: EAT() LAT() RTU-2: EAT(67) LAT(55) RTU-3: EAT(66) LAT(54)



11-03-25 WAWA #7210 EASTGATE, OH

**CheckList Information**

**Name :** 02: LENNOX SETUP PARAMETERS **Status :** Not Completed  
**Assigned Organization :** National TAB **Asset :**  
**Requesting Organization :** National TAB  
**Created Date :** 09/04/2025 - Natasha Louw - National TAB

**CheckList Item Details**

**UNIT ID CONFIGURATIONS**

**BACNET CONFIGURATION: GO TO SETTINGS>GENERAL>CONFIGURATION ID1 POSITION 5 SET TO "N".** Pass

**Comment:**

**NETWORK CONFIGURATION: GO TO SETUP>NETWORK INTEGRATION, SET TO BACNET IP** Pass

**Comment:**

**CONTROL MODE: SET CONTROL MODE TO ROOM SENSOR: CO2, TEMP & HUMIDITY (PER UNIT, AS NEEDED).** Pass

**Comment:**

**INDIVIDUAL PARAMETER CONFIGURATIONS (MECHANICAL CONTRACTOR TO DEFINE / AS APPLICABLE):**

**PARAMETER 105 DEHUMID MODE: 7 NO CONDITIONS** Pass

**Comment:**

**PARAMETER 106 DEHUMID SETPOINT: 50, THIS IS A CENTERED SET POINT (+/-)** Yes

**Comment:**

**PARAMETER 107 DEHUMID DEADBAND: 3 (DEFAULT) THIS IS THE ACTUAL +/- VALUE** Pass

**Comment:**

PARAMETER 117 CO2 DAMPER MAX OPEN: 50%

Pass

Comment:

PARAMETER 118 CO2 START OPEN PPM: 1500

Pass

Comment:

PARAMETER 119 CO2 MAX OPEN PPM: 1500

Pass

Comment:

PARAMETER 137 OCCHET SET POINT: 68 (BACK UP)

Pass

Comment:

PARAMETER 131 SET TO THE SAME % AS THE MINMIUM OA DAMPER SETPOINT

Pass

Comment:

PARAMETER 139 OCC COOLING SET POINT: 72 (BACK UP)

Pass

Comment:

PARAMETER 154 OCC BLOWER MODE: ON-CONTINUOUS 1

Pass

Comment:

CFM VALUES / MSAV FAN SPEEDS (AIR BALANCER TO DEFINE / IF APPLICABLE):

OA DAMPER SET TO SAME POSITION IN ALL FAN SPEEDS?

Pass

Comment:

ALL FAN SPEEDS SET TO THE SAME CFM VALUE (ENTER SETPOINTS BELOW)

Pass

Comment:

RTU-1: 79% RTU-2: 70% RTU-3: 96%

HEAT CFM VALUE: PER THE HVAC SCHEDULE

Pass

Comment:

HIGH COOL CFM VALUE: THE HIGH COOL CFM VALUE

Pass

**Comment:**

---

**LOW COOL CFM VALUE: MATCH THE HIGH COOL CFM VALUE**

Pass

---

**Comment:**

---

**VENTILATION CFM VALUE: MATCH THE HIGH COOL CFM VALUE**

Pass

---

**Comment:**

---



11-03-25 WAWA #7210 EASTGATE, OH

**CheckList Information**

**Name :** 03: SENSOR WIRING (LENNOX) **Status :** Not Completed

**Assigned Organization :** National TAB **Asset :**

**Requesting Organization :** National TAB

**Created Date :** 09/04/2025 - Natasha Louw - National TAB

**CheckList Item Details**

**COMBINATION TEMPERATURE/HUMIDITY SENSOR**

|   |      |
|---|------|
| Sensors are installed where shown on the drawing? | Pass |
|---|------|

**Comment:**

|  |      |
|--|------|
| 2 conductor shielded cable has one wire landed to Vin, one to GND, and the shield wire is not connected. | Fail |
|--|------|

**Comment:**

|   |      |
|---|------|
| For second shielded cable, one wire is landed to Vout and the shield wire is not connected. | Fail |
|---|------|

**Comment:**

|  |      |
|--|------|
| Verify that the CORE or Prodigy controller is sensing a relative humidity (record the reading) | Fail |
|--|------|

**Comment:**



11-03-25 WAWA #7210 EASTGATE, OH

**CheckList Information**

**Name :** 04: EF'S **Status :** Not Completed  
**Assigned Organization :** National TAB **Asset :**  
**Requesting Organization :** National TAB  
**Created Date :** 09/04/2025 - Natasha Louw - National TAB

**CheckList Item Details**

EF's

|                             |      |
|-----------------------------|------|
| <b>Rotation is correct?</b> | Pass |
|-----------------------------|------|

**Comment:**

|   |     |
|---|-----|
| <b>Belts are tight (if applicable)?</b> | N/A |
|---|-----|

**Comment:**

|   |      |
|---|------|
| <b>Speed controller installed and functional (if applicable)?</b> | Pass |
|---|------|

**Comment:**

|  |      |
|--|------|
| <b>There is no major leakage around base of fan?</b> | Pass |
|--|------|

**Comment:**

|   |      |
|---|------|
| <b>Is the motor operating below the motor FLA rating?</b> | Pass |
|---|------|

**Comment:**

|   |      |
|---|------|
| <b>Back draft damper installed and can it fully open?</b> | Pass |
|---|------|

**Comment:**

|   |      |
|---|------|
| <b>Unit free of noticeable noise and vibration?</b> | Pass |
|---|------|

**Comment:**

---

**Total exhaust flow balanced within +/-5% and grilles are within +/-10%?**

Pass

---

**Comment:**

---



11-03-25 WAWA #7210 EASTGATE, OH

**CheckList Information**

**Name :** 05: CLOSEOUT CHECKS **Status :** Not Completed  
**Assigned Organization :** National TAB **Asset :**  
**Requesting Organization :** National TAB  
**Created Date :** 09/04/2025 - Natasha Louw - National TAB

**CheckList Item Details**

**SPACE COMFORT**

|                                   |      |
|-----------------------------------|------|
| <b>Is space free of drafting?</b> | Pass |
|-----------------------------------|------|

**Comment:**

|   |      |
|---|------|
| <b>Is space comfortable in all areas?</b> | Pass |
|---|------|

**Comment:**

|  |      |
|--|------|
| <b>Is the space free of ventilation noise?</b> | Pass |
|--|------|

**Comment:**

**BUILDING PRESSURE**

|  |      |
|--|------|
| <b>Do actual net building airflow, design net building airflow, and pressure coincide? If not why? (All three should either be positive or negative)</b> | Pass |
|--|------|

**Comment:**

# National TAB

Project: 11-03-25 WAWA #7210 EASTGATE, OH

System/Unit: AHU/RTU



Asset: RTU1

AREA:FOOD SERVICE

| Unit Data           |           |            |
|---------------------|-----------|------------|
|                     | Design    | Actual     |
| MFG                 | LENNOX    | LENNOX     |
| Serial Num          | -         |            |
| Model Num           | LCT150H4E | LCT150H4E  |
| Type                | RTU       | RTU        |
| Configuration       | VERTICAL  | VERTICAL   |
| Num OA Filters 1    | -         | 2          |
| OA Filter Size 1    | -         | 14.25"x23" |
| Num Final Filter 1  | -         | 4          |
| Final Filter Size 1 | -         | 20"x25"x2" |

| Motor Data     |        |        |
|----------------|--------|--------|
|                | Design | Actual |
| Phase          | 3      | 3      |
| Rated Voltage  | 208    | 208    |
| Rated Amperage | -      | 8.7    |

| Test Data          |        |                     |
|--------------------|--------|---------------------|
|                    | Design | Actual              |
| SF CFM             | 4500   | 4610                |
| SF RPM             | -      |                     |
| MOTOR RPM          | -      |                     |
| RA CFM             | 3800   | 3842                |
| OA CFM             | 700    | 760                 |
| RL Voltage         | -      | 213/212/213         |
| RL Amperage        | -      | 4.1/4.2/4.1         |
| SF System SetPt    | -      | 79%                 |
| RA Damper Position | -      | 81%                 |
| RA Damper Type     | -      | MECHANICALLY LINKED |
| OA Damper Position | -      | 19%                 |
| OA Damper Type     | -      | PARALLEL BLADE      |

| Performance Data |        |        |
|------------------|--------|--------|
|                  | Design | Actual |
| MA Plenum SP     | -      | -0.53" |
| Fan Suction SP   | -      | -0.86" |
| Fan Discharge SP | -      | 0.55"  |
| Total ESP        | 0.70"  | 1.08"  |
| Fan Total SP     | -      | 1.41"  |

Completed By: Corey Dick on 11/12/2025

## Unit Data - PHOTO LOG



11/06/2025

# National TAB

Project:11-03-25 WAWA #7210 EASTGATE, OH

## AHU/RTU



### Diffuser Supply (GRD)

#### RTU1/FOOD SERVICE

| Asset      |              |      |      |            |    |        |        |           |             |
|------------|--------------|------|------|------------|----|--------|--------|-----------|-------------|
| Asset Name | Location     | Type | Size | DESIGN CFM | AK | CFM(1) | CFM(2) | FINAL CFM | % to design |
| SGRD1      | FOOD SERVICE | SD-6 | 10"  | 425        | 1  | 712    |        | 445       | 104.7       |
| SGRD2      | FOOD SERVICE | SD-6 | 10"  | 425        | 1  | 570    |        | 425       | 100.0       |
| SGRD3      | FOOD SERVICE | SD-6 | 10"  | 425        | 1  | 349    |        | 435       | 102.4       |
| SGRD4      | FOOD SERVICE | SD-6 | 10"  | 425        | 1  | 373    |        | 454       | 106.8       |
| SGRD5      | FOOD SERVICE | SD-6 | 10"  | 425        | 1  | 461    |        | 457       | 107.5       |
| SGRD6      | FOOD SERVICE | SD-6 | 10"  | 400        | 1  | 372    |        | 410       | 102.5       |
| SGRD7      | FOOD SERVICE | SD-6 | 10"  | 400        | 1  | 366    |        | 397       | 99.3        |
| SGRD8      | FOOD SERVICE | SD-6 | 10"  | 400        | 1  | 319    |        | 418       | 104.5       |
| SGRD9      | TRASH        | SD-1 | 10"  | 300        | 1  | 456    |        | 304       | 101.3       |
| SGRD10     | COFFEE       | SD-6 | 12"  | 500        | 1  | 536    |        | 499       | 99.8        |
| SGRD11     | ELECTRICAL   | SD-1 | 10"  | 375        | 1  | 292    |        | 366       | 97.6        |
| Total      |              |      |      | 4500       |    | 4806   | 0      | 4610      | 102.44%     |

### Diffuser Ret/Exh (GRD)

#### RTU1/FOOD SERVICE

| Asset      |              |      |       |            |    |        |        |           |             |
|------------|--------------|------|-------|------------|----|--------|--------|-----------|-------------|
| Asset Name | Location     | Type | Size  | DESIGN CFM | AK | CFM(1) | CFM(2) | FINAL CFM | % to design |
| EGRD1      | FOOD SERVICE | RG-1 | 14"   | 860        | 1  | 791    | 791    | 772       | 89.8        |
| EGRD2      | FOOD SERVICE | RG-1 | 14"   | 870        | 1  | 779    | 779    | 798       | 91.7        |
| EGRD3      | FOOD SERVICE | RG-1 | 14"   | 870        | 1  | 835    | 835    | 833       | 95.7        |
| EGRD4      | WASHROOM     | RG-1 | 16X14 | 1200       | 1  | 876    | 876    | 881       | 73.4        |
| Total      |              |      |       | 3800       |    | 3281   | 3281   | 3284      | 86.42%      |

# National TAB

Project: 11-03-25 WAWA #7210 EASTGATE, OH

System/Unit: AHU/RTU



Asset: RTU2

AREA:RETAIL

| Unit Data           |           |            |
|---------------------|-----------|------------|
|                     | Design    | Actual     |
| MFG                 | LENNOX    | LENNOX     |
| Serial Num          | -         | 5624L02340 |
| Model Num           | LGT102H4E | LGT102H4E  |
| Type                | RTU       | RTU        |
| Configuration       | VERTICAL  | VERTICAL   |
| Num OA Filters 1    | -         | 2          |
| OA Filter Size 1    | -         | 14.25"x23" |
| Num Final Filter 1  | -         | 4          |
| Final Filter Size 1 | -         | 20"x20"x2" |

| Motor Data     |        |        |
|----------------|--------|--------|
|                | Design | Actual |
| Horsepower     | 3.75   | 3.8    |
| Phase          | 3      | 3      |
| Rated Voltage  | 208    | 208    |
| Rated Amperage | -      | 8.7    |

| Test Data          |        |                     |
|--------------------|--------|---------------------|
|                    | Design | Actual              |
| SF CFM             | 3400   | 3336                |
| SF RPM             | -      | -                   |
| MOTOR RPM          | -      | -                   |
| RA CFM             | 3020   | 2921                |
| OA CFM             | 380    | 415                 |
| RL Voltage         | -      | 214/212/213         |
| RL Amperage        | -      | 3.2/3.1/3.2         |
| SF System SetPt    | -      | 70%                 |
| RA Damper Position | -      | 71%                 |
| RA Damper Type     | -      | MECHANICALLY LINKED |
| OA Damper Position | -      | 29%                 |
| OA Damper Type     | -      | ECONOMIZER          |

| Performance Data |        |        |
|------------------|--------|--------|
|                  | Design | Actual |
| MA Plenum SP     | -      | -0.34" |
| Fan Suction SP   | -      | -0.59" |
| Fan Discharge SP | -      | 0.67"  |
| Total ESP        | 1.00"  | 1.01"  |
| Fan Total SP     | -      | 1.26"  |

Completed By: Corey Dick on 11/12/2025

## Unit Data - PHOTO LOG



11/06/2025

# National TAB

Project: 11-03-25 WAWA #7210 EASTGATE, OH

## AHU/RTU



**Diffuser Supply (GRD)**

**RTU2/RETAIL**

| Asset      |                |      |      |            |      |        |        |           |             |
|------------|----------------|------|------|------------|------|--------|--------|-----------|-------------|
| Asset Name | Location       | Type | Size | DESIGN CFM | AK   | CFM(1) | CFM(2) | FINAL CFM | % to design |
| SGRD1      | RETAIL         | SD-2 |      | 275        | 0.26 | 330    | 321    | 276       | 100.4       |
| SGRD2      | RETAIL         | SD-2 |      | 275        | 0.26 | 304    | 294    | 283       | 102.9       |
| SGRD3      | RETAIL         | SD-2 |      | 300        | 0.26 | 333    | 324    | 287       | 95.7        |
| SGRD4      | RETAIL         | SD-2 |      | 275        | 0.26 | 504    | 488    | 302       | 109.8       |
| SGRD5      | RETAIL         | SD-2 |      | 275        | 0.26 | 408    | 395    | 351       | 127.6       |
| SGRD6      | RETAIL         | SD-2 |      | 275        | 0.26 | 140    | 145    | 209       | 76.0        |
| SGRD7      | RETAIL         | SD-2 |      | 275        | 0.26 | 135    | 132    | 218       | 79.3        |
| SGRD8      | RETAIL         | SD-2 |      | 275        | 0.26 | 152    | 164    | 214       | 77.8        |
| SGRD9      | RETAIL         | SD-2 |      | 275        | 0.26 | 413    | 391    | 316       | 114.9       |
| SGRD10     | HALLWAY        | SD-1 | 8"   | 200        | 1    | 120    | 209    | 196       | 98.0        |
| SGRD11     | WOMENS RR      | SD-5 | 8"   | 100        | 1    | 264    | 245    | 110       | 110.0       |
| SGRD12     | REAR VESTIBULE | SD-5 | 8"   | 200        | 1    | 125    | 156    | 181       | 90.5        |
| SGRD13     | MENS RR        | SD-5 | 8"   | 150        | 1    | 231    | 129    | 135       | 90.0        |
| SGRD14     | DELIVERY       | SD-1 | 8"   | 250        | 1    | 234    | 264    | 258       | 103.2       |
| Total      |                |      |      | 3400       |      | 3693   | 3657   | 3336      | 98.12%      |

# National TAB

Project: 11-03-25 WAWA #7210 EASTGATE, OH

System/Unit: AHU/RTU



Asset: RTU3

AREA:FOH

| Unit Data           |           |            |
|---------------------|-----------|------------|
|                     | Design    | Actual     |
| MFG                 | LENNOX    | LENNOX     |
| Serial Num          | -         | 5624M01118 |
| Model Num           | LGT072H4E | LGT072H4E  |
| Type                | RTU       | RTU        |
| Configuration       | VERTICAL  | VERTICAL   |
| Num OA Filters 1    | -         | 2          |
| OA Filter Size 1    | -         | 14"x14"    |
| Num Final Filter 1  | -         | 4          |
| Final Filter Size 1 | -         | 20"x20"x2" |

| Motor Data     |        |        |
|----------------|--------|--------|
|                | Design | Actual |
| Horsepower     | 1.5    | 1.5    |
| Phase          | 3      | 3      |
| Rated Voltage  | 208    | 208    |
| Rated Amperage | -      | 4.4    |

| Test Data          |        |                     |
|--------------------|--------|---------------------|
|                    | Design | Actual              |
| SF CFM             | 2400   | 2348                |
| SF RPM             | -      | -                   |
| MOTOR RPM          | -      | -                   |
| RA CFM             | 2200   | 2128                |
| OA CFM             | 200    | 220                 |
| RL Voltage         | -      | 212/212/213         |
| RL Amperage        | -      | 4.12/4.01/4.15      |
| SF System SetPt    | -      | 96%                 |
| RA Damper Position | -      | 79%                 |
| RA Damper Type     | -      | MECHANICALLY LINKED |
| OA Damper Position | -      | 21%                 |
| OA Damper Type     | -      | OPPOSABLE BLADE     |

| Performance Data |        |        |
|------------------|--------|--------|
|                  | Design | Actual |
| MA Plenum SP     | -      | -0.59" |
| Fan Suction SP   | -      | -0.81" |
| Fan Discharge SP | -      | 0.80"  |
| Total ESP        | 0.50"  | 1.39"  |
| Fan Total SP     | -      | 1.61"  |

Completed By: Corey Dick on 11/06/2025

## Unit Data - PHOTO LOG



11/06/2025

**National TAB**  
 Project: 11-03-25 WAWA #7210 EASTGATE, OH  
**AHU/RTU**



**Diffuser Supply (GRD)**

**RTU3/FOH**

| <b>Asset</b>      |                 |             |             |                   |           |               |               |                  |                    |
|-------------------|-----------------|-------------|-------------|-------------------|-----------|---------------|---------------|------------------|--------------------|
| <b>Asset Name</b> | <b>Location</b> | <b>Type</b> | <b>Size</b> | <b>DESIGN CFM</b> | <b>AK</b> | <b>CFM(1)</b> | <b>CFM(2)</b> | <b>FINAL CFM</b> | <b>% to design</b> |
| SGRD1             | ENTRANCE        | SD-5        |             | 250               |           | 226           | 230           | 230              | 92.0               |
| SGRD2             | FOH             | SD-2        |             | 450               | 0.26      | 418           | 420           | 420              | 93.3               |
| SGRD3             | FOH             | SD-2        |             | 450               | 0.26      | 408           | 411           | 411              | 91.3               |
| SGRD4             | FOH             | SD-2        |             | 450               | 0.26      | 476           | 477           | 477              | 106.0              |
| SGRD5             | FOH             | SD-2        |             | 450               | 0.26      | 450           | 457           | 457              | 101.6              |
| SGRD6             | ASS. AREA       | SD-1        | 8"          | 200               |           | 143           | 210           | 210              | 105.0              |
| SGRD7             | OFFICE          | SD-1        | 8"          | 150               |           | 238           | 143           | 143              | 95.3               |
| <b>Total</b>      |                 |             |             | <b>2400</b>       |           | <b>2359</b>   | <b>2348</b>   | <b>2348</b>      | <b>97.83%</b>      |

# National TAB

Project: 11-03-25 WAWA #7210 EASTGATE, OH

System/Unit: FAN - Exhaust



Asset: EF1

AREA:RESTROOM

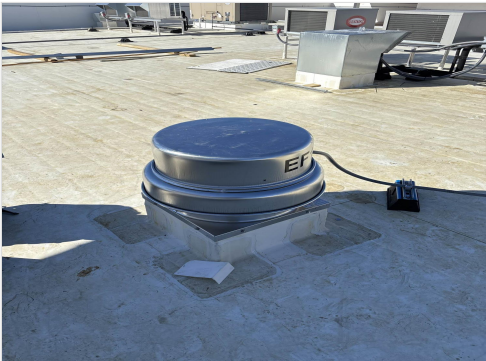
| Unit Data     |           |            |
|---------------|-----------|------------|
|               | Design    | Actual     |
| MFG           | GREENHECK | GREENHECK  |
| Model Num     | GB-098-6  | GB-098-6   |
| Serial Num    | -         | 27949442   |
| Type          | DOWNBLAST | DOWN BLAST |
| Configuration | VERTICAL  | VERTICAL   |

| Test Data        |        |              |
|------------------|--------|--------------|
|                  | Design | Actual       |
| CFM              | 375    | 393          |
| Fan Rotation     | -      | CORRECT      |
| System SetPt     | -      | SINGLE SPEED |
| RL Voltage       | -      | INACCESSIBLE |
| RL Amperage      | -      | INACCESSIBLE |
| Total ESP        | 0.38"  | 0.37"        |
| Fan Inlet SP     | -      | -0.37"       |
| Fan Discharge SP | -      | ATM          |

| Motor Data       |        |        |
|------------------|--------|--------|
|                  | Design | Actual |
| Frame            | -      | 48Y    |
| Horsepower       | 0.167  | 0.167  |
| Motor Rpm        | -      | 1140   |
| Phase            | 1      | 1      |
| Voltage (rated)  | 120    | 115    |
| Amperage (rated) | -      | 2.2    |
| Service Factor   | -      | 1.00   |

Completed By: Corey Dick on 11/12/2025

## Unit Data - PHOTO LOG



11/06/2025

**National TAB**  
 Project:11-03-25 WAWA #7210 EASTGATE, OH  
**FAN - Exhaust**



**Diffuser Ret/Exh (GRD)**

**EF1/RESTROOM**

| <b>Asset</b>      |                 |             |             |                   |           |               |               |                  |                    |
|-------------------|-----------------|-------------|-------------|-------------------|-----------|---------------|---------------|------------------|--------------------|
| <b>Asset Name</b> | <b>Location</b> | <b>Type</b> | <b>Size</b> | <b>DESIGN CFM</b> | <b>AK</b> | <b>CFM(1)</b> | <b>CFM(2)</b> | <b>FINAL CFM</b> | <b>% to design</b> |
| EGRD1             | WOMENS RR       | EG-1        | 8X8         | 150               | 1         | 202           | 113           | 165              | 110.0              |
| EGRD2             | MENS RR         | EG-1        | 8X8         | 225               | 1         | 237           | 267           | 228              | 101.3              |
| <b>Total</b>      |                 |             |             | 375               |           | 439           | 380           | 393              | 104.8%             |

Completed By: Corey Dick on 11/12/2025

# National TAB

Project: 11-03-25 WAWA #7210 EASTGATE, OH

System/Unit: FAN - Exhaust



Asset: EF2

AREA:BOH

| Unit Data     |           |            |
|---------------|-----------|------------|
|               | Design    | Actual     |
| MFG           | GREENHECK | GREENHECK  |
| Model Num     | GB-098-6  | GB-098-6   |
| Serial Num    | -         | 27949443   |
| Type          | DOWNBLAST | DOWN BLAST |
| Configuration | VERTICAL  | VERTICAL   |

| Test Data        |        |                   |
|------------------|--------|-------------------|
|                  | Design | Actual            |
| CFM              | 400    | 387               |
| Fan Rotation     | -      | CORRECT           |
| System SetPt     | -      | LOW (DIAL MARKED) |
| Total ESP        | 0.38"  | 0.34"             |
| Fan Inlet SP     | -      | -0.34"            |
| Fan Discharge SP | -      | ATM               |

| Motor Data       |        |        |
|------------------|--------|--------|
|                  | Design | Actual |
| Frame            | -      | 48Y    |
| Horsepower       | 0.167  | 0.167  |
| Motor Rpm        | -      | 1140   |
| Phase            | 1      | 1      |
| Voltage (rated)  | 120    | 115    |
| Amperage (rated) | -      | 2.2    |

Completed By: Corey Dick on 11/12/2025

## Unit Data - PHOTO LOG



11/06/2025

# National TAB

Project: 11-03-25 WAWA #7210 EASTGATE, OH

## FAN - Exhaust



**Diffuser Ret/Exh (GRD)**

**EF2/BOH**

| <b>Asset</b>      |                 |             |             |                   |           |               |               |                  |                    |
|-------------------|-----------------|-------------|-------------|-------------------|-----------|---------------|---------------|------------------|--------------------|
| <b>Asset Name</b> | <b>Location</b> | <b>Type</b> | <b>Size</b> | <b>DESIGN CFM</b> | <b>AK</b> | <b>CFM(1)</b> | <b>CFM(2)</b> | <b>FINAL CFM</b> | <b>% to design</b> |
| EGRD1             | BOH             | RG-2        | 8X8         | 200               | 1         | 379           | 263           | 198              | 99.0               |
| EGRD2             | BOH             | RG-2        | 8X8         | 200               | 1         | 237           | 234           | 189              | 94.5               |
| <b>Total</b>      |                 |             |             | 400               |           | 616           | 497           | 387              | 96.75%             |

# National TAB

Project: 11-03-25 WAWA #7210 EASTGATE, OH

System/Unit: FAN - Exhaust



Asset: EF3

AREA:TRASH

| Unit Data     |           |             |
|---------------|-----------|-------------|
|               | Design    | Actual      |
| MFG           | GREENHECK | GREENHECK   |
| Model Num     | SP-B200   | SP-B200     |
| Serial Num    | -         | NOT LOCATED |
| Type          | CEILING   | CEILING     |
| Configuration | VERTICAL  | VERTICAL    |

| Test Data    |        |              |
|--------------|--------|--------------|
|              | Design | Actual       |
| CFM          | 200    | 219          |
| Fan Rotation | -      | CORRECT      |
| System SetPt | -      | SINGLE SPEED |

| Motor Data      |        |        |
|-----------------|--------|--------|
|                 | Design | Actual |
| Horsepower      | 0.167  | 0.167  |
| Phase           | 1      | 1      |
| Voltage (rated) | 120    | 120    |

Completed By: Corey Dick on 11/12/2025