

Report By:

National TAB
1329 E. KEMPER ROAD
SUITE 4210
CINCINNATI, OH 45246



Report: TAB Report
Function: Test, Adjust, & Balance
Date: 01/28/2026
Completed By: National TAB

PROJECT

02-16-26 WHATABURGER #1687 LUTZ, FL

25340 Sierra Center Blvd

Lutz, FL

Client

Whataburger Restaurants
300 Concord Plaza Dr
San Antonio, TX 78216

National TAB

Project: 02-16-26 WHATABURGER #1687 LUTZ, FL

Table Of Contents

| Section | Page # |
|---------------------|---------------|
| Summary | 3 |
| Remarks | 4 |
| Balance Schedule | 11 |
| Checklists | 12 |
| AHU/RTU | 21 |
| Traverses | 30 |
| FAN - Exhaust | 31 |
| Kitchen Hood Type I | 38 |
| GRD Layout | 42 |



National TAB

Project: 02-16-26 WHATABURGER #1687 LUTZ, FL
Function: Test, Adjust, & Balance

Project Summary

Project Summary

The summary below provides a quick understanding of our scope of work and general testing procedures. Enclosed in the report are further details about your building performance including recommendations, asset data, and pictures. Our focus is to work with the trades to remedy any issues or deficiencies during the actual field balancing and not after the balancing has occurred to achieve a positive environment and outcome. The level of success is determined by the availability of the trades, possible parts needed, or time constraints.

RTU's (Roof Top Units) w/ Diffusers

Each of the RTU's were measured at their terminal devices or via traverse to establish a total flow for that unit. Each RTU was adjusted to within tolerance of the engineer's design flow. Each outlet was then adjusted to within tolerance of the design flow. Outside air was measured by reading the intake air opening with a velocity grid and multiplying by the free area. The outside air damper was adjusted until the airflow was within the design requirements. Any equipment that fell outside of that tolerance is noted throughout the report.

Kitchen Exhaust Hood & Associated Fans

Each kitchen exhaust fan was measured at the hood filter bay utilizing a velocity matrix and a manufacturer's correction factor. Each filter velocity is multiplied by the manufacturer's corrected area. The sum of these readings equals the total flow of the exhaust fans. The total flow of the exhaust was then adjusted to within tolerance of the design flow. Any EF's that fell outside of this tolerance is noted throughout the report.

Exhaust Fans w/ Registers

The exhaust fan was measured at the grilles to measure the total flow. The fan was then adjusted to bring airflow within tolerance of the engineer's design flow. Each grille was then adjusted to within tolerance of design flow.

Final Building Tests

After completing the test and balance the final building pressure was measured. It was confirmed that the building pressure fell within acceptable tolerances and that the pressure measurement coincides with the actual and design net airflow. Any deviations from these standards are noted throughout the report. The hood capture was tested at the perimeter of the hood and the cook top level with the equipment heat on to ensure satisfactory hood capture and containment.

Issue List

- 1. RTU 3 Ductwork Issues / Diffuser Balance
- EF 4 Low Flow
- EF 4 Speed Controller
- RTU 2 Blower Wheel Dirty
- RTU 3 Blower wheel - Cleaned See Response



02-16-26 WHATABURGER #1687 LUTZ, FL

Project Issue Information

Issue Name : 1. RTU 3 Ductwork Issues / Diffuser Balance

Description : On the Kitchen RTU (RTU-3) only the total flow could be established and some adjustments for comfort made to the diffusers. When NTi attempted to balance the diffusers, airflow was immediately lost and the diffusers with low airflow did not increase as expected. Several leaks were found at the connections from the plenum curb to the flex duct.

Created By : National TAB **Assigned To :** National TAB - Will Turnbough

Status : Open

Priority : Urgent **Asset Tag :**

Originated Date : 03/24/2026 - Stephen Tassinaro - National TAB

Project Issue Response Details

- **03/24/2026 National TAB - Stephen Tassinaro**
 - To further improve the diffuser balance, updated designs will need to be provided to account for the added office diffuser and potential re-engineering of the ductwork given how the current system is performing.

- **03/24/2026 National TAB - Stephen Tassinaro**
 - Additionally the ductwork and diffuser layout on the MSET does not match what is actually in the space. There is a diffuser added in the office and three of the diffusers serving the cookline area are fed by a single common duct. See pictures.



02-16-26 WHATABURGER #1687 LUTZ, FL

Project Issue Information

Issue Name : EF 4 Low Flow
Description : EF 4 (restrooms) is currently at 68% design airflow. Fan is running at max speed (wired directly). Airflow appears to be restricted by the installed backdraft damper, which is heavily spring loaded and cannot open fully during operation. Fan is also not fully sealed to the curb due to placement of conduit. Recommend service.
Created By : National TAB **Assigned To :** National TAB - Will Turnbough
Status : Open
Priority : Urgent **Asset Tag :**
Originated Date : 03/19/2026 - Mark Johnson - National TAB

Project Issue File Details



03/19/2026



03/19/2026



02-16-26 WHATABURGER #1687 LUTZ, FL

Project Issue Information

Issue Name : EF 4 Speed Controller
Description : EF 4's speed controller is not functional, neither as an on/off switch nor to adjust speed. Fan appears to be wired directly to power, bypassing the speed controller. Recommend a replacement speed controller in case of future balancing.
Created By : National TAB **Assigned To :** National TAB - Will Turnbough
Status : Open
Priority : High **Asset Tag :**
Originated Date : 03/19/2026 - Mark Johnson - National TAB

Project Issue File Details



03/19/2026



02-16-26 WHATABURGER #1687 LUTZ, FL

Project Issue Information

Issue Name : RTU 2 Blower Wheel Dirty
Description : RTU 2 Blower wheel shows moderate accumulation of debris. Not as severe as RTU 3, unit still met design. Cleaning recommended.
Created By : National TAB **Assigned To :** National TAB - Will Turnbough
Status : Closed
Priority : Medium **Asset Tag :**
Originated Date : 02/19/2026 - Jackson Gunnels - National TAB

Project Issue File Details



02/19/2026



02/19/2026

Project Issue Response Details

- **03/24/2026 National TAB - Stephen Tassinaro**
 - Blower cleaned by MC, airflow at design.



02-16-26 WHATABURGER #1687 LUTZ, FL

Project Issue Information

Issue Name : RTU 3 Blower wheel - Cleaned See Response
Description : Blower wheel on RTU 3 shows significant accumulation of debris. Profile of fan blades is affected enough that any damper balancing on unit causes significant total air loss. Opened all dampers, and set unit total to preserve comfort. Blower wheel needs to be cleaned or replaced and unit rebalanced.

Created By : National TAB **Assigned To :** National TAB - Will Turnbough

Status : Closed

Priority : Urgent **Asset Tag :**

Originated Date : 02/18/2026 - Jackson Gunnels - National TAB

Project Issue File Details



02/18/2026

Project Issue Response Details

- **03/19/2026 National TAB - Mark Johnson**
 - RTU 3 supply increased to 100% design after opening OA damper. Attempts to balance diffusers were not successful due to ductwork design/layout. Additionally the connections from plenum curb to flex duct are not in great condition and several leaks are present. Closing issue as there is a new issue relating to ductwork.

- **02/19/2026 National TAB - Stephen Tassinaro**

- Per technician: RTU 3 send debris into space whenever the ducts are disturbed, or the blower stops and restarts.
-

AIR BALANCE SCHEDULE

| UNIT | AREA SERVED | HVAC SUPPLY | | HVAC RETURN | | HVAC OUTDOOR | | OA % | | HOOD MAKE-UP | | HOOD EXHAUST | | GENERAL EXH. | |
|---------------|--------------|-------------|--------|-------------|--------|--------------|--------|--------|--------|--------------|--------|--------------|--------|--------------|--------|
| | | DESIGN | ACTUAL | DESIGN | ACTUAL | DESIGN | ACTUAL | DESIGN | ACTUAL | DESIGN | ACTUAL | DESIGN | ACTUAL | DESIGN | ACTUAL |
| RTU-1 | KITCHEN/STOR | 2000 | 1930 | 1300 | 1201 | 700 | 729 | 35.0% | 37.8% | | | | | | |
| RTU-2 | DINING | 3400 | 3402 | 2300 | 2268 | 1100 | 1134 | 32.4% | 33.3% | | | | | | |
| RTU-3 | KITCHEN | 5000 | 5013 | 3365 | 3462 | 1635 | 1551 | 32.7% | 30.9% | | | | | | |
| KEF-1 | GRILL HOOD | | | | | | | | | | | 1995 | 2052 | | |
| KEF-2 | FRYER HOOD | | | | | | | | | | | 1091 | 1118 | | |
| EF-4 | RESTROOMS | | | | | | | | | | | | | 200 | 136 |
| TOTALS | | 10400 | 10345 | 6965 | 6931 | 3435 | 3414 | | | 0 | 0 | 3086 | 3170 | 200 | 136 |

NET BUILDING AIRFLOW CALCULATION

| TOTALS | DESIGN | ACTUAL |
|--------------------|------------|------------|
| TOTAL OA | 3435 | 3414 |
| TOTAL EXHAUST | 3286 | 3306 |
| NET AIRFLOW | 149 | 108 |

| DOOR TESTED | BUILDING PRESSURE MEASUREMENTS (IN. H2O) |
|----------------|--|
| FRONT | 0.0129 |
| SIDE | 0.0119 |
| REAR | 0.0091 |
| AVERAGE | 0.0113 |

FINAL CHECKS

ACTUAL NET AIRFLOW COINCIDES WITH DESIGN: ✓

MEASURED PRESSURES COINCIDES WITH ACTUAL NET AIRFLOW: ✓

NOTES:

CheckList List

- 01: RTU's
- 02: EF's
- 03: Hoods
- 04: Final Checks



02-16-26 WHATABURGER #1687 LUTZ, FL

CheckList Information

Name : 01: RTU's **Status :** Completed

Assigned Organization : National TAB **Asset :**

Requesting Organization : National TAB

Created Date : 01/28/2026 - Trinity Dodds - National TAB

Completed Date : 03/24/2026 - Stephen Tassinaro - National TAB

CheckList Item Details

RTU's/AHU's

| | |
|---------------------------------------|-----|
| Thermostats installed and have power? | N/A |
|---------------------------------------|-----|

Comment:

| | |
|---|------|
| All diffusers and grilles are installed and match design? | Fail |
|---|------|

Comment:

Additional diffuser installed in office

| | |
|--|------|
| Motors are all operating below the FLA rating? | Pass |
|--|------|

Comment:

| | |
|---|-----|
| Is gas piping installed and valves turned on? | N/A |
|---|-----|

Comment:

| | |
|---|------|
| Unit free of noticeable noise and vibration | Pass |
|---|------|

Comment:

| | |
|---|------|
| Final outside air damper position is set manually and marked with permanent marker? | Pass |
|---|------|

Comment:

Supply airflow is 0 to +10%?

Pass

Comment:

Outside airflow is 0 to +10%?

Pass

Comment:

Return balance dampers are confirmed to be 100% open (if installed)?

Pass

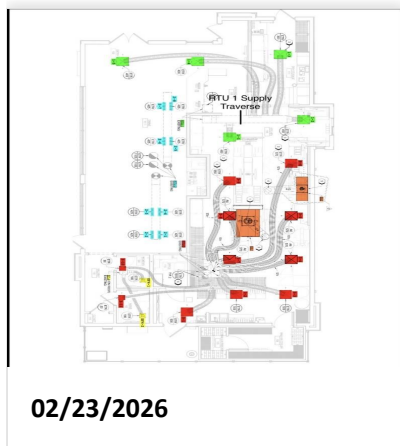
Comment:

Screenshot of the GRD marked up with supply and return traverse locations for RTU-1 (Add picture here)

Pass

Comment:

Return traverse not possible.



Screenshot of the GRD marked up with supply and return traverse locations for RTU-2 (Add picture here)

Fail

Comment:

Return drops too short to be traversed. Not enough straight section of supply drop before diffusers to read total supply without significant turbulence. Additionally, unit was read with VelGrid and kfactor. Supply traverse is unlikely to uncover a leak when read using this method. No leaks observed.

For each unit supply, is the flow hood reading within 10% of the final traverse reading? If not do you feel any major points of leakage

Fail

Comment:

RTU 2 within %10. Unable to traverse other units, no major leakage observed.

For each unit return, is the flow hood reading within 10% of the final traverse reading? If not do you feel any major points of leakage

N/A

Comment:

Unable to traverse return ducts.



02-16-26 WHATABURGER #1687 LUTZ, FL

CheckList Information

Name : 02: EF's **Status :** Completed

Assigned Organization : National TAB **Asset :**

Requesting Organization : National TAB

Created Date : 01/28/2026 - Trinity Dodds - National TAB

Completed Date : 03/24/2026 - Stephen Tassinaro - National TAB

CheckList Item Details

EF's

| | |
|-----------------------------|------|
| Rotation is correct? | Pass |
|-----------------------------|------|

Comment:

| | |
|-------------------------|-----|
| Belts are tight? | N/A |
|-------------------------|-----|

Comment:

| | |
|---|------|
| Hinge kit installed installed on hood fan? | Pass |
|---|------|

Comment:

| | |
|--|------|
| Lean fan back. Is grease duct installation adequate and is duct ran all the way to the base of the fan? | Pass |
|--|------|

Comment:

| | |
|---|------|
| Flex conduit is long enough so that fan can be completely tilted back? | Pass |
|---|------|

Comment:

| | |
|--|------|
| There is no major leakage around base of fan? | Fail |
|--|------|

Comment:

Restroom EF curb leakage due to fan resting on conduit

Is the motor operating below the motor FLA rating?

Pass

Comment:

For restroom fan(s) is the back draft damper installed and can it fully open?

Fail

Comment:

Installed but fan is not able to pull damper open

Unit free of noticeable noise and vibration?

Pass

Comment:

Exhaust airflow is 0 to +10%?

Fail

Comment:

Restroom EF below design. Existing ductwork and backdraft damper causing some restriction.



02-16-26 WHATABURGER #1687 LUTZ, FL

CheckList Information

Name : 03: Hoods **Status :** Completed

Assigned Organization : National TAB **Asset :**

Requesting Organization : National TAB

Created Date : 01/28/2026 - Trinity Dodds - National TAB

Completed Date : 03/24/2026 - Stephen Tassinaro - National TAB

CheckList Item Details

HOODS

| | |
|---|------|
| All hood filters installed and accounted for? | Pass |
|---|------|

Comment:

| | |
|---------------------------------|------|
| Hoods are wired and have power? | Pass |
|---------------------------------|------|

Comment:

| | |
|-------------------------|-----|
| Hood is free of alarms? | N/A |
|-------------------------|-----|

Comment:

| | |
|-------------------------|------|
| Hood is free of damage? | Pass |
|-------------------------|------|

Comment:

| | |
|---|------|
| Quarter or full vertical end panels are installed if specified? | Pass |
|---|------|

Comment:



02-16-26 WHATABURGER #1687 LUTZ, FL

CheckList Information

Name : 04: Final Checks **Status :** Completed

Assigned Organization : National TAB **Asset :**

Requesting Organization : National TAB

Created Date : 01/28/2026 - Trinity Dodds - National TAB

Completed Date : 03/24/2026 - Stephen Tassinaro - National TAB

CheckList Item Details

FINAL CHECKS

Is space free of drafting? Pass

Comment:

Is space comfortable in all areas? Pass

Comment:

Humidity dropping since balance adjustments made, kitchen diffusers were not able to be balanced to design due to various ductwork issues.

Is the space free of ventilation noise? Pass

Comment:

List kitchen equipment turned on for testing

Comment:

NA

List smoke candle type used

Comment:

NA

HOOD CAPTURE TEST

Smoke test capture % - Perimeter of hood

Comment:

100%

Smoke test capture % - Top of cooking surface

Comment:

100%

WITNESS

Date test was completed

03/18/2026

Comment:

TAB tech name / Firm

Comment:

Stephen Tassinaro / NTi

Site super name / Firm

Comment:

N/A

Owner representative name / Firm (if Applicable)

Comment:

N/A

BUILDING PRESSURE

Do actual net building airflow, design net building airflow, and pressure coincide? If not why? (All three should either be positive or negative)

Pass

Comment:

Is the building pressure at least +0.02"? If not, do you see any obvious areas of external building that aren't sealed?

Pass

Comment:

Building pressure +0.01" Building appears sealed.

National TAB

Project: 02-16-26 WHATABURGER #1687 LUTZ, FL

System/Unit: AHU/RTU



Asset: RTU-1

AREA:KITCHEN/DRY STORAGE

| Unit Data | |
|---------------------|-------------------|
| | Actual |
| MFG | CARRIER |
| Serial Num | 0320C85922 |
| Model Num | 50GCN06A2A5A0A0A0 |
| Num OA Filters 1 | 1 |
| OA Filter Size 1 | 28x14 |
| Num Final Filter 1 | 4 |
| Final Filter Size 1 | 16x16x2 |

| Motor Data | |
|----------------|---------|
| | Actual |
| Phase | 1 |
| Rated Voltage | 208/230 |
| Rated Amperage | 8.6 |

| Drive Data | |
|--------------------|--------------|
| | Actual |
| Motor Sheave SetPt | DIRECT DRIVE |

| Test Data | | |
|------------------------|--------|-----------------|
| | Design | Actual |
| SF CFM (Traverse) | - | 2000 |
| SF CFM | 2000 | 1930 |
| SF RPM | - | 2073 |
| MOTOR RPM | - | 2073 |
| RA CFM (Traverse) | - | * |
| RA CFM | 1300 | 1201 |
| OA CFM | 700 | 729 |
| RL Voltage | - | 212/212/212 |
| RL Amperage | - | 6.0 |
| SF System SetPt | - | 8.42VDC |
| Min OA Damper Position | - | MANUAL (MARKED) |
| Min OA Damper Type | - | OPPOSED BLADE |

| Performance Data | |
|------------------|--------|
| | Actual |
| MA Plenum SP | -0.23" |
| Fan Suction SP | -0.69" |
| Fan Discharge SP | 1.12" |
| Total ESP | 1.35" |
| Fan Total SP | 2.04" |

| General | |
|----------------------------|---------|
| | Actual |
| Unit free of Damage | YES |
| Fan Rotation Correct | CORRECT |
| Unit Filters Clean | YES |
| Condensate Drain Installed | YES |

Completed By: Mark Johnson on 03/19/2026

Notes:

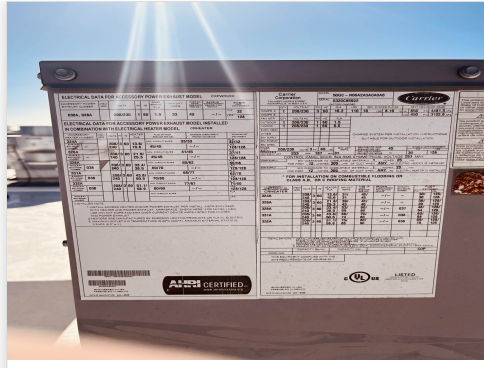
*Unable to traverse return

Written By: Jackson Gunnels on 02/19/2026

Unit Data - PHOTO LOG



02/19/2026



02/19/2026

National TAB

Project:02-16-26 WHATABURGER #1687 LUTZ, FL

AHU/RTU



Diffuser Supply (GRD)

RTU-1/KITCHEN/DRY STORAGE

| Asset | | | | | | | | | |
|------------|--------------|------|------|------------|----|--------|--------|-----------|-------------|
| Asset Name | Location | Type | Size | DESIGN CFM | AK | CFM(1) | CFM(2) | FINAL CFM | % to design |
| SGRD1 | KITCHEN | ETR | NA | 450 | 1 | 515 | 640 | 405 | 90.0 |
| SGRD2 | KITCHEN | ETR | NA | 450 | 1 | 101 | 343 | 422 | 93.8 |
| SGRD3 | DRY STORAGE | ETR | NA | 300 | 1 | 507 | 589 | 283 | 94.3 |
| SGRD4 | SERVING AREA | ETR | NA | 400 | 1 | 442 | 461 | 432 | 108.0 |
| SGRD5 | ENTRY | ETR | NA | 400 | 1 | 363 | 375 | 388 | 97.0 |
| Total | | | | 2000 | | 1928 | 2408 | 1930 | 96.5% |

Completed By: Stephen Tassinaro on 03/18/2026

National TAB

Project: 02-16-26 WHATABURGER #1687 LUTZ, FL

System/Unit: AHU/RTU



Asset: RTU-2

AREA:DINING

| Unit Data | |
|---------------------|-------------------|
| | Actual |
| MFG | CARRIER |
| Serial Num | 030P89347 |
| Model Num | 50HCE09A2A5A0K0A0 |
| Num OA Filters 1 | 1 |
| OA Filter Size 1 | 35x19 |
| Num Final Filter 1 | 4 |
| Final Filter Size 1 | 20x20x2 |

| Motor Data | |
|----------------|----------|
| | Actual |
| Motor MFG | MARATHON |
| Frame | 56HZ |
| Motor Rpm | 1725 |
| Phase | 3 |
| Rated Voltage | 208-230 |
| Rated Amperage | 6.9-6.7 |

| Drive Data | |
|--------------------|-------------|
| | Actual |
| Motor Sheave Size | 4 |
| Motor Bore Size | 5/8 |
| Motor Sheave SetPt | 4 TURNS OUT |
| Fan Sheave Size | AFD74 |
| Fan Sheave Bore | 1" |
| Belt CL Distance | 16.75 |
| Num of Belts | 1 |
| Belt Size | A48 |
| Belt Alignment | GOOD |

| Test Data | | |
|------------------------|--------|-----------------|
| | Design | Actual |
| SF CFM | 3400 | 3402 |
| SF RPM | - | 775 |
| MOTOR RPM | - | 1746 |
| RA CFM | 2300 | 2268 |
| OA CFM | 1100 | 1134 |
| RL Voltage | - | 214/213/212 |
| RL Amperage | - | 4.48/4.77/4.54 |
| SF System SetPt | - | 60 HZ |
| Min OA Damper Position | - | MANUAL (MARKED) |
| Min OA Damper Type | - | OPPOSED BLADE |

| Performance Data | |
|------------------|--------|
| | Actual |
| MA Plenum SP | -0.22" |
| Fan Suction SP | -0.81" |
| Fan Discharge SP | 0.51" |
| Total ESP | 0.73" |
| Fan Total SP | 1.32" |

| General | |
|----------------------------|--------|
| | Actual |
| Unit free of Damage | YES |
| Fan Rotation Correct | YES |
| Unit Filters Clean | YES |
| Condensate Drain Installed | YES |

Completed By: Mark Johnson on 03/19/2026

Notes:
Unable to traverse unit

Written By: Jackson Gunnels on 02/19/2026

Unit Data - PHOTO LOG



National TAB

Project:02-16-26 WHATABURGER #1687 LUTZ, FL

AHU/RTU



Diffuser Supply (GRD)

RTU-2/DINING

| Asset | | | | | | | | | |
|------------|----------|------|------|------------|------|--------|--------|-----------|-------------|
| Asset Name | Location | Type | Size | DESIGN CFM | AK | CFM(1) | CFM(2) | FINAL CFM | % to design |
| SGRD1 | DINING | ETR | NA | 425 | 0.95 | 505 | 459 | 459 | 108.0 |
| SGRD2 | DINING | ETR | NA | 425 | 0.95 | 670 | 432 | 432 | 101.6 |
| SGRD3 | DINING | ETR | NA | 425 | 0.95 | 441 | 440 | 440 | 103.5 |
| SGRD4 | DINING | ETR | NA | 425 | 0.95 | 419 | 395 | 395 | 92.9 |
| SGRD5 | DINING | ETR | NA | 425 | 0.95 | 428 | 437 | 437 | 102.8 |
| SGRD6 | DINING | ETR | NA | 425 | 0.95 | 513 | 409 | 409 | 96.2 |
| SGRD7 | DINING | ETR | NA | 425 | 0.95 | 484 | 416 | 416 | 97.9 |
| SGRD8 | DINING | ETR | NA | 425 | 0.95 | 482 | 414 | 414 | 97.4 |
| Total | | | | 3400 | | 3942 | 3402 | 3402 | 100.06% |

Completed By: Mark Johnson on 03/19/2026

National TAB

Project: 02-16-26 WHATABURGER #1687 LUTZ, FL

System/Unit: AHU/RTU



Asset: RTU-3

AREA:KITCHEN

| Unit Data | |
|---------------------|-------------------|
| | Actual |
| MFG | CARRIER |
| Serial Num | 0320P05391 |
| Model Num | 50HCD14A2A5A0K0A0 |
| Num OA Filters 1 | 2 |
| OA Filter Size 1 | 22.5x25.5 |
| Num Final Filter 1 | 6 |
| Final Filter Size 1 | 18X24X2 |

| Motor Data | |
|----------------|----------|
| | Actual |
| Motor MFG | MARATHON |
| Frame | 56HZ |
| Motor Rpm | 1725 |
| Phase | 3 |
| Rated Voltage | 230 |
| Rated Amperage | 10.6 |

| Drive Data | |
|--------------------|---------------|
| | Actual |
| Motor Sheave Size | 4.75 |
| Motor Bore Size | 7/8 |
| Motor Sheave SetPt | 1.0 TURNS OUT |
| Fan Sheave Size | AK104 |
| Fan Sheave Bore | 1 3/16 |
| Belt CL Distance | 20.5 |
| Num of Belts | 1 |
| Belt Size | A61 |
| Belt Alignment | POOR |

| Test Data | | |
|------------------------|--------|-----------------|
| | Design | Actual |
| SF CFM | 5000 | 5013 |
| SF RPM | - | 720 |
| MOTOR RPM | - | 1726 |
| RA CFM | 3365 | 3462 |
| OA CFM | 1635 | 1551 |
| RL Voltage | - | 214/213/213 |
| RL Amperage | - | 7.22/7.45/7.34 |
| SF System SetPt | - | 60 HZ |
| Min OA Damper Position | - | MANUAL (MARKED) |
| Min OA Damper Type | - | OPPOSED BLADE |

| Performance Data | |
|------------------|--------|
| | Actual |
| MA Plenum SP | -0.46" |
| Fan Suction SP | -0.96" |
| Fan Discharge SP | 0.52" |
| Total ESP | 0.98" |
| Fan Total SP | 1.48" |

| General | |
|----------------------------|--------|
| | Actual |
| Unit free of Damage | YES |
| Fan Rotation Correct | YES |
| Unit Filters Clean | YES |
| Condensate Drain Installed | YES |

Completed By: Mark Johnson on 03/19/2026

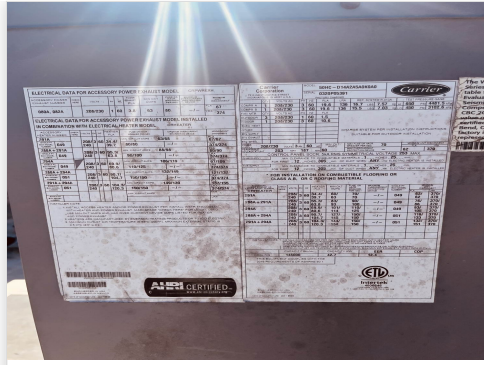
Notes:
Fan sheave sits further out than motor sheave

Written By: Jackson Gunnels on 02/18/2026

Unit Data - PHOTO LOG



02/19/2026



02/19/2026

Motor Data - PHOTO LOG



02/18/2026

National TAB

Project:02-16-26 WHATABURGER #1687 LUTZ, FL

AHU/RTU



Diffuser Supply (GRD)

RTU-3/KITCHEN

| Asset | | | | | | | | | |
|------------|------------|------|------|------------|----|--------|--------|-----------|-------------|
| Asset Name | Location | Type | Size | DESIGN CFM | AK | CFM(1) | CFM(2) | FINAL CFM | % to design |
| SGRD1 | BOH | ETR | NA | 500 | 1 | 367 | 427 | 637 | 127.4 |
| SGRD2 | WASHROOM | ETR | NA | 500 | 1 | 567 | 661 | 575 | 115.0 |
| SGRD3 | KITCHEN | ETR | NA | 500 | 1 | 514 | 599 | 767 | 153.4 |
| SGRD4 | KITCHEN | ETR | NA | 570 | 1 | 406 | 473 | 425 | 74.6 |
| SGRD5 | KITCHEN | ETR | NA | 570 | 1 | 362 | 422 | 455 | 79.8 |
| SGRD6 | KITCHEN | ETR | NA | 570 | 1 | 244 | 284 | 367 | 64.4 |
| SGRD7 | KITCHEN | ETR | NA | 570 | 1 | 587 | 684 | 423 | 74.2 |
| SGRD8 | KITCHEN | ETR | NA | 570 | 1 | 348 | 405 | 422 | 74.0 |
| SGRD9 | KITCHEN | ETR | NA | 550 | 1 | 704 | 820 | 639 | 116.2 |
| SGRD10 | WOMEN'S RR | ETR | NA | 50 | 1 | 118 | 137 | 53 | 106.0 |
| SGRD11 | MEN'S RR | ETR | NA | 50 | 1 | 135 | 157 | 50 | 100.0 |
| SGRD12 | OFFICE | NA | NA | | 1 | 198 | 305 | 200 | - |
| Total | | | | 5000 | | 4550 | 5374 | 5013 | 100.26% |

Completed By: Mark Johnson on 03/19/2026

| Asset | Notes | Date | Written By |
|-------|---|------------|-------------------|
| SGRD1 | When dampers were adjusted, significant loss of total performance occurred. Left dampers open to maintain total flow. | 02/26/2026 | Stephen Tassinaro |



National TAB

Project:02-16-26 WHATABURGER #1687 LUTZ, FL

Diffuser Supply (GRD)

TRAVERSES/

| Asset | | | | | |
|------------------------|-------------|-------------------|---------------|------------------|--------------------|
| Asset Name | Size | DESIGN CFM | VEL(1) | FINAL CFM | % to design |
| RETURN TRAVERSE - RTU1 | | | | | |
| RETURN TRAVERSE - RTU2 | | | | | |
| SUPPLY TRAVERSE - RTU1 | 16x18 | 2000 | 1000 | 2000 | 100.0 |
| SUPPLY TRAVERSE - RTU2 | | | | | |
| Total | | 2000 | | 2000 | 100% |

National TAB

Project: 02-16-26 WHATABURGER #1687 LUTZ, FL

System/Unit: FAN - Exhaust



Asset: EF-4

AREA:RESTROOM

| Unit Data | |
|---------------|-------------|
| | Actual |
| MFG | CAPTIVEAIRE |
| Model Num | DR10HFA |
| Serial Num | 3908428 |
| Type | CENTRIFUGAL |
| Configuration | DOWNBLAST |

| Test Data | | |
|--------------|--------|---------|
| | Design | Actual |
| CFM | 200 | 136 |
| Fan Rotation | - | CORRECT |
| System SetPt | - | MAX |
| RL Amperage | - | 0.63 |

| Motor Data | |
|------------------|--------|
| | Actual |
| Horsepower | 0.060 |
| Phase | 1 |
| Voltage (rated) | 115 |
| Amperage (rated) | 1.1 |

Completed By: Mark Johnson on 03/19/2026

National TAB

Project:02-16-26 WHATABURGER #1687 LUTZ, FL

FAN - Exhaust



Diffuser Ret/Exh (GRD)

EF-4/RESTROOM

| Asset | | | | | | | | | |
|------------|----------|------|------|------------|----|--------|--------|-----------|-------------|
| Asset Name | Location | Type | Size | DESIGN CFM | AK | CFM(1) | CFM(2) | FINAL CFM | % to design |
| EGRD1 | RESTROOM | ETR | NA | 100 | 1 | 78 | 46 | 64 | 64.0 |
| EGRD2 | RESTROOM | ETR | NA | 100 | 1 | 78 | 58 | 72 | 72.0 |
| Total | | | | 200 | | 156 | 104 | 136 | 68% |

National TAB

Project: 02-16-26 WHATABURGER #1687 LUTZ, FL

System/Unit: FAN - Exhaust



Asset: KEF-1

AREA:GRIDDLE

| Unit Data | | |
|---------------|------------|--------------|
| | Design | Actual |
| MFG | GREENHECK | CAPTIVE AIRE |
| Model Num | CUE-140-VG | DU180HFA |
| Serial Num | - | 8357473 |
| Type | UPBLAST | CENTRIFUGAL |
| Configuration | VERTICAL | UPBLAST |

| Motor Data | | |
|------------------|--------|----------------------|
| | Design | Actual |
| Motor MFG | - | TECO WESTINGHOUSE |
| Frame | - | 145T |
| Horsepower | 0.75 | 1 |
| Motor Rpm | - | 1150 |
| Phase | 1 | 3 |
| Voltage (rated) | 208 | 230 |
| Amperage (rated) | - | 3.44 |
| Service Factor | - | 1.15 |

| Test Data | | |
|------------------|--------|--------------|
| | Design | Actual |
| CFM | 1995 | 2052 |
| Fan RPM | - | 882 |
| Fan Rotation | - | CORRECT |
| Motor RPM | - | DIRECT DRIVE |
| System SetPt | - | 46.0 HZ |
| RL Voltage | - | 129 VFD |
| RL Amperage | - | 2.85 VFD |
| Total ESP | 1.00" | 0.69" |
| Fan Inlet SP | - | -0.69" |
| Fan Discharge SP | - | ATM |

Completed By: Mark Johnson on 03/19/2026

National TAB

Project: 02-16-26 WHATABURGER #1687 LUTZ, FL

System/Unit: FAN - Exhaust



Asset: KEF-2

AREA:FRYER

| Unit Data | | |
|---------------|------------|--------------|
| | Design | Actual |
| MFG | GREENHECK | CAPTIVE AIRE |
| Model Num | CUE-120-VG | DU50HFA |
| Serial Num | - | 8357473 |
| Type | UPBLAST | CENTRIFUGAL |
| Configuration | VERTICAL | UPBLAST |

| Motor Data | | |
|------------------|--------|-------------|
| | Design | Actual |
| Motor MFG | - | TELCO GREEN |
| Horsepower | 0.25 | 0.5 |
| Motor Rpm | - | 1800 |
| Phase | 1 | 1 |
| Voltage (rated) | 208 | 208 |
| Amperage (rated) | - | 3.8 |

| Test Data | | |
|------------------|--------|---------|
| | Design | Actual |
| CFM | 1091 | 1118 |
| Fan RPM | - | 1049 |
| Fan Rotation | - | CORRECT |
| Motor RPM | - | 1049 |
| System SetPt | - | 52% |
| RL Voltage | - | 213 |
| RL Amperage | - | 1.51 |
| Total ESP | 0.75" | 0.43" |
| Fan Inlet SP | - | -0.43" |
| Fan Discharge SP | - | ATM |

Completed By: Mark Johnson on 03/19/2026

Notes:

FLA not printed on motor label, read from unit label.

Written By: Jackson Gunnels on 02/20/2026

National TAB

Project: 02-16-26 WHATABURGER #1687 LUTZ, FL

System/Unit: Kitchen Hood Type I



Asset: HD-1

AREA:GRILL

| Unit Data | | |
|------------------|------------------|------------------|
| | Design | Actual |
| MFG | H&K | H&K |
| Model Num | HKD027 | HKD027 |
| Job / Serial Num | - | 8189539 |
| Type | TYPE I CANOPY | TYPE I CANOPY |
| Hood length | 87" | 87" |
| Hood Width | 56" | 56" |

| Test Data Exhaust | | |
|-------------------------|-----------|-----------|
| | Design | Actual |
| Filter Type | FLAMGUARD | FLAMGUARD |
| Filter Size 1 | 20X12 | 20X12 |
| Filter Qty 1 | 8 | 8 |
| Filter AK factor size 1 | 1.5 | 1.5 |
| Filter Total AK Area | 12 | 12 |
| Filter1 FPM | - | 171 |
| Filter2 FPM | - | 192 |
| Filter3 FPM | - | 168 |
| Filter4 FPM | - | 156 |
| Filter5 FPM | - | 162 |
| Filter6 FPM | - | 172 |
| Filter7 FPM | - | 177 |
| Filter8 FPM | - | 174 |
| Filter Ave FPM(corr) | - | 171 |
| CFM | 1994 | 2052 |

| Cooking Equipment | |
|-------------------|-----------|
| | Actual |
| Item 1 | GRIDDLE |
| Item 2 | CLAMSHELL |

Completed By: Mark Johnson on 03/19/2026

National TAB

Project: 02-16-26 WHATABURGER #1687 LUTZ, FL

System/Unit: Kitchen Hood Type I



Asset: HD-2

AREA:FRYER HOOD

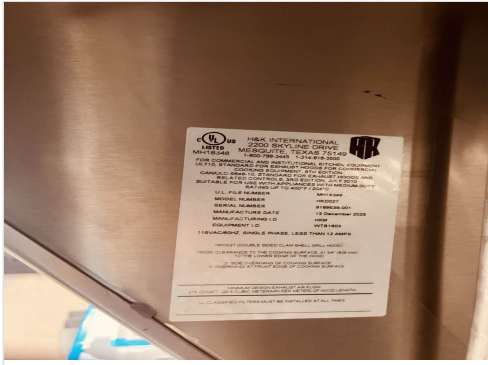
| Unit Data | | |
|------------------|------------------|------------------|
| | Design | Actual |
| MFG | H&K | H&K |
| Model Num | HKD023 | HKD023 |
| Job / Serial Num | - | 8191084 |
| Type | TYPE I CANOPY | TYPE I CANOPY |
| Hood length | 66" | 66" |
| Hood Width | 22" | 22" |

| Test Data Exhaust | | |
|-------------------------|-----------|-----------|
| | Design | Actual |
| Filter Type | FLAMGUARD | FLAMGUARD |
| Filter Size 1 | 16X12 | 16X12 |
| Filter Qty 1 | 4 | 4 |
| Filter AK factor size 1 | 1.16 | 1.16 |
| Filter Total AK Area | 4.64 | 4.64 |
| Filter1 FPM | - | 242 |
| Filter2 FPM | - | 236 |
| Filter3 FPM | - | 252 |
| Filter4 FPM | - | 235 |
| Filter Ave FPM(corr) | - | 241 |
| CFM | 1091 | 1118 |

| Cooking Equipment | |
|-------------------|--------|
| | Actual |
| Item 1 | FRYER |

Completed By: Mark Johnson on 03/19/2026

Unit Data - PHOTO LOG



02/19/2026

