

Report By:

National TAB
1329 E. KEMPER ROAD
SUITE 4210
CINCINNATI, OH 45246



Report: Deficiency Report
Function: Test, Adjust, & Balance
Date: 02/17/2026
Completed By: National TAB

PROJECT

02-16-26 WHATABURGER #1687 LUTZ, FL

25340 Sierra Center Blvd

Lutz, FL

Client

Whataburger Restaurants
300 Concord Plaza Dr
San Antonio, TX 78216

National TAB

Project: 02-16-26 WHATABURGER #1687 LUTZ, FL

Table Of Contents

Section	Page #
Issue Data	3

Issue List

- Additional Diffuser - RTU 3 office
- Backdraft damper
- Evaporator coils, all RTUs
- Exhaust fans - Incorrect Locations
- High Humidity Recorded
- Hood 2 power switch
- KEFs make and model
- Restroom Exhaust Dampers
- Restroom Exhaust Fan Not Running
- Restroom supply dampers
- RTU 1 Fan Speed
- RTU 2 Blower Wheel Dirty
- RTU 2 Required Jumpers to Run
- RTU 3 Debris
- RTU 3 Blower wheel
- RTU 3 pulley allignment
- RTUs 1 and 3OAs Not Reaching Design

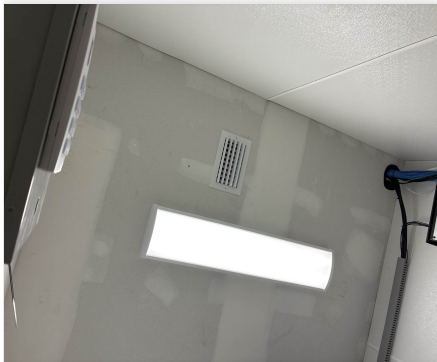


02-16-26 WHATABURGER #1687 LUTZ, FL

Project Issue Information

Issue Name : Additional Diffuser - RTU 3 office
Description : An additional diffuser was installed in office. There was an existing supply flex duct run blowing above ceiling in which the MC tapped into. Currently, damper is fully closed and grill reads 75 CFM. Unable to balance without a CFM target. Recommend engineer review.
Created By : National TAB **Assigned To :** National TAB - Will Turnbough
Status : Open
Priority : Urgent **Asset Tag :**
Originated Date : 02/19/2026 - Jackson Gunnels - National TAB

Project Issue File Details



02/19/2026



02-16-26 WHATABURGER #1687 LUTZ, FL

Project Issue Information

Issue Name : Backdraft damper
Description : No backdraft damper installed in restroom exhaust.
Created By : National TAB **Assigned To :** National TAB - Will Turnbough
Status : Open
Priority : Low **Asset Tag :**
Originated Date : 02/19/2026 - Jackson Gunnels - National TAB

Project Issue File Details



02/19/2026



02-16-26 WHATABURGER #1687 LUTZ, FL

Project Issue Information

Issue Name : Evaporator coils, all RTUs
Description : Evaporator coils on all units are dirty and need to be cleaned.
Created By : National TAB **Assigned To :** National TAB - Will Turnbough
Status : Open
Priority : Urgent **Asset Tag :**
Originated Date : 02/18/2026 - Jackson Gunnels - National TAB

Project Issue File Details





02-16-26 WHATABURGER #1687 LUTZ, FL

Project Issue Information

Issue Name : Exhaust fans - Incorrect Locations
Description : Exhaust fans are mounted on wrong curbs. Unable to balance fans in current state. EF-1 (larger fan) also leaks around curb.
Created By : National TAB **Assigned To :** National TAB - Will Turnbough
Status : Open
Priority : Urgent **Asset Tag :**
Originated Date : 02/19/2026 - Jackson Gunnels - National TAB

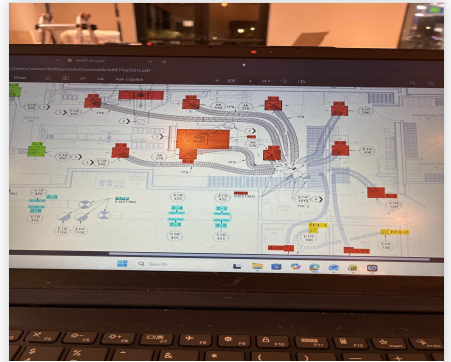
Project Issue File Details



02/19/2026



02/19/2026



02/19/2026



02-16-26 WHATABURGER #1687 LUTZ, FL

Project Issue Information

Issue Name : High Humidity Recorded
Description : Space is very humid, measured at %68 relative humidity. NTi noticed units were not cooling the space effectively. Cleaning evaporator coils may improve their efficiency.
Created By : National TAB **Assigned To :** National TAB - Will Turnbough
Status : Open
Priority : InfoOnly **Asset Tag :**
Originated Date : 02/19/2026 - Jackson Gunnels - National TAB

Project Issue File Details



02/19/2026

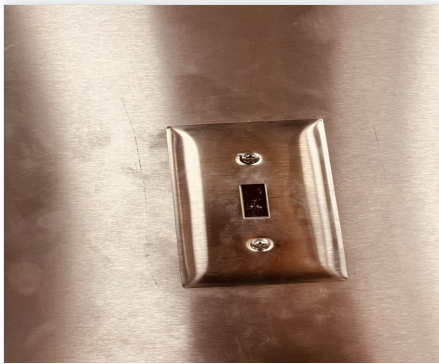


02-16-26 WHATABURGER #1687 LUTZ, FL

Project Issue Information

Issue Name : Hood 2 power switch
Description : Hood 2 power switch is damaged.
Created By : National TAB **Assigned To :** National TAB - Will Turnbough
Status : Open
Priority : Low **Asset Tag :**
Originated Date : 02/19/2026 - Jackson Gunnels - National TAB

Project Issue File Details



02/19/2026

02-16-26 WHATABURGER #1687 LUTZ, FL

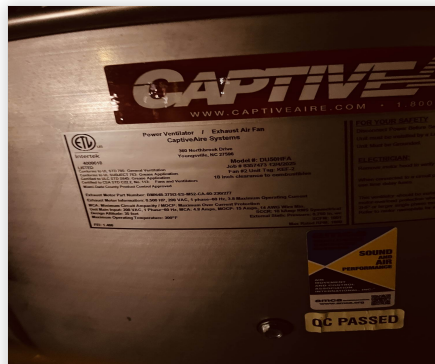
Project Issue Information

Issue Name : KEFs make and model
Description : MSET indicates Greenheck Units to be installed. Current units are Captive Aire models DU180HFA and DU50HFA
Created By : National TAB **Assigned To :** National TAB - Brianna Biggs
Status : Closed
Priority : InfoOnly **Asset Tag :**
Originated Date : 02/19/2026 - Jackson Gunnels - National TAB

Project Issue File Details



02/19/2026



02/19/2026

Project Issue Response Details

- **02/19/2026 National TAB - Stephen Tassinaro**
 - Substitution matches design criteria



02-16-26 WHATABURGER #1687 LUTZ, FL

Project Issue Information

Issue Name : Restroom Exhaust Dampers
Description : Restrooms do not have any face accessible dampers installed. Unable to proportionally balance grills.
Created By : National TAB **Assigned To :** National TAB - Will Turnbough
Status : Open
Priority : High **Asset Tag :**
Originated Date : 02/19/2026 - Jackson Gunnels - National TAB

Project Issue File Details



02/19/2026



02-16-26 WHATABURGER #1687 LUTZ, FL

Project Issue Information

Issue Name : Restroom Exhaust Fan Not Running
Description : Unable to run restroom exhaust fan for balancing. Confirmed breaker is open and restroom was occupied.
Created By : National TAB **Assigned To :** National TAB - Will Turnbough
Status : Open
Priority : Urgent **Asset Tag :**
Originated Date : 02/18/2026 - Jackson Gunnels - National TAB

Project Issue File Details



02/18/2026



02-16-26 WHATABURGER #1687 LUTZ, FL

Project Issue Information

Issue Name : Restroom supply dampers
Description : Parallel blade dampers installed in restroom supply only reduce airflow by half when fully closed, recommend OBDs be installed.
Created By : National TAB **Assigned To :** National TAB - Will Turnbough
Status : Open
Priority : Urgent **Asset Tag :**
Originated Date : 02/19/2026 - Jackson Gunnels - National TAB

Project Issue File Details



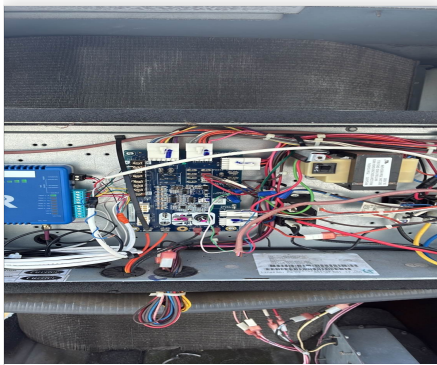


02-16-26 WHATABURGER #1687 LUTZ, FL

Project Issue Information

Issue Name : RTU 1 Fan Speed
Description : RTU 1 did not respond to attempts to adjust fan speed. Runs at maximum. Unable to reduce unit total flow below %112. Fan needs to be reduced to 2140 rpm to meet design.
Created By : National TAB **Assigned To :** National TAB - Will Turnbough
Status : Open
Priority : Urgent **Asset Tag :**
Originated Date : 02/18/2026 - Jackson Gunnels - National TAB

Project Issue File Details



02/19/2026



02-16-26 WHATABURGER #1687 LUTZ, FL

Project Issue Information

Issue Name : RTU 2 Blower Wheel Dirty
Description : RTU 2 Blower wheel shows moderate accumulation of debris. Not as severe as RTU 3, unit still met design. Cleaning recommended.
Created By : National TAB **Assigned To :** National TAB - Will Turnbough
Status : Open
Priority : Medium **Asset Tag :**
Originated Date : 02/19/2026 - Jackson Gunnels - National TAB

Project Issue File Details



02/19/2026



02/19/2026



02-16-26 WHATABURGER #1687 LUTZ, FL

Project Issue Information

Issue Name : RTU 2 Required Jumpers to Run
Description : RTU 2 blower does not run unless manually jumped. Unit is jumped for testing, will be removed when balance is completed.
Created By : National TAB **Assigned To :** National TAB - Will Turnbough
Status : Open
Priority : High **Asset Tag :**
Originated Date : 02/18/2026 - Jackson Gunnels - National TAB

Project Issue File Details



02/18/2026



02-16-26 WHATABURGER #1687 LUTZ, FL

Project Issue Information

Issue Name : RTU 3 Debris
Description : RTU 3 send debris into space whenever the ducts are disturbed, or the blower stops and restarts.
Created By : National TAB **Assigned To :** National TAB - Brianna Biggs
Status : Closed
Priority : High **Asset Tag :**
Originated Date : 02/19/2026 - Jackson Gunnels - National TAB

Project Issue File Details



02/19/2026



02-16-26 WHATABURGER #1687 LUTZ, FL

Project Issue Information

Issue Name : RTU 3 Blower wheel
Description : Blower wheel on RTU 3 shows significant accumulation of debris. Profile of fan blades is affected enough that any damper balancing on unit causes significant total air loss. Opened all dampers, and set unit total to preserve comfort. Blower wheel needs to be cleaned or replaced and unit rebalanced.

Created By : National TAB **Assigned To :** National TAB - Will Turnbough

Status : Open

Priority : Urgent **Asset Tag :**

Originated Date : 02/18/2026 - Jackson Gunnels - National TAB

Project Issue File Details



02/18/2026

Project Issue Response Details

- **02/19/2026 National TAB - Stephen Tassinaro**
 - Per technician: RTU 3 send debris into space whenever the ducts are disturbed, or the blower stops and restarts.



02-16-26 WHATABURGER #1687 LUTZ, FL

Project Issue Information

Issue Name : RTU 3 pulley alignment
Description : RTU 3 Fan sheave pulley is further forward than motor pulley. This increases belt wear. Re-alignment recommended.
Created By : National TAB **Assigned To :** National TAB - Will Turnbough
Status : Open
Priority : Low **Asset Tag :**
Originated Date : 02/19/2026 - Jackson Gunnels - National TAB

Project Issue File Details



02/19/2026



02-16-26 WHATABURGER #1687 LUTZ, FL

Project Issue Information

Issue Name : RTUs 1 and 3OAs Not Reaching Design
Description : Unable to reach design outside air on units with damper full open. RTU 1 601/700CFM design. RTU-3 1000/1635CFM design.
Created By : National TAB **Assigned To :** National TAB - Brianna Biggs
Status : Open
Priority : Urgent **Asset Tag :**
Originated Date : 02/18/2026 - Jackson Gunnels - National TAB

Project Issue File Details



02/19/2026



02/19/2026