

Report By:

National TAB
1329 E. KEMPER ROAD
SUITE 4210
CINCINNATI, OH 45246



Report: TAB Report
Function: Test, Adjust, & Balance
Date: 02/25/2026
Completed By: National TAB

PROJECT
02-16-26 CHOPT COLUMBIA, SC

4840 FOREST DRIVE

FOREST ACRES , SC 29206

Client

Founders Table Restaurant Group

National TAB

Project: 02-16-26 CHOPT COLUMBIA, SC

Table Of Contents

| Section | Page # |
|----------------------|---------------|
| Summary | 3 |
| Remarks | 4 |
| Checklists | 9 |
| AHU/RTU | 19 |
| FAN - Exhaust | 23 |
| Kitchen Hood Type II | 28 |
| GRD Layout | 30 |



National TAB

Project: 02-16-26 CHOPT COLUMBIA, SC
Function: Test, Adjust, & Balance

Project Summary

Project Summary

The summary below provides a quick understanding of our scope of work and general testing procedures. Enclosed in the report is further detail about your building performance including recommendations, asset data, and pictures. Our focus is to work with the trades to remedy any issues or deficiencies during the actual field balancing and not after the balancing has occurred to achieve a positive environment and outcome. The level of success is determined by the availability of the trades, possible parts needed, or time constraints.

RTU's (Roof Top Units) w/ Diffusers

Each of the RTU's were measured at their terminal devices or via traverse to establish a total flow for that unit. Each RTU was adjusted to within tolerance of the engineer's design flow. Each outlet was then adjusted to within tolerance of the design flow. Outside air was measured by reading the intake air opening with a velocity grid and multiplying by the free area. The outside air damper was adjusted until the airflow was within the design requirements. Any equipment that fell outside of that tolerance is noted throughout the report.

General Exhaust Fans w/ Grilles

The general exhaust fans were measured by reading each air device with a flow hood. The total airflow for each fan is equivalent to the sum of these readings. Fan speed was then adjusted so that the airflow was within tolerance of design. Each terminal device was balanced to within tolerance of the design volume using the installed volume dampers. Any equipment that fell outside of this tolerance is noted throughout the report.

Kitchen Exhaust Hood (Type II) & Associated Fans

Each kitchen exhaust fan was measured by traversing the ductwork or ductwork opening at the hood. The total flow of the exhaust fan was then adjusted to tolerance of the design flow. Any EF's that fell outside of this tolerance is noted throughout the report.

Final Building Tests

After completing the test and balance the final building pressure was measured. It was confirmed that the building pressure fell within acceptable tolerances of $-0.02''$ wc to $+0.02''$ wc and that the pressure measurement coincides with the actual and design net airflow. Any deviations from these standards are noted throughout the report.

Issue List

- DEF 1 high flow
- Missing damper RTU 1
- Missing dampers on RTU 2
- No roof access



02-16-26 CHOPT COLUMBIA, SC

Project Issue Information

Issue Name : DEF 1 high flow
Description : Dishwasher hood currently at 162% of design. Unable to access roof.
Created By : National TAB **Assigned To :** National TAB - Dan Hertenstein
Status : Open
Priority : Urgent **Asset Tag :** DEF1
Originated Date : 02/19/2026 - Jearod Ferrette - National TAB

Project Issue Response Details

- **02/19/2026 National TAB - Jearod Ferrette**



02/19/2026

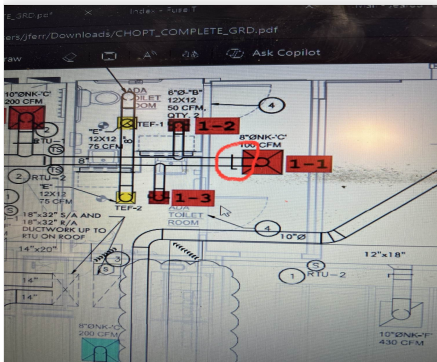


02-16-26 CHOPT COLUMBIA, SC

Project Issue Information

Issue Name : Missing damper RTU 1
Description : Missing face damper on SGRD 1-1
Created By : National TAB **Assigned To :** National TAB - Dan Hertenstein
Status : Open
Priority : Medium **Asset Tag :** SGRD1
Originated Date : 02/19/2026 - Jearod Ferrette - National TAB

Project Issue File Details



02/19/2026

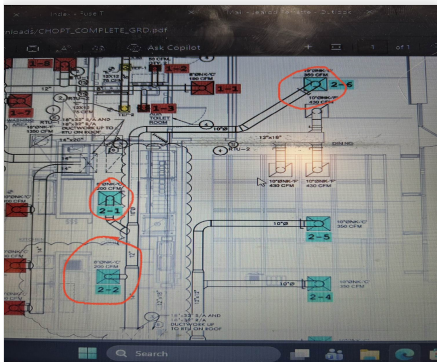


02-16-26 CHOPT COLUMBIA, SC

Project Issue Information

Issue Name : Missing dampers on RTU 2
Description : Missing face dampers. Unable to proportionally balance.
Created By : National TAB **Assigned To :** National TAB - Dan Hertenstein
Status : Open
Priority : Medium **Asset Tag :** RTU2
Originated Date : 02/19/2026 - Jearod Ferrette - National TAB

Project Issue File Details



02/19/2026



02/19/2026



02/19/2026

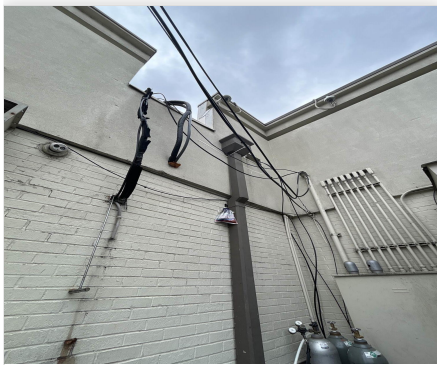


02-16-26 CHOPT COLUMBIA, SC

Project Issue Information

Issue Name : No roof access
Description : Facilities does not have roof access or ladder to access roof. Unable to access RTUs safely.
Created By : National TAB **Assigned To :** National TAB - Dan Hertenstein
Status : Open
Priority : Urgent **Asset Tag :** HVAC EQUIPMENT 1
Originated Date : 02/19/2026 - Jearod Ferrette - National TAB

Project Issue File Details



02/19/2026



02/19/2026

CheckList List

- 01: RTU'S/AHU'S
- 02: EF'S
- 03: MUA
- 04: HOODS
- 05: FINAL TESTS



02-16-26 CHOPT COLUMBIA, SC

CheckList Information

Name : 01: RTU'S/AHU'S **Status :** Not Completed
Assigned Organization : National TAB **Asset :**
Requesting Organization : National TAB
Created Date : 02/18/2026 - Natasha Louw - National TAB

CheckList Item Details

RTU's/AHU's

Thermostats installed and have power? Pass

Comment:

All diffusers and grilles are installed and match design? Pass

Comment:

Economizer blank plate is installed below the outside air intake (Trane only) (N/A = not applicable)

Comment:

Economizers are assembled and functional?

Comment:

Free cooling enthalpy set point set for lowest setting (Typically "D")

Comment:

Motors are all operating below the FLA rating?

Comment:

Are belts tight?

Comment:

If direct drive unit is the speed controller working?

Comment:

Is gas piping installed and valves turned on?

Comment:

Unit free of noticeable noise and vibration

Comment:

Final outside air damper position is marked with permanent marker?

Comment:



02-16-26 CHOPT COLUMBIA, SC

CheckList Information

Name : 02: EF'S **Status :** Not Completed
Assigned Organization : National TAB **Asset :**
Requesting Organization : National TAB
Created Date : 02/18/2026 - Natasha Louw - National TAB

CheckList Item Details

EF's

Rotation is correct? Pass

Comment:

Belts are tight? N/A

Comment:

Hinge kit installed installed on hood fan?

Comment:

Lean any hood fans back. Is grease duct installation adequate and is duct ran all the way to the base of the fan?

Comment:

Flex conduit is long enough so that fan can be completely tilted back?

Comment:

There is no major leakage around base of fans?

Comment:

Is the motor operating below the motor FLA rating?

Comment:

For restroom fan(s) is the back draft damper installed if specified and can it fully open?

Comment:

Unit free of noticeable noise and vibration?

Comment:

For direct drive fans, mark the final setting on the speed controller with permanent marker

Comment:



02-16-26 CHOPT COLUMBIA, SC

CheckList Information

Name : 03: MUA **Status :** Completed
Assigned Organization : National TAB **Asset :**
Requesting Organization : National TAB
Created Date : 02/18/2026 - Natasha Louw - National TAB
Completed Date : 02/19/2026 - Jearod Ferrette - National TAB

CheckList Item Details

MUA

Rotation is correct? N/A

Comment:

Gas piping is installed and valves are in on position? N/A

Comment:

Internal motorized damper is fully opening? N/A

Comment:

Motor is operating below the FLA rating? N/A

Comment:

Unit free of noticeable noise and vibration? N/A

Comment:

If unit is heated is the heater functional? (If not heated put N/A) N/A

Comment:

If unit has cooling, is cooling functional (If no cooling installed put N/A) N/A

Comment:



02-16-26 CHOPT COLUMBIA, SC

CheckList Information

Name : 04: HOODS **Status :** Not Completed
Assigned Organization : National TAB **Asset :**
Requesting Organization : National TAB
Created Date : 02/18/2026 - Natasha Louw - National TAB

CheckList Item Details

HOODS

All hood filters installed and accounted for? N/A

Comment:

Hoods are wired and have power? Pass

Comment:

Hood is free of alarms? Pass

Comment:

Hood is free of damage? Pass

Comment:

Quarter or full vertical end panels are installed if specified? Pass

Comment:



02-16-26 CHOPT COLUMBIA, SC

CheckList Information

Name : 05: FINAL TESTS **Status :** Not Completed
Assigned Organization : National TAB **Asset :**
Requesting Organization : National TAB
Created Date : 02/18/2026 - Natasha Louw - National TAB

CheckList Item Details

FINAL CHECKS

Is space free of drafting? Pass

Comment:

Is space comfortable in all areas? Pass

Comment:

Is the space free of ventilation noise? Pass

Comment:

HOOD CAPTURE TEST

List kitchen equipment turned on for testing

Comment:

Dishwasher

List smoke candle type used

Comment:

smoke candle

Smoke test capture % - Perimeter of hood

Comment:

Smoke test capture % - Top of cooking surface

Comment:

WITNESS

Date test was completed

Comment:

TAB tech name / Firm

Comment:

JEAROD FERRETTE/ NTAB

Site super name / Firm

Comment:

NA

Owner representative name / Firm (if Applicable)

Comment:

NA

BUILDING PRESSURE

Building pressure at all doors:

Comment:

Do actual net building airflow, design net building airflow, and pressure coincide? If not why? (All three should either be positive or negative)

Comment:

National TAB

Project: 02-16-26 CHOPT COLUMBIA, SC
System/Unit: AHU/RTU



Asset: RTU1

AREA: KITCHEN

| Unit Data | | |
|---------------------|-------------|-------------|
| | Design | Actual |
| MFG | TRANE | TRANE |
| Serial Num | - | |
| Model Num | YHK072A3S0M | YHK072A3S0M |
| Type | RTU | RTU |
| Configuration | VERTICAL | VERTICAL |
| Num OA Filters 1 | - | |
| OA Filter Size 1 | - | |
| Num Final Filter 1 | - | |
| Final Filter Size 1 | - | |
| Num Final Filter 2 | - | |
| Final Filter Size 2 | - | |

| Motor Data | | |
|----------------|--------|--------|
| | Design | Actual |
| Motor MFG | - | |
| Frame | - | |
| Horsepower | - | |
| Motor Rpm | - | |
| Phase | 3 | |
| Rated Voltage | 208 | |
| Rated Amperage | - | |

| Drive Data | |
|--------------------|--------|
| | Actual |
| Motor Sheave Size | |
| Motor Bore Size | |
| Motor Sheave SetPt | |
| Fan Sheave Size | |
| Fan Sheave Bore | |
| Belt CL Distance | |
| Num of Belts | |
| Belt Size | |
| Belt Alignment | |

| Test Data | | |
|------------------------|--------|--------|
| | Design | Actual |
| SF CFM | 1800 | |
| SF RPM | - | |
| RA CFM | 1350 | |
| OA CFM | 450 | |
| RL Voltage | - | |
| RL Amperage | - | |
| SF Rotation | - | |
| SF System SetPt | - | |
| RA Damper Position | - | |
| Min OA Damper Position | - | |
| Min OA Damper Type | - | ECON |
| OA Enthalpy Setpt | - | |

| Performance Data | | |
|------------------|--------|--------|
| | Design | Actual |
| MA Plenum SP | - | |
| Fan Suction SP | - | |
| Fan Discharge SP | - | |
| Total ESP | 1.0" | |
| Fan Total SP | - | |

| General | |
|----------------------------|--------|
| | Actual |
| Fan Rotation Correct | |
| Unit Filters Clean | |
| Condensate Drain Installed | |

Notes:
NO ACCESS TO ROOF

Written By: Jearod Ferrette on 02/19/2026

National TAB
 Project:02-16-26 CHOPT COLUMBIA, SC
AHU/RTU



Diffuser Supply (GRD)

RTU1/KITCHEN

| Asset | | | | | | | | | |
|-------------------|-----------------|-------------|-------------|-------------------|-----------|---------------|---------------|------------------|--------------------|
| Asset Name | Location | Type | Size | DESIGN CFM | AK | CFM(1) | CFM(2) | FINAL CFM | % to design |
| SGRD1 | HALLWAY | C | 8" | 100 | 1 | 134 | | 134 | 134.0 |
| SGRD2 | RESTROOM | B | 12X12 | 50 | 1 | 52 | | 52 | 104.0 |
| SGRD3 | RESTROOM | B | 12X12 | 50 | 1 | 50 | | 50 | 100.0 |
| SGRD4 | KITCHEN | C | 10" | 200 | 1 | 297 | | 297 | 148.5 |
| SGRD5 | KITCHEN | C | 10" | 300 | 1 | 305 | | 305 | 101.7 |
| SGRD6 | KITCHEN | C | 10" | 300 | 1 | 258 | | 258 | 86.0 |
| SGRD7 | KITCHEN | C | 10" | 300 | 1 | 161 | | 161 | 53.7 |
| SGRD8 | KITCHEN | C | 10" | 200 | 1 | 172 | | 172 | 86.0 |
| SGRD9 | KITCHEN | C | 10" | 300 | 1 | 323 | | 323 | 107.7 |
| Total | | | | 1800 | | 1752 | 0 | 1752 | 97.33% |

| Asset | Notes | Date | Written By |
|--------------|----------------|-------------|-------------------|
| SGRD1 | NO FACE DAMPER | 02/19/2026 | Jearod Ferrette |

National TAB

Project: 02-16-26 CHOPT COLUMBIA, SC
System/Unit: AHU/RTU



Asset: RTU2

AREA:DINING

| Unit Data | | |
|---------------------|-------------|-------------|
| | Design | Actual |
| MFG | TRANE | TRANE |
| Serial Num | - | |
| Model Num | YHK072A3S0H | YHK072A3S0H |
| Type | RTU | RTU |
| Configuration | VERTICAL | VERTICAL |
| Num OA Filters 1 | - | |
| OA Filter Size 1 | - | |
| Num Final Filter 1 | - | |
| Final Filter Size 1 | - | |
| Num Final Filter 2 | - | |
| Final Filter Size 2 | - | |

| Motor Data | | |
|----------------|--------|--------|
| | Design | Actual |
| Motor MFG | - | |
| Frame | - | |
| Horsepower | - | |
| Motor Rpm | - | |
| Phase | 3 | |
| Rated Voltage | 208 | |
| Rated Amperage | - | |

| Drive Data | |
|--------------------|--------|
| | Actual |
| Motor Sheave Size | |
| Motor Bore Size | |
| Motor Sheave SetPt | |
| Fan Sheave Size | |
| Fan Sheave Bore | |
| Belt CL Distance | |
| Num of Belts | |
| Belt Size | |
| Belt Alignment | |

| Test Data | | |
|------------------------|--------|--------|
| | Design | Actual |
| SF CFM | 1800 | |
| SF RPM | - | |
| RA CFM | 1290 | |
| OA CFM | 510 | |
| RL Voltage | - | |
| RL Amperage | - | |
| SF Rotation | - | |
| SF System SetPt | - | |
| RA Damper Position | - | |
| Min OA Damper Position | - | |
| Min OA Damper Type | - | ECON |
| OA Enthalpy Setpt | - | |

| Performance Data | | |
|------------------|--------|--------|
| | Design | Actual |
| MA Plenum SP | - | |
| Fan Suction SP | - | |
| Fan Discharge SP | - | |
| Total ESP | 1.0" | |
| Fan Total SP | - | |

| General | |
|----------------------------|--------|
| | Actual |
| Fan Rotation Correct | |
| Unit Filters Clean | |
| Condensate Drain Installed | |

National TAB

Project:02-16-26 CHOPT COLUMBIA, SC

AHU/RTU



Diffuser Supply (GRD)

RTU2/DINING

| Asset | | | | | | | | | |
|------------|---------------|------|------|------------|----|--------|--------|-----------|-------------|
| Asset Name | Location | Type | Size | DESIGN CFM | AK | CFM(1) | CFM(2) | FINAL CFM | % to design |
| SGRD1 | FRONT COUNTER | C | 8" | 200 | 1 | 244 | | 244 | 122.0 |
| SGRD2 | FRONT COUNTER | C | 8" | 200 | 1 | 202 | | 202 | 101.0 |
| SGRD3 | DINING | C | 10" | 350 | 1 | 264 | | 264 | 75.4 |
| SGRD4 | DINING | C | 10" | 350 | 1 | 171 | | 171 | 48.9 |
| SGRD5 | DINING | C | 10" | 350 | 1 | 265 | | 265 | 75.7 |
| SGRD6 | DINING | C | 10" | 350 | 1 | 378 | | 378 | 108.0 |
| Total | | | | 1800 | | 1524 | 0 | 1524 | 84.67% |

| Asset | Notes | Date | Written By |
|-------|----------------|------------|-----------------|
| SGRD1 | NO FACE DAMPER | 02/19/2026 | Jearod Ferrette |
| SGRD2 | NO FACE DAMPER | 02/19/2026 | Jearod Ferrette |
| SGRD6 | NO FACE DAMPER | 02/19/2026 | Jearod Ferrette |

National TAB

Project: 02-16-26 CHOPT COLUMBIA, SC
System/Unit: FAN - Exhaust



Asset: DEF1

AREA: KITCHEN HD

| Unit Data | | |
|---------------|-------------|-------------|
| | Design | Actual |
| MFG | ACCUREX | ACCUREX |
| Model Num | XCUE-099-VG | XCUE-099-VG |
| Serial Num | - | |
| Type | UPBLAST | UPBLAST |
| Configuration | VERTICAL | VERTICAL |

| Test Data | | |
|------------------|--------|--------|
| | Design | Actual |
| CFM | 600 | 972 |
| Fan RPM | 1318 | |
| Fan Rotation | - | |
| Motor RPM | - | |
| System SetPt | - | |
| RL Voltage | - | |
| RL Amperage | - | |
| Total ESP | 0.56" | |
| Fan Inlet SP | - | |
| Fan Discharge SP | - | ATMO |

| Motor Data | | |
|------------------|--------|--------|
| | Design | Actual |
| Motor MFG | - | |
| Frame | - | |
| Horsepower | 0.25 | 0.25 |
| Motor Rpm | - | |
| Phase | 1 | 1 |
| Voltage (rated) | 115 | 115 |
| Amperage (rated) | - | |
| Service Factor | - | |

Notes:
NO ACCESS TO ROOF

Written By: Jearod Ferrette on 02/19/2026

National TAB

Project: 02-16-26 CHOPT COLUMBIA, SC
System/Unit: FAN - Exhaust



Asset: TEF1

AREA:RESTROOM

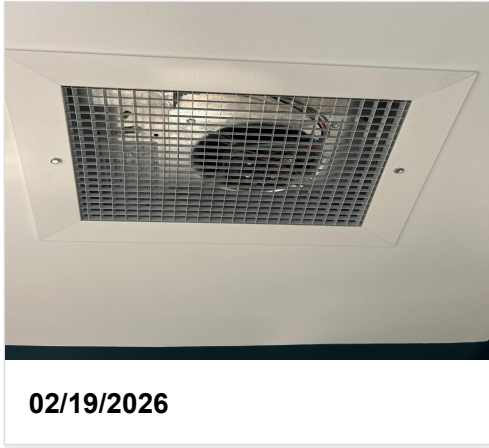
| Unit Data | | |
|---------------|----------|----------|
| | Design | Actual |
| MFG | COOK | COOK |
| Model Num | GC-146 | GC-146 |
| Type | CEILING | CEILING |
| Configuration | VERTICAL | VERTICAL |

| Motor Data | | |
|------------------|--------|--------|
| | Design | Actual |
| Motor MFG | - | QUEACE |
| Frame | - | NA |
| Horsepower | 0.05 | 0.05 |
| Motor Rpm | - | 1550 |
| Phase | 1 | 1 |
| Voltage (rated) | 115 | 115 |
| Amperage (rated) | - | 0.40 |
| Service Factor | - | 1 |

| Test Data | | |
|------------------|--------|--------|
| | Design | Actual |
| CFM | 75 | 69 |
| Fan RPM | - | DD |
| Fan Rotation | - | CCW |
| Motor RPM | - | DD |
| System SetPt | - | MAX |
| RL Voltage | - | NA |
| RL Amperage | - | 0.34 |
| Fan Discharge SP | - | ATMO |

Completed By: Jearod Ferrette on 02/19/2026

Unit Data - PHOTO LOG



National TAB

Project: 02-16-26 CHOPT COLUMBIA, SC
System/Unit: FAN - Exhaust



Asset: TEF2

AREA:RESTROOM

| Unit Data | | |
|---------------|----------|----------|
| | Design | Actual |
| MFG | COOK | COOK |
| Model Num | GC-146 | GC-146 |
| Type | CEILING | CEILING |
| Configuration | VERTICAL | VERTICAL |

| Motor Data | | |
|------------------|--------|--------|
| | Design | Actual |
| Motor MFG | - | QUEACE |
| Frame | - | NA |
| Horsepower | 0.05 | 0.05 |
| Motor Rpm | - | 1550 |
| Phase | 1 | 1 |
| Voltage (rated) | 115 | 115 |
| Amperage (rated) | - | 0.40 |
| Service Factor | - | 1 |

| Test Data | | |
|------------------|--------|--------|
| | Design | Actual |
| CFM | 75 | 70 |
| Fan RPM | - | DD |
| Fan Rotation | - | CCW |
| Motor RPM | - | DD |
| System SetPt | - | MAX |
| RL Voltage | - | NA |
| RL Amperage | - | 0.34 |
| Fan Discharge SP | - | ATMO |

Completed By: Jearod Ferrette on 02/19/2026

Unit Data - PHOTO LOG



02/19/2026

National TAB

Project: 02-16-26 CHOPT COLUMBIA, SC

System/Unit: Kitchen Hood Type II



Asset: HD1

AREA: WASH AREA

| Unit Data | | |
|-------------|----------------|----------------|
| | Design | Actual |
| MFG | ACCUREX | ACCUREX |
| Model Num | XD1-48-S | XD1-48-S |
| Serial Num | - | |
| Type | TYPE II CANOPY | TYPE II CANOPY |
| Hood length | 48" | 48" |
| Hood Width | 48" | 48" |

| Test Data | | |
|-------------|--------|--------|
| | Design | Actual |
| Exhaust CFM | 600 | 972 |

Unit Data - PHOTO LOG



02/19/2026

