

- CODED NOTES:**
1. PROVIDE SKUTT ENVIRONMENT2 FAN CAPABLE OF EXHAUST 140 CFM THROUGH UP TO 60' OF 4" DUCT WITH THREE 90 DEGREE BENDS. MOUNT THE FAN TO THE WALL BEHIND THE KILN AND WITHIN 8'-0" OF THE KILN. RUN 3" FLEXIBLE ALUMINUM DUCT BETWEEN THE KILN AND THE FAN. RUN 4" PVC FROM THE FAN TO THE EXTERIOR OF THE BUILDING. FAN PLUGS INTO WALL RECEPTACLE AND IS MANUALLY TURNED ON WITH INTEGRAL SWITCH. REFER TO KILN MANUFACTURER'S INSTALLATION INSTRUCTIONS.
 2. LOCATE FIRE DAMPER IN DUCT PENETRATION AT BOTTOM OF RATED SHAFT.
 3. TRANSFER GRILLE AND DUCTWORK WITH MINIMUM TWO ELBOWS.
 4. 4" DIAMETER LAUNDRY VENT UP THROUGH ROOF. COORDINATE FINAL LOCATIONS WITH ARCHITECT.
 5. LINEAR AIR DEVICE IN SIDEWALL WITH PLENUM. TAP OFF MAIN WITH DAMPER AND CONNECT TO BOTTOM OF LINEAR AIR DEVICE PLENUM. COORDINATION ELEVATION AND FINISH COLOR OF AIR DEVICE WITH ARCHITECT.
 6. INSTALL WALL HUNG AC3 BELOW CABLE TRAY ON WEST WALL OF IT ROOM. TOP OF UNIT SHALL BE 6'-0" A.F.F.
 7. INSTALL WALL HUNG AC2 ABOVE DOOR ON SOUTH WALL OF IT ROOM.
 8. 20/20 UP TO KITCHEN HOOD EXHAUST FAN EF5 ON ROOF. PROVIDE GREASE DUCT CLEANOUT AT BOTTOM OF VERTICAL. PROVIDE GREASE TRAP.
 9. 16/10 UP TO EXHAUST FAN EF6 ON ROOF.
 10. 12/12 UP TO EXHAUST FAN EF7 ON ROOF.
 11. PROVIDE PANT LEG DUCT FITTING. LEGS SHALL BE 16/6. MAKE CONNECTION TO (2) CONNECTIONS ON TOP OF DISHWASHER.
 12. PROVIDE TAPS OFF EXHAUST MAIN TO CONNECT TO (2) 13/14 CONNECTIONS ON GREASE HOOD. PROVIDE GREASE DUCT CLEANOUTS AT TAPS.
 13. PROVIDE MOTORIZED DAMPER AND BALANCE DAMPER. BALANCE TO 800 CFM. MOTORIZED DAMPER TO REMAIN CLOSED DURING KITCHEN OPERATION. OPEN WHEN HOOD IS NOT IN OPERATION.
 14. 24/24 TRANSFER DUCT.
 15. TERMINATE KILN EXHAUST DUCT THROUGH EXTERIOR WALL. PROVIDE CORROSION RESISTANT ALUMINUM ROUND DUCT WALL CAP WITH INTEGRAL ALUMINUM BACKDRAFT DAMPER. PAINT WALL CAP TO MATCH ADJACENT EXTERIOR FINISH. COORDINATE EXACT LOCATION WITH ARCHITECT.
 16. BELLMOUTH OPENING FOR RETURN AIR PLENUM.
 17. 16/10 UP TO EXHAUST FAN EF4 ON ROOF.
 18. UP TO RTU5.
 19. PROVIDE CABLE OPERATED DAMPER FOR ACCESS.
 20. PROVIDE SHEETMETAL PLENUM BEHIND LOUVER.

A FLOOR PLAN
 FIRST FLOOR - AREA A
 SCALE: 1/8" = 1'-0"
 0" 1" 2" 4" 8"

| # | DATE | CHANGE DESCRIPTION |
|---|------------|-----------------------|
| 1 | 11/12/2021 | ADDENDUM 1 - INTERIOR |
| 2 | 11/17/2021 | ADDENDUM 2 - INTERIOR |

The Greater Dayton School
 Dewitt Park Dr
 DAYTON, OH 45404
 FOR

The Connor Group Kids & Community Partners

300 SPRUCE STREET
 SUITE 300
 COLUMBUS, OHIO 43215

PHONE: (614) 461-4664
 FAX: (614) 280-8881

DRAWING TITLE:
HVAC FIRST FLOOR PLAN AREA A

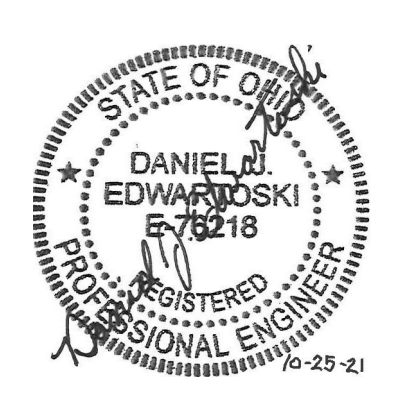
10/25/21
 DRAWN BY: KORDA CHECKED BY: KORDA
 Proj. # 18187

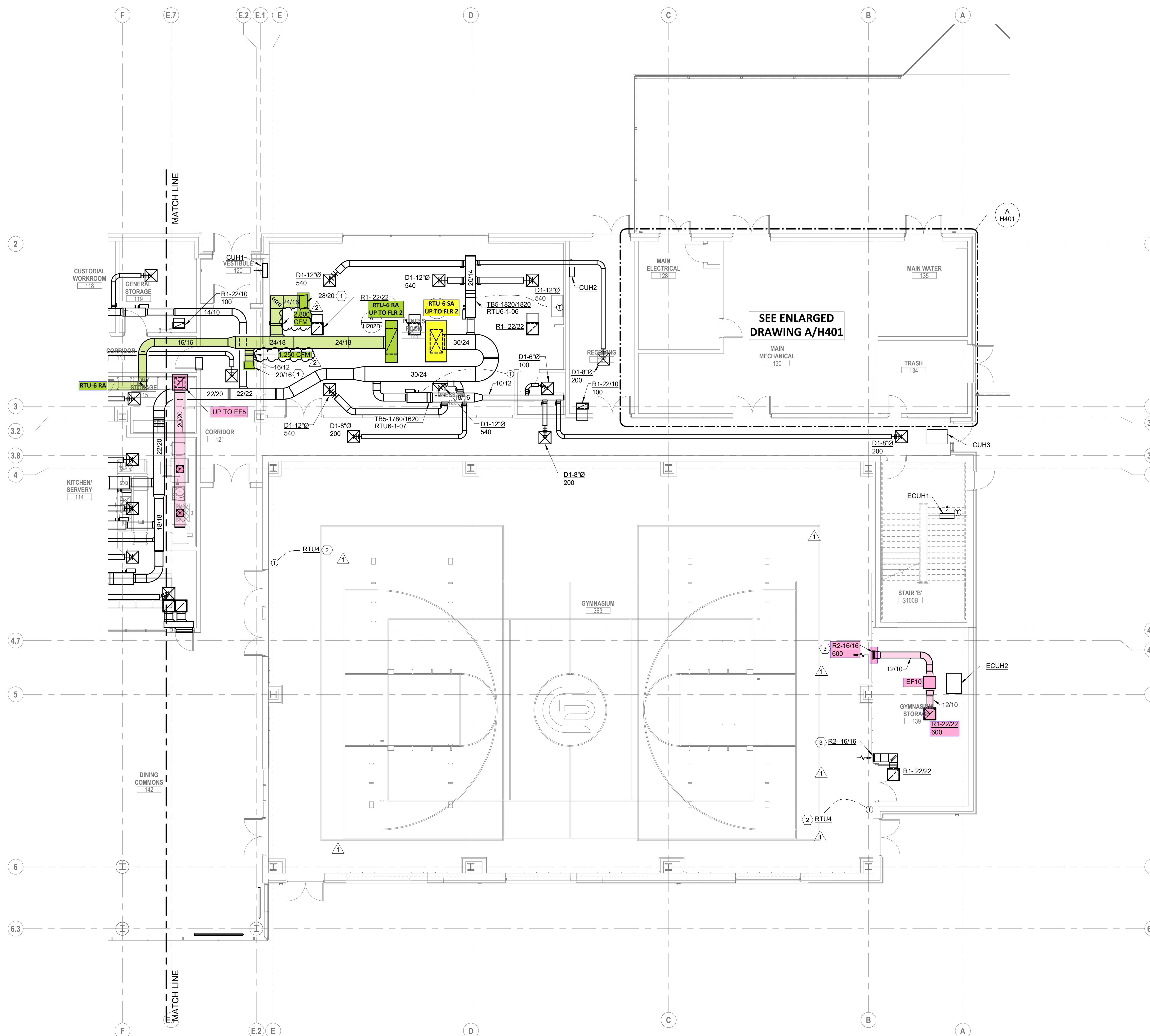
H201A

INTERIOR PACKAGE
 CONSTRUCTION DOCUMENTS

KORDA
 KORDA NEMETH ENGINEERING
 1650 WATERMARK DRIVE
 SUITE 200
 COLUMBUS, OHIO 43215

DRAWN BY: Dave Bach
 DESIGNED BY: Dan Edwards
 CHECKED BY: Dan Edwards
 PROJECT NUMBER: 2018-217





- CODED NOTES:**
- BELLMOUTH OPENING FOR RETURN AIR PLENUM.
 - INSTALL TEMPERATURE SENSOR BOTTOM OF DEVICE 80" A.F.F. COORDINATE LOCATION OF SENSOR WITH ARCHITECTURAL ELEVATIONS. INSTALL CONDUIT IN WALL. EXPOSED CONDUIT IS NOT ACCEPTABLE.
 - COORDINATE LOCATION OF SIDEWALL GRILLE WITH ARCHITECTURAL ELEVATIONS.

A FLOOR PLAN
 FIRST FLOOR - AREA B
 SCALE: 1/8" = 1'-0"
 0" 1" 2" 4" 8"

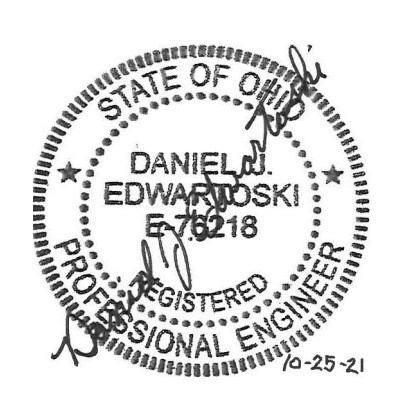
| # | DATE | CHANGE DESCRIPTION |
|---|------------|-----------------------|
| 1 | 11/12/2021 | ADDENDUM 1 - INTERIOR |
| 2 | 11/17/2021 | ADDENDUM 2 - INTERIOR |

The Greater Dayton School
 2000 Park Dr.
 DAYTON, OH 45404
 FOR
The Connor Group Kids & Community Partners

MOODY-NOLAN
 300 SPRUCE STREET
 SUITE 300
 COLUMBUS, OHIO 43215
 PHONE: (614) 461-4664
 FAX: (614) 280-8881

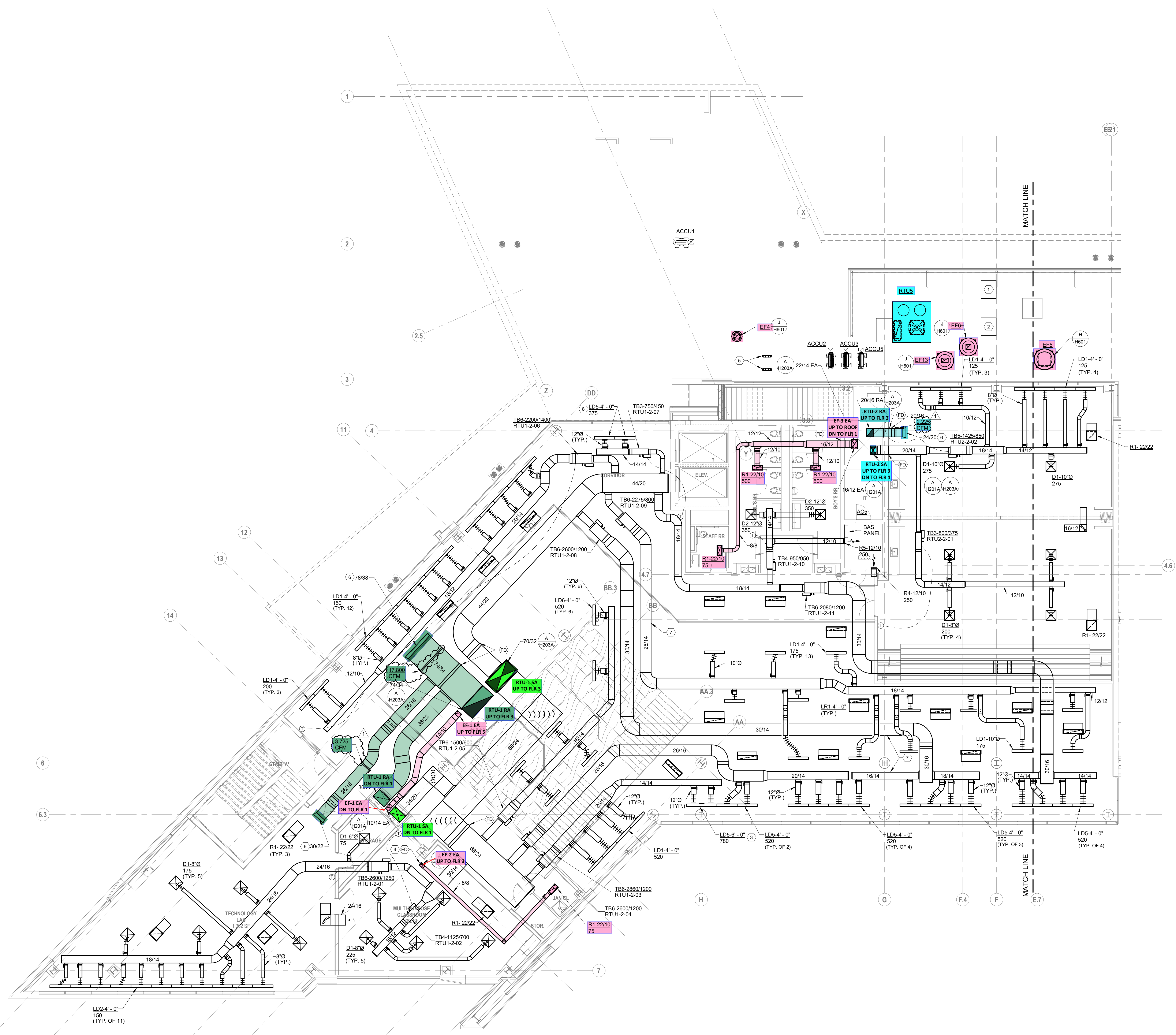
DRAWING TITLE:
**HVAC FIRST FLOOR PLAN
 AREA B**

KORDA
 KORDA, NEMETH ENGINEERING
 1650 WATERMARK DRIVE
 SUITE 200
 COLUMBUS, OHIO 43215
 DRAWN BY: Dave Blach
 DESIGNED BY: Dave Edwards/Blach
 CHECKED BY: Eric Swenson
 PROJECT NUMBER: 2018-217

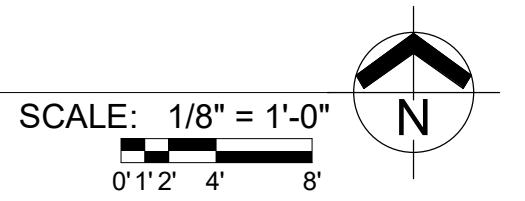


| | |
|--|-------------------|
| 10/25/21 | CHECKED BY: KORDA |
| 10/25/21 | DRAWN BY: KORDA |
| Proj. # 18187 | |
| H201B | |
| INTERIOR PACKAGE CONSTRUCTION DOCUMENTS | |

- CODED NOTES:**
1. WALK IN FREEZER CONDENSING UNIT BY KITCHEN EQUIPMENT CONTRACTOR. LOCATION SHOWN FOR COORDINATION WITH MECHANICAL EQUIPMENT.
 2. WALK IN COOLER CONDENSING UNIT BY KITCHEN EQUIPMENT CONTRACTOR. LOCATION SHOWN FOR COORDINATION WITH MECHANICAL EQUIPMENT.
 3. SINGLE LINEAR DEVICE WITH TWO 12" TAPS INTO PLENUM.
 4. LOCATE FIRE DAMPER IN DUCT AT BOTTOM OF SHAFT.
 5. TERMINATE LAUNDRY VENT WITH GOOSENECK AND BIRDSCREEN. MINIMUM 18" ABOVE FINISHED ROOF.
 6. BELLMOUTH OPENING FOR RETURN AIR PLENUM.
 7. ALL EXPOSED DUCTWORK ABOVE BAFFLE AND CLOUD CEILINGS TO BE PAINTED. FINISH COLOR TO BE COORDINATED WITH ARCHITECT.
 8. PROVIDE CABLE OPERATED DAMPER FOR ACCESS.



A FLOOR PLAN
SECOND FLOOR - AREA A



| # | DATE | CHANGE DESCRIPTION |
|---|------------|-----------------------|
| 1 | 11/17/2021 | ADDENDUM 2 - INTERIOR |

The Greater Dayton School
Dwight Park Dr.
DAYTON, OH 45404
FOR

The Connor Group Kids & Community Partners

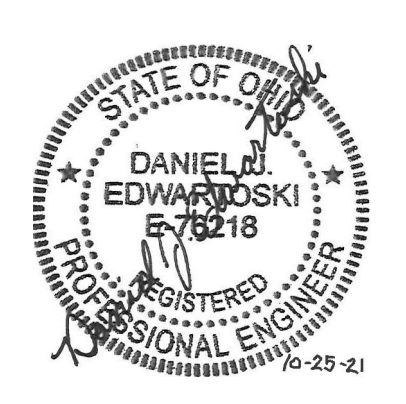
300 SPRUCE STREET
SUITE 300
COLUMBUS, OHIO 43215

PHONE: (614) 461-4664
FAX: (614) 280-8881

DRAWING TITLE:
**HVAC SECOND FLOOR PLAN
AREA A**

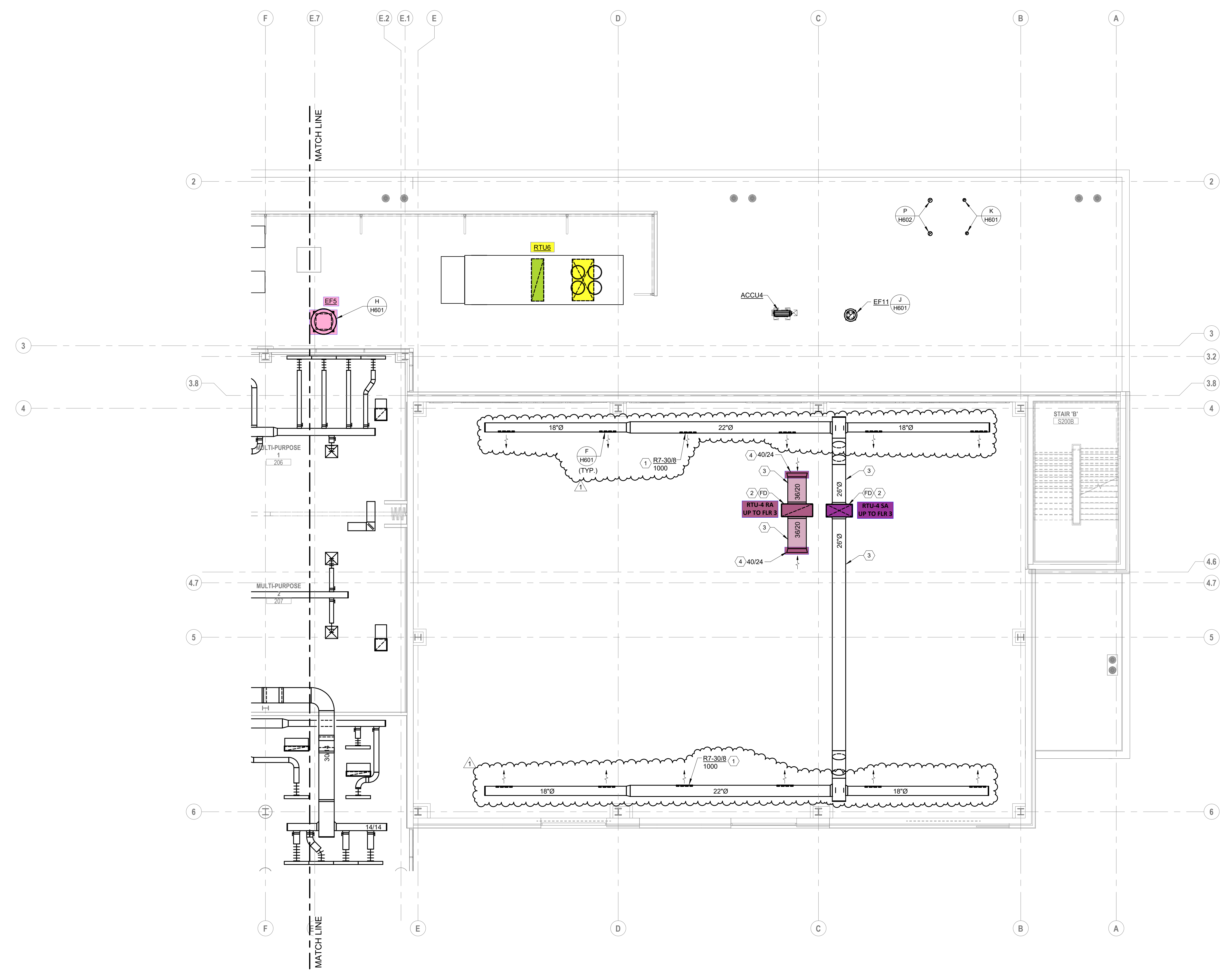
KORDA
KORDA NEMETH ENGINEERING
1650 WATERMARK DRIVE
SUITE 200
COLUMBUS, OHIO 43215

DESIGNED BY: Dan Edwards
CHECKED BY: Eric Swenson
PROJECT NUMBER: 2018-217



| | | |
|--|-----------------|-------------------|
| 10/25/21 | DRAWN BY: KORDA | CHECKED BY: KORDA |
| Proj. # 18187 | | |
| H202A | | |
| INTERIOR PACKAGE CONSTRUCTION DOCUMENTS | | |

- CODED NOTES:**
1. ANGLE AIR FLOW 45 DEGREES DOWNWARD TOWARD CENTER OF GYMNASIUM. COORDINATE AIR DEVICES WITH SUSPENDED LIGHTING DEVICES ARE TO BE LOCATED SUCH THAT AIR IS NOT DIRECTLY ON LIGHTING.
 2. LOCATE FIRE DAMPER IN VERTICAL DUCT AT SHAFT PENETRATION.
 3. ROUTE DUCTWORK TIGHT TO UNDERSIDE OF DECK AND BETWEEN BEAMS.
 4. BELLMOUTH OPENING FOR RETURN AIR PLENUM.



A FLOOR PLAN
SECOND FLOOR - AREA B

SCALE: 1/8" = 1'-0"
0' 1" 2" 4" 8"

| # | DATE | CHANGE DESCRIPTION |
|---|------------|-----------------------|
| 1 | 11/12/2021 | ADDENDUM 1 - INTERIOR |
| | | |
| | | |

The Greater Dayton School
Dwight Park Ct.
DAYTON, OH 45404
FOR

The Connor Group Kids & Community Partners

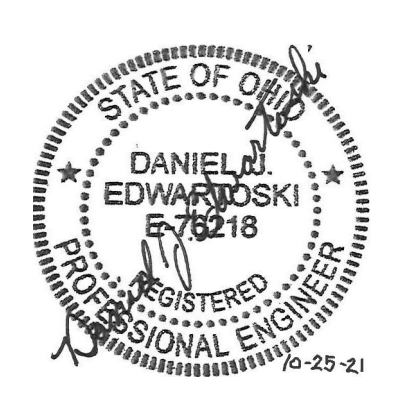
300 SPRUCE STREET
SUITE 300
COLUMBUS, OHIO 43215
PHONE: (614) 461-4664
FAX: (614) 280-8881

DRAWING TITLE:
**HVAC SECOND FLOOR PLAN
AREA B**

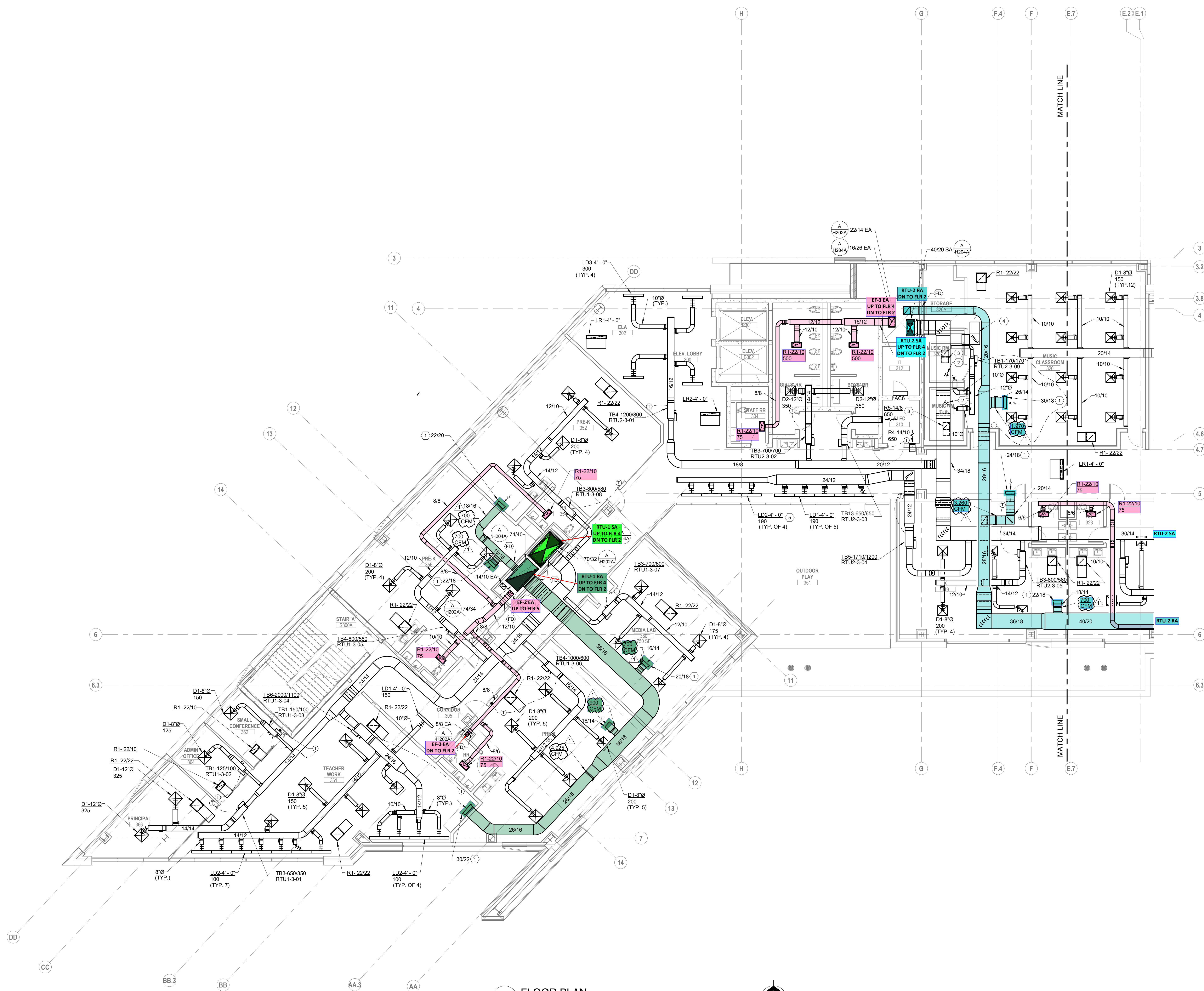
| | |
|--|-------------------|
| 10/25/21 | CHECKED BY: KORDA |
| 10/25/21 | DRAWN BY: KORDA |
| Proj. # 18187 | |
| H202B | |
| INTERIOR PACKAGE CONSTRUCTION DOCUMENTS | |

KORDA
KORDA, NEMETH ENGINEERING
1650 WATERMARK DRIVE
SUITE 200
COLUMBUS, OHIO 43215

DESIGNED BY: Dave Edwarick
CHECKED BY: Eric Swanson
PROJECT NUMBER: 2018-217



- CODED NOTES:**
- BELLMOUTH OPENING FOR RETURN AIR PLENUM.
 - 8" DIAMETER FLEX CONNECTION TO WENGER SOUND BOOTH. BALANCE NORTH BOOTH 320CFM. BALANCE SOUTH BOOTH 3208 TO 105 CFM. COORDINATE EXACT LOCATIONS WITH EQUIPMENT.
 - 8" DIAMETER RETURN DUCT CONNECTION TO WENGER SOUND BOOTH. TRANSITION TO 16" RECTANGULAR RETURN BOOT WITH INTERNAL LINING. COORDINATE EXACT LOCATIONS WITH EQUIPMENT.
 - 24" RETURN TRANSFER DUCT.
 - PROVIDE CABLE OPERATED DAMPER FOR ACCESS.



A FLOOR PLAN
THIRD FLOOR - AREA A

SCALE: 1/8" = 1'-0"
0" 1/2" 1" 2" 4" 8"

| # | DATE | CHANGE DESCRIPTION |
|---|------------|-----------------------|
| 1 | 11/17/2021 | ADDENDUM 2 - INTERIOR |

The Greater Dayton School
Dwight Park Ct.
DAYTON, OH 45404
FOR

The Connor Group Kids & Community Partners

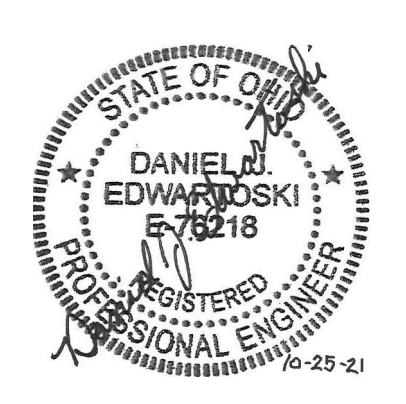
300 SPRUCE STREET
SUITE 300
COLUMBUS, OHIO 43215

PHONE: (614) 461-4664
FAX: (614) 280-8881

HVAC THIRD FLOOR PLAN
AREA A

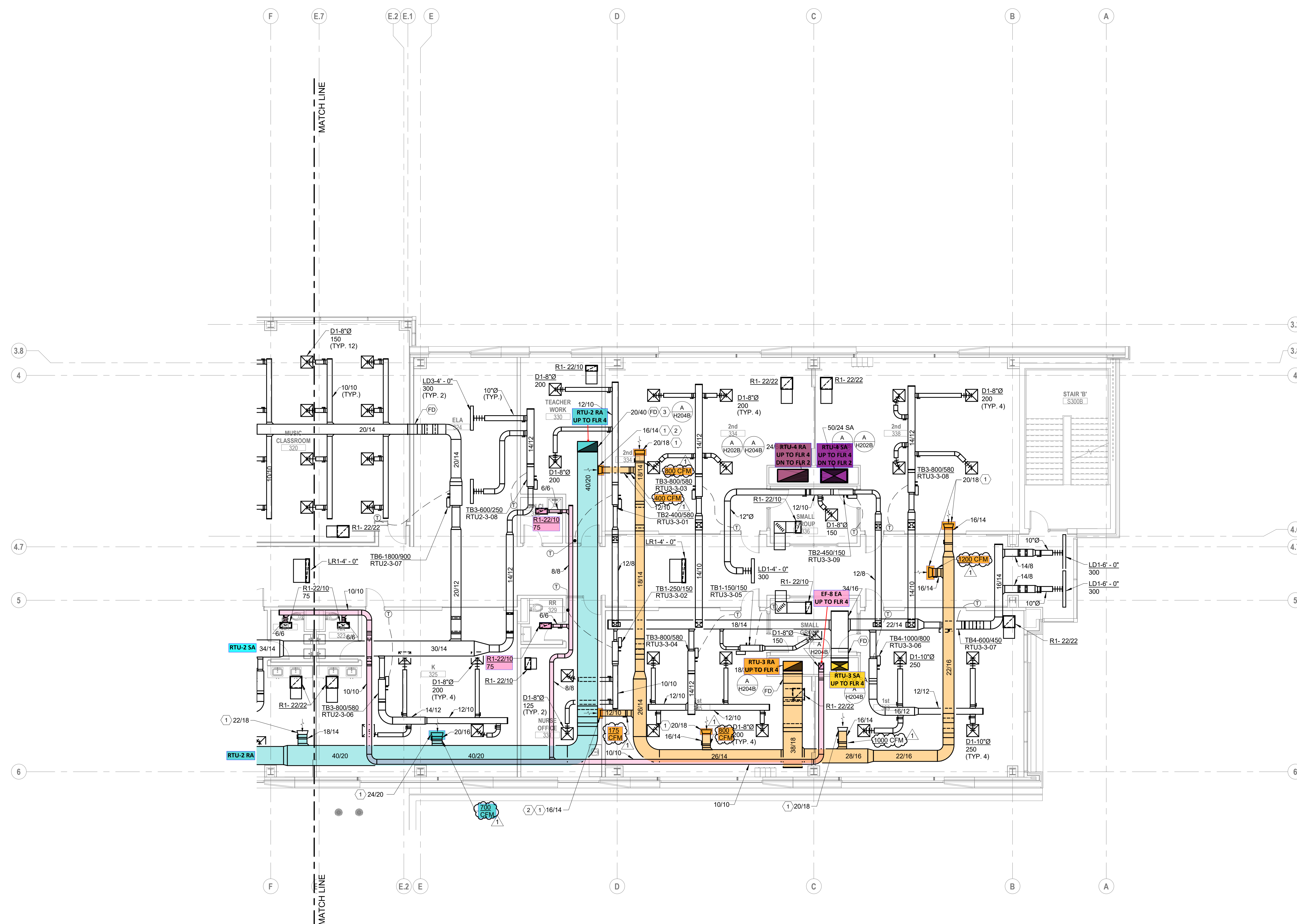
KORDA
KORDA NEMETH ENGINEERING
1650 WATERMARK DRIVE
SUITE 200
COLUMBUS, OHIO 43215

DESIGNED BY: Dan Edwards
CHECKED BY: Eric Swanson
PROJECT NUMBER: 2018-217

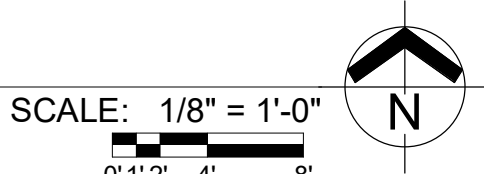


| | |
|------------------------|-------------------|
| 10/25/21 | CHECKED BY: KORDA |
| Proj. # 18187 | |
| H203A | |
| INTERIOR PACKAGE | |
| CONSTRUCTION DOCUMENTS | |

- CODED NOTES:**
- BELLMOUTH OPENING FOR RETURN AIR PLENUM.
 - PROVIDE CLEARANCE FOR FULL OPENING OF TRANSFER DUCT.
 - LOCATE FIRE DAMPER IN DUCT PENETRATION AT BOTTOM OF RATED SHAFT.



A FLOOR PLAN
THIRD FLOOR - AREA B



| # | DATE | CHANGE DESCRIPTION |
|---|------------|-----------------------|
| 1 | 11/17/2021 | ADDENDUM 2 - INTERIOR |

The Greater Dayton School
Dwight Park Dr.
DAYTON, OH 45404
FOR

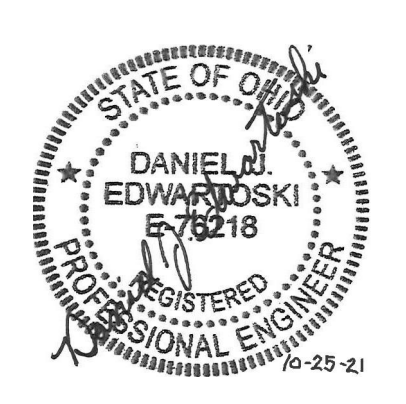
The Connor Group Kids & Community Partners

MOODY-NOLAN
300 SPRUCE STREET
SUITE 300
COLUMBUS, OHIO 43215
PHONE: (614) 461-4664
FAX: (614) 280-8881

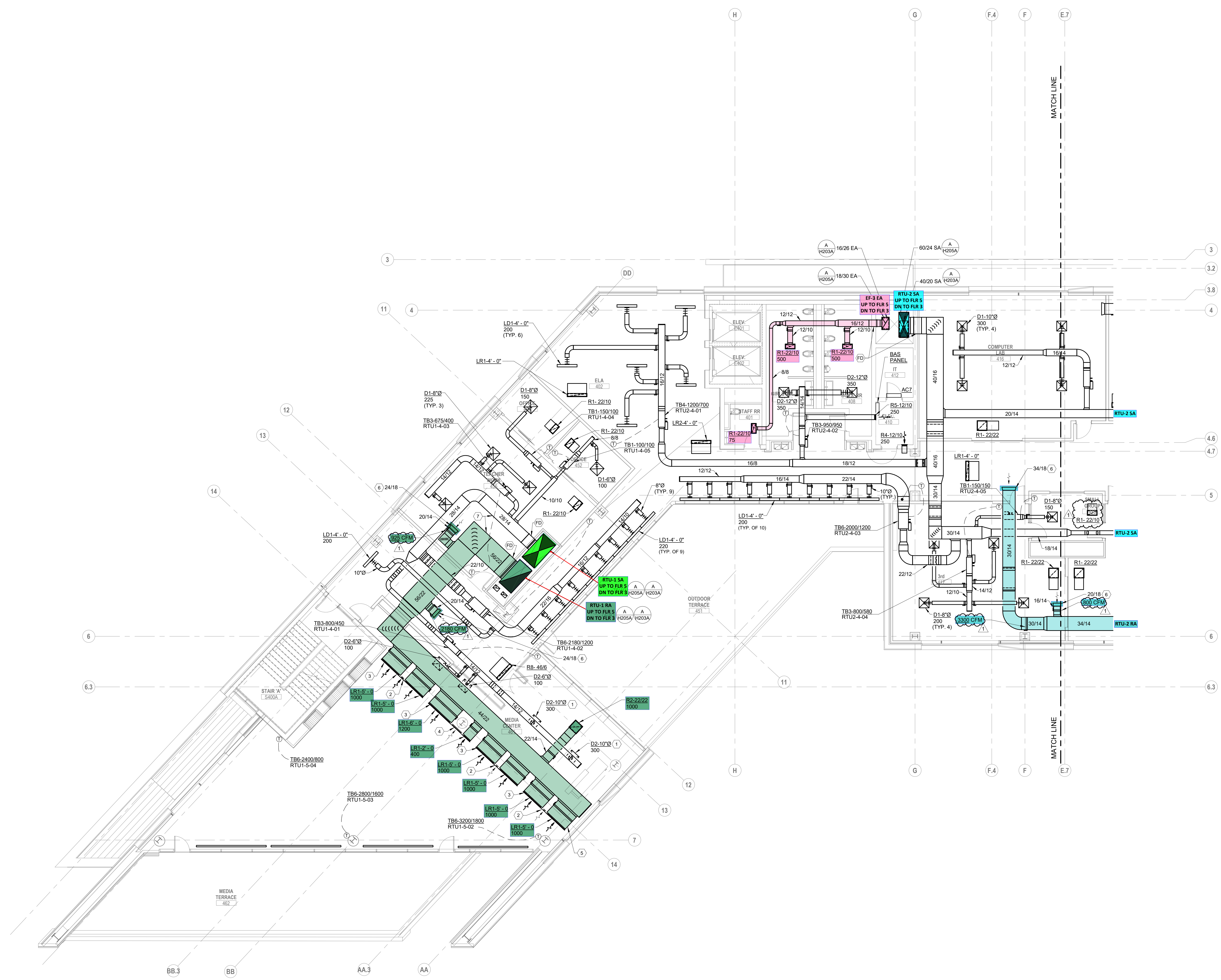
DRAWING TITLE:
**HVAC THIRD FLOOR PLAN
AREA B**

| | |
|--|-------------------|
| 10/25/21 | CHECKED BY: KORDA |
| Proj. # 18187 | |
| H203B | |
| INTERIOR PACKAGE CONSTRUCTION DOCUMENTS | |

KORDA
KORDA, NEMETH ENGINEERING
1650 WATERMARK DRIVE
SUITE 200
COLUMBUS, OHIO 43215
DRAWN BY: Dave Bach
DESIGNED BY: Dan Edwards
CHECKED BY: Eric Swanson
PROJECT NUMBER: 2018-217



- CODED NOTES:**
1. LOCATE TAP AND DAMPER AT UNDERSIDE OF DUCT.
 2. PROVIDE A 1'-0" INACTIVE SECTION AND BLANK OFF.
 3. PROVIDE BORDERS AND ACCESSORIES REQUIRED FOR A CONTINUOUS, SEAMLESS LOOK THROUGH ACTIVE AND INACTIVE SECTIONS.
 4. PROVIDE A 1'-0" INACTIVE SECTION AND BLANK OFF. COORDINATE WITH STRUCTURAL COLUMN.
 5. COORDINATE ELEVATION OF AIR DEVICES WITH ARCHITECT. TYPICAL.
 6. BELLMOUTH OPENING FOR RETURN AIR PLENUM.
 7. PROVIDE DOUBLE-WALL ACOUSTICAL DUCT PER SPECIFICATIONS.



A FLOOR PLAN
 FOURTH FLOOR - AREA A
 SCALE: 1/8" = 1'-0"
 0' 1" 2' 4' 8'

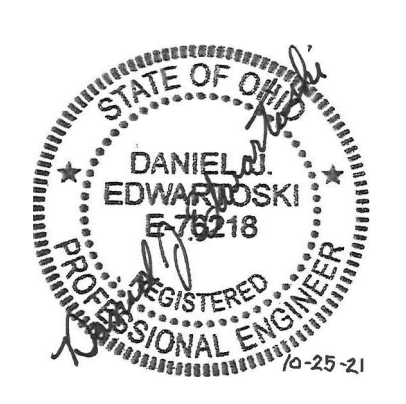
| # | DATE | CHANGE DESCRIPTION |
|---|------------|-----------------------|
| 1 | 11/17/2021 | ADDENDUM 2 - INTERIOR |

The Greater Dayton School
 300 SPRUCE STREET
 SUITE 300
 COLUMBUS, OHIO 43215
 PHONE: (614) 461-4664
 FAX: (614) 280-8881

The Connor Group Kids & Community Partners

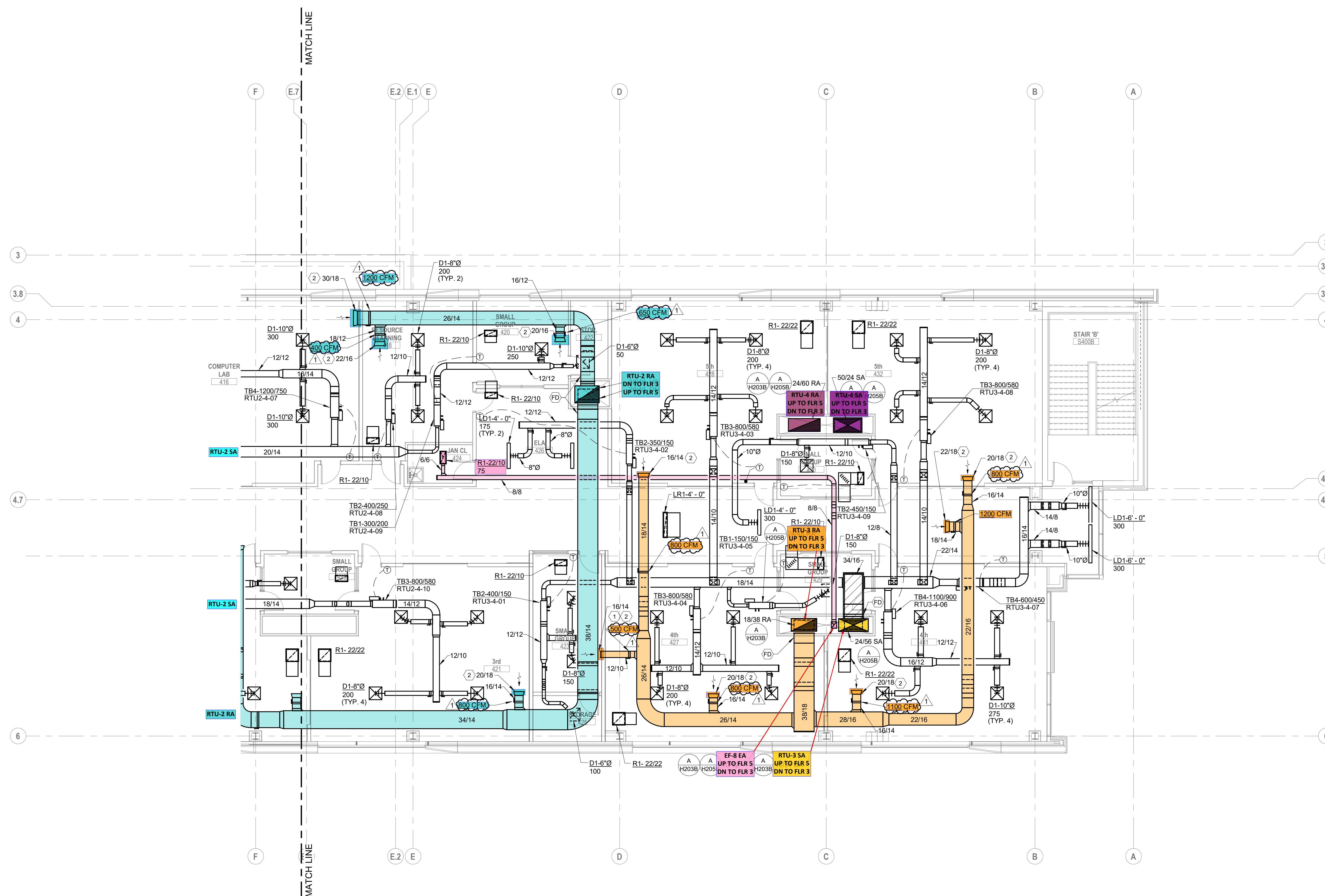
DRAWING TITLE:
 HVAC FOURTH FLOOR PLAN
 AREA A

KORDA
 KORDA NEMETH ENGINEERING
 1650 WATERMARK DRIVE
 SUITE 200
 COLUMBUS, OHIO 43215
 DESIGNED BY: Dave Edwards
 CHECKED BY: Eric Swenson
 PROJECT NUMBER: 2018-217



| | | |
|--|-----------------|-------------------|
| 10/25/21 | DRAWN BY: KORDA | CHECKED BY: KORDA |
| Proj. # 18187 | | |
| H204A | | |
| INTERIOR PACKAGE CONSTRUCTION DOCUMENTS | | |

- CODED NOTES:**
1. PROVIDE CLEARANCE FOR FULL OPENING OF TRANSFER DUCT.
 2. BELLMOUTH OPENING FOR RETURN AIR PLENUM.



A FLOOR PLAN
FOURTH FLOOR - AREA B

SCALE: 1/8" = 1'-0"
0" 1" 2" 4" 8"

| # | DATE | CHANGE DESCRIPTION |
|---|------------|-----------------------|
| 1 | 11/17/2021 | ADDENDUM 2 - INTERIOR |

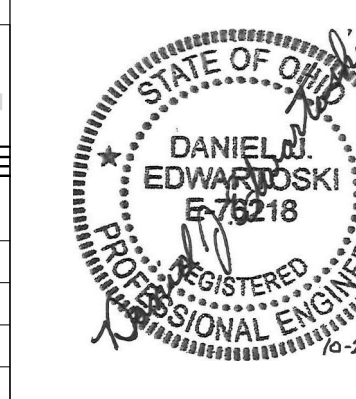
The Greater Dayton School
Dwight Park Dr.
DAYTON, OH 45404
FOR

The Connor Group Kids & Community Partners

300 SPRUCE STREET
SUITE 300
COLUMBUS, OHIO 43215
PHONE: (614) 461-4664
FAX: (614) 280-8881

DRAWING TITLE:
**HVAC FOURTH FLOOR PLAN
AREA B**

KORDA
KORDA, NEMETH ENGINEERING
1650 WATERMARK DRIVE
SUITE 200
COLUMBUS, OHIO 43215
DRAWN BY: Dave Blach
DESIGNED BY: Dan Edmister
CHECKED BY: Eric Swanson
PROJECT NUMBER: 2018-217

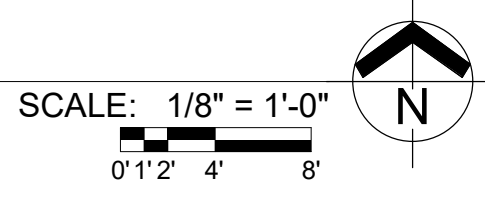


10/25/21
DRAWN BY: KORDA CHECKED BY: KORDA
Proj. # 18187
H204B
INTERIOR PACKAGE
CONSTRUCTION DOCUMENTS



- CODED NOTES:
1. PROVIDE CABLE OPERATED DAMPER FOR ACCESS.
 2. WALL SWITCH FOR MANUAL EXHAUST FAN CONTROL.
 3. BELLMOUTH OPENING FOR RETURN AIR PLENUM.
 4. PROVIDE DOUBLE-WALL ACOUSTICAL DUCT PER SPECIFICATIONS.
 5. PROVIDE CLEARANCE FOR FULL OPENING OF TRANSFER DUC.
 6. PROVIDE $\Delta 69$ TEMPERATURE SENSOR IN RETURN DUCT.

A FLOOR PLAN
FIFTH FLOOR - AREA A



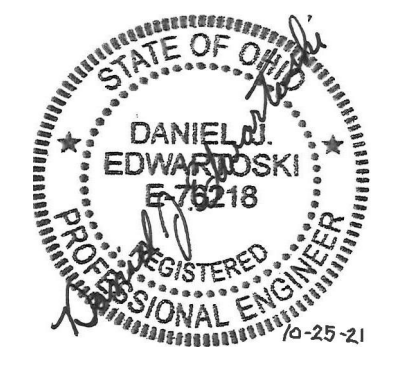
| # | DATE | CHANGE DESCRIPTION |
|---|------------|-----------------------|
| 1 | 11/12/2021 | ADDENDUM 1 - INTERIOR |
| 2 | 11/17/2021 | ADDENDUM 2 - INTERIOR |

The Greater Dayton School
Dwight Park City
DAYTON, OH 45404
FOR
The Connor Group Kids & Community Partners

MOODY-NOLAN
300 SPRUCE STREET
SUITE 300
COLUMBUS, OHIO 43215
PHONE: (614) 461-4664
FAX: (614) 280-8881

DRAWING TITLE:
**HVAC FIFTH FLOOR PLAN
AREA A**

KORDA
KORDA NEMETH ENGINEERING
1650 WATERMARK DRIVE
SUITE 200
COLUMBUS, OHIO 43215
DESIGNED BY: Dave Edwards
CHECKED BY: Eric Swanson
PROJECT NUMBER: 2018-217



| | | |
|--|-----------------|-------------------|
| 10/25/21 | DRAWN BY: KORDA | CHECKED BY: KORDA |
| Proj. # 18187 | | |
| H205A | | |
| INTERIOR PACKAGE CONSTRUCTION DOCUMENTS | | |

- CODED NOTES:**
- BELLMOUTH OPENING FOR RETURN AIR PLENUM
 - PROVIDE DOUBLE-WALL ACOUSTICAL DUCT PER SPECIFICATIONS.



A FLOOR PLAN
FIFTH FLOOR - AREA B

SCALE: 1/8" = 1'-0"
0" 1" 2" 4" 6"

| # | DATE | CHANGE DESCRIPTION |
|---|------------|-----------------------|
| 1 | 11/12/2021 | ADDENDUM 1 - INTERIOR |
| 2 | 11/17/2021 | ADDENDUM 2 - INTERIOR |

The Greater Dayton School
Dwight Park Dr.
DAYTON, OH 45404
FOR

The Connor Group Kids & Community Partners

300 SPRUCE STREET
SUITE 300
COLUMBUS, OHIO 43215

PHONE: (614) 461-4664
FAX: (614) 280-8881

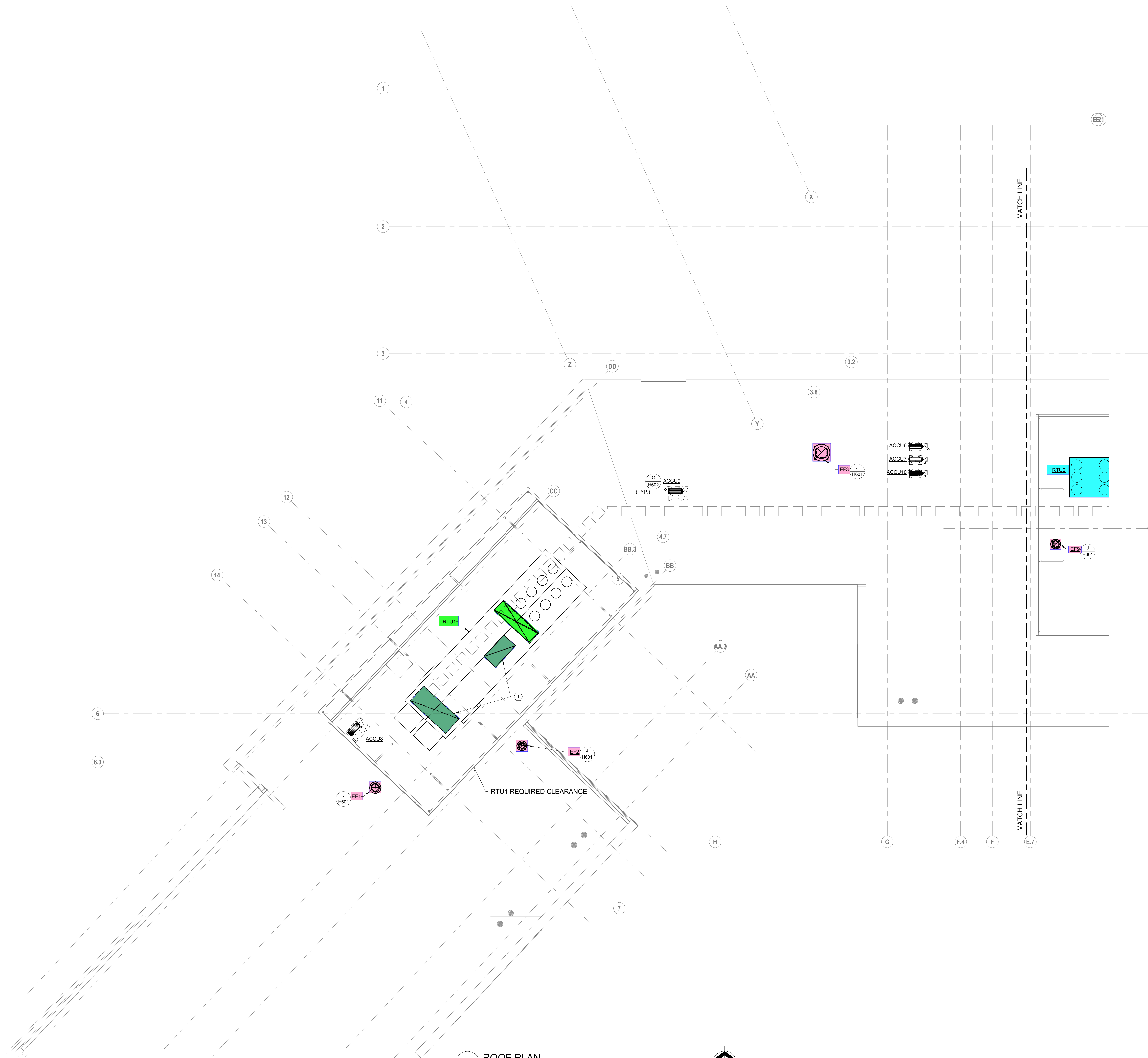
DRAWING TITLE:
**HVAC FIFTH FLOOR PLAN
AREA B**

KORDA
KORDA NEMETH ENGINEERING
1650 WATERMARK DRIVE
SUITE 200
COLUMBUS, OHIO 43215

DESIGNED BY: Dave Blach
CHECKED BY: Eric Stuehmer
PROJECT NUMBER: 2018-217

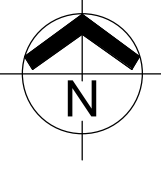
| | |
|--|-------------------|
| 10/25/21 | CHECKED BY: KORDA |
| Proj. # 18187 | |
| H205B | |
| INTERIOR PACKAGE CONSTRUCTION DOCUMENTS | |

- CODED NOTES:
- RETURN PLENUM CURB UNDER ROOFTOP UNIT. RETURN CONNECTION FROM UNIT AND FLOOR BELOW BOTH CONNECT TO PLENUM CURB.



A ROOF PLAN
ROOF - AREA A

SCALE: 1/8" = 1'-0"
0' 1' 2' 4' 8'



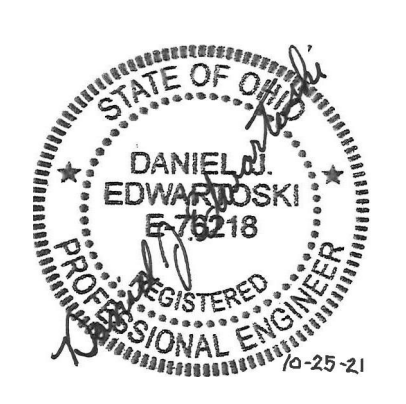
| # | DATE | CHANGE DESCRIPTION |
|---|------|--------------------|
| | | |
| | | |
| | | |
| | | |

The Greater Dayton School
Dwight Park Ct.
DAYTON, OH 45404
FOR
The Connor Group Kids & Community Partners

MOODY-NOLAN
300 SPRUCE STREET
SUITE 300
COLUMBUS, OHIO 43215
PHONE: (614) 461-4664
FAX: (614) 280-8881

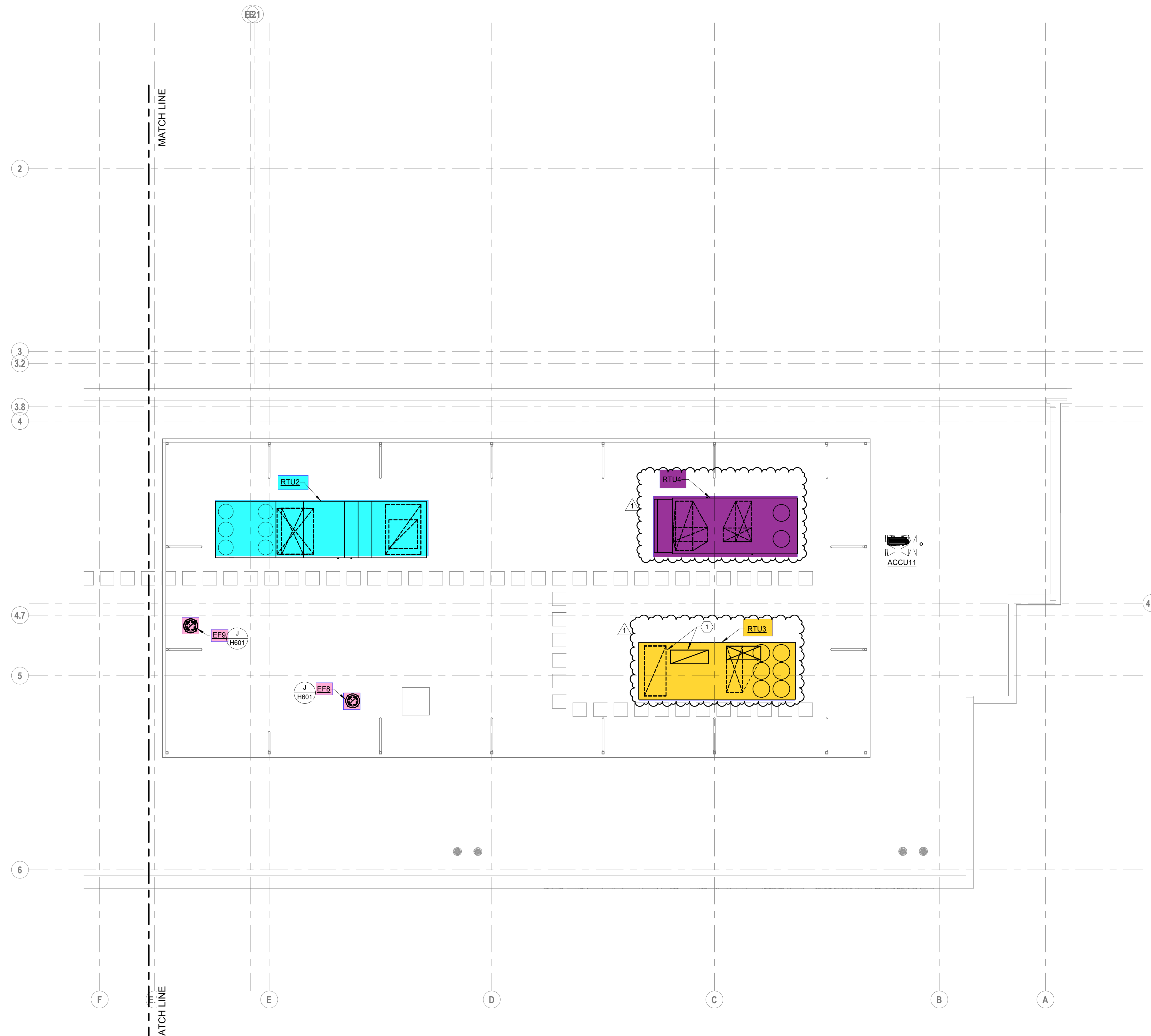
DRAWING TITLE:
HVAC ROOF PLAN AREA A

KORDA
KORDA, NEMETH ENGINEERING
1650 WATERMARK DRIVE
SUITE 200
COLUMBUS, OHIO 43215
DRAWN BY: Dave Blach
DESIGNED BY: Dave Edmister/Blach
CHECKED BY: Eric Swanson
PROJECT NUMBER: 2018-217



10/25/21
DRAWN BY: KORDA CHECKED BY: KORDA
Proj. # 18187
H206A
INTERIOR PACKAGE
CONSTRUCTION DOCUMENTS

- CODED NOTES:**
- RETURN PLENUM CURB UNDER ROOFTOP UNIT. RETURN CONNECTION FROM UNIT AND FLOOR BELOW BOTH CONNECT TO PLENUM CURB.



A ROOF PLAN
ROOF - AREA B

SCALE: 1/8" = 1'-0"
0' 1" 2' 4' 8'

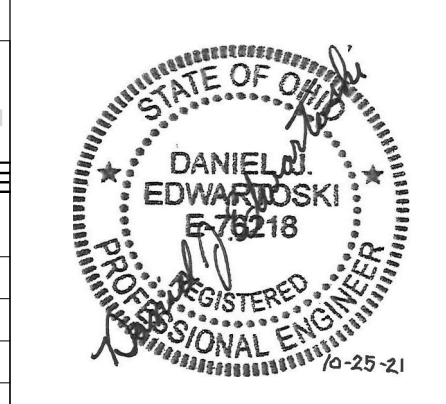
| # | DATE | CHANGE DESCRIPTION |
|---|------------|-----------------------|
| 1 | 11/12/2021 | ADDENDUM 1 - INTERIOR |

The Greater Dayton School
Dwight Park Ct.
DAYTON, OH 45404
FOR
The Connor Group Kids & Community Partners

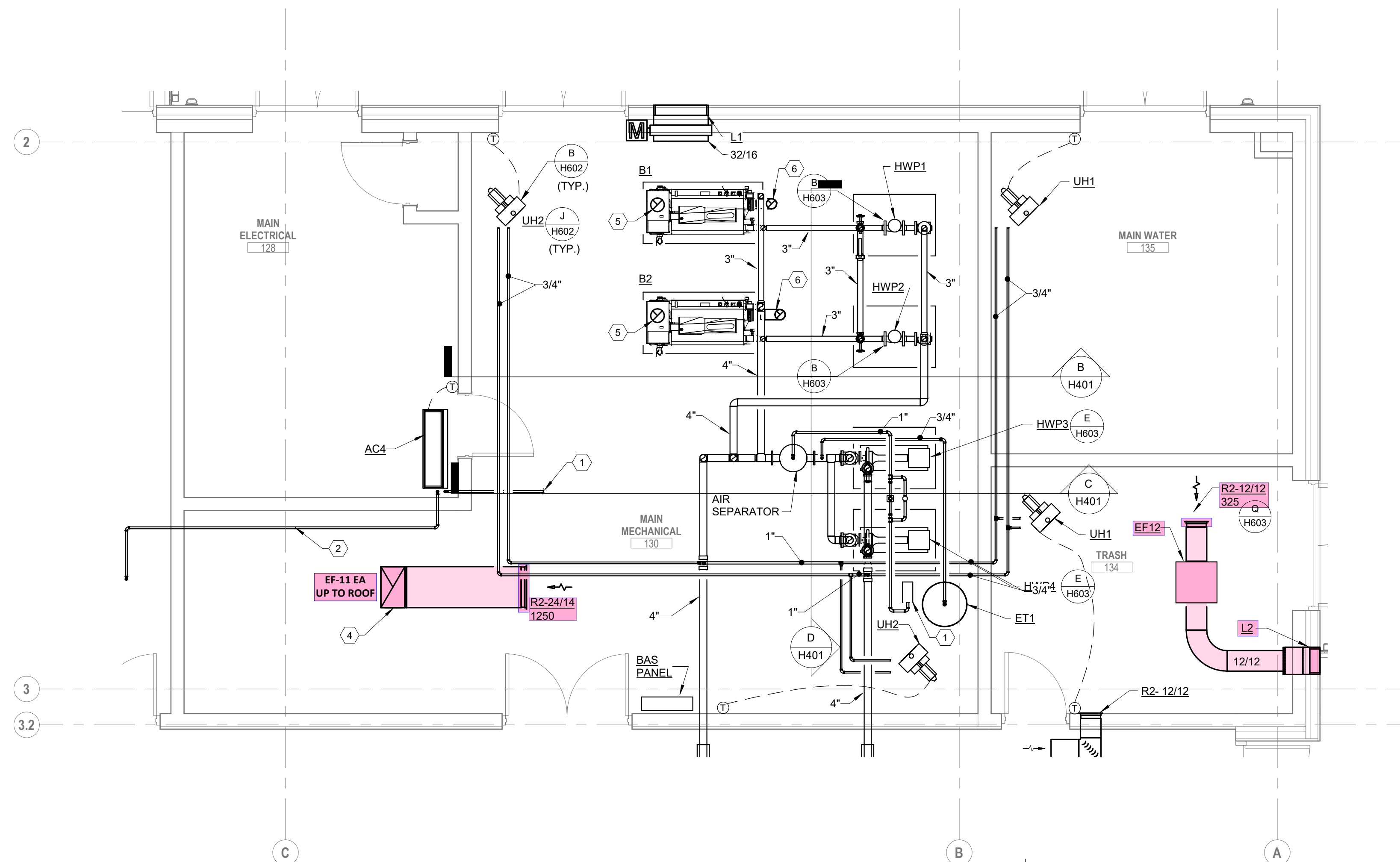
MOODY-NOLAN
300 SPRUCE STREET
SUITE 300
COLUMBUS, OHIO 43215
PHONE: (614) 461-4664
FAX: (614) 280-8881

DRAWING TITLE:
HVAC ROOF PLAN AREA B

KORDA
KORDA, NEMETH ENGINEERING
1650 WATERMARK DRIVE
SUITE 200
COLUMBUS, OHIO 43215
DRAWN BY: Dave Bach
DESIGNED BY: Dave Edwards/Rob
CHECKED BY: Eric Swanson
PROJECT NUMBER: 2018-217

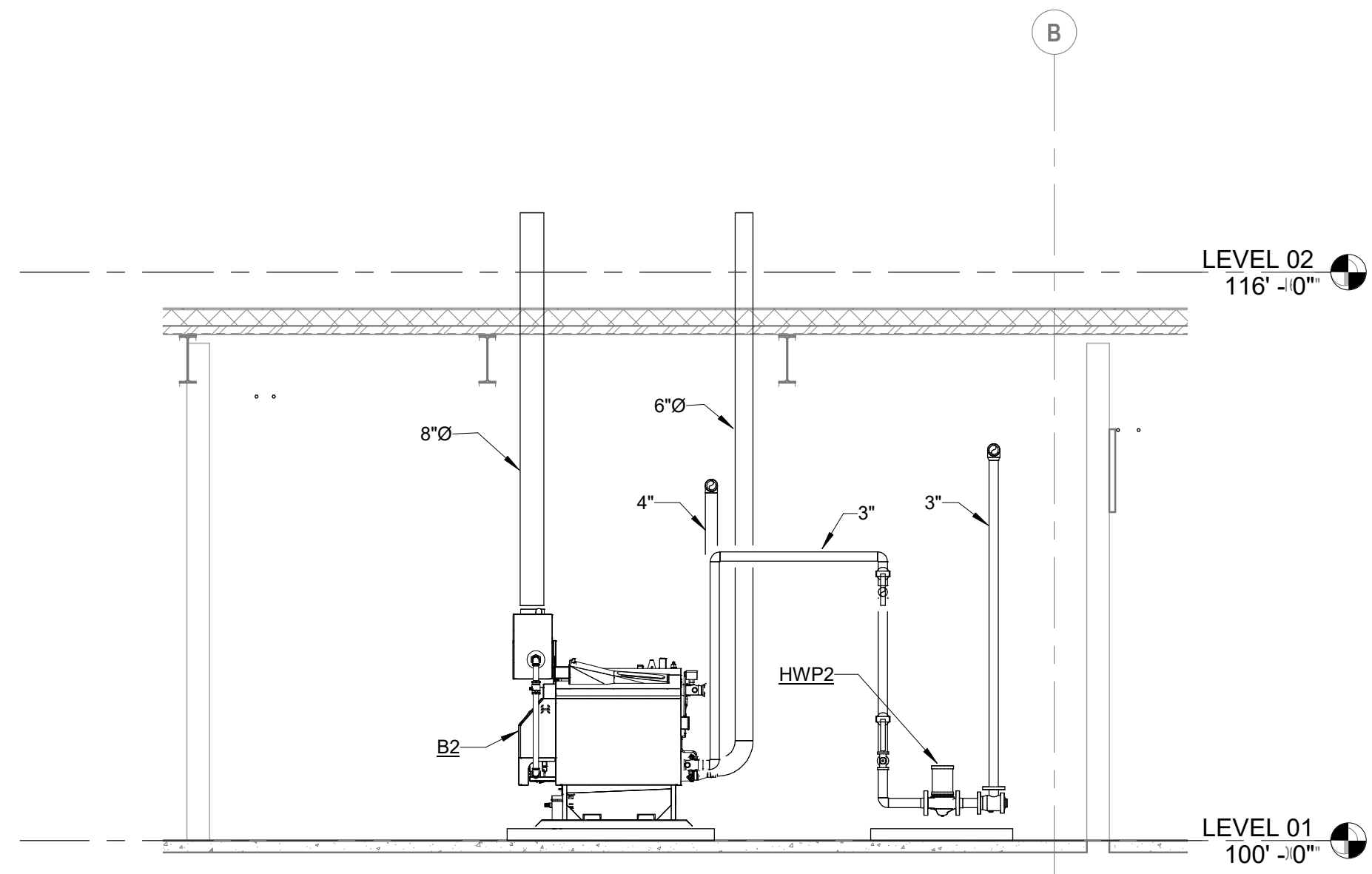


| | | |
|------------------|------------------------|-------------------|
| 10/25/21 | DRAWN BY: KORDA | CHECKED BY: KORDA |
| Proj. # 18187 | | |
| H206B | | |
| INTERIOR PACKAGE | CONSTRUCTION DOCUMENTS | |

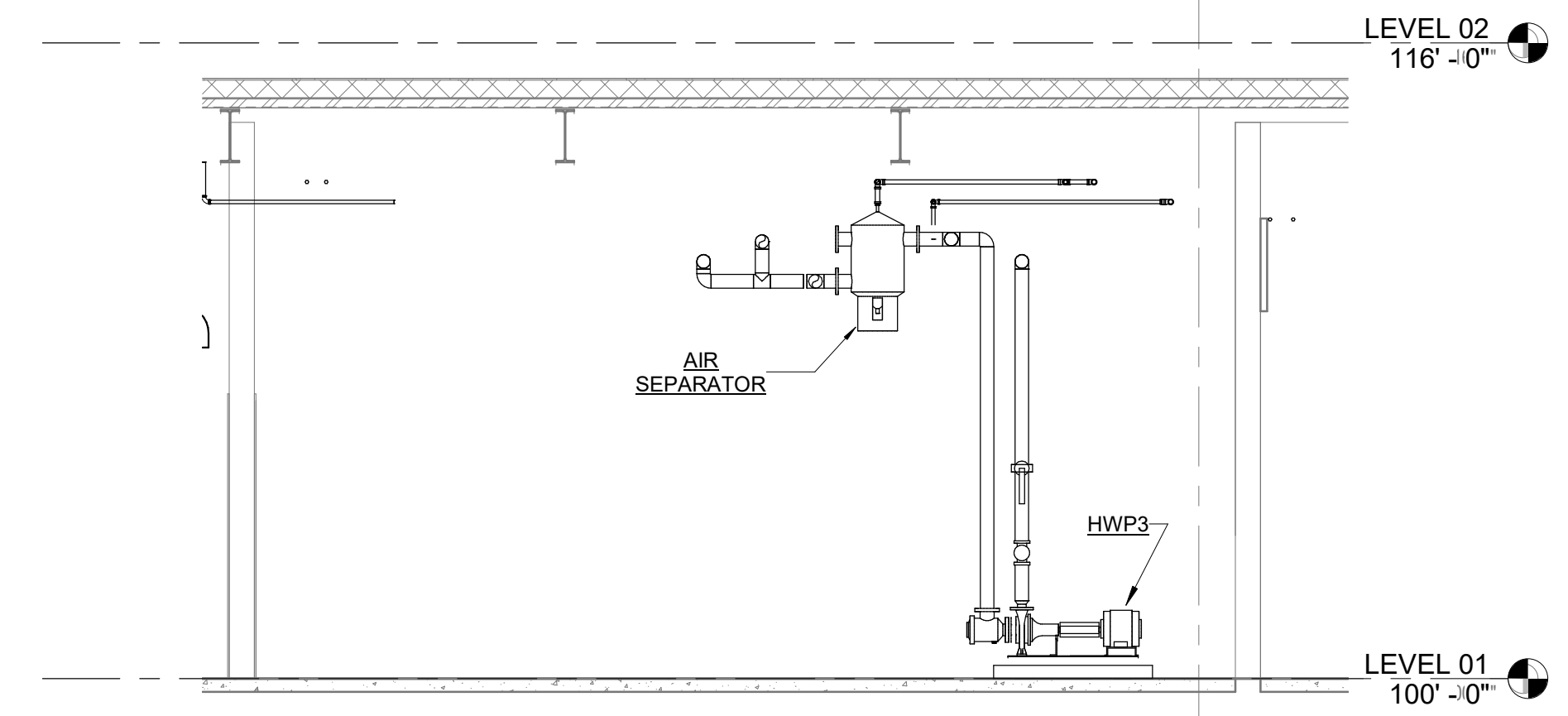


- CODED NOTES:**
1. APPROXIMATE LOCATION OF BACKFLOW PREVENTER BY PLUMBING CONTRACTOR. COORDINATE FINAL LOCATION IN FIELD. ALL PIPING DOWNSTREAM OF BACKFLOW PREVENTER SHALL BE BY THE HVAC CONTRACTOR.
 2. PROVIDE REFRIGERANT LINESET FROM INDOOR UNIT TO OUTDOOR CONDENSER UNIT ON ROOF. SIZE PER MANUFACTURER'S INSTRUCTIONS. SINGLE LINE REPRESENTS BOTH PIPES IN LINESET.
 3. ROUTE 3/4" CONDENSATE DRAIN TO NEAREST FLOOR DRAIN. TERMINATE WITH 2" AIR GAP.
 4. UP TO EF11 ON ROOF.
 5. 8 INCH COMBUSTION AIR UP THROUGH ROOF TO ITAKE GOOSENECK.
 6. 6 INCH BOILER FLUE UP THROUGH ROOF.

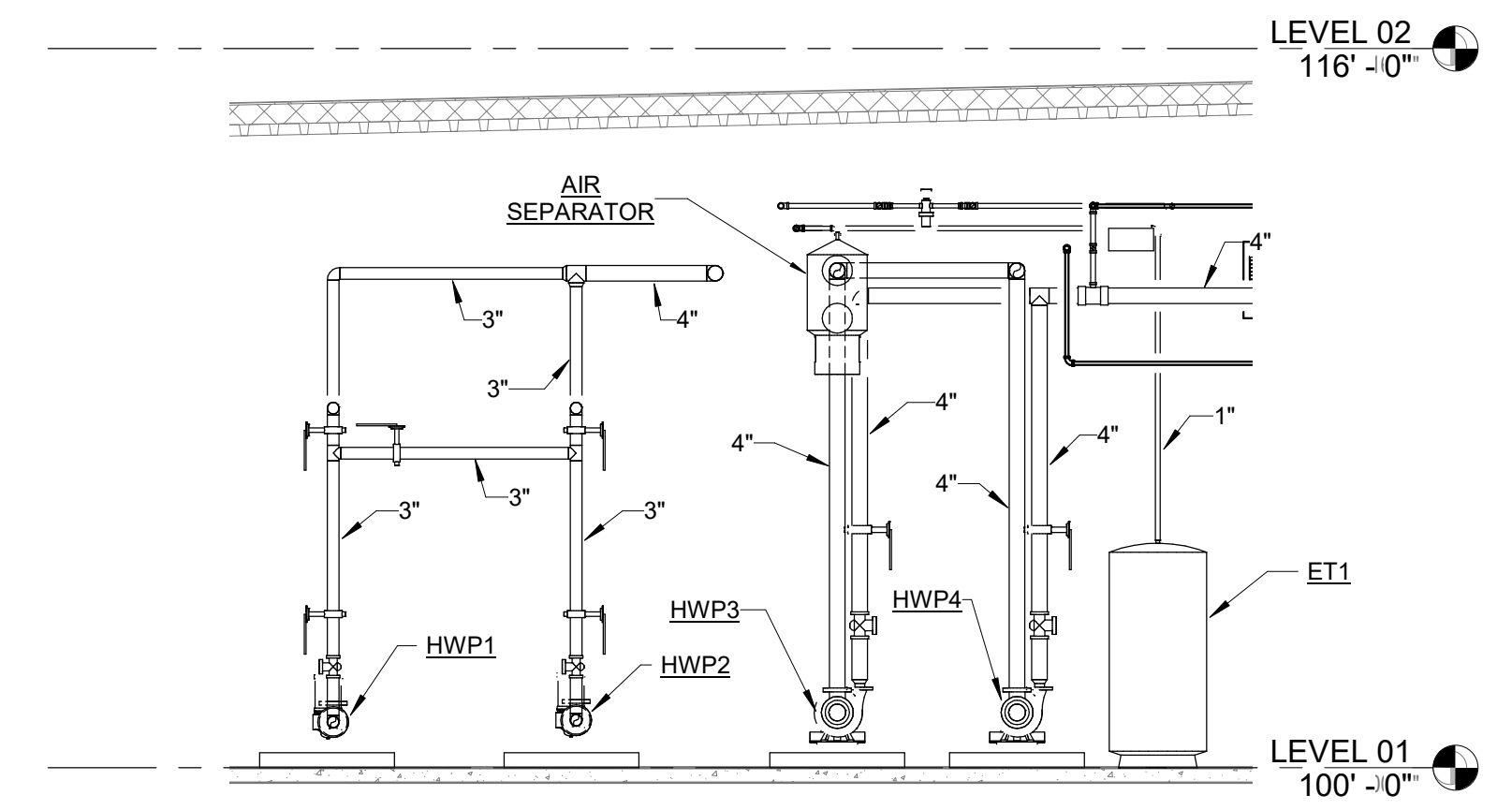
A ENLARGED PLAN
FIRST FLOOR MECHANICAL ROOM
SCALE: 1/4" = 1'-0"
0 1 2 4



B SECTION
B/H401
SCALE: 1/4" = 1'-0"
0 1 2 4



C SECTION
C/H401
SCALE: 1/4" = 1'-0"
0 1 2 4



D D/H401
SCALE: 1/4" = 1'-0"
0 1 2 4

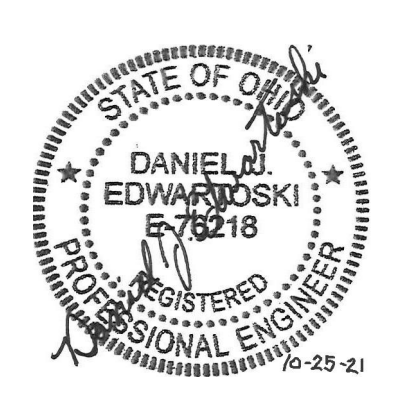
| # | DATE | CHANGE DESCRIPTION |
|---|------|--------------------|
| | | |
| | | |
| | | |

The Greater Dayton School
Dwight Park Dr.
DAYTON, OH 45404
FOR
The Connor Group Kids & Community Partners

MOODY-NOLAN
300 SPRUCE STREET
SUITE 300
COLUMBUS, OHIO 43215
PHONE: (614) 461-4664
FAX: (614) 280-8881

DRAWING TITLE:
HVAC ENLARGED PLANS & SECTIONS

KORDA
KORDA, NEMETH ENGINEERING
1650 WATERMARK DRIVE
SUITE 200
COLUMBUS, OHIO 43215
DRAWN BY: Dave Bach
DESIGNED BY: Dave Edmister/BAI
CHECKED BY: Eric Swenson
PROJECT NUMBER: 2018-217



| | |
|--|-------------------|
| 10/25/21 | CHECKED BY: KORDA |
| Proj. # 18187 | |
| H401 | |
| INTERIOR PACKAGE CONSTRUCTION DOCUMENTS | |