

- CODED NOTES:
1. PROVIDE SKUTT ENVIRONMENT2 FAN CAPABLE OF EXHAUST 140 CFM THROUGH UP TO 60' OF 4" DUCT WITH THREE 90 DEGREE BENDS. MOUNT THE FAN TO THE WALL BEHIND THE KILN AND WITHIN 6" OF THE KILN. RUN 3" FLEXIBLE ALUMINUM DUCT BETWEEN THE KILN AND THE FAN. RUN 4" PVC FROM THE FAN TO THE EXTERIOR OF THE BUILDING. FAN PLUGS INTO WALL RECEPTACLE AND IS MANUALLY TURNED ON WITH INTEGRAL SWITCH. REFER TO KILN MANUFACTURER'S INSTALLATION INSTRUCTIONS.
 2. LOCATE FIRE DAMPER IN DUCT PENETRATION AT BOTTOM OF RATED SHAFT.
 3. TRANSFER GRILLE AND DUCTWORK WITH MINIMUM TWO ELBOWS.
 4. 4" DIAMETER LAUNDRY VENT UP THROUGH ROOF. COORDINATE FINAL LOCATIONS WITH ARCHITECT.
 5. LINEAR AIR DEVICE IN SIDEWALL WITH PLENUM. TAP OFF MAIN WITH DAMPER AND CONNECT TO BOTTOM OF LINEAR AIR DEVICE PLENUM. COORDINATION ELEVATION AND FINISH COLOR OF AIR DEVICE WITH ARCHITECT.
 6. INSTALL WALL HUNG AC3 BELOW CABLE TRAY ON WEST WALL OF IT ROOM. TOP OF UNIT SHALL BE 6'-0" A.F.F.
 7. INSTALL WALL HUNG AC2 ABOVE DOOR ON SOUTH WALL OF IT ROOM.
 8. 20/20 UP TO KITCHEN HOOD EXHAUST FAN EF5 ON ROOF. PROVIDE GREASE DUCT CLEANOUT AT BOTTOM OF VERTICAL. PROVIDE GREASE TRAP.
 9. 16/10 UP TO EXHAUST FAN EF6 ON ROOF.
 10. 12/12 UP TO EXHAUST FAN EF7 ON ROOF.
 11. PROVIDE PANT LEG DUCT FITTING. LEGS SHALL BE 16/6. MAKE CONNECTION TO (2) CONNECTIONS ON TOP OF DISHWASHER.
 12. PROVIDE TAPS OFF EXHAUST MAIN TO CONNECT TO (2) 13/14 CONNECTIONS ON GREASE HOOD. PROVIDE GREASE DUCT CLEANOUTS AT TAPS.
 13. PROVIDE MOTORIZED DAMPER AND BALANCE DAMPER. BALANCE TO 800 CFM. MOTORIZED DAMPER TO REMAIN CLOSED DURING KITCHEN OPERATION. OPEN WHEN HOOD IS NOT IN OPERATION.
 14. 24/24 TRANSFER DUCT.
 15. TERMINATE KILN EXHAUST DUCT THROUGH EXTERIOR WALL. PROVIDE CORROSION RESISTANT ALUMINUM ROUND DUCT WALL CAP WITH INTEGRAL ALUMINUM BACKDRAFT DAMPER. PAINT WALL CAP TO MATCH ADJACENT EXTERIOR FINISH. COORDINATE EXACT LOCATION WITH ARCHITECT.
 16. BELLMOUTH OPENING FOR RETURN AIR PLENUM.
 17. 16/10 UP TO EXHAUST FAN EF4 ON ROOF.
 18. UP TO RTU5.
 19. PROVIDE CABLE OPERATED DAMPER FOR ACCESS.
 20. PROVIDE SHEETMETAL PLENUM BEHIND LOUVER.

A FLOOR PLAN
FIRST FLOOR - AREA A

SCALE: 1/8" = 1'-0"
0" 1" 2" 4" 8"

#	DATE	CHANGE DESCRIPTION
1	11/12/2021	ADDENDUM 1 - INTERIOR
2	11/17/2021	ADDENDUM 2 - INTERIOR

The Greater Dayton School
Dwight Park, OH
DAYTON, OH 45404
FOR

The Connor Group Kids & Community Partners

300 SPRUCE STREET
SUITE 300
COLUMBUS, OHIO 43215

PHONE: (614) 461-4664
FAX: (614) 280-8881

DRAWING TITLE:
**HVAC FIRST FLOOR PLAN
AREA A**

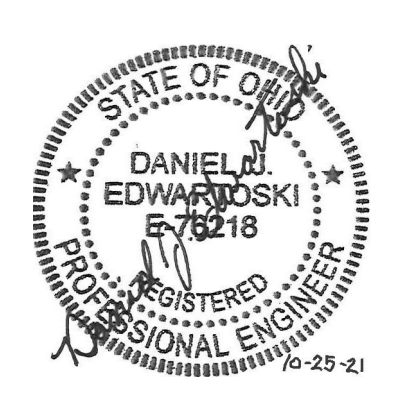
10/25/21
DRAWN BY: KORDA CHECKED BY: KORDA
Proj. # 18187

H201A

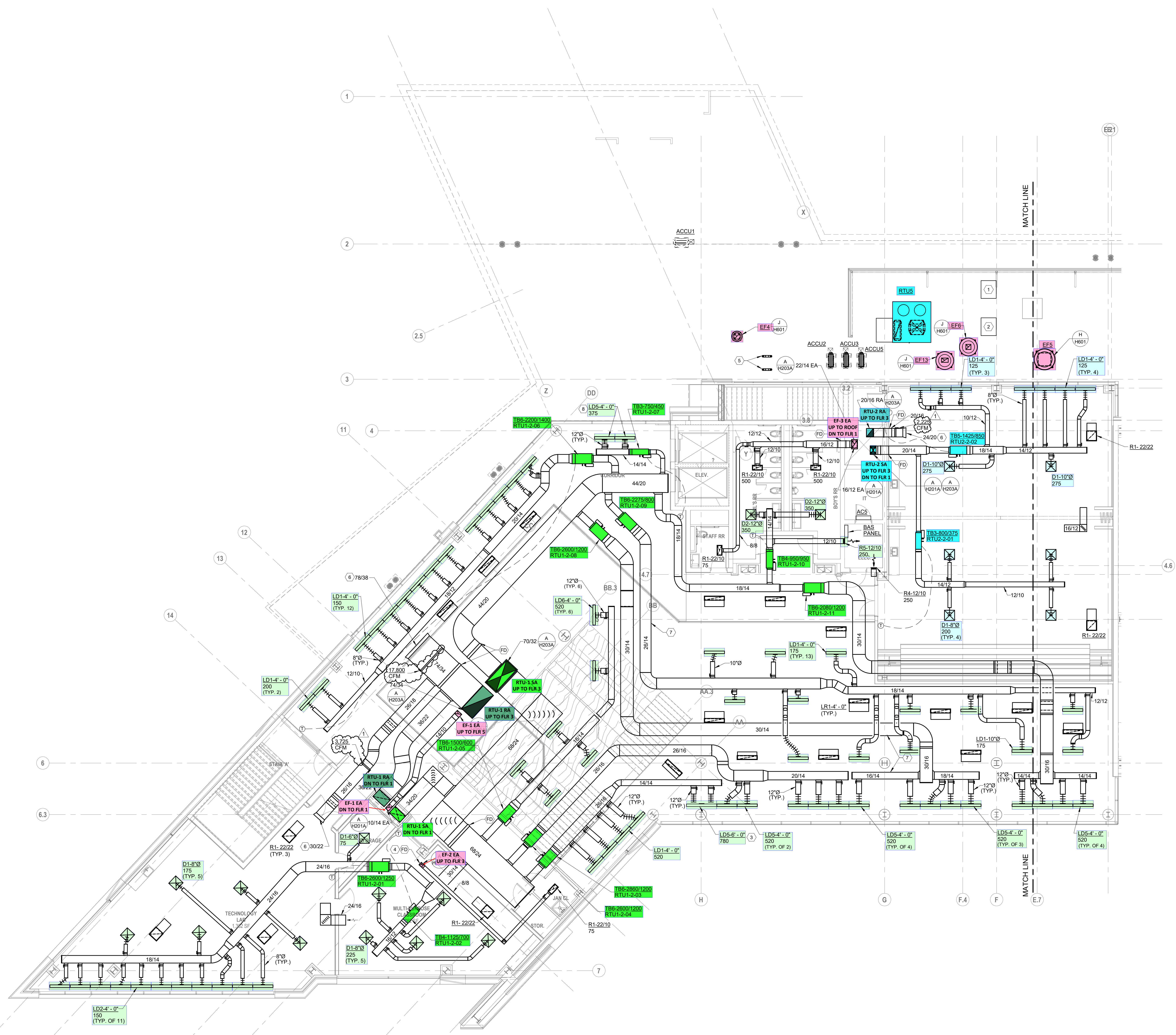
INTERIOR PACKAGE
CONSTRUCTION DOCUMENTS

KORDA
KORDA NEMETH ENGINEERING
1650 WATERMARK DRIVE
SUITE 200
COLUMBUS, OHIO 43215

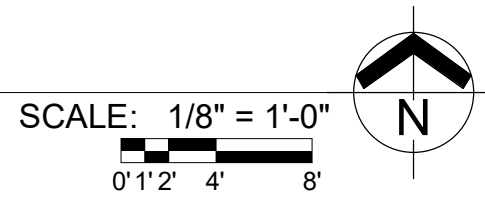
DRAWN BY: Dave Bach
DESIGNED BY: Dan Edwards
CHECKED BY: Dan Edwards
PROJECT NUMBER: 2018-217



- CODED NOTES:**
1. WALK IN FREEZER CONDENSING UNIT BY KITCHEN EQUIPMENT CONTRACTOR. LOCATION SHOWN FOR COORDINATION WITH MECHANICAL EQUIPMENT.
 2. WALK IN COOLER CONDENSING UNIT BY KITCHEN EQUIPMENT CONTRACTOR. LOCATION SHOWN FOR COORDINATION WITH MECHANICAL EQUIPMENT.
 3. SINGLE LINEAR DEVICE WITH TWO 12" TAPS INTO PLENUM.
 4. LOCATE FIRE DAMPER IN DUCT AT BOTTOM OF SHAFT.
 5. TERMINATE LAUNDRY VENT WITH GOOSENECK AND BIRDSCREEN. MINIMUM 18" ABOVE FINISHED ROOF.
 6. BELLMOUTH OPENING FOR RETURN AIR PLENUM.
 7. ALL EXPOSED DUCTWORK ABOVE BAFFLE AND CLOUD CEILINGS TO BE PAINTED. FINISH COLOR TO BE COORDINATED WITH ARCHITECT.
 8. PROVIDE CABLE OPERATED DAMPER FOR ACCESS.



A FLOOR PLAN
SECOND FLOOR - AREA A



#	DATE	CHANGE DESCRIPTION
1	11/17/2021	ADDENDUM 2 - INTERIOR

The Greater Dayton School
Dwight Park Ct.
DAYTON, OH 45404
FOR

The Connor Group Kids & Community Partners

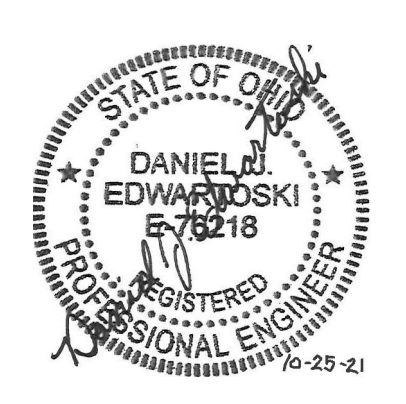
300 SPRUCE STREET
SUITE 300
COLUMBUS, OHIO 43215

PHONE: (614) 461-4664
FAX: (614) 280-8881

DRAWING TITLE:
**HVAC SECOND FLOOR PLAN
AREA A**

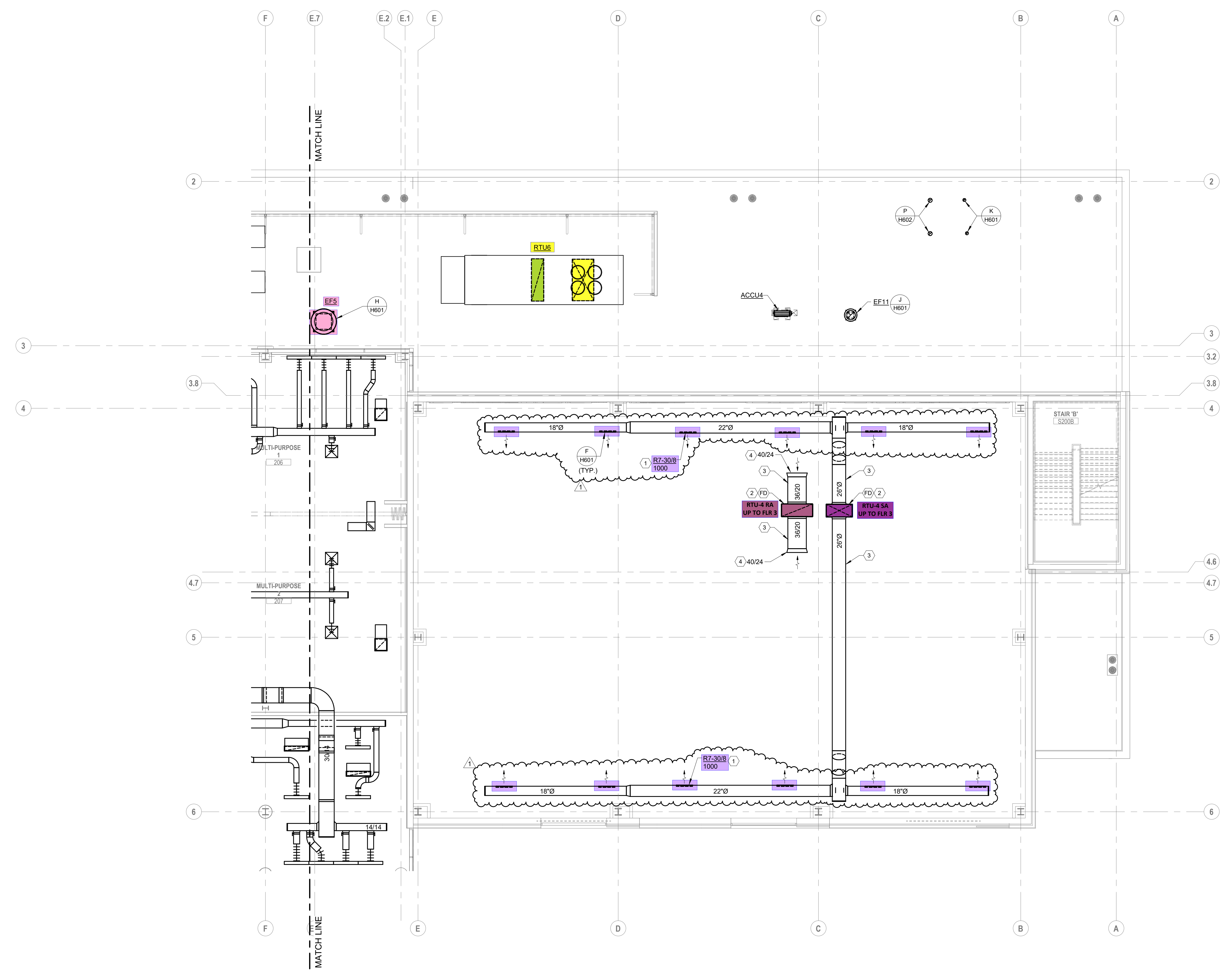
KORDA
KORDA NEMETH ENGINEERING
1650 WATERMARK DRIVE
SUITE 200
COLUMBUS, OHIO 43215

DESIGNED BY: Dave Edwards
CHECKED BY: Eric Swanson
PROJECT NUMBER: 2018-217



10/25/21	DRAWN BY: KORDA	CHECKED BY: KORDA
Proj. # 18187		
H202A		
INTERIOR PACKAGE CONSTRUCTION DOCUMENTS		

- CODED NOTES:**
1. ANGLE AIR FLOW 45 DEGREES DOWNWARD TOWARD CENTER OF GYMNASIUM. COORDINATE AIR DEVICES WITH SUSPENDED LIGHTING DEVICES ARE TO BE LOCATED SUCH THAT AIR IS NOT DIRECTLY ON LIGHTING.
 2. LOCATE FIRE DAMPER IN VERTICAL DUCT AT SHAFT PENETRATION.
 3. ROUTE DUCTWORK TIGHT TO UNDERSIDE OF DECK AND BETWEEN BEAMS.
 4. BELLMOUTH OPENING FOR RETURN AIR PLENUM.



A FLOOR PLAN
SECOND FLOOR - AREA B

SCALE: 1/8" = 1'-0"
0' 1" 2" 4" 8"

#	DATE	CHANGE DESCRIPTION
1	11/12/2021	ADDENDUM 1 - INTERIOR

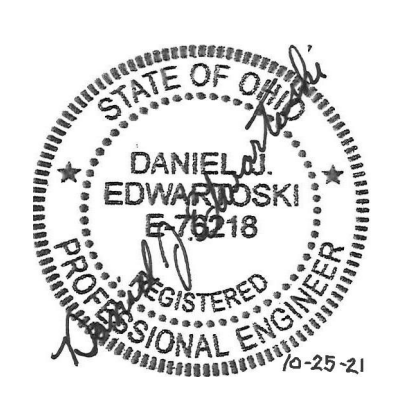
The Greater Dayton School
Dwight Park Ct.
DAYTON, OH 45404
FOR
The Connor Group Kids & Community Partners

MOODY-NOLAN
300 SPRUCE STREET
SUITE 300
COLUMBUS, OHIO 43215
PHONE: (614) 461-4664
FAX: (614) 280-8881

DRAWING TITLE:
**HVAC SECOND FLOOR PLAN
AREA B**

10/25/21	CHECKED BY: KORDA
10/25/21	DRAWN BY: KORDA
Proj. # 18187	
H202B	
INTERIOR PACKAGE CONSTRUCTION DOCUMENTS	

KORDA
KORDA, NEMETH ENGINEERING
1650 WATERMARK DRIVE
SUITE 200
COLUMBUS, OHIO 43215
DESIGNED BY: Dave Blach
CHECKED BY: Eric Swanson
PROJECT NUMBER: 2018-217



- CODED NOTES:**
- BELLMOUTH OPENING FOR RETURN AIR PLENUM.
 - 8" DIAMETER FLEX CONNECTION TO WENGER SOUND BOOTH. BALANCE NORTH BOOTH 320C TO 65 CFM. BALANCE SOUTH BOOTH 320B TO 105 CFM. COORDINATE EXACT LOCATIONS WITH EQUIPMENT.
 - 8" DIAMETER RETURN DUCT CONNECTION TO WENGER SOUND BOOTH. TRANSITION TO 1616 RECTANGULAR RETURN BOOT WITH INTERNAL LINING. COORDINATE EXACT LOCATIONS WITH EQUIPMENT.
 - 24/12 RETURN TRANSFER DUCT.
 - PROVIDE CABLE OPERATED DAMPER FOR ACCESS.



A FLOOR PLAN
 THIRD FLOOR - AREA A
 SCALE: 1/8" = 1'-0"
 0" 1/2" 4" 8"

#	DATE	CHANGE DESCRIPTION
1	11/17/2021	ADDENDUM 2 - INTERIOR

The Greater Dayton School
 2000 Park Dr.
 DAYTON, OH 45404
 FOR

The Connor Group Kids & Community Partners

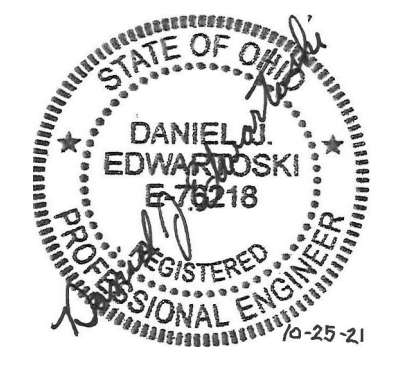
300 SPRUCE STREET
 SUITE 300
 COLUMBUS, OHIO 43215

PHONE: (614) 461-4664
 FAX: (614) 280-8881

DRAWING TITLE:
HVAC THIRD FLOOR PLAN
AREA A

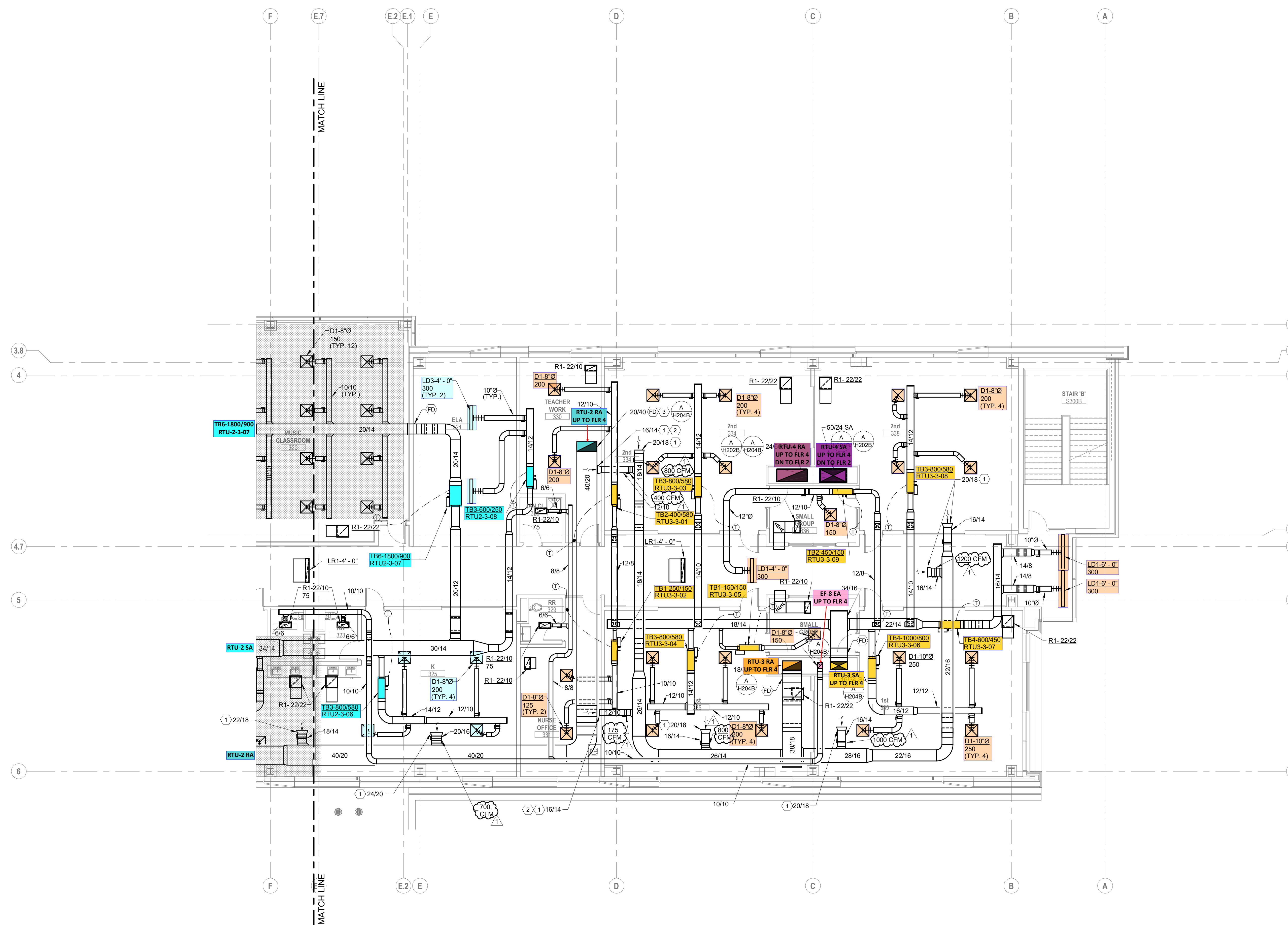
KORDA
 KORDA, NEMETH ENGINEERING
 1650 WATERMARK DRIVE
 SUITE 200
 COLUMBUS, OHIO 43215

DESIGNED BY: Dan Edwards
 CHECKED BY: Eric Swanson
 PROJECT NUMBER: 2018-217



10/25/21	DRAWN BY: KORDA	CHECKED BY: KORDA
Proj. # 18187		
H203A		
INTERIOR PACKAGE	CONSTRUCTION DOCUMENTS	

- CODED NOTES:**
- BELLMOUTH OPENING FOR RETURN AIR FLENUM.
 - PROVIDE CLEARANCE FOR FULL OPENING OF TRANSFER DUCT.
 - LOCATE FIRE DAMPER IN DUCT PENETRATION AT BOTTOM OF RATED SHAFT.



A FLOOR PLAN
THIRD FLOOR - AREA B

SCALE: 1/8" = 1'-0"
0' 1' 2' 4' 8'

#	DATE	CHANGE DESCRIPTION
1	11/17/2021	ADDENDUM 2 - INTERIOR

The Greater Dayton School
Dwight Park Dr.
DAYTON, OH 45404
FOR

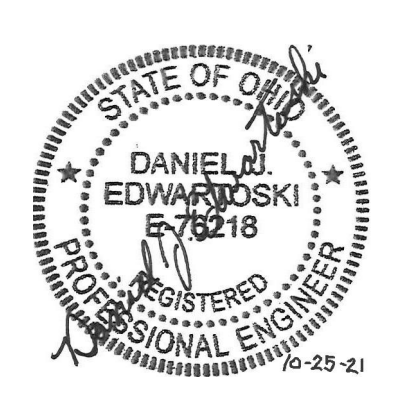
The Connor Group Kids & Community Partners

300 SPRUCE STREET
SUITE 300
COLUMBUS, OHIO 43215
PHONE: (614) 461-4664
FAX: (614) 280-8881

DRAWING TITLE:
**HVAC THIRD FLOOR PLAN
AREA B**

10/25/21	CHECKED BY: KORDA
10/25/21	DESIGNED BY: Dan Edwards
10/25/21	DRAWN BY: Dan Edwards
10/25/21	PROJECT NUMBER: 2018-217

KORDA
KORDA, NEMETH ENGINEERING
1650 WATERMARK DRIVE
SUITE 200
COLUMBUS, OHIO 43215
DESIGNED BY: Dan Edwards
CHECKED BY: Dan Edwards
PROJECT NUMBER: 2018-217



- CODED NOTES:**
1. LOCATE TAP AND DAMPER AT UNDERSIDE OF DUCT.
 2. PROVIDE A 1'-0" INACTIVE SECTION AND BLANK OFF.
 3. PROVIDE BORDERS AND ACCESSORIES REQUIRED FOR A CONTINUOUS, SEAMLESS LOOK THROUGH ACTIVE AND INACTIVE SECTIONS.
 4. PROVIDE A 1'-0" INACTIVE SECTION AND BLANK OFF. COORDINATE WITH STRUCTURAL COLUMN.
 5. COORDINATE ELEVATION OF AIR DEVICES WITH ARCHITECT. TYPICAL.
 6. BELLMOUTH OPENING FOR RETURN AIR PLENUM.
 7. PROVIDE DOUBLE-WALL ACOUSTICAL DUCT PER SPECIFICATIONS.



A FLOOR PLAN
 FOURTH FLOOR - AREA A

SCALE: 1/8" = 1'-0"
 0 1' 2' 4' 8'

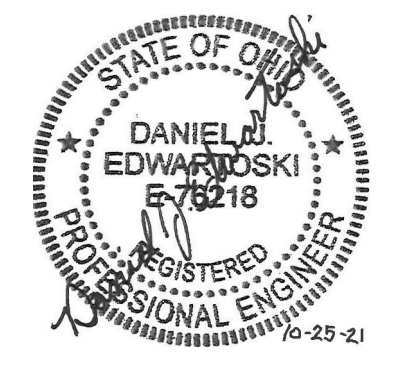
#	DATE	CHANGE DESCRIPTION
1	11/17/2021	ADDENDUM 2 - INTERIOR

The Greater Dayton School
 2000 Park Dr.
 DAYTON, OH 45404
 FOR
The Connor Group Kids & Community Partners

MOODY-NOLAN
 300 SPRUCE STREET
 SUITE 300
 COLUMBUS, OHIO 43215
 PHONE: (614) 461-4664
 FAX: (614) 280-8881

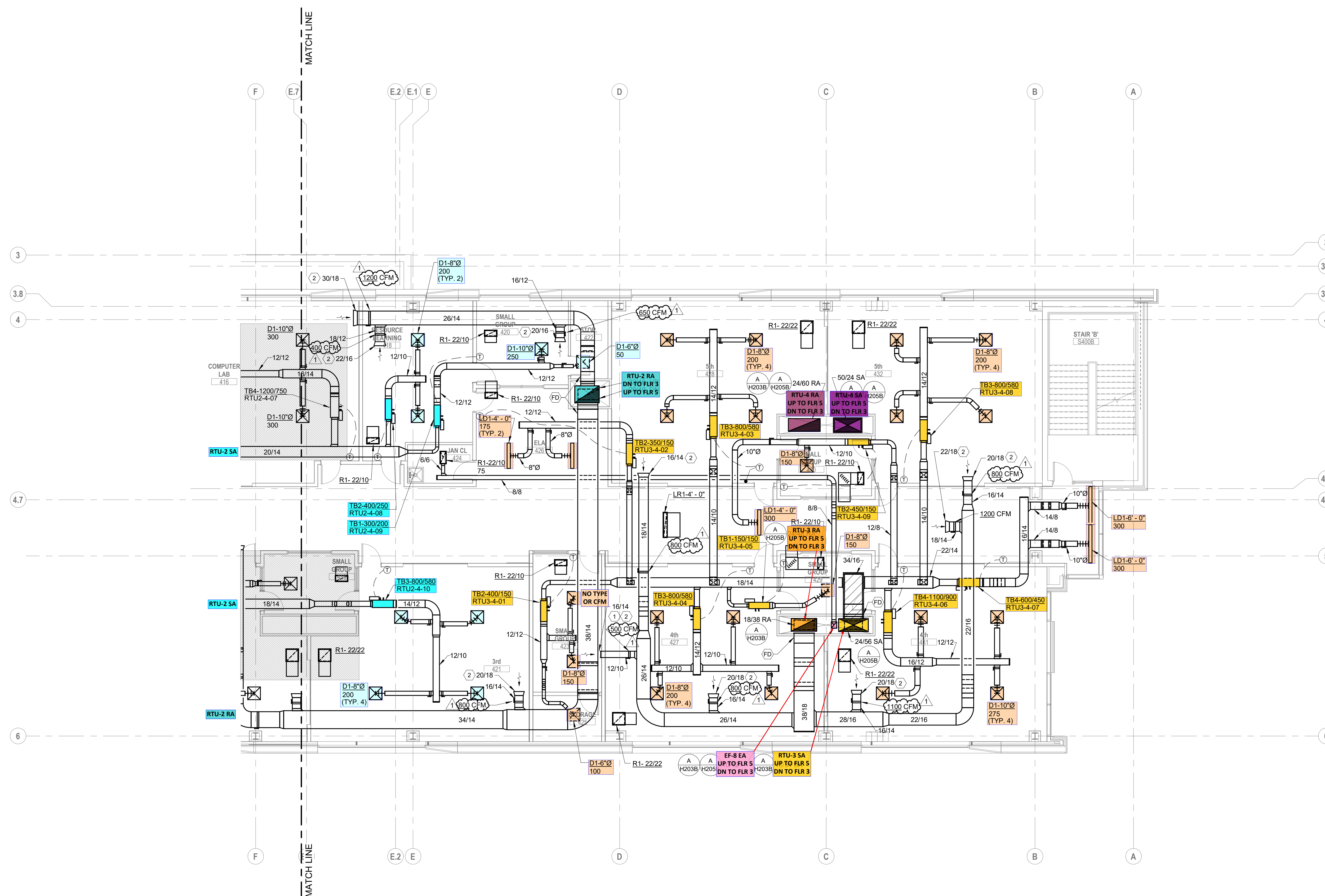
DRAWING TITLE:
HVAC FOURTH FLOOR PLAN
AREA A

KORDA
 KORDA NEMETH ENGINEERING
 1650 WATERMARK DRIVE
 SUITE 200
 COLUMBUS, OHIO 43215
 DESIGNED BY: Dave Bach
 CHECKED BY: Eric Swenson
 PROJECT NUMBER: 2018-217



10/25/21
 DRAWN BY: KORDA CHECKED BY: KORDA
 Proj. # 18187
H204A
 INTERIOR PACKAGE
 CONSTRUCTION DOCUMENTS

- CODED NOTES:**
1. PROVIDE CLEARANCE FOR FULL OPENING OF TRANSFER DUCT.
 2. BELLMOUTH OPENING FOR RETURN AIR PLENUM.



A FLOOR PLAN
FOURTH FLOOR - AREA B

SCALE: 1/8" = 1'-0"

#	DATE	CHANGE DESCRIPTION
1	11/17/2021	ADDENDUM 2 - INTERIOR

The Greater Dayton School
Dwight Park Dr.
DAYTON, OH 45404
FOR

The Connor Group Kids & Community Partners

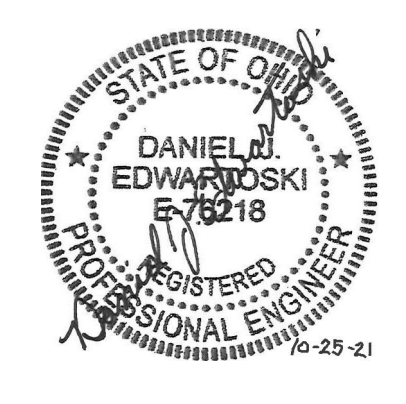
300 SPRUCE STREET
SUITE 300
COLUMBUS, OHIO 43215

PHONE: (614) 461-4664
FAX: (614) 280-8881

DRAWING TITLE:
**HVAC FOURTH FLOOR PLAN
AREA B**

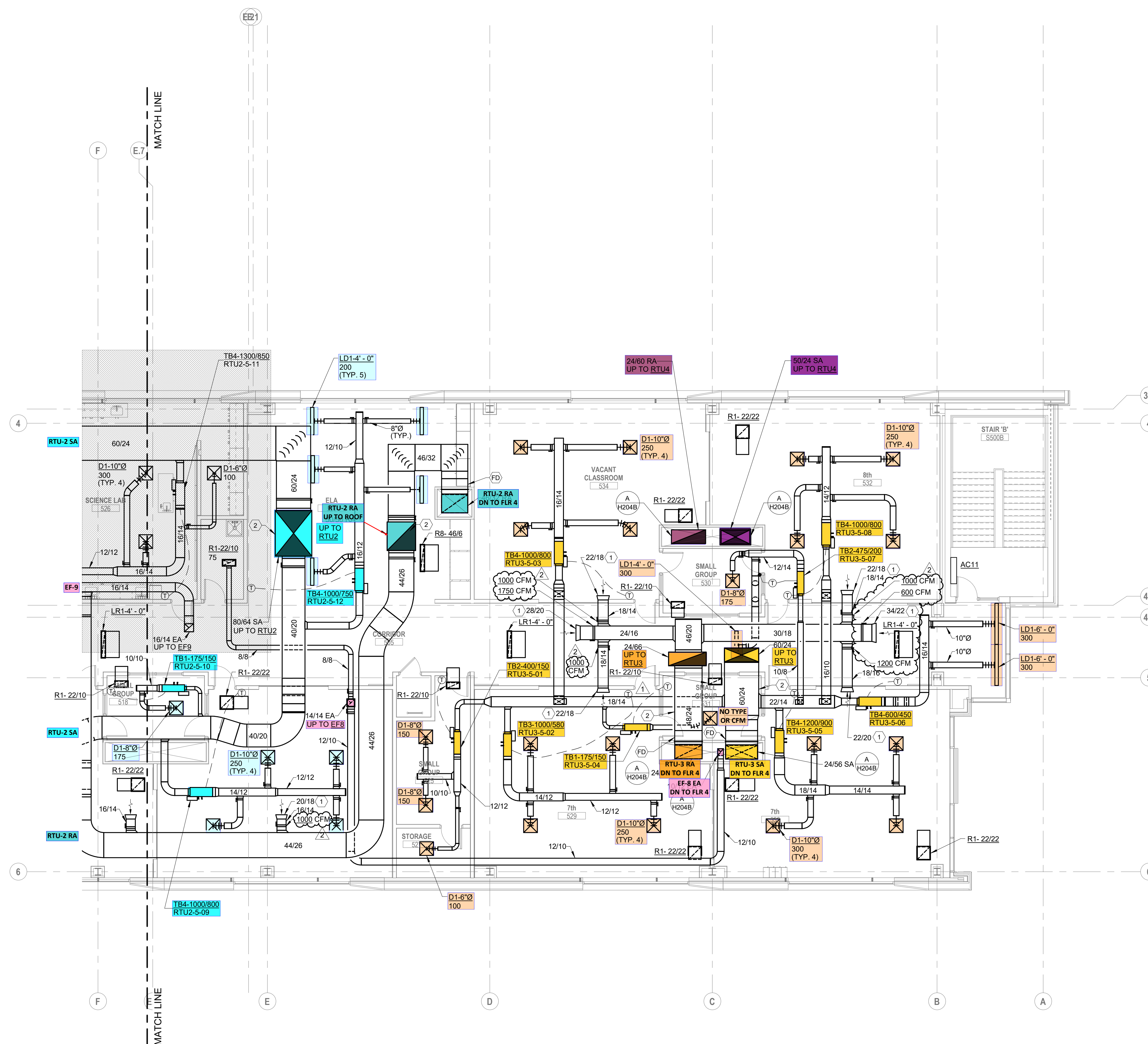
KORDA
KORDA, NEMETH ENGINEERING
1650 WATERMARK DRIVE
SUITE 200
COLUMBUS, OHIO 43215

DRAWN BY: Dave Bach
DESIGNED BY: Dan Edwarowski
CHECKED BY: Eric Swanson
PROJECT NUMBER: 2018-217



10/25/21	CHECKED BY: KORDA
Proj. # 18187	
H204B	
INTERIOR PACKAGE CONSTRUCTION DOCUMENTS	

- CODED NOTES:**
- BELLMOUTH OPENING FOR RETURN AIR PLENUM
 - PROVIDE DOUBLE-WALL ACOUSTICAL DUCT PER SPECIFICATIONS.



A FLOOR PLAN
FIFTH FLOOR - AREA B

SCALE: 1/8" = 1'-0"
0" 1" 2" 4" 6"

#	DATE	CHANGE DESCRIPTION
1	11/12/2021	ADDENDUM 1 - INTERIOR
2	11/17/2021	ADDENDUM 2 - INTERIOR

The Greater Dayton School
Dwight Park Dr.
DAYTON, OH 45404
FOR

The Connor Group Kids & Community Partners

300 SPRUCE STREET
SUITE 300
COLUMBUS, OHIO 43215

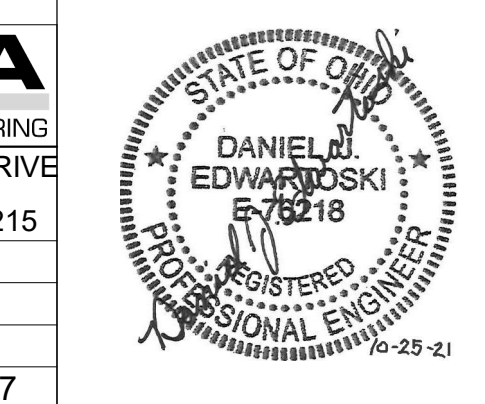
PHONE: (614) 461-4664
FAX: (614) 280-8881

DRAWING TITLE:
HVAC FIFTH FLOOR PLAN
AREA B

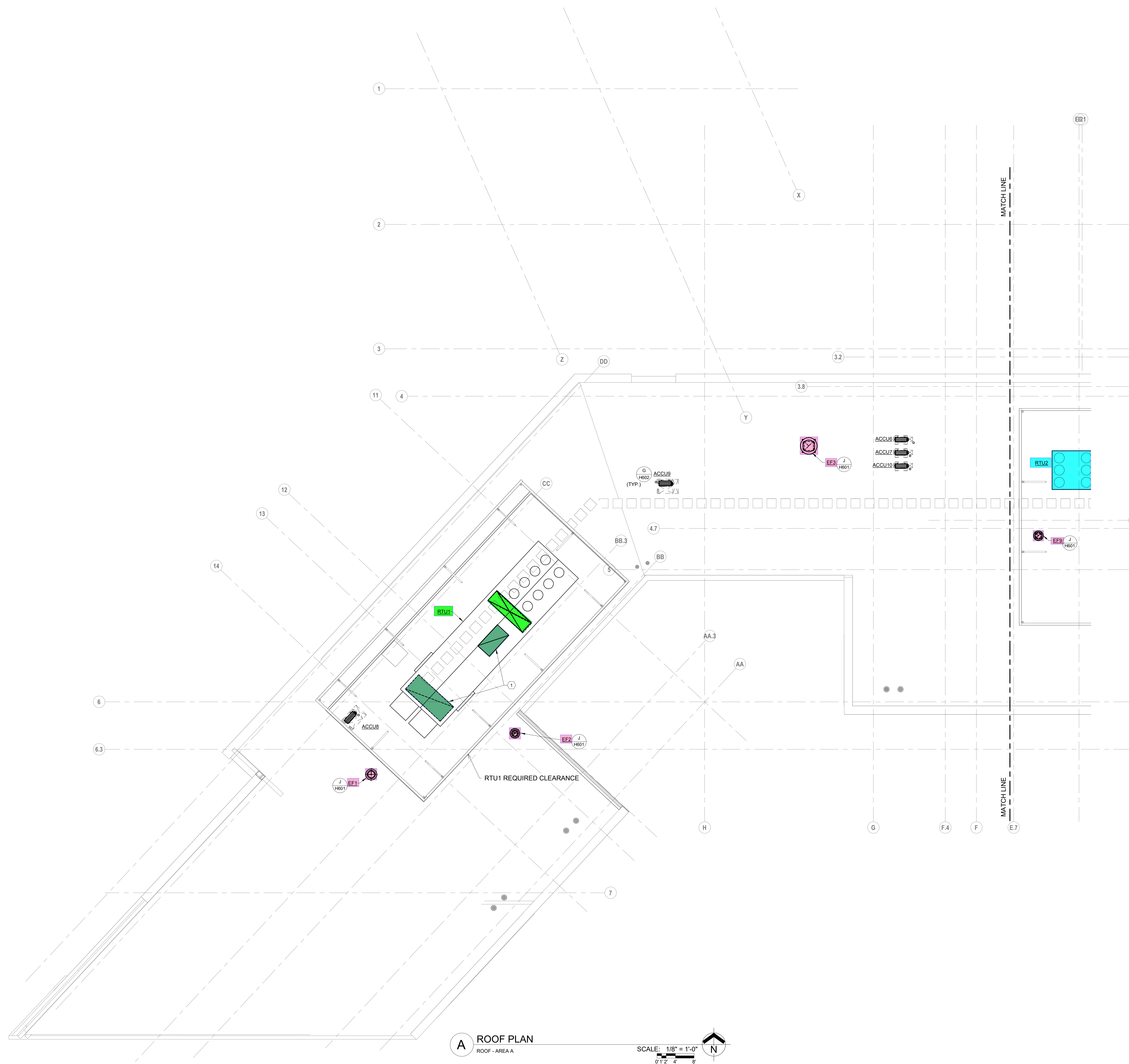
10/25/21	CHECKED BY: KORDA
Proj. # 18187	
H205B	
INTERIOR PACKAGE	
CONSTRUCTION DOCUMENTS	

KORDA
KORDA, NEMETH ENGINEERING
1650 WATERMARK DRIVE
SUITE 200
COLUMBUS, OHIO 43215

DESIGNED BY: Dan Edwards
CHECKED BY: Eric Swenson
PROJECT NUMBER: 2018-217

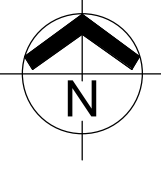


- CODED NOTES:**
- RETURN PLENUM CURB UNDER ROOFTOP UNIT. RETURN CONNECTION FROM UNIT AND FLOOR BELOW BOTH CONNECT TO PLENUM CURB.



A ROOF PLAN
ROOF - AREA A

SCALE: 1/8" = 1'-0"
0' 1' 2' 4' 8'



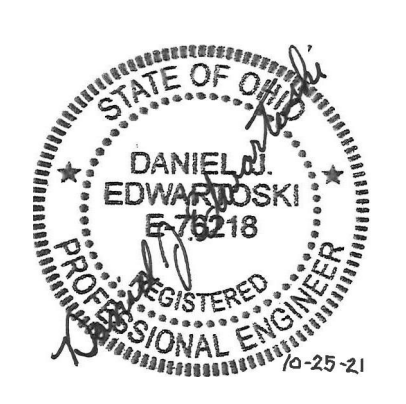
#	DATE	CHANGE DESCRIPTION

The Greater Dayton School
Dwight Park Dr.
DAYTON, OH 45404
FOR
The Connor Group Kids & Community Partners

MOODY-NOLAN
300 SPRUCE STREET
SUITE 300
COLUMBUS, OHIO 43215
PHONE: (614) 461-4664
FAX: (614) 280-8881

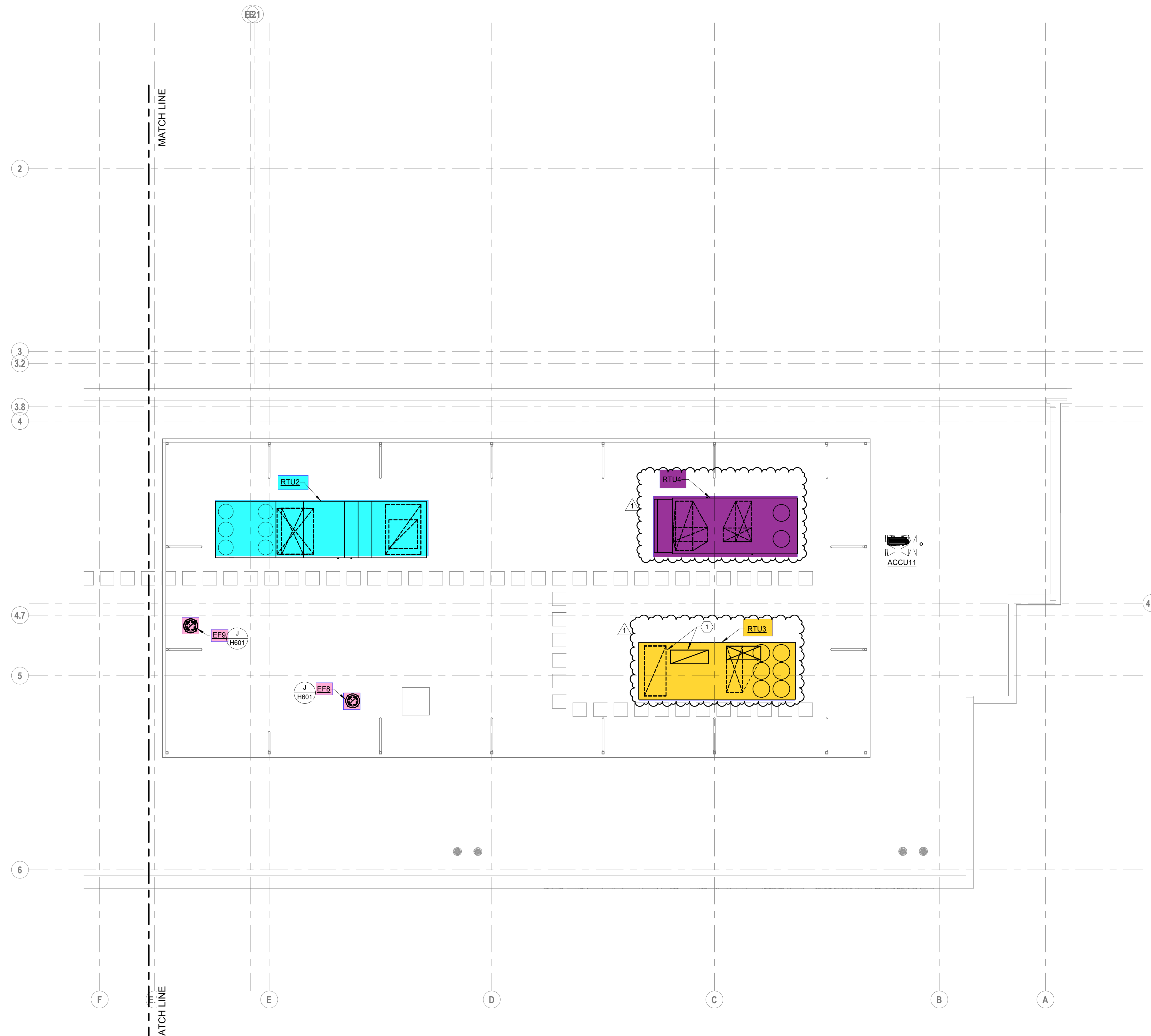
DRAWING TITLE:
HVAC ROOF PLAN AREA A

KORDA
KORDA NEMETH ENGINEERING
1650 WATERMARK DRIVE
SUITE 200
COLUMBUS, OHIO 43215
DRAWN BY: Dave Blach
DESIGNED BY: Dan Edwards/Ed
CHECKED BY: Eric Swanson
PROJECT NUMBER: 2018-217



10/25/21
DRAWN BY: KORDA CHECKED BY: KORDA
Proj. # 18187
H206A
INTERIOR PACKAGE
CONSTRUCTION DOCUMENTS

- CODED NOTES:**
- RETURN PLENUM CURB UNDER ROOFTOP UNIT. RETURN CONNECTION FROM UNIT AND FLOOR BELOW BOTH CONNECT TO PLENUM CURB.



A ROOF PLAN
ROOF - AREA B

SCALE: 1/8" = 1'-0"
0' 1" 2' 4' 8'

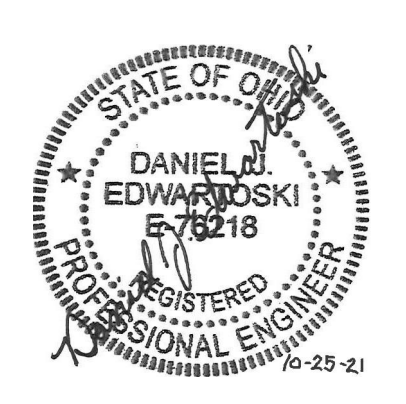
#	DATE	CHANGE DESCRIPTION
1	11/12/2021	ADDENDUM 1 - INTERIOR

The Greater Dayton School
Dwight Park Ct.
DAYTON, OH 45404
FOR
The Connor Group Kids & Community Partners

MOODY-NOLAN
300 SPRUCE STREET
SUITE 300
COLUMBUS, OHIO 43215
PHONE: (614) 461-4664
FAX: (614) 280-8881

DRAWING TITLE:
HVAC ROOF PLAN AREA B

KORDA
KORDA, NEMETH ENGINEERING
1650 WATERMARK DRIVE
SUITE 200
COLUMBUS, OHIO 43215
DRAWN BY: Dave Bach
DESIGNED BY: Dave Edwards/Rob
CHECKED BY: Eric Swanson
PROJECT NUMBER: 2018-217



10/25/21	DRAWN BY: KORDA	CHECKED BY: KORDA
Proj. # 18187		
H206B		
INTERIOR PACKAGE	CONSTRUCTION DOCUMENTS	