

- GENERAL NOTES:**
1. THIS SHEET IS FOR INFORMATION ONLY AND NOT INTENDED TO DOCUMENT ALL UNDERGROUND MECHANICAL WORK. PROPOSED UNDERGROUND PATHWAYS FOR MAJOR MECHANICAL DISTRIBUTION ARE NOTE TO ASSIST OTHER TRADES. REFER TO FIT-OUT PACKAGE FOR COMPLETE MECHANICAL DESIGN. MECHANICAL CONTRACTOR IS RESPONSIBLE FOR COORDINATING FINAL UNDERGROUND HOT WATER SUPPLY AND RETURN PIPING.
- CODED NOTES:**
1. PROVIDE 3-WAY VALVE. REFER TO DETAIL AH602.
 2. PROVIDE TRIM AND END PIECES FOR CONTINUOUS LOOK.
 3. PROVIDE REFRIGERANT LINESET FROM INDOOR UNIT TO OUTDOOR CONDENSER UNIT ON ROOF. SIZE PER MANUFACTURER'S INSTRUCTIONS. SINGLE LINE REPRESENTS BOTH PIPES IN LINESET.
 4. 1" CONDENSATE DRAIN DOWN TO FLOOR DRAIN. TERMINATE WITH 2" AIR GAP AT FLOOR DRAIN FUNNEL.

A FLOOR PLAN
FIRST FLOOR - AREA A

SCALE: 1/8" = 1'-0"
0' 1/2" 4' 8'

#	DATE	CHANGE DESCRIPTION

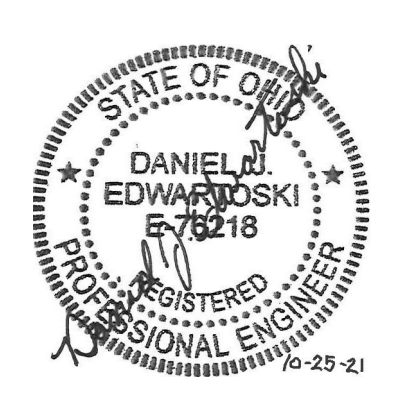
The Greater Dayton School
Dwight Park Dr.
DAYTON, OH 45404
FOR

The Connor Group Kids & Community Partners

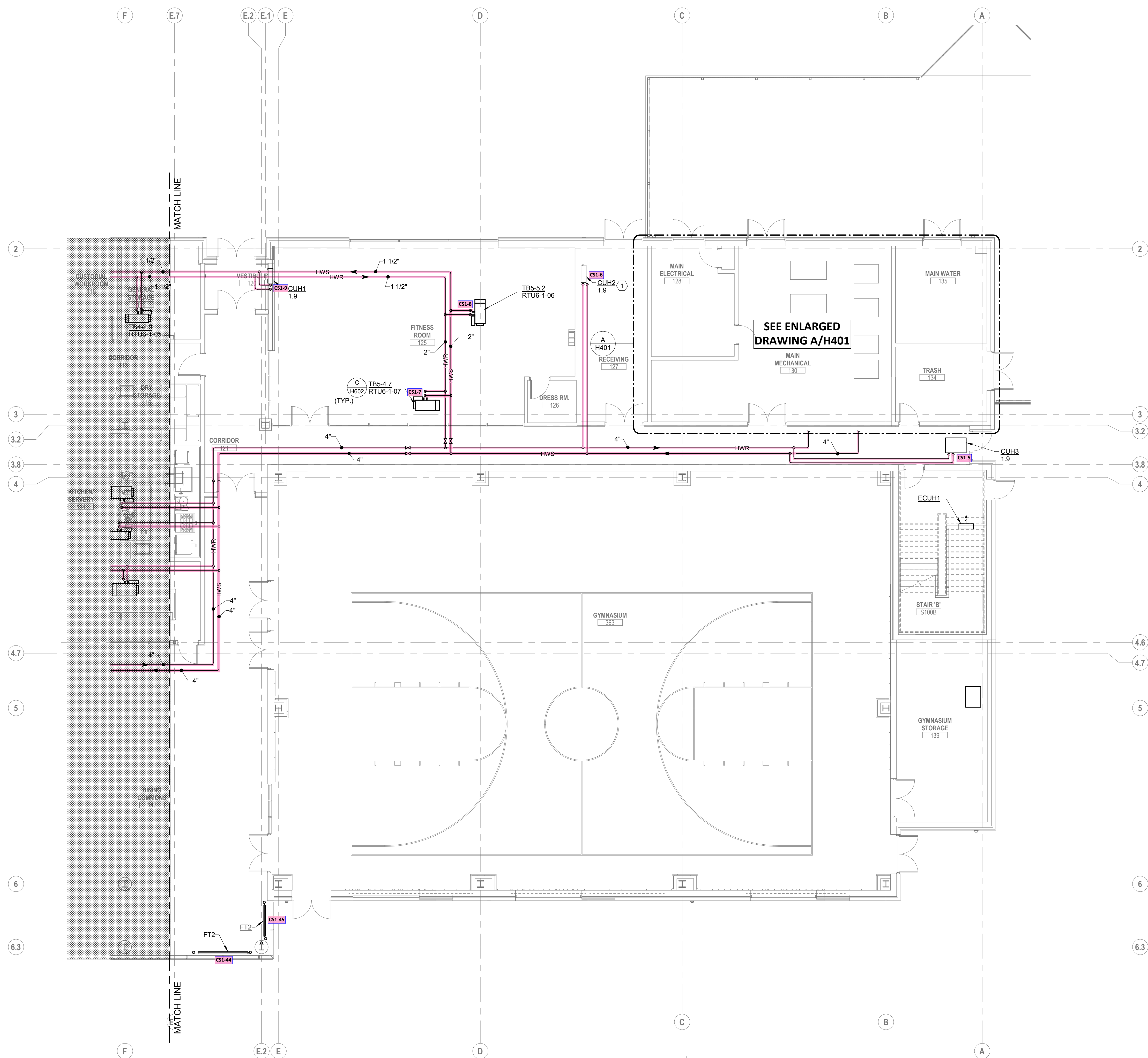
300 SPRUCE STREET
SUITE 300
COLUMBUS, OHIO 43215
PHONE: (614) 461-4664
FAX: (614) 280-8881

DRAWING TITLE:
**HVAC PIPING FIRST FLOOR
PLAN AREA A**

KORDA
KORDA NEWMETH ENGINEERING
1650 WATERMARK DRIVE
SUITE 200
COLUMBUS, OHIO 43215
DRAWN BY: Dave Bach
DESIGNED BY: Dan Edwards/Ed
CHECKED BY: Eric Stephens
PROJECT NUMBER: 2018-217



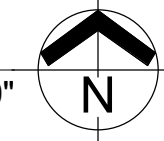
10/25/21
DRAWN BY: KORDA CHECKED BY: KORDA
Proj. # 18187
H301A
INTERIOR PACKAGE
CONSTRUCTION DOCUMENTS



- CODED NOTES:
 1. PROVIDE 3-WAY VALVE.

A FLOOR PLAN
 FIRST FLOOR - AREA B

SCALE: 1/8" = 1'-0"
 0" 1" 2" 4" 8"



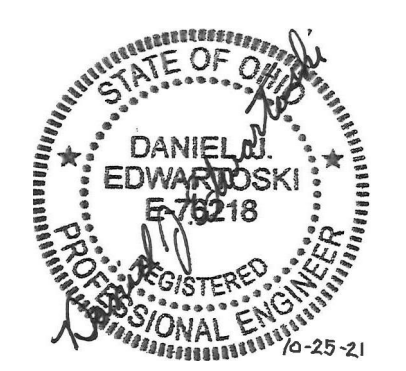
#	DATE	CHANGE DESCRIPTION

The Greater Dayton School
 2000 Park Dr.
 DAYTON, OH 45404
 FOR
The Connor Group Kids & Community Partners

MOODY-NOLAN
 300 SPRUCE STREET
 SUITE 300
 COLUMBUS, OHIO 43215
 PHONE: (614) 461-4664
 FAX: (614) 280-8881

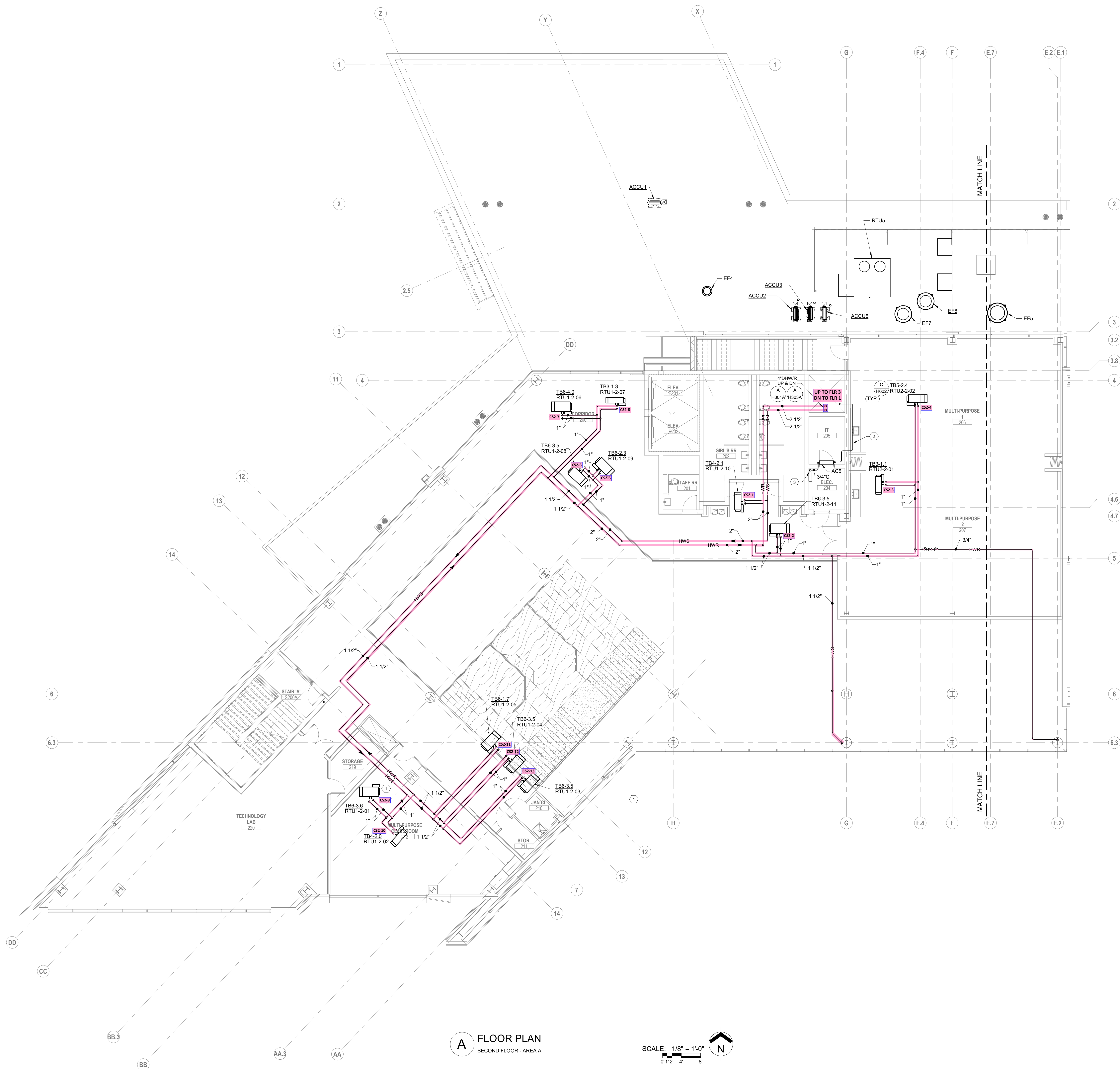
DRAWING TITLE:
**HVAC PIPING FIRST FLOOR
 PLAN AREA B**

KORDA
 KORDA, NEMETH ENGINEERING
 1650 WATERMARK DRIVE
 SUITE 200
 COLUMBUS, OHIO 43215
 DRAWN BY: Dave Blach
 DESIGNED BY: Dave Edmister/Blach
 CHECKED BY: Eric Swanson
 PROJECT NUMBER: 2018-217



10/25/21
 DRAWN BY: KORDA CHECKED BY: KORDA
 Proj. # 18187
H301B
 INTERIOR PACKAGE
 CONSTRUCTION DOCUMENTS

- CODED NOTES:**
1. PROVIDE 3-WAY VALVE.
 2. PROVIDE REFRIGERANT LINESET FROM INDOOR UNIT TO OUTDOOR CONDENSER UNIT ON ROOF. SIZE PER MANUFACTURER'S INSTRUCTIONS. SINGLE LINE REPRESENTS BOTH PIPES IN LINESET.
 3. 1" CONDENSATE DRAIN DOWN THROUGH FLOOR OPENING TO BELOW.



A FLOOR PLAN
SECOND FLOOR - AREA A

SCALE: 1/8" = 1'-0"
0' 1" 2" 4" 8"

#	DATE	CHANGE DESCRIPTION

The Greater Dayton School
Dwight Park Ct.
DAYTON, OH 45404
FOR
The Connor Group Kids & Community Partners

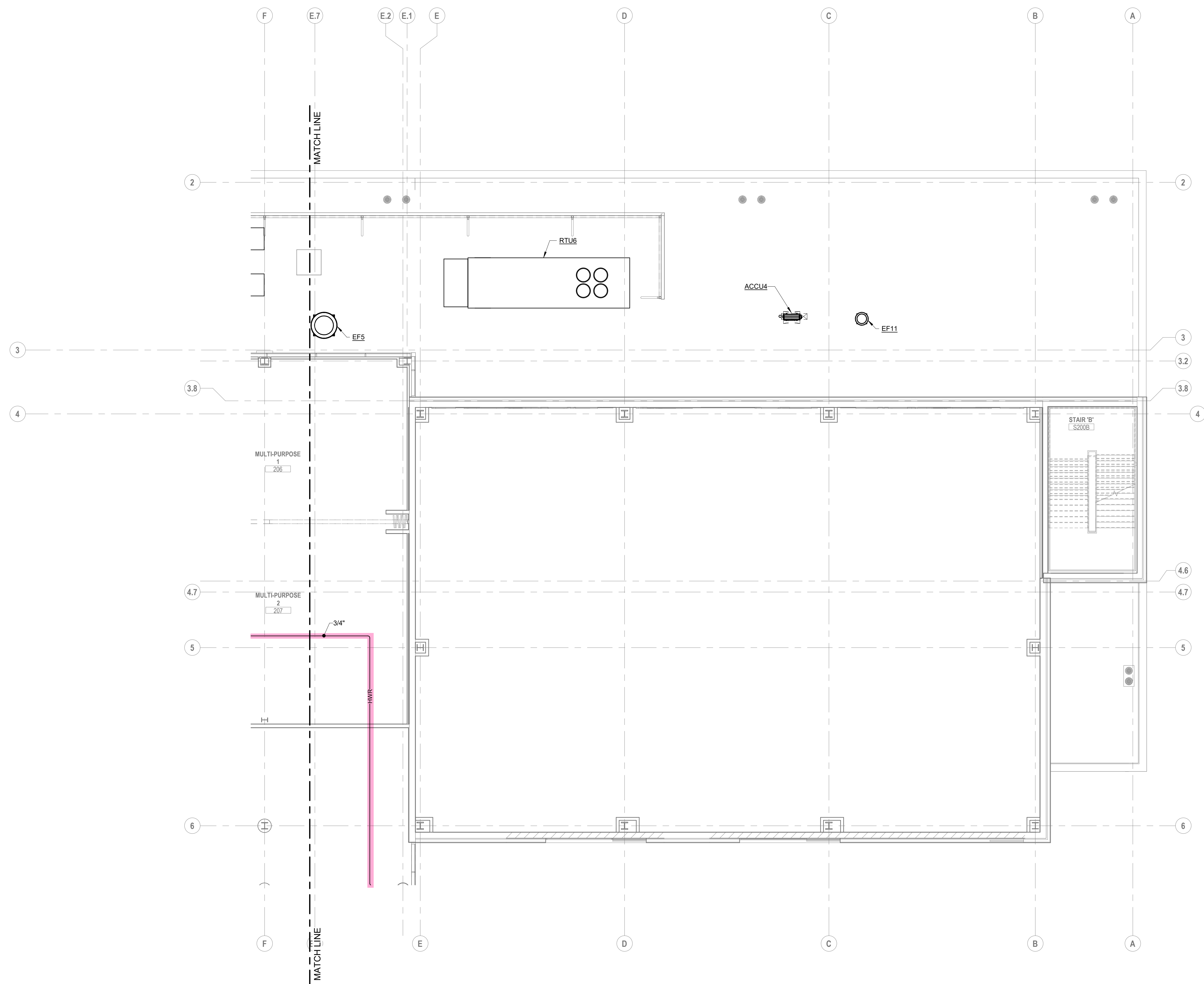
MOODY-NOLAN
300 SPRUCE STREET
SUITE 300
COLUMBUS, OHIO 43215
PHONE: (614) 461-4664
FAX: (614) 280-8881

DRAWING TITLE:
HVAC PIPING SECOND FLOOR
PLAN AREA A

KORDA
KORDA, NEMETH ENGINEERING
1650 WATERMARK DRIVE
SUITE 200
COLUMBUS, OHIO 43215
DRAWN BY: Dave Blach
DESIGNED BY: Dan Edwards/elli
CHECKED BY: Eric Swanson
PROJECT NUMBER: 2018-217

STATE OF OHIO
DANIEL J. EDWARDS
REGISTERED PROFESSIONAL ENGINEER
No. 18218
10-25-21

10/25/21
DRAWN BY: KORDA CHECKED BY: KORDA
Proj. # 18187
H302A
INTERIOR PACKAGE
CONSTRUCTION DOCUMENTS



A FLOOR PLAN
SECOND FLOOR - AREA B

SCALE: 1/8" = 1'-0"
0' 1" 2' 4' 8'

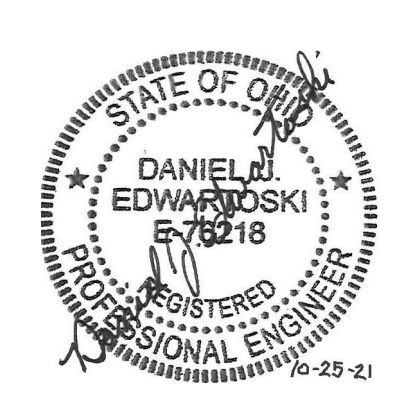
#	DATE	CHANGE DESCRIPTION

The Greater Dayton School
Dwight Park Ct.
DAYTON, OH 45404
FOR
The Connor Group Kids & Community Partners

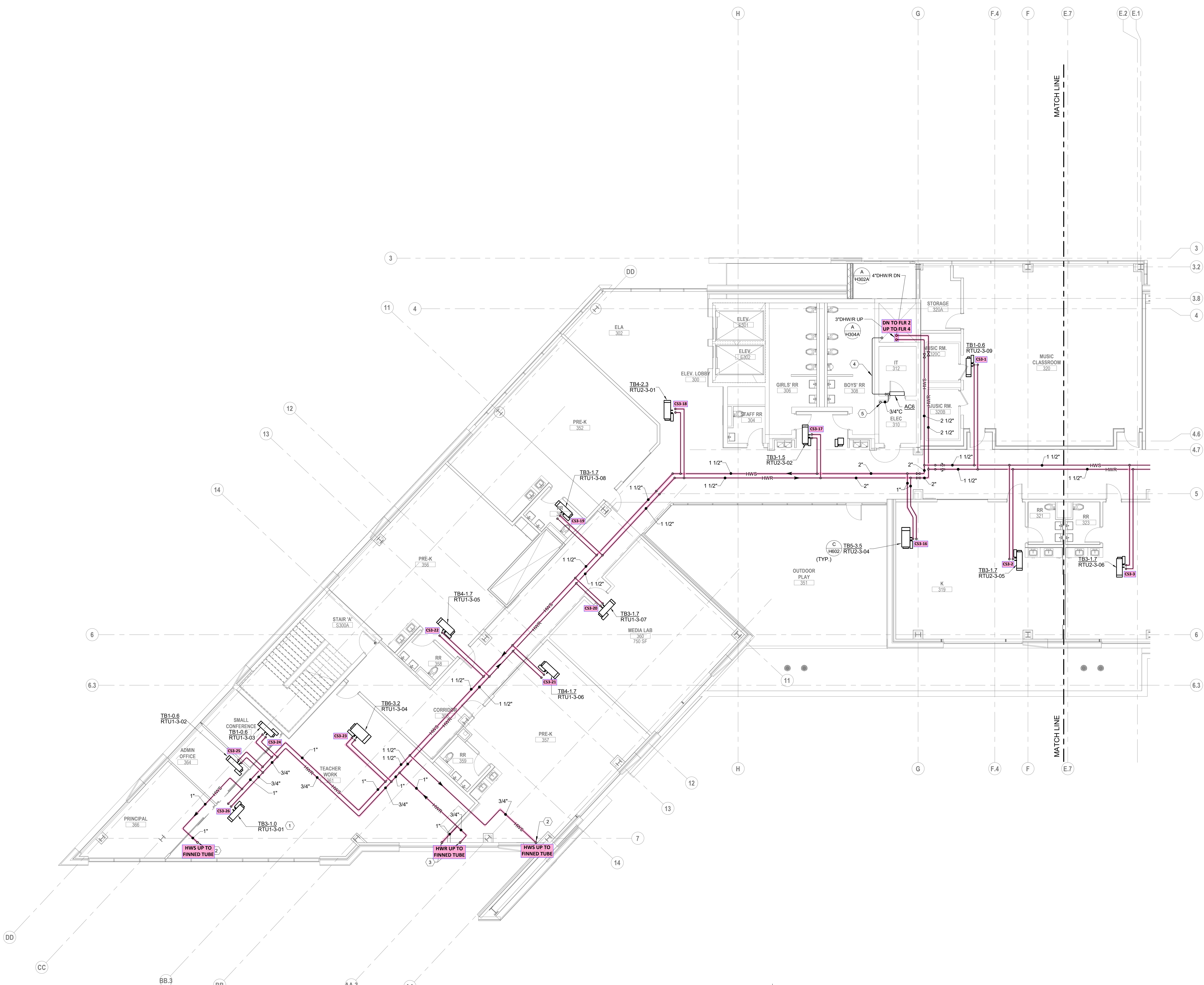
MOODY-NOLAN
300 SPRUCE STREET
SUITE 300
COLUMBUS, OHIO 43215
PHONE: (614) 461-4664
FAX: (614) 280-8881

DRAWING TITLE:
**HVAC PIPING SECOND FLOOR
PLAN AREA B**

KORDA
KORDA, NEMETH ENGINEERING
1650 WATERMARK DRIVE
SUITE 200
COLUMBUS, OHIO 43215
DRAWN BY: Dave Bach
DESIGNED BY: Dan Edwards/MSJ
CHECKED BY: Eric Swanson
PROJECT NUMBER: 2018-217



10/25/21
DRAWN BY: KORDA CHECKED BY: KORDA
Proj. # 18187
H302B
INTERIOR PACKAGE
CONSTRUCTION DOCUMENTS



- CODED NOTES:**
1. PROVIDE 3-WAY VALVE. REFER TO DETAIL AH602.
 2. HWS UP TO FINNED TUBE ABOVE.
 3. HWR UP TO FINNED TUBE ABOVE.
 4. PROVIDE REFRIGERANT LINESET FROM INDOOR UNIT TO OUTDOOR CONDENSER UNIT ON ROOF. SIZE PER MANUFACTURER'S INSTRUCTIONS. SINGLE LINE REPRESENTS BOTH PIPES IN LINESET.
 5. 1" CONDENSATE DRAIN DOWN THROUGH FLOOR OPENING TO BELOW.

A FLOOR PLAN
 THIRD FLOOR - AREA A
 SCALE: 1/8" = 1'-0"
 0' 1/2" 1' 2" 2' 4' 8'

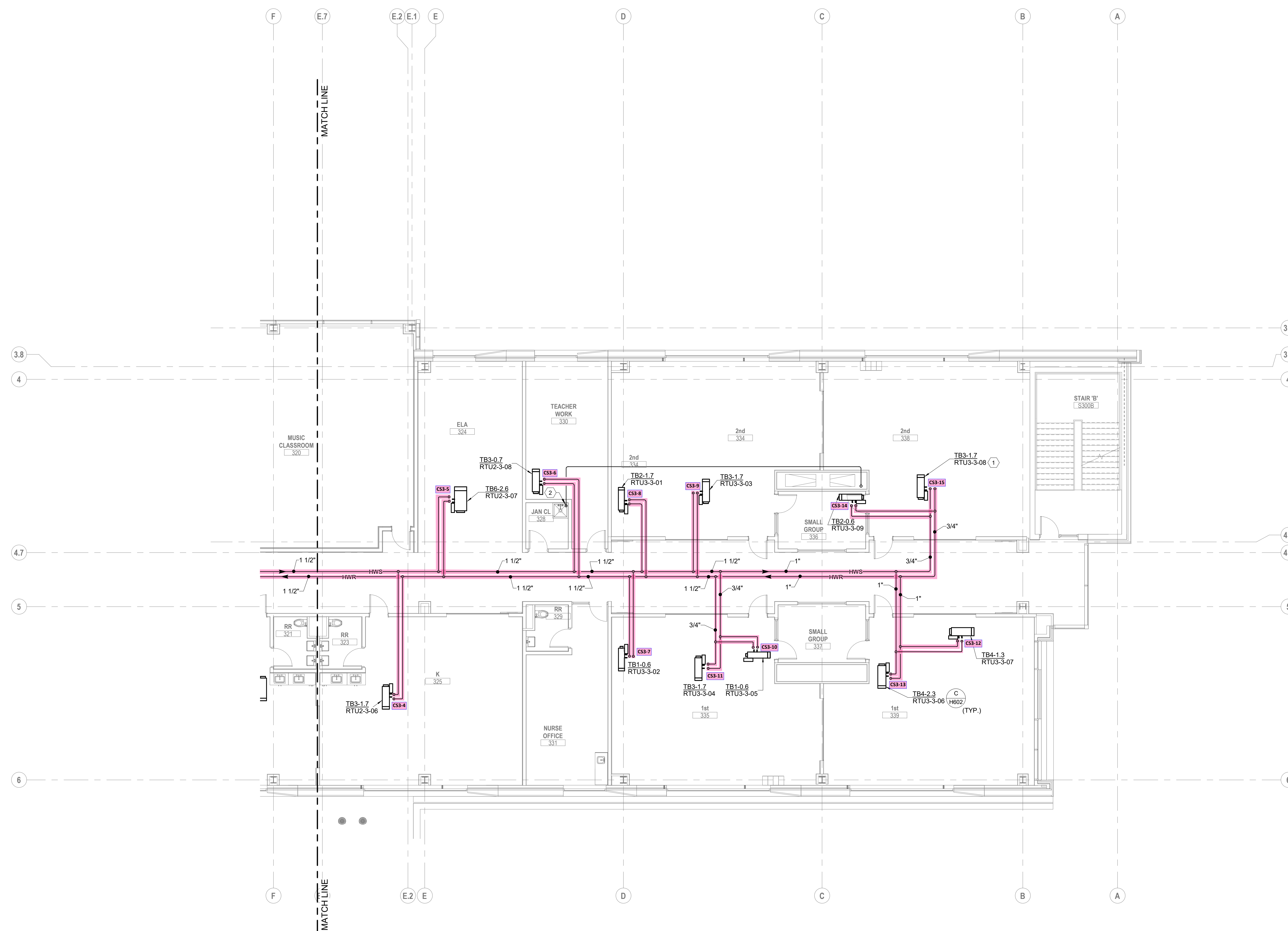
#	DATE	CHANGE DESCRIPTION

	The Greater Dayton School 2000 Park Dr. DAYTON, OH 45404 FOR
	The Connor Group Kids & Community Partners
	300 SPRUCE STREET SUITE 300 COLUMBUS, OHIO 43215 PHONE: (614) 461-4664 FAX: (614) 280-8881

DRAWING TITLE:
HVAC PIPING THIRD FLOOR PLAN AREA A

	KORDA, NEMETH ENGINEERING 1650 WATERMARK DRIVE SUITE 200 COLUMBUS, OHIO 43215 DRAWN BY: Dave Bach DESIGNED BY: Dan Edwards/Ed CHECKED BY: Eric Swanson PROJECT NUMBER: 2018-217
	10/25/21 DRAWN BY: KORDA CHECKED BY: KORDA Proj. # 18187 <h1>H303A</h1> INTERIOR PACKAGE CONSTRUCTION DOCUMENTS

- CODED NOTES:**
1. PROVIDE 3-WAY VALVE. REFER TO DETAIL AH602.
 2. ROUTE CONDENSATE DRAIN DOWN TO MOP SINK.



A FLOOR PLAN
THIRD FLOOR - AREA B

SCALE: 1/8" = 1'-0"
0' 1" 2" 4" 8"

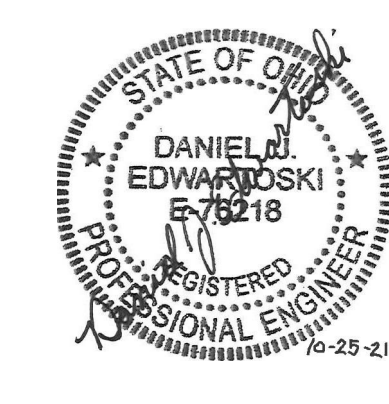
#	DATE	CHANGE DESCRIPTION

The Greater Dayton School
Dwight Park Ct.
DAYTON, OH 45404
FOR
The Connor Group Kids & Community Partners

MOODY-NOLAN
300 SPRUCE STREET
SUITE 300
COLUMBUS, OHIO 43215
PHONE: (614) 461-4664
FAX: (614) 280-8881

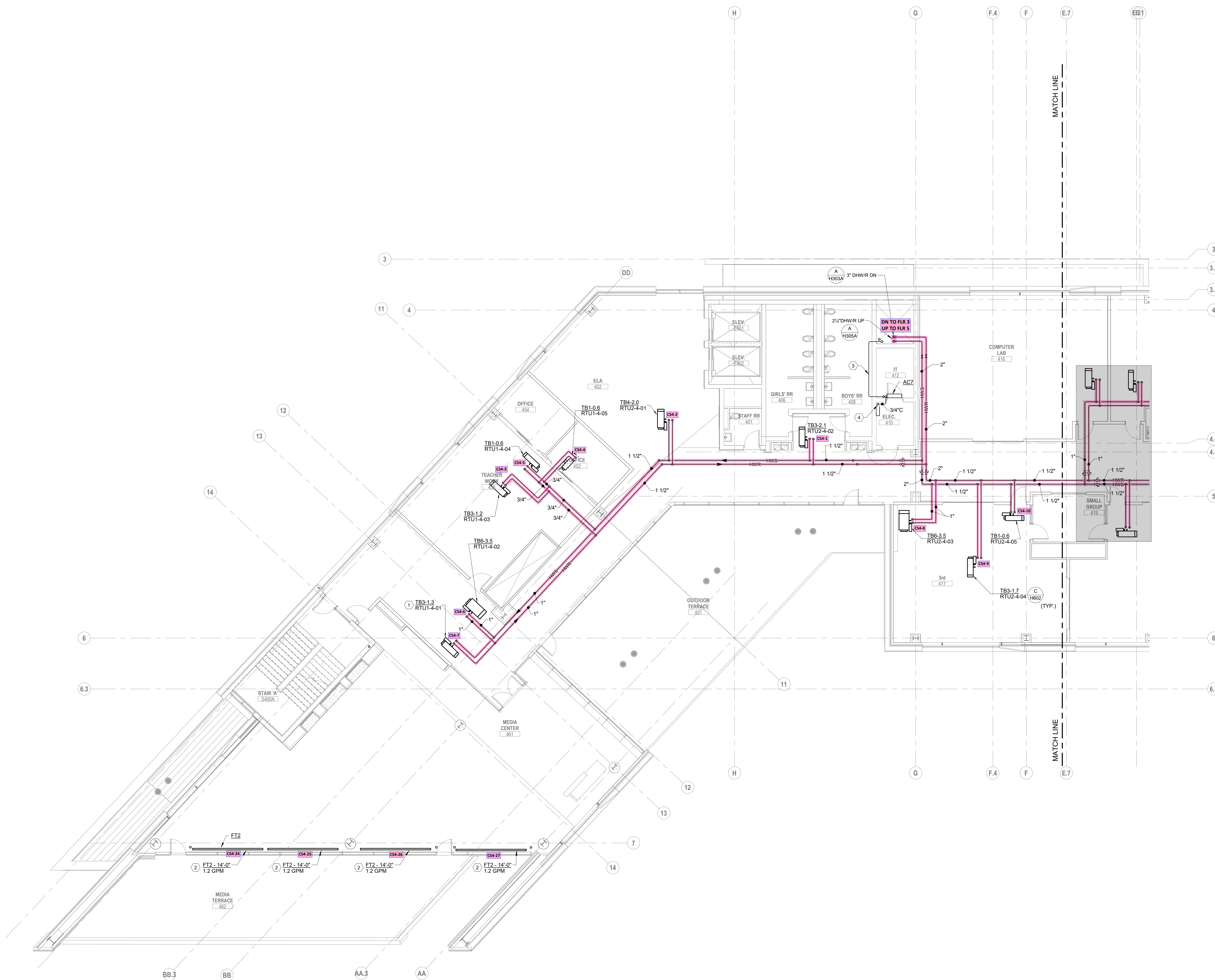
DRAWING TITLE:
**HVAC PIPING THIRD FLOOR
PLAN AREA B**

KORDA
KORDA, NEMETH ENGINEERING
1650 WATERMARK DRIVE
SUITE 200
COLUMBUS, OHIO 43215
DRAWN BY: Dave Blach
DESIGNED BY: Dan Edmister
CHECKED BY: Eric Swenson
PROJECT NUMBER: 2018-217



10/25/21	CHECKED BY: KORDA
Proj. # 18187	
H303B	
INTERIOR PACKAGE CONSTRUCTION DOCUMENTS	

- CODED NOTES:**
1. PROVIDE 3-WAY VALVE. REFER TO DETAIL AH602.
 2. FINNED TUBE HWS & HWR SERVED FROM THIRD FLOOR CEILING.
 3. PROVIDE REFRIGERANT LINESET FROM INDOOR UNIT TO OUTDOOR CONDENSER UNIT ON ROOF. SIZE PER MANUFACTURER'S INSTRUCTIONS. SINGLE LINE REPRESENTS BOTH PIPES IN LINESET.
 4. 1" CONDENSATE DRAIN DOWN THROUGH FLOOR OPENING TO BELOW.



A FLOOR PLAN
 FOURTH FLOOR - AREA A
 SCALE: 1/8" = 1'-0"
 0' 1/2" 1' 2' 2' 4' 8'

#	DATE	CHANGE DESCRIPTION

The Greater Dayton School
 2000 Park Dr.
 DAYTON, OH 45404
 FOR
The Connor Group Kids & Community Partners

MOODY-NOLAN
 300 SPRUCE STREET
 SUITE 300
 COLUMBUS, OHIO 43215
 PHONE: (614) 461-4664
 FAX: (614) 280-8881

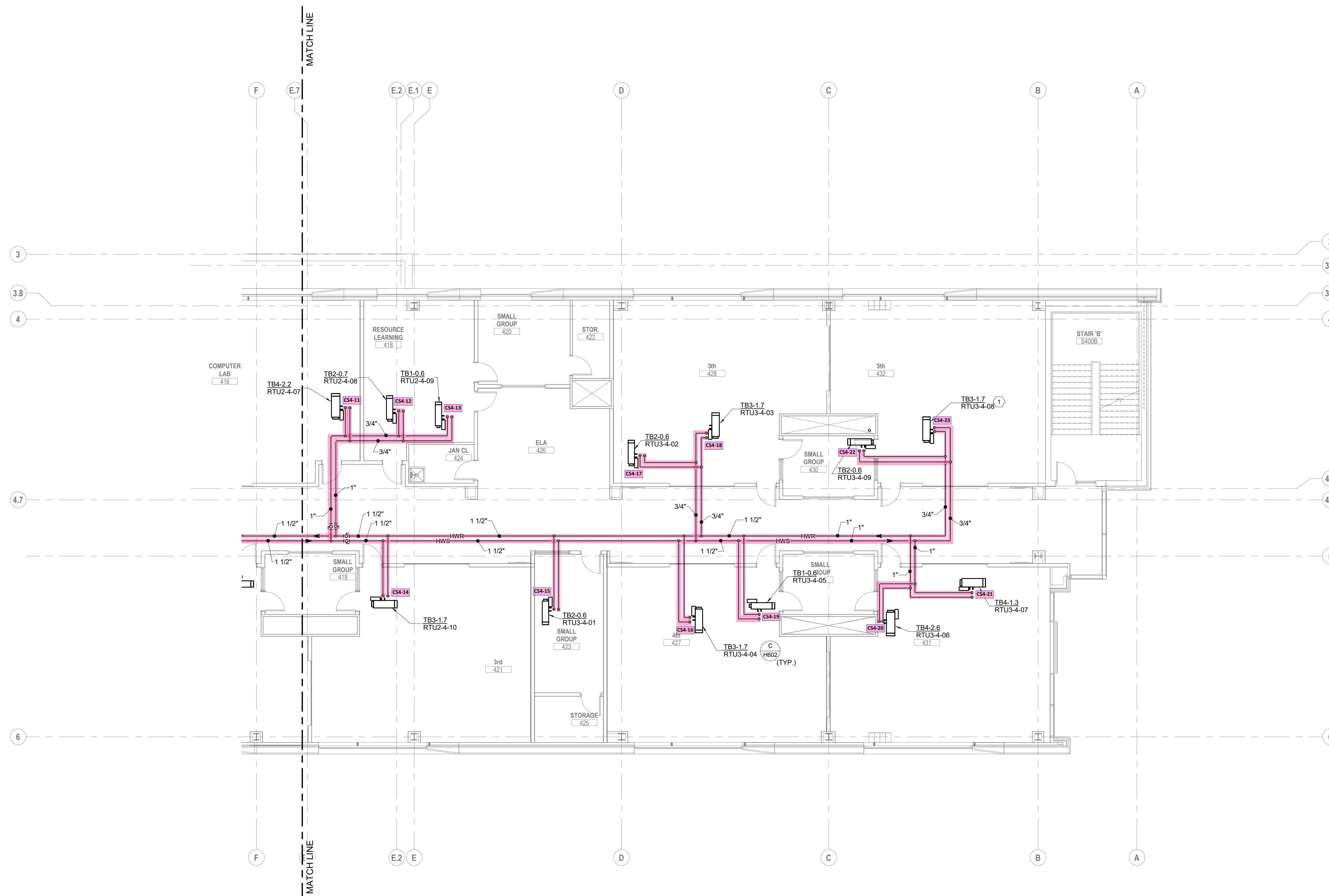
DRAWING TITLE:
HVAC PIPING FOURTH FLOOR PLAN AREA A

10/25/21
 DRAWN BY: KORDA CHECKED BY: KORDA
 Proj. # 18187
H304A
 INTERIOR PACKAGE
 CONSTRUCTION DOCUMENTS

KORDA
 KORDA, NEMETH ENGINEERING
 1650 WATERMARK DRIVE
 SUITE 200
 COLUMBUS, OHIO 43215
 DRAWN BY: Dave Blach
 DESIGNED BY: Dan Edwards
 CHECKED BY: Eric Swanson
 PROJECT NUMBER: 2018-217

DANIEL J. EDWARDS
 REGISTERED PROFESSIONAL ENGINEER
 STATE OF OHIO
 5-78118
 10-25-21

- CODED NOTES:
- PROVIDE 3-WAY VALVE. REFER TO DETAIL AH602.



A FLOOR PLAN
FOURTH FLOOR - AREA B

SCALE: 1/8" = 1'-0"
0' 1" 2" 4" 8"

#	DATE	CHANGE DESCRIPTION

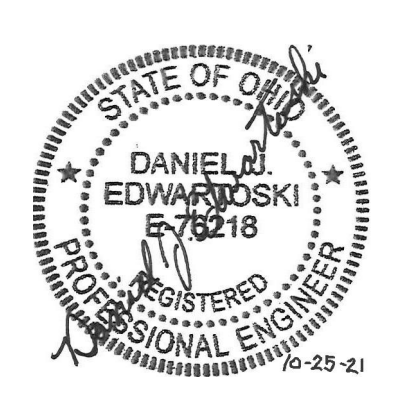
The Greater Dayton School
Dwight Park Dr.
DAYTON, OH 45404
FOR
The Connor Group Kids & Community Partners

MOODY-NOLAN
300 SPRUCE STREET
SUITE 300
COLUMBUS, OHIO 43215
PHONE: (614) 461-4664
FAX: (614) 280-8881

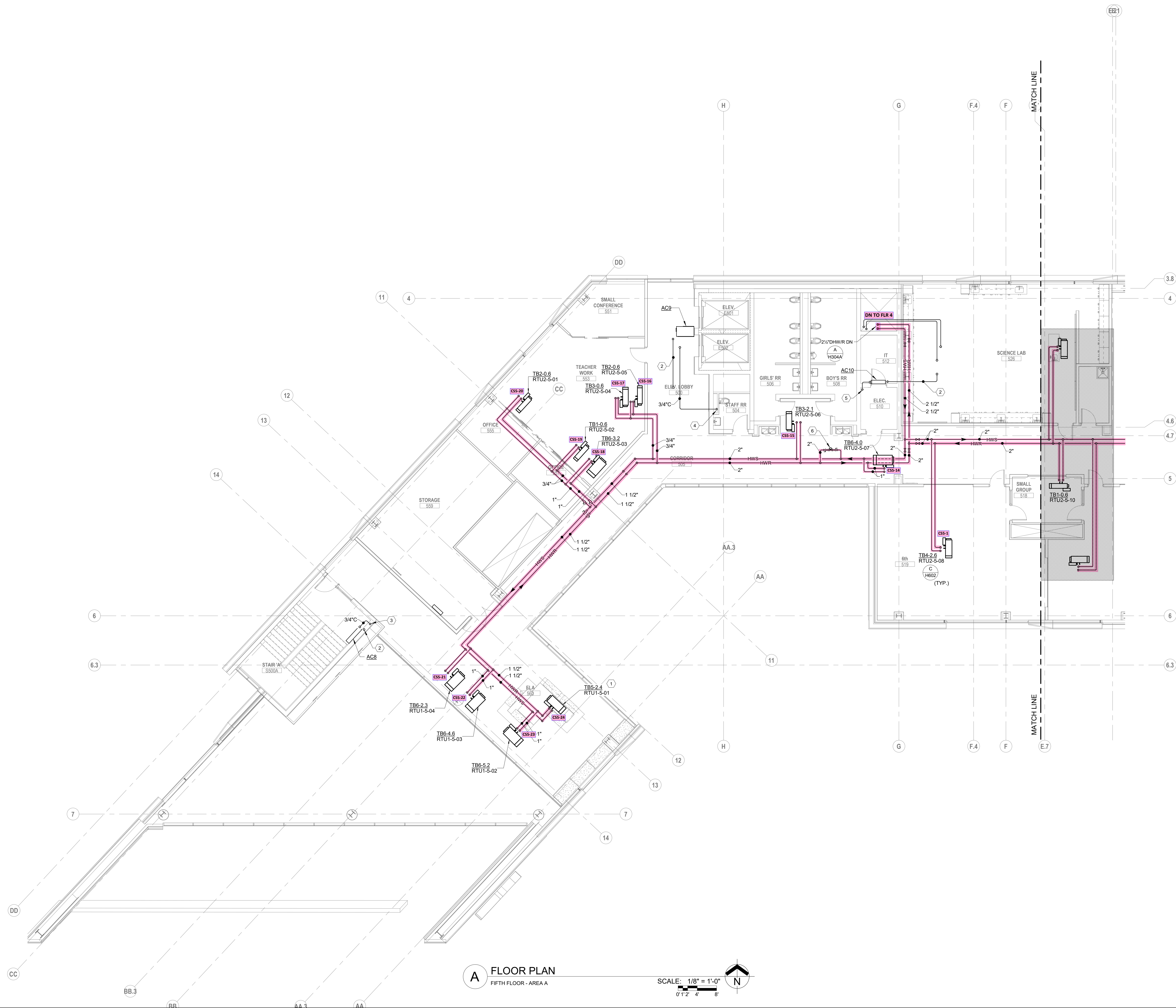
DRAWING TITLE:
**HVAC PIPING FOURTH FLOOR
PLAN AREA B**

10/25/21	CHECKED BY: KORDA
10/25/21	DRAWN BY: KORDA
Proj. # 18187	
H304B	
INTERIOR PACKAGE CONSTRUCTION DOCUMENTS	

KORDA
KORDA, NEWMETH ENGINEERING
1650 WATERMARK DRIVE
SUITE 200
COLUMBUS, OHIO 43215
DRAWN BY: Dave Blach
DESIGNED BY: Dan Edwards/Rob
CHECKED BY: Eric Swanson
PROJECT NUMBER: 2018-217



- CODED NOTES:**
1. PROVIDE 3-WAY VALVE. REFER TO DETAIL AH602.
 2. PROVIDE REFRIGERANT LINESET FROM INDOOR UNIT TO OUTDOOR CONDENSER UNIT ON ROOF. SIZE PER MANUFACTURER'S INSTRUCTIONS. SINGLE LINE REPRESENTS BOTH PIPES IN LINESET.
 3. ROUTE CONDENSATE DRAIN DOWN TO BELOW.
 4. ROUTE CONDENSATE DRAIN DOWN TO WALL BOX.
 5. 3/4" CONDENSATE DRAIN DOWN THROUGH FLOOR OPENING TO BELOW.
 6. MINIMUM FLOW MODULATING TWO-WAY BYPASS VALVE.



A FLOOR PLAN
 FIFTH FLOOR - AREA A
 SCALE: 1/8" = 1'-0"
 0" 1" 2" 4" 8"

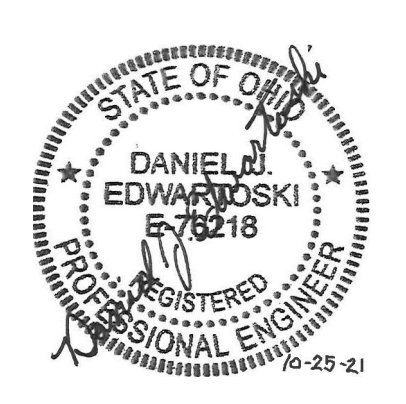
#	DATE	CHANGE DESCRIPTION

The Greater Dayton School
 Deeds Park Dr.
 DAYTON, OH 45404
 FOR
The Connor Group Kids & Community Partners

MOODY-NOLAN
 300 SPRUCE STREET
 SUITE 300
 COLUMBUS, OHIO 43215
 PHONE: (614) 461-4664
 FAX: (614) 280-8881

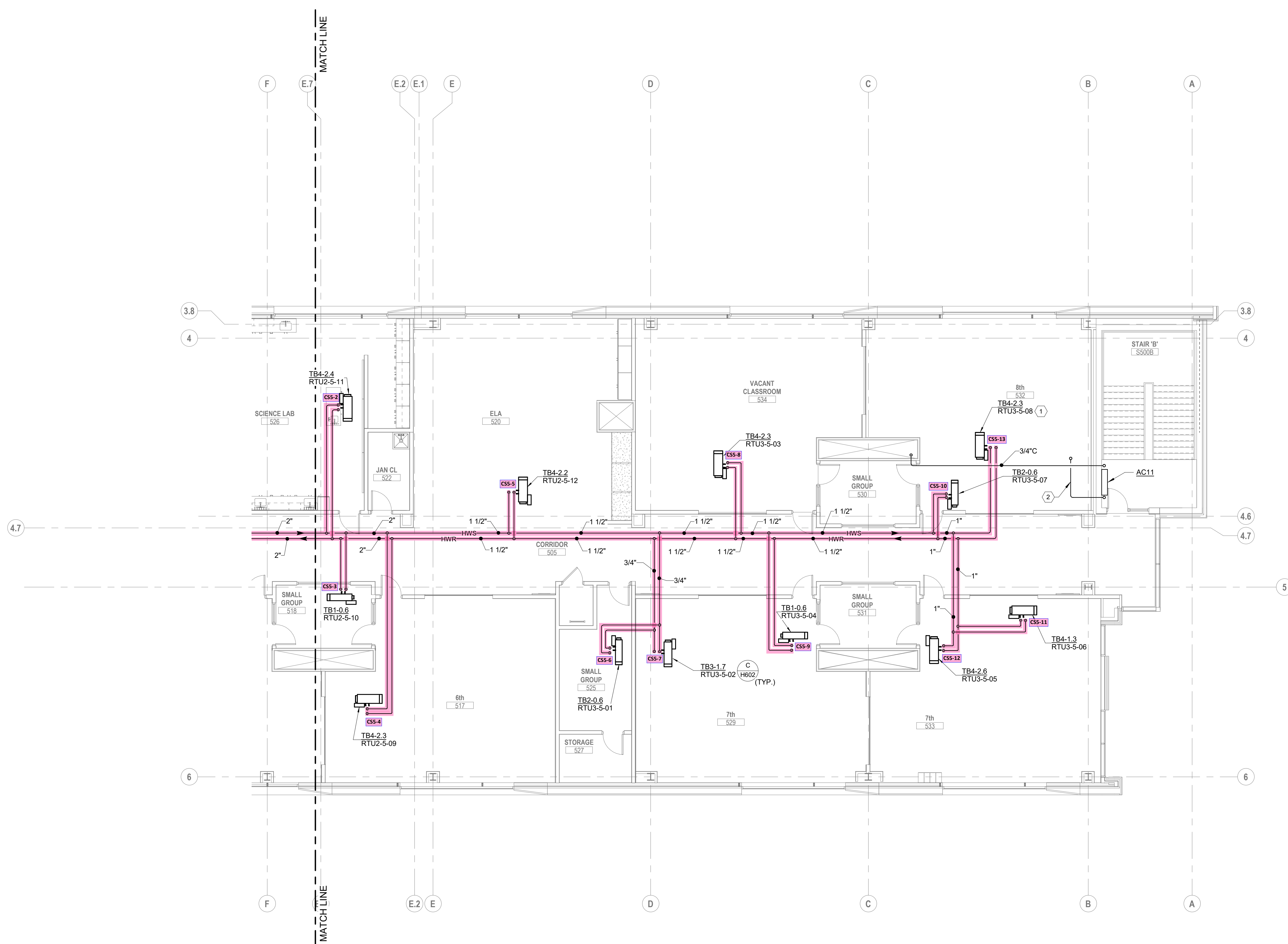
DRAWING TITLE:
**HVAC PIPING FIFTH FLOOR
 PLAN AREA A**

KORDA
 KORDA, NEMETH ENGINEERING
 1650 WATERMARK DRIVE
 SUITE 200
 COLUMBUS, OHIO 43215
 DRAWN BY: Dave Blach
 DESIGNED BY: Dan Edwards
 CHECKED BY: Eric Swanson
 PROJECT NUMBER: 2018-217



10/25/21	CHECKED BY: KORDA
Proj. # 18187	
H305A	
INTERIOR PACKAGE CONSTRUCTION DOCUMENTS	

- CODED NOTES:**
1. PROVIDE 3-WAY VALVE. REFER TO DETAIL AH602.
 2. PROVIDE REFRIGERANT LIASET FROM INDOOR UNIT TO OUTDOOR CONDENSER UNIT ON ROOF. SIZE PER MANUFACTURER'S INSTRUCTIONS. SINGLE LINE REPRESENTS BOTH PIPES IN LIASET.



A FLOOR PLAN
FIFTH FLOOR - AREA B
SCALE: 1/8" = 1'-0"
0' 1" 2" 4" 8"

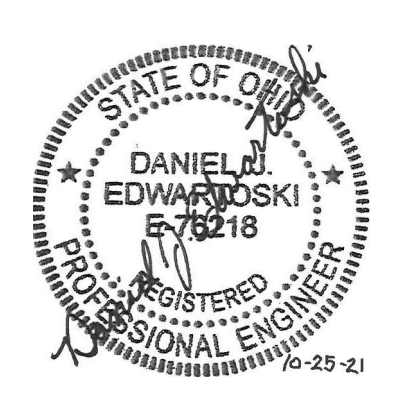
#	DATE	CHANGE DESCRIPTION

The Greater Dayton School
Dwight Park Ct.
DAYTON, OH 45404
FOR
The Connor Group Kids & Community Partners

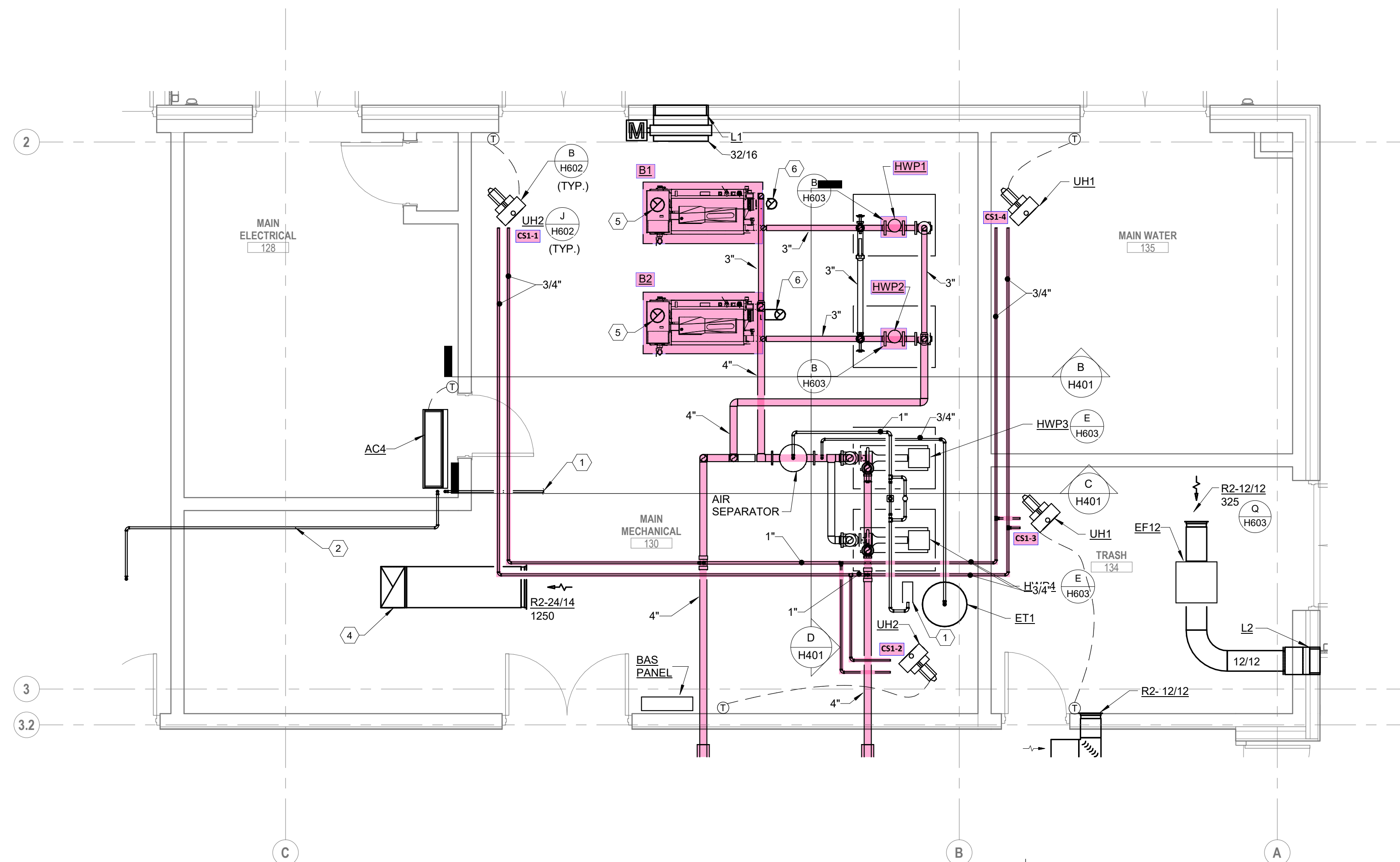
MOODY-NOLAN
300 SPRUCE STREET
SUITE 300
COLUMBUS, OHIO 43215
PHONE: (614) 461-4664
FAX: (614) 280-8881

DRAWING TITLE:
**HVAC PIPING FIFTH FLOOR
PLAN AREA B**

KORDA
KORDA, NEMETH ENGINEERING
1650 WATERMARK DRIVE
SUITE 200
COLUMBUS, OHIO 43215
DRAWN BY: Dave Blach
DESIGNED BY: Dan Edwards/MSJ
CHECKED BY: Eric Swanson
PROJECT NUMBER: 2018-217

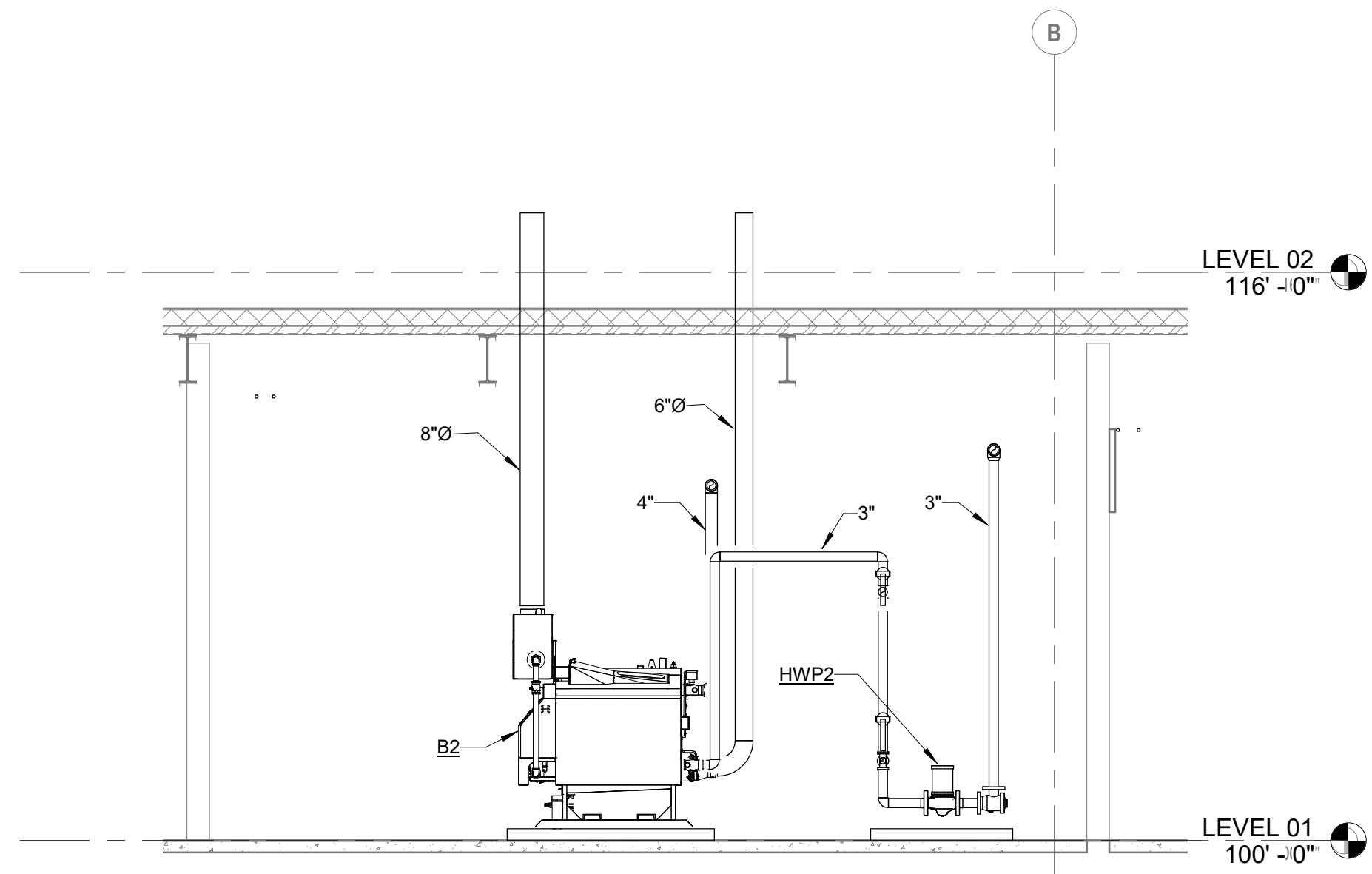


10/25/21	CHECKED BY: KORDA
Proj. # 18187	
H305B	
INTERIOR PACKAGE CONSTRUCTION DOCUMENTS	

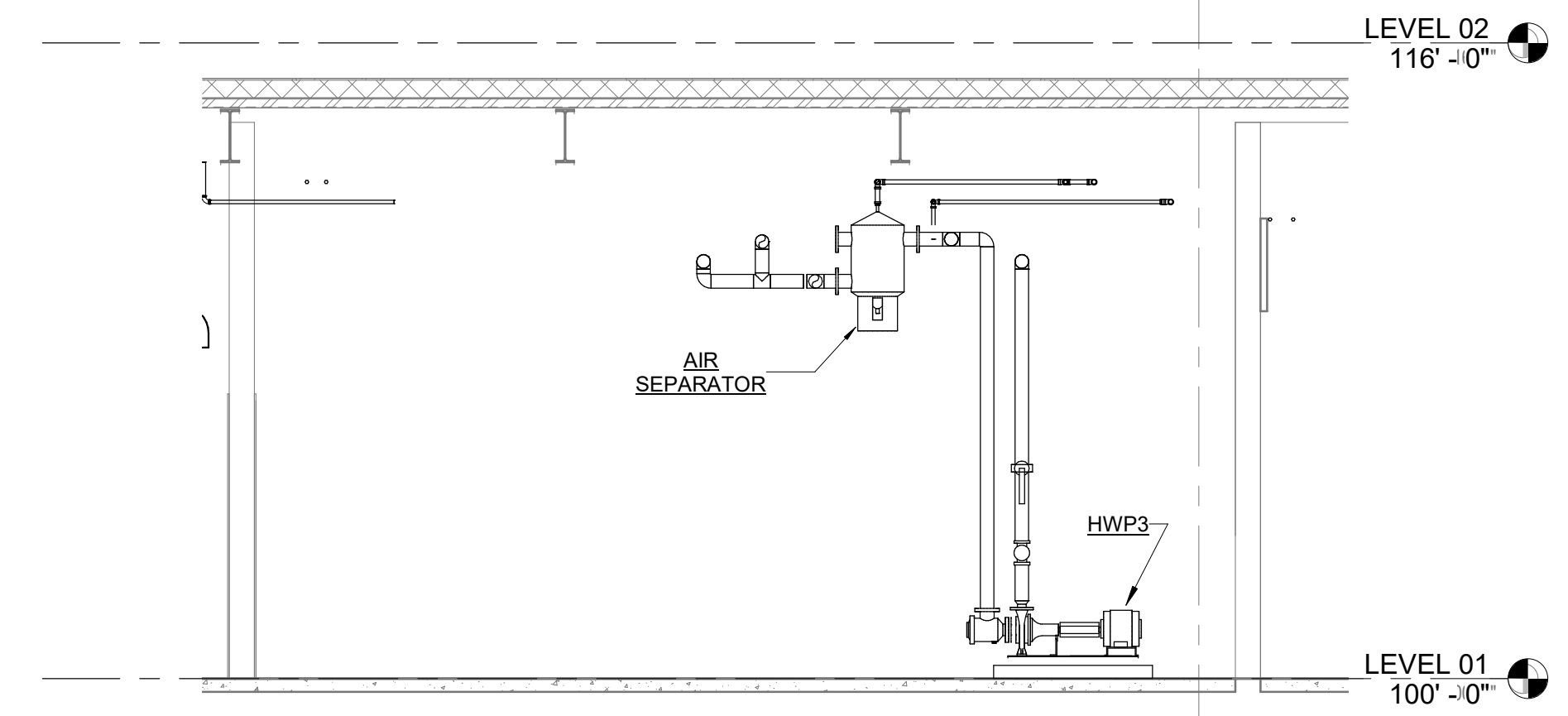


- CODED NOTES:**
1. APPROXIMATE LOCATION OF BACKFLOW PREVENTER BY PLUMBING CONTRACTOR. COORDINATE FINAL LOCATION IN FIELD. ALL PIPING DOWNSTREAM OF BACKFLOW PREVENTER SHALL BE BY THE HVAC CONTRACTOR.
 2. PROVIDE REFRIGERANT LINESET FROM INDOOR UNIT TO OUTDOOR CONDENSER UNIT ON ROOF. SIZE PER MANUFACTURER'S INSTRUCTIONS. SINGLE LINE REPRESENTS BOTH PIPES IN LINESET.
 3. ROUTE 3/4" CONDENSATE DRAIN TO NEAREST FLOOR DRAIN. TERMINATE WITH 2" AIR GAP.
 4. UP TO EF11 ON ROOF.
 5. 8 INCH COMBUSTION AIR UP THROUGH ROOF TO ITAKE GOOSENECK.
 6. 6 INCH BOILER FLUE UP THROUGH ROOF.

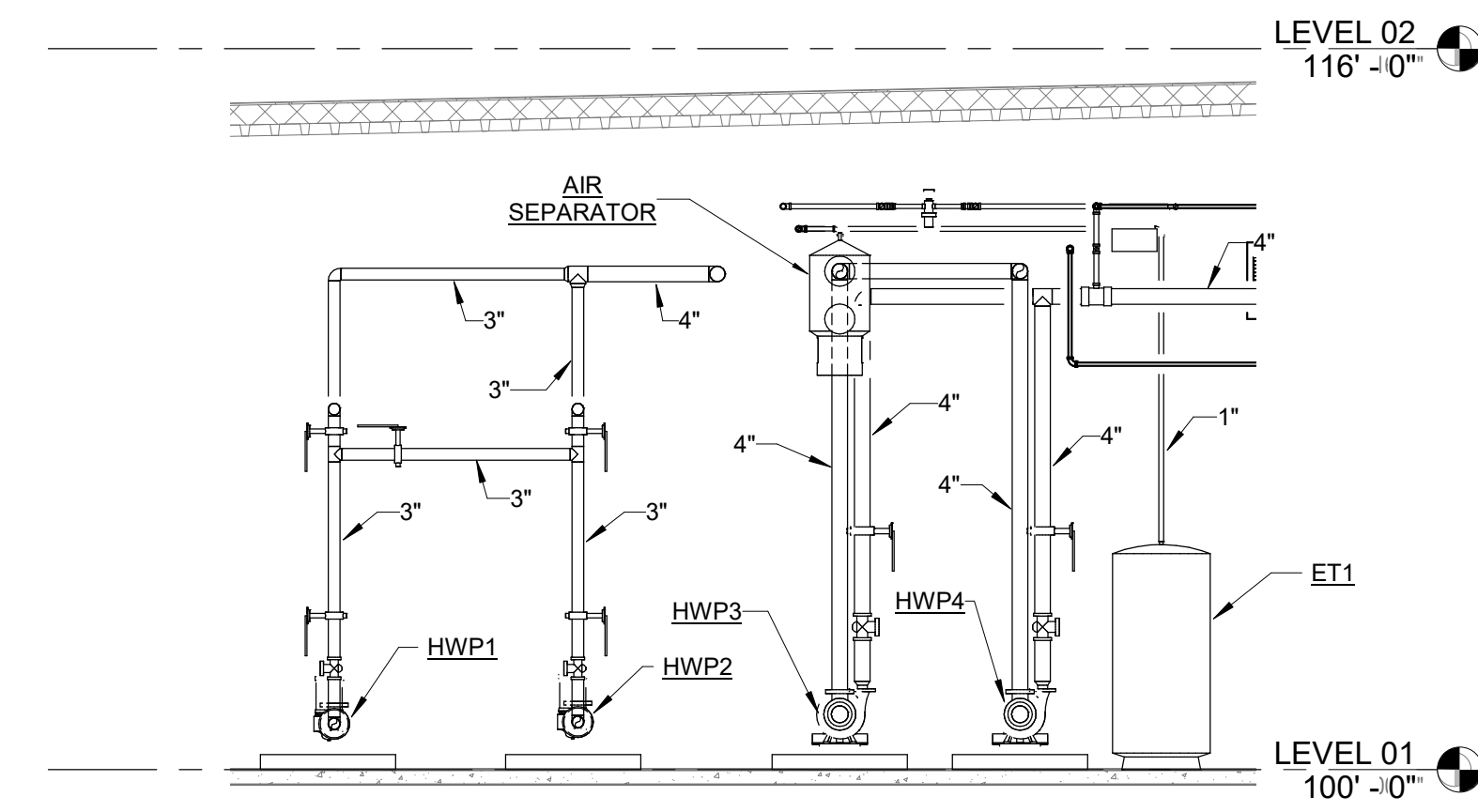
A ENLARGED PLAN
FIRST FLOOR MECHANICAL ROOM
SCALE: 1/4" = 1'-0"
0 1 2 4



B SECTION
B/H401
SCALE: 1/4" = 1'-0"
0 1 2 4



C SECTION
C/H401
SCALE: 1/4" = 1'-0"
0 1 2 4



D D/H401
SCALE: 1/4" = 1'-0"
0 1 2 4

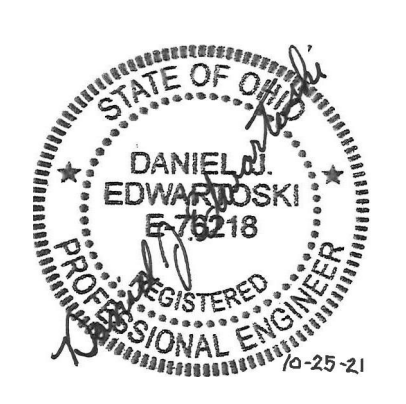
#	DATE	CHANGE DESCRIPTION

The Greater Dayton School
Dwight Park Dr.
DAYTON, OH 45404
FOR
The Connor Group Kids & Community Partners

MOODY-NOLAN
300 SPRUCE STREET
SUITE 300
COLUMBUS, OHIO 43215
PHONE: (614) 461-4664
FAX: (614) 280-8881

DRAWING TITLE:
HVAC ENLARGED PLANS & SECTIONS

KORDA
KORDA NEMETH ENGINEERING
1650 WATERMARK DRIVE
SUITE 200
COLUMBUS, OHIO 43215
DRAWN BY: Dave Bach
DESIGNED BY: Dan Edmister
CHECKED BY: Eric Swenson
PROJECT NUMBER: 2018-217



10/25/21	CHECKED BY: KORDA
Proj. # 18187	
H401	
INTERIOR PACKAGE	CONSTRUCTION DOCUMENTS