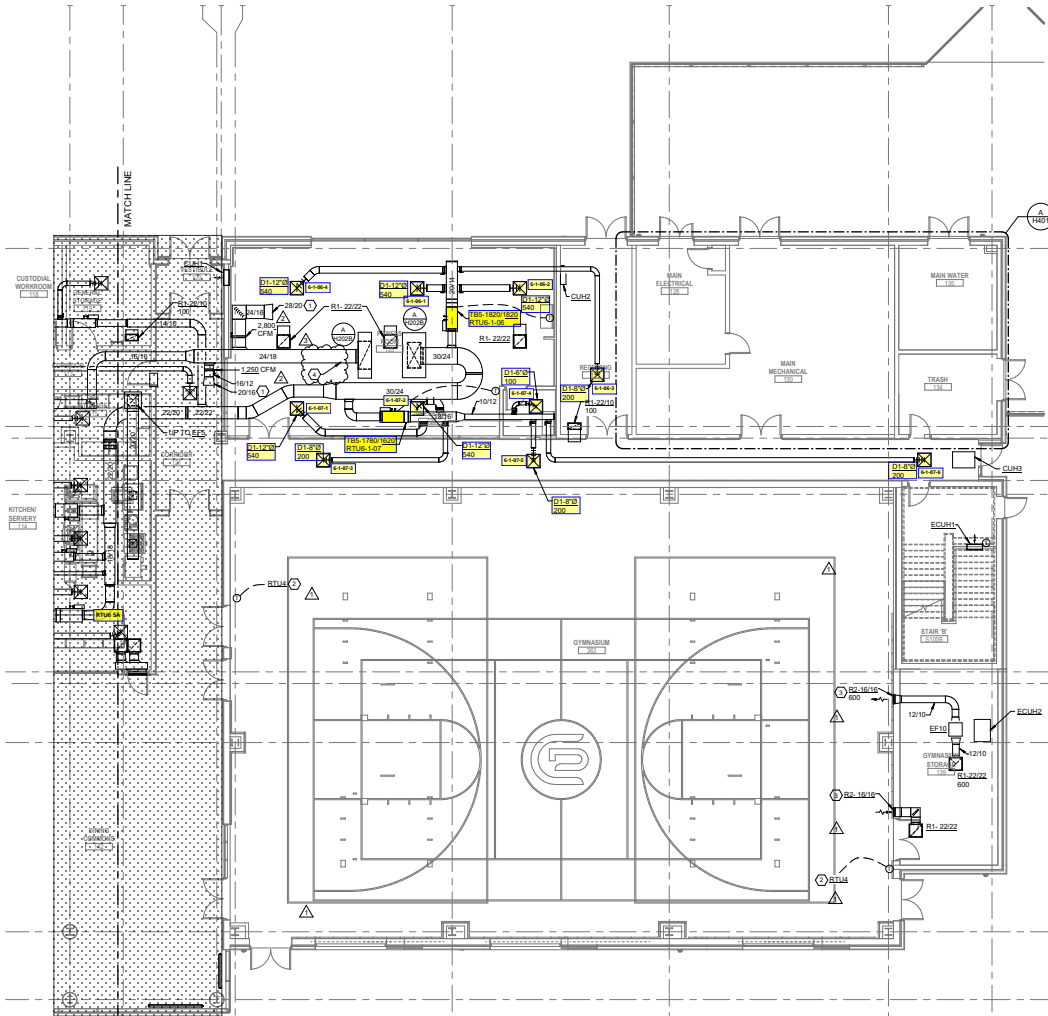
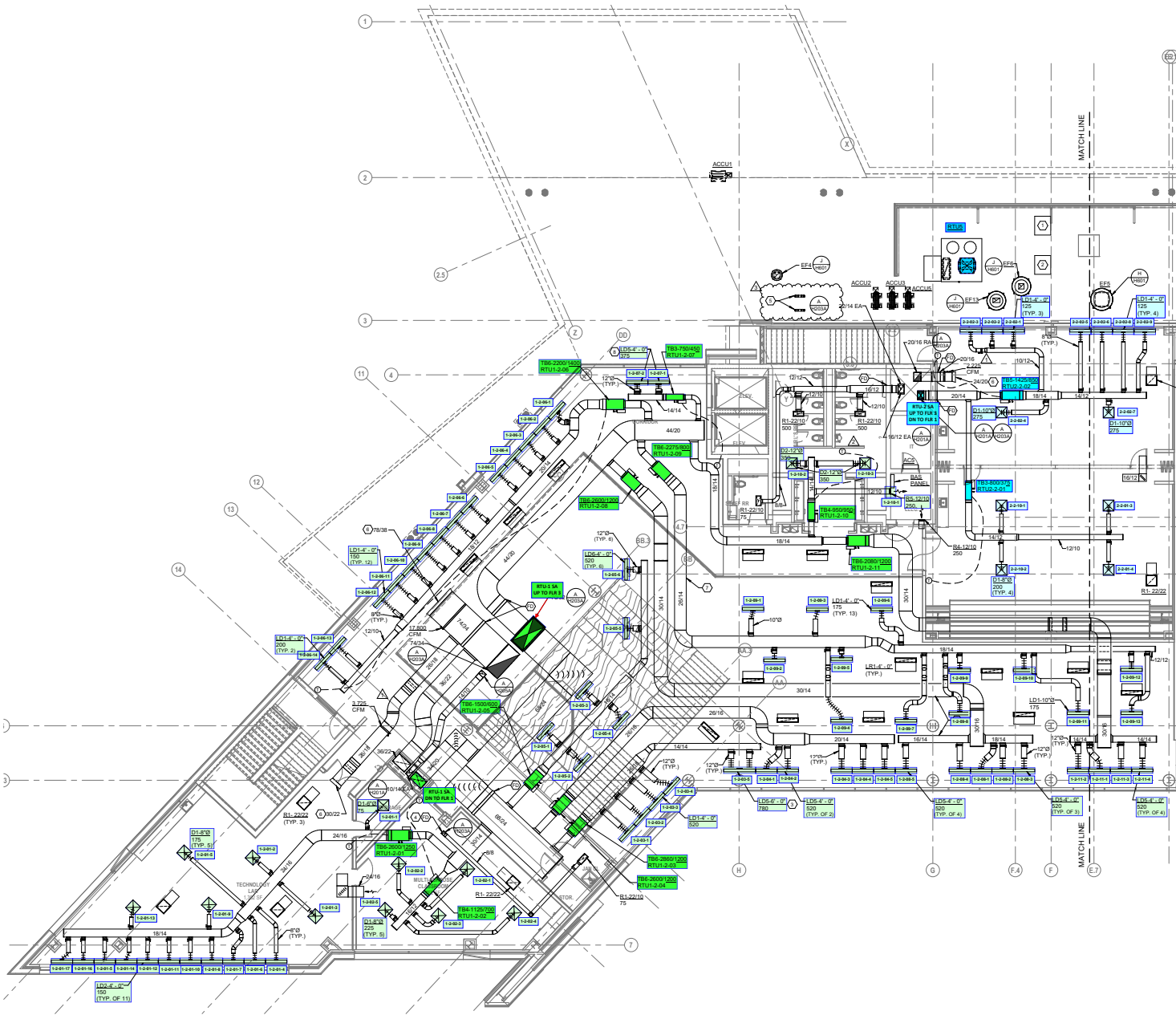


**CODED NOTES**

1. PROVIDE SKITT ENVIRONMENT FAN CAPABLE OF EXHAUST 140 CFM THROUGH UP TO 80' OF 4" DUCT WITH THREE 90 DEGREE BENDS. MOUNT THE FAN TO THE WALL BEHIND THE KLN AND WITHIN 6" OF THE KLN. RUN 2" FLEXIBLE ALUMINUM DUCT BETWEEN THE KLN AND THE FAN. RUN 4" PVC FROM THE FAN TO THE EXTERIOR OF THE BUILDING. FAN PLUGS INTO WALL RECEPTACLE AND IS MANUALLY TURNED ON WITH INTERNAL SWITCH. REFER TO KLN MANUFACTURER'S INSTALLATION INSTRUCTIONS.
2. LOCATE FIRE DAMPER IN DUCT PENETRATION AT BOTTOM OF RATED SHAFT.
3. NOT USED.
4. 6" DIAMETER LAUNDRY VENT UP THROUGH ROOF. COORDINATE FINAL LOCATIONS WITH ARCHITECT.
5. LINEAR AIR DEVICE IN SIDEWALL WITH PLENUM. TAP OFF MAIN WITH DAMPER AND CONNECT TO BOTTOM OF LINEAR AIR DEVICE PLENUM. COORDINATE EXACT LOCATION, ELEVATION AND FINISH COLOR OF AIR DEVICE WITH ARCHITECT.
6. INSTALL WALL HUNG AC2 BELOW CABLE TRAY ON WEST WALL OF IT ROOM. TOP OF UNIT SHALL BE 6'-0" A.F.F.
7. INSTALL WALL HUNG AC2 ABOVE DOOR ON SOUTH WALL OF IT ROOM.
8. 2020 UP TO KITCHEN HOOD EXHAUST FAN E4E ON ROOF. PROVIDE GREASE DUCT CLEANOUT AT BOTTOM OF VERTICAL. PROVIDE GREASE TRAP.
9. 1610 UP TO EXHAUST FAN E4E ON ROOF.
10. 1212 UP TO EXHAUST FAN E4E ON ROOF.
11. PROVIDE PANT LEG DUCT FITTING. LEGS SHALL BE 1616. MAKE CONNECTION TO D) CONNECTIONS ON TOP OF DISHWASHER.
12. PROVIDE TAPS OFF EXHAUST MAIN TO CONNECT TO D) 1514 CONNECTIONS ON GREASE HOOD. PROVIDE GREASE DUCT CLEANOUTS AT TAPS.
13. PROVIDE MOTORIZED DAMPER AND BALANCE DAMPER. BALANCE TO 800 CFM. MOTORIZED DAMPER TO REMAIN CLOSED DURING KITCHEN HOOD OPERATION. OPEN WHEN HOOD IS NOT IN OPERATION.
14. 2424 TRANSFER DUCT.
15. TERMINATE KLN EXHAUST DUCT THROUGH EXTERIOR WALL. PROVIDE CORROSION RESISTANT ALUMINUM ROUND DUCT WALL CAP WITH INTERNAL ALUMINUM BACKDRAFT DAMPER. FINISH WALL CAP TO MATCH ADJACENT EXTERIOR FINISH. COORDINATE EXACT LOCATION WITH ARCHITECT.
16. BELLMOUTH OPENING FOR RETURN AIR PLENUM.
17. 1610 UP TO EXHAUST FAN E4A ON ROOF.
18. UP TO RTU5.
19. PROVIDE CABLE OPERATED DAMPER FOR ACCESS.
20. PROVIDE SHEETMETAL PLENUM BEHIND LOUVER.
21. SMOKE DETECTOR TO BE PROVIDED BY DIVISION 26.

- CODED NOTES:**
1. BELLMOUTH OPENING FOR RETURN AIR FLEXIAL.
  2. INSTALL TEMPERATURE SENSOR BOTTOM OF DEVICE BY A.F.F. COORDINATE LOCATION OF SENSOR WITH ARCHITECTURAL ELEVATIONS. INSTALL CONDUIT IN WALL. EXPOSED CONDUIT IS NOT ACCEPTABLE.
  3. COORDINATE LOCATION OF SIDEWALL GRILLE WITH ARCHITECTURAL ELEVATIONS.
  4. SMOKE DETECTOR TO BE PROVIDED BY DIVISION 5.

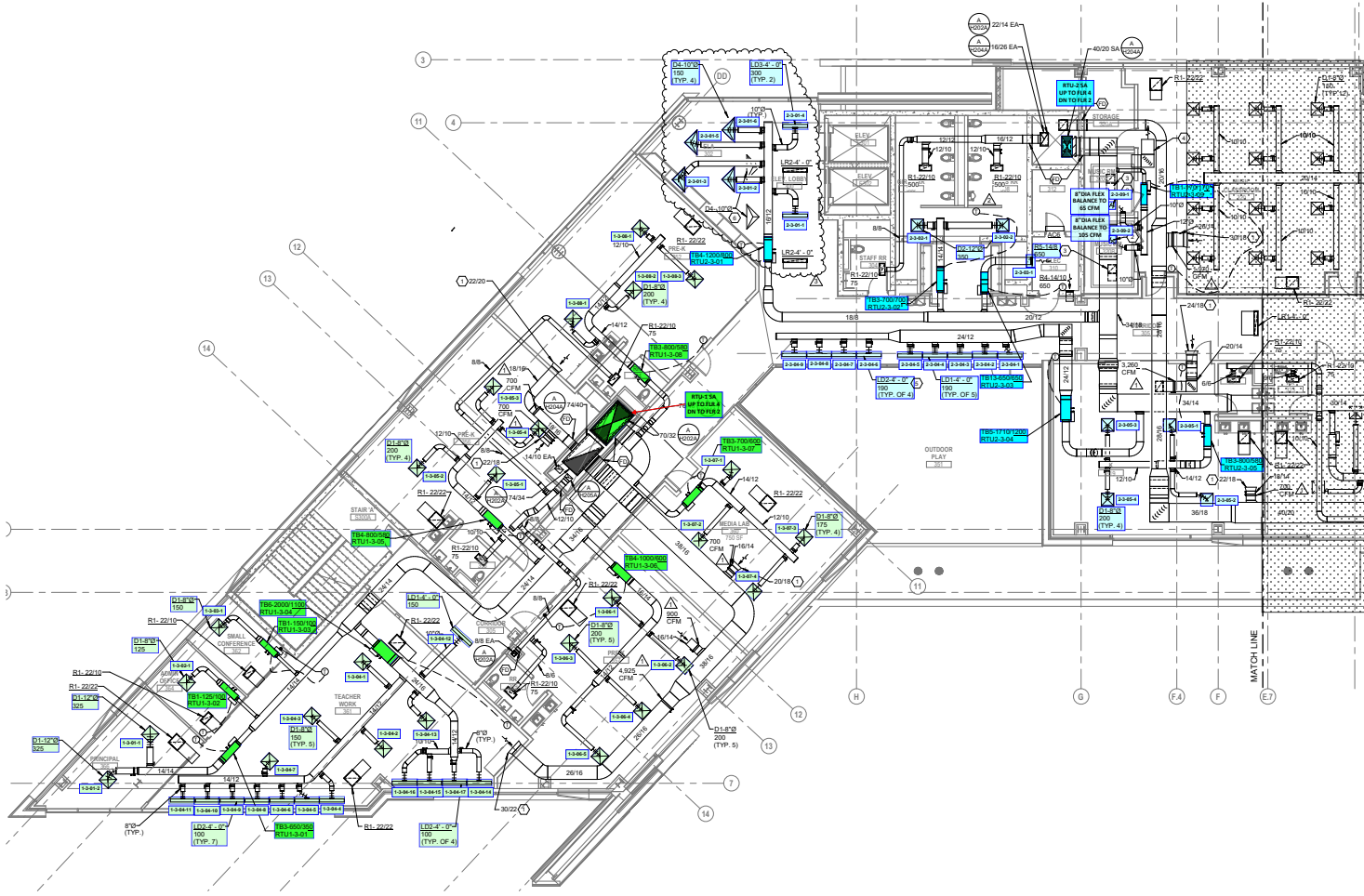




- COORDINATED NOTES:**
1. WALK IN FREEZER CONDENSING UNIT BY KITCHEN EQUIPMENT CONTRACTOR. LOCATION SHOWN FOR COORDINATION WITH MECHANICAL EQUIPMENT.
  2. WALK IN COOLER CONDENSING UNIT BY KITCHEN EQUIPMENT CONTRACTOR. LOCATION SHOWN FOR COORDINATION WITH MECHANICAL EQUIPMENT.
  3. SINGLE LINEAR DEVICE WITH TWO 12" TAPS INTO PLENUM.
  4. LOCATE FIRE DAMPER IN DUCT AT BOTTOM OF SHAFT.
  5. TERMINATE LAUNDRY VENT WITH GOOSENECK AND BIRDSCREEN MINIMUM 14" ABOVE FINISHED FLOOR.
  6. BELLMOUTH OPENING FOR RETURN AIR PLENUM.
  7. ALL EXPOSED DUCTWORK ABOVE BAFFLE AND CLOUD CEILINGS TO BE PAINTED. FINISH COLOR TO BE COORDINATED WITH ARCHITECT.
  8. PROVIDE CABLE OPERATED DAMPER FOR ACCESS.



- CODED NOTES:**
- BELLMOUTH OPENING FOR RETURN AIR PLENUM.
  - 8" DIAMETER FLEX CONNECTION TO WENGER SOUND BOOTH. BALANCE NORTH BOOTH 200C TO 65 CFM. BALANCE SOUTH BOOTH 300B TO 105 CFM. COORDINATE EXACT LOCATIONS WITH EQUIPMENT.
  - 8" DIAMETER RETURN DUCT CONNECTION TO WENGER SOUND BOOTH. TRANSITION TO 1616 RECTANGULAR RETURN BOOT WITH INTERNAL LINING. COORDINATE EXACT LOCATIONS WITH EQUIPMENT.
  - 2412 RETURN TRANSFER DUCT.
- PROVIDE CABLE OPERATED DAMPER FOR ACCESS.  
RETURN AIR TERMINALS TO RELIEVE AIR TO PLENUM. DO NOT OBSTRUCT DUCT CONNECTION.



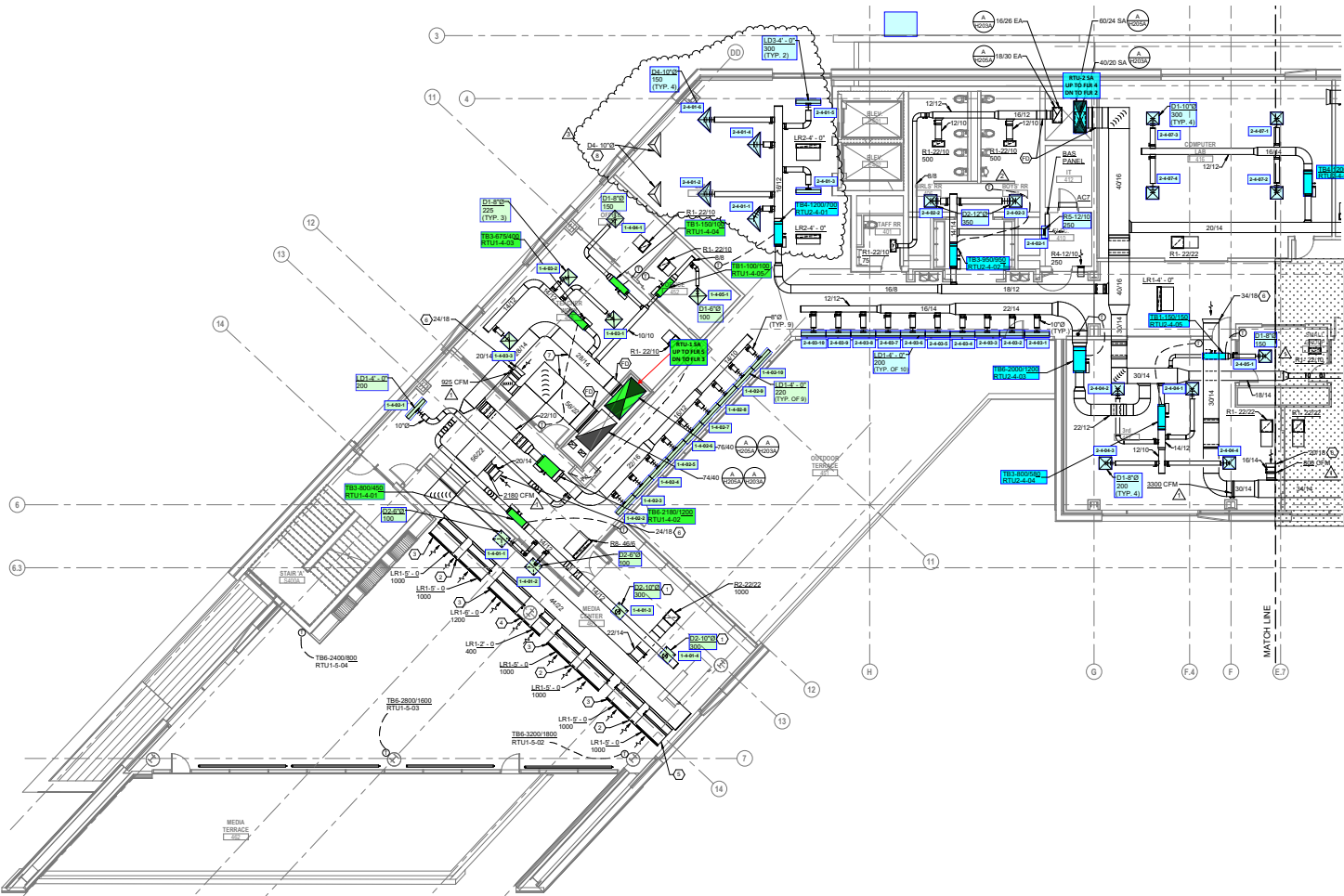
**A FLOOR PLAN**  
THIRD FLOOR - AREA A



**Greater Dayton School BP2 (Dayton, OH)**

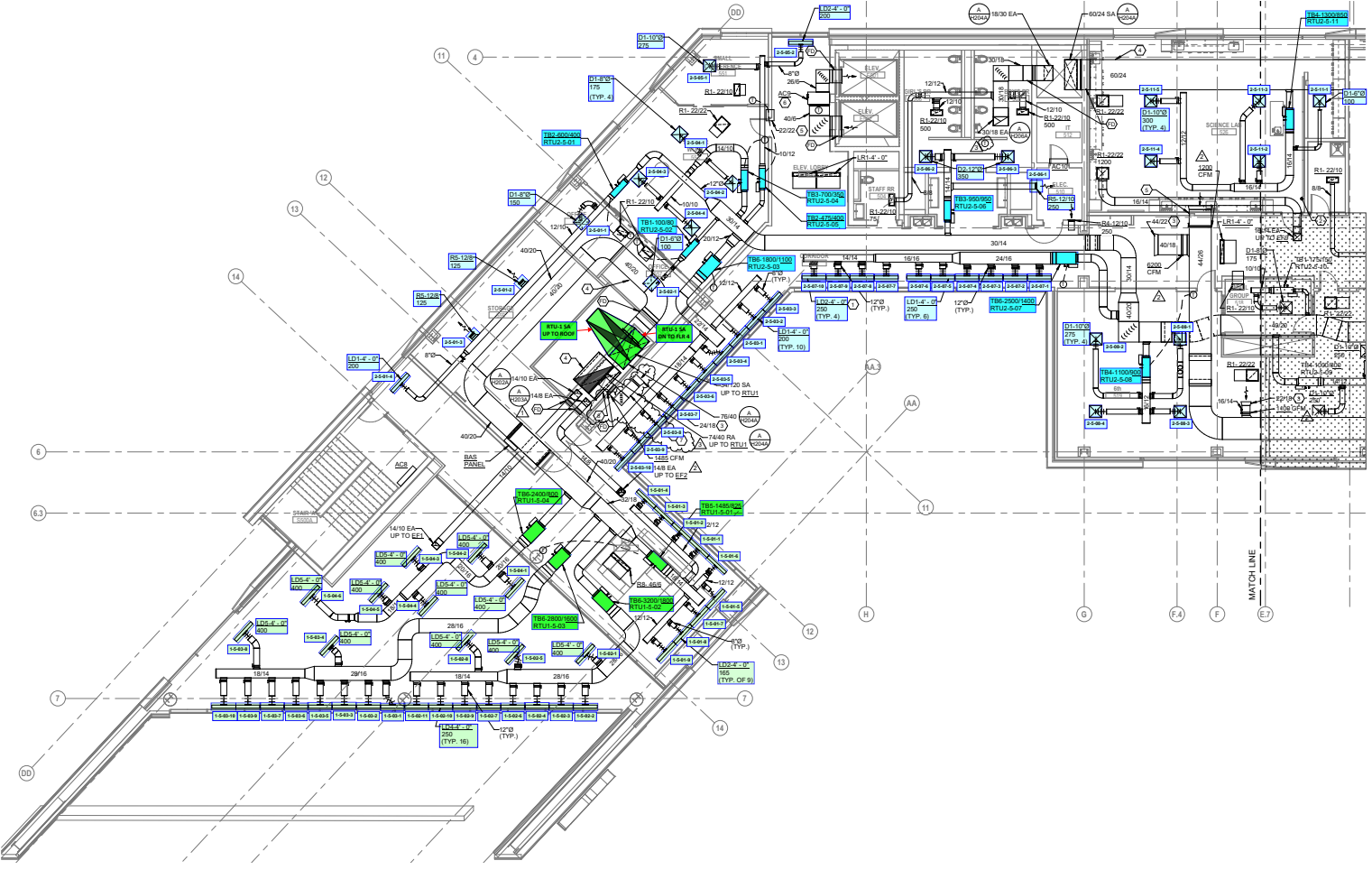


- CODED NOTES**
1. LOCATE TAP AND DAMPER AT UNDERSIDE OF DUCT.
  2. PROVIDE A 1-0 INACTIVE SECTION AND BLANK OFF.
  3. PROVIDE BORDERS AND ACCESSORIES REQUIRED FOR A CONTINUOUS, SEAMLESS LOOK THROUGH ACTIVE AND INACTIVE SECTIONS.
  4. PROVIDE A 1-0 INACTIVE SECTION AND BLANK OFF. COORDINATE ELEVATION OF AIR DEVICES WITH ARCHITECT TYPICAL.
  5. COORDINATE ELEVATION OF AIR DEVICES WITH ARCHITECT TYPICAL.
  6. BELLMOUTH OPENING FOR RETURN AIR PLENUM.
  7. PROVIDE DOUBLE-WALL ACOUSTICAL DUCT PER SPECIFICATIONS.
  8. RETURN AIR TERMINALS TO RELIEVE AIR TO PLENUM. DO NOT DISRUPT DUCT CONNECTION.

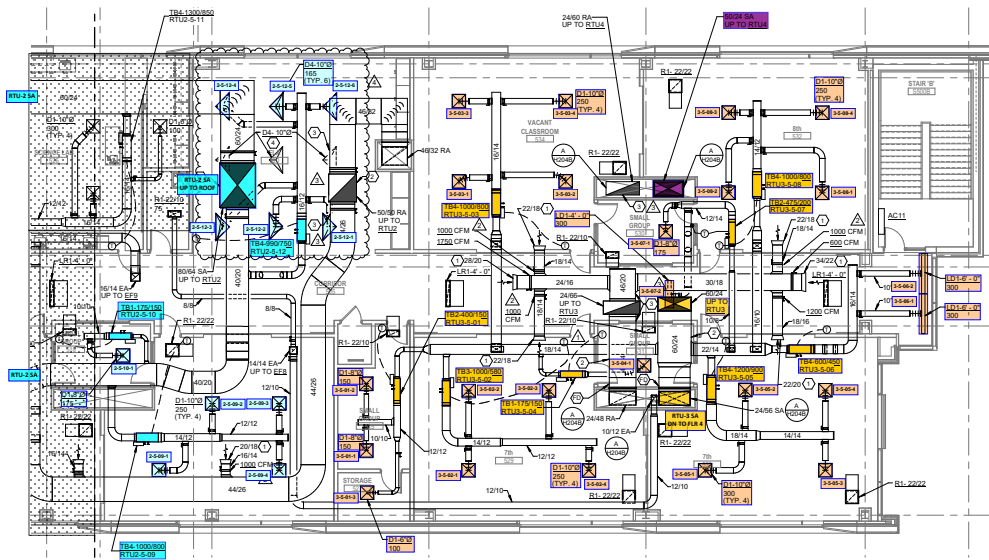


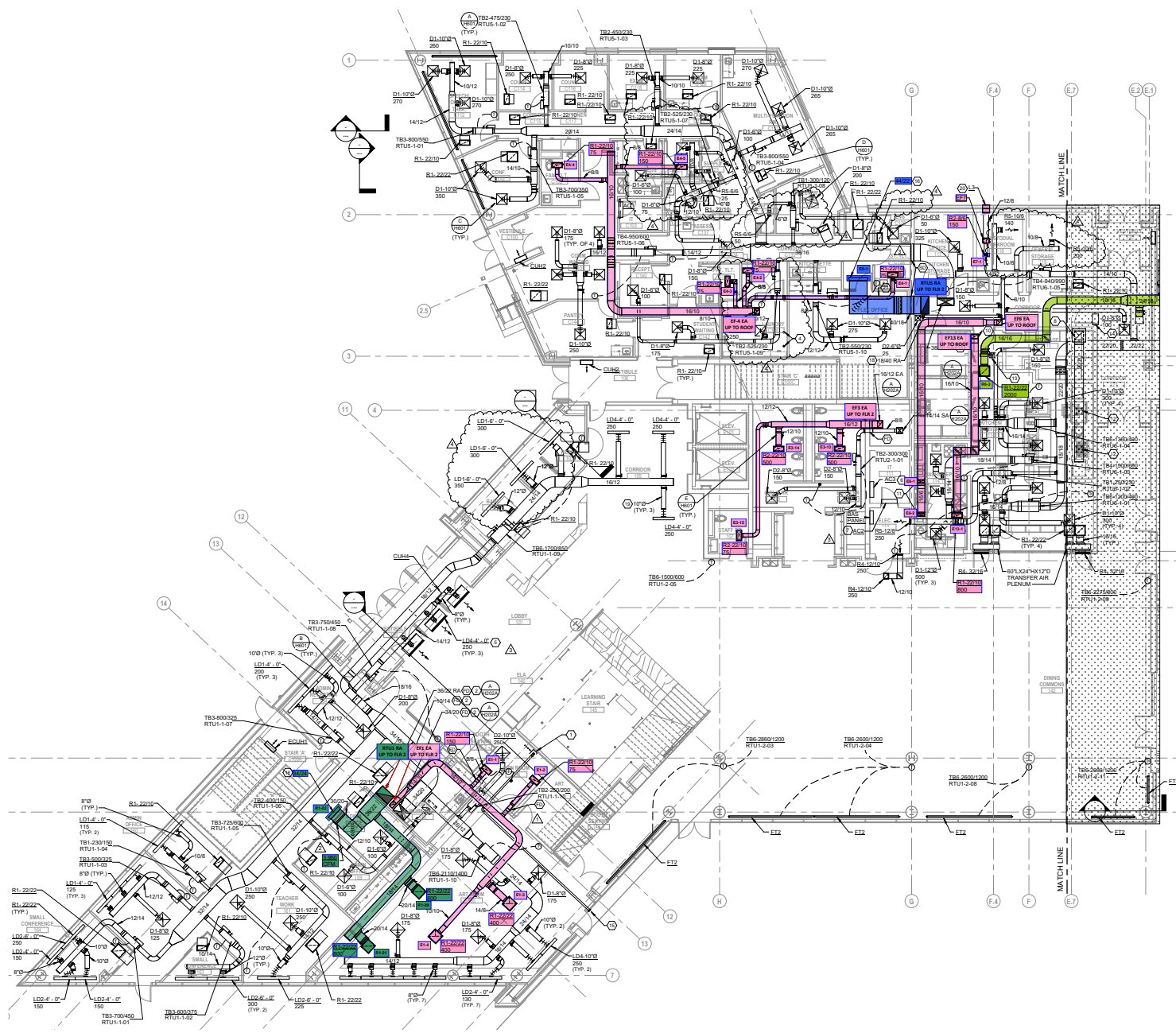


- CODED NOTES:**
1. PROVIDE CABLE OPERATED DAMPER FOR ACCESS.
  2. WALL SWITCH FOR MANUAL EXHAUST FAN CONTROL.
  3. BELLMOUTH OPENING FOR RETURN AIR FLENUM.
  4. PROVIDE DOUBLE WALL ACOUSTICAL DUCT PER SPECIFICATIONS.
  5. PROVIDE CLEARANCE FOR FULL OPENING OF TRANSFER DUCT.
  6. PROVIDE ACC TEMPERATURE SENSOR IN RETURN DUCT.
  7. SMOKE DETECTOR TO BE PROVIDED BY DIVISION 26.
  8. SMOKE DETECTOR TO BE PROVIDED BY DIVISION 26. LOCATE ABOVE LEVEL OF FLOOR PENETRATION.



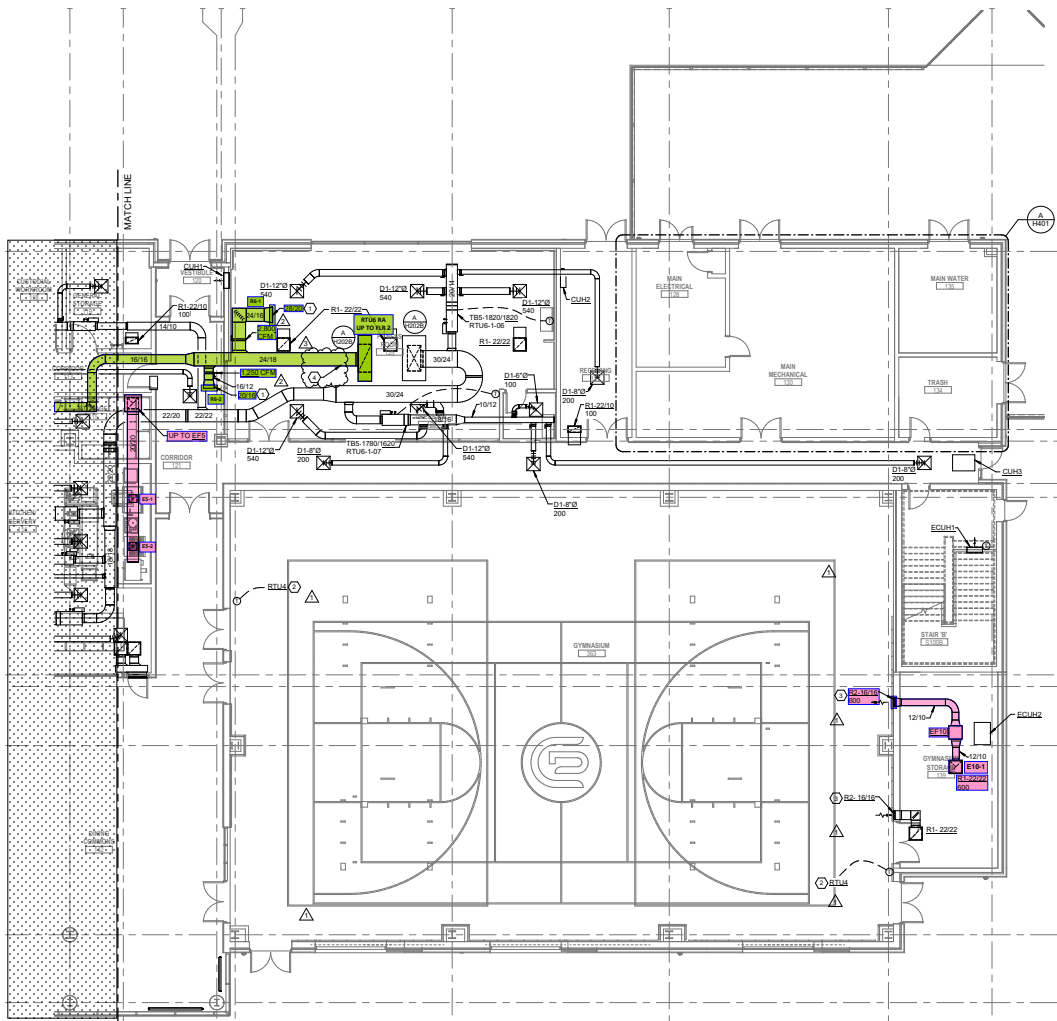
- ADDED NOTES**
- BELLMOUTH OPENING FOR RETURN AIR PLENUM
  - PROVIDE DOUBLE-WALL ACOUSTICAL DUCT PER SPECIFICATIONS
  - SMOKE DETECTOR TO BE PROVIDED BY DIVISION 26
  - RETURN AIR TERMINALS TO RELIEVE AIR TO PLENUM. DO NOT OBSTRUCT DUCT CONNECTION

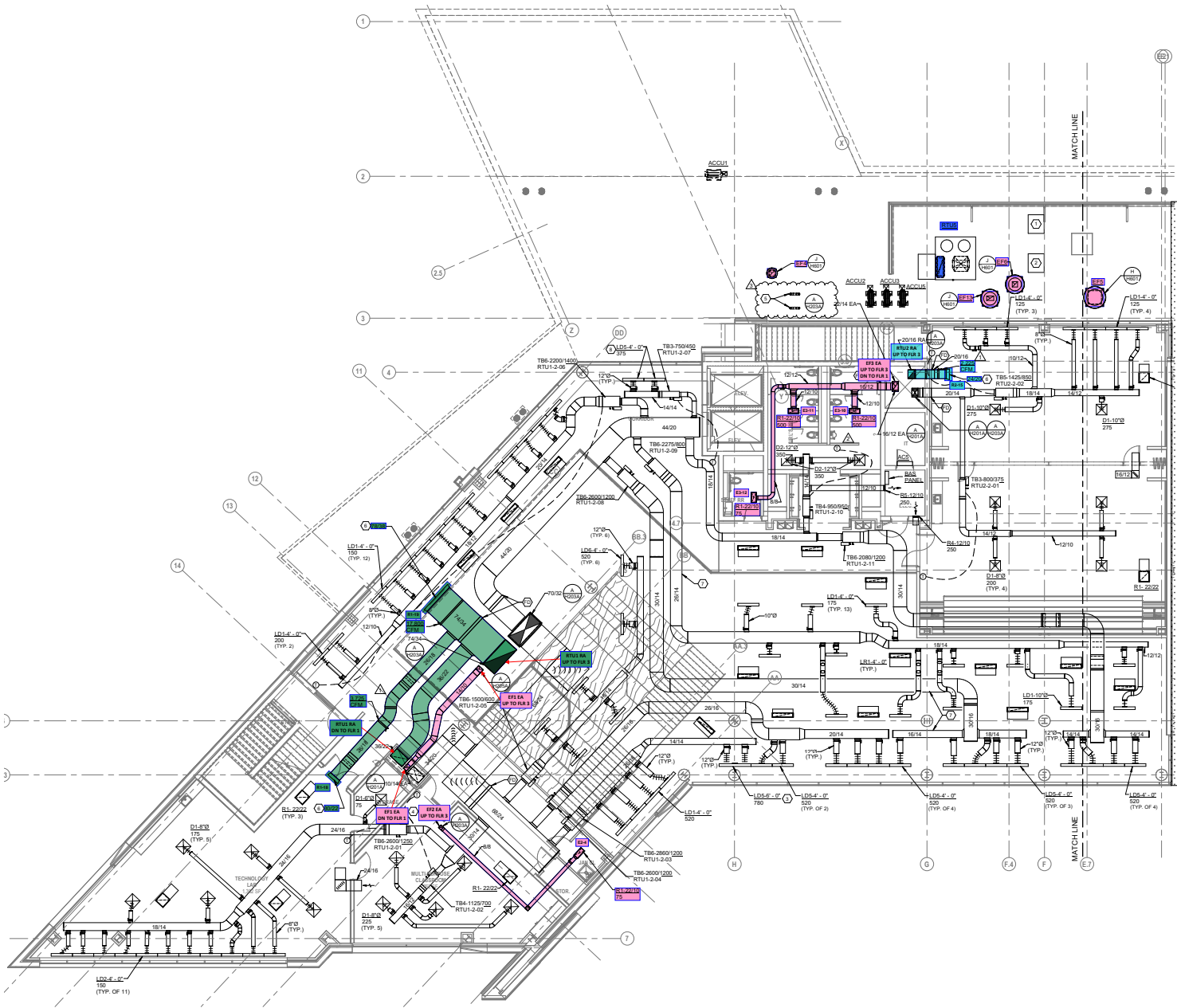




- CODED NOTES**
1. PROVIDE SHUTT ENVIRONMENT2 FAN CAPABLE OF EXHAUST 140 CFM THROUGH UP TO 80' OF 4" DUCT WITH THREE 90 DEGREE BENDS. MOUNT THE FAN TO THE WALL BEHIND THE KLN AND WITHIN 6" OF THE KLN. RUN 2" FLEXIBLE ALUMINUM DUCT BETWEEN THE KLN AND THE FAN. RUN 4" PVC FROM THE FAN TO THE EXTERIOR OF THE BUILDING. FAN PLUGS INTO WALL RECEPTABLE AND IS MANUALLY TURNED ON WITH INTEGRAL SWITCH. REFER TO KLN MANUFACTURER'S INSTALLATION INSTRUCTIONS.
  2. LOCATE FIRE DAMPER IN DUCT PENETRATION AT BOTTOM OF RATED SHAFT.
  3. NOT USED.
  4. 6" DIAMETER LAUNDRY VENT UP THROUGH ROOF. COORDINATE FINAL LOCATIONS WITH ARCHITECT.
  5. LINEAR AIR DEVICE IN SIDEWALL WITH PLENUM. TAP OFF MAIN WITH DAMPER AND CONNECT TO BOTTOM OF LINEAR AIR DEVICE PLENUM. COORDINATION EXACT LOCATION, ELEVATION AND FINISH COLOR OF AIR DEVICE WITH ARCHITECT.
  6. INSTALL WALL HUNG AC3 BELOW CABLE TRAY ON WEST WALL OF IT ROOM. TOP OF UNIT SHALL BE 6'-0" A.F.F.
  7. INSTALL WALL HUNG AC2 ABOVE DOOR ON SOUTH WALL OF IT ROOM.
  8. 2020 UP TO KITCHEN HOOD EXHAUST FAN E4E ON ROOF. PROVIDE GREASE DUCT CLEANOUT AT BOTTOM OF VERTICAL. PROVIDE GREASE TRAP.
  9. 1610 UP TO EXHAUST FAN E3E ON ROOF.
  10. 1212 UP TO EXHAUST FAN E2E ON ROOF.
  11. PROVIDE PANT LEG DUCT FITTING. LEGS SHALL BE 1616. MAKE CONNECTION TO D3 CONNECTIONS ON TOP OF DISHWASHER.
  12. PROVIDE TAPS OFF EXHAUST MAIN TO CONNECT TO D11514 CONNECTIONS ON GREASE HOOD. PROVIDE GREASE DUCT CLEANOUTS AT TAPS.
  13. PROVIDE MOTORIZED DAMPER AND BALANCE DAMPER. BALANCE TO 800 CFM. MOTORIZED DAMPER TO REMAIN CLOSED DURING KITCHEN HOOD OPERATION. OPEN WHEN HOOD IS NOT IN OPERATION.
  14. 2424 TRANSFER DUCT.
  15. TERMINATE KLN EXHAUST DUCT THROUGH EXTERIOR WALL. PROVIDE CORROSION RESISTANT ALUMINUM ROUND DUCT WALL CAP WITH INTEGRAL ALUMINUM MICROFILT DAMPER. FINISH WALL CAP TO MATCH ADJACENT EXTERIOR FINISH. COORDINATE EXACT LOCATION WITH ARCHITECT.
  16. BELLMOUTH OPENING FOR RETURN AIR PLENUM.
  17. 1610 UP TO EXHAUST FAN E4A ON ROOF.
  18. UP TO RTUS.
  19. PROVIDE CABLE OPERATED DAMPER FOR ACCESS.
  20. PROVIDE SHEETMETAL PLENUM BEHIND LOUVER.
  21. SMOKE DETECTOR TO BE PROVIDED BY DIVISION 26.

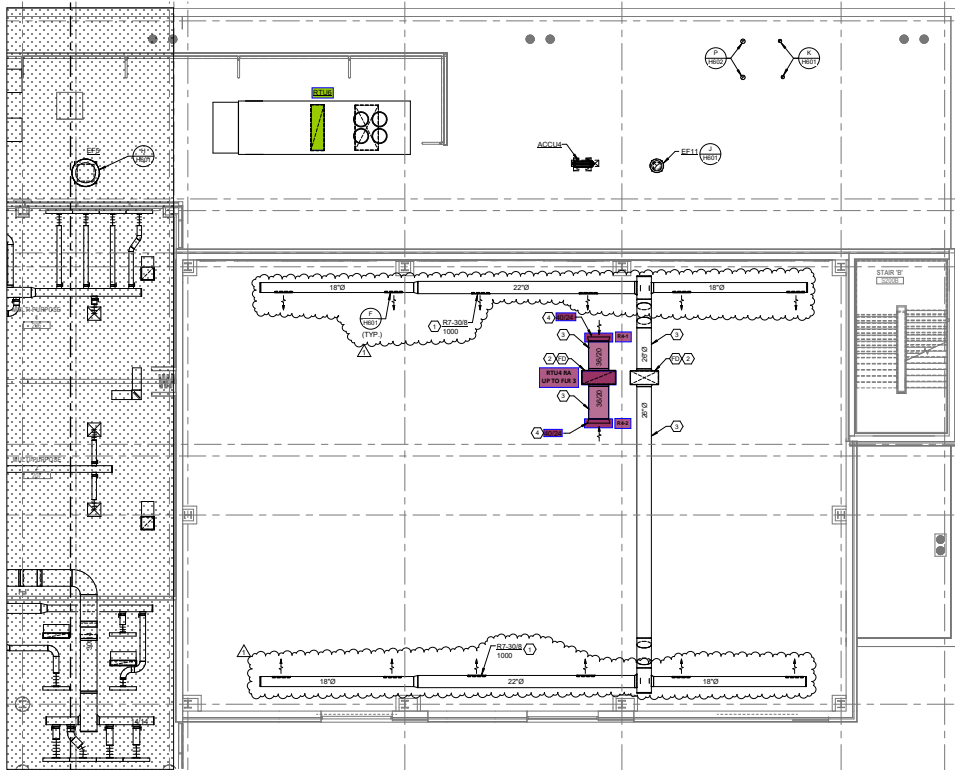
- CODED NOTES:**
1. BELLMOUTH OPENING FOR RETURN AIR FLENDAL
  2. INSTALL TEMPERATURE SENSOR BOTTOM OF DEVICE BY A.F.F. COORDINATE LOCATION OF SENSOR WITH ARCHITECTURAL ELEVATIONS. INSTALL CONDUIT IN WALL. EXPOSED CONDUIT IS NOT ACCEPTABLE.
  3. COORDINATE LOCATION OF SIDEWALL GRILLE WITH ARCHITECTURAL ELEVATIONS
  4. SMOKE DETECTOR TO BE PROVIDED BY DIVISION 5.





8. COORD. NOTES:
1. WALK IN FREEZER CONDENSING UNIT BY KITCHEN EQUIPMENT CONTRACTOR. LOCATION SHOWN FOR COORDINATION WITH MECHANICAL EQUIPMENT.
  2. WALK IN COOLER CONDENSING UNIT BY KITCHEN EQUIPMENT CONTRACTOR. LOCATION SHOWN FOR COORDINATION WITH MECHANICAL EQUIPMENT.
  3. SINGLE LINEAR DEVICE WITH TWO 1/2" TAPS INTO PLENUM.
  4. LOCATE FIRE DAMPER IN DUCT AT BOTTOM OF SHAFT.
  5. TERMINATE LAUNDRY VENT WITH GOOSENECK AND BIRDSCREEN. MINIMUM 1' ABOVE FINISHED FLOOR.
  6. BELLMOUTH OPENING FOR RETURN AIR PLENUM.
  7. ALL EXPOSED DUCTWORK ABOVE Baffle AND CLOUD CEILING TO BE PAINTED. FINISH COLOR TO BE COORDINATED WITH ARCHITECT.
  8. PROVIDE CABLE OPERATED DAMPER FOR ACCESS.

- SCOPED NOTES**
1. ANGLE AIR FLOW 45 DEGREES DOWNWARD TOWARD CENTER OF GYMNASIUM. COORDINATE AIR DEVICES WITH SUSPENDED LIGHTING DEVICES ARE TO BE LOCATED SUCH THAT AIR IS NOT DIRECTLY ON USG/CEILING.
  2. LOCATE FIRE DAMPER IN VERTICAL DUCT AT SHAFT PENETRATION.
  3. ROUTE DUCTWORK TIGHT TO UNDERSIDE OF DECK AND BETWEEN BEAMS.
  4. BELLMOUTH OPENING FOR RETURN AIR PLENUM.



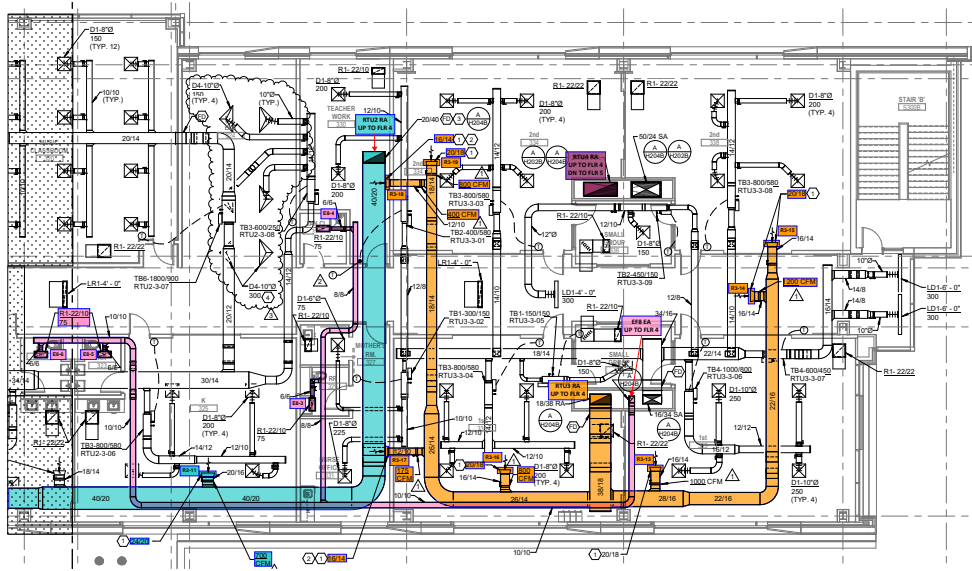
**A FLOOR PLAN**  
SECOND FLOOR - AREA B

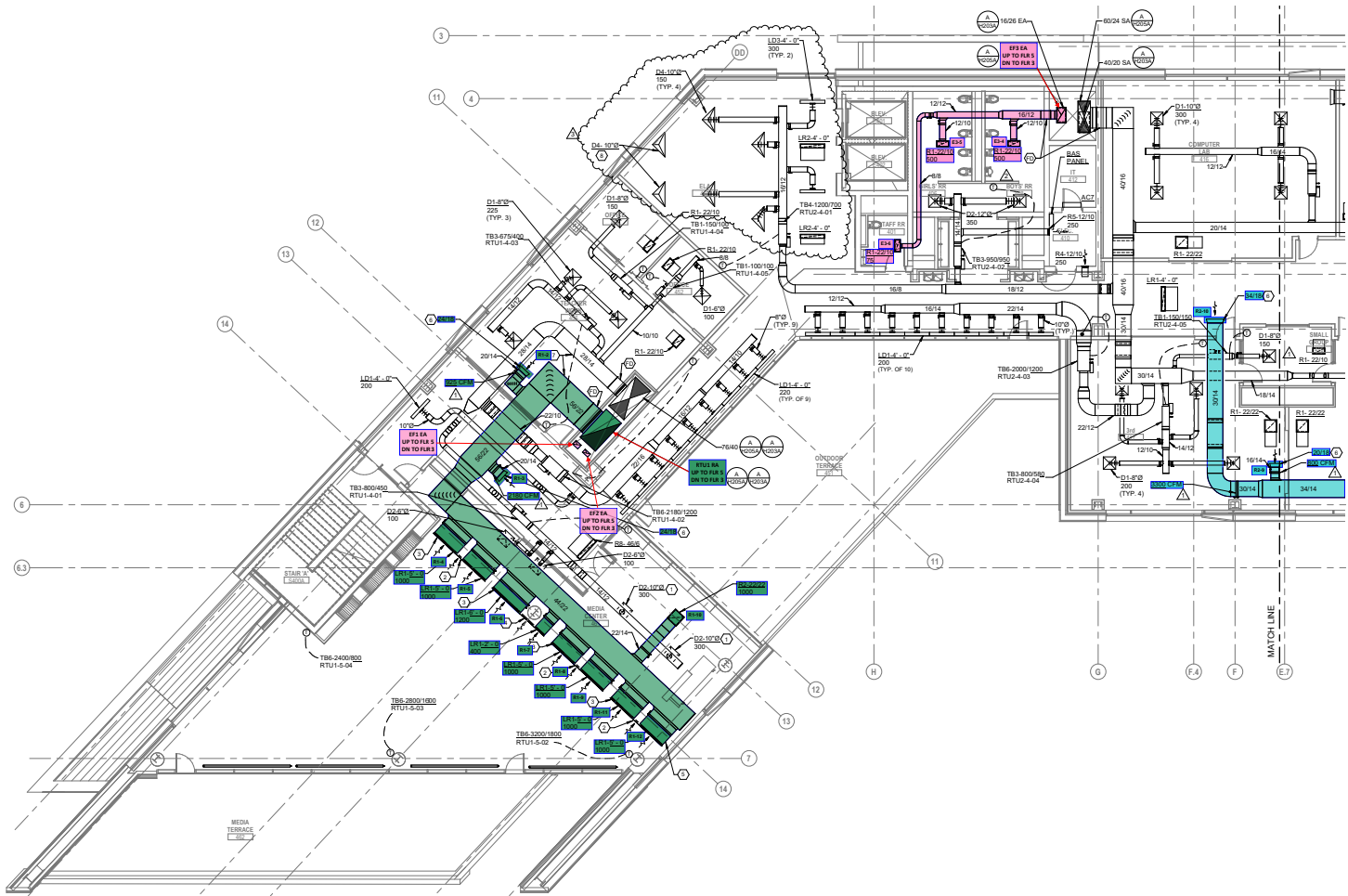


**Greater Dayton School BP2 (Dayton, OH)**



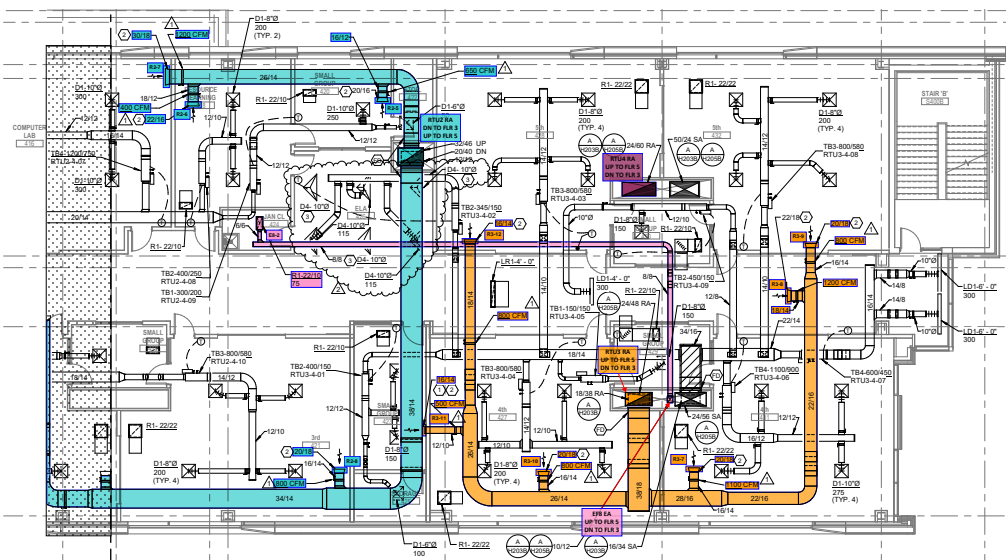
- CODED NOTES
- BELLMOUTH OPENING FOR RETURN AIR PLENUM.
  - PROVIDE CLEARANCE FOR FULL OPENING OF TRANSFER DUCT.
  - LOCATE FIRE DAMPER IN DUCT PENETRATION AT BOTTOM OF RATED SHaft.
  - RETURN AIR TERMINALS TO RELIEVE AIR TO PLENUM. DO NOT DESTRUCT DUCT CONNECTION.





- CODED NOTES**
1. LOCATE TAP AND DAMPER AT UNDERSIDE OF DUCT.
  2. PROVIDE A 1-0 INACTIVE SECTION AND BLANK OFF.
  3. PROVIDE BORDERS AND ACCESSORIES REQUIRED FOR A CONTINUOUS, SEAMLESS LOOK THROUGH ACTIVE AND INACTIVE SECTIONS.
  4. PROVIDE A 1-0 INACTIVE SECTION AND BLANK OFF. COORDINATE ELEVATION WITH STRUCTURAL COLUMN.
  5. COORDINATE ELEVATION OF AIR DEVICES WITH ARCHITECT. TYPICAL.
  6. BELLMOUTH OPENING FOR RETURN AIR PLENUM.
  7. PROVIDE DOUBLE-WALL ACOUSTICAL DUCT PER SPECIFICATIONS.
  8. RETURN AIR TERMINALS TO RELIEVE AIR TO PLENUM. DO NOT DISRUPT DUCT CONNECTION.

- CODED NOTES
1. PROVIDE CLEARANCE FOR FULL OPENING OF TRANSFER DUCT.
  2. BELLMOUTH OPENING FOR RETURN AIR PLENUM.
  3. RETURN AIR TERMINALS TO RELIEVE AIR TO PLENUM. DO NOT RESTRICT DUCT CONNECTION.

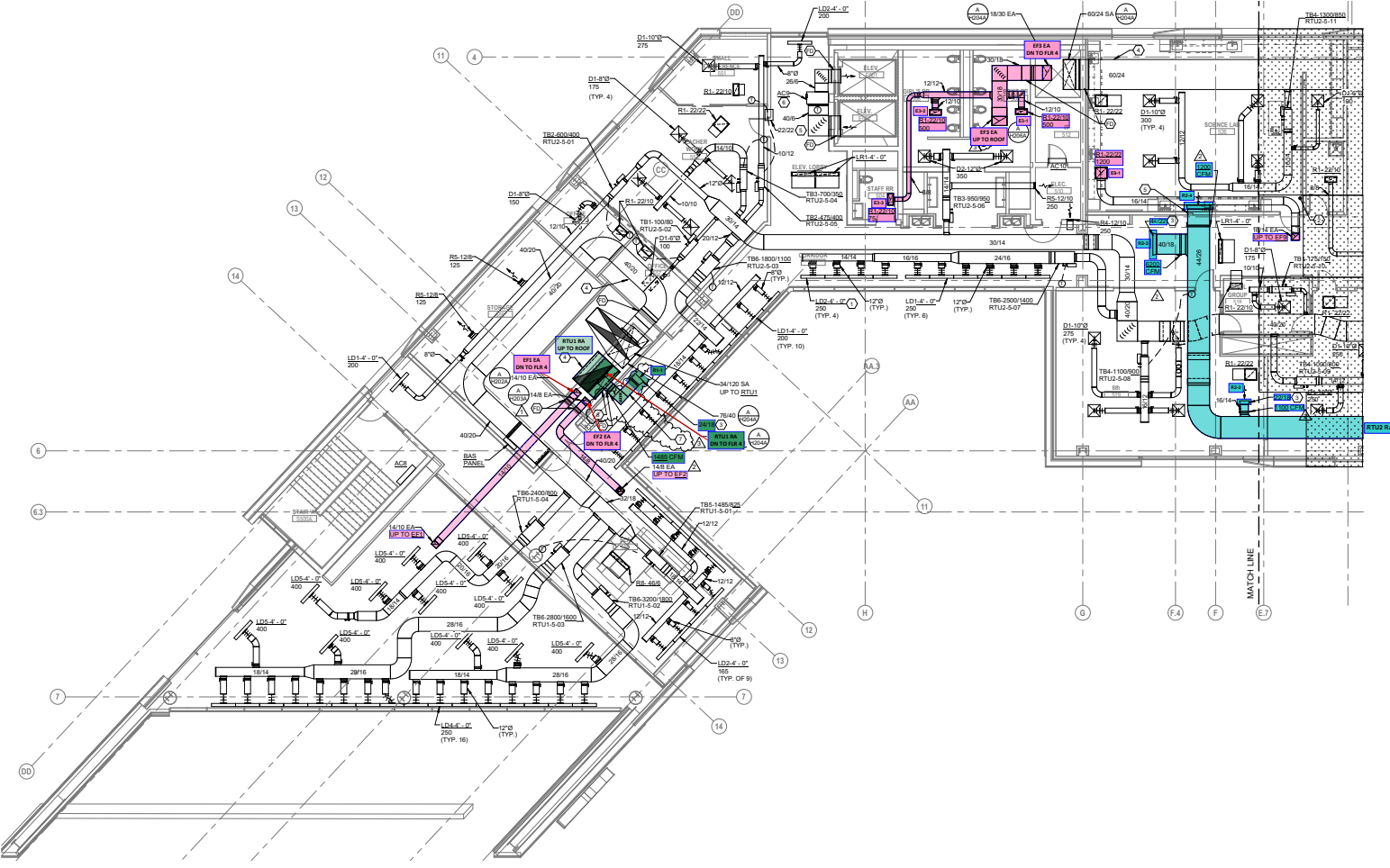


A FLOOR PLAN  
FOURTH FLOOR - AREA B

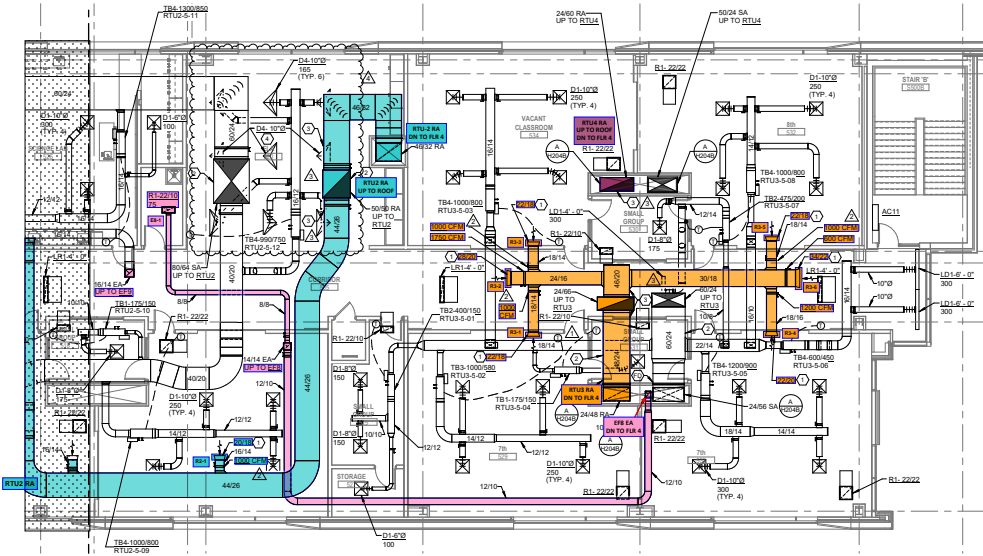


Greater Dayton School BP2 (Dayton, OH)

- CODED NOTES:**
1. PROVIDE CABLE OPERATED DAMPER FOR ACCESS.
  2. WALL SWITCH FOR MANUAL EXHAUST FAN CONTROL.
  3. BELLMOUTH OPENING FOR RETURN AIR FLENUM.
  4. PROVIDE DOUBLE WALL ACUSTICAL DUCT PER SPECIFICATIONS.
  5. PROVIDE CLEARANCE FOR FULL OPENING OF TRANSFER DUC.
  6. PROVIDE ADD TEMPERATURE SENSOR IN RETURN DUCT.
  7. SMOKE DETECTOR TO BE PROVIDED BY DIVISION 26
  8. SMOKE DETECTOR TO BE PROVIDED BY DIVISION 26  
LOCATE ABOVE LEVEL OF FLOOR PENETRATION



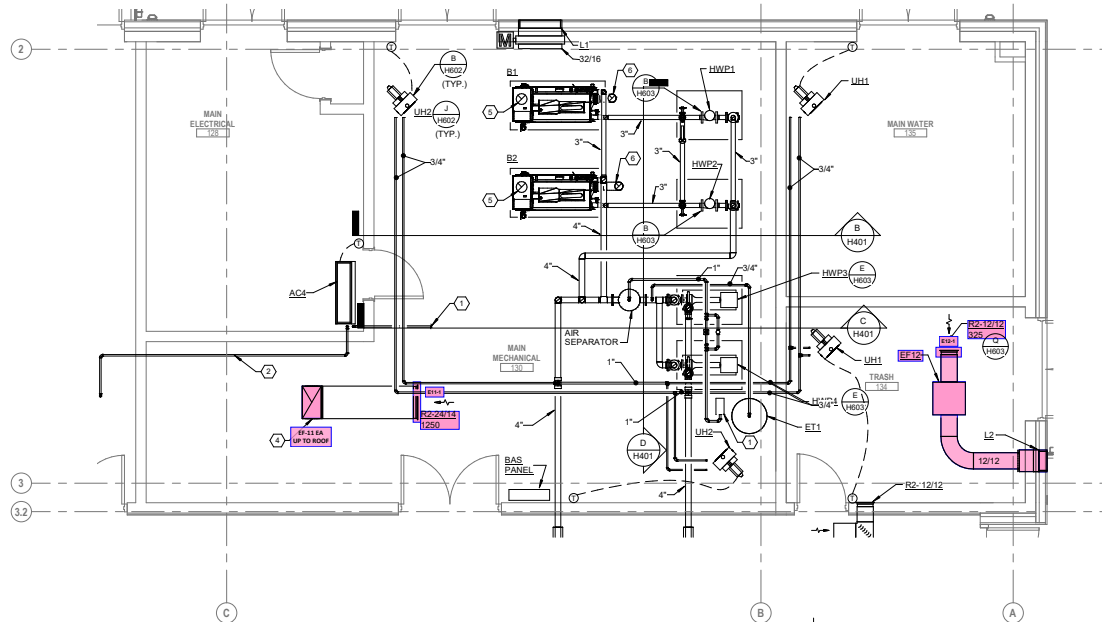
- ADDED NOTES**
1. BELLMOUTH OPENING FOR RETURN AIR PLENUM
  2. PROVIDE DOUBLE-WALL ACOUSTICAL DUCT PER SPECIFICATIONS
  3. SMOKE DETECTOR TO BE PROVIDED BY DIVISION 26
  4. RETURN AIR TERMINALS TO RELIEVE AIR TO PLENUM. DO NOT OBSTRUCT DUCT CONNECTION



**A FLOOR PLAN**  
FIFTH FLOOR - AREA B

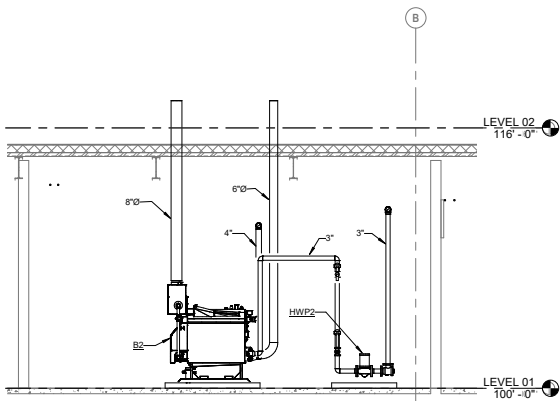


**Greater Dayton School BP2 (Dayton, OH)**

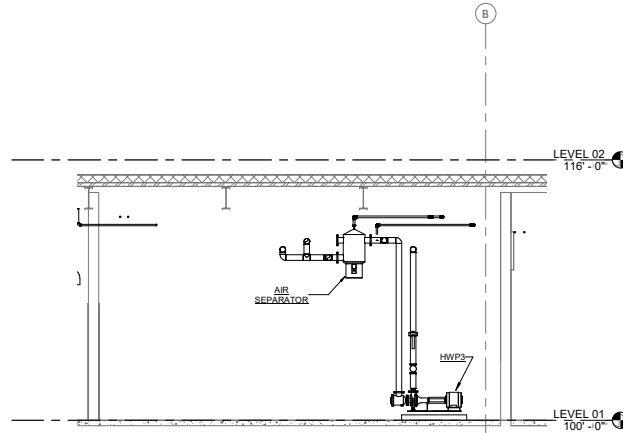


- CODED NOTES:**
- APPROXIMATE LOCATION OF BACKFLOW PREVENTER BY PLUMBING CONTRACTOR. COORDINATE FINAL LOCATION IN FIELD. ALL PIPING DOWNSTREAM OF BACKFLOW PREVENTER SHALL BE BY THE HVAC CONTRACTOR.
  - PROVIDE REFRIGERANT LINESET FROM INDOOR UNIT TO OUTDOOR CONDENSER UNIT ON ROOF. SIZE PER MANUFACTURER'S INSTRUCTIONS. SINGLE LINE REPRESENTS BOTH PIPES IN LINESET.
  - ROUTE 3/4" CONDENSATE DRAIN TO NEAREST FLOOR DRAIN. TERMINATE WITH 2" AIR GAP.
  - UP TO EH11 ON ROOF.**
  - 8 INCH COMBUSTION AIR UP THROUGH ROOF TO ITAKE GOOSENECK.
  - 6 INCH BOILER FLUE UP THROUGH ROOF.

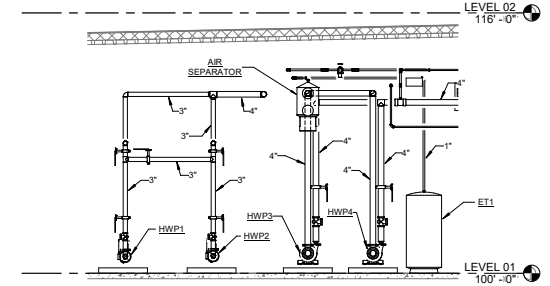
**A ENLARGED PLAN**  
FIRST FLOOR MECHANICAL ROOM  
SCALE: 1/4" = 1'-0"  
0 1' 2' 4'



**B SECTION**  
B/H401  
SCALE: 1/4" = 1'-0"  
0 1' 2' 4'



**C SECTION**  
C/H401  
SCALE: 1/4" = 1'-0"  
0 1' 2' 4'



**D D/H401**  
SCALE: 1/4" = 1'-0"  
0 1' 2' 4'