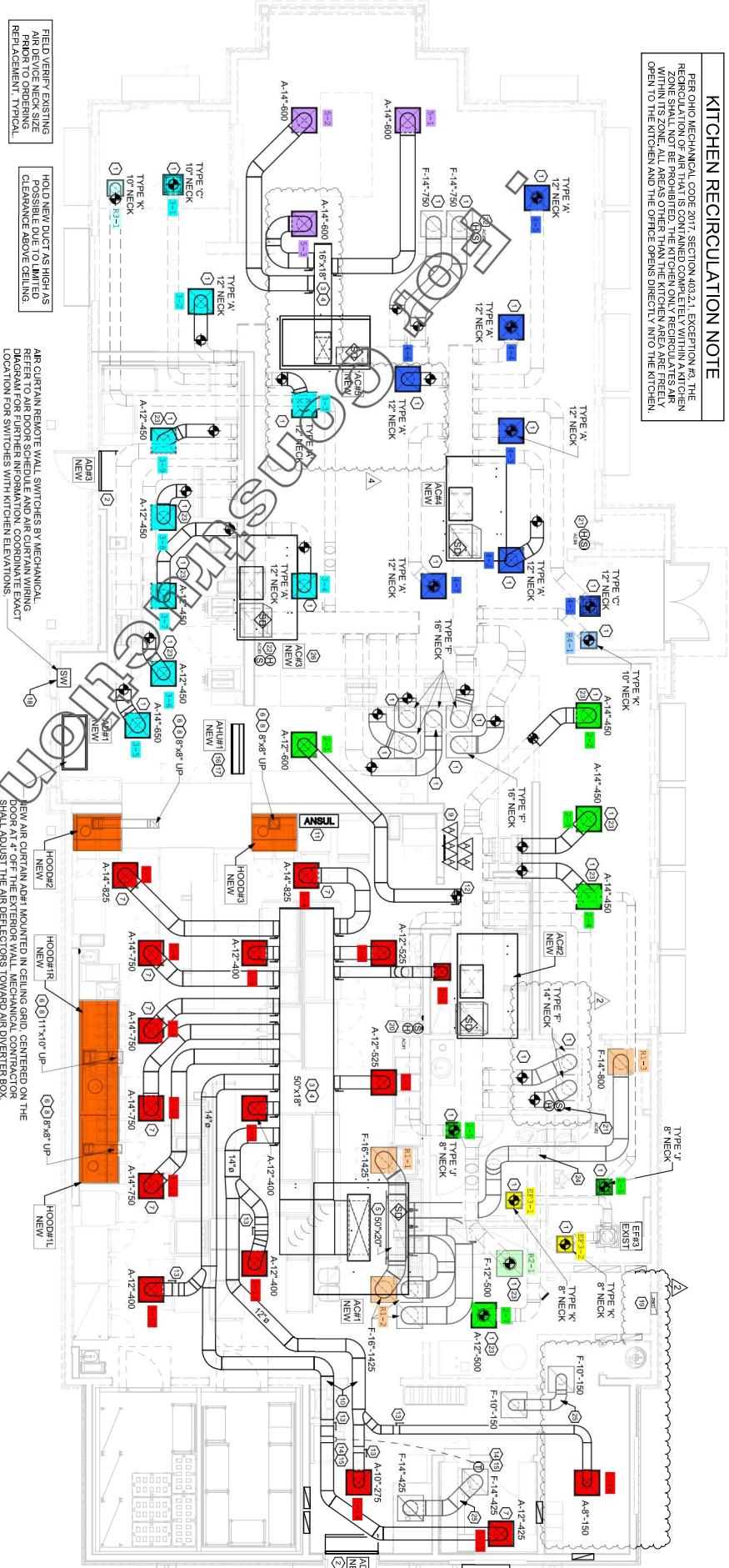


**KITCHEN RECIRCULATION NOTE**

PER OHIO MECHANICAL CODE 2017, SECTION 403.2.1, EXCEPTION #3, THE RECIRCULATION OF AIR THAT IS CONTAINED COMPLETELY WITHIN A KITCHEN ZONE SHALL NOT BE PROHIBITED. THE KITCHEN ONLY RECIRCULATES AIR WITHIN THE KITCHEN ZONE. THE RECIRCULATION OF AIR SHALL NOT BE OPEN TO THE KITCHEN AND THE OFFICE OPENS DIRECTLY INTO THE KITCHEN.



**1 MECHANICAL FLOOR PLAN**  
1/8" = 1'-0"