

DEMOLITION NOTES

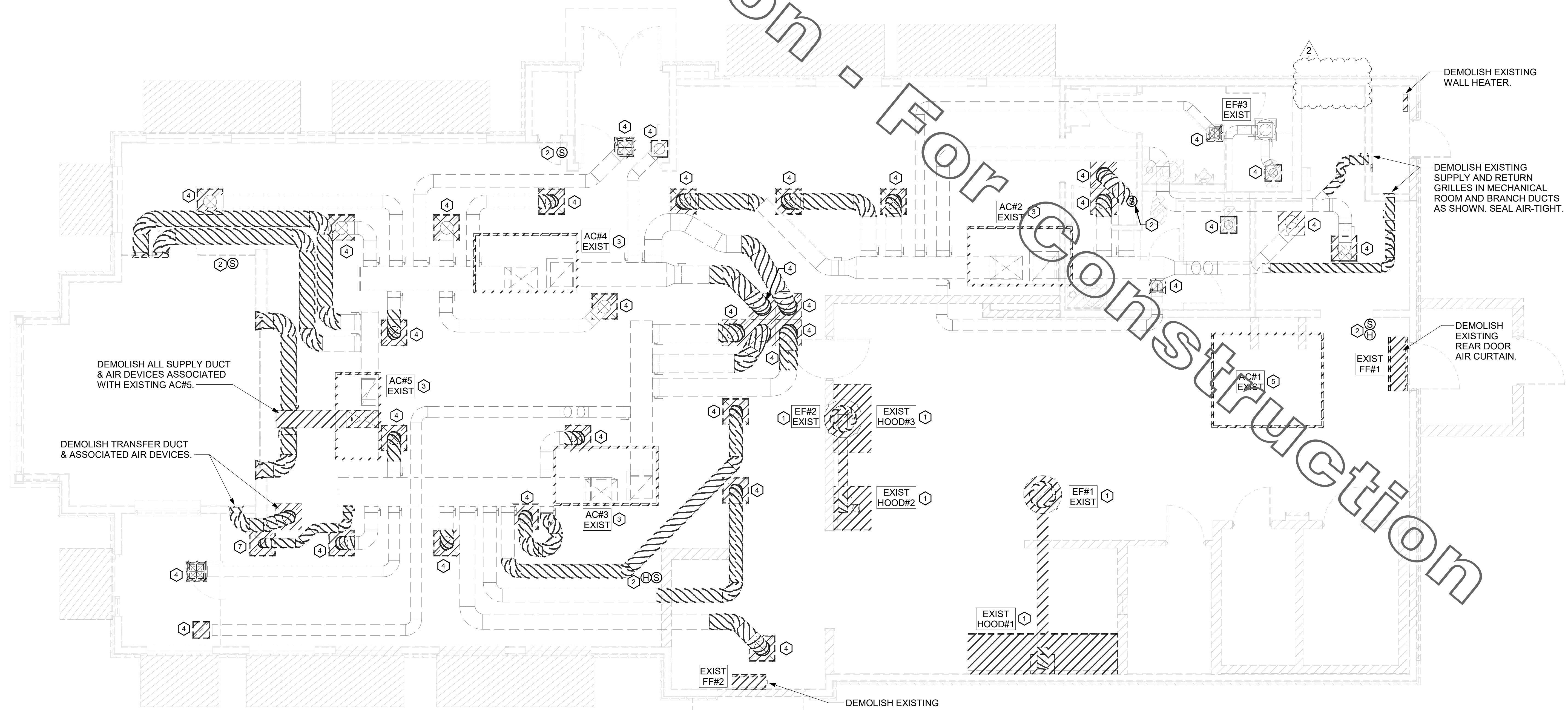
1. CONTRACTOR IS RESPONSIBLE FOR OBTAINING ALL NECESSARY PERMITS AND PAYING ALL APPLICABLE FEES.
2. DISPOSAL OF EQUIPMENT AND MATERIALS REQUIRED TO BE REMOVED SHALL BE THE RESPONSIBILITY OF THE CONTRACTOR PERFORMING THE WORK.
3. DE-ENERGIZE ALL ELECTRICAL CIRCUITS RELATED TO EQUIPMENT THAT WILL BE MOVED OR REMOVED PRIOR TO STARTING WORK. DE-ENERGIZED CIRCUITS SHALL BE PROTECTED WITH LOCKING DEVICES USING APPROPRIATE WARNING LABELS.
4. MECHANICAL CONTRACTOR SHALL BE RESPONSIBLE FOR PATCHING ROOF AFTER REMOVAL OF EXISTING MECHANICAL EQUIPMENT. SEE ARCHITECTURAL DRAWINGS FOR ROOF PATCHING REQUIREMENTS.
5. EXCEPT WHERE NOTED, EXISTING REMOTE TEMPERATURE AND/OR HUMIDITY SENSORS TO REMAIN. IF DURING RENOVATION PURPOSES CONTROLS SHALL BE TAKEN DOWN. MECHANICAL CONTRACTOR SHALL BE RESPONSIBLE FOR REINSTALLING AND TO PROVIDE ANY ADDITIONAL WIRING NEEDED. VERIFY EXISTING UNIT CONTROLS ARE IN GOOD WORKING ORDER. IF NOT, CONTACT CHICK-FIL-A CONSTRUCTION MANAGER.
6. MECHANICAL CONTRACTOR SHALL REPLACE FILTERS FOR ALL RTUS AT END OF PROJECT AND PRIOR TO REOPENING. MC TO PROVIDE PROPOSAL TO FACILITIES MANAGER, CONSTRUCTION MANAGER, AND OPERATOR TO CORRECT EXISTING RTU PUNCH ITEMS IDENTIFIED BY HALTON.
7. CONTRACTOR SHALL INDICATE SALVAGE VALUE IN BID FOR ROOFTOP UNITS BEING REPLACED.

DEMOLITION LEGEND	
	EXISTING EQUIPMENT, DUCT, AIR DEVICE, ETC. TO REMAIN INTACT
	EXISTING EQUIPMENT, DUCT, AIR DEVICE, ETC. TO BE DEMOLISHED

EXISTING CONDITIONS SHOWN ARE FROM PREVIOUS DRAWINGS. MECHANICAL CONTRACTOR SHALL FIELD VERIFY EXACT LOCATIONS OF ALL DUCT AND DIFFUSERS. IF MAJOR DIFFERENCES OCCUR IN FIELD, CONTACT CHICK-FIL-A CONSTRUCTION MANAGER.

KEY NOTES

1. DEMOLISH EXISTING HOOD, ALL ASSOCIATED GREASE DUCT, CAPTURE JET FAN AND DIFFUSER (IF EXISTING), EXHAUST FAN, AND ITS ASSOCIATED ROOF CURB. PATCH AND REPAIR ROOF TO MATCH SURROUNDING CONSTRUCTION.
2. EXISTING REMOTE TEMPERATURE AND/OR REMOTE HUMIDITY SENSORS TO BE REPLACED WITH NEW. DEMOLISH ASSOCIATED CONTROL WIRING. SEE SHEET M-201 FOR FURTHER INFORMATION.
3. EXISTING AC UNIT TO BE REPLACED WITH NEW AS SCHEDULED ON SHEET M-401. UNLESS NOTED OTHERWISE, DEMOLISH ALL EXISTING UNIT CONTROLS (REMOTE TEMP SENSOR, REMOTE HUMIDITY SENSOR, T'STAT, REMOTE SMOKE DETECTOR TEST/RESET STATION, ETC.). EXISTING ROOF CURB AND SUPPLY/RETURN DUCT TO REMAIN. COVER CURB WEATHER-TIGHT FOR RE-USE. GC BID ALTERNATE: MATERIALS AND LABOR TO BE BILLED UNDER SEPARATE CONTRACT AND COORDINATED VIA WORK ORDER WITH FEQ SPECIALIST.
4. DETACH AND DEMOLISH EXISTING AIR DEVICE. SECURE DUCT ABOVE CEILING GRID FOR RE-CONNECTION. SEE SHEET M-201 FOR NEW CONNECTION.
5. DEMOLISH EXISTING KITCHEN AC UNIT, UNIT CONTROLS (REMOTE TEMP SENSOR, REMOTE HUMIDITY SENSOR, T'STAT, REMOTE SMOKE DETECTOR TEST/RESET STATION, ETC.), SUPPLY/RETURN AIR DROPS, AND ALL ASSOCIATED SUPPLY/RETURN DUCT AND AIR DEVICES. COVER EXISTING ROOF CURB WEATHER-TIGHT FOR RE-USE.
7. DEMOLISH EXISTING AIR DEVICE AND ASSOCIATED BRANCH DUCT BACK TO PLENUM. SEAL PLENUM AIR-TIGHT.

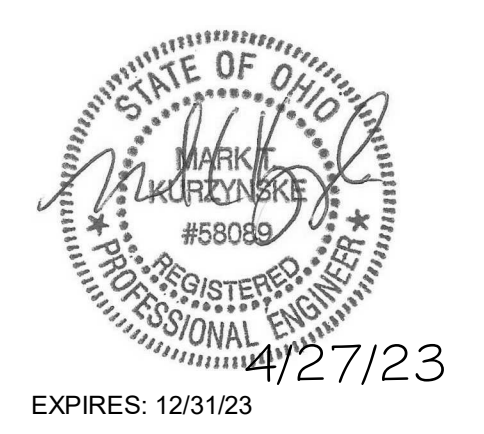


1 MECHANICAL DEMO PLAN
1/4" = 1'-0"



Chick-fil-A
5200 Buffington Road
Atlanta, Georgia
30349-2998

Kurzynske & Associates
2705 Lebanon Pike - Suite One
Nashville, Tennessee 37214
Telephone: (615) 255-5203



CHICK-FIL-A
EASTGATE FSU
874 EASTGATE NORTH DR
CINCINNATI, OH 45245

FSR#01956
BUILDING TYPE / SIZE: S06C-R
RELEASE: v2.20.08

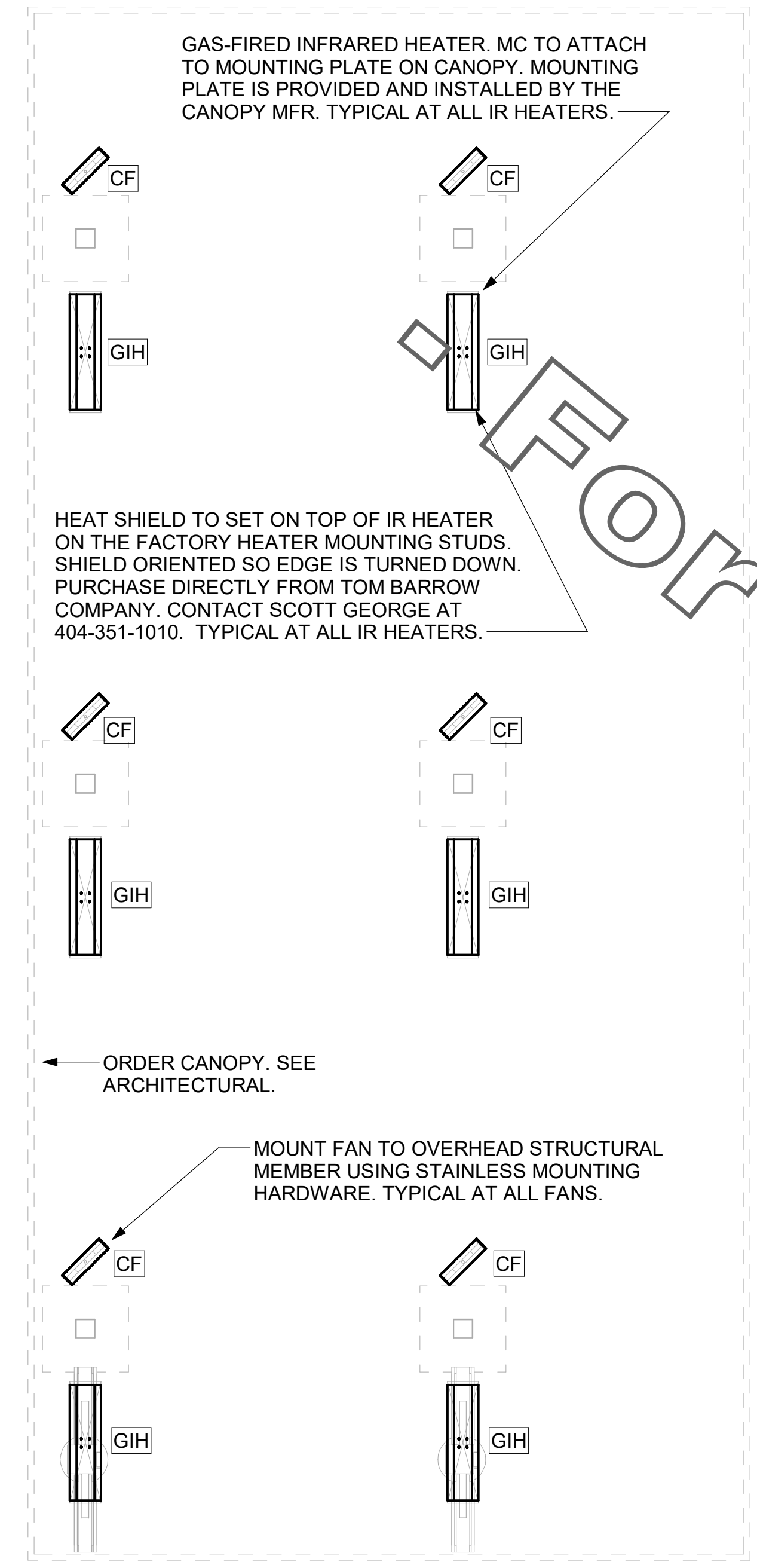
REVISION SCHEDULE		
NO.	DATE	DESCRIPTION
2	03/08/2023	CITY COMMENTS

CONSULTANT PROJECT # 22124.CD.R
PRINTED ISSUE FOR CONSTRUCTION
DATE 09/08/2022
DRAWN BY DSF

Information contained on this drawing and in all digital files produced for above named project may not be reproduced in any manner without express written or verbal consent from authorized project representatives.

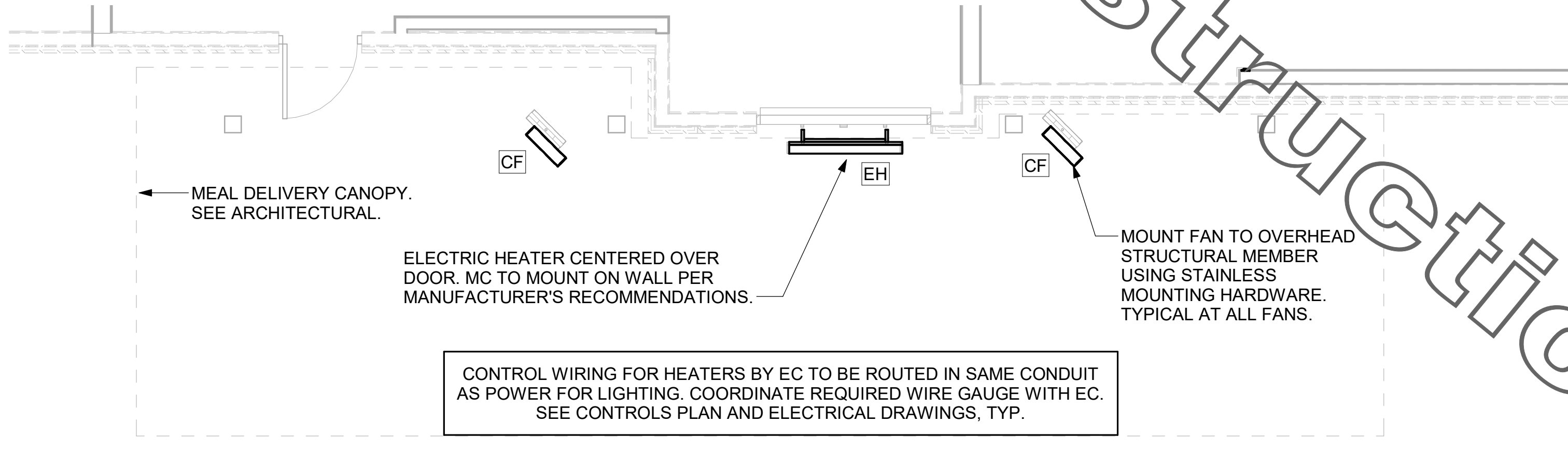
SHEET MECHANICAL DEMO PLAN
SHEET NUMBER
M-200

ISSUE FOR CONSTRUCTION



CONTROL WIRING FOR HEATERS BY EC TO BE ROUTED IN SAME CONDUIT AS POWER FOR LIGHTING. COORDINATE REQUIRED WIRE GAUGE WITH EC. SEE CONTROLS PLAN AND ELECTRICAL DRAWINGS, TYP.

1 MECHANICAL PLAN - ORDER CANOPY
1/4" = 1'-0"



2 MECHANICAL PLAN - MEAL DELIVERY CANOPY
1/4" = 1'-0"

LEGEND			
CF	CIRCULATING FAN	GIH	GAS INFRARED HEATER (TYP.)
EC	ELECTRICAL CONTRACTOR	MC	MECHANICAL CONTRACTOR

CANOPY GENERAL NOTES

- COORDINATE NEW WORK WITH EXISTING CONDUIT, STRUCTURE, AND PIPING. FIELD VERIFY EXISTING CONDITIONS PRIOR TO START OF WORK.
- ACTUAL NUMBER OF GAS INFRARED HEATERS WILL BE DETERMINED BY SITE-SPECIFIC CANOPY LAYOUT AND EQUIPMENT LOCATIONS, AS INDICATED ON ARCHITECTURAL PLANS.
- CONTROL WIRING FOR HEATERS BY EC. COORDINATE REQUIRED WIRE GAUGE WITH EC. SEE CONTROLS PLAN AND ELECTRICAL DRAWINGS, TYP.

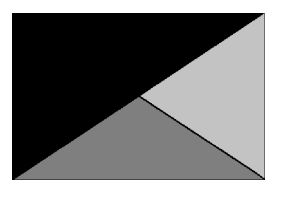
GAS FIRED INFRARED HEATER SCHEDULE							
MARK	INPUT (MBH)	FRAME LENGTH	FRAME WIDTH	FRAME DEPTH	MOUNTING TYPE	MODEL	MANUFACTURER
GIH	50.0	48-1/4"	13"	10"	Bracket	2352-NG	Schwank
REMARKS	<ol style="list-style-type: none"> STEEL BURNER WITH CERAMIC BURNER TILES. STAINLESS STEEL LENS WITH BLACK EMISSIVE COATING. PROVIDE ENGRAVED PLASTIC LABEL AT EACH UNIT WITH UNIT DESIGNATION IN 1" HIGH WHITE LETTERS ON A BLACK BACKGROUND. MOUNT TO CANOPY DECK, FACING FORWARD, 12" LATERALLY FROM THE LONG SIDE OF THE HEATER. MOUNTING BRACKET PROVIDED AND INSTALLED BY CANOPY MFR. PROVIDE HEAT SHIELD ABOVE EACH HEATER AT THE BOTTOM OF THE BRACKET. 						

ELECTRIC INFRARED HEATER SCHEDULE							
MARK	INPUT (KW)	FRAME LENGTH	FRAME WIDTH	FRAME DEPTH	MOUNTING TYPE	MODEL	MANUFACTURER
EH	6.0	56"	8.5"	3.5"	BRACKET	BH0420035	BROMIC
REMARKS	<ol style="list-style-type: none"> PROVIDE WITH BLACK HIGH TEMPERATURE COATING. PROVIDE ENGRAVED PLASTIC LABEL AT EACH UNIT WITH UNIT DESIGNATION IN 1" HIGH WHITE LETTERS ON A BLACK BACKGROUND. PROVIDE WITH MOUNTING BRACKETS PER MANUFACTURER'S RECOMMENDATIONS. 						

CIRCULATING FAN SCHEDULE						
MARK	CFM	RPM	HP	MODEL	MANUFACTURER	
CF	5750	1,625	1/8	UI18TE-HD	TPI	
REMARKS	<ol style="list-style-type: none"> ALUMINUM PADDLE WITH STEEL HUB/SPIDER PROPELLER. 360 DEG. ROTATING HEAD HORIZONTALLY AND VERTICALLY. OSHA COMPLIANT DOUBLE LOCKING, COATED STEEL WIRE GUARD. 3-SPEED, TOTALLY ENCLOSED, PERMANENTLY LUBRICATED BALL BEARING MOTOR. FACTORY PRE-WIRED POWER CORD. PROVIDE FACTORY WALL MOUNTING BRACKET. PROVIDE ENGRAVED PLASTIC LABEL AT EACH UNIT WITH UNIT DESIGNATION IN 1" HIGH WHITE LETTERS ON A BLACK BACKGROUND. MOUNT TO UNDERSIDE OF CANOPY OR EXISTING OVERHANG, FACING DOWNWARD, 12" LATERALLY FROM THE FAN LOCATION. REMOVE PULL CHAIN EXTENSION AT ON/OFF SWITCH IN FIELD. FACTORY CERTIFIED FOR OUTDOOR INSTALLATION. 					



Chick-fil-A
5200 Buffington Road
Atlanta, Georgia
30349-2998



Kurzynske & Associates
2705 Lebanon Pike - Suite One
Nashville, Tennessee 37214
Telephone: (615) 255-5203



CHICK-FIL-A
EASTGATE FSU
874 EASTGATE NORTH DR
CINCINNATI, OH 45245

FSR#01956
BUILDING TYPE / SIZE: S06C-R
RELEASE: v2.20.08

REVISION SCHEDULE

NO.	DATE	DESCRIPTION

CONSULTANT PROJECT # 22124.CD.R
PRINTED / ISSUE FOR CONSTRUCTION
DATE 09/08/2022
DRAWN BY DSF

Information contained on this drawing and in all digital files produced for above named project may not be reproduced in any manner without express written or verbal consent from authorized project representatives.

SHEET HVAC CANOPY PLANS

SHEET NUMBER

M-251

ISSUE FOR CONSTRUCTION

HOOD SCHEDULE											
MARK	EXHAUST CFM	SP @ TAB PORT	CAPTURE JET CFM & S.P.	TYPE	COLLAR SIZE	WIDTH	DEPTH	HEIGHT	MANUFACTURER	MODEL	REMARKS
HOOD#1L NEW	709	0.13"	47 @ 0.30"	BACKSHELF	8"X8"	63"	37"	38"	HALTON	KVL-2	1
HOOD#1R NEW	1204	0.13"	80 @ 0.30"	BACKSHELF	11"X10"	107"	37"	38"	HALTON	KVL-2	1
HOOD#2 NEW	701	0.30"	30 @ 0.29"	BACKSHELF	8"X8"	45"	34"	38"	HALTON	KVL-C	1
HOOD#3 NEW	701	0.30"	30 @ 0.29"	BACKSHELF	8"X8"	42"	34"	38"	HALTON	KVL-C	1

NOTES: DIMENSIONS OF HOODS INCLUDE BACK AND SIDE SPACERS (HEIGHT DOES NOT INCLUDE CLOSURE PANELS).

REMARKS: 1. HOOD SHOP DRAWINGS ARE INCLUDED FOR REFERENCE ON SHEET MH-101. REFER TO SHOP DRAWINGS FOR HOOD OPTIONS AND CONSTRUCTION.

KITCHEN HOOD SYSTEMS NOTES

- CHICK-FIL-A MAINTAINS A NATIONAL ACCOUNT WITH HALTON CO. FOR THE HOODS. CHICK-FIL-A WILL PURCHASE AND PROVIDE THE HOODS FOR INSTALLATION BY THE MECHANICAL CONTRACTOR. THE MECHANICAL CONTRACTOR SHALL BE RESPONSIBLE FOR RECEIVING THE HOODS. CONTACT HALTON CO. AT 270-237-5600 FOR MORE INFO.
- THE FIRE SUPPRESSION SYSTEM SHALL CONSIST OF A COMPLETE WET ANSUL SYSTEM FURNISHED BY HALTON. THE HOOD SHALL BE FURNISHED PRE-PIPED BY HALTON.
- THE R-102 ANSUL FIRE SUPPRESSION SYSTEM EXTERNAL TO THE HOODS SHALL BE INSTALLED IN ACCORDANCE WITH HOOD MANUFACTURER'S SHOP DRAWINGS BY AN AUTHORIZED ANSUL SYSTEM INSTALLER SELECTED AND HIRED BY HALTON. COST FOR ANSUL INSTALLATION INCLUDED IN PRICE OF HOODS TO CFA.
- HOOD EXHAUST DUCTWORK SHALL BE 16 GA. BLACK STEEL WITH CONTINUOUS LIQUID TIGHT WELD OF JOINTS & SEAMS.
- URNS IN GREASE EXHAUST DUCTWORK SHALL BE LONG RADIUS TYPE, WITH A CENTERLINE RADIUS R=3W/2, UNLESS OTHERWISE NOTED. NO MITERED FITTINGS ALLOWED.
- ALL STAINLESS STEEL CLOSURE PANELS SHALL BE SUPPLIED BY HOOD MANUFACTURER AND INSTALLED BY THE MECHANICAL CONTRACTOR ACCORDING TO MANUFACTURER'S RECOMMENDATIONS.
- SLOPE ALL GREASE EXHAUST DUCT BACK TO HOOD AT 1/4" PER FOOT OF RUN.
- WRAP NEW GREASE DUCT WITH UNIFRAX FyreWrap. INSULATION ON ACCESS DOORS SHALL BE INSTALLED ACCORDING TO MANUFACTURER'S INSTALLATION RECOMMENDATIONS. UNIFRAX FyreWrap PRODUCT USED SHALL MEET LOCAL CODE REQUIREMENTS.
- SUPPORT ALL HOODS WITH THREADED ROD AT EACH FACTORY SUPPORT POINT. EACH SUPPORT POINT MUST SUPPORT THE HOOD WEIGHT EQUALLY. ATTACH TO STRUCTURE AS DETAILED ON STRUCTURAL DRAWINGS. ATTACH HOOD TO WALL AT 16" INTERVALS ALONG FULL LENGTH OF HOOD ON TOP AND BOTTOM. ATTACHMENT TO WALL REQUIRES FIELD DRILLING OF SUPPORT ANGLE AT BACK OF HOODS. EACH WALL ATTACHMENT POINT MUST OCCUR AT A WALL STUD. ATTACHMENT HARDWARE TO BE #12-24 HEX HEAD SHEET METAL SCREW EQUAL TO TEXTRON SDS EDT265. LENGTH AS REQUIRED TO FULLY PENETRATE THE STUD.
- MECHANICAL CONTRACTOR TO PROVIDE AND INSTALL SUNCOAST H.E.S. SYSTEM FOR ALL HOODS. SEE HOOD FAN/EQUIPMENT INTERLOCK WIRING DIAGRAM ON SHEET M-501 FOR MORE INFORMATION.

GREASE EXHAUST DUCT CLEARANCE NOTE:
CLEARANCES ABOVE CEILING ARE TIGHT. MECHANICAL CONTRACTOR TO FIELD VERIFY EXACT ROUTING AND CLEARANCES PRIOR TO FABRICATING GREASE EXHAUST DUCT.

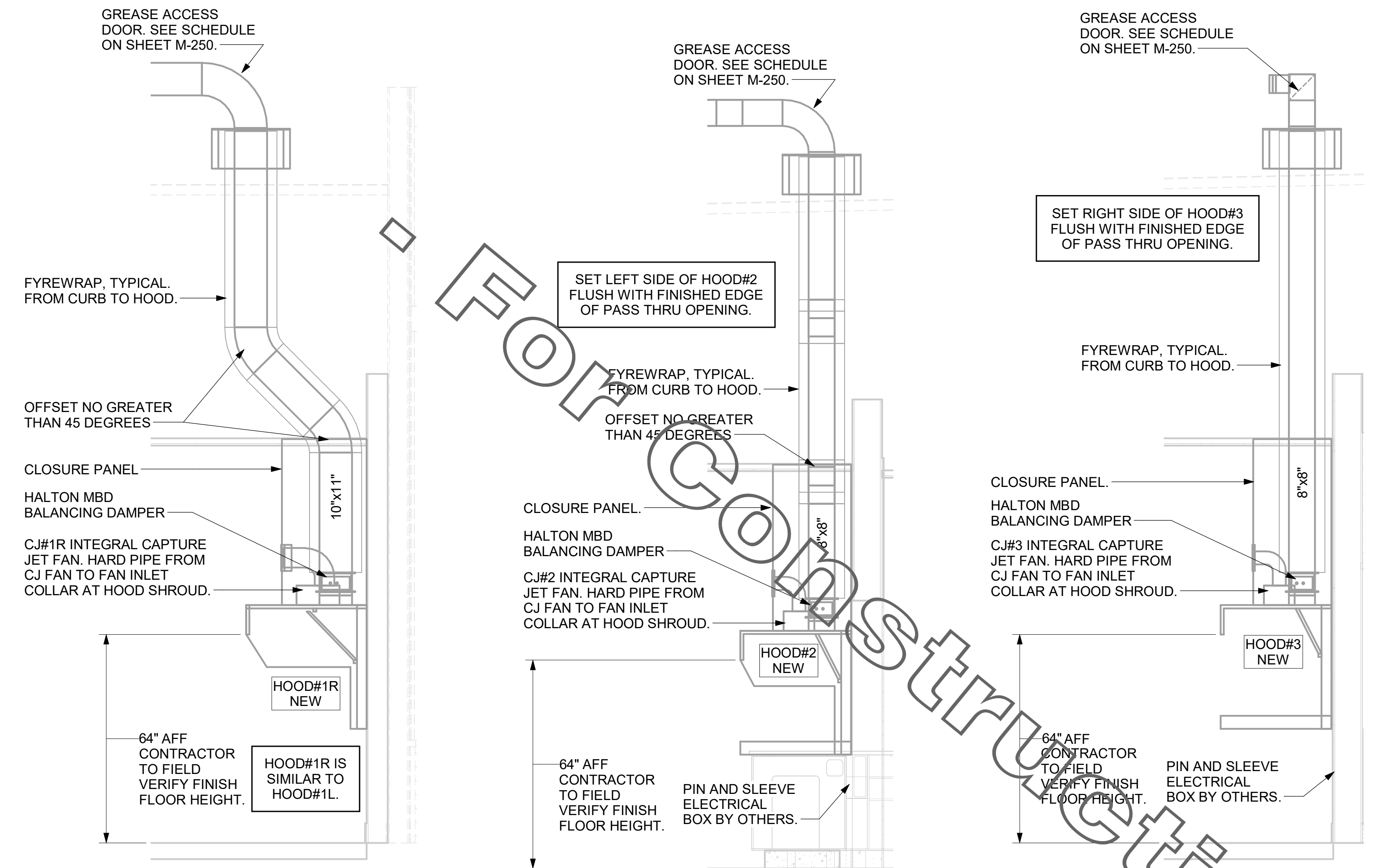
CLEANOUT DOOR NOTE:
DUCT WRAP SHALL BE APPLIED TO THE CLEANOUT DOOR PER THE WRAP MFR'S INSTALLATION INSTRUCTIONS. NO EXCEPTIONS. ALSO, THE CLEANOUT DOOR MUST BE REMOVABLE WITHOUT TOOLS AND MUST BE CLEARLY AND PERMANENTLY LABELED.

NOTE: SEE ARCHITECTURAL PLANS FOR HOOD LOCATIONS.

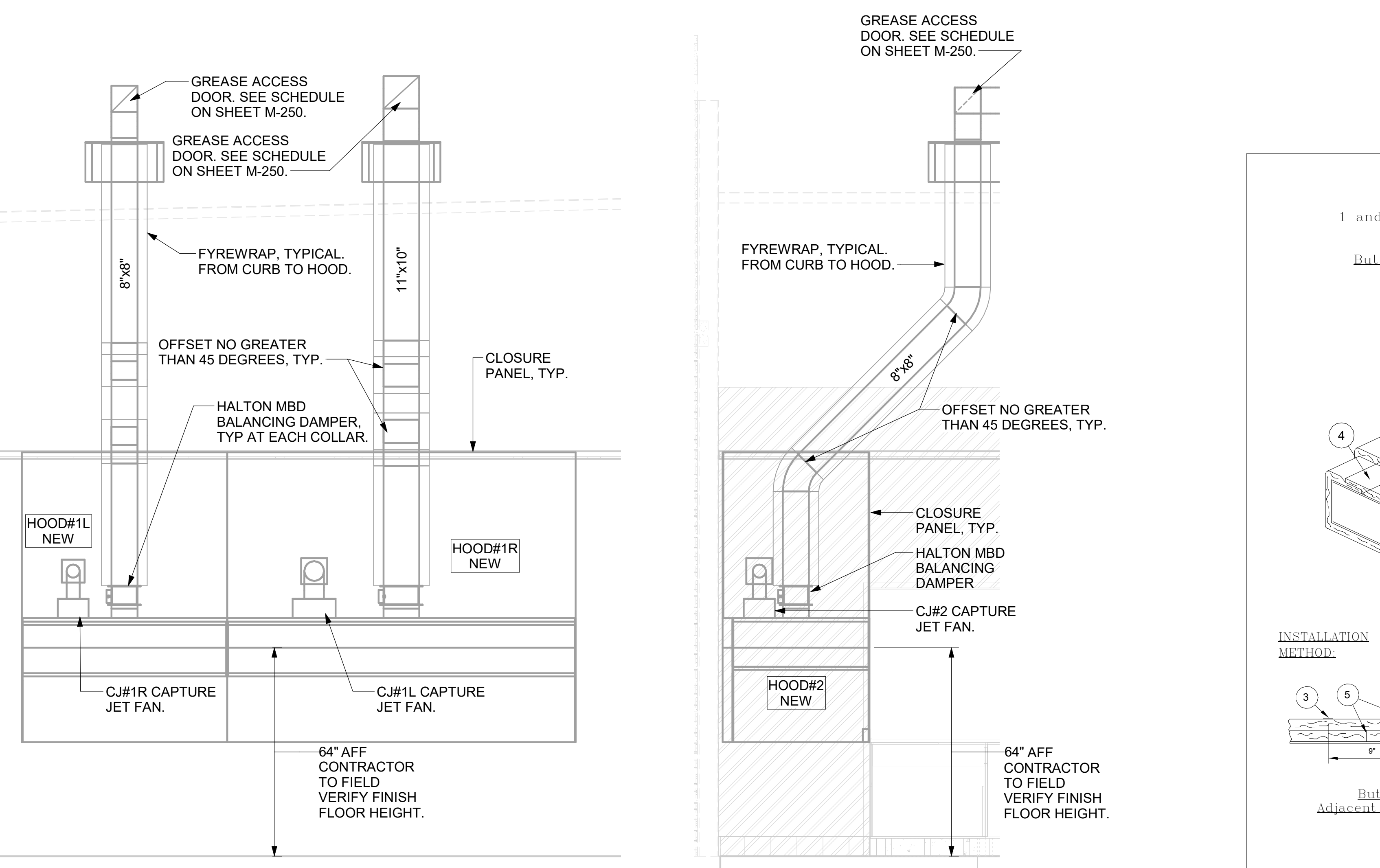


Chick-fil-A
5200 Buffington Road
Atlanta, Georgia
30349-2998

Kurzynske & Associates
2705 Lebanon Pike - Suite One
Nashville, Tennessee 37214
Telephone: (615) 255-5203



3 HOOD#1 SIDE ELEVATION NOT TO SCALE
5 HOOD#2 SIDE ELEVATION NOT TO SCALE
7 HOOD#3 SIDE ELEVATION NOT TO SCALE



4 HOOD#1 FRONT ELEVATION NONE
6 HOOD#2 FRONT ELEVATION NOT TO SCALE

FyreWrap® Elite 1.5 Duct Insulation
Commercial Kitchen Grease Duct System
ASTM E 2336/ICCES AC101 System
1 and 2 Hour Fire-Rated Enclosure, Shaft Alternative
Zero Clearance to Combustibles
Intertek Design No. UNI/BI 120-02
Butt Joint System (Both Layers, Max. 24" x 24" Duct)

INSTALLATION METHOD:

- FyreWrap Elite 1.5 Duct Insulation, Two Layers (each 1 1/2" total thickness = 3")
- Flame Tape (Combustion Hold)
- 1/2" Carbon or SS Banding Straps (Permanent Hold)
- 2" Minimum Longitudinal Overlap
- 1" Compressed Butt Joint
- 3" Wide Aluminum Foot Tape at 2nd Layer Transverse Butt Joints

Legend:
1 FyreWrap Elite 1.5 Duct Insulation, Two Layers (each 1 1/2" total thickness = 3")
2 Flame Tape (Combustion Hold)
3 1/2" Carbon or SS Banding Straps (Permanent Hold)
4 2" Minimum Longitudinal Overlap
5 1" Compressed Butt Joint
6 3" Wide Aluminum Foot Tape at 2nd Layer Transverse Butt Joints

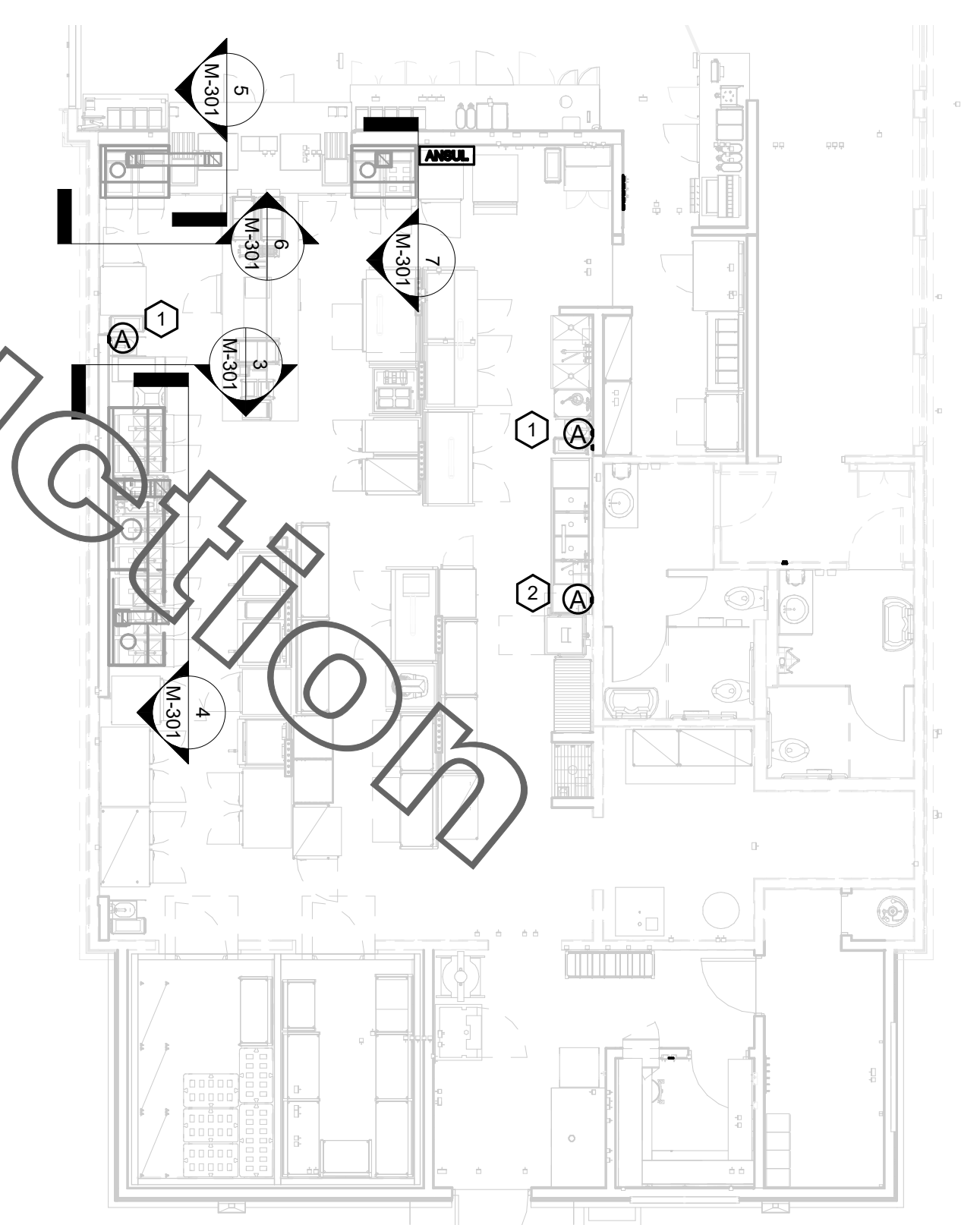
Butt Joint
Adjacent Blanked Pieces

Legend:
1 FyreWrap Elite 1.5 Duct Insulation, Two Layers (each 1 1/2" total thickness = 3")
2 Flame Tape (Combustion Hold)
3 1/2" Carbon or SS Banding Straps (Permanent Hold)
4 2" Minimum Longitudinal Overlap
5 1" Compressed Butt Joint
6 3" Wide Aluminum Foot Tape at 2nd Layer Transverse Butt Joints

Legend:
1 FyreWrap Elite 1.5 Duct Insulation, Two Layers (each 1 1/2" total thickness = 3")
2 Flame Tape (Combustion Hold)
3 1/2" Carbon or SS Banding Straps (Permanent Hold)
4 2" Minimum Longitudinal Overlap
5 1" Compressed Butt Joint
6 3" Wide Aluminum Foot Tape at 2nd Layer Transverse Butt Joints

KEY NOTES

- ANSUL PULL STATIONS SERVING HOOD#2 AND HOOD#3. LOCATE ANSUL PULL STATIONS BETWEEN 42" AND 48" AFF. COORDINATE EXACT LOCATION WITH KITCHEN EQUIPMENT ELEVATIONS. J-BOX AND CONDUIT ARE BY ELECTRICAL. PROVIDE WHITE BAKELITE LABEL WITH 1/4" HIGH LETTERS INDICATING THE HOODS SERVED, I.E. "PASS-THRU HOODS". BOTH PULL STATIONS SERVE THE SAME REMOTE MOUNTED ANSUL TANKS.
- ANSUL PULL STATION SERVING HOOD#1L AND HOOD#1R. LOCATE ANSUL PULL STATION BETWEEN 42" AND 48" AFF. COORDINATE EXACT LOCATION WITH KITCHEN EQUIPMENT ELEVATIONS. J-BOX AND CONDUIT ARE BY ELECTRICAL. PROVIDE WHITE BAKELITE LABEL WITH 1/4" HIGH LETTERS INDICATING THE HOODS SERVED, I.E. "MAIN COOKLINE HOODS".



1 HOOD LAYOUT 1/8" = 1'-0"

CHICK-FIL-A
EASTGATE FSU
874 EASTGATE NORTH DR
CINCINNATI, OH 45245

FSR#01956
BUILDING TYPE / SIZE: S06C-R
RELEASE: v2.20.08

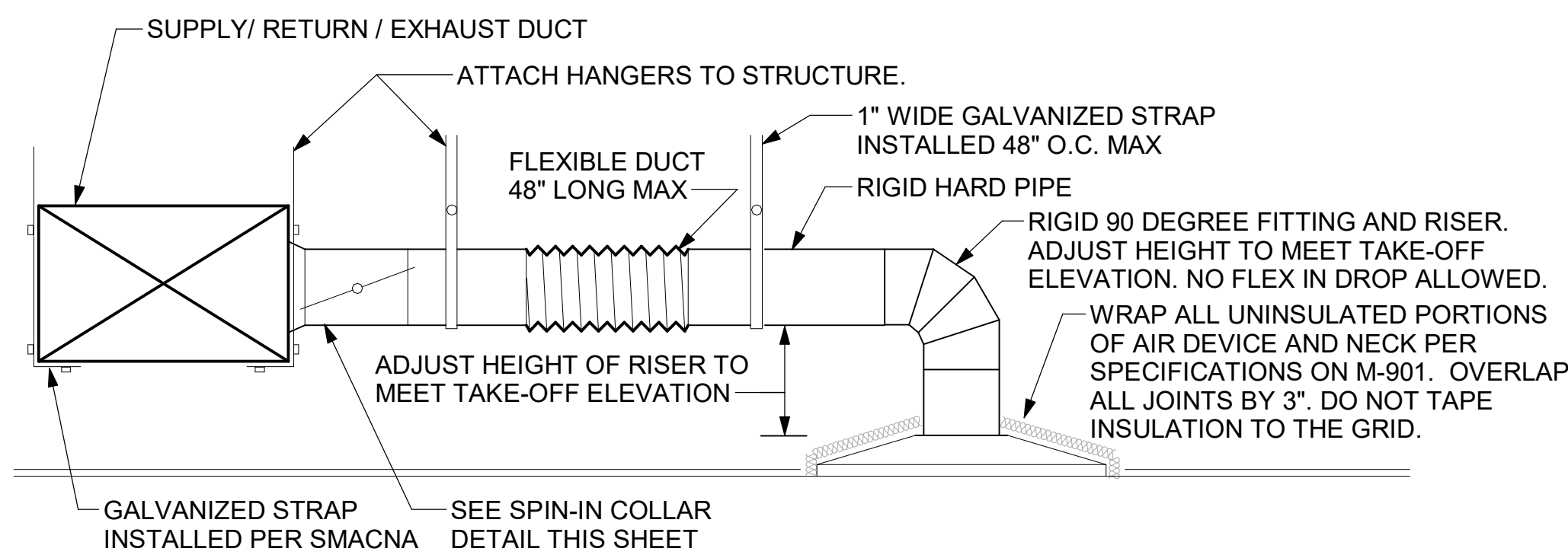
REVISION SCHEDULE
NO. DATE DESCRIPTION

ISSUE FOR CONSTRUCTION
CONSULTANT PROJECT # 22124.CD.R
PRINTED ISSUE FOR CONSTRUCTION
DATE 09/08/2022
DRAWN BY DSF

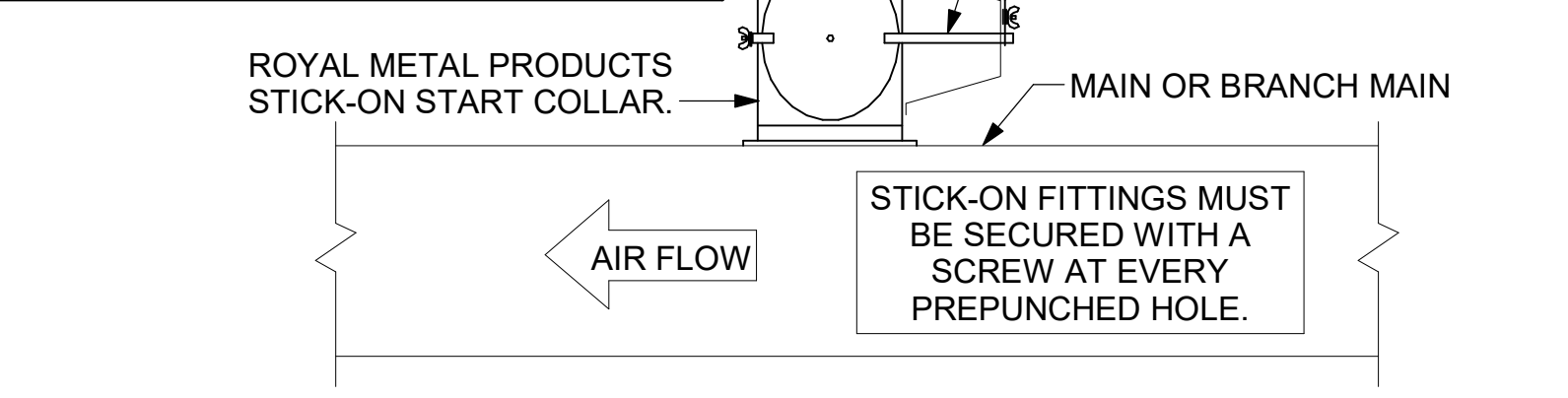
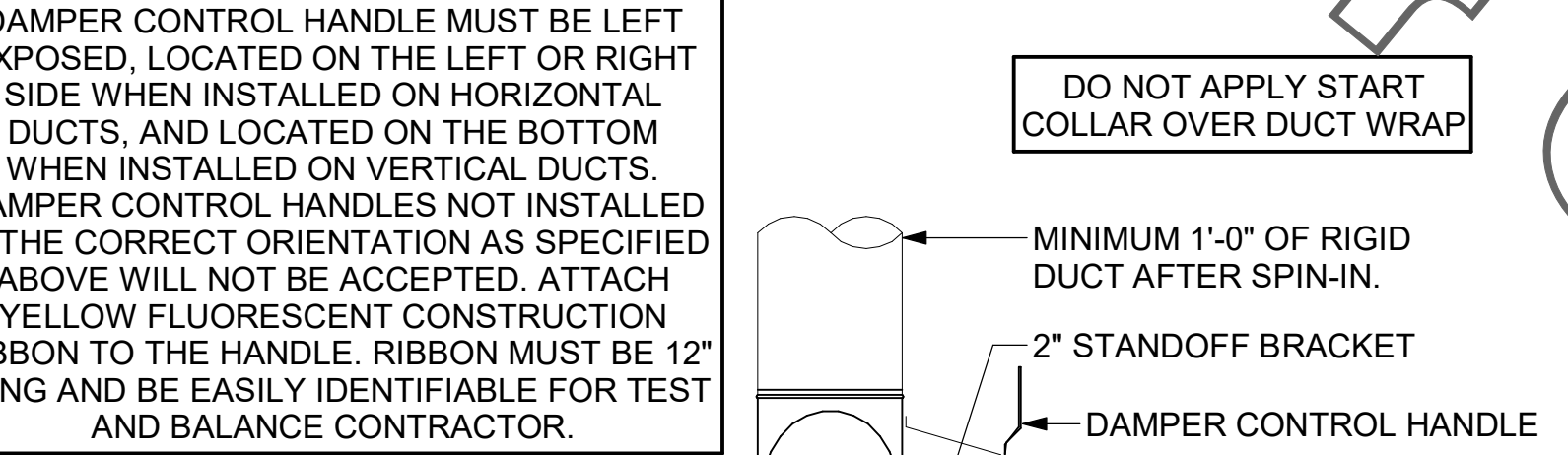
Information contained on this drawing and in all digital files produced for above named project may not be reproduced in any manner without express written or verbal consent from authorized project representatives.

SHEET HOOD DETAILS AND SCHEDULES
SHEET NUMBER

M-301



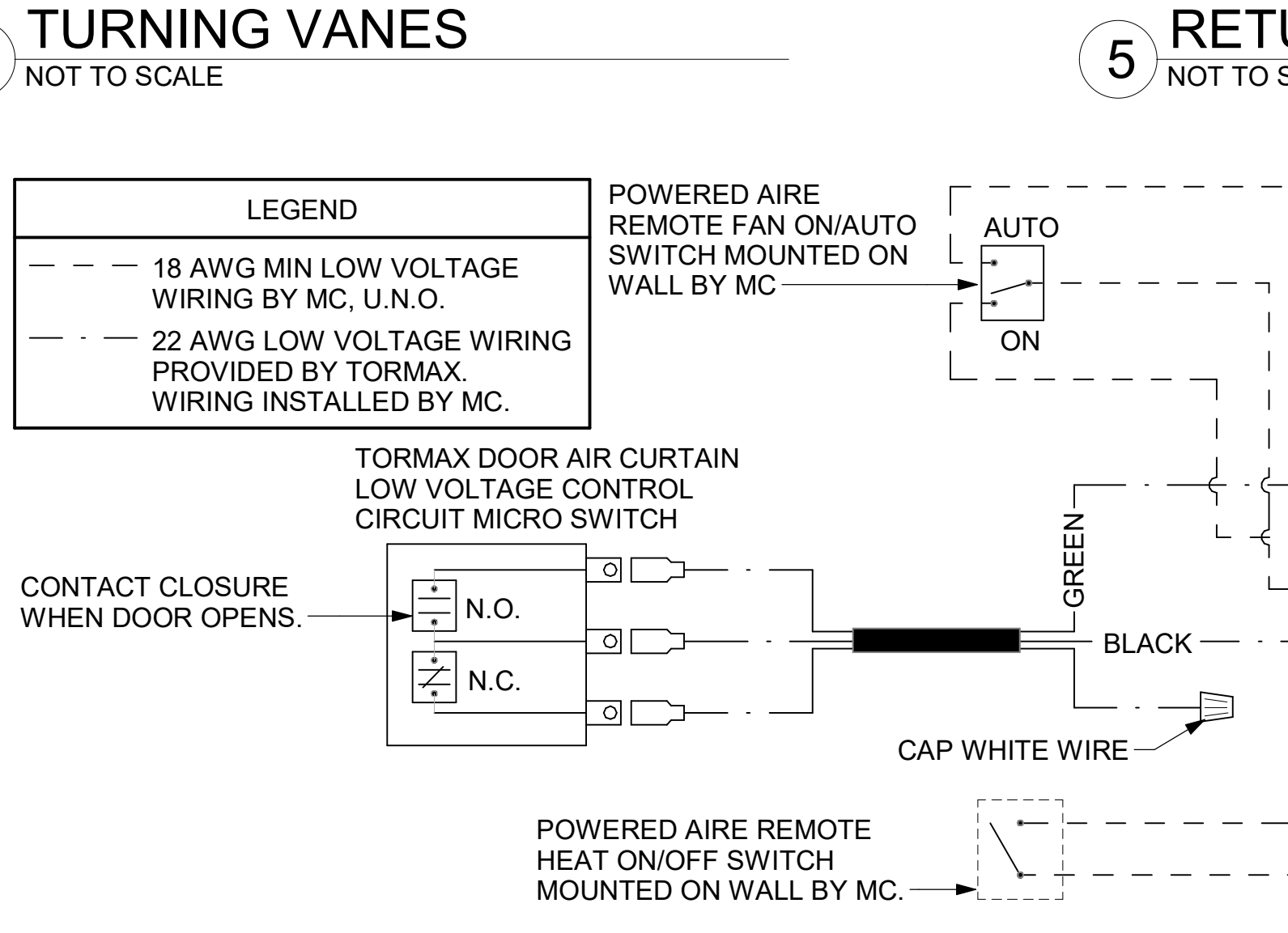
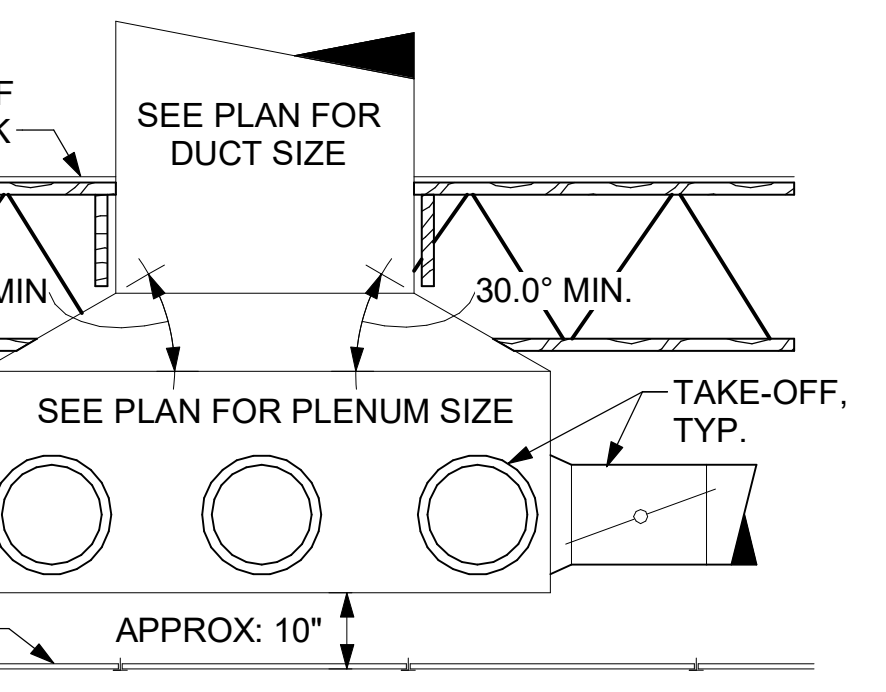
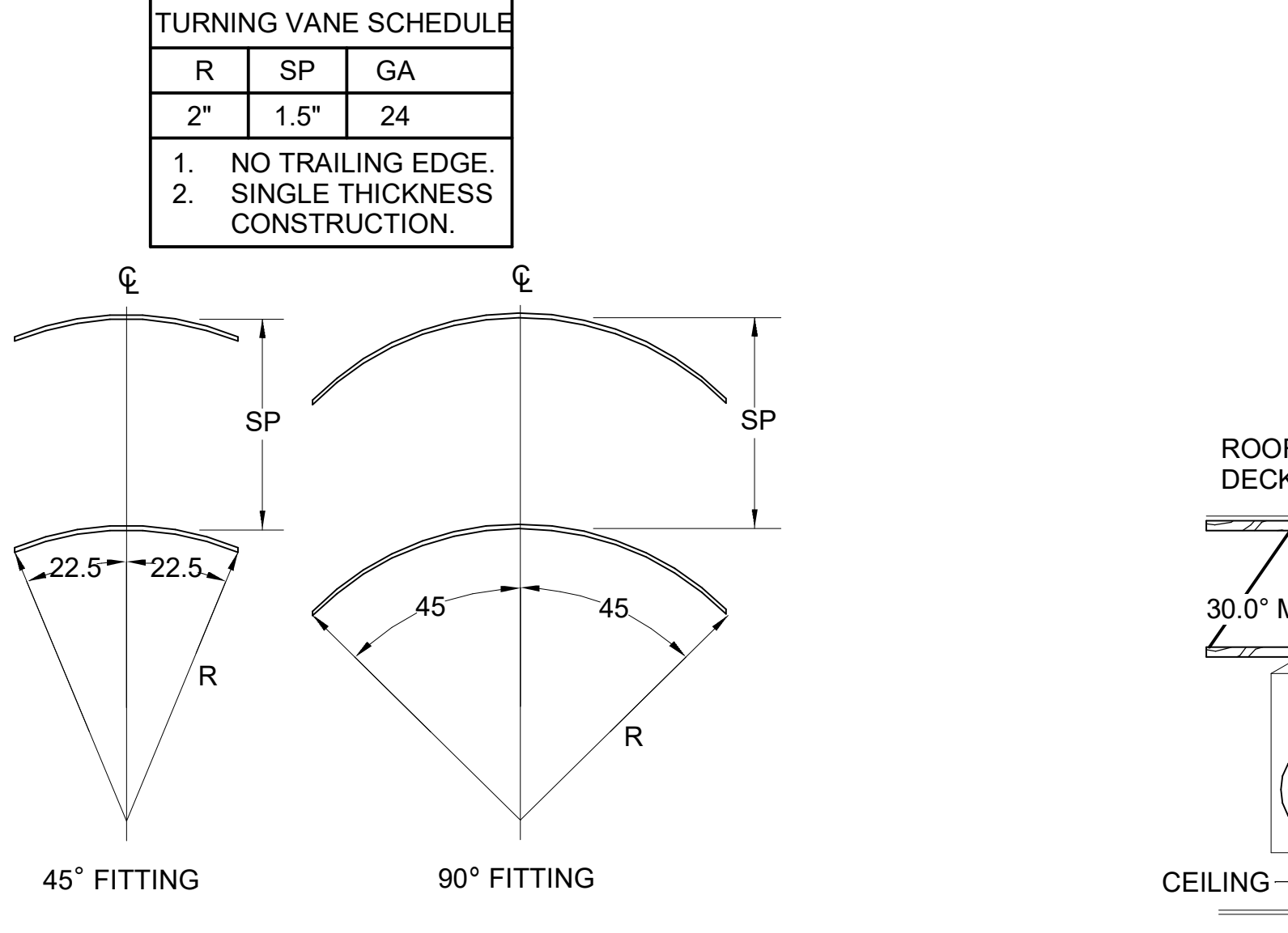
CHICK-FIL-A HAS A NATIONAL ACCOUNT WITH TOM BARROW COMPANY FOR THE ROYAL METAL PRODUCTS START COLLARS FOR BOTH WITH AND WITHOUT A MANUAL BALANCING DAMPER. THE MECHANICAL CONTRACTOR IS REQUIRED TO PURCHASE THE ROYAL METAL PRODUCTS START COLLARS DIRECTLY FROM TOM BARROW COMPANY. CONTACT MR. SCOTT GEORGE AT 404-351-1010 FOR PRICING AND AVAILABILITY. ROYAL METAL PRODUCTS START COLLARS NOT PURCHASED THRU TOM BARROW COMPANY WILL NOT BE ACCEPTED.



TURNING VANE SCHEDULE

R	SP	GA
2"	1.5"	24

- NO TRAILING EDGE.
- SINGLE THICKNESS CONSTRUCTION.



EXHAUST FAN SCHEDULE

MARK	CFM	ESP	RPM	TIP SPEED	HP	AREA SERVED	MODEL	MANUFACTURER	REMARKS
EF#1 NEW	1913	0.75	1331	5226	3/4	HOOD#1L & HOOD#1R	150 CPS	LOREN COOK	1-12
EF#2 NEW	1402	0.95	1199	4708	3/4	HOOD#2 & HOOD#3	150 CPS	LOREN COOK	1-12
EF#3 EXIST	400	0.375	--	--	--	RESTROOMS	--	EXISTING	--

NOTES

- GREASE EXHAUST FAN RPM BASED ON 80 DEGREE F AIR AT 1000 FEET ABOVE SEA LEVEL.
- GREASE EXHAUST FANS TO BE U.L. 762 LISTED.
- CHICK-FIL-A HAS A NATIONAL ACCOUNT WITH TOM BARROW COMPANY FOR THE FAN/CURB PACKAGE. MECHANICAL CONTRACTOR IS REQUIRED TO PURCHASE THE FAN/CURB PACKAGE DIRECTLY FROM TOM BARROW COMPANY. CONTACT MR. SCOTT GEORGE AT 404-351-1010 FOR PRICING AND AVAILABILITY. FANS AND CURBS NOT PURCHASED THRU TOM BARROW COMPANY WILL NOT BE ACCEPTED.

REMARKS

- UPBLAST ARRANGEMENT 10. CCW ROTATION. SEE PLANS TO CONFIRM CONFIGURATION.
- PROVIDE FACTORY STEEL FAN WHEEL.
- PROVIDE FACTORY INSTALLED, PRE-WIRED, NEMA 3 NON-FUSED DISCONNECT. COORDINATE WITH ELECTRICAL CONTRACTOR.
- PROVIDE FACTORY STEEL INLET FLANGE AND INLET COMPANION FLANGE.
- PROVIDE AND INSTALL ROOF TOP SOLUTIONS G2 DRIP GUARD. MECHANICAL CONTRACTOR TO CONTACT ROOF TOP SOLUTIONS AT 800-979-7034.
- PROVIDE FACTORY WEATHER HOUSING W/ HINGED ACCESS DOOR.
- PROVIDE FACTORY DRAIN CONNECTION.
- PROVIDE FACTORY BOLTED ACCESS DOOR ON SCROLL.
- PROVIDE FACTORY INSTALLED BELT DRIVE WITH ADJUSTABLE MOTOR SHEAVE AND SPARE BELT.
- PROVIDE FACTORY STEEL OUTLET COMPANION FLANGE.
- INTEGRAL THERMAL OVERLOAD WITH AUTOMATIC RESET.
- UTILITY SET FAN CURB AND ASSOCIATED EXHAUST DUCT CURB PROVIDED BY TOM BARROW COMPANY.

AIR DOOR SCHEDULE

MARK	CFM	VELOCITY	HEATING CAP	HP	AREA SERVED	MODEL	MANUFACTURER	REMARKS
AD#1 NEW	1543	2340 FPM	10 KW	3/4 HP	DRIVE-THRU DOOR	CHA-1-48(E)	POWERED AIRE	1-4
AD#2 NEW	3867	4220 FPM	N/A	3/4 HP	REAR DOOR	RBT-1-48	POWERED AIRE	5
AD#3 NEW	2899	4220 FPM	N/A	3/4 HP	DRIVE-THRU SWING DOOR	RBT-1-36	POWERED AIRE	5

NOTES

- CHICK-FIL-A HAS A NATIONAL ACCOUNT WITH TOM BARROW COMPANY FOR THE AIR DOORS. THE MECHANICAL CONTRACTOR SHALL PURCHASE THE AIR DOORS DIRECTLY FROM TOM BARROW COMPANY. CONTACT MR. SCOTT GEORGE AT 404-351-1010. FOR PRICING AND AVAILABILITY. AIR DOORS NOT PURCHASED THRU TOM BARROW COMPANY WILL NOT BE ACCEPTED.

REMARKS

- FACTORY PROVIDED, WIRED, AND UNIT MOUNTED SPEED CONTROLLER LOCATED ABOVE CEILING.
- FACTORY WIRED DISCONNECT.
- FACTORY PROVIDED, FIELD INSTALLED BY MC, REMOTE WALL SWITCHES FOR HEATING ON/OFF AND FAN ON/AUTO SWITCH. SEE DETAIL, AIR CURTAIN WIRING DIAGRAM.
- PROVIDE WITH DIVERTER BOX FROM TOM BARROW COMPANY. PROVIDE WITH MOUNTING BRACKETS PER MANUFACTURER'S RECOMMENDATIONS. INSTALL PER MANUFACTURER'S MOUNTING INSTRUCTIONS.
- FACTORY PROVIDED MAGNETIC DOOR CONTACT WITH FACTORY INSTALLED LOW VOLTAGE CONTROLS LOCATED IN AIR DOOR CABINET.

AIR DEVICE SCHEDULE

MARK	DESCRIPTION	LOCATION	NECK SIZE	FACE SIZE	FRAME TYPE	REMARKS
A	PRICE MODEL APDC ALUMINUM SUPPLY AIR DIFFUSER WITH INDIVIDUALLY ADJUSTABLE CURVED AIR PATTERN CONTROLLERS.	DINING/ KITCHEN	VARIES	24"x24"	LAY-IN	1,7
C	PRICE MODEL SMCD STEEL SUPPLY AIR DIFFUSER FIELD ADJUSTABLE AIR PATTERN CONTROLLERS.	ENTRY	14"x14"	19"x19"	BEVELLED	1,3,5,6
D	PRICE MODEL APDC ALUMINUM SUPPLY AIR DIFFUSER WITH INDIVIDUALLY ADJUSTABLE CURVED AIR PATTERN CONTROLLERS.	DINING/ KITCHEN	VARIES	16"x16"	LAY-IN	1,7
F	PRICE MODEL 80 EGGRATE RETURN AIR GRILLE WITH REMOVABLE WHITE CORE, FACTORY FLAT BLACK BACKPAN AND ROUND NECK.	DINING/ KITCHEN	VARIES	24"x24"	LAY-IN	1,7
J	PRICE MODEL SMCD STEEL SUPPLY AIR DIFFUSER FIELD ADJUSTABLE AIR PATTERN CONTROLLERS.	RESTROOMS	10"x10"	15"x15"	BEVELLED	1,2,3,5,6
K	PRICE MODEL APDDR ALUMINUM PERFORATED FACE RETURN AIR GRILLE.	ENTRY/ RESTROOMS	14"x14"	16"x16"	SURFACE	1,4,5,6

NOTES

- CHICK-FIL-A HAS A NATIONAL ACCOUNT WITH TOM BARROW COMPANY FOR THE AIR DEVICES. MECHANICAL CONTRACTOR SHALL PURCHASE THE AIR DEVICES DIRECTLY FROM TOM BARROW COMPANY. CONTACT MR. SCOTT GEORGE AT 404-351-1010. FOR PRICING AND AVAILABILITY. AIR DEVICES NOT PURCHASED THRU TOM BARROW COMPANY WILL NOT BE ACCEPTED.

REMARKS

- STANDARD OFF WHITE FINISH.
- PROVIDE MODEL VC53 NECK DAMPER.
- SEE DRAWING M-201 FOR THROW.
- PROVIDE MODEL VCR7 NECK DAMPER ON GRILLES IN RESTROOMS SERVING EXHAUST FAN.
- PROVIDE BACKPAN. MC TO SEAL JOINTS WITH MASTIC AND INSULATE EXTERNALLY.
- FIELD INSULATE BACKPAN AS SHOWN ON DETAIL 1/M-401.
- FACTORY INSULATED R-6 BACKPAN.

GAS FIRED ROOFTOP UNIT SCHEDULE

MARK	TOTAL COOLING MBH	SENSIBLE COOLING MBH	HEATING INPUT MBH	HEATING OUTPUT MBH	STAGES	SUPPLY	O.A.	HP	ESP	MODEL R-410A	MANUFACTURER	REMARKS
AC#1 NEW	276.3	201.3	400	324	2	8500	2000	6.2	0.80	YSJ300A3S0H	TRANE	1-14
AC#2 NEW	103.1	73.8	200	162	2	2830	750	3.1	0.80	YSJ102A3S0H	TRANE	1-13,15
AC#3 NEW	124.4	95.9	240	194	2	4000	1000	3.1	0.80	YSJ120A3S0H	TRANE	1-13,17
AC#4 NEW	93.2	69.7	200	162	2	2765	600	3.1	0.80	YSJ090A3S0H	TRANE	1-13,16
AC#5 NEW	58.6	43.6	130	104	1	1800	300	1.0	0.80	YHC067E3RH	TRANE	1,4-12,18-20

NOTES

- COOLING CAPACITIES ARE GROSS, BASED ON ENTERING: 80FDB/87FWB, OUTDOOR: 95FDB.
- FOR PROPER BUILDING AIR BALANCE, VERIFY THE AMOUNT OF OUTSIDE AIR PROVIDED BY ALL EXISTING UNITS. ADJUST AS PER SCHEDULE IF NECESSARY.
- VERIFY MIN. 10' DISTANCE OF O.A. INTAKE OPENINGS OF A/C UNITS FROM ANY EXISTING SOURCE OF AIR POLLUTION (EXHAUST FAN, COMBUSTION FLUE, VENT, ETC.). IF SUCH CONDITIONS EXIST, CONTRACTOR IS REQUIRED TO DUCT OUTSIDE AIR INTAKE ON ROOF AWAY FROM ANY SUCH SOURCE.

REMARKS

- PROVIDE DIFFERENTIAL ENTHALPY ECONOMIZER WITH FIELD INSTALLED POWER EXHAUST.
- PROVIDE FACTORY INSTALLED NON-FUSED DISCONNECT.
- PROVIDE FACTORY INSTALLED AND UNIT POWERED 115V GFI SERVICE OUTLET.
- PROVIDE FACTORY INSTALLED RETURN SIDE SMOKE DETECTOR.
- PROVIDE 2" MERV 8 THROW AWAY FILTERS.
- PROVIDE HINGED PANELS FOR FILTER ACCESS, FAN MOTOR ACCESS, COMPRESSOR ACCESS AND CONTROL COMPARTMENT ACCESS.
- ADJUST GAS MAINFOLD PRESSURE AT LOCATIONS WHERE ELEVATION EXCEEDS 2000' ABOVE SEA LEVEL AS RECOMMENDED BY MANUFACTURER.
- PROVIDE FACTORY INSTALLED COIL HAIL GUARD.
- PROVIDE HO3 GAS REPEAT OPTION AND FACTORY PROVIDED REMOTE HUMIDITY SENSOR (BAYSENS036A).
- PROVIDE FACTORY INSTALLED CONDENSATE DRAIN PAN OVERFLOW SWITCH.
- PROVIDE FACTORY INSTALLED MULTI-SPEED FAN OPTION.
- PROVIDE FACTORY SUPPLY AIR TEMPERING KIT.
- PROVIDE HIGH FAULT SCOR (65K).
- PROVIDE WITH CURBS PLUS ADAPTER CURB. UNIT BEING REPLACED IS LENNOX MODEL LGC180H. ADAPTER CURB IS PROVIDED BY TRANE AS PART OF THE TOTAL EQUIPMENT PACKAGE.
- PROVIDE WITH CURBS PLUS ADAPTER CURB. UNIT BEING REPLACED IS LENNOX MODEL LGA102H. ADAPTER CURB IS PROVIDED BY TRANE AS PART OF THE TOTAL EQUIPMENT PACKAGE.
- PROVIDE WITH CURBS PLUS ADAPTER CURB. UNIT BEING REPLACED IS LENNOX MODEL LGA120H. ADAPTER CURB IS PROVIDED BY TRANE AS PART OF THE TOTAL EQUIPMENT PACKAGE.
- PROVIDE WITH CURBS PLUS ADAPTER CURB. UNIT BEING REPLACED IS LENNOX MODEL LGA090H. ADAPTER CURB IS PROVIDED BY TRANE AS PART OF THE TOTAL EQUIPMENT PACKAGE.
- PROVIDE WITH CURBS PLUS ADAPTER CURB. UNIT BEING REPLACED IS LENNOX MODEL LGA060H. ADAPTER CURB IS PROVIDED BY TRANE AS PART OF THE TOTAL EQUIPMENT PACKAGE.
- EC PROVIDED AND INSTALLED DISCONNECT W/ CURRENT LIMITING FUSE.
- PROVIDE FACTORY INSTALLED 115V GFI SERVICE OUTLET.

SPLIT SYSTEM HEAT PUMP SCHEDULE

MARK	COOLING CAPACITY (MBH)		HEATING CAPACITY (MBH)		EFFICIENCIES		FAN SECTION (CFM)		ELECTRICAL DATA			R-410A MODEL		MFR	
	MIN.	MAX.	MIN.	MAX.	SEER	HSPF	MIN.	MAX.	MCA	MOCP	VOLTAGE	AHU	CU		
AHU#1/CU#1 NEW	18.0	33.5	18.0	40.0	16.2	10.0	33	40	635-730-830	28	40	208/1/60	PKA-A36KA7	PUZ-HA36NHA5	MITSUBISHI

NOTES

- MECHANICAL CONTRACTOR SHALL PURCHASE THE SPLIT SYSTEM HEAT PUMP DIRECTLY FROM TRANE/MITSUBISHI. CONTACT MS. LAURI FRANKOWSKI AT 630-400-4285, FOR PRICING AND AVAILABILITY.

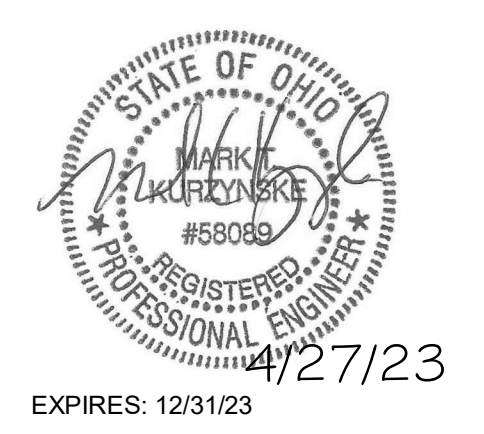
REMARKS

- ELECTRICIAN TO PROVIDE NON-FUSED DISCONNECT.
- MECHANICAL TO PROVIDE AND INSTALL REFRIGERANT PIPING AS PER MFR RECOMMENDATIONS.
- PROVIDE ENGRAVED PLASTIC LABEL AT AHU AND CU WITH 1" HIGH WHITE LETTERS ON A BLACK BACKGROUND RIVETED TO UNIT CABINET.
- PROVIDE WITH ADEQUATE REFRIGERANT LINE SET. FIELD VERIFY DISTANCE FROM WHERE CONDENSER IS TO BE SET TO WHERE AIR HANDLER IS TO BE MOUNTED PRIOR TO ORDERING.
- PROVIDE WITH WALL MOUNTED THERMOSTAT (TAR-C01MAU-SB). USE TWO-WIRE, STANDARD, NON-POLAR CONTROL WIRE TO CONNECTOR TB15 ON INDOOR UNIT CONTROLLER. PROGRAM THERMOSTAT CONTROLS TO MATCH DRIVE THRU SET POINTS.
- PROVIDE PAC-SE55RA-E CONNECTOR AT INDOOR UNIT (CONNECTOR CN32), WIRE ORANGE AND RED WIRES TO SPARE POLE ON RELAY R-1 IN SUNCOAST T500 PANEL (TERMINALS 11 AND 7 RESPECTIVELY) AND CAP THE BROWN WIRE.
- PROVIDE WITH CONDENSATE PUMP (BLUE DIAMOND MAXI BLUE MODEL# X87-721).



Chick-Fil-A
5200 Buffington Road
Atlanta, Georgia
30349-2998

Kurzynske & Associates
2705 Lebanon Pike - Suite One
Nashville, Tennessee 37214
Telephone: (615) 255-5203



EXPIRES: 12/31/23
12/27/23

CHICK-FIL-A
EASTGATE FSU
874 EASTGATE NORTH DR
CINCINNATI, OH 45245

FSR#01956
BUILDING TYPE / SIZE: S06C-R
RELEASE: v2.20.08

REVISION SCHEDULE

NO.	DATE	DESCRIPTION

ISSUE FOR CONSTRUCTION

CONSULTANT PROJECT # 22124.CD.R
PRINTED / ISSUE FOR CONSTRUCTION
DATE 09/08/2022
DRAWN BY DSF
Information contained on this drawing and in all digital files produced for above named project may not be reproduced in any manner without express written or verbal consent from authorized project representatives.
SHEET HVAC DETAILS AND SCHEDULES
SHEET NUMBER M-401

PROVIDE A PROFESSIONALLY LAMINATED COPY OF THESE DETAILS TO BE INSTALLED INSIDE THE ROOFTOP UNIT CONTROL CABINET. USE A SETON CHART FRAME STYLE #68624, TELEPHONE NUMBER 800-243-6624, FOR MOUNTING THE DETAIL. ATTACH THE FRAME TO THE INTERIOR OF THE UNIT IN PLAIN AND EASY VIEW OF THE CONTROLS SECTION. CONTACT ENGINEER OF RECORD FOR A REPRODUCIBLE COPY OF THE DETAIL.

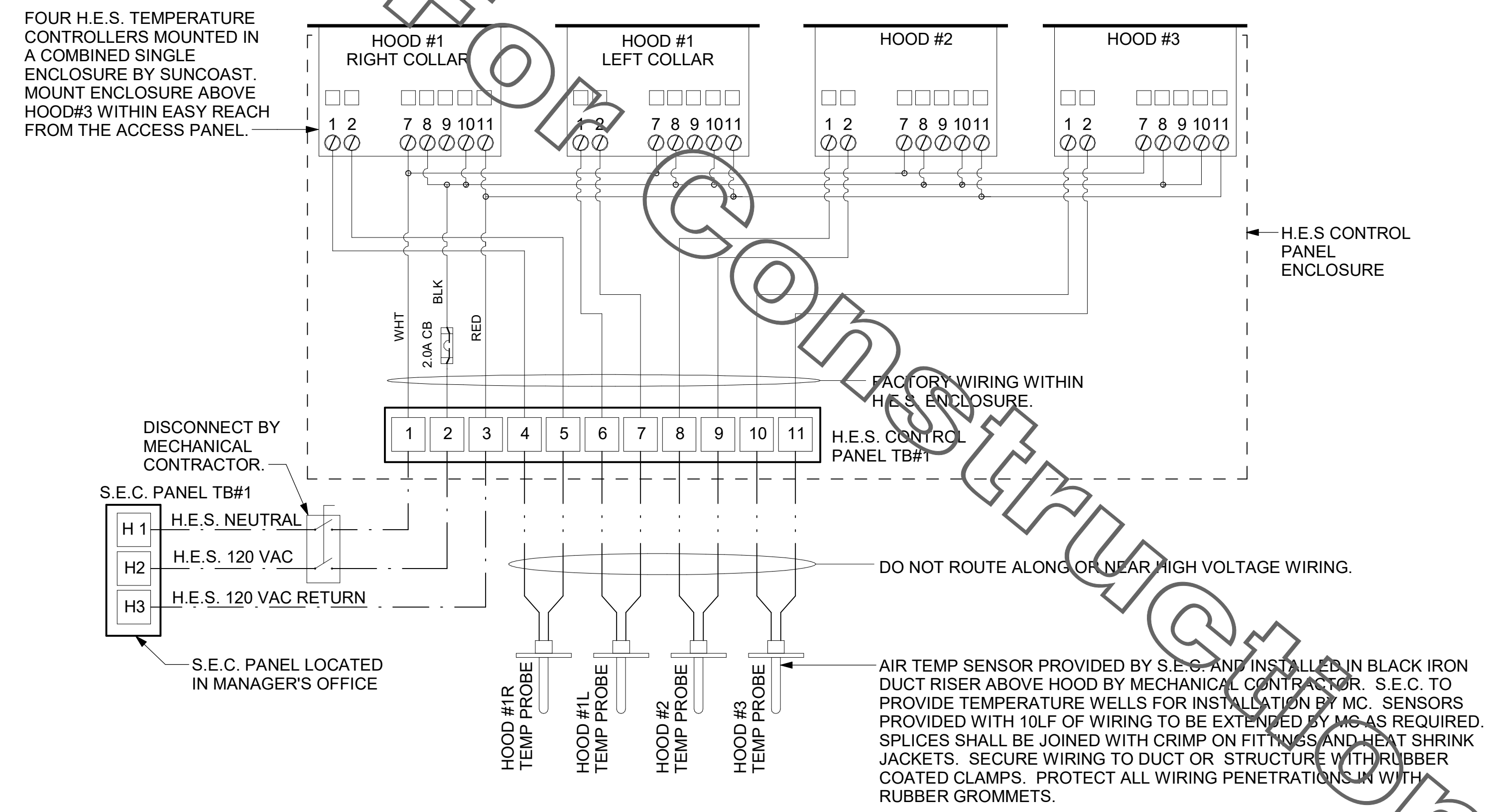
LEGEND	
S.E.C.	SUNCOAST ENVIRONMENTAL CONTROLS CFA-500 ENERGY MGT PANEL
H.E.S.	SUNCOAST ENVIRONMENTAL CONTROLS HOOD EXHAUST SAFETY CONTROLLER
M.C.	MECHANICAL CONTRACTOR
	18 AWG MIN UNSHIELDED LOW VOLTAGE WIRING BY M.C. U.N.O.
	120 VAC WIRING BY MECHANICAL CONTRACTOR

GENERAL NOTES

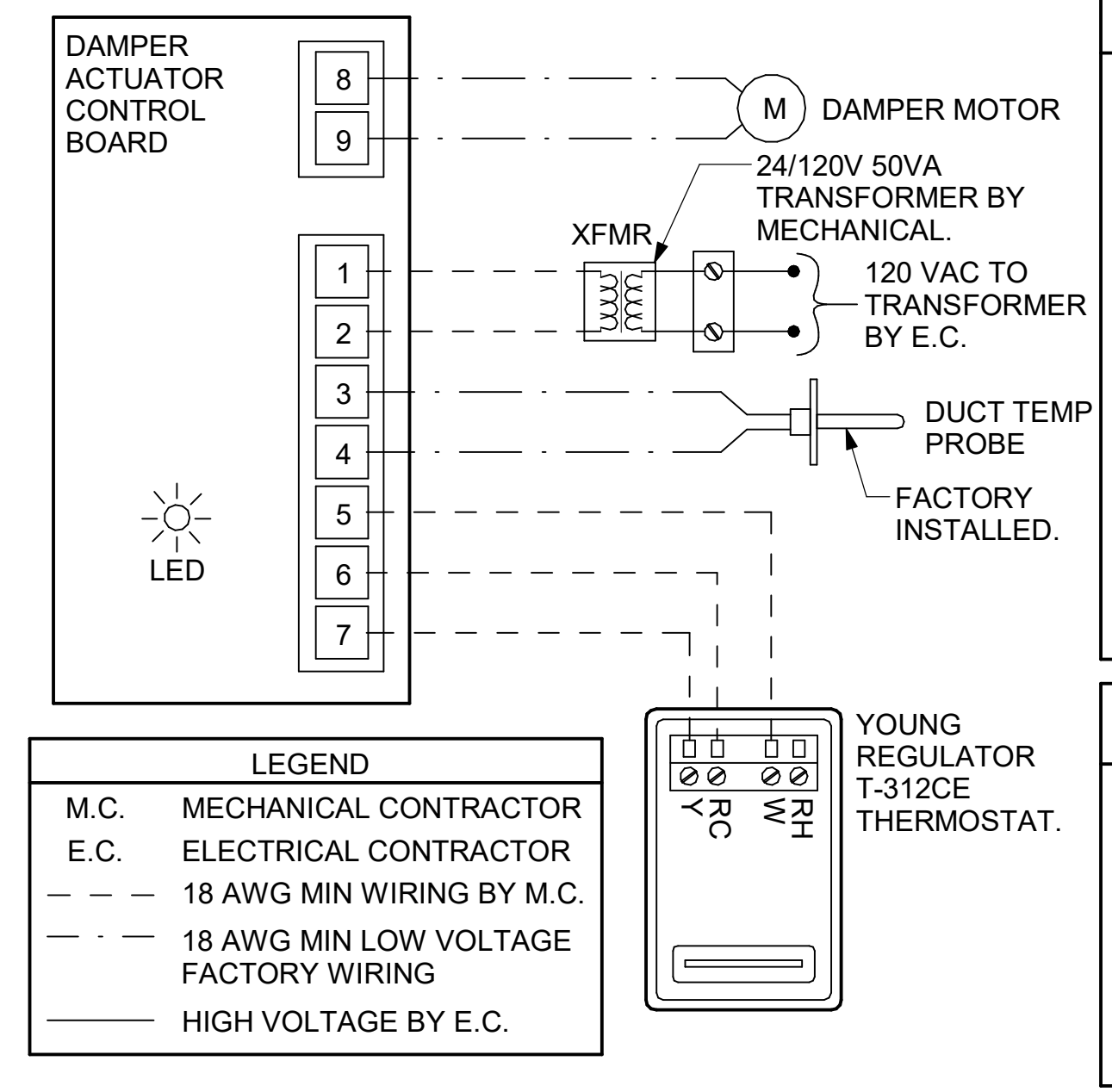
- MECHANICAL CONTRACTOR TO PURCHASE THE H.E.S. CONTROL PANEL AND COMPONENTS FROM SUNCOAST ENVIRONMENTAL CONTROLS. TELEPHONE 877-544-6679.
- CONTROLS COMPONENTS TO BE FACTORY MOUNTED IN LABELED NEMA-1 ENCLOSURES.
- MECHANICAL CONTRACTOR TO PROVIDE A PROFESSIONALLY LAMINATED COPY OF THIS DETAIL ATTACHED TO THE ENCLOSURE. CONTACT ENGINEER OF RECORD FOR A REPRODUCIBLE COPY OF THE DETAIL.

S.E.C. H.E.S. OPERATION

IN THE EVENT THAT ANY COOKING EQUIPMENT ITEM BENEATH ANY HOOD IS STARTED WITHOUT THE 'STORE SWITCH' BEING IN THE 'OCCUPIED' POSITION, THE H.E.S. CONTROLLER WILL SENSE THE HEAT RISE WITHIN THE HOOD CANOPY AND ENERGIZE THE EXHAUST FANS.



1 HOOD FAN/EQUIPMENT INTERLOCK
NOT TO SCALE



2 VAV DAMPER AND TSTAT - MGRS OFFICE
NOT TO SCALE

NOTES

- SEE DWG M-201 FOR COMPONENT MODEL NUMBERS AND ORDERING INFORMATION.
- 120V POWER FOR TRANSFORMER TO BE NON-SWITCHED AND LIVE 24 HOURS EACH DAY.
- PROVIDE ALL NECESSARY WIRING AND COMPONENTS TO MAKE CONTROL AND POWER CONNECTIONS TO TRANSFORMER, ZONE DAMPER, AND THERMOSTAT PER MANUFACTURER'S IOM.
- PROVIDE MYLAR LABEL AT ALL NEW THERMOSTATS WITH 1/4" HIGH WHITE LETTERING ON BLACK BACKGROUND, I.E. "OFFICE THERMOSTAT". PLACE LABELS ON WALL ADJACENT TO DEVICE. DO NOT APPLY DIRECTLY ON DEVICE.

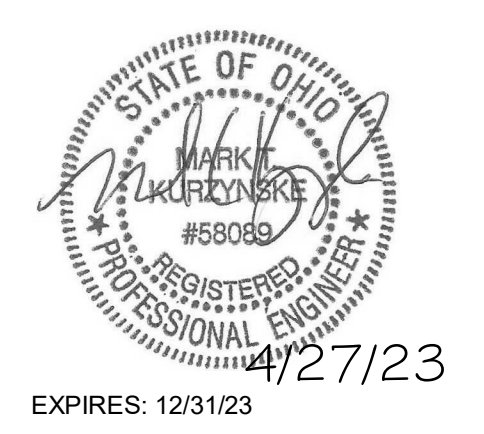
SEQUENCE OF OPERATION

- WHEN THE SUPPLY AIR TEMPERATURE IS LESS THAN 72F THE DAMPER WILL OPEN FULLY ON A RISE IN SPACE TEMPERATURE ABOVE THE SETPOINT.
- WHEN THE SUPPLY AIR TEMPERATURE IS GREATER THAN 71F THE DAMPER WILL OPEN FULLY ON A FALL IN SPACE TEMPERATURE BELOW THE SETPOINT.



Chick-fil-A
Chick-fil-A
 5200 Buffington Road
 Atlanta, Georgia
 30349-2998

Kurzynske & Associates
 2705 Lebanon Pike - Suite One
 Nashville, Tennessee 37214
 Telephone: (615) 255-5203



CHICK-FIL-A
EASTGATE FSU
 874 EASTGATE NORTH DR
 CINCINNATI, OH 45245

FSR#01956
 BUILDING TYPE / SIZE: S06C-R
 RELEASE: v2.20.08

REVISION SCHEDULE		
NO.	DATE	DESCRIPTION

CONSULTANT PROJECT # 22124.CD.R
 PRINTED ISSUE FOR CONSTRUCTION
 DATE 09/08/2022
 DRAWN BY DSF

Information contained on this drawing and in all digital files produced for above named project may not be reproduced in any manner without express written or verbal consent from authorized project representatives.
 SHEET HVAC CONTROLS

SHEET NUMBER
M-501

For Construction

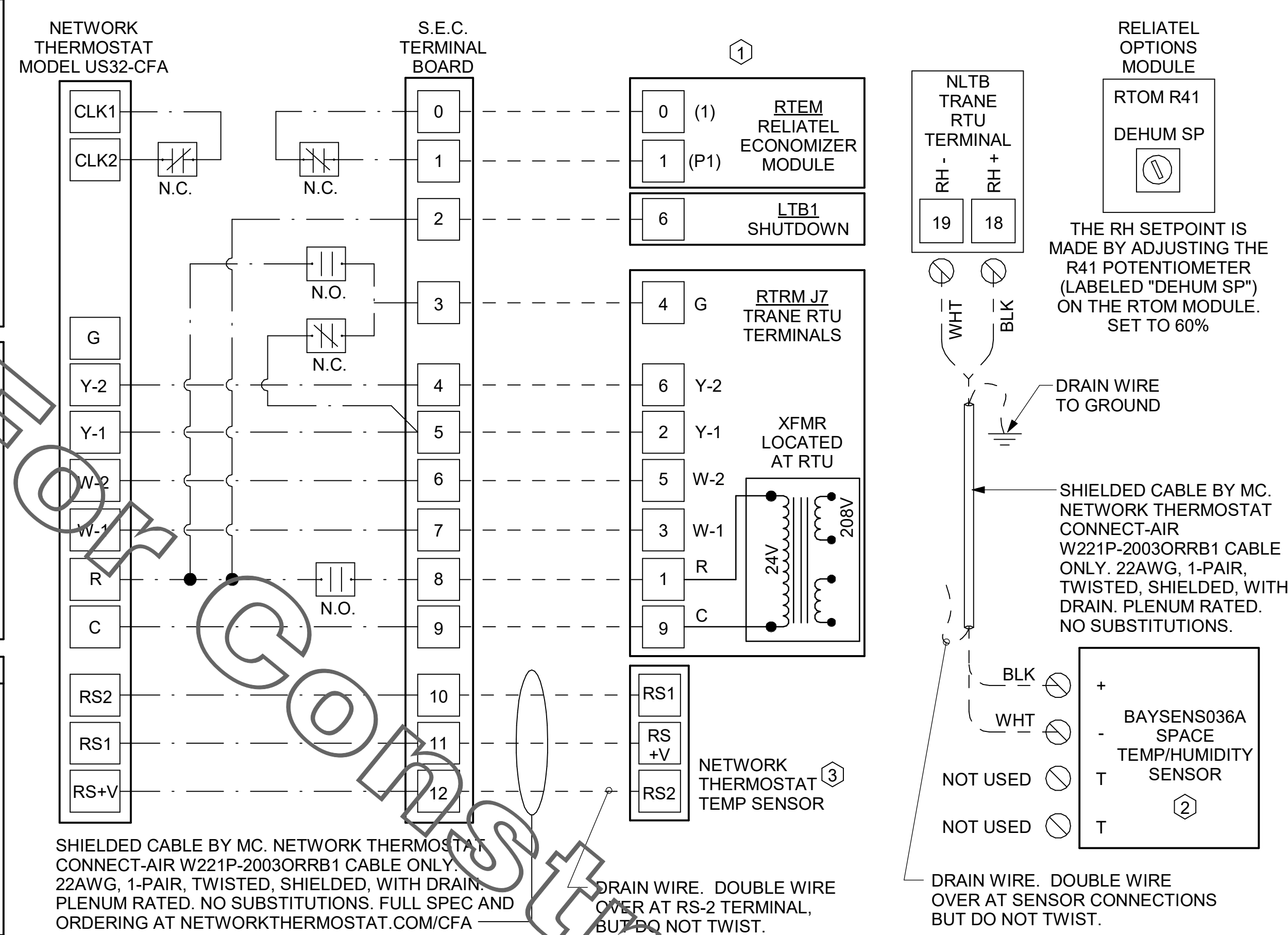
ISSUE FOR CONSTRUCTION

- NOTES:
- MECHANICAL CONTRACTOR SHALL MAKE PLASTIC LAMINATE OF THIS DETAIL AND INSTALL PERMANENTLY ON INSIDE DOOR OF ROOFTOP UNIT CONTROL COMPARTMENT.
 - SEE DETAILS THIS SHEET FOR SMOKE DETECTOR AND ANNUNCIATOR WIRING.
 - SET ALL THERMOSTATS FOR AUTO CHANGEOVER.
 - PROVIDE PLASTIC ENGRAVED LABEL AT ALL NEW SENSORS WITH 1/4" HIGH WHITE LETTERING ON BLACK BACKGROUND, I.E. "ACH#2 HUMIDITY SENSOR" OR "ACH#2 TEMP SENSOR". PLACE LABELS ON WALL ADJACENT TO DEVICE, DO NOT APPLY DIRECTLY TO DEVICE.

- KEYED NOTES:
- LOW VOLTAGE WIRING TO RTU TO BE ROUTED TO UNIT THRU FACTORY WIREWAY.
 - HOT GAS REHEAT UNITS ONLY: WIRING TO HUMIDITY SENSOR TO BE MADE WITH SHIELDED TWISTED PAIR AS SHOWN. TERMINATE SHIELD WIRES AT TB-1, LEAVE OPEN AT SENSOR.
 - NETWORK TSTAT REMOTE TEMP SENSOR PROVIDED BY SUNCOAST AND INSTALLED BY MC. SENSOR IS INTENDED TO BE SURFACE MOUNTED AND DOES NOT REQUIRE A SINGLE GANG BOX OR CONDUIT. FIELD CALIBRATE EACH SENSOR.

LEGEND

S.E.C.	SUNCOAST ENVIRONMENTAL CONTROLS (SUPPLIER OF TEMP/FAN CONTROL PANEL) LOCATED IN KITCHEN
1	KEY NOTE REFERENCE
MC	MECHANICAL CONTRACTOR
---	22 AWG MIN LOW VOLTAGE WIRING BY MC, U.N.O. USE WIRE TYPES AS NOTED.
---	LOW VOLTAGE WIRING BY S.E.C.
---	LINE VOLTAGE BY ELECTRICIAN OR S.E.C.

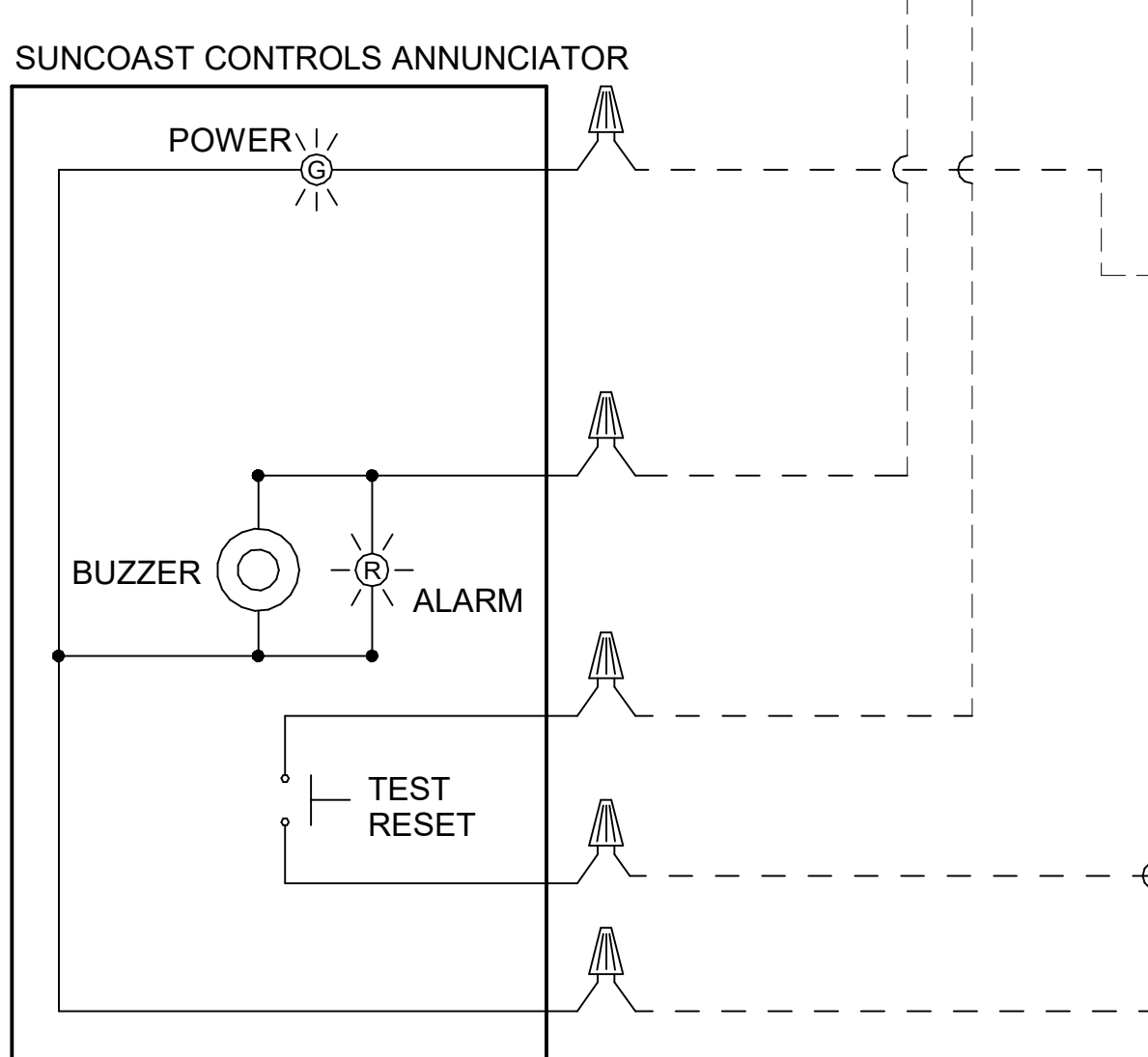


PROVIDE A PROFESSIONALLY LAMINATED COPY OF THESE DETAILS TO BE INSTALLED INSIDE THE ROOFTOP UNIT CONTROL CABINET. USE A SETON CHART FRAME STYLE #68624, TELEPHONE NUMBER 800-243-6624, FOR MOUNTING THE DETAIL. ATTACH THE FRAME TO THE INTERIOR OF THE UNIT IN PLAIN AND EASY VIEW OF THE CONTROLS SECTION. CONTACT ENGINEER OF RECORD FOR A REPRODUCIBLE COPY OF THE DETAIL.

1 ROOFTOP UNIT CONTROL WIRING - TRANE
NOT TO SCALE

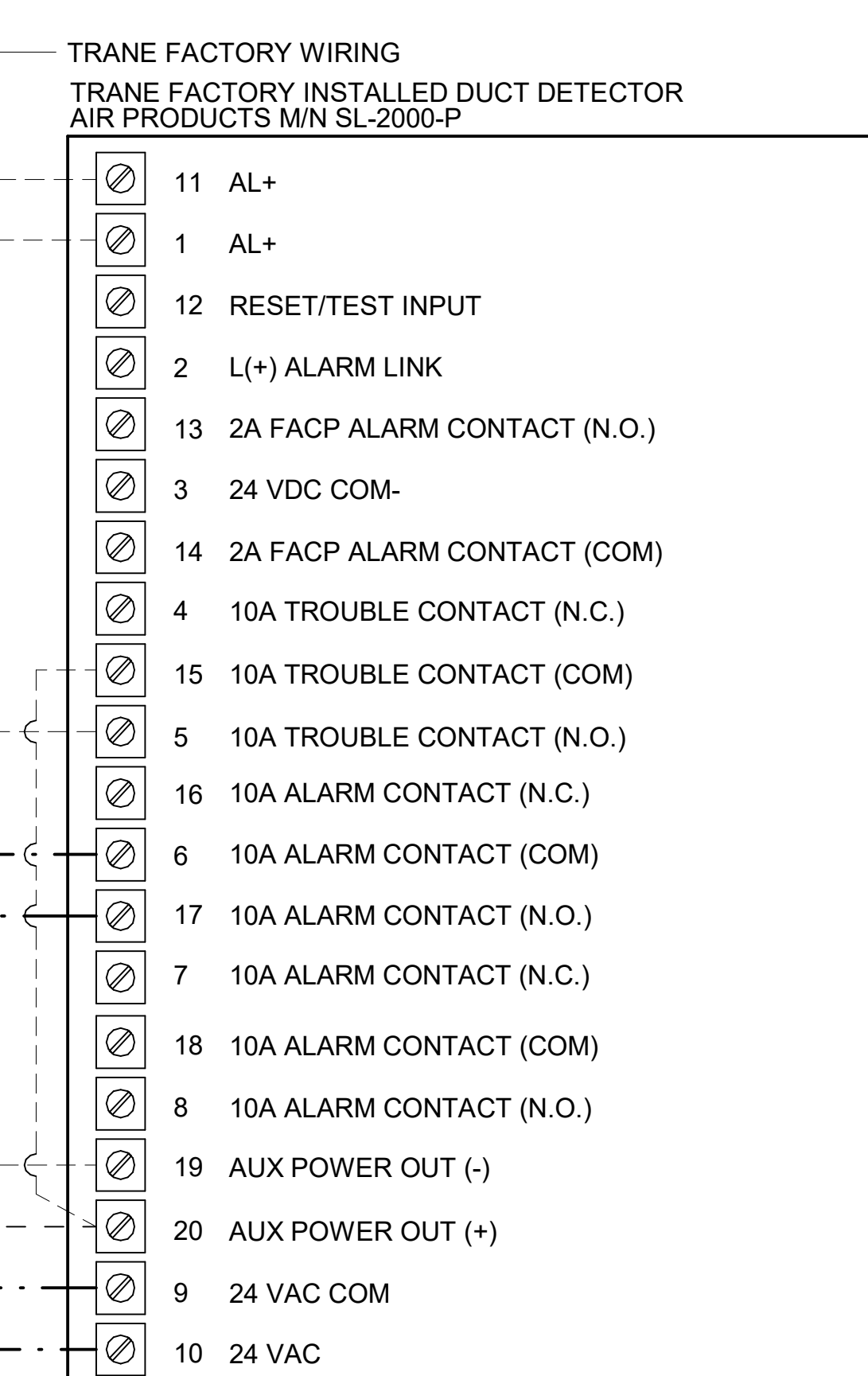
THERE WILL BE A SMOKE DETECTOR ANNUNCIATOR PROVIDED FOR THE RETURN AIR DUCT DETECTOR, WHERE A SUPPLY SIDE SMOKE DETECTOR IS SHOWN IN THE ROOFTOP UNIT SCHEDULE. AN ADDITIONAL SMOKE DETECTOR ANNUNCIATOR WILL ALSO BE PROVIDED. REFER TO RTU SCHEDULE FOR REQUIRED DETECTORS.

- LEGEND
- 18 AWG MIN WIRING BY MECH CONTRACTOR
 - FACTORY ANNUNCIATOR DETECTOR WIRING
 - FACTORY TRANE WIRING
- LABELING:
PROVIDE ENGRAVED LABEL WITH 1" HIGH WHITE LETTERS ON BLACK BACKGROUND IDENTIFYING UNIT SERVED.



2 SMOKE DETECTOR AND ANNUNCIATOR WIRING DIAGRAM - TRANE
NOT TO SCALE

FIELD INSTALLED WIRING:
WITHIN THE ROOFTOP UNIT, WIRING SHALL BE ROUTED BY WAY OF FACTORY WIREWAYS ONLY. WIRING ROUTED OVER THE BLOWER HOUSING OR BY WAY OF OTHER ROUTES DETRIMENTAL TO THE WIRING LIFE WILL NOT BE ACCEPTED.

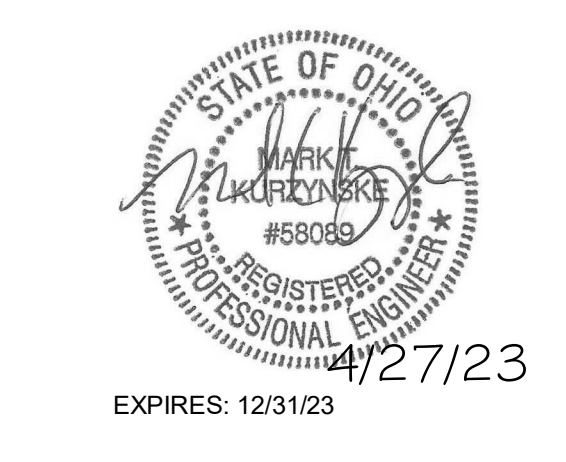


3 TRANE FRESH AIR TEMPERING DETAIL
NOT TO SCALE



Chick-fil-A
Chick-fil-A
5200 Buffington Road
Atlanta, Georgia
30349-2998

Kurzynske & Associates
2705 Lebanon Pike - Suite One
Nashville, Tennessee 37214
Telephone: (615) 255-5203



CHICK-FIL-A
EASTGATE FSU
874 EASTGATE NORTH DR
CINCINNATI, OH 45245

FSR#01956
BUILDING TYPE / SIZE: SOB-CR ALL
RELEASE: v2.20.08

REVISION SCHEDULE

NO.	DATE	DESCRIPTION

ISSUE FOR CONSTRUCTION

CONSULTANT PROJECT # 22124.CD.R
PRINTED ISSUE FOR CONSTRUCTION
DATE 09/08/2022
DRAWN BY DSF

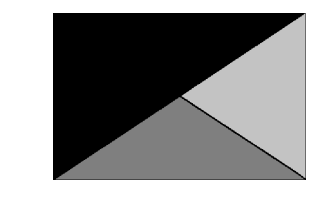
Information contained on this drawing and in all digital files produced for above named project may not be reproduced in any manner without express written or verbal consent from authorized project representatives.

SHEET HVAC CONTROLS

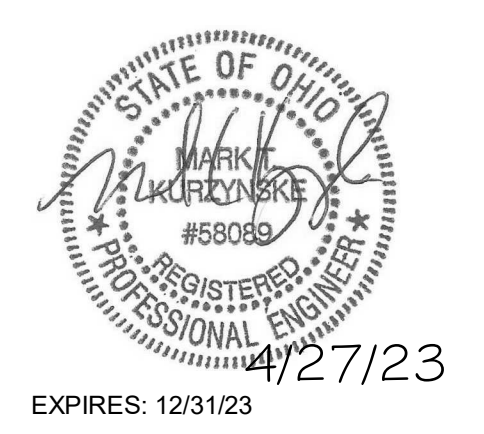
SHEET NUMBER
M-502



Chick-fil-A
5200 Buffington Road
Atlanta, Georgia
30349-2998



Kurzynske
& Associates
2705 Lebanon Pike - Suite One
Nashville, Tennessee 37214
Telephone: (615) 255-5203



CHICK-FIL-A
EASTGATE FSU
874 EASTGATE NORTH DR
CINCINNATI, OH 45245

FSR#01956
BUILDING TYPE / SIZE: S06C-R
RELEASE: v2.20.08

REVISION SCHEDULE

NO.	DATE	DESCRIPTION

CONSULTANT PROJECT # 22124.CD.R
PRINTED FOR CONSTRUCTION
DATE 09/08/2022
DRAWN BY DSF

Information contained on this drawing and in all digital files produced for above named project may not be reproduced in any manner without express written or verbal consent from authorized project representatives.

SHEET ENVELOPE & MECHANICAL COMCHECK

SHEET NUMBER

M-801

COMcheck Software Version 4.1.5.1
Envelope Compliance Certificate

Project Information

Energy Code: 2015 IECC
Project Title: Chick-fil-A #1956
Location: Cincinnati, Ohio
Climate Zone: 4a
Project Type: Addition

Construction Site: 874 Eastgate North Dr, Cincinnati, OH 45245
Owner/Agent: Chick-fil-A, 5200 Buffington Road, Atlanta, GA 30349
Designer/Contractor: Kurzynske & Associates, 2705 Lebanon Pike - Suite One, Nashville, TN 37214, 615-255-5203

Building Area

Building Area	Floor Area
1 Storage/Office (Dining, Cafeteria/Fast Food) - Nonresidential	581

Envelope Assemblies

Assembly	Gross Area or Perimeter	Cavity R-Value	Cont. R-Value	Proposed U-Factor	Budget U-Factor
Roof 1: Insulated Edge Above Deck, High Albedo Roof Required, (Bldg Use 1 - Storage/Office)	581	---	30.0	0.032	0.032
Floor 1: Slab-On-Grade, Vertical 2 ft, (Bldg Use 1 - Storage/Office)	112	---	10.0	0.540	0.540
NORTH					
Exterior Wall 2: Wood-Frame, 16" o.c., (Bldg Use 1 - Storage/Office)	638	20.0	0.0	0.064	0.064
Door 1: Insulated Metal, Storage, (Bldg Use 1 - Storage/Office)	29	---	---	0.330	0.610
EAST					
Exterior Wall 3: Wood-Frame, 16" o.c., (Bldg Use 1 - Storage/Office)	203	20.0	0.0	0.064	0.064
WEST					
Exterior Wall 1: Wood-Frame, 16" o.c., (Bldg Use 1 - Storage/Office)	203	20.0	0.0	0.064	0.064

(a) Budget U-factors are used for software baseline calculations only, and are not code requirements.
(b) Slab-On-Grade proposed and budget U-factors shown in table are U-factors.

Envelope PASSES: Design 5% better than code.

Envelope Compliance Statement

Compliance Statement: The proposed envelope design represented in this document is consistent with the building plans, specifications, and other calculations submitted with this permit application. The proposed envelope systems have been designed to meet the 2015 IECC requirements in COMcheck Version 4.1.5.1 and to comply with any applicable mandatory requirements listed in the Inspection Checklist.

Project Title: Chick-fil-A #1956
Data filename: Z:\Shared\02 Prototypes\Chick-fil-A\2022\Remodels\22124.CD.R - Cincinnati, OH (Eastgate) - Page 2 of 9
1956zComCheck\CFA #1956 2015 IECC ComCheck.cck

Mark Kurzynske, P.E.
Name - Title: _____ Signature: *Mark Kurzynske* Date: 1/5/23

Project Title: Chick-fil-A #1956
Data filename: Z:\Shared\02 Prototypes\Chick-fil-A\2022\Remodels\22124.CD.R - Cincinnati, OH (Eastgate) - Page 2 of 9
1956zComCheck\CFA #1956 2015 IECC ComCheck.cck

COMcheck Software Version 4.1.5.1
Mechanical Compliance Certificate

Project Information

Energy Code: 2015 IECC
Project Title: Chick-fil-A #1956
Location: Cincinnati, Ohio
Climate Zone: 4a
Project Type: Addition

Construction Site: 874 Eastgate North Dr, Cincinnati, OH 45245
Owner/Agent: Chick-fil-A, 5200 Buffington Road, Atlanta, GA 30349
Designer/Contractor: Kurzynske & Associates, 2705 Lebanon Pike - Suite One, Nashville, TN 37214, 615-255-5203

Mechanical Systems List

Quantity System Type & Description

1 AC#1 (25 ton) (Single Zone):
Heating: 1 each - Central Furnace, Gas, Capacity = 320 kBtu/h
Proposed Efficiency = 80.00% EI, Required Efficiency: 80.00 % EI
Cooling: 1 each - Single Package DX Unit, Capacity = 279 kBtu/h, Air-Cooled Condenser, Air Economizer
Proposed Efficiency = 10.60 EER, Required Efficiency: 9.80 EER + 11.4 IEER
Fan System: AC#1 Kitchen - Compliance (Motor nameplate HP method): Passes

Fans:
Supply Supply, Constant Volume, 8500 CFM, 7.5 motor nameplate hp, 0.0 fan efficiency grade
Exhaust Exhaust, Constant Volume, 2000 CFM, 0.9 motor nameplate hp, 0.0 fan efficiency grade

1 AC#2 (8.5 ton) (Single Zone):
Heating: 1 each - Central Furnace, Gas, Capacity = 180 kBtu/h
Proposed Efficiency = 80.00% EI, Required Efficiency: 80.00 % EI or 78% AFUE
Cooling: 1 each - Single Package DX Unit, Capacity = 96 kBtu/h, Air-Cooled Condenser, Air Economizer
Proposed Efficiency = 12.50 EER, Required Efficiency: 11.00 EER + 12.6 IEER
Fan System: AC#2 Dining - Compliance (Motor nameplate HP method): Passes

Fans:
Supply Supply, Constant Volume, 2830 CFM, 2.8 motor nameplate hp, 0.0 fan efficiency grade
Exhaust Exhaust, Constant Volume, 750 CFM, 0.9 motor nameplate hp, 0.0 fan efficiency grade

1 AC#3 (10 ton) (Single Zone):
Heating: 1 each - Central Furnace, Gas, Capacity = 200 kBtu/h
Proposed Efficiency = 80.00% EI, Required Efficiency: 80.00 % EI or 78% AFUE
Cooling: 1 each - Single Package DX Unit, Capacity = 114 kBtu/h, Air-Cooled Condenser, Air Economizer
Proposed Efficiency = 12.40 EER, Required Efficiency: 11.00 EER + 12.6 IEER
Fan System: AC#3 Dining - Compliance (Motor nameplate HP method): Passes

Fans:
Supply Supply, Constant Volume, 4000 CFM, 2.8 motor nameplate hp, 0.0 fan efficiency grade
Exhaust Exhaust, Constant Volume, 1000 CFM, 0.9 motor nameplate hp, 0.0 fan efficiency grade

1 AC#4 (7.5 ton) (Single Zone):
Heating: 1 each - Central Furnace, Gas, Capacity = 180 kBtu/h
Proposed Efficiency = 80.00% EI, Required Efficiency: 80.00 % EI or 78% AFUE
Cooling: 1 each - Single Package DX Unit, Capacity = 90 kBtu/h, Air-Cooled Condenser, Air Economizer
Proposed Efficiency = 12.80 EER, Required Efficiency: 11.00 EER + 12.6 IEER
Fan System: AC#4 Dining - Compliance (Motor nameplate HP method): Passes

Project Title: Chick-fil-A #1956
Data filename: Z:\Shared\02 Prototypes\Chick-fil-A\2022\Remodels\22124.CD.R - Cincinnati, OH (Eastgate) - Page 1 of 17
1956zComCheck\CFA #1956 2015 IECC ComCheck.cck

Quantity System Type & Description

Fans:
Supply Supply, Constant Volume, 2765 CFM, 2.8 motor nameplate hp, 0.0 fan efficiency grade
Exhaust Exhaust, Constant Volume, 600 CFM, 0.9 motor nameplate hp, 0.0 fan efficiency grade

1 AC#5 (ton) (Single Zone):
Heating: 1 each - Central Furnace, Gas, Capacity = 104 kBtu/h
Proposed Efficiency = 80.00% EI, Required Efficiency: 80.00 % EI or 78% AFUE
Cooling: 1 each - Single Package DX Unit, Capacity = 93 kBtu/h, Air-Cooled Condenser, Air Economizer
Proposed Efficiency = 11.20 SEER, Required Efficiency: 14.00 SEER
Fan System: AC#5 Port Dining - Compliance (Motor nameplate HP method): Passes

Fans:
Supply Supply, Constant Volume, 1900 CFM, 1.9 motor nameplate hp, 0.0 fan efficiency grade
Exhaust Exhaust, Constant Volume, 800 CFM, 0.9 motor nameplate hp, 0.0 fan efficiency grade

1 AHU#1CUR1 (Single Zone):
Split System Heat Pump
Heating Mode: Capacity = 40 kBtu/h
Proposed Efficiency = 10.00 HSPF, Required Efficiency = 8.00 HSPF
Cooling Mode: Capacity = 34 kBtu/h
Proposed Efficiency = 16.20 SEER, Required Efficiency: 14.00 SEER
Fan System: None

6 GH (Gas Infrared Heater) (Single Zone):
Heating: 1 each - Radiant Heater, Gas, Capacity = 50 kBtu/h
No minimum efficiency requirement applies
Fan System: None

1 EH (Electric Heater) (Single Zone):
Heating: 1 each - Radiant Heater, Electric, Capacity = 20 kBtu/h
No minimum efficiency requirement applies
Fan System: None

Mechanical Compliance Statement

Compliance Statement: The proposed mechanical design represented in this document is consistent with the building plans, specifications, and other calculations submitted with this permit application. The proposed mechanical systems have been designed to meet the 2015 IECC requirements in COMcheck Version 4.1.5.1 and to comply with any applicable mandatory requirements listed in the Inspection Checklist.

Mark Kurzynske, P.E.
Name - Title: _____ Signature: *Mark Kurzynske* Date: 1/5/23

Project Title: Chick-fil-A #1956
Data filename: Z:\Shared\02 Prototypes\Chick-fil-A\2022\Remodels\22124.CD.R - Cincinnati, OH (Eastgate) - Page 2 of 17
1956zComCheck\CFA #1956 2015 IECC ComCheck.cck

FOR CONSTRUCTION

FOR CONSTRUCTION

E
D
C
B
A

E
D
C
B
A

1. SECTION C15000 - MECHANICAL SPECIFICATIONS

PART I - GENERAL

1.01 SCOPE

- A. IT IS THE RESPONSIBILITY OF CONTRACTOR TO READ ALL SPECIFICATIONS AND CONSULT ALL DRAWINGS WHICH MAY AFFECT THE INSTALLATION AND COORDINATION OF HIS WORK WITH OTHER TRADES. CONTRACTOR SHALL COORDINATE AND MAKE MINOR ADJUSTMENTS IN LOCATION OF EQUIPMENT AND MATERIALS AS NECESSARY TO SECURE COORDINATION.
- B. COMPLETED INSTALLATION SHALL CONFORM TO ALL APPLICABLE FEDERAL, STATE AND LOCAL CODES AND ORDINANCES, INCLUDING BUT NOT LIMITED TO THE LATEST APPROVED EDITIONS OF NFPA-96, NFPA-90A, NFPA-54, SMACNA, ASHRAE 90.1 AND ASHRAE 62.
- C. SYSTEM LAYOUT IS SCHEMATIC AND EXACT LOCATIONS SHALL BE DETERMINED BY STRUCTURAL CONDITIONS, COORDINATION WITH OTHER TRADES, COORDINATION WITH FINISHES AND OTHER CONDITIONS. STRUCTURAL SUPPORTS SHALL NOT BE CUT OR ALTERED TO ASSURE FIT OF HVAC SYSTEM. TEN FOOT CLEARANCE SHALL BE MAINTAINED BETWEEN OUTSIDE AIR INTAKES AND EXHAUST FANS AND PLUMBING VENT TERMINALS.
- D. CONTRACTOR SHALL BE RESPONSIBLE FOR ALL DEFECTS, REPAIRS AND REPLACEMENTS IN MATERIALS AND WORKMANSHIP FOR A PERIOD OF ONE (1) YEAR AFTER FINAL PAYMENT IS APPROVED. CONTRACTOR SHALL HONOR FACTORY WARRANTIES ON ALL EQUIPMENT PROVIDED AS PART OF THIS SYSTEM.
- E. UPON COMPLETION OF PROJECT, ALL SYSTEM EQUIPMENT AND MATERIALS SHALL BE IN NEW, CLEAN CONDITION WITH ALL DAMAGE RESTORED TO CONDITION ACCEPTABLE TO THE OWNERS REPRESENTATIVE. ALL EQUIPMENT, COMPONENTS, DUCTWORK, AND AIR DEVICES SHALL BE INSPECTED AND THOROUGHLY CLEANED, CLEARED OF DEBRIS, AND READY FOR USE. AT COMPLETION OF JOB, ALL MISCELLANEOUS TOOLS, SCAFFOLDING, SURPLUS MATERIALS, RUBBISH AND DEBRIS SHALL BE REMOVED BY CONTRACTOR.
- F. CONTRACTOR SHALL PROVIDE TWO SETS OF 2" MERV 8 OR HIGHER THROW AWAY TYPE FILTERS. A CLEAN SET SHALL BE PROVIDED PRIOR TO TEST AND BALANCE AND AGAIN PRIOR TO OPENING.

PART II - PRODUCTS

2.01 HEATING AND COOLING EQUIPMENT (C15730)

- A. FURNISH AND INSTALL R-410A ROOFTOP SINGLE PACKAGE COMBINATION ELECTRIC COOLING AND NATURAL GAS FIRED HEATING UNITS BY TRANE AS SHOWN ON DRAWINGS. EQUIPMENT SHALL BE ARI CERTIFIED AND A.G.A. AND U.L. LISTED.
- B. ACCESSORIES SHALL INCLUDE LOW AND HIGH PRESSURE SAFETIES, CRANK CASE HEATER, OVERCURRENT AND OVERTEMPERATURE SAFETY, COMPRESSOR VIBRATION ISOLATORS, FILTER DRIERS, REFRIGERANT SERVICE VALVES, COIL HAIL GUARDS WHERE SCHEDULED, CONVENIENCE OUTLETS FACTORY INSTALLED ON SCHEDULED UNITS, UNIT MOUNTED NON-FUSED DISCONNECTS, LOW AMBIENT OPERATION DOWN TO 30 DEGREES F AND EVAPORATOR FREEZE STAT.
- C. COMPRESSORS SHALL BE FULLY HERMETIC SCROLL TYPE WITH INTERNAL VIBRATION ISOLATORS. COMPRESSORS SHALL BE PROVIDED WITH A MINIMUM FIVE (5) YEAR FULL WARRANTY.
- D. THE UNIT HEAT EXCHANGERS SHALL BE STEEL WITH ALUMINIZED STEEL COATING. HEATING CONTROLS SHALL CONSIST OF REDUNDANT GAS VALVES, INTERMITTENT PILOT WITH ELECTRONIC SPARK OR HOT PLATE IGNITION SYSTEM, COMBUSTION/EXHAUST FAN PROTECTED BY CENTRIFUGAL SWITCHES, HEAT LIMIT SWITCHES, TIME-DELAY RELAY, FLAME, AND PILOT SENSORS. ALL UNITS SHALL BE CAPABLE OF TWO STAGES OF HEAT. HEAT EXCHANGES SHALL HAVE TEN (10) YEAR WARRANTY. BURNERS SHALL BE ALUMINIZED IN-SHOT TYPE. THE DRAFT MOTOR SHALL BE MONITORED BY THE CONTROL SYSTEM.
- E. CHICK-FIL-A MAINTAINS A NATIONAL ACCOUNT FOR EQUIPMENT WITH TRANE. PRICING FOR THE EQUIPMENT HAS BEEN ESTABLISHED IN ADVANCE. CONTACT TRANE NATIONAL ACCOUNTS AT 630-400-4285 FOR PRICING, ORDERING AND AVAILABILITY.

2.02 DUCTWORK (C15735) (SEE DWG M-301 FOR ADDITIONAL GREASE DUCT SYSTEM REQ.)

- A. ACCEPTABLE MANUFACTURERS OF INSULATION ARE MANVILLE, OWENS CORNING OR KNAUF.
- B. ALL DUCTWORK SHALL BE SHEET METAL, UNLESS NOTED OTHERWISE (U.N.O.).
- C. DUCT DIMENSIONS SHOWN ARE INSIDE CLEAR DIMENSIONS, U.N.O.
- D. CONSTRUCTION OF DUCTWORK SHALL MEET SMACNA 1" W.C. PRESSURE CLASS STANDARD AND RECOMMENDATIONS. SMACNA SHALL BE FOLLOWED WITH RESPECT TO GAGE THICKNESS, JOINTS, REINFORCING, CONSTRUCTION, INSTALLATION AND SUPPORT FOR PRESSURE CLASS STATED. ALL TRANSVERSE JOINTS IN RECTANGULAR AND ROUND DUCT INCLUDING DUCT CONNECTION TO AIR DEVICE COLLAR SHALL BE SEALED PER SMACNA SEAL CLASS C WITH U.L. DUCT MASTIC SEALANT APPROVED FOR INTENDED USE. DUCT TAPE IS NOT AN ACCEPTABLE SUBSTITUTE FOR MASTIC UNLESS EQUAL TO HARDCAST FOIL-GRIP 1402 BUTYL RUBBER ADHESIVE TAPE.
- E. DUCT SHALL BE SUPPORTED AT BASE OF DUCT DROPS. CURB DUCT RAILS ARE NOT INTENDED TO AND SHALL NOT SUPPORT THE WEIGHT OF THE DUCT.
- F. ALL DUCT INSULATION SHALL MEET MINIMUM R-VALUE REQUIRED BY ASHRAE 90.1 LATEST EDITION. ALL DUCT WRAP SHALL BE MINIMUM 2" THICK, 3/4 PCF AND 6 R. VALUE INSTALLED WITH EITHER A VAPOR BARRIER WITH MAXIMUM PERMEANCE 0.05 OR A MINIMUM 2 MIL ALUMINUM REINFORCED FOIL/KRAFT FACING.
- G. ALL DUCT DROPS FROM THE ROOFTOP UNITS SHALL BE EXTERNALLY INSULATED.
- H. SUPPLY AND RETURN AIR DUCTWORK SERVING ALL AREAS SHALL BE EXTERNALLY INSULATED.
- I. ALL AIR CONVEYANCE COMPONENTS SUCH AS, BUT NOT LIMITED TO DUCT, DUCT PLENUMS, GRILLES/DIFFUSERS, BACK PANS, AND BOOTS SHALL BE INSULATED. INSULATION TYPE IS COVERED ELSEWHERE IN THIS SPECIFICATION.
- J. RESTROOM RECTANGULAR EXHAUST AIR DUCTWORK SHALL BE LINED WITH 1" THICK, 1-1/2 PCF INSULATION. RESTROOM ROUND EXHAUST DUCT SHALL BE EXTERNALLY INSULATED PER SECTION 2.02F.
- K. TRUNK DUCTS SHALL BE ISOLATED FROM UNIT VIBRATION WITH THE USE OF NFPA AND U.L. APPROVED FLEXIBLE CONNECTORS INSTALLED AT THE TOP OF BOTH SUPPLY AND RETURN DROPS.
- L. INSULATED FLEXIBLE DUCT MAY BE UTILIZED FOR RUNOUTS TO GRILLES AND DIFFUSERS ONLY IN THE HORIZONTAL POSITION AND IN MAXIMUM LENGTHS OF 4'-0", NO EXCEPTIONS. SEE TAKE OFF DETAIL ON DRAWING M-401.
- M. CONSTRUCTION OF FLEXIBLE DUCTWORK SHALL INCLUDE SPIRAL METAL HELIX BONDED TO A POLYESTER CORE, FIBERGLASS INSULATION WITH POLYETHYLENE OR MYLAR VAPOR BARRIER. ALL COMPONENTS SHALL HAVE APPROPRIATE U.L. APPROVAL AND SHALL BE EQUIVALENT TO THE MAPLEX MAKE.
- N. FLEXIBLE DUCT SHALL BE INSTALLED PER THE "ADD FLEXIBLE DUCT PERFORMANCE AND INSTALLATION STANDARDS, 4TH ED" USING FOIL TAPE AND DRAWBAND ON THE INNER CORE AND TAPE OR DRAWBAND ON THE OUTER JACKET.
- O. DUCT TAPE SHALL BE EQUAL TO FASSON 181-B FX, 2-1/2" WIDE.
- P. SINGLE THICKNESS TURNING VANES SHALL BE INSTALLED AT 90 DEGREE TURNS IN SUPPLY DUCTWORK WHERE ANY ONE DIMENSION IS GREATER THAN 12".
- Q. RADIUS ELBOWS MAY BE SUBSTITUTED FOR 90 DEGREE ELBOWS AT THE DISCRETION OF THE CONTRACTOR. CENTERLINE RADIUS EQUAL TO R/W PER FIGURE NO. 4-2 IN SMACNA HVAC DUCT CONSTRUCTION STANDARDS.
- R. EXTERNAL INSULATION ON BOTTOM OF DUCTS 24" OR WIDER SHALL BE SUPPORTED WITH STICK PINS ON 18" CENTERS. STICK PIN WASHERS SHALL BE COVERED WITH DUCT TAPE OR MASTIC.

2.03 CONTROLS (C15735)

- A. SYSTEMS SHALL BE COMPLETE WITH CONNECTIONS TO CFA-500 TEMPERATURE CONTROL PANEL AS MANUFACTURED BY SUNCOAST ENVIRONMENTAL CONTROLS (S.E.C.) (PH: 877-544-6679). THE PANEL IS PROVIDED AND MOUNTED BY THE ELECTRICAL CONTRACTOR. CONTROL WIRING TERMINATIONS ARE BY THE MECHANICAL CONTRACTOR.
- B. THE SMOKE DETECTORS SHALL BE FACTORY INSTALLED AND WIRED BY THE ROOFTOP UNIT MANUFACTURER.
- C. A FACTORY INSTALLED SMOKE DETECTOR IN THE RETURN AIR SECTION OF EACH AIR CONDITIONING UNIT SHALL STOP THE INDOOR FAN AND CLOSE THE OUTSIDE AIR DAMPER IN THE EVENT OF EXCESSIVE TEMPERATURE OR SMOKE. SMOKE DETECTOR SHALL BE LOCATED PRIOR TO ANY EXHAUST FROM THE BUILDING OR MIXING WITH FRESH AIR MAKE-UP. UPON DETECTION, THE SYSTEM SHALL NOT RESTART UNTIL THE DEVICE IS MANUALLY RESET. DEVICES SHALL BE LOCATED WHERE THEY CAN BE EASILY ACCESSED AND WHERE CLEAR OF FILTERS.
- D. CHICK-FIL-A HAS A NATIONAL ACCOUNT WITH SUNCOAST ENVIRONMENTAL CONTROLS FOR THE SMOKE DETECTOR TEST/RESET ANNUNCIATOR STATIONS. THE TEST/RESET STATIONS WILL BE PURCHASED BY THE ELECTRICAL CONTRACTOR AS A PART OF A NATIONAL ACCOUNT PACKAGE AND TURNED OVER TO THE MECHANICAL CONTRACTOR FOR INSTALLATION.
- E. THE REMOTE TEST/RESET ANNUNCIATORS SHALL BE PROVIDED BY THE ELECTRICAL CONTRACTOR AND INSTALLED BY THE MECHANICAL CONTRACTOR. INSTALLATION BY MECHANICAL SHALL INCLUDE MOUNTING OF THE ANNUNCIATORS AND ALL WIRING FROM EACH DEVICE TO THE RTU. ELECTRICAL WILL PROVIDE A JUNCTION BOX IN THE WALL WITH 1/2" CONDUIT STUBBED UP ABOVE THE CEILING FOR EACH REMOTE TEST STATION AS SHOWN ON THE ELECTRICAL PLANS. ANNUNCIATOR SHALL BE SUNCOAST CONTROLS REMOTE TEST/RESET STATION WITH POWER LED, TROUBLE LED, ALARM LED, 90DB HORN AND TEST/RESET BUTTON.
- F. THE RESTROOM FAN SHALL BE INTERLOCKED TO THE LIGHTS SERVING THE MEN AND WOMEN'S RESTROOMS. THE HOOD FANS SHALL BE CONTROLLED VIA THE SUNCOAST CFA-500 CONTROL PANEL. WIRING, RELAYS AND SWITCHES FOR CONTROL OF ALL FANS ARE BY ELECTRICAL CONTRACTOR.
- G. TRANE UNITS - THERMOSTATS ARE PROVIDED AND INTEGRATED INTO THE TEMPERATURE CONTROL PANEL BY SUNCOAST ENVIRONMENTAL CONTROLS. SUNCOAST WILL PROVIDE A NETWORK THERMOSTAT US32-CFA THERMOSTAT PRE-WIRED IN THE TEMPERATURE CONTROL PANEL. A REMOTE TEMPERATURE SENSOR FOR EACH THERMOSTAT IS ALSO PROVIDED. MECHANICAL CONTRACTOR SHALL INSTALL ALL WIRING BETWEEN THE THERMOSTAT, THE REMOTE SENSOR AND THE ROOFTOP UNIT.
- H. MECHANICAL CONTRACTOR SHALL INSTALL CONTROL WIRING IN 1/2" CONDUIT WHERE REQUIRED BY CODE. WHERE NOT REQUIRED TO BE IN CONDUIT, ALL WIRING SHALL BE RUN PARALLEL TO STRUCTURAL MEMBERS OR PERPENDICULAR WITH NO DIAGONAL ROUTING. ALL WIRING SHALL BE SECURED TO THE FRAMING TO PREVENT SAGGING IN RUNS. WIRING TO ROOFTOP UNITS SHALL BE ROUTED THROUGH THE FACTORY THRU-BASE FITTING IN THE UNIT BASE. NO SPLICING OF WIRING WILL BE ACCEPTED. ALL WIRING ABOVE THE ROOF SHALL BE INSTALLED IN EXTERIOR GRADE FLEXIBLE CONDUIT. ALL CONTROL WIRING AND CONTROL WIRING CONDUIT SHALL BE FURNISHED AND INSTALLED BY THE MECHANICAL CONTRACTOR. WIRING SHALL BE INSTALLED IN ACCORDANCE WITH LATEST EDITION OF NEC. ALL LOW VOLTAGE CONTROL WIRING SHALL BE NO LESS THAN 18 AWG MIN. CONTROL WIRING CONDUCTORS SHALL BE SIZED TO ACCOUNT FOR LOAD AND LENGTH OF RUN TO ALLOW SUFFICIENT VOLTAGE AVAILABLE AT CONTROLLED DEVICE TO OPERATE THE SYSTEM RELIABLY.

PART III - EXECUTION

3.01 SCOPE

- A. FURNISH AND INSTALL SYSTEM IN ACCORDANCE WITH REFERENCED STANDARDS, APPLICABLE CODES, MANUFACTURER'S RECOMMENDATIONS AND AS INDICATED ON DRAWINGS.
- B. CONTRACTOR SHALL INSTRUCT THE OWNER'S REPRESENTATIVE IN ALL MATTERS PERTAINING TO THE PROPER MAINTENANCE OF EQUIPMENT FURNISHED UNDER THIS CONTRACT THROUGH THE FOLLOWING ORATION AND EXPLANATION OF OPERATING & MAINTENANCE MANUALS.
- C. CONTRACTOR SHALL PROVIDE A "SAMPLE MAINTENANCE PROPOSAL" TO THE OWNER'S REPRESENTATIVE IN ALL MATTERS PERTAINING TO THE PROPER MAINTENANCE OF EQUIPMENT FURNISHED UNDER THIS CONTRACT.
- D. CONTRACTOR SHALL COMPLETE A/C EQUIPMENT STARTUP DOCUMENTATION PROVIDED BY OWNER AND/OR MANUFACTURER. THIS SHALL INCLUDE RE-TORQUE OF ALL FIELD AND FACTORY HIGH VOLATAGE CONNECTIONS.

3.02 LEED PROJECTS

- A. CONTRACTOR SHALL COMPLETE RECEIPT INSPECTION CHECKLISTS PROVIDED IN THE COMMISSIONING PLAN WITHIN 5 DAYS OF RECEIVING EQUIPMENT ON SITE.
- B. CONTRACTOR SHALL COMPLETE PRE-FUNCTIONAL CHECKLISTS PROVIDED IN THE COMMISSIONING PLAN. CHECKLISTS SHALL BE RETURNED AT LEAST 5 DAYS PRIOR TO SCHEDULING FUNCTIONAL PERFORMANCE TESTING.
- C. CONTRACTOR SHALL PROVIDE A TECHNICIAN TO ASSIST THE THIRD PARTY COMMISSIONING AUTHORITY WITH FUNCTIONAL TESTING. FUNCTIONAL TESTING SHALL OCCUR AFTER ALL CONTROLS HAVE BEEN INSTALLED AND VERIFIED AND AFTER TEST AND BALANCE IS COMPLETE. THE FUNCTIONAL PERFORMANCE TEST PROCEDURES CAN BE FOUND IN THE COMMISSIONING PLAN.
- D. IF THE TOTAL TIME REQUIRED TO CORRECT PROBLEMS DURING TESTING IS GREATER THAT FORTY-FIVE (45) MINUTES (UNLESS EXTENUATING CIRCUMSTANCES EXIST), THE TEST SHALL BE CONSIDERED FAILED AND MUST BE REPEATED IN ITS ENTIRETY.
- E. RE-TESTING: DURING THE COURSE OF THE RETEST, IF AT ANY POINT A MAJOR DEFICIENCY IS DISCOVERED, THE TEST WILL BE STOPPED, REPEAT TESTS UNTIL ACCEPTABLE RESULTS ARE ACHIEVED. IF MORE THAN TWO FUNCTIONAL PERFORMANCE TESTS (ONE INITIAL TEST AND ONE RETEST) FOR ANY TYPE OF EQUIPMENT DUE TO ISSUES THAT THE CONTRACTOR HAD DIRECT OR INDIRECT CONTROL OVER ARE REQUIRED, THE COSTS FOR THE CXA TO WITNESS RETESTING OF SIMILAR TYPES OF EQUIPMENT UNTIL SATISFACTORY RESULTS ARE OBTAINED SHALL BE THE RESPONSIBILITY OF THE CONTRACTOR.

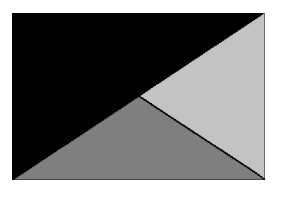
3.03 TEST & BALANCE

- A. OWNER SHALL TEST AND BALANCE MECHANICAL SYSTEM IN ACCORDANCE WITH NEBB, NBC OR AABC STANDARDS TO ASSURE CONFORMANCE WITH DESIGN. G.C. WILL MAKE MECHANICAL CONTRACTOR AVAILABLE DURING TEST AND BALANCE TO ASSIST TESTING AGENCY AND TO MAKE CORRECTIONS IMMEDIATELY NECESSARY. CONTRACTOR SHALL CORRECT ITEMS ON WRITTEN TEST AND BALANCE REPORT.
- B. ALL EQUIPMENT TO BE BALANCED MUST HAVE GONE THRU SUCCESSFUL START-UP PROCEDURE BY THE MECHANICAL CONTRACTOR (MC) PRIOR TO TAB VISIT.
- C. THE FLOOR OF THE RESTAURANT SHALL BE CLEARED OF DEBRIS, STAGED CONSTRUCTION MATERIALS, EQUIPMENT, ETC. WHICH MAY, IN THE OPINION OF THE TAB TECHNICIAN, OBSTRUCT ACCESS TO AIR DISTRIBUTION COMPONENTS IN AND ABOVE THE CEILING.
- D. EQUIPMENT ACCESS PANELS, DUCT AIR DEVICES SUCH AS BALANCING DAMPERS AND ACTUATORS SHALL BE ACCESSIBLE AND CLEAR OF PIPING, CONDUIT, FRAMING, SUPPORTS ETC...
- E. PROVIDE AN 8 FT PORTABLE A-FRAME STYLE LADDER DEDICATED FOR THE TAB TECHNICIAN'S USE DURING THE ENTIRE TAB EFFORT DURATION.
- F. THE MC SHALL BE AVAILABLE DURING THE ENTIRE DURATION OF THE TAB EFFORT AND HAVE ON-SITE THE RESOURCES AND TOOLS TO MAKE CORRECTIONS AS NEEDED UNDER THE DIRECTION OF THE TAB TECHNICIAN.

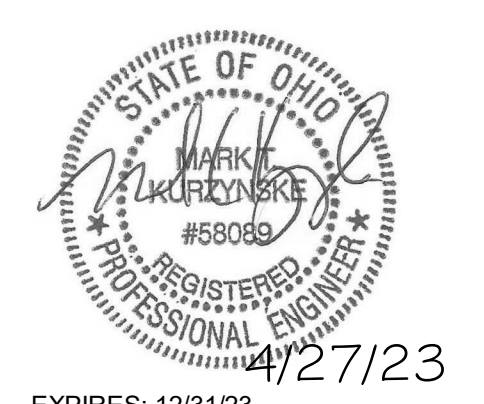
NATIONAL ACCOUNTS	
1.	TRANE EQUIPMENT - CONTACT TRANE NATIONAL ACCOUNTS AT 630-400-4285 FOR PRICING, ORDERING AND AVAILABILITY. TRANE EQUIPMENT NOT PURCHASED THRU TRANE NATIONAL ACCOUNTS WILL NOT BE ACCEPTED.
2.	LOREN COOK FAN AND CURB PACKAGE - THE MECHANICAL CONTRACTOR IS REQUIRED TO PURCHASE THE FAN/CURB PACKAGE DIRECTLY FROM TOM BARROW COMPANY. CONTACT MR. SCOTT GEORGE AT 404-351-1010 FOR PRICING AND AVAILABILITY. FANS AND CURBS NOT PURCHASED THRU TOM BARROW COMPANY WILL NOT BE ACCEPTED.
3.	PRICE AIR DEVICES - THE MECHANICAL CONTRACTOR IS REQUIRED TO PURCHASE THE AIR DEVICES DIRECTLY FROM TOM BARROW COMPANY. CONTACT MR. SCOTT GEORGE AT 404-351-1010 FOR PRICING AND AVAILABILITY. AIR DEVICES NOT PURCHASED THRU TOM BARROW COMPANY WILL NOT BE ACCEPTED.
4.	AIR DOORS - THE MECHANICAL CONTRACTOR IS REQUIRED TO PURCHASE THE AIR DOORS DIRECTLY FROM TOM BARROW COMPANY. CONTACT MR. SCOTT GEORGE AT 404-351-1010 FOR PRICING AND AVAILABILITY. AIR DOORS NOT PURCHASED THRU TOM BARROW COMPANY WILL NOT BE ACCEPTED.
5.	HALTON HOODS - CHICK-FIL-A WILL PURCHASE AND PROVIDE THE HOODS FOR INSTALLATION BY THE MECHANICAL CONTRACTOR. THE MECHANICAL CONTRACTOR SHALL BE RESPONSIBLE FOR RECEIVING THE HOODS. CONTACT HALTON CO. AT 270-237-5600 FOR MORE INFO.
6.	ROYAL METAL PRODUCTS START COLLARS - THE MECHANICAL CONTRACTOR IS REQUIRED TO PURCHASE THE START COLLARS DIRECTLY FROM TOM BARROW COMPANY. CONTACT MR. SCOTT GEORGE AT 404-351-1010 FOR PRICING AND AVAILABILITY. START COLLARS NOT PURCHASED THRU TOM BARROW COMPANY WILL NOT BE ACCEPTED.
7.	SCHWANK INFRARED HEATER PACKAGE - THE MECHANICAL CONTRACTOR IS REQUIRED TO PURCHASE THE HEATER PACKAGE DIRECTLY FROM TOM BARROW COMPANY. CONTACT MR. SCOTT GEORGE AT 404-351-1010 FOR PRICING AND AVAILABILITY. HEATERS NOT PURCHASED THRU TOM BARROW COMPANY WILL NOT BE ACCEPTED.
8.	CIRCULATING FAN PACKAGE - THE MECHANICAL CONTRACTOR IS REQUIRED TO PURCHASE THE FAN PACKAGE DIRECTLY FROM TOM BARROW COMPANY. CONTACT MR. SCOTT GEORGE AT 404-351-1010 FOR PRICING AND AVAILABILITY. FANS NOT PURCHASED THRU TOM BARROW COMPANY WILL NOT BE ACCEPTED.
9.	BROMIC ELECTRIC HEATER PACKAGE - THE MECHANICAL CONTRACTOR IS REQUIRED TO PURCHASE THE HEATER DIRECTLY FROM BROMIC COMPANY. CONTACT BLAKE RUSSIE AT 888-381-4860 FOR PRICING AND AVAILABILITY. HEATERS NOT PURCHASED THRU BROMIC COMPANY WILL NOT BE ACCEPTED.



Chick-fil-A
Chick-fil-A
5200 Buffington Road
Atlanta, Georgia
30349-2998



Kurzynske & Associates
 2705 Lebanon Pike - Suite One
 Nashville, Tennessee 37214
 Telephone: (615) 255-5203



EXPIRES: 12/31/23
 2/7/23

CHICK-FIL-A
EASTGATE FSU
 874 EASTGATE NORTH DR
 CINCINNATI, OH 45245

FSR#01956
 BUILDING TYPE / SIZE: S06C-R
 RELEASE: v2.20.08

REVISION SCHEDULE

NO.	DATE	DESCRIPTION

CONSULTANT PROJECT # 22124.CD.R
 PRINTED ISSUE FOR CONSTRUCTION
 DATE 09/08/2022
 DRAWN BY DSF

Information contained on this drawing and in all digital files produced for above named project may not be reproduced in any manner without express written or verbal consent from authorized project representatives.

SHEET MECHANICAL SPECIFICATIONS

SHEET NUMBER **M-901**

ISSUE FOR CONSTRUCTION

MODEL: KVL-2-1C

FACTORY MUST BE ADVISED OF ANY SPECIAL REQUIREMENTS OF THE HOODS BEING FABRICATED AT THE TIME OF QUOTE

STANDARD FEATURES

- S.S. FILTERS (KSA) 3
- 12 S.S. FILTERS (KSA) -
- CAPTURE-JET *
- STAND-OFF *
- L.E.D. LIGHTS 2

OPTIONS

- REMOTE SWITCH PANEL
- FIRE PROTECTION *
- ETL LISTED W/O EXHAUST DAMPER *
- CEILING CLOSURE 2
- STD. BACKSPASH
- INSULATED BACKSPASH *
- MBD DAMPER *

MATERIAL

EXPOSED SURFACES 18 GA. S.S. *

ALL 18 GA. S.S.

COMMENTS

CLOSURE HEIGHT = TBD (TWO SIDES)

CEILING HEIGHT = ADVISE CEILING CLOSURE RECESSED 11" FROM FRONT TO CREATE SHELF

36"x24" ACCESS DOOR LEFT SIDE FOR ACCESS TO CAPTURE-JET WITH FRONT CJ INTAKE & MBD

CONTINUOUS CAPTURE INTERNAL RIGHT END C/O OUT

3" REAR STAND-OFF TO HAVE 1" THICK INSULATION

EQUIPMENT COVERED (3) PRESSURE FRYERS

HOOD WEIGHT = 394 LBS

DATE DWG. NO. ITEM NO. EXHAUST AIR INFORMATION

10.25.22 U22-817-01 H-1L CFM TAB SP

PROJECT: CHICK-FIL-A #1956 EASTGATE FSU 709 .13" .23"

LOCATION: CINCINNATI, OH CAPTURE AIR INFORMATION CFM SP

SUBMITTED BY: HALTON CO. 47 .30"

K FACTOR EQUATION: CFM = K FACTOR * \sqrt{DP} K FACTOR = 1959

Halton

MODEL: KVL-2-1C

FACTORY MUST BE ADVISED OF ANY SPECIAL REQUIREMENTS OF THE HOODS BEING FABRICATED AT THE TIME OF QUOTE

STANDARD FEATURES

- S.S. FILTERS (KSA) 5
- 12 S.S. FILTERS (KSA) -
- CAPTURE-JET *
- STAND-OFF *
- L.E.D. LIGHTS 3

OPTIONS

- REMOTE SWITCH PANEL
- FIRE PROTECTION *
- ETL LISTED W/O EXHAUST DAMPER *
- CEILING CLOSURE 2
- STD. BACKSPASH
- INSULATED BACKSPASH *
- MBD DAMPER *

MATERIAL

EXPOSED SURFACES 18 GA. S.S. *

ALL 18 GA. S.S.

COMMENTS

CLOSURE HEIGHT = TBD (TWO SIDES)

CEILING HEIGHT = ADVISE CEILING CLOSURE RECESSED 11" FROM FRONT TO CREATE SHELF

FRONT CLOSURE PANEL WITH 40"x24" LIFT OUT DOOR RIGHT SIDE ACCESS TO FIRE SUPPRESSION

40"x24" LIFT OUT DOOR LEFT SIDE AT CAPTURE-JET WITH FRONT CJ INTAKE

CONTINUOUS CAPTURE INTERNAL LEFT END C/O OUT

3" REAR STAND-OFF TO HAVE 1" THICK INSULATION

NOTCHED RIGHT END PANEL

EQUIPMENT COVERED (2) FRYERS

ANSUL WEIGHT = 63 LBS HOOD WEIGHT = 669 LBS

DATE DWG. NO. ITEM NO. EXHAUST AIR INFORMATION

10.25.22 U22-817-01 H-1R CFM TAB SP

PROJECT: CHICK-FIL-A #1956 EASTGATE FSU 1204 .13" .22"

LOCATION: CINCINNATI, OH CAPTURE AIR INFORMATION CFM SP

SUBMITTED BY: HALTON CO. 80 .30"

K FACTOR EQUATION: CFM = K FACTOR * \sqrt{DP} K FACTOR = 3365

Halton

MODEL: KVL-C-1C

FACTORY MUST BE ADVISED OF ANY SPECIAL REQUIREMENTS OF THE HOODS BEING FABRICATED AT THE TIME OF QUOTE

STANDARD FEATURES

- S.S. FILTERS (KSA) 2
- CAPTURE-JET *
- STAND-OFF *
- L.E.D. LIGHTS 1

OPTIONS

- REMOTE SWITCH PANEL
- FIRE PROTECTION *
- ETL LISTED W/O EXHAUST DAMPER *
- CEILING CLOSURE 2
- STD. BACKSPASH
- INSULATED BACKSPASH *
- MBD DAMPER *

MATERIAL

EXPOSED SURFACES 18 GA. S.S. *

ALL 18 GA. S.S.

COMMENTS

CLOSURE HEIGHT = TBD (TWO SIDES)

CEILING HEIGHT = ADVISE CEILING CLOSURE RECESSED 10" FROM FRONT TO CREATE SHELF

FRONT CLOSURE PANEL WITH 40"x24" LIFT OUT DOOR RIGHT SIDE ACCESS TO FIRE SUPPRESSION

40"x24" LIFT OUT DOOR LEFT SIDE AT CAPTURE-JET WITH FRONT CJ INTAKE

CONTINUOUS CAPTURE INTERNAL LEFT END C/O OUT

3" REAR STAND-OFF TO HAVE 1" THICK INSULATION

NOTCHED RIGHT END PANEL

EQUIPMENT COVERED (2) FRYERS

HOOD WEIGHT = 245 LBS

DATE DWG. NO. ITEM NO. EXHAUST AIR INFORMATION

10.25.22 U22-817-01 H-2 CFM T.A.B. SP

PROJECT: CHICK-FIL-A #1956 EASTGATE FSU 701 .30" .39"

LOCATION: CINCINNATI, OH CAPTURE AIR INFORMATION CFM SP

SUBMITTED BY: HALTON CO. 30 .29"

K FACTOR EQUATION: CFM = K FACTOR * \sqrt{DP} K FACTOR = 1281

Halton

MODEL: KVL-C-1C

FACTORY MUST BE ADVISED OF ANY SPECIAL REQUIREMENTS OF THE HOODS BEING FABRICATED AT THE TIME OF QUOTE

STANDARD FEATURES

- S.S. FILTERS (KSA) 2
- CAPTURE-JET *
- STAND-OFF *
- L.E.D. LIGHTS 1

OPTIONS

- REMOTE SWITCH PANEL
- FIRE PROTECTION *
- ETL LISTED W/O EXHAUST DAMPER *
- CEILING CLOSURE 2
- STD. BACKSPASH
- INSULATED BACKSPASH *
- MBD DAMPER *

MATERIAL

EXPOSED SURFACES 18 GA. S.S. *

ALL 18 GA. S.S.

COMMENTS

CLOSURE HEIGHT = TBD (TWO SIDES)

CEILING HEIGHT = ADVISE CEILING CLOSURE RECESSED 10" FROM FRONT TO CREATE SHELF

FRONT CLOSURE PANEL WITH 40"x24" LIFT OUT DOOR RIGHT SIDE ACCESS TO FIRE SUPPRESSION

40"x24" LIFT OUT DOOR LEFT SIDE AT CAPTURE-JET WITH FRONT CJ INTAKE

CONTINUOUS CAPTURE INTERNAL LEFT END C/O OUT

3" REAR STAND-OFF TO HAVE 1" THICK INSULATION

NOTCHED RIGHT END PANEL

EQUIPMENT COVERED (2) FRYERS

HOOD WEIGHT = 245 LBS

DATE DWG. NO. ITEM NO. EXHAUST AIR INFORMATION

10.25.22 U22-817-01 H-3 CFM T.A.B. SP

PROJECT: CHICK-FIL-A #1956 EASTGATE FSU 701 .30" .39"

LOCATION: CINCINNATI, OH CAPTURE AIR INFORMATION CFM SP

SUBMITTED BY: HALTON CO. 30 .29"

K FACTOR EQUATION: CFM = K FACTOR * \sqrt{DP} K FACTOR = 1281

Halton

MODEL: KVL-C-1C

FACTORY MUST BE ADVISED OF ANY SPECIAL REQUIREMENTS OF THE HOODS BEING FABRICATED AT THE TIME OF QUOTE

STANDARD FEATURES

- S.S. FILTERS (KSA) 2
- CAPTURE-JET *
- STAND-OFF *
- L.E.D. LIGHTS 1

OPTIONS

- REMOTE SWITCH PANEL
- FIRE PROTECTION *
- ETL LISTED W/O EXHAUST DAMPER *
- CEILING CLOSURE 2
- STD. BACKSPASH
- INSULATED BACKSPASH *
- MBD DAMPER *

MATERIAL

EXPOSED SURFACES 18 GA. S.S. *

ALL 18 GA. S.S.

COMMENTS

CLOSURE HEIGHT = TBD (TWO SIDES)

CEILING HEIGHT = ADVISE CEILING CLOSURE RECESSED 10" FROM FRONT TO CREATE SHELF

FRONT CLOSURE PANEL WITH 40"x24" LIFT OUT DOOR RIGHT SIDE ACCESS TO FIRE SUPPRESSION

40"x24" LIFT OUT DOOR LEFT SIDE AT CAPTURE-JET WITH FRONT CJ INTAKE

CONTINUOUS CAPTURE INTERNAL LEFT END C/O OUT

3" REAR STAND-OFF TO HAVE 1" THICK INSULATION

NOTCHED RIGHT END PANEL

EQUIPMENT COVERED (2) FRYERS

HOOD WEIGHT = 245 LBS

DATE DWG. NO. ITEM NO. EXHAUST AIR INFORMATION

10.25.22 U22-817-01 H-3 CFM T.A.B. SP

PROJECT: CHICK-FIL-A #1956 EASTGATE FSU 701 .30" .39"

LOCATION: CINCINNATI, OH CAPTURE AIR INFORMATION CFM SP

SUBMITTED BY: HALTON CO. 30 .29"

K FACTOR EQUATION: CFM = K FACTOR * \sqrt{DP} K FACTOR = 1281

Halton

HANGER BRACKET DETAIL

H-1L H-1R H-2 H-3

MODEL: MBD EXHAUST VOLUME DAMPER

MANUAL ADJUSTMENT DEVICE

FIELD WELD JOINT

EXHAUST AIR FROM HOOD

MATERIAL: ALUMINIZED FRAME 16GA CONT. WELDED OUTER SHELL AND ADJUSTABLE BLADES

TAG	"L"	"W"	QUANTITY
H-1L	8"	8"	1
H-1R	10"	11"	1
H-2	8"	8"	1
H-3	8"	8"	1

"KVL-2-1C" TYPICAL INSTALLATION

NOTE: CAPTURE-JET FAN IS INSTALLED ON TOP OF HOOD

4105A

"KVL-C-1C" TYPICAL INSTALLATION

NOTE: CAPTURE-JET FAN IS INSTALLED ON TOP OF HOOD

4105A

60143

THIS DETAIL PERTAINS TO THE INSTALLATION OF THE DOUBLE RECEPTACLE PIN & SLEEVE ASSEMBLY AT HOOD H-2 & HOOD H-3

H2 DOUBLE PIN AND SLEEVE

H3 DOUBLE PIN AND SLEEVE

60143

TYPICAL WIRING CAPTURE-JET FAN

BY HALTON

BY ELECTRICIAN

SPlice STRIP FOR HANGERS

REWORK NOTE: EDGE/SIDE TRIM PIECES

Halton

KSA Grease Extractor

Extraction of contaminants from the exhaust air is provided by the KSA Multi-Cyclone grease extractors. Efficient grease extraction is achieved by forcing the exhaust air to spiral continuously in the same direction in the multiple chambers of the extractor, thus separating the grease particles from the air flow centrifugally. High extraction efficiency and low pressure loss over the KSA remain practically constant in use.

Halton

BACK SHELF HOOD (CANOPY HOOD IS SIMILAR)

INSTALLATION NOTES:

- 1) Panels "P" are to be set on top of hood. Vertical flange at bottom of closure and vertical flange on top of hood to match up.
- 2) Horizontal flange "H" and the two vertical flanges.
- 3) Attach panels "P" to wall using appropriate hardware "H" 1/2" or 3/4" as provided by Halton.
- 4) Slide front panel "A" into place.
- 5) Attach front panel "A" to panels "P" using hardware "E" 1/2" not provided by Halton.

FRONT PANEL MAY BE FLUSH WITH FRONT OR RECESSED TO FORM SHELF

FIG. #2

Halton

HALTON HOODS

- ETL LISTED PER LATEST 710 STANDARD
- BUILT PER NFPA 96
- NSF LISTED

Halton

CONFORMS TO UL STD. E-81770 CERTIFIED TO IAC STD 9546

HALTON COMPANY, 101 INDUSTRIAL DR., SCOTTSVILLE, KY 42164

MODEL NO. SERIAL NO. ITEM NO.

KVL-2-1C

GENERAL REQUIREMENTS

FILTER THIS EXHAUST HOOD FOR COMMERCIAL AND INSTITUTIONAL KITCHENS

THE HOOD MUST BE INSTALLED TO THE UL LISTED SPECIFICATIONS.

THE HOOD MUST BE CERTIFIED BY ETL FOR A HIGH-CAPACITY TO COMPLY WITH THE REQUIREMENTS OF THE UL LISTED SPECIFICATIONS.

THE HOOD MUST BE CERTIFIED BY ETL FOR A HIGH-CAPACITY TO COMPLY WITH THE REQUIREMENTS OF THE UL LISTED SPECIFICATIONS.

REPLACE FILTERS ONLY WITH UL LISTED FILTERS OF THE SAME MODEL AND MANUFACTURER.

SUITABLE FOR USE TO REMOVE OILY COOKING APPLIANCE.

OUTLET LEVEL	MINIMUM CLEARANCE	MINIMUM EXHAUST CAPACITY (CFM)
MEDIUM	6" (0)	20
MEDIUM	6" (0)	25
MEDIUM	6" (0)	30
MEDIUM	6" (0)	35
MEDIUM	6" (0)	40
MEDIUM	6" (0)	45
MEDIUM	6" (0)	50
MEDIUM	6" (0)	55
MEDIUM	6" (0)	60
MEDIUM	6" (0)	65
MEDIUM	6" (0)	70
MEDIUM	6" (0)	75
MEDIUM	6" (0)	80
MEDIUM	6" (0)	85
MEDIUM	6" (0)	90
MEDIUM	6" (0)	95
MEDIUM	6" (0)	100
MEDIUM	6" (0)	105
MEDIUM	6" (0)	110
MEDIUM	6" (0)	115
MEDIUM	6" (0)	120
MEDIUM	6" (0)	125
MEDIUM	6" (0)	130
MEDIUM	6" (0)	135
MEDIUM	6" (0)	140
MEDIUM	6" (0)	145
MEDIUM	6" (0)	150
MEDIUM	6" (0)	155
MEDIUM	6" (0)	160
MEDIUM	6" (0)	165
MEDIUM	6" (0)	170
MEDIUM	6" (0)	175
MEDIUM	6" (0)	180
MEDIUM	6" (0)	185
MEDIUM	6" (0)	190
MEDIUM	6" (0)	195
MEDIUM	6" (0)	200
MEDIUM	6" (0)	205
MEDIUM	6" (0)	210
MEDIUM	6" (0)	215
MEDIUM	6" (0)	220
MEDIUM	6" (0)	225
MEDIUM	6" (0)	230
MEDIUM	6" (0)	235
MEDIUM	6" (0)	240
MEDIUM	6" (0)	245
MEDIUM	6" (0)	250
MEDIUM	6" (0)	255
MEDIUM	6" (0)	260
MEDIUM	6" (0)	265
MEDIUM	6" (0)	270
MEDIUM	6" (0)	275
MEDIUM	6" (0)	280
MEDIUM	6" (0)	285
MEDIUM	6" (0)	290
MEDIUM	6" (0)	295
MEDIUM	6" (0)	300
MEDIUM	6" (0)	305
MEDIUM	6" (0)	310
MEDIUM	6" (0)	315
MEDIUM	6" (0)	320
MEDIUM	6" (0)	325
MEDIUM	6" (0)	330
MEDIUM	6" (0)	335
MEDIUM	6" (0)	340
MEDIUM	6" (0)	345
MEDIUM	6" (0)	350
MEDIUM	6" (0)	355
MEDIUM	6" (0)	360
MEDIUM	6" (0)	365
MEDIUM	6" (0)	370
MEDIUM	6" (0)	375
MEDIUM	6" (0)	380
MEDIUM	6" (0)	385
MEDIUM	6" (0)	390
MEDIUM	6" (0)	395
MEDIUM	6" (0)	400
MEDIUM	6" (0)	405
MEDIUM	6" (0)	410
MEDIUM	6" (0)	415
MEDIUM	6" (0)	420
MEDIUM	6" (0)	425
MEDIUM	6" (0)	430
MEDIUM	6" (0)	435
MEDIUM	6" (0)	440
MEDIUM	6" (0)	445
MEDIUM	6" (0)	450
MEDIUM	6" (0)	455
MEDIUM	6" (0)	460
MEDIUM	6" (0)	465
MEDIUM	6" (0)	470
MEDIUM	6" (0)	475
MEDIUM	6" (0)	480
MEDIUM	6" (0)	485
MEDIUM	6" (0)	490
MEDIUM	6" (0)	495
MEDIUM	6" (0)	500
MEDIUM	6" (0)	505
MEDIUM	6" (0)	510
MEDIUM	6" (0)	515
MEDIUM	6" (0)	520
MEDIUM	6" (0)	525
MEDIUM	6" (0)	530
MEDIUM	6" (0)	535
MEDIUM	6" (0)	540
MEDIUM	6" (0)	545
MEDIUM	6" (0)	550
MEDIUM	6" (0)	555
MEDIUM	6" (0)	560
MEDIUM	6" (0)	565
MEDIUM	6" (0)	570
MEDIUM	6" (0)	575
MEDIUM	6" (0)	580
MEDIUM	6" (0)	585
MEDIUM	6" (0)	590
MEDIUM	6" (0)	595
MEDIUM	6" (0)	600
MEDIUM	6" (0)	605
MEDIUM	6" (0)	610
MEDIUM	6" (0)	615
MEDIUM	6" (0)	620
MEDIUM	6" (0)	625
MEDIUM	6" (0)	630
MEDIUM	6" (0)	635
MEDIUM	6" (0)	640
MEDIUM	6" (0)	645
MEDIUM	6" (0)	650
MEDIUM	6" (0)	655
MEDIUM	6" (0)	660
MEDIUM	6" (0)	665
MEDIUM	6" (0)	670
MEDIUM	6" (0)	675
MEDIUM	6" (0)	680
MEDIUM	6" (0)	685
MEDIUM	6" (0)	690
MEDIUM	6" (0)	695
MEDIUM	6" (0)	700
MEDIUM	6" (0)	705
MEDIUM	6" (0)	710
MEDIUM	6" (0)	715
MEDIUM	6" (0)	720
MEDIUM	6" (0)	725
MEDIUM	6" (0)	730
MEDIUM	6" (0)	735
MEDIUM	6" (0)	740
MEDIUM	6" (0)	745
MEDIUM	6" (0)	750
MEDIUM	6" (0)	755
MEDIUM	6" (0)	760
MEDIUM	6" (0)	765
MEDIUM	6" (0)	770
MEDIUM	6" (0)	775
MEDIUM	6" (0)	780
MEDIUM	6" (0)	785
MEDIUM	6" (0)	790
MEDIUM	6" (0)	795
MEDIUM	6" (0)	800
MEDIUM	6" (0)	805
MEDIUM	6" (0)	810
MEDIUM	6" (0)	815
MEDIUM	6" (0)	820
MEDIUM	6" (0)	825
MEDIUM	6" (0)	830
MEDIUM	6" (0)	835
MEDIUM	6" (0)	840
MEDIUM	6" (0)	845
MEDIUM	6" (0)	850
MEDIUM	6" (0)	855
MEDIUM	6" (0)	860
MEDIUM	6" (0)	865
MEDIUM	6" (0)	870
MEDIUM	6" (0)	875
MEDIUM	6" (0)	880
MEDIUM	6" (0)	885
MEDIUM	6" (0)	890
MEDIUM	6" (0)	895
MEDIUM	6" (0)	900
MEDIUM	6" (0)	905
MEDIUM	6" (0)	910
MEDIUM	6" (0)	915
MEDIUM	6" (0)	920
MEDIUM	6" (0)	925
MEDIUM	6" (0)	930
MEDIUM	6" (0)	935
MEDIUM	6" (0)	940
MEDIUM	6" (0)	945
MEDIUM	6" (0)	950
MEDIUM	6" (0)	955
MEDIUM	6" (0)	960
MEDIUM	6" (0)	965
MEDIUM	6" (0)	970
MEDIUM	6" (0)	975
MEDIUM	6" (0)	980
MEDIUM	6" (0)	985
MEDIUM	6" (0)	990
MEDIUM	6" (0)	995
MEDIUM	6" (0)	1000

Halton

CONFORMS TO UL STD. E-81770 CERTIFIED TO IAC STD 9546

HALTON COMPANY, 101 INDUSTRIAL DR., SCOTTSVILLE, KY 42164

MODEL NO. SERIAL NO. ITEM NO.

KVL-C-1C

GENERAL REQUIREMENTS

FILTER THIS EXHAUST HOOD FOR COMMERCIAL AND INSTITUTIONAL KITCHENS

THE HOOD MUST BE INSTALLED TO THE UL LISTED SPECIFICATIONS.

THE HOOD MUST BE CERTIFIED BY ETL FOR A HIGH-CAPACITY TO COMPLY WITH THE REQUIREMENTS OF THE UL LISTED SPECIFICATIONS.

THE HOOD MUST BE CERTIFIED BY ETL FOR A HIGH-CAPACITY TO COMPLY WITH THE REQUIREMENTS OF THE UL LISTED SPECIFICATIONS.

REPLACE FILTERS ONLY WITH UL LISTED FILTERS OF THE SAME MODEL AND MANUFACTURER.

SUITABLE FOR USE TO REMOVE OILY COOKING APPLIANCE.

OUTLET LEVEL	MINIMUM CLEARANCE	MINIMUM EXHAUST CAPACITY (CFM)
MEDIUM	6" (0)	20
MEDIUM	6" (0)	25
MEDIUM	6" (0)	30
MEDIUM	6" (0)	35
MEDIUM	6" (0)	40
MEDIUM	6" (0)	45
MEDIUM	6" (0)	50
MEDIUM	6" (0)	55
MEDIUM	6" (0)	60
MEDIUM	6" (0)	65
MEDIUM	6" (0)	70

